

Shaping the periphery: Emergent architectures in Latin America

Aaron Brakke

University of Illinois Urbana Champaign

ABSTRACT: In an age that has become interested in urban issues at the planetary scale, it is advantageous for architectural design research to bridge the micro, meso and macro scales of the built environment. This article addresses the macro by comparing metrics of global urbanization, and then outlines the disparities between 'the urban condition(s)' found in North and South America. A more nuanced description of the uneven conditions of geographical development found in formal and informal constructions in Latin America sheds light on the context of this study, which sets the stage for a presentation of research that investigates several socially disjointed environments that represent the spatiotemporal conditions present in much of the contemporary Latin American urban landscape. This work has involved the participation of undergraduate students, graduate architecture students and faculty at Universidad Piloto de Colombia. The design research addresses the conditions of the emergent conditions of Latin American cities through participatory action research. Aspects of this research have been introduced into a design research studio setting where students have mapped the urban conditions and levels of forced displacement. Over the past 4 years, a network of private and public institutions and a NGO have worked with a vulnerable community located at the southern periphery of Bogota, Colombia to articulate alternative visions for future development than what has been scripted by the local planning department. The physical transformation of several strategic points of their neighborhood has begun through processes of 'autoconstruccion'. This paper outlines these processes and the observed impact that the transformation of the built environment has fostered in the community.

KEYWORDS: Participatory Action Research, Emergent Architecture, Insurgent Architects, Co-creation, Post-Conflict Architecture

INTRODUCTION

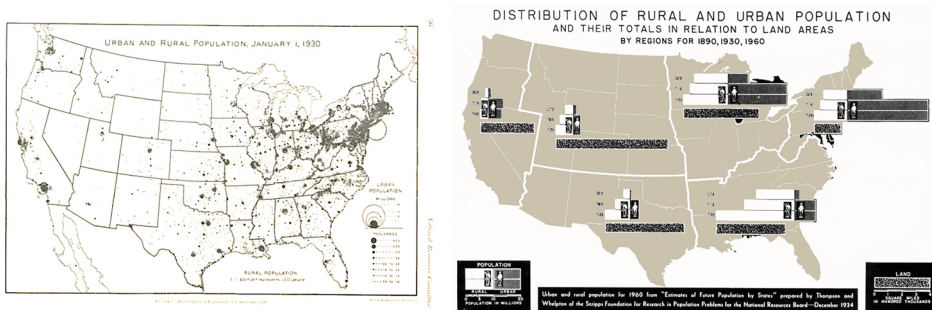
In an age that has become interested in urban issues at the planetary scale, it is advantageous for architectural design research to bridge the micro, meso and macro scales of the built environment. This article addresses the macro by comparing statistics, then by outlining the disparities between 'the urban condition(s)' found in North and South America. A more nuanced description of the uneven conditions of geographical development found in formal and informal constructions in Latin America sheds light on the context of this study, which will set the stage for a presentation of research that investigates the socially disjointed environments common in the spatiotemporal conditions of the contemporary Latin American city. This work has involved the participation of undergraduate students, graduate architecture students and faculty at X University. The design research addresses the conditions of the emergent conditions of Latin American cities through participatory action research. Aspects of this research have been introduced into a design research studio setting where students have mapped the urban conditions and levels of forced displacement. Design models and prototypes have served as important artifacts to develop consensus among several stakeholders. Over the past 4 years, a network of private and public institutions and a NGO have worked with a vulnerable community located at the southern periphery of Bogota, Colombia to articulate alternative visions for future development than what has been scripted by the local planning department. The physical transformation of several strategic points has begun through processes of 'autoconstruccion'.

1.0 PROJECTING URBANIZATION

"Space and time, the material foundations of human experience, have been transformed, as the space of flows dominates the space of places." (Castells, p. 1)

The rate of urbanization across the globe reached an important milestone on May 23, 2007 when urban dwellers surpassed rural inhabitants. The United Nations Department of Economic and Social Affairs estimates that urbanites reached 55% of world population in the decade that followed and will be 68% of the global population by 2050. The sheer numbers are daunting when milestones of the past century are situated next to current numbers. For example, in 1950, 750 million people lived in cities and now there are over 4.2 billion urban inhabitants. In many regions of the world it has become nearly impossible to create accurate projections necessary for the infrastructural planning to accommodate such rapid growth.

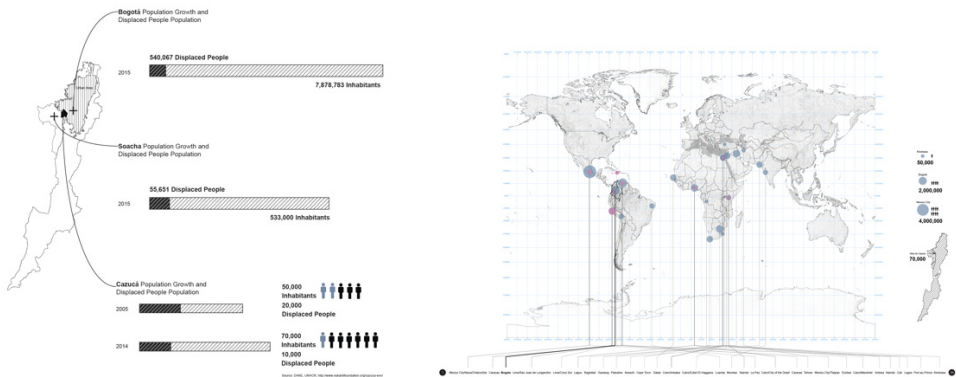
The numbers are consistent across the Americas and demonstrate similar levels of urbanity at just above 80%. However, looking beyond the numbers it is clear that the similarities stop there. The qualities of urban life are quite different in the global north when compared with the global south. In 1934, Thompson and Whelpton of the Scripps Foundation for Research in Populations Problems presented their findings to the Natural Resources Board. This study indicated the projected linear growth that would maintain a level of constancy for US citizens due to the careful appropriation of resources. Though simplified and not predictive of the impact that other major world events had, the growth of the United States has followed the predicted pattern. The patterns of urban growth and the conditions of the built environment in Latin America are starkly different.



Figures 1 and Figure 2: Maps from a 1934 report by Thompson and Whelpton of the Scripps Foundation for Research Source: (Original by Thompson and Whelpton and modified by Author 2018)

The availability of resources and technology has become comparable, yet differences in the accessibility and level of development of the infrastructure demonstrate the disparity. Manuel Castell’s conceptualization of information networks and their impact on urbanism established a useful framework to understand the impact of the “Spaces of Flows” on the urban conditions late in the twentieth century. Several decades into the 21 century, however, it has become necessary to reframe this argument. Castell’s account of ubiquitous computing and digital platforms for the transmission of information raised questions about how physical infrastructure would be transformed when information moves without the need for the physical manifestation of this exchange. However, the volatility of climatic conditions, violence and political turmoil have actually caused the forced displacement of over 68 million people.

The design research included herein addresses the question of architectural agency in contexts where the “flow” of people has not ceased. This paper introduces a shift in inquiry that addresses the instability of urban centers and seeks to understand the implications of the accelerated growth that has occurred due to the reception of people who have been the victims of forced displacement. The invitation of this conference asks for narratives that illustrate the role of academics and researchers to apply design research and how this has affected praxis. The research of this paper will outline how the author is mapping and confronting the precarious conditions associated with forced migration in Latin America.



Figures 3 and Figure 4: Data visualization of displaced citizens inhabiting Cazuca and Map of Slums across the world.

2.0 IMPACT OF INTERNAL DISPLACEMENT ON LATIN AMERICAN URBANIZATION

Architectural histories have presented Latin America development through descriptions of the uneven socio-political circumstances found in many territories. This is categorized as formal and informal constructions and the tensions between these dimensions. In Colombian cities, such as Bogotá and Medellín, the informally settled periphery has become a point where citizens (many who have been displaced due to the armed conflict) have inhabited spaces where sovereign power and bio-power coincide. Moreover, the role of the designer and the agency of the object of the constitutive entanglement of the material and the social are charged conditions, as the built environment becomes a tacit artifact embedded with these tensions. (Knorr-Cetina 1997, Latour 2005, Orlikowski and Scott 2008).

Latin America has a violent history that has been punctuated with war and governmental turmoil. In the case of Colombia, the nation is entering a new phase after a fifty-year civil war against guerilla rebels. The Revolutionary Armed Forces of Colombia (FARC) and the Colombian National Government reached a peace agreement in 2016, which established a clear route for the demobilization of this left-wing guerilla group. The bilateral cease-fire has permitted a certain level of settling to occur, yet a great number of afflicted citizens have sought refuge in urban centers and have populated the informal developments found at the periphery of cities, such as Cali, Medellín and Bogotá. Colombia is the country of the highest number of internally displaced people (IDP) in the world. According to the Internal Displacement Monitoring Centre more than 6.5 million Colombian citizens have been displaced. There was an estimated deficit of one million housing units in the urban environments in 2011. The Colombian government allotted 583 million dollars in 2013 for the construction of low-income housing to help alleviate the stress of this tremendous influx of urban residents. These funds have been injected into new housing projects, which are beneficial to some extent. However, the existing favelas have also absorbed the problematic without the proper tools or resources to navigate this situation in a satisfactory way. Most of our work has been under the pretext of “insurgent architecture” and with the methodology established by Orlando Fals Borda’s “Participatory Action Research.” We have built co-creation projects that have provided us with valuable insight. Our current focus, however, takes a step back to understand how the contemporary issue of exacerbated levels of human migration is affecting urban centers.

3.0 RESEARCH QUESTIONS

What agency does design have when enlisted for the service of these people? Can the co-creation of the built environment strengthen vulnerable communities? What tactics are worth replicating? The content herein focuses on architectural responses that I have been involved with as a way to study and engage Colombian communities that have been affected by violence and displacement both directly and indirectly.

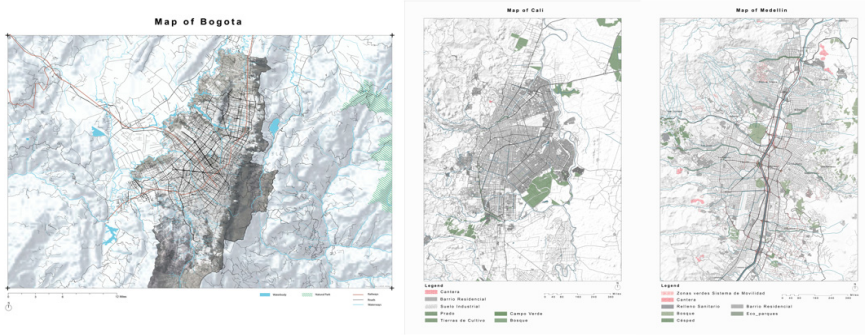


Figure 5: Maps of Bogotá, Cali and Medellín. Source: (Author 2018)

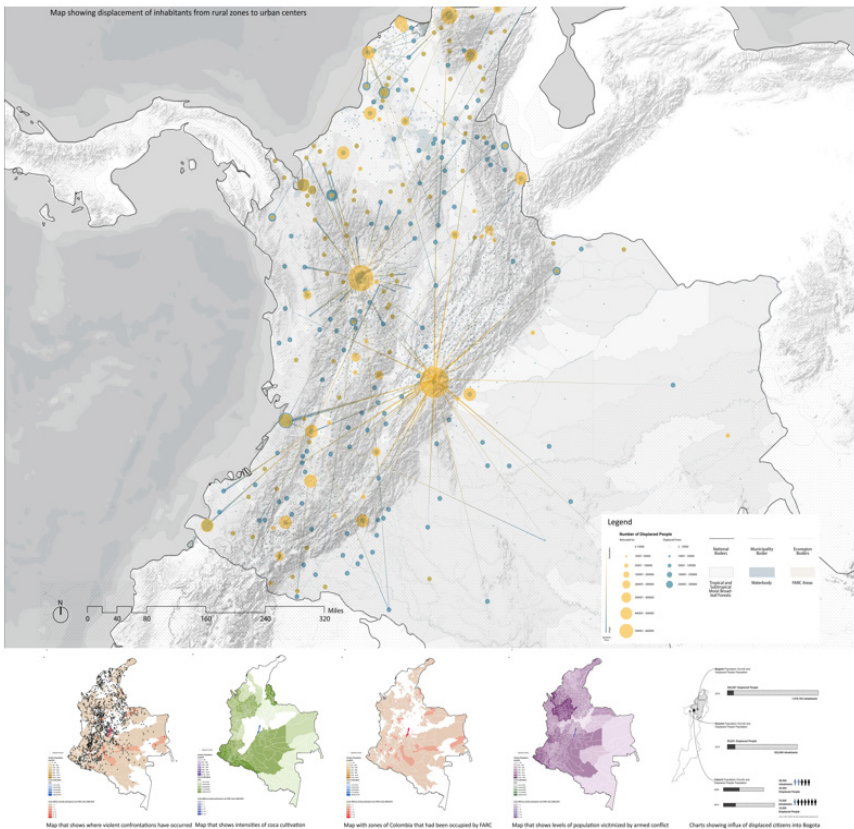


Figure 6: Data visualization maps that trace expulsion and reception of forcibly displaced citizens. Source: (Author 2018)

4.0 FORMS OF PRACTICE - PARTICIPATORY ACTION RESEARCH

"The freedom to make and remake our cities and ourselves is, I want to argue, one of the most precious yet most neglected of our human rights." - David Harvey, *The Right to the City*

There is a fundamental role of practice in this research. We have been working with a community in the neighborhood Altos de Cazuca of Comuna 4 of Soacha. This community is involved in this research because they have acknowledged sub-levels of development in their local infrastructure which they seek to address proactively. Their involvement with this investigation is conditional: they have agreed on the premise that the academic expertise

includes, but is not limited to; members of various indigenous tribes, designers, farmers, urbanites and collectives, architects, psychologists, medicine men, chefs, etc. This gathering has created a platform for exchange between a diverse group of participants who share the common goal of keeping ancestral knowledge alive and promoting healthy ways of living. In this case, the development of the event/platform is a tactic that is part of a larger strategy that involves heightening levels of consciousness through the sharing of knowledge. While this has traditionally served as a vehicle to perpetuate one's own culture, our collaborative work together resituates the idea of 'norm' and asks what it could be. This is particularly timely in the context of Colombia as the government is currently navigating the paths with the most potential to meet the needs of displaced citizens. One particular observation is that though many have fled to urban centers, rural life is actually preferred and desired.

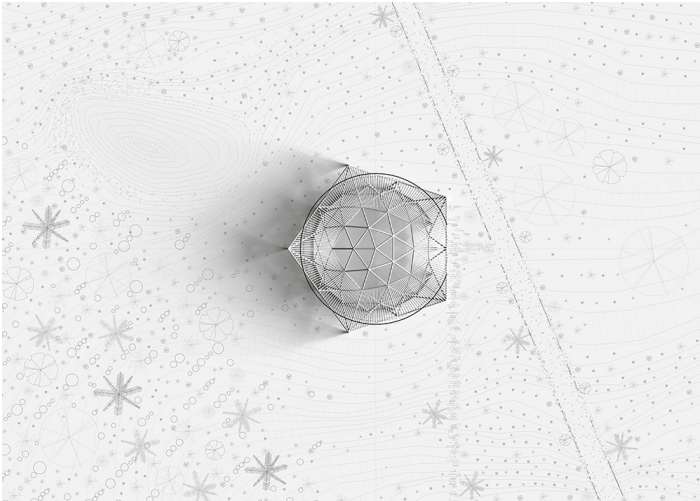


Figure 6. Image is a site plan of the Maloca that was constructed with MinkaLAB by author's design firm

5.0 INTERFACE WITH THE “NON-STANDARD” DESIGN STUDIO

The pedagogical aspect of this work has served as an exploratory space for architecture students to become aware of issues that lay outside standard scope of architecture. The series of studios has developed narratives that address the strange nature of our reality that is anything but standard: The prompt for the students stated, “We are situated on planet earth in an epoch unofficially known as the Anthropocene. We reap the benefits of an industrialized, technologically advanced and connected society; however, we also inherit the consequences, which include political instability, de-territorialization, accelerationism and environmental catastrophe. Confronting these truths means that we must question the “standards” which regulate service and industry and the “standard” modes of architectural practice.” Students who chose the Nonstandard Studio were challenged to think critically about the role of design amidst volatile global conditions. Participants were encouraged to think outside of the box and create hypotheses about what agency design and architecture have to address these conditions. Digital tools were used to probe these conjectures and take projects a step further. Modelling, simulation, visualization and fabrication served as iterative procedures that were vital for a rigorous and revealing design process. Mapping with GIS and analyzing the data available were two of the activities that allowed students to trace displacement, analyze the relationship to territorial occupation and visualize this phenomenon through geographical notation. This part of the design research shed light on the way that instability of forced displacement has influenced the cultural production of the built environment in Latin America.

CONCLUSIONS

This research is on-going and has yet to be conclusive. Up to this point, one lesson worth sharing and discussing is the degree of difficulty that developing these projects entail. Places in such a state of flux do not easily permit strategy to be planned, enacted and studied.

Maneuvering changes in politics, economic conditions, zoning and trade agreements are but a few of the variables that will affect the building industry in the post conflict era. As these issues are outside the control of a designer, it is futile to develop a strategy that is obsolete before it can be carried out. Therefore, the focus must be on tactics. In *The Practice of Everyday Life*, Michel de Certeau explains that a tactic is set up “on and with a terrain imposed on it and organized by the law of a foreign power.” As architects, we understand that we “must vigilantly make use of the cracks that particular conjunctions open in the surveillance of the proprietary powers. It poaches in them. It creates surprises in them.”

The case studies included in this article shed light on several ways that acts of co-creation are being developed in Colombian communities. It is premature to offer conclusions and so in lieu of results; this paper articulates how we are probing dis-junctions in the post-conflict context of Colombia that has left a massive amount of people displaced and living in precarious habitats. The tactical acts being undertaken in both urban and rural areas are used to illustrate innovative forms of developing stronger communities through conversation, collaboration, co-creation, design and construction. The provocation is that the dissemination and debate of this work will lead to another level of articulation that would be of benefit for architects confronting design problems for populations that have been displaced.

ACKNOWLEDGEMENTS

First and foremost, I would like to thank Encuentro con la Vida, Ciudadela Sucre, Minka Lab, Santa Rosa de Cabal, Comun Lab the communities I have worked with. Their solidarity, commitment to doing transformative work and collaborating with academics is what makes this research possible. The work described in this paper is part of a large constellation of projects underway in Colombia and each of these projects relies on an even larger network of people. The contribution of my Colombian colleagues has greatly enriched the work. In particular, the critical initiatives of Maria Ximena, Sergio, Maria Alejandra, Walter, and Juan Manuel have been inspirational and collaborations with Gabriel, Kata, Ivan, Andres, David, Luca, Camilo, Alejo, and Javier have been powerful. I thank each of you for maintaining a critical dialogue about this work. Lastly, I would like to thank Universidad Piloto for supporting this work.

REFERENCES

- Castells, Manuel. 1998. *End of Millenium*. Cambridge, Mass.: Blackwell.
- Castells, M. 2010. *The Rise of the Network Society*. Oxford: Wiley-Blackwell
- Certeau, Michel de. 1984. *The Practice of Everyday Life*. Berkeley: University of California Press.
- Latour, Bruno, Peter Weibel, and Christine Weber. *Making Things Public: Atmospheres of Democracy* ; March 20 - August 07, 2005 ZKM Karlsruhe. Karlsruhe: ZKM, 2005.
- Fals-Borda, O. 2001. “Participatory action research in social theory: Origins and challenges”. in P. Reason & H. Bradbury (Eds). *Handbook of action research: Participatory inquiry and practice* (pp.27-37) Thousand Oaks, California: Sage.
- Freire, P. 1970. *Pedagogy of the Oppressed*. New York: Seabury Press.
- Latour, Bruno, Peter Weibel, and Christine Weber. 2005. *Making Things Public: Atmospheres of Democracy* ; March 20 - August 07, 2005 ZKM Karlsruhe. Karlsruhe: ZKM.
- Selenger, D. 1997. *Participatory action research and social change*. New York: Cornell University Participatory Action Research Network, Cornell University; 1st edition