

学位論文

Heat Shock Protein27 Expression and Cell
Differentiation in Ameloblastomas
(エナメル上皮腫における Heat Shock Protein27
の発現と細胞分化)

藤田 宗輝

大学院歯学独立研究科 硬組織疾患制御再建学講座
(主指導教員：川上 敏行 教授)

松本歯科大学大学院歯学独立研究科博士(歯学)学位申請論文

Heat Shock Protein27 Expression and Cell
Differentiation in Ameloblastomas

Muneteru Fujita

Department of Hard Tissue Research, Graduate School of Oral Medicine
(Chief Academic Advisor : Professor Toshiyuki Kawakami)

The thesis submitted to the Graduate School of Oral Medicine,
Matsumoto Dental University, for the degree Ph.D. (in Dentistry)

要旨

エナメル上皮腫は歯原性上皮に起因する最も一般的な腫瘍で、口腔外科領域では極めて重要である。病理組織学的にその組織像はバリエーションに富み、同一症例の組織内においても種々の細胞分化がみられ、極めて多彩である。したがって、その腫瘍細胞の分化に関する知見の集約は治療の上からも重要な研究課題であると思われる。HSPs は平衡状態の細胞内に広く分布するタンパクであり、細胞の分化、増殖、生存、機能維持など様々な細胞の営みに必須であることが判明してきている。しかし、エナメル上皮腫における HSPs に関する研究はほとんどされていない。そこで今回、これらについて免疫組織化学(IHC)的に検討した。

愛知学院大学歯学部口腔病理学講座より提供されたエナメル上皮腫、計 40 症例における HSP27 と pHSP27 の検討を行い、エナメル上皮腫の細胞の組織型、部位による発現差などについて明らかにするとともに、サイトケラチン(CK)も同時に行い、腫瘍胞巣を構成する細胞の細胞分化の様相とともに詳細に検討した。

HSP27 は、濾胞型では胞巣中央部が強い陽性反応を示し、とくに扁平上皮化生を起こしている部位や、実質嚢胞辺縁の細胞に強く表れていた。しかし、腫瘍実質を形成する細胞のうち、胞巣を形成している最外層の立方形や高円柱形の細胞にはほとんど陰性であった。一方、叢状型では発現状態に強弱が認められる部位もあったが、ほぼ全ての細胞が陽性を示していた。pHSP27 は、HSP27 とほぼ同様の傾向であった。すなわち、濾胞型では胞巣中央部が強い陽性反応を示していた。とくに扁平上皮化生を起こしている部位に強く、変性・融解により実質嚢胞を形成している部位では、実質嚢胞辺縁の細胞が陽性のことが多かった。また、胞巣の最外層の立方形や高円柱形の細胞はほとんど陰性反応であった。叢状型では細長く伸びる胞巣全体の細胞が強く染色されていた。HSP27 と pHSP27 との比較では、ほぼ同部位が染色されていたが、一般に pHSP27 の方がより強い陽性反応を示した。なお、腫瘍間質は血管内皮細胞や間質線維芽細胞に極めてわずかに陽性を示す細胞があるものの、組織型による差異はなかった。

CK について、CK8 は主に叢状型腫瘍胞巣を形成する立方形の細胞に発現しており、濾胞型にはほとんど発現していなかった。CK13 は濾胞型の中央部の有棘細胞様の形態をした細胞に限局的に発現していた。しかし、叢状型ではほとんど発現していなかった。CK14とCK19はどちらも濾胞型、叢状型いずれの腫瘍胞巣にも広範に発現していた。CK14は、扁平な形態をした細胞が何層にもなっている部位で強く染色されていた。CK19 は腫瘍細胞全体が強く染色されていたが、実質内部の扁平上皮化生を起こしている部位や星形細胞は特に強い染色像が観察された。

pHSP27とCK8による蛍光免疫二重染色では、濾胞型では胞巣中央部の扁平上皮化生した細胞が pHSP27 に強く陽性反応を示したが、CK8 にはほとんど反応を示さなかった。しかし、叢状型では立方形の腫瘍実質細胞が pHSP27 と CK8 どちらも同様の陽性反応を示し、マージにより一致した。一方、pHSP27 と CK13 では、濾胞型ではどちらも胞巣中央部の細胞が強く陽性反応を示し、完全にマージしたが、叢状型では pHSP27 は立方形細胞が陽性反応を示したのに対し、CK13 ではほとんど発現していなかった。

以上、HSP27、pHSP27 がこれらの細胞の扁平上皮化生への分化に関与しているのではないかと考えられた。IHC で得られた結果、すなわち、濾胞型胞巣の内部では、CK13 が強く陽性を呈し、扁平上皮様性格を帯びていること、そしてその部に一致して HSP27 が強い陽性を示したことは、この細胞分化に強く関与していることを示唆している。また、濾胞型では陽性反応率の高くない立方形細胞が叢状型の実質を形成するそれでは高くなっていることから、HSP27、pHSP27 が組織型の決定にも関与しているのではないかと考える。

Research Paper

Heat Shock Protein27 Expression and Cell Differentiation in Ameloblastomas

Muneteru Fujita¹, Keisuke Nakano^{1,4}✉, Akiyoshi Funato², Yoshihiko Sugita^{2,5}, Katsutoshi Kubo^{2,5}, Hatsuhiro Maeda^{2,5}, Norimasa Okafuji³, Hiromasa Hasegawa^{1,4} and Toshiyuki Kawakami¹

1. Hard Tissue Pathology Unit, Matsumoto Dental University Graduate School of Oral Medicine, Shiojiri, Japan;
2. Department of Oral Pathology, School of Dentistry, Aichi Gakuin University, Nagoya, Japan;
3. Clinical Evaluation Unit, Matsumoto Dental University Graduate School of Oral Medicine, Shiojiri, Japan;
4. Department of Oral Pathology, Matsumoto Dental University School of Dentistry, Shiojiri, Japan;
5. Center for Advanced Oral Science, Aichi Gakuin University, Nagoya, Japan.

✉ Corresponding author: Dr. Keisuke Nakano, DDS, PhD, Associate Professor. Hard Tissue Pathology Unit, Matsumoto Dental University Graduate School of Oral Medicine, Shiojiri, 399-0781 Japan. Phone +81-263-51-2035; Fax +81-263-51-2035; E-mail keisuke1@po.mdu.ac.jp.

© Ivyspring International Publisher. This is an open-access article distributed under the terms of the Creative Commons License (<http://creativecommons.org/licenses/by-nc-nd/3.0/>). Reproduction is permitted for personal, noncommercial use, provided that the article is in whole, unmodified, and properly cited.

Received: 2013.05.02; Accepted: 2013.07.18; Published: 2013.08.03

Abstract

The expression of HSP27 and some CKs were examined the 40 cases of typical solid/multicystic ameloblastoma using immunohistochemical techniques. In order to examine the relevance of HSP in cell differentiation, we focused on the cytoskeletal expression of CK. CK19 is a marker of typical odontogenic epithelium widely observed in follicular and plexiform types of ameloblastomas. Since staining with CK14 is one of the measures of the differentiation potential of squamous cells and is extensively expressed in both follicular and plexiform types, it implies that squamous differentiation of each type can occur. CK8 was strongly detected in tumor nests in plexiform type but weakly detected in follicular type. It was considered that the expression of HSP27 in plexiform type correlated with the expression of CK8 suggesting that HSP27 might have regulated the expression of CK8.

Key words: ameloblastoma, immunohistochemistry, HSP, CK, cell differentiation.

Introduction

Ameloblastoma is one of the most common tumors from odontogenic epithelium. Although clinically classified as benign, ameloblastoma has a high risk of recurrence because it is locally invasive making it an important neoplasm in the field of Oral Surgery (1). Several histopathological variants and cell differentiation in the same tumor may be observed. Thus, investigation on the differentiation of tumor cells is an important research aspect for its therapeutic management.

Heat shock proteins (HSPs) which are widely distributed in cells were found to be essential in a variety of functions like maintenance of state of homeostasis, cell differentiation, proliferation, survival, etc. (2, 3). Search of literatures revealed no other

studies on HSPs in ameloblastoma with exception of two studies (4,5). The one revealed that HSP27 localized in human tooth germ is essential in cell growth. Moreover, the expression of HSP27 in ameloblastoma suggested its essential role in tumor development (4). The later, the localization and differential expressions of HSP27 and phosphorylated HSP27 (pHSP27) in histopathological subtypes of ameloblastoma were investigated suggesting the role of HSP27 in the differentiation of tumor cells (5). However, since the results were based on a limited number of specimens, new a large number of cases were added to previous cases stained with HSP27/pHSP27. Immunohistochemistry (IHC) of cytokeratins (CKs) was also carried out for further inquest. In this study, cell mor-

phology as well as cell differentiation in the tumor nests were analyzed.

Materials and Methods

Specimens used were from the archives of the Department of Oral Pathology, School of Dentistry, Aichi Gakuin University. A total of 40 cases of ameloblastoma were reevaluated histologically and categorized based on WHO classification. The mean age of the patients is 27.4 years consisting of 24 males and 16 females. Four tumors were located in the maxilla and 36 were found in the mandible (Table 1). Samples were fixed in 4% neutral buffered formalin solution, dehydrated in series of alcohol, embedded in paraffin, sectioned into 5 μ m thickness, stained with HE and examined under a microscope. For IHC, sections were deparaffinized and treated with Dako Proteinase K (Dako Co, Ltd, Tokyo, Japan) for 5 min at room temperature. Staining was carried out using Dako Chem Mate Envision Kit/HRP (Dako Co, Ltd, Tokyo, Japan). The primary antibodies used were mouse monoclonal anti-HSP27 (HSP27 antibody, G3.1, ab2790, Abcam Ltd, Tokyo, Japan; 1/5000) and rabbit polyclonal anti-pHSP27 (p-HSP27 (Ser 15), sc101699, Santa Cruz Biotechnology Inc, Heidelberg, Germany; 1/5000). Antigenic sites were revealed using DAB. For CK8, 13, 14 and 19, the primary antibodies used were mouse monoclonal anti-CK8 (Cytokeratin8, 6B10, NCL-CK4, Novocastra Laboratories Ltd, Newcastle, UK; 1/100), mouse monoclonal anti-CK13 (Cytokeratin13, KS-1A3, NCL-CK13, Novocastra Laboratories Ltd, Newcastle, UK; 1/100), mouse monoclonal anti-CK14 (Cytokeratin14, LL002, NCL-LL002, Novocastra Laboratories Ltd, Newcastle, UK; 1/20) and mouse monoclonal anti-CK19 (Cytokeratin19, b170, NCL-CK19, Novocastra Laboratories Ltd, Newcastle, UK; 1/100).

Table 1. Cases examined.

Age	Sex	Location
Average 27.6	Male 24	Maxilla 4
	Female 16	Mandible 36

IHC positive reaction was determined without considering the intensity (lightly-stained cells were also counted). The cells were identified and classified as columnar basal cells, cuboidal basal cells, cells which formed squamous metaplasia, stellate reticulum cells and fibroblasts in the stroma. Positive-cell count was determined in the 40 high-power field. Positive index was defined as the ratio of positive cells to total cells.

Double staining was done using fluorescent goat polyclonal anti-pHSP27, anti-CK8 and anti-CK13 antibodies. The localization was checked for the combinations of pHSP27-CK8 and pHSP27-CK13. For pHSP27-CK8, slides were deparaffinized and pre-treated with citrate buffer in microwave for 1 min, followed by blocking protein block, serum-free (Dako Co., Tokyo, Japan) for 30 min at room temperature. Slides were incubated with primary antibodies with a dilution of 100x each for anti-pHSP27 and anti-CK8 and allowed to react overnight at 4°C. This was followed by incubation with secondary antibodies using Alexa Fluor 594 Labeled goat anti-rabbit IgG (Molecular Probes, Tokyo) and Alexa Fluor 488 Labeled goat anti-mouse IgG (Molecular Probes, Tokyo). Secondary antibodies diluted in Can Get Signal (200x, TOYOBO Co., Ltd., Osaka, Japan) which were allowed to react for 60 min at room temperature. DAPI (1 μ g/ml) was allowed to react for 3 min. Then after, slides were washed with TBS and mounted using Fluorescent Mounting Medium (Dako). For pHSP27-CK13, slides were deparaffinized and pre-treated with citrate buffer in microwave for 1 min, followed by blocking with protein block, serum-free for 30 min at room temperature. Slides were incubated with primary antibodies with a dilution of 100x each for anti-pHSP27 and anti-CK13 and allowed to react overnight at 4°C. This was followed by incubation with secondary antibodies using Alexa Fluor 594 Labeled goat anti-rabbit IgG and Alexa Fluor 488 Labeled goat anti-mouse IgG. Secondary antibodies diluted in Can Get Signal (200x) which were allowed to react for 60 min at room temperature. DAPI (1 μ g/ml) was allowed to react for 3 min. Then after, slides were washed with TBS and mounted using Fluorescent Mounting Medium (Dako).

The present study was approved by the Ethics Committee Review of School of Dentistry Aichi Gakuin University (No. 179; Date: May 29, 2009).

Results

The cases examined consisted mostly of follicular type although plexiform type was also observed. Large numbers of varied size islands of tumor nests embedded in fibrous stromal tissues were observed. The follicular type composed of cuboidal or columnar cell layers, which nuclei comparatively strong stained with hematoxylin, surrounded by a fibrous stroma. Inside the tumor nests, squamous metaplasia and cystic degeneration were noted. The plexiform type consists of cuboidal cells having reticular or trabecular growth.

In plexiform type, although the cells were weakly stained, almost all cells showed positive reaction (Fig. 1 A). The central part of the tumor nest in

follicular type showed positive reaction to HSP27 particularly the sites with squamous metaplasia which was strongly reflected in the marginal cells of the parenchyma (Fig. 1 B). However, the peripheral cuboidal and/or columnar cells forming the tumor parenchyma were mostly negative.

IHC of pHSP27 revealed similar results with HSP27. The central part of tumor nest in follicular type showed strong positive reaction particularly the sites with squamous metaplasia (Fig. 1 C), as well as

those with cystic degeneration lining the parenchyma (Fig. 1 D). On the other hand, the peripheral columnar and/or cuboidal cells were mostly negative. In plexiform type, tumor cells making up the parenchyma were strongly positive (Fig. 1E, F). HSP27 and pHSP27 expressions were observed in the same sites although the intensity of pHSP27 was stronger. Some fibroblasts and vascular endothelial cells in the stroma were slightly stained showing no difference between the 2 histological types.

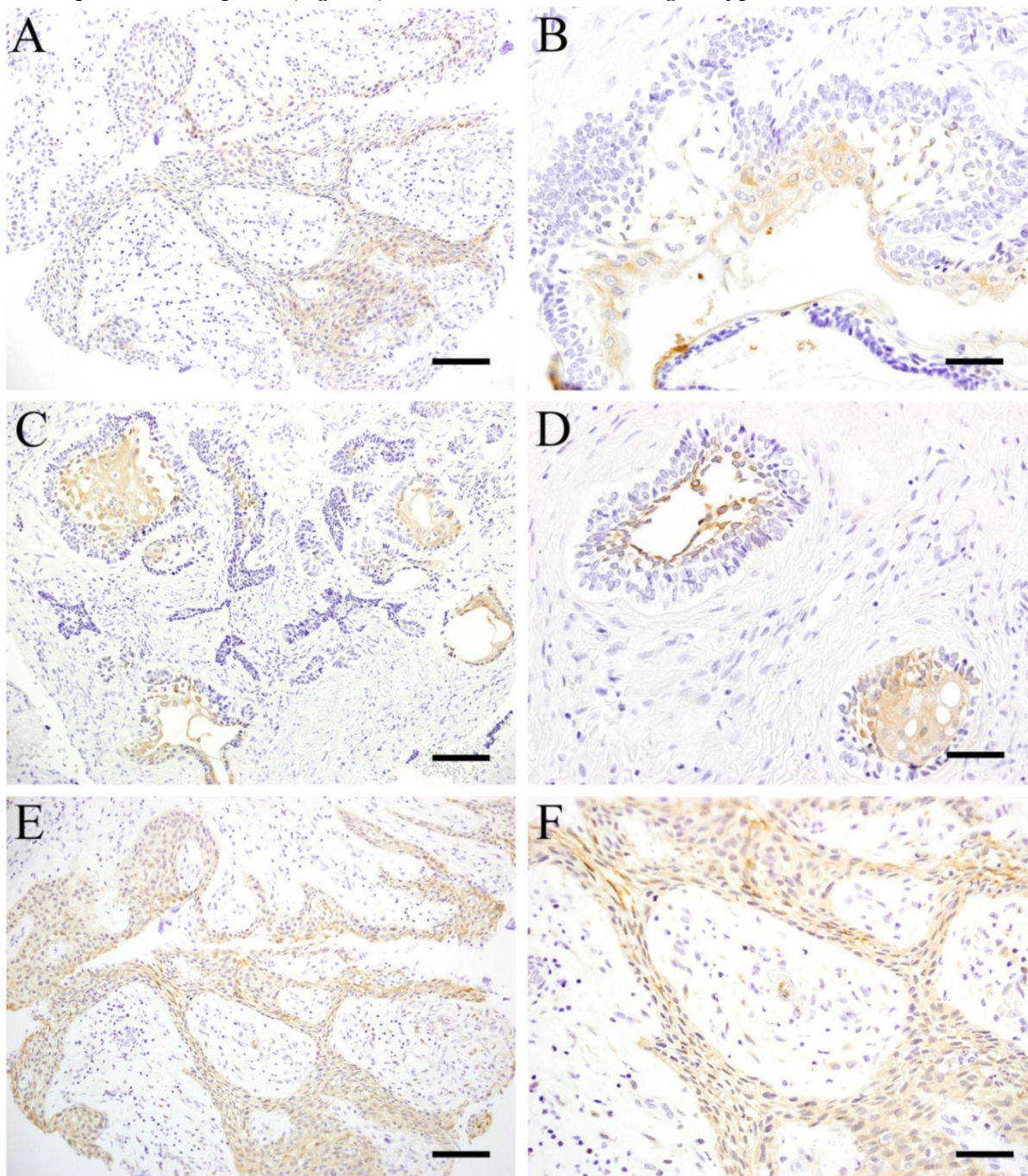


Fig 1. ICH of pHSP27 in follicular type and plexiform type. A: HSP27, Case 14: 10-year-old female, Scale bar=50 μ m; B: HSP27, Case 22, 42-year-old male, mandible, Scale bar=100 μ m; C: Case 22: 42-year-old male, mandible, Scale bar=50 μ m; D: Case 22: 42-year-old male, mandible, Scale bar=100 μ m; E: Case 14: 10-year-old female, mandible, Scale bar=50 μ m; F: Case 14: 10-year-old female, mandible, Scale bar=100 μ m

Table 2 shows the quantitative results of IHC. No significant difference was obtained in the number of cells stained with HSP27 and pHSP27. However, more cells strongly expressed pHSP27 compared to HSP27 especially in the area of squamous metaplasia in follicular type. Moreover, almost all stellate reticulum cells in the center of parenchyma expressed HSP27 with a positive rate of 89.3% compared to the 69.4% positive rate obtained in pHSP27. Nevertheless, the positive rate of columnar cells was 3.8% in HSP and 3.2% in pHSP27 showed no significant difference. The positive rate in cuboidal cells in HSP27 and pHSP27 showed almost the same scores having 4.3% and 4.6% respectively. In the follicular type, the average positive rate of fibroblasts and vascular endothelial cells that make up the stromal cells were 3.3% in HSP27 and 1.0% in pHSP27. In plexiform type, cuboidal cells showed 86.1% positive rate for HSP27 and 78.6% for pHSP27. Positive reaction rates in fibroblasts and vascular endothelial cells were comparable in follicular type (Table 2).

Table 2. IHC scores in each cell type (%).

	HSP	Follicular	Plexiform	pHSP	Follicular	Plexiform
Columnar cells	3.8	—	—	3.2	—	—
Cuboidal cells	4.3	86.1	—	4.6	78.6	—
Squamous cells	99.0	—	—	99.0	—	—
Stellate reticulum cells	89.3	—	—	69.4	—	—
Stromal cells	3.3	4.6	—	1.0	1.3	—

CK8 was mainly expressed by cuboidal cells in plexiform type (Fig. 2 A, B) and almost not detected in follicular type. CK13 was focally expressed by squamous-like cells at the center of the tumor nests in follicular type (Fig. 2 C, D). However, it was not detected in plexiform type. Both CK 14 and 19 were detected in follicular and plexiform types. CK14 was strongly expressed by squamous cells in the inner layer of the parenchyma (Fig. 2 E). CK19 was strongly expressed by tumor cells strongly especially at the sites with squamous metaplasia and stellate reticulum cells (Fig. 2 F).

Double immunofluorescent staining revealed in follicular type, both pHSP27 (Fig. 3 A) and CK13 (Fig. 3 B) were detected in tumor cells and in the central part of the parenchyma with almost merging (Fig. 3 C) of the stains. In plexiform type, only cuboidal cells showed positive reaction to pHSP27 but negative to CK13. On the other hand, immunofluorescent staining

of pHSP27 and CK8 showed that in follicular type, strong positive reaction to pHSP27 in the center of the parenchyma with squamous metaplasia but almost negative reaction to CK8. However, in plexiform type, cuboidal cells expressed both pHSP27 (Fig. 3 D) and CK8 (Fig. 3 E) with a merging (Fig. 3 F) of the positive reaction.

Discussion

Many researchers have explored the aspects of cell differentiation in ameloblastoma and in other tumors derived from odontogenic epithelium. In our previous studies, the expression of Notch and its associated factors in transcriptional regulation controlling cell differentiation and morphogenesis were investigated in various odontogenic tumors such as ameloblastoma (6-11), squamous odontogenic tumor (12) and calcifying cystic odontogenic tumor (13).

There was a literature examined the localization of Notch signaling molecules in ameloblastomas (6). Notch signaling in peripheral cuboidal cells had weak expression but columnar cells had strong expression. The differential expression in Notch signaling induced the cells to differentiate from columnar cells (having weak expression) to cuboidal cells (having strong expression). The weak expression in cuboidal cells enabled them to retain their shape prior to differentiating into squamous metaplastic cells in the inner nest of the parenchyma which showed strong Notch expression. In addition, the development of other types of ameloblastoma was probably caused by the differentiation of squamous cells from the plexiform type (14). Thus, Notch signaling was thought to have a major role in the acquisition of the characteristic cells in ameloblastoma. In this study, we focused on the localization of HSP27 as one of the factors involved in cell differentiation.

As the major protein expressed by various tissues and organs due to mechanical stimulation and stress cytotoxicity, HSPs are known to increase temporarily by heat shock (15). HSP is not only caused by heat shock but its expression is also caused by various stresses like pathological changes, radiation, enzyme, heavy metals, arsenic, ethanol, amino acid derivatives, etc (16). Furthermore, it is seen in damaged cells involved in repair and defense and functions in maintaining cellular homeostasis (17). HSPs are classified according to structure and molecular weight. HSP27 is classified as a low molecular weight protein involved in cell growth and differentiation as a molecular chaperone (18, 19). Many HSPs are known to be expressed in response to stress, suppression of denaturation of proteins and repair of denatured proteins. In addition, HSPs were recently implicated in a variety of cell differentiation (20).

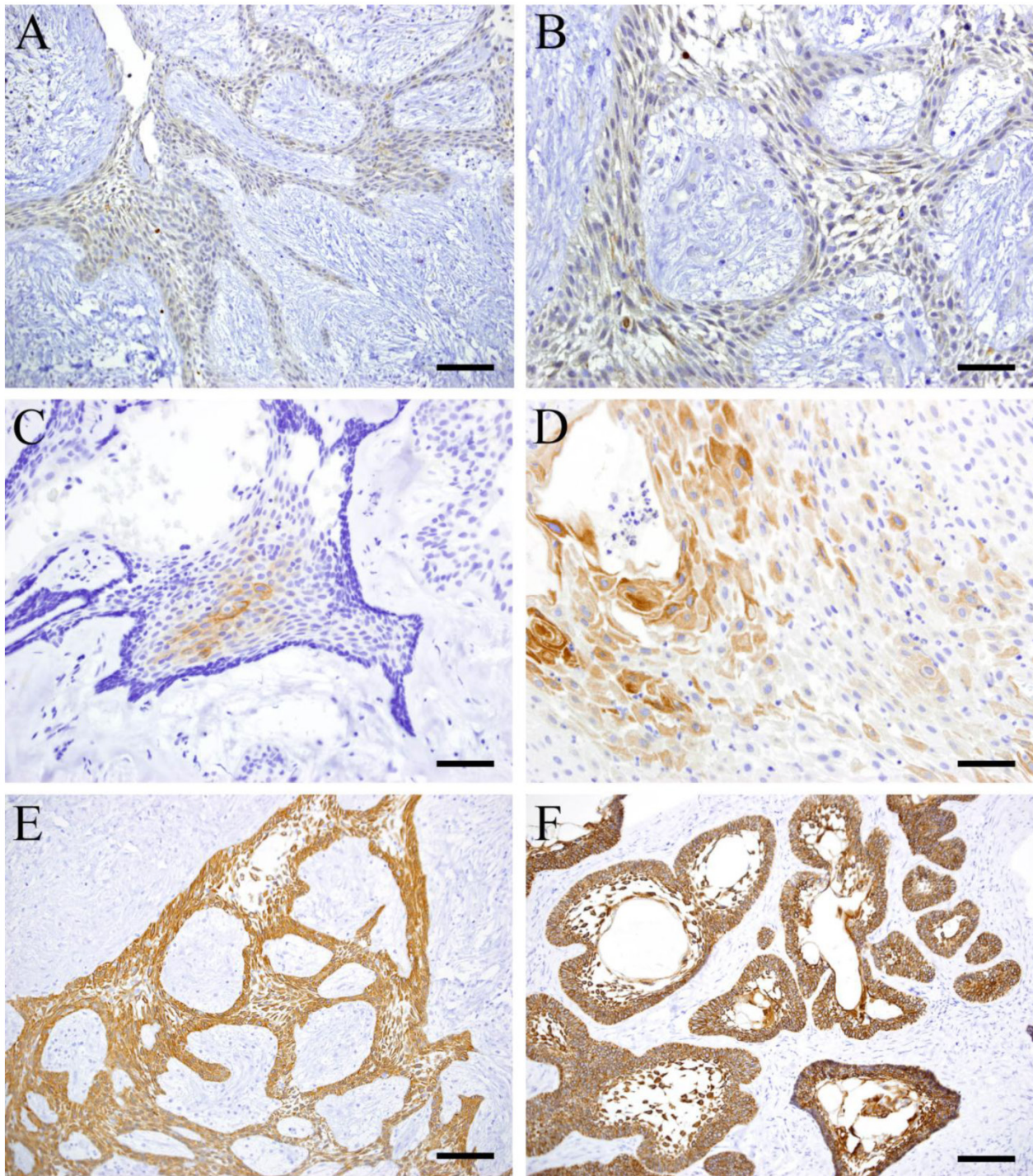


Fig 2. IHC of CK 8, 13, 14 and 19. A: CK8, Case 18: 30-year-old female, mandible, Scale bar=100 μ m; B: CK8, Case 18: 30-year-old female, mandible, Scale bar=50 μ m; C: CK13, Case 5: 29-year-old male, mandible, Scale bar=100 μ m; D: CK13, Case 23: 51-year-old male, mandible, Scale bar=50 μ m; E: CK14, Case 18: 30-year-old female, mandible, Scale bar=100 μ m; F: CK19, Case 22: 42-year-old male, mandible, Scale bar=100 μ m

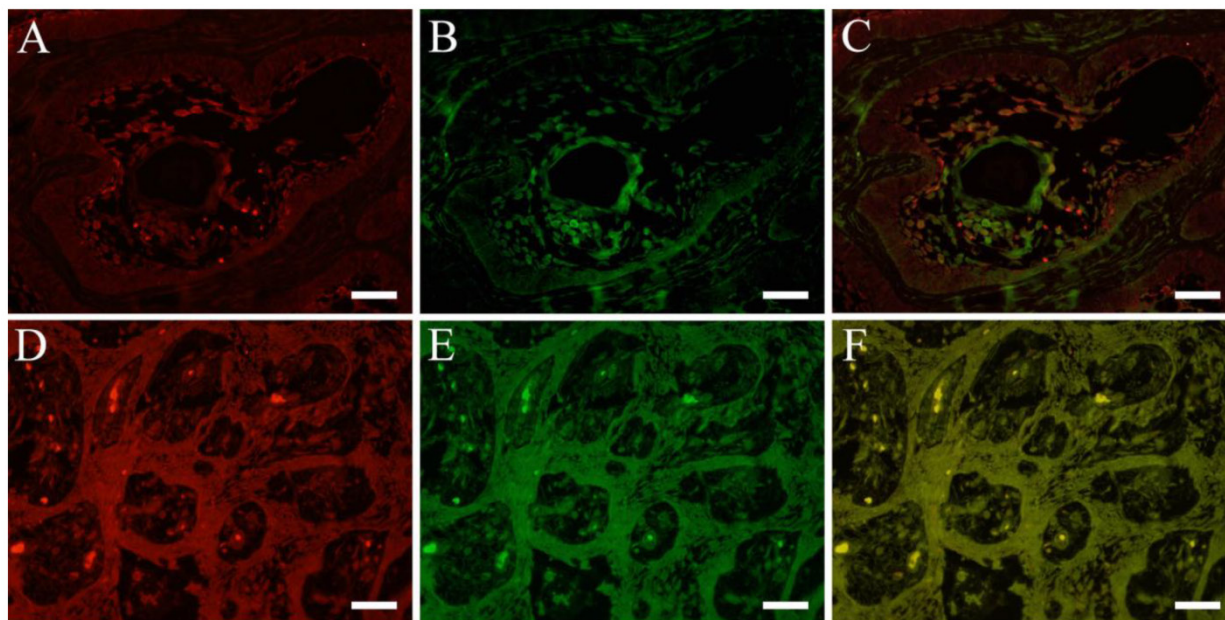


Fig 3. IFHC of pHSP27 , CK8 and CK13. pHSP27 (red) and CK8 (green) (A: pHSP27, B: CK13, C: pHSP27+CK13; Case 22: 42-year-old male, mandible), pHSP27 (red) and CK13 (green) (D: pHSP27, E: CK8, F: pHSP27+CK8; Case 14: 10-year-old female, mandible), Scale bar=50 μ m.

The relevance of HSP27 in ameloblastoma was investigated in this study. HSP27 is present as a polymer (if not stimulated) but is phosphorylated in response to stress or other factors and is capable of varying the dimer of a polymer. The activity of HSP27 can be regulated by post-transcriptional modification such as phosphorylation. Serine (Ser) residues in human HSP27 were reported to be phosphorylated in three sites such as Ser-15, Ser-78 and Ser-82 (21) which can play a role in the change from HSP27 to pHSP27. In this regard, we decided to examine both HSP27 and pHSP27 to observe the difference in the expression and localization in ameloblastomas. The expression of HSP27, 60 and 70 in ameloblastomas were examined by IHC (4). The results showed that HSP27 was detected in odontogenic epithelial cells in tooth germ and in benign and malignant ameloblastoma. It was also widely detected in dental lamina and enamel organ in tooth germ and slightly detected in dental papilla and mesenchymal cells in dental follicle. Moreover, HSP27 was expressed by both tumor cells in benign and malignant ameloblastoma in a wide range but weakly expressed by fibroblasts and endothelial cells in the stroma. The results of this study are similar to those reported in the literature (4) where in HSP27 was strongly expressed by tumor cells in ameloblastoma but not by fibroblasts and vascular endothelial cells in the stroma. In the literatures, Notch was expressed by fibroblasts in the stroma of ameloblastoma but HSP27 in our examination was hardly detected (6). Therefore, it would show that Notch and HSP27 are not working strongly in those

regions. However, because there were no detections of specifically mentioned the type of cell, a positive reaction status for each cell type was assumed (4).

In order to examine the relevance of HSP in cell differentiation, we focused on the cytoskeletal expression using some CKs. CK19 is a marker of typical odontogenic epithelium widely observed in follicular and plexiform types of ameloblastoma (22-26). Since staining with CK14 is one of the measures of the differentiation potential of squamous cells and is extensively expressed in follicular and plexiform types, it implies that squamous differentiation of each type can occur. This is consistent with the HE findings in our specimens. Moreover, CK13 was expressed mostly by squamous-like cells in the tumor parenchyma obviously undergoing squamous metaplasia. CK8 was strongly detected in tumor nests in plexiform type but weakly detected in follicular type. These results suggest that the positive reaction appear in comparatively un-developed cells of plexiform type. These cells have a possibility of differentiation in neoplastic cell nests. It was considered that the expression of HSP27 in plexiform type correlated with the expression of CK8 suggesting that HSP27 may have regulated the expression of CK8. Double immunofluorescence revealed weak reaction to pHSP27 and CK13 in cuboidal cells and tall columnar cells in the parenchyma of follicular type ameloblastoma. On the other hand, intense epHSP27 and CK13 expressions in stellate-shaped cells and in squamous metaplasia were observed. Squamous-shaped cells that form the tumor parenchyma of plexiform type were entirely and uniformly

stained with pHSP27. There was no difference in the localization and rate of expression between HSP27 and pHSP27 although HSP27 was stronger in some cells. Results showed high positive reaction rate in stellate-shaped cells and those cells undergoing squamous metaplasia in the parenchyma of follicular type. Tumor cells in ameloblastoma have short life span resulting to cells mostly having squamous characteristics in primary cultures collected from the lesion (22). It is believed that injury to the tumor cells occurred during tissue collection resulting to the activation of HSPs. It is suggested that HSPs are involved in the differentiation of the columnar and cuboidal tumor cells to squamous cell in tissue cultures of ameloblastoma. Development in the technology in cultivating tumor cells in ameloblastoma occurred recently as well as research in cell differentiation in ameloblastoma (22). It is considered that HSP27 and pHSP27 were involved in the transformation of tumor cells to squamous metaplasia. Since findings of the study were similar to IHC expression pattern of Notch by Muraki et al, it is suggested that HSP27 was strongly involved in cell differentiation such as the formation of squamous metaplasia in follicular nests. Since HSP27 expression was similar to CK13, it can be inferred that both molecules are involved in cell differentiation. The relative expression of HSP27 and pHSP27 in plexiform type suggests that the molecules may be involved in the determination of histopathological type.

Acknowledgments

This study was supported in part by a Grant-in-Aid for Scientific Research (C) (#, 23592951) from the Japan Society for the Promotion of Science.

Competing Interests

The authors have declared that no competing interest exists.

References

- Gardner DG, Heikinheimo K, Shear M, Philipsen HP and Cleman H. Ameloblastomas. In: Barnes L, Eveson JW, Reichart P and Sidransky D, eds. World Health Organization Classification of Tumours: Pathology and Genetics of the Head and Neck Tumours. Lyon, France: IARC Press. 2005: 296-300.
- Linndoquist S. The heat shock response. *Ann Rev Biochem* 1986; 55: 1151-91.
- Gething MJ and Sambrook J. Proteins folding in the cell. *Nature* 1992; 355: 33-45.
- Kumamoto H, Suzuki T and Ooya K. Immunohistochemical analysis of inducible nitric oxide synthase (iNOS) and heat shock proteins (HSPs) in ameloblastomas. *J Oral Pathol Med* 2002; 31: 605-11.
- Fujita M, Nakano K, Maeda H, Yoshida W, Torii R, Yoshiyama M, Okafuji N, Hasegawa H and Kawakami T. Immunohistochemical observation of HSP27 in ameloblastomas. *J Hard Tissue Biol* 2011; 20: 289-94.
- Muraki E, Nakano K, Maeda H, Takayama M, Jinno M, Kubo K, Yoshida W, Hasegawa H and Kawakami T. Immunohistochemical localization of Notch signaling molecules in ameloblastomas. *Eur J Med Res* 2011; 16: 253-7.

- Siar CH, Nagatsuka H, Han PP, Buery RR, Tsujigiwa H, Nakano K, Ng KH and Kawakami T. Differential expression of canonical and non-canonical Wnt ligands in ameloblastoma. *J Oral Pathol Med* 2012; 41: 332-9.
- Siar CH, Nagatsuka H, Chuah KS, Rivera RS, Nakano K, Ng KH and Kawakami T. Notch4 overexpression in ameloblastoma correlates with the solid/multicystic phenotype. *Oral Surg Oral Med Oral Pathol Oral Radiol Endod* 2010; 110: 224-33.
- Siar CH, Nakano K, Chelvanayagam PI, Ng KH, Nagatsuka H and Kawakami T. An unsuspected ameloblastoma in the subpontic region of the mandible with consideration of pathogenesis from the radiographic course. *Eur J Med Res* 2010; 15: 135-8.
- Siar CH, Nakano K, Han PP, Nagatsuka H, Ng KH and Kawakami T. Differential expression of Notch receptors and their ligands in desmoplastic ameloblastoma. *J Oral Pathol Med* 2010; 39: 552-8.
- Nakano K, Siar CH, Tsujigiwa H, Nagatsuka H, Nagai N and Kawakami T. Notch signaling in benign and malignant ameloblastic neoplasms. *Eur J Med Res* 2008; 13: 476-80.
- Siar CH, Nakano K, Ng KH, Tomida M, Nagatsuka H and Kawakami T. Squamous odontogenic tumor of the mandible: a case report demonstrating immunoreexpression of Notch1, 3, 4, Jagged1 and Delta1. *Eur J Med Res* 2010; 15: 180-4.
- Siar CH, Kawakami T, Buery RR, Nakano K, Tomida M, Tsujigiwa H, Han PP, Nagatsuka H and Ng KH. Notch signaling and ghost cell fate in the calcifying cystic odontogenic tumor. *Eur J Med Res* 2011; 16: 501-6.
- Fukumashi K, Enokiya Y and Inoue T. Cytokeratins expression of constituting cells in ameloblastoma. *Bull Tokyo Dent Coll* 2002; 43: 13-21.
- Milton JS. Heat shock proteins. *J Biol Chem* 1990; 265: 12111-4.
- Saantoro MG. Heat shock factors and the control of the stress response. *Biochem Pharmacol* 2000; 59: 55-63.
- Gething MJ and Sambrook J. Proteins folding in the cell. *Nature* 1992; 355: 33-45.
- Parsell DA and Linndoquist S. The function of heat-shock proteins in stress tolerance: Degradation and reactivation of damaged proteins. *Ann Rev Genet* 1993; 27: 437-96.
- Hendrick JP and Hartl F. Molecular chaperone functions of heat-shock proteins. *Ann Rev Biochem* 1993; 62: 349-84.
- Thonel A, Vandekerckhove J, Lanneau D, Selvakumar S, Courtois S, Hazoume A, Burnet M, Maurel S, Hammann A, Ribeil JA, Zermati Y, Gabet AS, Boyes J, Solary E, Hermine O and Garrido C. HSP27 controls GATA-1 protein level during erythroid cell differentiation. *Blood* 2010; 116: 85-96.
- Landry J, Lambert H, Zhou M, Lavoie JN, Hickey E, Weber LA and Anderson CW. Human HSP27 is phosphorylated at serines 78 and 82 by heat shock and mitogen-activated kinases that recognize the same amino acid motif as S6 kinase II. *J Biol Chem* 1992; 267: 794-803.
- Harada H, Mitsuyasu T, Nakamura N, Higuchi Y, Toyoshima K, Taniguchi A and Yasumoto S. Establishment of ameloblastoma cell line, AM-1. *J Oral Pathol Med* 1998; 27: 207-12.
- Kumamoto H, Yoshida M and Ooya K. Immunohistochemical detection of amelogenin and cytokeratin 19 in epithelial odontogenic tumors. *Oral Diseases* 2001; 7: 171-6.
- Lentini M, Simone A and Carrozza G. Peripheral ameloblastoma: use of cytokeratin 19 and Ber-EP4 to distinguish it from basal cell carcinoma. *Oral Oncology Ex* 2004; 40: 79-80.
- Joon HJ, Jo BC, Shin WJ, Cho YA, Lee JI, Hong SP and Hong SD. Comparative immunohistochemical study of ameloblastoma and ameloblastic carcinoma. *Oral Surg Oral Med Oral Pathol Oral Radiol Endod* 2011; 112: 767-75.
- Kishino M, Murakami S, Yuki M, Iida S, Ogawa Y, Kogo M and Toyosawa S. A immunohistochemical study of the peripheral ameloblastoma. *Oral Diseases* 2007; 13: 575-80.