

ARTICLE TYPE

Computational modeling of the fluid flow in type B aortic dissection using a modified finite element embedded formulation.

Rubén Zorrilla*^{1,2} | Eduardo Soudah^{1,2} | Riccardo Rossi^{1,2}¹Centre Internacional de Mètodes Numèrics en Enginyeria, CIMNE, Barcelona, Spain²Universitat Politècnica de Catalunya, UPC, Barcelona, Spain**Correspondence**

* Email: rzorrilla@cimne.upc.edu

Present Address

CIMNE, C. Gran Capità s/n, Edifici B0, Campus Nord, UPC, 08034 Barcelona

Abstract

This work explores the use of an embedded Computational Fluid Dynamics method to study the type B Aortic Dissection. The use of the proposed technique makes it possible to easily test different Intimal Flap configurations without any need of remeshing. To validate the presented methodology we take as reference test case an *in vitro* experiment present in the literature. This experiment, which considers several Intimal Flap tear configurations (number, size and location), mimics the blood flow in a real type B Aortic Dissection. We prove the correctness and suitability of the presented approach by comparing the pressure values and waveform. The obtained results exhibit a remarkable similarity with the experimental reference data.

Complementary, we present a feasible surgical application of the presented computer method. The aim is to help the clinicians in the decision-making before the type B Aortic Dissection surgical fenestration. The capabilities of the proposed technique are exploited to efficiently create artificial re-entry tear configurations. We highlight that only the radius and center of the re-entry tear need to be specified by the clinicians, without any need to modify neither the model geometry nor the mesh. The obtained computational surgical fenestration results are in line with the medical observations in similar clinical studies.

KEYWORDS:

Aortic Dissection, Surgical Fenestration, Phantom Model, CFD, Embedded Mesh Methods, Level Set Methods, Bio-mechanics, Open Source

1 | INTRODUCTION

The Aortic Dissection (AD) is a cardiovascular disease that results from the tearing of the inner layer of the aortic wall. The blood flow emerging through the tear causes the dissection of the inner (intima) and middle (media) layers of the aorta. The AD is a very severe pathology which often becomes fatal when the blood-filled channel silently ruptures through the outer (adventitia) aortic wall. An early diagnosis and aortic wall resistance assessment is therefore required to prevent the AD to reach such catastrophic scenario.

ADs are classified according to the location of the dissection. Hence, those ADs located in either the ascending region of the aorta or the aortic arch are denoted as ascending ADs or type A ADs. On the contrary, those ADs located in the descending region of the aorta are denoted as descending ADs or type B ADs. Type A ADs typically require surgical interventions, while type B ADs commonly become in a chronic disease with a high long-term morbidity and mortality rates due to the recurrence, the progressive dilatation of lumen and the aortic rupture². Type B ADs survival rate is around the 50 - 80 % at five years and

diminishes to the 30 - 60 % at 10 years. This decrease in the survival expectation is associated to the progressive dilatation of the AD, which commonly has multiple causes. Some of these are the number, location and size of the intimal tears, the elasticity of the intimal flap (IF), the pressure difference between the true (TL) and false lumen (FL) or the high intra-luminal pressure[?], that may result in the rupture of the aortic tissue[?].

Due to the severe, and possibly lethal, nature of the AD disease, it is crucial to quantify the pressure peaks, as well as to locate the points where the dissection tear jets impact. Unfortunately, it is very challenging to clinically measure these magnitudes as it requires the use of invasive techniques. In this context, numerical simulation and *ex-vivo* experiments can play an important role in the study of the chronic AD evolution in order to prevent its possible lethal outcomes[?]. The haemodynamics of the AD disease have been extensively studied using either *ex-vivo* models[?] or experimental phantoms[?]. However, numerical methods have been proved to be a valuable tool to assess the haemodynamics in AD phantom models[?] or to simulate real patient-specific AD scenarios[?]. The majority of these works only consider the fluid dynamics problem, excluding the elastic effects in both the aortic walls and the IF[?].

A natural extension of these works is therefore to consider the IF as a flexible body, leading to the resolution of the AD as a coupled FSI problem. Despite the fact that this approach has been successfully applied in[?], its extension to real medical applications is limited as it is hardly possible to obtain, or even estimate, the mechanical properties of patient-specific IF tissues.

However, it is nowadays possible to efficiently provide a patient-specific aortic wall displacement field by using medical imaging techniques as the 2D and 4D-PC-MRI[?]. This information can be used as input data to model the AD as a moving boundaries CFD problem. This means that the IF (and aortic wall) displacements are considered as boundary conditions (BCs) of the CFD problem, whose solution is thus influenced by the ‘a priori’ known boundary movement. The common approach to handle boundary movements is to use an Arbitrary Lagrangian-Eulerian (ALE) framework[?]. Despite the ALE is possibly the most straightforward approach in these cases, it is known to suffer from large element distortion, or even inversion, when large boundary movements are involved[?].

It is also due consideration that the IF is an extremely thin wall with possibly space varying thickness. Hence, it makes sense to model the IF as a negligible thickness body. Unfortunately, dealing with such zero-thickness structures is particularly challenging from the preprocessing point of view as they require to duplicate their surface mesh in order to consider the ‘positive’ and ‘negative’ pressure sides. Moreover, the mesh generation in these cases is prone to fail as the polygonal representation of the surface mesh may intersect one of its duplicated counterpart due to the machine precision range operations.

Considering all the above mentioned reasons, we decided to model the AD using an embedded mesh method, meaning that the negligible thickness IF is implicitly described by a level set function. This simplification implies that the entire AD volume of fluid is meshed disregarding the IF geometry, skipping thus all the previously mentioned preprocessing complexities (e.g. node and surface duplication)[?]. After the AD fluid volume has been meshed (background mesh), the IF geometry (skin) is superimposed to it to compute the level set function that implicitly represents it.

One of the main advantages of this technique is that there is no necessity to solve any mesh problem if the spatial configuration of the IF evolves in time. The unique requirement is thus to recompute the level set function according to the new IF configuration, which is assumed to be known from a position-time data set. This feature opens the possibility to easily model the flow of patient-specific AD scenarios with moving IF as it is nowadays straightforward to obtain the time evolution of the IF by using non-invasive medical imaging techniques such as the 4D-PC-MRI[?].

An extra motivation to use the presented embedded approach in the AD modelling scenario is the possibility to simplify the fluid flow assessment during the decision making before the fenestration surgical intervention. Aortic fenestration is a method to decrease high pressures in the hypertensive FL. This treatment is performed by creating an artificial tear in the IF with the objective of making possible the return flow from the FL to the TL. This change in the IF geometry reduces the FL intraluminal pressure, decreasing thus the dilatation risk of the FL. The use of the embedded approach offers the possibility of testing as many re-entry tears as needed by only updating the level set function that describes it, requiring no modification nor re-meshing in the background mesh. Thanks to this feature of the presented method, the new modified IF models can be straightforwardly set up.

This work is the first part of a new research line that aims to exploit embedded mesh methods for the more efficient assessment of the AD haemodynamics. One of the objectives of the present work is to prove that the AD CFD problem can be alternatively solved using embedded mesh methods, being their solution comparable to traditional body conforming (also known as body fitted) approaches in terms of accuracy and efficiency. To that purpose, we take as reference the work described in[?] and[?], where several *in-vitro* AD experiments are reproduced. It is due mentioning that there exists previous studies[?] that also reproduced the *in-vitro* experiments in[?] which we take as reference. In all these publications the authors used an *in-silico* body conforming CFD numerical approach. It is important to remark that in these *in-silico* experiments the IF was considered to be

a rigid body. This assumption explains the minor differences than can be appreciated when these results are compared with the experimental ones in². The fact that the our reference works consider the IF as a rigid body as well as the absence of the IF displacement data in² lead us to also take the rigid IF assumption.

Complementary, this work also aims to exploit the capability to easily generate different IF geometries to study surgical fenestration technique. Thus, we also present a handy method to artificially generate (and assess) the re-entry tears by only setting the center and the radius of the new fenestration tears.

The paper is organized as follows. Section 2 describes the main concepts of the level set approach and presents the governing equations of the embedded CFD model used for the simulation of the AD. Next, in Section 3 geometry, fluid properties and boundary conditions corresponding to the considered AD cases are presented. In Section 4.1 the most significant results of the numerical simulations are summarized and compared with the reference data. In Section 4.2 we study the influence on the haemodynamics of a hypothetical AD surgical fenestration. Finally, Section 5 collects the main achievements and conclusions of the work and states the future work lines.

All the cases presented in this work are solved using Kratos Multiphysics, an Open Source C++ object oriented Finite Element framework for the resolution of multi-physics problems²,².

2 | FORMULATION

2.1 | Level set based embedded approach

The most distinguishable feature of any embedded (or immersed) approach is the capability to decouple the geometry of the analyzed objects from the problem domain mesh. As opposite to the traditional body conforming (also known as body-fitted) approaches, these kind of formulations do not solve the problem using a discrete representation of the analyzed bodies but using a mathematical representation of them, which is typically achieved by using a level set technique.

The level set method, which was firstly proposed by Osher and Fedkiew in², makes it possible to implicitly describe physical discontinuities occurring in a background mesh. This method has been successfully applied in a vast amount of engineering problems, ranging from the representation of the fluid interface in two-fluid²,² and free-surface² problems to the tracking of crack paths in mechanical ones².

In our case, the level set method is used to represent the flow discontinuity generated by the presence of the IF between the TL and the FL. One of the advantages of this approach is that the model and mesh generation are incredibly simplified. Such simplification comes from the fact that the TL and FL are treated as a unique volume of fluid, disregarding the presence of the intimal flap, which is treated in a completely independent manner during the entire preprocess stage. This makes it possible to set up and test as many IF configurations as needed by only updating the IF geometry, without even remeshing the volume TL and FL domain. This feature is particularly interesting for the decision making before surgery since it makes possible to easily set up new IF configurations to assess their affectation to the blood flow.

The level set approach is also useful to get rid of the mesh update problems when the problem is solved considering the movement of the IF. Unlike in the FSI case, in which the aortic walls movement is a consequence of the fluid flow, in this case the objective is to obtain the fluid flow but considering a known IF movement, which can be easily obtained by using medical imaging techniques. Taking into account the uncertainties associated with the IF thickness and mechanical behaviour, this becomes a feasible robust alternative to the fully coupled FSI simulation of the AD.

Unfortunately, all the previous advantages come at the price of introducing some extra complexities that are not present in the common body-fitted approaches. On the one hand, it is required to use a robust auxiliary algorithm² to compute the level set function in accordance with the IF position. Besides, although the level set a robust and always defined operation, some details of the original geometry (e.g. sharp edges or corners) might be lost when computing its level set approximation.

With regard to the continuity of the level set function, it is possible to distinguish between two types of level set functions depending on the nature of the embedded body. If the geometry to be analyzed has a closed internal volume, a continuous level set function is commonly employed, although it is possible to use a discontinuous one. On the contrary, the bodies without internal volume, such as the IF, can only be represented by a discontinuous level set. This means that in these cases the level set function is computed element-by-element, which implies that the same node can have different sign and values depending on the element considered. A much more detailed discussion about the continuity of the level set can be found in².

Once the embedded body (in this case the IF) is represented by a level set function, it is needed to impose proper boundary conditions over it. According to the nature of such boundary condition imposition, we can roughly divide the unfitted mesh

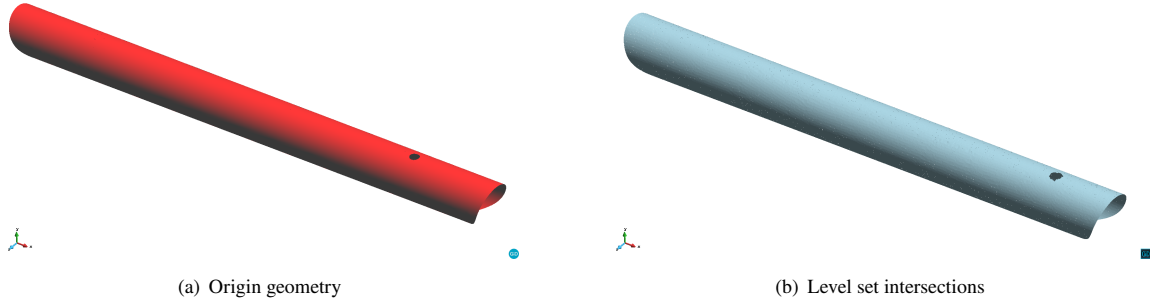


FIGURE 1 Intimal flap level set function representation.

methods in two families: immersed and embedded mesh methods. Since the distinction between these two typologies of methods appears to be blurred in the literature, from now on we will denote as immersed those formulations that use the nodes in the interior of the level set to impose the analyzed body movement. On the contrary, we denote as embedded those formulations that impose the boundary condition by using a variational (weak) technique over the zero iso-surface of the level set. Considering that these works aim to represent the IF as a zero thickness body, it is only possible to impose the boundary condition by using an embedded mesh method. The technique used for such boundary condition imposition is detailed in subsection 2.3.

In the following subsections, we present the governing equations of the fluid dynamics problem as well as the level set boundary condition imposition technique.

2.2 | Governing equations

The governing equations of the fluid dynamics problem are the conservation of linear momentum and the conservation of mass. In an Eulerian reference framework, these equations are

$$\rho \frac{\partial \mathbf{v}}{\partial t} + \rho (\mathbf{v} \cdot \nabla) \mathbf{v} - \nabla \cdot \boldsymbol{\sigma} = \mathbf{f}_{ext} \quad (1a)$$

$$\frac{D\rho}{Dt} + \rho \nabla \cdot \mathbf{v} = 0 \quad (1b)$$

where \mathbf{v} is the velocity, \mathbf{f}_{ext} is an external volume force (e.g. gravity) and ρ is the density. $\boldsymbol{\sigma}$ denote the Cauchy stress tensor which is computed as $\boldsymbol{\sigma} = -p\mathbf{I} + \mathbb{C} : \nabla^s \mathbf{v}$, where p is the pressure, ∇^s the symmetric gradient operator and \mathbb{C} the constitutive tensor describing the viscous (shear) behaviour.

Taking into account that the perfusion liquid used in the *in vitro* experiments reproduced in this work has similar properties to the water ones, we decided to model it as a viscous Newtonian fluid. Hence, the viscous constitutive tensor \mathbb{C} in Eq. 1a can be substituted by the Newtonian one. The Newtonian constitutive tensor only depends on the dynamic viscosity μ and can be expressed in Voigt notation as the 2nd-order tensor

$$\mathbb{C} = \begin{bmatrix} \frac{4\mu}{3} & -\frac{2\mu}{3} & -\frac{2\mu}{3} & 0 & 0 & 0 \\ -\frac{2\mu}{3} & \frac{4\mu}{3} & -\frac{2\mu}{3} & 0 & 0 & 0 \\ -\frac{2\mu}{3} & -\frac{2\mu}{3} & \frac{4\mu}{3} & 0 & 0 & 0 \\ 0 & 0 & 0 & \mu & 0 & 0 \\ 0 & 0 & 0 & 0 & \mu & 0 \\ 0 & 0 & 0 & 0 & 0 & \mu \end{bmatrix} \quad (2)$$

By substituting the previous definition of $\boldsymbol{\sigma}$ into the linear momentum conservation equation (Eq. 1a) yields the well-known viscous Navier-Stokes equations

$$\rho \frac{\partial \mathbf{v}}{\partial t} + \rho (\mathbf{v} \cdot \nabla) \mathbf{v} - \nabla \cdot (\mathbb{C} : \nabla^s \mathbf{v}) + \nabla p = \mathbf{f}_{ext} \quad (3a)$$

$$\frac{D\rho}{Dt} + \rho \nabla \cdot \mathbf{v} = 0 \quad (3b)$$

For purely incompressible fluids, it is commonly assumed that the density time derivative $D\rho/Dt$ in Eq. 1b is zero, leading to the conventional viscous incompressible Navier-Stokes equation. This assumption is however not taken into account in here. Instead we consider the simplified state equation $p = \rho c^2$, leading to the so called viscous pseudo-compressible Navier-Stokes equations. This simplified equation of state relates the pressure with the density through the fluid speed of sound c . The purpose of adding this pseudo-compressibility is to tackle those cases in which isolated fluid cavities with no Neumann boundary condition appear. The apparition of such ill-defined cavities is commonly related either to dirty input skin geometries or to the movement of the embedded skin. If we further assume that the density fluctuations are negligible, the final form of the governing equations reads

$$\rho \frac{\partial \mathbf{v}}{\partial t} + \rho (\mathbf{v} \cdot \nabla) \mathbf{v} - \nabla \cdot (\mathbb{C} : \nabla^s \mathbf{v}) + \nabla p = \mathbf{f}_{ext} \quad (4a)$$

$$\frac{1}{\rho c^2} \frac{\partial p}{\partial t} + \nabla \cdot \mathbf{v} = 0 \quad (4b)$$

In all the cases presented in this work we set the speed of sound c to 10^{12} m/s. This implies that the term $1/\rho c$ in in Eq. 4b is reduced beyond the machine precision (10^{-16}), recovering thus the fully incompressible form of the Navier-Stokes equations. This is intentionally done since no isolated fluid cavities are expected due to the simplicity and steady nature of the level set function that represents the IF. However, it is due mentioning that this term might play an important role as soon as the problem is extended to consider the movement of the IF.

2.3 | Modified Finite Element formulation and embedded imposition

Once the immersed body (IF) is represented by the level set function, proper boundary conditions need to be imposed over it. To that purpose, we rely on the use of a modified Finite Element (FE) space together with a Nitsche based general Navier imposition.

On the one hand, we substitute the standard FE space by an alternative discontinuous one in those elements intersected by the level set. Such alternative space (henceforth named Ausas FE space after the name of the original author) was firstly proposed in[?]. The main feature of the Ausas FE space is the capability to represent discontinuities inside an element. This makes it possible to capture the velocity and pressure fields discontinuities that arise between the TL and the FL due to the presence of the IF. Unfortunately, such capability comes at the price of having worse interpolation properties than the common FE space. Despite this limitation, the capability of the Ausas FE space to solve viscous incompressible fluid problems, ranging from the low to the high Reynolds (Re) scenario, is proved in[?].

On the other hand, a Robin type general Navier condition (Eq. 5) is imposed over the level set intersections by using a Nitsche based technique as it is described in[?]. The general Navier condition is composed by a Dirichlet no penetration condition in the normal direction to the level set zero isosurface (Eq. 5a) and a Robin condition to impose a shear force in the tangential direction to the level set zero isosurface (Eq. 5b). The normal and tangential contributions of the general Navier condition can be split in two equations as

$$(\mathbf{v} - \bar{\mathbf{v}}) \mathbf{P}^n = \mathbf{0} \quad (5a)$$

$$(\varepsilon ([\mathbb{C} : (\nabla^s \mathbf{v})] \cdot \mathbf{n} - \mathbf{h}) + \mu (\mathbf{v} - \bar{\mathbf{v}})) \mathbf{P}^t = \mathbf{0} \quad (5b)$$

where $\bar{\mathbf{v}}$ is the immersed body (IF) velocity, \mathbf{n} is the unit normal vector to the level set and \mathbf{h} an imposed shear traction. \mathbf{P}^n and \mathbf{P}^t are the normal and tangential projection operators obtained as $\mathbf{P}^n = \mathbf{n} \otimes \mathbf{n}$ and $\mathbf{P}^t = \mathbf{I} - \mathbf{n} \otimes \mathbf{n}$. ε is the so called slip length, which regulates the tangential behaviour of the boundary condition. Therefore, the general Navier condition behaves as a slip condition (no tangential velocity constraint) as $\varepsilon \rightarrow \infty$ while it approximates to a stick condition (null tangential velocity) as $\varepsilon \rightarrow 0$.

More details on the implementation, convergence and stability analysis of the general Navier condition and the Nitsche constraint can be found in[?].

3 | EXPERIMENT: AORTIC DISSECTION MODEL

3.1 | Geometry

As one of the main objectives of this work is to reproduce the *in vitro* experiments in[?], the phantom models used in this work are taken as reference geometry for the present study. Far from being patient-specific AD cases, these phantom models consist

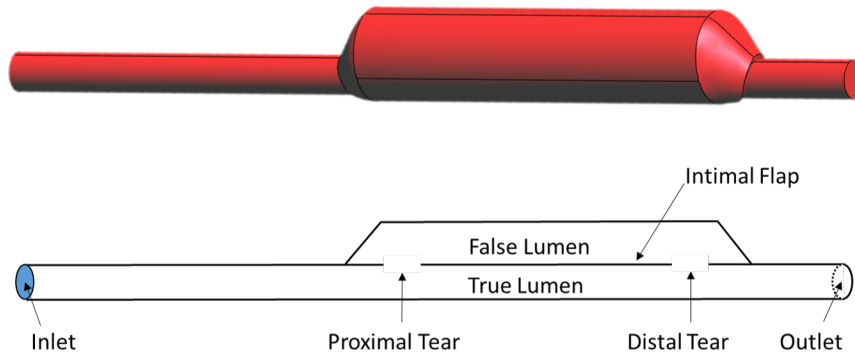


FIGURE 2 3D Geometry Model of the type B Aortic Dissection and longitudinal cross sectional plane. The diameter of the tube representing the TL is 16 mm while its length is 390 mm. On the other hand, the diameter of the tube representing the FL is 37 mm. The dissection length is 160 mm and it is set up by aligning the inferior parts of the TL and FL tubes. The proximal and distal tears were simulated by creating two holes, which diameters range from 0 to 10 mm, in the FL tube. The center of the proximal and distal tears are 177.5 mm and 322.5 mm from the inlet.

in a simplified geometry made of silicon and latex connected to a closed circuit that pumped water into it to emulate the AD blood flow. The geometry of these AD phantom models is simplified to two straight and constant diameter tubes (the aortic arch is not taken into account) whose thickness is assumed to be infinitesimal. The IF is also considered to be an infinitesimal thin wall (Fig. 2 and Fig. 3). The two straight tubes axes are aligned with the X-axis of the global coordinates system, whose origin is located in the center of the inlet face.

As was originally done in², we distinguish the different study cases according to the proximal and distal tears diameter. Table 1 collects each one of the study cases together with their the proximal and distal tears diameter. Henceforth we will refer to the cases as Case *proximal tear diameter - distal tear diameter* (e.g. Case 0-4 stands for no proximal tear and 4 mm distal tear diameter).

It is worth mentioning that thanks to the embedded approach used in this work the geometry and the mesh generation are significantly simplified compared with the common body-fitted approach. The key advantage is that a unique volume mesh needs to be generated for all the cases to be studied. This volume mesh is built from the outer skin, which at the same time is conformed by the aggregation of the inlet and outlet tubes skin together with the enlarged tube one representing the FL. Once the volume mesh is generated, each simulation case can be defined by simply dropping the surface mesh representing its IF into the volume mesh and computing its level set function, which is obtained from the intersections between the AD volume mesh and IF surface one.

We would like to stress again the potential of the presented method to be exploited when multiple IF configurations need to be efficiently tested (e.g. decision making before surgery). We also highlight that the complex preprocess operations commonly associated with the CFD simulation of volumeless geometries (e.g. edge and surface duplication) are completely avoided as the volume mesh is meshed with no regard of the immersed volumeless structures.

3.2 | Material properties

The perfusion liquid used in the original *in vitro* experiments is water at room temperature, which is less viscous than blood. According to the original authors, no noticeable differences in the velocity values can be observed if they are compared with the ones obtained by using a glycerin-water solution, whose viscosity and density are similar to blood ones². Taking this into consideration, we decided to set the fluid material properties to be similar to the blood ones. Therefore, the density is set to 1050 kg/m³ while the dynamic viscosity is set to $3.5 \cdot 10^{-3}$ kg/ms.

3.3 | Boundary conditions

The boundary conditions are selected to emulate each one of the reference *in vitro* experiments in², meaning that each AD scenario has its own velocity and pressure waveform. On the one hand, the fluid flow generated by the pumping system of the

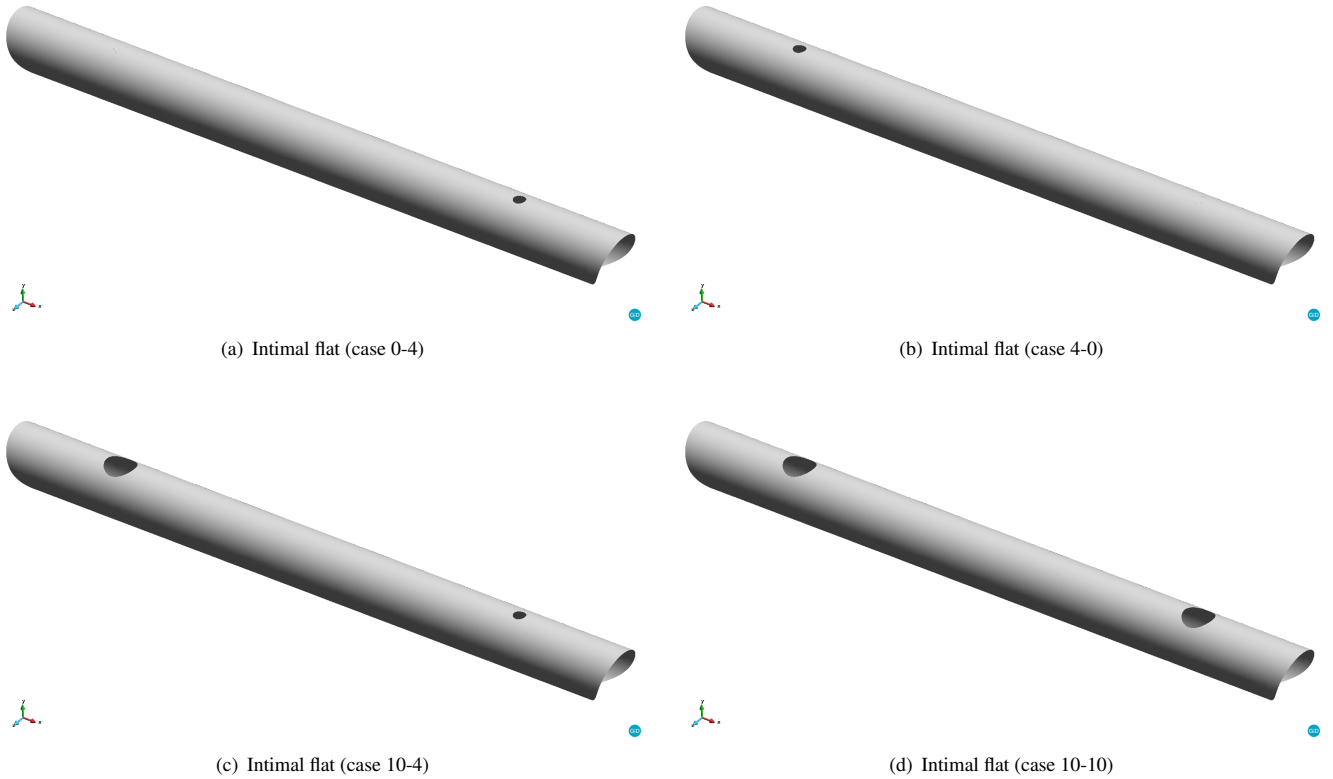


FIGURE 3 Intimal flat geometries for the four validation cases studied. These are the input geometries for the computation of the level set function used in the resolution of the embedded CFD problems.

in vitro experiments is reproduced by setting the inlet velocity function $v_M(t)$. On the other hand, the outlet pressure waveform $p_M(t)$ is taken directly from experiments measurements and imposed in the outlet region. Both inlet velocity function and outlet pressure waveform are directly extracted from the reference *in vitro* experiments datasets.

The above mentioned inlet velocity function v_M is applied to the inlet surface as a parabolic profile in such a way that the reference *in vitro* experiments flow rate is kept. Thus, the velocity in each one of the inlet nodes can be computed as

$$\mathbf{v}^{in}(r, t) = 2.0v_M(t) \left(1 - \frac{r}{R}\right)^2 \mathbf{n}_{in} \quad (6)$$

where r denotes the in-plane distance from the inlet center point to the considered inlet node, R the radius of the inlet surface, whose value is 0.008 m , and \mathbf{n}_{in} the vector normal to the inlet surface pointing in the inward direction.

The outlet pressure is fixed to the $p_M(t)$ waveform values. To fulfill the force equilibrium in the outlet region it is also required to set the external traction that corresponds to the $p_M(t)$ values. This can be computed as $\mathbf{t} = p_M(t)\mathbf{n}$.

We consider that the rest of boundary surfaces that conform the AD computational volume have a stick (no-slip) behavior, something that turns into a null velocity constraint. The same no-slip behaviour is assumed in the embedded IF. Therefore, the slip length (ϵ) in Eq. 5b set to 0 in all the cases.

3.4 | Simulation settings

The problem is discretized in time using a second order Backward Differentiation Formula (BDF2). The available data sets in² comprehend a period of 0.88 s , which is enough to represent a normal haemodynamic cycle of the human aorta: the peak pressure (reached at 0.25 s) and a biphasic diastolic period. Based on this, we set the total simulation time to 0.8 s , which is also enough to represent all the aortic cycle features, and the time step of $2.5 \cdot 10^{-3} \text{ s}$.

The use of the BDF2 formula results in an implicit time discretization, which preferred because of its well-known stability properties. However, such enhanced stability comes at the price of requiring to solve a non-linear system of equations at each

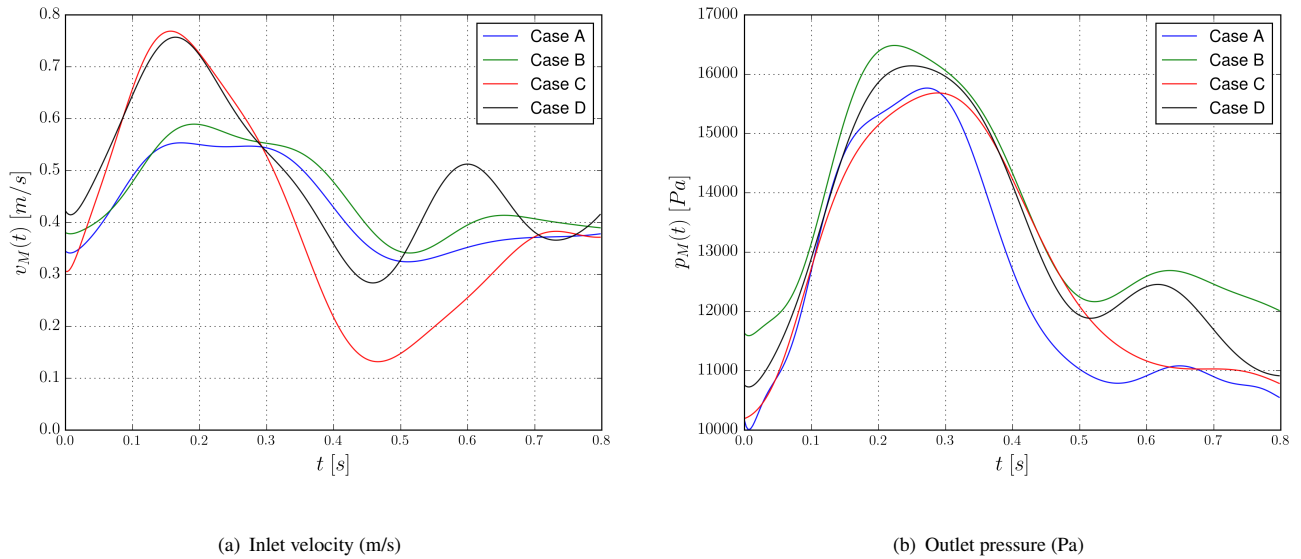


FIGURE 4 Inlet velocity and outlet pressure waveform used in the four AD validation cases. On the left side the inlet velocity time evolution is shown. On the right one the outlet pressure time evolution is shown. These data have been extracted from reference *in vitro* experiments in².

Case	Case Id.	Proximal tear		Distal tear	
		Diameter (mm)	Coordinates (mm)	Diameter (mm)	Coordinates (mm)
Case 4-0	A	4	(177.5,9,0,0.0)	0	(no tear)
Case 0-4	B	0	(no tear)	4	(320.5,9,0,0.0)
Case 10-4	C	10	(177.5,9,0,0.0)	4	(320.5,9,0,0.0)
Case 10-10	D	10	(177.5,9,0,0.0)	10	(320.5,9,0,0.0)

TABLE 1 Cases studied.

time step. This is achieved by using a Newton-Raphson strategy, with linearised convective velocity, in combination with a mixed pressure and velocity convergence criterion. The relative and absolute tolerances are 10^{-4} and 10^{-6} for both the pressure and velocity residuals.

As it is highlighted above, one of the remarkable features of the presented approach is that the same background mesh is always used with no regard of the analyzed IF configuration. Therefore, a unique volume mesh conformed by approximately 7M linear tetrahedrons is used in all the presented cases. All the simulations are run in our internal High Performance Computing (HPC) facilities (Acuario cluster) using a parallel distributed memory environment (MPI parallelism). For all the cases we take 4 nodes with 16 Intel Xeon E5-2670 processors and 64 GB of memory. This amounts a total of 64 processors and 256 GB of memory. The elapsed wall clock time in all cases is less than 12 hours.

4 | RESULTS

4.1 | Validation

This section presents the results of the AD scenarios described in the previous section. In all the cases we compare the results obtained by using the presented embedded approach with the results obtained from the reference *in vitro* experiments in². The

	Proximal tear		Distal tear	
	True lumen	False lumen	True lumen	False lumen)
Coordinates (mm)	(177.5,0.0,0.0)	(177.5,17.5,0.0)	(320.5,0.0,0.0)	(320.5,17.5,0.0)

TABLE 2 Control points coordinates.

AD cases with a single tear (case 4-0 and case 0-4) are also validated with the CFD simulation results in². The results validation mainly consists in comparing the pressure time evolution in the four control points stated in² and². The coordinates of these pressure measurement points are collected in Table 2.

4.1.1 | 1 tear cases

For assessing the effect of the tears number upon the fluid flow next we consider a configuration with a unique tear: Case 4-0 (A) and Case 0-4 (B). In both cases the proximal or distal tear has a diameter of 4 mm. The inlet and outlet boundary conditions are identical to the ones used in the *in vitro* experiments (Fig.4). Before any further discussion, it is interesting to remark that the *in vitro* pressure measurements were done using retrograde catheterization. This could have induced a partial obstruction of the tears, reducing thus their effective diameter, something that could have altered FL pressure measurements (especially in the small tear cases). Furthermore, it is important to mention that in these particular cases, the experimental data measurements in the FL region appear to have been incorrectly taken (Fig.3 (b) and Fig.3 (a)). Taking this into consideration, we decided to also use the numerical results in² to properly validate these AD scenarios.

Fig.5 shows the pressure evolution at the reference points for case 4-0. Fig. 7 presents the same results for case 0-4. As it can be observed, pressures at the TL (proximal and distal locations) are nearly identical in both cases. For both case 4-0 and case 0-4, a similar pressure waveform can be observed. However, the peak pressure reported in² is higher than the result obtained in this work. Considering that the presented results better fit the experimental ones, we believe that these differences are associated with the different discretization levels (1,5 M elements vs 7 M) as well as to the IF geometry modeling. Moreover, in this work the IF is considered to have an infinitesimal thickness, while in² the thickness is 2 mm.

It is also interesting to remark that single-tear models show near zero FL flow (Fig.6 and Fig.8). In both cases, there is only a small jet entering into the FL, while a slightly wider jet in the opposite direction enters into the TL during the peak systole. At peak diastole, it can be observed that the flow behaves in the opposite manner. In these cases, we observe large velocity decreases in the FL, leading to an negligible flow rate. This low fluid velocity in the FL favors the thrombus formation in single tear AD as it is observed in the daily clinical routines.

4.1.2 | 2 tears cases

In this section, we analyze the double (proximal and distal) tear configuration scenarios: Case 10-4 (C) and Case 10-10 (D). Case 10-4 involves a proximal tear of 10 mm and a distal tear of 4 mm while Case 10-10 involves two tears of equal diameter (10 mm). The inlet and outlet boundary conditions are identical to the ones used in the reference *in vitro* experiments (Fig.4).

Again, we compare the waveform and values of the pressure recorded in the different control points with the *in vitro* experiments reference ones (Fig. 9 and Fig. 11). With regard to the pressure waveforms, barely differences can be observed between the numerical and experimental approaches. Concerning the pressure values, specially the systolic peak ones, the TL and FL obtained values are apparently equal to the reference ones in the Case 10-10. However, it can be observed that the TL and FL systolic peak values in the Case 10-4 are slightly lower than the ones reported in², being the maximum error around the 5% (FL proximal tear control point). These differences are possibly associated with the fact that our model considers the IF as a rigid body while it was flexible in the original *in vitro* experiments. A similar trend in the results can be also observed in² and².

The equal pressure evolution in the control points proves that the presence of a distal tear prevents large pressure gradients between FL and TL to occur. We also observe that large distal tears increase the pressure in the FL, leading to a diminution in the pressure gradient within the AD. It is also interesting to comment that the presence of two tears in the IF yields a flow recirculation in the FL, which is around a 20% higher in the Case 10-10 if we compare to the small distal tear Case 10-4. Therefore, during the systole phase, the flow enters from the TL to the FL through the proximal tear while it leaves the AD through the distal

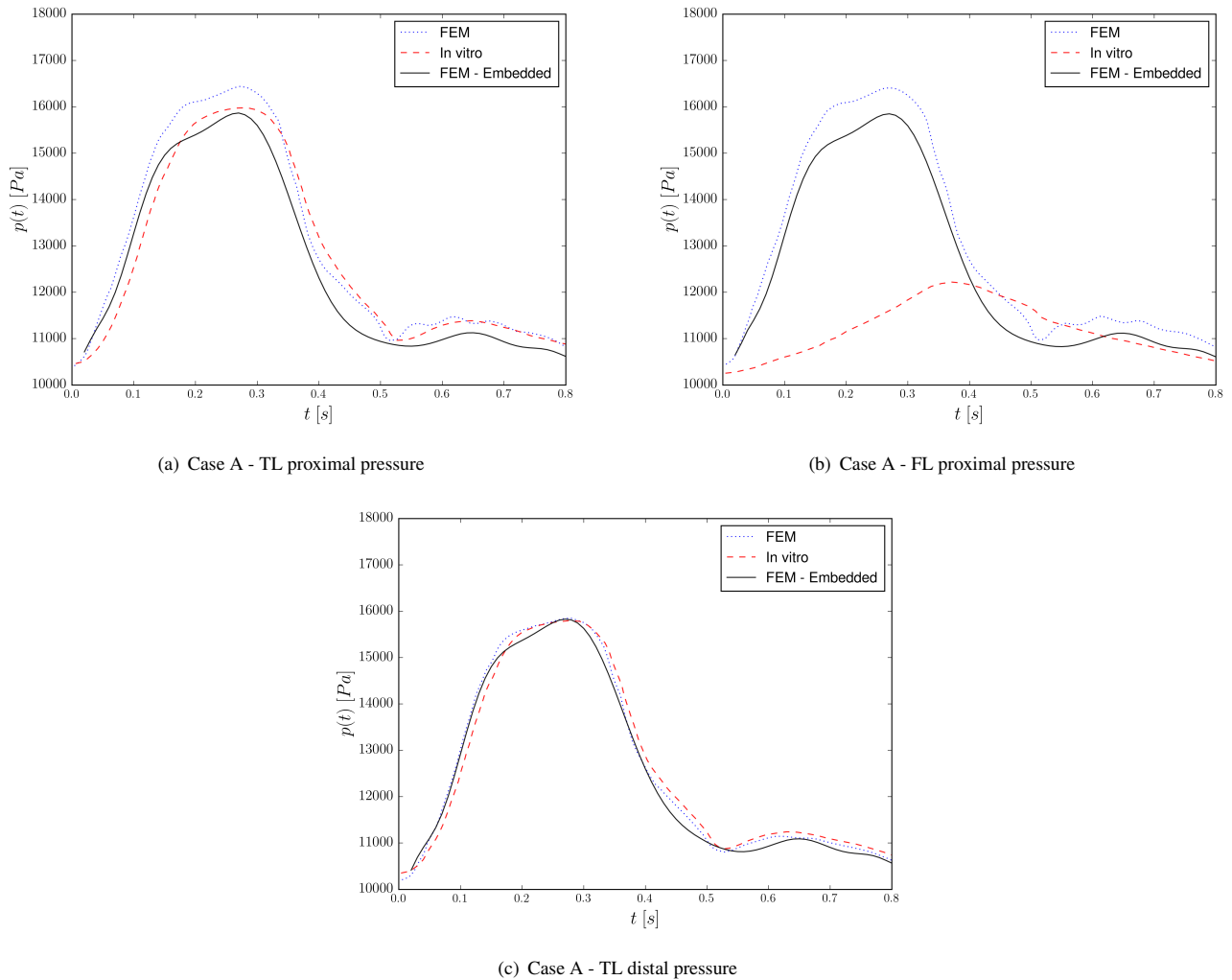


FIGURE 5 Case A. Pressure evolution at various locations. Comparison with the results in² and²

one. Conversely, the opposite behaviour occurs during the diastole phase. A natural consequence of such recirculation is that the flow in the FL becomes more chaotic, leading thus to the generation of some observable vorticity effects. Such increment in the vorticity is known to increase the wall shear stress, which is directly related to the redissection, or even rupture, risk.

4.2 | Surgical application: re-entry tear aortic fenestration

In this section we want to show the capability of the presented methodology to easily generate new computational models to study the AD surgical fenestration technique. Surgical aortic fenestration represents an effective alternative for the treatment of ischemic complications of the AD, particularly in those patients with no aortic dilatation. This surgical procedure is less invasive than the Thoracic EndoVascular Aortic Repair (TEVAR)² as it only requires a puncture of the IF from the TL to the FL using a needle. This technique corrects the malperfusion at the suprarenal or infrarenal levels by creating a single aortic lumen intended to restore the organ flow. The aortic fenestration is also used to decompress the hypertensive FL thanks to the creation of the new re-entry tear in the distal part of the IF^{2, 2}. Considering that the mortality rate of patients without fenestration is higher than the one in patients with exit or re-entry tears², evinces the importance of having non-invasive tools to *a priori* assess the consequences of the surgical fenestration before the clinical intervention.

We took case A as application case. Starting from the original IF geometry, we generate an artificial re-entry tear in the midpoint of the IF top line (Table 3) to assess the affectation of the surgical fenestration to the velocity and pressure fields.

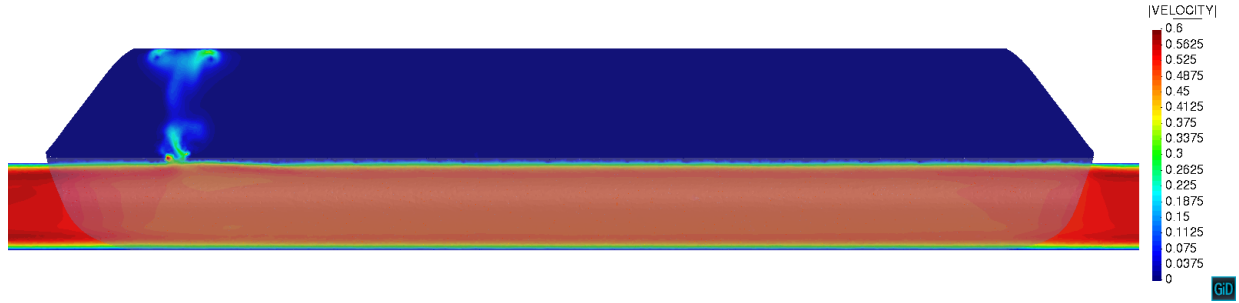


FIGURE 6 Case A. Velocity cross section at $t = 0.09$ s. IF level set representation shadowed over the cross section.

4.2.1 | Embedded re-entry tear generation

First of all, it is important to highlight that the creation of the new re-entry tear is automatically done without any geometrical operation. The methodology implemented to create the new re-tear is described in algorithm 1. This algorithm only requires the user to introduce the radius (r_{fen}) and center ($\mathbf{x}_{c, fen}$) of the new re-entry tear. After the definition of these magnitudes, the routine flags the IF skin elements lying inside the fenestration radius. Once the marked elements are identified, they are deactivated to recompute the level set function with this new modified skin mesh. We would like to highlight again the simplicity of the methodology from the end-user perspective, as it avoids any preprocessing operation (including remeshing) thanks to the capabilities of the embedded approach. Besides, the presented approach has no limitation in the number of re-entry tears, so could be possible to consider more than one.

ALGORITHM 1

Algorithm to place a fenestration tear in the intimal flap mesh.

```

 $r_{fen}$                                 ▷ Fenestration radius
 $\mathbf{x}_{c, fen}$                           ▷ Fenestration center point
fluid_mesh                               ▷ Fluid mesh container
if_skin_mesh                             ▷ Intimal flap mesh container

for if_skin_mesh.Elements() do
   $\mathbf{x}_{c, elem} = \text{if\_element.Center}()$            ▷ Intimal flap element center
   $dist = \|\mathbf{x}_{c, fen} - \mathbf{x}_{c, elem}\|$            ▷ Distance from  $\mathbf{x}_{c, fen}$  to  $\mathbf{x}_{c, elem}$ 
  if  $dist \leq r_{fen}$  then                             ▷ Check if the current entity belongs to the fenestration
    if_element.Set(TO_ERASE)
  end if
end for

if_skin.RemoveElements(TO_ERASE)           ▷ Remove the selected intimal flap entities
CalculateDiscontinuousDistance(fluid_mesh, if_skin_mesh) ▷ Calculate the level set to the intimal flap mesh

```

Case	Case Id.	Proximal tear	Mid tear(s)	Distal tear
Case 4-10-0	A_F	(177.5,9.0,0.0)	(249.0,9.0,0.0)	(no tear)

TABLE 3 Fenestration cases studied.

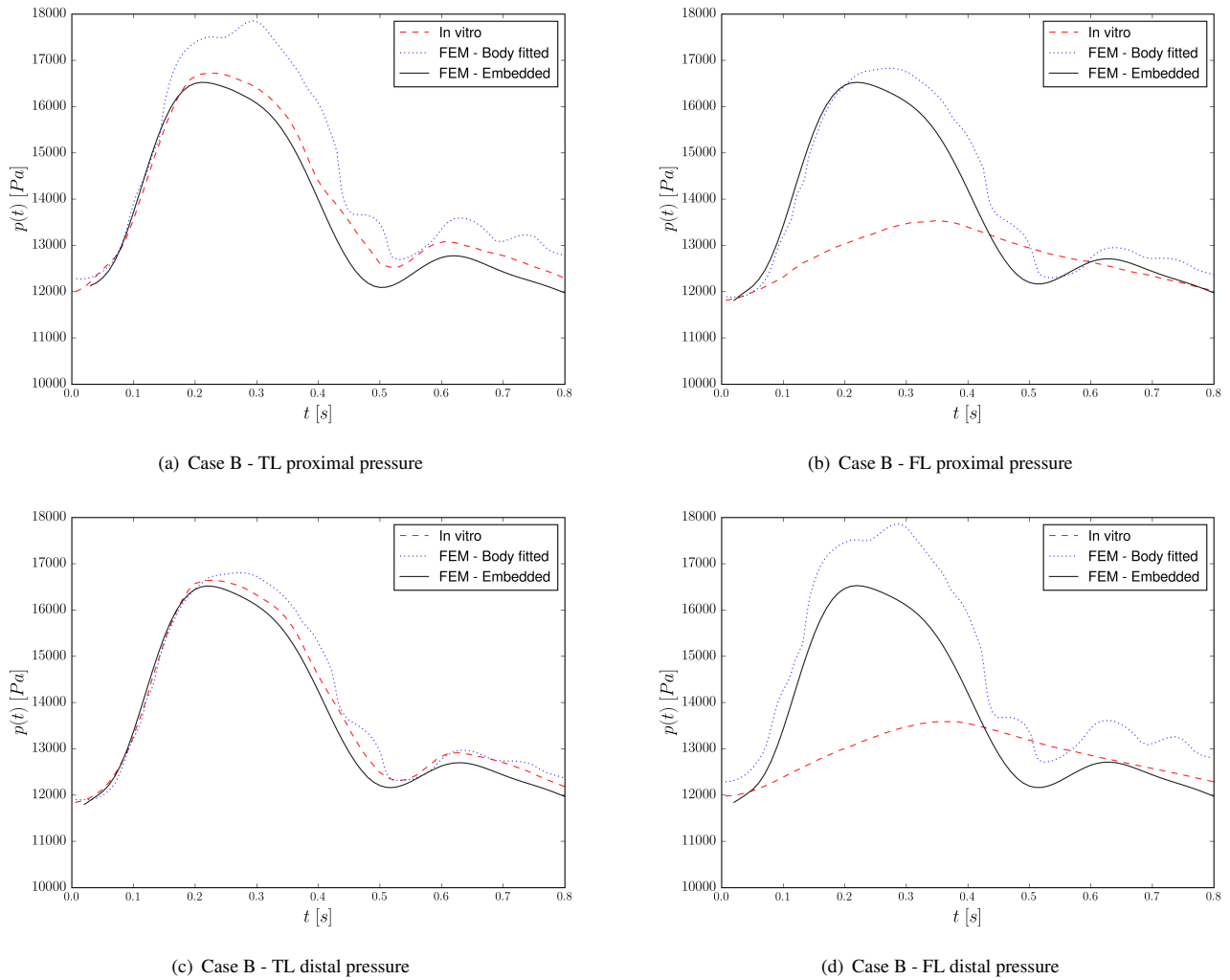


FIGURE 7 Case B. Pressure evolution at various locations. Comparison with the results in ² and ³

4.2.2 | Embedded surgical fenestration results

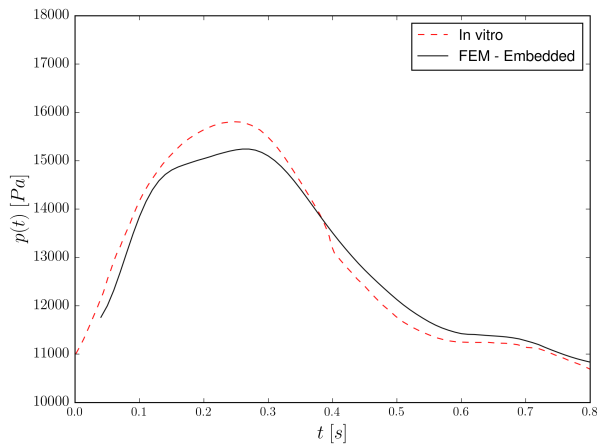
Figure 13 compares the results obtained after the surgical fenestration (case A_F) with the original ones with no fenestration (case A). Prior to any assessment, it is due mentioning that in this case the results are not presented for the absolute pressure but for the pressure drop of the control points. Since we assume identical outlet pressure values in both cases (with and without fenestration), the pressure drop is computed as the pressure difference between the control points and the outlet.

Table 4 shows the maximum pressure differences at the proximal, mid (new re-entry tear) and distal points for case A and A_F . Even though the surgical fenestration seems to barely affect the TL pressure evolution, Fig. 13 clearly shows that the surgical fenestration reduces the systole and diastole pressure peak values in the FL (difference between the TL and FL pressure values) (Fig. 14). Figure 14 also proves the pressure difference between the TL and FL is almost negligible in the midpoint. Moreover, the pressure difference between the TL and FL decreases 120 Pa in the distal region of the AD. These results are in line with the medical protocols, which have traditionally promoted the use of surgical fenestration in one tear scenarios.

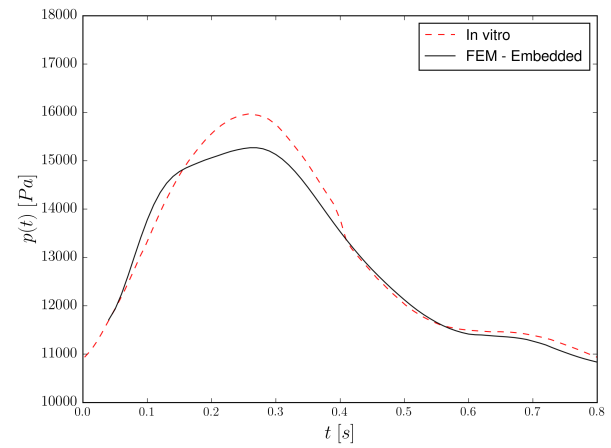
However, the creation of the distal re-entry tear increases the flow rate in the FL (Fig.15 (c)). This artificially generated flow pattern complicates the generation of the thrombus in the AD. We also observe that the pressure difference grows in the proximal region. This is possibly due to the fact that the flow between the TL and FL increases, with the consequent increase in the energy local losses of the proximal tear. Clinical findings increasingly suggest, that patients with a partially thrombosed FL are at a



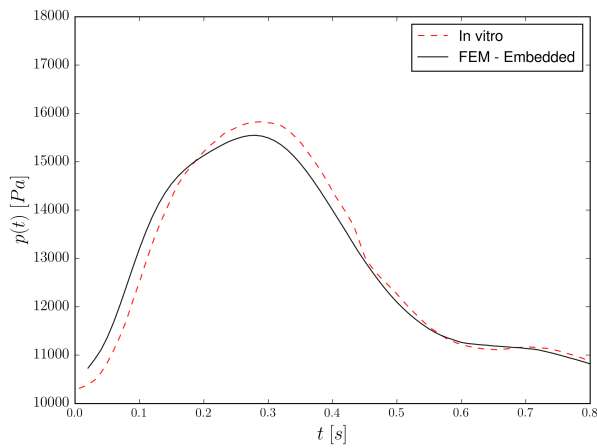
FIGURE 8 Case B. Velocity cross section at $t = 0.03$ s. IF level set representation shadowed over the cross section.



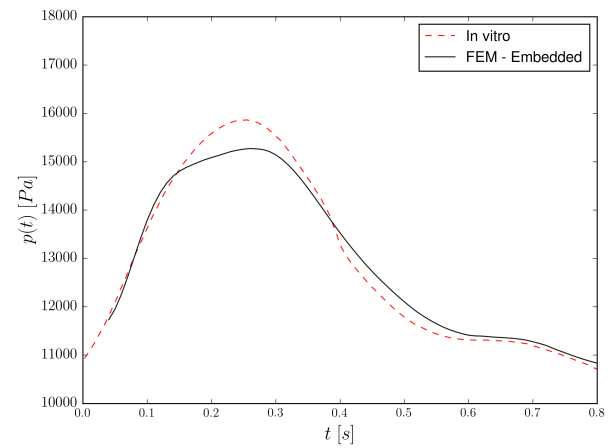
(a) Case C - TL proximal pressure



(b) Case C - FL proximal pressure



(c) Case C - TL distal pressure



(d) Case C - FL distal pressure

FIGURE 9 Case C. Pressure evolution at various locations. Comparison with the results in².

higher risk of rupture². Conversely, completely thrombosed FL have a better prognosis². Indeed, it has been suggested that “complete thrombosis of the residual FL might be a sign of aortic wall healing and remodeling”². Therefore, we can conclude that the FL artificial flow pattern generated after the aortic fenestration is directly related with the thrombosis of FL².

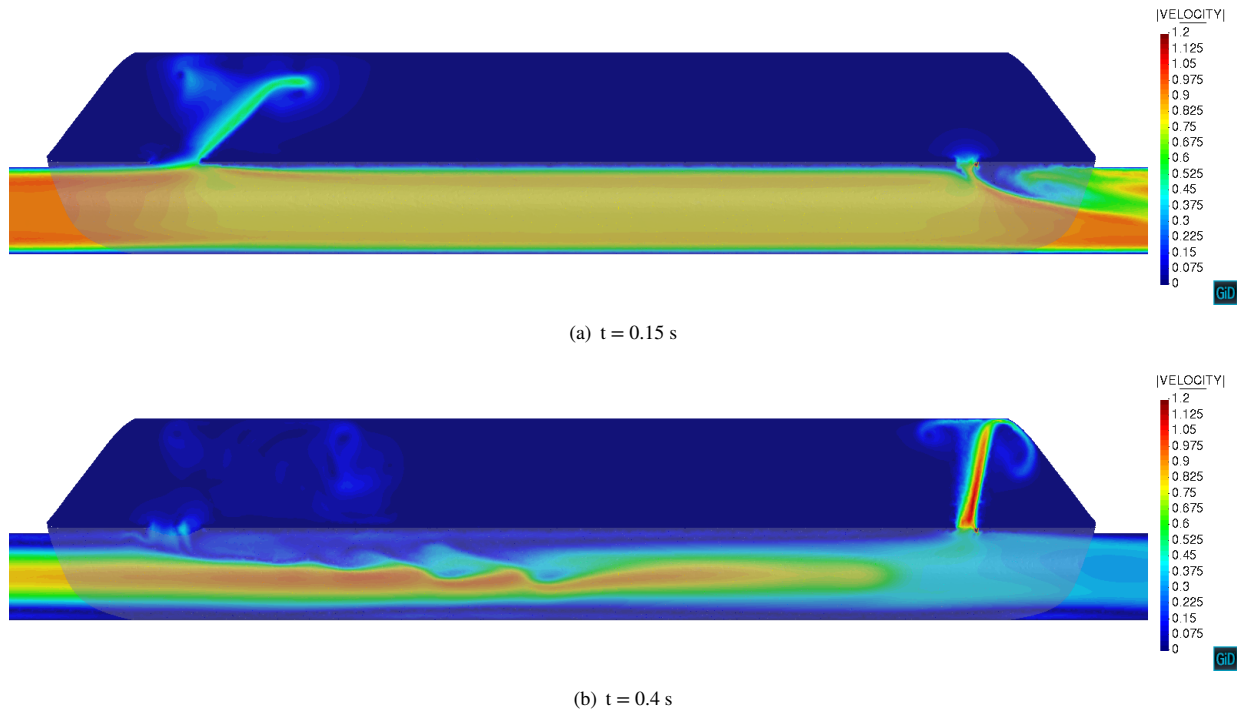


FIGURE 10 Case C. Velocity cross section at different time steps. IF level set representation shadowed over the cross section.

Case	Pressure Difference ($P_{TL} - P_{FL}$)		
	Proximal (Pa)	Mid (Pa)	Distal (Pa)
Case 4-0	41.246	152.021	-332.684
Case 4-10-0	167.937	23.774	-209.312

TABLE 4 Pressure difference between TL and FL control points. Positive values means higher pressure in TL, whereas a negative value means higher pressure in FL.

5 | CONCLUSION

In this work, we propose a new numerical FE based embedded technique to study the fluid flow in biomedical applications, in particular to AD scenarios. The FE embedded technique is developed and implemented by the authors in the Kratos Multiphysics framework[?]. The presented method is validated by reproducing the *in vitro* experiment described in[?]. After the successful validation, and with the objective of showing the advantages of the the proposed approach, we reproduced a surgical fenestration technique. The presented embedded technique makes it possible to easily modify the IF geometry without the necessity of modifying the volume mesh (remeshing is avoided).

It is known that pressure differences between TL and FL may indicate conditions of AD growth[?]. Taking this into consideration, the validation is based on measuring the pressures in a set of control points in the TL and FL. After solving multiple cases, we dare say that the presented methodology is capable to reliably represent the fluid flow inside an AD. We also notice that the maximum pressure peaks occur for the single tear cases. This leads us to consider the introduction of a new re-entry tear in the IF, mimicking a surgical fenestration intervention. Such new tear introduction yields a diminution in the TL and FL pressure difference as shown in Fig. 14 . The comparison between the two tear cases (C and D) shows that a small distal tear reduces the pressure difference. On the contrary, large distal tears result in negligible pressure difference between the TL and FL. This observation confirms that a small tear size yields an insufficient reduction in the FL pressure. These results are in line with the conclusions in[?], which state that the pressure difference between the TL and the FL is inversely proportional to the

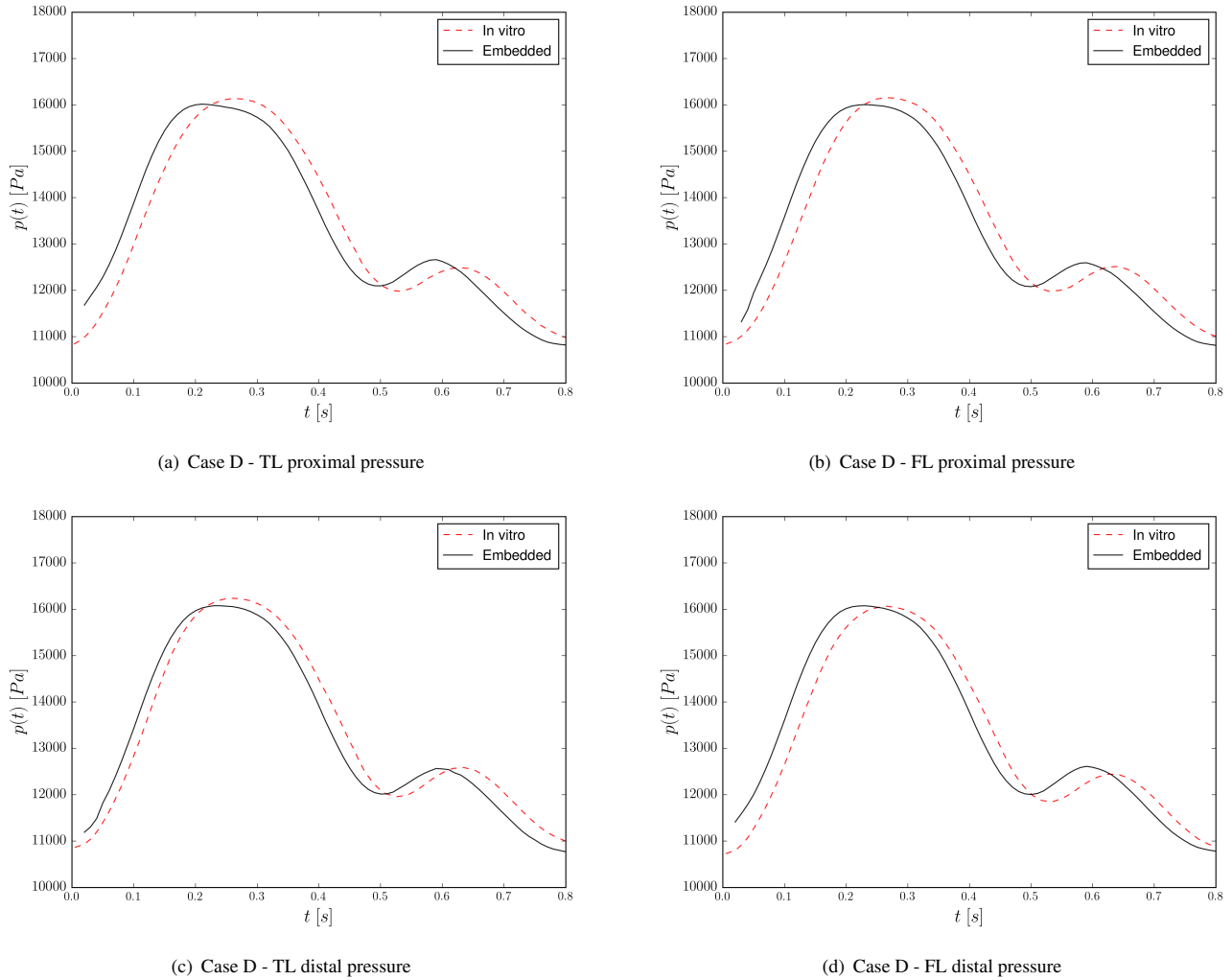


FIGURE 11 Case D. Pressure evolution at various locations. Comparison with the results in [?].

cross-sectional area of the exit tear. It can be also observed that the tear jet becomes relevant only in those cases involving two tears (Fig. 10 and Fig. 12). These fluid jets affect the FL wall and could eventually generate a high wall stress. Furthermore, these cases also show that a small distal tear induces a reduced jet impact in the proximal region of the FL (Fig. 10). A detailed analysis of the flow through the tears reveals that the jets are typically shifted in the direction of the flow (downstream).

We would also like to highlight that all the AD cases have been solved with a unique volume mesh. This is thanks to the capability of the method to represent the IF by using a discontinuous level set function. Note that the level set movement could eventually be considered by simply updating the level set function. This feature becomes crucial for the application of the presented approach in the biomedical field since it would make it possible to solve a FSI problem without any knowledge of the mechanical properties of the tissue, whether it is healthy or not^{?,?}. In this particular case, the movement of the IF can be obtained using 4D PC-MRI techniques^{?,?,?}. 4D-PC-MRI techniques can provide the characteristic features of the flow in the entire aortic volume for any specific time window[?]. For each time frame, the displacement of the IF could be recorded and used as a boundary condition in our method. As a second step, the mechanical properties of the IF could be eventually estimated by performing an inverse analysis after computing the pressure distribution in the TL and FL. Although the presented approach is already prepared to be used in combination with any imposed movement of the IF, there are still some complexities to be tackled. These are mainly related with the input data acquirement. Handling these data could be also a issue as it is required to do, store and manage the IF segmentation, together with the tear(s) location.

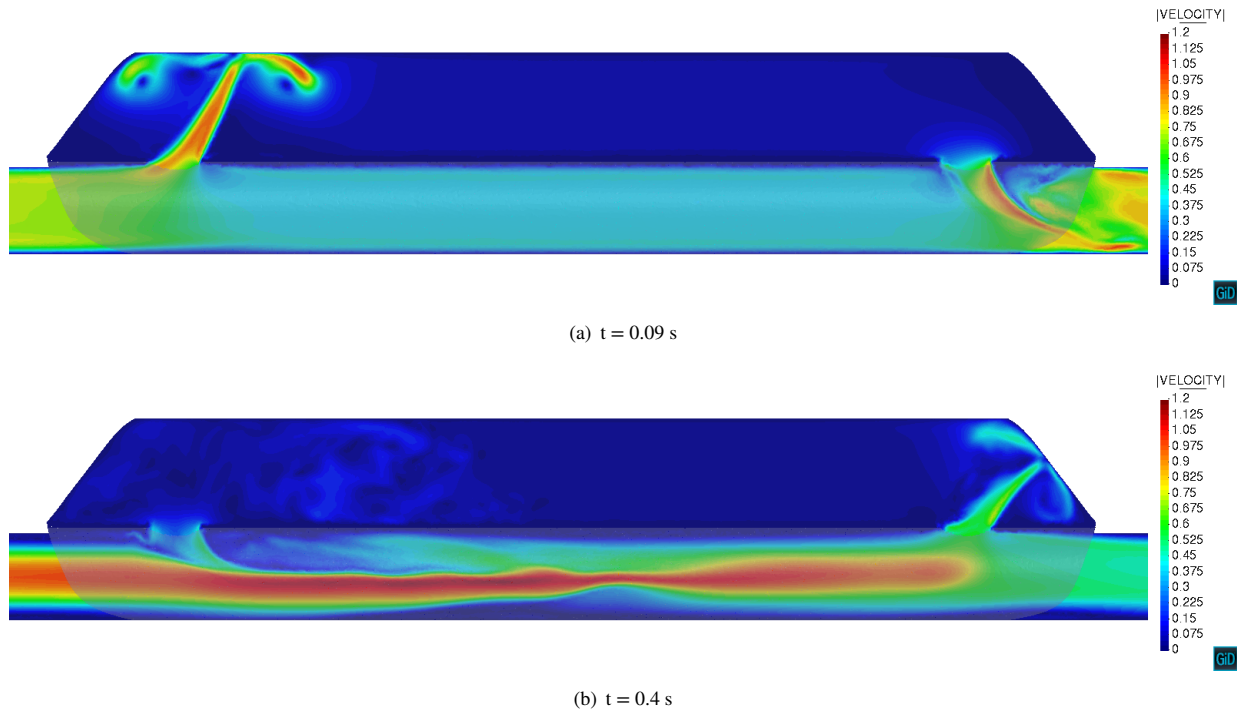


FIGURE 12 Case D. Velocity cross section at different time steps. IF level set representation shadowed over the cross section.

The capability of the model to easily create artificial tears is also proved. Then, it could be possible to use the presented technique to efficiently study the flow pattern in AD patients after stent-grafting repair. The location of the stent-graft into the AD volume can be described by a level set function to study the new flow pattern distribution.

Finally we would like to remark that this work is conceived as a preliminary validation and proof of concept of a new research line that aims to exploit the capabilities of fixed mesh methods in the framework of biomedical applications. In the short term, we plan to apply our methodology to study patient-specific data coming from 4D-PC-MRI and to extend it to consider the movement of the IF.

ACKNOWLEDGMENTS

This research has been partly supported by the European Commission (EC) through the project ExaQUte (H2020-FETHPC-2016-2017-800898). Rubén Zorrilla gratefully acknowledges the support of the Spanish Government for his FPU grant (FPU15/03796).

Finally, the authors want to express their gratitude to Dr. Antonio J. Barros for his fruitful discussion about AD, Dr. Paula A. Rudenick and Dr. Bart H. Bijnens for providing the experimental data of the *in vitro* tests, as well as to the Spanish Research Network for Cardiac Computational Modelling (V-Heart-SN) for the interest expressed.

Author contributions

Investigation: RZ ES RR. Model implementation: RZ. Geometrical modeling: ES. Data processing: RZ ES. Validation: RZ ES. Visualization: RZ ES. Discussion: RZ ES RR. Wrote the paper: RZ ES RR

Conflict of interest

The authors declare that they have no conflict of interest.



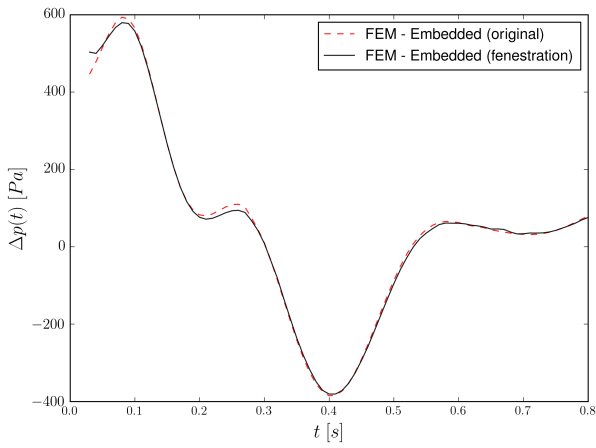
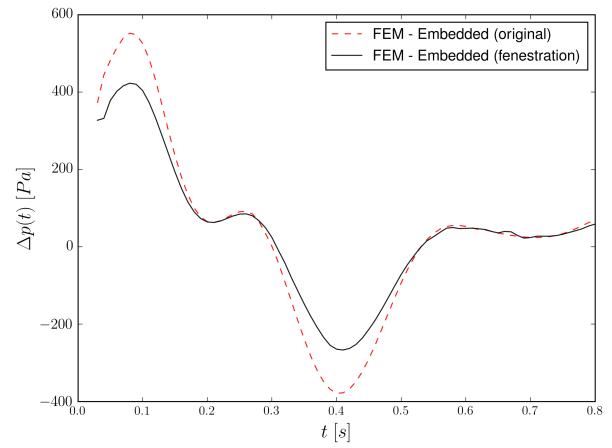
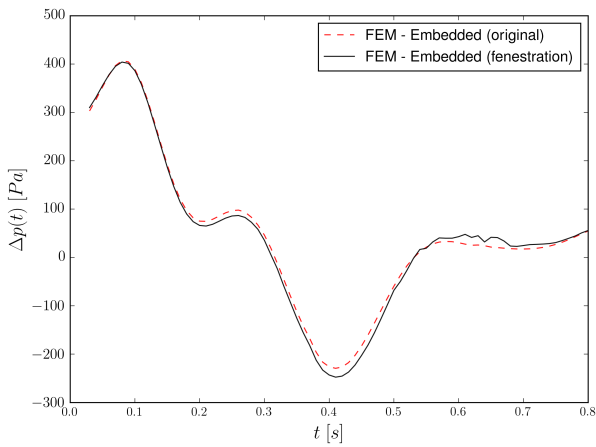
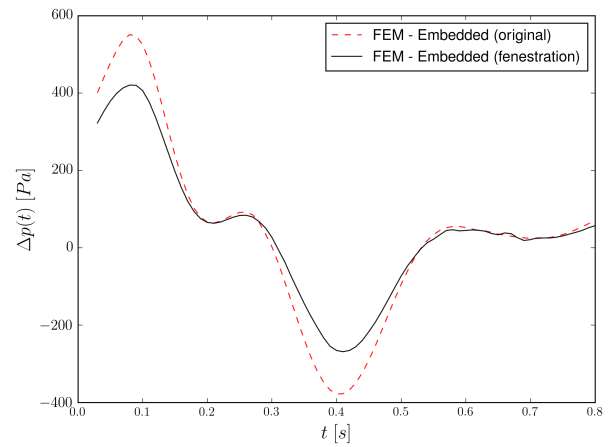
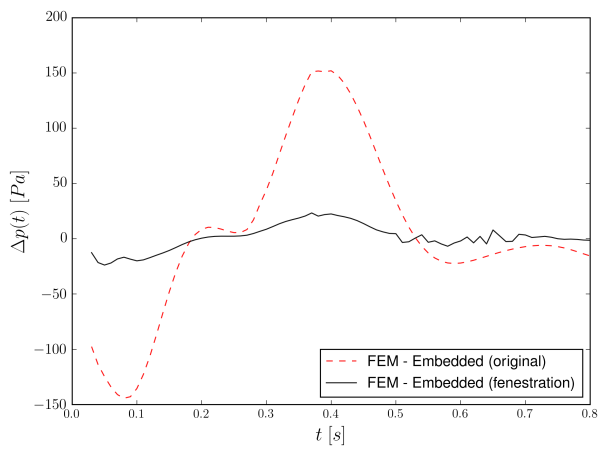
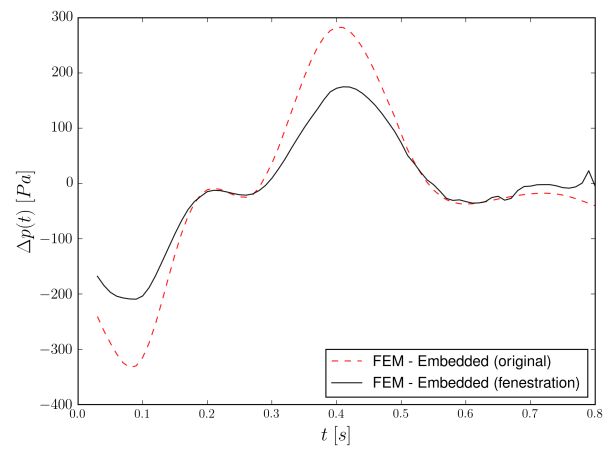
(a) Case A and A_F - TL proximal pressure drop(b) Cases A and A_F - FL proximal pressure drop(c) Cases A and A_F - TL midpoint pressure drop(d) Cases A and A_F - FL midpoint pressure drop

FIGURE 13 Case A_F . Pressure drop evolution at various locations. Comparison with Case A (before fenestration) pressure drop results.

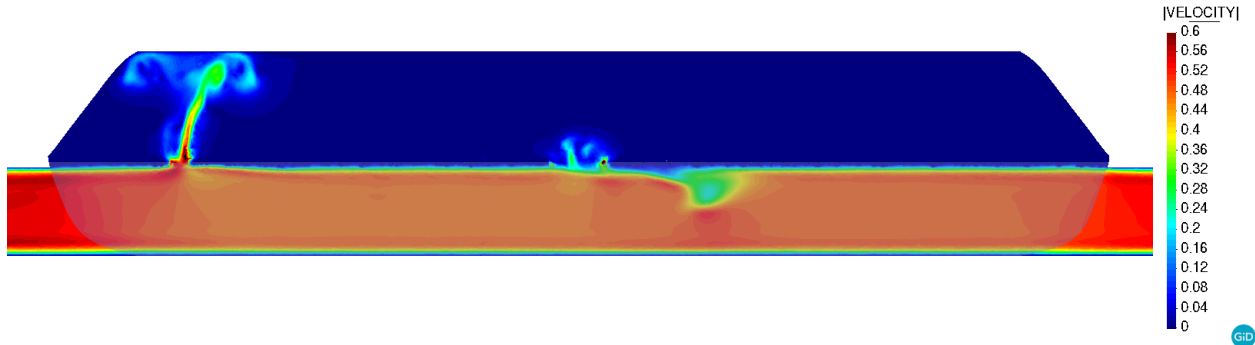


(a) Midpoint

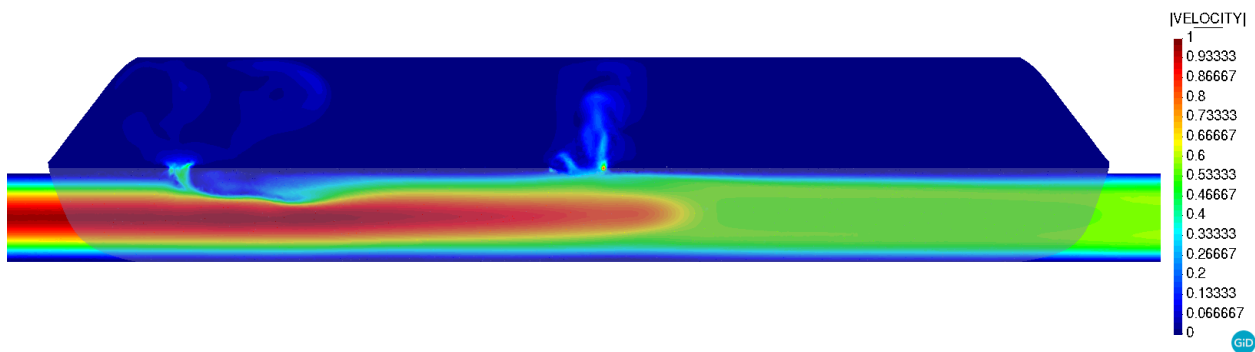


(b) Distal point

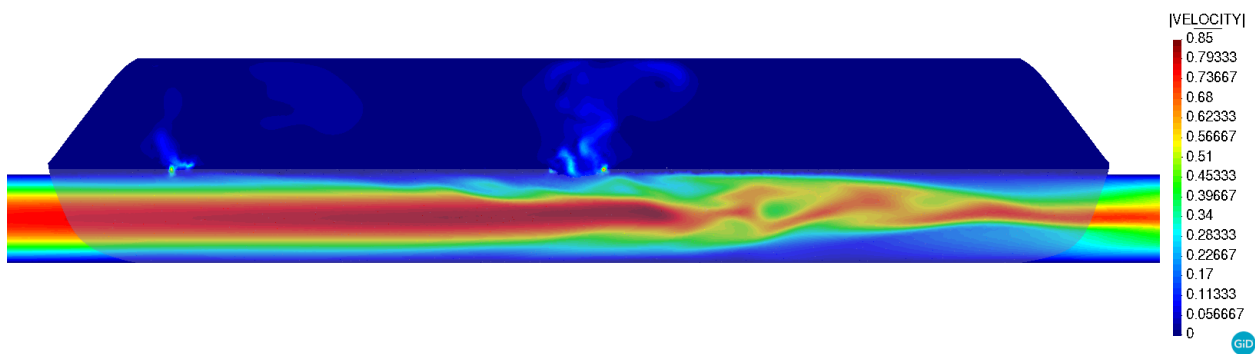
FIGURE 14 Pressure difference between TL and FL. Positive values means higher pressure in TL, whereas a negative value means higher pressure in FL.



(a) $t = 0.09$ s



(b) $t = 0.4$ s



(c) $t = 0.7$ s

FIGURE 15 Case A_F . Velocity cross section at different time steps. IF level set representation shadowed over the cross section.