

1

2 Title: Allostatic load and executive functions in overweight adults

3 Authors: Ottino-González, J.^{a,b,c}, Jurado, M.A.^{a,b,c}, García-García, I.^d, Caldú, X.^{a,b,c}, Prats-Soteras, X.^{a,b,c},
4 Tor, E.^e, Sender-Palacios, M.J.^e, Garolera, M.^{f,g}.

5

6 Affiliations:

7 (a) Departament de Psicologia Clínica i Psicobiologia, Universitat de Barcelona (Spain)

8 (b) Institut de Neurociències, Universitat de Barcelona (Spain)

9 (c) Institut de Recerca Sant Joan de Déu, Hospital Sant Joan de Déu (Spain)

10 (d) Montreal Neurological Institute, McGill University (Canada)

11 (e) CAP Terrassa Nord, Consorci Sanitari de Terrassa (Spain)

12 (f) Hospital de Terrassa, Consorci Sanitari de Terrassa (Spain)

13 (g) Brain, cognition and behaviour research group, Consorci Sanitari de Terrassa (Spain)

14

15

16

17

18

19

20

21

22

23

24

25

26

27

28

29

30

Corresponding author:

31

Dr. María Ángeles Jurado

32

majurado@ub.edu

33

Facultat de Psicologia, Passeig de la Vall d'Hebron, 171 (08035, Barcelona).

34

Tel: + 34 93 312 50 55.

35

1
2
3
4
5
6
7
8
9
10
11
12
13
14
15
16
17
18
19
20
21
22
23
24
25
26
27
28
29
30
31
32
33

Background/Objective: Overweight is linked to inflammatory and neuroendocrine responses potentially prompting deregulations in biological systems harmful to the brain, particularly to the prefrontal cortex. This structure is crucial for executive performance, ultimately supervising behaviour. Thus, in the present work, we aimed to test the relationship between allostatic load increase, a surrogate of chronic physiological stress, and core executive functions, such as cognitive flexibility, inhibitory control, and working memory. **Method:** Forty-seven healthy-weight and 56 overweight volunteers aged from 21-40 underwent medical and neuropsychological examination. **Results:** Overweight subjects exhibited a greater allostatic load index than healthy-weight individuals. Moreover, the allostatic load index was negatively related to inhibitory control. When separated, the link between allostatic load index and cognitive flexibility was more marked in the overweight group. **Conclusions:** An overweight status was linked to chronic physiological stress. The inverse relationship between the allostatic load index and cognitive flexibility proved stronger in this group. Set-shifting alterations could sustain rigid-like behaviours and attitudes towards food.

Keywords: allostatic load; stress; inflammation; executive functions; overweight; BMI

1. Introduction

Overweight and obesity prevalence has tripled in the last three decades, affecting near 2 billion adults in 2016 according to World Health Organization reports (WHO; World Health Organization, 2016). The excess of weight is linked to a poorer quality of life, all-cause mortality, and pathological ageing (Bischof and Park, 2015; Vallis, 2016). Cognitive alterations could be mediated by adiposity-induced low-grade chronic inflammatory states (Bourassa and Sbarra, 2017; Lasselin et al., 2016; Spyridaki et al., 2016). A growing body of research stresses the fact that the organism adapts to energy surplus situations via immune and neuroendocrine adaptations that, in turn, can negatively impact the brain in the long-run (Guillemot-Legris and Muccioli, 2017; Reilly and Saltiel, 2017).

Executive functions (EF) encompass cognitive processes allowing goals achievement. Accordingly to Diamond (2014), core EF such as cognitive flexibility, inhibitory control and working memory allow the performance of superior abilities (i.e., reasoning, problem-solving and planning). These functions are mandatory for blocking hedonic-based feeding and stick to long-term health-related objectives. Consequently, core EF are likely to influence body-weight control and eating behaviour (Dohle et al., 2018). There is a plethora of works addressing that subjects with excess of weight tend

1 to perform worse in tests measuring cognitive flexibility (Perpiñá et al., 2017; Restivo et al., 2017),
2 inhibitory control (Lavagnino et al., 2016; Spitoni et al., 2017), and working memory (Coppin et al.,
3 2014). A recent and extended review of this topic is available in the following work (Yang et al.,
4 2018).

5
6 The allostatic load (AL) model states that pushing of biological systems to restore homeostasis
7 during defiant circumstances may, if sustained, derive in severe further health outcomes (Juster et
8 al., 2010). According to this model, when a stressful situation is identified, primary mediators in the
9 shape of neuroendocrine responses are engaged to mobilise energy reserves. Additional outcomes
10 involve immune, metabolic, and cardiovascular reactions (i.e., secondary outcomes). In this sense,
11 the organism strives to keep the rest of the systems working well-balanced while exhausts resources
12 to guarantee the boost necessary to overcome the stressful situation. Nevertheless, maintaining the
13 organism working at its maximum capacity would eventually lead to the appearance of tertiary
14 outcomes (e.g., type II diabetes, hypertension, etc.). Similar to overweight, the AL has been linked
15 to cardiovascular diseases, poor quality of life, and accelerated brain ageing (Cole et al., 2017; Juster
16 et al., 2010). We have previously demonstrated that an overweight represents a challenge to the
17 brain. Concretely, the escalation in AL was linked to structural changes in regions supporting EF
18 (Ottino-González et al., 2018, 2017), such as the prefrontal cortex (PFC). The PFC is particularly
19 vulnerable to the adverse effects of stress given its many receptors for glucocorticoids (McEwen et
20 al., 2016). To the best of our knowledge, there are only two works exploring the association between
21 AL and EF: one did not find a relationship between AL and working memory (Booth et al., 2015) and
22 the other described a negative link among AL, cognitive flexibility, inhibitory control, and working
23 memory (Karlman et al., 2014). Both works, however, were conducted in middle-aged adults.
24 Hence, the association between AL and EF has been not enough covered to date in young adults.

25
26 In the current study, we aimed to supplement our previous results by comparing executive
27 performance relative to an AL increase in individuals with and without an excess of weight. Thus,
28 we expect to find an inverse relationship between AL index and core EF. Additionally, since
29 overweight previously exhibited higher AL indexes relative to healthy-weight subjects (Ottino-
30 González et al., 2018, 2017), we would presume to observe a stronger negative coupling between
31 chronic stress and executive performance in this group.

32

1 2. Method

2 a. Participants

3 One hundred and three young adults from the city of *Terrassa* (Barcelona, Spain) were recruited
4 from public health centres belonging to the *Consorci Sanitari de Terrassa*. Inclusion criteria involved
5 being from 21 to 40 years old and having a BMI ranging from normal-weight (18.5 to 24.9 kg/m²) to
6 excessive weight (≥ 25 kg/m²). Each participant signed informed consent before entering the study
7 following the Helsinki declaration. In accordance with the WHO classification, forty-seven
8 volunteers classified as healthy-weight (18.59 to 24.99 kg/m²), while 56 were considered as
9 overweight. Twenty-one individuals from this group qualified as overweight (25.2 to 29.82 kg/m²),
10 and 34 of them presented obesity (30.25 to 42.56 kg/m²). The Institutional Ethics Committee (CBUB)
11 and the Institutional Review Board of the University of Barcelona approved the current study (IRB
12 00003099, assurance No.: FWA00004225; <http://www.ub.edu/recerca/comissioetica.htm>).

13

14 b. Allostatic Load Index

15 The difference between the average of two different readings of systolic and diastolic blood
16 pressure, or pulse pressure, served as an extent of cardiovascular functioning, and concretely, of
17 arterial stiffness (Mucci et al., 2016). Serum concentrations of high-sensitive C-reactive protein and
18 fibrinogen worked as surrogates of immune status. The ratio between low and high-density
19 lipoprotein cholesterol, as well as levels of triglycerides, and the Homeostatic Model Assessment for
20 Insulin Resistance (HOMA-IR) index were all considered as proxies of metabolic capacity. Finally,
21 serum cortisol levels were used as a marker of neuroendocrine system functioning. Variables not
22 following a normal distribution were log-transformed. All scores were z-scaled and added into a
23 composite with greater scores meaning higher AL. Additionally, the latent influence of sex over AL
24 was adjusted by regressing out its effects and conducting analyses using the AL standardised
25 residual.

26

27 c. Neuropsychological assessment

28 Cognitive flexibility was evaluated using the perseverative errors from the computerised-version of
29 the Wisconsin Card Sorting Test (WCST) (Heaton, 1999) and the Trail Making Test (TMT) part B minus
30 part A (Reitan, 1958). In the WCST, participants were asked to match a series of cards following a
31 specific rule (i.e., colour, shape or number of elements) not explained to them. The subjects had

1 feedback (i.e., right or wrong) right after every response. For every ten consecutive hits, this rule
2 changed without announcement. Then, responses under the last assumption were computed as
3 perseverative errors. This type of errors mirrored cognitive rigidity, or the inability to switch from
4 the original mindset to an alternative one. The TMT consists of twenty-five circles distributed over
5 a paper sheet. The circles in part A are numbered from 1 to 25, while in part B this sheet included
6 both numbers (i.e., 1 to 13) and letters (i.e., A to L). In part A, the subject had to connect all the
7 circles in order (i.e., 1, 2, 3, ...) as quickly as possible without lifting the pencil from the paper. In part
8 B, the subject had to do the same but alternating between numbers and letters (i.e., 1-A, 2-B, ...). If
9 the volunteer committed a mistake was immediately told to amend it. The completion time (in
10 seconds) from part A was subtracted from part B. This correction (i.e., B minus A) sought to control
11 for the speed processing effects on flexibility. Greater scores meant greater cognitive rigidity. WCST
12 and TMT scores were log-transformed, z-scaled, and reversed before adding them into a composite
13 wherein lower values suggested worse set-shifting performance.

14
15 The interference score in the Stroop's test (Golden, 1995) informed about inhibitory control. The
16 Stroop's test consists of three sheets with 20 words distributed in five columns each. Participants
17 had forty-five seconds to read aloud and as fast as possible each condition. Individuals were
18 instructed not to follow the reading with their finger, and if mistaken, they were told to correct their
19 response immediately. In the word-sheet, the volunteer had to read the following black-inked
20 words: red, green, and blue. In the colour-sheet, the subject had to name the colour (i.e., red, green
21 or blue) of non-readable stimuli (i.e., "XXXX"). In the last condition or the incongruent-sheet, the
22 participant had to name the colour of the word, which differed from the written name (i.e., "green"
23 in red-ink). The interference score (i.e., $[(\text{incongruent sheet} - ((\text{word sheet} * \text{colour sheet}) / (\text{word}$
24 $\text{sheet} + \text{colour sheet}))]$) accounts for reading speed and accuracy effects, as they could exert as
25 confounders. Lower interference values denoted less ability to suppress automatic responses.

26
27 Total score in the Letter-Number subtest (Wechsler Adult Intelligence Scale, or WAIS-III) (Wechsler,
28 1999) equalled to working memory functioning, with greater scores indicating better performance.
29 In this task, participants were read aloud a sequence of numbers and letters that they had to repeat
30 ordering numbers first, from 1 to 10, and then letters, in alphabetical order. The number of series
31 completed represented the total score, in which greater signified better performance in working
32 memory. Within-group potential outliers (± 3.29 SD) had their scores winsorised and re-tested for

1 normality assumption purposes. These outliers were found in the healthy-weight group: one subject
2 had an extremely low interference score, and another participant scored very high in the working
3 memory test.

4
5 d. Procedure

6 Participants were randomly contacted through a telephone call. Subjects with expressed intention
7 to participate were briefly interviewed on general health aspects such as medical (*"Have you ever
8 been diagnosed with any severe medical condition and/or received treatment for any chronic
9 disease?"*), psychiatric (*"Have you ever required psychological counselling, psychiatric treatment or
10 received any formal diagnose?"*) developmental problems (*"Did you had any problems during your
11 school years, such as learning disabilities or ADHD?"*), or substance usage (*"Do or did you take any
12 recreational drug?"*). Potential candidates were cited within the following days to undergo a medical
13 examination and blood sample extraction. Participants were told to fast overnight before the blood-
14 draw and reminded to do so the day before such visit. In this first visit, physicians both took
15 anthropometric measures (i.e., height, weight, and waist circumference) and explored the presence
16 of either past or current disorders considered as exclusion criteria. In addition, volunteers
17 presenting abnormal blood test results (e.g., elevated triglyceride or cholesterol levels) underwent
18 a second draw to confirm exclusion. Exclusion criteria involved either diagnose of or treatment for
19 systemic diseases (i.e., hypothyroidism, hypertension, hypercholesterolemia, type II diabetes, or
20 metabolic syndrome), as well as neurological and psychiatric comorbidities of any kind. As in our
21 previous works, participants with high levels of C-reactive protein (10 mg/L) were excluded because
22 of suspicion of acute infection. Moreover, symptoms that could have suggested an acute presence
23 of pathological eating patterns, mood or anxiety disorders, or substance abuse were also explored.
24 Mild anxiety or depressive symptoms were explored with the Hospital Anxiety and Depression Scale
25 (HADS) (Zigmond and Snaith, 1983), ruling out participants presenting scores equal or greater than
26 11 (Herrero et al., 2003). Moreover, suspicion of eating disorders was addressed by means of the
27 Bulimic Investigatory Test Edinburgh (BITE) (Henderson and Freeman, 1987), excluding volunteers
28 exhibiting scores greater than 20. Finally, substance abuse was assessed with the Structured Clinical
29 Interview for DSM-IV-TR (SCID-I) (First et al., 1999). Subjects not presenting any medical,
30 neurological nor psychiatric comorbidity were included in the neuropsychological visit. In this
31 second appointment, participants presenting an estimated IQ below 85, or a WAIS-III vocabulary
32 subtest score (Wechsler, 1999) lower than 7, were excluded from the study.

1 e. Statistical analysis

2 Data were analysed with the freely distributed R statistical package v.3.4.4 ([https://www.r-](https://www.r-project.org)
3 [project.org](https://www.r-project.org)) and RStudio v.1.1.447 (<https://www.rstudio.com>). Group differences in continuous
4 sociodemographic and neuropsychological variables were tested with one-way ANOVA tests (F).
5 Equality in sex distribution, professional level and income among groups was confirmed with
6 Pearson's chi-square tests (χ^2). All these tests were performed with the *stats* package v.3.5.0 (R Core
7 Team, 2018). Semi-partial Pearson's bivariate correlations (r) were conducted with the sex-adjusted
8 AL index and EF core functions. Being as years of education correlated to executive performance,
9 the effects of this variable were removed from EF performance. Other variables such as age, sex and
10 total income were also included as nuisance factors in additional analyses. Moreover, and to
11 exclusively test for the association between executive functioning and AL, the waist-to-height ratio
12 (WTHR) was also controlled along with years of education. Here, the WTHR served as an extent of
13 visceral adiposity. Abdominal obesity, rather than excess weight itself, is strongly linked to adverse
14 health outcomes (Caleyachetty et al., 2017) and cognitive alterations (Elias et al., 2012). Analyses
15 were first performed in the entire sample, and then in groups separately (*ppcor* package v.1.1, Kim,
16 2015). Then, group-specific correlation coefficients were compared as detailed in Diedenhofen &
17 Musch (*cocor* package v.1.1.3, 2015).

18
19 3. Results

20 Groups did not differ for age ($F_{(1,101)} = 1.30, p = 0.256$) nor education ($F_{(1,101)} = 3.59, p = 0.061$). Groups
21 were equally distributed in sex ($\chi^2 = 0.46, p = 0.496$), professional level ($\chi^2 = 11.04, p = 0.051$), and
22 total income ($\chi^2 = 3.43, p = 0.633$). There were no differences in chronic medication uptake (i.e.,
23 bronchodilators, gastric protectors) ($\chi^2 = 0.14, p = 0.707$) nor oral contraceptive usage ($\chi^2 = 0.08, p$
24 $= 0.776$). As expected, groups diverged for BMI ($F_{(1,76.79)} = 224.47, p < 0.001$) and WTHR ($F_{(1,92.27)} =$
25 $227.5, p < 0.001$). Similarly, groups differed for the AL index ($F_{(1,101)} = 59.3, p < 0.001$). Groups
26 performed equally in cognitive flexibility ($F_{(1,101)} = 0.005, p = 0.940$), inhibitory control ($F_{(1,101)} = 0.66,$
27 $p = 0.418$), and working memory ($F_{(1,101)} = 2.56, p = 0.113$). Variables of interest are shown below in
28 Table 1 and Table 2. Differences in the AL index between groups are depicted in Figure 1.

1 Table 1. Statistics of variables of interest (mean and standard deviation, range, and frequency)

	Overweight (N = 56)		Healthy-weight (N = 47)	
Age	31.52 (5.99)	21 – 40	30.15 (6.14)	21 – 40
Education	13.20 (2.60)	9 – 20	14.15 (2.47)	9 – 18
Males	19		19	
Females	37		28	
Contraceptives	5		5	
Medication	6		4	
BMI (kg/m²)	31.38 (4.21)	25.20 – 42.56	22.10 (1.78)	18.59 – 24.99
WTHR	0.60 (0.07)	0.46 – 0.75	0.46 (0.03)	0.40 – 0.56
AL index	0.52 (0.90)	-1.17 – 2.24	-0.62 (0.71)	-2.22 – 1.01
Flexibility	-0.06 (1.08)	-2.44 – 3.16	0.07 (0.90)	-1.43 – 2.66
Inhibitory control	-0.06 (0.95)	-2.46 – 2.78	0.08 (1.07)	-2.74 – 2.22
Working memory	-0.17 (1.11)	-2.64 – 2.32	0.20 (0.81)	-1.28 – 1.87

BMI = body mass index (kg/m²), WTHR = waist-to-height ratio (cms), AL = Allostatic Load (sex-adjusted)

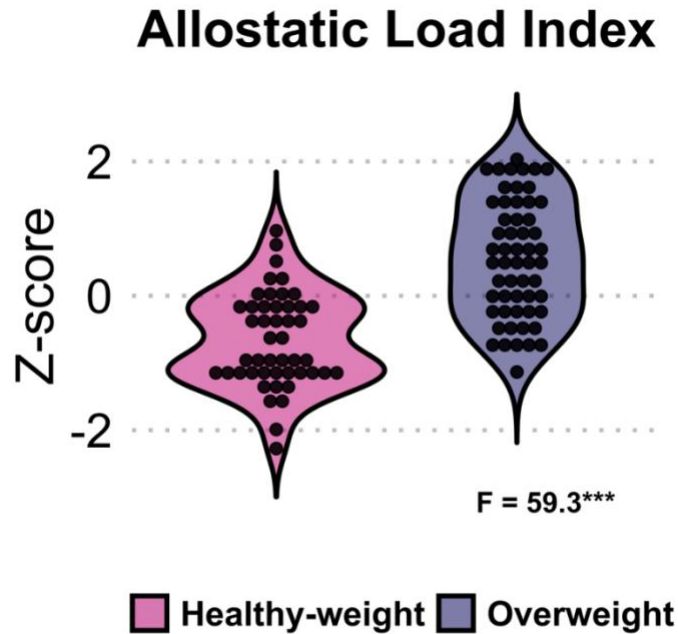
2
3
4
5
6

Table 2. Family income in euros per month and professional level (frequency, %)

	Overweight (N = 56)	Healthy-weight (N = 47)
300 – 899€	3 (5.36%)	1 (2.13%)
900 – 1499€	11 (19.64%)	7 (14.89%)
1500 – 2099€	20 (35.71%)	16 (34.04%)
2100 – 2699€	12 (21.43%)	8 (17.02%)
> 2700€	9 (16.07%)	13 (27.66%)
N.A.	1 (1.78%)	2 (4.26%)
Non-skilled	10 (17.86%)	6 (12.77%)
Skilled manual	13 (23.21%)	5 (10.64%)
Administrative	14 (25.00 %)	8 (17.02%)
Intermediate	11 (19.64%)	8 (17.02%)
Professional	5 (8.93%)	9 (19.15%)
N.A.	3 (5.36%)	11 (23.40%)

N.A. = Not available

7
8
9



21 *Figure 1.* Comparison between groups for the AL index. The overweight group (density map in purple)
 22 exhibited a greater AL index score than the healthy-weight group (density map in pink). *** $p < 0.001$

23
 24 Whole-group correlation analyses revealed a negative relationship between AL index and inhibitory
 25 control ($r_{(99)} = -0.19, p = 0.027$). Trend-level correlations were observed for cognitive flexibility ($r_{(99)}$
 26 $= -0.13, p = 0.093$) and working memory ($r_{(99)} = -0.16, p = 0.051$). Group-specific correlations showed
 27 that AL index and cognitive flexibility were statistically negatively associated in overweight
 28 participants ($r_{(52)} = -0.32, p = 0.008$), but not in healthy-weight subjects ($r_{(43)} = 0.09, p = 0.289$).
 29 Correlation coefficients differed between groups ($Z = -2.07, p = 0.019$). AL index and inhibitory
 30 control were exclusively related among healthy-weight subjects ($r_{(43)} = -0.34, p = 0.011$), but not in
 31 overweight participants ($r_{(52)} = -0.11, p = 0.204$). However, group-specific correlations did not diverge
 32 ($Z = 1.19, p = 0.116$). Furthermore, AL index and working memory were linked only within healthy-
 33 weight subjects ($r_{(43)} = -0.29, p = 0.024$), but not in overweight participants ($r_{(52)} = -0.15, p = 0.144$).
 34 Groups were not different for such association ($Z = 0.78, p = 0.219$). Whole-group and group-specific
 35 associations are presented in Figure 2. The interaction between AL index and cognitive flexibility
 36 depending on the BMI group is available in Figure 3. The analyses including age, sex, and income as
 37 additional covariates remained unchanged and therefore will not be further discussed.

38

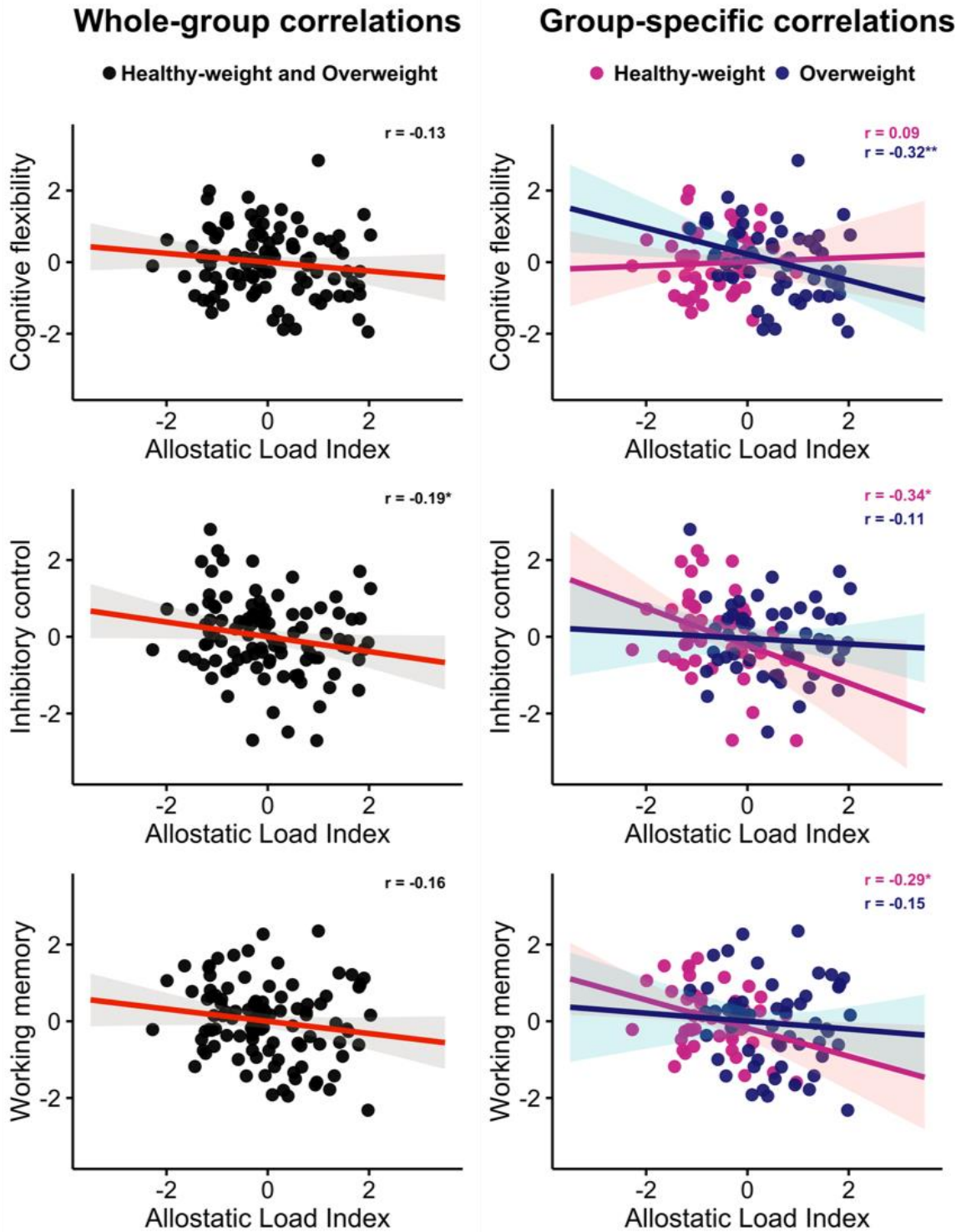
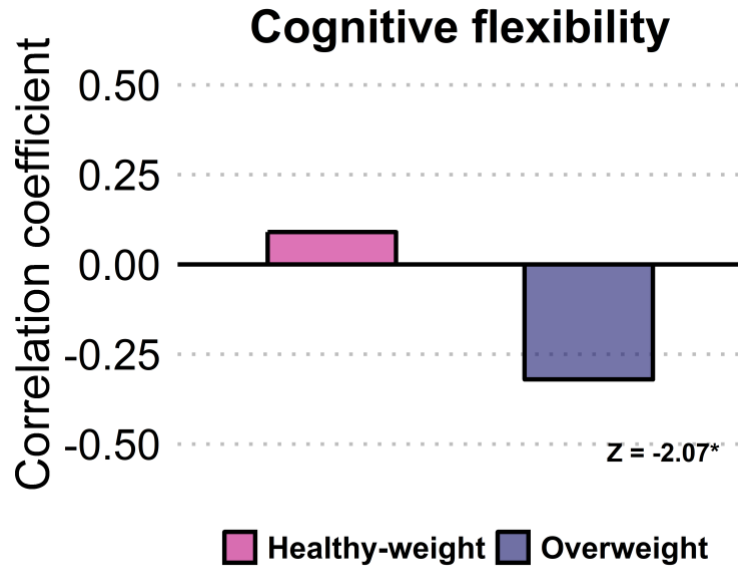


Figure 2. Correlations between the AL index and core EF in the entire group (on the right, black = all participants), and accounting for groups (on the left, pink = healthy-weight, purple = overweight). * $p < 0.05$, ** $p < 0.01$

1
2
3
4
5
6
7
8



1
2 *Figure 3. Group-specific correlation comparison for AL Index and core EF (pink = healthy-weight, purple =*
3 *overweight). * $p < 0.05$*

4
5 4. Discussion

6 In the current work, we have addressed the relationship between AL and executive performance.
7 As expected, the overweight group exhibited greater levels of AL index when compared to their
8 healthy-weight peers. Furthermore, the AL inversely correlated with inhibitory control. Moreover,
9 groups exhibited differences in their relationship between the AL index and core EF, and particularly,
10 with the cognitive flexibility ability. This association emerged as significant exclusively in the
11 overweight sample. This correlation proved different among groups, being more markedly for
12 individuals with an excess of weight. What is more, normal-weight volunteers exhibited a negative
13 relationship between AL, inhibitory control, and working memory. Such associations, however, were
14 not different among groups.

15
16 The AL model states that frequent homeostasis disruption could lead to severe health and
17 psychological comorbidities in the future (Juster et al., 2010). Accordingly, the excess of weight itself
18 represents a challenging scenario to the organism. Briefly, we adapt to energy surplus situations by
19 prompting intense immune and neuroendocrine responses ultimately insulting the PFC and the
20 functions it supports (Guillemot-Legris and Muccioli, 2017; Reilly and Saltiel, 2017). Similar to the AL
21 model, the immunologic model of self-regulatory failure (Shields et al., 2017) states that
22 inflammation insults the PFC and disturb the cognitive resources required to stick to health-fostering

1 behaviours. Likewise, problems within self-regulation could increase people's risk to engage in
2 further inflammatory-inducing habits such as drinking, smoking or overeating. Although it is strongly
3 discouraged to draw any statement upon causality with the present design and type of analysis, an
4 escalation in AL could induce failures in core EF central for self-discipline. Hypothetically, a person
5 who daily eats beyond their caloric need will challenge their organism and increase the likelihood
6 to influence (or exacerbate pre morbid) failures in self-regulation. This would naturally pave the way
7 for further unhealthy behaviours to take place encouraging this long-lasting physiological
8 imbalance. Hence, an increase in AL could be interpreted as a risk factor for disturb self-discipline.
9 Following this thought, and without targeting either of the two groups, failures in inhibitory control
10 could yield to problems in suppressing hedonic-driven behaviours, such as unnecessary food
11 consumption (Calvo et al., 2014; Lavagnino et al., 2016; Spitoni et al., 2017). Equally, working
12 memory alterations could provoke not being able to keep health-related long-term objectives
13 available when required, impacting negatively on eating behaviour and body-weight control
14 (Whitelock et al., 2018). Lastly, the inability to switch from one mindset to another could translate
15 in problems in abandoning disadvantageous food choices (Lasselín et al., 2016; Perpiñá et al., 2017;
16 Restivo et al., 2017). Overall, and despite some correlations were present at a trend-level, chronic
17 physiological stress and EF negatively interact with each other and can affect eating behaviour.

18
19 To date, the only works exploring the relationship between AL and EF were conducted in aged
20 populations (Booth et al., 2015; Karlamangla et al., 2014). In Booth et al. (2015), the AL did inversely
21 relate to general cognition, but not to executive performance (i.e., non-verbal reasoning and
22 working memory). By contrast, in Karlamangla and cols. (2014), inhibitory control, set-shifting, and
23 working memory proved a negative relationship with AL. Here, we have also found a negative
24 association between AL and inhibitory control, and with cognitive flexibility and working memory in
25 a trend-level. However, when addressing separately, groups exhibited differences for such links.
26 Concretely, the correlation between the AL index and set-shifting only emerged as negative and
27 statistically meaningful in the overweight group. Contrariwise, this association in the healthy-weight
28 group was weak, non-significant, and positive. When compared, these slopes emerged as different.
29 Such conflicting results could put the spotlight on how body-weight status differently shapes the
30 interaction between AL and cognitive flexibility. The increase in AL among overweight could be more
31 hurtful for this ability. Furthermore, inhibitory control and working memory correlated to AL index
32 solely within healthy-weight subjects. Even though they did not arise as statistically significant, the

1 nature of the link between the AL index, inhibitory control, and working memory among participants
2 with an excess of weight was negative as well. Each group's slopes for these relationships were not
3 different between groups. It might be possible that compensatory mechanisms are being mobilised
4 in overweight to dilute the damaging effects of chronic stress exposure. In this vein, the two groups
5 included non-clinical, young, and well-educated subjects. Altogether, these factors might have
6 behaved as protective in the face of the adverse outcomes of being overweight, at the very least,
7 until comorbidities aggregate over time. These circumstances may have also explained why groups,
8 when compared, did not display differences for core EF performance, which is a statement broadly
9 pronounced in the literature (Fitzpatrick et al., 2013; Smith et al., 2011; Yang et al., 2018). Since
10 overweight participants (BMI from 25 to 29.9 kg/m²) could have watered-down potential
11 differences between groups, we have additionally repeated this analysis comparing individuals with
12 obesity (N= 34) to normal-weight subjects (N = 47). Groups did not differ in their performance in
13 core EF. As abovementioned, it is not possible ruling out the possibility of compensatory or
14 protective mechanisms operating on the side. What is more, it is likely that the current sample size
15 would have limited our statistical power to find subtle differences among groups, as we further
16 discuss in the next paragraph.

17
18 The current results are an extension of prior works (Ottino-González et al., 2017; 2018) where we
19 exposed the link between AL and the integrity of brain regions supportive of high-order cognitive
20 activity. The sample used in all three studies shared the same socio-demographic characteristics.
21 Consequently, these findings add some robustness to the already published studies. Nevertheless,
22 the current work has some limitations that worth the commentary. First, the cross-sectional nature
23 and the type of analysis performed (i.e., bivariate correlations) made it difficult to draw any
24 conclusion on causality. As with the circularity limitations pointed out in Karlamangla et al. (2014),
25 the AL and the performance in EF can influence each other ultimately affecting behaviour. Equally,
26 behaviour can influence these former two. Either longitudinal or experimental approaches would
27 shed a broader light on this matter. As early noted, our limited sample size might have restricted
28 our ability to catch, if any, subtle differences or relationships. Given the characteristics of the two
29 groups, these effects would have potentially emerged as such with more appropriate sample sizes.
30 Concretely, three-hundred and ten individuals per group would be required to find small
31 discrepancies in one-sided T-tests with 80% of chances of not incurring in type II errors. Because of
32 the design, the kind of analysis, and the sample size, we advise taking these results with caution.

1 Furthermore, the study of sexual dimorphism in stress vulnerability could be an interesting line of
2 research that we have not had the opportunity to conduct in the current work. The ups-and-downs
3 of testosterone are well known because, by one hand, it presents anti-inflammatory properties as
4 it exerts an inhibitory effect on adipocyte maturation (Bianchi, 2019). However, testosterone also
5 shows a strong link with cardiovascular diseases in ageing men (Goodale et al., 2017). In the same
6 way, it has been pointed out that estradiol might have protective effects on cognition (Luine, 2014).
7 Although our sample size (i.e., 19 males per group) did not allow us to test for this appropriately,
8 we have included the results and a brief discussion of this preliminary analysis in the supplementary
9 material. Nevertheless, we encourage other researchers to explore this issue in samples with
10 sufficient statistical power.

11
12 In conclusion, when compared to healthy-weight individuals, overweight subjects exhibited higher
13 AL indexes. Regardless of the group, the AL index was negatively related to inhibitory control, and
14 with other core executive abilities to a trend-level. Optimal functioning within primary executive
15 domains is necessary for enabling self-discipline and health-fostering behaviours. The inverse
16 correlation between the AL index and cognitive flexibility proved stronger in the overweight group
17 when compared to healthy-weight individuals. Set-shifting alterations could sustain rigid-like
18 behaviours, obstructing not only the healthiest-fare choice but also self-regulation in general.

19
20 5. Collate acknowledgements

21 JOG, MAJ, IGG, XC, and MG contributed to study design and conception, analyses and results
22 interpretation. JOG, IGG, XPS, ET, and MSP participated in data acquisition. Additionally, all authors
23 critically revisited the work, approved its final version for publishing, and agreed to be accountable
24 for all aspects of such work.

25 6. Funding

26 María Ángeles Jurado and Maite Garolera received funding from the Spanish Ministry of Economy,
27 Industry and Competitiveness (PS2013-48045 and PSI2017-86536). Jonatan Ottino González was
28 awarded a PhD fellowship from the University of Barcelona (ADR2015-2016).

29
30
31

1 7. References

- 2 Bianchi, V.E., 2019. The Anti-Inflammatory Effects of Testosterone. *J. Endocr. Soc.* 3, 91–107.
3 <https://doi.org/10.1210/js.2018-00186>
- 4 Bischof, G.N., Park, D.C., 2015. Obesity and Aging. *Psychosom. Med.* 77, 697–709.
5 <https://doi.org/10.1097/PSY.0000000000000212>
- 6 Booth, T., Royle, N.A., Corley, J., Gow, A.J., Valdés Hernández, M. del C., Muñoz Maniega, S.,
7 Ritchie, S.J., Bastin, M.E., Starr, J.M., Wardlaw, J.M., Deary, I.J., 2015. Association of allostatic
8 load with brain structure and cognitive ability in later life. *Neurobiol. Aging* 36, 1390–9.
9 <https://doi.org/10.1016/j.neurobiolaging.2014.12.020>
- 10 Bourassa, K., Sbarra, D.A., 2017. Body mass and cognitive decline are indirectly associated via
11 inflammation among aging adults. *Brain. Behav. Immun.* 60, 63–70.
12 <https://doi.org/10.1016/j.bbi.2016.09.023>
- 13 Caleyachetty, R., Thomas, G.N., Toulis, K.A., Mohammed, N., Gokhale, K.M., Balachandran, K.,
14 Nirantharakumar, K., 2017. Metabolically Healthy Obese and Incident Cardiovascular Disease
15 Events Among 3.5 Million Men and Women. *J. Am. Coll. Cardiol.* 70, 1429–1437.
16 <https://doi.org/10.1016/j.jacc.2017.07.763>
- 17 Calvo, D., Galioto, R., Gunstad, J., Spitznagel, M.B., 2014. Uncontrolled eating is associated with
18 reduced executive functioning. *Clin. Obes.* 4, 172–179. <https://doi.org/10.1111/cob.12058>
- 19 Cole, J.H., Ritchie, S.J., Bastin, M.E., Valdés Hernández, M.C., Muñoz Maniega, S., Royle, N., Corley,
20 J., Pattie, A., Harris, S.E., Zhang, Q., Wray, N.R., Redmond, P., Marioni, R.E., Starr, J.M., Cox,
21 S.R., Wardlaw, J.M., Sharp, D.J., Deary, I.J., 2017. Brain age predicts mortality. *Mol. Psychiatry*
22 00, 1–8. <https://doi.org/10.1038/mp.2017.62>
- 23 Coppin, G., Nolan-Poupart, S., Jones-Gotman, M., Small, D.M., 2014. Working memory and reward
24 association learning impairments in obesity. *Neuropsychologia* 65, 146–55.
25 <https://doi.org/10.1016/j.neuropsychologia.2014.10.004>
- 26 Diamond, A., 2014. Executive Functions. *Annu. Rev. Clin. Psychol.* 64, 135–168.
27 <https://doi.org/10.1146/annurev-psych-113011-143750.Executive>
- 28 Diedenhofen, B., Musch, J., 2015. cocor: A Comprehensive Solution for the Statistical Comparison

- 1 of Correlations. PLoS One 10, e0121945. <https://doi.org/10.1371/journal.pone.0121945>
- 2 Dohle, S., Diel, K., Hofmann, W., 2018. Executive functions and the self-regulation of eating
3 behavior: A review. *Appetite* 124, 4–9. <https://doi.org/10.1016/j.appet.2017.05.041>
- 4 Elias, M.F., Goodell, A.L., Waldstein, S.R., 2012. Obesity, cognitive functioning and dementia: back
5 to the future. *J. Alzheimers. Dis.* 30 Suppl 2, S113-25. <https://doi.org/10.3233/JAD-2011->
6 111175
- 7 First, M.B., Spitzer, R.L., Gibbon, M., Williams, J.B.W., 1999. *Structured Clinical Interview for DSM-*
8 *IV Axis I Disorders-Clinician*. Masson, Barcelona.
- 9 Fitzpatrick, S., Gilbert, S., Serpell, L., 2013. Systematic Review: Are Overweight and Obese
10 Individuals Impaired on Behavioural Tasks of Executive Functioning? *Neuropsychol. Rev.* 23,
11 138–156. <https://doi.org/10.1007/s11065-013-9224-7>
- 12 Golden, C.J., 1995. *STROOP, test de colores y palabras*, TEA Ediciones. TEA Ediciones.
- 13 Goodale, T., Sadhu, A., Petak, S., Robbins, R., 2017. Testosterone and the Heart. *Methodist*
14 *Debakey Cardiovasc. J.* 13, 68–72. <https://doi.org/10.14797/mdcj-13-2-68>
- 15 Guillemot-Legrís, O., Muccioli, G.G., 2017. Obesity-Induced Neuroinflammation: Beyond the
16 Hypothalamus. *Trends Neurosci.* <https://doi.org/10.1016/j.tins.2017.02.005>
- 17 Heaton, R.K., 1999. *Wisconsin Card Sorting Test: Computer Version 4-Research Edition*. *Psychol.*
18 *Assess. Resour.* 4.
- 19 Henderson, M., Freeman, C.P., 1987. A self-rating scale for bulimia. The “BITE.” *Br. J. Psychiatry J.*
20 *Ment. Sci.* 150, 18–24.
- 21 Herrero, M.J., Blanch, J., Peri, J.M., De Pablo, J., Pintor, L., Bulbena, A., 2003. A validation study of
22 the hospital anxiety and depression scale (HADS) in a Spanish population. *Gen. Hosp.*
23 *Psychiatry* 25, 277–283.
- 24 Juster, R.P., McEwen, B.S., Lupien, S.J., 2010. Allostatic load biomarkers of chronic stress and
25 impact on health and cognition. *Neurosci. Biobehav. Rev.* 35, 2–16.
26 <https://doi.org/10.1016/j.neubiorev.2009.10.002>
- 27 Karlamangla, A.S., Miller-Martinez, D., Lachman, M.E., Tun, P.A., Koretz, B.K., Seeman, T.E., 2014.

- 1 Biological correlates of adult cognition: Midlife in the United States (MIDUS). *Neurobiol.*
2 *Aging* 35, 387–394. <https://doi.org/10.1016/j.neurobiolaging.2013.07.028>
- 3 Kim, S., 2015. ppcor: An R Package for a Fast Calculation to Semi-partial Correlation Coefficients.
4 *Commun. Stat. Appl. Methods* 22, 665–674. <https://doi.org/10.5351/CSAM.2015.22.6.665>
- 5 Lasselin, J., Magne, E., Beau, C., Aubert, A., Dexpert, S., Carrez, J., Layé, S., Forestier, D.,
6 Ledaguenel, P., Capuron, L., 2016. Low-grade inflammation is a major contributor of impaired
7 attentional set shifting in obese subjects. *Brain. Behav. Immun.* 58, 63–68.
8 <https://doi.org/10.1016/j.bbi.2016.05.013>
- 9 Lavagnino, L., Arnone, D., Cao, B., Soares, J.C., Selvaraj, S., 2016. Inhibitory control in obesity and
10 binge eating disorder: A systematic review and meta-analysis of neurocognitive and
11 neuroimaging studies. *Neurosci. Biobehav. Rev.* 68, 714–726.
12 <https://doi.org/10.1016/j.neubiorev.2016.06.041>
- 13 Luine, V.N., 2014. Estradiol and cognitive function: Past, present and future. *Horm. Behav.* 66,
14 602–618. <https://doi.org/10.1016/j.yhbeh.2014.08.011>
- 15 McEwen, B.S., Nasca, C., Gray, J.D., 2016. Stress Effects on Neuronal Structure: Hippocampus,
16 Amygdala, and Prefrontal Cortex. *Neuropsychopharmacology* 41, 3–23.
17 <https://doi.org/10.1038/npp.2015.171>
- 18 Mucci, N., Giorgi, G., De Pasquale Ceratti, S., Fiz-Pérez, J., Mucci, F., Arcangeli, G., 2016. Anxiety,
19 Stress-Related Factors, and Blood Pressure in Young Adults. *Front. Psychol.* 7.
20 <https://doi.org/10.3389/fpsyg.2016.01682>
- 21 Ottino-González, J., Jurado, M.A., García-García, I., Segura, B., Marqués-Iturria, I., Sender-Palacios,
22 M.J., Tor, E., Prats-Soteras, X., Caldú, X., Junqué, C., Garolera, M., 2017. Allostatic Load Is
23 Linked to Cortical Thickness Changes Depending on Body-Weight Status. *Front. Hum.*
24 *Neurosci.* 11, 1–11. <https://doi.org/10.3389/fnhum.2017.00639>
- 25 Ottino-González, J., Jurado, M.A., García-García, I., Segura, B., Marqués-Iturria, I., Sender-Palacios,
26 M.J., Tor, E., Prats-Soteras, X., Caldú, X., Junqué, C., Pasternak, O., Garolera, M., 2018.
27 Allostatic load and disordered white matter microstructure in overweight adults. *Sci. Rep.* 8,
28 15898. <https://doi.org/10.1038/s41598-018-34219-8>
- 29 Perpiñá, C., Segura, M., Sánchez-Reales, S., 2017. Cognitive flexibility and decision-making in

- 1 eating disorders and obesity. *Eat. Weight Disord. - Stud. Anorexia, Bulim. Obes.* 22, 435–444.
2 <https://doi.org/10.1007/s40519-016-0331-3>
- 3 R Core Team, 2018. R: A Language and Environment for Statistical Computing.
- 4 Reilly, S.M., Saltiel, A.R., 2017. Adapting to obesity with adipose tissue inflammation. *Nat. Rev.*
5 *Endocrinol.* 13, 633–643. <https://doi.org/10.1038/nrendo.2017.90>
- 6 Reitan, R.M., 1958. Validity of the Trail Making Test as an indicator of organic brain damage.
7 *Percept Mot Ski.* 8, 271–276.
- 8 Restivo, M.R., McKinnon, M.C., Frey, B.N., Hall, G.B., Syed, W., Taylor, V.H., 2017. The impact of
9 obesity on neuropsychological functioning in adults with and without major depressive
10 disorder. *PLoS One* 12, e0176898. <https://doi.org/10.1371/journal.pone.0176898>
- 11 Shields, G.S., Moons, W.G., Slavich, G.M., 2017. Inflammation, Self-Regulation, and Health: An
12 Immunologic Model of Self-Regulatory Failure. *Perspect. Psychol. Sci.* 12, 588–612.
13 <https://doi.org/10.1177/1745691616689091>
- 14 Smith, E., Hay, P., Campbell, L., Trollor, J.N., 2011. A review of the association between obesity and
15 cognitive function across the lifespan: implications for novel approaches to prevention and
16 treatment. *Obes. Rev.* 12, 740–755. <https://doi.org/10.1111/j.1467-789X.2011.00920.x>
- 17 Spitoni, G.F., Ottaviani, C., Petta, A.M., Zingaretti, P., Aragona, M., Sarnicola, A., Antonucci, G.,
18 2017. Obesity is associated with lack of inhibitory control and impaired heart rate variability
19 reactivity and recovery in response to food stimuli. *Int. J. Psychophysiol.* 116, 77–84.
20 <https://doi.org/10.1016/j.ijpsycho.2017.04.001>
- 21 Spyridaki, E.C., Avgoustinaki, P.D., Margioris, A.N., 2016. Obesity, inflammation and cognition.
22 *Curr. Opin. Behav. Sci.* 9, 169–175. <https://doi.org/10.1016/j.cobeha.2016.05.004>
- 23 Vallis, M., 2016. Quality of life and psychological well-being in obesity management: improving the
24 odds of success by managing distress. *Int. J. Clin. Pract.* 70, 196–205.
25 <https://doi.org/10.1111/ijcp.12765>
- 26 Wechsler, D., 1999. WAIS III. Escala de Inteligencia de Wechsler para adultos III (adaptación
27 española ed.). TEA Editores S.A., Madrid.
- 28 Whitelock, V., Nouwen, A., van den Akker, O., Higgs, S., 2018. The role of working memory sub-

1 components in food choice and dieting success. *Appetite* 124, 24–32.

2 <https://doi.org/10.1016/j.appet.2017.05.043>

3 World Health Organization, 2016. Obesity and overweight [WWW Document]. WHO. URL

4 <http://www.who.int/mediacentre/factsheets/fs311/en/> (accessed 12.16.16).

5 Yang, Y., Shields, G.S., Guo, C., Liu, Y., 2018. Executive function performance in obesity and

6 overweight individuals: A meta-analysis and review. *Neurosci. Biobehav. Rev.* 84, 225–244.

7 <https://doi.org/10.1016/j.neubiorev.2017.11.020>

8 Zigmond, A.S., Snaith, R.P., 1983. The Hospital Anxiety and Depression Scale. *Acta Psychiatr.*

9 *Scand.* 67, 361–370. <https://doi.org/10.1111/j.1600-0447.1983.tb09716.x>

10

11

12

13

14

15

16

17

18

19

20

21

22

23

24

25

1 8. Supplementary Material

2

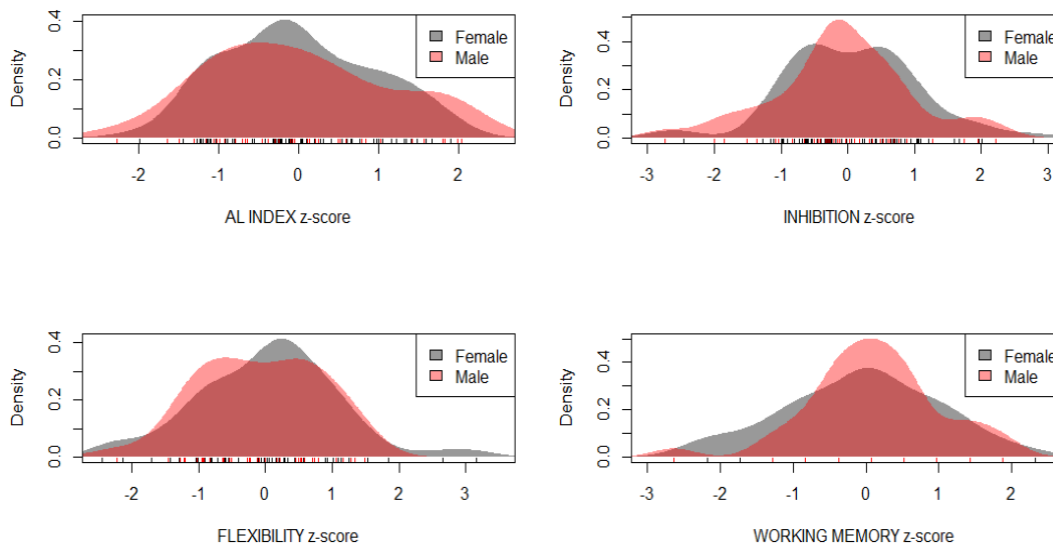
3 This supplementary analysis is motivated due to the potential differences in how females and males
4 could react to chronic stress exposure. Briefly, and despite testosterone naturally has anti-
5 inflammatory properties as it exerts an inhibitory effect on adipose tissue formation and maturation
6 (Bianchi, 2019), testosterone is also linked to greater incidence of cardiovascular diseases among
7 ageing males (Goodale et al., 2017). Equally, it has also been broadly discussed whether estradiol
8 might exert as a protective factor over cognition (Luine, 2014).

9

10 A. Whole-group comparison between males and females

11

12 Males and females were not different in age ($T_{(101)} = 0.74, p = 0.463$), years of education ($T_{(101)} = 0.55,$
13 $p = 0.582$), income ($X^2 = 6.33, p = 0.276$), professional level ($X^2 = 1.23, p = 0.942$) nor chronic
14 medication usage ($X^2 = 0.22, p = 0.942$). Likewise, males and females did not differ for BMI ($W =$
15 $1226.5, p = 0.956$), WTHR ($W = 1302, p = 0.649$), or AL index ($T_{(101)} = -0.19, p = 0.851$). Normality
16 distribution for variables of interests (i.e., AL index, cognitive flexibility, inhibitory control and
17 working memory) were confirmed across males and females, as shown below in Figure 1.

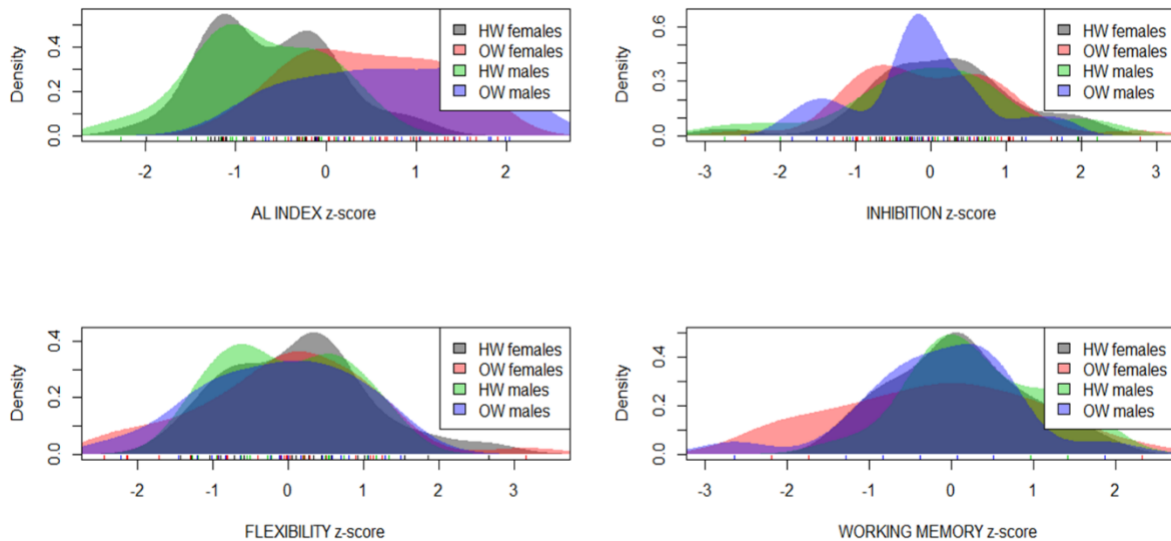


18 Figure 1 – Density distribution on variables of interest between males and females (z-scores)

19

1 Females with overweight and normal weight did not diverge in age ($T_{(63)} = -0.35, p = 0.729$), years of
 2 education ($T_{(63)} = 1.91, p = 0.061$), income ($\chi^2 = 10.61, p = 0.060$), professional level ($\chi^2 = 4.80, p =$
 3 0.441), chronic medication ($\chi^2 < 0.001, p = 0.990$) or oral contraceptive consumption ($\chi^2 = 0.08, p =$
 4 0.776).

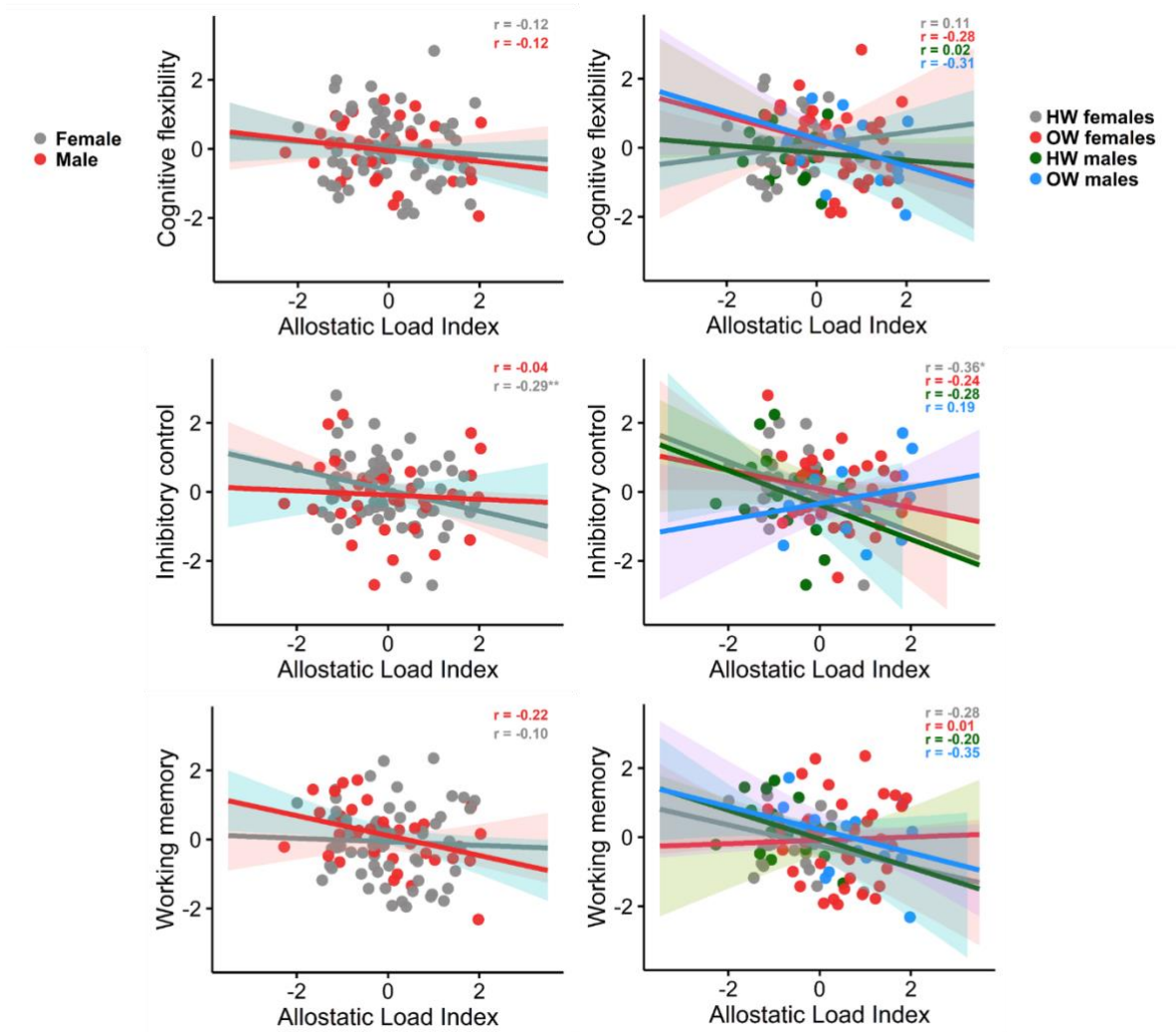
5
 6 Males with and without excessive weight were not different in age ($T_{(36)} = -1.33, p = 0.191$), years of
 7 education ($T_{(36)} = 0.69, p = 0.496$), income ($\chi^2 = 2.22, p = 0.818$), professional level ($\chi^2 = 10, p = 0.075$)
 8 or chronic medication usage ($\chi^2 = 0.36, p = 0.548$). Variables of interest followed a normal
 9 distribution as displayed below in Figure 2.



10 Figure 2 – Density plots accounting for sex and BMI group for variables of interest (z-scores)

11
 12
 13 Significant correlations only emerged for inhibitory control among females ($r_{(61)} = -0.29, p = 0.009$).
 14 When accounting for BMI group, this correlation arose as meaningful within healthy-weight females
 15 ($r_{(24)} = -0.36, p = 0.034$). In line with the original results, trend-level correlations were observed
 16 between healthy-weight females with working memory ($p = 0.084$), as well as with cognitive
 17 flexibility in women with an excess of weight ($p = 0.050$). Correlations between females and males,
 18 as well as correlations within females and males accounting for BMI group, are depicted below in
 19 Figure 3.

20



1

2

3 Figure 3 – On the left, correlations between the AL index and core EF accounting for males and females. On
 4 the right, correlations between the AL index and core EF separating for males and females regarding BMI
 5 group (healthy-weight or overweight). HW = healthy-weight, OW = overweight. * $p < 0.05$, ** $p < 0.01$

6

7 B. Discussion

8

9 In consonance with our findings, when comparing females and males, the formers presented a
 10 significant link with inhibitory control. Likewise, only the group of healthy-weight females presented
 11 a negative correlation with this domain. Although the relationship between cognitive flexibility and
 12 the AL index was negative and strong among males (-0.31) and females (-0.28) with excessive
 13 weight, such associations did not emerge as significant. What is more, women with excessive weight
 14 exhibited a trend-like negative association with inhibitory control (-0.24), while males exposed the
 15 opposite (0.19). In turn, overweight men showed a robust and negative link with working memory

1 performance (-0.35), whereas females did not (0.01). Furthermore, the directionality of all the three
2 possible correlations among females and males with normal weight were all in the same direction
3 (i.e., null or slightly positive for cognitive flexibility, and negative for inhibitory control and working
4 memory). Altogether, the positive relationship in overweight males for inhibitory control, as well as
5 the negative link in working memory among overweight females should be both further explored to
6 disentangle whether this is due to hormone-related compensatory mechanisms or not. Similar to
7 testosterone behaving as protective because of its anti-inflammatory properties, the shielding
8 effects of estradiol on cognition have also been largely discussed (Luine, 2014). The lack of results,
9 particularly among males who have exhibited very strong correlations, is perhaps because of the
10 limited statistical power inherited from limited sample sizes. It is noteworthy to remark that there
11 were only nineteen males per BMI group. For instance, to qualify as statistically meaningful, the
12 correlation of -0.38 observed among overweight males would have required at least 48 subjects to
13 do so with an 80% of chances of not committing type II error (this is, not finding as statistically
14 meaningful a true effect). In sum, more research is needed in disentangle how sex-dimorphism may
15 shock-absorb or boost the far-reaching consequences of sustained biological deregulation linked to
16 an excess of weight.

17