

This is a repository copy of *Pro-carcinogen activation and mutational signatures model the initiation of carcinogenesis in human urothelial tissues in vitro*.

White Rose Research Online URL for this paper:
<https://eprints.whiterose.ac.uk/158935/>

Version: Published Version

Article:

Baker, Simon Charles orcid.org/0000-0002-2755-6012, Mason, Andrew Stephen orcid.org/0000-0002-8222-3974 and Southgate, Jenny orcid.org/0000-0002-0135-480X (2020) Pro-carcinogen activation and mutational signatures model the initiation of carcinogenesis in human urothelial tissues in vitro. *European Urology*. pp. 143-147. ISSN 0302-2838

<https://doi.org/10.1016/j.eururo.2020.03.049>

Reuse

This article is distributed under the terms of the Creative Commons Attribution (CC BY) licence. This licence allows you to distribute, remix, tweak, and build upon the work, even commercially, as long as you credit the authors for the original work. More information and the full terms of the licence here:
<https://creativecommons.org/licenses/>

Takedown

If you consider content in White Rose Research Online to be in breach of UK law, please notify us by emailing eprints@whiterose.ac.uk including the URL of the record and the reason for the withdrawal request.

available at www.sciencedirect.com
journal homepage: www.europeanurology.com



European Association of Urology



Brief Correspondence

Procarcinogen Activation and Mutational Signatures Model the Initiation of Carcinogenesis in Human Urothelial Tissues In Vitro

Simon C. Baker^{a,b,*}, Andrew S. Mason^{a,b}, Jennifer Southgate^{a,b}

^aJack Birch Unit for Molecular Carcinogenesis, Department of Biology, Heslington, York, UK; ^bYork Biomedical Research Institute, University of York, Heslington, York, UK

Article info

Article history:

Accepted March 30, 2020

Associate Editor:

James Catto

Keywords:

APOBEC
BaP
Benzo[a]pyrene
Bladder
Bladder cancer
CYP1A1
Cytochrome P450
DNA mutation
Urothelium
Whole-genome DNA sequencing



www.eu-acme.org/europeanurology

Please visit

www.eu-acme.org/europeanurology to answer questions on-line. The EU-ACME credits will then be attributed automatically.

Abstract

Disparity between genome-wide mutations in bladder and other cancers where smoking is a risk factor raises questions about carcinogenesis in different epithelia. To develop an experimental model of bladder carcinogenesis, we clonally expanded in vitro differentiated normal human urothelial (NHU) cells following exposure to an exemplar procarcinogen and used whole-genome DNA sequencing to derive mutational signatures. Benzo[a]pyrene (BaP) was activated by endogenous cytochrome P450 (cytochrome P450 family 1 subfamily A member 1 [CYP1A1]) to create genomically modified NHU cells. Comparison with the Catalogue of Somatic Mutations in Cancer (COSMIC) showed that mutations induced by BaP in NHU cells were similar to smoking-associated signatures in bladder and other cancers, including single- and doublet-base substitution signatures characterised by C > A transversions (COSMIC_SBS4 and COSMIC_DBS2, respectively), and an insertion/deletion signature of C deletions in homopolymer regions (COSMIC ID3). Our study provides the first direct evidence that BaP is activated locally in the urothelium, initiating the well-described smoking-associated mutational signatures. An absence of other common bladder cancer (BLCA)-associated genomic signatures points strongly to other primary causes of BLCA, which the new experimental approach described here is well placed to investigate. Mutational signatures ignore whether genes are affected, but tissue-specific drivers (*KMT2D*, *KMT2C*, and *CDKN1A*) were significantly overmutated in this model, providing insight on the emergent selection pressures.

Patient summary: In a carefully controlled laboratory setting, we exposed normal human urothelial tissues to a procarcinogen (benzo[a]pyrene) found in cigarette smoke. We show that the urothelial tissues activated the carcinogen and led to mutations forming across the genome in a characteristic pattern. This particular “mutational signature” is found in bladder tumours and other smoking-induced cancers (eg, lung); however, our study highlights that there are other unknown mutational processes in bladder cancer that is not the direct result of smoke carcinogens, and this will require further investigation.

© 2020 The Authors. Published by Elsevier B.V. on behalf of European Association of Urology. This is an open access article under the CC BY license (<http://creativecommons.org/licenses/by/4.0/>).

* Corresponding author. Jack Birch Unit for Molecular Carcinogenesis, Department of Biology, University of York, Heslington, York YO10 5DD, UK. Tel.: +44 1904 328706; Fax: +44 1904 328704. E-mail address: simon.baker@york.ac.uk (S.C. Baker).

Lifetime accrual of mutations in the cells of our different tissues reflects the interactions between carcinogen exposure(s), genomic damage, tissue-specific gene expression, and the DNA-repair machinery. Whole-genome DNA

sequencing (wgDNAseq) identifies the thousands of passenger and rarer driver mutations, with the frequency of each base-change-type relative to its genomic context described as a “mutational signature” [1]. As an aggregated

<https://doi.org/10.1016/j.eururo.2020.03.049>

0302-2838/© 2020 The Authors. Published by Elsevier B.V. on behalf of European Association of Urology. This is an open access article under the CC BY license (<http://creativecommons.org/licenses/by/4.0/>).



historical record of carcinogen-tissue interactions, tumour mutational signatures are complex and challenging to deconvolute. The potential to combine advances in genomic sequencing with in vitro tissue-specific models offers a timely opportunity to relate controlled carcinogen exposures directly to molecular initiating events for specific cancer types.

As a tissue evolved to endure exposure to urinary toxins/toxicants, including carcinogens, urothelium differentiates to form a tight urinary barrier epithelium with an inducible capacity to metabolise xenobiotics [2]. Paradoxically, phase I metabolism may result in the activation of procarcinogens (including 2-naphthylamine, benzidine, 4,4'-methylenebis(2-chloroaniline), 4-aminobiphenyl, and benzo[a]pyrene), leading to local initiation of urothelial carcinogenesis, but no experimental system has yet been established to model this scenario. We generated functional barrier-forming differentiated urothelium from isolated, in vitro-propagated normal human urothelial (NHU) cells. Following exposure to 2 μ M benzo[a]pyrene (BaP) for 7 d, urothelial cultures remained viable, as reported previously [2] and demonstrated by retention of barrier tightness (Supplementary Fig. 1). After maintenance for a further 7 d, control and exposed tissues were disaggregated and expanded as clones on irradiated 3T3-J2 feeder cells in proliferative cell culture conditions, before genomic analysis to determine mutational signatures (Fig. 1).

NHU cultures thus exposed to BaP showed significantly increased C>A transversions ($p < 0.0001$; Fig. 1); these mutations arise following cytochrome P450 family 1 sub-family A member 1 (CYP1A1)-mediated activation of BaP and formation of guanine DNA adducts [2]. Single nucleotide polymorphisms in CYP1A1 have been associated with bladder cancer (BLCA) risk [3]. Clear signatures of single-base substitution (SBS) C>A transversions ("SBS-BaP-NHU"; Fig. 2A; derivation detailed in Supplementary Fig. 2) and doublet-base substitution (DBS) CC>AA transversions ("DBS-BaP-NHU"; Fig. 2B and Supplementary Fig. 3) were apparent. In addition, a BaP-induced insertion/deletion (ID) signature of C deletions was found in association with homopolymer regions ("ID-BaP-NHU"; Fig. 2C and Supplementary Fig. 4). No karyotypic abnormalities were observed in BaP-exposed clones.

C>A transversions constitute 10% of mutations in the exome-sequenced BLCA cohort of The Cancer Genome Atlas (TCGA; Supplementary Fig. 5). Analysis of SBS-BaP-NHU using the "signal" workflow [4] and cosine similarity testing allowed comparison with pan-cancer and tissue-specific tumour signatures. Catalogue of Somatic Mutations in Cancer (COSMIC)_SBS4, the "smoking signature" found in tissues exposed directly to tobacco smoke [1] and ascribed experimentally to BaP [5], was found to be the closest match in the largest pan-cancer database [1] (Supplementary Fig. 6 and 7). COSMIC_SBS4 has been observed in a wgDNAseq

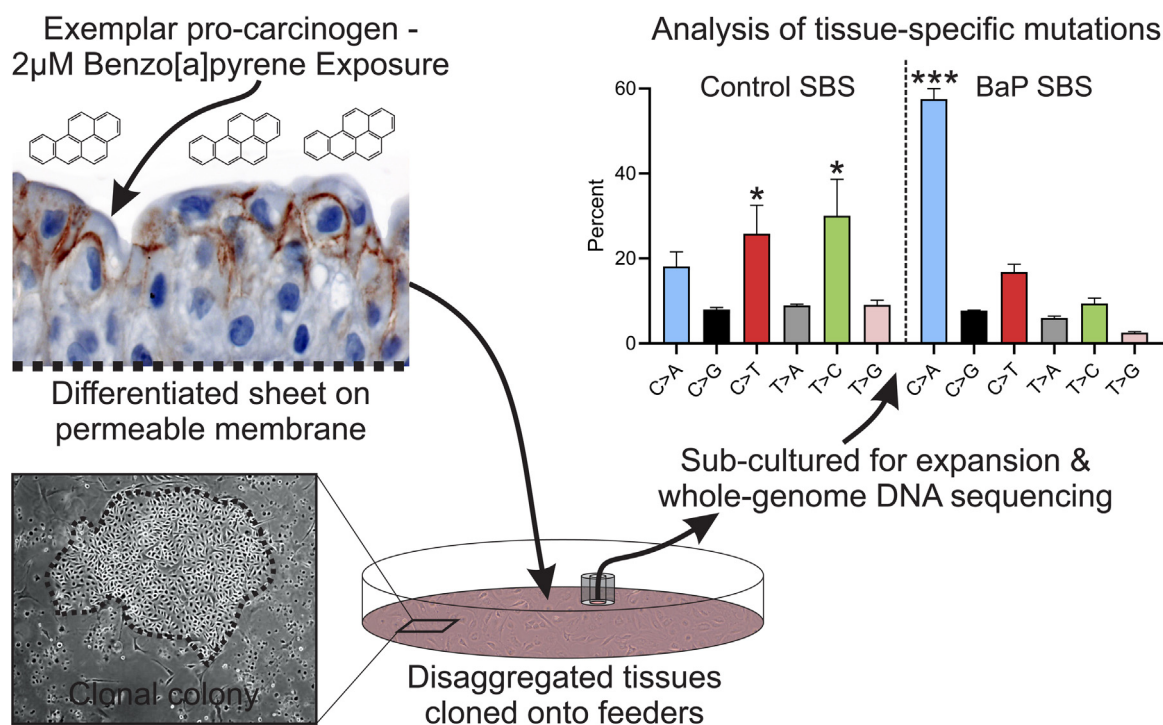


Fig. 1 – Schematic of the experimental approach wherein functionally differentiated NHU cell sheets (generating a transepithelial electrical resistance of $>2000 \Omega \cdot \text{cm}^2$; Supplementary Fig. 1) were exposed to benzo[a]pyrene (BaP) for 7 d before single-cell clones were expanded as colonies in feeder-supported cultures. Expanded clones were analysed by wgDNAseq and mutational signatures were derived. Graph shows mean percentage of mutations within each class of single-base substitution (SBS). Error bars = standard deviation ($n=3$, control, and $n=4$, BaP-exposed independent clones). The control SBS percentages (ANOVA $p=0.0002$) showed significant enrichment of C>T and T>C transitions, which are more common than transversions in virtually all DNA sequences. In the control SBS, C>A transversions were not significantly enriched. The BaP SBS percentages showed significant enrichment of C>A transversions. Multiple comparisons were performed using Tukey's post hoc test. ANOVA = analysis of variance; NHU = normal human urothelial; wgDNAseq = whole-genome DNA sequencing. * C>T and T>C changes were significantly enriched ($p < 0.01$) in comparison with C>G, T>A, and T>G. *** $p < 0.0001$ for C>A changes in comparison with all other types.

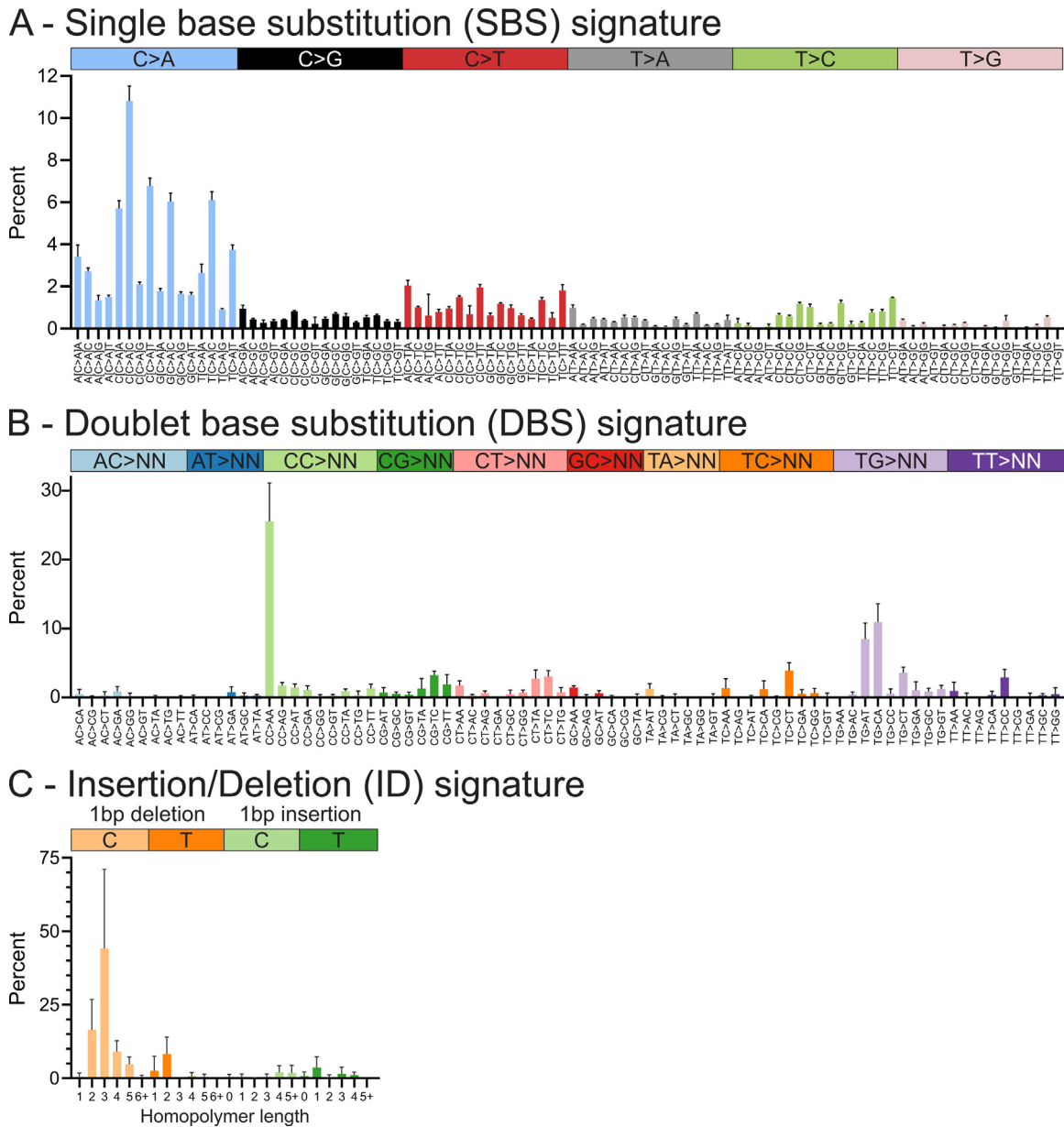


Fig. 2 – Mutational signatures derived from BaP-exposed functionally differentiated NHU cells. (A) Single-base substitution (SBS) signature of 96 subtypes based around six substitution classes (referred to by the pyrimidine of the mutated Watson-Crick base pair) and framed by their 3' and 5' flanking nucleotides. The SBS signature shows an enrichment mainly of diverse C > A transversions. (B) Doublet-base substitution (DBS) signature of 78 strand-agnostic mutation types show an enrichment mainly of CC > AA. TG > AT and TG > CA substitutions were additionally observed and were previously reported following BPDE exposure of iPS cells [5]. (C) Insertions/deletion (ID) signature reveals BaP-caused single C/G deletions most commonly in homopolymer runs of two to four cytosines/guanines (n=4 independent BaP-exposed clones normalised to n=3 independent control clones; bars indicate the mean and error bars denote the standard deviation). Data in this figure are expressed as percentages; for counts and normalisation data, see Supplementary Figures 2–4. BaP=benzo[a]pyrene; BPDE=benzo(a)pyrene diol epoxide; iPS=induced pluripotent stem; NHU=normal human urothelial.

BLCA cohort (n = 85 [6]), although not that of the COSMIC study itself (n = 23 [1]). COSMIC signatures SBS4, DBS2, and ID3 are frequently found together as a triad of smoke-induced mutations [1]. DBS-BaP-NHU and ID-BaP-NHU, which correspond directly to COSMIC signatures DBS2 and ID3, are found in most BLCA (Supplementary Fig. 8 [1]). C > A dominated signatures have been detected de novo in BLCA, of which “Bladder_F” was most similar to SBS-BaP-

NHU and is closely related to the smoking signatures of other tissues [4,7] (Supplementary Fig. 6 and 7).

Our study supports a role for BaP in bladder carcinogenesis. BaP is a polycyclic aromatic hydrocarbon (PAH) procarcinogen found in cigarette smoke and detectable in the urine of smokers or healthy volunteers after a PAH-rich meal [8]. Cigarette smoking is the main risk factor for BLCA (estimated hazard ratio is 2–4 for current smokers [9]).

Our results support the capacity of urothelium to activate BaP locally, initiating BLCA-relevant mutations within the epithelium. Such initiated cells were retained viable within the barrier urothelium and capable of clonal expansion in a proliferative setting. This attests to the potential for carcinogen-initiated cells to remain nascent within the tumour-suppressive environment of the mitotically quiescent urothelium until promoted by a regenerative signal. A recent study of induced pluripotent stem (iPS) cells exposed to either 2 μM BaP (with metabolic activation provided by rat liver S9 fraction) or the adduct-forming metabolite benzo(a)pyrene diol epoxide (BPDE; 0.125 μM) [5] found similar signatures to SBS-BaP-NHU with both exposures (Supplementary Fig. 7). However, the changes observed in DBS-BaP-NHU and ID-BaP-NHU were observed only in iPS cells exposed to BPDE, and not BaP+S9 [5]. These results combine with the detection of the similar COSMIC signatures DBS2 and ID3 in BLCA [1,6], to support a fundamental role for local procarcinogen activation by urothelium in bladder carcinogenesis.

Mutational signatures specifically ignore the location of observed mutations, but tissue-specific carcinogenesis is critically reliant on where specific driver mutations occur. To establish the disease relevance of this model, we interrogated the location of mutations observed in relation to areas of active transcription. Linear regression indicated a significant increase in mutation rate associated with areas of active transcription ($p < 0.0001$; Supplementary Fig. 9). Tumour studies have described an inverse correlation between gene expression and mutation rate [10]. Hypothetically, this is due to efficient transcription-coupled DNA repair (“TCR”), although it is possible that the evolutionary selection of tumour cells favours those with enhanced TCR. We selected genes frequently mutated in TCGA BLCA cohort to perform a focussed analysis in BaP-exposed NHU cells (Supplementary Table 1). Whilst most genes gained mutations in a pattern consistent with a random distribution of mutations across the genome, *KMT2D*, *KMT2C*, and *CDKN1A* were significantly overmutated, whilst *PIK3CA*, *RB1*, *ATM*, *KMT2A*, *ASXL2*, and *FBXW7* were significantly protected from mutation (Supplementary Table 1). This provides novel evidence of the gene (and hence driver) selection pressures operating on initiated (BaP-exposed) cells during proliferative expansion (promotion).

Whilst our BaP-exposure study found the canonical smoking signatures, it did not find evidence for COSMIC signatures SBS2/SBS13, which account for most mutations in BLCA and are ascribed to apolipoprotein B mRNA editing enzyme catalytic polypeptide-like (APOBEC) activity [1,6]. This lack of evidence of APOBEC activity strongly suggests that carcinogen-induced genomic stress per se (and BaP specifically) does not lead to persistence of single-stranded genomic DNA sufficient to trigger APOBEC-mediated mutagenesis in the tissue and predicts an additional mechanism. The new experimental system described here is well placed to address the question of APOBEC activation and other gaps in our understanding of BLCA aetiopathology.

Author contributions: Simon C. Baker had full access to all the data in the study and takes responsibility for the integrity of the data and the accuracy of the data analysis.

Study concept and design: Baker.

Acquisition of data: Baker.

Analysis and interpretation of data: Mason, Baker.

Drafting of the manuscript: Baker, Mason.

Critical revision of the manuscript for important intellectual content: Baker, Mason, Southgate.

Statistical analysis: Mason, Baker.

Obtaining funding: Baker, Southgate.

Administrative, technical, or material support: None.

Supervision: None.

Other: None.

Financial disclosures: Simon C. Baker certifies that all conflicts of interest, including specific financial interests and relationships and affiliations relevant to the subject matter or materials discussed in the manuscript (eg, employment/affiliation, grants or funding, consultancies, honoraria, stock ownership or options, expert testimony, royalties, or patents filed, received, or pending), are the following: None.

Funding/Support and role of the sponsor: This study was funded by York Against Cancer and Department of Biology Pump-Priming funding. Simon C. Baker was also supported in part by the Wellcome Trust (092430/Z/10/Z) and Centre for Chronic Diseases and Disorders (C2D2; award 105624).

Acknowledgements: The authors would like to thank Dr. Serena Nik-Zainal (University of Cambridge) for her support throughout the project and Dr John Davey (Bioscience Technology Facility, University of York) for bioinformatics assistance. Data on wgDNAseq have been deposited at <https://www.ncbi.nlm.nih.gov/sra> (SRA accession: SAMN14260674, SAMN14260675, SAMN14260676, SAMN14260677, SAMN14260678, SAMN14260679 and SAMN14260680; embargoed until publication). Data on mRNAseq have been deposited at <https://www.ncbi.nlm.nih.gov/geo/> (GEO accession: GSE146372; embargoed until publication).

CRediT authorship contribution statement

Simon C. Baker: Conceptualization, Methodology, Software, Data curation, Writing - original draft, Visualization, Project administration, Funding acquisition. **Andrew S. Mason:** Software, Data curation, Writing - review & editing. **Jennifer Southgate:** Writing - review & editing, Funding acquisition.

Appendix A. Supplementary data

Supplementary material related to this article can be found, in the online version, at doi:<https://doi.org/10.1016/j.eururo.2020.03.049>.

References

- [1] Alexandrov LB, Kim J, Haradhvala NJ, et al. The repertoire of mutational signatures in human cancer. *Nature* 2020;578:94–101.
- [2] Baker SC, Arlt VM, Indra R, et al. Differentiation-associated urothelial cytochrome P450 oxidoreductase predicates the xenobiotic-

- metabolizing activity of "luminal" muscle-invasive bladder cancers. *Mol Carcinog* 2018;57:606–18.
- [3] Grando JP, Kuasne H, Losi-Guembarovski R, et al. Association between polymorphisms in the biometabolism genes CYP1A1, GSTM1, GSTT1 and GSTP1 in bladder cancer. *Clin Exp Med* 2009;9:21–8.
- [4] Degasperi A, Amarante TD, Czarnecki J, et al. A practical framework and online tool for mutational signature analyses show intertissue variation and driver dependencies. *Nature Cancer* 2020;1:249–63.
- [5] Kucab JE, Zou X, Morganella S, et al. A compendium of mutational signatures of environmental agents. *Cell* 2019;177:821–36, e16.
- [6] Priestley P, Baber J, Lolkema MP, et al. Pan-cancer whole-genome analyses of metastatic solid tumours. *Nature* 2019;575:210–6.
- [7] Fantini D, Seiler R, Meeks JJ. Molecular footprints of muscle-invasive bladder cancer in smoking and nonsmoking patients. *Urol Oncol* 2019;37:818–25.
- [8] Hilton DC, Trinidad DA, Hubbard K, Li Z, Sjodin A. Measurement of urinary Benzo[a]pyrene tetrols and their relationship to other polycyclic aromatic hydrocarbon metabolites and cotinine in humans. *Chemosphere* 2017;189:365–72.
- [9] Rink M, Crivelli JJ, Shariat SF, Chun FK, Messing EM, Soloway MS. Smoking and bladder cancer: a systematic review of risk and outcomes. *Eur Urol Focus* 2015;1:17–27.
- [10] Lawrence MS, Stojanov P, Polak P, et al. Mutational heterogeneity in cancer and the search for new cancer-associated genes. *Nature* 2013;499:214–8.