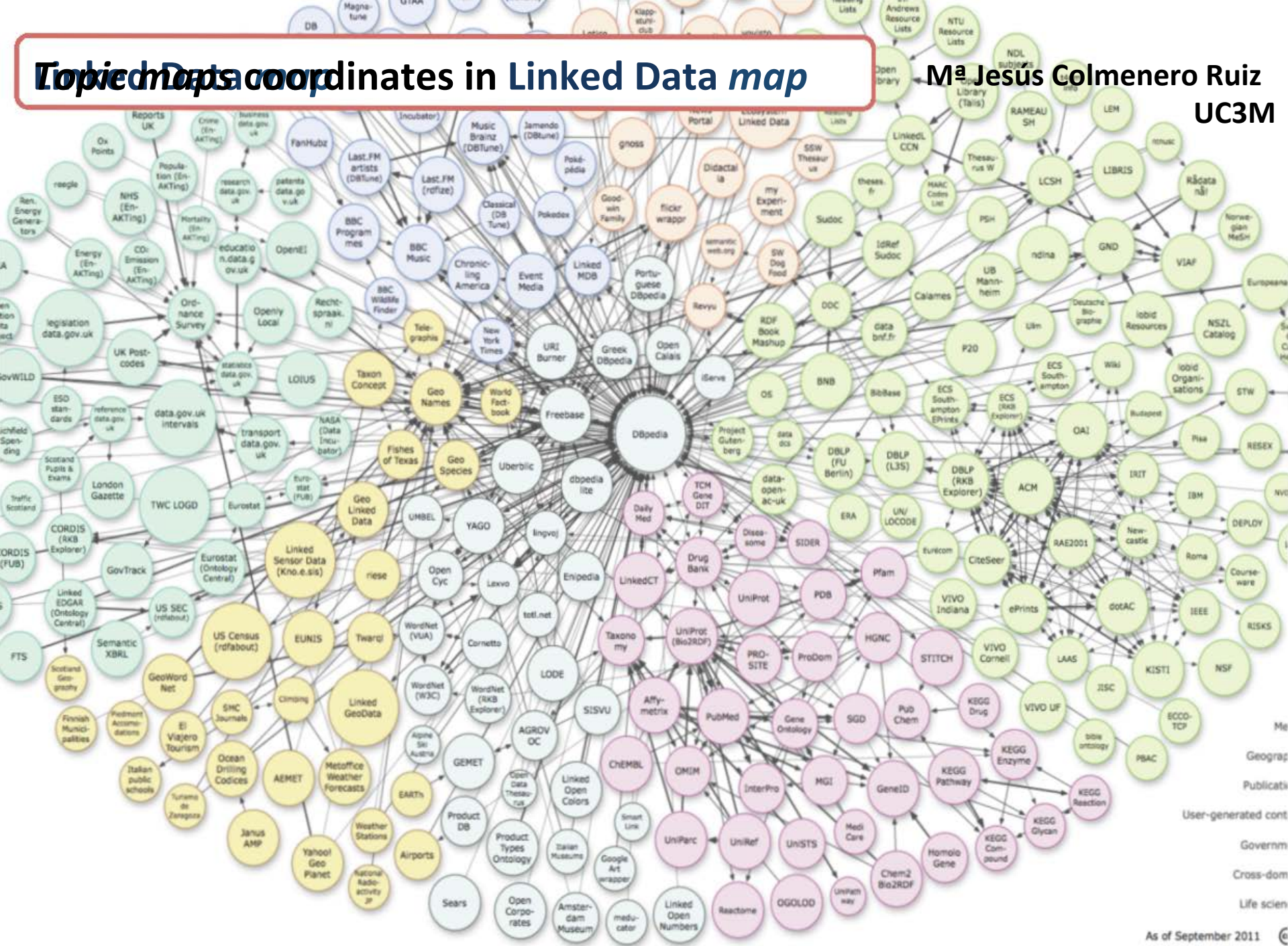


Topic Data coordinates in Linked Data map

Ma Jesús Colmenero Ruiz
UC3M



Topic maps coordinates in **Linked Data map**

- ISO 2000; 2006 “Topic maps” standard :
 - basic elements: TAO
- Topics and occurrences identified by URIs
 - it provides an value added, since it can differentiate between both of them
- PSI – Published Subjects Identifiers (interoperability way)
 - contextual information to identify subjects (humans and machines)
 - PSI repositories: subj3ct -- as linked data
- Topic maps fits perfectly in the semantic Web space and Linked data
 - Put your Topic maps in Linked data *map*