

Legend

- Late Quaternary and Holocene deposits
 - Kidnappers Group
 - Mangaheia Group
 - Tolaga Group
 - Mesozoic Basement (mz)
- V21** NZMS sheets

Fig.1. Map showing the distribution of the three lithostratigraphic groups forming the late Neogene succession in central parts of Hawke's Bay. Also shown is the extent of Late Quaternary and Holocene deposits, and the extent of NZMS 260 1:50,000 map sheets.

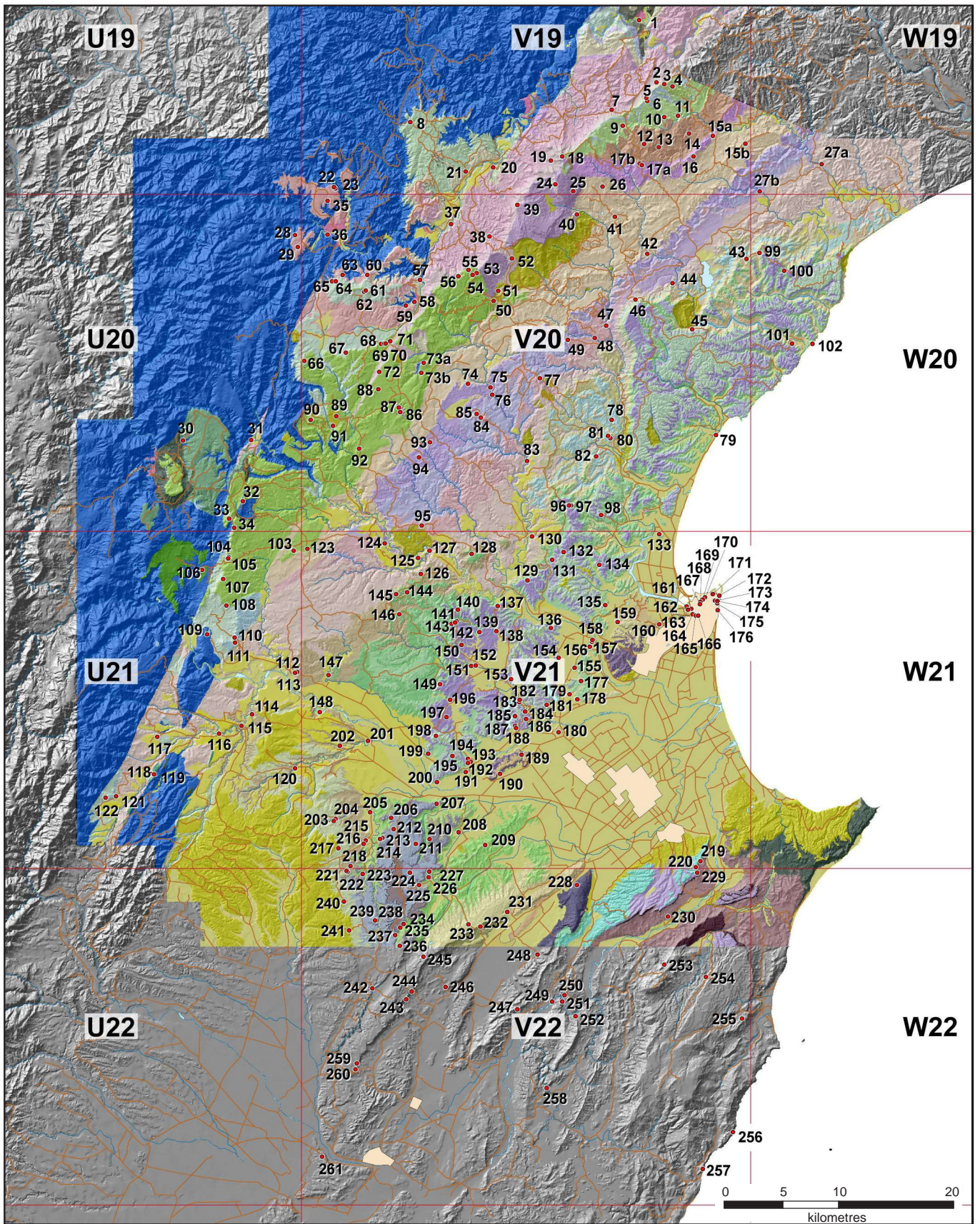


Fig. 2. Location of sites for which stratigraphic columns are reported here. Also shown is the distribution of lithostratigraphic formations (Legend on following page) within the Tologa and Mangaheia Groups (Fig.1.).

LEGEND

Units in the north and west

	Kaiwaka Formation
	Petane Formation
	Esk Mudstone
	Waipunga Formation
	Matahorua Formation
	Pohue Formation
	Te Waka Formation
	Puketitiri Formation
	Pakaututu Formation
	Mangatoro Formation
	Blowhard Formation
	Titiokura Formation
	Mokonui Sandstone
	Waitere Formation
	Te Haroto Formation
	Poamoko Formation
	Whakamarino Formation
	Torlesse composite Terrane

Units in the south and east
















	Late Quaternary deposits
	Taupo Pumice
	Kidnappers Group
	Poutaki Formation
	Okauawa Formation
	Kereru Formation
	Mount Mary Pebbly Limestone
	Sentry Box Formation
	Mason Ridge Formation
	Makaretu Mudstone
	Pakipkai Limestone
	Black Reef Calcareous Sandstone
	Taradale Mudstone
	Undiff. "Te Aute" limestone and mudstone beds
	Undiff. Early Pliocene-Cretaceous

Fig. 2. (continued). Legend for geological map (previous page) showing the distribution of formations in central parts of Hawke's Bay Basin.

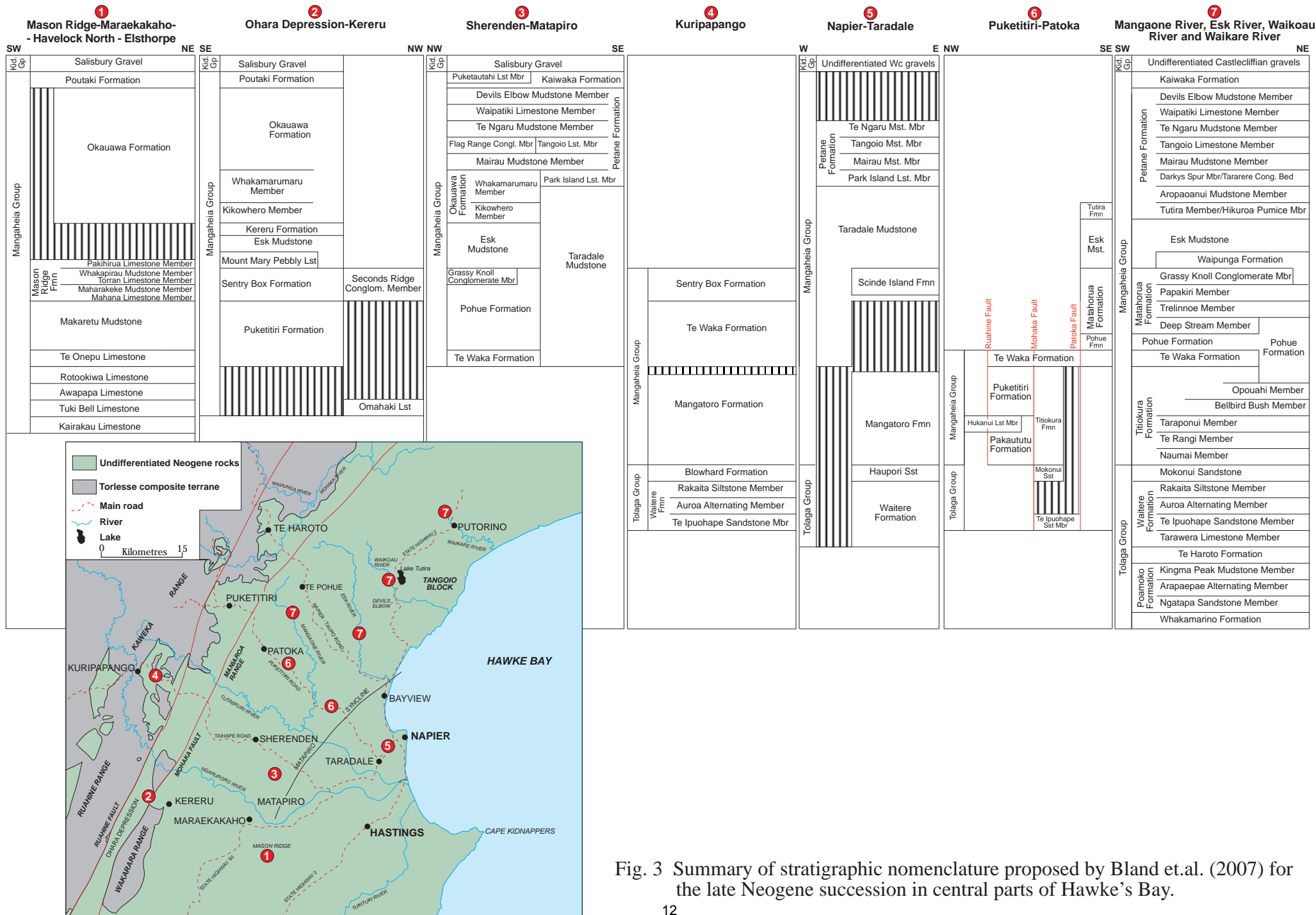


Fig. 3 Summary of stratigraphic nomenclature proposed by Bland et.al. (2007) for the late Neogene succession in central parts of Hawke's Bay.

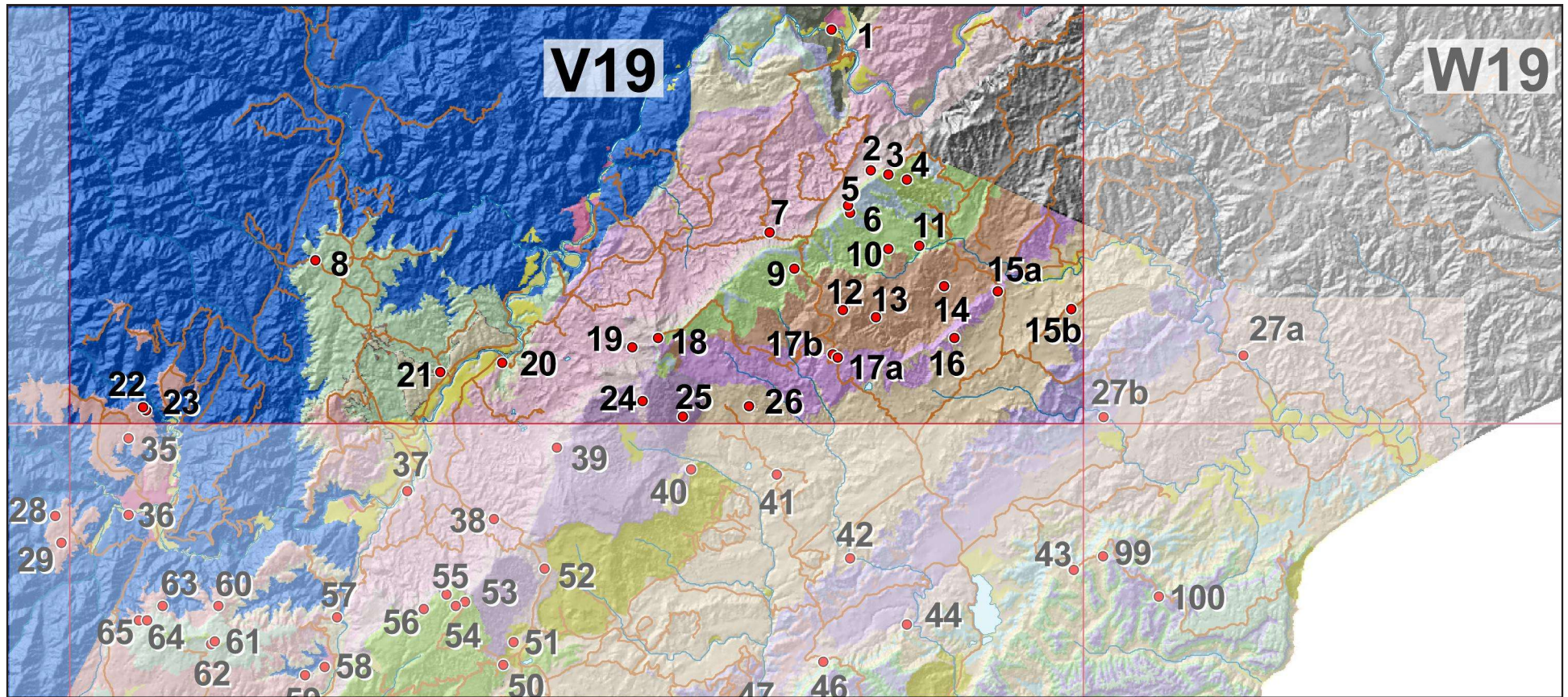


Fig. 4. Map showing location of stratigraphic columns within NZMS 260 Sheet V19.

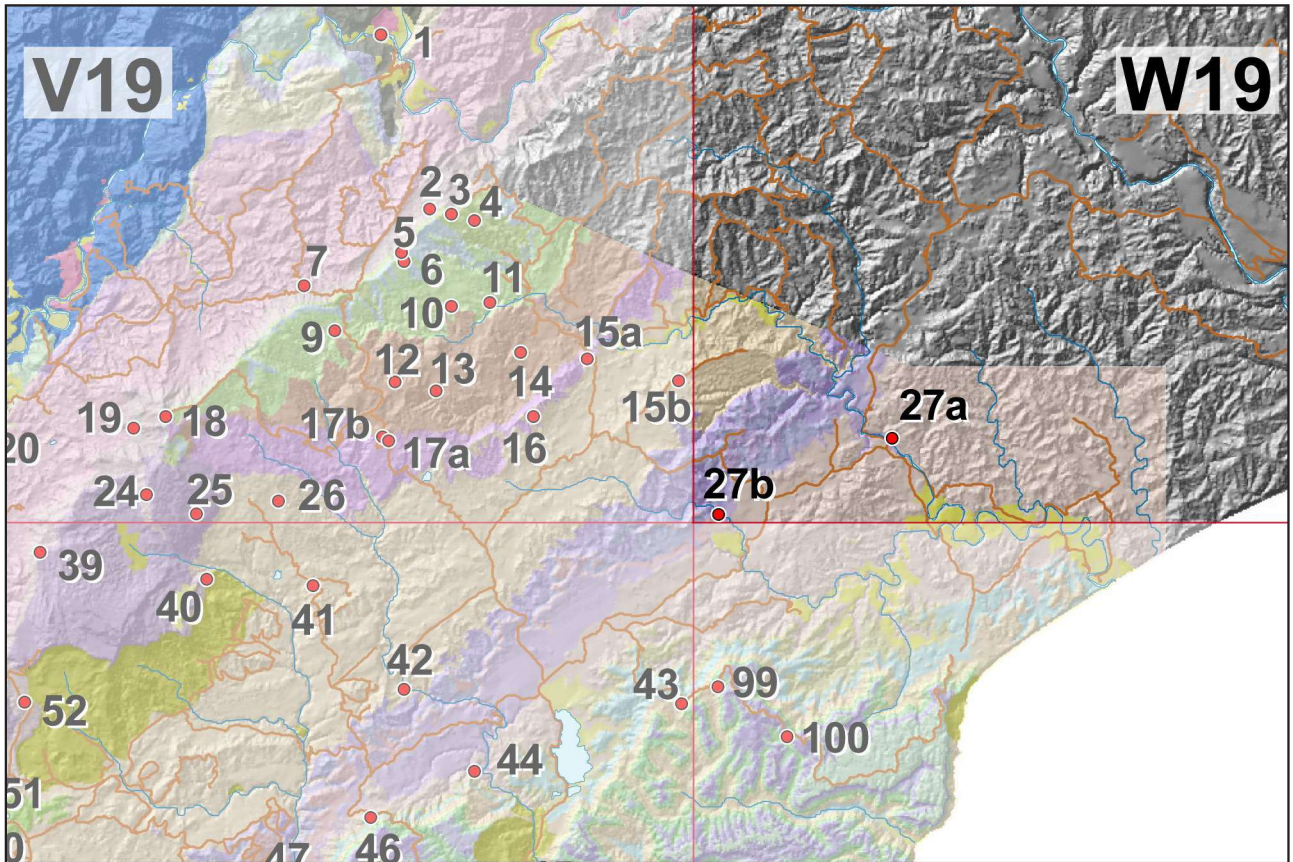


Fig. 5. Map showing location of stratigraphic columns within NZMS 260 Sheet W19.

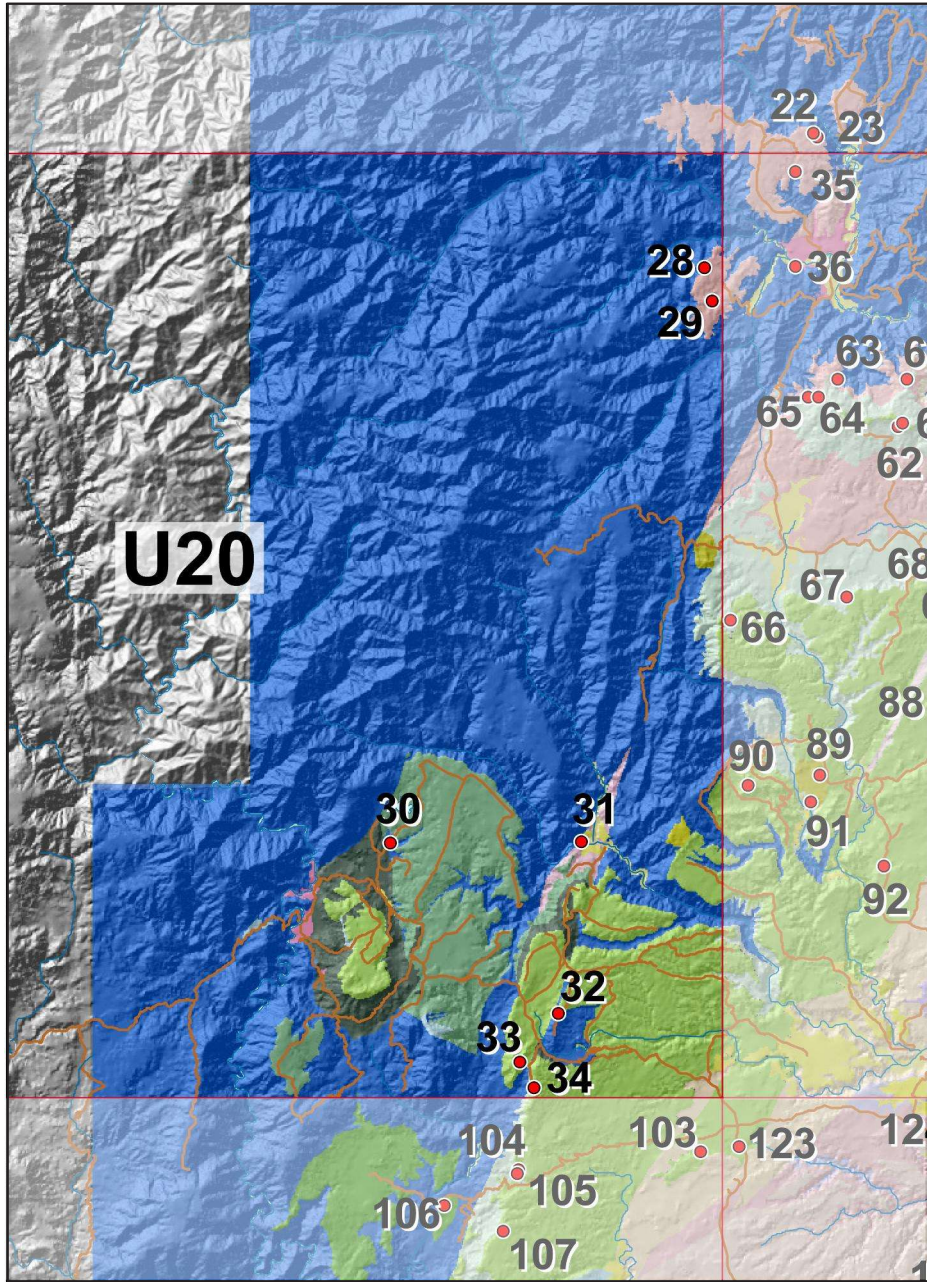


Fig. 6. Map showing location of stratigraphic columns within NZMS 260 Sheet U20

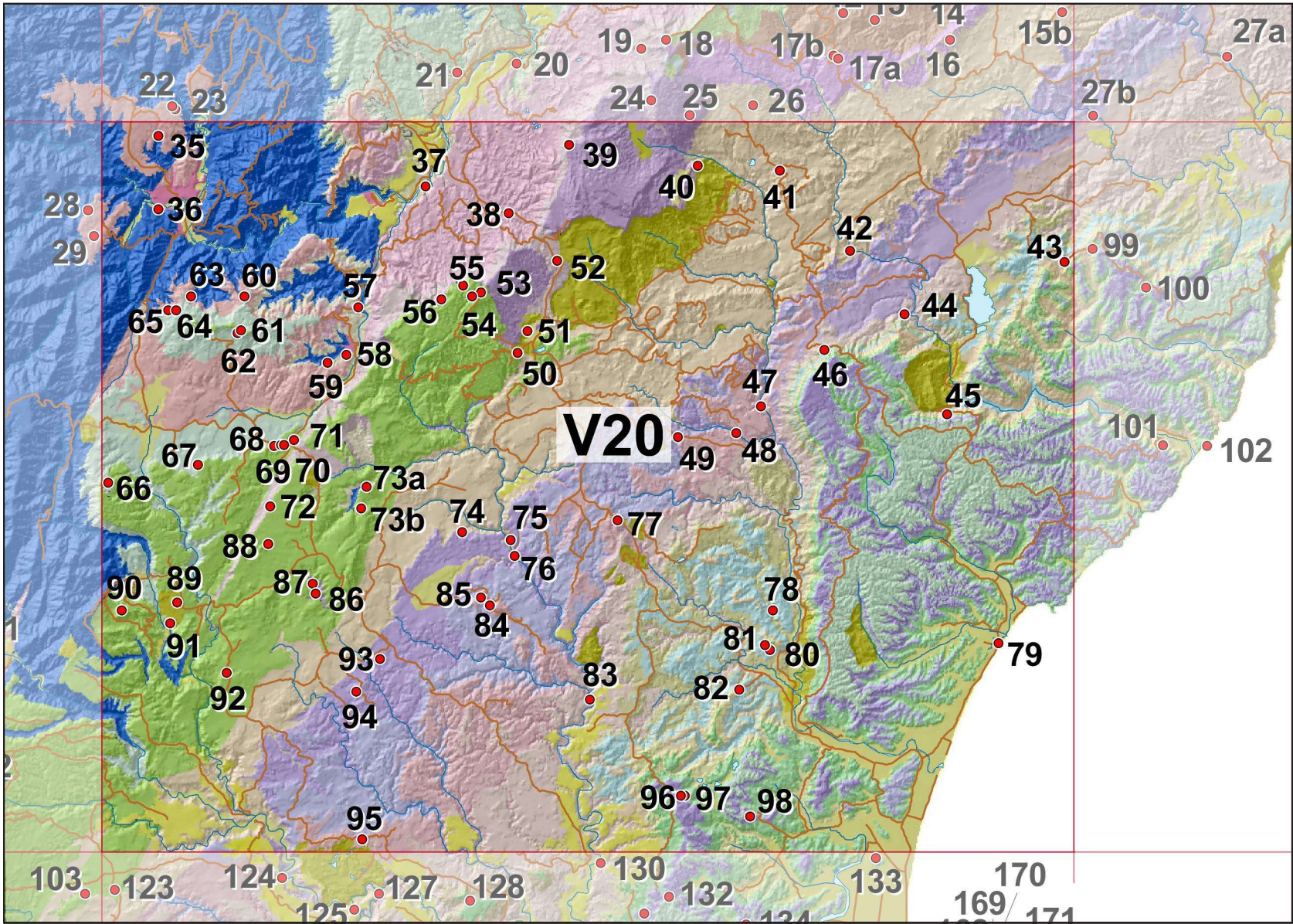


Fig. 7. Map showing location of stratigraphic columns within NZMS 260 Sheet V20.

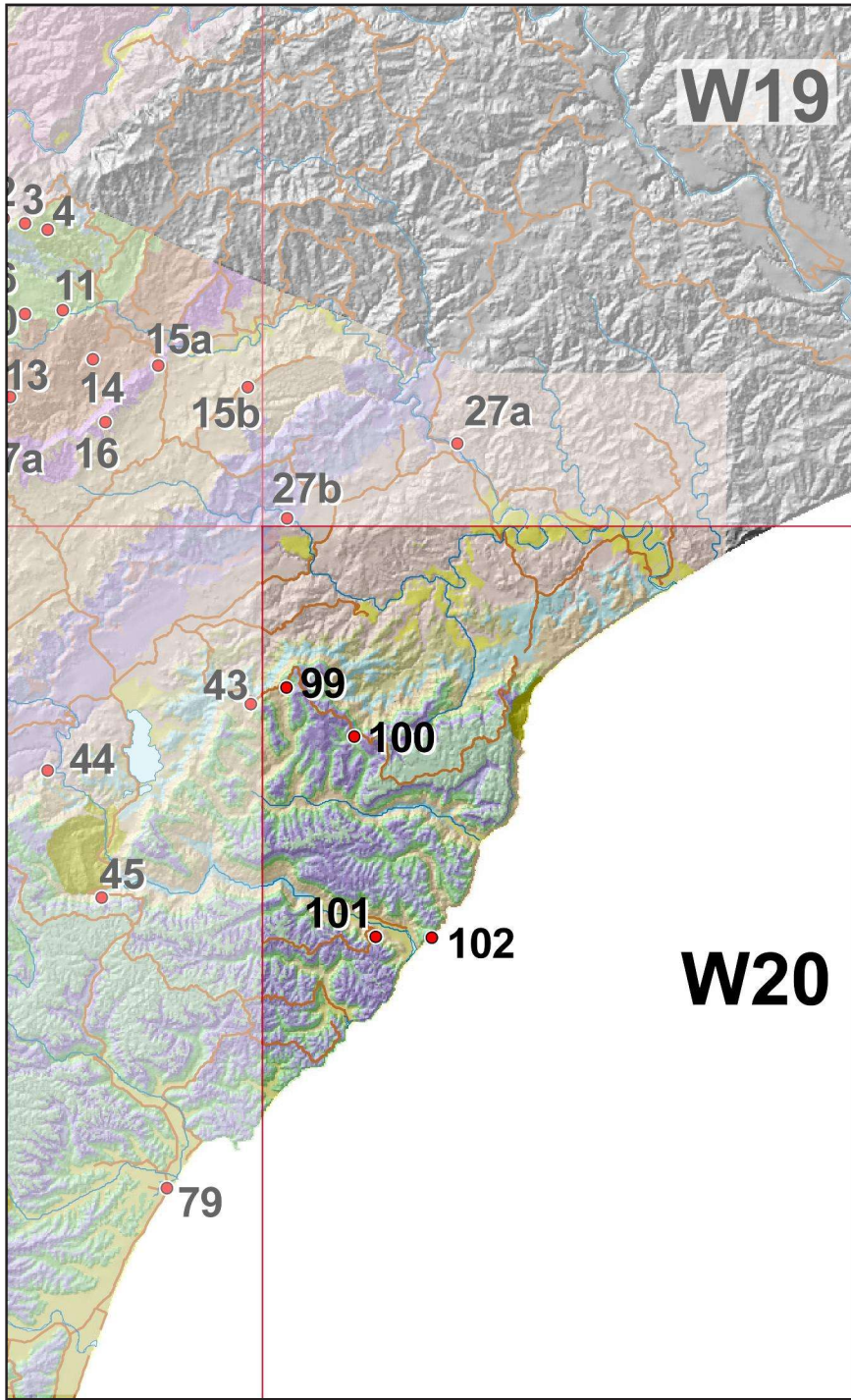


Fig. 8. Map showing location of stratigraphic columns within NZMS 260 Sheet W20

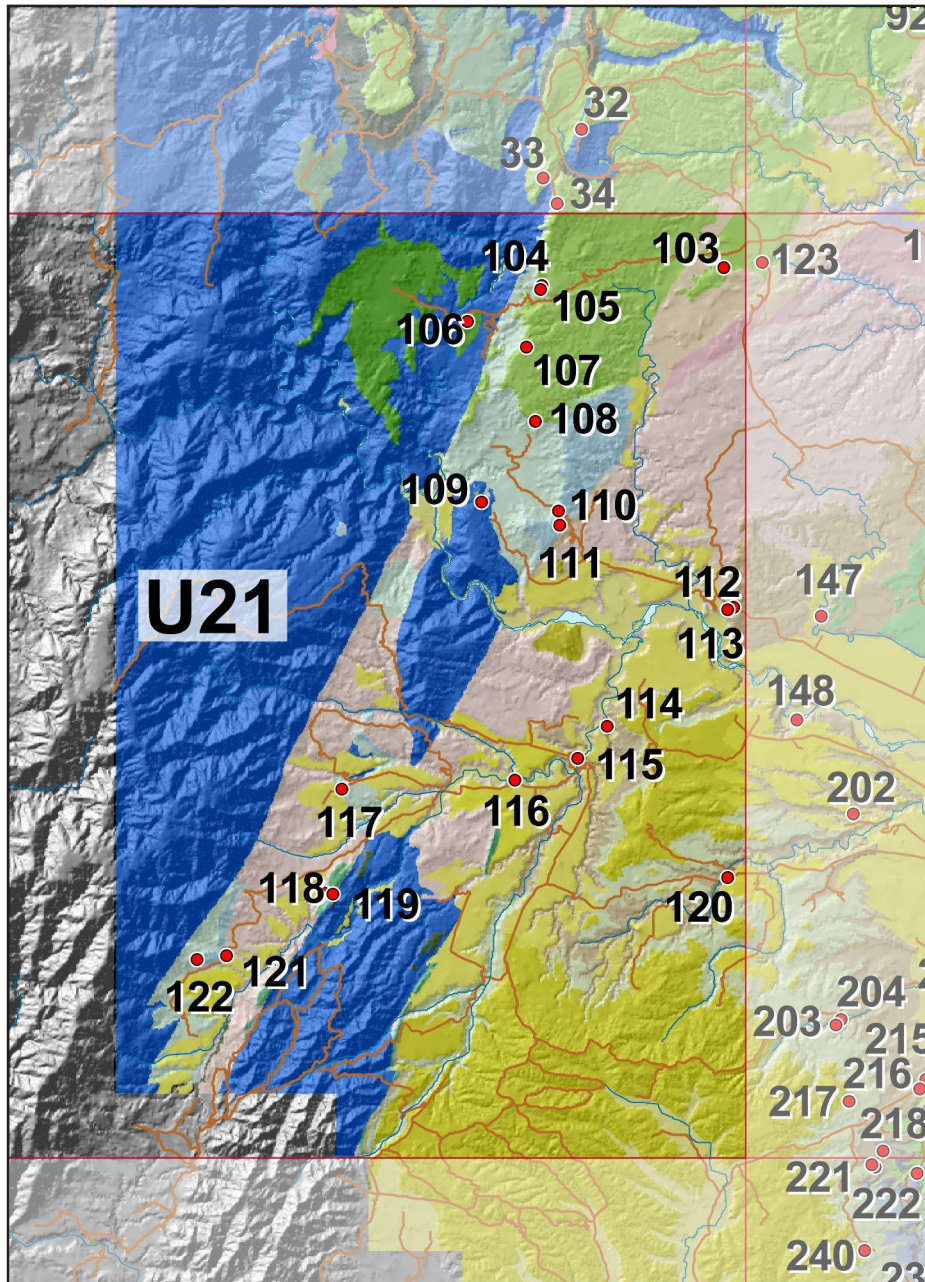


Fig. 9. Map showing location of stratigraphic columns within NZMS 260 Sheet U21.

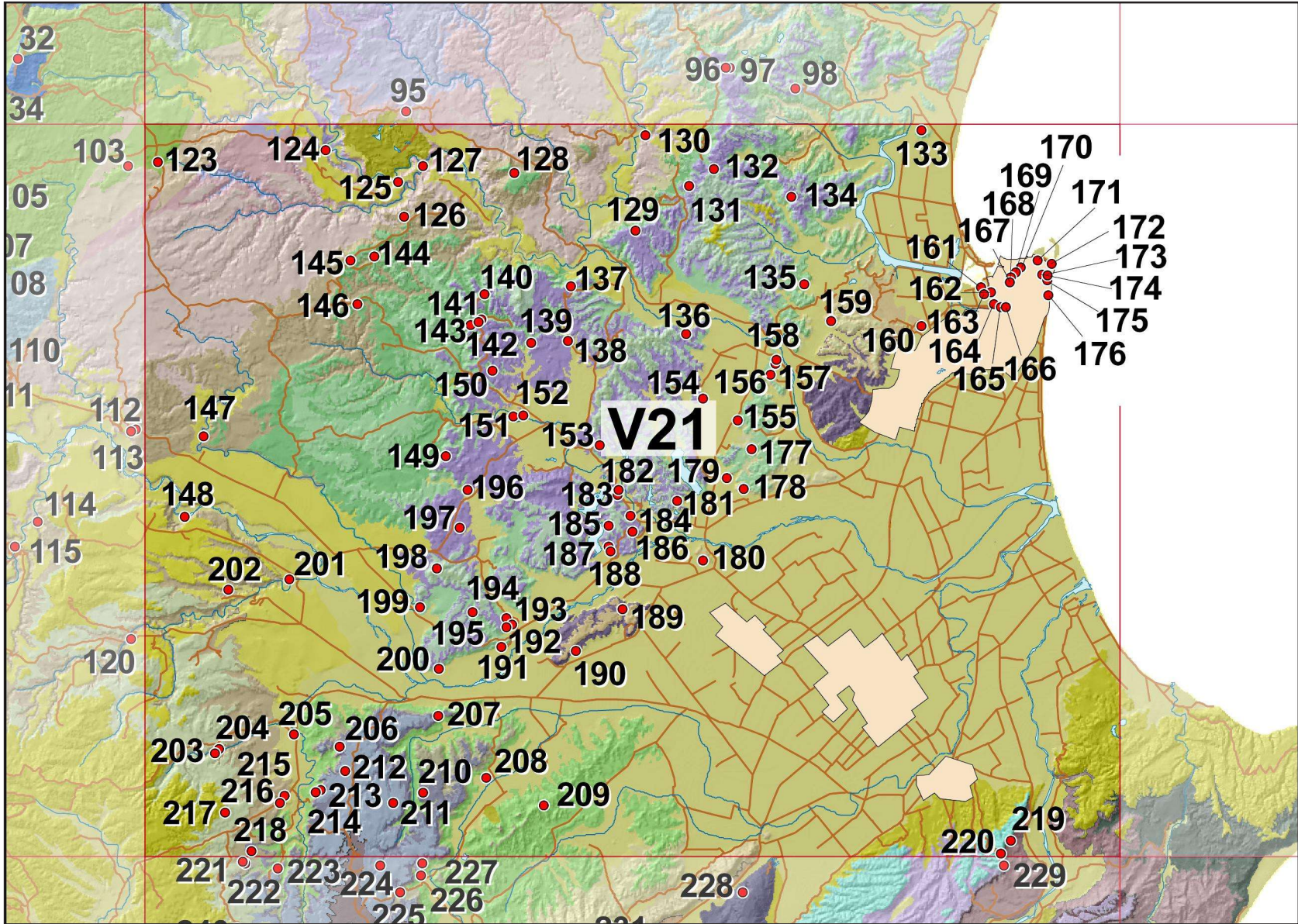


Fig. 10. Map showing location of stratigraphic columns within NZMS 260 Sheet V21.

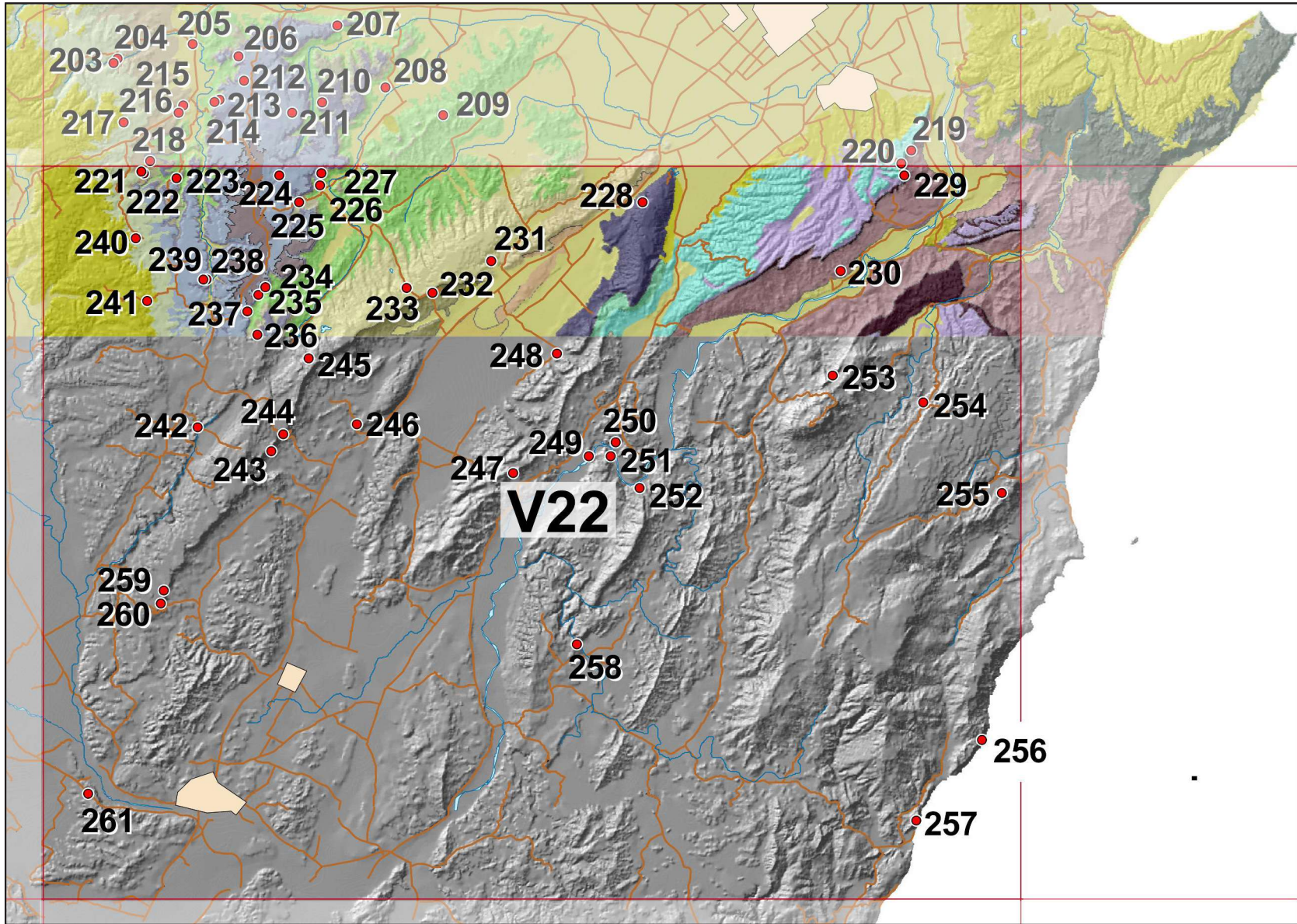


Fig. 11. Map showing location of stratigraphic columns within NZMS 260 Sheet V22.