



Strathprints Institutional Repository

Covvey, J. R. and Mullen, A. B. and Ryan, M. and Steinke, D. T. and Johnston, B. F. and Wood, F. T. and Boyter, A. C. (2014) A comparison of medication adherence/persistence for asthma and chronic obstructive pulmonary disease in the United Kingdom. International Journal of Clinical Practice, 68 (10). pp. 1200-1208. ISSN 1368-5031 , <http://dx.doi.org/10.1111/ijcp.12451>

This version is available at <http://strathprints.strath.ac.uk/50302/>

Strathprints is designed to allow users to access the research output of the University of Strathclyde. Unless otherwise explicitly stated on the manuscript, Copyright © and Moral Rights for the papers on this site are retained by the individual authors and/or other copyright owners. Please check the manuscript for details of any other licences that may have been applied. You may not engage in further distribution of the material for any profitmaking activities or any commercial gain. You may freely distribute both the url (<http://strathprints.strath.ac.uk/>) and the content of this paper for research or private study, educational, or not-for-profit purposes without prior permission or charge.

Any correspondence concerning this service should be sent to Strathprints administrator: strathprints@strath.ac.uk

1
2
3 **Title page**
4
5
6

7 **TITLE:**

8
9 A comparison of medication adherence/persistence for asthma and chronic
10 obstructive pulmonary disease in the United Kingdom
11
12

13
14
15
16 **AUTHORS:**

17
18 Jordan R Covvey, Pharm.D., BCPS (**submitting author**)

19
20 Ph.D. student; Strathclyde Institute of Pharmacy and Biomedical Sciences

21
22 University of Strathclyde; 161 Cathedral St

23
24 Glasgow G4 0RE, United Kingdom
25
26
27

28
29 Alexander B Mullen, B.Sc. (Hons) Pharm, Ph.D., MRPharmS

30
31 Professor; Strathclyde Institute of Pharmacy and Biomedical Sciences

32
33 University of Strathclyde; 161 Cathedral St

34
35 Glasgow G4 0RE, United Kingdom
36
37
38

39
40 Melody Ryan, Pharm.D., MPH, BCPS, CGP, FCCP, FAPhA

41
42 Associate Professor; Department of Pharmacy Practice and Science

43
44 University of Kentucky College of Pharmacy; 789 S. Limestone St

45
46 Lexington, KY 40536, United States
47
48
49
50
51
52
53
54
55
56
57
58
59
60

1
2
3 Douglas T Steinke, B.Sc. (Pharm), M.Sc., Ph.D., ARPharmS
4
5 Senior Lecturer; School of Pharmacy & Pharmaceutical Sciences
6
7 University of Manchester; Room 1.34 Stopford Building, Oxford Road
8
9
10 Manchester M13 9PT, United Kingdom
11

12
13
14 Blair F Johnston, Ph.D.
15
16 Senior Lecturer; Strathclyde Institute of Pharmacy and Biomedical Sciences
17
18 University of Strathclyde; 161 Cathedral St
19
20
21 Glasgow G4 0RE, United Kingdom
22

23
24
25 Fraser Wood, MBChB, MRCP
26
27 Respiratory Consultant Physician
28
29 Forth Valley Royal Hospital; Stirling Rd
30
31
32 Larbert FK5 4WR, United Kingdom
33

34
35
36 **Corresponding author:**

37
38 Anne C Boyter, Ph.D., MRPharmS
39
40 Senior Lecturer; Strathclyde Institute of Pharmacy and Biomedical Sciences
41
42 University of Strathclyde; 161 Cathedral St
43
44
45 Glasgow G4 0RE, United Kingdom
46
47 Email: anne.boyter@strath.ac.uk
48
49 Tel: +44 (0)141 548 4594
50
51
52 Fax: +44 (0)141 552 2562
53
54
55
56
57
58
59
60

DISCLOSURES :

JRC: financial support in the form of a Ph.D. studentship from the US-UK Fulbright

Commission and the University of Strathclyde

ABM: None to declare

MR: None to declare

DTS: None to declare

BFJ: None to declare

FW: meeting support from Novartis

ACB: meeting support from GlaxoSmithKline; member of the steering committee for the BTS/SIGN asthma guideline

1
2
3
4
5
6
7
8
9
10
11
12
13
14
15
16
17
18
19
20
21
22
23
24
25
26
27
28
29
30
31
32
33
34
35
36
37
38
39
40
41
42
43
44
45
46
47
48
49
50
51
52
53
54
55
56
57
58
59
60

Abstract

AIM: To describe and compare adherence and persistence with inhaled therapies in patients with asthma or COPD in the United Kingdom (UK).

METHODS: A retrospective prescribing database cohort was obtained from 44 general practitioner surgeries in NHS Forth Valley Scotland. Patients with physician-diagnosed asthma or COPD who received inhaled therapy between January 2008 and December 2009 were included. Four classes of inhaled therapy were assessed: inhaled corticosteroids; long-acting beta-agonists; combination therapy inhalers and; long-acting muscarinic antagonists. Adherence was calculated using the medication possession ratio (MPR) and persistence was determined using Kaplan-Meier survival analysis for the time to discontinuation (TTD) over one year. Two step-wise logistic regressions were performed to assess the contribution of diagnosis to adherence/persistence.

RESULTS: 12,923 patients were included in the analysis: 10,177 patients with asthma and 2,746 patients with COPD. 24.8% of medication episodes for asthma and 45.0% of medication episodes for COPD were classified as having an adequate medication supply (MPR of 80-120%). The overall median TTD was 90 days (IQR: 50-184 days) for patients with asthma and 115 days (58-258 days, comparison $p < 0.001$) for patients with COPD. Patients with COPD were found to be more likely to achieve an MPR of at least 80% (OR: 1.32, 95% CI: 1.20-1.46), but had a similar likelihood of persistence at one year to patients with asthma.

CONCLUSION: Adherence and persistence with respiratory therapies in the UK is relatively low. There is suggestion that patients with COPD may display more adherent behaviours than patients with asthma.

What is already known about this topic:

- Patients with respiratory disease are particularly likely to have poor adherence to medicines due to complex medication regimens and difficulty using inhaler devices.
- It is unknown whether patients with asthma and COPD have different medication use behaviours.

What this article adds:

- Adherence for maintenance inhaler therapies in respiratory disease is low, but higher among patients with COPD compared to patients with asthma.
- Less than 20% of patients in this UK cohort with respiratory disease remained persistent with inhaled therapy at one year.

Main text

INTRODUCTION:

Medication adherence refers to the degree to which a patient's medication-taking behaviour coincides with agreed medical advice, and largely has supplanted the term 'compliance,' which infers a clinician-directed therapy decision without patient input.[1] Medication persistence examines whether a patient follows the recommendation of continuing treatment for a prescribed length of time.[2] According to the World Health Organization (WHO), approximately half of patients across the world are non-adherent with treatment prescribed for chronic disease, leading to decreased treatment effectiveness, decreased patient quality of life, and increased healthcare costs.[1] As clinical research develops new therapies for patients with chronic disease it is important to identify and optimise medication taking behaviours.[3-4]

Treatment non-adherence in respiratory disease is particularly common. For patients with asthma, reported non-adherence rates range from 30-70%[5] and are thought to contribute significantly to the prevalence of severe refractory disease.[6] Most studies quantifying adherence in asthma have focused on children although adults are of equal concern as non-adherence occurs across all demographic categories.[7] In patients with chronic obstructive pulmonary disease (COPD), complex medication regimens and multiple comorbidities result in adherence rates of approximately 50%.[8] A lack of perceived benefit led to 30% of patients with COPD intentionally discontinuing their therapy in one analysis.[9] For both conditions, rates of non-

1
2
3 adherence reported in clinical trials are likely to be underestimated due to the type of
4 patients selected for trials and the influence of the trial environment itself.
5
6

7
8
9 Respiratory disease presents a unique challenge for patient adherence/persistence.
10
11 In addition to the common barriers that all patients with chronic disease face, a
12 number of device-related factors complicate the situation, including dislike of inhaled
13 formulations, improper inhaler technique, and need for additional equipment such as
14 spacers.[10] Of additional importance is how patients perceive their disease in terms
15 of severity and awareness,[11] which for respiratory disease – with a variable
16 symptom time course in asthma, and misunderstanding of disease symptoms as
17 ‘normal’ in COPD – is an important contributor.
18
19
20
21
22
23
24
25
26
27

28
29 Almost all available respiratory medications are utilised in the treatment of both
30 asthma and COPD. Accordingly, some studies have analysed adherence jointly
31 without regard to diagnosis,[12-13] despite the different pathology, symptoms and
32 management of each condition. To our knowledge, no single analysis has compared
33 the differences in respiratory medication utilisation between patients with asthma or
34 COPD, and accordingly, the aim of this study was to describe and compare
35 adherence and persistence with inhaled therapies for patients with physician-
36 diagnosed asthma and COPD in the United Kingdom (UK).
37
38
39
40
41
42
43
44
45
46
47
48

49 **METHODS:**

50 *Patients*

51
52 The present study is a retrospective database cohort analysis of prescribing data
53
54 from National Health Services (NHS) Forth Valley in Scotland. Data were provided
55
56
57
58
59
60

1
2
3 by the NHS Forth Valley Airways Managed Clinical Network in coordination with the
4
5 E-PRS clinical recording tool program (Campbell Software Solutions[®], Irvine, UK). E-
6
7 PRS was designed as a computer-integrated clinical audit program to improve
8
9 clinical care at practice level (described elsewhere[14]) but in short, collectively
10
11 formed a database of patients with physician-diagnosed asthma and/or COPD
12
13 treated in 44 general practitioner (GP) surgeries from 2007 to 2009. The reference
14
15 health board covers a geographic population of nearly 300,000 patients, while the
16
17 database contains information on approximately 22,000 distinct patients with
18
19 physician-diagnosed asthma/COPD. The departmental ethics group at the University
20
21 of Strathclyde determined no formal ethics review was needed for use of the dataset.
22
23
24
25
26

27 Patients (children and adults) included in the analysis had (1) a GP-recorded
28
29 diagnosis of asthma or COPD, and (2) at least one prescription issued for a
30
31 qualifying inhaled maintenance medication between January 1, 2008, and December
32
33 31, 2009 (the study period), including inhaled corticosteroids (ICS), long-acting beta
34
35 agonists (LABA), ICS/LABA combination therapy inhalers, or long-acting muscarinic
36
37 antagonists (LAMA). Patients were assessed separately by diagnosis, and patients
38
39 with a recorded dual-diagnosis of asthma and COPD were excluded from the
40
41 analysis. Demographic characteristics for each group were assessed, including age,
42
43 sex, maintenance medications received, and the proportion of patients who were
44
45 prescribed reliever medications (short-acting beta agonists [SABA] and oral
46
47 corticosteroids [OCS]) during the study period.
48
49
50
51
52
53

54 *Adherence*

55
56
57
58
59
60

1
2
3 Medication adherence was assessed by calculating the medication possession ratio
4 (MPR) for each class of maintenance therapy received. Similar to other
5 analyses,[12,15-16] MPR was calculated by summing the days of medication supply
6 provided and dividing by the total time treated:
7
8
9
10

$$\text{MPR} = \frac{\text{total days of medication supply}}{\text{days between first and last fills}} \times 100\%$$

11
12
13
14
15
16
17
18
19
20 Medication supply was calculated according to the posology and inhaler size (e.g.
21 60-dose inhaler with prescriptive instructions of 1 inhalation twice daily = 30 days
22 supply) for each prescription. A sequence of at least two prescriptions during the
23 two-year study period was required to calculate an MPR. The calculation was
24 specific to therapeutic class, but not to dose or individual pharmacological agent.
25 Thus, a patient receiving sequential treatment with two different ICS inhalers (e.g.
26 fluticasone switched to beclometasone) or having a change in the dose mid-therapy
27 would have a single MPR calculation. However, a single patient may have multiple
28 MPRs if they received medications from more than one therapeutic class, such as
29 treatment with an ICS changed to treatment with a combination therapy inhaler. After
30 individual MPRs were calculated for each patient and medication, they were
31 aggregated by therapeutic class: ICS, combination therapy inhalers, LABA (for
32 patients with asthma or COPD), and LAMA (only for patients with COPD). The use of
33 LAMA was not quantified for patients with asthma due to a lack of treatment
34 recommendation in prevailing clinical guidelines. The proportion of patients having
35 achieved an adequate medication supply, defined as an MPR between 80 and
36 120%,[17] was also determined; MPRs less than 80% or over 120% were defined as
37
38
39
40
41
42
43
44
45
46
47
48
49
50
51
52
53
54
55
56
57
58
59
60

undersupply or oversupply, respectively. The amount of SABA (in doses/day) prescribed during each MPR was also quantified. This was achieved by summing the number and size of SABA inhalers to determine the number of total SABA doses prescribed, and then dividing by the number of days over which the maintenance inhaler was prescribed (the denominator of the MPR calculation).

Persistence

Medication persistence was evaluated using a refill-sequence model and defined as the difference in time between the first prescribing of a medication during the study period and either the last prescribing, or an non-permissible gap in therapy (whichever occurred first).[18-19] A patient was considered to have an unacceptable gap if they failed to receive a prescription within 30 days after their previous medication supply was due to run out. Patients were also classified by whether they were on new or established therapy during the study period; patients were considered to be on 'new' therapy if they had no history of being prescribed an agent in the specified therapeutic class in the six months prior to the start of the study period. At least one prescription for a maintenance medication during the first year of the two-year study period was required to enable accurate calculation of a one-year persistence rate. Median time to discontinuation (TTD) for each patient by therapeutic class was calculated using a Kaplan-Meier survival analysis, with a time censor utilised at one year post-medication initiation.

Statistical analysis

Two binary logistic regression models were utilised to separately assess predictors of adherence and persistence. For adherence, the outcome of interest was

1
2
3 achievement of an MPR of at least 80% (including both adequate supply and
4
5 oversupply); this binary measure was chosen over a continuous measure since
6
7 oversupply does not confer any demonstrable therapeutic benefit over adequate
8
9 supply. For persistence, a *post hoc* consideration of the Kaplan-Meier results
10
11 suggested a non-proportionality of hazards over time; therefore, logistic regression
12
13 (with an outcome of interest of persistence past 100 days of therapy) was utilised
14
15 over a Cox regression analysis. Patient- and treatment-related variables of interest
16
17 (age, sex, diagnosis, therapeutic class of medication) were assessed first in
18
19 univariate fashion; SABA and OCS utilisation (doses/day and receipt [yes/no],
20
21 respectively) during the study period were also entered in adherence model to
22
23 include a measure of disease control, and classification of treatment as
24
25 new/established therapy was utilised in the persistence model. Significant variables
26
27 from the univariate analysis were filtered into the final forward stepwise multivariate
28
29 models, with α set at 0.05 for entry and 0.10 for removal. Results were reported with
30
31 odds ratios (OR) and 95% confidence intervals (CI).
32
33
34
35
36
37

38 Minitab[®] 16 statistical software (Minitab Ltd., Coventry, UK) was used for analysis. A
39
40 Mann-Whitney test was used to compare differences between continuous measures
41
42 (median age, median doses/day of SABA), while chi-squared tests were used to
43
44 assess categorical differences (demographics, classification of medication supply). A
45
46 Wilcoxon test was used to test for differences in persistence as assessed by the
47
48 Kaplan-Meier analysis. A Bonferroni correction was applied to minimise error
49
50 resulting from multiple comparisons when appropriate.
51
52
53
54

55 56 **RESULTS:** 57 58 59 60

Patient characteristics

A total of 12,923 patients were included in the analysis, 10,177 patients with asthma and 2,746 patients with COPD (**Table 1**). Patients with asthma were more likely to be female, and the median age of patients was predictably younger and more variable than those with COPD. More patients with asthma (8873; 87.2%) than with COPD (2746; 65.4%) were treated with a single therapeutic class of medication during the study period ($p < 0.001$). Patients with either disease were prescribed SABA in similar proportions, although the use of OCS was greater among those with COPD. A total of 17,354 episodes of maintenance medication use were assessed: 11,618 for asthma patients and 5,736 for COPD patients.

Medication adherence

Overall 24.8% (95% confidence interval [CI]: 24.0-25.6%) of medication episodes for asthma and 45.0% (95% CI: 43.7-46.3%) of medication episodes for COPD were classified as an adequate supply ($p < 0.001$ for comparison). The proportion of patients with an adequate MPR also varied according to therapeutic class (**Table 2**). Adequate supply was highest for LAMA inhalers in patients with COPD at 52.2%; patients with COPD had higher incidence of adequate supply and lower incidence of undersupply for all three therapeutic classes available for comparison. Undersupply accounted for approximately one-third to one-half of all episodes, with all therapies for patients with asthma having an undersupply rate of greater than 50%. Oversupply of medication was particularly common for prescribing of ICS in both diseases, at 27.0% for asthma and 34.8% for COPD.

1
2
3
4
5 In the logistic regression for adherence, both male sex and increasing age were
6 associated with higher odds of achieving an MPR of at least 80% (**Table 3**). Both a
7 diagnosis of COPD and treatment with LAMA were associated with higher odds,
8 although these effects were softened in the multivariate analysis with inclusion of
9 other variables. The number of doses/day of SABA prescribed during the study
10 period increased alongside MPR, with each additional dose/day correlating to an
11 11% increase in the odds of achieving an adequate MPR; receiving a prescription for
12 OCS was also associated with an increased odds of an adequate MPR, although this
13 effect failed to meet significance for inclusion in the multivariate model.
14
15
16
17
18
19
20
21
22
23
24
25
26

27 **Medication persistence**

28
29
30
31 For asthma, the overall median TTD was 90 days (IQR: 50-184 days) and for COPD,
32 the overall median TTD was 115 days (IQR: 58-258, comparison $p < 0.001$); the
33 percentage of patients persisting at one year was 11% and 16% for asthma and
34 COPD, respectively (**Figure 1**). Persistence by therapeutic class was greater for
35 patients with COPD than asthma for both LABA (96 vs. 61 days, $p = 0.008$) and
36 combination inhalers (116 vs. 85 days, $p < 0.001$), but similar for ICS (101 vs. 100
37 days). The highest persistence overall was seen for LAMA inhalers in COPD, with a
38 median TTD of 123 days and 18% of patients persisting after one year.
39
40
41
42
43
44
45
46
47
48
49
50

51
52 In the logistic regression for persistence, male sex and age were associated with
53 higher odds of persisting past 100 days of therapy (**Table 4**). Therapy with a LAMA
54 or ICS produced the similarly highest odds among therapeutic classes, but diagnosis
55
56
57
58
59
60

1
2
3 failed to meet significance for inclusion in the final model. Newly initiated therapy
4
5 was associated with 19% lower odds of persisting past 100 days, compared to
6
7 patients on already established therapy.
8
9

10 11 **DISCUSSION:**

12
13
14
15
16 The current analysis demonstrates a relatively low rate of adherence/persistence for
17
18 inhaled therapies for the treatment of respiratory disease, and reveals that among
19
20 use of the same medications, patients with asthma and COPD display different
21
22 medication use behaviour.
23
24

25
26
27 Less than one-quarter of patients with asthma and less than one-half of patients with
28
29 COPD were classified as having an adequate medication supply. Other studies using
30
31 administrative dispensing databases have demonstrated similar rates to those found
32
33 in this prescribing analysis.[12-13,15-16,20-21] However, to the best of our
34
35 knowledge, no single analysis has demonstrated enhanced adherence among
36
37 patients with COPD for the same inhaled therapies within an adjusted analysis.
38
39 There is evidence that patients with COPD display more adherent behaviours as
40
41 they age,[22] and similarly our analysis found that age over 40 years is an
42
43 independent contributor to having an adequate medication supply. However, older
44
45 patients also face unique barriers that complicate medication adherence and may
46
47 not be captured with prescribing data, including cognitive decline, lack of dexterity
48
49 and polypharmacy.[23] Patients with COPD may also experience more consistent
50
51 and severe disease symptomology, and may be inclined to be more adherent than
52
53 patients with asthma. Although the inclusion of patients prescribed more than
54
55
56
57
58
59
60

1
2
3 reliever therapy would presume that the population studied had a chronic form of
4
5 asthma, the natural episodic time course of patient symptoms in asthma may have
6
7 resulted in sporadic treatment periods interlaced with drug-free intervals, rendering a
8
9 lower level of overall adherence.
10

11
12
13
14 Adherence to prescribed therapy has been shown to have an association with
15
16 disease outcomes in respiratory disease, resulting in lower rates of emergency room
17
18 visits and hospitalisations.[24-26] Other measures of disease control, such as
19
20 exacerbation rates, may be less sensitive and require high levels of adherence to
21
22 provide noticeable improvement.[27] Our multivariate analysis found that patients
23
24 with higher level prescribing of SABA reliever therapy were more likely to have
25
26 higher level prescribing of their maintenance therapy, a relationship that has been
27
28 detected previously.[15,28] It may be expected that a high use of reliever therapy
29
30 should correspond with poor adherence to maintenance therapy; accordingly, it has
31
32 been suggested previously that symptomatic patients may have a weaker sense of
33
34 control and ownership of their illness, resulting in lower motivation and overall
35
36 medication adherence.[29] However, the direction of causation in the relationship
37
38 between reliever and maintenance therapy is unclear, as patients who are
39
40 symptomatic as defined by increased use of reliever therapy may be inclined to
41
42 develop better adherence to their maintenance therapy.[1] The perceived necessity
43
44 of a medication by the patient has also been shown to correlate with adherence[29]
45
46 and the relative severity of the disease consequences[11,30] may further complicate
47
48 the situation.
49
50
51
52
53
54
55
56
57
58
59
60

1
2
3 More than 80% of patients failed to remain on prescribed therapy at 12 months post-
4 initiation, not unlike an analysis of Canadian claims data that found a range of 47 –
5 93% for non-persistence at one year among inhaled therapies.[31] Medication
6 persistence calculations are sensitive to how stringent the definition is for an
7 allowable medication gap. The current analysis set this threshold at 30 days; a *post*
8 *hoc* sensitivity analysis extending this gap to 60 days increased the overall median
9 TTD to 114 days (20% persisting at one year) for asthma and 152 days (22%
10 persisting at one year) for COPD, respectively (data not shown). Despite these
11 results, the enhanced effect of COPD diagnosis seen in the regression for
12 adherence failed to replicate in the regression for persistence. Medication
13 persistence is not only a measure of long-term adherence, but also of treatment
14 stability, as the TTD may be influenced by patients with therapy changes, such as for
15 patients with asthma ‘stepping up’ from ICS therapy alone to ICS/LABA combination
16 inhaler therapy. The percentage of patients treated with more than one class of
17 maintenance therapy was significantly higher among patients with COPD than with
18 asthma and likely softened the effect of both COPD diagnosis and treatment with
19 LAMA in the multivariate regression for persistence – both variables that were
20 significant on a univariate basis, and significant within the adherence regression. The
21 shape of persistence curves and the further lessened persistence among patients
22 with newly initiated therapy suggests that the overall low persistence is primarily
23 influenced by the large drop-off of patients early in therapy, often after the first
24 couple of prescriptions. Accordingly, initiation of therapy appears to be an
25 appropriate target for promoting good medicine use in patients with respiratory
26 disease. Although no single set of interventions has been successful in consistently
27
28
29
30
31
32
33
34
35
36
37
38
39
40
41
42
43
44
45
46
47
48
49
50
51
52
53
54
55
56
57
58
59
60

1
2
3 improving adherence, [3] our results would suggest that research should focus
4
5 efforts during the first three months of therapy.
6
7

8
9
10 Among the inhaled therapies assessed, LAMAs were associated with the best
11 adherence/persistence, which may be a function of the increased convenience of
12 once-daily dosing.[32] Medication adherence is known to decrease as dosing
13 frequency increases,[33] and all other therapies in the present analysis have a
14 standard twice-daily dosing regimen. Therapy with an ICS had the lowest percentage
15 of patients (with either disease) identified as having an adequate level of medication
16 supply (MPR 80-120%), but was also found to have a comparatively high rate of
17 adherence/persistence in the regression analyses. For adherence, this was likely
18 influenced by the inclusion of oversupply in the binary outcome, but for persistence,
19 the reasons are less clear. There may have been some influence of inhaler size on
20 the results, as most available combination therapy inhalers and LABAs are packaged
21 in 60-dose or 120-dose units, largely corresponding to a 30-day supply per inhaler.
22
23 However, the most commonly utilised ICSs in this analysis are supplied in 200-dose
24 units, which may correspond to as much as a 100-day supply for a single inhaler.
25
26 This may have led to higher odds of persistence for ICS within our calculations, as a
27 single prescribing event provides a longer medication supply. An additional point to
28 consider is the effect that ICS dose titration may have on adherence and
29 persistence. It is possible that clinicians may initially prescribe a higher dose of ICS
30 (or a higher number of puffs from an inhaler) which is then scaled back based on the
31 patient's symptoms; this may explain some variation in the results.
32
33
34
35
36
37
38
39
40
41
42
43
44
45
46
47
48
49
50
51
52
53
54
55
56
57
58
59
60

1
2
3 There are several limitations with the current study. All database studies estimate
4 adherence/persistence as it is not always feasible to obtain serum drug
5 concentrations or individually assess patients in large numbers. Access to
6 medication is used as a proxy for adherence in this study and thus we are unable to
7 discern whether the patient actually takes the medication or if he/she uses an inhaler
8 device correctly; therefore, by definition the results are ceiling estimates.

9
10 Furthermore, the current study used prescribing data obtained from the GP.

11 Prescriptions are generally written for an initial supply, and a patient only continues
12 therapy by obtaining a new prescription, either by visiting the GP themselves, or
13 more commonly through a 'managed repeat' service where the pharmacist
14 communicates with the GP for further supply. While the first prescription is initiated
15 by the GP, there is a great degree of patient-initiated action required for follow-up
16 supply, which may influence the large-drop off seen early in therapy. Similarly,
17 hospitalisations, particularly for patients with COPD may lead to changes or
18 disruptions in therapy that effect the calculations. Lastly, the regression models
19 provide an indication of the variables when considered together, but indicate (via the
20 c-statistic) that other variables that were unable to be accounted for within this
21 analysis likely have an effect on the outcome; however, this modest fit is a common
22 finding among adherence studies.[34] In particular, in a prescribing database, we
23 were unable to correlate the results of the regression with clinical outcomes, such as
24 hospitalisations and overall disease control. However, we attempted to include a
25 proxy for symptoms by quantifying SABA and OCS utilisation among patients.

26
27
28
29
30
31
32
33
34
35
36
37
38
39
40
41
42
43
44
45
46
47
48
49
50
51
52
53
54 In conclusion, adherence and persistence with respiratory therapies in this UK cohort
55 was relatively low. There is indication that patients with COPD may display more

1
2
3 adherent behaviours than their counterparts with asthma. Efforts to increase
4
5 medication persistence should likely be targeted to focus follow-up efforts during the
6
7 first months of therapy.
8
9

10 11 **ACKNOWLEDGEMENTS:**

12
13 The authors thank the NHS Forth Valley Airways Managed Clinical Network for the
14
15 provision of data for this analysis. Funding was provided in the form of a Ph.D.
16
17 studentship for JRC jointly by the US-UK Fulbright Commission and the University of
18
19 Strathclyde. The funder had no involvement in any aspect of the study or manuscript.
20
21
22
23

24 25 **AUTHOR CONTRIBUTIONS:**

26
27 JRC and ABM came up with the concept and designed the study. JRC, BFJ, ABM
28
29 and DTS analysed the study data. ACB, FW and MR interpreted the results. JRC
30
31 drafted the manuscript, and all authors critically reviewed and approved the
32
33 manuscript. ACB is the guarantor.
34
35
36
37
38
39
40
41
42
43
44
45
46
47
48
49
50
51
52
53
54
55
56
57
58
59
60

REFERENCES:

1. World Health Organization (WHO). *Adherence to long-term therapies: evidence for action*. 2003. Available at:
http://www.who.int/chp/knowledge/publications/adherence_full_report.pdf
[accessed 12 Feb 2013]
2. Cramer JA, Roy A, Burrell A, Fairchild CJ, Fuldeore MJ, Ollendorf DA, Wong PK. Medication compliance and persistence: terminology and definitions. *Value Health* 2008;11:44-7.
3. Haynes RB, Ackloo E, Sahota N, McDonald HP, Yao X. Interventions for enhancing medication adherence. *Cochrane Database Syst Rev*. 2008;16:CD000011.
4. DiMatteo MR. Variations in patients' adherence to medical recommendations: a quantitative review of 50 years of research. *Med Care* 2004 Mar;42: 200-9.
5. Bender B, Milgrom H, Rand C. Nonadherence in asthmatic patients: is there a solution to the problem? *Ann Allergy Asthma Immunol* 1997;79:177-85.
6. Gamble J, Stevenson M, McClean E, Heaney LG. The prevalence of nonadherence in difficult asthma. *Am J Respir Crit Care Med* 2009;180:817-22.
7. Horne R. Compliance, adherence, and concordance: implications for asthma treatment. *Chest* 2006;130:65S-72S.
8. Bourbeau J, Bartlett SJ. Patient adherence in COPD. *Thorax* 2008;63:831-8.
9. Laforest L, Denis F, Van Ganse E, Ritleng C, Saussier C, Passante N, Devouassoux G, Chatté G, Freymond N, Pacheco Y. Correlates of adherence to respiratory drugs in COPD patients. *Prim Care Respir J* 2010;19:148-54.

- 1
2
3 10. Restrepo RD, Alvarez MT, Wittnebel LD, Sorenson H, Wettstein R, Vines
4 DL, Sikkema-Ortiz J, Gardner DD, Wilkins RL. Medication adherence issues in
5 patients treated for COPD. *Int J Chron Obstruct Pulmon Dis* 2008;3:371-84.
6
7
- 8
9 11. DiMatteo MR, Haskard KB, Williams SL. Health beliefs, disease severity, and
10 patient adherence: a meta-analysis. *Med Care* 2007;45:521-8.
11
- 12 12. Krigsman K, Moen J, Nilsson JL, Ring L. Refill adherence by the elderly for
13 asthma/chronic obstructive pulmonary disease drugs dispensed over a 10-year
14 period. *J Clin Pharm Ther* 2007;32:603-11.
15
16
- 17 13. Haupt D, Krigsman K, Nilsson JL. Medication persistence among patients with
18 asthma/COPD drugs. *Pharm World Sci* 2008;30:509-14.
19
20
- 21 14. Covvey JR, Johnston BF, Wood F, Boyter AC. Is the BTS/SIGN guideline
22 confusing? A retrospective database analysis of asthma therapy. *Prim Care
23 Respir J* 2013;22:290-5.
24
25
- 26 15. Elkout H, Helms PJ, Simpson CR, McLay JS. Adequate levels of adherence
27 with controller medication is associated with increased use of rescue
28 medication in asthmatic children. *PLoS One* 2012;7:e39130.
29
30
- 31 16. Haupt D, Nilsson JL. Asthma medication - persistence with adrenergics,
32 steroids and combination products over a 5-year period. *J Clin Pharm Ther*
33 2009;34:507-13.
34
35
- 36 17. Krigsman K, Nilsson JLG, Ring L. Refill adherence for patients with asthma and
37 COPD: comparison of a pharmacy record database with manually collected
38 repeat prescriptions. *Pharmacoepidemiol Drug Saf* 2007; 16: 441–448.
39
40
- 41 18. Andrade SE, Kahler KH, Frech F, Chan KA. Methods for evaluation of
42 medication adherence and persistence using automated databases.
43
44
45
46
47
48
49
50
51
52
53
54
55
56
57
58
59
60

- 1
2
3 19. Sikka R, Xia F, Aubert RE. Estimating medication persistency using
4 administrative claims data. *Am J Manag Care* 2005;11:449-57.
5
6
7 20. Jung E, Pickard AS, Salmon JW, Bartle B, Lee TA. Medication adherence and
8 persistence in the last year of life in COPD patients. *Respir Med* 2009;103:525-
9 34.
10
11
12 21. Bender BG, Pedan A, Varasteh LT. Adherence and persistence with fluticasone
13 propionate/salmeterol combination therapy. *J Allergy Clin Immunol*
14 2006;118:899-904.
15
16
17 22. Rand CS, Nides M, Cowles MK, Wise RA, Connett J. Long-term metered-dose
18 inhaler adherence in a clinical trial. The Lung Health Study Research Group.
19 *Am J Respir Crit Care Med* 1995;152:580-8.
20
21
22 23. Gellad WF, Grenard JL, Marcum ZA. A systematic review of barriers to
23 medication adherence in the elderly: looking beyond cost and regimen
24 complexity. *Am J Geriatr Pharmacother* 2011;9:11-23.
25
26
27 24. Murphy AC, Proeschal A, Brightling CE, Wardlaw AJ, Pavord I, Bradding
28 P, Green RH. The relationship between clinical outcomes and medication
29 adherence in difficult-to-control asthma. *Thorax* 2012;67:751-3.
30
31
32 25. Williams LK, Pladevall M, Xi H, Peterson EL, Joseph C, Lafata JE, Ownby
33 DR, Johnson CC. Relationship between adherence to inhaled corticosteroids
34 and poor outcomes among adults with asthma. *J Allergy Clin*
35 *Immunol* 2004;114:1288-93.
36
37
38 26. Simoni-Wastila L, Wei YJ, Qian J, Zuckerman IH, Stuart B, Shaffer T, Dalal
39 AA, Bryant-Comstock L. Association of chronic obstructive pulmonary disease
40 maintenance medication adherence with all-cause hospitalization and spending
41 in a Medicare population. *Am J Geriatr Pharmacother* 2012;10:201-10.
42
43
44
45
46
47
48
49
50
51
52
53
54
55
56
57
58
59
60

LL

- 1
2
3 27. Williams LK, Peterson EL, Wells K, Ahmedani BK, Kumar R, Burchard EG,
4
5 Chowdhry VK, Favro D, Lanfear DE, Pladevall M. Quantifying the proportion of
6
7 severe asthma exacerbations attributable to inhaled corticosteroid
8
9 nonadherence. *J Allergy Clin Immunol* 2011;128:1185-1191.e2.
10
11
12 28. Walders N, Kopel SJ, Koinis-Mitchell D, McQuaid EL. Patterns of quick-relief
13
14 and long-term controller medication use in pediatric asthma. *J*
15
16 *Pediatr* 2005;146:177-82.
17
18 29. Horne R, Weinman J. Patients' beliefs about prescribed medicines and their
19
20 role in adherence to treatment in chronic physical illness. *J Psychosom*
21
22 *Res* 1999;47:555-67.
23
24 30. Kucukarslan SN. A review of published studies of patients' illness perceptions
25
26 and medication adherence: lessons learned and future directions. *Res Social*
27
28 *Adm Pharm* 2012;8:371-82.
29
30 31. Cramer JA, Bradley-Kennedy C, Scaleria A. Treatment persistence and
31
32 compliance with medications for chronic obstructive pulmonary disease. *Can*
33
34 *Respir J* 2007;14:25-9.
35
36 32. Breekveldt-Postma NS, Koerselman J, Erkens JA, Lammers JW, Herings RM.
37
38 Enhanced persistence with tiotropium compared with other respiratory drugs in
39
40 COPD. *Respir Med* 2007;101:1398-405.
41
42 33. Coleman CI, Limone B, Sobieraj DM, Lee S, Roberts MS, Kaur R, Alam T.
43
44 Dosing frequency and medication adherence in chronic disease. *J Manag Care*
45
46 *Pharm* 2012;18:527-39.
47
48 34. Zeber JE, Manias E, Williams AF, Hutchins D, Udezi WA, Roberts
49
50 CS, Peterson AM; ISPOR Medication Adherence Good Research Practices
51
52 Working Group. A systematic literature review of psychosocial and behavioral
53
54
55
56
57
58
59
60

1
2
3 factors associated with initial medication adherence: a report of the ISPOR
4
5 medication adherence & persistence special interest group. *Value*
6
7 *Health* 2013;16:891-900.
8
9
10
11
12
13
14
15
16
17
18
19
20
21
22
23
24
25
26
27
28
29
30
31
32
33
34
35
36
37
38
39
40
41
42
43
44
45
46
47
48
49
50
51
52
53
54
55
56
57
58
59
60

For Peer Review Only

Table 1: Patient characteristics

| <i>n (%) unless otherwise stated</i> | Asthma (n=10,177) | COPD (n=2746) |
|--------------------------------------|-----------------------------|-------------------------|
| Male sex | 4317 (42.4) | 1367 (49.8) ‡ |
| Median age, years (IQR) | 41 (22 – 57) | 70 (63 – 77) ‡ |
| < 20 years | 2204 (21.7) | 0 (0) |
| 20-39 years | 2561 (25.2) | 7 (0.3) |
| 40-59 years | 3235 (31.8) | 418 (15.2) |
| 60-80 years | 1900 (18.7) | 1853 (67.5) |
| ≥ 80 years | 277 (2.7) | 468 (17.0) |
| Therapies received | | |
| ICS | 6520 (64.1) | 682 (24.8) ‡ |
| CMB | 4087 (40.2) | 1504 (54.8) ‡ |
| LABA | 874 (8.6) | 274 (10.0) † |
| LAMA | N/A | 1736 (63.2) |
| Received SABA | 9456 (92.9) | 2534 (92.3) |
| Received OCS | 2426 (23.8) | 1179 (42.9) ‡ |

CMB: combination therapy inhaler; COPD: chronic obstructive pulmonary disease; ICS: inhaled corticosteroid; IQR: interquartile range; n: number; LABA: long-acting beta-agonist; LAMA: long-acting muscarinic antagonist; OCS: oral corticosteroids; SABA: short-acting beta agonists

† indicates $p < 0.05$ for comparison with asthma group

‡ indicates $p < 0.001$ for comparison with asthma group

Table 2: Medication supply as assessed by MPR, by therapeutic class and diagnosis

| <i>n</i> (%) | ICS ‡ | | LABA ‡ | | CMB ‡ | | LAMA |
|--------------|----------------|---------------|---------------|---------------|----------------|---------------|----------------|
| | Asthma | COPD | Asthma | COPD | Asthma | COPD | COPD |
| Undersupply | 3156 (50.4) | 250 (34.2) | 466 (57.6) | 163 (44.9) | 2385 (52.5) | 833 (39.6) | 768 (30.3) |
| Adequate | 1414 (22.6) | 227 (31.0) | 220 (27.2) | 122 (33.6) | 1247 (27.4) | 909 (43.2) | 1324 (52.2) |
| Oversupply | 1692 (27.0) | 255 (34.8) | 123 (15.2) | 78 (21.5) | 915 (20.1) | 363 (17.2) | 444 (17.5) |

CMB: combination therapy inhaler; COPD: chronic obstructive pulmonary disease; ICS: inhaled corticosteroid; n: number; LABA: long-acting beta-agonist; LAMA: long-acting muscarinic antagonist
 ‡ indicates $p < 0.001$ for comparison within therapeutic class

Table 3: Results of logistic regression for adherence

| Variable | Crude OR (95% CI) † | Adjusted OR (95% CI) ‡§ | Adjusted OR p-value |
|-------------------|------------------------|----------------------------|------------------------|
| Sex | | | |
| Female | 1 (reference) | 1 (reference) | 0.013 |
| Male | 1.15 (1.08 – 1.23) | 1.09 (1.02 – 1.16) | |
| Age | | | |
| 0-19 years | 1 (reference) | 1 (reference) | <0.001 |
| 20-39 years | 1.03 (0.93 – 1.15) | 0.94 (0.84 – 1.06) | |
| 40-59 years | 1.27 (1.16 – 1.41) | 1.17 (1.06 – 1.30) | |
| 60-79 years | 1.85 (1.68 – 2.03) | 1.51 (1.35 – 1.69) | |
| 80+ years | 2.04 (1.75 – 2.37) | 1.60 (1.35 – 1.89) | |
| Diagnosis | | | |
| Asthma | 1 (reference) | 1 (reference) | <0.001 |
| COPD | 1.99 (1.86 – 2.12) | 1.32 (1.20 – 1.46) | |
| Therapeutic class | | | |
| ICS | 1 (reference) | 1 (reference) | <0.001 |
| LABA | 0.83 (0.73 – 0.94) | 0.68 (0.59 – 0.77) | |
| CMB | 1.02 (0.96 – 1.09) | 0.87 (0.81 – 0.94) | |
| LAMA | 2.19 (1.98 – 2.42) | 1.33 (1.17 – 1.52) | |
| SABA (doses/day) | 1.11 (1.10 – 1.12) | 1.11 (1.10 – 1.12) | <0.001 |
| OCS | | | |
| No | 1 (reference) | N/A | 0.824 |
| Yes | 1.24 (1.16 – 1.31) | | |

CI: confidence interval; CMB: combination therapy inhaler; COPD: chronic obstructive pulmonary disease; ICS: inhaled corticosteroid; LABA: long-acting beta-agonist; LAMA: long-acting muscarinic antagonist; N/A: not applicable; OCS: oral corticosteroids; OR: odds ratio; SABA: short-acting beta agonist

† univariate analysis with MPR \geq 80% utilised as outcome

‡ multivariate analysis adjusted by sex, age, diagnosis, therapeutic class and SABA utilisation, with MPR \geq 80% utilised as outcome

§ model fit assessed by c-statistic: 0.68 (95% CI: 0.67-0.69)

Table 4: Results of logistic regression for persistence

| Variable | Crude OR (95% CI) † | Adjusted OR (95% CI) ‡§ | Adjusted OR p-value |
|-------------------|------------------------|----------------------------|------------------------|
| Sex | | | |
| Female | 1 (reference) | 1 (reference) | <0.001 |
| Male | 1.14 (1.07 – 1.21) | 1.14 (1.07 – 1.21) | |
| Age | | | |
| 0-19 years | 1 (reference) | 1 (reference) | <0.001 |
| 20-39 years | 0.91 (0.82 – 1.01) | 0.97 (0.87 – 1.08) | |
| 40-59 years | 1.09 (0.99 – 1.21) | 1.17 (1.06 – 1.29) | |
| 60-79 years | 1.48 (1.35 – 1.63) | 1.58 (1.43 – 1.75) | |
| 80+ years | 1.53 (1.31 – 1.79) | 1.61 (1.37 – 1.90) | |
| Diagnosis | | | |
| Asthma | 1 (reference) | N/A | 0.444 |
| COPD | 1.31 (1.22 – 1.41) | | |
| Therapeutic class | | | |
| ICS | 1 (reference) | 1 (reference) | <0.001 |
| LABA | 0.66 (0.58 – 0.74) | 0.60 (0.53 – 0.68) | |
| CMB | 0.89 (0.83 – 0.95) | 0.81 (0.76 – 0.88) | |
| LAMA | 1.23 (1.11 – 1.37) | 0.94 (0.84 – 1.06) | |
| Type of therapy | | | |
| Established | 1 (reference) | 1 (reference) | <0.001 |
| New | 0.78 (0.72 – 0.84) | 0.81 (0.75 – 0.87) | |

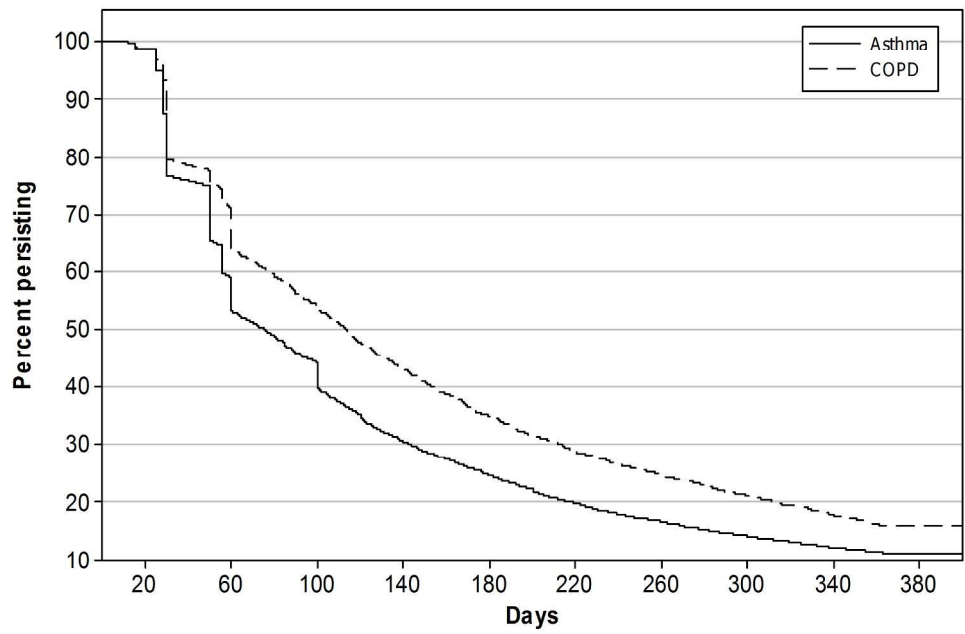
CI: confidence interval; CMB: combination therapy inhaler; COPD: chronic obstructive pulmonary disease; ICS: inhaled corticosteroid; LABA: long-acting beta-agonist; LAMA: long-acting muscarinic antagonist; N/A: not applicable; OR: odds ratio

† univariate analysis with persistence > 100 days utilised as outcome

‡ multivariate analysis adjusted by sex, age, therapeutic class and type of therapy, with persistence > 100 days utilised as outcome

§ model fit assessed by c-statistic: 0.57 (95% CI: 0.56-0.58)

1
2
3
4
5
6
7
8
9
10
11
12
13
14
15
16
17
18
19
20
21
22
23
24
25
26
27
28
29
30
31
32
33
34
35
36
37
38
39
40
41
42
43
44
45
46
47
48
49
50
51
52
53
54
55
56
57
58
59
60



Kaplan-Meier survival curves for 1-year medication persistence for asthma and COPD patients overall

Review Only