

Climatic forcing before, during, and after the 8.2 Kyr B.P. global cooling event

DEVENDRA LAL^{1,*}, WILLIAM G LARGE² and STEPHAN G WALKER¹

¹*Scripps Institution of Oceanography, GRD 0244, La Jolla, CA 92093, USA.*

²*National Center for Atmospheric Research, Boulder, Colorado, CO 80307, USA.*

**e-mail: dlal@ucsd.edu*

This paper attempts at full characterization of the unique global 8.2 Kyr B.P. cooling event. Significant atmospheric cooling started during 9.5–8.5 Kyr B.P. when the Sun was extremely quiet during three periods of ~ 50 – 100 years. The flood of melt water in the N. Atlantic from glacial lakes during the demise of the Laurentide ice sheet, starting at ~ 8.5 Kyr B.P., adds to the atmospheric cooling. Climatic forcing events occurred at 8.5 Kyr B.P., at 8.2 Kyr B.P. and finally at 8.06 Kyr B.P., leading to concurrent increases or decreases in the atmospheric $\Delta^{14}\text{C}$ levels, completely consistent with the climatic forcing proposed here.

1. Introduction

The largest abrupt climatic event at 8.2 Kyr B.P. has drawn considerable attention of climate modelers (Alley and Agustsdottir 2005; Morrill and Jacobsen 2005; Rohling and Palike 2005), in view of its global character and magnitude and occurrence in the Holocene, but it has not yet been fully characterized. The GISP2 $\delta^{18}\text{O}$ record shows a distinct earlier cooling period during 8.5–8.3 Kyr B.P., consistent with the date ($\sim 8.5 \pm 0.3$ Kyr B.P.) obtained for the outburst drainage from glacial lakes Agassiz and Ojibway during the terminal demise of the Laurentide ice sheet (Barber *et al* 1999; Rohling and Palike 2005). Atmospheric cooling however began about thousand years earlier (Lal *et al* 2005), during periods of low solar activity. We show that by correlating the atmospheric $\delta^{18}\text{O}$ record in Greenland Summit ice with (i) the tree ring cosmogenic ^{14}C record during 10,000–7000 yr B.P. and (ii) the information on levels of solar activity during the same period, based on cosmogenic ^{14}C produced in the Greenland Summit ice event, we are able to fully characterize the cooling event in terms of its climate forcing. We discuss below the sequence of events

which caused the abrupt cooling at ~ 8.2 Kyr B.P.

2. Records of $\Delta^{14}\text{C}$ in tree rings, and of $\delta^{18}\text{O}$ in GISP2 ice, and cosmogenic ^{14}C in Summit ice from Greenland

Based on measurements of cosmic ray flux, derived from cosmogenic *in situ* produced ^{14}C in the GISP2 ice core, it has been deduced (Lal *et al* 2005) that during 9.5–8.5 Kyr B.P., solar activity was extremely low for century scale periods, similar to that during Maunder Minimum (1645–1715 A.D.). The ice record is based on an observed increase in the cosmogenic *in situ* produced ^{14}C (and therefore in the cosmic ray flux) in four samples of ages between 8.6 and 9.7 Kyr B.P. by a factor of 2.3 ± 0.31 (Lal *et al* 2005). This is a direct inference based on the measurement of cosmic ray flux at the GISP2 site. The polar cosmic ray flux is related to the full interplanetary cosmic ray flux in the 1 A.U. interplanetary space, and is inversely correlated with solar activity. It is not influenced by any changes in the geomagnetic field strength or climate. Based on the theoretical model for cosmic

Keywords. 8.2 Kyr cooling event; paleoclimate; atmospheric ^{14}C ; atmospheric $\delta^{18}\text{O}$; enhanced oceanic mixing; cosmogenic ^{14}C in ice; atmospheric sciences; climate; modeling.

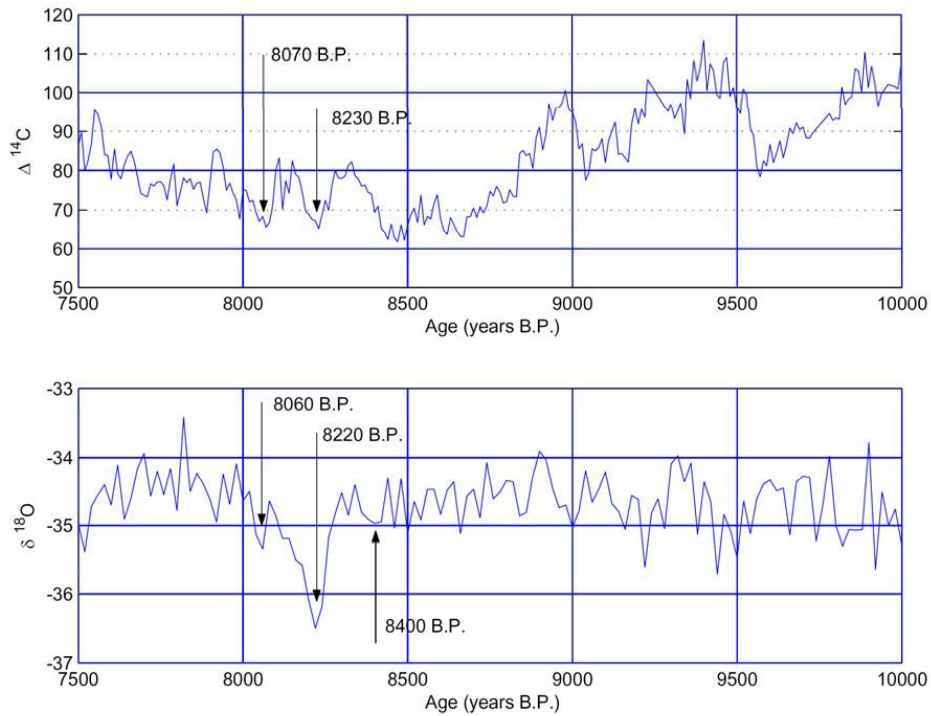


Figure 1. The upper figure shows the unfiltered $\Delta^{14}\text{C}$ record in tree rings (Stuiver *et al* 1998) for the time period 10,000–7500 yr B.P. The lower figure shows the unfiltered $\delta^{18}\text{O}$ values in Greenland Summit ice (Greenland Ice Sheet Project 2), measured by Stuiver *et al* (1995) for the same period. The ages of minima in the $\Delta^{14}\text{C}$ and $\delta^{18}\text{O}$ records are marked.

ray modulations by solar activity, the measured cosmic ray flux is theoretically consistent with essentially no sunspots for periods of 50–100 years for each of the samples analyzed. A support for this inference is found in the tree ring atmospheric $\Delta^{14}\text{C}$ record which shows three $\Delta^{14}\text{C}$ peaks (figure 1). It should be noted here that the tree ring record cannot be used by itself to determine the level of solar activity in the past, since it is influenced by changes in climate and geomagnetic field intensity (Lal *et al* 2005). Nevertheless, the three $\Delta^{14}\text{C}$ excursions seen in figure 1 at ~ 9.43 , 9.24 and 8.98 Kyr B.P. are comparable to that observed during the Maunder Minimum (Stuiver and Braziunas 1989), $\sim 20\%$, and clearly support the inference that the $2 \times$ higher cosmic ray flux during the deposition of the four ice samples (Lal *et al* 2005) was due to century scale periods when there were essentially no sunspots, as observed during the Maunder Minimum.

One would expect significant climatic changes during 9.5–8.5 Kyr B.P. when the Sun was very quiet for three periods of about 50–100 years each. Historical records for the past 1800 years, including the Maunder Minimum, show that changes in solar brightness, although amounting to less than 1%, are well correlated with changes in terrestrial climatic records (Lean *et al* 1995; Pang and Yau 2002). Based on a large number of observations of

climate indicators in ocean sediments and in polar ice covering the past 15–20 Kyr, Bond *et al* (2001) have presented extensive records of drift ice and ocean surface temperatures, as recorded by a few mineral tracers and planktonic $\delta^{18}\text{O}$, respectively, and compared these records with smoothed and detrended records of ^{14}C in tree rings (and ^{10}Be ocean sediments). A common feature of the records is that periods of strong ice drift are related to colder epochs, and closely match large changes in ^{14}C , suggesting that periods of increased ice drift are related to periods of reduced solar output. We note that the Summit $\delta^{18}\text{O}$ record in ice shows clear depressions of temperature during the three positive excursions in the tree ring atmospheric $\Delta^{14}\text{C}$ record, corresponding to low solar activity (figure 2, based on data in figure 1) at ~ 9.43 , 9.24 and 8.98 Kyr B.P. The high-resolution measurements of $\delta^{18}\text{O}$ in a stalagmite (Neff *et al* 2001) from Oman point to periods of low solar activity including 9.0 Kyr B.P. (which matches the positive excursion in $\Delta^{14}\text{C}$ in figure 1). A number of other observations (Bond *et al* 2001) show that colder climates were related in the past to higher ^{14}C production rates, implying a causal relation to a quieter Sun (which corresponds to reduced solar modulation of the interstellar cosmic ray flux). Thus it seems fairly certain that colder periods generally match periods of low solar activity.

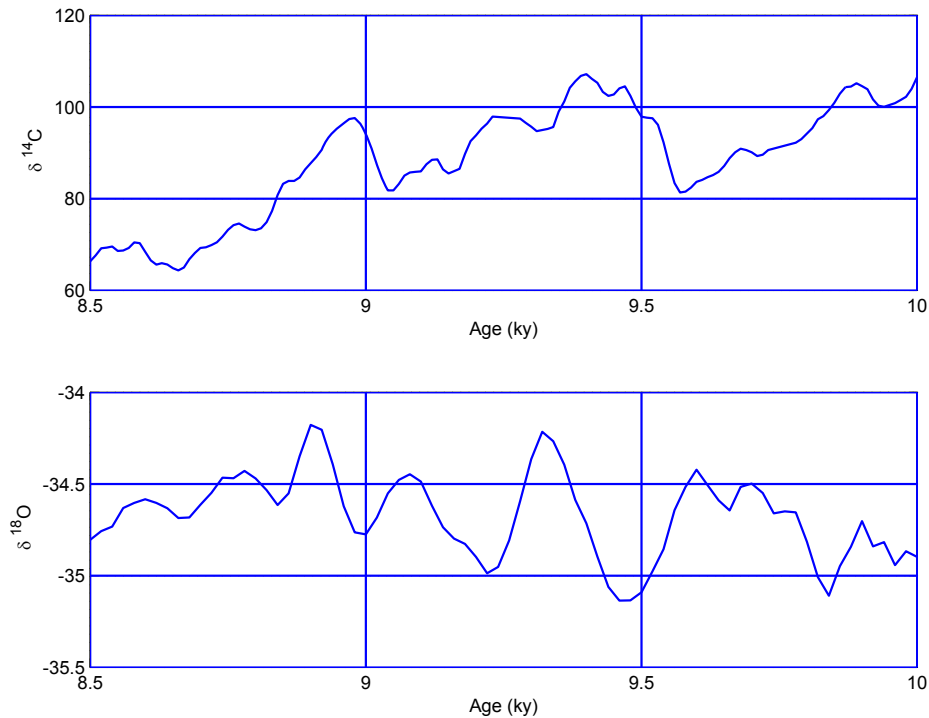


Figure 2. Filtered $\Delta^{14}\text{C}$ record in the tree rings (Stuiver *et al* 1998) for the low solar activity epoch, 10,000–8500 yr B.P. is shown in the upper figure; the corresponding $\delta^{18}\text{O}$ record in the Greenland Summit ice (Greenland Ice Sheet Project 2), measured by Stuiver *et al* (1995), is shown in the lower figure.

The 8.2 Kyr event is seen in both the $\delta^{18}\text{O}$ and $\Delta^{14}\text{C}$ records, matching well in the cooling as well as the recovery periods. There occurs a concurrent decrease in the $\Delta^{14}\text{C}$ record during the cooling event. This decrease can only be explained if the cooling event was caused by increased vertical mixing in the oceans, which could have resulted from increased wind speeds, causing an episodic turn over of the upper oceanic layers. This is in fact supported by wind simulation studies discussed below, and is consistent with the expected change in $\Delta^{14}\text{C}$. However, if the GISP2 chronology was in error, so that in fact there occurred a concurrent increase in atmospheric tree ring $\Delta^{14}\text{C}$ record during the cooling event (which is possible to entertain by shifting the GISP2 chronology by +80 years), then the increase in $\Delta^{14}\text{C}$ would be due to spreading of melt water on the ocean surface. The latter would decrease the vertical mixing rate of the oceans, expected due to slowing down of NADW formation and also due to freshening of the surface waters, which would cause stable stratification of the mixed layer in the N. Atlantic (Worthington 1968; Berger and Killingley 1982; Berger 1987; Rahmstorf 1995).

Note that the event chronology in figure 1 is based on the Greenland Ice Project 2 (GISP2) chronology. If however, we shift the GISP2 chronology by \pm (1 and 2%), the relations between $\delta^{18}\text{O}$

and $\Delta^{14}\text{C}$ records would be severely mis-aligned, suggesting that the GISP2 chronology is fairly accurate within 20 years. In the period of interest, as discussed below, this is consistent with the new Greenland chronology (Rasmussen *et al* 2006).

3. Sequence of events since 9500 B.P. leading to the 8200 yr B.P. cooling event

We can now summarize the sequence of climatic events before and around the 8.2 Kyr cooling event:

- (i) The atmosphere cooled (Lal *et al* 2005) for a total period ≥ 200 years during 9.5–8.5 Kyr B.P. due to three episodes of solar quiet periods (figure 1), which was followed by
- (ii) release of flood of melt waters from the glacial lakes Agassiz and Ojibway (Barber *et al* 1999; Rohling and Palike 2005) during 8.5–8.3 Kyr B.P. (figure 1 shows the conspicuous cooling event in the GISP2 $\delta^{18}\text{O}$ record during 8.5–8.3 Kyr B.P. with a peak at ~ 8.4 Kyr B.P.), which caused a significant increase in atmospheric $\Delta^{14}\text{C}$ by ~ 12 – 14% (figure 1). This is expected since freshening of the surface waters would cause stable stratification of the mixed layer in the N. Atlantic (Worthington 1968; Berger and Killingley 1982; Berger 1987; Rahmstorf 1995), and also the slow down of

NADW formation, both leading to a reduction of exchange of carbon dioxide between the atmosphere and the ocean. Glacial outburst was followed by

- (iii) an abrupt temperature decrease at ~ 8.3 Kyr B.P. coincident with a synchronous decrease (within 10 years) in the atmospheric $\Delta^{14}\text{C}$ (figure 1), followed by
- (iv) another cooling event at 8.08–8.0 Kyr B.P. (figure 1), before full recovery of the 8.2 Kyr B.P. event, again coincident with a consequent decrease in the atmospheric $\Delta^{14}\text{C}$.

The significant concurrent decreases in atmospheric $\Delta^{14}\text{C}$ during phases (iii) and (iv) would be expected only if vertical oceanic mixing was enhanced during these periods, bringing deeper waters to surface, lowering $^{14}\text{C}/^{12}\text{C}$ ratios. *Note that increased vertical mixing also lowers the atmospheric temperature, serving as a positive feedback in maintaining the 8.2 Kyr cooling event.* In order to check on the magnitude of changes expected from enhanced vertical mixing in the oceans during colder periods, we have made runs with the NCAR Climate System model, which is discussed below.

4. Effects of increased strength of global winds during cold periods

It is generally accepted that open ocean and coastal upwelling are the principal forcing for ~ 80 – 90% of the global oceanic productivity (Summerhayes *et al* 1995). In mid-ocean or in the coastal regions, wind stress on the ocean surface causes horizontal divergence, which is compensated by the upwelling of deeper waters. Winds affect upwelling in two ways, through Ekman pumping at the coast and through the additive effect of wind-stress curl. In order to quantitatively see the effect of increased wind speeds, we carried out model runs with the NCAR Climate System model (Doney *et al* 1998; Gent *et al* 1998) for the case of $2 \times$ global wind stress, corresponding to change in global winds by $\sqrt{2}$.

The temperature difference (ΔT), between $2 \times$ wind stress and the control run are plotted here for four depth levels, 6.0, 38.42, 93.57 and 527.7 m in figure 3. The surface temperatures at 6m depth are seen to decrease by 1 – 2°C and 0.5 – 1°C respectively, in about 29% and 38% of the global ocean area. Cooling in the 70 – 90°N and $> 60^\circ\text{S}$ regions are much smaller ($< 0.25^\circ\text{C}$). Appreciable differential cooling persists to depths of 93.57 m. Regions with ΔT values of 1 – 2°C exist down to depths of 527.7 m. The results of this simulation allow for the inferred 8.2 Kyr B.P. cooling of Greenland temperatures.

The expected decreases in the atmospheric $\Delta^{14}\text{C}$ can be estimated from the measured pre-bomb natural ^{14}C levels (Key *et al* 2004) for the three principal oceans Pacific, Atlantic and Indian. If we mix well the top 100, 200, 300, 500, 700 and 1000 m of the ocean, we expect decreases in the atmospheric $\Delta^{14}\text{C}$ values by 9.5, 18.1, 27.2, 46.0, 69.2 and 100.5‰, respectively. Considering that the vertical mixing is not homogeneous over the oceans (figure 3), the observed decrease of $\sim 15\%$ in $\Delta^{14}\text{C}$ during the 8.2 Kyr B.P. event is qualitatively consistent with the model run for the $2 \times$ global wind stress, which shows that wind stress has caused widespread global deep vertical mixing to depths of ~ 500 m, leading to substantial temperature reduction even at depths of 93.57 m.

5. A consistent model for the forcing of the 8200 yr B.P. event

The foregoing shows that the events observed during 8.5–8.2 Kyr B.P. are presumably a natural consequence of forcing of climate by the existence of very low solar activity (Lal *et al* 2005) during 9.5–8.5 Kyr B.P., with additional forcing by the large flood of melt water in the N. Atlantic from glacial lakes during the terminal demise of the Laurentide ice sheet, beginning at ~ 8.5 Kyr B.P. (Barber *et al* 1999; Rohling and Palikey 2005). So far we have based our inferences on the GISP2 chronology for the $\delta^{18}\text{O}$ record. The depositional chronology of the ice samples analyzed is fairly well known since the layer thicknesses are reliable in the interval of time of interest, and there exist suitable tie points with U/Th chronology (Alley *et al* 1997; Cuffey and Clow 1997; Meese *et al* 1997; Hughen *et al* 2004). The thinning factors are not too dependent on the accumulation model (Cuffey and Clow 1997); they lie in the ranges: 2.2–2.5, 3–3.5 and 3.5–4.0 respectively for ice of ages 5 Kyr and 10 Kyr B.P. The cumulative estimates of errors in age assignment for ice of ages < 3 Kyr B.P., 4–39 Kyr B.P. are $\sim 1\%$ and 2% respectively (Meese *et al* 1997). GISP2 chronology is well tied to a few well-dated events within assigned errors. Two tie points (Hughen *et al* 2004) are: the termination of the Younger Dryas and the Heinrich 3 event at ~ 30 Kyr B.P. Hughen *et al* (2004) have commented on the absolute accuracy of the GISP2 chronology for the period 10–40 Kyr. They note that the U/Th dates for millennial scale events from Hulu Cave in eastern China and Villars Cave in southwest France correlate well with the GISP2 chronology.

In order to assess the dependence of the interpretation of the atmospheric $\delta^{18}\text{O}$ on the age

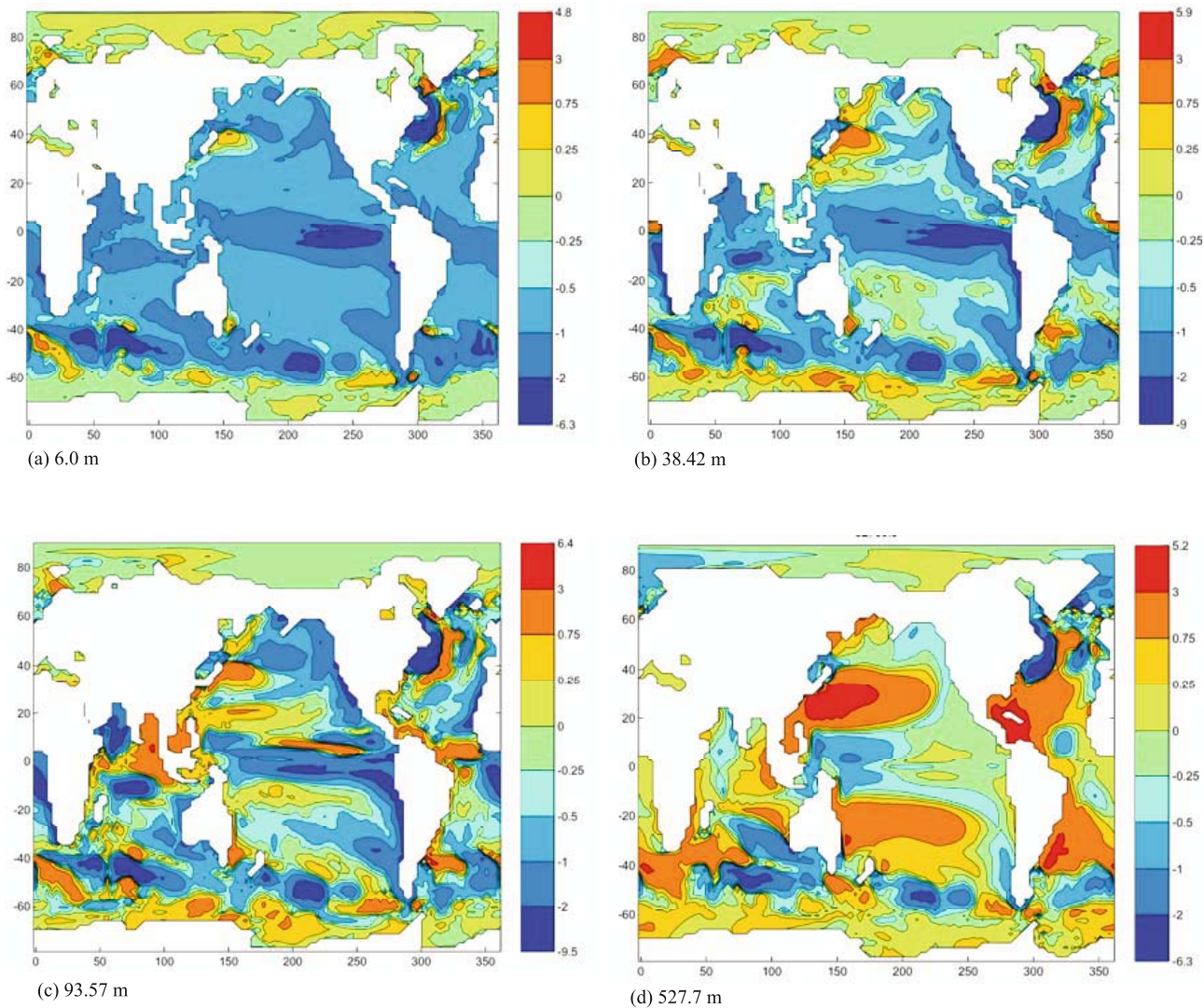


Figure 3. Iso-contour profiles of temperature differences in global ocean at 4 depths, 6.0, 38.42, 93.57 and 527.7 m, between $2 \times$ wind stress and the control runs with the ocean–atmosphere coupled NCAR Climate System Model (Doney *et al* 1998; Gent *et al* 1998).

assignment, we have plotted the $\delta^{18}\text{O}$ record by displacing it by ± 1 and 2% in figure 4, along with the atmospheric $\Delta^{14}\text{C}$ tree ring record. It becomes apparent from figure 4 that the match between the $\delta^{18}\text{O}$ records during the 9.5–8.5 Kyr B.P. when the Sun was extremely quiet during three periods of 50–100 years each, becomes very poor for the ± 1 and 2% shifts in GISP2 ice chronology, sometimes showing higher $\delta^{18}\text{O}$ values during the three positive excursions in $\Delta^{14}\text{C}$ tree ring record. During the time interval, 8.5–8.0 Kyr B.P., only the case of chronology shifted by $+1\%$ seems to show some match between $\delta^{18}\text{O}$ and $\Delta^{14}\text{C}$ records at ~ 8230 B.P.; but other correlations are altered in sign: (i) the sign of the $\Delta^{14}\text{C}$ change at ~ 8.3 Kyr is reversed, and (ii) during the positive excursions in $\Delta^{14}\text{C}$ at 9.0 Kyr B.P., the $\delta^{18}\text{O}$ record shows a prominent warming.

Based on comparison of ^{14}C and ^{10}Be records in the GRIP core, Muscheler *et al* (2004) concluded that the timing of the mid-8.2 Kyr event was ~ 8.15 Kyr B.P., i.e., ~ 70 years earlier than that given by the GISP2 chronology (figure 1). A new chronology for the North Greenland Ice Core Project (NGRIP) and GRIP ice cores for the 7.9–14.8 Kyr bracket has been presented by Rasmussen *et al* (2006). In the time interval of interest here, 10–8 Kyr B.P., the GISP2 chronology differs from NGRIP chronology by -20 to $+38$ years. The differences between NGRIP and GISP2 ages are -38 , -27 , -9 , 21 and 20 yrs respectively at 8.0, 8.5, 9.0, 9.5 and 10.0 Kyr. This corresponds to a shift in the GISP2 chronology by -33 years for the mid-8.2 Kyr event, and $\sim +20$ years at ~ 9.5 Kyr. The new NGRIP chronology (Rasmussen *et al* 2006) suggests a shift of ~ -30 years in the GISP2

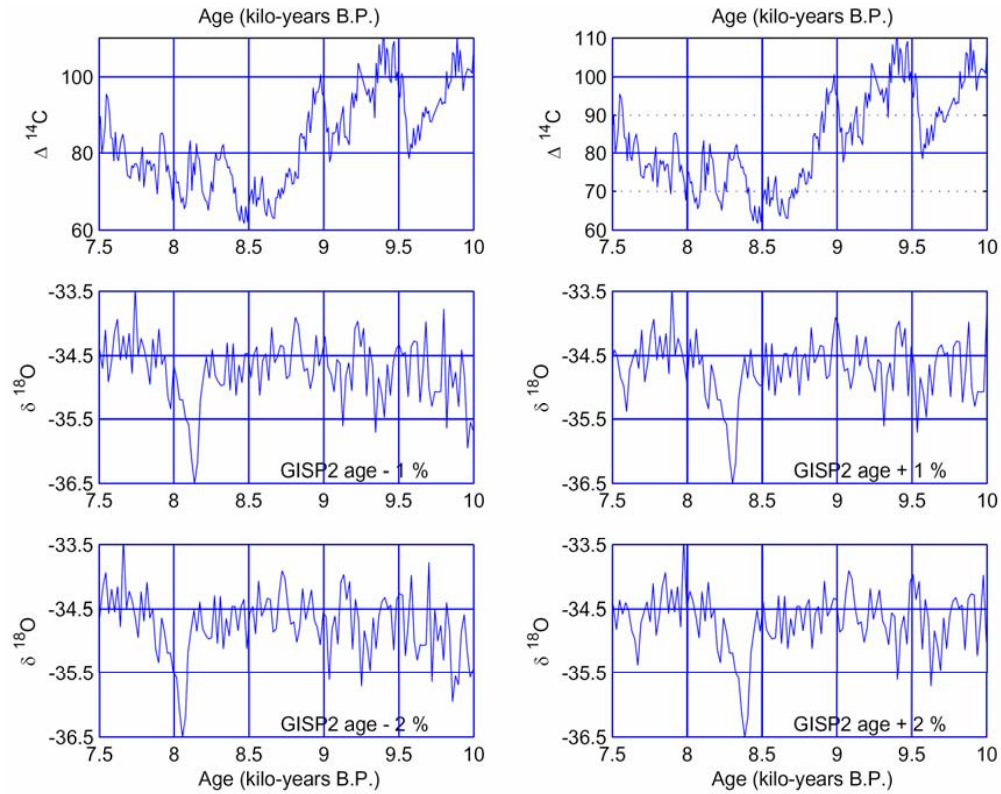


Figure 4. The top two figures show the $\Delta^{14}\text{C}$ record in tree rings, reproduced from figure 1, for the time period 10–7.5 Kyr B.P. The other four figures show the measured $\delta^{18}\text{O}$ values in Greenland Summit ice (Greenland Ice Sheet Project 2), as in figure 1, but with the chronology shifted by ± 1 and $\pm 2\%$.

chronology at ~ 8.2 Kyr. This does not significantly alter the scenario of events discussed above.

However as discussed above, we do see that a very consistent climate chronology is that based on the GISP2 $\delta^{18}\text{O}$ chronology in the entire time range of 10–8 Kyr B.P., with a consistent pattern of relationships between tree ring $\Delta^{14}\text{C}$ and GISP2 $\delta^{18}\text{O}$ records, suggesting that the GISP2 chronology is correct within 20 years.

6. Concluding remarks

In conclusion, the data presented here show the combined effect of climatic cooling due to three low solar activity periods during 9.5–8.5 Kyr B.P. when the Sun was extremely quiet, and the large flood of melt water in the N. Atlantic from glacial lakes during the terminal demise of the Laurentide ice sheet, in contributing to the abrupt cooling event at 8.2 Kyr B.P. The climatic impact of these events is clearly imprinted in the tree ring cosmogenic ^{14}C record during 10,000–7000 yr B.P. The increase in $\Delta^{14}\text{C}$ during 8.5–8.3 Kyr B.P. is attributed to reduced atmosphere–ocean exchange rate due to slowing down of NADW formation, and also due to freshening of the surface waters. On the other hand, the concurrent decreases in

atmospheric $\Delta^{14}\text{C}$ at 8.2 Kyr B.P. and 8.06 Kyr B.P. are attributed to increased vertical mixing in the oceans, forced by strong large scale winds, especially during the 8.2 Kyr B.P. cold period (increased vertical mixing serves as positive feedback due to bringing up cooler waters which further lower the atmospheric temperature), and release of lower $^{14}\text{C}/^{12}\text{C}$ ratio carbon from deeper layers of the ocean. The scenario presented here is supported by model calculations with NCAR Climate System Model, which show that even a global $2 \times$ wind stress ($\sqrt{2} \times$ wind speed) causes fairly extensive global vertical mixing to depths of ≥ 500 m, and the observed distribution of natural (pre-bomb) levels of ^{14}C in the oceans (Key et al 2004).

Acknowledgements

We thank NSF-OPP Polar Programs, Wolf Berger, and Jeff Severinghaus for very helpful comments and advice.

References

- Alley R B, Shuman C A, Meese D A, Gow A J, Taylor K C, Cuffey K M, Fitzpatrick J J, Grootes P M, Zielinski G A, Ram M, Spinelli G and Elder B 1997 Visual-stratigraphic

- dating of the GISP2 ice core: Basis, reproducibility, and application; *J. Geophys. Res. – Oceans* **102** 26,367–26,381.
- Alley R B and Agustsdottir A M 2005 The 8 k event: cause and consequences of a major Holocene abrupt climate change; *Quat. Sci. Rev.* **24** 1123–1149.
- Barber D C *et al* 1999 Forcing of the cold event of 8,200 years ago by catastrophic drainage of the Laurentide lakes; *Nature* **400** 344–348.
- Berger W H and Killingley J S 1982 The Worthington effect and the origin of the Younger Dryas; *J. Marine Res.* **40** 27–38.
- Berger W H 1987 Ocean ventilation during the last 12,000 years: hypothesis of counterpoint deep water production; *Marine Geol.* **78** 1–10.
- Bond G, Kromer B, Beer J, Muscheler R, Evans M N, Showers W, Hoffmann S, Lotti-Bond R, Hajdas I and Bonani J 2001 Persistent solar influence on north Atlantic climate during the Holocene; *Science* **294** 2130–2136.
- Cuffey K M and Clow G D 1997 Temperature, accumulation, and ice sheet elevation in central Greenland through the last deglacial transition; *J. Geophys. Res. – Oceans* **102** 26,383–26,396.
- Doney S C, Large W G and Bryan F O 1998 Surface ocean fluxes and water mass transformation rates in the coupled NCAR climate system model; *J. Climate* **11** 1420–1441.
- Gent P R, Bryan F O, Danabasoglu G, Doney S, Large W R and McWilliams J C 1998 The NCAR climate system model global ocean component; *J. Climate* **11** 1287–1306.
- Hughen K, Lehman S, Southon J, Overpeck J, Marchal O, Herring C and Turnbull J 2004 ^{14}C activity and global carbon cycle over the past 50,000 years; *Science* **303** 202–207.
- Key R M, Kozyr A, Sabine C L, Lee K, Wanninkhof R, Bullister J L, Feely R A, Millero F J, Mordy C and Peng T-H 2004 A global ocean carbon climatology: Results from global data analysis project (GLODAP); *Global Biogeochem. Cycles* **18** doi:10.1029/2004GB002247.
- Lal D, Jull A J T, Pollard D and Vacher L 2005 Evidence for large century time-scale changes in solar activity in the past 32 Kyr, based on in-situ cosmogenic ^{14}C in ice at Summit, Greenland; *Earth Planet. Sci. Lett.* **234** 335–349.
- Lean J, Beer J and Bradley R 1995 Reconstruction of Solar Irradiance since 1610 – Implications for Climate Change; *Geophys. Res. Lett.* **22** 3195–3198.
- Meese D A, Gow A J, Alley R B, Zielinski G A, Grootes P M, Ram M, Taylor K C, Mayewski P A and Bolzon J F 1997 The Greenland Ice Project 2 depth-age scale: Methods and results; *J. Geophys. Res.* **102** 26,411–26,424.
- Muscheler, Beer R J and Vonmoos M 2004 Causes and timing of the 8200 yr BP event inferred from the comparison of the GRIP ^{10}Be and the tree ring $\Delta^{14}\text{C}$ record; *Quat. Sci. Rev.* **23** 2101–2111.
- Morrill C and Jacobsen R M 2005 How widespread were climate anomalies 8200 years ago?; *Geophys. Res. Lett.* **32** doi:10.1029/2005GL023536.
- Neff U, Burns S J, Mangini A, Mudelsee M, Fletmann D and Matter A 2001 Strong coherence between solar variability and the monsoon in Oman between 9 and 6 kyr ago; *Nature* **411** 290–293.
- Pang K D and Yau K K 2002 Ancient observations link changes in Sun's brightness and earth's climate; *Eos. Am. Geophys. Union* **83** 489–490.
- Rahmstorf S 1995 Bifurcations of the Atlantic thermohaline circulation in response to changes in the hydrological cycle; *Nature* **378** 145–149.
- Rasmussen S O *et al* 2006 A new Greenland ice chronology for the last glacial termination; *J. Geophys. Res.* **111** doi:10.1029/2005JD006079.
- Rohling E J and Palike H 2005 Centennial-scale climate cooling with a sudden cold event around 8,200 years ago; *Nature* **434** 975–979.
- Stuiver M and Braziunas T F 1989 Atmospheric ^{14}C and century scale solar oscillations; *Nature* **338** 405–408.
- Stuiver M, Reimer P J, Bard E, Beck J W, Burr G S, Hughen K A, Kromer B, McCormac G, Plight J V D and Spurk M 1998 INTCAL98 radiocarbon age calibration, 24,000-0 cal BP; *Radiocarbon* **40** 1041–1083.
- Stuiver M, Grootes P M and Braziunas T F 1995 The GISP2 $\delta^{18}\text{O}$ climate record of the past 16,500 years and the role of the sun, ocean, and volcanoes; *Quat. Res.* **44** 341–354.
- Summerhayes C P, Emeis K-C, Angel M V, Smith R L and Zeitzschel B 1995 Upwelling in the ocean; Report of Dahlem Workshop Sept. 25–30, 1994, Berlin (John Wiley and Sons) 422.
- Worthington L V 1968 Genesis and evolution of water masses; *Meteorological Monographs* **8** 63–67.