



## Evidence for increasing severity of community-onset boils and abscesses in UK General Practice

Journal:	<i>Epidemiology and Infection</i>
Manuscript ID:	HYG-SP-5829-Jul-14.R1
Manuscript Type:	Short Paper
Date Submitted by the Author:	22-Oct-2014
Complete List of Authors:	Shallcross, Laura; UCL, Infection & Population Health Hayward, A; UCL, Infection & Population Health Johnson, A; UCL, Infection & Population Health Petersen, Irene; UCL, Primary Care & Population Health
Keyword:	Staphylococcus aureus, Public health, Epidemiology, Community epidemics, Incidence

SCHOLARONE™  
Manuscripts

Only

1  
2  
3 **Title:** Evidence for increasing severity of community-onset boils and abscesses in UK

4  
5 General Practice

6  
7  
8 **Authors:** L.J.SHALLCROSS,<sup>1\*</sup>, A.C. HAYWARD<sup>1</sup>, A.M. JOHNSON<sup>1</sup>, I.PETERSEN<sup>2</sup>

9  
10  
11 **Affiliations:** <sup>1</sup>Research Department of Infection and Population Health, University College

12  
13 London; <sup>2</sup>Research Department of Primary Care and Population Health, University College

14  
15 London

16  
17  
18 \*Corresponding author. Tel. +44 (0)20 3549 5540

19  
20  
21 Email l.shallcross@ucl.ac.uk

22  
23  
24 UCL Research Department of Infection & Population Health, Farr Institute of Health

25  
26 Informatics Research, 222 Euston Road, London NW1 2DA, United Kingdom

27  
28  
29  
30  
31  
32  
33  
34  
35  
36  
37  
38  
39  
40  
41  
42  
43  
44  
45  
46  
47  
48  
49  
50  
51  
52  
53  
54  
55  
56  
57 **Running head:** Increasing severity of boils and abscesses in the UK

## Summary

In England hospital admissions for severe staphylococcal boils and abscesses trebled between 1989 and 2004. We investigate this trend using routine data from primary and secondary care. We used the Health Improvement Network (THIN), a large primary care database and national data on hospital admissions from Hospital Episode Statistics (HES). Time trends in the incidence of primary care consultation for boils and abscesses were estimated for 1995-2010. HES data was used to calculate age-standardized hospital admission rates for boils, abscesses and cellulitis.

The incidence of boil or abscess was 450 (95% CI 447-452) per 100000 PY and increased slightly over the study period (IRR 1.005, 95% CI: 1.004-1.007). The rate of repeat consultation for a boil or abscess increased from 66 (95% CI: 59-73) per 100000 person-years in 1995 to peak at 97 (95% CI: 94-101) per 100000 person-years in 2006, remaining stable thereafter. Hospital admissions for abscesses, carbuncles, furuncles and cellulitis almost doubled, from 123 admissions per 100000 in 1998/1999 to 236 admissions per 100000 in 2010/11

Rising hospitalisation and recurrence rates set against a background of stable community incidence suggests increased disease severity. Patients may be experiencing more severe and recurrent staphylococcal skin disease with limited treatment options.

1  
2  
3 Since the late 1990's annual outpatient and emergency department visits for abscesses or  
4 cellulitis in the USA have almost doubled [1]. In England there has been a five-fold increase  
5  
6 in hospital admissions for staphylococcal septicaemia, pneumonia and impetigo and a three-  
7  
8 fold increase for staphylococcal abscesses and cellulitis [2]. The burden of disease in the  
9  
10 community is unknown because there have been no systematic surveys. We investigate  
11  
12 whether consultations for boils and abscesses, and repeat episodes have increased in primary  
13  
14 care using data from The Health Improvement Network (THIN) database. Further, we  
15  
16 explore if there has been a sustained increase in hospital admissions for staphylococcal skin  
17  
18 infections using data from Hospital Episode Statistics (HES).  
19  
20  
21  
22  
23

24 We used individual-level data from THIN and aggregated data from HES. In the United  
25  
26 Kingdom, 98% of the population is registered with a General Practitioner who acts as a  
27  
28 gatekeeper to specialist services and provides advice, treatment and prescriptions. Practices  
29  
30 contributing to THIN enter demographic and clinical data into the clinical records by using  
31  
32 Vision software every time a consultation takes place, generating a longitudinal record. Since  
33  
34 1990, symptoms, diagnoses, treatments and referrals have been recorded using a hierarchical  
35  
36 system of more than 100000 Read codes. Prescriptions are recorded linking each formulation  
37  
38 to the British National Formulary ([www.bnf.org](http://www.bnf.org)). Social deprivation is estimated by the  
39  
40 Townsend score, a composite measure based on levels of unemployment, car ownership,  
41  
42 household overcrowding and housing tenure, linked to the patient's postcode. THIN contains  
43  
44 the medical records of more than 11 million patients [3], and is broadly representative of the  
45  
46 UK population [4]. Prescription and consultation rates in the dataset are comparable to  
47  
48 national statistics and external data sources [5]. Adequacy of death recording is assessed by  
49  
50 comparing mortality rates recorded by the practice to national age and sex standardized  
51  
52 mortality rates [6]. We included data from when practices met the acceptable mortality  
53  
54 recording criteria and were fully computerized.  
55  
56  
57  
58  
59  
60

1  
2  
3 Hospital Episode Statistics (HES) is a national dataset containing information on every  
4 admission to a NHS hospital ([www.hscic.gov.uk/hes](http://www.hscic.gov.uk/hes)). Admissions are coded by professional  
5 coders to identify the primary reason for admission, classified using the 10<sup>th</sup> edition of the  
6 International Classification of Diseases (ICD-10).  
7  
8  
9  
10

11  
12 In our primary care study, patients were eligible for inclusion if they were registered with a  
13 participating practice between 1 January 1995 and 31 December 2010. Read code lists were  
14 developed to identify patients seeking care for a boil or abscess. Boils and abscesses were  
15 selected because they are predominantly caused by *S. aureus* and are easily identified in  
16 General Practice. To assess time trends, we included the first consultation for a boil or  
17 abscess for patients of all ages, so patients were counted once per practice. Patients left the  
18 study on the earliest of the following dates: date of consultation for a boil or abscess, date  
19 patient left the practice, date of death, date the study ended (31 December 2010). Recurrent  
20 infection was defined as between two and five consultations for a boil or abscess within a  
21 calendar year.  
22  
23  
24  
25  
26  
27  
28  
29  
30  
31  
32  
33  
34  
35

36 In our secondary care study patient admissions were identified based on ICD-10 codes  
37 corresponding to abscesses, carbuncles, furuncles and cellulitis [2]. These conditions were  
38 chosen because *S. aureus* is the main causative organism, or in the case of cellulitis, one of  
39 the most important organisms. We obtained an extract of aggregate data on all hospital  
40 admissions where the primary diagnosis was one of these codes, including repeat admissions.  
41 These data cover all NHS hospital admissions in England for each financial year (1 April to  
42 31 March) from 1998/1999 to 2010/2011. We used annual population denominator  
43 information from the Office for National Statistics ([www.statistics.gov.uk](http://www.statistics.gov.uk)) to calculate age-  
44 specific hospital admission rates.  
45  
46  
47  
48  
49  
50  
51  
52  
53  
54  
55  
56  
57  
58  
59  
60

1  
2  
3 We used negative binomial regression to estimate changes in the incidence of primary care  
4 consultation per year adjusted for age, sex and social deprivation (Townsend score). We used  
5 a random effects model to account for clustering of observations by practice. The  
6 denominator was the total number of person-years contributed by patients in the sample  
7 population for each corresponding calendar year.  
8  
9

10  
11  
12 For the analysis of secondary care admissions we used indirect age-standardisation to allow  
13 meaningful comparison of annual rates, taking the population of England in 1998/1999 as the  
14 baseline.  
15  
16

17  
18  
19 The THIN program of anonymized data provision for researchers was approved in 2002.  
20  
21

22  
23  
24 This study was approved by the THIN scientific review committee, reference 11-504. Ethical  
25 approval is not required for analysis of anonymized HES data.  
26  
27

28  
29  
30 Overall, 164461 people had at least one primary care consultation for a boil or abscess  
31 between 1995 and 2010, corresponding to 211243 consultations. There was a slight (five  
32 percent) increase in the incidence of first consultation for a boil or abscess, from 411 (95%  
33 CI: 394-428) in 1995 to 433 (95% CI: 426-440) per 100000 person-years in 2010, although  
34 the overlapping confidence indicate this may be a statistical artefact (IRR 1.005, 95% CI:  
35 1.004-1.007). The rate of repeat consultation increased from 66 (95% CI: 59-73) in 1995 to  
36 peak at 97 (95% CI: 94-101) per 100000 person-years in 2006 (IRR 1.65, 95% CI: 1.48-1.85)  
37 and remained stable thereafter, Figure 1. Hospital admissions for abscesses, carbuncles,  
38 furuncles and cellulitis almost doubled, increasing in a linear fashion from 123 admissions  
39 per 100000 in 1998/1999 to 236 admissions per 100000 in 2010/11.  
40  
41  
42  
43  
44  
45  
46  
47  
48  
49  
50

51  
52  
53 Although the number of patients consulting general practice with a boil or abscess did not  
54 change substantially between 1995 and 2010, the frequency of repeat consultation amongst  
55 those diagnosed with a boil or abscess has increased. Furthermore, over the last 15 years  
56  
57  
58  
59  
60

1  
2  
3 there has been a sustained rise in hospital admissions in England for staphylococcal skin  
4  
5 infections.  
6

7  
8 Our study suggests increasing hospitalisations cannot be explained by more cases in primary  
9  
10 care. Instead staphylococcal strains may have become more severe or more difficult to treat,  
11  
12 causing recurrent infection. This could be driven by a combination increased drug resistance,  
13  
14 as in the USA where community-onset MRSA is a major public health concern, or by  
15  
16 increased virulence, conferred by a toxin such as the Panton Valentine Leukocidin (PVL),  
17  
18 which has been epidemiologically linked to recurrent community-onset staphylococcal boils  
19  
20 and abscesses [7]. Without access to microbiological data we cannot confirm these  
21  
22 hypotheses, although the prevalence of community-onset MRSA in the UK is thought to be  
23  
24 low [8].  
25  
26  
27  
28

29 The strengths of this study is its' scale and that it uses data from two different, high quality  
30  
31 datasets. The primary care dataset is large and nationally representative, with prescription  
32  
33 and consultation rates that are comparable to those recorded by national statistics and external  
34  
35 data sources. THIN contains the medical records of approximately six percent of the UK  
36  
37 population registered with a General Practitioner, and is broadly representative of this  
38  
39 population in terms of demographics, major condition prevalence and deaths rates adjusted  
40  
41 for demographics and social deprivation [4]. The HES dataset covers all admissions. The  
42  
43 limitations relate to the fact that THIN data are recorded for patient management and not for  
44  
45 the purpose of research. Thus, we used boils and abscess as a proxy for staphylococcal  
46  
47 infection and recognise that up to a quarter of infections may have been caused by a different  
48  
49 pathogen [9]. Patients consulting for boils and abscesses were identified using diagnostic  
50  
51 Read codes but some general practitioners might prescribe an antibiotic without recording a  
52  
53 diagnostic code. Similarly patients with a boil or abscess may attend the Emergency  
54  
55 department rather than visit their GP, potentially underestimating the incidence of infection in  
56  
57  
58  
59  
60

1  
2  
3 the community. We used repeat consultation as a crude measure of disease severity and  
4  
5 acknowledge this does not differentiate between consultations for a new infection and a  
6  
7 prolonged infection.  
8  
9

10 Our findings suggest the number of patients experiencing severe and recurrent staphylococcal  
11  
12 skin disease in the community has increased, with a rise in the rate of repeat consultations in  
13  
14 primary care and increased hospital admissions. By contrast there is no evidence for an  
15  
16 increase in primary care consultations for uncomplicated boils and abscesses. The mainstay  
17  
18 of treatment for recurrent infections is decolonisation therapy using topical antibiotics such as  
19  
20 mupirocin and chlorhexidine antiseptic. Given the paucity of data to support decolonisation  
21  
22 therapy in the community [10], more work is needed to identify better treatments for  
23  
24 recurrent staphylococcal skin infection in primary care.  
25  
26  
27  
28

29 All authors declare no conflict of interest. L.S. is funded by a Medical Research Council  
30  
31 training fellowship G0501879  
32  
33  
34  
35  
36  
37  
38  
39

40 Figure 1. The rate of recurrent infection amongst patients consulting their General  
41  
42 Practitioner for a boil or abscess, 1995-2010  
43  
44  
45  
46  
47  
48  
49  
50  
51  
52  
53  
54  
55  
56  
57  
58  
59  
60



## Reference List

- 1  
2  
3  
4  
5  
6  
7  
8  
9  
10  
11  
12  
13  
14  
15  
16  
17  
18  
19  
20  
21  
22  
23  
24  
25  
26  
27  
28  
29  
30  
31  
32  
33  
34  
35  
36  
37  
38  
39  
40  
41  
42  
43  
44  
45  
46  
47  
48  
49  
50  
51  
52  
53  
54  
55  
56  
57  
58  
59  
60  

(1) **Hersh AL, et al.** National trends in ambulatory visits and antibiotic prescribing for skin and soft-tissue infections. *Archives of Internal Medicine* 2008; **168**:1585-1591.

(2) **Hayward A, et al.** Increasing hospitalizations and general practice prescriptions for community-onset staphylococcal disease, England. *Emerging Infectious Diseases* 2008; **14**:720-726.

(3) **Cegedim Strategic Data** (<http://csdmruk.cegedim.com>). Accessed 22 October 2014.

(4) **Blak BT, et al.** Generalisability of The Health Improvement Network (THIN) database: demographics, chronic disease prevalence and mortality rates. *Journal of informatics in primary care* 2011;**19**: 251-255.

(5) **Lewis JD, et al.** Validation studies of the health improvement network (THIN) database for pharmacoepidemiology research. *Pharmacoepidemiology and drug safety* 2007; **16**: 393-401.

(6) **Maguire A, Blak BT, Thompson M.** The importance of defining periods of complete mortality reporting for research using automated data from primary care. *Pharmacoepidemiology drug safety* 2009; **18**: 76-83.

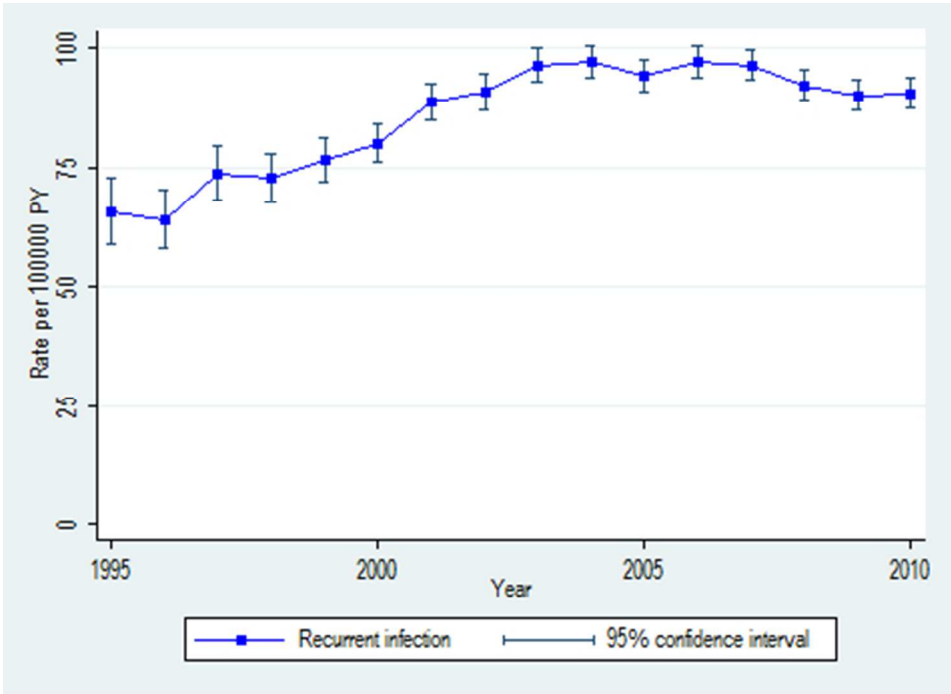
(7) **Dufour P, et al.** Community-acquired methicillin-resistant *Staphylococcus aureus* infections in France: emergence of a single clone that produces Panton-Valentine leukocidin. *Clinical infectious diseases* 2002; **35**: 819-824.

(8) **Holmes A, et al.** *Staphylococcus aureus* isolates carrying Panton-Valentine leucocidin genes in England and Wales: frequency, characterization, and association with clinical disease. *Journal of Clinical Microbiology* 2005; **43**: 2384-2390.

(9) **Issartel B, et al.** Frequent carriage of Panton-Valentine leucocidin genes by *Staphylococcus aureus* isolates from surgically drained abscesses. *Journal of Clinical Microbiology* 2005; **43**: 3203-3207.

(10) **Fritz SA, et al.** Effectiveness of measures to eradicate *staphylococcus aureus* carriage in patients with community-associated skin and soft-tissue infections: A randomized trial. *Infection Control and Hospital Epidemiology* 2011; **32**: 872-880.

1  
2  
3  
4  
5  
6  
7  
8  
9  
10  
11  
12  
13  
14  
15  
16  
17  
18  
19  
20  
21  
22  
23  
24  
25  
26  
27  
28  
29  
30  
31  
32  
33  
34  
35  
36  
37  
38  
39  
40  
41  
42  
43  
44  
45  
46  
47  
48  
49  
50  
51  
52  
53  
54  
55  
56  
57  
58  
59  
60



The rate of recurrent infection amongst patients consulting their General Practitioner for a boil or abscess, 1995-2010  
167x121mm (72 x 72 DPI)

www.Only