

**HARMFUL RECIPROCAL RELATIONSHIP BETWEEN HUMAN
AND NATURE PORTRAYED IN THE *EPIC* MOVIE**

THESIS

**BY
DIYA SRI WIDIYANTI
NIM 115110107111054**



**STUDY PROGRAM OF ENGLISH
DEPARTMENT OF LANGUAGES AND LITERATURES
FACULTY OF CULTURAL STUDIES
UNIVERSITAS BRAWIJAYA**

2015

**HARMFUL RECIPROCAL RELATIONSHIP BETWEEN HUMAN AND
NATURE PORTRAYED IN THE *EPIC* MOVIE.**

THESIS

**Presented to
Universitas Brawijaya
in partial fulfillment of the requirements
for the degree of Sarjana Sastra**

**BY
DIYA SRI WIDIYANTI
NIM 115110107111054**

**STUDY PROGRAM OF ENGLISH
DEPARTMENT OF LANGUAGES AND LITERATURES
FACULTY OF CULTURAL STUDIES
UNIVERSITAS BRAWIJAYA**

2015

DECLARATION OF AUTHORSHIP

Herewith I,

Name : Diya Sri Widiyanti

NIM : 115110107111054

Address : Kutogirang, RT 06/ RW 01 Mendek, Kec. Ngoro, Kab. Mojokerto

declare that :

1. This thesis is the sole work of mine and has not been written in collaboration with any other person, nor does it include, without due acknowledgement, the work of any other person.
2. If at a later time it is found that this thesis is a product of plagiarism, I am willing to accept any legal consequences that may be imposed to me.

Malang, 04 Febuari 2015

Diya Sri Widiyanti
NIM 115110107111054

This is to certify that the *Sarjana* thesis of **Diya Sri Widiyanti** has been approved by the Board of Supervisors

Malang, 04 Febuari 2015

Supervisor

Yusri Fajar, M. A.
NIP. 19770517 200312 1 001

Malang, 04 Febuari 2015

Co-supervisor

Arcci Tusita, S.S, M.Hum.
NIK. 840427.121 1 0347



This is certify that the *Sarjana* thesis of **Diya Sri Widiyanti** has been approved by the Board of Examiners as one of the requirements for the degree of *Sarjana Sastra*

Juliati, M. Hum, Chair
NIP. 19720929 200604 2 001

Yusri Fajar, M. A. Member
NIP. 19770517 200312 1 001

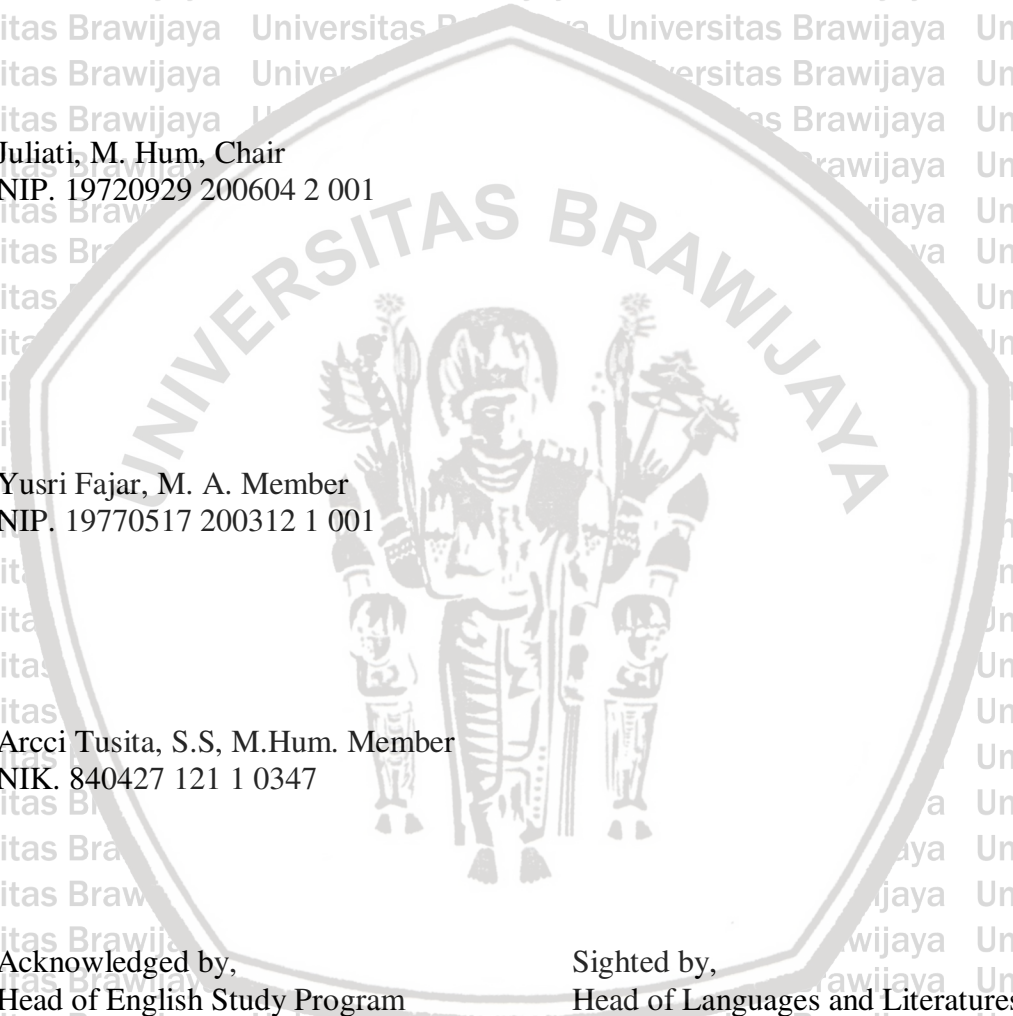
Arcci Tusita, S.S, M.Hum. Member
NIK. 840427 121 1 0347

Acknowledged by,
Head of English Study Program

Yusri Fajar, M.A
NIP. 19770517 200312 1 001

Sighted by,
Head of Languages and Literatures
Department

Ismatul Khasanah, M.Ed., Ph.D.
NIP. 19750518 200501 2 001



ABSTRACT

Widiyanti, Diya Sri. 2015. **Harmful Reciprocal Relationship between Human and Nature Portrayed in the *Epic* Movie**. Study Program of English, Universitas Brawijaya. Supervisor: Yusri Fajar, Co-Supervisor: Arcci Tusita.

Keywords: Ecocriticism, Human and Nature, Environmental, *Epic* Movie

Environmental problems become the trending topic in development of modern technology era nowadays. The environmental problems are studied specifically in ecocriticism. These problems are usually caused by unbalance relationship between human and nature. In this research, the researcher analyzes harmful reciprocal relationship between human and nature portrayed in the *Epic* movie. The problem of the research is divided into two points; (1) The harmful reciprocal relationship between human and nature, (2) The impacts of the relationship between human and nature described in the *Epic* movie.

This research uses qualitative method to analyze data because the data are in the form of utterances and figures taken from the movie. In addition, the researcher explains the result in the form of description rather than numeral. Hence, qualitative method is the most appropriate method to analyze *Epic* movie. Furthermore, Ecocriticism is used to analyze the movie.

The result shows that humans can exploit nature as research object without any concern about the impacts. Nature is also exploited as medium to establish human's power. Humans gain benefit from the relationship because they can improve their quality of life but nature becomes increasingly damaged. Moonhaven which is originally beautiful with balance ecosystem becomes unbalance and dry.

The researcher suggests the next researchers to use Ecocriticism theory in analyzing different movie like "*The Lorax Movie*" to show the impact of development of technology toward nature. This movie tells that humans create artificial natural object such as trees which are made of plastic. Moreover they must buy fresh oxygen to respire.

ABSTRAK

Widiyanti, Diya Sri. 2015. **Hubungan Timbal Balik yang Merugikan Antara Manusia dan Alam yang Tergambar dalam Film *Epic***. Program Studi Sastra Inggris, Universitas Brawijaya. Pembimbing: (I) Yusri Fajar, (II) Arcci Tusita

Kata Kunci: Ecocriticism, Manusia dan Alam, Kerusakan Alam, Film Berjudul *Epic*.

Permasalahan lingkungan menjadi bahan pembicaraan utama di zaman teknologi yang semakin berkembang seperti saat ini. Permasalahan lingkungan dikaji secara detail pada pembahasan *Ecocriticism*. Permasalahan lingkungan ini biasanya disebabkan oleh ketidakseimbangan antara manusia dengan alamnya. Pada penelitian ini penulis meneliti hubungan timbal balik yang merugikan antara manusia dan alam yang tergambar dalam film *Epic*. Permasalahan penelitian dibagi menjadi dua bagian: (1) Hubungan timbal balik yang merugikan antara manusia dan alam, (2) Dampak hubungan timbal balik antara manusia dan alam.

Penelitian ini menggunakan pendekatan kualitatif untuk menganalisis data karena data dalam bentuk perkataan dan gambar. Penambahannya, peneliti menjelaskan hasil analisis berbentuk deskripsi daripada angka. Sehingga metode penelitian menggunakan kualitatif adalah metode yang paling sesuai untuk menganalisis film *Epic*. Selebihnya, *Ecocriticism* digunakan untuk menganalisis film.

Hasil penelitian menunjukkan bahwa manusia dengan bebasnya bisa memanfaatkan alam seperti menjadikan alam sebagai objek untuk penelitian. Alam juga dieksploitasi sebagai perantara untuk membangun kekuasaan. Manusia mendapatkan keuntungan dari hubungan timbal balik tersebut dikarenakan mereka semakin berkembang namun alam menjadi semakin rusak. Moonhaven yang awalnya indah dengan ekosistemnya yang seimbang menjadi tidak seimbang dan mengalami kekeringan.

Penulis menyarankan peneliti selanjutnya untuk menggunakan teori *Ecocriticism* dalam menganalisis film yang berbeda seperti "*The Lorax Movie*" untuk menunjukkan dampak dari perkembangan teknologi terhadap alam. Film tersebut menceritakan mengenai manusia menciptakan alam buatan seperti pohon yang terbuat dari plastik. Bahkan mereka harus membeli oksigen untuk bernafas.

ACKNOWLEDGEMENTS

First of all, the researcher would like to present her gratitude to Allah SWT., for blessing that has been given so that this thesis entitled “Harmful Reciprocal Relationship between Human and Nature” can be properly finished.

The researcher would also like to express her honor to Yusri Fajar, M.A. as the supervisor for his insightful criticism, knowledge, and supervision which are very helpful to enable the researcher finish this thesis on time. Appreciation is also dedicated to Arcci Tusita, S.S, M.Hum as the co-supervisor for her great advice, suggestions, and incredible patience during the process of finishing the thesis. The gratitudes are also dedicated to Juliati, M. Hum as the examiner, who has given comments, suggestions, and revisions to make this thesis better. The researcher also wishes to thank her parents, Diyat, Dilah, and her brother, Tomi, for their valuable prayers and support. Many thanks go to all of her friends in English study research Universitas Brawijaya for the precious advice and endless support.

Hopefully, this research can be beneficial for the next researchers and students who have interest in analyzing literary which including movie.

Malang, 04 Febuari 2015

The researcher

TABLE OF CONTENTS

TITLE PAGE	i
DECLARATION OF AUTHORSHIP	ii
SUPERVISORS APPROVAL	iii
BOARD EXAMINERS CERTIFICATE OF APPROVAL	iv
ABSTRACT	v
ABSTRAK	vi
ACKNOWLEDGEMENTS	vii
TABLE OF CONTENTS	viii
LIST OF FIGURES	ix
CHAPTER I INTRODUCTION	
1.1 Background of the Study	1
1.2 Problems of the Study	6
1.3 Objectives of the Study	7
CHAPTER II REVIEW OF RELATED LITERATURE AND RESEARCH METHODS	
2.1 Ecocriticism.....	8
2.1.1 Ecocriticism, Ecocriticism and Literary Studies	9
2.2 Human Ecology	10

2.3	Movie Studies	11
2.3.1	<i>Mise en scene</i>	13
2.3.2	Cinematography	15
2.4	Previous Studies	17
2.5	Research Methods	19
2.5.1	Choosing the Object of the Study	20
2.5.2	Collecting the Data	20
2.5.3	Analyzing and Interpreting the Data	20
2.5.4	Making Conclusion	21
 CHAPTER III FINDINGS AND DISCUSSION		
3.1	The Beauty of Moonhaven	24
3.2	The Relationship of Human and Nature	30
3.2.1	Nature as Human's Research Object	32
3.2.2	Nature as Human being's Medium to Establish Power	39
3.3	The Impacts of Harmful Reciprocal Relationship between Human and Nature	43
 CHAPTER IV CONCLUSION AND SUGGESTION		
4.1	Conclusion	48
4.2	Suggestion	49
REFERENCES		50



LIST OF FIGURES

Figure 3.1.1 Beautiful Waterfall before Entering Moonhaven	24
Figure 3.1.2 The Cheerfulness Expression of Queen Tara to the Nature	26
Figure 3.1.3 Queen Tara Greets Moonhaven's Citizen	28
Figure 3.1.4 Queen Tara and Snails.....	29
Figure 3.2.1 Mary Katherine is observing a Big Tree	30
Figure 3.2.1.1 Mr. Bomba Is Catching a Bird.....	33
Figure 3.2.1.2 Surveillance Cameras	34
Figure 3.2.1.3 Safety Sensors Detection of Creatures	34
Figure 3.2.1.4 Marry Katherine Comes to His Father's House.....	35
Figure 3.2.1.5 Marry Katherine is Observing His Father's Collection.....	36
Figure 3.2.1.6 Marry Katherine Arrive to Her Father's House.....	37
Figure 3.2.1.7 Mr. Bomba Have Been Chasing By Bats	39
Figure 3.2.2.1 Boggan or Mandrake's Son	40
Figure 3.2.2.2 Mandrake and Mandrake's Son	40
Figure 3.2.2.3 Mandrake Wants to Take Bud	43
Figure 3.2.3.2 Mandrake kills Tara.....	45
Figure 3.2.3.3 Queen Tara Gets Stubbed by Mandrake's Weapon.....	45
Figure 3.2.3.4 Damage of Moonhaven	46

CHAPTER I

INTRODUCTION

This chapter discusses the introduction of the research, which contains background of the study, problem of the study and objective of the study.

1.1 Background of the Study

There are many creatures live in nature like living and nonliving things which are interrelated and have function for supporting each other. Living things are humans, plants and animals. Then nonliving things are stones, water, soil, sand, and so on. Nature is important thing in human life. Human interactions with nature have existed since years ago. Humans need natural resources for their survival, so nature influences the development of human life both directly and indirectly. Nature is needed not only by human beings, but also by animals and plants. The relationship between living things and nature will provide a major influence on the formation of a good and comfortable environment. If the nature is balance, the ecosystem around the nature will be good as well. Take a dense forest for example. In a forest which is full of trees, the living creatures like animals can live well.

Basically human is dependent on nature. However, this relation has both advantage and disadvantage especially for the nature. Unfortunately, it is nature which frequently undergoes bad effect caused by human's actions such as deforestation. Humans get profit from deforestation by selling the woods. Meanwhile

the nature experiences bad effects from the action such as the land becomes infertile which finally leads to the destruction of environment. The explanation above is the definition of harmful reciprocal relationship between human and nature proposed by the researcher. In simple term, harmful reciprocal relationship between human and nature means a relationship between human and nature in which human get the advantage whereas the nature is the one which undergoes the bad effects.

Mostly a great number of news tells about environment issues such as forest exploitation, mining, pollution of air and water are reported in social media. Most of these environmental issues are caused by human's interaction with nature. Nature, for humans, is considered as marketable good which gives profit. Hence, humans will do anything to the nature to gain maximum profit. Humans tend to destroy the nature rather than preserving it. Most of people think that nature is mystic thing. When it goes right, humans forget it. When it goes wrong, they worry about it. Although humans have important role in making balance environment, they only let it flow without thinking about how to keep and preserve the nature.

The study of humans' relation with nature which is known as ecology has begun since years ago when humans lived in harmony with the nature. However, in line with revolution, the nature also changes. Unfortunately, these natural changes bring corruptness on earth. Hughes states "looking back to our historical ecology, Humans have related in multiple ways to the Earth's systems; some of these ways promise a sustainable balance with them, while others are destructive" (2001, p. 269).

When reviewing history of humans and nature, humans always have close

relationship with it. If they can keep and preserve nature, the nature will be sustainable. On the contrary, if humans do not care about nature, the nature will be corrupted. Nature is like mirror for humans. It gives good impact to humans if humans preserve it.

Obviously, humans do not really care about the condition of environment and they tend to destroy the nature. This phenomenon inspires Ecocritics who are concerned in literary study and environment in late nineteenth. For example is in 1985, Frederick O.Waage edited *Teaching Environment Literature: Material, Methods, Resources* and Alicia Nitecki founded *The American Nature Writing Newsletter* in 1989 (Glotfelty and Harold, 1996, p.xvii). They criticized humans' behavior toward nature. Those criticisms show the importance of avoiding that kind of behavior toward nature which brings damage to earth. The statement explained earlier signs that the study of literature which related to the environment issue to be discussed. In analyzing literature, humans ordinarily focus on the relation between humans and others (society) or between humans and themselves (psychology), as well as the relation between humans and environment. The study of literature which is related to earth was often forgotten, whereas, the study of literature which is related to the environment is actually needs more attention.

The study of environment does not always observe the nature or non-humans aspect but it tends to study the relation among nature, earth and the humans themselves. Humans actually are a part of environmental system, and therefore the environment has the crucial role in humans' life in which it becomes the main point

of literary study. In some respects, it is perhaps not surprising that the study of literary texts should be coupled with such forgetfulness of the earth. According to Glotfelty, Ecocriticism is the study of the relationship between literature and the physical environment (Barry, 2009, p.239). Ecocriticism is linked to the relationship between humans and non-humans. In this case non-humans refer to nature and theory the physical environment represents the nature such as: mountain, sea, ocean, river, trees, animals and etc. It also mentions the relationship between humans and nature itself. Humans cannot live without nature, but sometimes humans always think that the nature is a thing that cannot give them any benefits.

Movie is one of the mass media used to entertain. Movie, as well as other literary genre such as poetry, prose, short story, drama, are seizing the happening public issues at the define time then formulates it with the intrinsic elements of movie. Movie serves informative and educative functions, even persuasive. Meanwhile, the use of language in movie firmly establishes the connections to literature. Klarer (2004, p.56) says, "It is impossible to neglect film as a semi-textual genre both influenced by and exerting influence on literature and literary criticism.

Film is predetermined by literary techniques; conversely, literature practice develop particular feature under the impact of film". Based on his explanation, he tries to explain that movie and literary works have some similarities because movie is created by literary technique although the way to represent the idea contains both works are different.

Movie is unique compared to other genres of literature. Movie communicates not only through imagery, metaphor and symbol; visually through action and gesture; verbal through dialogue, but also directly through concrete image and sounds. Then, movies expand or compress time and space, travelling back and forth freely within their borders. Environmental problems give inspiration to many authors and movie makers to put the issue in their works. Many movies in the world show environmental issues, for example *Wall-E*, *Avatar*, *Naruto*, *Doraemon* and so on. Another environmental movie is Chris Wedge's *Epic* movie. *Epic* movie is American 3D computer animated fantasy action adventure film which is loosely based on William Joyce's work. It is taken from children's book entitled *The Leaf Men and the Brave Good Bugs*. The movie is produced by blue sky studios and director Chris Wedge. It gets cost advantage of about \$ 268,426,634. It is released 24th may 2013. The author tries to portray.

Epic movie tells about a journey of a girl named Mary Katherine (MK). She moves from city to professor's Bomba house, her father. He is a widower scientist who obsesses to find tiny creatures that he believes might live in the forest. Mary Katherine does not agree to his father's conception and decides to leave him again. Mary Katherine leaves her home and looks for her three legged dog named Ozzy that has run to the forest. Mary Katherine accidentally catches a light from the flower buds that surprisingly turns her into a mini creature. She finds a Moonhaven's forest is in miserable condition caused by Boggan. Moonhaven is a beautiful small green

area in a forest which becomes the heart of all the forest area. There are many creatures like animal, plants and leafmen live in there.

Epic movie is a unique movie to be analyzed. The environmental issue in it makes *Epic* movie differs from other movies in common. The story presents about the environmental issues which is adopted in reality. The story is quite difficult to understand because if audiences do not get the point of the story, they will not know about the meaning. Because of the story is about environmental issue and it is movie as the medium. It makes this cartoon often becomes an object of analysis. The reason why *Epic* movie as the object material of analysis is because *Epic* movie is American 3D computer animate fantasy action adventure movie which criticize environment exploitation. The movie functions as entertainment medium for many people, especially younger generation like children and teenagers. By watching the *Epic* movie they can understand the danger of harmful reciprocal relationship between humans and nature for nature and its impact.

1.2. Problem of Study

Based on the background of the study, this study is conducted in order to find the answer about;

1. What are the harmful reciprocal relationship between human and nature?
2. What are the impacts for the relationship between human and nature described in the *Epic* movie?

1.2 Objective of Study

Related to the problems above, the objective of this study is to analyze the harmful reciprocal relationship between human and nature. It is also to know the impacts of the relationship between human and nature described in the *Epic* movie.



CHAPTER II

REVIEW OF RELATED LITERATURE AND RESEARCH METHOD

This second chapter presents the related literature in conducting the research.

This chapter aims to give more information about the object and some relevant theories. It explains ecocriticism theory, human ecology, movie studies, the previous studies and the research method.

2.1 Ecocriticism

Ecocriticism is a concept first appeared in the late 1970, in a meeting of Western Literary association. Ecocriticism is dominated by the Association for Study of Literature and Environment (ASLE), a professional association that started in America but now has significant branches in the Ukraine and Japan. It has regular conference and publishes journals including literary analysis, creative writing and articles on environmental education. Ecocriticism observes the relation between humans and nonhumans aspects. This theory is created to criticize about environmental issues.

Glotfelty (1996) cited in Garrard (2004, p.3) says;

“Ecocriticism is the study of the relationship between literature and the physical environment. Just as feminist criticism examines language and literature from a gender-conscious perspective, and marxist criticism brings an awareness of modes of production and economic class to its reading of texts, Eco criticism takes an earth-centered approach to literary studies”.

Ecocriticism is concerned in the relationship between human and nonhuman. Nonhuman refers to nature, whereas physical environment represents the nature such as: mountain, sea, ocean, river, trees, animals and etc. It also mentions the relationship between the human and the nature itself. Human cannot live without nature, but sometimes human think that nature is a thing that cannot give any benefits. By understanding the relation between humans and nature, it is beneficial to determine the act effectively on the impact of natural destruction and to integrate knowledge and actions.

2.1.1 Ecocriticism and Literary Studies

Literature is a medium which serves as representation of life in some senses. The products of literature are literary works such as novel, movie, and song as a media to describe an environmental issue which relates to the reality. Literature analyzes environmental issues and looks for possible solutions for the correction of an imbalance environmental situation which is reflected in a literary work, in this study is in a movie. Through the literary works, ecocriticism develops its idea to make people more concern to the environment because human habit can influence the environmental situation. According to Greg Garrard,

Ecocritics, who analyze literary and other texts from an environmentalist standpoint; observe that environmental crisis poses not only technical, scientific and political questions, but also *cultural* ones. Our habits of representation affect and reciprocally reflect our mactions, but the enormous temporal and spatial scale of phenomena such as climate change and mass extinction, and the complex moral questions inherent in them, pose challenges for our existing artistic form (cited in Stibbe, 2009, p.1)

Based on the quotation above, environment is like culture that human must save and preserve because it can be gone if humans only care about themselves without respecting their surroundings. If they always do the right things, the environment will be nice and beautiful. If they do bad things, it is sure that the environment will be bad too.

The issues of environmental problem are getting important phenomenon nowadays. There are many movies is influenced by environmental issue such as *Epic* movie. Sometimes human have greedy characteristic to exploit nature freely so nature become victim.

2.2 Human Ecology

Epic movie tells about the relationship between human and non-human. It shows many issues of natural damage which are caused by human. Humans always have close relation with nature. This interrelationship between human and non-human always give impacts to each other. Harmful reciprocal relationship between human and nature will be discussed more detail in this research. So it needs human ecology theory for analyzing the movie. Rambo (1983, p.1) argues “Human ecology, most broadly defined as the study of human interactions with the environment, has in recent years gained greatly increased attention all of the social sciences”. Human relationship with nature is something important to discuss because human activity is always related to the nature.

It is not only human ecology theory which must be attended for harmful reciprocal relationship between human and nature but also the components of human ecology because they are important to support the research. According to Wardhana (2004, p.11)

“Terdapat tiga komponen yang berpengaruh dalam ekologi manusia, yaitu manusia itu sendiri, daya dukung alam serta ilmu pengetahuan dan teknologi”.

Translation

There are three components which influence human ecology namely human itself, nature, technology and science.

As what is explained by Wardhana, humans are prominent component which influence others. When human population is rising, it will influence other components like nature and science. If human population increases, the need of natural resources will be getting higher too. Imbalance of nature is caused by two factors; nature like act of god or natural selection and outside factor like corruptness which is caused by human.

2.3 Movie Studies

Humans like movie because they can see images and hear the sound. Movie is one product of popular culture which is often created based on literary work. Nachbar and Lause say ”a popular culture is a funhouse mirror because it reflects our image” (1992, p.7). Movie can be used as a medium to show the condition or identity of society. It can be an easy medium to educate and explain phenomena which happen in

human life. Many movie makers utilize it to say something to the audiences. So, that is why movie is a great medium to educate people.

Epic movie is interesting American 3D computer animated fantasy action adventure film to watch. Animation movie is a way to say something using more interesting pictures which are easier to understand by the audiences. It also has many symbols that are represented in the picture. In this study, movie study is needed because the object of the study is an animation movie. Animation has its own way to give message and meaning to the watcher. John Halas (cited in Jill Nelmes 2012, p.232) states;

Animation can also 'penetrate' interior workings of the body or a machine, or other kinds of complex inner state (dream, memory, consciousness, fantasy), and provide a literal and conceptual interpretation which enables them to be more readily understood. Further, by 'selecting' an aspect of a scene or scenario to be visualized this can be accentuated or brought into the foreground for effect; thus it may be 'exaggerated' or 'transformed' to better reveal its properties or significance. All of these elements can be contextualized within various time frames – things can be represented from the long past and projected easily into the future, perhaps on the one hand depicting extinct fauna and flora, or on the other, reimagining nature in a thousand years' time as a consequence of current ecological issues and effects

There is no big difference between animation and movie in usual. They can take any settings, themes, and plot. The symbol, meaning, and message can be the same. If a movie tells story about society, then animation can do it too. The difference is only in the actor, if movie in common uses real people, then animation movie only uses pictures. The cinematic technique also has no big difference.

Movie has its own language. A range of techniques are available to film-makers and those techniques are used to present a narrative through the medium of movie. A narrative is a chain of events that are causally linked. The language in film is used usually to tell stories. A movie's form is determined by the ways in which the story is told in the film, and is a combination of style and content. The content is structured by the narrative and style is shaped by the film techniques employed. Film techniques are the ways in which film technology is used. These techniques are covered by four terms: *mise en scene*, cinematography, editing and sound, each of which subsumes a range of subsidiary techniques (Abrams, 2001, p.93).

2.3.1 *Mise En Scene*

Mise en scene is a term that is originally developed in relation to theatre and literally translates as 'putting on the stage' (Abrams, 2001, p.93-95). He explains that the elements covered by *mise en scene* are setting, props, custom, performance, lighting and color.

1. Setting

The setting provides the space in which all the other elements of *mise en scene* are situated. The setting, like props and costume, sets up expectations for the viewer and can instantly produce meanings; it signifies certain things. By using setting the audiences know the condition of situation.

2. Props

Props are the inanimate objects placed within the setting. They may remain static or may be used by the characters in the film. Props may simply serve to strengthen the effect of the setting by making the environment in which the action takes place visually more convincing.

3. Costume

Costumes help create an actor's character. They can place an actor within a particular historical period, indicate social class or lifestyle, and even determine what is possible and what is not. A space suit makes survival in space possible. A cowboy wearing a gun can survive a shoot-out.

4. Performance

What an actor does within a shot obviously contributes significantly to the meanings produced. The way an actor moves can indicate confidence, uncertainty, panic, friendliness. The actor's facial expressions may show fear, anger, happiness, sadness. In addition to these examples of body language or non-verbal communication, and to the clear differences in the speech patterns of different actors, a performance may have a particular effect because of what the actor has previously done in other films.

5. Lighting and Color

Lighting illuminates the above-mentioned elements in a shot while itself also becoming an element within the shot. It has long been suggested that the human eye is drawn towards movement and towards the brightest area in a shot.

The researcher uses some parts in *mise en scene* to answer the problem study about environment. The element of setting, props, and costume are really important to be used for analyzing the Epic movie. There are some messages inside the movie that show harmful reciprocal relationship between human and nature that causes environment degradation inside *Epic* movie.

2.3.2 Cinematography

Abrams states, “If *mise en scene* refers to what is placed in front of the camera, then cinematography is concerned with recording the elements within the shot” (2001, p.98). Cinematography is a movie aspect that is concerned with the recording elements within the shot. In order to obtain the desired images, the cinematographer must attend to two areas: control of lighting and operation of the camera. The images consist of reflected light and the camera records light (Abrams, 2001, p.98). The parts of cinematography are framing, shot size, length of take, camera movement, and camera angle. The researcher only uses framing, shot size, and camera angle to analyze *Epic* movie.

2.3.2.1 Framing

Framing refers to the edges of a shot, in that framing determines both what is included and what is excluded. *Mise en scene* refers to what is to be filmed and how it is arranged and therefore in effect defines what the framing will be; however, strictly speaking, the framing is only realized when the shot is filmed through the camera lens (Abrams, 2001, p.98). By using framing, people can find some meanings reflected on

the scene of the movie. For an example is the relationship or conflict shown from some scene of the movie.

2.3.2.2 Shot Size

Shot size is the way we shot the elements on the scene. The way of shot determined about the narrative style shown from the movie. The shot itself is interesting and intriguing and shot sizes can be closely tied to narrative development, notably to the progression of scenes (Abrams, 2001, p.98). By looking on the shot size, the researcher can determine the relationships between each character which builds a story and presents some environmental problems in *Epic* movie.

There are 5 basics shot sizes such as;

- Extreme Long Shot (ELS)

Extreme Long Shot is usually used as the opening of the movie. ELS allow us to see the relation between the characters with his/her surrounding.

- Long Shot (LS)

LS Shot which shows all or most of a fairly large subject (for example, a person)

- Mid Shot (MS)

In such a shot the subject or actor and its setting occupy roughly equal areas in the frame.

- Close Up (CU)

CU will concentrate our attention on an important detail to ensure that the desired meaning is communicated

- Extreme Close Up (ECU)

ECU is used to make us inquisitive, or it may simply be an impressive shot because of its content

The analysis of different type of short size will help to identify some important meaning inside *Epic* movie. Employing some elements of shot size like close up and long shot will be easier to explain the meaning each scene.

2.3.2.3 Camera Angle

Camera angle provides another means of producing different meanings. Normally the camera angle is horizontal and at eye level. It usually communicates with each other at something approximating eye level and subconsciously expects to relate to the characters in films in the same way. However, high and low camera angles can be used too (Abrams, 2001, p.103). In this study, camera angle is used to find a meaning on a scene.

2.4 Previous Studies

This sub chapter contains previous studies which are found through reading thesis. There are one journal and two researches which are found by the researcher as the previous studies

The first previous study is written by Yu Yan (2011), entitled *The Call of the Wild – An Eco-critical Reading of The Old Man and the Sea*. She focuses on

literature and gender studies and American ecocriticism which discusses the basic relationship between human and non-human world. It stresses on human being and nature, which are mutually dependent in terms of the emotion, ethic and biology. She uses animal right theory to support her journal. In Yu Yan's journal, she wrote about the animal rights theory, which states that the whole nature and the component parts of nature have intrinsic value or inherent worth. As the result, animals cannot be treated as tools to promote human beings' welfare and they deserve the same manner as given to human beings. The similarity between recent thesis and the previous one is about the issue understudy which discuss about basic relationship between human and non-human world which leads to natural damage. Meanwhile, the difference between the researcher's thesis and Yan's thesis are about theory and object employed in the researches.

The researcher takes second previous study from Taufiq (2014), entitled "*Forest Exploitation as Represented in the Lord of the Rings: The Two Towers Movie*". He is a student of English department of Universitas Brawijaya. In his research, he applied ecocriticism as an approach to analyze a movie studies. He explored causes and effect of forest exploitation caused by Saruman's greediness. He only focuses on Saruman's character to show forest exploitation. Meanwhile, the recent research tries to show three characters that have different perspectives toward nature such as scientist, modern people and human who have power to control nature.

On the other hand, the two researches also have similarity in focus on discussing about forest exploitation caused by human.

The third previous study is taken from Romadon (2011) entitled "An Analyzing of Environmental Issues Using Ecocriticism in James Cameron's Film "Avatar". The research is aimed to find out the environmental issues which appear in Cameron's film "Avatar" by analyzing the relationship among the characters. Recent thesis has similarity with previous study which is about the issue being discussed. Both studies explore the environmental issues by analyzing the relationship among the characters.

The difference is if the previous study focus on analyzing the various relationship of nature with its varied characters; human and non-human especially Alien, but in the recent thesis it discusses about characters that have different perspective toward nature such as scientist, modern people and human has power to control nature.

2.5 Research Method

The method that is chosen for this research is qualitative research. Sugiono (2001, p.8) states that qualitative research is research method based on post-positivism philosophy, used to analyze natural condition. In qualitative research the researcher functions as instrument's key. The data collection is done in combination way between figures and conversations. The result of this research is concern more in meaning.

In conducting the research, there are three steps which are taken by the researcher, those are:

2.5.1 Choosing the Object of the Study

Epic movie is chosen as object of the study because *Epic* movie is one of American 3D computer animated fantasy action adventure movie which concerns about environmental issue.

2.5.2 Collecting the Data

In collecting the data the researcher downloads *Epic* Movie from www.ganool.com. The researcher also downloads the subtitle of the movie from www.englishsubtitle.com. The next step is watching the entire movie to understand the plot and recognize all the characters in the movie. Then the researcher selects the conversations and scenes which tell about harmful reciprocal relationship between human and environment organized as utterances and images.

2.5.3 Analyzing and Interpreting the Data

The researcher analyses *Epic* movie by using relevant theory especially Ecocriticism, human ecology and movie studies. The first step is analyzing different perspective of human toward nature depicted in the movie. The second is analyzing the object by using ecocriticism to find the harmful reciprocal relationship between human and nature which is caused by different perspective of human toward nature.

In addition Abrams' theory *mise en scene* and cinematography are used to strengthen the researcher's finding.

2.5.4 Making Conclusion

The last step in conducting this research is making conclusion. The researcher summarizes the results of the study to make it more understandable to the readers.



CHAPTER III

FINDING AND DISCUSSION

This chapter explains about the beauty of Moonhaven, the relationship between human and nature, and the impacts of harmful reciprocal relationship between human and nature portrayed in the “*Epic*” movie.

Human and nature are a unity that cannot be separated. Glotfelty (1996, cited in Garrard, 2004, p.3) explains that “Ecocriticism is a study of the relationship between literature and physical environment”. Nonhuman refers to nature, whereas physical environment represents the nature such as: mountain, sea, ocean, river, trees, animals and etc. It also mentions the relationship between human and the nature itself.

Basically, the relationship between human and nature is a beneficial relationship. Human life used to be very dependent on nature. Nature always helps human to survive and human preserve it. Anything which happens in the nature always gives impact to human directly. Based on history of human evolution, in gathering food era primitive people experienced food shortage which made them cannot survive at that time. Since then, people were aware of the importance of nature so they started to do farming. Humans have been experiencing the effect of nature destruction directly even before era of technology begins (Hadi, 2013).

Different from modern era, nature destruction does not affect human too much. Modernism signed by the development science and technology (Somerville, 2006: 17-18). The development of technology gives a big impact on human life style.

In modern era, the air circulation through vent is already rare especially in metropolitan cities. It is substituted by modern device created by human named air circulation. This invention makes the trees in the cities which originally function as natural air circulation become no longer serve the actual function. In addition, this modern device emits venomous gas which will affect to the thinning of ozone layer. The thinning of ozone layer makes earth becomes hotter. However, people ignore it as long as they get the benefit of the device.

According to Mufid (2010, p.47) humans become more selfish and greedy when they want to fulfill their principal commodity. They will do anything in order to achieve their needs like utilization of natural resources. Utilization of natural resources excessively gives bad effect especially for the nature such as forest exploitation. There are many examples of forest exploitation which is done by human like cutting trees; take a soil and poaching.

The impact of their actions is ecosystem around forest becomes not balance so there are many creatures die. Then the forest will be damaged which later leads to flood and landslide caused by the lack of drainage areas. Humans get profit from deforestation by selling the plants, animal and soil. Meanwhile the nature experiences bad effects from the action such as the land becomes infertile which finally leads to destruction of environment. So the researcher is more interested in analyzing harmful

reciprocal relationship between human and nature which are portrayed in the *Epic* movie. Humans always have mutual relationship with nature. However this relationship is not always profitable for both of them. In this movie human is described as greedy and selfish characteristic in exploiting nature. Moonhaven forest which used to be peaceful and balance becomes depraved because of humans' bad behaviors.

3.1 The Beauty of Moonhaven

Moonhaven is a beautiful small green area in a forest which becomes the heart of all the forest area. There are many creatures like animal, plants and leafmen live in there. This peaceful area is ruled by a queen named Queen Tara. The creatures in Moonhaven are very dependent upon the queen because she has a power to control the forest. Before entering the Moonhaven, there is a beautiful waterfall which covers the place. The waterfall is very high and rocky. This condition makes Moonhaven becomes unseen and hidden.



Figure 3.1.1 Beautiful Waterfall before Entering Moonhaven
Source: *Epic* Movie, minutes: 00:10:29

The image shows that the nature is still preserved. Without forests, human wouldn't have air to breathe. Their soils wouldn't have the nutrients to grow, and the animals that make up a part of their ecosystem would not exist (Kid's Corner; 2014).

Dense trees with green color, clean water without pollution and sunlight around it make Moonhaven forest complete. Large rocks with moss and plants portrait that the place is still pure. The combination of color and lighting of the picture make it more interesting.

The picture uses long shot size to show the beautiful landscape before entering Moonhaven forest. In detail, the audiences know that there are many wonderful things around the forest. From the setting of the movie, it explains that it happens around the forest. Combination between plants that live in rocks and flowing crystal clear waters make the forest becomes a perfect place.

In addition, the Perfection of Moonhaven forest is more complete with the presence of a good leader, the Queen Tara. She is the soul of the forest because she has a power to control the nature. She can do everything as she wants because of her power. The citizen around Moonhaven can accept Tara well and they also respectful to her. She loves Moonhaven forest more than her own life.



Figure 3.1.2 the Cheerfulness Expression of Queen Tara to the Nature

Source: *Epic* Movie, minutes: 00:10:29

The picture above shows that she is a beautiful queen, graceful and caring about nature. The queen is so friendly to nature. This is shown when the flower begins to blossom and it comes close to the queen as if they have spiritual bond. The sun which shines into every corner of the forest gives clear sight that the place is pretty natural and balance. There is no intervention from human being. It is pure of God creation.

The image uses Close up Shot to show the expression of Queen Tara in the forest. She is very happy. When she approaches to flowers, they start to bloom. Close up shot further strengthen the expression which is shown by Queen Tara. By using the theory of Abrams (2001), *mise en scene* "Costumes help create an actor's character", the audiences will understand better if the woman in movie is a queen. She is wearing a beautiful green dress. Mostly, the color of trees are green so green color of her dress is symbol of nature.

The beauty of Moonhaven is very attractive and profitable to be exploited by humans, one of which is as research object. Mr. Bomba used Moonhaven as research object. In order to find leafmen, he makes electronic tools and puts it around of Moonhaven. Installing Electronic tools influence the ecosystem in Moonhaven, Moonhaven's problem is not only caused by Mr. Bomba, but it is also Boggan. Boggan represents human that use nature as medium to establish power. They even make Moonhaven becomes barren and infertile in order to take it under their control.

For the forest's continuity, it needs a ceremony to elect a bud. It takes a very long time for the ceremony so that the queen does make any mistakes. The bud election ceremony is very important to the following generation of Moonhaven. If there is no ceremony, Moonhaven will disappear. The ceremony is not easy to execute, because Boggan will stop it. Boggan will prevent the ceremony so that there is no queen successor to protect Moonhaven. If that really happens, nature will becomes dry and barren, and Boggan will be the the ruler of the whole forest.

Ronin : Look, instead of a public ceremony, I go in with a small platoon...pretend we're stopping for a drink. We grab a pod, bring it back to you. It blooms, the life of the forest continues. We're in, we're out.

Queen Tara : It doesn't work that way. I can't choose unless I'm there. It's about the feeling. I get it from the pods... I get it from the forest... I get it from all of us. There we are. Don't you have feelings, Ronin?

Ronin : Yes, I feel this is a bad idea. The Boggans have never been this aggressive.

Queen Tara : I'm not completely helpless, you know.

Ronin : I am aware. But you're the life of the forest. Looking after you is my duty

Source: Epic Movie, minutes: 00:11:47- 00:12:31

In order to save the queen Tara, a warrior named Ronin plans to take buds silently before Boggan come. For her, the bud is very important so Ronin's idea is rejected by Tara. It should be taken by her because it needs sensitivity and natural instinct in taking the bud. She says that it is the best opportunity to find successor for her. Opportunity does not come twice so it is worth trying. She knows that it is very dangerous and she can die because Boggan will intrude the ceremony.



Figure 3.1.3 Queen Tara Greets Moonhaven's Citizen
Source: *Epic* Movie, minutes: 00:16:43

This is a picture of the queen when she greets the citizen in the Moonhaven. The citizens of Moonhaven are dominated by plants, animals and leafmen. Many citizens come to the ceremony to remember that it is importance to the whole forest's life. They are very excited when Queen Tara arrives in this forest. By using Long shot picture, it can be seen easier that the closeness of relationship between the queen and citizens. Queen Tara waving hand portrays her closeness with the plants and animals.

Queen Tara is a wise and fair queen. When she is going to pick the bud as

her successor, she asks two snails in there for their opinions. The snails give her suggestion. Queen Tara use the suggestion as further consideration before choosing the bud. Because of her wisdom and friendliness Queen Tara becomes favorite for all the citizens.



Figure 3.1.4 Queen Tara and Snails
Source: *Epic Movie*, minutes: 00:23:10

By applying long shot size it is obvious that Queen Tara is conversing about the bud with two snails. The setting gives stronger explanation that the place of the conversation takes placing is full of buds. The picture shows that there are hundreds of pinkish buds waiting to be blossoms. Hughes states, “looking back to our historical ecology, Humans have related in multiple ways to the Earth’s systems; some of these ways promise a sustainable balance with them, while others are destructive” (2001, p. 269). When reviewing history of humans and nature, humans always have close relationship with it. If they can keep and preserve nature, the

nature will be sustainable. On the contrary, if humans do not care about nature, the nature will be corrupted. Nature is like mirror for humans. It gives good impact to humans if humans preserve it.

3.2 The Relationship of Human and Nature

Humans have mutual relations whether between human beings themselves or other nonliving beings. One of the examples is human relationship with nature.

Humans' relationship with nature is determined by humans' role itself. Humans have a very important role then they can control other living things in the world. The development of other living things such as animal and plants always depend on human being. Human interaction with nature gives various impacts both positive and negative especially to nature. If they can use it well, other creatures will be safe also.

Obviously humans' life can never be separated from environment. The environment refers to nature. When breathing humans need nature to get fresh oxygen. They eat, drink, keep their health, habitat and so on are all influenced by the natural conditions. If they live in a healthy environment then it affects the lifestyle to be health too. Therefore, balance and unbalance of humans' relationship with nature can be disrupted because of human activities.

This movie explains that living beings in this world have a relationship with each other. There is no living thing that can survive without other creatures.

Ronin : "Many leaves, one tree."

Mary Katherine : What does that mean?

Ronin : We're all individuals, but we're still connected. It's what we live by. Hyah!

Mary Katherine : Maybe you're connected, but I'm kind of on my own.

Ronin : No one's on their own. Not even him.

Source: *Epic Movie*, minutes: 00:45:33- 00:45:51

Based on dialogue between Ronin and Marry Katherine above, Ronin is describing to Mary Katherine that none living things are created to live alone. They have connection although it is not directly seen. He describes that life is like a large tree with many branches. One branch has many leaves. Although it has leaves more than one but they have a relationship with each other so it makes it a green tree. This picture also shows Marry Katherine is looking at the tree.



Figure 3.2.1 Mary Katherine is observing a Big Tree

Source: *Epic Movie*, minutes: 00:45:43

Mary Katherine is observing a tree carefully which is described by Ronin.

Ronin tries to describe to her that there is nothing that is created without purpose.

Nobody can stand alone in the world. Life is like a tree. It looks so big with dense of branches that interconnected. Although the branches of trees stretch to different directions, but they still are in the same tree. Long shot size explains clearly to the

audience that there is a big tree in front of her and she is looking at to the tree in front of her.

Sometimes, humans have greedy characteristic to exploit nature so that it becomes the victim. In order to achieve their goals, humans never think about what they do is wrong. “What people have done about their ecology depend on what they think about themselves in relation to things around them. Human ecology is deeply conditioned by beliefs about our nature and destiny”, (White, 1996, p.6). It can be imagined when humans were only thinking about themselves and forgetting the nature or they were just considering their needs without considering the nature needs.

It can be ascertained that the nature will vanish and be extinct.

The following chapter gives detail explanations about the relation between human and nature. This chapter is divided into two subchapters namely nature as human’s research object and nature as human’s medium to establish power.

3.2.1 Nature as Human’s Research Object

Nature is very important for human life. Nature can also be a determinant of human quality. If the nature’s condition is balance, human activity will be easier but if the conditions are not balance, human activity is disturbed. “There are three components which influence human ecology namely human itself, nature, technology and science (Wardhana, 2004, p.11). Nature has a high carrying capacity for the continuity of life. Not only increasing the natural resources but the phenomena that occur in nature is quite interesting to be used as a research object.

Nature has a lot of natural resources which is needed by human. Because of that, humans are interested in observing anything about nature so nature can become as humans' research object for developing their knowledge. They can get many benefits from nature to develop their science. Humans take up any way to make their research succeed. Although the development experience makes people become more advanced but this attempt will eventually lead into bad effect for nature.

Natural phenomenon is something interesting point to be analyzed by humans. They can improve their knowledge by finding new information in the nature. *Epic* movie explains about nature as human's research object. Mr. Bomba uses nature to conduct his research.



Figure 3.2.1.1 Mr. Bomba is Catching a Bird
Source: *Epic* Movie, minutes: 00:02:11

That figure describes that Bomba Character is a scientist. It can be seen from costume and property he is wearing. He uses electronic tools in his research

process to find supporting data. He also wears a glass which is completed with zooming mode that can be used to see the object very closely. In terms of settings can describe that he finds a bird which fall off in the forest and show the condition which happen by him.

Mr. Bomba always does everything for reviewing his experiment. Mr. Bomba puts some electronic tools to support his research. Some electronic tools which are mounted around the forest freely give disadvantage to the nature.



Figure 3.2.1.2 Surveillance Cameras

Source: Epic Movie, minutes:

00:01:21



Figure 3.2.1.3 Safety Sensors

Detection of Creatures.

Source: Epic Movie, minutes:

00:02:01

Two pictures tell about electronic devices that are installed by Professor Bomba as function to conduct his research. Surveillance cameras in figure 3.2.1.2 can record anything that happens around the forest and safety sensors detection of creatures become the main focus of Mr. Bomba to detect something which is

important in the nature. By using the different shot size on two pictures above, the audience will easily understand about message of *Epic Movie*. The first image is a surveillance camera in figure 3.2.1.1 by using long shot. So the audience can see the camera is functioned to record events occurrence in nature, while the second picture in figure 3.2.1.2 uses close up shot to show safety sensors detection of creatures. If there is something important in the forest safety sensors detection will sound.

Different using of size make easier to audience gets the point of movie.

Nature is an object that gives many profits for human research. Mr. Bomba character explains about how important of natural for human research. For him nature is important thing for his research more than his life and family. He only wants his research to be successful so he decides to move in the forest because city area does not support the scientists to conduct a research.



Figure 3.2.1.4 Marry Katherine Comes to His Father's House
Source: *Epic Movie*, minutes: 00:05:54

Mary Katherine feels very unfamiliar when she knows her father's house.

The house is just considered as an old building and not suitable for humans to live in.

Close up shot further reinforces the image if there is a house surrounded by grass.

The house looks like an old building that stands alone without neighbors. It is so different from the city, where many kinds of building are built close to each other and there is almost no empty land.

Mr. Bomba is not only busy in the forest, but it is also in his house. Many kinds of experiments are done by him in his house. So he has many collections in his house which he gets from nature. It can be seen in the following image that there are many things in the frame.



Figure 3.2.1.5 Marry Katherine is Observing His Father's Collection

Source: Epic Movie, minutes: 00:06:45

The screen shot above shows the objects which are discovered by professor Bomba in nature such as the skeleton of other creatures. Mary Katherine begins to

observe the contents of the frame in detail. Her father has found some things that are strange and uncommon to her. Properties also are strongly support the view because by using properties, audiences can understand more if there are many objects which are attached to the frame.

Close up size emphasize that, there is relation between character and the condition in *Epic* movie that a girl is observing a frame in front of her. It can conclude that how important his natural research for the professor. So he is too busy with the research he does and he dose not that Mary Katherine has been arrived in his house.



Figure 3.2.1.6 Mary Katherine Arrive To Her Father's House
Source: *Epic* Movie, minutes: 00:06:56

The picture explains that professor Bomba is taking the book on the top shelf. He does not know that his daughter comes. Mary Katherine is looking at his activity. He seems busy with his research, while talking to himself and pacing from

one corner to another in order to complete the necessary tools which support his research. Mary Katherine cannot stop her father's activity and she only observes him.

They have not meet for long time because of the different location of their houses.

Mary Katherine lives in the city but his father decides to stay in the forest for the sake of his research. In fact, her father has not changed and he is still busy with his research.

By using a close up shot, property in movie looks very clearly. There are many books inside Mr. Bomba's house, binocular and tools that are usually used in research. Conflict is also portrayed in the image, where Marry Katherine only keeps silent with her father's behavior.

Mary Katherine opposes about his father's way of life. She thinks that his father's actions just a waste of time.

Marry Katherine : No, it's not what I want. I want you to stop!
All this! And be normal. I just, I want a dad who's not...

Mr. Bomba : Oh, um, okay. This is big.

Source: Epic Movie, minutes: 00:19:44

Mary Katherine tries to encourage her father to live a normal life like a human being in general. She thinks that her father's action to continue his research is useless. They have different mindset toward nature. Mary Katherine represents modern people who do not care about the environment when their life is complete, whereas Professor Bomba wants to find something new to show the greatness of his knowledge.

Mr. Bomba's obsession of research makes him create new supporting devices. He has bat sounds on his iPod. It functions to study about bat. In his opinion, insects have different dimension from other animals so he needs special device to support his research.



Figure 3.2.1.7 Mr. Bomba Have Been Chasing By Bats
Source: *Epic Movie*, minutes: 01:26:19

In this picture, it explains that the setting clearly shows that Mr. Bomba is in the forest and successful in calling the bats to come together. However, the bats are actually annoyed by the sound which comes from the iPod hence the bats are after the professor. Animal's habitat which is normal at the beginning becomes uncomfortable because of the device which produces sound.

3.2.2 Nature as Human Beings' Medium to Establish Power

When humans can control society in a region, they will become a leader in the region. The more they can dominate regions, the more they can develop their dominance. Infrequently, there are many wars looking for a region. According to

Miriam Webster Dictionary, war is a situation in which people or groups compete with or fight against each other. Wars cause damage to the environment because in the war a lot of weapons used or intended to destroy each other. Humans are beneficial with the incident because they can be more powerful but nature is the one which is injured by the war. The wars greatly impact the nature, such as they will loss nature, animals, plants and their habitats. The nature which at first is fine, becomes disturbed because of humans' activity.

This movie tells about humans who are very greedy. They can exploit nature freely for their own advantage without having any concerns about the bad effect. The greedy of human are represented by Boggan and Mandrake. They depict the humans who want to be the master of other humans through nature. The nature is used to gain power because the more they own nature the more powerful they are.

Boggan and Mandrake destroy nature to become the leader of Moonhaven.



Figure 3.2.2.1 Boggan or Mandrake's Son
Source: *Epic* Movie, minutes: 00:14:02

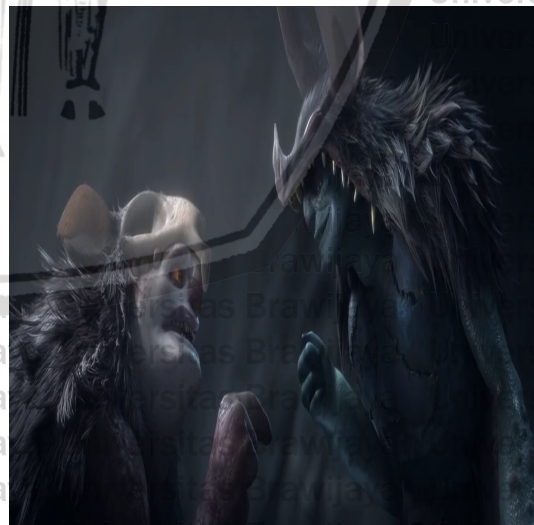


Figure 3.2.2.2 Mandrake and Mandrake's Son
Source: *Epic* Movie, minutes: 00:17:34

Long shot in figure 3.2.2.1 and close shot in Figure 3.2.2.2 strengthen that the figure has a relationship with human. Physical characteristics depicted by both characters are alike with human. They can stand upright with their two legs. They also have two arms which five fingers in each hand. They also wear cloth to cover their body although the cloth is only made from mouse's corpse. In addition they also have rational thinking about how to master a land. Those characteristics are very similar with humans'.

Mandrake's Son : We had a little skirmish with some Leafmen this morning. A rat got caught in the crossfire... so I got a new coat. It's, uh, just like yours!

Mandrake : Did you find the location of their ceremony?

Mandrake's Son : Uh...Yes, sir! It's way outside of our borders.

Mandrake : You mean their borders?The Leafmen think they can keep us contained... surround our beautiful island of rot...with their hideous green forest.

Mandrake's Son : So arrogant!

Mandrake : All in the name of balance. I'm sick of balance. No matter how much of the forest we destroy... the queen regrows it with one wave of her hand.

Mandrake's Son : She needs to be cut down! At the root!

Mandrake : Exactly. Today we'll show them. You just can't stop the rot. If the queen dies without an heir...the Leafmen can't regrow anything. The balance swings in our favor forever. Leaving you and me... rulers of a desperate, desiccated kingdom.

Mandrake's Son : I won't let you down...Dad. I know you won't.

Source: Epic Movie, minutes: 00:13:43- 00:15:04

Mandrake is the king of Boggan soldier who wants to control Moonhaven. He's willing to do anything to become the king of Moonhaven by force and kill Queen Tara. In his conversation with the children, he has a plan to foil the plans of the queen Tare silently. He is very sick of balance. For him barren and dry forest is

more beautiful if it is under his control. He does not even think if what he does can damage the habitat around the region.

This event seems to represent the existing reality. To control society and become more powerful, humans will do everything. It happens in the reality such as in civil war one and two. They are fighting for taking control of an area. They do not think if the effects of the war are very detrimental to nature. Nature here is as an object to be harmed and damaged. The only thing in humans' minds is gaining more power to control society.

Boggan soldiers started to attack Moonhaven. They become stronger troops by adding more members. In this condition Moonhaven is threatened to be damaged due to the actions of the Boggan troops.

Mandrake's Son : We had numbers, and we had the surprise part! How are we losing?

Mandrake : Patience, son. The forest wasn't grown in a day.

Mandrake's Son : But we can destroy it in one. Right?

Mandrake : Ha! That's the spirit! You take the Pod, I'll take the queen.

Mandrake's Son : Nice one!

Source: Epic Movie, minutes: 00:26:39 - 00:27:01

Mandrake and his son believe that the war will be won by them. They are very happy because they can destroy the forest in one day. So after that they can control Moonhaven. They can be more powerful but nature experiences unbalance and destruction.



Figure 3.2.2.3 Mandrake wants to Take Bud
Source: *Epic* Movie, minutes: 01.24:59

Long shot explain that Nim Galu tries to restrain Mandrake. Nim Galu wants to keep on exposing the bud with light in attempt to make it blooms. So Moonhaven forest can be preserve. However Mandrake wants to cancel on exposing the bud with light in attempt to make it blooms because he wants Moonhaven disappear and he becomes the king. The bud' color darkness which indicates that the bud is depraving.

3.3 The Impacts of Harmful Reciprocal Relationship between Human and Nature

Humans are highly benefited with the reciprocal relationship between human and nature. Human life is more secure by nature. However, on the other side, nature is increasingly destroyed because of human's behavior which cannot preserve the beauty of nature. Nature becomes the object that is harmed. According to Mufid (2010, p.47) humans become more selfish and greedy when they want to fulfill their principal commodity. Humans become greedier in exploiting nature in order to

achieve their goals. The beauty of Moonhaven is lost. Many plants and animals die which later will cause unbalance of ecosystem. The instalation of electronic devices in Moonhaven region disturbs the ecocystem arround it. The war between Mandrake and Queen Tara for fighting over certain region gives bad impact for the forest, especially the animals and plants. When all humans need are achieved, they only focus on the development of their life. They do not care with the nature. In this case humans have important role for the development of nature both directly or indirectly.

*Somebody told me once
that if you stand still
in the forest long enough
you'll see signs of
a hidden struggle
Raging between forces of life and decay
That the survival of the forest
itself depends on the outcome
And that the good guys need
all the help they can get
And that if you don't believe
it, take a close look
And if you still don't, look closer*

Source: Epic Movie, minutes: 00:00:44 - 00:01:10

In the beginning of *Epic* movie, the narrator begins with a narration about the phenomenon of natural damage. When humans are in the forest and observe the forest in short time, they do not feel the strangeness of the forest. Then when they look back and try to understand the forest, there are many events that take place in the forest. How living things in the forest are struggling to survive.

Although they are human being but each individual has a different idea in regard to nature. The relationship between humans and nature cannot be separated.

The wrong concepts people have in mind will only cause the nature becomes the victim. They will destroy the nature to get their purpose.



Figure 3.2.3.2 Mandrake kills Tara
Source: *Epic* Movie, minutes 00:27:56



Figure 3.2.3.3 Queen Tara get stabbed by Mandrake's Weapon
Source: *Epic* Movie, minutes 00:28:10

This picture tells that Boggan troops begin their attack to Moonhaven. They kill the queen to smoothen their plan. When the queen is killed, the living creatures have nothing to do to protect the area. This makes all the area of Moonhaven is under Mandrake's control and his troops. Dominance will make someone does anything.

The difference in shot size between the two pictures affects the message of which the author wants to convey to the viewers. The first picture uses long shot size in order to show the audience that Boggan troops are attacking Moonhaven. The second one employes close up size to show the expression of Queen Tara when an arrow thrusts her. The setting gives further information and effect when the queen falls down.

The queen Tara's death affects the balance of Moonhaven. They no longer have queen to keep the balance in Moonhave. Plants, animals, and other creatures in there worry about this condition.

A : The whole meadow just died. Everything was green, and now it's gone.

B : I grew up in that meadow.

C : Why isn't the queen doing anything? If anything happened to her, everything's going to rot! We're doomed! We're doomed!

D : Get a hold of yourself!

Source: Epic Movie, minutes: 00:46:48 - 00:47:01

The inhabitants in Moonhaven become panic with this damaged nature which make their life is in danger. Nature deteriorates and becomes uncontrollable. They are afraid of how their life will be if this hideous condition cannot be solved soon.

Nature will be destructed and all the inhabitants will vanish. At the beginning, they do

not know that the queen is dead. They are only wondering why the queen does not do

anything about this yet. When they know that the queen is dead the inhabitants

become anxious.



Figure 3.2.3.4 Damage of Moonhaven

Source: Epic Movie, minutes: 00:44:33

It is obviously shown in the picture that the forest is undergoing dryness and becomes infertile. The leaves fall off the tree. No creature can live there. The soil suffers from loss of essential mineral. The only thing remains is dry and withered plants. Nature is damaged because of human's activity. Human's ambition costs damaged nature.

By using long shot size, the audiences get more detailed view about the condition of the forest which used to be fertile and green but now it is damaged. Natural resources have gone and no creature is willing to live in there. The setting also has important role in the picture especially when the forest is in normal condition when it is still green and many plants and animal live there. However, now the forest is depraved, becomes infertile and is abandoned by the inhabitant.

Those evidences become criticism that is directly directed to every people. Humans have important role for developing the nature. Nature is part of them and they must use it carefully.

CHAPTER IV

CONCLUSION AND SUGGESTION

This chapter explains about the conclusion from the research which concerns about harmful reciprocal relationship between human and nature portrayed in *the Epic* movie. In addition to the conclusion, this chapter also provides some further suggestions for the next researchers who are interested in studying ecocriticism.

4.1 Conclusion

Movie is an interesting media to analyze. Many moral values are depicted in movie to criticize human phenomena. *Epic Movie* explains about environmental issues which usually happen in real life. It is important to analyze environment portrayed in movies or literary works because the result of the analysis can be wise solutions to solve environmental problems in real life.

Relationship between human and nature is not always profitable for both of them. If human cannot preserve nature, it can destroy the nature and gives bad impacts for other creatures. By using some theories such as Ecocriticism, human ecology and movie studies, it can be analyzed that many bad treatments against environment are done by many people. Humans actually have to preserve nature but they make nature becomes depraved caused by their greediness instead. The world is entering a phase where the environment is broken because of bad treatments to

environment which are done by humans. Then, it can be concluded that environmental exploitation brings many bad effects for nature.

There are many evidences which tell about harmful reciprocal relationship between human and nature. Humans only want to control nature and exploit it.

Humans exploit nature as research object without any concern about the impacts.

They also exploit nature as medium to establish power and as medium to establish modern life. Humans get advantages from the relationship because they can improve their quality of life but Moonhaven which completes with a wide variety of animals and plants becomes barren. There is no living creature because of human selfishness.

Nature becomes an object that is harmed when people get a benefit in a reciprocal relationship between them.

4.2 Suggestion

The result of this research gives messages for the readers about the importance of preserving and taking care of our environment. In addition, this animation movie can also be used as an alternative to give some information about culture and the environment. The research about environmental issue is interesting to conduct. The researcher suggests for the next researchers to use Ecocriticism theory in different movie like "*The Lorax Movie*" to show the impacts of development of technology toward nature. In this movie, it is depicted that humans create artificial natural objects such as trees which are made by plastic. Moreover they must buy fresh oxygen to respire.

REFERENCES

- (n.d). *Bab II Landasan Teori*. Pusat Apresiasi Film. Retrieved from <http://e-journal.uajy.ac.id/821/3/2TA11217.pdf> on November 09, 2014.
- Abrams, Nathan, Ian Bell and Jan Udris. (2001). *Studying film*. London: Arnold
- Barry, Peth. (2009). *Beginning Theory an Introduction to Literary and Cultural Theory* (Ed.). Manchester: Manchester University Press.
- Berman, Marshall. (1982). *All That Is Solid Melts into Air*. New York: Simon and Schuster
- Dictionary, Miriam Webster (2014). *War*. Retrieved December 20, 2014, from <http://www.i.word.com/ictionary/war>.
- Forte, Lori. Jerry Davis., & Wedge Chris. (2013). *Epic Movie*. New York: Blue Sky Studios 20th Century Fox Animation.
- Garrard, Gred. (2004). *Ecocriticism: The New Critical Idiom*. New York: Routledge.
- Glotfelty, Chery II., Fromm, Harold. (1996). *Landmarks In The Literary Ecology*. Athens and London: The University Of Georgia Press.
- Hughes, Johnson Donald. (2001). *An Environmental History of the World*: London and New York: Routledge
- Klarer, Mario. (2004). *An Introduction to Literary Studies*. Newyork: Taylor& Francis group.
- Kid's Corner. (2014). *Human and Forest* Retrieved December 20, 2014, from <http://forest.mtu.edu/kidscorner/humans.html>
- Mufid, Drs. Sofyan Anwar. (2010). *Ekologi Manusia: Dalam Perspektif Sektor Kehidupan dan Ajaran Islam*. Bandung: PT. Remaja Rosdakarya.
- Nachbar, Jack and Kevin Lause. (1992). *Popular Culture: An Introductory Text*. New York. Popular Press.
- Nelmes, Jill. (2012). *Introduction to Film Studies: Fifth Edition*. London and New York: Routledge.
- Rambo, A. Terry. (1983). *Human Ecology Research on Tropical Agroecosystems in Southeast Asia*. *Singapore Journal of Tropical Geography*3(1):86-99.

Romadhan, Rohmah. (2011). *Analyzing of Environmental Issues Using Ecocriticism in James Cameron's film "Avatar"*. S-1 Thesis English Letters Departement of Letter and Humanities Faculty. State Islamic University Syarif Hidayatullah.

Saputra, Irmawan Hadi. (2013). *Perkembangan Kehidupan pada Masa Praaksara*, Retrieved from://www.plengdut.com/2013/03/perkembangan-kehidupan-pada-masa.html on December 20, 2015.

Seitz, Matt Zotter. (2013). *Reviewing Of Epic movie* Retrieved October 20, 2014, from <http://www.rogerebert.com/reviews/Epic-animated-2013>

Stibbe, Arran (Ed). (2009). *The Handbook of Sustainability Literacy. Skills for a changing world*. Cambridge UK: Green Books

Taufiq, Ivan Gauzy. (2014). *"Forest Exploitation as Represented in the lord of the rings: the two towers movie"*. S-1 Thesis English Department of Faculty of Culture Studies, Universitas Brawijaya.

Waage, Frederick O (Ed.). (1985). *Teaching Environment Literature: Material, Methods Resources*. New York: MLA.

Wardhana, Arya Wisnu(2004). *Dampak Pencemaran Lingkungan*. Yogyakarta: Andi.

Yan, Yu (2011), *The Call of The Wild- An Eco- Critical Reading of The Man and the Sea*. Retrieved October 20, 2014, from <http://www.jourlib.org/paper/2956995#.VFxBjt2ij1U>.

BERITA ACARA BIMBINGAN SKRIPSI

1. Nama : Diya Sri Widiyanti
2. NIM : 115110107111054
3. Program Studi : Sastra Inggris
4. Topik Skripsi : Ecocriticism
5. Judul Skripsi : Harmful Reciprocal Relationship Between Human and Nature Portrayed In The *Epic* Movie.
6. Tanggal Mengajukan : 04 Oktober 2014
7. Tanggal Selesai Revisi : 04 Febuari 2015
8. Nama Pembimbing : I. Yusri Fajar, M.A.
II. Arcci Tusita, S.S, M.Hum.
9. Keterangan Konsultasi :

No.	Tanggal	Materi	Pembimbing	Paraf
1.	06 Oktober 2014	Pengajuan Judul	Pembimbing 1	
2.	08 Oktober 2014	Konsultasi Judul	Pembimbing 1	
3.	14 Oktober 2014	Pengajuan Outline Proposal	Pembimbing 1	
4.	16 Oktober 2014	Pengajuan Proposal	Pembimbing 1	
5.	29 Oktober 2014	Revisi Proposal	Pembimbing 1	
6.	05 November 2014	Revisi Proposal	Pembimbing 1	
7.	18 November 2014	ACC Seminar Proposal	Pembimbing 1	
8.	25 November 2014	ACC Seminar Proposal dengan Revisi	Pembimbing 2	
9.	02 Desember 2014	Seminar Proposal	Pembimbing 1	
10.	02 Desember 2014	Seminar Proposal	Pembimbing 2	
11.	16 Desember 2014	Revisi Proposal Lanjut Bab 3-4	Pembimbing 1	
12.	29 Desember 2014	ACC Lanjut Revisi Bab 3-4 dan Abstrak	Pembimbing 1	
13.	06 Januari 2015	Acc Seminar Hasil	Pembimbing 1	

14.	08 Januari 2015	Revisi Bab 3-4 dan Abstrak	Pembimbing 2
15.	12 Januari 2015	Acc Lanjut Revisi Bab 3-4 dan Abstrak	Pembimbing 2
16.	20 Januari 2015	Seminar Hasil	Pembimbing 1
17.	20 Januari 2015	Seminar Hasil	Pembimbing 2
18.	23 Januari 2015	Revisi Bab 1-4 dan Abstrak	Pembimbing 1
19.	26 Januari 2015	Revisi Bab 1-4 dan Abstrak	Pembimbing 2
20.	29 Januari 2015	Ujian Skripsi	Pembimbing 1
21.	29 Januari 2015	Ujian Skripsi	Pembimbing 2
22.	02 Febuari 2015	Revisi Bab 1-4 dan Abstrak	Pembimbing 1
23.	02 Febuari 2015	Revisi Bab 1-4 dan Abstrak	Pembimbing 2
24.	04 Febuari 2015	ACC Penjilidan Skripsi	Pembimbing 1
25.	04 Febuari 2015	ACC Penjilidan Skripsi	Pembimbing 2

10. Telah dievaluasi dan diuji dengan nilai :



Dosen Pembimbing I

Yusri Fajar, M.A.
NIP. 19770517 200312 1 001

Malang, 04 Febuari 2015
Dosen Pembimbing II

Arcci Tusita, S.S, M.Hum.
NIK. 840427 121 1 0347

Mengetahui,
Ketua Jurusan Bahasa dan Sastra

Ismatul Khasanah, M.Ed., Ph.D.
NIP. 19750518 200501 2 001