



UNIVERSITY OF LEEDS

This is a repository copy of *The relationship between morphological and behavioral mimicry in hover flies (Diptera: Syrphidae)*.

White Rose Research Online URL for this paper:
<http://eprints.whiterose.ac.uk/80035/>

Version: Accepted Version

Article:

Penney, HD, Hassall, C orcid.org/0000-0002-3510-0728, Skevington, JH et al. (2 more authors) (2014) The relationship between morphological and behavioral mimicry in hover flies (Diptera: Syrphidae). *The American Naturalist*, 183 (2). pp. 281-289. ISSN 0003-0147

<https://doi.org/10.1086/674612>

Reuse

Unless indicated otherwise, fulltext items are protected by copyright with all rights reserved. The copyright exception in section 29 of the Copyright, Designs and Patents Act 1988 allows the making of a single copy solely for the purpose of non-commercial research or private study within the limits of fair dealing. The publisher or other rights-holder may allow further reproduction and re-use of this version - refer to the White Rose Research Online record for this item. Where records identify the publisher as the copyright holder, users can verify any specific terms of use on the publisher's website.

Takedown

If you consider content in White Rose Research Online to be in breach of UK law, please notify us by emailing eprints@whiterose.ac.uk including the URL of the record and the reason for the withdrawal request.



eprints@whiterose.ac.uk
<https://eprints.whiterose.ac.uk/>

The relationship between morphological and behavioral mimicry in hover flies (Diptera: Syrphidae)¹

Heather D. Penney, Christopher Hassall, Jeffrey H. Skevington, Brent Lamborn & Thomas N. Sherratt

Abstract

Palatable (Batesian) mimics of unprofitable models could use behavioral mimicry to compensate for the ease with which they can be visually discriminated, or to augment an already close morphological resemblance. We evaluated these contrasting predictions by assaying the behavior of 57 field-caught species of mimetic hover flies (Diptera: Syrphidae), and quantifying their morphological similarity to a range of potential hymenopteran models. A purpose-built phylogeny for the hover flies was used to control for potential lack of independence due to shared evolutionary history. Those hover fly species that engage in behavioral mimicry (mock stinging, leg waving, wing wagging) were all large wasp mimics within the genera *Spilomyia* and *Temnostoma*. While the behavioral mimics assayed were good morphological mimics, not all good mimics were behavioral mimics. Therefore, while the behaviors may have evolved to augment good morphological mimicry, they have not been selected in all hover fly species.

Keywords: Batesian mimicry, imperfect mimicry, behavioral mimicry, deception, phylogenetic comparisons

Introduction

Batesian mimicry arises when members of a palatable species (mimics) evolve a resemblance to a noxious or otherwise defended prey species (models), and thereby gain protection from predators (Bates 1862). While Batesian mimics are often recognized through their close morphological similarity to defended models (see Ruxton et al. 2004 for a review), mimicry can also occur in other sensory modalities (Golding and Ennos 2005). Thus mimics can smell (Ceccarelli 2008; Ruxton 2009) and sound (Rowe et al. 1986; Young et al. 1999) like their models, and they may also adopt behaviors that are characteristic of their models. Behavioral mimicry has been documented in some of the best-studied mimetic complexes including the *Myrmarachne* spider-ant complex (e.g. Ceccarelli 2008), the syrphid-hymenopteran complex (e.g. Waldbauer 1970), lepidopteran complexes (e.g. Srygley 1994; Kitamura and Imafuku 2010) as well as intra-specific sexual mimics (Forbes et al. 1997) and masqueraders such as leaf or twig mimics (Bradburne 1995).

Resembling a model in more than one manner may increase the likelihood that predators will be deceived by the Batesian mimicry, and it may potentially dupe different predators that use different sensory modalities to detect their prey (Pekár et al. 2011). However, if behavioral mimicry is so beneficial then one might wonder why all mimics have not evolved such traits. Likewise, it is now widely recognised that not all Batesian mimics can be considered perfect or high fidelity mimics, and one might also wonder why natural selection has not improved this

¹ Version of record can be viewed at the publisher and should be cited as: [Penney, H.D., Hassall, C., Skevington, J.H., Lamborn, B., and Sherratt, T.N. \(2014\) The relationship between morphological and behavioral mimicry in hover flies \(Diptera: Syrphidae\), American Naturalist, 183: 281-289.](#)

resemblance (e.g. Getty 1985; Edmunds 2000; Johnstone 2002; Sherratt 2002; Chittka and Osorio 2007; Kikuchi and Pfennig 2010; Penney et al. 2012).

Given the lack of data on behavioral mimicry at a comparative level, the relationship between morphological and behavioral mimicry is particularly unclear. Nevertheless, it has been proposed repeatedly that poor mimics can use behavior to compensate for their ease of visual discriminability (Howarth et al. 2004; Gilbert 2005; Pekár et al. 2011). By contrast, behavioral mimicry might provide little selective benefit if imperfect mimics are readily visually discriminated. Instead, behavioral mimicry might be restricted to cases of good morphological mimicry, reflecting overall stronger selection for mimetic fidelity on all levels. Of course, the apparent variation in morphological mimetic perfection may be illusory and/or misleading if the potential predators of mimics and humans discriminate mimics from models in different ways (Cuthill and Bennett 1993). So, a third possibility is that there is no relationship between morphological and behavioral mimicry. Of course, if the propensity to engage in behavioral mimicry was in some way associated with the perfection of morphological mimicry as judged by humans, then this would suggest that the human-based categorization of mimetic fidelity carries wider significance to predators in general, and is not simply a reflection of human perception, as this “eye of the beholder” hypothesis implies (e.g. see Cuthill and Bennett 1993).

In this study we set out to test for an association between the indices of behavioral and morphological mimicry in hover flies (Diptera: Syrphidae), a group well known for both phenomena. In the syrphid-hymenopteran mimicry system, behavioral mimicry takes a number of different forms, which may in part be model-dependent. At its simplest, behavioral mimicry can arise through the adoption of diurnal activity patterns which serve to increase the likelihood of mimics and models co-occurring (Howarth et al. 2004). However, mimicry can also involve actively simulating aspects of a model’s behavior or morphology. For example, Golding et al. (2001) reported that the hover fly mimic *Eristalis tenax*, resembled its honeybee model in flight behavior. Moreover, wasp-mimicking hover flies have been observed to push the tip of their abdomens into the holder when grasped, a behavior that has been interpreted as an attempt to emulate a stinging insect (Waldbauer 1996). In addition, wasp-mimicking hover flies have been observed to fold their two wings and wag them in a manner similar to a four-winged hymenopteran, and wave their legs in front of their heads. This latter behavior seemingly enhances the resemblance of the fly to their hymenopteran models that have longer antennae (Waldbauer 1970), a feature now formally recognized to be important to birds when discriminating wasps from flies (Bain et al. 2007). Finally, it has been argued that hover flies sound like stinging Hymenoptera when attacked (e.g. Gaul 1952), although the evidence in both bee and wasp mimics is weak at best (Rashed et al. 2009).

The primary aim of this study was to provide a comparative test for an association between morphological and behavioral mimicry in one of the groups best known for it, using current available phylogenies to control for potential lack of independence due to shared evolutionary history. We then provide a more-nuanced analysis of the distributions of behavioral and morphological mimicry in hover flies, including an assessment of the role of model type in mediating this relationship.

Methods

Field work

Hover flies were captured as adults throughout the flying season (April to September) in 2010 between 9 am and 4 pm local time in Ontario (ON) and Quebec (QC), Canada. Our collection sites were Fletcher Wildlife Garden, Ottawa, ON (45°23'08"N, 75°42'15"W); Uxbridge, ON (44°14'30"N, 79°10'41"W); Queens Biological Field Station, Chaffey's Locks, ON (44°34'22"N, 76°20'05"W); Gatineau Park, Gatineau, QC (45°30'31"N, 75°48'59"W) and Mont Rigaud, Rigaud, QC (45°27'06"N, 74°19'33"W). To allow a wide comparison, a broad mixture of (morphologically) mimetic (including honey bee mimics, bumble bee mimics, and wasp mimics) and non-mimetic hover fly species were caught and tested, noting the presence or absence of key behaviors. For consistency, only behavioral data from captured flies were included in our comparative analysis, although the behavioral responses were so readily elicited that they were often evident in specimens both before and after capture.

On capture, specimens were placed in small, clear plastic vials and kept until they were evaluated (within 10 minutes on days above 30°C, but within 2 hours maximum on cooler days). On testing, each fly was placed in a mesh cage (30x30x30 cm), and was allowed 5 minutes to settle. After this period, no qualitative differences were evident between our field and cage-observed behaviors. Following acclimation, the hover flies were assayed by first presenting them with a simulated avian predator (a single stuffed blue jay head – *Cyanocitta cristata*), although even passing a shadow over the flies would often produce the same response. Specimens were then prodded with the beak of the jay up to five times (with a few seconds delay between prods), and all behaviors of the fly (both incidental and those that arose as direct response to the stimulus) were recorded.

The behavioral responses of the flies were classified as follows. A “mock sting” was defined as the specimen tapping the tip of the abdomen onto the beak or surface of the cage in an aggressive manner. If the fly did not exhibit the mock sting when faced with the avian predator, it was lightly grasped between the thumb and forefinger of a researcher (HDP in all cases, for consistency) in an attempt to elicit the behavior. “Wing wagging” was defined as holding and wagging the wings in a wasp-like rather than fly-like manner. “Leg waving” was defined as the specimen resting on their mid and hind legs and waving their fore legs in front of their head. The leg waving movement was clearly distinct from a washing movement. When observations were complete, the specimens were killed (using either cyanide or freezing), pinned, and identified. When possible, specimens were identified to species level using morphology or, in a few cases, genotyping (in genera such as *Syrphus* and *Sphaerophoria* identification to species in females is not possible with the current key).

Quantification of mimetic similarity

We obtained estimates of the mimetic fidelity of representatives of 56 of the 57 recognized hover fly species that were behaviorally assayed during the field season, to five different potential hymenopteran models (see below). Our approach employed a simple human ranking system which correlates well both with an avian assessment of hover fly mimetic similarity and a multidimensional measure of morphological similarity of hover flies to their hymenopteran

models (Penney et al. 2012). While humans and birds have different visual systems, there is no evidence of a widespread UV component to either wasp or hover fly mimetic patterns (Gilbert 2005), which may explain why quantifications of mimetic similarity by pigeons were broadly consistent when pigeons were presented with naturally lit specimens of hover flies (Green et al. 1999) compared to their projected images (Dittrich et al. 1993).

Those hover fly species assayed in the field that could only be identified to genera were represented by several congeneric species in our similarity assessments, ultimately generating mimetic fidelity estimates for 77 hover fly species. Although we could not reliably use these additional species when testing for an association between behavioral and morphological mimicry, we did use this information in our tests of rater consistency and model-dependent similarities (see below).

Photographs of the dorsal view of three different pinned individuals from each of the 77 hover fly species were taken from specimens stored at the Canadian National Collection of Insects, Arachnids and Nematodes (CNC) in Ottawa, ON. In addition, three photographs of members of the five separate hymenopteran species that may serve as models of these hover flies were taken: the honeybee *Apis mellifera*, the common wasp *Vespula alascensis*, the buff-tailed bumblebee *Bombus terrestris*, the eastern bumblebee *Bombus impatiens* and the bald-faced hornet *Dolichovespula maculata* (see Online Appendix 1). All of the photographs were taken using a Canon EO5 50D with a Canon macro lens (100 mm). Illumination was provided by an 80 LED microscope ring light (KD-200).

Estimates of the extent of mimetic fidelity of mimics to models were conducted in three participant blocks with 24 participants in block 1 and 10 participants in blocks 2 and 3 (44 in total). Each block involved projecting a photo of each of the 77 hover fly species (presented in random order) alongside one photo for each of the five models for comparison. The species photos for both models and mimics, and the order of presentation of mimics, were changed for each block. Human participants were asked to rank each hover fly photograph on a scale of 1 (very poor mimic) to 10 (very good mimic) separately for each of the 5 potential models shown. To produce a mimetic fidelity score, we first identified the model type to which the potential mimic bore the closest resemblance (based on overall mean score for images of that species). We then noted the extent of mimetic fidelity to that model based on the mean score. It can be extremely challenging to match mimic to model (if a match exists at all, Edmunds 2000) in systems where the phenotypic diversity of mimics and models is exceptionally high (Wilson et al. 2013). Our limitation of five models, albeit with relatively high phenotypic diversity, was therefore out of necessity rather than desire.

Comparative analysis

The strength of the association between the average mimetic fidelity of a species and whether it engaged in any of our assayed behaviors was first evaluated using logistic regression. However, a group of species may all be good morphological mimics and all may engage in behavioral mimicry, but this commonality may arise from a shared common ancestor rather than as a result of independently driven relationships. We therefore analysed our results in the

context of the likely phylogenetic relationship among species, directly accounting for any lack of statistical independence arising from common ancestry. To do so, we first generated a molecular phylogeny for 55 of the 57 hover fly species tested for behavior using variation at the cytochrome oxidase c subunit I (COI) – see Penney et al. (2012). DNA extraction and sequencing were performed in house and at the Canadian Centre for DNA Barcoding (see Online Appendix 2 for GenBank accession numbers of specimens used to construct the phylogeny). The resultant phylogeny included most major syrphid clades (Figure 1). Reassuringly, all species fell within their prospective genera and our tree was largely congruent with other published results that used nuclear loci (Skevington and Yeates 2000; Ståhls et al. 2003; Mengual et al. 2008). We then tested for a phylogenetic signal in behavioral mimicry and mimetic fidelity (the highest rating given to each species) by comparing the phylogeny based on COI with a null model in which all branches were equal in a likelihood ratio test (see Hossie et al. 2013 for more details). Finally, to test for an association between mimetic fidelity and behavior while controlling for phylogeny we fitted Monte Carlo Markov Chain generalised linear models, using phylogenetic covariance matrices derived from the phylogeny described above. Model fitting was implemented using the MCMCglmm package in R (R: Development Core Team 2013) - for details on methods, see Hadfield (2010). Using the above complementary approaches, we can evaluate the impact of accounting for phylogeny on our findings and provide a more robust analysis of the data. Note that one fewer species was available for the phylogenetically controlled analysis (n=55, vs. n=56 for the logistic regression without phylogenetic control) due to the lack of COI sequence for *Temnostoma obscurum*.

Results

We caught and assayed 359 hover fly specimens. Of those specimens, 320 individuals were identified to species, giving 57 species in total. The remaining 39 specimens for which species-level identification was not possible were from the genera *Eupeodes* (n=1 specimen), *Melangyna* (n=1), *Platycheirus* (n=9), *Sphaerophoria* (n=10) and *Syrphus* (n=18). Online Appendix 3 lists the sample sizes of each identified species tested along with details of their behavior. There was no within-species variation of behavioral mimics: if one individual did or did not engage in the behavior, then all individuals of the species did the same. Of the 57 species assayed (and 39 additional specimens of known genera), there were only six species (*Spilomyia sayi*, *S. fusca*, *S. longicornis*, *Temnostoma alternans*, *T. barberi*, and *T. obscurum*) that exhibited any evidence of behavioral mimicry and all six of these hover fly species mimic wasps (as determined by our human ranking system). Five of the six mimetic species that engaged in behavioral mimicry exhibited all three behaviors, but *S. sayi* (13 specimens tested) did not engage in leg waving. The consistency in association between different forms of behavioral mimicry was highly significant. For example, of the 43 hover fly species ultimately classed as wasp mimics, the propensity to engage in wing wagging (6 species) was significantly associated with the propensity to engage in mock stinging ($G_1 = 34.754$, $P < 0.001$).

Intra-class correlation coefficients for ratings of similarity of 77 hover fly mimics to 5 hymenopteran models by all 44 human raters, were calculated using the `icc` function in the `irr` package (Gamer et al. 2012) in R. All tests showed significant ($P < 0.001$) consistency among raters (high ratings by one coder for a given hover fly species correspond with high ratings with

other) and agreement in absolute terms (Hallgren 2012) between raters (see Online Appendix 4). Hover fly species differed in their mean maximum similarity according to model, with hover flies classified as bumble bee mimics rated as the highest fidelity mimics (ANOVA $F_{3,73} = 5.68$, $P = 0.0015$, Online Appendix 5).

A comparison of the distributions of mimetic similarity and behavioral mimicry in both informative phylogenetic trees and control trees (where all branches are the same) showed that there was significant phylogenetic autocorrelation in behavioral mimicry ($\lambda=1$, $p=0.002$) but not in mimetic similarity ($\lambda<0.001$, $p=1.000$). Hence related species were more likely to share the same propensity to engage in behavioral mimicry, but not necessarily similar degrees of mimetic fidelity. Logistic regression models generally showed no association between behavioral mimicry and the mimetic fidelity of species to their most-similar model (Table 1, Figure 2). However, since only wasp mimics exhibited the behavior, the data were reanalysed to assess the effects of similarity to the nearest wasp model (*D. maculata* or *V. alascensis*). This second analysis was statistically significant, suggesting a greater likelihood of behavioral mimicry in species that more closely resembled wasps (Table 1), particularly when accounting for phylogeny. Finally, we consider the same relationship between behavioral and morphological mimicry using only those hover flies that were rated as being most similar to wasps (either *V. alascensis* or *D. maculata*, $n=42$ with phylogenetic control). Here, the trend for greater likelihood of behavioral mimicry at higher levels of morphological mimicry approached significance ($p=0.077$, Table 1).

Discussion

After systematically evaluating the behavior of a wide range of field caught hover flies and empirically evaluating their morphological similarity to a variety of hymenopteran models, we can confidently reject the hypothesis that the leg waving, wing wagging and mock-stinging behavior of hover flies is primarily selected to compensate for poor visual mimicry. Instead we conclude that there is evidence for a positive association between mimetic fidelity and these behavioral traits, even after controlling for potential lack of independence between species due to shared phylogeny. However, the pattern was only statistically significant when evaluating the extent of similarity of hover flies to wasps. Below, we discuss reasons why the relationship between morphological and behavioral mimicry might be clearer when considering only wasp mimicry, before going on to discuss the wider implications of the positive association.

The hover flies that were ultimately classified as bee mimics by human observers did not engage in any of the behavioral traits we assayed for (leg waving, wing wagging, mock sting). This observation is consistent with Waldbauer (1970)'s earlier proposal that hover flies which mimic bees neither have, nor give the appearance of having, long antennae. Hymenopteran models clearly vary in appearance, but a simple reason for the absence of leg waving in bee mimics may be that many of the common bee models lack the long antennae of wasps, so there may be less value in portraying long antennae. In addition, many bees do not wag their wings in quite the same manner as wasps, and there is little evidence that birds find the sting of a bee a significant deterrent (Gilbert 2005). Collectively therefore, there may have been little additional selection pressure to adopt behavioral mimicry in this group of mimics, because their models do

not exhibit sufficiently characteristic behaviors and/or because the behaviors themselves do not evoke aversive responses in observers.

Our work also confirms, to human eyes at least, that bee mimics are among the highest fidelity mimics (Gilbert 2005). This close mimicry of bee mimics may well have arisen as a consequence of the models' lack of averseness which requires close similarity before a reasonable high degree of protection from predators is achieved (Sherratt 2002; Gilbert 2005). However, bumblebee models and their mimics both have a hairy texture (Online Appendix 1), and simply sharing this characteristic may go some way to rendering a close visual similarity. Whatever the reason for the close similarity, given the lack of behavioral mimicry in bee mimics and their high fidelity, it is not surprising that the relationship between behavioral and morphological mimicry is most evident when we consider wasp mimicry alone.

Here we have employed a standardised field-based assay to generate an extensive list of hover fly species that engage in three specific forms of behavioral mimicry, but also those hover fly species that do not behave in this way. Our general, albeit tentative, evidence that the propensity to engage in behavioral mimicry is related to the extent of mimetic fidelity to wasps confirms earlier qualitative suggestions of both Nicholson (1927) and Waldbauer (1970) who noted that behavioral mimicry is generally found in those species in which the overall mimetic resemblance to Hymenoptera is the most highly developed. As in our study, Waldbauer (1970) reported mimicry of antennae through leg waving in just two hover fly genera namely *Spilomyia* (*S. hamifera*, *S. fusca*, *S. longicornis*, *S. quadrifasciata*) and *Temnostoma* (*T. balyras*, *T. pictulum*, *T. trifasciatum*). Hover flies from the genera *Spilomyia* and *Temnostoma* are generally regarded as good mimics and there were no examples of a behavioral mimic that received a low human mimetic fidelity ranking. To humans therefore, behavioral mimics were always good or intermediate mimics, but not all good or intermediate mimics were behavioral mimics. For example, the hover fly *Syrphus ribesii* appears as a good mimic (Online Appendix 1) and yet despite testing 26 field-caught individuals, none showed any form of behavioral mimicry.

Our three distinct behaviors (leg waving, wing wagging, mock stinging) were all significantly associated with one another, suggesting the evolution of an adaptive suite of behaviors as a response to selection. The one exception to this pattern was *S. sayi* which wagged its wings and mock stung, but did not leg wave. Intriguingly, *S. sayi* had longer antennae ($0.437 \text{ cm} \pm 0.008$ (SE)) than the other members of the genus that showed leg waving (*S. fusca* $0.266 \text{ cm} \pm 0.002$; *S. longicornis* $0.318 \text{ cm} \pm 0.007$), suggesting that the behavior may be of less value to *S. sayi* because it already has relatively large antennae. Nevertheless, the six behavioral mimics all shared a common trait in the dark pigmentation of the tibia and tarsi of the forelegs, which were a different colour to the mid- and hindlegs (Figure 3). While other species in the study exhibit wide variation in the colour of legs (both different legs and segments within legs), the *Spilomyia* and *Temnostoma* species were the only species of our 57 surveyed to exhibit this particular contrasting pattern. Waldbauer (1970) likewise noted that in each of the four *Spilomyia* species he investigated the front tarsi and a part of the front tibiae were dark. Given that the antennae of models are frequently dark, it is not unreasonable to suggest that the

morphology and behavior are associated. Indeed, a morphological examination might provide one of the first clues as to whether a species is likely to engage in behavioral mimicry.

Overall, we find that behavioural mimicry does not compensate for poor morphological mimicry in hover flies but it may supplement good morphological mimicry in at least some species. One might expect mimetic behaviours to readily evolve as an additional line of defence in any mimetic species if it serves to inhibit predator attack, perhaps by further convincing predators they are unprofitable. Therefore, it is an open question as to why not all good morphological mimics have evolved such behavioral traits.

Acknowledgements

We thank the Fletcher Wildlife Garden, the National Capital Commission and Queens University Biological Station for access to land. The human aspect of this research was approved by the Biological Sciences Faculty Research Ethics Committee at the University of Leeds and the Carleton University Research Ethics Committee, and conducted according to the guidelines set out in the Tri-Council Policy Statement on Ethical Conduct for Research Involving Humans; subjects gave informed consent. The work was supported by grants to T.N.S. from the Natural Sciences and Engineering Research Council of Canada (NSERC) and to J.H.S. from Agriculture and Agri-Food Canada, the Canadian Centre for DNA Barcoding and NSERC CANPOLIN.

References

- Bain, R. S., A. Rashed, V. J. Cowper, F. S. Gilbert, and T. N. Sherratt. 2007. The key mimetic features of hoverflies through avian eyes. *Proceedings of the Royal Society B-Biological Sciences* 274:1949-1954.
- Bates, H. W. 1862. Contributions to an insect fauna of the Amazon valley. *Lepidoptera: Heliconidae*. *Transactions of the Linnean Society of London* 23:495-566.
- Bradburne, R. 1995. Water balance in phasmids and other insects. *Phasmid Studies* 4.
- Ceccarelli, F. S. 2008. Behavioural mimicry in Myrmarachne species (Araneae, Salticidae) from North Queensland, Australia. *The Journal of Arachnology* 36:344-351.
- Chittka, L., and D. Osorio. 2007. Cognitive dimensions of predator responses to imperfect mimicry. *PLoS Biol* 5: e339. doi:10.1371/journal.pbio.0050339.
- Cuthill, I. C., and A. T. D. Bennett. 1993. Mimicry and the eye of the beholder. *Proceedings of the Royal Society of London Series B-Biological Sciences* 253:203-204.
- Dittrich, W., F. Gilbert, P. Green, P. McGregor, and D. Grewcock. 1993. Imperfect mimicry - a pigeons perspective. *Proceedings of the Royal Society of London Series B-Biological Sciences* 251:195-200.
- Edmunds, M. 2000. Why are there good and poor mimics? *Biological Journal of the Linnean Society* 70:459-466.
- Forbes, M. R., G. Schalk, J. G. Miller, and J. M. L. Richardson. 1997. Male-female morph interactions in the damselfly *Nehalennia irene* (Hagen). *Canadian Journal of Zoology* 75:253-260.
- Gamer, M., J. Lemon, I. Fellows, and P. Singh. 2012. irr: Various Coefficients of Interrater Reliability and Agreement., R package version 0.84. <http://CRAN.R-project.org/package=irr>.

- Gaul, A. T. 1952. Auto mimicry: an adjunct to color mimicry. *Psyche* 59:82-83.
- Getty, T. 1985. Discriminability and the sigmoid functional response - how optimal foragers could stabilize model-mimic complexes. *American Naturalist* 125:239-256.
- Gilbert, F. 2005. The evolution of imperfect mimicry, Pages 231-288 in G. J. Holloway, and J. Rolff, eds. *Insect Evolutionary Ecology*. Wallingford, UK, CABI.
- Golding, Y. C., and A. R. Ennos. 2005. Biomechanics and behavioural mimicry in insects. in A. Herrel, T. Speck, and N. P. Rowe, eds. *Ecology and biomechanics: a mechanical approach to the ecology of animals and plants*. Boca Raton, Florida, USA, Taylor & Francis.
- Golding, Y. C., A. R. Ennos, and M. Edmunds. 2001. Similarity in flight behaviour between the honeybee *Apis mellifera* (Hymenoptera: apidae) and its presumed mimic, the dronefly *Eristalis tenax* (Diptera: Syrphidae). *Journal of Experimental Biology* 204:139-145.
- Green, P.R., Gentle, L., Peake, T.M., Scudamore, R.E., McGregor, P.K., Gilbert, F. and W. Dittrich. 1999. Conditioning pigeons to discriminate naturally lit insect specimens. *Behavioural Processes* 46: 97-102.
- Hadfield, J.D. 2010. MCMC methods for multi-response generalized linear mixed models: The MCMCgmm R Package. *Journal of Statistical Software* 33: 1-22.
- Hallgren, K. A. 2012. Computing inter-rater reliability for observational data: an overview and tutorial *Tutorials in Quantitative Methods for Psychology* 8:23-34.
- Hossie, T.J., Hassall, C., Knee, W. and T. N. Sherratt. 2013. Species with a chemical defence, but not chemical offence, live longer. *Journal of Evolutionary Biology* doi: 10.1111/jeb.12143.
- Howarth, B., M. Edmunds, and F. Gilbert. 2004. Does the abundance of hoverfly (Syrphidae) mimics depend on the numbers of their hymenopteran models? *Evolution* 58:367-375.
- Johnstone, R. A. 2002. The evolution of inaccurate mimics. *Nature* 418:524-526.
- Kikuchi, D. W., and D. W. Pfennig. 2010. Predator cognition permits imperfect coral snake mimicry. *American Naturalist* 176:830-834.
- Kitamura, T., and M. Imafuku. 2010. Behavioral Batesian mimicry involving intraspecific polymorphism in the butterfly *Papilio polytes*. *Zoological Science* 27:217-221.
- Mengual, X., Ståhls, G. and Rojo, S. 2008. First phylogeny of predatory flower flies (Diptera, Syrphidae, Syrphinae) using mitochondrial COI and nuclear 28S rRNA genes: conflict and congruence with the concurrent tribal classification. *Cladistics* 24: 543-562.
- Nicholson, A. J. 1927. Presidential Address. A new theory of mimicry in insects. *Australian Zoologist* 5:10-24.
- Pekár, S., M. Jarab, L. Fromhage, and M. E. Herberstein. 2011. Is the evolution of inaccurate mimicry a result of selection by a suite of predators? A case study using myrmecomorphic spiders. *The American Naturalist* 178:124-134.
- Penney, H. D., C. Hassall, J. H. Skevington, K. R. Abbott, and T. N. Sherratt. 2012. A comparative analysis of the evolution of imperfect mimicry. *Nature* 483:461-466.
- R: Development Core Team. 2013, R: A language and environment for statistical computing. Vienna, Austria, R Foundation for Statistical Computing. ISBN 3-900051-07-0, URL <http://www.R-project.org/>.

- Rashed, A., M. I. Khan, J. W. Dawson, J. E. Yack, and T. N. Sherratt. 2009. Do hoverflies (Diptera: Syrphidae) sound like the Hymenoptera they morphologically resemble? *Behav. Ecol.* 20:396-402.
- Rowe, M. P., R. G. Coss, and D. H. Owings. 1986. Rattlesnake rattles and burrowing owl hisses - a case of acoustic Batesian mimicry. *Ethology* 72:53-71.
- Ruxton, G. D. 2009. Non-visual crypsis: a review of the empirical evidence for camouflage to senses other than vision. *Philosophical Transactions of the Royal Society B: Biological Sciences* 364:549-557.
- Ruxton, G. D., T. N. Sherratt, and M. P. Speed. 2004. *Avoiding Attack: The Evolutionary Ecology of Crypsis, Warning Signals and Mimicry*. Oxford, Oxford University Press.
- Sherratt, T. N. 2002. The evolution of imperfect mimicry. *Behavioral Ecology* 13:821-826.
- Skevington, J. H., and D. K. Yeates. 2000. Phylogeny of the Syrphoidea (Diptera) inferred from mtDNA sequences and morphology with particular reference to classification of the Pipunculidae (Diptera). *Molecular Phylogenetics and Evolution* 16:212-224.
- Srygley, R. B. 1994. Locomotor mimicry in butterflies - the associations of positions of centers of mass among groups of mimetic, unprofitable prey. *Philosophical Transactions of the Royal Society of London Series B-Biological Sciences* 343:145-155.
- Ståhls, G., H. Hippa, G. Rotheray, J. Muona, and F. Gilbert. 2003. Phylogeny of Syrphidae (Diptera) inferred from combined analysis of molecular and morphological characters. *Systematic Entomology* 28:433-450.
- Waldbauer, G. P. 1970. Mimicry of hymenopteran antennae by Syrphidae. *Psyche* 77:45-49.
- Waldbauer, G. P. 1996, *Insects Through the Seasons*. Cambridge, Massachusetts, Harvard University Press.
- Wilson, J. S., J. P. Jahner, K. A. Williams, and M. L. Forister. 2013. Ecological and evolutionary processes drive the origin and maintenance of imperfect mimicry. *PLoS ONE* 8:e61610.
- Young, B. A., J. Solomon, and G. Abishahin. 1999. How many ways can a snake growl? The morphology of sound production in *Ptyas mucosus* and its potential mimicry of *Ophiophagus*. *Herpetological Journal* 9:89-94.

Table 1. Relationships between behavioral mimicry and mimetic similarity (either the greatest similarity to any hymenopteran model, or the greatest similarity to either of the two wasp models, “wasp similarity”). MCMCglmm models incorporate phylogenetic autocorrelation and logistic regression models do not. In each of the three analyses, the logistic regression without phylogenetic information incorporated one additional species, *Temnostoma obscurum*, which was assayed for behavioral mimicry and mimetic similarity but for which genetic data were not available. The removal of this species from the logistic regression to give the same set of species in both analyses does not qualitatively affect the results (max similarity: $z=1.289$, $p=0.198$; wasp similarity: $z=1.861$, $p=0.063$; wasp mimics only: $z=1.547$, $p=0.122$).

	Method	Predictor	Parameter estimate	P
Overall similarity	MCMCglmm (n=55)	Intercept	-5379	0.020
		Max similarity	528	0.152
	Logistic regression (n=56)	Intercept	-4.830	0.093
		Max similarity	0.444	0.327
Wasp similarity	MCMCglmm (n=55)	Intercept	-4778	0.002
		Wasp similarity	570	0.019
	Logistic regression (n=56)	Intercept	-7.166	0.021
		Wasp similarity	0.859	0.082
Wasp mimics only	MCMCglmm (n=42)	Intercept	-4613	0.010
		Wasp similarity	541	0.077
	Logistic regression (n=43)	Intercept	-5.903	0.075
		Wasp similarity	1.287	0.198

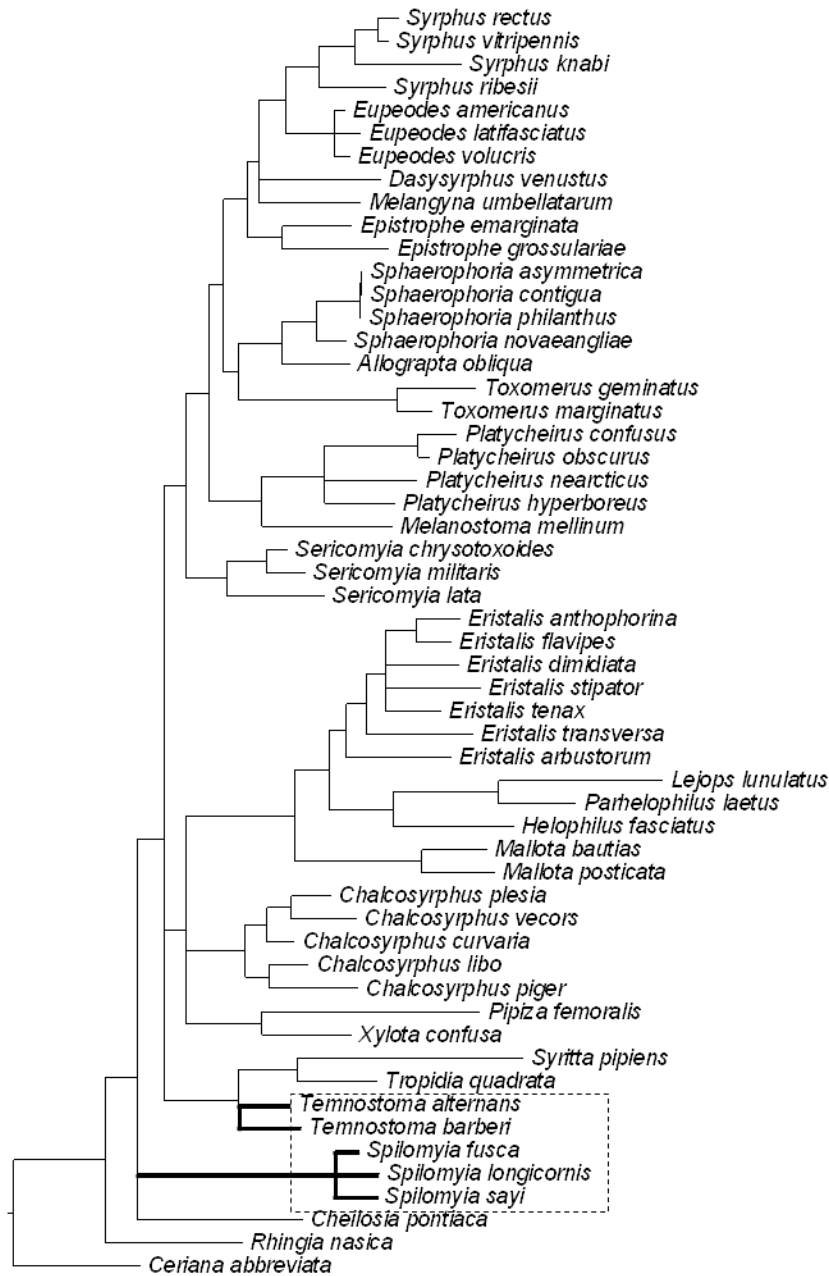


Figure 1. Phylogenetic tree of 55 field-tested hover fly species with behavioral mimics (those that wing wag, leg wave or mock sting) highlighted in bold within the dotted box. Note that while the tree has been oriented to show behavioral mimics within one box, the genera *Temnostoma* and *Spilomyia* are not sister taxa (e.g. see Ståhls et al. 2003).

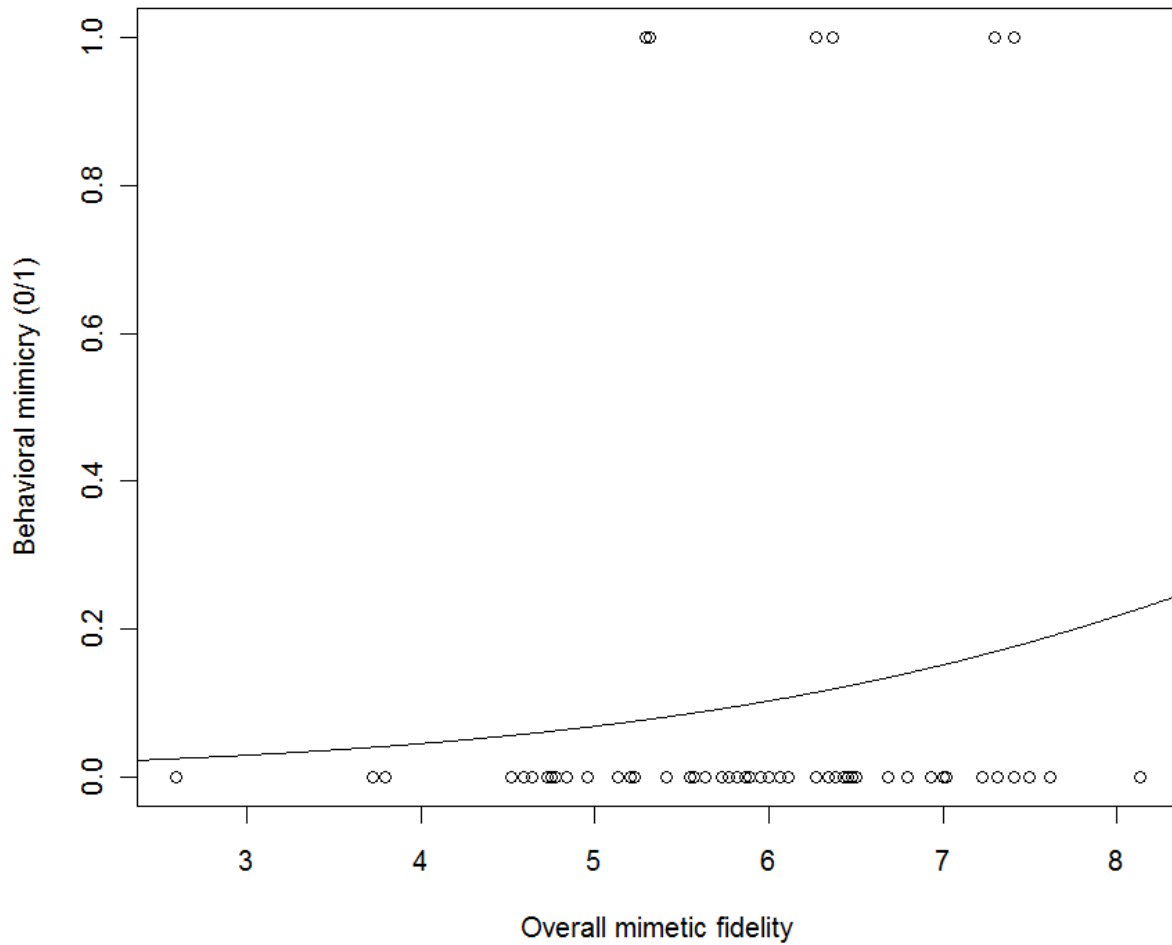


Figure 2. The relationship between the mean mimetic fidelity of a species to its closest model and whether or not it is a behavioral mimic. Behavioral mimics had relatively high mimetic fidelity (to wasps), but there were species with high mimetic fidelity that did not exhibit the behavior. Line shows the fit of a logistic regression model assuming phylogenetic independence.

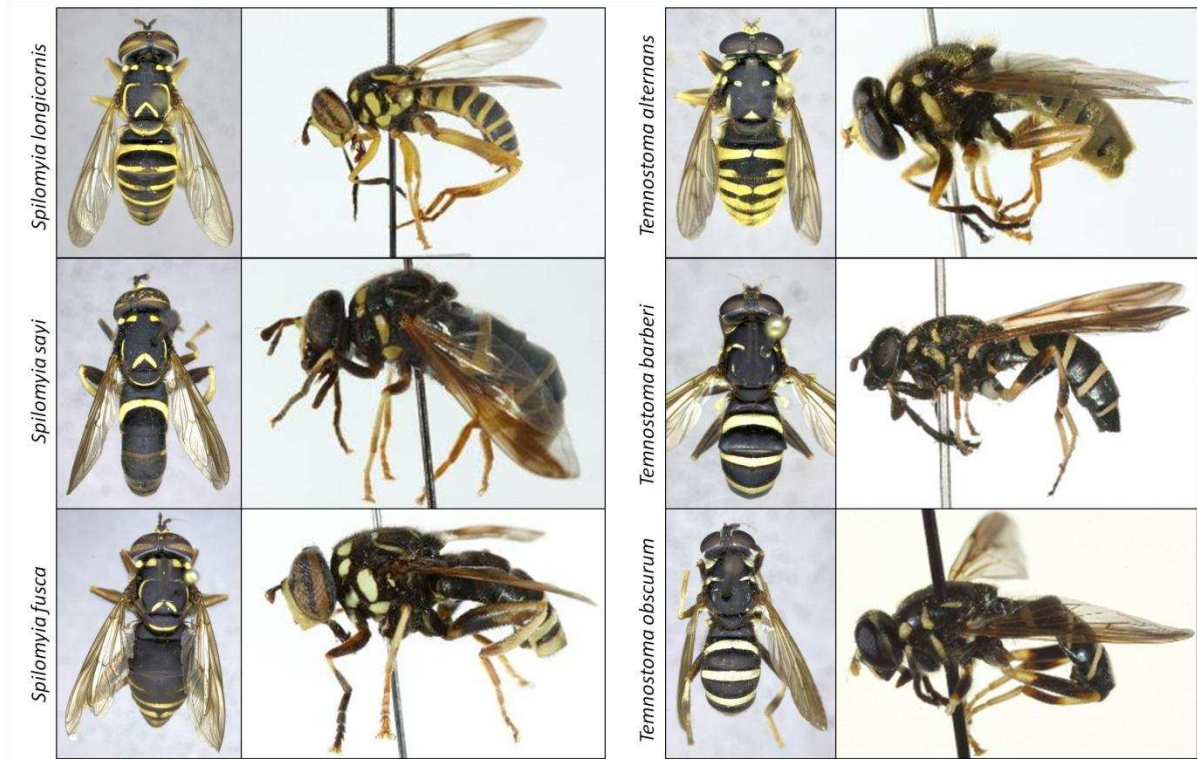


Figure 3. Proposed morphological adaptations to behavioral mimicry in six hover flies (Diptera: Syrphidae) exhibiting behavioral mimicry. Note in each of the lateral views that all behavioral mimics possess heavily-pigmented forelegs. Dorsal view photographs are by Brent Lamborn, lateral view photographs are by CNC/BIO Photography Group, Biodiversity Institute of Ontario.

Online Supplementary Appendices

The relationship between morphological and behavioral mimicry in hover flies (Diptera: Syrphidae)

Heather D. Penney, Christopher Hassall, Jeffrey H. Skevington, Brent Lamborn & Thomas N. Sherratt

Appendix 1. A standard presentation of a hover fly (*Syrphus ribesii*) along with five potential models (left to right: *Apis mellifera*, *Bombus impatiens*, *Bombus terrestris*, *Dolichovespula maculata*, *Vespula alascensis*).



Appendix 2. GenBank accession numbers and Canadian National Collection unique identifiers for specimens used to construct the phylogeny.

Species	Unique Identifier	GenBank Number
<i>Allograpta obliqua</i>	CNC DIPTERA 11743	KC900491
<i>Ceriana abbreviata</i>	CNC DIPTERA 37873	KC900433
<i>Chalcosyrphus curvaria</i>	CNC DIPTERA 38022	KC900488
<i>Chalcosyrphus libo</i>	CNC DIPTERA 647	KC900498
<i>Chalcosyrphus piger</i>	JSS-15350	KC900460
<i>Chalcosyrphus plesia</i>	CNC DIPTERA 40866	KC900448
<i>Chalcosyrphus vecors</i>	CNC DIPTERA 40974	KC900454
<i>Cheilosia pontiaca</i>	CNC DIPTERA 101552	KC900496
<i>Dasysyrphus venustus</i>	CNCD 30893	HQ577348
<i>Epistrophe emarginata</i>	CNC DIPTERA 103074	JN991975
<i>Epistrophe grossulariae</i>	CNC DIPTERA 105425	KC900427
<i>Eristalis anthophorina</i>	CNC DIPTERA 101997	KC900462
<i>Eristalis arbustorum</i>	CNCD6652	KC900447
<i>Eristalis dimidiata</i>	CNC DIPTERA 67123	KC900429
<i>Eristalis flavipes</i>	CNC DIPTERA 56765	KC900476
<i>Eristalis stipator</i>	CNC DIPTERA 1592	KC900461
<i>Eristalis tenax</i>	JSS-16952	KC900459
<i>Eristalis transversa</i>	CNC DIPTERA 102012	KC900430
<i>Eupeodes americanus</i>	CNC DIPTERA 11194	KC900495
<i>Eupeodes latifasciatus</i>	CNCD9199	KC900451
<i>Eupeodes volucris</i>	HP211	KC900434
<i>Helophilus fasciatus</i>	CNC DIPTERA 39802	KC900443
<i>Lejops lunulatus</i>	CNC DIPTERA 44807	KC900442
<i>Mallota bautias</i>	JSS18768	KC900487
<i>Mallota posticata</i>	CNC DIPTERA 45552	KC900456
<i>Melangyna umbellatarum</i>	CNC DIPTERA 105726	KC900446
<i>Melanostoma mellinum</i>	CNCD9349	KC900435
<i>Parhelophilus laetus</i>	CNC DIPTERA 47694	KC900472
<i>Pipiza femoralis</i>	CNC DIPTERA 48205	KC900441
<i>Platycheirus confusus</i>	CNC DIPTERA 25175	KC900449
<i>Platycheirus hyperboreus</i>	CNC DIPTERA 26022	KC900439
<i>Platycheirus nearcticus</i>	CNC DIPTERA 27310	KC900428
<i>Platycheirus obscurus</i>	CNCD11206	KC900463
<i>Rhingia nasica</i>	JSS18895	KC900465
<i>Sericomyia chrysotoxoides</i>	CNC DIPTERA 66	KC900450
<i>Sericomyia lata</i>	CNC DIPTERA 33901	KC900477
<i>Sericomyia militaris</i>	CNC DIPTERA 30237	KC900484
<i>Sphaerophoria asymmetrica</i>	CNC DIPTERA 101522	KC900483
<i>Sphaerophoria contigua</i>	CNC DIPTERA 75676	KC900440
<i>Sphaerophoria novaeangliae</i>	CNC DIPTERA 76214	KC900486
<i>Sphaerophoria philanthus</i>	HP177	KC900490

<i>Spilomyia fusca</i>	CNC DIPTERA 49700	KC900493
<i>Spilomyia longicornis</i>	CNC DIPTERA 49784	JN992036
<i>Spilomyia sayi</i>	CNC DIPTERA 50934	KC900444
<i>Syrpitta pipiens</i>	CNC DIPTERA 106560	KC900458
<i>Syrphus knabi</i>	CNC DIPTERA 78728	KC900475
<i>Syrphus rectus</i>	CNC DIPTERA 80057	KC900464
<i>Syrphus ribesii</i>	CHU06-SYR-103	KC900426
<i>Syrphus vitripennis</i>	CNC DIPTERA 105797	KC900478
<i>Temnostoma alternans</i>	CNC DIPTERA 54108	JN992045
<i>Temnostoma barberi</i>	CNCD-2203	KC900489
<i>Toxomerus geminatus</i>	CNC DIPTERA 106058	KC900492
<i>Toxomerus marginatus</i>	CHU06-SYR-074	KC900453
<i>Tropidia quadrata</i>	CNC DIPTERA 55141	KC900467
<i>Xylota confusa</i>	CNC DIPTERA 103101	KC900468

Appendix 3. Species list (n=57) for hover flies (Diptera: Syrphidae) that were assayed for behavioral mimicry. Also shown are (i) the hymenopteran model which each species most closely resembled (AM=*Apis mellifera*, VA=*Vespula alascensis*, BT=*Bombus terrestris*, DM=*Dolichovespula maculata*, or BI=*Bombus impatiens*), (ii) the similarity to that model (out of 10) with standard error, (iii) the greatest similarity to either of the wasp models (*Vespula alascensis* or *Dolichovespula maculata*) with standard error, (iv) the sample size ("N"), and whether or not the species exhibited behavioral mimicry. Behaviors are designated as "ww" for wing-wagging, "lw" for leg-waving, and "ms" for "mock sting".

Species	Genetic data	Closest model	Max similarity	Max similarity SE	Wasp similarity	Wasp similarity SE	N	Behavioral mimicry
<i>Allograpta obliqua</i>	Yes	VA	3.795	0.238	3.795	0.238	7	No
<i>Ceriana abbreviata</i>	Yes	DM	6.068	0.231	6.068	0.231	1	No
<i>Chalcosyrphus curvaria</i>	Yes	DM	4.955	0.294	4.955	0.294	5	No
<i>Chalcosyrphus libo</i>	Yes	DM	2.591	0.226	2.591	0.226	1	No
<i>Chalcosyrphus piger</i>	Yes	DM	4.750	0.246	4.750	0.246	3	No
<i>Chalcosyrphus plesia</i>	Yes	DM	6.386	0.232	6.386	0.232	1	No
<i>Chalcosyrphus vecors</i>	Yes	DM	6.000	0.265	6.000	0.265	1	No
<i>Cheilosia pontiaca</i>	Yes	DM	5.886	0.285	5.886	0.285	6	No
<i>Dasysyrphus venustus</i>	Yes	VA	6.432	0.246	6.432	0.246	2	No
<i>Epistrophe emarginata</i>	Yes	VA	7.614	0.183	7.614	0.183	13	No
<i>Epistrophe grossulariae</i>	Yes	VA	6.341	0.225	6.341	0.225	7	No
<i>Eristalis anthophorina</i>	Yes	BI	7.409	0.156	3.295	0.205	2	No
<i>Eristalis arbustorum</i>	Yes	AM	5.818	0.194	3.909	0.220	17	No
<i>Eristalis dimidiata</i>	Yes	AM	5.864	0.219	5.068	0.300	1	No
<i>Eristalis flavipes</i>	Yes	BI	7.318	0.180	2.114	0.171	11	No
<i>Eristalis stipator</i>	Yes	AM	5.773	0.250	4.114	0.241	1	No
<i>Eristalis tenax</i>	Yes	AM	7.500	0.206	5.023	0.235	12	No
<i>Eristalis transversa</i>	Yes	AM	5.545	0.223	4.773	0.221	7	No
<i>Eupeodes americanus</i>	Yes	VA	7.023	0.178	7.023	0.178	5	No
<i>Eupeodes latifasciatus</i>	Yes	VA	6.455	0.186	6.455	0.186	4	No
<i>Eupeodes volucris</i>	Yes	VA	6.795	0.175	6.795	0.175	5	No
<i>Helophilus fasciatus</i>	Yes	VA	6.477	0.232	6.477	0.232	3	No
<i>Lejops lunulatus</i>	Yes	VA	6.273	0.239	6.273	0.239	3	No
<i>Mallota bautias</i>	Yes	BI	5.568	0.238	3.045	0.247	1	No
<i>Mallota posticata</i>	Yes	BI	8.136	0.157	2.318	0.157	4	No
<i>Melangyna umbellatarum</i>	Yes	VA	7.000	0.248	7.000	0.248	2	No
<i>Melanostoma mellinum</i>	Yes	DM	4.523	0.251	4.523	0.251	4	No
<i>Parhelophilus laetus</i>	Yes	AM	6.795	0.180	5.795	0.193	6	No
<i>Pipiza femoralis</i>	Yes	DM	5.955	0.224	5.955	0.224	1	No
<i>Platycheirus confusus</i>	Yes	DM	5.864	0.240	5.864	0.240	1	No
<i>Platycheirus hyperboreus</i>	Yes	VA	3.727	0.231	3.727	0.231	1	No
<i>Platycheirus nearcticus</i>	Yes	VA	5.409	0.239	5.409	0.239	2	No

<i>Platycheirus obscurus</i>	Yes	VA	5.545	0.202	5.545	0.202	16	No
<i>Rhingia nasica</i>	Yes	AM	5.227	0.236	4.023	0.211	1	No
<i>Sericomyia chrysotoxoides</i>	Yes	VA	6.114	0.209	6.114	0.209	7	No
<i>Sericomyia lata</i>	Yes	VA	4.841	0.211	4.841	0.211	1	No
<i>Sericomyia militaris</i>	Yes	DM	5.568	0.249	5.568	0.249	2	No
<i>Sphaerophoria asymmetrica</i>	Yes	VA	5.205	0.225	5.205	0.225	1	No
<i>Sphaerophoria contigua</i>	Yes	VA	5.136	0.271	5.136	0.271	1	No
<i>Sphaerophoria novaeangliae</i>	Yes	VA	4.727	0.253	4.727	0.253	3	No
<i>Sphaerophoria philanthus</i>	Yes	VA	4.773	0.214	4.773	0.214	7	No
<i>Spilomyia fusca</i>	Yes	DM	6.273	0.255	6.273	0.255	2	Yes – LW, WW, MS
<i>Spilomyia longicornis</i>	Yes	VA	7.409	0.176	7.409	0.176	16	Yes – LW, WW, MS
<i>Spilomyia sayi</i>	Yes	DM	6.364	0.258	6.364	0.258	13	Yes – WW, MS
<i>Syrpita pipiens</i>	Yes	VA	4.591	0.200	4.591	0.200	16	No
<i>Syrphus knabi</i>	Yes	AM	6.455	0.232	6.205	0.214	1	No
<i>Syrphus rectus</i>	Yes	VA	6.500	0.240	6.500	0.240	4	No
<i>Syrphus ribesii</i>	Yes	VA	7.227	0.232	7.227	0.232	26	No
<i>Syrphus vitripennis</i>	Yes	VA	6.932	0.222	6.932	0.222	10	No
<i>Temnostoma alternans</i>	Yes	VA	7.295	0.142	7.295	0.142	7	Yes – LW, WW, MS
<i>Temnostoma barberi</i>	Yes	VA	5.295	0.177	5.295	0.177	4	Yes – LW, WW, MS
<i>Temnostoma obscurum</i>	No	DM	5.318	0.262	5.318	0.262	1	Yes – LW, WW, MS
<i>Toxomerus geminatus</i>	Yes	VA	5.636	0.221	5.636	0.221	22	No
<i>Toxomerus marginatus</i>	Yes	VA	5.727	0.211	5.727	0.211	9	No
<i>Tropidia quadrata</i>	Yes	AM	4.636	0.259	3.705	0.206	2	No
<i>Volucella bombylans</i>	No						6	No
<i>Xylota confusa</i>	Yes	DM	6.682	0.225	6.682	0.225	2	No

Appendix 4. Intra-class correlation coefficients for ratings of the similarity of 77 hover fly mimics to 5 Hymenoptera models by 44 human raters, showing the consistency (relative rating of mimetic similarity irrespective of absolute judgements) and agreement (the absolute ratings) between observers. All coefficients are significant at $p < 0.001$.

Model	Consistency	Agreement
<i>Apis mellifera</i>	0.409	0.361
<i>Vespula alascensis</i>	0.454	0.411
<i>Bombus terrestris</i>	0.424	0.342
<i>Dolichovespula maculata</i>	0.316	0.251
<i>Bombus impatiens</i>	0.504	0.416

Appendix 5. Box and whisker plots showing similarity distribution of species to their overall closest ranked model (*Bombus terrestris* was never the closest ranked model). Median and interquartile ranges are shown, along with means (squares), the maxima and minima (whiskers) and outliers (stars).

