



Liu, Ying and Dong, Haibo and Lohse, Niels and Petrovic, Sanja and Gindy, Nabil (2014) An investigation into minimising total energy consumption and total weighted tardiness in job shops. *Journal of Cleaner Production*, 65 . pp. 87-96. ISSN 0959-6526

**Access from the University of Nottingham repository:**

[http://eprints.nottingham.ac.uk/3064/1/Lohse\\_An\\_investigation\\_into\\_minimising\\_total\\_energy\\_consumption.pdf](http://eprints.nottingham.ac.uk/3064/1/Lohse_An_investigation_into_minimising_total_energy_consumption.pdf)

**Copyright and reuse:**

The Nottingham ePrints service makes this work by researchers of the University of Nottingham available open access under the following conditions.

- Copyright and all moral rights to the version of the paper presented here belong to the individual author(s) and/or other copyright owners.
- To the extent reasonable and practicable the material made available in Nottingham ePrints has been checked for eligibility before being made available.
- Copies of full items can be used for personal research or study, educational, or not-for-profit purposes without prior permission or charge provided that the authors, title and full bibliographic details are credited, a hyperlink and/or URL is given for the original metadata page and the content is not changed in any way.
- Quotations or similar reproductions must be sufficiently acknowledged.

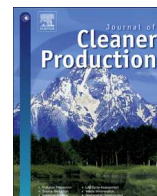
Please see our full end user licence at:

[http://eprints.nottingham.ac.uk/end\\_user\\_agreement.pdf](http://eprints.nottingham.ac.uk/end_user_agreement.pdf)

**A note on versions:**

The version presented here may differ from the published version or from the version of record. If you wish to cite this item you are advised to consult the publisher's version. Please see the repository url above for details on accessing the published version and note that access may require a subscription.

For more information, please contact [eprints@nottingham.ac.uk](mailto:eprints@nottingham.ac.uk)



# An investigation into minimising total energy consumption and total weighted tardiness in job shops<sup>☆</sup>



Ying Liu<sup>a,\*</sup>, Haibo Dong<sup>c</sup>, Niels Lohse<sup>a</sup>, Sanja Petrovic<sup>b</sup>, Nabil Gindy<sup>c</sup>

<sup>a</sup> Department of Mechanical, Material and Manufacturing Engineering, University of Nottingham, Nottingham NG7 2RD, United Kingdom

<sup>b</sup> Business School, University of Nottingham, Nottingham NG8 1BB, United Kingdom

<sup>c</sup> Division of Engineering, University of Nottingham Ningbo China, Ningbo 315100, China

## ARTICLE INFO

### Article history:

Received 6 March 2013

Received in revised form

23 July 2013

Accepted 26 July 2013

Available online 17 August 2013

### Keywords:

Energy efficient production planning

Sustainable manufacturing

Job shop scheduling

## ABSTRACT

Manufacturing enterprises nowadays face the challenge of increasing energy prices and requirements to reduce their emissions. Most reported work on reducing manufacturing energy consumption today focuses on the need to improve the efficiency of resources (machines) largely ignoring the potential for energy reducing on the system-level where the operational method can be employed as the energy saving approach. The advantage is clearly that the scheduling and planning approach can also be applied across existing legacy systems and does not require large investment. Therefore, a multi-objective scheduling method is developed in this paper with reducing energy consumption as one of the objectives. This research focuses on classical job shop environment which is widely used in the manufacturing industry. A model for the bi-objectives problem that minimises total electricity consumption and total weighted tardiness is developed and the Non-dominant Sorting Genetic Algorithm is employed as the solution to obtain the Pareto front. A case study based on a modified  $10 \times 10$  job shop is presented to show the effectiveness of the algorithm and to prove the feasibility of the model.

© 2013 The Authors. Published by Elsevier Ltd. All rights reserved.

## 1. Introduction

Energy is one of the most vital resources for manufacturing. In the last 50 years the consumption of energy by the industrial sector has more than double and industry currently consumes about half of the world's energy (Mouzon et al., 2007). Energy consumption is a very important cost element for manufacturing enterprises. The price of energy is growing higher as a result of the increasing crude oil prices (Kilian, 2008). For example, in 2006, energy costs for U.S. manufacturers were \$100 billion annually, which today is even higher (Mouzon et al., 2007). Additionally, energy consumption is one of the most significant factors that lead manufacturing enterprises to become environmental unfriendly. In the U.S., the manufacturing sector consumes about one-third of the energy used and contributes to about 28% of greenhouse gas emissions (Mouzon, 2008). One of the most important forms of energy for manufacturing is electricity which is highly polluting during its

production processes. Every year in China, manufacturing consumes around 50% of the entire electricity produced (Tang et al., 2006), and generates at least 26% of the total carbon dioxide emission. Thus, the increasing price of energy and the current trend of sustainability have exerted new pressure on manufacturing enterprises. They therefore have to reduce energy consumption both to save cost and to become more environmentally friendly.

Most existing research on reducing manufacturing energy consumption has focused so far on developing more energy (particularly electrical energy) efficient machines or machining processes (Duflou et al., 2012; Fang et al., 2011). However, compared to the background energy consumed by the manufacturing equipment operations, the energy requirements for the active removal of material can be quite small (Dahmus and Gutowski, 2004), especially in the mass production environment, it takes no more than 15% of the total energy usage. The majority of energy is consumed by functions that are not directly related to the production of components (Gutowski et al., 2005). This implies that efficiency improving efforts focussing solely on the machines or processes may miss a significant energy saving opportunity. In fact, there is a larger energy reducing margin on the system-level where the operational method can be employed as the energy saving approach. Additionally, compared to machine or process redesign, implementation of optimised shop floor scheduling and plant

<sup>☆</sup> This is an open-access article distributed under the terms of the Creative Commons Attribution License, which permits unrestricted use, distribution, and reproduction in any medium, provided the original author and source are credited.

\* Corresponding author. Tel.: +44 (0)7400028806 (mobile).

E-mail addresses: [epxy19@nottingham.ac.uk](mailto:epxy19@nottingham.ac.uk), [liuying.zju@gmail.com](mailto:liuying.zju@gmail.com) (Y. Liu).

operation strategies only require a modest capital investment and can easily be applied to existing systems (Fang et al., 2011).

As a result, employing operational methods can be a feasible and effective approach for manufacturing enterprises to reduce the energy consumption (Mouzon and Yildirim, 2008). The job shop type of manufacturing system is selected as the research object for the following reasons: from the academic perspective, it fills the research gaps that the multi-objective scheduling approaches for a typical job shop type of manufacturing system have not been well investigated from the perspective of energy consumption reduction. Most of the current energy-conscious scheduling researches are single machine and flow shop oriented. On the other hand, from the practical perspective, large majority of companies operate job shop model, especially for the small and medium enterprises (SMEs). For instance, the original equipment manufacturers (OEMs) in the aerospace industry usually employ the job shop manufacturing system for their capability to satisfy the increasingly diversified customer demands (Harrison et al., 2004). A general model of the job shop scheduling problem that considers minimising total weighted tardiness (TWT) and total energy consumption is proposed in this paper. Based on the review developed by Marler and Arora (2004) for the engineering multi-objective optimisation techniques, the evolutionary scheduling approaches (Dahal et al., 2007) and the proof of the effectiveness of Genetic Algorithm in improving the energy efficiency of production plans (Quilligan and Upton, 2012), the Non-dominant Sorting Genetic Algorithm (NSGA-II) (Deb et al., 2002) has been adopted for achieving the bi-objective optimisation. The optimisation framework proposed in this paper can be applied to discrete event machining production system and may save significant amounts of energy and reduce the cost as well as keep a good performance of classical scheduling objectives. The term “machining” in this paper will refer to processes such as milling, turning, drilling, and sawing (Dahmus and Gutowski, 2004).

In the remaining of the paper, the research problem will be more formally defined after the background research and research motivation; then the model will be presented, followed by an introduction to the NSGA-II and how it has been applied to optimised the bi-objective scheduling problem; finally, a case study is presented to demonstrate the effectiveness of the feasibility of the model and the effectiveness of the algorithm for the research problem.

## 2. Background and motivation

A considerable amount of research has been conducted in the area of sustainable machining. Duflo et al. (2012) and Fysikopoulos et al. (2013) provide the state-of-the-art reviews in energy and resource efficiency increasing methods and techniques in the area of discrete part manufacturing. A detailed process model that can be used to determine the environmental impacts resulting from the machining of a particular part have been presented by Munoz and Sheng (1995). Based on experiments on an automated milling machine, Diaz et al. (2009) conclude that high-speed cutting would reduce the energy consumption per volume of material processed for machine tools which demands high constant power. Method of estimating machining energy consumption according to numerical control (NC) code has been proposed by He et al. (2012b). This kind of method provides a potential faster way to estimate energy consumption of machining processes. Avram and Xirouchakis (2011) have developed a methodology to estimate the energy requirements during use phase of spindle and feed axis according to automatic programming tool (ATP) file. This method considers the entire machine tool system by taking into account steady-state and transient regimes. Dahmus and Gutowski (2004) and Kordonowy (2003) developed a system level research which not only includes energy requirement for material removal process itself, but also associated processes such as axis feed.

The approach which breaks the total energy use of machining processes has been employed as the bases for modelling power input of machine tools on the workshop level. According to this approach, the electricity consumption for a machine tool in a feasible schedule can be divided to two types: the non-processing electricity consumption (NPE) and processing electricity consumption (PE). NPE is associated with machine start-up, shut-down and idling. The electricity consumed when a job is processed on a specific machine can be defined as job related processing electricity consumption (JPE), including the basic power consumption of machine tools, i.e. idle power, the runtime operations and the actual cutting consumption. Thus, PE is the sum of all the JPE on a specific machine. Each JPE has been defined as a constant value by both Mouzon (2008) and He et al. (2012a) in their models, since on the workshop level, what we mainly concern about is how scheduling plans affect the total electricity consumption of the manufacturing system. Therefore, the JPE can be seen as a black box for scheduling problems. This modelling approach will be adopted for this research.

The typical electricity saving method (ESMs) on the system level include: Sequencing, Turn Off/Turn On and Process Route Selection (PRS). The sequencing method has been adopted by Mouzon (2008) to reduce the total NPE in single machine environment and parallel machine environment. Since the order of jobs which are processed on the same machine will affect the total amount of the idle time and the length of each idle period of that machine. Drake et al. (2006) realised that in manufacturing environment, large quantities of energy are consumed by non-bottleneck machines as they lie idle, and that whenever a machine or is turn on or turn off, there are significant amounts of start-up or shut-down energy consumption. Based on this fact, Mouzon (2008) proposed a Turn Off/Turn On method, which means a machine tool could be turned off when it becomes idle for electricity saving purpose. In some factories, it is not feasible to switch machines off when they become idle. Thus, Aughney and O'Donnell (2012) define a “powersave” mode for machines where one can save energy without turning the machine off. According to above, both of the Sequencing and Turn Off/Turn On methods can be applied to any type of manufacturing system for the electricity saving purpose by reducing the NPE of the machines.

Mouzon (2008) employed the PRS to reduce both total PE and total NPE for parallel machine environment. He et al. (2012a) used the same method to decrease both total PE and total NPE for a flexible job shop environment. The limitation for PRS is that it is only effective in systems which have alternative routes with different energy characteristics for the same job, i.e. PRS is not applicable to workshops without alternative routes, or having identical alternative routes for jobs, for instance, the job shop environment.

Optimisation techniques are required to be developed to enable the above ESMs to be optimally applied to the manufacturing systems, thereby, reducing the energy consumption. Methods including dispatching rules, a genetic algorithm and a greedy randomised adaptive search procedure have been proposed by Mouzon et al. (2007) and Mouzon (2008) to achieve this aim. However, according to the classification method for manufacturing models by Pinedo (2012), the above research works focus on the single machine environment and the parallel machine environment limits the applicability of their methods for wider range of production systems. The amount of research on scheduling with environmentally-oriented objectives is currently small but increasing. For example, Fang et al. (2011) considered reducing peak power load in a flow shop. Bruzzonea et al. (2012) developed a method to modify the schedule of the jobs in flexible flow shops in order to adjust to the maximum peak power constraint. Subai et al. (2006) considered energy and waste reduction in hoist scheduling problem of the surface treatment processes without changing the original productivity. Wang et al. (2011) proposed an optimal scheduling procedure to select appropriate batch

and sequence policies to improve the paint quality and decrease repaints, thereby reducing energy and material consumption in an automotive paint shop.

Based the discussion above, the motivation for this research from an academic aspect is employing operational methods to reduce the total energy consumption in a typical job shop environment without machines in parallel still has not been explored very well. The objective of reducing the total energy consumption can be converted to the reduction of the total NPE since there is no alternative route in the system and hence the total PE remains constant. The lack of a more fundamental energy saving oriented job-shop model and its related scheduling techniques are significant gaps in the current research which needs to be addressed. Based on the fundamental model and scheduling method, more complex models, for instance, the flexible job shop with recirculation and more sophisticated optimisation techniques can be developed.

For this research, the NPE only includes the idle power consumption of machine tools. Adopting the TWT as the performance indicator, the underlying objective for this paper is defined as: Multi-objective Total NPE and TWT Job Shop Scheduling (Electricity Consumption and Tardiness-ECT). The modelling method for this problem will be presented below.

### 3. Problem definition and notations

Job shops are prevalent in industry. Normally, there are several jobs and each job visit a number of machines following a pre-determined route. As shown in Fig. 1, component A and B are processed in a job shop with four machines, the processing routine for them are Machine 1–3–2–4 and Machine 3–1–4–2 respectively. The job shop model used in this research is the deterministic (static) one which means the number of jobs is a fixed value and all of them are ready to be processed at time 0. The recirculation circumstance is not considered in this model which means a job only visit any given machine at most once. The aim of this research is to reduce both TWT and NPE in an aforementioned static job shop. The formal mathematical definition of the problem will be described in detail in the following sections.

#### 3.1. Notations

The notations used in the problem statement and throughout the paper are as follows:

- $C_{ik}^l$  completion time of  $O_{ik}^l$  on  $M_k$
- $C_i(s)$  completion time of  $J_i$  in schedule  $s$  (i.e. the completion time of the last operation of  $J_i$ ,  $O_i^{u_i}$ )
- $C_k^r$  completion time of  $m_k^r$  on  $M_k$
- $d_i$  due date of  $J_i$

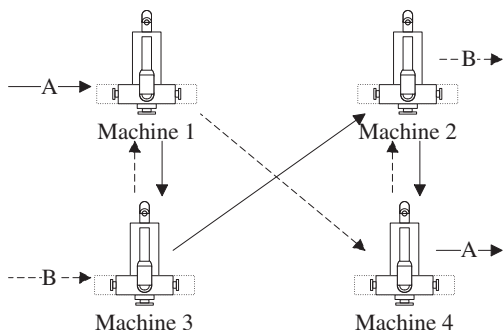


Fig. 1. A typical job shop.

- $E_{ik}^{lcutting}$  electricity consumption of  $M_k$  when it actually executes cutting for  $O_{ik}^l$
- $E_{ik}^{lruntime}$  electricity consumption of  $M_k$  when it executes the runtime operations for processing  $O_{ik}^l$
- $E_{ik}^{lbasic}$  electricity consumed by  $M_k$  with the idle power level during  $p_{ik}^l$
- $E_{ik}^l$  JPE of  $O_{ik}^l$  on  $M_k$
- $J$  a finite set of  $n$  jobs,  $J = \{J_i\}_{i=1}^n$
- $M$  a finite set of  $m$  machines,  $M = \{M_k\}_{k=1}^m$
- $M_k^r$  a finite set of operations processed on  $M_k$ ,  $M_k^r = \{m_k^r\}_{r=1}^{\sum_{i=1}^n \sum_{l=1}^{u_i} \gamma_{ik}^l}$
- $m_k^r$   $r$ -th operation processed on  $M_k$  within a feasible schedule  $s$
- $O_i$  a finite set of  $u_i$  ordered operations of  $J_i$ ,  $O_i = \{O_{ik}^l\}_{l=1}^{u_i}$
- $O_{ik}^l$   $l$ -th operation of  $J_i$  processed on  $M_k$
- $p_{ik}^l$  processing time of  $O_{ik}^l$
- $P_k$  input power of  $M_k$
- $p_k^{idle}$  idle power of  $M_k$
- $p_{ik}^{lruntime}$  power level of  $M_k$  when it executes the runtime operations for processing  $O_{ik}^l$
- $p_{ik}^{lcutting}$  power level of  $M_k$  when it actually executes cutting for  $O_{ik}^l$
- $r_i$  release time of  $J_i$  into the system
- $S_{ik}^l$  starting time of  $O_{ik}^l$  on  $M_k$
- $S_k^r$  starting time of  $m_k^r$  on  $M_k$
- $s$  a feasible schedule plan
- $S$  a finite set of all feasible schedule plans,  $s \in S$
- $T_i(s)$  tardiness of  $J_i$ , defined as  $T_i(s) = \max\{0, C_i(s) - d_i\}$
- $t_{ik}^{lcutting}$  cutting time
- $w_i$  weighted importance of  $J_i$
- $\gamma_{ik}^{ll}$   $\gamma_{ik}^{ll} = 1$  if  $O_{ik}^l$  precedes  $O_{ik}^l$  on  $M_k$ , 0 otherwise
- $\gamma_{ik}^l$   $\gamma_{ik}^l = 1$  if the  $l$ -th operation of  $J_i$  processed on  $M_k$ , 0 otherwise

#### 3.2. Job shop model

The job shop scheduling problem outlined above is formally defined following the work of Özgüven et al. (2010), Jain and Meeran (1998) and Vázquez-Rodríguez and Petrovic (2010). In a job shop, a finite set of  $n$  jobs  $J = \{J_i\}_{i=1}^n$  are to be processed on a finite set of  $m$  machines  $M = \{M_k\}_{k=1}^m$  following a predefined order. Each job is defined as a finite set of  $u_i$  ordered operations  $O_i = \{O_{ik}^l\}_{l=1}^{u_i}$  where  $O_{ik}^l$  is the  $l$ -th operation of job  $J_i$  processed on machine  $M_k$  and requiring a processing time denoted by  $p_{ik}^l$ . The start time  $S_{ik}^l$  when an operation  $O_{ik}^l$  begins to be processed on machine  $M_k$  will be determined based on the defined production

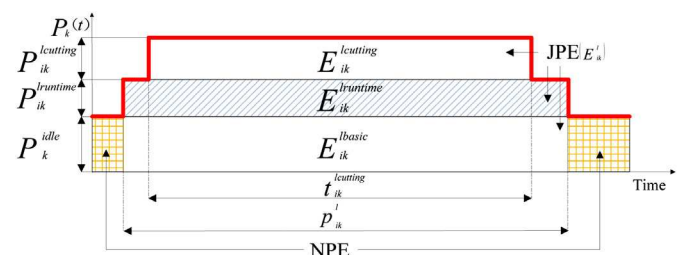


Fig. 2. The simplified power input of a machine tool when it is working on one operation.



schedule, while  $C_{ik}^l$  is the corresponding completion time of that operation. The order of any two operations on a machine  $M_k$  is expressed by a decision variable  $Y_{i'k}^{ll'}$  which is  $Y_{i'k}^{ll'} = 1$  if operation  $O_{i'k}^{l'}$  precedes  $O_{ik}^l$  and 0 otherwise. Each job  $J_i$  has a release time into the system  $r_i$  and a due date  $d_i$ . Different jobs can be prioritised using the weighted importance factor  $w_i$  for each job  $J_i$  as a number between 0 and 1.

The model is subject to the following constraints to ensure its integrity during the schedule optimisation:

$$S_{ik}^l \geq r_i, \quad \forall J_i \in J, \quad \forall O_{ik}^l \in O_i, \quad \forall M_k \in M \quad (1)$$

$$C_{ik}^{l+1} - C_{i'k}^l \geq p_{i'k}^{l+1}, \quad 1 \leq l < l+1 \leq u_i, \quad k \neq k', \quad (2)$$

$$\forall J_i \in J, \quad \forall O_{i'k}^{l+1}, \quad O_{i'k}^l \in O_i, \quad \forall M_k, \quad M_{k'} \in M$$

$$S_{ik}^{l+1} - C_{i'k}^l \geq 0, \quad 1 \leq l < l+1 \leq u_i, \quad k \neq k', \quad (3)$$

$$\forall J_i \in J, \quad \forall O_{i'k}^{l+1}, \quad O_{i'k}^l \in O_i, \quad \forall M_k, \quad M_{k'} \in M$$

$$C_{i'k}^l - C_{ik}^l \geq p_{i'k}^l, \quad Y_{i'k}^{ll'} = 1, \quad i \neq i', \quad (4)$$

$$\forall J_i, \quad J_{i'} \in J, \quad \forall O_{i'k}^l \in O_i, \quad \forall O_{i'k}^l \in O_{i'}, \quad \forall M_k \in M$$

where

$$Y_{i'k}^{ll'} \in \{0, 1\} \quad i \neq i', \quad \forall J_i, \quad J_{i'} \in J, \quad \forall O_{i'k}^l \in O_i, \quad \forall O_{i'k}^l \in O_{i'}, \quad \forall M_k \in M$$

$$S_{ik}^l \geq 0, \quad C_{ik}^l \geq 0 \quad \forall J_i \in J, \quad \forall O_{ik}^l \in O_i, \quad \forall M_k \in M$$

$$C_{ik}^l \geq 0 \quad \forall J_i \in J, \quad \forall O_{ik}^l \in O_i, \quad \forall M_k \in M$$

Constraint (1) ensures that the starting times  $S_{ik}^l$  for all operations  $O_{ik}^l$  must be greater or equal to the release times  $r_i$  of the job  $J_i$  they belong to. Constraint (2) and (3) ensures that the precedence relationships between the operations of a job are not violated. I.e. the operation  $O_{i'k}^{l+1}$  cannot start before the previous operation  $O_{i'k}^l$  has been completed and no job can be processed by more than one machine at a time. Constraint (4) takes care of the requirement that no machine can process more than one operation at a time.

A schedule  $s$  that complies with constraints (1)–(4) is said to be a feasible schedule.  $S$  is a finite set of all feasible schedules  $s$  such that  $s \in S$ . Furthermore, given a feasible schedule  $s$ , let  $C_i(s)$  indicate the completion time of job  $J_i$  in schedule  $s$ . The tardiness of job  $J_i$  can then be denoted as  $T_i(s) = \max\{0, C_i(s) - d_i\}$  and the first optimisation objective to minimise the total weighted tardiness of all jobs can be expressed as:

$$\text{minimise} \left( \sum_{i=1}^n w_i \times T_i(s) \right) \quad (5)$$

### 3.3. Electricity consumption model

The electricity consumption model is based on existing research work on environmental analysis of machining (Avram, 2010; Diaz et al., 2010; Dietmair and Verl, 2009; Kordonowy, 2003). A simplified power input model for each machine  $M_k$  when it is working on operation  $O_{ik}^l$  has been developed as shown in Fig. 2. The model assumes that each machine  $M_k$  has three constant levels of power consumption: during idle time, when switched into runtime mode and when carrying out the actual operation; here presented as cutting operation.

The input power  $P_k(t)$  a machine  $M_k$  requires over time is defined as a stepped function represented by the red line in Fig. 2. The idle power level of a machine  $M_k$  is defined by  $P_k^{\text{idle}}$ , the increase in power during runtime is defined by  $P_k^{\text{runtime}}$ , and the further additional power requirement for cutting is given by  $P_k^{\text{cutting}}$ . The overall processing time  $p_{ik}^l$  is defined as the time interval between coolant switching on and off. The cutting time  $t_{ik}^{\text{cutting}}$  for an operation  $O_{ik}^l$  is often a slightly shorter time interval during which the highest power level is required;  $p_k^{\text{max}} = P_k^{\text{idle}} + P_k^{\text{runtime}} + P_k^{\text{cutting}}$ .

Assuming that the power levels remain constant during an operation, the basic energy consumption of a machine  $M_k$  during the runtime for operation  $O_{ik}^l$  can be defined as  $E_{ik}^{\text{basic}} = P_k^{\text{idle}} \times p_{ik}^l$  and the additional energy required to put the machine into runtime mode is  $E_{ik}^{\text{runtime}} = P_k^{\text{runtime}} \times p_{ik}^l$ . The extra energy required for the cutting process during operation  $O_{ik}^l$  can be defined as  $E_{ik}^{\text{cutting}} = P_k^{\text{cutting}} \times t_{ik}^{\text{cutting}}$ . Hence, the job related processing electricity consumption (JPE) required to carry out operation  $O_{ik}^l$  on machine  $M_k$  is  $E_{ik}^l = E_{ik}^{\text{idle}} + E_{ik}^{\text{runtime}} + E_{ik}^{\text{cutting}}$ .

According to the above definitions,  $E_{ik}^l$  can be treated as a constant for each operation  $O_{ik}^l$ , since both the power level and the process duration for each operation are fixed values. Therefore, it is easy to conclude that the processing electricity consumption (PE) required for all operations processed on a machine  $M_k$  expressed as  $\sum E_{ik}^l$  is also a constant which will not be affected by different scheduling plans. Thus, the objective to reduce the total electricity consumption of a job shop can be converted to reduce the total non-processing energy (NPE). Hence, the objective function can be set as the sum of all the NPE consumed by all the machines in a job shop to carry out a given job schedule:

$$\text{minimise} \left( \sum_{k=1}^m \text{TEM}_k^{\text{np}}(s) \right) \quad (6)$$

where  $\text{TEM}_k^{\text{np}}(s)$  is the NPE of machine  $M_k$  for schedule  $s$ . Unlike the PE, the NPE is a function of the scheduling plan. Hence,  $\text{TEM}_k^{\text{np}}(s)$  needs to be expressed based on the specific order the different operations  $O_{ik}^l$  have been scheduled to run on a machine  $M_k$ .  $M_k^r = \{m_{ik}^r\}_{i=1}^n \sum_{i=1}^{u_i} \gamma_{ik}^l$  is the finite set of operations processed on  $M_k$ .  $\gamma_{ik}^l$  is a decision variable that  $\gamma_{ik}^l = 1$  if the  $l$ -th operation of job  $J_i$  processed on  $M_k$ , 0 otherwise. With  $S_k^r$  and  $C_k^r$  respectively indicate the start and completion time of operation  $m_{ik}^r$  on  $M_k$  for a schedule  $s$ , this schedule can be graphically expressed as a Gantt chart as shown in Fig. 3. Consequently, the calculation of the NPE of machine  $M_k$  can be expressed based on start and completion times defined for a schedule  $s$ :

$$\text{TEM}_k^{\text{np}}(s) = P_k^{\text{idle}} \times \left[ \max(C_k^r) - \min(S_k^r) - \sum_r (C_k^r - S_k^r) \right] \quad (7)$$

Fig. 3 is an example for the calculation of the NPE of  $M_k$ .  $O_{i_1k}^1$ ,  $O_{i_2k}^2$ ,  $O_{i_3k}^3$ , and  $O_{i_4k}^4$  are processed by  $M_k$ . Based on Equation (7), to get the value of NPE which is represented by the blue grid area, firstly the total idle time of machine  $M_k$  in above schedule needs to be calculated, which is  $(C_k^4 - S_k^1) - \sum_{r=1}^4 (C_k^r - S_k^r)$ . Then, the aforementioned value is multiplied by the idle power level of machine  $M_k$  to obtain the NPE for a schedule.

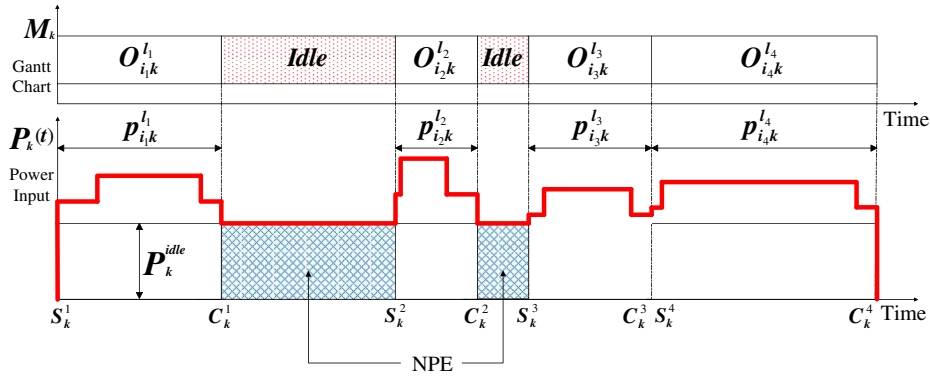


Fig. 3. Gantt chart of  $M_k$  and its corresponding power profile.

In summary, the two objective function for the optimisation of both TWT and NPE can be expressed based on (Vázquez-Rodríguez and Petrovic, 2010) using Equations (5) and (6) as:

$$\text{minimise } F(s) = (f_1(s), f_2(s)) \quad s \in S \quad (8)$$

$$f_1(s) = \sum_{i=1}^n w_i \times T_i(s); \quad f_2(s) = \sum_{k=1}^m TEM_k^{np}(s) \quad (9)$$

#### 4. NSGA-II and its related operators

The NSGA-II has two main operators: the non-dominated sorting procedure and crowding distance sorting procedure. Non-dominated sorting procedure ranks the solutions in different Pareto fronts. The crowded distance sorting procedure calculates dispersion of solutions in each front and preserves the diversification of the algorithm. In each generation of this algorithm, these two functions form the Pareto fronts (Rabiee et al., 2012). Vilcot and Billaut (2008) provides a summary for the working procedure of NSGA-II, as in following. For more information refer to Deb et al. (2002).

##### 4.1. Non-dominant sorting procedure

All the solutions of a certain population (denoted by  $P_t$ ) are evaluated according to the non-dominated sorting method as shown in Fig. 4. Level 1 contains all the dominant individuals within the population. If individuals in the first level are not considered, the second set of dominant individuals constitutes level 2. The process iterates until each individual is classified to one

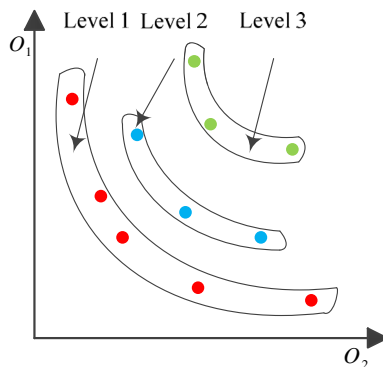


Fig. 4. Non-dominated levels (Deb et al., 2002).

of the levels. The level (rank) where an individual locates is the most important factor of its fitness that the individual with lower rank is preferable.

##### 4.2. Crowding distance sorting procedure

The crowding distance of a solution is defined by Deb et al. (2002) as: “an estimate of the perimeter of the cuboid formed by using the nearest neighbours as the vertices”. The diversity of the population is guaranteed by using the crowding distance sorting procedure. For an individual, the crowding distance is the sum of the normalised distance between the right and left neighbours for each objective function. The extreme solutions have a crowding distance equal to infinity (see Fig. 5).

##### 4.3. NSGA-II algorithm

In the beginning of the algorithm, an initial population  $P_0$  with the size of  $N$  is randomly generated. All the individuals of  $P_0$  are sorted using the above two procedures. Then, the algorithm employs selection, crossover and mutation operators to create the first offspring set  $Q_0$  ( $|Q_0| = N$ ). The selection operator is a binary tournament: between two individuals, the selected individual is the one with the lower rank. If two individuals are on the same level, the winner is the one with the larger value in the crowding distance. At a given generation  $t$ ,  $R_t$  is defined as the union of the parents  $P_t$  and their offspring  $Q_t$ . Thus,  $|R_t| = 2N$ . Individuals of  $R_t$  are sorted following the aforementioned two procedures. Frontier  $F_f$  is defined as the set of non-dominated solutions of level  $f$ . The individuals in  $P_{t+1}$  are the solutions of frontiers  $F_1$  to  $F_\lambda$  with  $\lambda$  such that  $\sum_{i=1}^\lambda |F_i| \leq N$  and  $\sum_{i=1}^{\lambda+1} |F_i| > N$  plus the  $N - \sum_{i=1}^\lambda |F_i|$  first solutions of  $F_{\lambda+1}$  according to their descending value in crowding

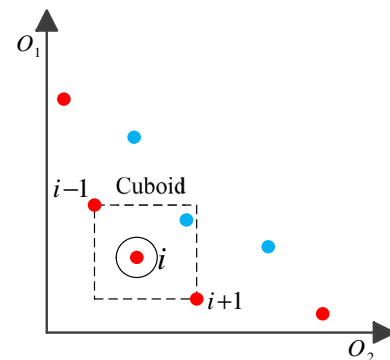


Fig. 5. Computation of the crowding distance (Deb et al., 2002).

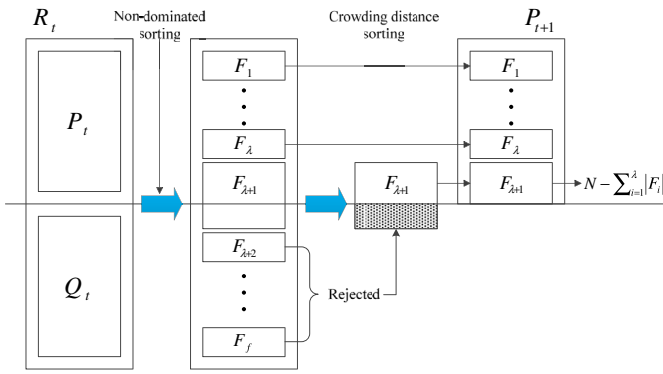


Fig. 6. Construction of population  $P_{t+1}$ .

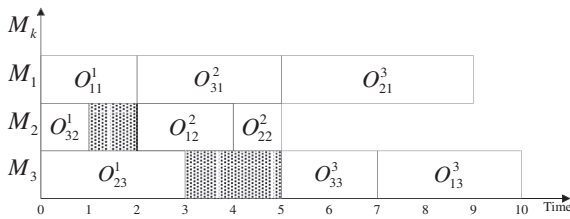


Fig. 7. Gantt chart of chromosome [321123321], transformed by the active schedule builder (Liu and Wu, 2008).

distance. The remaining solutions are rejected. Solutions from  $P_{t+1}$  are used to make the new offspring population  $Q_{t+1}$ . Fig. 6 illustrates the generation of population  $P_{t+1}$

4.4. Encoding schema and schedule builder

The operation-based encoding schema (OBES) is adopted for this research which is mathematically known as “permutation with repetition” (Dahal et al., 2007), where each job’s index number is repeated  $u_i$  times ( $u_i$  is the number of operations of  $J_i$ ). By scanning the permutation from left to right, the  $l$ -th occurrence of a job’s index number refers to the  $l$ -th operation in the technological sequence of this job. According to an example provided by Liu and Wu (2008), [321123321] is a feasible chromosome for a  $3 \times 3$  job shop, 3 on the first gene position stands for  $O_{32}^1$ ; 3 on the sixth gene position stands for  $O_{31}^2$ ; 3 on the seventh gene position stands for  $O_{33}^3$ . Thus, the chromosome can be translated to a list of ordered operations as  $[O_{32}^1, O_{23}^1, O_{11}^1, O_{12}^2, O_{22}^2, O_{31}^2, O_{33}^3, O_{21}^3, O_{13}^3]$ . Decoded by the active schedule builder, the chromosome can be transformed into a feasible schedule as depicted in Fig. 7. For more information about

the decoding procedure of the active schedule builder refer to Dahal et al. (2007), The advantage of such a scheme is that all the generated schedules are legal and active (Dahal et al., 2007; Wang et al., 2009).

4.5. Crossover and mutation operators

Referring to Liu and Wu (2008), Cheng et al. (1999) and Ono et al. (1996), the crossover and mutation operators in this research are defined as below:

4.5.1. Crossover operator

The operation-based order crossover (OOX) which is developed based on the job-based order crossover (JOX) is adopted as the crossover operator. The advantage of OOX is that it can avoid producing illegal chromosome in offspring. Given parent 1- $A_1$  and parent 2- $A_2$ , OOX generates child 1- $A'_1$  and child 2- $A'_2$  by the following procedure:

1. Randomly, choose the same operations from both of the parents  $A_1$  and  $A_2$ . The loci of the selected operations are preserved.
2. Copy the operations chosen at step 1 from  $A_1$  to  $A'_1$ ,  $A_2$  to  $A'_2$ , the loci of them are preserved in the offspring  $A'_1$  and  $A'_2$ .
3. Copy the operations, which are not copied at step 2, from  $A_2$  to  $A'_1$ ,  $A_1$  to  $A'_2$ , the order of them are preserved in the offspring.

For example, in a  $3 \times 3$  job shop, [321123321] and [222333111] are feasible parent chromosomes. The loci of operations, which are  $O_{32}^1$ ,  $O_{22}^2$  and  $O_{13}^3$  in the boxes are preserved.

$$A_1 = [\boxed{3}211\boxed{2}332\boxed{1}]$$

$$A_2 = [2\boxed{2}2\boxed{3}3311\boxed{1}]$$

$A'_1$  and  $A'_2$  are feasible child chromosomes as shown below:

$$A'_1 = [\boxed{3}223\boxed{2}311\boxed{1}]$$

$$A'_2 = [2\boxed{2}1\boxed{3}1332\boxed{1}]$$

4.5.2. Mutation operator

The swap mutation operator is employed in this research which means two difference arbitrary genes of the parent chromosome are chosen and swap the values. Following the above example,  $A'_1$  is the final child chromosome of  $A_1$  after applying mutation on  $A'_1$ .

Table 1  
The parameters of the  $10 \times 10$  job shop.

$M_k (P_{ik}^l)$	$O_{ik}^1$	$O_{ik}^2$	$O_{ik}^3$	$O_{ik}^4$	$O_{ik}^5$	$O_{ik}^6$	$O_{ik}^7$	$O_{ik}^8$	$O_{ik}^9$	$O_{ik}^{10}$	$r_i$	$d_i$	$w_i$
$J_1$	$M_1$ (29)	$M_2$ (78)	$M_3$ (9)	$M_4$ (36)	$M_5$ (49)	$M_6$ (11)	$M_7$ (62)	$M_8$ (56)	$M_9$ (44)	$M_{10}$ (21)	0	592	1
$J_2$	$M_1$ (43)	$M_3$ (90)	$M_5$ (75)	$M_{10}$ (11)	$M_4$ (69)	$M_2$ (28)	$M_7$ (46)	$M_6$ (46)	$M_8$ (72)	$M_9$ (30)	0	769	2
$J_3$	$M_2$ (91)	$M_1$ (85)	$M_4$ (39)	$M_3$ (74)	$M_9$ (90)	$M_6$ (10)	$M_8$ (12)	$M_7$ (89)	$M_{10}$ (45)	$M_5$ (33)	0	852	3
$J_4$	$M_2$ (81)	$M_3$ (95)	$M_1$ (71)	$M_5$ (99)	$M_7$ (9)	$M_9$ (52)	$M_8$ (85)	$M_4$ (98)	$M_{10}$ (22)	$M_6$ (43)	0	982	1
$J_5$	$M_3$ (14)	$M_1$ (6)	$M_2$ (22)	$M_6$ (61)	$M_4$ (26)	$M_5$ (69)	$M_9$ (21)	$M_8$ (49)	$M_{10}$ (72)	$M_7$ (53)	0	589	3
$J_6$	$M_3$ (84)	$M_2$ (2)	$M_6$ (52)	$M_4$ (95)	$M_9$ (48)	$M_{10}$ (72)	$M_1$ (47)	$M_7$ (65)	$M_5$ (6)	$M_8$ (25)	0	744	2
$J_7$	$M_2$ (46)	$M_1$ (37)	$M_4$ (61)	$M_3$ (13)	$M_7$ (32)	$M_6$ (21)	$M_{10}$ (32)	$M_9$ (89)	$M_5$ (55)	$M_8$ (30)	0	624	3
$J_8$	$M_3$ (31)	$M_1$ (86)	$M_2$ (46)	$M_6$ (74)	$M_5$ (32)	$M_7$ (88)	$M_9$ (19)	$M_{10}$ (48)	$M_8$ (36)	$M_4$ (79)	0	808	2
$J_9$	$M_1$ (76)	$M_2$ (69)	$M_4$ (76)	$M_6$ (51)	$M_3$ (85)	$M_{10}$ (11)	$M_7$ (40)	$M_8$ (89)	$M_5$ (26)	$M_9$ (74)	0	895	1
$J_{10}$	$M_2$ (85)	$M_1$ (13)	$M_3$ (61)	$M_7$ (7)	$M_9$ (64)				$M_5$ (90)	$M_8$ (45)	0	810	1

**Table 2**  
The idle power ( $P_k^{idle}$ ) of  $M_k$ .

	$M_1$	$M_2$	$M_3$	$M_4$	$M_5$	$M_6$	$M_7$	$M_8$	$M_9$	$M_{10}$
$P_k^{idle}$	2400 W	3360 W	2000 W	1770 W	2200 W	7500 W	2000 W	1770 W	2200 W	7500 W

**Table 3**  
The optimisation result of SBH and LSH of the  $10 \times 10$  job shop by LEKIN.

Tardiness factor ( $k$ )	TWT ( $tw_{s1}^k$ ) in weighted min	Total NPE ( $npe_{s1}^k$ ) in kWh	Heuristic
1.5	309	181	SBH
1.6	127	181	SBH
1.7	25	169.7	LSH
1.8	0	169.7	LSH

**Table 4**  
The parameters settings for the NSGA-II.

Tardiness factor $k$	Population size $N$	Crossover probability $p_c$	Mutation probability $p_m$	Generation $t$	Pareto front $P_k$
1.5	1000	1.0	0.6	40,000	$P_{1.5}$
1.6	1000	1.0	0.6	40,000	$P_{1.6}$
1.7	800	1.0	0.6	30,000	$P_{1.7}$
1.8	800	1.0	0.6	25,000	$P_{1.8}$

$$A'_1 = [32 \boxed{2} 3231 \boxed{1} 1]$$

$$A''_1 = [32 \boxed{1} 3231 \boxed{2} 1]$$

**5. Case study**

A modified job shop instance incorporates electrical consumption profiles for the machine tools: E-F&T  $10 \times 10$  is developed based on the Fisher and Thompson  $10 \times 10$  instance (F&T  $10 \times 10$ ) (Fisher and Thompson, 1963) as the case study. To satisfy the requirements of this research, the due date and weight for each job and the processing time units of the jobs time need to be defined. According to the TWK due date assignment method (Sabuncuoglu and Bayiz, 1999; Shi et al., 2007),  $d_i = k \times \sum_{i=1}^m p_{ik}^l$ ,  $i = 1, 2, \dots, n$  where  $k$  is the tardiness factor. The value of  $k$  will be set as 1.5, 1.6, 1.7, 1.8 which corresponds to the trend of less tight due dates in this research. The weight of each  $J_i$  is randomly allocated. The time unit

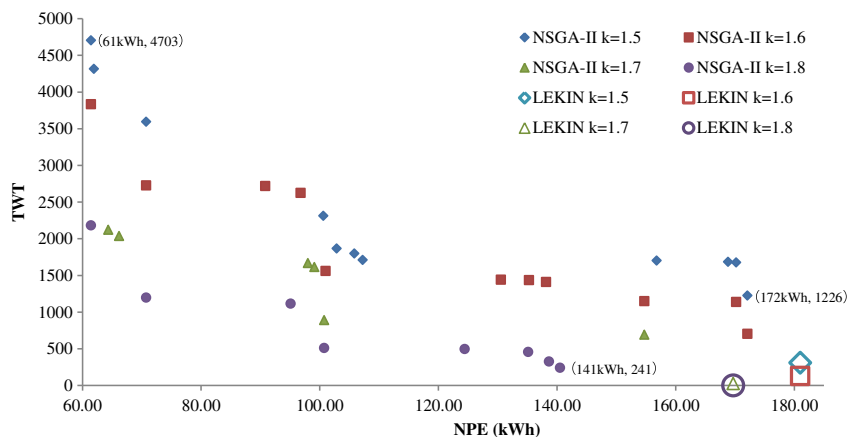
is defined as minute. The parameters of the  $10 \times 10$  job shop are given in Table 1, where, for instance,  $k = 1.5$ , this value of  $k$  represents a tight due date case (corresponds to 50% tardy jobs).

According to the objective of minimising the total NPE, the idle power level of each machine needs to be defined. Suppose that all the machine tools in this research are automated ones, the individual value of the idle power level of each machine in the  $10 \times 10$  job shop can be abstracted from research works developed by Avram and Xirouchakis (2011), Baniszewski (2005), Dahmus (2007), Diaz et al. (2010), Drake et al. (2006), Kalla et al. (2009), Li et al. (2011) and Rajemi (2010), are shown in Table 2.

**5.1. Comparison experiment**

To demonstrate the effectiveness of NSGA-II in solving the ECT problem, the following comparison experiment has been carried out. Scenario 1 (S1) represents a scheduling plan created following a well-established traditional scheduling approach of a manufacturing company without considering reducing total NPE as an objective. Being set as the control group and baseline, S1 corresponds to the job shop scheduling problem with the single objective to minimise the TWT. The Shifting Bottleneck Heuristic (SBH) and Local Search Heuristic (LSH) approaches provided by the software LEKIN (Pinedo, 2009) have been used as the optimisation techniques in this scenario. For the E-F&T  $10 \times 10$  job shop, the TWT value has been given after each run of the optimisation technique. The total NPE value has been calculated based on each optimised scheduling plan under different due date conditions, as shown in Table 3. The parameters settings of the NSGA-II were obtained after the initial tuning process, as shown in Table 4.

For the NSGA-II, the values of the two objective functions under different due date conditions can be denoted as two sets:  $tw_{GA}^k = \{tw_{GA}^{kq} \}_{q=1}^p$  and  $npe_{GA}^k = \{npe_{GA}^{kq} \}_{q=1}^p$ , where  $k$  is the tardiness factor and  $p$  is the total number of solutions in  $P_k$ . The algorithm had been developed based on the Jmetal framework (Nebro and Durillo, 2011). The comparison between the solutions in S1 (a single objective job shop scheduling problem) and the solutions in  $P_k$  is shown in Fig. 8.



**Fig. 8.** The solution comparison between NSGA-II and the baseline scenario.





Fig. 9. Gantt chart of optimised schedule of SBH produced by LEKIN (A) and Gantt chart of optimised schedule of NSGA-II (B) while  $k = 1.5$ .

When  $k = 1.5$ , a considerable total NPE reduction can be observed when employing NSGA-II as the bi-objective optimisation approach, compared to the single objective optimisation result of SBH. The minimum and maximum value in  $npe_{GA}^{1.5}$  are 61 kWh and 172 kWh respectively, which means a 4.9–66.1% improvement in the total NPE consumption compare to the values in LEKIN, i.e. 0.9 kWh/Job to 12 kWh/Job reduction in electricity consumption per job can be achieved. There is an increase in TWT, the minimum value in  $tw_{GA}^{1.5}$  is 1226 weighted min, while  $tw_{s1}^{1.5} = 309$  weighted min (the blue hollow point). However, when the due date become less tight, the difference between  $tw_{GA}^k$  and  $tw_{s1}^k$  is much smaller.

For instance, when  $k = 1.8$ ,  $\min\{tw_{GA}^{1.8}\} - tw_{s1}^{1.8} = 241$  weighted min, at the same time, the total NPE reduction is 16.9% compared to the value in LEKIN.

### 5.2. Discussion

Based on the above, it can be observed that NSGA-II is effective in reducing the total NPE in a scheduling plan while sacrificing its performance with restrict to TWT, especially when a very tight due date is presented. However, it can be expected that this sacrifice can be neglected when there are more jobs to be produced in the work

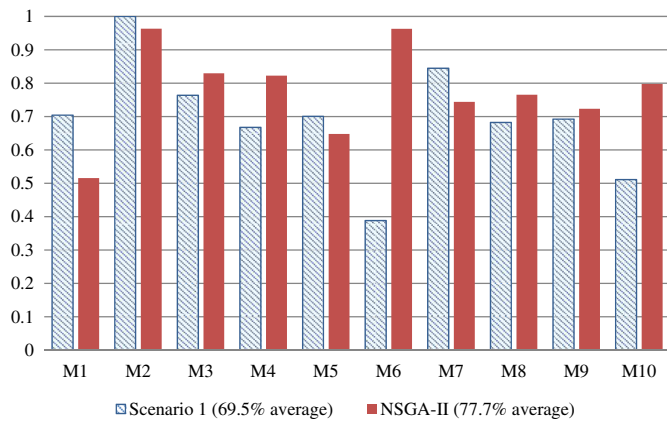


Fig. 10. Comparison in Productive time/Total up-time for machines.

shop. For instance, when combining 100 such  $10 \times 10$  job shop, the difference between  $\text{tw}_{GA}^k$  and  $\text{tw}_{S1}^k$  only takes a very small portion of the total weighted production time. Nevertheless, the decrease in the total NPE will become a more and more considerable along with the increasing number of jobs. The upper (part A) and bottom (part B) of Fig. 9 represent the Gantt charts of optimised schedules of SBH and NSGA-II respectively when  $k = 1.5$ . It is easy to observe that the schedule produced by NSGA-II has a higher ratio of Production Time compared to the Total Up-Time of the machines (PT/TUP) for most of the machines, as shown in Fig. 10. In this case, the average values of PT/TUP for all machines in S1 and the NSGA-II optimisation scenario are 69.5% and 77.7% respectively. From above, the scheduling plans produced by NSGA-II are more preferable for managers when considering the real life job shop type manufacturing system, since the varieties and amounts of components in the real manufacturing circumstance will largely increase compared to the simple  $10 \times 10$  job shop, and the PT/TUP is a very important indicator for the shop floor management. On the other hand, from the experimental perspective, the algorithm will potentially reduce the total NPE without sacrificing its performance on minimising the TWT for some job shop instances other than the E-F&T  $10 \times 10$ . Thus, more job shop instances should be applied to investigate the performance of NSGA-II on the ECT problem in future work. In addition, it can be observed from Fig. 8 that the less tight the due date, the less deterioration in minimising TWT objective, i.e. the more non-bottleneck machines in the manufacturing system, the larger opportunity to reduce the total NPE.

## 6. Conclusions and future work

Reducing electricity consumption as well as keeping good performance in classical scheduling objectives in job shops is a difficult problem that can take a large amount of time to optimally solve. The model for the Multi-objective Total Non-processing Electricity Consumption (NPE) and Total Weighted Tardiness (TWT) Job Shop Scheduling problem has been developed in this paper. For solving this problem, the multi-objective optimisation algorithm NSGA-II is applied. The performance of the algorithm has been tested on an extended version of Fisher and Thompson  $10 \times 10$  job shop scenario which incorporates electrical consumption profiles for the machine tools. In addition, a comparison experiment has been applied where the Shifting Bottleneck Heuristic and the Local Search Heuristic had been adopted as the single objective optimisation techniques to deliver the baseline scenario of the E-Fisher and Thompson  $10 \times 10$  job shop. The result of the comparison indicates that by applying NSGA-II, the total non-processing electricity consumption in the job shop is decreasing significantly, but at the

sacrifice of its performance on the total weighted tardiness objective up to a certain level. However, it can be expected that this sacrifice can be neglected if the number of successive jobs is increasing. This makes the optimisation method developed in this paper effective to reduce the electricity consumption in a real manufacturing circumstance. Since in a real job shop, the amount of jobs is much larger than that of the simple  $10 \times 10$  case and is scheduled over longer periods of time. In addition, the deterioration in the TWT objective will be less if bottlenecks in the job shop can be reduced, i.e. by relaxing the due dates of the jobs.

In future work, the algorithm should be tested on wider set of job shop scenarios to validate its more general applicability. This paper only focused on how to reduce the total NPE in a basic job shop by changing the processing sequence of jobs on each machine. However, the Turn off/Turn on method developed by Mouzon et al. (2007) is another very effective approach in achieving this objective. Therefore, developing new algorithms which enable both of the sequencing and Turn Off/Turn On approaches to be optimally applied in solving the Electricity Consumption and Tardiness problem is worthy to be investigating. Finally, reducing the electricity consumption in a dynamic job shop should be studied in the future. Existing dynamic scheduling algorithms should be extended to reduce the electricity consumption and improve productivity for job shops where the components are arriving at the production system at randomly distributed times. This will extend the applicable range of the developed multi-objective optimisation methodology to include stochastic manufacturing systems which are widely used in the real manufacturing world.

## References

- Aughney, N., O'Donnell, G.E., 2012. Lean energy: a methodology to characterise and optimise energy and resource consumption within manufacturing process chains. In: Proceedings of the 10th Global Conference on Sustainable Manufacturing (CIRP), pp. 718–723.
- Avram, I.O., 2010. Machine Tool Use Phase Modeling and Analysis with Environmental Considerations. ÉCOLE POLYTECHNIQUE FÉDÉRALE DE LAUSANNE.
- Avram, O.I., Xirouchakis, P., 2011. Evaluating the use phase energy requirements of a machine tool system. Journal of Cleaner Production 19, 699–711.
- Baniszewski, B., 2005. An Environmental Impact Analysis of Grinding. Department of Mechanical Engineering, Massachusetts Institute of Technology, pp. 1–40.
- Bruzzzone, A.A.G., Anghinolfi, D., Paolucci, M., Tonellia, F., 2012. Energy-aware scheduling for improving manufacturing process sustainability: a mathematical model for flexible flow shops. CIRP Annals – Manufacturing Technology 61, 459–462.
- Cheng, R., Gen, M., Tsujimura, Y., 1999. A tutorial survey of job-shop scheduling problems using genetic algorithms, part II: hybrid genetic search strategies. Computers & Industrial Engineering 36, 343–364.
- Dahal, K.P., Tan, K.C., Cowling, P.I., 2007. Evolutionary Scheduling.
- Dahmus, J.B., 2007. Applications of Industrial Ecology Manufacturing, Recycling, and Efficiency. Department of Mechanical Engineering, Massachusetts Institute of Technology.
- Dahmus, J.B., Gutowski, T.G., 2004. An Environmental Analysis of Machining, pp. 1–10. Anaheim, California USA.
- Deb, K., Pratap, A., Agarwal, S., Meyarivan, T., 2002. A fast and elitist multiobjective genetic algorithm NSGA-II. IEEE Transactions on Evolutionary Computation 6, 182–197.
- Diaz, N., Choi, S., Helu, M., Chen, Y., Jayanathan, S., Yasui, Y., Kong, D., Pavanaskar, S., Dornfeld, D., 2010. Machine Tool Design and Operation Strategies for Green Manufacturing, pp. 1–6.
- Diaz, N., Helu, M., Jarvis, A., Tonissen, S., Dornfeld, D., Schlosser, R., 2009. Strategies for Minimum Energy Operation for Precision Machining.
- Dietmair, A., Verl, A., 2009. Energy consumption forecasting and optimisation for tool machines. Modern Machinery Science Journal, 63–67.
- Drake, R., Yildirim, M.B., Twomey, J., Whitman, L., Ahmad, J., Lodhia, P., 2006. Data Collection Framework on Energy Consumption in Manufacturing. Institute of Industrial Engineering Research Conference.
- Dufloy, J.R., Sutherland, J.W., Dornfeld, D., Herrmann, C., Jeswiet, J., Kara, S., Hauschild, M., Kellens, K., 2012. Towards energy and resource efficient manufacturing: a processes and systems approach. CIRP Annals – Manufacturing Technology 61, 587–609.
- Fang, K., Uhan, N., Zhao, F., Sutherland, J.W., 2011. A New Shop Scheduling Approach in Support of Sustainable Manufacturing, pp. 305–310. Berlin, Heidelberg.
- Fisher, H., Thompson, G.L., 1963. Probabilistic learning combinations of local job-shop scheduling rules. In: Thompson, J.F.M.a.G.L. (Ed.), Industrial Scheduling. Prentice-Hall, Englewood Cliffs, NJ, pp. 225–251.

- Fysikopoulos, A., Papacharalampopoulos, A., Pastras, G., Stavropoulos, P., George, C., 2013. Energy efficiency of manufacturing processes: a critical review. In: *Procedia CIRP – Forty Sixth CIRP Conference on Manufacturing Systems 2013*, vol. 7, pp. 628–633.
- Gutowski, T., Murphy, C., Allen, D., Bauer, D., Bras, B., Piwonka, T., Sheng, P., Sutherland, J., Thurston, D., Wolff, E., 2005. Environmentally benign manufacturing: observations from Japan, Europe and the United States. *Journal of Cleaner Production* 13, 1–17.
- Harrison, T.P., Lee, H.L., Neale, J.J., 2004. *The Practice of Supply Chain Management: where Theory and Application Converge*. Springer-Verlag.
- He, Y., Liu, B., Zhang, X., Gao, H., Liu, X., 2012a. A modeling method of task-oriented energy consumption for machining manufacturing system. *Journal of Cleaner Production* 23, 167–174.
- He, Y., Liu, F., Wu, T., Zhong, F.P., Peng, B., 2012b. Analysis and estimation of energy consumption for numerical control machining. *Journal of Engineering Manufacture* 226, 255–266.
- Jain, A.S., Meeran, S., 1998. A State-of-the-art Review of Job-shop Scheduling Techniques.
- Kalla, D., Twomey, J., Overcash, M., 2009. MR4 Turning Process Unit Process Life Cycle Inventory, pp. 1–28.
- Kilian, L., 2008. The economic effects of energy price shocks. *Journal of Economic Literature* 46, 871–909.
- Kordonowy, D., 2003. *A Power Assessment of Machining Tools*. Massachusetts Institute of Technology.
- Li, W., Zein, A., Kara, S., Herrmann, C., 2011. An Investigation into Fixed Energy Consumption of Machine Tools, pp. 268–273.
- Liu, M., Wu, C., 2008. *Intelligent Optimization Scheduling Algorithms for Manufacturing Process and Their Applications*. National Defense Industry Press.
- Marler, R.T., Arora, J.S., 2004. Survey of multi-objective optimization methods for engineering. *Structural and Multidisciplinary Optimization* 26, 369–395.
- Mouzon, G., 2008. *Operational Methods and Models for Minimisation of Energy Consumption in a Manufacturing Environment*. Wichita State University.
- Mouzon, G., Yildirim, M.B., 2008. A Framework to Minimize Total Energy Consumption and Total Tardiness on a Single Machine. Wichita State University, pp. 105–116.
- Mouzon, G., Yildirim, M.B., Twomey, J., 2007. Operational methods for minimization of energy consumption of manufacturing equipment. *International Journal of Production Research* 45, 4247–4271.
- Munoz, A.A., Sheng, P., 1995. An analytical approach for determining the environmental impact of machining processes. *Journal of Materials Processing Technology* 53, 736–758.
- Nebro, A., Durillo, J., 2011. A Java framework for multi-objective optimisation. *Advances in Engineering Software* 42, 760–771.
- Ono, I., Yamamura, M., Kobayashi, S., 1996. A Genetic Algorithm for Job Shop Scheduling Problems Using Job Based Order Crossover, pp. 3–8.
- Özügen, C., Özbakır, L., Yavuz, Y., 2010. Mathematical models for job-shop scheduling problems with routing and process plan flexibility. *Applied Mathematical Modelling* 34, 1539–1548.
- Pinedo, M.L., 2009. *Planning and Scheduling in Manufacturing and Services*. Springer.
- Pinedo, M.L., 2012. *Scheduling: Theory, Algorithms, and Systems*. Springer.
- Quilligan, F., Upton, C., 2012. Visual decision support for energy aware manufacturing. In: *Proceedings of the 10th Global Conference on Sustainable Manufacturing (CIRP)*, pp. 453–458.
- Rabiee, M., Zandieh, M., Ramezani, P., 2012. Bi-objective partial flexible job shop scheduling problem: NSGA-II, NPGA, MOGA and PAES approaches. *International Journal of Production Research* 50, 7327–7342.
- Rajemi, M.F., 2010. *Energy Analysis in Turning and Milling*. School of Mechanical, Aerospace and Civil Engineering. The University of Manchester.
- Sabuncuoglu, I., Bayiz, M., 1999. Job shop scheduling with beam search. *European Journal of Operational Research* 118, 390–412.
- Shi, R., Zhou, Y., Zhou, H., 2007. A hybrid evolutionary algorithm for bi-objective job shop scheduling problems. *Control and Decision* 22, 1228–1234.
- Subai, C., Baptiste, P., Niel, E., 2006. Scheduling issues for environmentally responsible manufacturing: the case of hoist scheduling in an electroplating line. *International Journal of Production Economics* 99, 74–87.
- Tang, D., Du, K., Li, L., 2006. On the development path of Chinese manufacturing industry based on resource restraint. *Jiangsu Social Sciences* 4, 51–58.
- Vázquez-Rodríguez, J.A., Petrovic, S., 2010. A new dispatching rule based genetic algorithm for the multi-objective job shop problem. *Journal of Heuristics* 16, 771–793.
- Vilcot, G., Billaut, J.-C., 2008. A tabu search and a genetic algorithm for solving a bicriteria general job shop scheduling problem. *European Journal of Operational Research* 190, 398–411.
- Wang, J., Li, J., Huang, N., 2011. Optimal vehicle batching and sequencing to reduce energy consumption and atmospheric emissions in automotive paint shops. *International Journal of Sustainable Manufacturing* 2, 141–160.
- Wang, Y.M., Yin, H.L., Wang, J., 2009. Genetic algorithm with new encoding scheme for job shop scheduling. *The International Journal of Advanced Manufacturing Technology* 44, 977–984.