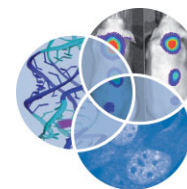


## Advanced Review



# Specificity factors in cytoplasmic polyadenylation

Amanda Charlesworth,<sup>1</sup> Hedda A. Meijer<sup>2</sup> and Cornelia H. de Moor<sup>3</sup>

Poly(A) tail elongation after export of an messenger RNA (mRNA) to the cytoplasm is called cytoplasmic polyadenylation. It was first discovered in oocytes and embryos, where it has roles in meiosis and development. In recent years, however, has been implicated in many other processes, including synaptic plasticity and mitosis. This review aims to introduce cytoplasmic polyadenylation with an emphasis on the factors and elements mediating this process for different mRNAs and in different animal species. We will discuss the RNA sequence elements mediating cytoplasmic polyadenylation in the 3' untranslated regions of mRNAs, including the CPE, MBE, TCS, eCPE, and C-CPE. In addition to describing the role of general polyadenylation factors, we discuss the specific RNA binding protein families associated with cytoplasmic polyadenylation elements, including CPEB (CPEB1, CPEB2, CPEB3, and CPEB4), Pumilio (PUM2), Musashi (MSI1, MSI2), zygote arrest (ZAR2), ELAV like proteins (ELAVL1, HuR), poly(C) binding proteins (PCBP2,  $\alpha$ CP2, hnRNP-E2), and Bicaudal C (BICC1). Some emerging themes in cytoplasmic polyadenylation will be highlighted. To facilitate understanding for those working in different organisms and fields, particularly those who are analyzing high throughput data, HUGO gene nomenclature for the human orthologs is used throughout. Where human orthologs have not been clearly identified, reference is made to protein families identified in man. © 2013 John Wiley & Sons, Ltd.

**How to cite this article:**

*WIREs RNA* 2013, 4:437–461. doi: 10.1002/wrna.1171

## THE POLY(A) TAIL, INITIAL SYNTHESIS, AND FUNCTION

We shall start with a brief overview of nuclear polyadenylation so that we can provide context for discussing cytoplasmic polyadenylation. For more detail, the reader is referred to other reviews that discuss nuclear polyadenylation specifically.<sup>1–6</sup> The nuclear polyadenylation of eukaryotic messenger RNAs was discovered in the 1970s and soon was shown to be a nearly universal characteristic of this RNA species.<sup>1</sup> In the following decades,

polyadenylation was shown to follow cleavage of the newly transcribed messenger RNA (mRNA) and to be tightly coupled to transcription and to splicing of the 3' intron.<sup>1–3</sup> Cleavage of the nascent mRNA is now known to be required for normal transcription termination as well as for polyadenylation.<sup>4</sup>

The target selectivity of cleavage and polyadenylation in mammals is mediated by four sequence elements flanking the cleavage site, as depicted in Figure 1.<sup>5–8</sup> Subunit 1 of the cleavage and polyadenylation specificity complex, CPSF1 (CPSF160), binds the well-known poly(A) signal (AAUAAA or AUUAAA), normally located 15–30 nucleotides upstream of the cleavage site. The CPSF complex also contains CPSF3 (CPSF73) the endonuclease responsible for cleavage,<sup>9</sup> and FIP1L, the factor that recruits the poly(A) polymerase together with CPSF1.<sup>10,11</sup> The cleavage stimulating factor (CSTF) complex binds to a GU or U rich sequence downstream of the cleavage site called the downstream element (DSE). The

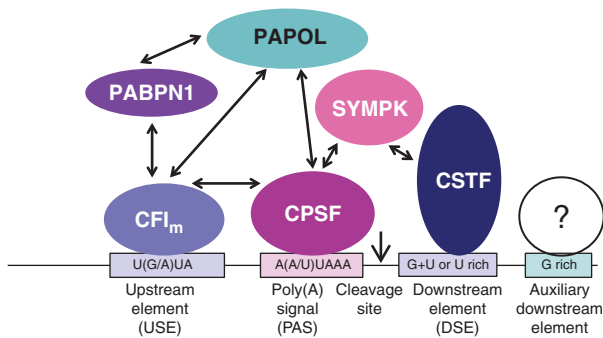
\*Correspondence to: [cornelia.demoor@nottingham.ac.uk](mailto:cornelia.demoor@nottingham.ac.uk)

<sup>1</sup>Department of Integrative Biology, University of Colorado Denver, Denver, CO, USA

<sup>2</sup>MRC Toxicology Unit, University of Leicester, Leicester, UK

<sup>3</sup>School of Pharmacy, University of Nottingham, Nottingham, UK

Conflict of interest: The authors have declared no conflicts of interest for this article.



**FIGURE 1** | The nuclear cleavage and polyadenylation complex in vertebrates. The Cleavage and Polyadenylation Specificity Factor (CPSF) protein complex binds to the poly(A) signal PAS, it contains CPSF1–4 and the associated factors FIP1L and Symplekin (SYMPK). The CPSF3 subunit is the endonuclease acting at the cleavage site. The Cleavage Factor 1 complex ( $CFI_m$ ) recognizes the upstream element (USE), it is composed of NUDT21, CPSF6, and CPSF7. The CSTF complex recognizes the GU- or U-rich downstream element (DSE). CPSF, CSTF, SYMPK, and  $CFI_m$  interact at the protein level, stabilizing the RNA binding, thus promoting correct cleavage and polyadenylation site recognition and recruitment of the poly(A) polymerase (PAPOLA or PAPOLG). The nuclear poly(A) binding protein (PABPN1) interacts with  $CFI_m$  and PAPOLA and contributes to the efficiency of polyadenylation.<sup>17–19</sup> Double arrows indicate interactions. The cleavage site is indicated by a bold single headed arrow. Some of these interactions have been inferred from work in yeast. For further details, see two recent reviews.<sup>5,8</sup>

association of the CSTF and CPSF complexes with the RNA is thought to be the most important for the selection of the cleavage site, and the two complexes are connected by the 3' processing scaffold protein Symplekin (SYMPK).<sup>12,13</sup> The Cleavage Factor I ( $CFI_m$ ) is a complex of NUDT21 ( $CFI_m25$ , CPSF5) and CPSF6 ( $CFI_m68$ ), or CPSF7 ( $CFI_m59$ ). NUDT21 binds upstream of the poly(A) signal to the upstream element (USE), which contains U(G/A)UA sequences that enhance recognition of the cleavage site.<sup>5,14</sup> A fourth sequence element contributing to cleavage site recognition is a G rich sequence downstream of the DSE, for which the binding factor has not yet been determined.<sup>5</sup> If the poly(A) signal diverges from AAUAAA or AUUAAA, the sequence of the other three sequences become more important for correct cleavage. Alternative poly(A) site selection has recently been shown to be regulated for many mRNAs and is likely to play an important role in post-transcriptional gene regulation by generating mRNAs with different 3' untranslated regions (UTRs).<sup>15,16</sup>

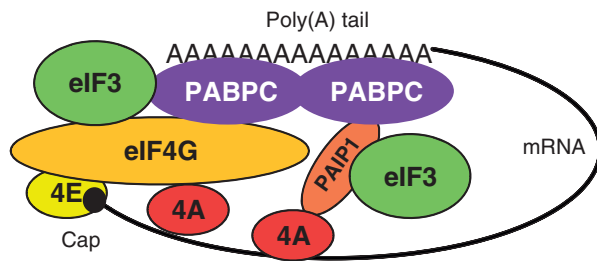
After cleavage, the poly(A) tail is added by a nuclear poly(A) polymerase. The canonical enzyme that is thought to mediate this in most cells and for most mRNAs is poly(A) polymerase  $\alpha$  (PAPOLA), which was originally isolated from calf thymus.<sup>20</sup> It is required for both the polyadenylation and the cleavage

reaction. However, another canonical mammalian poly(A) polymerase  $\gamma$  (PAPOLG) has been found in the nuclei of many tumor cells and cell lines<sup>21</sup> and was the only poly(A) polymerase detected in a proteomic study of polyadenylation complexes.<sup>22</sup> In addition, the noncanonical poly(A) polymerase TUT1 (Star-PAP, PAPD2) has been shown to mediate the nuclear polyadenylation of specific mRNAs.<sup>23–28</sup>

During cleavage and polyadenylation, a number of proteins are deposited on the mRNA which appear to limit the poly(A) tail size to 200–250 nt and play a role in mRNA export. These include nucleophosmin (NPM1), the nuclear poly(A) binding proteins PABPN1 and NAB2, as well as export factors.<sup>29–32</sup> The removal of the cleavage and polyadenylation complex from the mRNA is also part of the export process.<sup>33</sup>

In the cytoplasm, the poly(A) tail enhances translational efficiency and protects the mRNA from degradation.<sup>34,35</sup> These functions are mediated by the cytoplasmic poly(A) binding proteins (PABPs), the most well characterized of which is PABPC1 (PABP1 or PAB1). Cytoplasmic PABPs first bind to the poly(A) tail in the nucleus and are exported with the newly made mRNA, where additional PABP molecules may bind.<sup>36–38</sup> During translation, PABPs mediate the formation of the 'closed loop complex' (Figure 2) in which interactions between PABP and eIF4G, a subunit of the cap binding translation initiation complex, connect the ends of the mRNA. The cap binding complex recruits the ribosome through interactions with eIF3 and contains the eIF4A helicase, which unwinds the 5' untranslated region of the mRNA. In addition, PABP can recruit further eIF4A and eIF3 through its interaction with PAIP1.<sup>39–41</sup> In plants, a further PABPC1 interaction with the eIF4A binding factor eIF4B has been established<sup>42,43</sup> and a similar complex may also exist in human cells.<sup>44</sup> Thus, the poly(A) tail stimulates translation by remodeling of the mRNP (through eIF4A) and loading of ribosomes (through eIF3), all mediated by interactions with PABPCs.

The poly(A) tail also protects the mRNA from degradation, a process in which PABPs play a complex role, by both preventing and stimulating removal of the poly(A) tail, depending on the presence of different deadenylation complexes.<sup>34</sup> Most mRNA degradation in eukaryotes is thought to occur by the deadenylation-dependent decapping pathway, in which the poly(A) tail must be shortened to 10–15 nt before the mRNA is decapped and degraded by exonucleases.<sup>45–47</sup> The sequences regulating mRNA stability are usually found in the 3' UTR of the mRNA, although elements in the 5' UTR and the coding region can also participate. Deadenylation, the removal of the



**FIGURE 2** | The closed loop complex enhances translation by increasing eIF4A and eIF3 recruitment. Cytoplasmic poly(A) binding proteins (e.g., PABPC1 or PABPC1L) stabilize the cap binding translation initiation complex consisting of eIF4E (4E), eIF4G, and eIF4A (4A), forming the closed loop complex. In addition, PABPC proteins can bind poly(A) binding protein interacting protein 1 (PAIP1), which, like eIF4G can bind eIF4A and the ribosome recruiting complex eIF3. This leads to enhanced translation mediated by the poly(A) tail. For references, see text.

poly(A) tail by specific 3' exonucleases, is a frequently regulated step in the determination of mRNA stability. Destabilizing 3' UTR elements include AU and GU rich destabilizing elements that recruit proteins binding to deadenylating enzymes.<sup>45,48,49</sup> However, mRNAs with short poly(A) tails are not rare in tissue culture cells<sup>50</sup> and many 3' UTRs can bind ELAVL1 (HuR) through U rich elements, which prevents the degradation of mRNAs with short tails.<sup>51–53</sup> The poly(A) tail of an mRNA is therefore involved in its function throughout its lifetime, functioning in mRNA export, translation, and stability, and is the target of extensive regulation.

## THE ROLE OF CYTOPLASMIC POLYADENYLATION IN THE REGULATION OF GENE EXPRESSION

Cytoplasmic polyadenylation is the elongation of the poly(A) tail of an mRNA after it has been exported into the cytoplasm. Typically, this process increases protein expression from specific mRNAs by the translational activation of stored mRNAs with short poly(A) tails.<sup>54,55</sup> In general mRNAs are thought to be synthesized with long poly(A) tails and the default state is for an mRNA to be translated upon exit from the nucleus. Therefore, regulation by cytoplasmic polyadenylation requires that the mRNA recruits factors that deadenylate and translationally repress the newly exported mRNA, as well as respond to a specific signal to induce expression by cytoplasmic polyadenylation

So far, the defined repressive elements are all in the 3' untranslated regions of the mRNA and the same elements that convey activation by cytoplasmic

polyadenylation sometimes can also mediate translational repression and mRNA deadenylation.<sup>56,57</sup> In addition, these mRNAs often contain separate regions that recruit other deadenylation and translational repression factors.<sup>58–64</sup> Especially widespread in early development are mRNAs with GU-rich elements, which bind the CELF family of deadenylation factors and mediate deadenylation in the *Xenopus* embryo, counteracting cytoplasmic polyadenylation activated in the oocyte.<sup>49,65–68</sup> Although a shorter poly(A) tail generally reduces translational efficiency, the lack of a poly(A) tail alone is not sufficient for efficient inhibition of translation, as many translational repressors can reduce the expression from nonadenylated mRNAs significantly in cells.<sup>56,69</sup> Consequently, in addition to recruiting deadenylating enzymes, mRNAs that are regulated by cytoplasmic polyadenylation also rely on other mechanisms to reduce translation efficiency, predominantly through preventing the association of the cap-binding translation initiation complex,<sup>55,64,70</sup> although repression by interference with the elongation phase of protein synthesis has also been implicated recently.<sup>71</sup> In addition, several deadenylation factors are able to repress translation directly, independently of their deadenylation activity.<sup>70,72</sup> In microRNA-mediated translational repression, deadenylation is known to be secondary to efficient translational repression.<sup>73–77</sup> It is not known if deadenylation follows or precedes translational repression in mRNAs repressed by other deadenylation factors.

The activation of translation by cytoplasmic polyadenylation is presumably mediated by the increased recruitment of poly(A) binding proteins to the elongated poly(A) tail and enhanced formation of the closed loop complex.<sup>34,35</sup> However, a few studies indicate that active cytoplasmic polyadenylation or other remodeling of the mRNP is required for translational activation in addition to the presence of a poly(A) tail,<sup>78–80</sup> as was reviewed previously in more detail.<sup>70</sup> In theory, cytoplasmic polyadenylation should also be able to stabilize mRNAs that are dependent on deadenylation for their degradation.<sup>45–47</sup> Interestingly, two such potential cases have been reported. In zebrafish embryos, the binding of a protein that appears to mediate cytoplasmic polyadenylation counteracts the destabilization of germline mRNAs by a microRNA.<sup>81</sup> In addition, in the nematode *Caenorhabditis elegans*, mutation of the cytoplasmic polyadenylation machinery leads to a reduction in the levels of its target mRNAs.<sup>82</sup>

Regulation of translation by cytoplasmic polyadenylation allows nuclear export of mRNAs to be separated from the synthesis of the encoded proteins

in time and space. Many of these mRNAs are indeed localized to specific positions in the cell, for instance Bicoid mRNA in early *Drosophila* embryos, CAMK2A mRNA in the dendrites of neurons and mRNAs encoding cell cycle regulators on the spindle of mitotic or meiotic cells.<sup>83–86</sup> In several cases, the sequence elements and RNA binding proteins that mediate the control of poly(A) tail size also contribute to the intracellular localization of mRNAs. Cytoplasmic polyadenylation itself is therefore only one function of a family of RNP complexes that can also mediate translational repression, deadenylation, and mRNA localization.<sup>54,55,70,87</sup> In the rest of this review we focus on the components of these complexes that determine which mRNAs are targeted by cytoplasmic polyadenylation, the cytoplasmic polyadenylation specificity factors (CyPSFs).

## CYTOPLASMIC POLYADENYLATION OF mRNAs IN GERM CELLS AND EMBRYOS

Cytoplasmic polyadenylation was first described in the 1970s in sea urchin embryos.<sup>88</sup> Since then it has been observed in the oocytes and early embryos of many animal species including bivalves (*Spisula*), insects (*Drosophila*), amphibians (e.g., *Xenopus*), fish (e.g., zebrafish), and mammals (e.g., mouse).<sup>86,89–94</sup> In these developmental stages transcription is absent and posttranscriptional regulation is therefore particularly important and more readily detectable. The factors mediating cytoplasmic polyadenylation of mRNAs have predominantly been characterized in *Xenopus* oocytes and early embryos.<sup>94–98</sup> The large size of *Xenopus* oocytes and embryos enables injection of radioactive RNA substrates, making it relatively easy to demonstrate that cytoplasmic polyadenylation occurs and to map the elements. Most of the mRNAs targeted by cytoplasmic polyadenylation in oocytes and early embryos are directly involved in meiosis and/or mitosis.<sup>99–102</sup> In all cases in which this was examined, cytoplasmic polyadenylation in *Xenopus* requires the poly(A) signal that is also used for nuclear polyadenylation.<sup>59,103–106</sup> In addition, specific sequence elements in the 3' untranslated region are required. Five different sequence elements mediating cytoplasmic polyadenylation have been characterized in this system. Only one of these elements and its associated factors, the cytoplasmic polyadenylation element (CPE), has so far been studied in detail. Table 1 gives a summary of the evidence for the mRNA elements and specificity factors that may mediate cytoplasmic polyadenylation, as discussed further below.

## The Cytoplasmic Poly(A) Polymerases in Oocytes and Embryos

Cytoplasmic polyadenylation must be mediated by poly(A) polymerases that are presumably recruited to specific mRNAs by CyPSFs and activated at the appropriate time. The best characterized cytoplasmic poly(A) polymerase, PAPD4 (Gld-2) was first discovered in *C. elegans* and its enzymatic activity was confirmed in mammalian orthologs.<sup>91,138</sup> This enzyme is now thought to be the main polymerase associated with the CyPSF cytoplasmic polyadenylation element binding protein (CPEB) in full grown *Xenopus* oocytes,<sup>95</sup> while in *Drosophila* oogenesis the CPEB homolog Orb first mediates cytoplasmic polyadenylation with the classical nuclear poly(A) polymerase (PAPOLA) before switching to a PAPD4 ortholog.<sup>139</sup> *In vitro* studies indicated that *Xenopus* CPEB can also recruit PAPOLA to mediate polyadenylation and a cytoplasmic variant has been characterized, so it is possible that this poly(A) polymerase plays a role in cytoplasmic polyadenylation in vertebrate oocytes as well.<sup>140,141</sup> However, a different study has reported that such truncated PAPOLA variants lack polyadenylation activity *in vitro*, so more evidence for a cytoplasmic role for this enzyme in oocytes is required.<sup>142</sup> Although early studies indicated that PAPD4 is also the poly(A) polymerase involved in CPE mediated polyadenylation in mouse oocytes,<sup>143</sup> knockout mice do not have changes in cytoplasmic polyadenylation in their oocytes.<sup>144</sup> However, an ortholog of a third conserved poly(A) polymerase, PAPD5 (Gld-4) can compensate for PAPD4 (Gld-2) loss in oogenesis in *C. elegans*, and this protein can mediate CPEB1 dependent cytoplasmic polyadenylation in human fibroblasts, so perhaps such a compensation functions in mouse oocytes as well.<sup>123,145</sup> A testis specific cytoplasmic poly(A) polymerase with high homology to PAPOLA, PAPOLB (TPAP), is required for sperm development in mouse, but it is unknown which CyPSF this enzyme is partnered with.<sup>146–150</sup> This data therefore indicate that four poly(A) polymerases could participate in cytoplasmic polyadenylation in germ cell development in animals, and further research is required to determine which polymerases are involved in cytoplasmic polyadenylation in each stage of vertebrate oogenesis and development.

## The CPE and Its Binding Proteins

The CPE is a sequence that was originally characterized as conferring cytoplasmic polyadenylation during *Xenopus* oocyte maturation.<sup>107</sup> Its first specific binding factor, now called CPEB1, was isolated from oocyte extract and shown to convey cytoplasmic

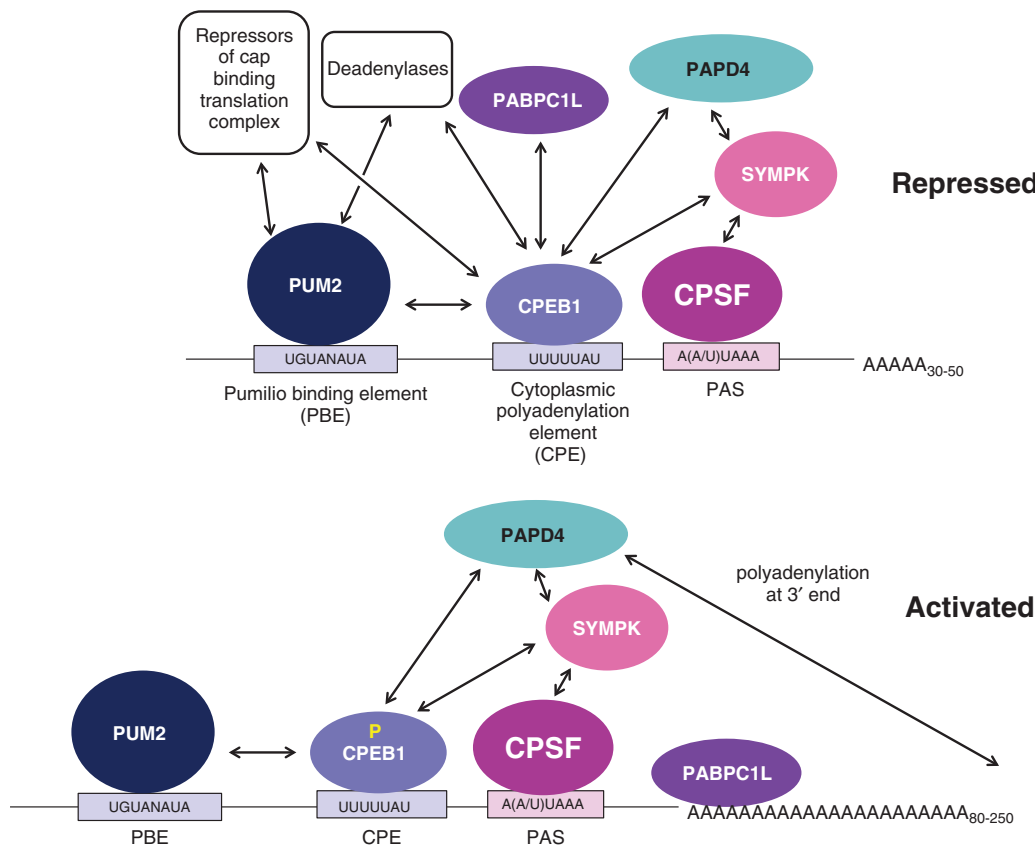
**TABLE 1** | Summary of Potential Specificity Factors for Cytoplasmic Polyadenylation with Human Orthologs. For Further Details, See Text.

Factor	Synonyms/Orthologs	Binding Site	Evidence for Cytoplasmic Polyadenylation
CPEB1	CPEB, Orb	<b>CPE</b> Strong: UUUUUAU, UUUUAAU; Weak: UUUUACU,UUUUAAGU, UUUCAU <sup>99</sup>	CPE confirmed by polyadenylation in the absence of transcription and cytoplasmic injection of RNA in <i>Xenopus</i> and mouse oocytes, e.g. <sup>107–110</sup> CPEB1 function shown by depletion from extracts and dominant mutants in <i>Xenopus</i> . <sup>96,111</sup> Good correlation in mammalian neurons and mitotic cells. <sup>112,110</sup>
CPEB4	Orb2	<b>CPE</b> Similar to CPEB1. <sup>100,112</sup> Or higher affinity for U rich sequence with secondary structure. <sup>113</sup>	Injection into <i>Xenopus</i> oocytes late in maturation for CPE and knockdown for CPEB4. Correlation between element and protein function in mitotic cells <sup>100,112</sup>
MSI1	Musashi	<b>MBE</b> (G/A) U <sub>1-3</sub> AGU <sup>114</sup>	Injection of RNA for the MBE and depletion as well as dominant negative mutants in <i>Xenopus</i> oocytes. <sup>103,115–117</sup>
ZAR2	Zygote Arrest 2	<b>TCS</b> (A/U)UU(A/G)UCU <sup>59</sup>	Injection of RNA demonstrated existence of TCS mediated polyadenylation in <i>Xenopus</i> oocytes. <sup>58,59,63</sup> ZAR2 binds to the element but no other evidence for a function of this protein. <sup>63</sup>
PCBP2	$\alpha$ CP2, hnRNP-E2	<b>C-CPE</b> C-rich, e.g. CCCUC CCUCCUCCCC <sup>105</sup>	Injection of RNA into <i>Xenopus</i> embryos proved existence of the element and PCBP2 binds to this element, as well as to polyadenylation factors <sup>105</sup>
ELAVL1	HuR	<b>eCPE</b> U rich, U <sub>12</sub> <sup>79,106,118</sup>	eCPE function shown by RNA injection and by polyadenylation of endogenous mRNA in the absence of transcription in <i>Xenopus</i> embryos. <sup>79,106,118</sup> ELAVL1 binds this element. <sup>119</sup>
PUM2	Pumilio, FBF1, FBF2	<b>PBE</b> UGUAU(A/U)UAU <sup>120</sup>	In <i>Xenopus</i> , PUM2-CPEB1 interactions contribute to CPE mediated cytoplasmic polyadenylation in oocytes. <sup>99,121</sup> In <i>C. elegans</i> , upregulates translation in association with PAPP4 <sup>122</sup>
BICC1	Bicaudal C, GLD-3	Unknown	Interacts physically and functionally with PAPP4 and PAPP5 to activate target mRNAs in <i>C. elegans</i> . <sup>123,124</sup>
DAZL	Deleted in Azoospermia-like	GUU triplet <sup>125</sup>	No cytoplasmic polyadenylation observed in <i>Xenopus</i> oocytes, despite clear role in translational activation. <sup>126,127</sup> In zebrafish embryos, DAZL binding negates microRNA mediated mRNA destabilization, and increases poly(A) tail size. <sup>81</sup> Interacts with Pumilio. <sup>128</sup>
RBF0X2	RBM9, FOX-2	UGCAUG and others characterized in splicing substrates <sup>129,130</sup>	Binds to PAPP4 in the cytoplasm of <i>Xenopus</i> oocytes. <sup>131</sup> No evidence that binding site confers cytoplasmic polyadenylation.
FMRP	Fragile X Mental Retardation Protein	Large number of widely different elements proposed e.g. <sup>132–135</sup>	Found to interact and co-localize with PAPP4 in <i>Drosophila</i> extracts and neurons. <sup>136</sup> Functional evidence supports a role in translational repression rather than activation in oocytes. <sup>137</sup>

polyadenylation.<sup>96</sup> The four CPEB proteins conserved in vertebrates contain two RNA recognition motifs (RRMs), followed by a zinc finger domain located in the C terminus of the proteins.<sup>151,152</sup> For CPEB1, all three of these domains are required for RNA binding.<sup>153</sup>

CPEB1 and CPEB4 are required for normal *Xenopus* oocyte maturation and CPEB1 has been

implicated in regulating the cell cycle in early embryos.<sup>85,100,154,155</sup> CPEB1 knockout mice also have defects in oocyte and sperm development.<sup>156</sup> In addition, CPEB homologs in *Drosophila* and *Caenorhabditis* have been shown to mediate translational activation and play a role in germ cell development and early embryogenesis, indicating that these functions are evolutionary conserved.<sup>139,156–161</sup> Figure 3



**FIGURE 3** | Cytoplasmic polyadenylation during *Xenopus* oocyte maturation. The cytoplasmic polyadenylation element (CPE) recruits its binding protein CPEB1.<sup>96</sup> This binding can be stabilized, especially on noncanonical CPEs, by the recruitment of Pumilio (PUM2) to the Pumilio binding element (PBE) and protein–protein interactions between CPEB1 and PUM2.<sup>99,121</sup> CPEB1 in turn interacts with the cytoplasmic CPSF complex, consisting of CPSF1,2 and 4 and the associated factor SYMPK (the endonuclease CPSF3 is absent and FIP1L has not been tested).<sup>162</sup> CPSF1 recognizes the poly(A) signal (PAS). Before oocyte maturation translation is **Repressed**: CPEB1 and PUM2 mediate mRNA deadenylation and translational repression by recruiting deadenylases (CPEB1 recruits PARN,<sup>163</sup> PUM2 can bind the CNOT complex<sup>164</sup>) and disrupting closed loop complex formation (PUM2 by direct cap interaction,<sup>64</sup> CPEB1 by recruiting a choice of eIF4E binding or cap binding proteins<sup>70</sup>). In addition, CPEB1 binds the embryonic poly(A) binding protein PABPC1L.<sup>165</sup> The poly(A) polymerase PAPD4 is secured in the complex by interactions with CPEB1 and CPSF, but its activity is repressed and/or masked by active deadenylation. Upon the stimulation of meiotic maturation, translation is **Activated**: CPEB1 is phosphorylated (yellow P).<sup>166</sup> Deadenylases and translational repression complexes are ejected from the complex and/or inactivated,<sup>163,167</sup> PAPD4 mediates elongation of the poly(A) tail<sup>95</sup> and PABPC1L dissociates from CPEB1 and transferred to the poly(A) tail, where it can stimulate the formation of the closed loop complex and activate translation.<sup>168,169</sup> More details and references can be found in the text.

summarizes the regulation of translation by CPEB1 as elucidated in *Xenopus* oocytes and discussed in detail below.

The CPE is a U-rich element containing a stretch of at least four U residues with a canonical CPE being UUUUAU or UUUUAAU, which binds CPEB1.<sup>96,104,108</sup> All the variants that were used in a bioinformatic screen and correlate well with cytoplasmic polyadenylation in *Xenopus* oocytes can be found in Table 1.<sup>99</sup> The RNA binding domains of mouse CPEB3 and CPEB4 have been reported to select a distinct structured recognition element containing a U rich bulge.<sup>113</sup> However, *Xenopus* CPEB4 appears to target the same mRNAs as CPEB1 in oocytes and mediates cytoplasmic polyadenylation of the same

mRNAs, although at a later stage of meiosis.<sup>100</sup> Mammalian CPEB2 binds to sequences containing CPEs and binding can be competed with poly(U), indicating its binding site is also U-rich.<sup>170,171</sup> So far, no structures of the RNA binding domains of CPEB family proteins in complex with RNA have been published, so the relationship between the structure of the protein and the RNA elements it binds remains unclear.

In addition to the CPE, the poly(A) signal that confers nuclear cleavage and polyadenylation (AAUAAA or AUUAAA) is required for CPE-mediated cytoplasmic polyadenylation in *Xenopus* oocytes.<sup>104</sup> The protein complex recognizing the poly(A) signal is thought to be a form of CPSF, with the 160 kDa subunit (CPSF1) recognizing the RNA specifically. The

100 and 30 kDa subunits of CPSF (CPSF2 and CPSF4) are also present in the cytoplasm of *Xenopus* oocytes, while the 73 kDa endonuclease subunit (CPSF3) is absent.<sup>172</sup> Because the poly(A) signal is present in nearly all native mRNAs, mRNA specific regulation must be mediated by binding sites for CyPSFs such as the CPE, but the regulation of cytoplasmic polyadenylation could in principle be influenced by factors associated with the poly(A) signal.

### Interaction Between the Complexes Associated with the CPE and the Poly(A) Signal

The spatial arrangement of CPEs in the 3' untranslated region (3' UTR) of an mRNA is important for their function.<sup>99</sup> Two CPEs in close proximity (less than 50 nucleotides apart), mediate translational repression in immature oocytes regardless of their position in the 3' UTR. In order to mediate robust cytoplasmic polyadenylation, a CPE normally has to be within 100 nucleotides of the poly(A) signal and ideally within 25 nucleotides. Cytoplasmic polyadenylation mediated by weak CPEs benefits from the presence of a second CPE in close proximity and/or the presence of the RNA recognition element UGUANUAU.<sup>99</sup> This represents a binding site for the Pumilio (PUM2) RNA binding protein, which has a conserved interactions with CPEB proteins through protein–protein contacts and binds in their proximity on many mRNAs.<sup>173,121,120</sup> Pumilio is thought to stabilize the binding of CPEB in this context, although it is also a deadenylation factor, a translational repressor and a putative CyPSF in its own right (discussed below).<sup>64,174,175,122,164</sup> CPEB, in turn, associates with the CPSF complex bound to the poly(A) signal.<sup>172,166</sup> CPEB also recruits the scaffold protein SYMPK, which itself can interact with CPSF.<sup>95,176</sup> The cytoplasmic poly(A) polymerase PAPD4 is recruited by this complex, although the direct interactions are not yet clear. Cytoplasmic polyadenylation sequence recognition in mRNAs therefore has a multipartite character, with multiple elements recruiting proteins which also interact at the protein level. This is reminiscent of the determination of specificity in nuclear polyadenylation as depicted in Figures 1 and 3.

### Regulation of CPEB-Mediated Translational Activation in Oocytes

Activation of CPEB1-mediated cytoplasmic polyadenylation in *Xenopus* oocytes is through phosphorylation in its N terminal domains.<sup>166,111</sup> This phosphorylation can be mediated by the Aurora kinase A (AURKA) and this leads to increased binding of CPSF and expulsion of the deadenylase PARN

from the complex, shifting the balance to poly(A) tail elongation.<sup>166,163</sup> The activation of CPEB1 mediated cytoplasmic polyadenylation by Aurora kinase phosphorylation is conserved in mice.<sup>177,178</sup> However, several studies indicate that the earliest activation of CPEB1 in the *Xenopus* oocyte is mediated by a different kinase, with CDK1 activated by its non-cyclin partner Speedy/Ringo (SPDY) being a strong candidate.<sup>179–183</sup> For a more extensive discussion of the regulation of CPEB1 phosphorylation during *Xenopus* oocyte maturation, we refer to a previous review.<sup>70</sup> The N-termini of the CPEB proteins are widely divergent,<sup>151,152</sup> and the kinase activating other CPEB homologs is likely to be different. The *Drosophila* CPEB homolog Orb was recently shown to be activated through phosphorylation by casein kinase 2.<sup>184</sup> In addition, the PAN GU kinase, which resembles the NimA (Never in mitosis A, NEK) family of kinases, regulates polyadenylation of cyclin A mRNA during meiosis in *Drosophila*,<sup>185</sup> and is therefore a potential candidate for a regulator of cytoplasmic polyadenylation.

In addition to regulation by phosphorylation, the levels of CPEB proteins and their associated factors can also be regulated during oogenesis by increased synthesis or degradation. Increases are through translational activation, usually involving cytoplasmic polyadenylation. mRNAs regulated in this manner include CPEB4, Aurora kinase A (Eg2), and the cytoplasmic poly(A) polymerase PAPD4 (Gld-2) in *Xenopus* and Orb in *Drosophila*.<sup>100,186–189</sup> CPEB1 is degraded during the completion of meiosis I through a mechanism involving phosphorylation by a polo like kinase (PLK1) and the cyclin dependent kinase CDK1 (cdc2) and ubiquitination by the E3 ligase BTRC (SCF $\beta$ -TrCP).<sup>101,190,191</sup> This degradation has been proposed to be predominantly on nonRNA bound CPEB1 which is sequestered in the form of a dimer.<sup>192</sup> SYMPK-bound CPEB1 levels, presumably representing RNA bound CPEB1 in polyadenylation competent complexes, remain unchanged during oogenesis.<sup>95</sup>

The timing of translational activation of mRNAs during the oocyte maturation is critical for the correct completion of meiosis. The Mos kinase is an early player in this signal transduction cascade<sup>193</sup> and its synthesis is regulated by early cytoplasmic polyadenylation, while activation of cyclin B1 mRNA plays a later role, even though both these mRNAs contain CPEs and bind CPEB1.<sup>80,84,108,194,195</sup> CPEs that do not overlap with the poly(A) signal have been reported to mediate earlier cytoplasmic polyadenylation. In contrast, the presence of a CPE overlapping with the poly(A) signal correlates with activation of cytoplasmic polyadenylation late in

oocyte maturation, after the breakdown of the nuclear envelope in meiosis I.<sup>99,195</sup> The reduction in CPEB1 levels during late oocyte maturation is thought to lead to the availability of the poly(A) signal in these mRNAs. The addition of AU-rich elements that bind deadenylation factors can also affect the timing of cytoplasmic polyadenylation.<sup>196</sup> CPEB1-mediated polyadenylation is thought to be required for mouse oocyte maturation as well, and CPEB1 knockout mice fail to translate specific mRNAs very early in oogenesis, long before the full grown oocyte stages usually studied in *Xenopus*.<sup>177,197,109,198</sup>

### Other CPEB-Associated Factors that Influence Cytoplasmic Polyadenylation

A number of other proteins have been found associated with CPEB1 and are implicated in cytoplasmic polyadenylation in *Xenopus* oocytes. The poly(A) binding proteins PABPC1 (PAB) and PABPC1L (ePAB) both can bind to CPEB1. Embryonic poly(A) binding protein (PABPC1L) is the predominant poly(A) binding protein in vertebrate oocytes and embryos<sup>199,200</sup> and is required for oogenesis in mice and oocyte maturation in *Xenopus*.<sup>165,201</sup> PABPC1L phosphorylation is required for cytoplasmic polyadenylation in *Xenopus* oocytes and the protein transfers from CPEB1 to the poly(A) tail during cytoplasmic polyadenylation, protecting it from deadenylation.<sup>165,168</sup>

In addition, CPEB1 is bound by the GTP exchange factor xGEF, a member of the family of Rho guanine nucleotide exchange factors closely related to human ARHGEF39 (C9orf100).<sup>202,203</sup> Early in oocyte maturation, xGEF recruits a kinase complex consisting of MAP kinase (ERK2) and a complex of CDK1 and its activator Speedy (SPDY, RINGO) to CPEB1.<sup>179,180,204</sup> SPDY is required for the induction of cytoplasmic polyadenylation and is itself regulated by translational control.<sup>205,126</sup> xGEF and SPDY are therefore likely to be involved in the activation of CPEB1 mediated polyadenylation during early oocyte maturation.

### Other mRNA Specific Cytoplasmic Polyadenylation in Vertebrate Oocytes

CPEB-mediated cytoplasmic polyadenylation is by far the best studied case, but there is very good evidence that it is not the only specificity factor that can confer cytoplasmic polyadenylation to mRNAs. Another well-established RNA binding protein that mediates cytoplasmic polyadenylation is Musashi (MSI1, MSI2).<sup>206</sup> The MSI-binding element (MBE) (formerly the polyadenylation response element,

PRE) was discovered when the role of the CPE was being investigated in a larger section of the Mos 3' UTR than had been used previously.<sup>107,115</sup> This new element conferred early cytoplasmic polyadenylation to the Mos 3' UTR in oocytes that was maximal prior to meiosis I in the absence of CPEs and CPEB activity. Indeed, the TATA-BP2 mRNA is polyadenylated during oocyte maturation but does not have a recognizable CPE, only an MBE.<sup>103</sup> MSI1 was identified as the *trans*-acting factor and like the MBE, shown to activate translation during oocyte maturation.<sup>103,115</sup> A dominant negative MSI1 mutant and knockdown of MSI1 (and the partially compensating MSI2) using antisense oligodeoxynucleotides, prevented the polyadenylation of endogenous Mos mRNA and blocked maturation.<sup>103,116</sup> This indicates that in addition to CPEB, MSI also plays an important role in cytoplasmic polyadenylation during oocyte maturation. Moreover, MSI1 is activated by phosphorylation that is dependent on Ringo/Speedy (SPDY) synthesis, and this phosphorylation is co-incident with Mos polyadenylation.<sup>116</sup> Nonphosphorylatable MSI1 did not rescue oocyte maturation after removal of endogenous MSI, further strengthening the importance of MSI1 in oocyte maturation. The role of MSI1 in germ cell development and meiotic progression has also been described in *Drosophila* and mouse.<sup>207</sup> Like the CPE, the MBE requires a poly(A) signal for cytoplasmic polyadenylation, but so far no interactions between MSI proteins and the polyadenylation machinery have been described.

The translation control sequence (TCS) is a third *cis*-element that mediates cytoplasmic polyadenylation during *Xenopus* oocyte maturation. The TCS was discovered when the role of CPEs was being investigated in the WEE1 3' UTR.<sup>58,59</sup> In the absence of CPEs, in both reporter constructs and the endogenous Pcm-1 mRNA, the TCS mediates early cytoplasmic polyadenylation, at least two hours prior to meiosis I. Like the CPE and the MBE, polyadenylation by the TCS requires the poly(A) signal. The TCS also confers translational repression in immature oocytes and translational activation during oocyte maturation. Recently, a *trans*-acting factor for the TCS has been found. Zygote arrest 2 (ZAR2) binds to the TCS and, like the TCS, represses translation in immature oocytes when tethered to a reporter RNA.<sup>63</sup> This repression is relieved during oocyte maturation. ZAR2 and its homolog ZAR1 have been implicated in the early cleavage phase of mouse embryogenesis,<sup>208,209</sup> supporting a function for these proteins in the regulation of early developmental processes. The role of ZAR2 in the regulation of polyadenylation has yet to be determined.



The single RRM protein DAZL has been shown to be critical for male and female germ cell differentiation, oocyte maturation and the oocyte-zygotic transition in several vertebrate species.<sup>102,210,211</sup> In most cases, DAZL acts by inducing translational activation of its target mRNAs,<sup>210</sup> but its binding site, a GUU triplet,<sup>125</sup> has not been reported to convey cytoplasmic polyadenylation in *Xenopus* oocytes.<sup>126,127</sup> In zebrafish embryos, DAZL binding regulates the stability of its target mRNAs, presumably to restrict their expression to the future germ cells, as this protein is normally germ cell specific.<sup>81,212–214</sup> In one such study, DAZL was reported to overcome miR-430 mediated destabilization by the 3' UTR of its own mRNA. This was accompanied by cytoplasmic polyadenylation of the injected mRNA.<sup>81</sup> In contrast, in mouse oocytes, the translational activation and cytoplasmic polyadenylation of the Dazl mRNA was found to be mediated by CPEB1 and require a poly(A) signal.<sup>102</sup> In *Xenopus* oocytes DAZL mediated translational activation appears not to involve cytoplasmic polyadenylation, but it requires an interaction between DAZL and poly(A) binding proteins.<sup>126,127</sup> This interaction is highly conserved throughout the DAZL protein family and across species and cross-rescue experiments indicate that the mechanism of action is also conserved.<sup>210,127</sup> However, DAZL can form a complex with the human Pumilio protein PUM2, so some DAZL functions may be mediated by Pumilo.<sup>128</sup> More evidence is therefore required before DAZL protein can be truly considered a CyPSF. In addition, one publication indicates that another single RRM protein, RBFOX2 (Rbm9, Fox2), associates with PAPD4 in *Xenopus* oocytes and therefore also is a candidate CyPSF in this cell type.<sup>131</sup>

### Cytoplasmic Polyadenylation Mediated by Other Elements in *Xenopus* Embryos

Two more CPEs have been identified by deletion mapping of injected radiolabelled RNAs in *Xenopus*. Both mediate polyadenylation in early embryogenesis and not during oocyte maturation, which explains why they are less studied: good quality embryos are harder to obtain and inject than oocytes. First discovered, at about the same time as the CPE, was a stretch of 12 U residues that was called the eCPE.<sup>106,215,94</sup> Like the CPE, it requires a poly(A) signal to function and the spacing between the eCPE and the poly(A) signal regulates the timing of polyadenylation.<sup>79,106,118</sup> The eCPE can bind ELAVL1 (ElrA, HuR), but whether this is the genuine CyPSF is still uncertain.<sup>119,216</sup>

The second embryonic CPE in *Xenopus* was found to be a stretch of cytidine residues and

called the C-CPE.<sup>105,217</sup> Cytoplasmic polyadenylation by the C-CPE also requires a poly(A) signal and the element is bound by PCBP2 ( $\alpha$ CP2, hnRNP-E2), which is exclusively cytoplasmic in *Xenopus* oocytes.<sup>218</sup> PCBP2 immunoprecipitates with SYMPK, CPSF2, PAPD4, CPEB1, and PABPL1, but not with PARN, in embryos, and oocytes. This indicates that it is indeed part of a cytoplasmic polyadenylation complex that is pre-assembled in an inactive form in the oocyte. As was predicted by the PCBP2 and CPEB1 association, the C-CPE and the CPE cooperate to increase polyadenylation during early embryogenesis.<sup>105</sup>

### Other CPEs and Factors Found in Invertebrates

PAPD4 was originally discovered as germ-line deficient 2 (GLD-2) in *C. elegans*<sup>91</sup> and a number of PAPD4-interacting RNA binding proteins that activate the translation of target mRNAs in different stages of germ line development have been characterized.<sup>82,91,122,219</sup> Although the activity of PAPD4 as a poly(A) polymerase cannot be doubted, it has been much more difficult in this system to prove that cytoplasmic polyadenylation of specific mRNAs actually occurs in the germ cells and to map the sequences required for cytoplasmic polyadenylation on these mRNAs. PAPD4 RNA binding partners in *C. elegans* germ cell development include the Pumilio homologs FBF-1 and FBF-2 (PUM1, PUM2),<sup>122</sup> RNP-8, a single RRM protein with no clear human homologs,<sup>82</sup> and GLD-3, a KH domain protein with similarity to the *Drosophila* deadenylation factor Bicaudal C (BICC1).<sup>220–223</sup> In addition to PAPD4, PAPD5 (GLD-4) has been identified as a cytoplasmic poly(A) polymerase in *C. elegans* and has been shown to promote germ line development with a complex of BICC1 and GLS-1, a protein with no clear human homologs.<sup>123,224</sup> BICC1 is also implicated in male fertility in mice, indicating a conserved function in the germline.<sup>225</sup>

*Drosophila* Toll mRNA is regulated by cytoplasmic polyadenylation during early embryogenesis. Experiments using an *in vitro* polyadenylation system were used to map a 180 nucleotide region of the 3' UTR that is required for this function.<sup>226</sup> Competition with this RNA fragment indicated that the polyadenylation factors binding this region are distinct from those found in CPE containing mRNAs. Remarkably, the canonical nuclear poly(A) signal appears not to be required for the polyadenylation of Toll mRNA, indicating it employs a fundamentally different mechanism of cytoplasmic polyadenylation.<sup>55</sup> The

transacting factors mediating Toll mRNA cytoplasmic polyadenylation have not yet been characterized. Also in *Drosophila*, interactions of PAPD4 and CPEB (Orb) with fragile X mental retardation protein (FMRP) have been reported in neurons and oocytes, but its function appears to be opposite to that of CPEB.<sup>136,137</sup>

## CYTOPLASMIC POLYADENYLATION OF mRNAs IN SOMATIC CELLS

Elongation of the poly(A) tail has long been known to also take place in the cytoplasm of mammalian tissue culture cells, accounting for approximately 10% of all polyadenylation.<sup>227</sup> However, cytoplasmic polyadenylation of specific mRNAs is much harder to study in somatic cells, as the synthesis of new mRNA also can contribute to changes in poly(A) tail size on specific mRNAs. Elongation of the poly(A) tail in a transcriptionally active cell can be due to reduced deadenylation of the poly(A) tail of newly made mRNAs as well as to cytoplasmic polyadenylation. Moreover, if only a relatively small portion of mRNAs in a cell undergoes poly(A) tail changes, for instance those localized under a particular set of synapses, the detection problem is further magnified. Determination of mRNA poly(A) tail sizes in most systems is dependent on techniques that are not very good at detecting rare mRNAs, such as variations on Northern blotting, or on PCR based methods that need to be very carefully controlled to avoid artifacts for a discussion see Ref 50. As a consequence, no new CPEs or specificity factors have so far been firmly identified in somatic cells. Some putative CyPSFs, such as DAZL and ZAR2, are very germ cell specific and unlikely to be of importance in somatic cells, with the possible exception of some tumor cells.<sup>228–230</sup> However, a large body of work indicates that the CPEs and factors that function in germ cells and early embryos also are important in other cell types. It is not always clear, however, if cytoplasmic polyadenylation does indeed play a role in their function. Discussion of all cases where CyPSFs or elements have been implicated in mRNA regulation is outside the scope of this review. We have therefore selected some of the examples of regulation by CPEB, Pumilio, Musashi, PCBP and Bicardal protein families, as these are confirmed or very likely CyPSFs in germ cells and early embryos.

### CPEB Family Proteins and PAPD4 in the Nervous System

In neuronal cells, the local regulation of translation in the dendrites is thought to play a role in the remodeling of synapses required for learning.<sup>83</sup> CPEB1 protein

and polyadenylation factors are present in the cell bodies and dendrites of many neurons and binds to mRNAs that are known to be partially dendritically localized. The CPEs in the 3' UTRs of mRNAs such as calmodulin kinase II (CAMK2A) were found to be required for dendritic mRNA localization, as well as for translational stimulation and elongation of the poly(A) tail after synaptic stimulation.<sup>231–238</sup> The activation of CPEB1 mediated cytoplasmic polyadenylation and translation in dendrites has been attributed to phosphorylation on the same site as in oocyte maturation, and the kinase is thought to be either AURKA or CAMK2A.<sup>232,239–241</sup> As CAMK2A mRNA is also targeted by CPEB1, this is potentially another positive feedback loop, which has been proposed to contribute to the generation of a bistable switch.<sup>242</sup> Another proposed mechanism of regulation of CPEB proteins in neurons is a prion-like conformation change in CPEB variants in *Aplysia* and *Drosophila*, although so far polyadenylation appears not to be involved.<sup>243–246</sup>

The polyadenylation inhibitor cordycepin has been used to show that polyadenylation is required for normal synaptic function.<sup>113,233</sup> However, this type of experiment is no longer valid, because cordycepin is now known to inhibit protein synthesis through effects on the mTOR pathway in some cell types, as well as to have gene-specific effects on de novo mRNA synthesis.<sup>247,248</sup> The most compelling early evidence that the poly(A) tail elongation observed in neuronal cells does not represent newly synthesized mRNAs comes from observation of poly(A) tail elongation *in vitro*, in synapse containing vesicles (synaptoneuroosomes).<sup>232</sup> Moreover, a recent study shows that a rapid increase in poly(A) (detected by *in situ* hybridization) does indeed occur in dendrites in response to NMDA receptor stimulation. The timing of this effect coincides with CPEB1 phosphorylation and PARN dissociation and it is abolished by knockdown of PAPD4 (Gld-2).<sup>241</sup> Because of the speed of the response and the requirement for PAPD4, it is unlikely that this increase in poly(A) is due to the transport of newly made mRNA into the dendrites. This therefore probably represents a true case of cytoplasmic polyadenylation.

PAPD4 (Gld2) mutants in *Drosophila* have defects in long-term memory, which indicates that this enzyme is indeed important in synaptic plasticity.<sup>136</sup> In addition, Orb2, the somatic CPEB in *Drosophila*, is required for asymmetric cell division during neuronal development, for normal locomotion and for memory formation.<sup>249,250</sup> This suggests a major role for cytoplasmic polyadenylation in the *Drosophila* nervous system. CPEB1 has also been implicated

in axon branching in hippocampal neurons, in cell migration of astrocytes and in motor skill development in rodents using expression of a CPEB1 dominant negative mutant.<sup>251–253</sup> The Pumilio proteins, which can cooperate with CPEB1 in oocytes, have also been implicated in neuronal development and synaptic plasticity.<sup>254–260</sup> However, *CPEB1* knockout mice have no major nervous system defects, although subtle effects on synaptic transmission and memory have been reported.<sup>261,262</sup> This may be because other members of the CPEB family also are expressed in mammalian neurons.<sup>113,263</sup> In particular, CPEB3 mediated translational control has been linked to changes in synapse function in rodents<sup>264,265</sup> and a polymorphism in the *CPEB3* gene has been linked to memory in humans as well.<sup>266</sup> An increase in poly(A) tail of a CPEB3 targeted mRNA has indeed been reported.<sup>264</sup> In contrast to the regulation observed in oocytes, however, activation of translation is thought to be mediated by mono-ubiquitination or calpain mediated degradation.<sup>264,265</sup> In addition, the activation of CPEB3 bound mRNAs does not require a poly(A) signal or CPSF.<sup>113</sup> Similarly to the situation for CPEB1 in oocytes, CPEB3 is an efficient translational repressor<sup>264,265</sup> and CPEB3 (and CPEB4) can associate with the TOB2 protein, which mediates deadenylation through recruitment of the CNOT deadenylation complex.<sup>267</sup> The data so far are therefore inconclusive in determining if CPEB3 works as a deadenylation factor that is inactivated or as a CyPSF that is activated during synaptic stimulation in neurons.

### CPEB Family Proteins in the Regulation of Cell Proliferation

CPEB proteins have also been implicated in the regulation of mitosis, senescence and tumorigenesis, this has been recently reviewed in depth,<sup>151</sup> with only one additional publication to note.<sup>171</sup> In most cases where cytoplasmic polyadenylation has been implicated, clear effects of CPEB proteins on translational efficiency were detected. However, actual cytoplasmic polyadenylation in somatic cells other than neurons has not been definitively demonstrated. One approach has been to inject RNA into *Xenopus* oocytes to show that the 3' UTR can mediate cytoplasmic polyadenylation.<sup>170,231</sup> Unfortunately, this is no definitive guarantee that translational or poly(A) tail changes are caused by cytoplasmic polyadenylation in the tissue of interest. Another study shows a suggestive correlation between phosphorylation of CPEB1 and poly(A) tail elongation.<sup>268</sup> Only two articles come close to demonstrating that CPEB mediated

cytoplasmic polyadenylation genuinely plays a role, one in mitosis and one in senescence,<sup>145,112</sup> these are discussed below.

In early embryos, cell division is atypical, with an absence of the G1 and G2 phases, so the finding that CPEB1 activates translation by cytoplasmic polyadenylation during mitosis in the embryonic cell cycle<sup>85,269,270</sup> did not have immediate implications for the normal somatic cell cycle. However, most mRNAs regulated by cytoplasmic polyadenylation in oocytes encode proteins that are also involved in normal mitosis.<sup>151</sup> In addition, mRNA transcription is known to be reduced in G2 and blocked in M phase in HeLa cells,<sup>271</sup> similar to the situation in oocytes. In the first systematic screen for differentially polyadenylated mRNAs in mammalian cells, Novoa *et al.*<sup>112</sup> compared the poly(A) tail sizes of mRNAs in HeLa cells in the S and G2/M phases. Total poly(A) RNA was isolated using oligo(dT) chromatography and RNA with short poly(A) tails was isolated by low stringency elution of poly(U) chromatography. Hundreds of mRNAs displayed cell cycle dependent changes in the ratios between the total and short poly(A) tail fractions, indicating that poly(A) tail regulation is widespread during the cell cycle. Knockdown of CPEB1 and CPEB4 caused cell cycle defects and affected the polyadenylation of some, but not all of these mRNAs during G2/M. These data indicate that both CPE dependent and other types of cytoplasmic polyadenylation are occurring during the G2/M phase of the cell cycle in HeLa cells.

In primary fibroblasts, knockdown or knockout of CPEB1 prevents senescence, a process that halts cell proliferation in normal cells after a finite number of cell divisions.<sup>272,273</sup> The translational activation of the tumor suppressor TP53 (p53), a factor required for senescence, is dependent on CPEB1 and TP53 mRNA has a short poly(A) tail in human fibroblasts with reduced CPEB1.<sup>272</sup> Surprisingly, the knockdown of the PAPD4 (Gld2) poly(A) polymerase increased TP53 translation, an effect that was attributed to the role of PAPD4 in the maturation of a microRNA that targets CPEB1 mRNA in these cells, leading to increased CPEB1 levels.<sup>145</sup> Knockdown of the PAPD5 (Gld4) poly(A) polymerase did reduce TP53 protein expression and TP53 mRNA polyadenylation, and PAPD5 was found associated with CPEB1 and the TP53 mRNA.<sup>272</sup> These data indicate that TP53 mRNA is regulated by polyadenylation mediated by CPEB1 and PAPD5 during the senescence of human fibroblasts. However, since both CPEB proteins and PAPD5 can also be found in the nucleus in somatic cells<sup>274–277</sup> and transcription is ongoing in these experiments, an effect on nuclear polyadenylation cannot be excluded.

## Other Roles of CyPSFs in Somatic Cells

An exciting recent study demonstrated widespread regulation of poly(A) tail size during the circadian rhythm in the liver, some of which appears to be linked to transcriptional up regulation and some of which are not linked to transcriptional increases.<sup>278</sup> The poly(A) tail sizes of some of the mRNAs in the last class are regulated by CPEB1 and CPEB2. Less well characterized and new polyadenylation regulatory elements are likely to be involved in the regulation of the other mRNAs identified in this study.

Musashi (MSI1 and MSI2) was initially characterized as a factor that promoted the self-renewal of neural stem cells by translationally repressing *numb*, an inhibitor of Notch signaling.<sup>279</sup> More recently, MSI has been implicated as a marker for a variety of stem cells including mammary cells,<sup>280</sup> normal and malignant gastrointestinal cells,<sup>281,282</sup> endometrial stem cells,<sup>283</sup> and in normal and malignant hematopoiesis.<sup>284</sup> The mechanism of translational repression by mammalian MSI in somatic cells is proposed to be the disruption of the closed loop translation initiation complex due to an interaction of MSI1 with PABP.<sup>285</sup>

The Pumilio family (PUM1 and PUM2) proteins are highly conserved in eukaryotes and well characterized as deadenylation factors and translational repressors in many cell types.<sup>286</sup> In addition to their functions in neurons (see above), Pumilio proteins have been implicated in the regulation of MAPK signaling and cell proliferation.<sup>287–289</sup> There is so far no evidence that these factors can mediate cytoplasmic polyadenylation in somatic cells, whether on their own or in conjunction with CPEB proteins.

The Bicaudal C homolog *BICC1* is linked to polycystic kidney disease in zebrafish, *Xenopus*, mouse and human,<sup>290–292</sup> this is caused by defects in epithelial morphogenesis.<sup>292–295</sup> CPEB1 deficiency also causes epithelial defects in the breast tissue of mice.<sup>296</sup> These observations complement the long established localization of the polyadenylation factor SYMPK at tight junctions,<sup>297,298</sup> and suggest a potential function for local translation mediated by cytoplasmic polyadenylation in the morphogenesis of epithelia. *BICC1* appears to be a KH domain RNA binding protein, but a consensus binding element in RNA has so far not been identified.<sup>222,299</sup> It has been reported to both to enhance and counteract microRNA mediated repression.<sup>300,301</sup> No data are available on the effects of *BICC1* on mRNA polyadenylation in somatic cells.

Both PCBP2 ( $\alpha$ CP2) and ELAVL 1 (HuR) are best known as proteins that mediate mRNA stabilization in somatic cells,<sup>302,303</sup> but there is so

far no evidence that this role involves cytoplasmic polyadenylation. PCBP2 and its closely related family member, PCBP1 (hnRNP-E1), have been shown to mediate translational repression in haematopoietic cells.<sup>304,305</sup> Strikingly, the C-CPE that can promote cytoplasmic polyadenylation in *Xenopus* embryos<sup>105</sup> and mRNA stabilization in the cytoplasm of somatic cells also mediates gene-specific increased splicing, cleavage and polyadenylation of pre-mRNA in the nucleus.<sup>306</sup> In addition, PCBP2 stimulated polyadenylation and was found to associate with three CPSF subunits and SYMPK in nuclear extracts. This observation opens the possibility that other cytoplasmic polyadenylation sequences and factors also can influence nuclear polyadenylation, and conversely, that proteins that bind upstream polyadenylation elements in the nucleus may also have a function in cytoplasmic polyadenylation. In this context it is remarkable that a subunit of the USE binding factor CFI<sub>m</sub> (NUDT21) has been found together with PCBP1 in a vinculin bound cytoplasmic RNP complex during cell adhesion.<sup>307</sup> Moreover, the NUDT21 recognition site is included in the Pumilio binding element, opening the possibility of competitive or subsequent binding.<sup>120,308</sup> Interestingly, gene specific increases in splicing and nuclear 3' mRNA processing have been shown to play a major role in the regulation of cyclin expression during meiosis in yeast,<sup>309</sup> and regulation of nuclear polyadenylation by USEs may therefore be the ancestral mechanism that evolved into cytoplasmic polyadenylation in animal germ cells.

## CONCLUSIONS

Cytoplasmic polyadenylation was first characterized in *Xenopus* oocytes, and all well characterized examples of regulatory sequences are still from this system, with the best established specificity factors being CPEB1, CPEB4, MSI1, and PCBP2. However, a role for cytoplasmic polyadenylation is also emerging in the *C. elegans* germ line, as well as in neuronal plasticity and mitosis in somatic cells. While conclusive evidence of cytoplasmic polyadenylation still is dependent on showing that poly(A) tail elongation is independent of transcription, good circumstantial cases can be made where mRNA activation can be linked to the physical and functional association of an RNA binding protein in complex with one or more poly(A) polymerases, such as has been shown for BicaudalC and Pumilio in *C. elegans*. However, due caution must be exercised when assigning cytoplasmic mRNA associated functions to poly(A) polymerases, as most are present in the

nucleus as well and these enzymes are also involved in the processing and degradation of noncoding RNAs.<sup>274,310–312</sup> Increasingly, complexes of multiple RNA binding proteins are implicated in the mRNA specificity as well as the timing of cytoplasmic polyadenylation. The best characterized is the CPEB-Pumilio interaction, but now there are also the CPEB1-PCBP2 and Pumilio-DAZL interactions and many mRNAs that are regulated by cytoplasmic polyadenylation in oocytes have binding sites for

multiple factors. This indicates that cooperation and/or antagonism of different poly(A) regulatory factors is common. Cytoplasmic polyadenylation now appears to be a widespread phenomenon, and is increasingly attracting the interest of researchers working in systems other than *Xenopus* and *C. elegans* oogenesis and early development. Therefore, we can expect new specificity factors to emerge in the near future.

## ACKNOWLEDGMENTS

Nicola Gray (Edinburgh) and Claudia Bagni (Leuven) are thanked for prompt answers to specific queries. Any remaining errors are entirely our own.

## REFERENCES

1. Proudfoot NJ. Ending the message: poly(A) signals then and now. *Genes Dev* 2011, 25:1770–1782.
2. Nagaike T, Manley JL. Transcriptional activators enhance polyadenylation of mRNA precursors. *RNA Biol* 2011, 8:964–967.
3. Martinson HG. An active role for splicing in 3'-end formation. *Wiley Interdiscip Rev RNA* 2011, 2:459–470.
4. Kuehner JN, Pearson EL, Moore C. Unravelling the means to an end: RNA polymerase II transcription termination. *Nat Rev Mol Cell Biol* 2011, 12:283–294.
5. Tian B, Graber JH. Signals for pre-mRNA cleavage and polyadenylation. *Wiley Interdiscip Rev RNA* 2011, 3:385–396.
6. Yang Q, Doublet S. Structural biology of poly(A) site definition. *Wiley Interdiscip Rev RNA* 2011, 2:732–747.
7. Millevoi S, Vagner S. Molecular mechanisms of eukaryotic pre-mRNA 3' end processing regulation. *Nucleic Acids Res* 2009, 38:2757–2774.
8. Chan S, Choi EA, Shi Y. Pre-mRNA 3'-end processing complex assembly and function. *Wiley Interdiscip Rev RNA* 2011, 2:321–335.
9. Mandel CR, Kaneko S, Zhang H, Gebauer D, Vethantham V, Manley JL, Tong L. Polyadenylation factor CPSF-73 is the pre-mRNA 3'-end-processing endonuclease. *Nature* 2006, 444:953–956.
10. Kaufmann I, Martin G, Friedlein A, Langen H, Keller W. Human Fip1 is a subunit of CPSF that binds to U-rich RNA elements and stimulates poly(A) polymerase. *EMBO J* 2004, 23:616–626.
11. Preker PJ, Lingner J, Minvielle-Sebastia L, Keller W. The FIP1 gene encodes a component of a yeast pre-mRNA polyadenylation factor that directly interacts with poly(A) polymerase. *Cell* 1995, 81:379–389.
12. Takagaki Y, Manley JL. Complex protein interactions within the human polyadenylation machinery identify a novel component. *Mol Cell Biol* 2000, 20:1515–1525.
13. Kolev NG, Yario TA, Benson E, Steitz JA. Conserved motifs in both CPSF73 and CPSF100 are required to assemble the active endonuclease for histone mRNA 3'-end maturation. *EMBO Rep* 2008, 9:1013–1018.
14. Yang Q, Gilmartin GM, Doublet S. The structure of human cleavage factor Im hints at functions beyond UGUA-specific RNA binding: A role in alternative polyadenylation and a potential link to 5' capping and splicing. *RNA Biol* 2011, 8:748–753.
15. Lutz CS, Moreira A. Alternative mRNA polyadenylation in eukaryotes: an effective regulator of gene expression. *Wiley Interdiscip Rev RNA* 2011, 2:22–31.
16. Di Giammartino DC, Nishida K, Manley JL. Mechanisms and consequences of alternative polyadenylation. *Mol Cell* 2011, 43:853–866.
17. Dettwiler S, Aringhieri C, Cardinale S, Keller W, Barabino SM. Distinct sequence motifs within the 68-kDa subunit of cleavage factor Im mediate RNA binding, protein-protein interactions, and subcellular localization. *J Biol Chem* 2004, 279:35788–35797.
18. Kuhn U, Gundel M, Knoth A, Kerwitz Y, Rudel S, Wahle E. Poly(A) tail length is controlled by the nuclear poly(A)-binding protein regulating the interaction between poly(A) polymerase and the cleavage and polyadenylation specificity factor. *J Biol Chem* 2009, 284:22803–22814.

19. Kerwitz Y, Kuhn U, Lilie H, Knoth A, Scheuermann T, Friedrich H, Schwarz E, Wahle E. Stimulation of poly(A) polymerase through a direct interaction with the nuclear poly(A) binding protein allosterically regulated by RNA. *EMBO J* 2003, 22:3705–3714.
20. Bardwell VJ, Zarkower D, Edmonds M, Wickens M. The enzyme that adds poly(A) to mRNAs is a classical poly(A) polymerase. *Mol Cell Biol* 1990, 10:846–849.
21. Topalian SL, Kaneko S, Gonzales MI, Bond GL, Ward Y, Manley JL. Identification and functional characterization of neo-poly(A) polymerase, an RNA processing enzyme overexpressed in human tumors. *Mol Cell Biol* 2001, 21:5614–5623.
22. Shi Y, Di Giannardino DC, Taylor D, Sarkeshik A, Rice WJ, Yates JR III, Frank J, Manley JL. Molecular architecture of the human pre-mRNA 3' processing complex. *Mol Cell* 2009, 33:365–376.
23. Gonzales ML, Mellman DL, Anderson RA. CKI $\alpha$  is associated with and phosphorylates star-PAP and is also required for expression of select star-PAP target messenger RNAs. *J Biol Chem* 2008, 283:12665–12673.
24. Laishram RS, Barlow CA, Anderson RA. CKI isoforms  $\{\alpha\}$  and  $\{\text{varepsilon}\}$  regulate Star-PAP target messages by controlling Star-PAP poly(A) polymerase activity and phosphoinositide stimulation. *Nucleic Acids Res* 2011, 39:7961–7973.
25. Laishram RS, Anderson RA. The poly A polymerase Star-PAP controls 3'-end cleavage by promoting CPSF interaction and specificity toward the pre-mRNA. *EMBO J* 2010, 29:4132–4145.
26. Li W, Laishram RS, Ji Z, Barlow CA, Tian B, Anderson RA. Star-PAP control of BIK expression and apoptosis is regulated by nuclear PIPKI $\alpha$  and PKC $\delta$  signaling. *Mol Cell* 2012, 45:25–37.
27. Mellman DL, Anderson RA. A novel gene expression pathway regulated by nuclear phosphoinositides. *Adv Enzyme Regul* 2009, 49:11–28.
28. Mellman DL, Gonzales ML, Song C, Barlow CA, Wang P, Kendzioriski C, Anderson RA. A PtdIns4,5P2-regulated nuclear poly(A) polymerase controls expression of select mRNAs. *Nature* 2008, 451:1013–1017.
29. Soucek S, Corbett AH, Fasken MB. The long and the short of it: The role of the zinc finger polyadenosine RNA binding protein, Nab2, in control of poly(A) tail length. *Biochim Biophys Acta* 1819, 2012: 546–554.
30. Sagawa F, Ibrahim H, Morrison AL, Wilusz CJ, Wilusz J. Nucleophosmin deposition during mRNA 3' end processing influences poly(A) tail length. *EMBO J* 2011, 30:3994–4005.
31. Kuehn U, Guendel M, Knoth A, Kerwitz Y, Ruedel S, Wahle E. Poly(A) tail length is controlled by the nuclear poly(A) binding protein regulating the interaction between poly(A) polymerase and the cleavage and polyadenylation specificity factor. *J Biol Chem* 2009, 284:22803–22814.
32. Johnson SA, Kim H, Erickson B, Bentley DL. The export factor Yra1 modulates mRNA 3' end processing. *Nat Struct Mol Biol* 2011, 18:1164–1171.
33. Qu X, Lykke-Andersen S, Nasser T, Saguez C, Bertrand E, Jensen TH, Moore C. Assembly of an export-competent mRNP is needed for efficient release of the 3' end processing complex after polyadenylation. *Mol Cell Biol* 2009, 29:5327–5338.
34. Brook M, Gray NK. The role of mammalian poly(A)-binding proteins in co-ordinating mRNA turnover. *Biochem Soc Trans* 2012, 40:856–864.
35. Burgess HM, Gray NK. mRNA-specific regulation of translation by poly(A)-binding proteins. *Biochem Soc Trans* 2010, 38:1517–1522.
36. Burgess HM, Gray NK. An integrated model for the nucleo-cytoplasmic transport of cytoplasmic poly(A)-binding proteins. *Commun Integr Biol* 2012, 5:243–247.
37. Afonina E, Stauber R, Pavlakis GN. The human poly(A)-binding protein 1 shuttles between the nucleus and the cytoplasm. *J Biol Chem* 1998, 273: 13015–13021.
38. Hosoda N, Lejeune F, Maquat LE. Evidence that poly(A) binding protein C1 binds nuclear pre-mRNA poly(A) tails. *Mol Cell Biol* 2006, 26:3085–3097.
39. Craig AWB, Haghghat A, Yu AT, Sonenberg N. Interaction of polyadenylate-binding protein with the eIF4G homologue PAIP enhances translation. *Nature* 1998, 392:520–523.
40. Derry MC, Yanagiya A, Martineau Y, Sonenberg N. Regulation of poly(A)-binding protein through PABP-interacting proteins. *Cold Spring Harb Symp Quant Biol* 2006, 71:537–543.
41. Martineau Y, Derry MC, Wang X, Yanagiya A, Berlanga JJ, Shyu AB, Imataka H, Gehring K, Sonenberg N. Poly(A)-binding protein-interacting protein 1 binds to eukaryotic translation initiation factor 3 to stimulate translation. *Mol Cell Biol* 2008, 28:6658–6667.
42. Cheng S, Gallie DR. Wheat eukaryotic initiation factor 4B organizes assembly of RNA and eIF5o4G, eIF4A, and poly(A)-binding protein. *J Biol Chem* 2006, 281:24351–24364.
43. Cheng S, Gallie DR. eIF4G, eIF5o4G, and eIF4B bind the poly(A)-binding protein through overlapping sites within the RNA recognition motif domains. *J Biol Chem* 2007, 282:25247–25258.
44. Bushell M, Wood W, Carpenter G, Pain VM, Morley SJ, Clemens MJ. Disruption of the interaction of mammalian protein synthesis initiation factor 4B with the poly(A) binding protein by caspase- and viral protease-mediated cleavages. *J Biol Chem* 2001, 276:23922–23928.

45. Wu X, Brewer G. The regulation of mRNA stability in mammalian cells: 2.0. *Gene* 2012, 500:10–21.
46. Schoenberg DR, Maquat LE. Regulation of cytoplasmic mRNA decay. *Nat Rev Genet* 2012, 13:246–259.
47. Balagopal V, Fluch L, Nissan T. Ways and means of eukaryotic mRNA decay. *Biochim Biophys Acta* 1819, 2012:593–603.
48. Masuda A, Andersen HS, Doktor TK, Okamoto T, Ito M, Andresen BS, Ohno K. CUGBP1 and MBNL1 preferentially bind to 3' UTRs and facilitate mRNA decay. *Sci Rep* 2012, 2:209(Epub ahead of print, January 4, 2012).
49. Dasgupta T, Ladd AN. The importance of CELF control: molecular and biological roles of the CUGBP, Elav-like family of RNA-binding proteins. *Wiley Interdiscip Rev RNA* 2012, 3:104–121.
50. Meijer HA, Bushell M, Hill K, Gant TW, Willis AE, Jones P, De Moor CH. A novel method for poly(A) fractionation reveals a large population of mRNAs with a short poly(A) tail in mammalian cells. *Nucleic Acids Res* 2007, 35:e132.
51. Peng SS, Chen CY, Xu N, Shyu AB. RNA stabilization by the AU-rich element binding protein, HuR, an ELAV protein. *EMBO J* 1998, 17:3461–3470.
52. Fan XC, Steitz JA. Overexpression of HuR, a nuclear-cytoplasmic shuttling protein, increases the in vivo stability of ARE-containing mRNAs. *EMBO J* 1998, 17:3448–3460.
53. Mukherjee N, Corcoran DL, Nusbaum JD, Reid DW, Georgiev S, Hafner M, Ascano M Jr, Tuschl T, Ohler U, Keene JD. Integrative regulatory mapping indicates that the RNA-binding protein HuR couples pre-mRNA processing and mRNA stability. *Mol Cell* 2011, 43:327–339.
54. Weill L, Belloc E, Bava FA, Mendez R. Translational control by changes in poly(A) tail length: recycling mRNAs. *Nat Struct Mol Biol* 2012, 19:577–585.
55. Villalba A, Coll O, Gebauer F. Cytoplasmic polyadenylation and translational control. *Curr Opin Genet Dev* 2011, 21:452–457.
56. De Moor CH, Richter JD. Cytoplasmic polyadenylation elements mediate masking and unmasking of cyclin B1 mRNA. *EMBO J* 1999, 18:2294–2303.
57. Huarte J, Stutz A, O'Connell ML, Gubler P, Belin D, Darrow AL, Strickland S, Vassalli JD. Transient translational silencing by reversible mRNA deadenylation. *Cell* 1992, 69:1021–1030.
58. Charlesworth A, Welk J, MacNicol AM. The temporal control of Wee1 mRNA translation during *Xenopus* oocyte maturation is regulated by cytoplasmic polyadenylation elements within the 3'-untranslated region. *Dev Biol* 2000, 227:706–719.
59. Wang YY, Charlesworth A, Byrd SM, Gregerson R, MacNicol MC, MacNicol AM. A novel mRNA 3' untranslated region translational control sequence regulates *Xenopus* Wee1 mRNA translation. *Dev Biol* 2008, 317:454–466.
60. Belloc E, Mendez R. A deadenylation negative feedback mechanism governs meiotic metaphase arrest. *Nature* 2008, 452:1017–1021.
61. Nakahata S, Katsu Y, Mita K, Inoue K, Nagahama Y, Yamashita M. Biochemical identification of *Xenopus* Pumilio as a sequence-specific Cyclin B1 mRNA-binding protein that physically interacts with a Nanos homolog (Xcat-2) and a cytoplasmic polyadenylation element-binding Protein (CPEB). *J Biol Chem* 2001, 276:20945–20953.
62. Meijer HA, Radford HE, Wilson LS, Lissenden S, De Moor CH. Translational control of maskin mRNA by its 3' untranslated region. *Biol Cell* 2007, 99:239–250.
63. Charlesworth A, Yamamoto TM, Cook JM, Silva KD, Kotter CV, Carter GS, Holt JW, Lavender HF, MacNicol AM, Ying WY, et al. *Xenopus laevis* zygote arrest 2 (zar2) encodes a zinc finger RNA-binding protein that binds to the translational control sequence in the maternal Wee1 mRNA and regulates translation. *Dev Biol* 2012, 369:177–190.
64. Cao Q, Padmanabhan K, Richter JD. Pumilio 2 controls translation by competing with eIF4E for 7-methyl guanosine cap recognition. *RNA* 2010, 16:221–227.
65. Teplova M, Song J, Gaw HY, Teplov A, Patel DJ. Structural insights into RNA recognition by the alternate-splicing regulator CUG-binding protein 1. *Structure* 2010, 18:1364–1377.
66. Edwards J, Malaurie E, Kondrashov A, Long J, De Moor CH, Searle MS, Emsley J. Sequence determinants for the tandem recognition of UGU and CUG rich RNA elements by the two N terminal RRM of CELF1. *Nucleic Acids Res* 2011, 39:8638–8650.
67. Rattenbacher B, Beisang D, Wiesner DL, Jeschke JC, von HM, St Louis-Vlasova IA, Bohjanen PR. Analysis of CUGBP1 targets identifies GU-repeat sequences that mediate rapid mRNA decay. *Mol Cell Biol* 2010, 30:3970–3980.
68. Paillard L, Omilli F, Legagneux V, Bassez T, Maniey D, Osborne HB. EDEN and EDEN-BP, a cis element and an associated factor that mediate sequence-specific mRNA deadenylation in *Xenopus* embryos. *EMBO J* 1998, 17:278–287.
69. Moretti F, Kaiser C, Zdanowicz-Specht A, Hentze MW. PABP and the poly(A) tail augment microRNA repression by facilitated miRISC binding. *Nat Struct Mol Biol* 2012, 19:603–608.
70. Radford HE, Meijer HA, De Moor CH. Translational control by cytoplasmic polyadenylation in *Xenopus* oocytes. *Biochim Biophys Acta* 2008, 1779:217–229.
71. Chen PJ, Huang YS. CPEB2-eEF2 interaction impedes HIF-1 $\alpha$  RNA translation. *EMBO J* 2011, 31:959–971.

72. Cooke A, Prigge A, Wickens M. Translational repression by deadenylases. *J Biol Chem* 2010, 285:28506–28513.
73. Djuranovic S, Nahvi A, Green R. miRNA-mediated gene silencing by translational repression followed by mRNA deadenylation and decay. *Science* 2012, 336:237–240.
74. Bethune J, Artus-Revel CG, Filipowicz W. Kinetic analysis reveals successive steps leading to miRNA-mediated silencing in mammalian cells. *EMBO Rep* 2012, 13:716–723.
75. Fabian MR, Mathonnet G, Sundermeier T, Mathys H, Zipprich JT, Svitkin YV, Rivas F, Jinek M, Wohlschlegel J, Doudna JA, *et al.* Mammalian miRNA RISC recruits CAF1 and PABP to affect PABP-dependent deadenylation. *Mol Cell* 2009, 35:868–880.
76. Bazzini AA, Lee MT, Giraldez AJ. Ribosome profiling shows that miR-430 reduces translation before causing mRNA decay in Zebrafish. *Science* 2012, 336:233–237.
77. Meijer HA, Kong YW, Lu WT, Wilczynska A, Spriggs RV, Robinson SW, Godfrey JD, Willis AE, Bushell M. Translational repression and eIF4A2 activity are critical for microRNA-mediated gene regulation. *Science* 2013, 340:82–85.
78. McGrew LL, Dworkin-Rastl E, Dworkin MB, Richter JD. Poly (A) elongation during *Xenopus* oocyte maturation is required for translational recruitment and is mediated by a short sequence element. *Genes Dev* 1989, 3:803–815.
79. Simon R, Richter JD. Further analysis of cytoplasmic polyadenylation in *Xenopus* embryos and identification of embryonic cytoplasmic polyadenylation element-binding proteins. *Mol Cell Biol* 1994, 14:7867–7875.
80. Barkoff A, Ballantyne S, Wickens M. Meiotic maturation in *Xenopus* requires polyadenylation of multiple mRNAs. *EMBO J* 1998, 17:3168–3175.
81. Takeda Y, Mishima Y, Fujiwara T, Sakamoto H, Inoue K. DAZL relieves miRNA-mediated repression of germline mRNAs by controlling poly(A) tail length in zebrafish. *PLoS One* 2009, 4:e7513.
82. Kim KW, Wilson TL, Kimble J. GLD-2/RNP-8 cytoplasmic poly(A) polymerase is a broad-spectrum regulator of the oogenesis program. *Proc Natl Acad Sci USA* 2010, 107:17445–17450.
83. Darnell JC, Richter JD. Cytoplasmic RNA-binding proteins and the control of complex brain function. *Cold Spring Harb Perspect Biol* 2012, 4:a012344.
84. Elisavich C, Peset I, Vernos I, Mendez R. Spindle-localized CPE-mediated translation controls meiotic chromosome segregation. *Nat Cell Biol* 2008, 10: 858–865.
85. Groisman I, Huang YS, Mendez R, Cao Q, Theurkauf W, Richter JD. CPEB, maskin, and cyclin B1 mRNA at the mitotic apparatus: implications for local translational control of cell division. *Cell* 2000, 103:435–447.
86. Sallés FJ, Lieberfarb ME, Wreden C, Ger-gen JP, Strickland S. Coordinate initiation of *Drosophila* development by regulated polyadenylation of maternal messenger RNAs. *Science* 1994, 266: 1996–1999.
87. Martin KC, Ephrussi A. mRNA localization: gene expression in the spatial dimension. *Cell* 2009, 136:719–730.
88. Wilt FH. Polyadenylation of maternal RNA of sea urchin eggs after fertilization. *Proc Natl Acad Sci USA* 1973, 70:2345–2349.
89. Fox CA, Sheets MD, Wickens MP. Poly(A) addition during maturation of frog oocytes: distinct nuclear and cytoplasmic activities and regulation by the sequence UUUUUU. *Genes Dev* 1989, 3:2151–2162.
90. Standart N, Dale M. Regulated polyadenylation of clam maternal mRNAs in vitro. *Dev Genet* 1993, 14:492–499.
91. Wang L, Eckmann CR, Kadyk LC, Wickens M, Kimble J. A regulatory cytoplasmic poly(A) polymerase in *Caenorhabditis elegans*. *Nature* 2002, 419:312–316.
92. Vassalli J-D, Huarte J, Belin D, Gubler P, Vassalli A, O'Connell ML, Parton LA, Rickles RJ, Strickland S. Regulated polyadenylation controls mRNA translation during meiotic maturation of mouse oocytes. *Genes Dev* 1989, 3:2163–2171.
93. Suzuki H, Tsukahara T, Inoue K. Localization of c-mos mRNA around the animal pole in the zebrafish oocyte with Zor-1/Zorba. *Biosci Trends* 2009, 3:96–104.
94. Paris J, Osborne HB, Couturier A, Le Guellec R, Philippe M. Changes in the polyadenylation of specific stable RNA during the early development of *Xenopus laevis*. *Gene* 1988, 72:169–176.
95. Barnard DC, Ryan K, Manley JL, Richter JD. Symplekin and xGLD-2 are required for CPEB-mediated cytoplasmic polyadenylation. *Cell* 2004, 119:641–651.
96. Hake LE, Richter JD. CPEB is a specificity factor that mediates cytoplasmic polyadenylation during *Xenopus* oocyte maturation. *Cell* 1994, 79:617–627.
97. Ballantyne S, Daniel DL Jr, Wickens M. A dependent pathway of cytoplasmic polyadenylation reactions linked to cell cycle control by c-mos and CDK1 activation. *Mol Biol Cell* 1997, 8:1633–1648.
98. Barkoff AF, Dickson KS, Gray NK, Wickens M. Translational control of cyclin B1 mRNA during meiotic maturation: coordinated repression and cytoplasmic polyadenylation. *Dev Biol* 2000, 220:97–109.
99. Pique M, Lopez JM, Foissac S, Guigo R, Mendez R. A combinatorial code for CPE-mediated translational control. *Cell* 2008, 132:434–448.



100. Igea A, Mendez R. Meiosis requires a translational positive loop where CPEB1 ensues its replacement by CPEB4. *EMBO J* 2010, 29:2182–2193.
101. Mendez R, Barnard D, Richter JD. Differential mRNA translation and meiotic progression require Cdc2-mediated CPEB destruction. *EMBO J* 2002, 21:1833–1844.
102. Chen J, Melton C, Suh N, Oh JS, Horner K, Xie F, Sette C, Belloch R, Conti M. Genome-wide analysis of translation reveals a critical role for deleted in azoospermia-like (*Dazl*) at the oocyte-to-zygote transition. *Genes Dev* 2011, 25:755–766.
103. Charlesworth A, Wilczynska A, Thampi P, Cox LL, MacNicol AM. Musashi regulates the temporal order of mRNA translation during *Xenopus* oocyte maturation. *EMBO J* 2006, 25:2792–2801.
104. McGrew LL, Richter JD. Translational control by cytoplasmic polyadenylation during *Xenopus* oocyte maturation: Characterization of *cis* and *trans* elements and regulation by cyclin/MPF. *EMBO J* 1990, 9:3743–3751.
105. Vishnu MR, Sumaroka M, Klein PS, Liebhaber SA. The poly(rC)-binding protein  $\alpha$ CP2 is a noncanonical factor in *X. laevis* cytoplasmic polyadenylation. *RNA* 2011, 17:944–956.
106. Simon R, Tassan J-P, Richter JD. Translational control by poly(A) elongation during *Xenopus* development: differential repression and enhancement by a novel cytoplasmic polyadenylation element. *Genes Dev* 1992, 6:2580–2591.
107. Paris J, Richter JD. Maturation-specific polyadenylation and translational control: diversity of cytoplasmic polyadenylation elements, influence of poly(A) tail size, and formation of stable polyadenylation complexes. *Mol Cell Biol* 1990, 10:5634–5645.
108. Sheets MD, Fox CA, Hunt T, Vande Woude G, Wickens M. The 3'-untranslated regions of *c-mos* and cyclin mRNAs stimulate translation by regulating cytoplasmic polyadenylation. *Genes Dev* 1994, 8:926–938.
109. Tay J, Hodgman R, Richter JD. The control of cyclin B1 mRNA translation during mouse oocyte maturation. *Dev Biol* 2000, 221:1–9.
110. Oruganty-Das A, Ng T, Udagawa T, Goh EL, Richter JD. Translational control of mitochondrial energy production mediates neuron morphogenesis. *Cell Metab* 2012, 16:789–800.
111. Mendez R, Hake LE, Andresson T, Littlepage LE, Ruderman JV, Richter JD. Phosphorylation of CPE binding factor by Eg2 regulates translation of *c-mos* mRNA. *Nature* 2000, 404:302–307.
112. Novoa I, Gallego J, Ferreira PG, Mendez R. Mitotic cell-cycle progression is regulated by CPEB1 and CPEB4-dependent translational control. *Nat Cell Biol* 2010.
113. Huang YS, Kan MC, Lin CL, Richter JD. CPEB3 and CPEB4 in neurons: analysis of RNA-binding specificity and translational control of AMPA receptor GluR2 mRNA. *EMBO J* 2006, 25:4865–4876.
114. Imai T, Tokunaga A, Yoshida T, Hashimoto M, Mikoshiba K, Weinmaster G, Nakafuku M, Okano H. The neural RNA-binding protein Musashi1 translationally regulates mammalian *numb* gene expression by interacting with its mRNA. *Mol Cell Biol* 2001, 21:3888–3900.
115. Charlesworth A, Ridge JA, King LA, MacNicol MC, MacNicol AM. A novel regulatory element determines the timing of *Mos* mRNA translation during *Xenopus* oocyte maturation. *EMBO J* 2002, 21:2798–2806.
116. Arumugam K, Wang Y, Hardy LL, MacNicol MC, MacNicol AM. Enforcing temporal control of maternal mRNA translation during oocyte cell-cycle progression. *EMBO J* 2009, 29:387–397.
117. Charlesworth A, Cox LL, MacNicol AM. Cytoplasmic polyadenylation element (CPE)- and CPE-binding protein (CPEB)-independent mechanisms regulate early class maternal mRNA translational activation in *Xenopus* oocytes. *J Biol Chem* 2004, 279:17650–17659.
118. Simon R, Wu L, Richter JD. Cytoplasmic polyadenylation of activin receptor mRNA and the control of pattern formation in *Xenopus* development. *Dev Biol* 1996, 179:239–250.
119. Wu L, Good PJ, Richter JD. The 36-kilodalton embryonic-type cytoplasmic polyadenylation element-binding protein in *Xenopus laevis* is ElrA, a member of the ELAV family of RNA-binding proteins. *Mol Cell Biol* 1997, 17:6402–6409.
120. Campbell ZT, Bhimsaria D, Valley CT, Rodriguez-Martinez JA, Menichelli E, Williamson JR, Ansari AZ, Wickens M. Cooperativity in RNA-protein interactions: global analysis of RNA binding specificity. *Cell Rep* 2012, 1:570–581.
121. Campbell ZT, Menichelli E, Friend K, Wu J, Kimble J, Williamson JR, Wickens M. Identification of a conserved interface between PUF and CPEB proteins. *J Biol Chem* 2012, 287:18854–18862.
122. Suh N, Crittenden SL, Goldstrohm A, Hook B, Thompson B, Wickens M, Kimble J. FBF and its dual control of *gld-1* expression in the *Caenorhabditis elegans* germline. *Genetics* 2009, 181:1249–1260.
123. Schmid M, Kuchler B, Eckmann CR. Two conserved regulatory cytoplasmic poly(A) polymerases, GLD-4 and GLD-2, regulate meiotic progression in *C. elegans*. *Genes Dev* 2009, 23:824–836.
124. Suh N, Jedamzik B, Eckmann CR, Wickens M, Kimble J. The GLD-2 poly(A) polymerase activates *gld-1* mRNA in the *Caenorhabditis elegans* germ line. *Proc Natl Acad Sci USA* 2006, 103:15108–15112.

125. Jenkins HT, Malkova B, Edwards TA. Kinked  $\beta$ -strands mediate high-affinity recognition of mRNA targets by the germ-cell regulator DAZL. *Proc Natl Acad Sci USA* 2011, 108:18266–18271.
126. Padmanabhan K, Richter JD. Regulated Pumilio-2 binding controls RINGO/Spy mRNA translation and CPEB activation. *Genes Dev* 2006, 20:199–209.
127. Collier B, Gorgoni B, Loveridge C, Cooke HJ, Gray NK. The DAZL family proteins are PABP-binding proteins that regulate translation in germ cells. *EMBO J* 2005, 24:2656–2666.
128. Moore FL, Jaruzelska J, Fox MS, Urano J, Firpo MT, Turek PJ, Dorfman DM, Pera RA. Human Pumilio-2 is expressed in embryonic stem cells and germ cells and interacts with DAZ (Deleted in AZoospermia) and DAZ-like proteins. *Proc Natl Acad Sci USA* 2003, 100:538–543.
129. Nakahata S, Kawamoto S. Tissue-dependent isoforms of mammalian Fox-1 homologs are associated with tissue-specific splicing activities. *Nucleic Acids Res* 2005, 33:2078–2089.
130. Yeo GW, Coufal NG, Liang TY, Peng GE, Fu XD, Gage FH. An RNA code for the FOX2 splicing regulator revealed by mapping RNA-protein interactions in stem cells. *Nat Struct Mol Biol* 2009, 16:130–137.
131. Papin C, Rouget C, Mandart E. *Xenopus* Rbm9 is a novel interactor of XGld2 in the cytoplasmic polyadenylation complex. *FEBS J* 2008, 275:490–503.
132. Didiot MC, Tian Z, Schaeffer C, Subramanian M, Mandel JL, Moine H. The G-quartet containing FMRP binding site in FMR1 mRNA is a potent exonic splicing enhancer. *Nucleic Acids Res* 2008, 36:4902–4912.
133. Zalfa F, Adinolfi S, Napoli I, Kuhn-Holsken E, Urlaub H, Achsel T, Pastore A, Bagni C. Fragile X mental retardation protein (FMRP) binds specifically to the brain cytoplasmic RNAs BC1/BC200 via a novel RNA-binding motif. *J Biol Chem* 2005, 280:33403–33410.
134. Darnell JC, Van Driesche SJ, Zhang C, Hung KY, Mele A, Fraser CE, Stone EF, Chen C, Fak JJ, Chi SW, *et al.* FMRP stalls ribosomal translocation on mRNAs linked to synaptic function and autism. *Cell* 2011, 146:247–261.
135. Ascano M Jr, Mukherjee N, Bandaru P, Miller JB, Nusbaum JD, Corcoran DL, Langlois C, Munschauer M, Dewell S, Hafner M, *et al.* FMRP targets distinct mRNA sequence elements to regulate protein expression. *Nature* 2012, 492:382–386.
136. Kwak JE, Drier E, Barbee SA, Ramaswami M, Yin JC, Wickens M. GLD2 poly(A) polymerase is required for long-term memory. *Proc Natl Acad Sci USA* 2008, 105:14644–14649.
137. Costa A, Wang Y, Dockendorff TC, Erdjument-Bromage H, Tempst P, Schedl P, Jongens TA. The *Drosophila* fragile X protein functions as a negative regulator in the orb autoregulatory pathway. *Dev Cell* 2005, 8:331–342.
138. Kwak JE, Wang L, Ballantyne S, Kimble J, Wickens M. Mammalian GLD-2 homologs are poly(A) polymerases. *Proc Natl Acad Sci USA* 2004, 101:4407–4412.
139. Benoit P, Papin C, Kwak JE, Wickens M, Simonelig M. PAP- and GLD-2-type poly(A) polymerases are required sequentially in cytoplasmic polyadenylation and oogenesis in *Drosophila*. *Development* 2008, 135:1969–1979.
140. Gebauer F, Richter JD. Cloning and characterization of a *Xenopus* poly(A) polymerase. *Mol Cell Biol* 1995, 15:1422–1430.
141. Bilger A, Fox CA, Wahle E, Wickens M. Nuclear polyadenylation factors recognize cytoplasmic polyadenylation elements. *Genes Dev* 1994, 8:1106–1116.
142. Zhao WQ, Manley JL. Complex alternative RNA processing generates an unexpected diversity of poly(A) polymerase isoforms. *Mol Cell Biol* 1996, 16:2378–2386.
143. Nakanishi T, Kubota H, Ishibashi N, Kumagai S, Watanabe H, Yamashita M, Kashiwabara S, Miyado K, Baba T. Possible role of mouse poly(A) polymerase mGLD-2 during oocyte maturation. *Dev Biol* 2006, 289:115–126.
144. Nakanishi T, Kumagai S, Kimura M, Watanabe H, Sakurai T, Kimura M, Kashiwabara S, Baba T. Disruption of mouse poly(A) polymerase mGLD-2 does not alter polyadenylation status in oocytes and somatic cells. *Biochem Biophys Res Commun* 2007, 364:14–19.
145. Burns DM, D'Ambrogio A, Nottrott S, Richter JD. CPEB and two poly(A) polymerases control miR-122 stability and p53 mRNA translation. *Nature* 2011, 473:105–108.
146. Choi HS, Lee SH, Kim H, Lee Y. Germ cell-specific gene 1 targets testis-specific poly(A) polymerase to the endoplasmic reticulum through protein-protein interactions. *FEBS Lett* 2008, 582:1203–1209.
147. Kashiwabara S, Zhuang T, Yamagata K, Noguchi J, Fukamizu A, Baba T. Identification of a novel isoform of poly(A) polymerase, TPAP, specifically present in the cytoplasm of spermatogenic cells. *Dev Biol* 2000, 228:106–115.
148. Kashiwabara S, Noguchi J, Zhuang T, Ohmura K, Honda A, Sugiura S, Miyamoto K, Takahashi S, Inoue K, Ogura A, *et al.* Regulation of spermatogenesis by testis-specific, cytoplasmic poly(A) polymerase TPAP. *Science* 2002, 298:1999–2002.
149. Kashiwabara SI, Nakanishi T, Kimura M, Baba T. Non-canonical poly(A) polymerase in mammalian gametogenesis. *Biochim Biophys Acta* 2008, 1779:230–238.

150. Zhuang T, Kashiwabara S, Noguchi J, Baba T. Transgenic expression of testis-specific poly(A) polymerase TPAP in wild-type and TPAP-deficient mice. *J Reprod Dev* 2004, 50:207–213.
151. Fernandez-Miranda G, Mendez R. The CPEB-family of proteins, translational control in senescence and cancer. *Ageing Res Rev* 2012, 11:460–472.
152. Wang XP, Cooper NG. Comparative in silico analyses of cpeb1-4 with functional predictions. *Bioinform Biol Insights* 2010, 4:61–83.
153. Hake LE, Mendez R, Richter JD. Specificity of RNA binding by CPEB: requirement for RNA recognition motifs and a novel zinc finger. *Mol Cell Biol* 1998, 18:685–693.
154. Stebbins-Boaz B, Hake LE, Richter JD. CPEB controls the cytoplasmic polyadenylation of cyclin, Cdk2 and *c-mos* mRNAs and is necessary for oocyte maturation in *Xenopus*. *EMBO J* 1996, 15:2582–2592.
155. Groisman I, Huang YS, Mendez R, Cao Q, Richter JD. Translational control of embryonic cell division by CPEB and maskin. *Cold Spring Harb Symp Quant Biol* 2001, 66:345–351.
156. Tay J, Richter JD. Germ cell differentiation and synaptonemal complex formation are disrupted in CPEB knockout mice. *Dev Cell* 2001, 1:201–213.
157. Castagnetti S, Ephrussi A. Orb and a long poly(A) tail are required for efficient oskar translation at the posterior pole of the *Drosophila* oocyte. *Development* 2003, 130:835–843.
158. Jin SW, Arno N, Cohen A, Shah A, Xu Q, Chen N, Ellis RE. In *Caenorhabditis elegans*, the RNA-binding domains of the cytoplasmic polyadenylation element binding protein FOG-1 are needed to regulate germ cell fates. *Genetics* 2001, 159:1617–1630.
159. Luitjens C, Gallegos M, Kraemer B, Kimble J, Wickens M. CPEB proteins control two key steps in spermatogenesis in *C. elegans*. *Genes Dev* 2000, 14:2596–2609.
160. Chang JS, Tan L, Schedl P. The *Drosophila* CPEB homolog, orb, is required for oskar protein expression in oocytes. *Dev Biol* 1999, 215:91–106.
161. Juge F, Zaessinger S, Temme C, Wahle E, Simonelig M. Control of poly(A) polymerase level is essential to cytoplasmic polyadenylation and early development in *Drosophila*. *EMBO J* 2002, 21:6603–6613.
162. Dickson KS, Bilger A, Ballantyne S, Wickens MP. The cleavage and polyadenylation specificity factor in *Xenopus laevis* oocytes is a cytoplasmic factor involved in regulated polyadenylation. *Mol Cell Biol* 1999, 19:5707–5717.
163. Kim JH, Richter JD. Opposing polymerase-deadenylase activities regulate cytoplasmic polyadenylation. *Mol Cell* 2006, 24:173–183.
164. van Etten J, Schagat TL, Hrit J, Weidmann C, Brumbaugh J, Coon JJ, Goldstrohm AC. Human Pumilio proteins recruit multiple deadenylases to efficiently repress messenger RNAs. *J Biol Chem* 2012, 287:36370–36383.
165. Friend K, Brook M, Bezirci FB, Sheets MD, Gray NK, Seli E. Embryonic poly(A)-binding protein (ePAB) phosphorylation is required for *Xenopus* oocyte maturation. *Biochem J* 2012, 445:93–100.
166. Mendez R, Murthy KG, Ryan K, Manley JL, Richter JD. Phosphorylation of CPEB by Eg2 mediates the recruitment of CPSF into an active cytoplasmic polyadenylation complex. *Mol Cell* 2000, 6:1253–1259.
167. Barnard DC, Cao Q, Richter JD. Differential phosphorylation controls Maskin association with eukaryotic translation initiation factor 4E and localization on the mitotic apparatus. *Mol Cell Biol* 2005, 25:7605–7615.
168. Kim JH, Richter JD. RINGO/cdk1 and CPEB mediate poly(A) tail stabilization and translational regulation by ePAB. *Genes Dev* 2007, 21:2571–2579.
169. Cao Q, Richter JD. Dissolution of the maskin-eIF4E complex by cytoplasmic polyadenylation and poly(A)-binding protein controls cyclin B1 mRNA translation and oocyte maturation. *EMBO J* 2002, 21:3852–3862.
170. Hägele S, Kuhn U, Boning M, Katschinski DM. Cytoplasmic polyadenylation-element-binding protein (CPEB)1 and 2 bind to the HIF-1 $\alpha$  mRNA 3'-UTR and modulate HIF-1 $\alpha$  protein expression. *Biochem J* 2009, 417:235–246.
171. Nairismagi ML, Vislovukh A, Meng Q, Kratassiouk G, Beldiman C, Petretich M, Groisman R, Fuchtbauer EM, Harel-Bellan A, Groisman I. Translational control of TWIST1 expression in MCF-10A cell lines recapitulating breast cancer progression. *Oncogene* 2012, 31:4960–4966.
172. Dickson KS, Thompson SR, Gray NK, Wickens M. Poly(A) polymerase and the regulation of cytoplasmic polyadenylation. *J Biol Chem* 2001, 276:41810–41816.
173. Nakahata S, Kotani T, Mita K, Kawasaki T, Katsu Y, Nagahama Y, Yamashita M. Involvement of *Xenopus* Pumilio in the translational regulation that is specific to cyclin B1 mRNA during oocyte maturation. *Mech Dev* 2003, 120:865–880.
174. Tucker M, Staples RR, Valencia-Sanchez MA, Muhrad D, Parker R. Ccr4p is the catalytic subunit of a Ccr4p/Pop2p/Notp mRNA deadenylase complex in *Saccharomyces cerevisiae*. *EMBO J* 2002, 21:1427–1436.
175. Wreden C, Verrotti AC, Schisa JA, Lieberfarb ME, Strickland S. *Nanos* and *pumilio* establish embryonic polarity in *Drosophila* by promoting posterior deadenylation of *hunchback* mRNA. *Development* 1997, 124:3015–3023.

176. Gavin AC, Bosche M, Krause R, Grandi P, Marzioch M, Bauer A, Schultz J, Rick JM, Michon AM, Cruciat CM, *et al.* Functional organization of the yeast proteome by systematic analysis of protein complexes. *Nature* 2002, 415:141–147.
177. Hodgman R, Tay J, Mendez R, Richter JD. CPEB phosphorylation and cytoplasmic polyadenylation are catalyzed by the kinase IAK1/Eg2 in maturing mouse oocytes. *Development* 2001, 128:2815–2822.
178. Tay J, Hodgman R, Sarkissian M, Richter JD. Regulated CPEB phosphorylation during meiotic progression suggests a mechanism for temporal control of maternal mRNA translation. *Genes Dev* 2003, 17: 1457–1462.
179. Keady BT, Kuo P, Martinez SE, Yuan L, Hake LE. MAPK interacts with XGef and is required for CPEB activation during meiosis in *Xenopus* oocytes. *J Cell Sci* 2007, 120:1093–1103.
180. Kuo P, Runge E, Lu X, Hake LE. XGef influences XRINGO/CDK1 signaling and CPEB activation during *Xenopus* oocyte maturation. *Differentiation* 2010, 81:133–140.
181. Frank-Vaillant M, Haccard O, Thibier C, Ozon R, Arlot-Bonnemains Y, Prigent C, Jessus C. Progesterone regulates the accumulation and the activation of Eg2 kinase in *Xenopus* oocytes. *J Cell Sci* 2000, 113: 1127–1138.
182. Ma C, Cummings C, Liu XJ. Biphasic activation of Aurora-A kinase during the meiosis I- meiosis II transition in *Xenopus* oocytes. *Mol Cell Biol* 2003, 23:1703–1716.
183. Maton G, Thibier C, Castro A, Lorca T, Prigent C, Jessus C. Cdc2-cyclin B triggers H3 kinase activation of Aurora-A in *Xenopus* oocytes. *J Biol Chem* 2003, 278:21439–21449.
184. Wong LC, Costa A, McLeod I, Sarkeshik A, Yates J III, Kyin S, Perlman D, Schedl P. The functioning of the *Drosophila* CPEB protein Orb is regulated by phosphorylation and requires casein kinase 2 activity. *PLoS One* 2011, 6:e24355.
185. Vardy L, Pesin JA, Orr-Weaver TL. Regulation of Cyclin A protein in meiosis and early embryogenesis. *Proc Natl Acad Sci USA* 2009, 106:1838–1843.
186. Bouvet P, Omilli F, Arlot-Bonnemains Y, Legagneux V, Roghi C, Bassez T, Osborne HB. The deadenylation conferred by the 3' untranslated region of a developmentally controlled mRNA in *Xenopus* embryos is switched to polyadenylation by deletion of a short sequence element. *Mol Cell Biol* 1994, 14: 1893–1900.
187. Rouhana L, Wickens M. Autoregulation of GLD-2 cytoplasmic poly(A) polymerase. *RNA* 2007, 13: 188–199.
188. Tan L, Chang JS, Costa A, Schedl P. An autoregulatory feedback loop directs the localized expression of the *Drosophila* CPEB protein Orb in the developing oocyte. *Development* 2001, 128: 1159–1169.
189. Wong LC, Schedl P. Cup blocks the precocious activation of the orb autoregulatory loop. *PLoS One* 2011, 6:e28261.
190. Reverte CG, Ahearn MD, Hake LE. CPEB degradation during *Xenopus* oocyte maturation requires a PEST domain and the 26S proteasome. *Dev Biol* 2001, 231:447–458.
191. Setoyama D, Yamashita M, Sagata N. Mechanism of degradation of CPEB during *Xenopus* oocyte maturation. *Proc Natl Acad Sci USA* 2007, 104: 18001–18006.
192. Lin CL, Huang YT, Richter JD. Transient CPEB dimerization and translational control. *RNA* 2012, 18: 1050–1061.
193. Sagata N, Oskarsson M, Copeland T, Brumbaugh J, Vande Woude GF. Function of *c-mos* proto-oncogene product in meiotic maturation in *Xenopus* oocytes. *Nature* 1988, 335:519–525.
194. Sheets MD, Wu M, Wickens M. Polyadenylation of *c-mos* mRNA as a control point in *Xenopus* meiotic maturation. *Nature* 1995, 374:511–516.
195. De Moor CH, Richter JD. The Mos pathway regulates cytoplasmic polyadenylation in *Xenopus* oocytes. *Mol Cell Biol* 1997, 17:6419–6426.
196. Belloc E, Pique M, Mendez R. Sequential waves of polyadenylation and deadenylation define a translation circuit that drives meiotic progression. *Biochem Soc Trans* 2008, 36:665–670.
197. Racki WJ, Richter JD. CPEB controls oocyte growth and follicle development in the mouse. *Development* 2006, 133:4527–4537.
198. Gebauer F, Xu W, Cooper GM, Richter JD. Translational control by cytoplasmic polyadenylation of *c-mos* mRNA is necessary for oocyte maturation in the mouse. *EMBO J* 1994, 13:5712–5720.
199. Seli E, Lalioti MD, Flaherty SM, Sakkas D, Terzi N, Steitz JA. An embryonic poly(A)-binding protein (ePAB) is expressed in mouse oocytes and early preimplantation embryos. *Proc Natl Acad Sci USA* 2005, 102:367–372.
200. Guzeloglu-Kayisli O, Pauli S, Demir H, Lalioti MD, Sakkas D, Seli E. Identification and characterization of human embryonic poly(A) binding protein (EPAB). *Mol Hum Reprod* 2008, 14:581–588.
201. Guzeloglu-Kayisli O, Lalioti MD, Aydiner F, Sasson I, Ilbay O, Sakkas D, Lowther KM, Mehlmann LM, Seli E. Embryonic poly(A)-binding protein (EPAB) is required for oocyte maturation and female fertility in mice. *Biochem J* 2012, 446:47–58.
202. Wang H, Li Y, Wang Y, Han ZG, Cai B. C9orf100, a new member of the Dbl-family guanine nucleotide exchange factors, promotes cell proliferation and migration in hepatocellular carcinoma. *Mol Med Report* 2012, 5:1169–1174.

203. Reverte CG, Yuan L, Keady BT, Lacza C, Attfield KR, Mahon GM, Freeman B, Whitehead IP, Hake LE. XGef is a CPEB-interacting protein involved in *Xenopus* oocyte maturation. *Dev Biol* 2003, 255:383–398.
204. Martinez SE, Yuan L, Lacza C, Ransom H, Mahon GM, Whitehead IP, Hake LE. XGef mediates early CPEB phosphorylation during *Xenopus* oocyte meiotic maturation. *Mol Biol Cell* 2005, 16:1152–1164.
205. Ferby I, Blazquez M, Palmer A, Eritja R, Nebreda AR. A novel p34(cdc2)-binding and activating protein that is necessary and sufficient to trigger G(2)/M progression in *Xenopus* oocytes. *Genes Dev* 1999, 13:2177–2189.
206. Sakakibara S, Nakamura Y, Yoshida T, Shibata S, Koike M, Takano H, Ueda S, Uchiyama Y, Noda T, Okano H. RNA-binding protein Musashi family: roles for CNS stem cells and a subpopulation of ependymal cells revealed by targeted disruption and antisense ablation. *Proc Natl Acad Sci USA* 2002, 99:15194–15199.
207. Gunter KM, McLaughlin EA. Translational control in germ cell development: a role for the RNA-binding proteins Musashi-1 and Musashi-2. *IUBMB Life* 2011, 63:678–685.
208. Wu X, Viveiros MM, Eppig JJ, Bai Y, Fitzpatrick SL, Matzuk MM. Zygote arrest 1 (Zar1) is a novel maternal-effect gene critical for the oocyte-to-embryo transition. *Nat Genet* 2003, 33:187–191.
209. Hu J, Wang F, Zhu X, Yuan Y, Ding M, Gao S. Mouse ZAR1-like (XM\_359149) colocalizes with mRNA processing components and its dominant-negative mutant caused two-cell-stage embryonic arrest. *Dev Dyn* 2010, 239:407–424.
210. Brook M, Smith JW, Gray NK. The DAZL and PABP families: RNA-binding proteins with interrelated roles in translational control in oocytes. *Reproduction* 2009, 137:595–617.
211. Reynolds N, Collier B, Bingham V, Gray NK, Cooke HJ. Translation of the synaptonemal complex component Sycp3 is enhanced in vivo by the germ cell specific regulator Dazl. *RNA* 2007, 13:974–981.
212. Kosaka K, Kawakami K, Sakamoto H, Inoue K. Spatiotemporal localization of germ plasm RNAs during zebrafish oogenesis. *Mech Dev* 2007, 124:279–289.
213. Wiszniak SE, Dredge BK, Jensen KB. HuB (elavl2) mRNA is restricted to the germ cells by post-transcriptional mechanisms including stabilisation of the message by DAZL. *PLoS One* 2011, 6:e20773.
214. Zeng M, Lu Y, Liao X, Li D, Sun H, Liang S, Zhang S, Ma Y, Yang Z. DAZL binds to 3'UTR of Tex19.1 mRNAs and regulates Tex19.1 expression. *Mol Biol Rep* 2009, 36:2399–2403.
215. Osborne HB, Duval C, Ghoda L, Omilli F, Bassez T, Coffino P. Expression and post-transcriptional regulation of ornithine decarboxylase during early *Xenopus* development. *Eur J Biochem* 1991, 202:575–581.
216. Slevin MK, Gourronc F, Hartley RS. ElrA binding to the 3'UTR of cyclin E1 mRNA requires polyadenylation elements. *Nucleic Acids Res* 2007, 35:2167–2176.
217. Paillard L, Maniey D, Lachaume P, Legagneux V, Osborne HB. Identification of a C-rich element as a novel cytoplasmic polyadenylation element in *Xenopus* embryos. *Mech Dev* 2000, 93:117–125.
218. Gravina P, Campioni N, Loreni F, Pierandrei-Amaldi P, Cardinali B. Complementary DNA analysis, expression and subcellular localization of hnRNP E2 gene in *Xenopus laevis*. *Gene* 2002, 290:193–201.
219. Kim KW, Nykamp K, Suh N, Bachorik JL, Wang L, Kimble J. Antagonism between GLD-2 binding partners controls gamete sex. *Dev Cell* 2009, 16:723–733.
220. Eckmann CR, Crittenden SL, Suh N, Kimble J. GLD-3 and control of the mitosis/meiosis decision in the germline of *Caenorhabditis elegans*. *Genetics* 2004, 168:147–160.
221. Eckmann CR, Kraemer B, Wickens M, Kimble J. GLD-3, a bicaudal-C homolog that inhibits FBF to control germline sex determination in *C. elegans*. *Dev Cell* 2002, 3:697–710.
222. Nakel K, Hartung SA, Bonneau F, Eckmann CR, Conti E. Four KH domains of the *C. elegans* bicaudal-C ortholog GLD-3 form a globular structural platform. *RNA* 2010, 16:2058–2067.
223. Chicoine J, Benoit P, Gamberi C, Paliouras M, Simonelig M, Lasko P. Bicaudal-C recruits CCR4-NOT deadenylase to target mRNAs and regulates oogenesis, cytoskeletal organization, and its own expression. *Dev Cell* 2007, 13:691–704.
224. Rybarska A, Harterink M, Jedamzik B, Kupinski AP, Schmid M, Eckmann CR. GLS-1, a novel P granule component, modulates a network of conserved RNA regulators to influence germ cell fate decisions. *PLoS Genet* 2009, 5:e1000494.
225. Weiss J, Hurley LA, Harris RM, Finlayson C, Tong M, Fisher LA, Moran JL, Beier DR, Mason C, Jameson JL. ENU mutagenesis in mice identifies candidate genes for hypogonadism. *Mamm Genome* 2012, 23:346–355.
226. Coll O, Villalba A, Bussotti G, Notredame C, Gebauer F. A novel, noncanonical mechanism of cytoplasmic polyadenylation operates in *Drosophila* embryogenesis. *Genes Dev* 2010, 24:129–134.
227. Brawerman G, Diez J. Metabolism of the polyadenylate sequence of nuclear RNA and messenger RNA in mammalian cells. *Cell* 1975, 5:271–280.
228. Watanabe T, Yachi K, Ohta T, Fukushima T, Yoshino A, Katayama Y, Shinojima Y, Terui T, Nagase H. Non-promoter hypermethylation of zygote arrest 1

- (ZAR1) in human brain tumors. *Brain Tumor Pathol* 2011, 28:199–202.
229. Shinojima Y, Terui T, Hara H, Kimura M, Igarashi J, Wang X, Kawashima H, Kobayashi Y, Muroi S, Hayakawa S, *et al.* Identification and analysis of an early diagnostic marker for malignant melanoma: ZAR1 intra-genic differential methylation. *J Dermatol Sci* 2010, 59:98–106.
230. Ezeh UI, Turek PJ, Reijo RA, Clark AT. Human embryonic stem cell genes OCT4, NANOG, STELLAR, and GDF3 are expressed in both seminoma and breast carcinoma. *Cancer* 2005, 104:2255–2265.
231. Du L, Richter JD. Activity-dependent polyadenylation in neurons. *RNA* 2005, 11:1340–1347.
232. Huang YS, Jung MY, Sarkissian M, Richter JD. N-methyl-D-aspartate receptor signaling results in Aurora kinase-catalyzed CPEB phosphorylation and  $\alpha$  CaMKII mRNA polyadenylation at synapses. *EMBO J* 2002, 21:2139–2148.
233. Wells DG, Dong X, Quinlan EM, Huang YS, Bear MF, Richter JD, Fallon JR. A role for the cytoplasmic polyadenylation element in NMDA receptor-regulated mRNA translation in neurons. *J Neurosci* 2001, 21:9541–9548.
234. Wu L, Wells D, Tay J, Mendis D, Abbott MA, Barnitt A, Quinlan E, Heynen A, Fallon JR, Richter JD. CPEB-mediated cytoplasmic polyadenylation and the regulation of experience-dependent translation of  $\alpha$ -CaMKII mRNA at synapses. *Neuron* 1998, 21:1129–1139.
235. Zearfoss NR, Alarcon JM, Trifilieff P, Kandel E, Richter JD. A molecular circuit composed of CPEB-1 and c-Jun controls growth hormone-mediated synaptic plasticity in the mouse hippocampus. *J Neurosci* 2008, 28:8502–8509.
236. Huang YS, Carson JH, Barbarese E, Richter JD. Facilitation of dendritic mRNA transport by CPEB. *Genes Dev* 2003, 17:638–653.
237. Bestman JE, Cline HT. The relationship between dendritic branch dynamics and CPEB-labeled RNP granules captured in vivo. *Front Neural Circuits* 2009, 3:10(Epub ahead of print, September 1, 2009).
238. Bestman JE, Cline HT. The RNA binding protein CPEB regulates dendrite morphogenesis and neuronal circuit assembly in vivo. *Proc Natl Acad Sci USA* 2008, 105:20494–20499.
239. Atkins CM, Davare MA, Oh MC, Derkach V, Soderling TR. Bidirectional regulation of cytoplasmic polyadenylation element-binding protein phosphorylation by Ca<sup>2+</sup>/calmodulin-dependent protein kinase II and protein phosphatase 1 during hippocampal long-term potentiation. *J Neurosci* 2005, 25:5604–5610.
240. Atkins CM, Nozaki N, Shigeri Y, Soderling TR. Cytoplasmic polyadenylation element binding protein-dependent protein synthesis is regulated by calcium/calmodulin-dependent protein kinase II. *J Neurosci* 2004, 24:5193–5201.
241. Udagawa T, Swanger SA, Takeuchi K, Kim JH, Nalavadi V, Shin J, Lorenz LJ, Zukin RS, Bassell GJ, Richter JD. Bidirectional control of mRNA translation and synaptic plasticity by the cytoplasmic polyadenylation complex. *Mol Cell* 2012, 47:253–266.
242. Aslam N, Shouval HZ. Regulation of cytoplasmic polyadenylation can generate a bistable switch. *BMC Syst Biol* 2012, 6:12.
243. Si K, Giustetto M, Etkin A, Hsu R, Janisiewicz AM, Miniaci MC, Kim JH, Zhu H, Kandel ER. A neuronal isoform of CPEB regulates local protein synthesis and stabilizes synapse-specific long-term facilitation in aplysia. *Cell* 2003, 115:893–904.
244. Si K, Lindquist S, Kandel ER. A neuronal isoform of the aplysia CPEB has prion-like properties. *Cell* 2003, 115:879–891.
245. Si K, Choi YB, White-Grindley E, Majumdar A, Kandel ER. Aplysia CPEB can form prion-like multimers in sensory neurons that contribute to long-term facilitation. *Cell* 2010, 140:421–435.
246. Kruttner S, Stepien B, Noordermeer JN, Mommaas MA, Mechtler K, Dickson BJ, Keleman K. *Drosophila* CPEB Orb2A mediates memory independent of Its RNA-binding domain. *Neuron* 2012, 76:383–395.
247. Kondrashov A, Meijer HA, Barthet-Barateig A, Parker HN, Khurshid A, Tessier S, Sicard M, Knox AJ, Pang L, De Moor CH. Inhibition of polyadenylation reduces inflammatory gene induction. *RNA* 2012, 18:2236–2250.
248. Wong YY, Moon A, Duffin R, Barthet-Barateig A, Meijer HA, Clemens MJ, De Moor CH. Cordycepin inhibits protein synthesis and cell adhesion through effects on signal transduction. *J Biol Chem* 2010, 285:2610–2621.
249. Hafer N, Xu S, Bhat KM, Schedl P. The *Drosophila* CPEB protein Orb2 has a novel expression pattern and is important for asymmetric cell division and nervous system function. *Genetics* 2011, 189:907–921.
250. Keleman K, Kruttner S, Alenius M, Dickson BJ. Function of the *Drosophila* CPEB protein Orb2 in long-term courtship memory. *Nat Neurosci* 2007, 10:1587–1593.
251. Jones KJ, Korb E, Kundel MA, Kochanek AR, Kabraji S, McEvoy M, Shin CY, Wells DG. CPEB1 regulates  $\beta$ -catenin mRNA translation and cell migration in astrocytes. *Glia* 2008, 56:1401–1413.
252. Kundel M, Jones KJ, Shin CY, Wells DG. Cytoplasmic polyadenylation element-binding protein regulates neurotrophin-3-dependent  $\beta$ -catenin mRNA translation in developing hippocampal neurons. *J Neurosci* 2009, 29:13630–13639.
253. McEvoy M, Cao G, Llopis PM, Kundel M, Jones K, Hofler C, Shin C, Wells DG. Cytoplasmic

- polyadenylation element binding protein 1-mediated mRNA translation in Purkinje neurons is required for cerebellar long-term depression and motor coordination. *J Neurosci* 2007, 27:6400–6411.
254. Vessey JP, Schoderboeck L, Gingl E, Luzi E, Riefler J, Di LF, Karra D, Thomas S, Kiebler MA, Macchi P. Mammalian Pumilio 2 regulates dendrite morphogenesis and synaptic function. *Proc Natl Acad Sci USA* 2010, 107:3222–3227.
255. Kuo MW, Wang SH, Chang JC, Chang CH, Huang LJ, Lin HH, Yu AL, Li WH, Yu J. A novel puf-A gene predicted from evolutionary analysis is involved in the development of eyes and primordial germ-cells. *PLoS One* 2009, 4:e4980.
256. Menon KP, Andrews S, Murthy M, Gavis ER, Zinn K. The translational repressors Nanos and Pumilio have divergent effects on presynaptic terminal growth and postsynaptic glutamate receptor subunit composition. *J Neurosci* 2009, 29:5558–5572.
257. Chen G, Li W, Zhang QS, Regulski M, Sinha N, Barditch J, Tully T, Krainer AR, Zhang MQ, Dubnau J. Identification of synaptic targets of *Drosophila* pumilio. *PLoS Comput Biol* 2008, 4:e1000026.
258. Baines RA. Neuronal homeostasis through translational control. *Mol Neurobiol* 2005, 32:113–121.
259. Zhong J, Zhang T, Bloch LM. Dendritic mRNAs encode diversified functionalities in hippocampal pyramidal neurons. *BMC Neurosci* 2006, 7:17.
260. Ye B, Petritsch C, Clark IE, Gavis ER, Jan LY, Jan YN. Nanos and Pumilio are essential for dendrite morphogenesis in *Drosophila* peripheral neurons. *Curr Biol* 2004, 14:314–321.
261. Alarcon JM, Hodgman R, Theis M, Huang YS, Kandel ER, Richter JD. Selective modulation of some forms of schaffer collateral-CA1 synaptic plasticity in mice with a disruption of the CPEB-1 gene. *Learn Mem* 2004, 11:318–327.
262. Berger-Sweeney J, Zearfoss NR, Richter JD. Reduced extinction of hippocampal-dependent memories in CPEB knockout mice. *Learn Mem* 2006, 13:4–7.
263. Theis M, Si K, Kandel ER. Two previously undescribed members of the mouse CPEB family of genes and their inducible expression in the principal cell layers of the hippocampus. *Proc Natl Acad Sci USA* 2003, 100:9602–9607.
264. Pavlopoulos E, Trifilieff P, Chevaleyre V, Fioriti L, Zairis S, Pagano A, Malleret G, Kandel ER. Neuralized1 activates CPEB3: a function for nonproteolytic ubiquitin in synaptic plasticity and memory storage. *Cell* 2011, 147:1369–1383.
265. Wang CF, Huang YS. Calpain 2 activated through N-Methyl-D-aspartic acid receptor signaling cleaves CPEB3 and abrogates CPEB3-repressed translation in neurons. *Mol Cell Biol* 2012, 32:3321–3332.
266. Vogler C, Spalek K, Aerni A, Demoguin P, Muller A, Huynh KD, Papassotiropoulos A, de Quervain DJ. CPEB3 is associated with human episodic memory. *Front Behav Neurosci* 2009, 3:4(Epub ahead of print, May 4, 2009).
267. Hosoda N, Funakoshi Y, Hirasawa M, Yamagishi R, Asano Y, Miyagawa R, Ogami K, Tsujimoto M, Hoshino S. Anti-proliferative protein Tob negatively regulates CPEB3 target by recruiting Caf1 deadenylase. *EMBO J* 2011, 30:1311–1323.
268. Sasayama T, Marumoto T, Kunitoku N, Zhang D, Tamaki N, Kohmura E, Saya H, Hirota T. Over-expression of Aurora-A targets cytoplasmic polyadenylation element binding protein and promotes mRNA polyadenylation of Cdk1 and cyclin B1. *Genes Cells* 2005, 10:627–638.
269. Cao Q, Kim JH, Richter JD. CDK1 and calcineurin regulate Maskin association with eIF4E and translational control of cell cycle progression. *Nat Struct Mol Biol* 2006, 13:1128–1134.
270. Groisman I, Jung MY, Sarkissian M, Cao Q, Richter JD. Translational control of the embryonic cell cycle. *Cell* 2002, 109:473–483.
271. Pederson T, Robbins E. RNA synthesis in HeLa cells. Pattern in hypertonic medium and its similarity to synthesis during G2-prophase. *J Cell Biol* 1970, 47:734–744.
272. Burns DM, Richter JD. CPEB regulation of human cellular senescence, energy metabolism, and p53 mRNA translation. *Genes Dev* 2008, 22:3449–3460.
273. Groisman I, Ivshina M, Marin V, Kennedy NJ, Davis RJ, Richter JD. Control of cellular senescence by CPEB. *Genes Dev* 2006, 20:2701–2712.
274. Berndt H, Harnisch C, Rammelt C, Stohr N, Zirkel A, Dohm JC, Himmelbauer H, Tavanez JP, Huttelmaier S, Wahle E. Maturation of mammalian H/ACA box snoRNAs: PAPD5-dependent adenylation and PARN-dependent trimming. *RNA* 2012, 18:958–972.
275. Lin CL, Evans V, Shen S, Xing Y, Richter JD. The nuclear experience of CPEB: implications for RNA processing and translational control. *RNA* 2010, 16:338–348.
276. Kan MC, Oruganty-Das A, Cooper-Morgan A, Jin G, Swanger S, Bassell G, Florman H, Van LK, Richter JD. CPEB4 is a cell survival protein retained in the nucleus upon ischemia or endoplasmic reticulum calcium depletion. *Mol Cell Biol* 2010, 30:5658–5671.
277. Ernault-Lange M, Wilczynska A, Harper M, Aigueperse C, Dautry F, Kress M, Weil D. Nucleocytoplasmic traffic of CPEB1 and accumulation in Crm1 nucleolar bodies. *Mol Biol Cell* 2009, 20:176–187.
278. Kojima S, Sher-Chen EL, Green CB. Circadian control of mRNA polyadenylation dynamics regulates

- rhythmic protein expression. *Genes Dev* 2012, 26:2724–2736.
279. Okano H, Kawahara H, Toriya M, Nakao K, Shibata S, Imai T. Function of RNA-binding protein Musashi-1 in stem cells. *Exp Cell Res* 2005, 306:349–356.
  280. Clarke RB. Isolation and characterization of human mammary stem cells. *Cell Prolif* 2005, 38:375–386.
  281. Todaro M, Francipane MG, Medema JP, Stassi G. Colon cancer stem cells: promise of targeted therapy. *Gastroenterology* 2010, 138:2151–2162.
  282. Yen TH, Wright NA. The gastrointestinal tract stem cell niche. *Stem Cell Rev* 2006, 2:203–212.
  283. Cervello I, Mirantes C, Santamaria X, Dolcet X, Matias-Guiu X, Simon C. Stem cells in human endometrium and endometrial carcinoma. *Int J Gynecol Pathol* 2011, 30:317–327.
  284. de Andres-Aguayo L, Varas F, Graf T. Musashi 2 in hematopoiesis. *Curr Opin Hematol* 2012, 19:268–272.
  285. Kawahara H, Imai T, Imataka H, Tsujimoto M, Matsumoto K, Okano H. Neural RNA-binding protein Musashi1 inhibits translation initiation by competing with eIF4G for PABP. *J Cell Biol* 2008, 181:639–653.
  286. Quenault T, Lithgow T, Traven A. PUF proteins: repression, activation and mRNA localization. *Trends Cell Biol* 2011, 21:104–112.
  287. Kim SY, Kim JY, Malik S, Son W, Kwon KS, Kim C. Negative regulation of EGFR/MAPK pathway by Pumilio in *Drosophila melanogaster*. *PLoS One* 2012, 7:e34016.
  288. Bermudez O, Jouandin P, Rottier J, Bourcier C, Pages G, Gimond C. Post-transcriptional regulation of the DUSP6/MKP-3 phosphatase by MEK/ERK signalling and hypoxia. *J Cell Physiol* 2010, 226:276–284.
  289. Lee MH, Hook B, Pan G, Kershner AM, Merritt C, Seydoux G, Thomson JA, Wickens M, Kimble J. Conserved regulation of MAP kinase expression by PUF RNA-binding proteins. *PLoS Genet* 2007, 3:e233.
  290. Bouvrette DJ, Sittaramane V, Heidel JR, Chandrasekhar A, Bryda EC. Knockdown of bicaudal C in zebrafish (*Danio rerio*) causes cystic kidneys: a non-mammalian model of polycystic kidney disease. *Comp Med* 2010, 60:96–106.
  291. Cogswell C, Price SJ, Hou X, Guay-Woodford LM, Flaherty L, Bryda EC. Positional cloning of jcpk/bpk locus of the mouse. *Mamm Genome* 2003, 14:242–249.
  292. Kraus MR, Clauin S, Pfister Y, Di MM, Ulinski T, Constam D, Bellanne-Chantelot C, Grapin-Botton A. Two mutations in human BICC1 resulting in Wnt pathway hyperactivity associated with cystic renal dysplasia. *Hum Mutat* 2012, 33:86–90.
  293. Maisonneuve C, Guilleret I, Vick P, Weber T, Andre P, Beyer T, Blum M, Constam DB. Bicaudal C, a novel regulator of Dvl signaling abutting RNA-processing bodies, controls cilia orientation and leftward flow. *Development* 2009, 136:3019–3030.
  294. Ryan S, Verghese S, Cianciola NL, Cotton CU, Carlin CR. Autosomal recessive polycystic kidney disease epithelial cell model reveals multiple basolateral epidermal growth factor receptor sorting pathways. *Mol Biol Cell* 2010, 21:2732–2745.
  295. Fu Y, Kim I, Lian P, Li A, Zhou L, Li C, Liang D, Coffey RJ, Ma J, Zhao P, et al. Loss of Bicc1 impairs tubulomorphogenesis of cultured IMCD cells by disrupting E-cadherin-based cell-cell adhesion. *Eur J Cell Biol* 2010, 89:428–436.
  296. Nagaoka K, Udagawa T, Richter JD. CPEB-mediated ZO-1 mRNA localization is required for epithelial tight-junction assembly and cell polarity. *Nat Commun* 2012, 3:675. doi: 10.1038/ncomms1678.
  297. Kiessling F, Kartenbeck J, Haller C. Cell-cell contacts in the human cell line ECV304 exhibit both endothelial and epithelial characteristics. *Cell Tissue Res* 1999, 297:131–140.
  298. Paffenholz R, Kuhn C, Grund C, Stehr S, Franke WW. The arm-repeat protein NPRAP (neurojungin) is a constituent of the plaques of the outer limiting zone in the retina, defining a novel type of adhering junction. *Exp Cell Res* 1999, 250:452–464.
  299. Bouvrette DJ, Price SJ, Bryda EC. K homology domains of the mouse polycystic kidney disease-related protein, Bicaudal-C (Bicc1), mediate RNA binding in vitro. *Nephron Exp Nephrol* 2008, 108:e27–e34.
  300. Piazzon N, Maisonneuve C, Guilleret I, Rotman S, Constam DB. Bicc1 links the regulation of cAMP signaling in polycystic kidneys to microRNA-induced gene silencing. *J Mol Cell Biol* 2012, 4:398–408.
  301. Tran U, Zakin L, Schweickert A, Agrawal R, Doger R, Blum M, De Robertis EM, Wessely O. The RNA-binding protein bicaudal C regulates polycystin 2 in the kidney by antagonizing miR-17 activity. *Development* 2010, 137:1107–1116.
  302. von Roretz C, Di MS, Mazroui R, Gallouzi IE. Turnover of AU-rich-containing mRNAs during stress: a matter of survival. *Wiley Interdiscip Rev RNA* 2011, 2:336–347.
  303. Makeyev AV, Liebhaber SA. The poly(C)-binding proteins: a multiplicity of functions and a search for mechanisms. *RNA* 2002, 8:265–278.
  304. Ostareck-Lederer A, Ostareck DH. Control of mRNA translation and stability in haematopoietic cells: The function of hnRNPs K and E1/E2. *Biol Cell* 2004, 96:407–411.
  305. Eiring AM, Harb JG, Neviani P, Garton C, Oaks JJ, Spizzo R, Liu S, Schwind S, Santhanam R, Hickey CJ, et al. miR-328 functions as an RNA decoy to modulate hnRNP E2 regulation of mRNA translation in leukemic blasts. *Cell* 2010, 140:652–665.



306. Ji X, Kong J, Carstens RP, Liebhaber SA. The 3' untranslated region complex involved in stabilization of human  $\alpha$ -globin mRNA assembles in the nucleus and serves an independent role as a splice enhancer. *Mol Cell Biol* 2007, 27:3290–3302.
307. de Hoog CL, Foster LJ, Mann M. RNA and RNA binding proteins participate in early stages of cell spreading through spreading initiation centers. *Cell* 2004, 117:649–662.
308. Yang Q, Gilmartin GM, Doublet S. Structural basis of UGUA recognition by the Nudix protein CFI(m)25 and implications for a regulatory role in mRNA 3' processing. *Proc Natl Acad Sci USA* 2010, 107:10062–10067.
309. McPheeters DS, Cremona N, Sunder S, Chen HM, Averbek N, Leatherwood J, Wise JA. A complex gene regulatory mechanism that operates at the nexus of multiple RNA processing decisions. *Nat Struct Mol Biol* 2009, 16:255–264.
310. Houseley J, Tollervey D. The nuclear RNA surveillance machinery: the link between ncRNAs and genome structure in budding yeast? *Biochim Biophys Acta* 2008, 1779:239–246.
311. Katoh T, Sakaguchi Y, Miyauchi K, Suzuki T, Kashiwabara S, Baba T, Suzuki T. Selective stabilization of mammalian microRNAs by 3' adenylation mediated by the cytoplasmic poly(A) polymerase GLD-2. *Genes Dev* 2009, 23:433–438.
312. Shcherbik N, Wang M, Lapik YR, Srivastava L, Pestov DG. Polyadenylation and degradation of incomplete RNA polymerase I transcripts in mammalian cells. *EMBO Rep* 2010, 11:106–111.