



Hewlett, S. E., Kirwan, J. R., Pollock, J. I., Mitchell, K., Hehir, M., Blair, P. S. P., ... Perry, M. G. (2004). Patient initiated outpatient follow up in rheumatoid arthritis: six year randomised controlled trial. *British Medical Journal*, 330 (7484), 171 - 175. [10.1136/bmj.38265.493773.8F](https://doi.org/10.1136/bmj.38265.493773.8F)

Publisher's PDF, also known as Final Published Version

Link to published version (if available):
[10.1136/bmj.38265.493773.8F](https://doi.org/10.1136/bmj.38265.493773.8F)

[Link to publication record in Explore Bristol Research](#)
PDF-document

University of Bristol - Explore Bristol Research

General rights

This document is made available in accordance with publisher policies. Please cite only the published version using the reference above. Full terms of use are available:
<http://www.bristol.ac.uk/pure/about/ebr-terms.html>

Take down policy

Explore Bristol Research is a digital archive and the intention is that deposited content should not be removed. However, if you believe that this version of the work breaches copyright law please contact open-access@bristol.ac.uk and include the following information in your message:

- Your contact details
- Bibliographic details for the item, including a URL
- An outline of the nature of the complaint

On receipt of your message the Open Access Team will immediately investigate your claim, make an initial judgement of the validity of the claim and, where appropriate, withdraw the item in question from public view.



Patient initiated outpatient follow up in rheumatoid arthritis: six year randomised controlled trial

Sarah Hewlett, John Kirwan, Jon Pollock, Kathryn Mitchell, Maggie Hehir, Peter S Blair, David Memel and Mark G Perry

BMJ 2005;330;171-; originally published online 16 Nov 2004;
doi:10.1136/bmj.38265.493773.8F

Updated information and services can be found at:
<http://bmj.com/cgi/content/full/330/7484/171>

These include:

Data supplement

"Two tables of extra data"
<http://bmj.com/cgi/content/full/bmj.38265.493773.8F/DC1>

References

This article cites 22 articles, 4 of which can be accessed free at:
<http://bmj.com/cgi/content/full/330/7484/171#BIBL>

1 online articles that cite this article can be accessed at:
<http://bmj.com/cgi/content/full/330/7484/171#otherarticles>

Rapid responses

3 rapid responses have been posted to this article, which you can access for free at:
<http://bmj.com/cgi/content/full/330/7484/171#responses>

You can respond to this article at:
<http://bmj.com/cgi/eletter-submit/330/7484/171>

Email alerting service

Receive free email alerts when new articles cite this article - sign up in the box at the top right corner of the article

Topic collections

Articles on similar topics can be found in the following collections

[Randomized Controlled Trials: examples](#) (405 articles)
[Rheumatoid Arthritis](#) (829 articles)

Notes

To order reprints of this article go to:
<http://www.bmjournals.com/cgi/reprintform>

To subscribe to *BMJ* go to:
<http://bmj.bmjournals.com/subscriptions/subscribe.shtml>

Papers

Patient initiated outpatient follow up in rheumatoid arthritis: six year randomised controlled trial

Sarah Hewlett, John Kirwan, Jon Pollock, Kathryn Mitchell, Maggie Hehir, Peter S Blair, David Memel, Mark G Perry

Abstract

Objectives To determine whether direct access to hospital review initiated by patients with rheumatoid arthritis would result in improved clinical and psychological outcome, reduced overall use of healthcare resources, and greater satisfaction with care than seen in patients receiving regular review initiated by a rheumatologist.

Design Two year randomised controlled trial extended to six years.

Setting Rheumatology outpatient department in teaching hospital.

Participants 209 consecutive patients with rheumatoid arthritis for over two years; 68 (65%) in the direct access group and 52 (50%) in the control group completed the study ($P=0.04$).

Main outcome measures Clinical outcome: pain, disease activity, early morning stiffness, inflammatory indices, disability, grip strength, range of movement in joints, and bone erosion. Psychological status: anxiety, depression, helplessness, self efficacy, satisfaction, and confidence in the system. Number of visits to hospital physician and general practitioner for arthritis.

Results Participants were well matched at baseline. After six years there was only one significant difference between the two groups for the 14 clinical outcomes measured (deterioration in range of movement in elbow was less in direct access patients). There were no significant differences between groups for median change in psychological status. Satisfaction and confidence in the system were significantly higher in the direct access group at two, four, and six years: confidence 9.8 *v* 8.4, 9.4 *v* 8.0, 8.7 *v* 6.9; satisfaction 9.3 *v* 8.3, 9.3 *v* 7.7, 8.9 *v* 7.1 (all $P<0.02$). Patients in the direct access group had 38% fewer hospital appointments (median 8 *v* 13, $P<0.0001$).

Conclusions Over six years, patients with rheumatoid arthritis who initiated their reviews through direct access were clinically and psychologically at least as well as patients having traditional reviews initiated by a physician. They requested fewer appointments, found direct access more acceptable, and had more than a third fewer medical appointments. This radical responsive management could be tested in other chronic diseases.

Introduction

Patients with chronic inflammatory diseases such as asthma, inflammatory bowel disease, and rheumatoid arthritis are traditionally managed by regular hospital reviews initiated by a physician. Prebooked reviews may occur when the patient is well and little action is taken.¹ The volume of appointments leads to

an unwieldy system struggling to respond rapidly to requests for help in the face of fluctuating disease.

General practitioners believe that for such patients rapid specialist access in times of need is more important than routine hospital follow up,^{2,3} but hospital specialists may be reluctant to relinquish routine reviews.⁴ A study exploring the use of other professionals for routine reviews in asthma suggested that reviews had simply been moved into primary care,⁵ while a randomised controlled trial in rheumatoid arthritis showed other professionals could be effective.⁶

Lengthening periods between reviews or increasing discharge rates⁷ make some impact but do not address the fundamental belief that lifelong review is necessary and should be medically driven. Patients with chronic disease manage their condition every day and initiate appointments with their general practitioners when they are unwell, therefore hospital reviews initiated by the patient could be considered. This might reduce unnecessary reviews, increase capacity for rapid response to disease flares, and empower patients.⁸ Randomised controlled trials of such "open access" in inflammatory bowel disease found no clinical detriment but no saving in resources,⁹ while patients with ulcerative colitis managed their condition more rapidly in a crisis and requested fewer reviews.¹⁰

Rheumatoid arthritis is a chronic disease with unpredictable periods of inflammatory activity, culminating in disability, bone erosion, reduced range of movement, and fluctuating pain and psychological distress.¹¹ Patients have lifelong hospital reviews, initiated by rheumatologists every three to six months, which form about three quarters of a rheumatologist's workload.¹² Rheumatoid arthritis is therefore an appropriate disease to test a new system of access to review in chronic illnesses that use considerable NHS resources.^{13,14} A two year randomised controlled trial of the two types of review (initiated by patient or by rheumatologist) found that direct access was safe, cost effective, and appreciated,¹⁵ and findings were maintained at four years.¹⁶ To date, only short term effects of alternative access systems have been studied, but patients with chronic disease who do not have routine reviews may have long term physical consequences (they may not notice gradual physical changes that will go untreated) and therefore long term studies are required.

We extended the two year trial¹⁵ to six years to see whether such patients show an improvement in clinical and psychological outcome, reduce their overall use of healthcare resources, and have greater satisfaction with care compared with patients receiving traditional review initiated by a rheumatologist.



Two tables of extra data can be found on bmj.com

Methods

We originally invited consecutive patients who had had rheumatoid arthritis for more than two years and who were attending for routine outpatient reviews to participate in a two year randomised controlled trial, irrespective of clinical status. Randomisation was performed blind, using computer generated numbers concealed in envelopes prepared by an independent party. If patients agreed to participate we then sought consent from their general practitioners. Patients who took part in the two year study were afterwards invited to continue the study for a further four years.

Access to care

Patients in the group in which review was initiated by the patient (direct access) were not offered routine hospital reviews, and their general practitioners were given a short leaflet to support day to day management of patients. Patients (or general practitioners) arranged reviews with a rheumatologist, physiotherapist, or occupational therapist through a nurse-led telephone helpline. Fortnightly direct access clinics gave a maximum delay of 10 working days before appointments, though patients could receive immediate advice from a nurse.

Patients in the control group continued with traditional hospital reviews ordered by the rheumatologist every three to six months according to normal practice, and, as usual, requests for urgent reviews were made by general practitioners through the secretary and accommodated as quickly as possible. At each appointment patients in both groups were managed according to clinical need.

Outcome measures

Clinical status—Each year we assessed pain and the patients' opinion of disease activity (10 cm visual analogue scales), early morning stiffness, and disability (health assessment questionnaire)¹⁷ by postal questionnaires. At four, five, and six years we added a generic quality of life measure (SF-36).¹⁸ Every two years (baseline and two, four, and six years) we assessed plasma viscosity, C reactive protein, haemoglobin concentration, grip strength, range of movement (elbows and knees), and bony erosions (hand x ray films). Case notes were independently reviewed at two years (covering baseline to two years) and six years (covering four to six years) to assess complications of rheumatoid arthritis.

Psychological status—We also carried out annual postal assessments of anxiety and depression (hospital anxiety and depression scale),¹⁹ helplessness (arthritis helplessness index subscale),²⁰ self efficacy (arthritis self efficacy scales),²¹ and satisfaction with and confidence in the system (10 cm visual analogue scales).

Appointment use—We recorded all visits to hospital rheumatologists and visits to general practitioners for problems related to arthritis. During the two year study there was no difference between the groups in visits to occupational therapy and to physiotherapy¹⁵ so we did not measure these in the extension period.

Statistical analysis

The original two year randomised controlled trial was designed to show a difference of 12% in pain at 95% power ($n = 186$),²² and 182 datasets were completed.¹⁵ The extension to six years gave 120 completed datasets, which reduced the power to 81%. As most outcome measures had skewed distributions, we used medians, interquartile ranges (first and third), and non-parametric tests. We summarised differences between the two groups over time using both the median change from baseline to

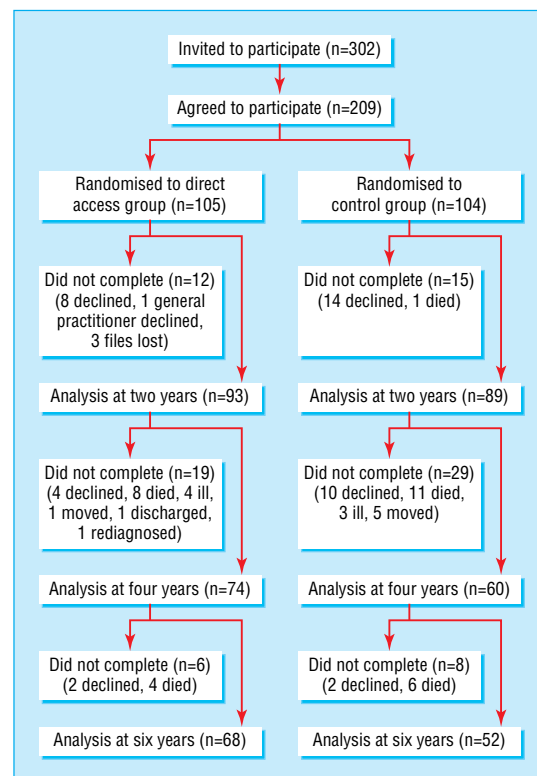


Fig 1 Study flowchart

six years and the area under the curve for repeated observations at baseline and at two, four, and six years (trapezoidal rule) and tested them with the Mann-Whitney U test (applying the Kruskal-Wallis test first when we compared multiple groups) with a two tailed significance at the 5% level. Seventy four patients had x ray films at baseline and six years (39 direct access, 35 controls) assessed by the Larsen index (sum of the 14 joint damage scores of each hand, plus two wrist scores weighted by 5).²³⁻²⁴ We used the Townsend deprivation score as a measure of socioeconomic status.²⁵

Results

Of 302 patients invited to participate, 209 agreed. Patients who declined were significantly older than those who participated (median 69 years *v* 58 years, $P < 0.05$) and more disabled (median score on health assessment questionnaire 2.2 *v* 1.5, $P < 0.05$). At six years 120 patients remained for analysis (68 (65%) in direct access group and 52 (50%) in control group, $P = 0.04$) (fig 1). Thirty patients died (12 in the direct access group and 18 in the control group). Using the last observation, we found no significant difference or strong directional trend for clinical or psychological outcomes between the groups for those who died. Because those who died were significantly older at baseline (median difference 10 years) and many outcomes were related to age, we excluded these patients from further comparison. The 59 surviving patients who did not complete the study (direct access 25, control 34) were similar at baseline to those who completed the study, differing only for longer duration of disease and less range of movement (table 1).

The 120 patients (direct access 68, control 52) who formed the final dataset differed at baseline only for stronger grip strength in the direct access group (table 1). The Townsend deprivation score²⁵ was not significantly different between groups

Table 1 Baseline characteristics (excluding deaths). Figures are medians (interquartile range) unless stated otherwise

	Did not complete study (n=59)		Completed study (n=120)				P value*
	No of patients	Median (IQ range)	Direct access group		Control group		
	No of patients	Median (IQ range)	No of patients	Median (IQ range)	No of patients	Median (IQ range)	
Age (years)	59	55 (46.0 to 66.0)	68	58.0 (48.3 to 65.0)	52	57.0 (48.3 to 66.0)	0.91
Disease duration (years)	43	13† (6.50 to 22.0)	65	7.0 (4.0 to 13.0)	51	10.0 (5.0 to 14.0)	0.01
% female	59	74.6%	68	66.2%	52	71.1%	0.58
Outcome measure scale							
Pain (0-10)‡	48	2.60 (1.50 to 4.90)	68	3.00 (1.73 to 5.58)	52	3.10 (1.42 to 4.80)	0.87
Early morning stiffness (0-1440 min)‡	48	22.5 (4.30 to 60.0)	68	30.0 (10.0 to 60.0)	52	30.0 (10.0 to 60.0)	0.49
CRP (<10-200 mg/l)‡	52	15.0 (10.0 to 26.8)	60	11.5 (10.0 to 22.8)	46	10.0 (10.0 to 19.5)	0.08
PV (1.5-2.7 mPa) ‡	52	1.74 (1.67 to 1.06)	61	1.73 (1.67 to 1.76)	48	1.73 (1.63 to 1.79)	0.12
Haemoglobin (50-170 g/l) §	53	124 (115 to 133)	61	125 (125 to 138)	48	125 (118 to 131)	0.28
Disability (HAQ) (0-3)‡	47	1.50 (1.00 to 2.25)	68	1.25 (0.625 to 1.875)	52	1.375 (0.625 to 1.875)	0.19
Grip strength (0-72 kg)§:							
Right hand	51	10.0 (8.0 to 18.0)	66	15.0†(9.5 to 26.5)	51	10.0 (8.0 to 20.0)	0.04
Left hand	52	10.0 (6.0 to 18.0)	66	18.0† (10.0 to 26.0)	51	10.0 (8.0 to 20.0)	0.0002
Range of movement (elbow 0-150°, knee 0-140°)§:							
Right elbow	53	120† (105 to 138)	67	133 (120 to 140)	51	137 (120 to 143)	0.007
Left elbow	54	125† (100 to 140)	67	135 (125 to 142)	51	137 (125 to 148)	0.02
Right knee	51	105† (87 to 120)	66	115 (105 to 123.3)	51	117 (105 to 124)	0.02
Left knee	52	113 (90 to 124)	66	119 (105 to 125)	51	115 (103 to 126)	0.17
Larsen index, both hands (0-190)‡	—	—	39	39 (21 to 68)	35	37 (5 to 55)	0.15
Anxiety (0-21)‡	47	6.0 (3.0 to 9.0)	68	7.0 (4.0 to 10.0)	52	7.0 (5.0 to 9.0)	0.40
Depression (0-21)‡	47	4.0 (3.0 to 7.0)	68	5.0 (2.0 to 7.0)	52	4.5 (2.0 to 7.8)	0.88
Helplessness (5-30)‡	47	18.0 (14.0 to 21.0)	68	16.5 (14.0 to 19.3)	52	16.0 (12.0 to 19.0)	0.21
Self efficacy (10-100)§:							
Pain	47	62.0 (44.0 to 76.0)	67	58.0 (46.0 to 70.0)	50	50.0 (34.0 to 66.2)	0.12
Function	46	62.0 (35.0 to 83.0)	66	67.3 (45.0 to 86.7)	50	62.2 (44.1 to 81.4)	0.45
Other	47	68.0 (47.0 to 82.0)	67	70.0 (53.3 to 80.0)	49	70.0 (50.9 to 80.0)	0.92
Satisfaction (0-10)§	46	8.8 (7.2 to 9.7)	62	8.9 (7.3 to 9.7)	50	8.9 (7.6 to 9.6)	0.99
Confidence (0-10)§	47	9.3 (8.4 to 9.6)	62	9.3 (8.0 to 9.6)	50	8.9 (6.7 to 9.5)	0.24

CRP=C reactive protein, PV=plasma viscosity, HAQ=health assessment questionnaire.

*Kruskal-Wallis test except for sex, where χ^2 used with Yates's correction on 2 df.

†Significant difference between the groups at 5% level.

‡Lower scores indicate better health.

§Higher scores indicate better health.

(median score -0.1 , (interquartile range -2.4 to 3.3) v -0.2 (-1.8 to 3.1), respectively).

Clinical outcome at six years—There were no significant differences between the groups in median change scores for clinical outcome (table 2), except for range of movement in the elbow, where the direct access group deteriorated less. Quality of life at four and six years was not significantly different between the groups, except for a greater deterioration in physical function in the direct access group (SF-36: direct access -5 , control 0, $P=0.04$, see table A on bmj.com), which was not shown in the disability measure specific for arthritis (health assessment questionnaire, table 2). Complications (respiratory or renal involvement, vasculitis, anaemia, drug reactions, gastrointestinal problems) and need for joint surgery were not significantly different between the groups (4 v 5 patients over baseline to two years and 16 v 17 patients over four to six years, $P=0.36$).

Psychological status and satisfaction with the system—There were no significant differences between the groups over the six years for median change in any of the psychological variables (table 2). There were no differences between the groups for satisfaction with and confidence in the traditional system of care at baseline (table 1), but both were significantly higher for the direct access system thereafter (fig 2), and at six years both had decreased by 10% in the control group (table 2). General practitioners' satisfaction and confidence in the system at six years was higher for direct access (satisfaction: 8.4 (7.5-9.6) v 7.5 (5.5-8.57),

$P=0.005$; confidence: 8.4 (7.25-9.45) v 8.0 (5.72-8.7), $P=0.04$). Clinical and psychological results were replicated in analysis according to area under the curve (see table B on bmj.com).

Appointments with rheumatologist and general practitioners—Direct access patients had 38% fewer hospital reviews over six years (median 8 (5-13) v 13 (11-17), $P<0.0001$) with 34% of direct access patients receiving more than 10 hospital reviews compared with 85% of control patients (fig 3). Fourteen direct access patients (21%) did not request an appointment during the first two years, 19 (28%) during years two to four, and 14 (21%) during years four to six. This includes three patients who did not request any appointments over the six years. During years four to six we recorded the intervals between patients' requests and subsequent appointments. These were not different between groups (direct access requested 166 appointments, median delay 6 days, 3-9; controls requested 10 additional appointments, median 8 days, 4.5-11.25). The number of visits to the general practitioner for consultations about arthritis was not significantly different between the groups over the six years (median 8, 3-20; v 9.5, 3-17).

Discussion

Patients using direct access for hospital review of their rheumatoid arthritis fare as well clinically and psychologically over six years as patients receiving traditional review initiated by a rheu-

Table 2 Median changes in outcome from baseline to six years

Measurement*	Direct access group		Control group		P value*
	No of patients	Median change (IQ range)	No of patients	Median change (IQ range)	
Clinical measures					
Pain (0-10)†	68	1.25 (-0.40 to 3.25)	52	1.1 (-1.00 to 3.60)	0.91
Disease activity (0-10)†	68	0.25 (-1.35 to 2.80)	52	0.25 (-0.88 to 2.80)	0.49
Early morning stiffness (0-1440 mins)†	68	0 (-10.0 to 33.0)	52	5.0 (-15.0 to 20.0)	0.80
CRP (<10-200 mg/l)†	58	-0.95 (-12.0 to 20.5)	39	-3.00 (-8.4 to 3.0)	0.62
PV (1.5-2.7 mPa)†	58	0.07 (-0.01 to 0.14)	42	0.07 (-0.04 to 0.16)	0.78
Haemoglobin (50-170 g/l)‡	59	0 (-6 to 9)	44	2 (-5.5 to 7.8)	0.39
Disability (HAQ) (0-3)†	68	0.19 (-0.125 to 0.75)	51	0.25 (0 to 0.75)	0.39
Grip strength (0-72 kg)‡:					
Right hand	65	-4.0 (-10 to 0)	49	-2.0 (-5.5 to 2.0)	0.13
Left hand	65	-4.0 (-10 to 0)	49	-1.0 (-7.0 to 0)	0.07
Range of movement (elbow 0-150°, knee 0-140°)‡:					
Right elbow	63	-17.0§ (-35.0 to 0)	50	-25.5 (-40.5 to -14.5)	0.04
Left elbow	63	-15.0§ (-25.0 to 0)	50	-24.5 (-40.3 to -4.0)	0.02
Right knee	62	-4.0 (-20.0 to 7.0)	47	-8.0 (-30.0 to 7.0)	0.60
Left knee	62	-5.0 (-20.0 to 5.0)	46	-8.5 (-26.3 to -8.5)	0.65
Larsen index, both hands (0-190)†	39	14 (0 to 27)	35	9 (2 to 23)	0.69
Psychological measures					
Anxiety (0-21)†	68	0 (-2.0 to 3.0)	52	0 (-2.0 to 3.0)	0.95
Depression (0-21)†	68	0 (-1.0 to 3.0)	52	0 (-1.0 to 2.75)	0.80
Helplessness (5-30)†	66	0.5 (-3.0 to 3.0)	52	1.0 (-1.75 to 4.0)	0.20
Self efficacy (10-100)‡:					
Pain	67	2.0 (-12.0 to 16.0)	50	1.0 (-10.0 to 19.0)	0.49
Function	66	-2.75 (-15.9 to 5.0)	50	-6.6 (-20.6 to 2.40)	0.19
Other	67	-3.30 (-11.6 to 8.3)	49	-6.7 (-15.0 to 6.7)	0.25
Satisfaction (0-10)‡	62	0§ (-0.7 to 0.9)	49	-1.1 (-2.70 to 0.25)	0.0004
Confidence (0-10)‡	62	-0.15§ (-0.73 to 0.43)	49	-1.0 (-2.35 to 0.20)	0.0005

*Mann Whitney U test.
 †Lower scores indicate better health.
 ‡Higher scores indicate better health.
 §Significant difference between two groups at 5% level.

matologist, but use fewer appointments and are more satisfied with and confident in their system of care.

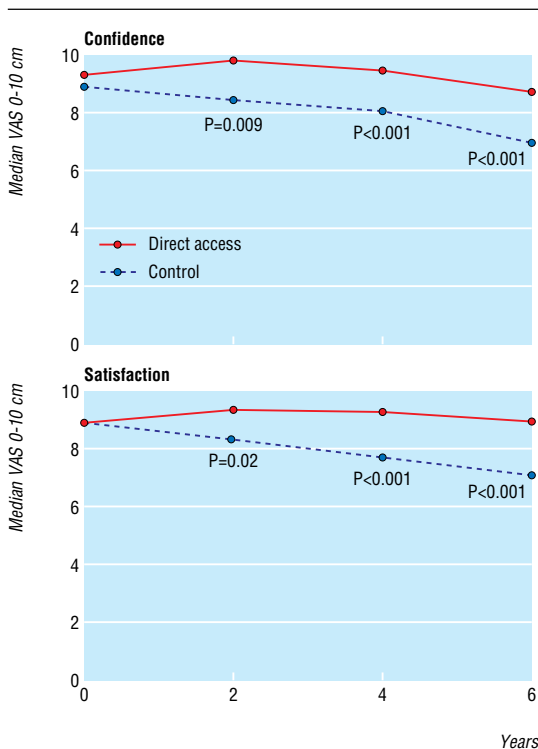


Fig 2 Patients' confidence and satisfaction in the system

Limitations

The 93 patients who declined to participate were older and had greater disability, possibly suggesting that such patients may be less amenable to change (data not collected). After randomisation more control than direct access patients withdrew, and repeated questionnaires and research visits in the absence of perceived benefit may have been a disincentive to those in the control group. Patients who withdrew had had rheumatoid arthritis for longer and less range of movement at baseline, but outcome data available at two years showed no major differences compared with those who completed the study (data not shown).

Changes in clinical and psychological outcomes in those using direct access were no different over six years to changes in patients using traditional reviews initiated by a rheumatologist. Range of movement in the elbow deteriorated less in the direct access group but goniometry measurements can be imprecise.

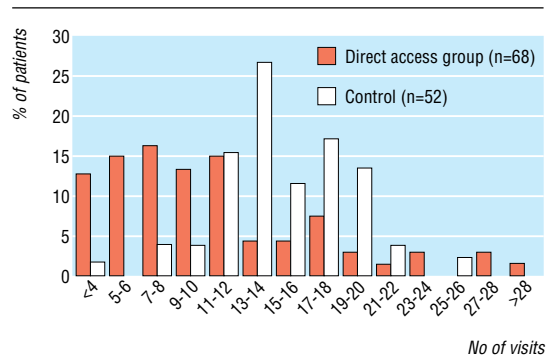


Fig 3 Hospital rheumatologist appointments over six years

The complication rate was not significantly different between groups, but the number of complications and need for surgery seemed to increase in both groups during the latter part of the study, perhaps because by then patients had had the disease for longer or because different assessors had to be used at the two time points. Patients' satisfaction and confidence were high for both systems but diminished in patients in the control group over the six years.

Direct access patients had 38% fewer appointments with a rheumatologist than patients in the control group. Some direct access patients requested few or even no appointments, and the research visits at two, four, and six years may have acted as a safety net for them. In the clinical direct access service established in our trust after this trial, patients who have not requested an appointment in the previous two years are reviewed by a nurse specialist. After excluding pure research visits from our data, we calculate that an average of 11% of direct access patients each year will not request a review. Some costs are needed to set the service up (organising education of patients, helpline, nurse reviews, general practitioner guidelines, appointment systems), but in the longer term, resources released by fewer appointments with a rheumatologist should offset this initial investment.

The power of the study inevitably declined over six years, but overall, out of 22 outcomes, 12 were more favourable for direct access patients (four significantly) compared with only six favouring control patients (none significantly). It is possible that with a larger population of patients completing to six years, some of these borderline differences might have reached significance, and those seen at two years (pain and self efficacy)¹⁵ might have been maintained.

Blinding of patients, the physician, and assessors to group allocation was not possible, giving the potential for bias. The study patients, however, formed a minority of the physician's caseload, and it is unlikely that a systematically different approach to these 120 patients was maintained for six years, while the use of a single physician minimised the confounding variable of differing clinical management. Patients and assessors completed validated standardised outcome measures and would be unlikely to be able to maintain a consistent bias.

Differences to other studies

This study differs importantly from others in that it uses direct access to replace rather than complement routine review and the key point of access is clinical, not administrative. It shows potential resource savings rather than transferring resources to primary care, and the results can be maintained without clinical detriment in the long term. Forthcoming analyses will address other important questions, including the timing and efficacy of appointments by using additional clinical data collected during years four to six, and assessing missed clinical need by analysing a combined review from the occupational therapist and physiotherapist of a random sample of patients at six years.

This trial used consecutive patients with rheumatoid arthritis and should therefore be generalisable, but local issues (patients, staff, administrative) may influence systems and outcomes, therefore a multi-centre study with various hospital settings is needed to ascertain the generalisability of direct access. Other research could explore the altered roles of general practitioners, hospital physicians,²⁶ patients, and nurses in management of chronic disease.

Conclusions

The traditional system of routine hospital follow up in chronic disease is a drain on NHS resources and a burden for patients if

What is already known on this topic

Follow up for patients with chronic disease is generally life long, hospital based, and medically driven

Often the patient is well at review but unable to access support rapidly when it is required

General practitioners view rapid specialist access as more important than regular specialist review

What this study adds

In rheumatoid arthritis, replacing traditional reviews with access initiated by the patient is not clinically detrimental and could be advantageous

Up to 38% fewer hospital medical appointments are used, and patients and general practitioners prefer the system

they are well. Direct access initiated by patients challenges the traditional view that medically driven regular hospital review is required and reduces the volume of perhaps unnecessary reviews, while targeting them to support clinical need and reflect the NHS commitment to the "expert patient."²⁸ If this system was instigated on a large scale, the resources released could be used to improve care in other ways (for example, by reducing waiting times for new patients) or to increase the overall throughput of outpatients (by supporting up to a third more patients). Furthermore, this model could be tested in other chronic inflammatory illnesses that encompass a degree of self management, such as asthma, diabetes, and inflammatory bowel disease.

We thank Susan Tipler (nurse specialist managing the helpline), Julie Haynes (research sister, years one and two), Wendy Harrison (clinic coordinator), and Sarah Browning (project secretary). We are grateful to Gina Ludlum (occupational therapist), Petra Allerston (physiotherapist), Shelagh Snow, and Vanessa Lock (research sisters) for reviewing patients and case notes, and to Ben Bennett (trust manager) for administrative advice. In particular we thank the patients, without whom the study could not have taken place.

Contributors: SH and JK initiated the original study and together with JP and DM initiated the extension. The trial steering group comprised SH, JK, JP, DM, KM, and MH. SH supervised the study management, KM and MH collected the data, MGP reviewed data, and PSB and SH analysed the data. All authors participated in discussing the results and in writing and editing successive drafts of the paper. SH and JK are guarantors.

Funding: SH is funded by the Arthritis Research Campaign; JK and PSB are funded by the University of Bristol; JP is funded by the University of the West of England; KM and MH were funded by the NHS research and development programme; DM's research general practice is funded by the Department of Health research and development support for NHS providers and MGP was funded by the United Bristol Health Care Trust Special Trustees.

Competing interests: None declared.

Ethical approval: Local research ethics committee approval was given for the original two year trial and the subsequent four year extension.

- 1 Hehir M, Hewlett S, Mitchell K, Kirwan J, Memel D, Pollock J, et al. What happens in RA outpatient clinics? *Rheumatology* 2001;40:S146.
- 2 Dickson DJ. What do general practitioners expect from rheumatology clinics? *Br J Rheumatol* 1996;35:920.
- 3 Reeve H, Baxter K, Newton P, Burkey Y, Black M, Roland M. Long-term follow-up in outpatient clinics. 1: The view from general practice. *Fam Pract* 1997;14:24-8.
- 4 Schulpen GJC, Vierhout SPM, Van Der Heijde DM, Landewe RB, Winkens RAG, Winkens AMK, et al. Patients at the outpatient rheumatology clinic: do they really need to be there? *Eur J Intern Med* 2003;14:158-61.
- 5 Damme R van, Drummond N, Beattie J, Douglas G. Integrated care of patients with asthma: views of general practitioners. *Br J Gen Pract* 1994;44:9-13.
- 6 Mowat AG, Nichols PJ, Hollings EM, Haworth RJ, Aitken LC. A comparison of follow-up regimens in RA. *Ann Rheum Dis* 1980;39:12-7.
- 7 Faulkner A, Frankel S. *Evaluation of delivery and use of outpatient services*. Bristol: Health Care Evaluation Unit, University of Bristol, 1993:48-54.

Papers

- 8 Department of Health. *The expert patient: a new approach to chronic disease management for the 21st century*. London: Department of Health, 2001.
- 9 Williams J, Cheung W, Russell I, Cohen D, Longo M, Lervy B. Open access follow-up for inflammatory bowel disease: pragmatic randomised trial and cost effectiveness study. *BMJ* 2000;320:544-8.
- 10 Robinson A, Thompson D, Wilkin D, Roberts C. Guided self-management and patient-directed follow-up of ulcerative colitis: a randomised trial. *Lancet* 2001;358:976-81.
- 11 Pincus T, Callahan L. The side effects of rheumatoid arthritis: destruction, disability and early mortality. *Br J Rheumatol* 1993;32:28-37.
- 12 Kirwan JR, Snow S. Which patients see a rheumatologist? *Br J Rheumatol* 1991;30:285-7.
- 13 Kirwan JR for the former South West Regional Advisory Committee for rheumatology. Rheumatology outpatient workload increases inexorably. *Br J Rheumatol* 1997;36:481-6.
- 14 Symmons D, Bankhead C. *Health care needs assessment for musculoskeletal diseases: the first step—estimating the number of incident and prevalent cases*. Chesterfield: Arthritis Research Campaign, 2002.
- 15 Hewlett S, Kirwan JR, Mitchell K, Hogg J, Korendovych E, Paine T. Patient-initiated hospital follow-up for rheumatoid arthritis. *Rheumatology* 2000;39:990-7.
- 16 Kirwan JR, Mitchell K, Hewlett S, Hehir M, Pollock J, Memel D, et al. Clinical and psychological outcome from a randomised controlled trial of patient-initiated direct access hospital follow-up for rheumatoid arthritis extended to 4 years. *Rheumatology* 2002;42:422-6.
- 17 Fries JF, Spitz P, Kraines RG, Holman HR. Measurement of patient outcome in arthritis. *Arth Rheum* 1980;23:137-45.
- 18 Ware J, Sherbourne C. The MOS 36 item short form health survey (SF-36). *Med Care* 1992;30:473-83.
- 19 Zigmond AS, Snaith RP. The hospital anxiety and depression scale. *Acta Psychiatr Scand* 1983;67:361-70.
- 20 Stein MJ, Wallston KA, Nicassio PM. Factor structure of the arthritis helplessness index. *J Rheumatol* 1988;15:427-32.
- 21 Lorig K, Chastain R, Ung E, Shoor S, Holman H. Development and evaluation of a scale to measure perceived self-efficacy in people with arthritis. *Arth Rheum* 1989;32:37-44.
- 22 Bellamy N. Standardised procedures for outcome measurement and parameters for calculating sample size for anti-rheumatic drugs. In: Bellamy N. *Musculoskeletal clinical metrology*. London: Kluwer, 1993.
- 23 Larsen A, Dale K, Eek M. Radiographic evaluation of rheumatoid arthritis and related conditions by standard reference films. *Acta Radiol (Diagn)* 1977;18:48-91.
- 24 Kirwan JR. Using the Larsen index to assess radiographic progression in rheumatoid arthritis. *J Rheumatol* 2000;27:264-8.
- 25 Dolan SA, Jarman B, Bajekal M, Davies PM, Hart D. Measuring disadvantage: changes in the underprivileged area: Townsend and Carstairs scores 1981-1991. *J Epidemiol Community Health* 1995;49:S30-3.
- 26 Memel DS, Somerset M. General practitioner and specialist care: the perceptions of people with rheumatoid arthritis. *Primary Health Care Research and Development* 2003;4:29-37.

(Accepted 27 September 2004)

doi 10.1136/bmj.38265.493773.8F

University of Bristol Academic Rheumatology Unit, Bristol Royal Infirmary, Bristol BS2 8HW

Sarah Hewlett *senior lecturer*John Kirwan *reader*Kathryn Mitchell *research sister*Maggie Hehir *research sister*Mark G Perry *research fellow*

Faculty of Health and Social Care, University of the West of England, Bristol BS16 1DD

Jon Pollock *principal lecturer in epidemiology*

University of Bristol Institute of Child Health, UBHT Education Centre, Bristol Royal Infirmary, Bristol

Peter S Blair *medical statistician*

Air Balloon Surgery, Bristol BS5 7PD

David Memel *lead research general practitioner*

Correspondence to: S Hewlett Sarah.Hewlett@bristol.ac.uk