



# THE UNIVERSITY *of* EDINBURGH

## Edinburgh Research Explorer

### Limited genetic divergence between dog breeds from geographically isolated countries

**Citation for published version:**

Summers, KM, Ogden, R, Clements, DN, French, AT, Gow, AG, Powell, R, Corcoran, B, Mellanby, RJ & Schoeman, JP 2014, 'Limited genetic divergence between dog breeds from geographically isolated countries' *Veterinary Record*, vol. 175, no. 22, 562. DOI: 10.1136/vr.102739

**Digital Object Identifier (DOI):**

[10.1136/vr.102739](https://doi.org/10.1136/vr.102739)

**Link:**

[Link to publication record in Edinburgh Research Explorer](#)

**Document Version:**

Publisher's PDF, also known as Version of record

**Published In:**

*Veterinary Record*

**Publisher Rights Statement:**

This is an Open Access article distributed in accordance with the Creative Commons Attribution Non Commercial (CC BY-NC 4.0) license, which permits others to distribute, remix, adapt, build upon this work non-commercially, and license their derivative works on different terms, provided the original work is properly cited and the use is non-commercial. See: <http://creativecommons.org/licenses/by-nc/4.0/>

**General rights**

Copyright for the publications made accessible via the Edinburgh Research Explorer is retained by the author(s) and / or other copyright owners and it is a condition of accessing these publications that users recognise and abide by the legal requirements associated with these rights.

**Take down policy**

The University of Edinburgh has made every reasonable effort to ensure that Edinburgh Research Explorer content complies with UK legislation. If you believe that the public display of this file breaches copyright please contact [openaccess@ed.ac.uk](mailto:openaccess@ed.ac.uk) providing details, and we will remove access to the work immediately and investigate your claim.





OPEN ACCESS

# Short Communication

## Limited genetic divergence between dog breeds from geographically isolated countries

**K. M. Summers, R. Ogden, D. N. Clements, A. T. French, A. G. Gow, R. Powell, B. Corcoran, R. J. Mellanby, J. P. Schoeman**

BREED specifications for pure-bred/pedigree dogs are laid down by the organisations that register and judge dogs, such as the Kennel Club of the UK (KCUK) and the Kennel Union of South Africa (KUSA), as well as the umbrella body the Fédération Cynologique Internationale (FCI). Reproductive isolation between breeds results because animals can only be registered as a specific breed if they have five previous generations of ancestors registered as the same breed, creating a 'breed barrier' which promotes genetic differences among breeds. This genetic isolation in a population of UK dogs (Mellanby and others 2013) has been demonstrated previously. The lowest heterozygosities of around 0.5 were found for breeds such as the German shepherd dog, rottweiler and boxer dog, indicative of a reasonably high level of inbreeding. Labrador retrievers and border collies had heterozygosities of around 0.7, indicating greater genetic diversity. The Jack Russell terrier is not a registered breed with the KCUK. This group had a heterozygosity of close to 0.8 and maintained a high degree of genetic variability.

The authors were interested to assess whether dog breeds in another country had similar levels of genetic isolation. Three

popular breeds were chosen, which showed differing heterozygosities in the UK: the German shepherd dog, the labrador retriever and the Jack Russell terrier (Mellanby and others 2013). Breed specifications for the labrador retriever were identical for the KCUK and the KUSA, whereas the specification for the German shepherd dog in South Africa is taken from the FCI criteria rather than the KCUK criteria which are very similar. The Jack Russell is not a KCUK-registered breed (Mellanby and others 2013) but is registered with the KUSA, conforming to the breed standard of the Australian National Kennel Council. Therefore, it might be expected to show less genetic diversity in South Africa due to the need to conform to breed specifications. Breed standards are available at <https://www.thekennelclub.org.uk/services/public/breed/Default.aspx> and <http://www.kusa.co.za/index.php/documents/breed-standards>.

Genotypes using 15 microsatellite markers were established for 14 labrador retrievers, 26 German shepherd dogs and 35 Jack Russell terriers from South Africa, using the previously published protocol (Ogden and others 2011, Mellanby and others 2013). Calculations of heterozygosity and relative genetic distance were performed as described (Mellanby and others 2013). Table 1 shows the calculated heterozygosities and genetic distance for the animals from South Africa, compared with the results for UK dogs. Heterozygosities did not differ between countries, but the pairwise  $F_{ST}$  values were lower for South African dogs, indicating that the UK dogs have experienced greater genetic isolation (an  $F_{ST}$  of 1 indicates complete isolation). Other studies also using microsatellites have achieved comparable heterozygosities. For example, Irion and others (2003) found heterozygosities of 0.64 and 0.78 for labrador retrievers and Jack Russell terriers, respectively, based on 100 microsatellite markers, and Leroy and others (2009) observed heterozygosities of 0.56 and 0.60 for German shepherd dogs and labrador retrievers, respectively. Wade (2011) reported heterozygosity of 0.31 in labrador retrievers using single nucleotide polymorphism (SNP) markers (unknown number). The lower heterozygosity with SNP markers is consistent with the biallelic nature of SNPs which reduces the maximum possible heterozygosity for each SNP to 0.5, compared with the multiallelic microsatellite markers used here with maximum heterozygosity ranging from 0.84 (six alleles) to 0.95 (20 alleles).

The software STRUCTURE (Pritchard and others 2000) was then used to identify the mixture of ancestral groups in each dog. This program uses genotype data from many loci to investigate population structure. Results allow the inference of distinct populations within an admixed group. In each STRUCTURE run the number of population subgroups (K) is specified and runs are repeated at increasing values of K until no further substructure is detected. The lowest value of K which detects all

Veterinary Record (2014)

doi: 10.1136/vr.102739

**K. M. Summers**, BSc, PhD  
**D. N. Clements**, BSc, BVSc, DSAM

(Orth), DipECVS, PhD, MRCVS

**A. G. Gow**, BVM&S, DSAM,

DipECVIM-CA, MRCVS

**B. Corcoran**, MVB, DipPharm, PhD,

MRCVS

**R. J. Mellanby**, BSc, BVMS, PhD,

DSAM, DipECVIM-CA, MRCVS

The Roslin Institute and The Royal

(Dick) School of Veterinary Studies,

University of Edinburgh, Easter Bush,

Midlothian EH25 9RG, UK

**R. Ogden**, BSc, PhD

WildGenes Laboratory, Royal Zoological

Society of Scotland, Edinburgh EH12

6TS, UK

**A. T. French**, MVB, PhD, CertSAM,

DVC, DipECVIM-CA(Cardiology),

MRCVS, FHEA

Small Animal Hospital, University of

Glasgow, Bearsden Road, Glasgow

G61 1QH, UK

**R. Powell**, MA, VetMB, DipRCPath,

DipACVP, FRCPath, MRCVS

Powell Torrance Diagnostic Services,

Manor Farm Business Park, Higham

Gobion, Hertfordshire SG5 3HR, UK

**J. P. Schoeman**, BVSc, MMedVet

(Med), PhD, DSAM, DECVIM, MRCVS

Department of Companion Animal

Clinical Studies, Faculty of Veterinary

Science, University of Pretoria,

Onderstepoort 0110, Republic of

South Africa

E-mail for correspondence:

[kim.summers@roslin.ed.ac.uk](mailto:kim.summers@roslin.ed.ac.uk)

Provenance: Not commissioned;

externally peer reviewed

Accepted September 16, 2014

**TABLE 1: Estimated heterozygosities ( $H_E$ ) and genetic distances ( $F_{ST}$ ) for South African dogs**

Breed	$H_E^*$	$F_{ST}^*$ with	
		Jack Russell terrier	Labrador retriever
Jack Russell terrier	0.76 (0.76)		
Labrador retriever	0.68 (0.68)	0.042 (0.064)	
German shepherd dog	0.57 (0.54)	0.087 (0.153)	0.106 (0.201)

$H_E$  is a measure of the genetic diversity in the population; a high  $H_E$  value indicates that many individuals are heterozygous at many loci, consistent with a low level of inbreeding.  $F_{ST}$  is an estimate of the genetic differentiation between two populations. A high value indicates that the two populations are genetically isolated. Values were calculated using the programme GENALEX (Peakall and Smouse 2006).

\*Values in brackets for UK dogs (from Mellanby and others 2013).

## Short Communication

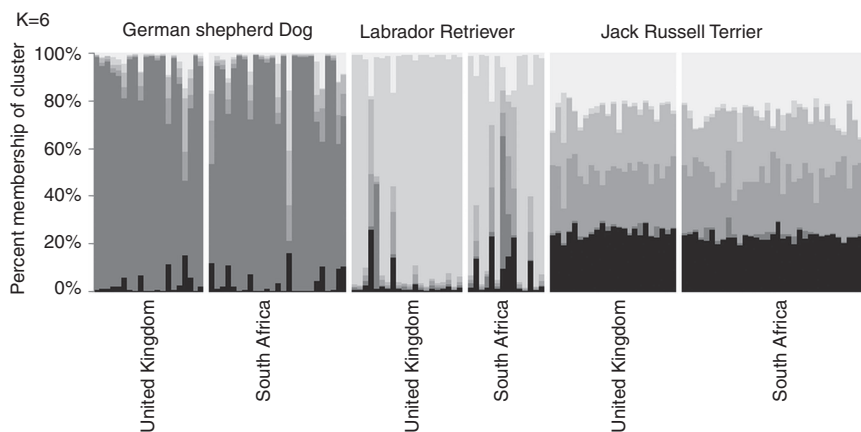


FIG 1: STRUCTURE analysis of three dog breeds from the UK and South Africa. Genotypes for 15 microsatellites for dogs of all three breeds from South Africa and the UK were entered into the program STRUCTURE and the analysis run with a burn-in period of 100,000 replications and a run of 500,000 replications (Mellanby and others 2013). Runs were repeated between two and five times for each value of K to assess the stability of the population structure detected. The results are shown for a typical run with K=6. Each vertical column represents a different dog, whereas the shades of grey represent six different subpopulations in the admixture. The y axis shows the proportional of the genotype attributed to each subpopulation for each dog

subpopulations is a measure of the number of population subgroups in the data set. Analyses were run as described (Mellanby and others 2013) using the results for 15 microsatellite markers, and both South African dogs and the UK dogs previously reported by Mellanby and others (2013) were included. Fig 1 shows the outcome of this analysis when K (number of contributing subpopulations) was set at 6. The result was the same with higher values of K. This analysis showed that within a breed the dogs were genetically very similar regardless of the country. Jack Russell terriers showed equal contributions from different subpopulations, whereas labrador retrievers and German shepherd dogs each showed 90 per cent contribution from a single subpopulation. Jack Russell terriers had very little contribution from either of the subpopulations predominant in

the labrador retrievers or German shepherd dogs, as might be expected given the very different phenotype and ancestry of these dogs. The admixture of subpopulations within a breed was the same regardless of country, showing that the breeds have not diverged greatly. To further test this, each breed was subjected individually to STRUCTURE analysis. There was no evidence of stratification based on country of origin at K=2 or higher K values (Fig 2). As previously reported (Mellanby and others 2013), misclassification of dog breed was common with four of the South African labrador retrievers and one of the German shepherd dogs showing mixed breed ancestry, whereas several others had a 50 per cent contribution from one subpopulation suggesting a one parent of the associated breed and one of another breed or mixed breed background.

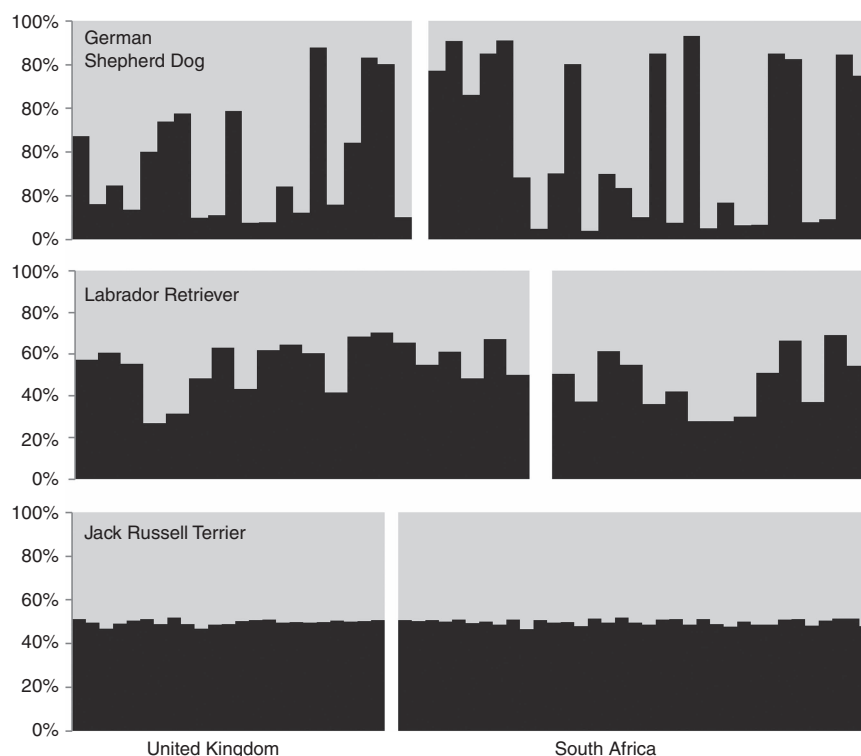


FIG 2: STRUCTURE analysis within dog breeds from the UK and South Africa. The input data were the same as for Fig 1, but the input contained only the results for a single breed. Burn-in, run and replications were the same as for Fig 1. Results are shown for K=2. The relative proportion of each population in each dog is shown in dark and light grey.; the outcome was similar for higher values of K

This analysis shows that the assignment of dogs to pedigree classes on the basis of genotype is robust across the two countries and there is little evidence for genetic drift within breeds, reflecting the similarity of the breed standards between the two countries. This may be maintained by the import of dogs from other countries and the exchange of semen for artificial insemination. Artificial insemination from cryopreserved domestic dog semen has been available since the 1960s (Thomassen and Farstad 2009) and use of artificial insemination has increased among pedigree dog breeders as technologies have developed to preserve and transport semen. Although this could benefit the breed and enhance genetic diversity by varying the sires used by a breeder, it is also seen as a cost-effective method to maximise the number of progeny of popular sires (Thomassen and Farstad 2009), hence restricting the gene pool. Worldwide use of semen from a small number of sires may have the effect of maintaining the homogeneity of the breed across geographically separated regions. The heterozygosity of the Jack Russell has been maintained in South Africa, indicating that registration as a breed and the need to conform to breed standard has not reduced genetic diversity at this point.

Thus, the geographical isolation of the two countries has not apparently led to genetic divergence within the breeds examined, suggesting that there is minimal reproductive isolation and considerable genetic exchange. Consequently, an important implication of this study is that genetic diseases detected in a breed (Asher and others 2009, Summers and others 2010) are likely to be found in both countries and could be transmitted from founders in either country, exacerbated by the use of artificial insemination, limiting the number of sires.

### Acknowledgements

The authors would like to thank the owners of the dogs included in this study for agreeing to participate. This study was partly funded by a Clinical Pump Priming Grant from the Roslin Institute to DNC, RJM, KMS, JPS, Mark Bronsvort and Andreas Lengeling, a grant from Petsavers to RJM and DNC and a Genesis-Faraday SPARK award to RO, RJM, DNC and Ross McEwing. The Roslin Institute is supported by BBSRC Institute Strategic Grant funding.

**Open Access** This is an Open Access article distributed in accordance with the Creative Commons Attribution Non Commercial (CC BY-NC 4.0) license, which permits others to distribute, remix, adapt, build upon this work non-commercially, and license their derivative works on different terms, provided the original work is properly cited and the use is non-commercial. See: <http://creativecommons.org/licenses/by-nc/4.0/>

### References

- ASHER, L., DIESEL, G., SUMMERS, J. E., MCGREEVY, P. D. & COLLINS, L. M. (2009) Inherited defects in pedigree dogs. Part 1: disorders related to breed standards. *Veterinary Journal* **182**, 402–411
- IRION, D.N., SCHAEFFER, A.L., FAMULA, TR., EGGLESTON, M.L., HUGHES, S.S. & PEDERSEN, N.C. (2003) Analysis of genetic variation in 28 pedigree dog breed populations with 100 microsatellite markers. *The Journal of Heredity* **94**, 81–87
- LEROY, G., VERRIER, E., MERIAUX, J.C. & ROGNON, X. (2009) Genetic diversity of dog breeds: within-breed diversity comparing genealogical and molecular data. *Animal Genetics* **40**, 323–332
- MELLANBY, R. J., OGDEN, R., CLEMENTS, D. N., FRENCH, A. T., GOW, A. G., POWELL, R., CORCORAN, B., SCHOEMAN, J. P. & SUMMERS, K. M. (2013) Population structure and genetic heterogeneity in popular dog breeds in the UK. *Veterinary Journal* **196**, 92–97
- OGDEN, R., MELLANBY, R. J., CLEMENTS, D., GOW, A. G., POWELL, R. & MCEWING, R. (2011) Genetic data from 15 STR loci for forensic individual identification and parentage analyses in UK domestic dogs (*Canis lupus familiaris*). *Forensic Science International. Genetics* **6**, e63–e65
- PEAKALL, R. & SMOUSE, P.E. (2006) GENALEX6: genetic analysis in Excel. Population genetic software for teaching and research. *Molecular Ecology Notes* **6**, 288–295
- PRITCHARD, J. K., STEPHENS, M. & DONNELLY, P. (2000) Inference of population structure using multilocus genotype data. *Genetics* **155**, 945–959
- SUMMERS, J. E., DIESEL, G., ASHER, L., MCGREEVY, P. D. & COLLINS, L. M. (2010) Inherited defects in pedigree dogs. Part 2: Disorders that are not related to breed standards. *Veterinary Journal* **183**, 39–45
- THOMASSEN, R. & FARSTAD, W. (2009) Artificial insemination in canids: a useful tool in breeding and conservation. *Theriogenology* **71**, 190–199
- WADE, C.M. (2011) Inbreeding and genetic diversity in dogs: results from DNA analysis. *Veterinary Journal* **189**, 183–188



CrossMark

## Limited genetic divergence between dog breeds from geographically isolated countries

K. M. Summers, R. Ogden, D. N. Clements, A. T. French, A. G. Gow, R. Powell, B. Corcoran, R. J. Mellanby and J. P. Schoeman

*Veterinary Record* 2014 175: 562 originally published online October 20, 2014

doi: 10.1136/vr.102739

---

Updated information and services can be found at:

<http://veterinaryrecord.bmj.com/content/175/22/562.2>

---

*These include:*

### References

This article cites 10 articles, 2 of which you can access for free at:  
<http://veterinaryrecord.bmj.com/content/175/22/562.2#BIBL>

### Open Access

This is an Open Access article distributed in accordance with the Creative Commons Attribution Non Commercial (CC BY-NC 4.0) license, which permits others to distribute, remix, adapt, build upon this work non-commercially, and license their derivative works on different terms, provided the original work is properly cited and the use is non-commercial. See: <http://creativecommons.org/licenses/by-nc/4.0/>

### Email alerting service

Receive free email alerts when new articles cite this article. Sign up in the box at the top right corner of the online article.

---

### Topic Collections

Articles on similar topics can be found in the following collections

[Open access](#) (59)

---

### Notes

---

To request permissions go to:

<http://group.bmj.com/group/rights-licensing/permissions>

To order reprints go to:

<http://journals.bmj.com/cgi/reprintform>

To subscribe to BMJ go to:

<http://group.bmj.com/subscribe/>