



THE UNIVERSITY *of* EDINBURGH

Edinburgh Research Explorer

Vascular endothelial growth factor restores delayed tumor progression in tumors depleted of macrophages

Citation for published version:

Lin, EY, Li, J, Bricard, G, Wang, W, Deng, Y, Sellers, R, Porcelli, SA & Pollard, JW 2007, 'Vascular endothelial growth factor restores delayed tumor progression in tumors depleted of macrophages' *Molecular Oncology*, vol 1, no. 3, pp. 288-302., 10.1016/j.molonc.2007.10.003

Digital Object Identifier (DOI):

[10.1016/j.molonc.2007.10.003](https://doi.org/10.1016/j.molonc.2007.10.003)

Link:

[Link to publication record in Edinburgh Research Explorer](#)

Document Version:

Author final version (often known as postprint)

Published In:

Molecular Oncology

Publisher Rights Statement:

Published in final edited form as:
Mol Oncol. 2007 December; 1(3): 288–302.
doi: 10.1016/j.molonc.2007.10.003

General rights

Copyright for the publications made accessible via the Edinburgh Research Explorer is retained by the author(s) and / or other copyright owners and it is a condition of accessing these publications that users recognise and abide by the legal requirements associated with these rights.

Take down policy

The University of Edinburgh has made every reasonable effort to ensure that Edinburgh Research Explorer content complies with UK legislation. If you believe that the public display of this file breaches copyright please contact openaccess@ed.ac.uk providing details, and we will remove access to the work immediately and investigate your claim.





Published in final edited form as:

Mol Oncol. 2007 December ; 1(3): 288–302.

VEGF Restores Delayed Tumor Progression in Tumors Depleted of Macrophages

Elaine Y. Lin^b, Jiu-feng Li^a, Gabriel Bricard^c, Weigang Wang^d, Yan Deng^e, Rani Sellers^f, Steven A. Porcelli^c, and Jeffrey W. Pollard^{a,1}

^aDepartment of Developmental and Molecular Biology, Albert Einstein Cancer Center, Albert Einstein College of Medicine, Bronx, NY 10461, USA

^bMedicine, Oncology Division, Albert Einstein Cancer Center, Albert Einstein College of Medicine, Bronx, NY 10461, USA

^cImmunology and Microbiology, Albert Einstein Cancer Center, Albert Einstein College of Medicine, Bronx, NY 10461, USA

^dAnatomy and Structural Biology, Albert Einstein Cancer Center, Albert Einstein College of Medicine, Bronx, NY 10461, USA

^eAnalytical and Imaging Facility, Albert Einstein Cancer Center, Albert Einstein College of Medicine, Bronx, NY 10461, USA

^fPathology, Center of Reproductive Biology and Women's Health, Albert Einstein Cancer Center, Albert Einstein College of Medicine, Bronx, NY 10461, USA

Abstract

Genetic depletion of macrophages in Polyoma Middle T oncoprotein (PyMT)-induced mammary tumors in mice delayed the angiogenic switch and the progression to malignancy. To determine whether Vascular Endothelial Growth Factor A (VEGF-A) produced by tumor-associated macrophages regulated the onset of the angiogenic switch a genetic approach was used to restore expression of VEGF-A into tumors at the benign stages. This stimulated formation of a high-density vessel network and in macrophage-depleted mice, this was followed by accelerated tumor progression. The expression of VEGF-A led to a massive infiltration into the tumor of leukocytes that were mostly macrophages. This study suggests that macrophage produced VEGF regulates malignant progression through stimulating tumor angiogenesis, leukocytic infiltration and tumor cell invasion.

Keywords

VEGF; macrophages; mammary; tumor; angiogenesis; malignancy; mouse; PyMT; progression; transgenic

¹Jeffrey W. Pollard, 607 Chanin Bldg., Albert Einstein College of Medicine, 1300 Morris Park Ave., Bronx, NY 10461. Tel.: 718-430-2090. E-mail: pollard@aecom.yu.edu

Publisher's Disclaimer: This is a PDF file of an unedited manuscript that has been accepted for publication. As a service to our customers we are providing this early version of the manuscript. The manuscript will undergo copyediting, typesetting, and review of the resulting proof before it is published in its final citable form. Please note that during the production process errors may be discovered which could affect the content, and all legal disclaimers that apply to the journal pertain.

Introduction

The development of a vascular network in tumors is a crucial step for the transition of the tumor to malignancy and is thought to be a rate-limiting step. However, the mechanism regulating this process, known as the angiogenic switch, is still largely unknown. Several angiogenic factors including acidic fibroblast growth factor (bFGF), VEGF, transforming growth factor- α (TGF α), TGF- β , hepatocyte growth factor, tumor necrosis factor- α (TNF- α) have all been identified to play an important role in regulating tumor angiogenesis. Among these factors, VEGF-A is a potent angiogenesis promoter for blood vessel growth in both physiological and pathological conditions (Ferrara. 2004). VEGF-A regulates the survival and proliferation of endothelial cells as well as being a potent inducer of vascular permeability (Dvorak. 2002, Ferrara, et al., 2003).

VEGF-A is a member of a gene family that includes placenta growth factor (PlGF), VEGF-B, VEGF-C and VEGF-D (for review please see (Ferrara. 2004, Ferrara, et al., 2003). In the mouse, alternative splicing leads the generation of four protein isoforms of VEGF-A (Shima, et al., 1996) and among them, VEGF₁₆₄ is the predominant molecular species found in variety of normal and transformed cells (Keyt, et al., 1996). The activity of VEGF-A is mediated by VEGF-R1 or FMS-like tyrosine kinases1 (Flt-1) and VEGF-R2 (Flk-1), both of which are expressed by endothelial cells (Ferrara. 2004). VEGF-A is an endothelial mitogen (Leung, et al., 1989). In addition to promoting the development of blood vessels, VEGF-A has also been reported as a chemoattractant for endothelial cells, osteoclasts and monocytes (Yoshida, et al., 1996) the latter of which express VEGF-R1.

The expression of VEGF-A has been found in various human cancers and it is associated with disease progression and decreased survival rate suggesting that it plays an important role in malignant progression (Jain, et al., 2006) In addition to tumor cells, VEGF is also expressed in the tumor stroma, raising the question of the relative importance of VEGF produced in each compartment in tumor angiogenesis and progression. Dong and coworkers (Dong, et al., 2004) reported that VEGF-null fibrosarcomas were tumorigenic and angiogenic *in vivo* in spite of the absence of tumor-derived VEGF. This group further demonstrated that VEGF-producing stromal fibroblasts played a crucial role in regulating tumor angiogenesis in the transplanted VEGF-null fibrosarcomas. Using a mouse model of cervical cancer, Giraudo and co-workers also reported that macrophages in the tumor microenvironment regulating tumor angiogenic switch by producing MMP-9, a protease implicated in mobilization of VEGF (Giraudo, et al., 2004). These studies indicate that in certain tumor microenvironments, stromal cells play a dominant role in promoting the angiogenic switch through producing VEGF or affecting the function of VEGF.

We have previously shown that VEGF-A is produced by tumor-associated macrophages in a mouse model of breast cancer, PyMT mice (Lin, et al., 2006). Depletion of macrophage growth factor, CSF-1, which reduced the infiltration of macrophages into the tumor stroma, resulted in a delayed tumor angiogenic switch and malignant transition in this model (Lin, et al., 2006, Lin, et al., 2001). These observations suggest that in the mammary tumors of PyMT mice, macrophage-produced VEGF-A regulates the growth and development of blood vessels during the angiogenic switch. The fact that CSF-1 is able to stimulate the expression of VEGF-A in cultured macrophages also supports this notion (Eubank, et al., 2003). Based on these studies, we hypothesize that VEGF-A produced by CSF-1 dependent-macrophages is required for the onset of the angiogenic switch in PyMT model of breast cancer. To test this hypothesis, we established a strain of transgenic mouse in which the expression of VEGF-A was expressed in the mammary epithelium in a temporal specific manner. We demonstrate that restoring VEGF-A expression in the premalignant mammary lesions of CSF-1 depleted mice promotes their tumor progression to their level of wild type counterparts. Therefore, the lack of

macrophage produced VEGF-A is a key element contributing to the delayed tumor progression to malignancy in CSF-1 depleted PyMT tumors and can be compensated for by tumor produced VEGF-A.

Results

Regulated expression of VEGF in the mammary gland

To achieve conditional expression of VEGF-A specifically in the mammary epithelium, we have established a bi-transgenic mouse line using the tetracycline-regulated repressor-transactivator system. In this system, the expression of the transgene, VEGF-A-encoding cDNA, is under the control of a tetracycline-dependent promoter (Fig. 1A). The activity of this promoter is regulated by the reverse tetracycline-dependent transcriptional activator, rtTA, whose expression is under the control of mouse mammary tumor virus (MMTV) promoter, as reported previously that shows specific expression in the mammary epithelium and to a lesser degree the salivary gland but not elsewhere (Mok, et al., 1992). In the bi-transgenic mice, transcription from the transgenic VEGF is induced in the presence of doxycycline (Dox). To monitor the expression of the transgene *in vivo*, a foot-and mouth disease virus (FMDV) 2A DNA segment (Donnelly, et al., 2001) was added in-frame at the 3' of the VEGF-A and 5' of GFP cDNAs as illustrated in Fig. 1A. This construct permits multi-cistronic expression of VEGF-A, 2A and GFP mRNA. However, as the 2A sequence directs cleavage of the polypeptide during translation (de Felipe. 2004), VEGF-A and GFP are synthesized in the same cell but as two separate proteins. This approach marks sites of expression while at the same time preventing the potential aberrant function of a GFP-VEGF-A fusion protein. Furthermore, to reduce leaky transcription from the transgene, a common problem of the tetracycline regulatory system, a silencer construct was co-injected with the transgene (data not shown). No leakage was found in untreated transgenic mice (data not shown).

One founder carrying the *Vegfa-2A-Gfp* transgene (*Tg(TetopVegfa-2AGfp) 1Jwp*) that had co-integrated with the Tet-silencer was identified (referred as VEGF-A bi-transgenic) and bred onto mice carrying the MMTV LTR/rtTA transgene (*Tg(MMTV-rtTA)Lach*). The expression of VEGF-A and GFP in the mammary glands of the bi-transgenic mice was compared with mice carrying one of the transgenes using Western blotting analysis (Fig. 1B). Both the transgenic and control mice were treated with 1mg/ml Doxycycline (Dox) in drinking water for two weeks from age 6 to 8 weeks. The levels of both VEGF-A and GFP protein were strongly induced in the mammary glands of the bi-transgenic mice (Fig. 1B, lane 1 and 2) compared to undetectable signals in mice carrying either one of the transgenes (Fig. 1B, lane 3–5).

To confirm that the expression of VEGF-A is restricted to the mammary gland, different tissues from bi-transgenic mice with the same treatment were analyzed. Figure 1C shows that the level of VEGF-A protein in mammary gland isolated from a bi-transgenic mouse is also strongly induced compared to the signals detected in other tissues from the same mouse as well as the mammary gland from a non-transgenic control (Figure 1C, M.gland+ vs M. gland-).

The original MMTV promoter is expressed in several tissues other than the mammary epithelium including some hematopoietic cells (Ross, et al 1990, Kumaraswamy, et al., 2003). However, the promoter used in the MMTV-rTta construct is the MMTV-206 promoter that contains sequences from V-H-ras that confers more restricted expression to the mammary epithelium. In fact in an extensive analysis Gunther et al (Gunther, et al., 2002) indicated that it was only expressed in the mammary and salivary epithelium. However, because of its importance for our analysis that it is not expressed in hematopoietic cells, we further characterized the MMTV expression using the VEGF-A-2A-GFP as a reporter. To ensure that GFP was preserved properly during the tissue preparation and to test expression in

macrophages, tissues from a *Csf1r-GFP* transgenic mouse (*tg(Csf1r-Gfp)Hume*), in which GFP was expressed specifically in macrophages (Sasmono, et al, 2003), were processed in the same experiment under the same condition as tissues isolated from the VEGF-A bi-transgenic mice (Fig. 2). In this experiment, Texas-red conjugated dextran was also used to mark phagocytotic macrophages, as described in the Experimental Procedures. In the spleen of *Csf1r-GFP* mouse, the dextran and GFP positive cells were found in the stroma surrounding the white pulp which consists mainly of lymphocytes (Fig. 2a and b, blue arrows). No GFP positive cells were found in the white pulp (Fig. 2a and b, white arrows). Dextran marked macrophages were found in the stroma surrounding the white pulp in the spleen isolated from the VEGF-A bi-transgenic mice; however, no GFP positive cells were observed in the tissue section (Fig. 2c and d). This result indicates that the VEGF-A transgene is not expressed in either macrophages or lymphocytes in the VEGF-A bi-transgenic mice. To further confirm this finding, thymus was prepared from both transgenic strains. Most of the GFP positive cells in the thymus of the *Csf1r-GFP* mouse were co-localized with dextran positive cells (Fig. 2e and f) indicating that the GFP expression in macrophages was well preserved in this experiment. In contrast, no GFP positive cells were found in either dextran positive or negative area in the thymus isolated from the VEGF-A bi-transgenic mice (Fig. 2g and h) confirming that the transgenic VEGF-A/GFP was not expressed in either myeloid or lymphoid cells.

Furthermore, and consistent with the Western blot analysis, the expression of GFP was found exclusively in mammary ducts in the VEGF-A bi-transgenic mice (Fig. 2j) in contrast to the GFP positive cells found in the mammary stroma in the *Csf1r-GFP* mouse (Fig. 2i). To further confirm that the expression of the transgenic VEGF-A/GFP is mammary epithelium specific, various tissues and cells including bone marrow derived macrophages, pancreas, liver and skin from the VEGF-A bi-transgenic mice were analyzed and no GFP positive cells were found in these tissue examined although macrophages could easily be identified by their phagocytosis of Texas Red labeled dextran. Taken together these studies reported in Figure 1 and Figure 2 indicate that the expression of the transgenic VEGF-A is inducible by Dox treatment and the expression is restricted to the mammary and salivary epithelium. Importantly there was no expression in any hematopoietic cells including any tissue macrophages examined.

Transgenic expression of VEGF-A induces the development of a high density vessel network in the mammary gland

To examine the effect of VEGF-A in mammary tumor biology, the bi-transgenic system was crossed onto a mouse model of breast cancer where tumors are induced by the mammary restricted expression of the Polyoma Middle T oncoprotein (PyMT mice) (Guy, et al., 1992). Consistent with the increased expression of VEGF-A, inguinal mammary glands isolated from mice carrying either two or three (carrying the MMTV-PyMT transgene) transgenes compared to the single-transgenic controls (Fig. 3Ai) were filled with blood vessels (Fig. 3A ii) following Dox treatment. Using fluorescent microscopy, we observed that in contrast to the non-transgenic controls (Fig. 3Bi), the entire mammary epithelial ductal tree and tumors of the bi- or tri-transgenic mice were brightly marked by the green fluorescent protein (Fig2B ii). GFP expression was not observed elsewhere in the mammary gland or in other tissues. This result confirms that the transgenic construct is expressed specifically in the mammary epithelium.

To examine the effect of the VEGF-A transgene expression on vessel development in the mammary gland, Dox treated rtTA/VEGF-A bi-transgenic mice were iv injected with Texas-red conjugated dextran 5 minutes before mammary glands were isolated for whole-mount analysis, as described previously (Lin, et al., 2006). Fig 2C shows representative images from such whole mount preparation. We observed that a vessel network developed that surrounded the GFP positive mammary duct (Fig. 3Ci– iii). No such vessel network was found in the mammary glands isolated from mice carrying a single transgene (data not shown). This

observation shows that the transgenic expression of VEGF-A in the mammary epithelium can act as an angiogenic promoter to induce vasculature development in the adjacent stroma.

Transgenic expression of VEGF-A promotes tumor progression to malignancy in CSF-1 depleted PyMT mice

We have previously reported that, compared to the wild type PyMT mice, tumor progression in the CSF-1 depleted PyMT mice, *Csf1^{op}/Csf1^{op}*, was inhibited following a delayed onset of the angiogenic switch in the tumor (Lin, et al., 2006, Lin, et al., 2001). We also reported that such delayed tumor progression was associated with reduced infiltration of macrophage in the primary tumors (Lin, et al., 2001). Since VEGF-A expression was mainly found in tumor associated macrophages in PyMT mammary tumors (Lin, et al., 2006), we hypothesized that the delayed tumor angiogenic switch in *Csf1^{op}/Csf1^{op}* tumors was due to a lack of macrophage produced VEGF-A.

An increase of macrophage infiltration in mammary tumors was observed in wild type PyMT mice at 7–8 weeks of age in mixed genetic background (Lin, et al., 2001) and 1–2 weeks earlier in FVB background (data not shown). The angiogenic switch and malignant transition occurred 1–2 weeks following such an increase in macrophage density in the primary tumors. To determine whether the lack of macrophage produced VEGF-A is the cause of delayed tumor progression in *Csf1^{op}/Csf1^{op}* tumors in which the increase of macrophage infiltration did not occur, we sought to induce the expression of the transgenic VEGF-A in the *Csf1^{op}/Csf1^{op}* mammary tumors close to the time when macrophage infiltration occurs in the wild type tumors.

To determine whether Dox treatment was able to induce angiogenesis in mammary lesions, we first tested the effect of the transgenic VEGF-A on vessel network formation in premalignant tumors in wild type PyMT mice (Fig. 4A). As reported previously, tumors developed in PyMT mice have defined stages of progression (Lin, et al., 2002). Premalignant lesions were classified as hyperplasia that progressed to adenoma/MIN, the stage that increased macrophage infiltration was observed (Lin, et al., 2001). As mentioned above, we found that tumor progression in mice with FVB background was approximately two weeks faster than the out-bred mice. Since the bi-transgenic mice used in this study is the first generation of outbred mice from FVB background, the rate of tumor progression and the timing of macrophage infiltration in these mice were found to be close to mice with a FVB background (data not shown). Therefore, we treated the transgenic PyMT mice from 4 to 6 weeks of age when the increase of macrophage infiltration was observed in the mammary tumors of FVB PyMT mice. At the end of the treatment, a high density vasculature was developed in tumors as determined by IHC staining with an anti-vWF antibody that reliably marks vessels (Lin, et al., 2006) (Fig. 4Ab and d). These newly formed capillaries are located throughout the tumor lesion (Fig. 4Ab). Many of them have enlarged lumens filled with RBC (Fig. 4 Ad *). No such capillaries were developed in the PyMT control mice treated in the same manner (Fig. 4A a and c). In the non-transgenic mammary glands, the vessel density in the lesions appears similar or even lower than the surrounding fat pad (Fig. 4Aa arrows) and the lumens of the vessels is smaller (Fig. 4Ac arrows) compared to the transgenic counterparts (Fig. 4Ad). These results indicate that the transgenic VEGF-A is able to induce the formation of a high density vascular network in premalignant lesions that is never observed in non-transgenic mice.

Next we wanted to determine whether the transgenic VEGF-A is also able to induce vessel network formation in the premalignant lesions of *Csf1^{op}/Csf1^{op}* mice in which the increase of macrophage infiltration during tumor progression is inhibited. The majority of *Csf1^{op}/Csf1^{op}* PyMT mice at 6 weeks of age had tumors at adenoma/MIN stage, thus we treated these mice with Dox starting at 6 weeks of age for two weeks. Similar to the observation in the wild type PyMT mice, an high density of vessel network was developed in the transgenic *Csf1^{op}/*

Csf1^{op} tumors at the end of the Dox treatment (Fig. 4Bii). The vessels in the network had large lumens which were filled with RBC and wrapped around the GFP positive acini (Fig. 4Bii arrows). In contrast, after the Dox treatment in the non-transgenic lesions, the vessel density was much lower and the size of vessels was smaller. Moreover, the vessel lumens in the non-transgenic tumors were much smaller than the counter parts in the transgenic tumors (Fig. 4Bi arrows).

To determine the effect of the transgenic expression of VEGF-A in tumors, we next examined the tumor stages for these treated mice. All of the wild type PyMT mice with or without the VEGF-A transgene examined at the end of the Dox treatment from 6 to 8 weeks of age already had lesions that had progressed to malignant stages (Fig. 5Ac and d and B) suggesting that the angiogenic switch had occurred in the wild type PyMT mice between 6 to 8 weeks of age regardless of the expression of the transgenic VEGF-A. In contrast and consistent with previous reports, tumors from ~50% of non-transgenic *Csf1^{op}/Csf1^{op}* PyMT mice examined were still at pre-malignant stages (Fig. 5Aa and 5B op-non). However, all of the VEGF-A transgenic *Csf1^{op}/Csf1^{op}* PyMT mice developed malignant lesions at the end of the treatment showing a significant enhanced tumor progression versus the non-transgenic counterparts (*Fisher Exact Test*. $p = 0.033$). These results indicate that increased expression of VEGF-A in these macrophage-depleted *Csf1^{op}/Csf1^{op}* PyMT mice promotes the angiogenic switch and accelerates tumor progression to malignancy to the level similar in a similar manner to the wild type PyMT mice.

Transgenic expression of VEGF-A induces an increase of macrophage infiltration in mammary gland

The transgenic expression of VEGF-A in mammary glands not only increased the development of a high density vascular network but also increased the infiltration of leukocytes in the stroma of mammary ducts and tumors. Fig. 6A shows representative images of mammary ducts from non-transgenic (a and c) and VEGF-A transgenic (b and d) mice at 8 weeks of age which have been treated with Dox for two weeks. Multiple layers of stromal cells were found in the stroma adjacent to the ducts of VEGF-A transgenic mammary gland (Fig. 6Ad arrows). This stroma consists of several cell types including fibroblasts and leukocytes. Such heavy leukocytic infiltration is not seen in normal mammary glands in which very few leukocytes are seen in the adjacent stroma of mature ducts (Fig. 6Ac) (Gouon-Evans, et al., 2000). In fact, such massive leukocytic infiltration is often seen around the developing terminal end buds (TEBs) of the mammary duct, which consists of a large number of proliferating epithelial cells surrounded by a dense stroma. Similarly, a high density of leukocytic infiltration was also observed in the primary tumors of VEGF-A transgenic mice treated with Dox. A majority of these infiltrated leukocytes were macrophages, determined by an IHC using antibody recognizing the pan macrophage marker, F4/80 (Fig. 6B b and d). Very few F4/80 positive cells were observed at a similar stage of mammary lesions in non-transgenic littermates (Fig. 6B a and c).

These data suggest that VEGF-A is acting as a chemoattractant to macrophages that are also known to express VEGFR1 (Ferrara, 2004). Thus to determine the phenotype of the recruited macrophages we analyzed the expression of VEGF R1 in myeloid cells isolated from tumor stroma using FACS. Cell suspensions prepared from primary mammary tumors were labeled with anti-CD11b and F4/80 to identify myeloid cells. This shows that three populations of myeloid cells were identified in VEGF-A transgenic PyMT mice (Fig. 7A). Population R2 and R3 were identified as macrophages according to their relative high expression of macrophage marker F4/80. On the other hand, population R4 was identified as granulocytes determined by their relative low expression of F4/80 and high expression of the neutrophil marker Gr1 (data not shown).

Previous studies have suggested that VEGF-A causes the infiltration of bone marrow-derived circulating cells (RBCCs) through activating perivascular myofibroblasts to produce the chemokine SDF1 (CCL12) that induces the infiltration of RBCCs (Grunewald, et al., 2006). To determine the possible effects of VEGF-A and SDF1 on the infiltration of myeloid cells in PyMT tumors, we analyzed the expression of VEGF R1 and SDF1 receptor, CXCR4, in the myeloid cells (CD11b⁺) isolated from the tumor stroma. We found that in the VEGF-A transgenic PyMT tumors, ~ 20% of macrophages isolated were VEGF R1 positive (Fig 6A R3 and R2). Less than 2% of these macrophages expressed SDF1 receptor, CXCR4 (Fig. 7AR2 and R3). On the other hand, a much higher percentage of granulocytes (37%) expressed VEGF receptor 1 (Fig. 7A R4). However, in a similar fashion to macrophages, less than 2% of these cells expressed CXCR4. A similar distribution of VEGF R1 and CXCR4 expressing Cd11b⁺ cells were found in non-transgenic PyMT tumor (data not shown). These results suggest that SDF1 does not play a major role in regulating the infiltration and/or activation of tumor associated myeloid cells in PyMT tumors. However, VEGF-A appears to have a direct influence on the myeloid cells in PyMT tumors.

To determine whether SDF1 is expressed in the mammary tumors in PyMT mice, anti-mouse SDF1 antibody was used to stain the tumor section. As shown in Fig. 7B, perivascular myofibroblasts in the tumor appeared to be negative for SDF1 (a, short arrows) whereas many tumor cells are positive for this factor (Fig. 7B a and b long arrows). This result suggests that, different from the effect of transgenic VEGF-A expression in the heart and lung (Grunewald, et al., 2006), VEGF-A expressed in the PyMT tumor did not appear to induce SDF1 expression in perivascular myofibroblasts.

Transgenic expression of VEGF-A in mammary tumors promotes tumor invasion

Correlated with the increase of macrophage infiltration in VEGF-A transgenic mammary tumors, we observed an increase of tumor invasion into the mammary stroma in the CSF-1 depleted PyMT mice (Fig. 8Aa black arrows). A specific histology referred to as “Medusa” structures was seen in many VEGF-A transgenic *Csf1^{op}/Csf1^{op}* tumors (Fig. 8A white arrows). In this structure, tumor cells appeared to grow aggressively and actively invade into the stroma (Fig. 8Ab arrows). Using the expression of Ki67 as a surrogate marker for cells in DNA synthesis, IHC staining with anti-Ki67 antibody indicated that the cells in these medusa structures are highly proliferative with most of the cell being Ki67 positive (Fig. 8Ac) especially at the invasive fronts (Fig. 8Ad arrows). In contrast to this, a large percentage of tumor cells in the tumors of non-transgenic *Csf1^{op}/Csf1^{op}* mice are Ki67 negative (Fig. 8Ba and b arrow).

Discussion

Establishment of a vasculature is essential for the development of organs during embryogenesis. In this respect, tumors are no exception since they also need an adequate vascular supply to grow effectively (Folkman. 2002). Indeed, there is substantial evidence that as tumor progress to the malignant stage there is a sharp increase in vascular density in a process known as the angiogenic switch (Hanahan and Folkman. 1996, Naumov, et al., 2006). When this angiogenic switch is impeded either through the use of angiogenesis inhibitors or by genetic deprivation of essential factors tumor progression to malignancy is severely impaired (Lin, et al., 2006, Naumov, et al., 2006).

Many factors are involved in the complex process of angiogenesis that results in the formation of a coherent network of vessels. Prime amongst these factors is VEGF-A, a growth factor that binds two trans-membrane receptor tyrosine kinases, VEGFR1 and R2. VEGFR2 is restricted to endothelial cells while VEGFR1 is also expressed upon myeloid cells (Ferrara. 2004). Numerous studies have indicated the importance of VEGF-A in tumor development and it,

together with its receptor system, are the targets for therapy and several anti-VEGF therapeutics are now in clinical practice (Naumov, et al., 2006). Detailed analysis of human breast cancer samples show that VEGF-A can be produced by both tumor cells and infiltrating macrophages in some cases in mutually exclusive patterns (Leek, et al., 2000). These data suggest that tumors absolutely require VEGF-A but they can obtain it from a variety of sources including infiltrating host macrophages.

To explore the role of macrophages in breast cancer we have used genetic depletion of these cells in a mouse model where the tumors are caused by the transgenic expression of the Polyoma Middle T oncoprotein in the mammary epithelium. This macrophage depletion had multiple consequences including a reduction in the progression of tumors to malignancy and a lowering of metastatic capacity (Lin, et al., 2001). Detailed analysis of the transition period when the benign lesions become malignant indicated a classical angiogenic switch in wild type mice but a delayed or absent transition in the macrophage depleted mice (Lin, et al., 2006). In fact, even in those tumors from macrophage depleted mice that had progressed to late malignancy, the vascular density was reduced by ~40% compared to wild type mice (Lin, et al., 2006). In contrast to this data, early recruitment of macrophages to benign lesions by the transgenic expression of CSF-1 in the mammary epithelium in wild type, macrophage replete mice caused premature angiogenesis even in hyperplastic lesions and their acceleration to malignancy (Lin, et al., 2006). These data strongly suggest that macrophages press the angiogenic switch at the malignant transition (Lin, et al., 2006, Lin and Pollard. 2007).

Immunohistochemistry using anti-VEGF-A antibody indicated that as in human breast cancer, in these mouse mammary tumors macrophages express VEGF-A (Lin, et al., 2006). This expression data suggests that the loss of macrophage VEGF-A is causal in the delay of the angiogenic switch and reduced vascularization observed in the macrophage-depleted mice. To test the hypothesis that VEGF-A plays a critical role in this macrophage-mediated angiogenic switch we developed a tetracycline regulated VEGF-A expression system where this secreted molecule is expressed in the mammary epithelial cells at times when the macrophage-depleted tumors are at the hyperplasia to adenoma/MIN stages and thus approaching the malignant transition.

In order to perform these experiments we used a novel method to unequivocally mark VEGF-A-expressing cells. This method used the FMDV virus 2A sequence ligated in-frame between VEGF-A and GFP cDNAs in a doxycycline-inducible transgenic construct. This method works to allow concurrent expression of GFP and VEGF-A from the same mRNA because the 2A sequence directs a proteolytic cleavage during translation between the VEGF-A and GFP polypeptides such that they are expressed as discreet proteins (de Felipe. 2004). In this manner only cells that express VEGF-A can be GFP positive. This polycistronic transgenic construct was co-integrated with a tetracycline silencer element, a strategy that resulted in a non-leaky expression in the absence of doxycycline. Using this method in combination with Western blotting we showed that VEGF-A was expressed throughout the mammary epithelium and not elsewhere except the salivary epithelium and that it was not expressed unless the mice were treated with doxycycline. Importantly no expression could be detected in any hematopoietic cells. Thus this transgenic strain was suitable to test our hypothesis.

We treated transgenic PyMT mice and their controls for two weeks with doxycycline at the time when the malignant transition occurs as well as control non-PyMT mice. This inducible expression of VEGF-A in the mammary epithelium resulted in a dramatic increase in vascular density in the adjacent stroma in both the normal mammary gland during development and in the mammary tumors. This increase in density was observed in both macrophage replete and depleted mice. Analysis of tumor progression in the primary tumors of the inguinal mammary gland indicated that this was unaffected in wild type mice with all tumors showing malignant

characteristics. This was probably because in this strain background all the mice even in the absence of transgenically expressed VEGF-A had already progressed to malignancy. This is most likely to be the explanation since constitutive expression of VEGF-A in this PyMT model on an FVB background from the MMTV promoter that is expressed in the mammary epithelium from early in life decreased tumor latency, increased tumor burden and accelerated malignancy (Schoeffner, et al., 2005). However, in macrophage depleted *Csf1^{op}/Csf1^{op}*.PyMT mice where tumor progression is significantly delayed compared to wild type mice, the over-expression of VEGF-A in pre-malignant lesions accelerated tumor progression to malignancy such that they resembled wild type PyMT mice. In addition, it induced a more malignant phenotype characterized by medusa-like structures with a very high proliferative index and with invasive characteristics. This increase in progression to malignancy also resulted in a significantly higher rate of pulmonary metastasis in the *Csf1^{op}/Csf1^{op}*.PyMT mice.

These data suggests that one of the major functions of macrophages is to bring VEGF-A into the tumor microenvironment to promote angiogenesis as benign tumors progress towards malignancy. This is consistent with the dramatic recruitment of macrophages to the pre-malignant lesions through an as yet unknown mechanism (Lin, et al., 2006). It is interesting to note that transgenic over-expression of CSF-1 in the PyMT model is also sufficient to recruit macrophages to mammary tumors and this in itself is sufficient to promote angiogenesis and the malignant transition (Lin, et al., 2001). This data suggests a causal association between the observed over-expression of CSF-1 in human breast cancers and poor prognosis (Scholl, et al., 1994). This CSF-1 expression is associated with leukocytic infiltrates containing a large numbers of macrophages (Scholl, et al., 1994) and the density of these cells in turn is correlated with increased micro-vascular density and poor prognosis (Leek, et al., 1996). Interestingly, VEGF-A is a CSF-1 regulated molecule in cultured macrophages (Eubank, et al., 2003) and in macrophages associated with CSF-1 expressing melanoma cells (Varney, et al., 2005) suggesting that this growth factor might not only recruit macrophages but also regulate their expression of VEGF-A. Indeed the similarity in phenotypes between VEGF-A and CSF-1 over-expression in this and our previous study (Lin, et al., 2001) suggests that one of the major functions for macrophages in tumors is CSF-1 regulated VEGF-A expression.

It was also striking that VEGF-A-expression recruited many macrophages into the mammary tumor microenvironment even in *Csf1^{op}/Csf1^{op}* mice. In this latter case we have shown that either local infusion or transgenic expression of CSF-1 is sufficient to recruit tissue macrophages suggesting that the pool of circulating monocytes is abundant enough to allow recruitment and differentiation of macrophages given the correct local environment. Macrophage recruitment was also observed by Grunewald et al using a similar tetracycline-regulated transgenic approach to express VEGF-A in the heart and liver (Grunewald, et al., 2006). These recruited bone marrow-derived circulating cells (RBCC) had the characteristic of myeloid cells including the expression of Cd11b (Grunewald, et al., 2006). The cells recruited by VEGF-A to tumors in this study had similar characteristics but upon further characterization they were as classified as both macrophages (F4/80^{hi} Cd11b^{+ve}) and neutrophils (F4/80^{-ve}, Gr1^{+ve}). Grunewald et al (Grunewald, et al., 2006) also showed that the RBCCs were VEGFR1^{+ve} and CXCR4^{+ve} and presented evidence that VEGF-A induced expression of the CXCR4 ligand (CXCL12 or SDF-1) in peri-vascular cells was required for their recruitment. In our study however, we showed the recruited myeloid cells were CXCR4^{-ve} and furthermore we could not detect peri-vascular expression of CXCL12 indicating that this was not the mechanism for their VEGF-A recruitment into the mammary gland. However, twenty percent of the recruited myeloid cells were VEGFR1 positive suggesting that this might be a mechanism for recruitment. VEGF-A is chemotactic for monocytes (Barleon, et al., 1996) data that suggests that the VEGFR1 population might be first recruited and that these cells then produce other myeloid growth factors that recruit or stimulate the proliferation of the remaining 80% of myeloid cells that are VEGFR1 negative.

The RBCC population found after VEGF-A expression in liver and heart were angiogenic in an in vitro aortic ring vessel-sprouting assay (Grunewald, et al., 2006). Indeed there is considerable data that macrophages produce angiogenic factors in a variety of settings (Cho, et al., 2007, Leek and Harris. 2002, Lewis and Pollard. 2006, Lobov, et al., 2005, Sunderkotter, et al., 1994). Despite these data and the association of macrophage recruitment in the present experiments with angiogenesis it is still uncertain whether macrophage-derived factors that are responsible for the increased angiogenesis or the VEGF-A itself acting upon endothelial cells or a combination of both. This will not be resolved until macrophages can be depleted in the VEGF-A-over-expressing mice.

In this study we have shown that VEGF-A is sufficient to recruit macrophages to mammary tumors and it also to promote angiogenesis either alone or in combination with macrophage derived factors. VEGF-A can correct for the deficiency of macrophages in CSF-1 nullizygous mice in the promotion of PyMT tumor progression to malignancy and increasing metastasis. Since immunohistochemical data suggest that the majority of VEGF-A in this model is provided by macrophages this suggests that a major function of macrophages is to bring VEGF-A into the tumor microenvironment at a time when tumors need angiogenesis for their transition to malignancy. Identification of the recruitment factors for macrophages and/or the signal transduction pathways that regulate the production of VEGF-A might therefore constitute novel and attractive therapeutic targets.

Experimental Procedures

Mice

All procedures involving mice were conducted in accordance with National Institutes of Health (NIH) regulations concerning the use and care of experimental animals. The study of mice was approved by the Albert Einstein College of Medicine animal use committee. The PyMT transgenic mice were kindly provided by Dr. W.J. Muller (McGill University, Canada). The origin, care and identification of CSF-1 null mutant (*Csf1^{op}/Csf1^{op}*) mice have been described previously (Lin, et al., 2001). Since *+Csf1^{op}* mice have normal serum concentration of CSF-1, normal tissue population of macrophages and, are in all aspects tested equivalent to wild type (*+/+*) mice (Pollard and Stanley. 1996), these *+Csf1^{op}* are used as controls. The transgenic mice carrying the MMTVLTR-rtTA transgene (*Tg(MMTV-rtTA)Lach*) was kindly provided by Dr. Lewis Chodosh (University of Pennsylvania). The mice used were the first generation of FVB back-crossed to C3H/B6/FVB. Transgenic mice were generated using standard techniques. The silencer plasmid, pTet-tTS, (BD Biosciences/Clontech) was co-injected with the VEGF-A transgenic construct during the preparation transgenic mice. VEGF-A cDNA (Mus musculus vascular endothelial growth factor A, clone # 9895968) was obtained from American Type Culture Collection (ATCC, Manassas, VA). Plasmid carrying FMDV 2A sequence (pSTA/31 +39AA 1D) was kindly provided by Dr. Martin D. Ryan (University of St Andrews, UK). The insert carrying the 2A sequence was obtained by restriction digestion using XbaI and ApaI and then ligated inframe at the 3' end of VEGF-A cDNA and 5' of GFP. The transgenic mice were generated using standard method in the Transgenic Facility at Albert Einstein College of Medicine. One founder with co-integrated transgenes was identified (*Tg(Vegfa-2A-Gfp)1Jwp*) and the expression of the transgene was characterized using standard methods. A PCR based method for genotyping the mice carrying the transgene was established with standard PCR procedure and following primers: F1, AAGTTCATCTGCACCACCG; F2, TGCTCAGGTAGTGGTTGTCG.

Induction of transgene expression—Doxycycline, Dox, (Clontech) was added to drinking water at 1mg/ml. The Dox solution was replaced every three days.

Histological analysis

The *in vivo* vessel labeling method with Texas Red conjugated dextran has been described previously (Lin, et al., 2006). Briefly, Texas Red conjugated dextran (Molecular Probes, Eugene, OR) was iv injected into a mouse 5 minutes before tumors were dissected. The tumor tissue was fixed with 10% Formalin (in PBS) at 4°C overnight and then paraffin embedded and sectioned. To visualize the location of the staining, tissue sections were counter-stained with DAPI. The sections were photographed to TIFF images using an Olympus IX70 microscope and a Sescam QEcooled CCD camera. IHC of macrophage with rat anti-mouse F4/80 antibody was described previously (Lin, et al., 2001). A standard procedure was used for IHC of anti-vWF antibody (DAKO, Denmark), anti-Ki67 antibody (LAB VISION Corp, CA) and anti-DSF antibody (eBioscience, CA). The procedure used to preserved GFP in tissue was described previously (Lin, et al., 2006).

To label the phagocytotic macrophages with Lysine fixable Texas Red conjugated dextran, the reagent was iv injected into a mouse 2 hours before various tissues were dissected. To preserve GFP, tissues were fixed with 5% Formalin in 20% sucrose/PBS solution at 4°C overnight and then embedded for frozen section. To visualize the location of the staining, tissue sections were counter-stained with DAPI. The sections were photographed to TIFF images using an Olympus IX70 microscope and a Sescam QEcooled CCD camera.

Western Blotting Analysis

Western blotting analysis was performed following a standard procedure. For VEGF-A protein, rabbit Anti-mouse VEGF-A, 0.4 µg/ml (Serotec Cat# AAM51, Oxford, UK) and for GFP, anti-GFP, 0.4 ug/ml (Roche Cat # 11 814 460 001), were used. For internal control of protein loading, anti-Tubulin antibody (SantaCruz, CA) was used.

FACS analysis

Mammary tumors were harvested from VEGF-A transgenic and control mice at 6–14 weeks of age. Tissues were minced in 1ml of MEM medium before adding Liberase at 0.028 Wunsch U/mL (Sigma) and DNase I at 20 µg/ml (Sigma). The mixture was incubated half an hour at 37°C under gentle agitation. Cells were separated on a discontinuous Percoll gradient (70/50/40/30%) and the leukocytes were harvested at the 70/50% and 50/40% Percoll interfaces. Cells were stained with antibodies for FACS following standard procedures. Antibodies used for FACS are as follow: Alexa 488 conjugated rat anti-mouse F4/80 (CALTAG Lab, CA), PE-Cy7 conjugated rat anti-mouse CD11b (BD, CA), PE conjugated rat monoclonal anti-mouse CXCR4 (R&D System Inc, MN) and APC conjugated rat-anti-mouse VEGF R1 (R&D System Inc, MN).

Acknowledgements

We would like to thank Dr. Chris Contag, Stanford University, for his advice on the use of the virus 2A sequence in transgenic mice; Dr M.D. Ryan, University of Glasgow for the plasmid containing the 2A sequence; Dr. Lewis Chodosh, University of Pennsylvania, for generously supplying the MMTV-rtTA mice and Dr. Ken Chen and Binzhi Qian for the useful discussion. We also thank Jim Lee and Mark Thompson for excellent technical support and the technical staff of the Transgenic and Gene Targeting Facility, Analytical Imaging Facility and Histotechnology and Comparative Pathology Facility at Albert Einstein College of Medicine for advice. This work was supported by NCI grants CA RO1 94173, CA PO1 100324 and the Albert Einstein Cancer Center Core grant P30 CA 13330. JWP is the Betty and Sheldon Feinberg senior faculty scholar in cancer research. EYL is a Miriam Mandel Scholar for 2006–2007.

Reference

Barleon B, Sozzani S, Zhou D, Weich HA, Mantovani A, Marme D. Migration of human monocytes in response to vascular endothelial growth factor (VEGF) is mediated via the VEGF receptor flt-1. *Blood* 1996;87:3336–3343. [PubMed: 8605350]

- Cho CH, Koh YJ, Han J, Sung HK, Jong Lee H, Morisada T, Schwendener RA, Brekken RA, Kang G, Oike Y, Choi TS, Suda T, Yoo OJ, Koh GY. Angiogenic role of LYVE-1-positive macrophages in adipose tissue. *Circ Res* 2007;100:e47–e57. [PubMed: 17272806]
- de Felipe P. Skipping the co-expression problem: the new 2A "CHYSEL" technology. *Genet Vaccines Ther* 2004;2:13. [PubMed: 15363111]
- Dong J, Grunstein J, Tejada M, Peale F, Frantz G, Liang WC, Bai W, Yu L, Kowalski J, Liang X, Fuh G, Gerber HP, Ferrara N. VEGF-null cells require PDGFR alpha signaling-mediated stromal fibroblast recruitment for tumorigenesis. *Embo J* 2004;23:2800–2810. [PubMed: 15229650]
- Donnelly ML, Hughes LE, Luke G, Mendoza H, ten Dam E, Gani D, Ryan MD. The 'cleavage' activities of foot-and-mouth disease virus 2A site-directed mutants and naturally occurring '2A-like' sequences. *J Gen Virol* 2001;82:1027–1041. [PubMed: 11297677]
- Dvorak HF. Vascular permeability factor/vascular endothelial growth factor: a critical cytokine in tumor angiogenesis and a potential target for diagnosis and therapy. *J Clin Oncol* 2002;20:4368–4380. [PubMed: 12409337]
- Eubank TD, Galloway M, Montague CM, Waldman WJ, Marsh CB. M-CSF induces vascular endothelial growth factor production and angiogenic activity from human monocytes. *J Immunol* 2003;171:2637–2643. [PubMed: 12928417]
- Ferrara N. Vascular endothelial growth factor: basic science and clinical progress. *Endocr Rev* 2004;25:581–611. [PubMed: 15294883]
- Ferrara N, Gerber HP, LeCouter J. The biology of VEGF and its receptors. *Nat Med* 2003;9:669–676. [PubMed: 12778165]
- Folkman J. Role of angiogenesis in tumor growth and metastasis. *Sem. Oncol* 2002;29:15–18.
- Giraud E, Inoue M, Hanahan D. An amino-bisphosphonate targets MMP-9-expressing macrophages and angiogenesis to impair cervical carcinogenesis. *J Clin Invest* 2004;114:623–633. [PubMed: 15343380]
- Gouon-Evans V, Rothenberg ME, Pollard JW. Postnatal mammary gland development requires macrophages and eosinophils. *Develop* 2000;127:2269–2282.
- Grunewald M, Avraham I, Dor Y, Bachar-Lustig E, Itin A, Jung S, Chimenti S, Landsman L, Abramovitch R, Keshet E. VEGF-induced adult neovascularization: recruitment, retention, and role of accessory cells. *Cell* 2006;124:175–189. [PubMed: 16413490]
- Gunther EJ, Belka GK, Wertheim GBW, Wang J, Hartman JL, Boxer RB, Chodosh La. A novel doxycycline-inducible system for the transgenic analysis of mammary gland biology. *FASEBJ* 2002;16:283–292.
- Guy CT, Cardiff RD, Muller WJ. Induction of mammary tumors by expression of polyomavirus middle T oncogenes: a transgenic mouse model of a metastatic disease. *Mol. Cell. Biol* 1992;12:954–961.
- Hanahan D, Folkman J. Patterns and emerging mechanisms of the angiogenic switch during tumorigenesis. *Cell* 1996;86:353–364. [PubMed: 8756718]
- Jain RK, Duda DG, Clark JW, Loeffler JS. Lessons from phase III clinical trials on anti-VEGF therapy for cancer. *Nat Clin Pract Oncol* 2006;3:24–40. [PubMed: 16407877]
- Keyt BA, Berleau LT, Nguyen HV, Chen H, Heinsohn H, Vandlen R, Ferrara N. The carboxyl-terminal domain (111–165) of vascular endothelial growth factor is critical for its mitogenic potency. *J Biol Chem* 1996;271:7788–7795. [PubMed: 8631822]
- Kumaraswamy E, Carlson BA, Morgan F, Miyoshi K, Robinson GW, Su D, Wang S, Southon E, Tessarollo L, Lee BJ, Gladyshev VN, Hennighausen L, Hatfield DL. Selective removal of the selenocysteine tRNA^[Ser]Sec gene (Trsp) in mouse mammary epithelium. *Mol. Cell. Biol* 2003;23:1477–1488. [PubMed: 12588969]
- Leek RD, Harris AL. Tumor-associated macrophages in breast cancer. *Journal of Mammary Gland Biology & Neoplasia* 2002;7:177–189. [PubMed: 12463738]
- Leek RD, Hunt NC, Landers RJ, Lewis CE, Royds JA, Harris AL. Macrophage infiltration is associated with VEGF and EGFR expression in breast cancer. *J Pathol* 2000;190:430–436. [PubMed: 10699991]
- Leek RD, Lewis CE, Whitehouse R, Greenall M, Clarke J, Harris AL. Association of macrophage infiltration with angiogenesis and prognosis in invasive breast carcinoma. *Cancer Res* 1996;56:4625–4629. [PubMed: 8840975]

- Leung DW, Cachianes G, Kuang WJ, Goeddel DV, Ferrara N. Vascular endothelial growth factor is a secreted angiogenic mitogen. *Science* 1989;246:1306–1309. [PubMed: 2479986]
- Lewis CE, Pollard JW. Distinct role of macrophages in different tumor microenvironments. *Cancer Res* 2006;66:605–612. [PubMed: 16423985]
- Lin EY, Gouon-Evans V, Nguyen AV, Pollard JW. The macrophage growth factor, CSF-1, in mammary gland development and tumor progression. *J Mammary Gland Biol Neoplasia* 2002;7:147–162. [PubMed: 12465600]
- Lin EY, Li JF, Gnatovskiy L, Deng Y, Zhu L, Grzesik DA, Qian H, Xue XN, Pollard JW. Macrophages regulate the angiogenic switch in a mouse model of breast cancer. *Cancer research* 2006;66:11238–11246. [PubMed: 17114237]
- Lin EY, Nguyen AV, Russell RG, Pollard JW. Colony-stimulating factor 1 promotes progression of mammary tumors to malignancy. *J Exp Med* 2001;193:727–740. [PubMed: 11257139]
- Lin EY, Pollard JW. Tumor-associated macrophages press the angiogenic switch in breast cancer. *Cancer Res* 2007;67:5064–5066. [PubMed: 17545580]
- Lobov IB, Rao S, Carroll TJ, Vallance JE, Ito M, Ondr JK, Kurup S, Glass DA, Patel MS, Shu W, Morrissey EE, McMahon AP, Karsenty G, Lang RA. WNT7b mediates macrophage-induced programmed cell death in patterning of the vasculature. *Nature* 2005;437:417–421. [PubMed: 16163358]
- Mok E, Golovkina TV, Ross SR. A mouse mammary tumor virus mammary gland enhancer confers tissue-specific but not lactation-dependent expression in transgenic mice. *J Virol* 1992;66:7529–7532. [PubMed: 1331537]
- Naumov GN, Akslen LA, Folkman J. Role of angiogenesis in human tumor dormancy: animal models of the angiogenic switch. *Cell Cycle* 2006;5:1779–1787. [PubMed: 16931911]
- Pollard JW, Stanley ER. Pleiotropic roles for CSF-1 in development defined by the mouse mutation osteopetrotic (*op*). *Adv. Develop. Biochem* 1996;4:153–193.
- Ross SR, Hsu C-LL, Choi Y, Mok E, Dudley JP. Negative regulation in correct tissue-specific expression of mouse mammary tumor virus in transgenic mice. *Mol Cell Biol* 1990;10:5822–5829. [PubMed: 1700274]
- Sasmono RT, Oceandy D, Pollard JW, Tong W, Pavli P, Wainwright BJ, Ostrowski MC, Himes SR, Hume DA. A macrophage colony-stimulating factor receptor-green fluorescent protein transgene is expressed throughout the mononuclear phagocyte system of the mouse. *Blood* 2003;101:1155–1163. [PubMed: 12393599]
- Schoeffner DJ, Matheny SL, Akahane T, Factor V, Berry A, Merlino G, Thorgeirsson UP. VEGF contributes to mammary tumor growth in transgenic mice through paracrine and autocrine mechanisms. *Lab Invest* 2005;85:608–623. [PubMed: 15765121]
- Scholl SM, Pallud C, Beuvon F, Hacene K, Stanley ER, Rohrschneider LR, Tang R, Pouillart P, Lidereau R. Anti-colony-stimulating factor-1 antibody staining in primary breast adenocarcinomas correlates with marked inflammatory cell infiltrates and prognosis. *J. Natl Cancer Inst* 1994;86:120–126. [PubMed: 8271294]
- Shima DT, Kuroki M, Deutsch U, Ng YS, Adamis AP, D'Amore PA. The mouse gene for vascular endothelial growth factor. Genomic structure, definition of the transcriptional unit, and characterization of transcriptional and post-transcriptional regulatory sequences. *J Biol Chem* 1996;271:3877–3883. [PubMed: 8632007]
- Sunderkotter C, Steinbrink K, Goebeler, Bhardwaj R, Sorg C. Macrophages and angiogenesis. *J.Leuk.Biol* 1994;55:410–422.
- Varney ML, Olsen KJ, Mosley RL, Singh RK. Paracrine regulation of vascular endothelial growth factor--a expression during macrophage-melanoma cell interaction: role of monocyte chemotactic protein-1 and macrophage colony-stimulating factor. *J Interferon Cytokine Res* 2005;25:674–683. [PubMed: 16318581]
- Yoshida A, Anand-Apte B, Zetter BR. Differential endothelial migration and proliferation to basic fibroblast growth factor and vascular endothelial growth factor. *Growth Factors* 1996;13:57–64. [PubMed: 8962720]

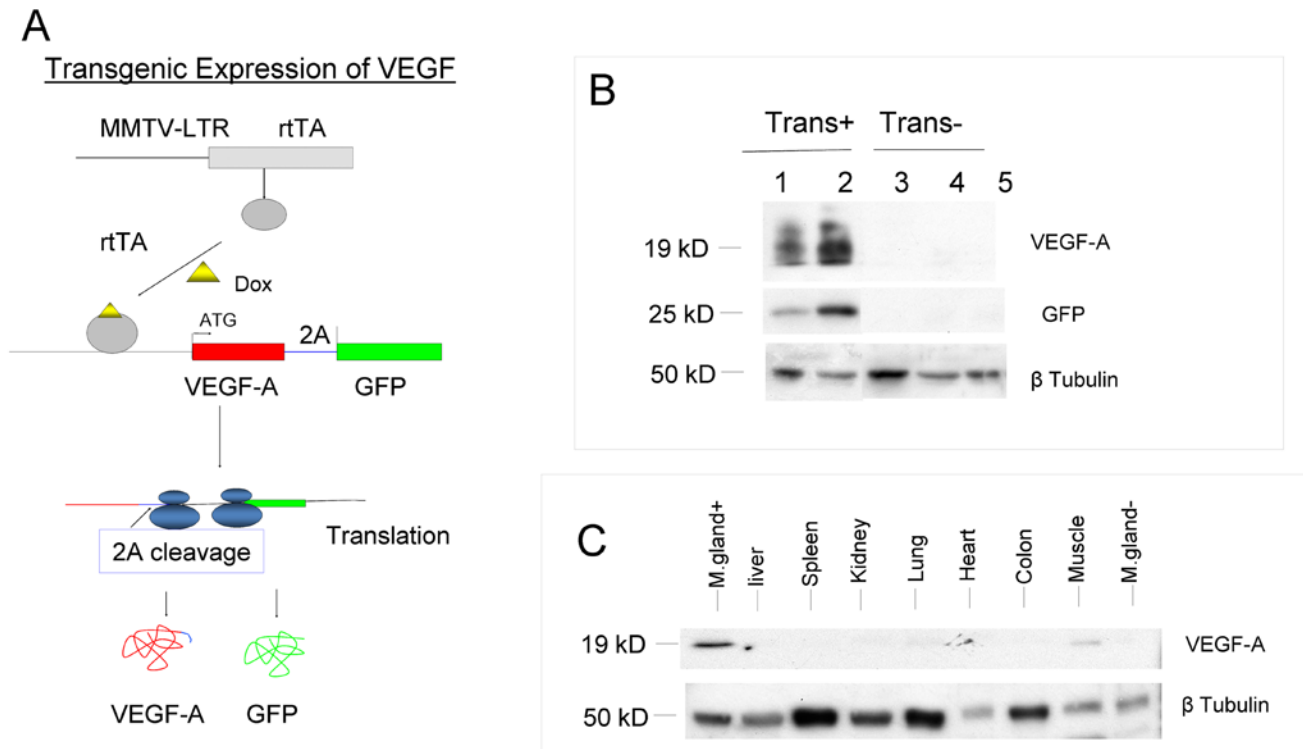


Figure 1. Transgenic expression of VEGF in the mammary gland

A. The expression of transgenic VEGF-A and GFP were regulated by the tetracycline inducible system in which the expression of rtTA was under the control of mammary specific promoter, MMTV-LTR. Upon exposure to doxycycline (Dox), mRNA consisting of both VEGF-A and GFP was synthesized in mammary epithelium. Subsequently, upon translation, 2A induced cleavage led the formation of the two distinct proteins, VEGF and GFP. **B. Western analysis of the transgenic expression.** Western blots are prepared from mammary tissues of mice at 6 weeks of age carrying the VEGF transgene, lane 1 and 2 (lane 1, PyMT⁻; and lane 2, PyMT⁺) and control mice 3–5 (Lane 3: PyMT⁺, rtTA⁻, VEGF⁺; lane 4: PyMT⁻, rtTA⁺, VEGF⁻; lane 5: PyMT⁺, rtTA⁻, VEGF⁺). Mice were treated with 1mg/ml Dox in drinking water for two weeks. The filter was probed with anti-VEGF, -GFP and - β -tubulin antibodies. **C. Tissue specific expression of the VEGF transgene.** Western analysis of transgenic VEGF expression in various tissues as indicated. M. gland⁺, mammary gland from a VEGF transgenic mouse and M. gland⁻, mammary gland from a non-transgenic control. β -tubulin was used as the loading control.

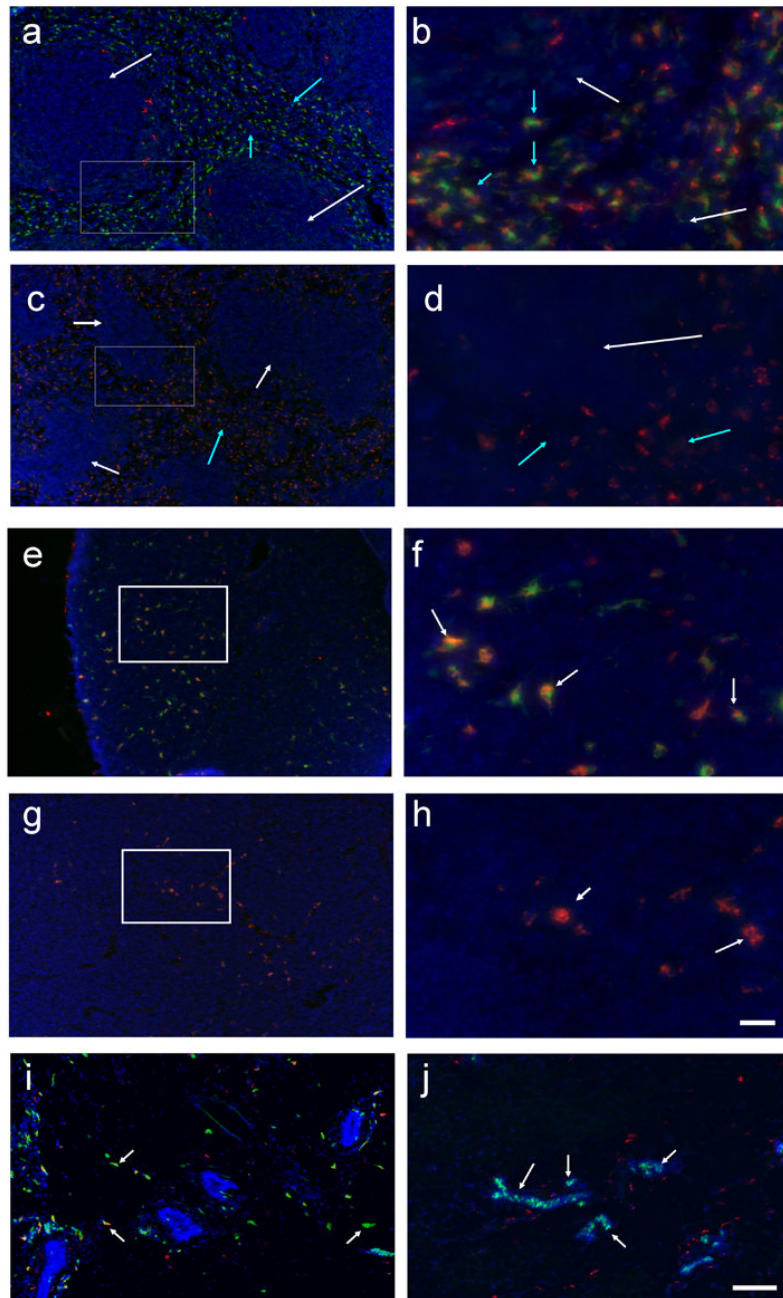


Figure 2. Transgenic expression of VEGF/GFP is mammary epithelium specific

Tissue sections prepared from *Csf1r-GFP* and VEGF-A bi-transgenic mice. To mark the phagocytotic macrophages, both mice were iv injected with Texas-red conjugated dextran two hours before the tissue isolation as described in Experimental Procedures. **a** to **d**, spleen sections from the *Csf1r-GFP* (**a** and **b**) and the VEGF-A bi-transgenic (**c** and **d**) mice. The insets in **a** and **c** are shown at high magnification in **b** and **d**. Blue arrows point to the area consists of mainly Texas-red dextran marked macrophages. Notice that in the spleen from *Csf1r-Gfp* mice, most of the dextran labeled cells are also GFP positive (**b**). White arrows point to white pulp in the spleen which are the collections of lymphocytes. Notice that no GFP positive cells are in these areas. **e** to **h**, sections of thymus from the *Csf1r-Gfp* (**e** and **f**) and the

VEGF-A bi-transgenic (**g** and **h**) mice. The insets in **e** and **g** are shown at high magnification in **f** and **h**. Arrows point to cells that are dextran positive cells. Notice that most of the dextran positive cells in *Csf1r-GFP* thymus are also GFP positive (**f**). **i** and **j**, mammary gland sections from the *Csf1r-Gfp* (**i**) and the VEGF-A bi-transgenic (**j**) mice. Arrows in **j** point to GFP positive mammary ducts and arrows in **i** point to GFP positive stromal cells. Scale bar for **a**, **c**, **e**, **g**, **i**, and **j**, 100 μ M; and for **b**, **d**, **f**, and **h**, 20 μ M.

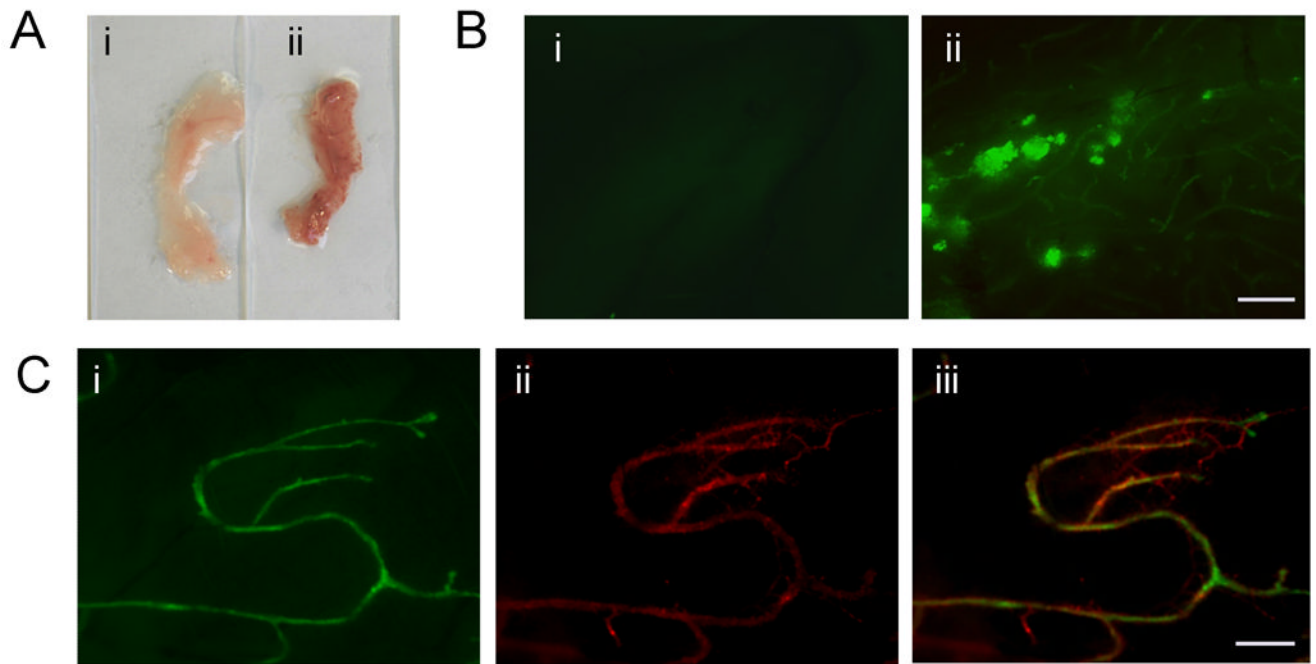


Figure 3. Transgenic expression of VEGF in the mammary gland induces vessel network formation
A. Mammary whole mounts showing an increase of vessel density in the mammary gland isolated from a mouse carrying the VEGF transgene (ii) compared to a non-transgenic control (i). **B. GFP expression in mouse mammary glands.** Fluorescent micrograph of mammary whole mounts from a VEGF transgenic PyMT mouse (ii) and a non-transgenic control (i) shows that both the mammary ducts and tumor lesions were marked by GFP. Size bar: 1mm. **C. Transgenic VEGF induces vessel formation around the mammary ducts.** The images were prepared from mammary whole mounts from a VEGF transgenic mouse i.v. injected with Texas-red dextran to label the blood vessels (ii). The mammary ducts are marked by the transgenic expression of GFP(i). The vessel network is formed surrounding the GFP expressing mammary ducts (iii). Size bar: 0.3 mm.

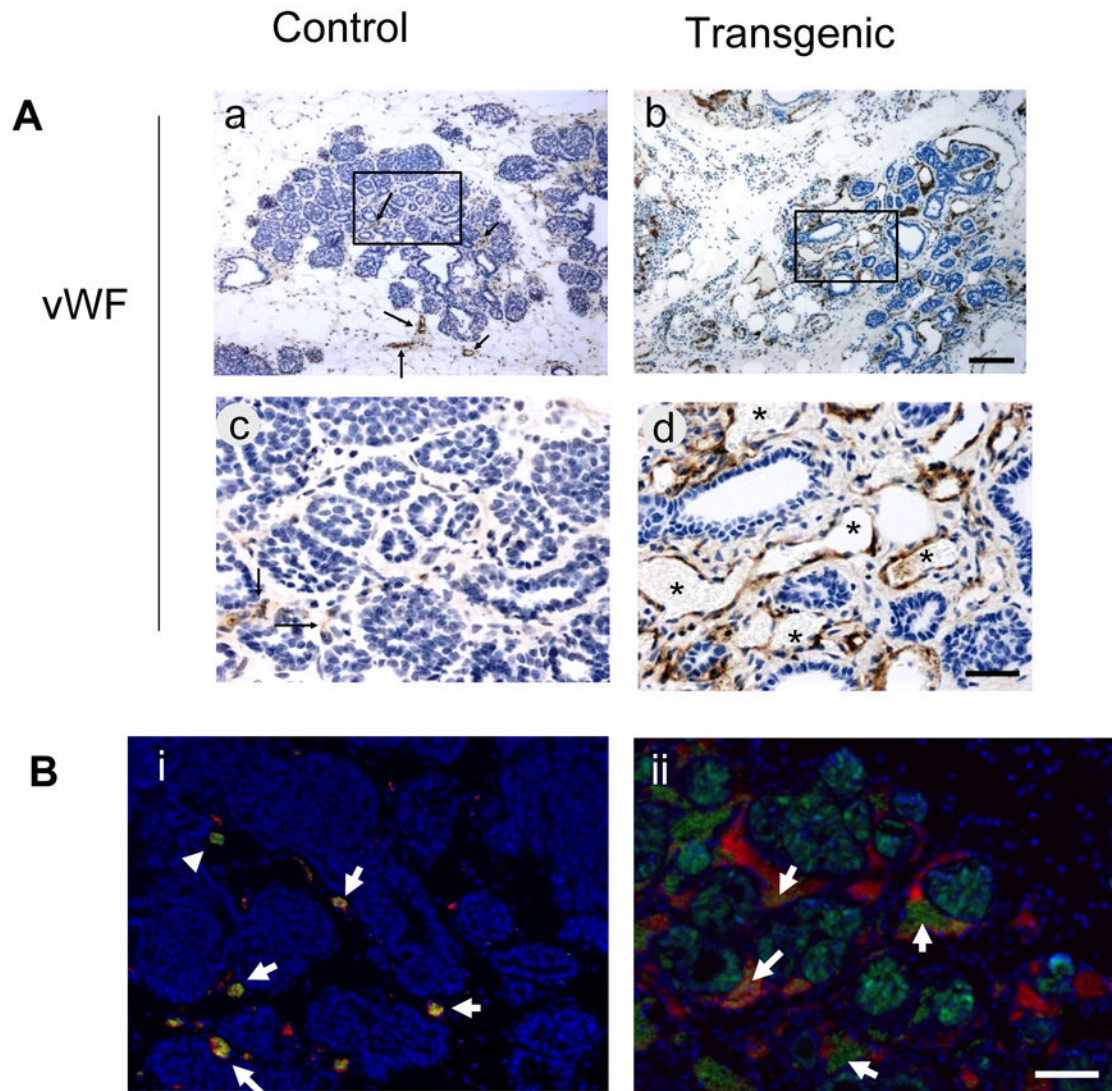


Figure 4. Transgenic expression of VEGF induces angiogenesis in pre-malignant lesions

A. Induction of a high density vessel network in premalignant tumors from wild type PyMT mice. IHC using anti-vWF antibodies. Section of mammary lesions from wild type PyMT mice at 6 weeks of age carrying the VEGF transgene (right panel) or the non-transgenic control (left panel) counter-stained with hematoxylin. Mice were treated with Dox for two weeks. The insets in the top panel are shown in the lower panel. The vessel lumen is labeled with *. Arrow in **a** and **c** point to vessel positively stained with the anti-vWF antibody in the lesion. Size bar: for **a** and **b**, 100 μ M; for **c** and **d**, 30 μ M. **B.** Induction of vessel network formation in adenoma stage tumors from *Csf1^{op}/Csf1^{op}* PyMT mice. Sections of tumor lesions from *Csf1^{op}/Csf1^{op}* PyMT mice at 8 weeks of age. Mice were treated with Dox for two weeks. Blood vessels were marked by i.v. injection of Texas-red conjugated dextran and visualized by a fluorescent microscope. ii, a tumor from VEGF transgenic mouse and i, a non-transgenic control. Arrows point to autofluorescent RBCs in capillaries. Size bar: 30 μ M.

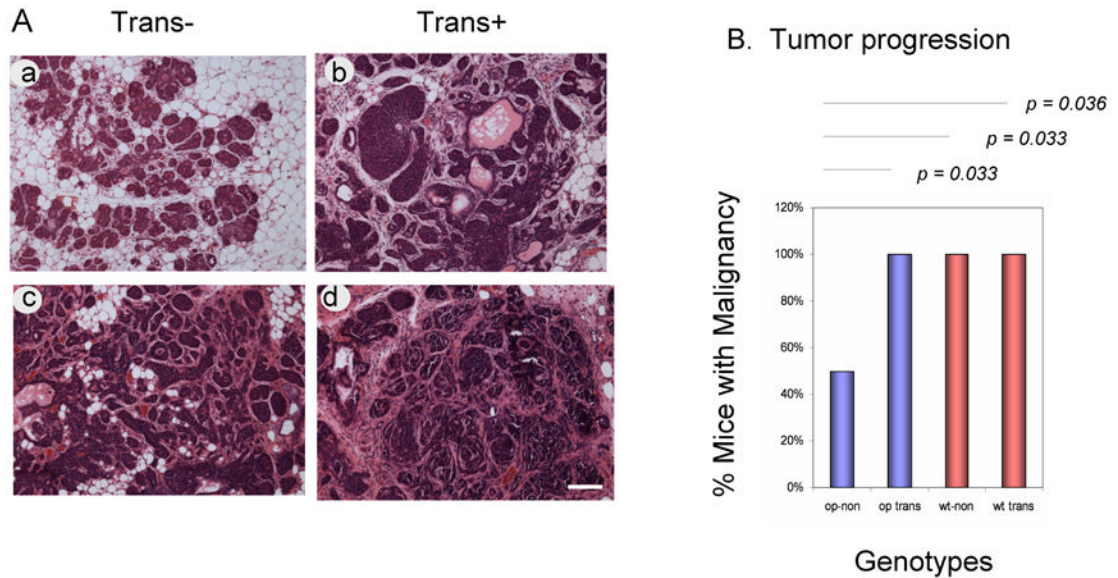


Figure 5. Transgenic expression of VEGF in mammary tumors accelerates tumor progression to malignancy

A. H&E staining of tumor sections from *Csf1^{op}/Csf1^{op}* (**a** and **b**) and wild-type (**c** and **d**) PyMT mice at 8 weeks of age. Mice carrying the VEGF transgene: **b** and **d**; and the non-transgenic controls: **a** and **c**. All of the mice were treated with 1 μ g/ml Dox for two weeks. Size bar: 100 μ M.

B. Quantitative analysis of tumor progression in VEGF transgenic and control PyMT mice. Genotypes: op-non, *Csf1^{op}/Csf1^{op}* non-transgenic mice; op trans, *Csf1^{op}/Csf1^{op}* mice carrying the MMTV-rtTA/VEGF transgene; wt-non, wild type non-transgenic mice and wt trans, wild type mice carrying the MMTV-rtTA/ VEGF transgene. Statistic analysis: *Fisher's Exact Test*.

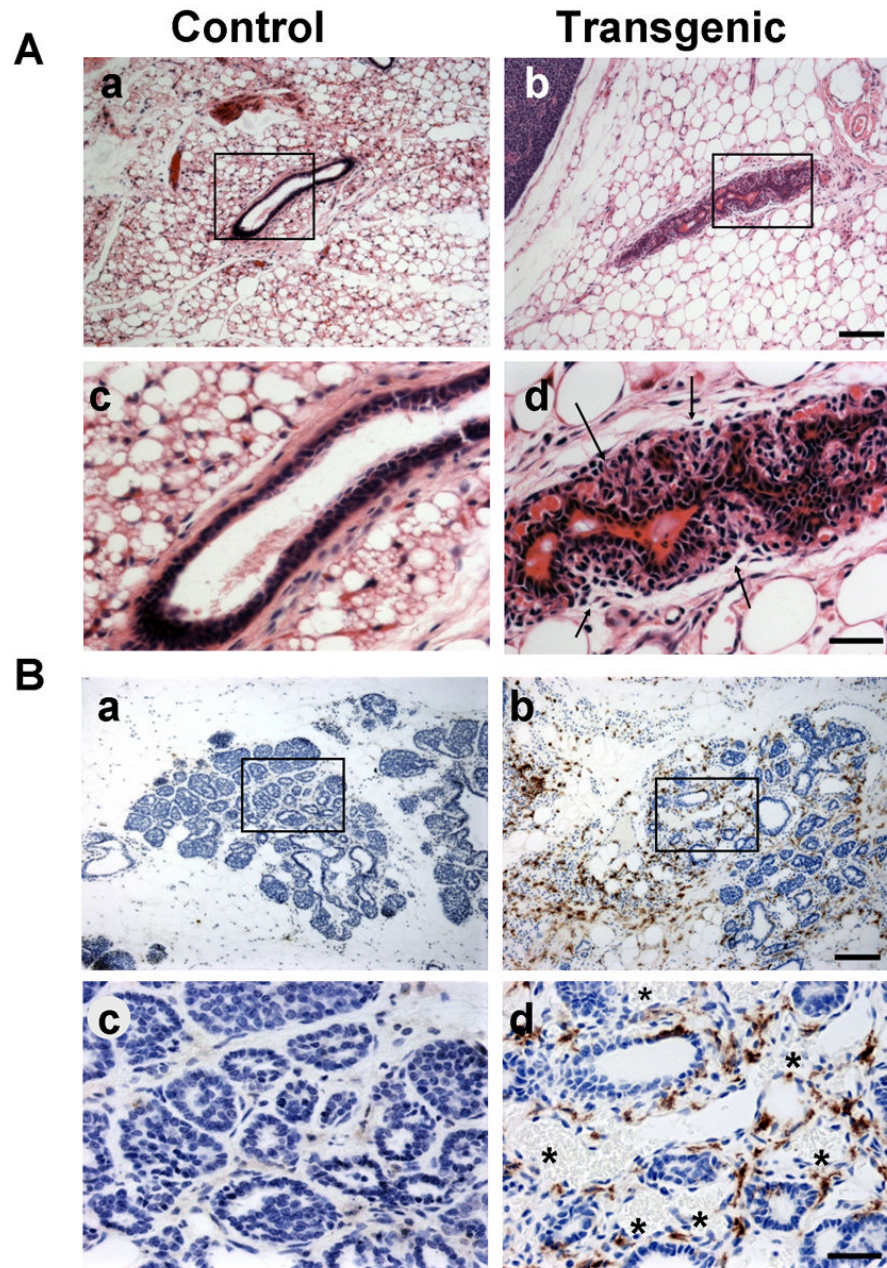


Figure 6. Transgenic expression of VEGF in mammary glands induces leukocytic infiltration
A, a to d, H&E staining of mammary ducts. b and d, mammary gland from a VEGF and MMTV-rtTA double transgenic mouse. a and c, a non-transgenic control. The insets in a and d are shown at high magnification in c and d. Notice that multiple layers of stromal cells are surrounding the mammary duct in the VEGF expressing transgenic mammary gland (d arrows). Size bar for a and b: 100 μ M; for c and d, 30 μ M. B, a to d, IHC of mammary lesions stained by an anti-F4/80 antibody. b and d, mammary lesions from a VEGF transgenic mouse and a and c, lesions from a non-MMTV-rtTA transgenic control. The insets in a and b are shown in c and d, respectively. RBC filled vessels are labeled by *. Size bar for a and b: 100 μ M; for c and d, 30 μ M.

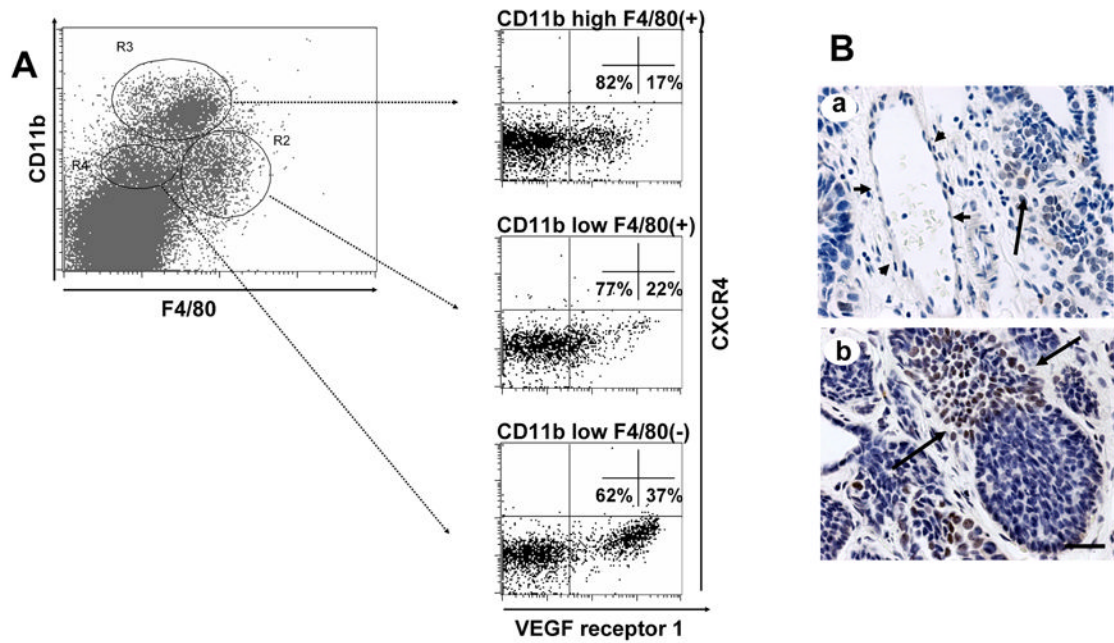


Figure 7. VEGF R1 and SDF-1/CXCR4 expression in mammary tumors

A. FACS analysis of VEGF R1 and CXCR4 expressing myeloid cells isolated from VEGF transgenic tumors. Myeloid cells isolated from mammary tumors of MMTV-rtTA/VEGF transgenic mice were identified by FACS using anti-CD11b and F4/80 antibodies (**A**, left). The expression of CXCR4 and VEGF receptor 1 in three different populations of myeloid cells, R2, R3 and R4, were further analyzed using FACS (**A**, right panel). **B.** IHC staining of VEGF transgenic tumors for SDF1. A blood vessel is pointed by short arrows (**a**) and positive stained cells in the tumor are pointed by long arrows. Size bar: 30µM.

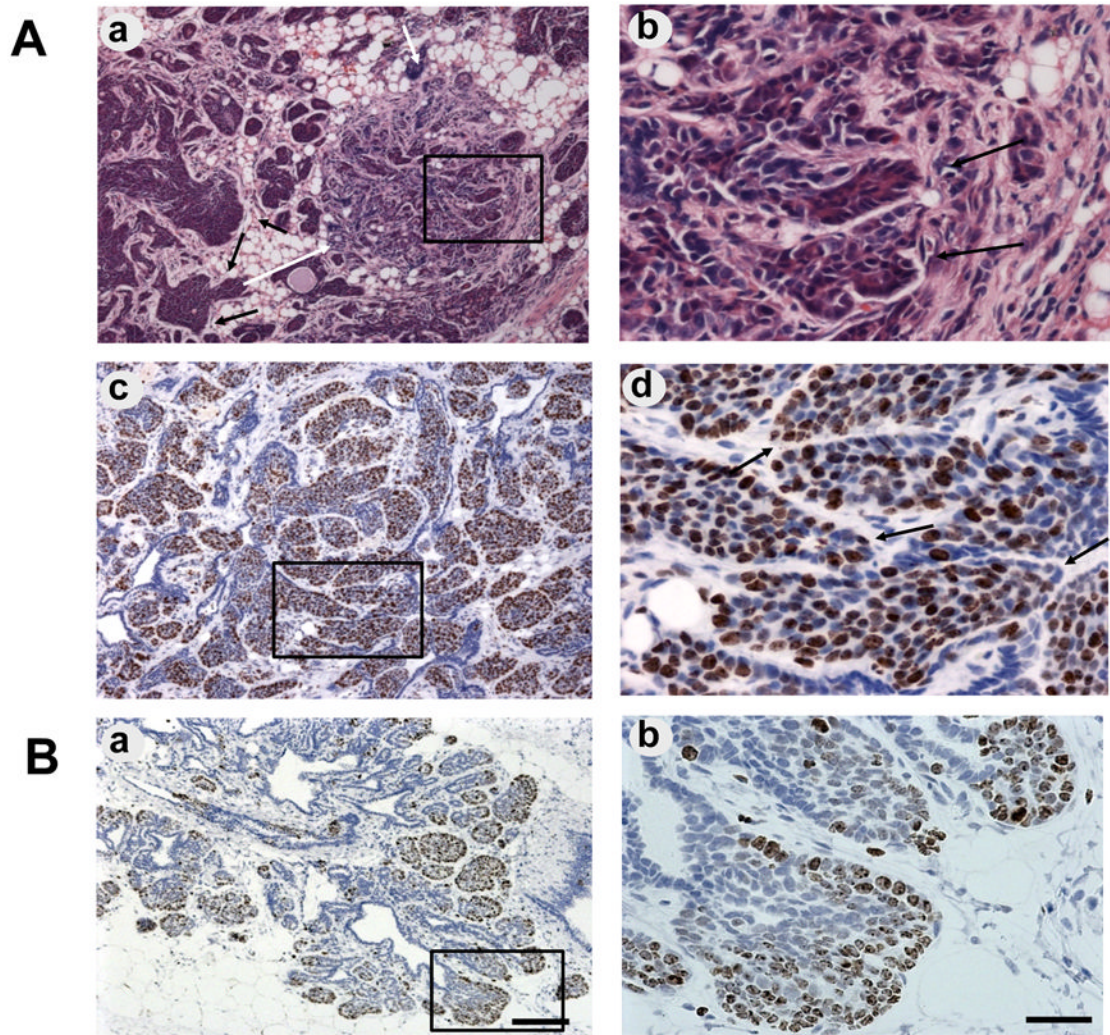


Figure 8. Transgenic expression of VEGF in *Csf1^{op}/Csf1^{op}* induces the formation of a “Medusa” structure

A. Invasive tumor growth. **a** and **b**. H&E staining of mammary tumors from a VEGF transgenic *Csf1^{op}/Csf1^{op}* PyMT mice at 8 weeks of age. Black arrows in image **a** point the invasive lesions and white arrows point to the “Medusa” structure. The invasive front of the tumor cells in the “Medusa” structure was shown in **b** pointed by the arrows. **c** and **d**, IHC using anti-Ki67 antibody showing that a large percentage of tumor cells, especially these cells at the invasive front (arrows in **d**), in the “Medusa” structure is Ki67 positive. The insets in **a** and **c** are shown in **b** and **d**. **B.** Ki67 IHC of mammary lesion from a non-transgenic *Csf1^{op}/Csf1^{op}* mouse at 8 weeks of age. The inset in **a** is shown in **b**. Notice that ~50% of cells in the lesion are Ki67 negative. Size bar for the left panel is 100 μ M and right panel 30 μ M.