



THE UNIVERSITY *of* EDINBURGH

Edinburgh Research Explorer

Growth of *Cowdria ruminantium*, the causative agent of heartwater, in a tick cell line

Citation for published version:

Bell-Sakyi, L, Paxton, E, Munderloh, UG & Sumption, KJ 2000, 'Growth of *Cowdria ruminantium*, the causative agent of heartwater, in a tick cell line' *Journal of Clinical Microbiology*, vol 38, no. 3, pp. 1238-40.

Link:

[Link to publication record in Edinburgh Research Explorer](#)

Document Version:

Publisher final version (usually the publisher pdf)

Published In:

Journal of Clinical Microbiology

Publisher Rights Statement:

© 2000, American Society for Microbiology

General rights

Copyright for the publications made accessible via the Edinburgh Research Explorer is retained by the author(s) and / or other copyright owners and it is a condition of accessing these publications that users recognise and abide by the legal requirements associated with these rights.

Take down policy

The University of Edinburgh has made every reasonable effort to ensure that Edinburgh Research Explorer content complies with UK legislation. If you believe that the public display of this file breaches copyright please contact openaccess@ed.ac.uk providing details, and we will remove access to the work immediately and investigate your claim.



**Growth of *Cowdria ruminantium*, the
Causative Agent of Heartwater, in a Tick
Cell Line**

Lesley Bell-Sakyi, Edith A. Paxton, Ulrike G. Munderloh and
Keith J. Sumption
J. Clin. Microbiol. 2000, 38(3):1238.

Updated information and services can be found at:
<http://jcm.asm.org/content/38/3/1238>

These include:

REFERENCES

This article cites 15 articles, 2 of which can be accessed free at:
<http://jcm.asm.org/content/38/3/1238#ref-list-1>

CONTENT ALERTS

Receive: RSS Feeds, eTOCs, free email alerts (when new
articles cite this article), [more»](#)

Information about commercial reprint orders: <http://journals.asm.org/site/misc/reprints.xhtml>
To subscribe to to another ASM Journal go to: <http://journals.asm.org/site/subscriptions/>

Growth of *Cowdria ruminantium*, the Causative Agent of Heartwater, in a Tick Cell Line

LESLEY BELL-SAKYI,¹* EDITH A. PAXTON,¹ ULRIKE G. MUNDERLOH,² AND KEITH J. SUMPTION¹

Centre for Tropical Veterinary Medicine, University of Edinburgh, Edinburgh, Scotland, United Kingdom,¹
and Department of Entomology, University of Minnesota, St. Paul, Minnesota 55108²

Received 6 July 1999/Returned for modification 19 October 1999/Accepted 10 December 1999

The tick-borne rickettsia *Cowdria ruminantium* has been propagated continuously for over 500 days in the *Ixodes scapularis* tick cell line IDE8 by using the Gardel isolate from bovine endothelial cells as an inoculum. Infection of the tick cells was confirmed by PCR, karyotyping, electron microscopy, and reinfection of bovine cells.

Heartwater is a highly pathogenic, often fatal tick-borne rickettsial disease of domestic ruminants in sub-Saharan Africa and some Caribbean islands (5). Disease control in areas where the disease is endemic depends on intensive acaricide application and, in southern Africa, a live blood vaccine (17). Establishment of *Cowdria ruminantium* in bovine endothelial cell cultures (2) led to development of inactivated vaccines based on the elementary body (EB) stage of the organism (10, 11, 18), which, although safer than the blood vaccine, are less protective and more expensive to produce and still carry the risks of inducing immunity to bovine products and accidental pathogen transmission. Attempts to grow *C. ruminantium* in tick cells date back over 25 years (1, 19). Recently, in vitro cultivation of three related tick-borne rickettsiae, *Ehrlichia canis*, *Ehrlichia equi*, and *Anaplasma marginale*, has been achieved (6, 13, 14) in an *Ixodes scapularis* cell line, IDE8 (12), comprising actively phagocytic hemocyte-like cells with an ability to support growth in vitro of rickettsial species not normally transmitted by this tick in vivo. This paper describes the successful establishment and growth of *C. ruminantium* in the IDE8 cell line.

C. ruminantium (Gardel) (20) was maintained in Glasgow minimal essential medium–10% tryptose phosphate broth–10% newborn calf serum in bovine pulmonary artery endothelial cells (BPC) (15). The IDE8 cells were grown in L-15 (Leibovitz) medium–10% tryptose phosphate broth–5% fetal calf serum–0.1% bovine lipoprotein at 30±2°C (12). An IDE8 culture was inoculated with supernatant from an infected BPC culture containing extracellular *C. ruminantium* EB and immature morulae in association with dying endothelial cells and cell debris, incubated at 37°C overnight, and then returned to 30°C. On day 21 rickettsiae were seen in the extracellular matrix and in vacuoles in a few tick cells. By day 42, 7% of the tick cells were visibly infected, rising to 47% on day 70 (Fig. 1). Subculturing was carried out on day 51, when supernatant was centrifuged at 300 × g for 5 min to remove intact cells, and aliquots were added to each of two IDE8 cultures. Rickettsial inclusions became visible in the IDE8 subcultures within 12 days. A second subculture from the original IDE8 culture was prepared on day 66, when supernatant was transferred directly (without centrifugation and thus containing some intact cells) to a new IDE8 culture; rickettsiae were easily detected in this flask after 9 days. Further subculturing was carried out both as

described above and by dividing infected cultures. To date, the infected IDE8 cells have been growing continuously in vitro for over 500 days; they appear healthy, show growth rates comparable to those of uninfected cells, and exhibit very little obvious cytopathic effect, in contrast to *E. equi*-infected IDE8 cells (13) and *C. ruminantium*-infected BPC cultures. Infection rates can reach 50% but do not reach the very high levels reported for *A. marginale* in IDE8 cells (3). Typical spherical EB are not visible in stained preparations.

A PCR was carried out (16) on DNA extracted with a commercial kit (Qiagen) from uninfected and rickettsia-infected IDE8 cultures. The primer set consisting of HE1Cow (5' CAG TTA TTT ATA GCT TCG GCT ATA/G AGT ATC TG) and HE3[S] (5' GGT ACC GTC ATT ATC TTC CC) was used, designed for specificity at an annealing temperature of 55°C in PCR for amplification of *C. ruminantium* 16S rRNA gene sequences and an amplicon of 388 bp after 40 thermocycles of PCR. The results confirmed that *C. ruminantium* genomic DNA was present in the infected IDE8 culture and absent from the uninfected cells (Fig. 2).

Karyotyping of IDE8 cells from a culture with a 15% *C. ruminantium* infection rate was carried out (4) to confirm their tick origin. Chromosome numbers in 100 spreads ranged from 14 to 100, with peaks at 24 (14%) and 26 (14%). Karyotyping done previously on IDE8 cells yielded chromosome numbers ranging from 23 to 30, with a modal number of 28 in >60% of spreads (12). None of the spreads examined in the infected culture had 60 chromosomes, the diploid number for bovine cells (4), indicating that *C. ruminantium* was growing in IDE8 cells.

Samples from uninfected and *C. ruminantium*-infected IDE8 cultures were prepared for transmission electron microscopy by standard techniques. Uninfected IDE8 cells contained vacuoles and inclusions similar to those previously described as phagolysosomes (3, 13, 14). Infected IDE8 cells, however, also had membrane-lined vacuoles containing up to 50 rickettsial organisms 0.4 to 1.5 μm in diameter (Fig. 3 and 4). The organisms had double membranes and were polymorphic, reticulated, and apparently undergoing binary fission, resembling the stages described in nymphal and adult *Amblyomma* gut epithelium and salivary glands (7, 9). Some rickettsial colonies also contained tiny vesicles visible in the inter-rickettsial space (Fig. 3), as has been described for *A. marginale* and *E. equi* in IDE8 cells (3, 13, 14) or a homogeneous electron-dense inclusion body (Fig. 4) similar to those reported in infected ticks (7, 9). Electron-dense rickettsiae, considered the infective stage for mammalian endothelial cells in vitro (8), were not visible.

Infectivity in vitro of the original infected IDE8 culture and

* Corresponding author. Mailing address: Centre for Tropical Veterinary Medicine, University of Edinburgh, Easter Bush, Roslin, Midlothian EH25 9RG, Scotland, United Kingdom. Phone: 44-131-650-8814. Fax: 44-131-445-5099. E-mail: lsakyi@ed.ac.uk.

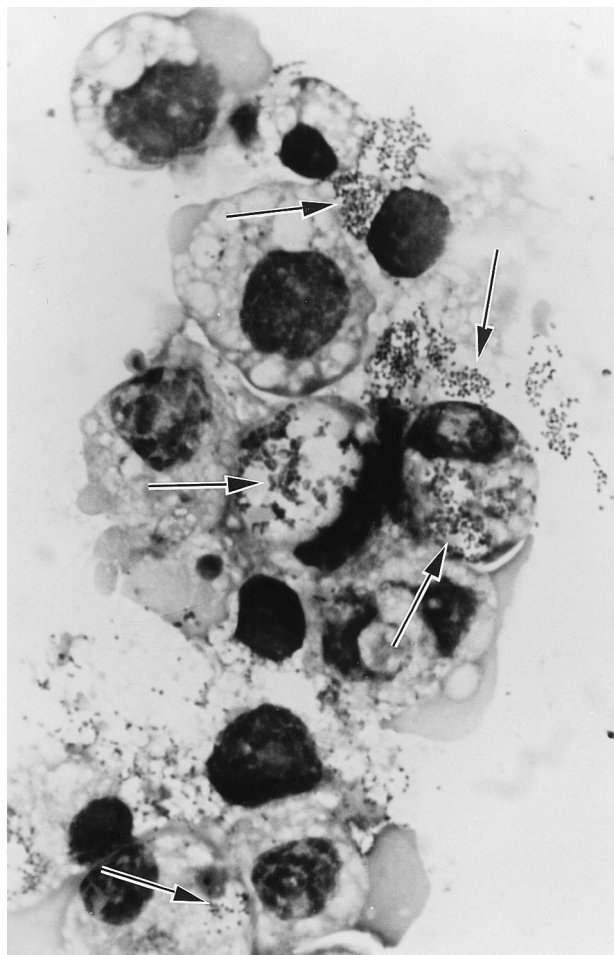


FIG. 1. Giemsa-stained cytocentrifuge smear of IDE8 cells on day 70 after inoculation with *C. ruminantium*, showing rickettsiae within cytoplasmic vacuoles and released from infected cells (arrows). Magnification, $\times 1,800$.

cultures with *C. ruminantium* at passage 2 was demonstrated 68 and 327 days after original inoculation by adding aliquots of supernatant or cell suspension to freshly confluent uninfected BPC; *C. ruminantium* infection was confirmed by visual examination, preparation and examination of cytocentrifuge smears,

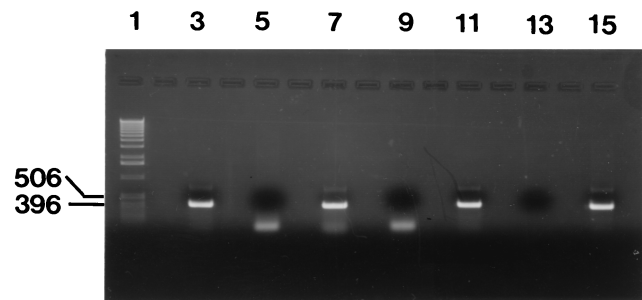


FIG. 2. Agarose gel (1%) electrophoresis of the PCR products amplified from DNA of BPC infected with rickettsiae derived from infected IDE8 cells (lane 3), uninfected IDE8 cells (lane 5), IDE8 cells infected with rickettsiae (lane 7), uninfected BPC (lane 9), BPC infected with *C. ruminantium* (Gardel) (lane 11), negative control distilled water (lane 13), and positive control *C. ruminantium* (Gardel) washed EB (lane 15). Molecular weight markers (lane 1) were a 1-kb ladder (Life Technologies).

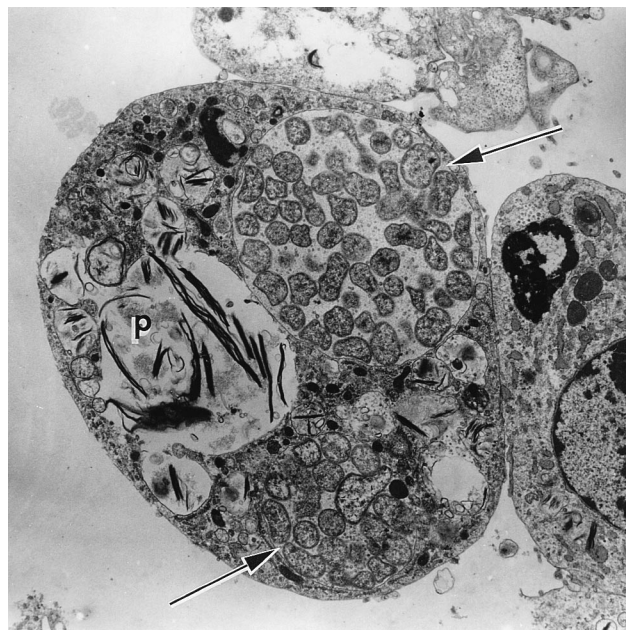


FIG. 3. Electron micrograph of a *C. ruminantium*-infected IDE8 cell showing reticulated organisms contained within membrane-lined cytoplasmic vacuoles (arrows), small interricketsial vesicles, and a phagolysosome (p). Magnification, $\times 5,750$.

PCR (Fig. 2), and subculture onto fresh BPC. Infected IDE8 cultures tested 49, 84, and 348 days after the original inoculation were not infective for BPC.

The lower infection rate for *C. ruminantium* compared with that for *A. marginale* in IDE8 cells (3) indicates a need to optimize the culture media and conditions for the tick cell-*C. ruminantium* system. The apparent absence of EB, the extra-



FIG. 4. Electron micrograph of a *C. ruminantium*-infected IDE8 cell showing reticulated organisms contained within cytoplasmic vacuoles (arrows) and an electron-dense inclusion body (b). Magnification, $\times 5,750$.

cellular stage produced in mammalian endothelial cell cultures, from the IDE8 cultures supports the view that development of *C. ruminantium* in tick cells is significantly different from that in cells of the ruminant host (9). However, since supernatant from infected IDE8 cultures was intermittently infective for BPC, either EB were developing occasionally in these cultures at levels too low to detect visually or EB are not the only stage of *C. ruminantium* infective for mammalian endothelial cells in vitro.

The successful establishment of *C. ruminantium* in tick cell culture provides an additional source of material for heartwater vaccination and diagnosis. As the mammalian culture system provided insight into the development of the organism in the ruminant host (8), use of tick cell cultures will lead to increased knowledge and understanding of *C. ruminantium* development in the vector. In the present-day climate of concern over accidental transmission of viruses and prions of animal origin, such as the bovine spongiform encephalopathy agent, into the food chain and ultimately to humans, the potential advantages of using tick cell lines to replace mammalian cell culture systems for propagation of vector-borne animal pathogens are considerable.

This work was supported by grant no. R6566 of the DFID/NRRD Animal Health Research Programme of the United Kingdom Government.

Electron microscopic processing and photography were carried out by Steve Mitchell, EM Unit, Department of Preclinical Veterinary Sciences, Royal (Dick) School of Veterinary Studies, University of Edinburgh, Scotland. C. G. D. Brown's critical comments on the manuscript are appreciated.

REFERENCES

1. **Andreasen, M. P.** 1974. Multiplication of *Cowdria ruminantium* in monolayer of tick cells. *Acta Pathol. Microbiol. Scand.* **82**:455–456.
2. **Bezuidenhout, J. D., C. L. Paterson, and B. J. H. Barnard.** 1985. *In vitro* cultivation of *Cowdria ruminantium*. *Onderstepoort J. Vet. Res.* **52**:113–120.
3. **Blouin, E. F., and K. M. Kocan.** 1998. Morphology and development of *Anaplasma marginale* (Rickettsiales: Anaplasmataceae) in cultured *Ixodes scapularis* (Acari: Ixodidae) cells. *J. Med. Entomol.* **33**:656–664.
4. **Brown, C. G. D.** 1979. Propagation of *Theileria*, p. 223–254. *In* K. Maramorosch and H. Hirumi (ed.), *Practical tissue culture applications*. Academic Press, New York, N.Y.
5. **Camus, E., N. Barre, D. Martinez, and G. Uilenberg.** 1996. Heartwater (cowdriosis): a review, 2nd ed. Office International des Epizooties, Paris, France.
6. **Ewing, S. A., U. G. Munderloh, E. F. Blouin, K. M. Kocan, and T. J. Kurtti.** 1995. *Ehrlichia canis* in tick cell culture. Proceedings of the 76th Conference of Research Workers in Animal Diseases, Chicago, USA, 13 to 14 November 1995. Iowa State University Press, Ames.
7. **Hart, A., K. M. Kocan, J. D. Bezuidenhout, and L. Prozesky.** 1991. Ultrastructural morphology of *Cowdria ruminantium* in midgut epithelial cells of adult *Amblyomma hebraeum* female ticks. *Onderstepoort J. Vet. Res.* **58**:187–193.
8. **Jongejan, F., T. A. Zandbergen, P. A. Van De Wiel, M. De Groot, and G. Uilenberg.** 1991. The tick-borne rickettsia *Cowdria ruminantium* has a *Chlamydia*-like developmental cycle. *Onderstepoort J. Vet. Res.* **58**:227–237.
9. **Kocan, K. M., and J. D. Bezuidenhout.** 1987. Morphology and development of *Cowdria ruminantium* in *Amblyomma* ticks. *Onderstepoort J. Vet. Res.* **54**:177–182.
10. **Mahan, S. M., H. R. Andrew, N. Tebele, M. J. Burrige, and A. F. Barbet.** 1995. Immunisation of sheep against heartwater with inactivated *Cowdria ruminantium*. *Res. Vet. Sci.* **58**:46–49.
11. **Martinez, D., J. C. Maillard, S. Coisne, C. Sheikboudou, and A. Bensaid.** 1994. Protection of goats against heartwater acquired by immunisation with inactivated elementary bodies of *Cowdria ruminantium*. *Vet. Immunol. Immunopathol.* **41**:153–163.
12. **Munderloh, U. G., Y. Liu, M. Wang, C. Chen, and T. J. Kurtti.** 1994. Establishment, maintenance and description of cell lines from the tick *Ixodes scapularis*. *J. Parasitol.* **80**:533–543.
13. **Munderloh, U. G., J. E. Madigan, J. S. Dumler, J. L. Goodman, S. F. Hayes, J. E. Barlough, C. M. Nelson, and T. J. Kurtti.** 1996. Isolation of the equine granulocytic ehrlichiosis agent, *Ehrlichia equi*, in tick cell culture. *J. Clin. Microbiol.* **34**:664–670.
14. **Munderloh, U. G., E. F. Blouin, K. M. Kocan, N. L. Ge, W. L. Edwards, and T. J. Kurtti.** 1996. Establishment of the tick (Acari: Ixodidae)-borne cattle pathogen *Anaplasma marginale* (Rickettsiales: Anaplasmataceae) in tick cell culture. *J. Med. Entomol.* **33**:656–664.
15. **Mutunga, M., P. M. Preston, and K. J. Sumption.** 1998. Nitric oxide is produced by *Cowdria ruminantium*-infected bovine pulmonary endothelial cells in vitro and is stimulated by gamma interferon. *Infect. Immun.* **66**:2115–2121.
16. **Ngumi, P. N.** 1997. Characterisation of *Cowdria ruminantium* (agent of heartwater infection) isolates from Kenya. Ph.D. thesis. University of Edinburgh, Scotland.
17. **Oberem, P. T., and J. D. Bezuidenhout.** 1987. The production of heartwater vaccine. *Onderstepoort J. Vet. Res.* **54**:485–488.
18. **Tafesse, B.** 1992. Studies on the immunisation of goats and mice against heartwater with inactivated preparation of *Cowdria ruminantium* (Cowdria 1925). M.S. thesis. University of Edinburgh, Edinburgh, Scotland.
19. **Uilenberg, G.** 1983. Heartwater (*Cowdria ruminantium* infection): current status. *Adv. Vet. Sci. Comp. Med.* **27**:427–480.
20. **Uilenberg, G., E. Camus, and N. Barre.** 1985. Quelques observations sur une souche de *Cowdria ruminantium* isolée en Guadeloupe (Antilles françaises). *Rev. Elev. Med. Vet. Pays Trop.* **38**:34–42.