



THE UNIVERSITY *of* EDINBURGH

Edinburgh Research Explorer

Myelination and axonal electrical activity modulate the distribution and motility of mitochondria at CNS nodes of Ranvier

Citation for published version:

Ohno, N, Kidd, GJ, Mahad, D, Kiryu-Seo, S, Avishai, A, Komuro, H & Trapp, BD 2011, 'Myelination and axonal electrical activity modulate the distribution and motility of mitochondria at CNS nodes of Ranvier' *Journal of Neuroscience*, vol. 31, no. 20, pp. 7249-58. DOI: 10.1523/JNEUROSCI.0095-11.2011

Digital Object Identifier (DOI):

[10.1523/JNEUROSCI.0095-11.2011](https://doi.org/10.1523/JNEUROSCI.0095-11.2011)

Link:

[Link to publication record in Edinburgh Research Explorer](#)

Document Version:

Peer reviewed version

Published In:

Journal of Neuroscience

Publisher Rights Statement:

Published in final edited form as:
J Neurosci. 2011 May 18; 31(20): 7249–7258.
doi: 10.1523/JNEUROSCI.0095-11.2011

General rights

Copyright for the publications made accessible via the Edinburgh Research Explorer is retained by the author(s) and / or other copyright owners and it is a condition of accessing these publications that users recognise and abide by the legal requirements associated with these rights.

Take down policy

The University of Edinburgh has made every reasonable effort to ensure that Edinburgh Research Explorer content complies with UK legislation. If you believe that the public display of this file breaches copyright please contact openaccess@ed.ac.uk providing details, and we will remove access to the work immediately and investigate your claim.





Published in final edited form as:

J Neurosci. 2011 May 18; 31(20): 7249–7258. doi:10.1523/JNEUROSCI.0095-11.2011.

Myelination and axonal electrical activity modulate the distribution and motility of mitochondria at CNS nodes of Ranvier

Nobuhiko Ohno*, Grahame J. Kidd*, Don Mahad*, Sumiko Kiryu-Seo*, Amir Avishai†, Hitoshi Komuro*, and Bruce D. Trapp*

*Department of Neurosciences, Lerner Research Institute, Cleveland Clinic, Cleveland, OH 44195

†Department of Materials Science and Engineering, Case Western Reserve University, 10900 Euclid Ave, Cleveland, OH, 44106

Abstract

Energy production presents a formidable challenge to axons as their mitochondria are synthesized and degraded in neuronal cell bodies. To meet the energy demands of nerve conduction, small mitochondria are transported to and enriched at mitochondrial stationary sites located throughout the axon. In this study, we investigated whether size and motility of mitochondria in small myelinated central nervous system axons was differentially regulated at nodes, and whether mitochondrial distribution and motility are modulated by axonal electrical activity. The size/volume of mitochondrial stationary sites was significantly larger in juxtaparanodal/internodal axoplasm than in nodal/paranodal axoplasm. By 3-dimensional electron microscopy, we observed that axonal mitochondrial stationary sites were composed of multiple mitochondria of varying length, except at nodes where mitochondria were uniformly short and frequently absent altogether. Mitochondrial transport speed was significantly reduced in nodal axoplasm when compared to internodal axoplasm. Increased axonal electrical activity decreased mitochondrial transport and increased the size of mitochondrial stationary sites in nodal/paranodal axoplasm. Decreased axonal electrical activity had the opposite effects. In cerebellar axons of the myelin deficient rat, which contains voltage-gated Na⁺ channel clusters but lacks paranodal specializations, axonal mitochondrial motility and stationary site size were similar at Na⁺ channel clusters and other axonal regions. These results demonstrate juxtaparanodal/internodal enrichment of stationary mitochondria and neuronal activity-dependent dynamic modulation of mitochondrial distribution and transport in nodal axoplasm. In addition, the modulation of mitochondrial distribution and motility requires oligodendrocyte-axon interactions at paranodal specializations.

Keywords

myelination; mitochondria; axonal transport; node of Ranvier; action potential

Introduction

Myelination affects the function and morphology of axons. By confining voltage-gated Na⁺ channels in the nodal axolemma, myelination facilitates rapid nerve conduction in an energy efficient manner (Ritchie JM, 1995; Waxman SG, 1995). Myelinated fibers can be divided into four morphologically and biochemically distinct segments (nodes, paranodes,

juxtaparanodes and internodes) (Poliak and Peles, 2003; Trapp and Kidd, 2004). Nodes are the short unmyelinated axonal segments enriched for voltage-gated Na⁺ channels, located between adjacent myelin internodes. Nodes are flanked by paranodes, where adhesion molecules form septate-like junctions that tether the myelin sheath to the axon (Bhat, 2003; Peles and Salzer, 2000). Juxtaparanodal axolemma is the ~15µm region adjacent to the paranodes, and is enriched for Na⁺/K⁺ ATPases and voltage-gated K⁺ channels (Mata et al., 1991; Waxman SG, 1995; Young et al., 2008). The remaining, internodal region, includes the majority of the myelinated fiber and also contain Na⁺/K⁺ ATPase. Following activation of nodal Na⁺ channels, the Na⁺/K⁺ ATPases rapidly exchange axoplasmic Na⁺ for extracellular K⁺ in an energy-dependent manner to permit repetitive firing of axons. Based upon the presence of Na⁺/K⁺ ATPases and their close proximity to nodes (Young et al., 2008), juxtaparanodal regions of central nervous system (CNS) myelinated fibers appear to have the greatest potential for energy utilization during saltatory nerve conduction.

Mitochondria are the major source of axonal ATP required for repetitive propagation of action potentials by saltatory conduction. Mammalian axons can extend a meter or more from their neuronal cell bodies where the bulk of mitochondria are formed and degraded (Chang and Reynolds, 2006). The bulk of axonal mitochondria are located at stationary sites, axoplasmic areas occupied by single or multiple mitochondria that do not move during the timeframe of imaging studies (Morris and Hollenbeck 1995; Miller and Sheetz, 2004; Misgeld et al., 2007; Kiryu-Seo et al., 2010). The stationary sites are distributed throughout the axon and are thought to be enriched at areas of high energy consumption (Chang and Reynolds, 2006; Hollenbeck and Saxton, 2005; Miller and Sheetz, 2004). A less abundant pool of small motile mitochondria is transported to and from the neuronal cell body and stationary sites. Motile mitochondria may fuse with stationary mitochondria and facilitate stationary mitochondrial growth and/or turnover. Older dysfunctional segments of stationary mitochondria are removed by fission and degraded (Twig et al., 2008; Chang and Reynolds, 2006). To meet increased energy demands of nerve conduction, the size of stationary sites and the speed of mitochondria transport are significantly increased following demyelination of axons (Kiryu-Seo et al., 2010). In addition, the speed of mitochondrial transport in amphibian peripheral nervous system (PNS) nodal axoplasm is decreased by neuronal activity in a Ca²⁺-mediated manner (Zhang et al., 2010). However, knowledge of mitochondrial distribution, motility and dynamics in myelinated axons is limited and whether stationary mitochondria are enriched at nodes of Ranvier and/or modulated by electrical activity remains to be established.

We used mitochondria-targeted DsRed2 and confocal time-lapse imaging in organotypic slice cultures to examine mitochondrial behavior in myelinated Purkinje cell axons under basal, enhanced or inhibited neuronal activity. We also investigated the three-dimensional distribution and ultrastructure of mitochondria in cerebellar and optic nerve myelinated axons *in vivo*. Our results establish a juxtaparanodal-internodal enrichment of mitochondrial stationary sites and a neuronal activity-dependent modulation of mitochondrial distribution and transport in nodal axoplasm. In addition, focal modulation of mitochondrial distribution and transport was absent from axons containing voltage-gated Na⁺ channel clusters but lacking paranodal specializations.

Materials and Methods

Slice culture preparation, transfection of lentiviral vectors

Lentivirus with mitochondrial-targeted DsRed2 and GCaMP3 was prepared using a pLenti6/V5 Directional TOPO Cloning Kit according to the manufacturer's protocol (Invitrogen, Carlsbad, CA) with slight modifications (Hirai, 2008). Briefly, 293FT cells were transfected with pLentiV5/6 lentiviral vector including Mito-DsRed2 (Clontech, Mountain View, CA,

USA) or GCaMP3 (Addgene, Cambridge, MA) and packaging plasmids. The medium was changed 4hrs after the transfection. Viral supernatants were collected 24hrs after the transfection, filtered with 0.22 μ m PVDF membrane (Millipore, Billerica, MA, USA), and centrifuged at 100,000g for 2hrs. The viral pellet was resuspended in 1/100 volume of PBS. Cerebellar organotypic slice cultures from male P10 Sprague-Dawley and md rats were cut at a thickness of 150-200 μ m, as described previously (Stoppini et al., 1991). Slices from P10 pups were chosen because Purkinje cells survive and their axons undergo robust myelination (Dusart et al., 1997). The slices were cultured on Millicell organotypic culture inserts (Millipore, Billerica, MA, USA) in 6-well plates containing 50% minimal essential medium, 25% horse serum, 25% HBSS, 6mg/ml D-glucose, 1 \times Glutamax (Invitrogen) and penicillin/streptomycin. Two hours after plating, the lentiviral vectors were injected into the Purkinje cell layer using a glass microinjection needle (Kasri et al., 2008).

Time-lapse imaging by confocal microscopy

Purkinje cell axons with DsRed2-positive mitochondria or cell bodies with GCaMP3 were imaged by confocal microscopy as reported previously (Kiryu-Seo et al., 2010; Kumada et al., 2006). Glass-bottom dishes with culture medium and pieces of Millicell membrane with attached slices were transferred into the chamber of a micro-incubator (PDMI-2; Medical System Corp. Nussloch, Germany) attached to an inverted laser-scanning confocal microscope (TCS SP, Leica, Nussloch, Germany). The slices were illuminated with 488 or 543 nm light through a 63 \times oil-immersion objective (NA=1.32, Leica, Nussloch, Germany) and transmitted light and fluorescence signals detected. Images of mitochondria were collected at 1024 \times 1024 pixel resolution every 6 sec. Imaging at 6 sec intervals did not induce mitochondrial fragmentation, acute mitochondrial swelling, or cessation of axonal transport in 50+ experiments and cell bodies and axons remained healthy 3 days after imaging. We also restricted total observation time at less than 20min to minimize the possibility of phototoxic damage to the cells. In some experiments, bath application of 1 μ M tetrodotoxin (TTX; Sigma, St. Louis, MO, USA) or 10 μ M bicuculline methobromide (BCC; Alexis Biochemicals, San Diego, CA, USA) was applied 15 min before live imaging.

Kymographs of mitochondria in time lapse images were produced using ImageJ, as described previously (Miller and Sheetz, 2004). Motile mitochondria were identified as moving objects in movies and diagonal lines in the kymographs. Mean velocity of motile mitochondria was measured by dividing total displacement distance by total time in nodal (\pm 10 μ m from nodes) and internodal (20~40 μ m from nodes) axoplasm. Within this 20 μ m-long axoplasmic region, peak velocity of a mitochondrion was defined as maximum velocity for specific 5 μ m-long regions, and turn frequency was measured as described previously (Morris and Hollenbeck, 1993; Wang and Schwarz, 2009). Stationary mitochondria were identified as profiles without any displacement during the timeframe of our *in vitro* imaging studies and as vertical lines on the kymographs. The pixel areas and lengths of DsRed2-positive profiles were measured with ImageJ software after thresholding. In measurements of stationary mitochondria, one representative frame was used after excluding out-of-focus regions and motile profiles. Variations in mitochondria stationary sites in nodal/paranodal, juxtapanodal and internodal axoplasm were established for individual axons by normalizing mitochondria size to the average mitochondria size for that axon. Caspr immunostaining established the location of the paranodal/nodal axoplasm (see Fig 2b').

For GCaMP3 imaging analyses, the time-lapse changes of fluorescent intensity in Purkinje cell bodies before and after drug treatments were measured using ImageJ with Time Series Analyzer V2.0 (<http://rsbweb.nih.gov/ij/plugins/time-series.html>). The cell bodies were traced and mean fluorescent intensity in the cell bodies was measured. Frequency of Ca²⁺ transients was defined as the number of increase of fluorescent intensity ($\Delta F/F > 0.2$), and amplitude of Ca²⁺ transients was defined as peak $\Delta F/F$ of each Ca²⁺ transients.

Immunohistochemistry

For direct correlation of time-lapse images and immunostaining for nodal/paranodal markers, the observed slices were fixed with 4% paraformaldehyde in 0.1M phosphate buffer for 3hrs immediately after live imaging. The slices were immunostained as previously described (Kiryu-Seo et al., 2010) with the following antibodies; rat anti-PLP (Agmed, Bedford, MA, USA), mouse anti-pan Nav (Sigma), mouse anti-Caspr1 (generous gift from James S. Trimmer, University of California, Davis, CA, USA). Immunostaining was visualized with secondary antibodies conjugated with Alexa 488 or 647 (Invitrogen) and by confocal microscopy (SP5, Leica, Nussloch, Germany).

Mitochondrial sizes in node-paranodal regions in fixed tissues

Slice cultures at DIV14 with DsRed-positive Purkinje cells were treated with TTX, BCC, and BCC in combination with 10 μ M BAPTA-AM, 5mM EGTA or 1 μ M ω -conotoxin MVIIC for 1hr, fixed with 4% paraformaldehyde for 3hrs, and immunostained for Caspr and PLP as described above. Caspr immunostaining defined the boundaries of the paranodal/nodal axoplasm (see Fig 2b') and nodal-paranodal axoplasmic area and their DsRed profiles were measured in stacked images.

Serial Ion Ablation Scanning Electron Microscopy (3D-EM)

Tissue preparation and imaging were performed as previously described (Knott et al., 2008; Kidd et al., 2010). Rats and mice were perfused at postnatal day 30 with cacodylate buffered 2.5% glutaraldehyde and 4% paraformaldehyde. Rat cerebellar white matter (3 rats) was removed, post-fixed with 1% tannic acid and stained with buffered 0.4% OsO₄ followed by aqueous uranyl acetate, and then embedded in Durcupan resin. Mouse optic nerves were treated with OsO₄-ferricyanide, followed sequentially by thiocarbohydrazine, aqueous OsO₄, aqueous uranyl acetate, and then Walton's lead aspartate stain and then embedded in Durcupan resin (Deerinck et al., 2010). Blocks were trimmed in a Leica ultramicrotome and longitudinally oriented white matter tracts were identified in 1 μ m-thick sections. Samples were imaged using either Nova-200 Nanolab or Helios 650 Dual Beam FIB (FEI) systems using G2 or G3 "Slice&View" operating software, and serial images of the block face was generated by repeated cycles of milling (i.e. sample surface ablation) and imaging. Milling was performed with a 1nA ion beam current. Images were acquired using a 2kV (21-84 pA) beam in high-resolution mode (immersion lens) using the through lens detector in backscattered electron mode. Sets of 250-500 images at ~40 nm steps (i.e. milling depth) were obtained either at 6.5 or 17 nm/pixel resolution, producing images ~13 \times 17 μ m or 35 \times 45 μ m and 8-20 μ m deep. These imaging conditions were chosen to maximize axon sample length while still discerning individual mitochondria. At the lower resolution (17 nm/pixel) individual mitochondria were identified as oval or cigar-shaped organelles (~0.1 μ m or greater in diameter) with stained matrix and unstained cristae cisternae. Each mitochondrion was present in several serial sections, which greatly enhanced their ultrastructural identification. At high resolution (6.5nm/pixel), classic mitochondrial membranes and structure were evident in all sections. Images were registered, corrected for aspect ratio, and derivative stacks were generated using ImageJ/FIJI software. Mitochondria and axons were traced and analyzed using Reconstruct software (Fiala, 2005), with paranodal and nodal axoplasm traced separately to provide accurate volumes. Where necessary, compensation for slice thickness disparity was made using the method of Fiala and Harris (Fiala and Harris, 2001). Distances and distributions were measured directly or calculated using 3D distance formulae. Axonal diameters were calculated from length and volume data assuming axons, nodal and paranodal axoplasm were cylinders, and mitochondria were cylinders with a hemisphere at either end ("cigar-shaped"). Montage images were constructed from multiple single slices through the same axon (Kidd and Heath, 1988).

Statistical analysis

Statistical analysis was performed using SigmaStat (Aspire Software International, Ashburn, VA). Data were presented as mean + s.e.m. or median with first and third quartile. Comparisons were made using the Mann-Whitney *U* test for rates of motile mitochondria, mitochondrial volume, mitochondrial/axonal volume ratio and length of stationary mitochondria, and two-tailed Student's *t*-test for number of motile mitochondria, sizes of DsRed2 profiles and % nodal-paranodal axoplasm area occupied by DsRed. Multiple comparisons were made with Bonferroni correction. Time-lapse images were obtained from at least 10 slices from 5 rats for each group. Data describing the % nodal-paranodal axoplasm area occupied by DsRed were obtained from at least 5 slices from 3 rats for each group.

Results

Mitochondrial motility and distribution in myelinated axons

Mitochondrial distribution and motility were monitored in live myelinated rat Purkinje cell axons in cerebellar organotypic slice cultures obtained from P10 rat pups. The slices were transfected with lentiviral vectors carrying mitochondria-targeted DsRed2 and then maintained *in vitro* for 14 days (Fig. 1a). Mito-DsRed2 is a soluble red fluorescent DsRed2 protein fused with a cleavable mitochondria-targeting sequence from cytochrome c oxidase subunit VIII and targeted to the mitochondrial matrix. DsRed2 was colocalized with all axonal mitochondria immunopositive for cytochrome c oxidase subunit I (data not shown). By 10 days *in vitro* (DIV), white matter tracts, which contain myelinated Purkinje cell axons (Birgbauer et al., 2004), were macroscopically visible in the slice cultures (Fig. 1b). The lentivirus specifically infected a small percentage of Purkinje cells (Fig. 1d, arrowhead), which project single DsRed2-positive axons into the white matter tracts (Fig. 1d, arrows). To identify the direction of mitochondrial movement, we followed Purkinje cell axons from the soma and time-lapse images of DsRed2 distribution and motility were acquired. In these axons, 82% of the DsRed2-positive mitochondrial profiles were stationary. Motile mitochondrial movement was bidirectional and characterized by velocity changes and occasional cessation of transport (Hollenbeck, 1996). The median velocity of mitochondrial movement was 0.25 $\mu\text{m}/\text{sec}$ (mean \pm s.e.m = 0.36 \pm 0.4) in the anterograde direction and 0.23 $\mu\text{m}/\text{sec}$ (mean \pm s.e.m = 0.33 \pm 0.4) in the retrograde direction, comparable to axonal transport rates reported previously in unmyelinated CNS axons (e.g. (Morris and Hollenbeck, 1993; Wang and Schwarz, 2009)) and myelinated PNS axons (Kiryu-Seo et al., 2010). Multiple motile mitochondria often stopped or slowed at single axonal sites.

To identify the site of slowed mitochondrial motility, kymographs of mitochondrial distribution and motility were obtained by time-lapse imaging. Slices were then fixed and immunostained for proteins exclusively localized to nodal (pan-Na⁺ channel: Nav), paranodal (contactin associated protein: Caspr), and internodal (proteolipid protein: PLP) segments of myelinated fibers. Time-lapse images of mitochondrial distribution and movement were co-registered with nodal, paranodal, juxtaparanodal and internodal segments of the myelinated axons (Fig. 1a, e-g). These analyses established that motile axonal mitochondria stopped or slowed down preferentially in node-paranodal axoplasm (i.e. \pm 10 μm from nodes) of myelinated CNS fibers (Fig. 1g), and that the mean velocity in node-paranodal axoplasm was reduced \sim 60% compared to that in internodal axoplasm (i.e. \pm 20-40 μm away from nodes) (Fig. 2a). Peak velocity and turn frequency were similar in nodal and internodal regions (data not shown).

We next compared the area occupied by mitochondrial stationary sites and the length of each stationary site in node-paranodal, juxtaparanodal and internodal axoplasm (Fig. 2b).

The size of stationary mitochondrial sites in juxtaparanodal and internodal axoplasm were similar at proximal and distal sides of the node (Fig. 2b'). In contrast, stationary mitochondrial sites in node-paranodal axoplasm had approximately half the volume (Fig. 2c) and were ~30% shorter (Fig. 2d) than those in juxtaparanodal and internodal axoplasm. In addition, the volume of mitochondrial stationary sites was greater in juxtaparanodal axoplasm than in internodal axoplasm (Fig. 2c). These results demonstrate juxtaparanodal and internodal enrichment of axonal stationary mitochondrial sites and slowing of mitochondria transport in node-paranodal axoplasm.

Ultrastructural Distribution of Mitochondria In Vivo

To investigate mitochondrial distribution in cerebellar axons *in vivo*, we used serial ion ablation scanning electron microscopy (three-dimension electron microscopy, 3D-EM) to study P30 rat cerebellar white matter axons (Kiryu-Seo et al., 2010; Knott et al., 2008; Kidd et al., 2010). We selected P30 because the extent of myelination at this age *in vivo* is comparable to that in organotypic slice culture at DIV14 used in time-lapse imaging. Three-dimensional reconstructions were generated for 54 axons (0.6-1.7 μm diameter, ~35 μm long segments), including 21 internodal (Fig 3a,b) and 33 nodal regions (Fig 3c,d) and 624 mitochondria from 3 rats. Axonal mitochondria were typically elongated; they varied in length from 0.3-13 μm (Fig 3e) but had diameters of ~0.1 - 0.4 μm . Most mitochondria (57%, Fig 3e) were shorter than 1.5 μm , but longer mitochondria accounted for a majority of the total axonal mitochondrial volume (68%; Fig 3f), with the longest 10% representing >30% of axonal mitochondrial volume. Mitochondrial sizes were not normally distributed. In adjacent oligodendrocyte and astrocyte somata, mitochondria often formed multi-lobed, branching arrangements (not shown) as described in other cell types (Scheffler, 2008). In contrast, less than 0.5% of axonal mitochondria branched. Axonal mitochondria were not evenly distributed along myelinated axons. Within internodal axoplasm, mitochondria often had overlapping distributions within the same axon territory (Fig 3b,d). When quantified, 85.7% of mitochondria were present in clusters containing 2 -11 mitochondria; 14.3% (± 2.1 s.e.m) of mitochondria had non-overlapping distributions (Fig 3g). The average length of axonal domains occupied by mitochondria, both clustered and isolated, was 3.75 μm (± 0.21 s.e.m.), which was similar to the lengths of stationary sites measured in internodal regions in slice cultures imaged by confocal microscopy (3.2 μm , ± 0.20 s.e.m). Stationary sites *in vitro* occupied 63% of the axonal length, compared with 62.7% of the axon in 3D reconstructions *in vivo*. Mitochondria with overlapping distributions rarely contacted each other, indicating that mitochondrial clustering at stationary sites does not require mitochondria-mitochondria contacts.

Substantial differences were observed between mitochondrial sizes in the node-paranodal axoplasm and juxtaparanodal/internodal axoplasm. Internodal and juxtaparanodal axoplasm contained the full range of mitochondrial sizes, with lengths varying from ~0.3 μm to 13.2 μm (median 1.4 μm , Fig 3h), and volumes from 0.008 - 1.652 μm^3 (median 0.088 μm^3 , Fig 3i). In nodal axoplasm, the largest mitochondrion was only 1.9 μm long. Both nodal and paranodal mitochondria were substantially shorter and smaller in volume than those in juxtaparanodal/internodal axonal regions ($p < 0.001$; Figs 3h,i). Nodal mitochondria were also slightly smaller in diameter (median 0.21 μm in node vs 0.28 in juxta/internode, $p < 0.001$ Mann Whitney U test). Mitochondrial presence in nodal axoplasm was highly variable; 39% contained no mitochondria, 40% had a single mitochondrion, and 21% had 2-5 mitochondria ($n = 33$ axons). Ratios of mitochondrial volume to axonal volume have been frequently used to compare the concentration of mitochondria in different axonal regions. In P30 cerebellar nodal axoplasm, the percentage of axonal volume occupied by mitochondria (mV/aV) values varied extensively (Fig 3j, median 3.5%), which is expected considering 39% of nodes had no mitochondria and 21% had multiple mitochondria. In addition, the

reduced axonal volume at the node skewed the ratios for the 61% of nodes containing mitochondria toward higher mean values compare to juxtaparanodal and internodal axoplasm. Due to the large variability in nodal mV/aV values (median 3.5%) they were not significantly different from internodal values (Fig 3j). Paranodal axoplasm mV/aV values (median 3.3%), however, showed less variation and were significantly reduced compared with juxtaparanodal (median 7.4%) and internodal (median 5.7%) regions (Fig 3j; $p < 0.001$, Mann Whitney U test). These results indicate that mitochondrial size and presence are differently regulated in nodal and paranodal axoplasm compared with juxtaparanodal and internodal axoplasm.

To test whether these results were due to species-specific or tract-specific properties of cerebellar white matter axons, we also examined P30 mouse optic nerve axons, using a staining regime that enhances membrane contrast. As illustrated in Fig 3k, optic nerve axons at P30 were of a similar dimension to those in cerebellar white matter (0.6-1.6 μm diameter). Optic nerve mitochondria were longer (median length 1.54 μm vs 1.27 μm in cerebellum; $p < 0.016$, $n = 173$ vs 624) and larger (median volume 0.12 μm^3 vs 0.08 μm^3 in cerebellum; $p < 0.003$) than those in cerebellum, but the differences in the two populations were not extensive. Internodal mitochondria had overlapping distributions that were similar in length to mitochondrial clusters in cerebellar axons, indicating that stationary sites were also common in optic nerve axons. A survey of 21 optic nerve nodes indicated that only a third had mitochondria at nodal axoplasm (Fig. 3l), which is consistent with a previous stereological study that reported a lack of mitochondria in the majority of nodes in P60 mouse optic nerve (Edgar et al., 2008).

Neuronal activity modulates mitochondria in nodal axoplasm

Previous studies suggested that neuronal activation reduces mitochondrial motility and recruits mitochondria to metabolically active regions, such as pre-synaptic terminals (Li et al., 2004; Macaskill et al., 2009). In addition, increased electrical activity slows mitochondrial motility in nodal axoplasm of amphibian myelinated PNS axons (Zhang et al., 2010). To investigate whether axonal electrical activity modulates the distribution or motility of mitochondria in myelinated CNS axons, we treated slice cultures with either tetrodotoxin (TTX), which blocks voltage-dependent Na^+ channels and eliminates axonal action potentials, or bicuculline (BCC), which blocks GABA_A receptors, suppresses inhibitory postsynaptic currents and increases electrical activity of Purkinje cells in slice cultures (Dupont et al., 2006; Gahwiler, 1975). To confirm whether these drugs modulate Purkinje cell electrical activity, we transfected Purkinje cells (DIV0) with a lentiviral vector carrying the protein-based Ca^{2+} indicator, GCaMP3 (Tian et al., 2009) (Fig 4a) and measured the frequency and amplitude of Ca^{2+} transients ($\Delta F/F > 0.2$) (Fig. 4b-d) before and after treatment with TTX (Fig. 4e) or BCC (Fig. 4f) at DIV14. TTX treatment decreased and BCC treatment increased the frequency (Fig. 4g) and amplitude (not shown) of Purkinje cell Ca^{2+} transients, confirming previous studies which reported decreased and increased axonal firing following the treatment of cerebellar slices with TTX and BCC (Khaliq and Raman, 2005; Khaliq and Raman, 2005).

Following 15 minutes of TTX treatment, motile mitochondria stopped or slowed less frequently in node-paranodal axoplasm (Fig. 4h-h"). As a result, the number of motile mitochondria in node-paranodal axoplasm increased and the mean mitochondrial speeds were significantly greater in electrically silent than in electrically active control cultures (Fig. 4j, k). In addition, TTX treatment significantly decreased the total size of mitochondria stationary sites in node-paranodal axoplasm (Fig. 4l). Conversely, following 15 minutes of BCC treatment, the number of motile mitochondria and the mean velocity of mitochondrial transport were decreased in nodal axoplasm, but not in internodal axoplasm (Fig. 4i-i", j, k). Furthermore, BCC treatment increased the total size of mitochondrial stationary sites in

node-paranodal axoplasm, but not in juxtaparanodal (Fig. 4l) and internodal axoplasm (data not shown). These studies support the concept that increased axonal firing focally increases mitochondrial stationary site size and decreases mitochondrial motility in node-paranodal axoplasm.

The recruitment and function of mitochondria at synaptic terminals depends on Ca^{2+} (Li et al., 2004; Macaskill et al., 2009; Pardo et al., 2006) and Ca^{2+} regulates the electrical activity-dependent decrease of mitochondrial motility in nodal axoplasm of amphibian PNS myelinated fibers (Zhang et al., 2010). Since it is most likely that stationary mitochondria are the major source of axonal ATP, we examined if neuronal activity-dependent changes of mitochondrial stationary site size in node-paranodal axoplasm are modulated by Ca^{2+} . In these analyses, we measured the percent axonal area occupied by mitochondria in node-paranodes to exclude the possibility that the differences of mitochondrial sizes are simply due to possible variance of node-paranodal axonal volume. Following TTX treatment, the % node-paranodal axonal area occupied by mitochondria was decreased (Fig. 4m). Conversely, following BCC treatment, the % node-paranodal axonal area occupied by mitochondria was significantly increased (Fig. 4m). When slices were treated with BCC in combination with BAPTA-AM (intracellular Ca^{2+} chelator), EGTA (Ca^{2+} chelator) or ω -conotoxin MVIIC (OC; P/Q- and N-type Ca^{2+} channel blocker), mitochondrial stationary site sizes in node-paranodal axoplasm were significantly smaller compared with BCC treatment alone (Fig. 4m). The mitochondrial stationary site sizes in node-paranodal axoplasm following TTX and ω -conotoxin treatment were similar to those following TTX treatment alone (data not shown). Given that voltage-dependent Ca^{2+} channels are expressed in myelinated axons (Alix et al., 2008; Hillman et al., 1991), these results establish that increased axoplasmic Ca^{2+} mediates increased stationary mitochondrial size in node-paranodal axoplasm upon neuronal activation.

Mitochondrial motility and distribution in myelin-deficient rats

To investigate the role of oligodendrocyte-axon interactions in axonal mitochondrial behavior, we established cerebellar organotypic slice cultures from P10 myelin-deficient (md) rats and transfected Purkinje cells with DsRed2 targeted to mitochondria. In md rats, oligodendrocytes ensheath axons but fail to form normal compact myelin due to a point mutation in the PLP gene (Boison and Stoffel, 1989; Csiza and de Lahunta A., 1979). Md rat oligodendrocyte processes, however, ensheath axons and concentrate voltage-gated Na^+ channel in the axolemma. Due to the lack of myelin, paranodal loops do not form and the distribution of the paranodal septate junction molecules Caspr and contactin as well as saltatory conduction are significantly altered (Arroyo et al., 2002; Utzschneider et al., 1994; Waxman et al., 1990). In md rat cerebellar organotypic slice cultures, voltage-gated Na^+ channels were clustered at discrete axonal locations despite a paucity of PLP-positive ensheathment of Purkinje cell axons. In these axons, the mean velocity of axonal mitochondrial transport (Fig. 5a-c) was similar at regions of Na^+ channel clusters (20 μm -long segment centered by the Na^+ -channel clusters) and in internodal axoplasm (20-40 μm s from the Na^+ -channel clusters) (Fig. 5d). In addition, mean velocities of axonal mitochondrial transport were similar in node-like axoplasm and other axonal regions following 15 minutes of BCC treatment (data not shown). We next examined the distribution of axonal mitochondria in md rats. Consistent with a previous report (Dentinger et al., 1985), mitochondrial stationary sites in md rat axons were larger than those found in wild type myelinated axons, including total ($p < 0.05$) and node-like axoplasm ($p < 0.001$) (Fig. 5e). In addition, stationary sites were similar in volume and length in node-like and other axonal regions of md axons (Fig. 5f, g). The focal modulation of mitochondrial transport and distribution in node-paranodal axoplasm appear to require oligodendrocyte-axon interaction at paranodal specializations.

Discussion

The present study describes fundamental properties of mitochondrial distribution and motility in myelinated CNS axons. Time-lapse imaging *in vitro* and three dimensional ultrastructural reconstructions *in vivo* establish that >90% of axonal mitochondria are present in internodal stationary sites, which consist of multiple mitochondria that vary in length but not in diameter. In contrast, mitochondria in nodal and paranodal axoplasm were consistently small. In myelinated axons from rat cerebellum and mouse optic nerves, mitochondria were not enriched in nodal axoplasm and were absent from 39% (cerebellum) and 66% (optic nerve) of nodes examined. Increased axonal firing, however, increased mitochondrial stationary site size and decreased the transport speed of mitochondrial transport in nodal/paranodal but not internodal axoplasm. In these small diameter fibers, mitochondria are not enriched nor do they appear to be an absolute requirement for the nodal axoplasm. The presence of mitochondria in nodal axoplasm, however, is dynamic and increases in response to axonal electrical activity coupled to increased axoplasmic Ca^{2+} .

Cerebellar organotypic slice cultures provide several advantages for investigating mitochondrial behavior in myelinated axons. As described previously (Birgbauer et al., 2004; Ross et al., 1962), myelination is abundant and we show here that nodes of Ranvier can be reliably co-registered in kymographs of living tissues and immunostained fixed images. Purkinje cells can be selectively transfected with lentiviral vectors and their electrophysiological properties, including their response to TTX and BCC, have been described in detail (Dupont et al., 2006; Gahwiler, 1975; Kessler et al., 2008). The size and distribution of mitochondrial stationary sites in unmyelinated axons was consistent with previous studies (Hollenbeck, 1996; Miller and Sheetz, 2004; Morris and Hollenbeck, 1993; Wang and Schwarz, 2009; Zhang et al., 2010), and stationary sites in myelinated axons in these slice cultures were comparable to those measured *in vivo* by 3D electron microscopy and previously in PNS myelinated cultures (Kiryu-Seo et al., 2010). These results validate the cerebellar slice system for the examination of mitochondrial behavior in CNS myelinated axons.

The juxtaparanodal-internodal enrichment of axonal mitochondria was unexpected in light of the commonly stated view that mitochondria are enriched in nodal axoplasm (Hollenbeck and Saxton, 2005; Chang and Reynolds, 2006; Chen and Chan, 2006). Based upon our 3D-EM analysis, 39% of nodes in the cerebellum and 68% of nodes in the optic nerve lacked axonal mitochondria. Similar results have been reported previously: 36% (3 out of 8) of cat ventral root nodes and 44% (4 out of 9) of dorsal root nodes lacked mitochondria (Berthold et al., 1993); in rat spinal roots “it was common to find nodes with no mitochondria present and just as common to observe nodes with several mitochondria in the compact axoplasmic region.” (Perkins and Ellisman, 2011); the majority of paranodal/nodal complexes in P60 mouse optic nerve and spinal cord dorsal columns were devoid of mitochondria (Edgar et al., 2008); 30% (3 out of 10) of nodes in the cat spinal cord lacked mitochondria (Fabricius et al., 1993). Collectively, all EM studies show that mitochondria are not obligatory or essential components of the nodal axoplasm. The concept of nodal enrichment of mitochondria was largely based on comparisons involving the ratio of mitochondrial volume to axonal volume. Because axonal diameters are constricted at the node (i.e. nodal axoplasm volume is small), the mV/aV value is high for those fibers that contained nodal mitochondria, and zero when nodal mitochondria are not present. Nodal mV/aV values are thus not normally distributed, and when averaged across multiple axons, their mean values may be very misleading. For example, in the present study, the average nodal mV/aV (10.2%) was 1.3-times the internodal average, whereas the median value (a more appropriate nonparametric measure of centrality) was 0.6-times that of internodal regions (Fig 3j). While mitochondria are not enriched in nodal axoplasm, many nodes do contain mitochondria.

Their presence may depend upon multiple factors, including electrical activity and fiber tract location. As demonstrated by our cerebellum-optic nerve comparisons, the percentage of nodes containing mitochondria can vary in different CNS fiber tracts and may also differ between CNS and PNS axons (Perkins and Ellisman, 2011).

The bulk of mitochondrial volume resides in the longer mitochondrial stationary sites in internodes, suggesting that most ATP within axons is generated there. We have recently reported that axonal Na⁺-K⁺-ATPases are absent from nodal and paranodal axolemmae and are enriched in juxtapanodal and internodal axolemmae (Young et al., 2008). The juxtapanodal enrichment of mitochondrial stationary sites, therefore, is likely to reflect the energy demands of saltatory conduction by myelinated axons. Since mitochondria are the major source of ATP, the internodal enrichment of stationary mitochondria helps facilitate axonal transport which is also energy-dependent. Due to the rapid repolarization of the axolemma, it is unlikely that internodal Na⁺-K⁺-ATPases and mitochondria play a significant role in repolarizing the axolemma during saltatory conduction. In support of this hypothesis, manipulation of axonal electrical activity in myelinated axons had no effect on stationary mitochondrial site size or transport speed of motile mitochondria in internodal segments of myelinated axons. This stands in contrast to demyelination, which increased both the speed of axonal transport and the size of stationary mitochondrial sites in all regions of formerly myelinated axons (Kiryu-Seo et al., 2010). These mitochondrial changes are likely to result from the diffuse distribution of voltage-gated Na⁺ channels on demyelinated axolemmae and the increased energy demands of non-saltatory axonal conduction (Trapp and Stys, 2009).

Internodal stationary sites contained multiple and often large mitochondria, which collectively account for >90% of the mitochondrial volume in axons. Larger axonal mitochondria were not mobile in our imaging studies. In contrast to internodal mitochondria, our results demonstrate that mitochondria in nodal axoplasm are dynamically regulated by voltage-gated Na⁺ channel activity. This is apparent at basal firing rates of Purkinje cell axons in slice cultures as mitochondrial motility is significantly decreased in nodal/paranodal axoplasm compared to juxtapanodal/internodal axoplasm. It remains to be determined whether the decreased mean velocity in nodal/paranodal axoplasm is due to an actual decrease in transport speed and/or an increase in transitory transport stops that cannot be detected by *in vitro* imaging at 6 sec intervals. A similar decrease in mitochondrial motility in nodal axoplasm was reported in amphibian PNS myelinated internodes (Zhang et al., 2010). We confirm and extend this observation by establishing that increased electrical activity not only decreases the speed of motile mitochondria, but also increases the size of mitochondrial stationary sites in node-paranodal axoplasm, but not internodal axoplasm, of myelinated CNS axons. Furthermore, we show that reduced or abolished axonal activity in TTX-treated cultures increases mitochondrial motility and decreases the size of mitochondrial stationary sites in node-paranodal axoplasm. Although these alterations should be confirmed *in vivo*, our observations establish a connection between transport rates of motile mitochondria and stationary mitochondrial site size *in vitro*. Increased electrical activity and Na⁺ channel activation slows mitochondrial transport and increases mitochondrial stationary site size. It is likely, therefore, that Na⁺ channel activity regulates mitochondrial transport and/or mitochondrial fusion/fission.

A possible link between mitochondrial transport and mitochondrial stationary site size at nodes of Ranvier is increased axoplasmic Ca²⁺, which has been implicated in activity-dependent mitochondrial recruitment to synaptic terminals in neurons (Macaskill et al., 2009; Li et al., 2004). A recent study in frog sciatic nerve correlated increased axonal firing, elevated axoplasmic Ca²⁺ and reduced mitochondrial transport in nodal axoplasm of amphibian peripheral nerves (Zhang et al., 2010). We extend these observations by

demonstrating that removal of extracellular Ca^{2+} by EGTA or pharmacologically blocking P/Q- and N-type axonal Ca^{2+} channels mitigate the effects of increased axonal electrical activity in reducing mitochondrial transport and increasing the size of mitochondrial stationary sites in node-paranodal axoplasm. The functions of axoplasmic Ca^{2+} are diverse, as it can directly modify mitochondrial related proteins or indirectly affect mitochondria by activating kinases and phosphatases. Ca^{2+} can enhance mitochondrial energy production by modulating mitochondrial aspartate-glutamate carriers and multiple dehydrogenases, including α -ketoglutarate dehydrogenase (Pardo et al., 2006; Gellerich et al., 2010). Ca^{2+} can reduce mitochondrial transport by binding to the mitochondrial Rho GTPase (Miro) and regulating Miro's interaction with the microtubule motor kinesin-1 (Macaskill et al., 2009; Saotome et al., 2008; Wang and Schwarz, 2009). Ca^{2+} can also shorten mitochondria by augmenting fission (Han et al., 2008). It remains to be determined whether mitochondria that accumulate in the node-paranodal axoplasm in response to increased electrical activity fuse to form larger stationary mitochondria and/or represent accumulation of motile mitochondria.

Axonal degeneration is the major cause of permanent neurological disability in primary diseases of myelin (Trapp and Nave, 2008). Myelination affects axons in many ways including modulation of axonal cytoskeleton. In addition, axonal pathologies that precede axonal degeneration in inherited diseases of myelin are manifested first and most abundantly in paranodal regions (Nave and Trapp, 2008). These paranodal pathologies include decreased phosphorylation of neurofilaments and reduced axonal diameters in MAG-null mice (Yin et al., 1998) and altered axonal transport in CNP- and PLP-null mice (Lappe-Siefke et al., 2003; Edgar et al., 2004). It is likely therefore that mitochondrial transport and distribution are modulated by oligodendrocyte-axon interactions at paranodal loops. In support of this hypothesis, mutations of the septate junction-specific protein Caspr causes impaired paranodal junctions and abnormal distribution and morphology of mitochondria in paranodal axoplasm (Garcia-Fresco et al., 2006; Sun et al., 2009). Our studies of md rat cerebellar axons further support this hypothesis and establish that voltage-gated Na^+ channel clusters are not sufficient to generate node-like behavior of axonal mitochondrial transport or distribution. The studies described in this report therefore set the stage for investigating post-translational modifications of axonal molecules that are modulated by paranodal loops and activity of voltage-gated Na^+ channels.

Acknowledgments

We thank Christopher Nelson for careful editorial assistance and Ansi Chang, Xinghua Yin, Danielle Klein, Erin Petrovic and Nan Avishai for technical assistance. We also thank Dr. Loren L. Looger for information of GCAMP3. This work was supported by National Institutes of Health Grant NS38186 (to BDT) and a National Multiple Sclerosis Society Postdoctoral Fellowship (to NO).

References

- Alix JJ, Dolphin AC, Fern R. Vesicular apparatus, including functional calcium channels, are present in developing rodent optic nerve axons and are required for normal node of Ranvier formation. *J Physiol.* 2008; 586:4069–4089. [PubMed: 18599536]
- Arroyo EJ, Xu T, Grinspan J, Lambert S, Levinson SR, Brophy PJ, Peles E, Scherer SS. Genetic dysmyelination alters the molecular architecture of the nodal region. *J Neurosci.* 2002; 22:1726–1737. [PubMed: 11880502]
- Berthold CH, Fabricius C, Rydmark M, Andersen B. Axoplasmic organelles at nodes of Ranvier. I. Occurrence and distribution in large myelinated spinal root axons of the adult cat. *J Neurocytol.* 1993; 22:925–940. [PubMed: 7507975]
- Bhat MA. Molecular organization of axo-glia junctions. *Curr Opin Neurobiol.* 2003; 13:552–559. [PubMed: 14630217]

- Birgbauer E, Rao TS, Webb M. Lysolecithin induces demyelination in vitro in a cerebellar slice culture system. *J Neurosci Res*. 2004; 78:157–166. [PubMed: 15378614]
- Boison D, Stoffel W. Myelin-deficient rat: a point mutation in exon III (A---C, Thr75---Pro) of the myelin proteolipid protein causes dysmyelination and oligodendrocyte death. *EMBO J*. 1989; 8:3295–3302. [PubMed: 2479544]
- Chang DT, Reynolds IJ. Mitochondrial trafficking and morphology in healthy and injured neurons. *Prog Neurobiol*. 2006; 80:241–268. [PubMed: 17188795]
- Chen H, Chan DC. Critical dependence of neurons on mitochondrial dynamics. *Curr Opin Cell Biol*. 2006; 18:453–459. [PubMed: 16781135]
- Csiza CK, de Lahunta A. Myelin deficiency (md): a neurologic mutant in the Wistar rat. *Am J Pathol*. 1979; 95:215–224. [PubMed: 434110]
- Deerinck TJ, Bushong EA, Lev-Ram V, Shu X, Tsien RY, Ellisman MH. Enhancing Serial Block-Face Scanning Electron Microscopy to Enable High Resolution 3-D Nanohistology of Cells and Tissues. *Microscopy and Microanalysis*. 2010; 16:1138–1139.
- Dentinger MP, Barron KD, Csiza CK. Glial and axonal development in optic nerve of myelin deficient rat mutant. *Brain Res*. 1985; 344:255–266. [PubMed: 4041876]
- Dupont JL, Fourcaudot E, Beekenkamp H, Poulain B, Bossu JL. Synaptic organization of the mouse cerebellar cortex in organotypic slice cultures. *Cerebellum*. 2006; 5:243–256. [PubMed: 17134987]
- Dusart I, Airaksinen MS, Sotelo C. Purkinje cell survival and axonal regeneration are age dependent: an in vitro study. *J Neurosci*. 1997; 17:3710–3726. [PubMed: 9133392]
- Edgar JM, McCulloch MC, Thomson CE, Griffiths IR. Distribution of mitochondria along small-diameter myelinated central nervous system axons. *J Neurosci Res*. 2008; 86:2250–2257. [PubMed: 18381760]
- Edgar JM, McLaughlin M, Yool D, Zhang SC, Fowler JH, Montague P, Barrie JA, McCulloch MC, Duncan ID, Garbern J, Nave KA, Griffiths IR. Oligodendroglial modulation of fast axonal transport in a mouse model of hereditary spastic paraplegia. *J Cell Biol*. 2004; 166:121–131. [PubMed: 15226307]
- Fabricius C, Berthold CH, Rydmark M. Axoplasmic organelles at nodes of Ranvier. II. Occurrence and distribution in large myelinated spinal cord axons of the adult cat. *J Neurocytol*. 1993; 22:941–954. [PubMed: 7507976]
- Fiala JC. Reconstruct: a free editor for serial section microscopy. *J Microsc*. 2005; 218:52–61. [PubMed: 15817063]
- Fiala JC, Harris KM. Extending unbiased stereology of brain ultrastructure to three-dimensional volumes. *J Am Med Inform Assoc*. 2001; 8:1–16. [PubMed: 11141509]
- Gahwiler BH. The effects of GABA, Picrotoxin and bicuculline on the spontaneous bioelectric activity of cultured cerebellar Purkinje cells. *Brain Res*. 1975; 99:85–95. [PubMed: 1237954]
- Garcia-Fresco GP, Sousa AD, Pillai AM, Moy SS, Crawley JN, Tessarollo L, Dupree JL, Bhat MA. Disruption of axo-glial junctions causes cytoskeletal disorganization and degeneration of Purkinje neuron axons. *Proc Natl Acad Sci U S A*. 2006; 103:5137–5142. [PubMed: 16551741]
- Gellerich FN, Gizatullina Z, Trumbeckaite S, Nguyen HP, Pallas T, Arandarcikaite O, Vielhaber S, Seppet E, Strigrow F. The regulation of OXPHOS by extramitochondrial calcium. *Biochim Biophys Acta*. 2010; 1797:1018–1027. [PubMed: 20144582]
- Han XJ, Lu YF, Li SA, Kaitsuka T, Sato Y, Tomizawa K, Nairn AC, Takei K, Matsui H, Matsushita M. CaM kinase I alpha-induced phosphorylation of Drp1 regulates mitochondrial morphology. *J Cell Biol*. 2008; 182:573–585. [PubMed: 18695047]
- Hillman D, Chen S, Aung TT, Cherksey B, Sugimori M, Llinas RR. Localization of P-type calcium channels in the central nervous system. *Proc Natl Acad Sci U S A*. 1991; 88:7076–7080. [PubMed: 1651493]
- Hirai H. Progress in transduction of cerebellar Purkinje cells in vivo using viral vectors. *Cerebellum*. 2008; 7:273–278. [PubMed: 18418690]
- Hollenbeck PJ. The pattern and mechanism of mitochondrial transport in axons. *Front Biosci*. 1996; 1:d91–102. [PubMed: 9159217]

- Hollenbeck PJ, Saxton WM. The axonal transport of mitochondria. *J Cell Sci.* 2005; 118:5411–5419. [PubMed: 16306220]
- Kasri NN, Govek EE, Van AL. Characterization of oligophrenin-1, a RhoGAP lost in patients affected with mental retardation: lentiviral injection in organotypic brain slice cultures. *Methods Enzymol.* 2008; 439:255–266. [PubMed: 18374170]
- Kessler M, Kiliman B, Humes C, Arai AC. Spontaneous activity in Purkinje cells: multielectrode recording from organotypic cerebellar slice cultures. *Brain Res.* 2008; 1218:54–69. [PubMed: 18533133]
- Khaliq ZM, Raman IM. Axonal propagation of simple and complex spikes in cerebellar Purkinje neurons. *J Neurosci.* 2005; 25:454–463. [PubMed: 15647489]
- Kidd GJ, Avishai A, Yin X, Trapp BD. Three-Dimensional Analysis of Optic Nerve Axons Using a Focused Ion Beam-Based Approach. *Microscopy Today.* 2010; 18:18–22.
- Kidd GJ, Heath JW. Double myelination of axons in the sympathetic nervous system of the mouse. II. Mechanisms of formation. *J Neurocytol.* 1988; 17:263–276. [PubMed: 3204414]
- Kiryu-Seo S, Ohno N, Kidd GJ, Komuro H, Trapp BD. Demyelination increases axonal stationary mitochondrial size and the speed of axonal mitochondrial transport. *J Neurosci.* 2010; 30:6658–6666. [PubMed: 20463228]
- Knott G, Marchman H, Wall D, Lich B. Serial section scanning electron microscopy of adult brain tissue using focused ion beam milling. *J Neurosci.* 2008; 28:2959–2964. [PubMed: 18353998]
- Kumada T, Lakshmana MK, Komuro H. Reversal of neuronal migration in a mouse model of fetal alcohol syndrome by controlling second-messenger signalings. *J Neurosci.* 2006; 26:742–756. [PubMed: 16421294]
- Lappe-Siefke C, Goebbels S, Gravel M, Nicksch E, Lee J, Braun PE, Griffiths IR, Nave KA. Disruption of *Cnp1* uncouples oligodendroglial functions in axonal support and myelination. *Nat Genet.* 2003; 33:366–374. [PubMed: 12590258]
- Li Z, Okamoto K, Hayashi Y, Sheng M. The importance of dendritic mitochondria in the morphogenesis and plasticity of spines and synapses. *Cell.* 2004; 119:873–887. [PubMed: 15607982]
- Macaskill AF, Rinholm JE, Twelvetrees AE, rancia-Carcamo IL, Muir J, Fransson A, Aspenstrom P, Attwell D, Kittler JT. Miro1 is a calcium sensor for glutamate receptor-dependent localization of mitochondria at synapses. *Neuron.* 2009; 61:541–555. [PubMed: 19249275]
- Mata M, Fink DJ, Ernst SA, Siegel GJ. Immunocytochemical demonstration of Na⁺,K⁺-ATPase in internodal axolemma of myelinated fibers of rat sciatic and optic nerves. *J Neurochem.* 1991; 57:184–192. [PubMed: 1646859]
- Miller KE, Sheetz MP. Axonal mitochondrial transport and potential are correlated. *J Cell Sci.* 2004; 117:2791–2804. [PubMed: 15150321]
- Misgeld T, Kerschensteiner M, Bareyre FM, Burgess RW, Lichtman JW. Imaging axonal transport of mitochondria in vivo. *Nat Methods.* 2007; 4:559–561. [PubMed: 17558414]
- Morris RL, Hollenbeck PJ. The regulation of bidirectional mitochondrial transport is coordinated with axonal outgrowth. *J Cell Sci.* 1993; 104:917–927. [PubMed: 8314882]
- Morris RL, Hollenbeck PJ. Axonal transport of mitochondria along microtubules and F-actin in living vertebrate neurons. *J Cell Biol.* 1995; 131:1315–1326. [PubMed: 8522592]
- Nave K-A, Trapp BD. Axon-glia signaling and the glial support of axon function. *Annu Rev Neurosci.* 2008; 31:535–561. [PubMed: 18558866]
- Pardo B, Contreras L, Serrano A, Ramos M, Kobayashi K, Iijima M, Saheki T, Satrustegui J. Essential role of aralar in the transduction of small Ca²⁺ signals to neuronal mitochondria. *J Biol Chem.* 2006; 281:1039–1047. [PubMed: 16269409]
- Peles E, Salzer JL. Molecular domains of myelinated axons. *Curr Opin Neurobiol.* 2000; 10:558–565. [PubMed: 11084317]
- Perkins GA, Ellisman MH. Mitochondrial configurations in peripheral nerve suggest differential ATP production. *J Struct Biol.* 2011; 173:117–127. [PubMed: 20600951]
- Poliak S, Peles E. The local differentiation of myelinated axons at nodes of Ranvier. *Nat Rev Neurosci.* 2003; 4:968–980. [PubMed: 14682359]

- Ritchie, JM. Physiology of axons. In: Waxman, SG.; Kocsis, JD.; Stys, PK., editors. *The Axon*. Oxford University Press; New York: 1995. p. 68-96.
- Ross LL, Bornstein MB, Lehrer GM. Electron microscopic observations of rat and mouse cerebellum in tissue culture. *J Cell Biol.* 1962; 14:19–30. [PubMed: 14494194]
- Saotome M, Safiulina D, Szabadkai G, Das S, Fransson A, Aspenstrom P, Rizzuto R, Hajnoczky G. Bidirectional Ca²⁺-dependent control of mitochondrial dynamics by the Miro GTPase. *Proc Natl Acad Sci U S A.* 2008; 105:20728–20733. [PubMed: 19098100]
- Scheffler, IE. *Mitochondria*. John Wiley & Sons; Hoboken, NJ: 2008.
- Stoppini L, Buchs PA, Muller D. A simple method for organotypic cultures of nervous tissue. *J Neurosci Methods.* 1991; 37:173–182. [PubMed: 1715499]
- Sun XY, Takagishi Y, Okabe E, Chishima Y, Kanou Y, Murase S, Mizumura K, Inaba M, Komatsu Y, Hayashi Y, Peles E, Oda S, Murata Y. A novel Caspr mutation causes the shambling mouse phenotype by disrupting axoglial interactions of myelinated nerves. *J Neuropathol Exp Neurol.* 2009; 68:1207–1218. [PubMed: 19816196]
- Tian L, Hires SA, Mao T, Huber D, Chiappe ME, Chalasani SH, Petreanu L, Akerboom J, McKinney SA, Schreiter ER, Bargmann CI, Jayaraman V, Svoboda K, Looger LL. Imaging neural activity in worms, flies and mice with improved GCaMP calcium indicators. *Nat Methods.* 2009; 6:875–881. [PubMed: 19898485]
- Trapp, BD.; Kidd, GJ. Structure of the Myelinated Axon. In: Lazzarini, R., editor. *Myelin Biology and Disorders*. Elsevier; 2004. p. 3-25.
- Trapp BD, Nave K-A. Multiple Sclerosis: An Immune Or Neurodegenerative Disorder? *Annu Rev Neurosci.* 2008; 31:247–269. [PubMed: 18558855]
- Trapp, BD.; Stys, PK. Virtual Hypoxia and Chronic Necrosis of Demyelinated Axons in Multiple Sclerosis. 2009. p. 280-291.
- Twig G, Elorza A, Molina AJ, Mohamed H, Wikstrom JD, Walzer G, Stiles L, Haigh SE, Katz S, Las G, Alroy J, Wu M, Py BF, Yuan J, Deeney JT, Corkey BE, Shirihai OS. Fission and selective fusion govern mitochondrial segregation and elimination by autophagy. *EMBO J.* 2008; 27:433–446. [PubMed: 18200046]
- Utzschneider DA, Archer DR, Kocsis JD, Waxman SG, Duncan ID. Transplantation of glial cells enhances action potential conduction of amyelinated spinal cord axons in the myelin-deficient rat. *Proc Natl Acad Sci U S A.* 1994; 91:53–57. [PubMed: 8278406]
- Wang X, Schwarz TL. The mechanism of Ca²⁺-dependent regulation of kinesin-mediated mitochondrial motility. *Cell.* 2009; 136:163–174. [PubMed: 19135897]
- Waxman, SG. Voltage-gated ion channels in axons: localization, function, and development. In: Waxman, SG.; Kocsis, JD.; Stys, PK., editors. *The Axon*. Oxford University Press; New York: 1995. p. 218-243.
- Waxman SG, Black JA, Duncan ID, Ransom BR. Macromolecular structure of axon membrane and action potential conduction in myelin deficient and myelin deficient heterozygote rat optic nerves. *J Neurocytol.* 1990; 19:11–28. [PubMed: 2351992]
- Yin X, Crawford TO, Griffin JW, Tu P-H, Lee VMY, Li C, Roder J, Trapp BD. Myelin-associated glycoprotein is a myelin signal that modulates the caliber of myelinated axons. *J Neurosci.* 1998; 18:1953–1962. [PubMed: 9482781]
- Young EA, Fowler CD, Kidd GJ, Chang A, Rudick RA, Fisher E, Trapp BD. Imaging correlates of decreased axonal Na⁺/K⁺ ATPase in chronic multiple sclerosis lesions. *Ann Neurol.* 2008; 63:428–435. [PubMed: 18438950]
- Zhang CL, Ho PL, Kintner DB, Sun D, Chiu SY. Activity-dependent regulation of mitochondrial motility by calcium and Na/K-ATPase at nodes of Ranvier of myelinated nerves. *J Neurosci.* 2010; 30:3555–3566. [PubMed: 20219989]

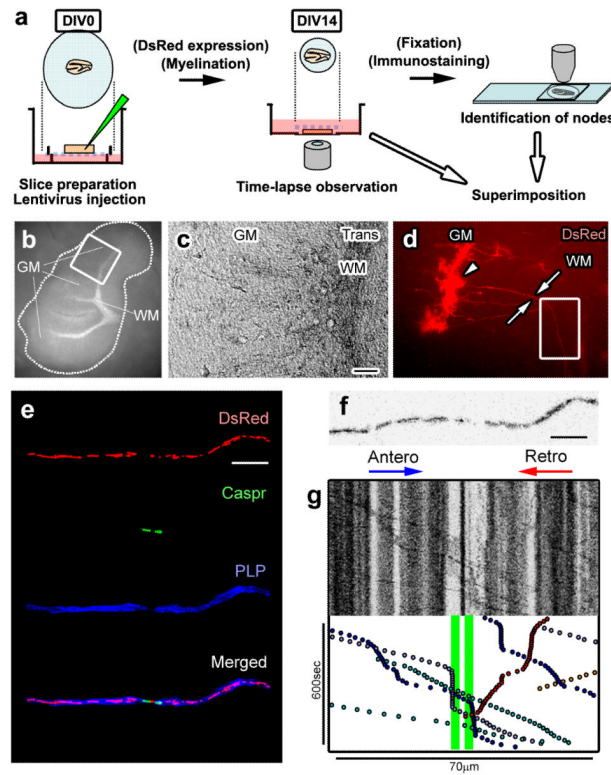
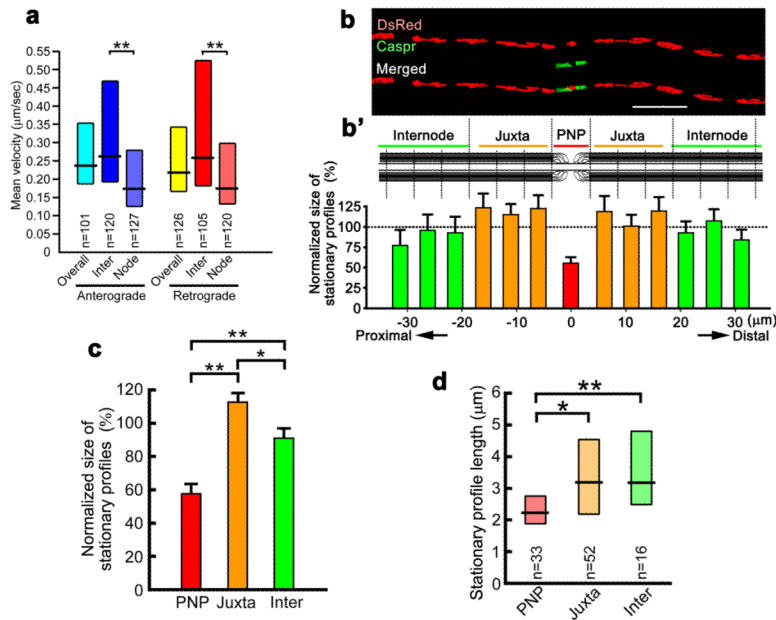


Figure 1.

Time lapse imaging of axonal mitochondria in cerebellar slice cultures. (a) Schematic summary of experimental approach. P10 cerebellar slices are myelinated by 14 days in vitro (14DIV) with microscopically apparent white (WM) and gray matter (GM) (b,c). Purkinje cell soma are transfected with Mito-DsRed (d, arrowhead) and project DsRed-positive myelinated axons (d, arrows) into WM. Time-lapse images of DsRed-labeled axonal mitochondria were obtained (d, box) and superimposed on images of the same axon immunostained for the paranodal protein Caspr and the compact myelin protein PLP (e). A single frame from the time-lapse imaging (f) and a kymographic summary (g) of stationary (vertical black lines) and motile (diagonal lines) mitochondria within different regions of this myelinated axon. Paranodal loops are colored green in the kymograph (g). Scale Bars: 50µm in c, 10µm in e and f.

**Figure 2.**

Mitochondrial transport velocity and mitochondrial stationary site sizes are decreased in nodal axoplasm. Mean anterograde and retrograde mitochondrial transport velocities (a) are significantly decreased in nodal ($\pm 10\mu\text{m}$ from nodes) compared to internodal ($20\sim 40\mu\text{m}$ from nodes) axoplasm. (**: $p < 0.001$). Mitochondrial stationary site size and length were measured at different axonal sites defined by length of and distance from Caspr staining (b, b'). The normalized size (c) and length (d) of mitochondrial stationary sites were significantly smaller in nodal-paranodal axoplasm (PNP) than in juxtapanodal (Juxta) or internodal (Inter) axoplasm and mitochondrial stationary site size was greater in Juxta compared to Inter (c). *: $p < 0.02$. **: $p < 0.008$. n shows number of mitochondria in a and d. $n = 12\sim 15$ axons in b and c. Bars (b', c): mean + s.e.m. Boxes (a, d): median with 1st and 3rd quartiles.

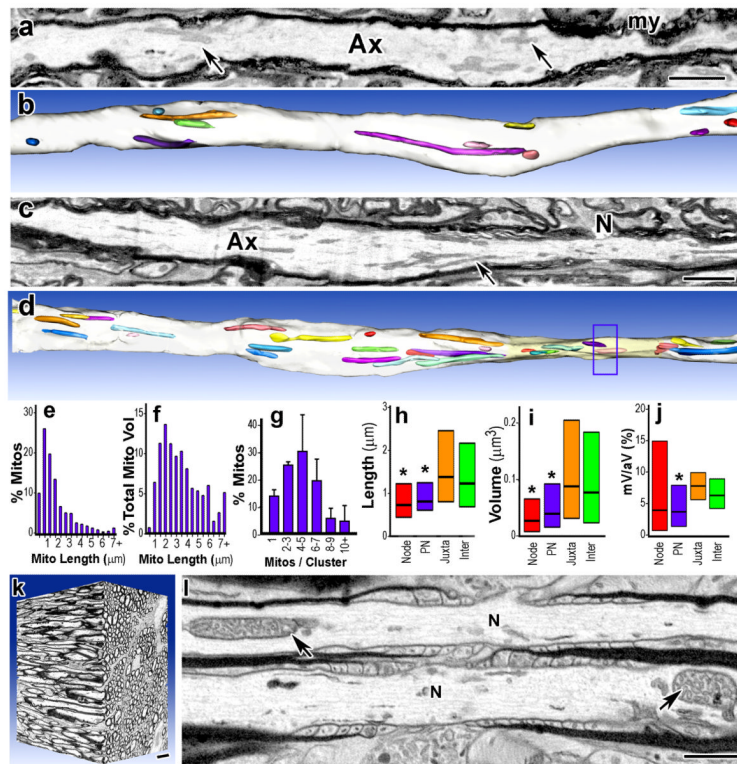
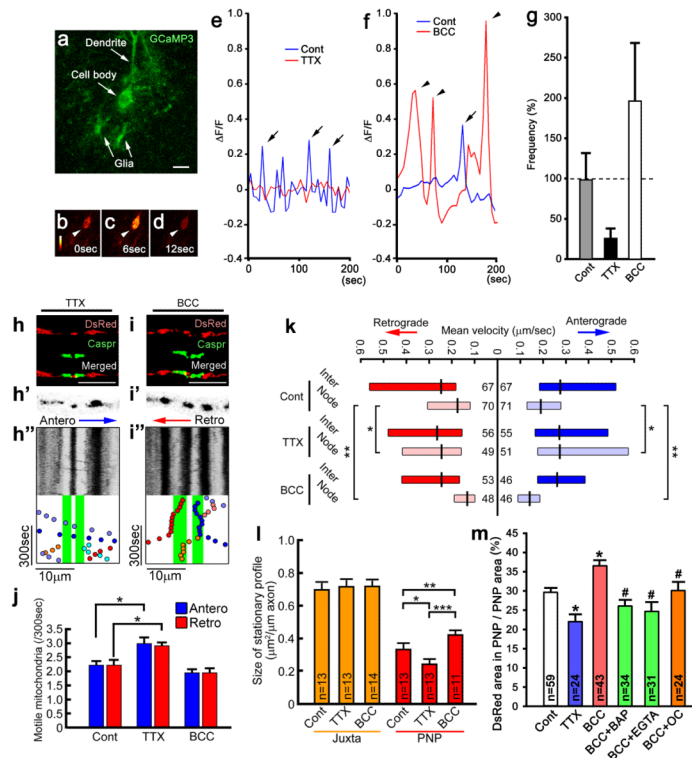


Figure 3.

Mitochondria are not enriched in nodal axoplasm and stationary sites usually contain multiple mitochondria. The three-dimensional distribution of axonal mitochondrial was determined by serial-section electron microscopy of rat cerebellar white matter (a-i) and mouse optic nerve (j-l). Single sections (a,c) and 3D reconstructions of internodal (b) and nodal (d) regions of cerebellar myelinated axons (Ax). A node (c, N) is marked in the 3D reconstruction (d, box). Axonal mitochondrial lengths vary from <1 to >7 μm (e). Axonal mitochondria longer than $4\mu\text{m}$ represent less than 10% of the total axonal mitochondria (e), but greater than 25% of the total axonal mitochondrial volume (f). Internodal mitochondria (a,c; arrows; b,d colored) frequently overlap (g) and 86% are present in clusters of 2 to 11 mitochondria. Mitochondria in nodal and paranodal (PN) axoplasm are shorter (h) and smaller (i) than mitochondria in juxtapanodal (Juxta) and internodal (Inter) axoplasm. The ratio of mitochondrial volume to axonal volume (mV/aV, expressed as %) was highly variable in nodal axoplasm (j), and many nodes (39%) lacked mitochondria. Mitochondria in mouse optic nerve axons (k) were distributed similarly to those in myelinated cerebellar axons. Internodal mitochondria (arrows) were abundant and 67% of nodes (l, N) lacked mitochondria. Bars (g): mean + s.e.m. Boxes (h-j): median with 1st and 3rd quartiles. *: $p < 0.001$ Mann Whitney U tests. Panels a and c are images montaged from serial slices. Scale bars = $1\mu\text{m}$.

**Figure 4.**

Electrical activity and Ca^{2+} increase the size of mitochondrial stationary sites and decrease mitochondrial motility in nodal axoplasm. Mitochondrial transport speed and distribution were investigated following tetrodotoxin (TTX) and bicuculline (BCC) treatment. (a-g) In a Purkinje cell body expressing GCaMP3 (a), increase (b to c, arrowheads) and return (c to d, arrowheads) of fluorescent intensity show a Ca^{2+} transient. The frequency (and amplitude) of Ca^{2+} transients are decreased three-fold by TTX (e) and increased two-fold (f) by BCC (g). Kymographs of nodal axoplasm after TTX (h-h'') and BCC (i-i'') show the number of motile mitochondria is increased by TTX and unchanged by BCC (j). *: $p < 0.01$. $n = 18$ axons for each group. The speed of mitochondrial transport was significantly increased by TTX and significantly decreased by BCC in nodal axoplasm but not in internodal axoplasm (k). *: $p = 0.03$, **: $p < 0.001$. n : number of mitochondria marked on each bar. TTX decreased and BCC increased mitochondrial stationary site size in nodal axoplasm, but not in juxtapanodal axoplasm (l). *: $p = 0.02$, **: $p = 0.01$, ***: $p < 0.001$. TTX also decreased and BCC increased the % nodal axoplasm area occupied by mitochondria (m). Ca^{2+} chelators (EGTA, BAPTA-AM (BAP)) or a Ca^{2+} channel blocker (ω -conotoxin MVIIC (OC)) eliminated the increase of nodal mitochondria size by BCC (m). #: $p < 0.05$ compared to BCC alone. *: $p < 0.001$. n = number of fibers (l) or nodes (m) examined. Bars (g, j, l, m): mean + s.e.m. Boxes (k): median with 1st and 3rd quartiles.

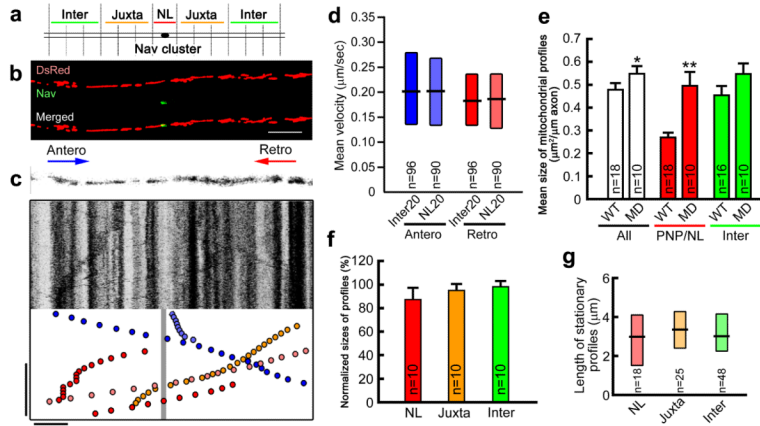


Figure 5. Oligodendrocyte-axon interactions affect distribution and transport of axonal mitochondria. The distribution and transport rates of axonal mitochondria were compared in slice cultures of wild type (WT) and myelin-deficient (MD) rats; MD axons have Na⁺ channel clusters (a-c), but lack paranodal loops and compact myelin. In contrast to WT myelinated axons, mean mitochondrial transport speed was identical in internodal and nodal-like axoplasm of MD fibers (d). The mean size (e), normalized size (f) and length (g) of axonal mitochondria were similar in node-like and internodal axoplasm of MD fibers. Mean mitochondria size in nodal-like and all axoplasm were significantly larger than mean mitochondrial size in WT axons. *: p=0.05, **: p<0.001. n: number of mitochondria (d, g) or axons (e, f). Bars (e, f): mean + s.e.m. Boxes (d, g): median with 1st and 3rd quartiles.