



THE UNIVERSITY *of* EDINBURGH

Edinburgh Research Explorer

Rank signaling links the development of invariant T cell progenitors and Aire(+) medullary epithelium

Citation for published version:

Roberts, NA, White, AJ, Jenkinson, WE, Turchinovich, G, Nakamura, K, Withers, DR, McConnell, FM, Desanti, GE, Benezech, C, Parnell, SM, Cunningham, AF, Paolino, M, Penninger, JM, Simon, AK, Nitta, T, Ohigashi, I, Takahama, Y, Caamano, JH, Hayday, AC, Lane, PJL, Jenkinson, EJ & Anderson, G 2012, 'Rank signaling links the development of invariant T cell progenitors and Aire(+) medullary epithelium' *Immunity*, vol. 36, no. 3, pp. 427-37. DOI: 10.1016/j.immuni.2012.01.016

Digital Object Identifier (DOI):

[10.1016/j.immuni.2012.01.016](https://doi.org/10.1016/j.immuni.2012.01.016)

Link:

[Link to publication record in Edinburgh Research Explorer](#)

Document Version:

Publisher's PDF, also known as Version of record

Published In:

Immunity

Publisher Rights Statement:

Available under Open Access

General rights

Copyright for the publications made accessible via the Edinburgh Research Explorer is retained by the author(s) and / or other copyright owners and it is a condition of accessing these publications that users recognise and abide by the legal requirements associated with these rights.

Take down policy

The University of Edinburgh has made every reasonable effort to ensure that Edinburgh Research Explorer content complies with UK legislation. If you believe that the public display of this file breaches copyright please contact openaccess@ed.ac.uk providing details, and we will remove access to the work immediately and investigate your claim.



Rank Signaling Links the Development of Invariant $\gamma\delta$ T Cell Progenitors and Aire⁺ Medullary Epithelium

Natalie A. Roberts,^{1,7,8} Andrea J. White,^{1,8} William E. Jenkinson,¹ Gleb Turchinovich,^{2,3} Kyoko Nakamura,¹ David R. Withers,¹ Fiona M. McConnell,¹ Guillaume E. Desanti,¹ Cecile Benezech,¹ Sonia M. Parnell,¹ Adam F. Cunningham,¹ Magdalena Paolino,⁴ Josef M. Penninger,⁴ Anna Katharina Simon,⁵ Takeshi Nitta,⁶ Izumi Ohigashi,⁶ Yousuke Takahama,⁶ Jorge H. Caamano,¹ Adrian C. Hayday,^{2,3} Peter J.L. Lane,¹ Eric J. Jenkinson,¹ and Graham Anderson^{1,*}

¹MRC Centre for Immune Regulation, University of Birmingham, Birmingham, B15 2TT, UK

²London Research Institute, Cancer Research UK, London, WC2A 3LY, UK

³Peter Gorer Department of Immunobiology, Kings College at Guy's Hospital, London, SE1 9RT, UK

⁴IMBA, Institute of Biotechnology of the Austrian Academy of Sciences, 1030 Vienna, Austria

⁵Human Immunology Unit, Nuffield Department of Medicine, University of Oxford, Oxford, OX3 9DS, UK

⁶Division of Experimental Immunology, Institute for Genome Research, University of Tokushima, Tokushima 770-8503, Japan

⁷Present address: Department of Molecular, Cellular and Developmental Biology, Yale University, New Haven, CT 06520, USA

⁸These authors contributed equally to this work

*Correspondence: g.anderson@bham.ac.uk

DOI 10.1016/j.immuni.2012.01.016

SUMMARY

The thymic medulla provides a specialized microenvironment for the negative selection of T cells, with the presence of autoimmune regulator (Aire)-expressing medullary thymic epithelial cells (mTECs) during the embryonic-neonatal period being both necessary and sufficient to establish long-lasting tolerance. Here we showed that emergence of the first cohorts of Aire⁺ mTECs at this key developmental stage, prior to $\alpha\beta$ T cell repertoire selection, was jointly directed by Rankl⁺ lymphoid tissue inducer cells and invariant V γ 5⁺ dendritic epidermal T cell (DETC) progenitors that are the first thymocytes to express the products of gene rearrangement. In turn, generation of Aire⁺ mTECs then fostered Skint-1-dependent, but Aire-independent, DETC progenitor maturation and the emergence of an invariant DETC repertoire. Hence, our data attributed a functional importance to the temporal development of V γ 5⁺ $\gamma\delta$ T cells during thymus medulla formation for $\alpha\beta$ T cell tolerance induction and demonstrated a Rank-mediated reciprocal link between DETC and Aire⁺ mTEC maturation.

INTRODUCTION

Shaping of the immature $\alpha\beta$ TCR repertoire within the thymus is necessary to generate a naive T cell pool biased toward the recognition of self MHC molecules (positive selection) but purged (by negative selection) of potentially autoreactive specificities (Boehm, 2011). These $\alpha\beta$ T cell selection events appear to be anatomically compartmentalized in the thymus (Takahama,

2006), in keeping with the finding that intrathymic microenvironments contain distinct, functionally specialized epithelial cell types that regulate thymic selection (Jiang et al., 1995; Surh et al., 1992). Although the epithelial cells in the thymic cortex play a key role in the positive selection and continued maturation of CD4⁺CD8⁺ thymocytes able to interact with self-peptide-MHC complexes (Gommeaux et al., 2009; Honey et al., 2002; Murata et al., 2007; Nitta et al., 2010; Ripen et al., 2011), epithelial cells and dendritic cells (DCs) in the thymic medulla play a key role in negative selection, by which thymocytes bearing strongly self-reactive $\alpha\beta$ TCRs are eliminated from the developing $\alpha\beta$ T cell repertoire (Kyewski and Klein, 2006). In particular, medullary thymic epithelial cells (mTECs), including those expressing the *Aire* gene (Björnses et al., 1998; Heino et al., 1999, 2000), influence negative selection in several ways (Anderson et al., 2002; Derbinski et al., 2005; Liston et al., 2003), including expression of a wide array of tissue-restricted antigens for direct and indirect antigen presentation to newly selected thymocytes (Gallegos and Bevan, 2004), and the regulation of intrathymic DC positioning via Aire-dependent XCL1 expression (Lei et al., 2011).

Normal mTEC development depends on NF- κ B signaling, as shown by medullary abnormalities and tolerance breakdown in mice deficient in RelB (Burkly et al., 1995; Naspetti et al., 1997), Traf6 (Akiyama et al., 2005), and Nik (Kajijura et al., 2004). Moreover, mTEC maturation requires hematopoietic cell cross-talk (Shores et al., 1991), which involves signaling through various mTEC-expressed TNF receptor superfamily (TNFRSF) members (Boehm et al., 2003; Zhu and Fu, 2008). Regarding the Aire⁺ mTEC subset, which first emerges around embryonic day (E) 16 of gestation (Gäbler et al., 2007; White et al., 2008; Zuklys et al., 2000), Rank (TNFRSF11a, CD265, TRANCER) plays a key role (Rossi et al., 2007), whereas in the steady-state adult thymus, synergy between Rank and CD40 regulates Aire⁺ mTEC development (Akiyama et al., 2008; Hikosaka et al., 2008; Irla et al., 2008). Importantly, by controlling and limiting the temporal deletion of Aire⁺ mTECs to either neonatal or adult thymus,

a recent study showed that Aire⁺ mTECs in the embryonic and neonatal period are both essential and sufficient to establish long-term T cell tolerance (Guerau-de-Arellano et al., 2009). Thus, the development of the first cohorts of Aire⁺ mTECs from Rank-expressing mTEC progenitors is a key step in the avoidance of autoimmunity. Whereas Rank ligand (Rankl)-expressing, positively selected thymocytes play a role in the development of Aire⁺ mTECs in the adult thymus (Hikosaka et al., 2008), we showed that Rankl⁺ lymphoid tissue inducer (LTi) cells, master regulators of lymphoid tissue organogenesis (Eberl et al., 2004; Finke et al., 2002; Mebius et al., 1997; Sun et al., 2000), are a key determinant of Rank-dependent thymus medulla development in the embryo (Rossi et al., 2007). Taken together with the key role of the first Aire⁺ mTEC cohorts in tolerance induction (Guerau-de-Arellano et al., 2009), these findings support a preemptive role for innate LTi cells, in which Aire⁺ mTECs develop independently of and prior to $\alpha\beta$ T cell-positive selection, ensuring that they are in place to induce tolerance in the nascent $\alpha\beta$ T cell repertoire. However, although Rankl⁺ LTi induce mTEC differentiation, the presence of Aire⁺ mTECs in the developing embryonic thymus of LTi-deficient *Rorc*^{-/-} mice at a stage prior to $\alpha\beta$ T cell selection (White et al., 2008) suggests that additional embryonic cell types play a distinct role in establishing the medullary microenvironments that ensure T cell tolerance induction.

Prior to $\alpha\beta$ T cells, the embryonic thymus generates T cells that express the $\gamma\delta$ TCR (Havran and Allison, 1988, 1990; Pennington et al., 2003). Indeed, the first appearance of Aire⁺ mTECs (White et al., 2008; Zuklys et al., 2000) coincides with that of progenitors of V γ 5⁺ dendritic epidermal T cells (DETCs), a subset of invariant intraepithelial lymphocytes (IELs) whose development is uniquely linked to the embryonic thymus (Asarnow et al., 1988; Ikuta et al., 1990; Mallick-Wood et al., 1998). Although the invariant nature of the V γ 5V δ 1TCR repertoire expressed by DETC progenitors distinguishes them from diverse $\alpha\beta$ T cell precursors, several studies demonstrate a role for selection events during intrathymic DETC development (Passoni et al., 1997; Xiong et al., 2004). In particular, Skint-1, an immunoglobulin superfamily member expressed by TECs, is essential for the selection and generation of the monoclonal DETC compartment (Barbee et al., 2011; Boyden et al., 2008; Lewis et al., 2006). Furthermore, DETC development is followed within a few days by the emergence of $\gamma\delta$ T cells with diverse TCRs that, like $\alpha\beta$ TCRs, may need selective focusing to avoid autoimmune pathology. Thus, intrathymic epithelial microenvironments may play distinct and critical roles in the generation and selection of both diverse and invariant $\gamma\delta$ T cell subsets.

Given the importance of tolerance induction in the neonatal period, we sought to examine possible links between the initial formation of intrathymic microenvironments that impose tolerance during this early developmental window in the immune system and the early appearance of $\gamma\delta$ T cells. We show that the scheduled early development of invariant V γ 5⁺ DETC progenitors makes a distinct contribution to the development of Aire⁺ mTEC maturation. Moreover, we show a link between Rank-mediated Aire⁺ mTEC development and the functional maturation of V γ 5⁺ DETC progenitors via their expression of *Skint1*. This link between V γ 5⁺ DETC thymocyte progenitor maturation and Rank-mediated mTEC development was further underlined by a block

in the intrathymic development of V γ 5⁺ progenitors in the thymus of Rank-deficient (*Tnfrsf11a*^{-/-}) mice at the $\gamma\delta$ TCR^{lo}CD45RB^{lo} stage, which further manifested as diminished numbers of mature epidermal-resident DETCs and the loss of an invariant V γ 5⁺ DETC repertoire, in *Tnfrsf11a*^{-/-} neonatal epidermis. However, despite these links between Skint-1 and Aire⁺ mTECs, *Skint1* expression was found to be Aire independent, and intrathymic V γ 5⁺ thymocyte development and the emergence of invariant V γ 5⁺ DETCs proceeded normally in *Aire*^{-/-} mice. Collectively, our data have identified the key cellular components that regulate the emergence of Aire⁺ mTECs at initial stages of thymus development and defined a critical role for Rank-Rankl-mediated interactions between fetal $\gamma\delta$ T cell progenitors and mTECs that reciprocally regulate their maturation.

RESULTS

V γ 5⁺ DETC Progenitors Associate with Fetal mTECs

We previously showed that generation of the first cohorts of Aire⁺ mTECs in the embryonic thymus involves signals from Rankl⁺ LTi cells (Rossi et al., 2007), a population originally identified as a key player in the development of stromal microenvironments within secondary lymphoid tissues such as lymph node (Mebius, 2003). However, when we analyzed thymus medulla formation in *Rorc*^{-/-} embryonic mice lacking LTi, we found Aire⁺ mTECs still present, albeit at reduced numbers (White et al., 2008). This nonessential role for LTi cannot be explained by Rankl provision by positively selected $\alpha\beta$ TCR⁺ thymocytes, because Aire⁺ mTECs are present in *Rorc*^{-/-} embryonic mice prior to $\alpha\beta$ T cell selection (White et al., 2008). To investigate the possibility that previously unidentified cell types influence initial thymus medulla formation in the developing embryonic thymus, we screened the cellular makeup of medullary areas in E17 thymus tissue sections. Of the cell types analyzed, and consistent with an earlier report (Farr et al., 1990), a pan- $\gamma\delta$ TCR antibody defined a striking concentration of $\gamma\delta$ TCR⁺ thymocytes within developing embryonic EpCAM1⁺ medullary areas (not shown). Moreover, by using a V γ 5TCR-specific antibody, we found that essentially all of the medullary-resident $\gamma\delta$ TCR⁺ thymocytes at this stage expressed the V γ 5TCR (Figures 1A and 1B), representing DETC progenitors. Further analysis showed that some medullary-resident V γ 5⁺ T cells expressed high levels of CD45RB (Figure 1C), a maturational marker of intrathymic DETC progenitors (Lewis et al., 2006), suggestive of a link between thymus medulla development and DETC progenitor maturation. Confocal analysis of embryonic thymus sections stained to reveal the localization and frequency of V γ 5⁺ thymocytes and ROR γ ⁺CD4⁺CD3⁻IL-7R α ⁺ LTi showed an abundance of V γ 5⁺ thymocytes relative to LTi cells, with quantitative analysis indicating an approximate 100:1 ratio for V γ 5⁺ thymocytes:LTi within medullary areas (Figure 1D). Importantly, dual staining with antibodies to Aire and V γ 5TCR revealed individual medullary areas containing both Aire⁺ mTECs and V γ 5⁺ thymocytes (Figure 1E), whereas staining with Aire and pan- $\gamma\delta$ TCR antibodies together with IL-7R α and ROR γ antibodies to reveal IL-7R α ⁺ROR γ ⁺ LTi demonstrated the presence of both $\gamma\delta$ TCR⁺ thymocytes and LTi within individual Aire-expressing medullary areas (Figure 1F). Analysis of the anatomical distribution of LTi and V γ 5

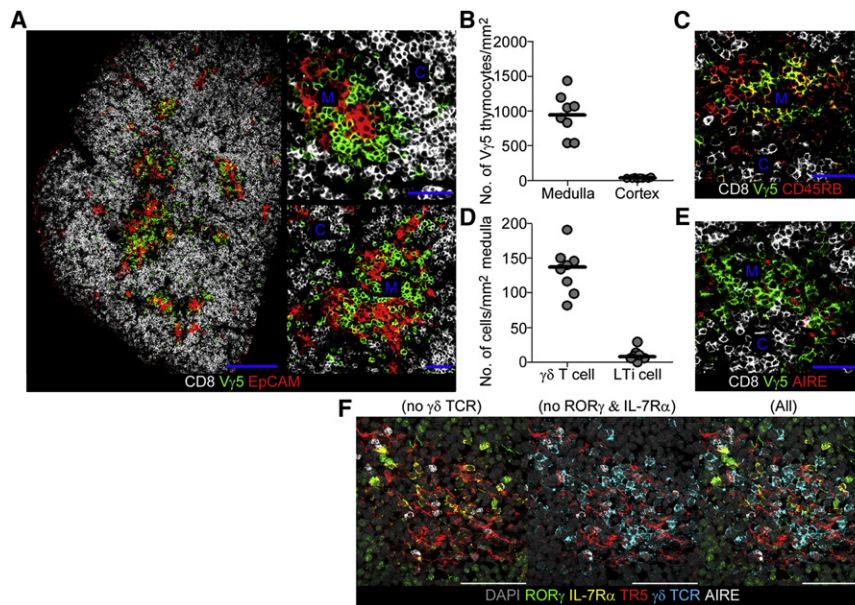


Figure 1. In Fetal Thymus, V γ 5⁺ Thymocytes Associate with Developing Aire-Expressing Medullary Environments

(A) E17 thymus lobes from B6 mouse embryos were stained with antibodies to CD8 (white), V γ 5TCR (green), and EpCAM1 (red). CD8 expression denotes the cortical areas containing CD4⁺CD8⁺ thymocytes.

(B) Quantitation of the distribution of V γ 5⁺ thymocytes in cortical and medullary areas of E17 thymic sections. Each point represents an individual thymus lobe, and horizontal lines on the graph represent the mean.

(C) An image of a frozen section of E17 thymus stained for CD8 (white), CD45RB (red), and V γ 5TCR (green).

(D) Quantitation of the frequency of ROR γ ⁺IL-7R α ⁺ LTi and V γ 5TCR⁺ thymocytes in E17 thymic medullary regions, with each point representing an individual thymus lobe, and horizontal lines on the graph representing the mean.

(E) Image of an E17 frozen thymus section for CD8 (white), Aire (red), and V γ 5TCR (green).

(F) Confocal image of a medullary area within an E17 thymus section stained with antibodies to ROR γ (green), IL-7R α (yellow), TR5 (red), γ δ TCR (blue), and Aire (white). Nuclei are stained with DAPI (gray). For clarity, a series of images with various marker combinations is shown.

thymocytes in relation to Aire⁺ mTECs in thymus tissue sections failed to reveal a defined pattern to the distribution of these cells within multiple medullary areas (not shown). However, although there may be no difference in the topological positioning of these cells in the thymic medulla, the combined presence of V γ 5⁺ thymocytes and LTi cells within individual medullary areas suggests that they act collectively to influence mTEC development. Taken together, these results indicate that in the fetal thymus, in addition to the presence of LTi cells, there is an anatomical association between fetal-specific V γ 5 thymocytes and thymic medullary epithelial cells.

V γ 5⁺ Thymocytes Express Rankl and Drive Aire⁺ mTEC Development

To investigate the possibility that V γ 5⁺ DETC thymocyte progenitors influence the formation of embryonic mTEC microenvironments, we first made reaggregate thymus organ cultures (RTOCs) by using 2 dGuo fetal thymus lobes, known to contain the Rank⁺ progenitors of Aire⁺ mTECs (Rossi et al., 2007), into which either purified V γ 5⁺ thymocytes or LTi were added. After 5 days, RTOCs were disaggregated and analyzed by flow cytometry for the appearance of mature EpCAM1⁺Ly51⁻Aire⁺ mTECs. Consistent with our previous observations that mTEC progenitor development depends upon hematopoietic cell crosstalk (Rossi et al., 2007), Aire⁺ mTECs were absent in RTOCs initiated without added hematopoietic cells (Figure 2A, left) but were found to be present after the addition of LTi (Figure 2A, middle). Strikingly, analysis of RTOCs initiated with V γ 5⁺ thymocytes (Figure 2A, right) also induced the emergence of a defined cohort of EpCAM1⁺Ly51⁻Aire⁺ mature mTECs, providing direct evidence that DETC progenitors can influence the formation of embryonic medullary thymic microenvironments. Despite an approximate 100-fold difference in Rankl expression in LTi cells and V γ 5⁺

thymocytes (Figure 2B), both cell types induced a similar proportion of Aire⁺ mTECs in RTOC experiments (Figure 2A, middle and right). Importantly, RTOC experiments in which Rank-Rankl interactions were inhibited by addition of the soluble decoy receptor OPG completely abrogated Aire⁺ mTEC development induced by both V γ 5⁺ thymocytes and LTi cells (Figure 2A). Collectively, these experiments demonstrate the potency of Rank signaling in mTEC development and directly show that Rankl expression by V γ 5⁺ thymocytes and LTi cells underpins the ability of these cells to induce Aire⁺ mTEC development.

Given that previous experiments highlighted the particular importance of Rank-Rankl signaling in embryonic Aire⁺ mTEC maturation, we next analyzed Rankl mRNA expression in a variety of thymic populations by qPCR. In contrast to CD4⁺CD8⁺ thymocytes that are known to lack Rankl expression (Hikosaka et al., 2008), purified V γ 5⁺ thymocytes and LTi cells were both found to express readily detectable levels of Rankl (Figure 2B). Although Rankl expression by V γ 5⁺ thymocytes was found to be lower than that of LTi, it was comparable to that of positively selected CD4⁺ α β TCR^{hi} thymocytes (Figure 2B), which is sufficient to drive Aire⁺ mTEC development in the adult (Hikosaka et al., 2008). Thus, Rankl expression by V γ 5TCR⁺ thymocytes correlates well with our finding that they can induce Rank-dependent Aire⁺ mTEC maturation. Interestingly, qPCR analysis of separated CD45RB^{lo} and CD45RB^{hi} subsets of V γ 5⁺ thymocytes showed that both expressed Rankl, with a slightly higher levels of expression being detected in CD45RB^{lo} cells (Figure 2C). This finding is of significance because it suggests that unlike α β T cells, which rely on positive selection to reach the Rankl⁺ stage and influence mTECs (Hikosaka et al., 2008), V γ 5 T cells are equipped with Rankl at an immature stage, indicating that Skint-1-mediated differentiation does not determine the ability of γ δ T cells to influence the thymic medulla. Combined

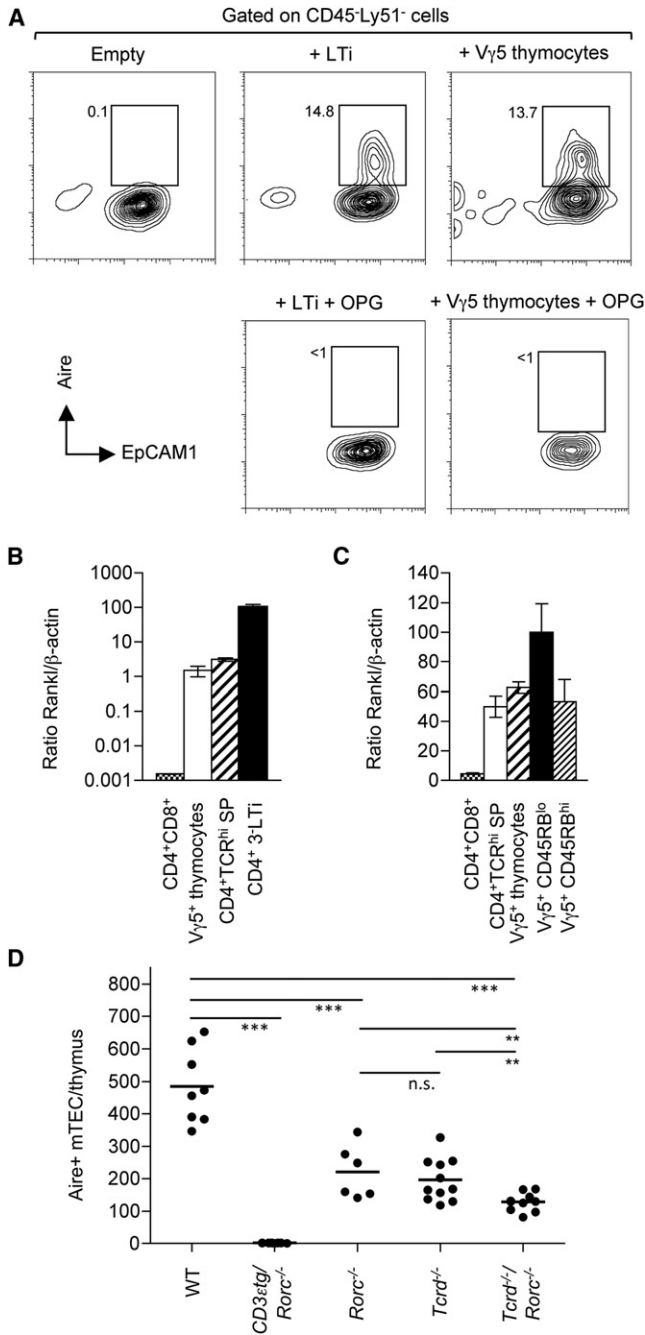


Figure 2. V γ 5⁺ Thymocytes Express Rankl and Induce Aire⁺ mTEC Development

(A) Reaggregate thymus organ cultures were prepared from either 2 dGuo-treated thymic stromal cells alone (left), or with added LTi (middle) or added V γ 5⁺ fetal thymocytes (right). In some cultures, recombinant OPG was added at a final concentration of 10 μ g/ml (bottom). After 5 days, cultures were disaggregated, and FACS analysis is shown for EpCAM1 and nuclear Aire, gated on CD45⁻Ly51⁻ cells. Numbers indicate percentages of cells.

(B and C) Quantitative PCR analysis of *Rankl* is shown for thymocyte populations and total V γ 5⁺ thymocytes (B) and *Rankl* expression in thymocytes and CD45RB subsets of V γ 5⁺ thymocytes (C). Levels of mRNA were normalized to *ACTB* (β -actin).

(D) Cell numbers of Aire⁺EpCAM1⁺Ly51⁻ mTECs within freshly disaggregated E17 thymus lobes of the indicated mouse strains. Each point represents

with functional data on the importance of Rankl in Aire⁺ mTEC development, this suggests that both immature and mature V γ 5⁺ thymocytes have the potential to influence mTEC development. Collectively, these findings demonstrate that intrathymic V γ 5⁺ DETC progenitors express *Rankl*, are accumulated in developing medullary areas of the fetal thymus, and can induce the maturation of mTEC progenitors into mature Aire⁺ mTECs.

We next analyzed the frequency of Aire⁺ mTECs within the fetal thymus at E17 of gestation in WT mice and in mice individually deficient in either LTi (*Rorc*^{-/-}) or γ δ T cells (*Tcrd*^{-/-}) or both (*Rorc*^{-/-} \times *Tcrd*^{-/-}). As expected, mice lacking the capacity to provide hematopoietic crosstalk signals via combined blockade of T cell development/LTi development (CD3 ϵ tg26/*Rorc*^{-/-} mice) displayed a complete absence of Aire⁺ mTECs (Figure 2D). By contrast, both *Tcrd*^{-/-} and *Rorc*^{-/-} single mutant mice showed a partial, but statistically significant, defect in the generation of Aire⁺ mTECs as compared to WT controls (Figure 2D). Interestingly, analysis of *Rorc*^{-/-} \times *Tcrd*^{-/-} double-deficient mice revealed a further reduction in the frequency of Aire⁺ mTECs compared to *Tcrd*^{-/-} and *Rorc*^{-/-} single mutants. Thus, these findings indicate that although LTi and γ δ T cells are required in order to generate Aire⁺ mTECs at a normal frequency, the presence of small numbers of Aire⁺ mTECs in their combined absence, which contrasts to the total absence of Aire⁺ mTECs in CD3 ϵ tg26/*Rorc*^{-/-} mice, suggests that additional hematopoietic cell types can also be involved.

Skint-1 Is Expressed by Mature mTECs and Is Induced by Rank Signaling

Intrathymic development of invariant V γ 5⁺ thymocyte progenitors and the generation of an invariant V γ 5⁺ DETC population in the epidermis depends upon thymic stromal cell expression of Skint-1, an Ig superfamily member expressed by mTECs (Lewis et al., 2006). To investigate the possible link between this thymic stromal cell expression of Skint-1, the medullary accumulation of V γ 5⁺ thymocytes, and Aire⁺ mTEC development, we further analyzed *Skint1* expression in embryonic cTEC and mTEC subsets (Shakib et al., 2009), including immature CD80⁻ and mature CD80⁺ mTEC populations shown previously to have a direct precursor-product relationship, with the latter containing Aire⁺ cells (Gäbler et al., 2007; Gray et al., 2007; Rossi et al., 2007). As expected, *Aire* expression was limited to mature CD80⁺ mTECs (Figure 3A), but of note this restricted pattern mirrored that of *Skint1*, which was undetectable in immature and mature stages of the cTEC lineage and in immature CD80⁻ mTECs (Figure 3A).

Given our report of a key role for Rank in the development of fetal mTECs, we analyzed its importance in the regulation of *Skint1*. When we stimulated the development of Aire⁺ mTECs in dGuo-treated FTOCs with agonistic Rank antibodies, the induction of *Aire* expression (Figure 3B) was accompanied by the induction of *Skint1* expression, with unstimulated dGuo-treated FTOCs showing an absence of *Skint1* expression (Figure 3B). In addition, in comparison to levels seen in WT littermate

a single thymus lobe, with horizontal lines representing the mean. Asterisks indicate statistically significant differences; ***p < 0.001, **p < 0.006, n.s., not significant.

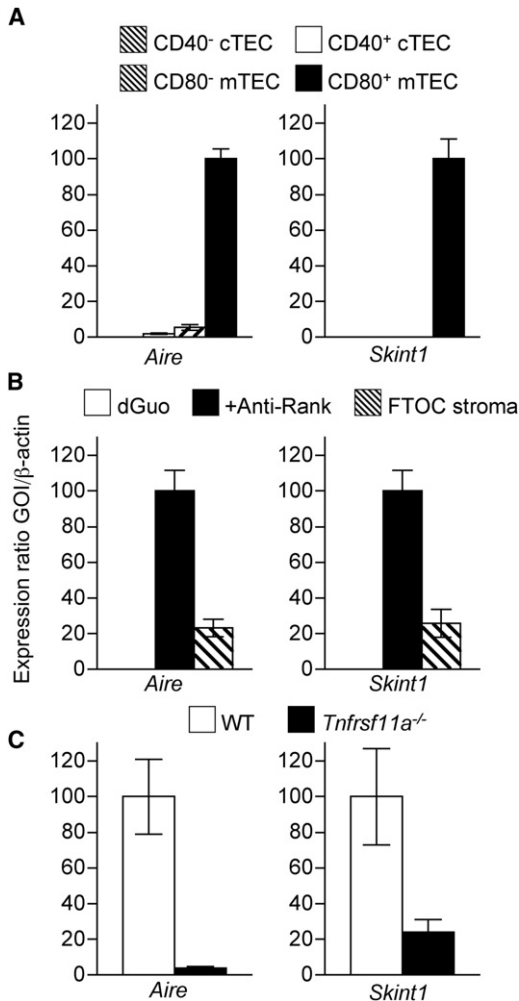


Figure 3. *Skint1* Expression Maps to CD80⁺ mTECs and Is Regulated by Rank Signaling

(A) Quantitative PCR analysis of *Aire* and *Skint1* in freshly isolated TEC subsets.

(B) 2-dGuo-treated FTOC cultured in the presence (black bars) or absence (white bars) of Rank antibody were analyzed by qPCR for expression of *Aire* and *Skint1*. Levels of expression in total CD45⁻ FTOC stroma (hatched bars) are shown for comparison.

(C) qPCR analysis of the indicated genes in CD45⁻ cells isolated from WT (white bars) and *Tnfrsf11a*^{-/-} (black bars) E15 thymus lobes, established in FTOC for 7 days. In all cases, levels of mRNA were normalized to β -actin.

controls, analysis of CD45⁻ thymic stromal cell populations from fetal *Tnfrsf11a*^{-/-} mice showed a dramatic reduction in expression of both *Aire* and *Skint1* (Figure 3C). Thus, our findings that *Skint1* expression in the mTEC lineage is restricted to more mature CD80⁺ mTECs and is linked to Rank-mediated signaling in mTECs further highlight a potential reciprocal link in the development of *Aire*⁺ mTECs and V γ 5⁺ T cells.

Rank Regulates V γ 5⁺ Thymocyte Development and the Emergence of an Invariant DETC Repertoire

To study the potential link between *Aire*⁺ mTECs and V γ 5⁺ DETC progenitors, we initially studied the embryonic thymus of *Relb*^{-/-}

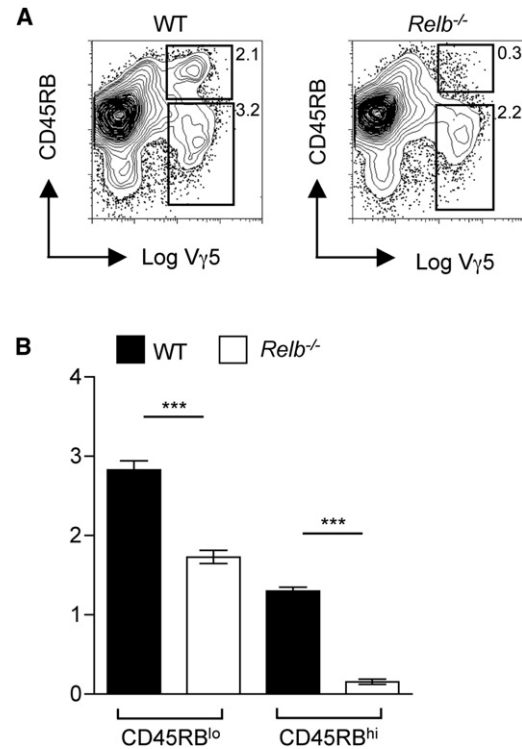


Figure 4. Defective Intrathymic Maturation of V γ 5⁺ DETC Progenitors in *Relb*-Deficient Mice

(A) Analysis of V γ 5TCR⁺ thymocyte maturation in WT and *Relb*-deficient E15 thymus lobes placed in FTOCs for 5 days. Numbers indicate the percentages of cell populations.

(B) Percentages of immature V γ 5⁺CD45RB^{lo} and mature V γ 5⁺CD45RB^{hi} thymocytes in WT (black bars) and *Relb*-deficient (white bars) FTOCs. A minimum of six mice were analyzed, and an unpaired Student's two-tailed t test was performed with asterisks signifying a significant difference, where $p < 0.0001$.

mice, a transcription factor in the alternative NF- κ B signaling pathway that is downstream of several TNFSF-R family members including CD40 and Rank, known regulators of mTEC maturation. Consistent with this, and as previously reported, *Aire*⁺ mTECs were absent from the thymus of E17 *Relb*^{-/-} embryos (data not shown). When we analyzed V γ 5⁺ thymocyte development, with upregulation of CD45RB as a marker of maturation (Lewis et al., 2006), we found a statistically significant decrease in both CD45RB^{lo} and CD45RB^{hi} subsets in *Relb*^{-/-} embryonic thymuses compared to WT controls (Figures 4A and 4B). Despite a reduction in both CD45RB subsets, a dramatic skewing in the ratio (approximately 6:1) of WT:*Relb*^{-/-} CD45RB^{hi} cells was observed, compared to a ratio of 1.6:1 for WT:*Relb* CD45RB^{lo} cells, suggesting that although RelB may play a subtle role in the initial emergence of V γ 5CD45RB^{lo} cells, it appears critically important in the maturation to the V γ 5⁺CD45RB^{hi} stage.

Given that RelB is downstream of multiple, TNFSF-R family members, we next analyzed by flow cytometry thymocyte suspensions obtained from neonatal *Tnfrsf11a*^{-/-} mice. Again, we found a dramatic reduction in the frequency of cells expressing high levels of both the V γ 5TCR and CD45RB (Figures 5A–5C),

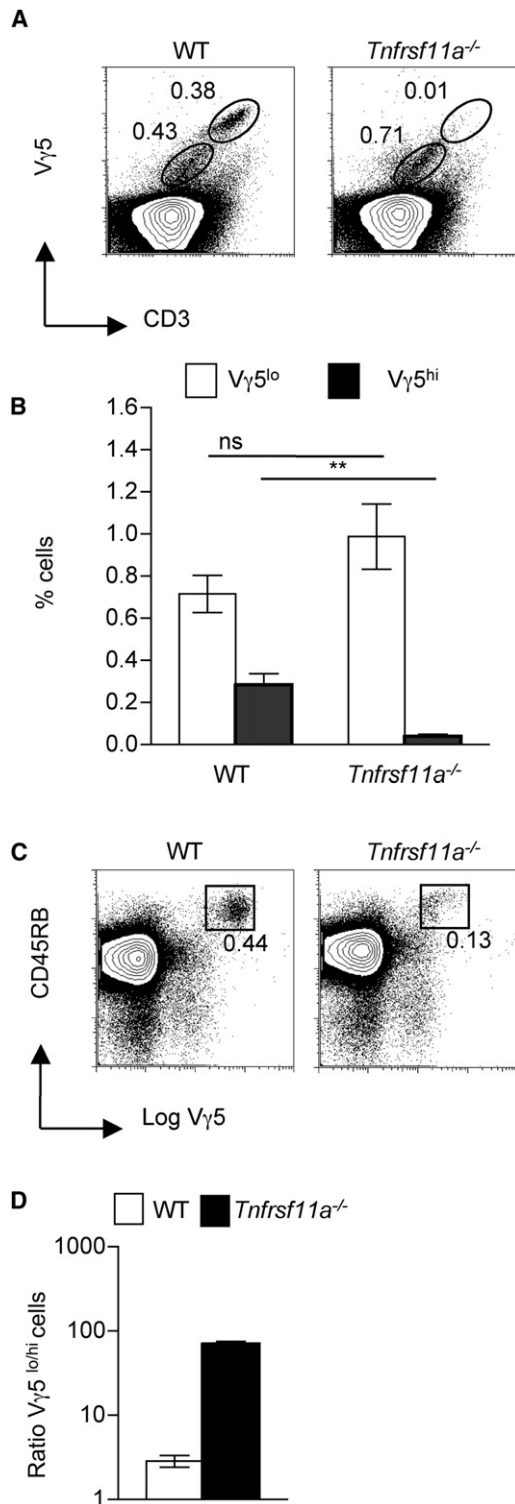


Figure 5. Rank Regulates Intrathymic Maturation of V γ 5⁺ DETC Progenitors

(A) Neonatal thymocyte suspensions from WT and *Tnfrsf11a*^{-/-} mice were stained with antibodies to the V γ 5TCR and CD3. Circles indicate immature CD3^{lo}V γ 5^{lo} and mature CD3^{hi}V γ 5^{hi} subsets.

(B) Proportions of V γ 5^{lo} (white bars) and V γ 5^{hi} (black bars) thymocytes in WT and *Tnfrsf11a*^{-/-} newborn mice is shown. Averages and standard errors of

which resulted in a skewing in the mature:immature DETC ratio in *Tnfrsf11a*^{-/-} mice (1:100) as compared to WT littermate controls (1:3) (Figure 5D). In addition, analysis of neonatal epidermal preparations showed that *Tnfrsf11a*^{-/-} mice have a dramatic reduction in the frequency of total epidermal CD3⁺ T cells (Figure 6A), as well as a disproportionate reduction in those expressing the V γ 5TCR (Figures 6B and 6C). Further flow cytometric analysis with an antibody that detects the V γ 5V δ 1 $\gamma\delta$ TCR (clone 17D1) showed that the small numbers of V γ 5⁺ DETCs present in *Tnfrsf11a*^{-/-} mice epidermis were also V δ 1⁺, suggesting that residual levels of *Skint1* detected in the absence of Rank may still support the generation of small numbers of invariant DETCs. Nevertheless, the combined data on *Tnfrsf11a*^{-/-} mice, demonstrating a defect in intrathymic V γ 5⁺ thymocyte maturation, coupled to diminished numbers of V γ 5⁺ DETCs, demonstrate that efficient maturation of an invariant V γ 5TCR⁺ DETC repertoire depends upon expression of the TNFSF-Receptor Rank, just as it depends on *Skint-1* (Barbee et al., 2011; Lewis et al., 2006).

Skint-1-Mediated V γ 5⁺ DETC Development Proceeds Normally in *Aire*-Deficient Mice

To investigate whether the importance of Rank-dependent *Aire*⁺ mTEC development for *Skint-1*-mediated DETC maturation is directly dependent upon *Aire* itself, we analyzed *Skint1* expression and the emergence of epidermal V γ 5⁺ DETCs in neonatal *Aire*-deficient mice. We found that in contrast to the known *Aire* dependency of genes such as *Spt1* (salivary protein 1) (Figure 7A), *Skint1* expression was unaltered in *Aire*^{-/-} neonatal thymus (Figure 7A). In line with this lack of requirement for *Aire* in the expression of *Skint1*, comparison of the neonatal epidermis of *Aire*^{-/-} and WT mice showed no changes in the frequency of epidermal CD3⁺ cells (Figure 7B), including those expressing V γ 5⁺ (Figures 7C and 7D). Thus, despite the association between the maturation of *Aire*⁺ mTECs and invariant V γ 5TCR⁺ DETC maturation, *Aire* deficiency does not impair the emergence of an invariant *Skint-1*-dependent DETC pool.

DISCUSSION

Intrathymic medullary microenvironments are known to play an important role in establishing tolerance in newly generated $\alpha\beta$ T cells (Anderson et al., 2007; Takahama, 2006). In particular, medullary epithelial cells that express the *Aire* gene have been shown to participate in T cell tolerance induction in several ways (Mathis and Benoist, 2009). For example *Aire*⁺ mTECs have been directly linked to the negative selection of single-positive thymocytes that bear $\alpha\beta$ TCRs recognizing tissue-restricted antigens (Liston et al., 2003), as well as the development of FoxP3⁺ natural regulatory T cells (Aschenbrenner et al., 2007), and most recently in the intrathymic positioning of XCR1⁺

populations are shown, and asterisks indicate a statistically significant difference where $p < 0.01$. n.s. is not significant.

(C) FACS analysis of thymocytes from neonatal WT and *Tnfrsf11a*^{-/-} mice for expression of CD45RB and V γ 5. Boxes indicate the percentages of V γ 5^{hi}CD45RB^{hi} cells.

(D) Ratio of V γ 5^{lo}:V γ 5^{hi} cells in WT (white bars) and *Tnfrsf11a*^{-/-} (black bars) neonatal thymus.

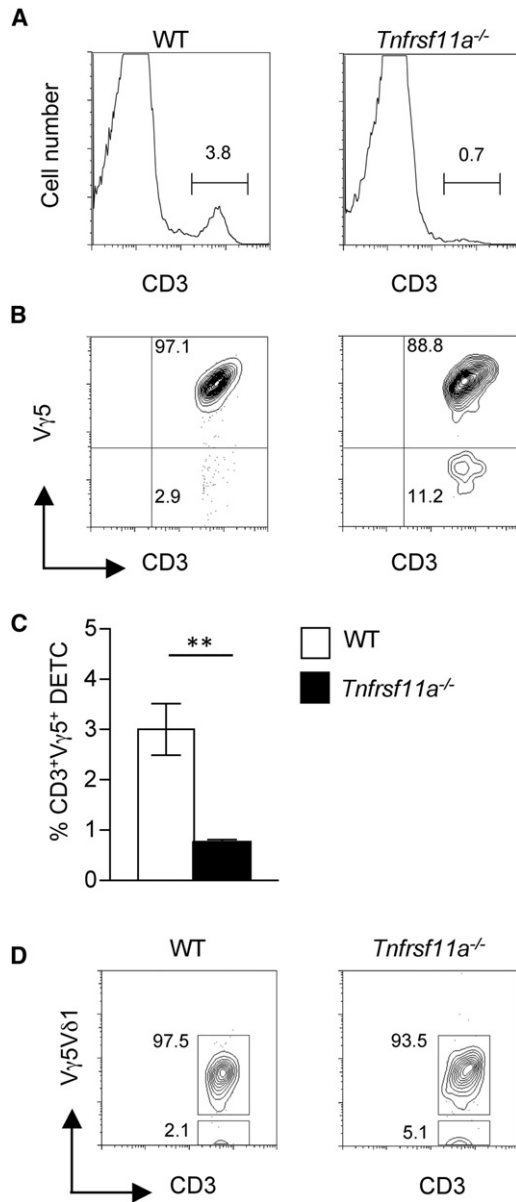


Figure 6. Loss of Rank Impacts Invariant V γ 5⁺ Dendritic Epidermal T Cells

(A and B) Epidermal sheets from WT and *Tnfrsf11a*^{-/-} neonatal mice were analyzed by flow cytometry for CD3⁺ T cells (A), together with expression of the V γ 5TCR (B).

(C) Frequency of CD3⁺V γ 5⁺ DETCs in WT (white bars) and *Tnfrsf11a*^{-/-} (black bars) neonatal epidemics. Asterisks indicate a statistically significant difference where $p < 0.01$.

(D) Flow cytometric analysis of epidermal sheets from neonatal WT and Rank-deficient mice for expression of CD3 together with the V γ 5V δ 1TCR. Cells are gated on CD3⁺ events, and numbers are percent of CD3⁺ cells.

dendritic cells (Lei et al., 2011). Thus, the establishment of medullary thymic areas containing Aire-expressing epithelial cells represents an important and multifaceted component of intrathymic tolerance mechanisms. Of equal importance, recent data show that the nascent cohorts of Aire⁺ mTECs that are

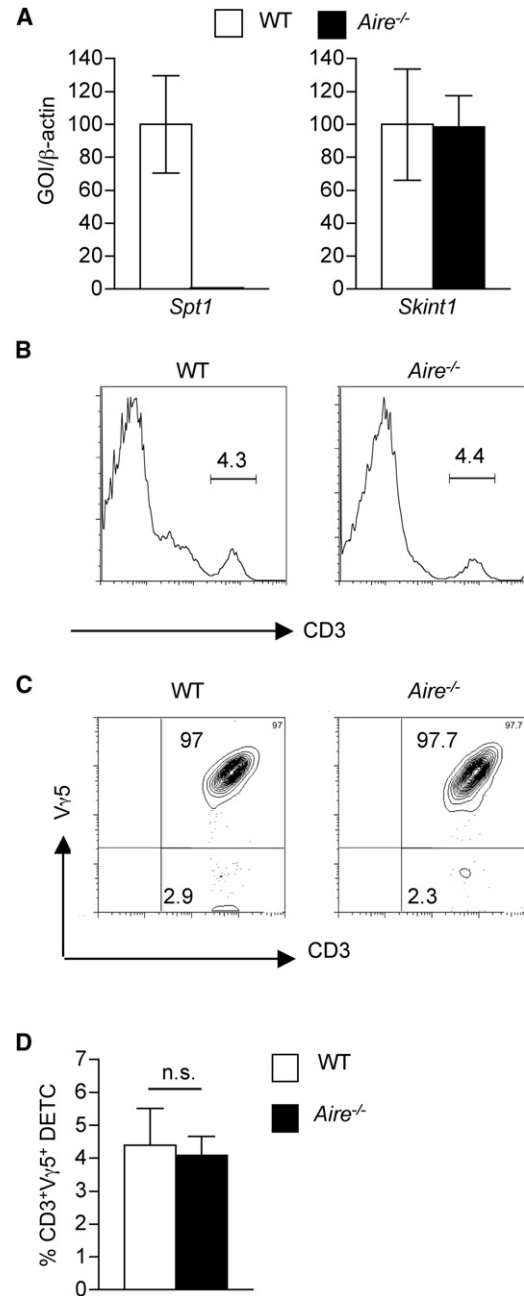


Figure 7. Skint-1 Expression Occurs Independently of Aire, and *Aire*^{-/-} Mice Display Normal Development of Invariant V γ 5⁺ DETCs

(A) Quantitative PCR analysis of expression of the indicated genes in neonatal thymuses from WT (white bars) and *Aire*^{-/-} (black bars) mice.

(B and C) Epidermal preparations from WT and *Aire*^{-/-} neonates were analyzed by flow cytometry for the presence of CD3⁺ T cells (B), together with antibodies to the V γ 5TCR (C).

(D) Frequency of CD3⁺V γ 5⁺ DETCs in WT (white bars) and *Aire*^{-/-} (black bars) neonates. n.s. is not significant.

generated in the fetal and neonatal periods are both essential and sufficient for tolerance induction (Guerau-de-Arellano et al., 2009). Moreover, although shaping of the $\alpha\beta$ T cell repertoire fosters Aire⁺ mTEC differentiation in the adult thymus

(Hikosaka et al., 2008; Irla et al., 2008), the initial emergence of Aire⁺ mTECs during these key developmental stages occurs independently of, and prior to, the generation of mature thymocytes by positive selection (Derbinski et al., 2001; White et al., 2008; Zuklys et al., 2000). Collectively, these observations suggest the existence of an alternative, perhaps developmental stage-specific, mechanism that enables functionally competent intrathymic medullary microenvironments to be in place prior to $\alpha\beta$ T cell selection events, where they impose tolerance induction on the first cohorts of newly generated T cells.

Here, we show that initial thymus medulla formation, involving generation of the first cohorts of Aire⁺ mTECs, occurs as a result of a cellular combination of innate LTi cells and progenitors of an invariant T cell (DETC) subset that is defined by invariant expression of the V γ 5V δ 1TCR. Indeed, we found that *Tcrd*^{-/-} mice lack a significant fraction of the Aire⁺ mTEC compartment and that DETC progenitors express Rankl, a known regulator of Aire⁺ mTEC development. Our finding that both immature CD45RB^{lo} and mature CD45RB^{hi} V γ 5⁺ thymocytes express Rankl suggests that the ability of V γ 5⁺ thymocytes to influence mTEC development is not limited to the mature stages of their development. This is in contrast to the impact made by $\alpha\beta$ T cells, which require continued maturation from the CD4⁺CD8⁺ to the CD4⁺ or CD8⁺ stage to express Rankl (Hikosaka et al., 2008). Rather, a scenario can be envisaged that during hematopoietic crosstalk for the initiation of mTEC development, and within individual medullary areas of embryonic thymus, simultaneous input from LTi and V γ 5⁺ thymocytes can occur, rather than a temporal sequence that first involves LTi cells and then mature V γ 5⁺ thymocytes, the latter generated as a result of Skint-1-mediated differentiation. Interestingly, although analysis of *Tcrd*^{-/-} × *Rorc*^{-/-} double-deficient mice showed a further reduction in the frequency of Aire⁺ mTECs as compared to single mutants, small numbers of Aire⁺ mTECs remain. Whether these cells arise as a result of the early emergence of mature Rankl⁺ $\alpha\beta$ TCR⁺ thymocytes that are already known to influence mTEC development or through Rankl provision by an additional hematopoietic cell type is currently unknown. Whatever the case, our finding suggests that, at this early developmental stage, LTi and $\gamma\delta$ T cells combine to influence thymus medulla formation.

That initial embryonic thymus medulla formation is influenced by invariant DETC progenitors appears relevant to their highly selective and timed appearance in thymus ontogeny at around E14–E16 (Havran and Allison, 1988), parallel to the emergence of the first Aire-expressing medullary environments. It is currently unclear whether the ability of cells of the $\gamma\delta$ T cell lineage to direct Aire⁺ mTEC development is limited to those expressing the V γ 5TCR. However, it is interesting to note that $\gamma\delta$ TCR⁺ thymocytes in the adult also express Rankl (Hikosaka et al., 2008), and mTEC numbers are reduced in adult *Tcrd*^{-/-} mice (Hikosaka et al., 2008). Thus, in the adult thymus, $\alpha\beta$ TCR⁺ and $\gamma\delta$ TCR⁺ thymocytes may synergize to regulate thymus medulla development.

Importantly, the present results also show that the development of V γ 5⁺ DETC progenitors and Aire⁺ mTECs in the fetal thymus are reciprocally linked, in that the intrathymic crosstalk of the two cell types is required to generate epithelial environments that support and select $\gamma\delta$ T cells. Thus, we show

that Rank-mediated stimulation of immature mTECs induces expression of *Skint1*, and that in the absence of Rank expression there is a block in the maturation of V γ 5TCR⁺ thymocytes and a corresponding increase in the frequency of CD3⁺ epidermal-resident DETC-bearing TCRs encoded by other V γ gene segments. Collectively, these findings therefore establish a new role for intrathymic expression of Rank in the development of invariant $\gamma\delta$ T cells, related to its capacity to promote maturation of mTECs, the intrathymic source of Skint-1. However, despite their similar expression patterns, *Skint1* gene expression in mTECs is Aire independent and the invariant DETC T cell pool is intact in neonatal *Aire*^{-/-} mice. Although $\gamma\delta$ T cells are not grossly affected in the context of *Aire* deficiency in mouse and man (Tuovinen et al., 2009), the possibility that there are alterations in the fine specificities of diverse, adaptive $\gamma\delta$ T cells merits further study. Thus, the induction of Aire⁺ mTECs by the first wave of $\gamma\delta$ T cells may limit the emergence of potentially harmful, self-reactive $\gamma\delta$ TCR⁺ and $\alpha\beta$ TCR⁺ cells.

EXPERIMENTAL PROCEDURES

Mice

The following mice were used in this study: C57BL/6, *Tcrd*^{-/-} (Itoharu et al., 1993), *Rorc*^{-/-} (Sun et al., 2000), *Tnfrsf11a*^{-/-} (Rossi et al., 2007), *Relb*^{-/-} (Weih et al., 1995), and *Aire*^{-/-} (Ramsey et al., 2002). *Tcrd*^{-/-} and *Rorc*^{-/-} were intercrossed at The University of Birmingham to generate *Tcrd*^{-/-} × *Rorc*^{-/-} double knockout (DKO) mice. All mice were bred and maintained at the Biomedical Services Unit, University of Birmingham, except for *Aire*^{-/-} mice, which were housed at Biomedical Services, John Radcliffe Hospital, University of Oxford. For the generation of timed pregnancies, day of detection of a vaginal plug was designated day zero. All experiments were performed under the authorization of the UK Home Office.

Antibodies and Immunoconjugates

The following antibodies were used for flow cytometry: anti-TCRV γ 5 (clone 536, BD PharMingen), anti-V γ 5V δ 1 (clone 17D1), anti-CD3 (clone 145.2C11, BD PharMingen), anti-CD205 (clone NLDC-145, Abcam), anti-CD40 (clone 3/23, BD PharMingen), anti-EpCAM1 (clone G8.8, kind gift of A. Farr, University of Washington), anti-CD45 (clone 30-F11, eBioscience), anti-CD45RB (clone C363.16A, eBioscience), anti-Aire (clone H512, kind gift of H. Scott, Adelaide University), anti-Ly51 (clone 6C3, eBioscience), and anti-CD80 (clone 16-10A1, eBioscience). Biotinylated antibodies were revealed with streptavidin conjugated to Alexa Fluor 555. The following additional primary antibodies were used for confocal analysis: anti-medullary epithelium (clone ERTR5, kind gift of W. van Ewijk), anti-CD8 (clone CT-CD8b, eBioscience), anti-ROR γ (clone AFKJS-9, eBioscience), anti-IL-7R α (clone A7R34, eBioscience), pan- $\gamma\delta$ TCR (clone GL3, eBioscience), and goat anti-Aire (D-17, Santa Cruz Biotechnology). For detection of polyclonal goat anti-Aire, anti-goat Alexa Fluor 594 (Invitrogen) was used. For detection of ERTR5 antibody, anti-Rat IgM Alexa Fluor 594 (Invitrogen) was used. Detection of ROR γ Abs was achieved with anti-rat IgG FITC (Jackson ImmunoResearch), then anti FITC-Alexa Fluor 488 (Invitrogen), and finally anti-rabbit IgG-Alexa Fluor 488 (Invitrogen).

Real-Time PCR Analysis

cDNA was obtained from purified mRNA with μ Macs One-step cDNA synthesis kit, according to the manufacturer's instructions (Miltényi Biotech). Real-time PCR was performed with SYBR Green with primers specific for *ACTB* (β -actin), *Aire*, *Spt1* (salivary protein 1), and *Skint1* on the Rotor-Gene-3000 PCR machine (Corbett Research, NSW, Australia). PCRs were conducted in replicates in 15 μ l volumes in reaction buffer containing 1 × SensiMix QPCR SYBR No ROX Mix (Quantace) and 200 nM of primers for *Aire*, *Rankl*, *Spt1*, and *Skint1*; *ACTB* primers were designed and synthesized as a Quantitect Primer Assay (QIAGEN). After an initial denaturation step (95°C for 10 min), cycling was performed at 95°C for 15 s, 60°C (*ACTB*, *Spt1*, and *Skint1*) or 62°C (*Aire* and *Rankl*) for 20 s, and 72°C for 15 s (40 cycles). Specific amplification

was verified by melt curve analysis. Reaction amplification efficiency and the Ct values were obtained from Rotor Gene 6.0 software (Corbett Research) with standard curves generated from Mouse Universal cDNA Reference-oligo dT primed (Biochain Institute). Calculation of the relative mRNA expression values for each sample normalized to *ACTB* was performed as described with the Pfaffl quantitation method (Pfaffl, 2001). Fold levels represent the mean (\pm SEM) of replicate reactions and data shown are representative of at least two independent experiments. Information on primers is summarized in Table S1.

Flow Cytometry and Cell Sorting of Thymic Stromal Cells and Thymocytes

Multicolor flow cytometry was performed as described (Shakib et al., 2009) with BD-LSR and BD-Fortessa machines (BD Biosciences); cell sorting was performed with a Beckman Coulter XDP MoFlo (Beckman Coulter). To perform intracellular staining of Aire, RTOCs were disaggregated with 0.25% trypsin then surface stained with anti-CD45, anti-Ly51, and anti-eEpCAM1. Cells were washed in PBS, incubated in IC Fixation buffer (eBioscience) at 4°C for 60 min, and then washed twice in permeabilization buffer (eBioscience). A staining solution of Alexa Fluor 488-conjugated anti-Aire in permeabilization buffer was added to cells, after incubation for 30 min at 4°C. Cells were washed in permeabilization buffer twice then analyzed by flow cytometry. CD3⁺V γ 5⁺ thymocytes were purified from E15 thymus lobes explanted in organ culture for 7 days. In some experiments, total CD3⁺V γ 5⁺ thymocytes were sorted into immature and mature subsets on the basis of low and high levels of CD45RB, respectively. LTi were prepared from organ-cultured E15 fetal spleens as described (Rossi et al., 2007), and both CD4⁺CD8⁺ thymocytes and CD4⁺CD8⁻ α β TCR^{hi} thymocytes were sorted from mechanically disrupted adult thymus preparations. To isolate TEC subsets for qPCR analysis, CD40⁻CD205⁺ immature cTECs (Shakib et al., 2009) were MoFlo sorted from total EpCAM1⁺CD45⁻ cells from E16 thymus, whereas total EpCAM1⁺CD45⁻ cells from E15+7d FTOCs were used to isolate CD40⁺CD205⁺ mature cTECs, CD80⁺CD205⁻ mature mTECs, and CD80⁻CD205⁻ immature mTECs (Shakib et al., 2009).

Confocal Microscopy and Quantitation

Images were obtained with a LSM 780 microscope (Zeiss) and analyzed with Zen software (Zeiss). For images with six different stains, expression of ERTR5 from a serial section was imported with Zen software. For quantitation, medullary areas were measured with Zen software and cells of a given phenotype counted.

Fetal Thymus and Reaggregate Thymus Organ Culture

Freshly dissected E15 fetal thymus lobes were placed in organ culture conditions for between 5 and 7 days, as described (Shakib et al., 2009). 1.35 mM 2 deoxyguanosine was added to cultures to deplete hematopoietic cells (Jenkinson et al., 1992); in some experiments, anti-Rank (10 μ g/ml, R&D Systems) was added for a further 3 days to induce Aire⁺ mTEC development (Rossi et al., 2007). To prepare reaggregate thymus cultures (Jenkinson et al., 1992), 2-dGuo-treated thymus lobes were trypsinized, depleted of remaining CD45⁺ cells, and then mixed at a 5:1 ratio with either freshly prepared V γ 5⁺ thymocytes or LTi cells. The resultant cell suspension was then deposited onto the surface of a 0.8 μ m Nucleopore filter in organ culture. At the indicated time point, RTOCs were disaggregated with 0.25% trypsin/0.02% EDTA and analyzed by flow cytometry. For experiments involving blockade of Rankl, RTOCs were established with either V γ 5 thymocytes or LTi, as described above, and recombinant OPG (R&D Systems) was added to cultures at a final concentration of 10 μ g/ml.

Analysis of DETCs in Epidermal Sheets

For FACS analysis, skin from the backs of neonatal (between 0 and 2 days) mice was placed dermal side down in 20 mM EDTA (Sigma) at 37°C for 2 hr. Epidermal sheets were then peeled from the dermis, washed in PBS, and incubated in 1 mg/ml Collagenase D (Roche) and 40 μ g/ml DNase (Sigma) for 1 hr. Cells were filtered and stained for anti-TCRV γ 5 FITC (clone 536, BD Biosciences) and anti-CD3 APC (clone145.2C11 eBioscience).

SUPPLEMENTAL INFORMATION

Supplemental Information includes one table and can be found with this article online at doi:10.1016/j.immuni.2012.01.016.

ACKNOWLEDGMENTS

We thank R. Bird for assistance with cell sorting and BMSU staff for excellent animal husbandry. This work was supported by an MRC Programme grant to E.J.J., P.J.L.L., and G.A. and a Wellcome Trust Programme to P.J.L.L. and G.A.

Received: June 6, 2011

Revised: December 15, 2011

Accepted: January 12, 2012

Published online: March 15, 2012

REFERENCES

- Akiyama, T., Maeda, S., Yamane, S., Ogino, K., Kasai, M., Kajiuira, F., Matsumoto, M., and Inoue, J. (2005). Dependence of self-tolerance on TRAF6-directed development of thymic stroma. *Science* 308, 248–251.
- Akiyama, T., Shimo, Y., Yanai, H., Qin, J., Ohshima, D., Maruyama, Y., Asaumi, Y., Kitazawa, J., Takayanagi, H., Penninger, J.M., et al. (2008). The tumor necrosis factor family receptors RANK and CD40 cooperatively establish the thymic medullary microenvironment and self-tolerance. *Immunity* 29, 423–437.
- Anderson, M.S., Venanzi, E.S., Klein, L., Chen, Z., Berzins, S.P., Turley, S.J., von Boehmer, H., Bronson, R., Dierich, A., Benoist, C., and Mathis, D. (2002). Projection of an immunological self shadow within the thymus by the aire protein. *Science* 298, 1395–1401.
- Anderson, G., Lane, P.J., and Jenkinson, E.J. (2007). Generating intrathymic microenvironments to establish T-cell tolerance. *Nat. Rev. Immunol.* 7, 954–963.
- Asarnow, D.M., Kuziel, W.A., Bonyhadi, M., Tigelaar, R.E., Tucker, P.W., and Allison, J.P. (1988). Limited diversity of gamma delta antigen receptor genes of Thy-1+ dendritic epidermal cells. *Cell* 55, 837–847.
- Aschenbrenner, K., D'Cruz, L.M., Vollmann, E.H., Hinterberger, M., Emmerich, J., Swee, L.K., Rolink, A., and Klein, L. (2007). Selection of Foxp3+ regulatory T cells specific for self antigen expressed and presented by Aire+ medullary thymic epithelial cells. *Nat. Immunol.* 8, 351–358.
- Barbee, S.D., Woodward, M.J., Turchinovich, G., Mention, J.J., Lewis, J.M., Boyden, L.M., Lifton, R.P., Tigelaar, R., and Hayday, A.C. (2011). Skint-1 is a highly specific, unique selecting component for epidermal T cells. *Proc. Natl. Acad. Sci. USA* 108, 3330–3335.
- Björnses, P., Aaltonen, J., Horelli-Kuitunen, N., Yaspo, M.L., and Peltonen, L. (1998). Gene defect behind APECED: a new clue to autoimmunity. *Hum. Mol. Genet.* 7, 1547–1553.
- Boehm, T. (2011). Design principles of adaptive immune systems. *Nat. Rev. Immunol.* 11, 307–317.
- Boehm, T., Scheu, S., Pfeffer, K., and Bleul, C.C. (2003). Thymic medullary epithelial cell differentiation, thymocyte emigration, and the control of autoimmunity require lympho-epithelial cross talk via LTbetaR. *J. Exp. Med.* 198, 757–769.
- Boyden, L.M., Lewis, J.M., Barbee, S.D., Bas, A., Girardi, M., Hayday, A.C., Tigelaar, R.E., and Lifton, R.P. (2008). Skint1, the prototype of a newly identified immunoglobulin superfamily gene cluster, positively selects epidermal gammadelta T cells. *Nat. Genet.* 40, 656–662.
- Burkly, L., Hession, C., Ogata, L., Reilly, C., Marconi, L.A., Olson, D., Tizard, R., Cate, R., and Lo, D. (1995). Expression of reIB is required for the development of thymic medulla and dendritic cells. *Nature* 373, 531–536.
- Derbinski, J., Schulte, A., Kyewski, B., and Klein, L. (2001). Promiscuous gene expression in medullary thymic epithelial cells mirrors the peripheral self. *Nat. Immunol.* 2, 1032–1039.

- Derbinski, J., Gäbler, J., Brors, B., Tierling, S., Jonnakuty, S., Hergenahn, M., Peltonen, L., Walter, J., and Kyewski, B. (2005). Promiscuous gene expression in thymic epithelial cells is regulated at multiple levels. *J. Exp. Med.* *202*, 33–45.
- Eberl, G., Marmon, S., Sunshine, M.J., Rennert, P.D., Choi, Y., and Littman, D.R. (2004). An essential function for the nuclear receptor ROR γ (t) in the generation of fetal lymphoid tissue inducer cells. *Nat. Immunol.* *5*, 64–73.
- Farr, A., Hosier, S., Nelson, A., Itoharu, S., and Tonegawa, S. (1990). Distribution of thymocytes expressing gamma delta receptors in the murine thymus during development. *J. Immunol.* *144*, 492–498.
- Finke, D., Acha-Orbea, H., Mattis, A., Lipp, M., and Kraehenbuhl, J. (2002). CD4+CD3- cells induce Peyer's patch development: role of alpha4beta1 integrin activation by CXCR5. *Immunity* *17*, 363–373.
- Gäbler, J., Arnold, J., and Kyewski, B. (2007). Promiscuous gene expression and the developmental dynamics of medullary thymic epithelial cells. *Eur. J. Immunol.* *37*, 3363–3372.
- Gallegos, A.M., and Bevan, M.J. (2004). Central tolerance to tissue-specific antigens mediated by direct and indirect antigen presentation. *J. Exp. Med.* *200*, 1039–1049.
- Gommeaux, J., Grégoire, C., Nguessan, P., Richelme, M., Malissen, M., Guerder, S., Malissen, B., and Carrier, A. (2009). Thymus-specific serine protease regulates positive selection of a subset of CD4+ thymocytes. *Eur. J. Immunol.* *39*, 956–964.
- Gray, D., Abramson, J., Benoist, C., and Mathis, D. (2007). Proliferative arrest and rapid turnover of thymic epithelial cells expressing Aire. *J. Exp. Med.* *204*, 2521–2528.
- Guerau-de-Arellano, M., Martinic, M., Benoist, C., and Mathis, D. (2009). Neonatal tolerance revisited: a perinatal window for Aire control of autoimmunity. *J. Exp. Med.* *206*, 1245–1252.
- Havran, W.L., and Allison, J.P. (1988). Developmentally ordered appearance of thymocytes expressing different T-cell antigen receptors. *Nature* *335*, 443–445.
- Havran, W.L., and Allison, J.P. (1990). Origin of Thy-1+ dendritic epidermal cells of adult mice from fetal thymic precursors. *Nature* *344*, 68–70.
- Heino, M., Peterson, P., Kudoh, J., Nagamine, K., Lagerstedt, A., Ovod, V., Ranki, A., Rantala, I., Nieminen, M., Tuukkanen, J., et al. (1999). Autoimmune regulator is expressed in the cells regulating immune tolerance in thymus medulla. *Biochem. Biophys. Res. Commun.* *257*, 821–825.
- Heino, M., Peterson, P., Sillanpää, N., Guérin, S., Wu, L., Anderson, G., Scott, H.S., Antonarakis, S.E., Kudoh, J., Shimizu, N., et al. (2000). RNA and protein expression of the murine autoimmune regulator gene (Aire) in normal, RelB-deficient and in NOD mouse. *Eur. J. Immunol.* *30*, 1884–1893.
- Hikosaka, Y., Nitta, T., Ohigashi, I., Yano, K., Ishimaru, N., Hayashi, Y., Matsumoto, M., Matsuo, K., Penninger, J.M., Takayanagi, H., et al. (2008). The cytokine RANKL produced by positively selected thymocytes fosters medullary thymic epithelial cells that express autoimmune regulator. *Immunity* *29*, 438–450.
- Honey, K., Nakagawa, T., Peters, C., and Rudensky, A. (2002). Cathepsin L regulates CD4+ T cell selection independently of its effect on invariant chain: a role in the generation of positively selecting peptide ligands. *J. Exp. Med.* *195*, 1349–1358.
- Ikuta, K., Kina, T., MacNeil, I., Uchida, N., Peault, B., Chien, Y.H., and Weissman, I.L. (1990). A developmental switch in thymic lymphocyte maturation potential occurs at the level of hematopoietic stem cells. *Cell* *62*, 863–874.
- Irla, M., Hugues, S., Gill, J., Nitta, T., Hikosaka, Y., Williams, I.R., Hubert, F.X., Scott, H.S., Takahama, Y., Holländer, G.A., and Reith, W. (2008). Autoantigen-specific interactions with CD4+ thymocytes control mature medullary thymic epithelial cell cellularity. *Immunity* *29*, 451–463.
- Itoharu, S., Mombaerts, P., Lafaille, J., Iacomini, J., Nelson, A., Clarke, A.R., Hooper, M.L., Farr, A., and Tonegawa, S. (1993). T cell receptor delta gene mutant mice: independent generation of alpha beta T cells and programmed rearrangements of gamma delta TCR genes. *Cell* *72*, 337–348.
- Jenkinson, E.J., Anderson, G., and Owen, J.J. (1992). Studies on T cell maturation on defined thymic stromal cell populations in vitro. *J. Exp. Med.* *176*, 845–853.
- Jiang, W., Swiggard, W.J., Heufler, C., Peng, M., Mirza, A., Steinman, R.M., and Nussenzweig, M.C. (1995). The receptor DEC-205 expressed by dendritic cells and thymic epithelial cells is involved in antigen processing. *Nature* *375*, 151–155.
- Kajiura, F., Sun, S., Nomura, T., Izumi, K., Ueno, T., Bando, Y., Kuroda, N., Han, H., Li, Y., Matsushima, A., et al. (2004). NF-kappa B-inducing kinase establishes self-tolerance in a thymic stroma-dependent manner. *J. Immunol.* *172*, 2067–2075.
- Kyewski, B., and Klein, L. (2006). A central role for central tolerance. *Annu. Rev. Immunol.* *24*, 571–606.
- Lei, Y., Ripen, A.M., Ishimaru, N., Ohigashi, I., Nagasawa, T., Jeker, L.T., Bösl, M.R., Holländer, G.A., Hayashi, Y., Malefyt, Rde.W., et al. (2011). Aire-dependent production of XCL1 mediates medullary accumulation of thymic dendritic cells and contributes to regulatory T cell development. *J. Exp. Med.* *208*, 383–394.
- Lewis, J.M., Girardi, M., Roberts, S.J., Barbee, S.D., Hayday, A.C., and Tigelaar, R.E. (2006). Selection of the cutaneous intraepithelial gammadelta+ T cell repertoire by a thymic stromal determinant. *Nat. Immunol.* *7*, 843–850.
- Liston, A., Lesage, S., Wilson, J., Peltonen, L., and Goodnow, C.C. (2003). Aire regulates negative selection of organ-specific T cells. *Nat. Immunol.* *4*, 350–354.
- Mallick-Wood, C.A., Lewis, J.M., Richie, L.I., Owen, M.J., Tigelaar, R.E., and Hayday, A.C. (1998). Conservation of T cell receptor conformation in epidermal gammadelta cells with disrupted primary Vgamma gene usage. *Science* *279*, 1729–1733.
- Mathis, D., and Benoist, C. (2009). Aire. *Annu. Rev. Immunol.* *27*, 287–312.
- Mebius, R.E. (2003). Organogenesis of lymphoid tissues. *Nat. Rev. Immunol.* *3*, 292–303.
- Mebius, R.E., Rennert, P., and Weissman, I.L. (1997). Developing lymph nodes collect CD4+CD3- LTbeta+ cells that can differentiate to APC, NK cells, and follicular cells but not T or B cells. *Immunity* *7*, 493–504.
- Murata, S., Sasaki, K., Kishimoto, T., Niwa, S., Hayashi, H., Takahama, Y., and Tanaka, K. (2007). Regulation of CD8+ T cell development by thymus-specific proteasomes. *Science* *316*, 1349–1353.
- Naspetti, M., Aurrand-Lions, M., DeKoning, J., Malissen, M., Galland, F., Lo, D., and Naquet, P. (1997). Thymocytes and RelB-dependent medullary epithelial cells provide growth-promoting and organization signals, respectively, to thymic medullary stromal cells. *Eur. J. Immunol.* *27*, 1392–1397.
- Nitta, T., Murata, S., Sasaki, K., Fujii, H., Ripen, A.M., Ishimaru, N., Koyasu, S., Tanaka, K., and Takahama, Y. (2010). Thymoproteasome shapes immunocompetent repertoire of CD8+ T cells. *Immunity* *32*, 29–40.
- Passoni, L., Hoffman, E.S., Kim, S., Crompton, T., Pao, W., Dong, M.Q., Owen, M.J., and Hayday, A.C. (1997). Intrathymic delta selection events in gamma-delta cell development. *Immunity* *7*, 83–95.
- Pennington, D.J., Silva-Santos, B., Shires, J., Theodoridis, E., Pollitt, C., Wise, E.L., Tigelaar, R.E., Owen, M.J., and Hayday, A.C. (2003). The inter-relatedness and interdependence of mouse T cell receptor gammadelta+ and alphabeta+ cells. *Nat. Immunol.* *4*, 991–998.
- Pfaffl, M.W. (2001). A new mathematical model for relative quantification in real-time RT-PCR. *Nucleic Acids Res.* *29*, e45.
- Ramsey, C., Winqvist, O., Puhakka, L., Halonen, M., Moro, A., Kämpe, O., Eskelin, P., Pelto-Huikko, M., and Peltonen, L. (2002). Aire deficient mice develop multiple features of APECED phenotype and show altered immune response. *Hum. Mol. Genet.* *11*, 397–409.
- Ripen, A.M., Nitta, T., Murata, S., Tanaka, K., and Takahama, Y. (2011). Ontogeny of thymic cortical epithelial cells expressing the thymoproteasome subunit β 5t. *Eur. J. Immunol.* *41*, 1278–1287.
- Rossi, S.W., Kim, M.Y., Leibbrandt, A., Parnell, S.M., Jenkinson, W.E., Glanville, S.H., McConnell, F.M., Scott, H.S., Penninger, J.M., Jenkinson, E.J., et al. (2007). RANK signals from CD4(+)-3(-) inducer cells regulate development of Aire-expressing epithelial cells in the thymic medulla. *J. Exp. Med.* *204*, 1267–1272.

- Shakib, S., Desanti, G.E., Jenkinson, W.E., Parnell, S.M., Jenkinson, E.J., and Anderson, G. (2009). Checkpoints in the development of thymic cortical epithelial cells. *J. Immunol.* *182*, 130–137.
- Shores, E.W., Van Ewijk, W., and Singer, A. (1991). Disorganization and restoration of thymic medullary epithelial cells in T cell receptor-negative scid mice: evidence that receptor-bearing lymphocytes influence maturation of the thymic microenvironment. *Eur. J. Immunol.* *21*, 1657–1661.
- Sun, Z., Unutmaz, D., Zou, Y.R., Sunshine, M.J., Pierani, A., Brenner-Morton, S., Mebius, R.E., and Littman, D.R. (2000). Requirement for ROR γ in thymocyte survival and lymphoid organ development. *Science* *288*, 2369–2373.
- Surh, C.D., Gao, E.K., Kosaka, H., Lo, D., Ahn, C., Murphy, D.B., Karlsson, L., Peterson, P., and Sprent, J. (1992). Two subsets of epithelial cells in the thymic medulla. *J. Exp. Med.* *176*, 495–505.
- Takahama, Y. (2006). Journey through the thymus: stromal guides for T-cell development and selection. *Nat. Rev. Immunol.* *6*, 127–135.
- Tuovinen, H., Pöntynen, N., Gylling, M., Kekäläinen, E., Perheentupa, J., Miettinen, A., and Arstila, T.P. (2009). $\gamma\delta$ T cells develop independently of Aire. *Cell. Immunol.* *257*, 5–12.
- Weih, F., Carrasco, D., Durham, S.K., Barton, D.S., Rizzo, C.A., Ryseck, R.P., Lira, S.A., and Bravo, R. (1995). Multiorgan inflammation and hematopoietic abnormalities in mice with a targeted disruption of RelB, a member of the NF- κ B/Rel family. *Cell* *80*, 331–340.
- White, A.J., Withers, D.R., Parnell, S.M., Scott, H.S., Finke, D., Lane, P.J., Jenkinson, E.J., and Anderson, G. (2008). Sequential phases in the development of Aire-expressing medullary thymic epithelial cells involve distinct cellular input. *Eur. J. Immunol.* *38*, 942–947.
- Xiong, N., Kang, C., and Raulet, D.H. (2004). Positive selection of dendritic epidermal $\gamma\delta$ T cell precursors in the fetal thymus determines expression of skin-homing receptors. *Immunity* *21*, 121–131.
- Zhu, M., and Fu, Y.X. (2008). Coordinating development of medullary thymic epithelial cells. *Immunity* *29*, 386–388.
- Zuklys, S., Balciunaite, G., Agarwal, A., Fasler-Kan, E., Palmer, E., and Holländer, G.A. (2000). Normal thymic architecture and negative selection are associated with Aire expression, the gene defective in the autoimmune-polyendocrinopathy-candidiasis-ectodermal dystrophy (APECED). *J. Immunol.* *165*, 1976–1983.