



# THE UNIVERSITY *of* EDINBURGH

## Edinburgh Research Explorer

### **Amino-alcohol cyclization: selective synthesis of lactams and cyclic amines from amino-alcohols**

**Citation for published version:**

Pingen, D & Vogt, D 2014, 'Amino-alcohol cyclization: selective synthesis of lactams and cyclic amines from amino-alcohols' *Catalysis Science & Technology*, vol. 4, no. 1, pp. 47-52. DOI: 10.1039/c3cy00513e

**Digital Object Identifier (DOI):**

[10.1039/c3cy00513e](https://doi.org/10.1039/c3cy00513e)

**Link:**

[Link to publication record in Edinburgh Research Explorer](#)

**Document Version:**

Publisher's PDF, also known as Version of record

**Published In:**

*Catalysis Science & Technology*

**Publisher Rights Statement:**

This article is licensed under a Creative Commons Attribution 3.0 Unported Licence.

**General rights**

Copyright for the publications made accessible via the Edinburgh Research Explorer is retained by the author(s) and / or other copyright owners and it is a condition of accessing these publications that users recognise and abide by the legal requirements associated with these rights.

**Take down policy**

The University of Edinburgh has made every reasonable effort to ensure that Edinburgh Research Explorer content complies with UK legislation. If you believe that the public display of this file breaches copyright please contact [openaccess@ed.ac.uk](mailto:openaccess@ed.ac.uk) providing details, and we will remove access to the work immediately and investigate your claim.



Amino-alcohol cyclization: selective synthesis of lactams and cyclic amines from amino-alcohols<sup>†‡</sup>

Cite this: DOI: 10.1039/c3cy00513e

Dennis Pinggen and Dieter Vogt\*

Received 17th July 2013,  
Accepted 15th August 2013

DOI: 10.1039/c3cy00513e

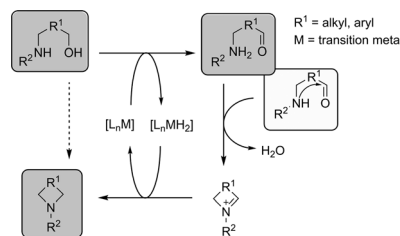
www.rsc.org/catalysis

By employing an amination catalyst, previously used in the direct synthesis of amines from alcohol with ammonia, *n*-amino-alcohols could be selectively cyclized to either the amide or the amine. By the addition of water, the amine could be produced as the major product whereas adding a sacrificial ketone as a hydrogen acceptor resulted in the amide as the major product. Without an additive a mixture of both the amine and the amide was observed. *N*-substituted amino-alcohols solely gave cyclic amines under these conditions. From 2-(*n*-alkanol) anilines the cyclic amines were produced, where the *n*-propanol derivative selectively formed quinoline as the major product.

## Introduction

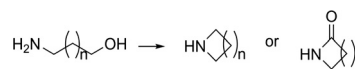
Amines and amides are versatile building blocks for intermediates and fine chemicals. Much interest has been addressed to the direct catalytic synthesis of these types of compounds *via* alcohols and amines.<sup>1–3</sup> The selective conversion of alcohols with amines would provide sustainable and efficient routes to those building blocks. Cyclic amines and amides are very important structural features in pharmaceutical chemistry.<sup>4</sup> In syntheses of both natural products and medicinal compounds, alcohol and amine moieties are often combined to form new cyclic compounds. However, the alcohol group is often derivatized to create a leaving group. Therefore it is highly desirable to develop catalysts that are able to directly perform these reactions without the need for protective groups.

The group of Milstein recently developed a catalytic system containing an acridine based diphosphine and RuHCl(CO)(PPh<sub>3</sub>)<sub>3</sub>, which was able to convert primary alcohols to primary amines with ammonia.<sup>5</sup> However, secondary amines remained untouched. Shortly after that, our group and simultaneously the group of Beller<sup>7</sup> reported a highly selective Ru catalyst system, which was able to convert secondary alcohols with ammonia to primary amines. This transformation follows the concept of 'Hydrogen Shuttling', in which an alcohol is first dehydrogenated to the corresponding carbonyl compound that then undergoes condensation with an amine to form an imine, which is subsequently hydrogenated to the amine (Scheme 1).



Scheme 1 "Hydrogen Shuttling" in the intramolecular amino-alcohol cyclization.

Exploring the potential of this catalytic system gave rise to intramolecular reactions between amines and alcohols. Examples in which amino-alcohols are cyclized go back to the late 1940's, where Woods and Sanders reported the cyclization of 5-amino-1-pentanol.<sup>8</sup> In the early 1980's, a few examples are known in which amino-alcohols are cyclized to the corresponding cyclic amines by applying RuH<sub>2</sub>(PPh<sub>3</sub>)<sub>4</sub> as a catalyst.<sup>9</sup> Furthermore, Bartók reported RuCl<sub>2</sub>(PPh<sub>3</sub>)<sub>4</sub> as a catalyst for *N*-substituted amino-alcohol cyclization (Scheme 2).<sup>10</sup>



Scheme 2 A general reaction scheme for amino-alcohol cyclization.

Later, Murahashi showed the cyclization of 1,4- and 1,5-amino-alcohols to cyclic amides by applying a hydrogen acceptor. However, only moderate yields and selectivities were obtained.<sup>11</sup> Van Koten's group performed reactions of diols with aniline employing Ru-pincer complexes. Here it was found that the cyclization of the amino-alcohol was slow and incomplete, giving mainly mono-alkylated products.<sup>12</sup> In recent years, more examples have been developed aiming at the cyclic amide,<sup>13</sup> although the reactions often required significant amounts of base.<sup>14–17</sup>

Industrial Chemistry, School of Chemistry, University of Edinburgh, King's Buildings, West Mains Road, Edinburgh, EH9 3JJ, Scotland, UK.

E-mail: D.Vogt@ed.ac.uk

<sup>†</sup> Electronic supplementary information (ESI) available. See DOI: 10.1039/c3cy00513e

<sup>‡</sup> Celebrating 300 years of Chemistry at Edinburgh



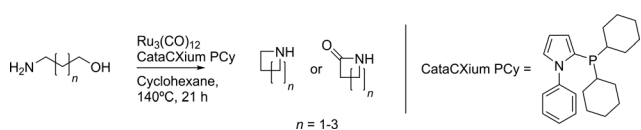
## Results and discussion

As  $\text{Ru}_3(\text{CO})_{12}$ /CataCXium<sup>®</sup> PCy was shown to be a very effective catalytic system for alcohol amination,<sup>6</sup> we decided to use this system for the cyclization of amino-alcohols (Scheme 3). The full conversion of 5-amino-1-pentanol was achieved giving only 2 different products: piperidine and piperidone. Table 1 summarizes the results of the cyclization of several commercially available  $\alpha,\omega$ -amino-alcohols. The ratio of amine *versus* amide formation shows a distinct dependence on the ring-size of the product formed.

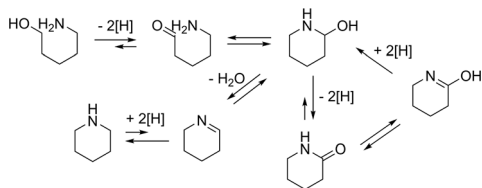
Considering the equilibria involved in the reaction, it can be rationalized how both the cyclic amine as well as the amide are formed (Scheme 4). Two important steps determine the products: the loss of hydrogen or the loss of water. For the amide formation the mechanism of 'Hydrogen Shuttling' is interrupted by the loss of hydrogen.

Some of the intermediates shown in Scheme 4 can indeed be observed during in the reaction (Fig. 1). Only low amounts of the intermediate hemi-aminal are observed, as this is a fairly unstable intermediate, though sufficiently stable in solution for GC and GC-MS analyses. The cyclic imine is more stable and can indeed be observed. The imine builds up quickly in the beginning and then decreases to form the cyclic amine, which is the most favoured product in the reaction.

Following the substrate pathway, it is expected that the addition of water would shift the equilibrium towards the amide (Scheme 4). Remarkably and in contrast with the



**Scheme 3** The cyclization of  $\alpha,\omega$ -amino-alcohols with  $\text{Ru}_3(\text{CO})_{12}$  and CataCXium<sup>®</sup> PCy.



**Scheme 4** The equilibria in the cyclization of 5-amino-1-pentanol.

**Table 1** The cyclization of various commercially available  $\alpha,\omega$ -amino-alcohols catalyzed by  $\text{Ru}_3(\text{CO})_{12}$  and CataCXium<sup>®</sup> PCy<sup>a</sup>

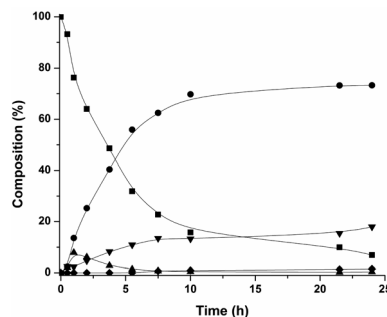
Amino-alcohol	Conversion <sup>b</sup>	Amine selectivity <sup>b</sup> (%)	Amide selectivity <sup>b</sup> (%)	Other (%)
5-Amino-1-pentanol	100	69.5	30.5	0
6-Amino-1-hexanol	67.7	35.4	37.3	27.2 <sup>c</sup>
4-Amino-1-butanol	94.5	88	0	12 <sup>d</sup>
3-Amino-1-propanol	6	0	0	6 <sup>c</sup>

<sup>a</sup> 1 mmol substrate, 0.5 mol%  $\text{Ru}_3(\text{CO})_{12}$ , 3 mol% CataCXium<sup>®</sup> PCy (Ru:P = 1:2), 0.6 mL cyclohexane, 140 °C, 21 h.

<sup>b</sup> Conversions and selectivities determined by GC, based on amino-alcohol consumption and amine/amide production.

<sup>c</sup> Cyclic imine, intermediate towards cyclic amine.

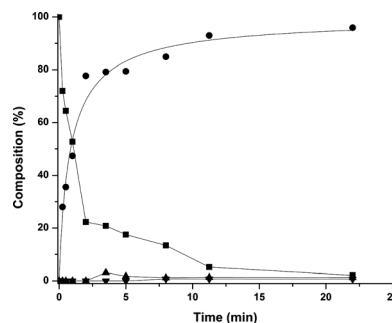
<sup>d</sup> Most likely polymers or oligomers.



**Fig. 1** Reaction profile of the cyclization of 5-amino-1-pentanol. 20 mmol substrate, 0.5 mol%  $\text{Ru}_3(\text{CO})_{12}$ , 3 mol% CataCXium<sup>®</sup> PCy (Ru:P = 1:2), 12 mL cyclohexane, 140 °C,  $\square$  = 5-amino-1-pentanol,  $\bullet$  = piperidine,  $\blacktriangledown$  = piperidone,  $\blacktriangle$  = cyclic imine,  $\blacktriangle$  = cyclic hemi-aminal. The reaction composition was determined by GC and GC-MS, based on amino-alcohol consumption and amine/amide production.

results obtained by Murahashi, the addition of water resulted in a higher selectivity towards the cyclic amine (Fig. 2). Table 2 shows that for all of the substrates tested, the cyclic amine yield and selectivity goes up when water is added; even obtaining complete selectivity for 5-amino-1-pentanol. For the substrates resulting in more strained cyclic products, the selectivity towards the amine also increased.

This interesting result might be due to the use of the very apolar, aprotic solvent; water can act as a weak acid. Water might facilitate the dehydration step by hydrogen bonding to



**Fig. 2** Reaction profile of the cyclization of 5-amino-1-pentanol with water. 15 mmol 5-amino-1-pentanol, 150 mmol  $\text{H}_2\text{O}$ , 9 mL cyclohexane, 0.075 mmol  $\text{Ru}_3(\text{CO})_{12}$ , 0.45 mmol CataCXium<sup>®</sup> PCy, 140 °C, 21 h.  $\square$  = 5-amino-1-pentanol,  $\bullet$  = piperidine,  $\blacktriangledown$  = piperidone,  $\blacktriangle$  = cyclic imine. Reaction composition determined by GC and GC-MS, based on amino-alcohol consumptions and amine/amide production.



**Table 2** The cyclization of various  $\alpha,\omega$ -amino-alcohols catalyzed by  $\text{Ru}_3(\text{CO})_{12}$  and CataCXium<sup>®</sup> PCy in the presence of water<sup>a</sup>

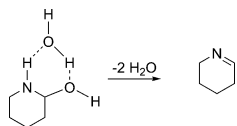
Amino-alcohol	Conversion <sup>b</sup> (%)	Amine selectivity <sup>b</sup> (%)	Amide selectivity <sup>b</sup> (%)	Other (%)
5-Amino-1-pentanol	100	100	0	0
5-Amino-1-pentanol <sup>d</sup>	80	100	0	0
6-Amino-1-hexanol	78.5	81	19	0
4-Amino-1-butanol	100	61.3	0	38.7 <sup>c</sup>
3-Amino-1-propanol	18.6	68	0	30 <sup>c</sup>

<sup>a</sup> 1 mmol substrate, 10 mmol  $\text{H}_2\text{O}$ , 0.5 mol%  $\text{Ru}_3(\text{CO})_{12}$ , 3 mol% CataCXium<sup>®</sup> PCy (Ru:P = 1:2), 0.6 mL cyclohexane, 140 °C, 21 h.

<sup>b</sup> Conversions and selectivities determined by GC, based on amino-alcohol consumption and amine/amide production.

<sup>c</sup> Most likely polymers or oligomers.

<sup>d</sup> 1 mmol phenol added instead of water.

**Fig. 3** The proposed synergistic effect of water in the cyclization of amino-alcohols.

the intermediate cyclic half-aminal, as depicted in Fig. 3. If this is true, replacing water for a fairly acidic non-reactive alcohol should give a similar effect. However, most acids will poison the catalyst or react with the substrates; only a few possibilities are allowed. Replacing water by phenol, indeed gave complete selectivity for the cyclic amine. However, in this case, the conversion was somewhat lower at 80% (Table 2, entry 2). Additionally, performing the reaction in a hydrogen atmosphere produces solely the amine in full conversion. In that case, the resulting imine is consumed even more rapidly. The beneficial effect of water has been reported earlier for a related reaction; the metal-catalyzed reductive amination of ketones but no explanation was given.<sup>18</sup>

To direct the reaction towards the cyclic amide, several ketones were tested as hydrogen acceptors. Although the intramolecular condensation of the intermediate aldehyde with the amine is highly favoured, it appeared to be important to use a slightly bulky ketone to prevent any intermolecular competition. Still the ketone has to be reactive enough

to act as a hydrogen acceptor. The complete selectivity to the cyclic amide was achieved using propiophenone with 5-amino-1-pentanol as the substrate (Table 3). No condensation was observed in this case.

The amide formation appears to be fairly sensitive with regard to the substrate as well as to the hydrogen accepting ketone. *E.g.* propiophenone gave good results for 5-amino-1-pentanol but for 6-amino-1-hexanol the selectivity was not influenced much. The slightly less sterically demanding cyclohexanone (Table 3, entry 4) gave the highest selectivity to the cyclic amide. Variations such as the addition of molecular sieves or other (less) bulky ketones were applied but did not result in better selectivities.<sup>19</sup> In most of the cases, only the cyclic amine was observed. Lowering the reaction temperature resulted in intermolecular condensation reactions and no cyclic products were observed.

In addition, two other excellent catalytic systems used in the direct amination of secondary alcohols were employed, in order to find if these could be steered as well. The  $\text{RuHCl}(\text{CO})(\text{PPh}_3)_3/\text{Xantphos}$ <sup>7b</sup> system ('A') produced only the cyclic amine, though with a high conversion (100%) and yield (94%), whereas the recently published  $\text{Ru}_3(\text{CO})_{12}/\text{acridine diphosphine}$ <sup>20</sup> ('B') only gave around 50% conversion yet with a high amine selectivity (Scheme 5). However, for both catalytic systems, a ketone additive did not result in any lactam formation. This emphasizes the uniqueness of the  $\text{Ru}_3(\text{CO})_{12}/\text{CataCXium}^{\text{®}}$  PCy combination.

**Table 3** An overview of the results of the  $\alpha,\omega$ -amino-alcohols cyclization with additives<sup>a</sup>

Amino-alcohol	Additive <sup>b</sup>	Conversion <sup>c</sup> (%)	Amine selectivity <sup>c</sup> (%)	Amide selectivity <sup>c</sup> (%)	Other (%)
5-Amino-1-pentanol	Water	100	100	0	0
5-Amino-1-pentanol	Propiophenone	100	0	100	0
6-Amino-1-pentanol	Water	78.5	81	19	0
6-Amino-1-pentanol	Cyclohexanone	100	15	71.3	13.7 <sup>d</sup>
4-Amino-1-butanol	Water	100	61.3	0	38.7 <sup>e</sup>
4-Amino-1-butanol	Propiophenone	91.6	38.3	61.7 <sup>f</sup>	0
3-Amino-1-propanol	Water	18.6	68	0	30 <sup>e</sup>
3-Amino-1-propanol	Propiophenone	100	0	0	100 <sup>e</sup>

<sup>a</sup> 1 mmol substrate, 0.5 mol%  $\text{Ru}_3(\text{CO})_{12}$ , 3 mol% CataCXium<sup>®</sup> PCy (Ru:P = 1:2), 0.6 mL cyclohexane, 140 °C, 21 h.

<sup>b</sup> 10 mmol for  $\text{H}_2\text{O}$ , 2 mmol for ketone.

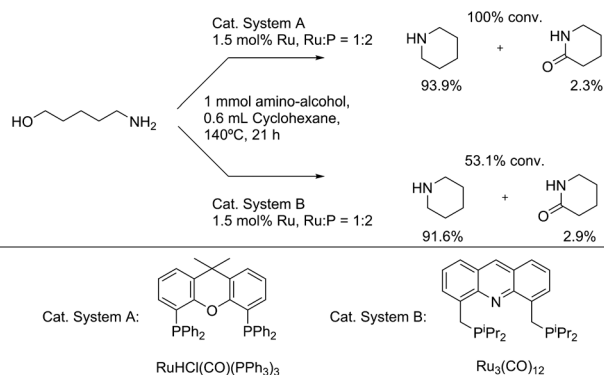
<sup>c</sup> Conversions and selectivities determined by GC, based on amino-alcohol consumption and amine/amide production.

<sup>d</sup> Condensation products.

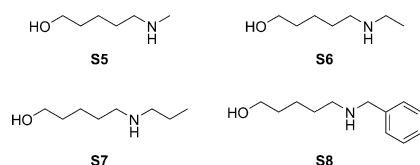
<sup>e</sup> Most likely polymers or oligomers.

<sup>f</sup> Totals of the hemi-aminal and amide.

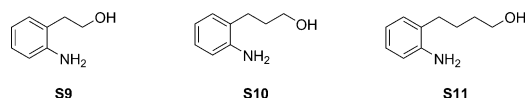




**Scheme 5** Amination catalysts in the amino-alcohol cyclization.



**Scheme 6** The cyclization pathway of secondary amino-alcohols involving enamine formation.



**Fig. 5** 2-(*n*-Alkanol) anilines used in the amino-alcohol cyclization.

**Fig. 4** Secondary amino-alcohols tested in the cyclization reactions.

The scope of this transformation was further explored towards the cyclization of secondary amino-alcohols (Fig 4).

Table 4 shows the results of the cyclization of substrates S5–S8. However, in this case no amides were formed. Only substrate S5 gave a small amount of amide. In all other cases, the cyclic amine was produced with a full selectivity. The additions of several ketones did not affect the selectivity at all.

The secondary imine, formed as an intermediate, would be present as an unstable zwitterionic iminium ion, which could not be observed. This would suggest that from the hemi-aminal, the amide is formed more easily. Though imine formation can occur, rapid isomerization to the enamine

would be more likely, as this is much more stable compared to a zwitterionic species (Scheme 6).

An important class of molecules are the benz-annulated *N*-heterocycles. Aniline-derived amino-alcohols were synthesized with different *n*-alkanol groups (Fig 5).

The lower conversions for these substrates might be due to the lower nucleophilicity of aniline. However, a high selectivity for the cyclic amines was observed, as was already seen for the  $\alpha,\omega$ -amino-alcohols and the *N*-substituted amino-alcohols.

A recent publication by Andersson *et al.* showed the efficient Ir-catalyzed cyclization of 2-(3-propanol)aniline and 2-(2-ethanol)aniline.<sup>21</sup> They successfully synthesized indoles and tetrahydroquinolines in high yields. Another recent report by Cho *et al.* described a Ru-catalyzed synthesis of quinoline from aniline and tripropanolamine.<sup>22</sup> Employing our new procedure, indoline can be produced in a high yield. Unfortunately no selectivity could be induced here to steer the reaction to the corresponding lactam. The amine was the only product although employing a propyl spacer resulted in the aromatization of the resulting amine product (Table 5). This is not surprising as this six-membered ring only needs to lose hydrogen from the imine to form the aromatic product (Scheme 7). Using propiophenone or cyclohexanone as the H-acceptor, the quinolone formation could be improved.

**Table 4** *N*-Substituted amino-alcohol cyclization catalyzed by  $\text{Ru}_3(\text{CO})_{12}$  and CataCXium® PCy<sup>a</sup>

Amino-alcohol	Conversion <sup>b</sup> (%)	Amine selectivity <sup>b</sup> (%)	Amide selectivity <sup>b</sup> (%)	Other (%)
S5 <sup>d</sup>	100	100	0	0
S5 <sup>e</sup>	96.1	43.3	29.4	23.4 <sup>c</sup>
S5	100	58.1	0	41.9 <sup>c</sup>
S6 <sup>d</sup>	100	95	5	0
S6 <sup>e</sup>	100	100	0	0
S6	100	100	0	0
S7 <sup>d</sup>	70	100	0	0
S7 <sup>e</sup>	88.3	100	0	0
S7	100	100	0	0
S8	71.9	100	0	0

<sup>a</sup> 1 mmol substrate, 10 mmol H<sub>2</sub>O, 0.5 mol%  $\text{Ru}_3(\text{CO})_{12}$ , 3 mol% CataCXium® PCy (Ru:P = 1:2), 0.6 mL cyclohexane, 140 °C, 21 h.

<sup>b</sup> Conversion determined by GC, based on the consumption of amino-alcohol and amine/amide production.

<sup>c</sup> Hemi-aminal.

<sup>d</sup> 10 mmol H<sub>2</sub>O added.

<sup>e</sup> 2 mmol propiophenone added.

## Conclusions

A simple Ru catalyst system derived from  $\text{Ru}_3(\text{CO})_{12}$  and CataCXium® PCy was employed in the efficient cyclization of amino-alcohols. By the addition of water or a ketone as the hydrogen acceptor, the reaction could be steered to either cyclic amines or cyclic amides, respectively, giving moderate to high yields and selectivities. To the best of our knowledge, the selectivities are the highest reported for  $\alpha,\omega$ -amino-alcohols. The cyclizations of *N*-substituted amino-alcohols and 2-(*n*-alkanol) anilines are very promising for the synthesis of *N*-heterocyclic amines and quinoline derivatives. This route enables various transformations in a single step, which





Table 5 An overview of the results with 2-(*n*-alkanol) anilines<sup>a</sup>

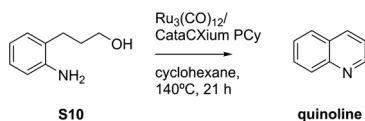
Amino-alcohol	Additive <sup>b</sup>	Conversion (%) <sup>c</sup>	Amine selectivity (%) <sup>c</sup>	Amide selectivity (%) <sup>c</sup>	Other (%)
S9	None	50.4	100	0	0
S9	Water	36.4	100	0	0
S9	Propiophenone	71.9	100	0	0
S9	Cyclohexanone	100	97.9	2.1	0
S10	Propiophenone	77.9	19.1	0	58.8 <sup>d</sup>
S10	Water	65.9	47.0	0	18.9 <sup>d</sup>
S10	Cyclohexanone	100	21.2	0	78.8 <sup>d</sup>
S11	Water	18.8	100	0	0
S11	Propiophenone	14.7	14.7	0	0

<sup>a</sup> 1 mmol substrate, 0.5 mol% Ru<sub>3</sub>(CO)<sub>12</sub>, 3 mol% CataCXium<sup>®</sup> PCy (Ru:P = 1:2), 0.6 mL cyclohexane, 140 °C, 21 h.

<sup>b</sup> 10 mmol for H<sub>2</sub>O, 2 mmol for ketone.

<sup>c</sup> Conversions and selectivities determined by GC, based on amino-alcohol consumption and amine/amide production.

<sup>d</sup> Quinoline.



Scheme 7 The aromatization to quinoline, starting from 2-(3-hydroxypropyl) aniline.

otherwise would require multiple steps and the use of activating and protecting groups.

## Experimental section

Chemicals and were purchased from Sigma-Aldrich and Acros, Ru<sub>3</sub>(CO)<sub>12</sub> was purchased from Strem and all chemicals were used as received. Substrates S5–S8 were synthesized according to a literature procedure.<sup>23</sup> The 2-(*n*-alkanol) anilines S9–S11 were synthesized according a literature procedure.<sup>24</sup> The synthesis and catalysis reactions were performed under an inert Ar atmosphere using standard Schlenk techniques. The product distribution and yield analyses were performed on a Shimadzu GC-17 A instrument with an Ultra 2 column (25 m, 0.2 mm id). GC-MS analyses were conducted on a Shimadzu GCMS-QP2010 SE with a DB-1 MS column (10 m, 0.1 mm id). Amino-alcohol cyclizations were performed in a 10 mL stainless steel autoclave. The reaction profiles were recorded using a homemade 75 mL stainless steel autoclave equipped with a manometer and a sampling unit for 50 μL samples. Samples were subjected directly to GC without further workup.

The procedures for the cyclization of amino-alcohols: using RuHCl(CO)(PPh<sub>3</sub>)<sub>3</sub>/Xantphos:  $\alpha,\omega$ -amino-alcohol (1 mmol) was weighed into a 10 mL stainless steel autoclave applying a blanket of Ar. RuHCl(CO)(PPh<sub>3</sub>)<sub>3</sub> (1.5 mol%, 0.015 mmol, 14.3 mg) and Xantphos (1.5 mol%, 0.015 mmol, 8.7 mg) were added followed by cyclohexane (0.6 mL). For the reactions using water as an additive, degassed H<sub>2</sub>O (10 mmol) was added and the autoclave was closed tightly and heated in an oil bath for the appropriate time. The reactions using ketone as the additive were performed using dried, degassed ketone (2 mmol). The reaction mixture was subjected to GC and GC-MS analyses.

Using Ru<sub>3</sub>(CO)<sub>12</sub>/acridine diphosphine:  $\alpha,\omega$ -amino-alcohol (1 mmol) was weighed into a 10 mL stainless steel autoclave applying a blanket of Ar. Ru<sub>3</sub>(CO)<sub>12</sub> (0.5 mol%, 0.005 mmol, 3.2 mg) and acridine diphosphine (1.5 mol%, 0.015 mmol, 6.6 mg) were added followed by cyclohexane (0.6 mL). For the reactions using water as an additive, degassed H<sub>2</sub>O (10 mmol) was added and the autoclave was closed tightly and heated in an oil bath for the appropriate time. Reactions using ketone as the additive were performed using dried, degassed ketone (2 mmol). The reaction mixture was subjected to GC and GC-MS analyses.

Using Ru<sub>3</sub>(CO)<sub>12</sub>/CataCXium<sup>®</sup> PCy:  $\alpha,\omega$ -amino-alcohol (1 mmol) was weighed into a 10 mL stainless steel autoclave applying a blanket of Ar. Ru<sub>3</sub>(CO)<sub>12</sub> (0.5 mol%, 0.005 mmol, 3.2 mg) and CataCXium<sup>®</sup> PCy (3 mol%, 0.03 mmol, 10.2 mg) were added followed by cyclohexane (0.6 mL). For the reactions using water as an additive, degassed H<sub>2</sub>O (10 mmol) was added and the autoclave was closed tightly and heated in an oil bath for the appropriate time. The reactions using ketone as the additive were performed using dried, degassed ketone (2 mmol). The reaction mixture was subjected directly to GC and GC-MS analyses without further workup.

Fig 1 and 2 were produced *via* a modified procedure: in an Ar-purged Schlenk tube, Ru<sub>3</sub>(CO)<sub>12</sub> (0.5 mol%, 0.075 mmol, 48 mg) and CataCXium<sup>®</sup> PCy (3 mol%, 0.45 mmol, 153 mg) was dissolved in 9 mL cyclohexane. To this  $\alpha,\omega$ -amino-alcohol was added. The mixture was then transferred to a 75 mL stainless steel autoclave purged with Ar. The autoclave was closed tightly and heated to 140 °C using a heating mantle. Samples were taken at  $t = 0.5, 1, 2, 3.75, 5.5, 7.5, 10, 21$  and 24 h for Fig. 1 and at  $t = 0.5, 1, 2, 3.75, 5, 7, 12$  and 24 h for Fig. 2.

## Acknowledgements

We would like to thank Ton Staring for his technical assistance. This research has been funded by the Netherlands Ministry of Economic Affairs and the Netherlands Ministry of Education, Culture, and Sciences within the framework of the CatchBio program.



## Notes and references

- C. Gunanathan and D. Milstein, *Science*, 2007, **317**, 790–792.
- S. C. Ghosh, S. Muthaiah, Y. Zhang, X. Xu and S. H. Hong, *Adv. Synth. Catal.*, 2009, **351**, 2643–2649.
- T. Zweifel, J.-V. Naubron and H. Grützmacher, *Angew. Chem., Int. Ed.*, 2009, **48**, 559–563.
- (a) R. P. Tangallapally, R. Yendapally, R. E. Lee, A. J. M. Lenaerts and R. E. Lee, *J. Med. Chem.*, 2005, **48**, 8261–8269; (b) E. Busto, V. Gotor-Fernández and V. Gotor, *Chem. Rev.*, 2011, **111**, 3998–4035.
- C. Gunanathan and D. Milstein, *Angew. Chem., Int. Ed.*, 2008, **47**, 8661.
- D. Pingen, C. Müller and D. Vogt, *Angew. Chem., Int. Ed.*, 2010, **49**, 8130–8133.
- (a) S. Imm, S. Bähn, L. Neubert, H. Neumann and M. Beller, *Angew. Chem., Int. Ed.*, 2010, **49**, 8126–8129; (b) S. Imm, S. Bähn, M. Zhang, L. Neubert, H. Neumann, F. Klasovsky, J. Pfeffer, T. Haas and M. Beller, *Angew. Chem., Int. Ed.*, 2011, **50**, 7599–7603.
- G. F. Woods and H. Sanders, *J. Am. Chem. Soc.*, 1946, **68**, 2111–2112.
- S.-I. Murahashi, K. Kondo and T. Hakata, *Tetrahedron Lett.*, 1982, **23**, 229–232.
- K. Felföldi, M. S. Klyavlin and M. Bartók, *J. Organomet. Chem.*, 1989, **362**, 193–195.
- T. Naota and S.-I. Murahashi, *Synlett*, 1991, **1991**, 693–694.
- R.A.T.M. Abbenhuis, J. Boersma and G. van Koten, *J. Org. Chem.*, 1998, **63**, 4282–4290.
- J. H. Dam, G. Osztrovszky, L. U. Nordstrøm and R. Madsen, *Chem.–Eur. J.*, 2010, **16**, 6820–6827.
- L. U. Nordstrom, H. Vogt and R. Madsen, *J. Am. Chem. Soc.*, 2008, **130**, 17672–17673.
- A. Nova, D. Balcells, N. D. Schley, G. E. Dobereiner, R. H. Crabtree and O. Eisenstein, *Organometallics*, 2010, **29**, 6548–6558.
- K.-I. Fujita, Y. Takahashi, M. Owaki, K. Yamamoto and R. Yamaguchi, *Org. Lett.*, 2004, **6**, 2785–2788.
- S. Muthaiah, S. C. Ghosh, J.-E. Jee, C. Chen, J. Zhang and S. H. Hong, *J. Org. Chem.*, 2010, **75**, 3002–3006.
- (a) R. Kadyrov and T. Riermeier, *Angew. Chem., Int. Ed.*, 2003, **42**, 5472–5474; (b) T. E. Müller, K.C. Hultsch, M. Yus, F. Faubelo and M. Tada, *Chem. Rev.*, 2008, **108**, 3795–3892; (c) S. Sato, T. Sakamoto, E. Miyazawa and Y. Kikugawa, *Tetrahedron*, 2004, **60**, 7899; (d) T. Gross, A. M. Seayad, M. Ahmed and M. Beller, *Org. Lett.*, 2002, **4**, 2055 (e) M. Kitamura, D. Lee, S. Hayashi, S. Tanaka and M. Yoshimura, *J. Org. Chem.*, 2002, **67**, 8685–8687.
- For the different conditions and additives applied, see the ESI†.
- D. Pingen and D. Vogt, *ChemCatChem*, 2013, **10.1002/cctc.201300407**.
- J.-Q. Li and P. G. Andersson, *Chem. Commun.*, 2013, **49**, 6131–6133.
- C. S. Cho, D. T. Kim, T.-J. Kim and S. C. Shim, *Bull. Korean Chem. Soc.*, 2003, **24**, 1026–1028.
- R. V. Hoffman and J. M. Salvador, *J. Chem. Soc., Perkin Trans. 1*, 1375–1380.
- N. T. Patil, H. Wu and Y. Yamamoto, *J. Org. Chem.*, 2007, **72**, 6577–6579.

