



# THE UNIVERSITY *of* EDINBURGH

## Edinburgh Research Explorer

### **Sex Determination in the Social Amoeba Dictyostelium discoideum**

**Citation for published version:**

Bloomfield, G, Skelton, J, Ivens, A, Tanaka, Y & Kay, RR 2010, 'Sex Determination in the Social Amoeba Dictyostelium discoideum' Science, vol. 330, no. 6010, pp. 1533-1536. DOI: 10.1126/science.1197423

**Digital Object Identifier (DOI):**

[10.1126/science.1197423](https://doi.org/10.1126/science.1197423)

**Link:**

[Link to publication record in Edinburgh Research Explorer](#)

**Document Version:**

Peer reviewed version

**Published In:**

Science

**Publisher Rights Statement:**

Free in PMC.

**General rights**

Copyright for the publications made accessible via the Edinburgh Research Explorer is retained by the author(s) and / or other copyright owners and it is a condition of accessing these publications that users recognise and abide by the legal requirements associated with these rights.

**Take down policy**

The University of Edinburgh has made every reasonable effort to ensure that Edinburgh Research Explorer content complies with UK legislation. If you believe that the public display of this file breaches copyright please contact [openaccess@ed.ac.uk](mailto:openaccess@ed.ac.uk) providing details, and we will remove access to the work immediately and investigate your claim.



Published in final edited form as:

*Science*. 2010 December 10; 330(6010): 1533–1536. doi:10.1126/science.1197423.

## Sex determination in the social amoeba *Dictyostelium discoideum*

Gareth Bloomfield<sup>1,2,\*</sup>, Jason Skelton<sup>2</sup>, Alasdair Ivens<sup>2</sup>, Yoshimasa Tanaka<sup>1,3</sup>, and Robert R. Kay<sup>1</sup>

<sup>1</sup>MRC Laboratory of Molecular Biology, Hills Road, Cambridge, CB2 0QH, UK

<sup>2</sup>Wellcome Trust Sanger Institute, Hinxton, CB10 1SA, UK

<sup>3</sup>Graduate School of Life and Environmental Sciences, University of Tsukuba, Tsukuba, Ibaraki 305-8572, Japan

### Abstract

The genetics of sex determination remains mysterious in many organisms including some that are otherwise well-studied. Here we report the discovery and analysis of the mating-type locus of the model organism *Dictyostelium discoideum*. Three forms of a single genetic locus specifies this species' three mating-types: two versions of the locus are entirely different in sequence, and the third resembles a composite of the other two. Single, unrelated genes are sufficient to determine two of the mating-types, while homologues of both these genes are required in the composite type. The key genes encode polypeptides that possess no recognisable similarity to established protein families. Sex determination in the social amoebae thus appears to use regulators unrelated to any currently known.

Most eukaryotes are sexual, but little is known in molecular detail about sex across most branches of the eukaryotic tree. One aspect, the genetic basis of sex determination, is well understood in several animal, fungal and plant lineages (1-5), but across the protozoan kingdoms we know little, and nothing in comparable detail. The social amoebae are members of the Amoebozoa, and have an unusual sexual cycle that leads to the formation of dormant, walled macrocysts (6) (Fig. 1 A and B). To produce a macrocyst, a pair of haploid amoebae of different sexes fuse (7) to form a diploid zygote, which then attracts surrounding haploid cells (8). These help to lay down external layers of cellulose around the developing mass of cells before being cannibalized by the zygote (9). After a period of dormancy the cyst germinates, releasing haploid progeny that arise most likely after meiosis and multiple mitoses (10). Population genetics of wild isolates indicate that mating and recombination are probably frequent in the wild (11).

The most-studied species of social amoeba, *Dictyostelium discoideum*, is notable for having three sexes (hereafter called mating-types I, II, and III; supporting online text, S1), as well as uncommon self-fertile homothallic strains (12-14). Each of the three sexes can pair with each of the other two, but not with itself, giving three possible classes of zygote: type-I/type-II, type-I/type-III, and type-II/type-III. Although several genes are known to be involved during the sexual cycle (15), the determinant of mating-type has proved elusive. Genetic analysis suggested that mating-type is stable, and determined by a single locus with two or

\*To whom correspondence should be addressed. garethb@mrc-lmb.cam.ac.uk Phone: +44 (0)1223 402020. Fax +44 (0)1223 412142 .

**Supporting Online Material** [www.sciencemag.org](http://www.sciencemag.org) Materials and Methods Supporting online text S1, S2, S3, S4, S5 Tables S1, S2, S3, S4, S5, S6 Figs. S1, S2, S3, S4, S5, S6

more alleles (10, 14, 16). We argued that it might be possible to identify this postulated locus by searching for genes which are present in any member of one mating-type but absent (or highly diverged) in any member of another. For this purpose we performed comparative genomic hybridizations using DNA microarrays composed of probes for around 8500 of the 10500 predicted genes in the sequenced type-I *D. discoideum* genome (17).

We analysed ten strains derived from independent wild isolates (table S1) using this microarray (18), and found a single candidate gene that follows the pattern expected of a sex-determining sequence: it is present in all type-I genomes but absent from all the type-II strains (Fig. 2, fig. S1, table S2). This open reading frame (ORF) is situated on chromosome 5 (see supporting online text S2), and is very short, encoding a 107 amino-acid polypeptide that contains no significant homology to previously studied proteins. No motifs or potential domains suggest a function, but it is relatively highly charged and so is most likely a soluble intracellular protein. We confirmed that the ORF is present in all the other type-I strains used in the microarray study (100% identical in amino acid sequence in all cases; table S3), and sequenced the entire locus from another type-I strain, WS205, to confirm that no other obvious coding sequences are present.

To test whether the gene is involved in the sexual cycle, we deleted it from our standard type-I strain (19). The resulting mutant, in contrast to its parent, is unable to form macrocysts when paired with a type-II strain (Fig. 3). When the coding sequence is reintroduced under the control of a constitutive promoter, mating competence is restored (Fig. 3D, table S4) showing that this gene, which we call *matA*, is necessary for correct type-I mating behaviour, and supporting the proposition that it is involved in sex determination.

The two genes flanking *matA* in the reference type-I sequence are present in all strains, and do not vary in amino-acid sequence between mating-types (fig. S2). We could therefore amplify the entire type-II version of the locus by polymerase chain reaction from the NC66.2 isolate. The type-II version is larger and contains three genes (Fig. 4A), one of which, *matB*, is homologous to *matA*, but considerably diverged at approximately 60% identity in amino-acid sequence (fig. S3, and see supporting online text S1). A second small gene, *matC*, encodes a 208 amino-acid hydrophilic polypeptide that again has no similarity to known proteins (fig. S4). The third gene, *matD*, is larger, spliced, and encodes a 799 amino-acid preprotein that contains a predicted signal peptide and potential GPI-anchor attachment site (fig. S5). No homology is shared between these three genes. All of the other type-II strains tested contain the same three genes with >98% sequence identity (table S4), and the complete type-II locus from the Japanese type-II isolate NYA64 was sequenced, again confirming that no additional coding sequences are present.

To prove that this locus is responsible for sex determination, we attempted to switch the mating-type of our type-I laboratory strain. The *matA* gene was first deleted and the resulting mutant then transformed with a construct bearing the entire type-II version of the locus. The resulting strain now behaves as type-II (see also supporting online text S3), forming macrocysts when paired with type-I cells but not with type-II (table S5). This reversal of mating orientation demonstrates that this locus is sufficient to specify mating-types -I and -II, and that we have identified the *Dictyostelium* mating-type locus.

Next we characterised the locus in the type-III strain WS2162. This version contains two genes homologous to *matC* and *matD* but divergent in sequence, and which we name *matS* and *matT* respectively (Fig. 4A, fig. S4, fig. S5). No sequence related to *matA* or *matB* is present. The same pattern is followed in another type-III isolate, WS112B (table S6). Each mating-type thus possesses a different version of the mating-type locus, and there is no

overlap between the type-I and type-III versions. Strikingly, the type-II version resembles a composite of the other two, containing homologues of the genes from the type-I and type-III versions. Two homothallic isolates resemble type-III, containing genes related to *matS* and *matT* but no *matA/matB* homologue (table S6, see also supporting online text S4).

Since mating-type -I is determined by a single gene, we next asked whether any of the genes at the type-II and type-III versions of the locus could act as master regulators of sex determination, with others perhaps having subsidiary roles. To do this, we expressed individual genes, either alone or in combination, in the *matA* null strain, which is unable to mate with any strain. The type-II locus was analysed in most detail. Expressing *matB* alone from a constitutive promoter is sufficient to produce a strain to mate with a type-III strain, but not with types-I and -II (Fig. 3D, table S5). Thus the homologous *matA* and *matB* genes appear to have similar but not identical functions: the former specifies mating competence towards type-II and type-III while the latter is only effective towards type-III, and *matB* only partially accounts for the type-II phenotype.

Expressing *matC* alone in the same null background allows mating with type-I cells but not type-III nor type-II (Fig. 3D, table S5). We obtained the same result when we replaced the knocked-out version of the *matA* locus with a truncation of the NC66.2 *mat* locus containing only *matC* and its native regulatory sequences; again this strain, which now contains only *matC* in place at the mating locus on chromosome 5, mates efficiently with type-I cells but not at all with type-III nor type-II (Fig. 3C, table S5). When the knocked-out version is replaced with the genomic region bearing both *matB* and *matC*, under the control of their own promoters, the resulting strain can form macrocysts with both types-I and -III (table S5). Similarly, overexpression of both *matB* and *matC* in the same strain recapitulates normal type-II behaviour as adjudged by this assay (Fig. 3D, table S5). Importantly, these strains are not self-fertile (table S5). Therefore two unrelated *mat* genes together specify the type-II mating-type.

The final gene contained in the type-II version of the locus, *matD*, is not required for mating-type determination. When expressed alone in the mating null cells from a constitutive promoter it does not allow mating with any of the mating-types; and it does not affect the qualitative behaviour of *matB* or *matC* when expressed in combination with them, though there is some evidence of quantitative effects. Yields of macrocysts are higher when *matD* is present in some crosses (table S5); this is consistent with a possible role in promoting gamete fusion in these cases, an idea supported by distant homology to a known protein involved in this process (see below).

Turning to the type-III version, the presence of a *matC* homologue suggested that this gene, *matS*, might specify this third mating-type. As expected, expressing *matS* in the *matA* null background gives a strain which mates with type-I and type-II, but not with type-III (Fig. 3D, table S5). Furthermore, crosses between strains bearing just the master control genes give the expected results: null cells expressing just *matS* can mate with cells expressing just *matB* but not with cells expressing just *matC* (table S5). Finally, cells separately expressing *matB* and *matC* do not mate with each other (table S5). We have not analysed *matT* separately, but like *matD* it does not appear to be necessary for sex determination.

These results suggest a simple underlying picture: type-I and type-III mating behaviour can be specified by a single gene in each case: *matA* specifies type-I and *matS* specifies type-III. Type-II is a composite in which homologues of *matA* and *matS* (*matB* and *matC* respectively) allow it to mate with the other two mating-types but, for reasons that remain unclear, not with itself (Fig. 4B).

The molecular function of these genes remains to be addressed. No clear homologues are present in species outside of the dictyostelids, but *Dictyostelium purpureum* possesses two adjacent genes homologous to *matS* and *matT* (fig. S4, fig. S5). A clear *matD/matT* homologue is also evident in the more distantly related dictyostelid *Acytostelium subglobosum* (fig. S5). Adjacent to this gene is a small ORF very weakly similar to *matC/matS*, a possible *matS* orthologue in this species (fig. S6). MatD is distantly related to the Hap2-GCS1 family of gamete fusion proteins (20), though another *Dictyostelium discoideum* gene, *hapA*, encodes a protein much more closely related to the canonical Hap2 group, and is enriched in cells competent for mating (21).

The organisation of the *Dictyostelium* mating-type locus does not closely resemble previously studied sex-determining regions (supporting online text S5), although like them the *mat* locus must ultimately control a transcriptional cascade (21). Whether the key genes directly regulate transcription or through downstream targets remains to be determined. One further role could be in controlling mitochondrial inheritance, which is uniparental in related Amoebozoans (22, 23).

We have identified the sex-determining locus from *Dictyostelium discoideum*, a model organism and the best-studied member of the Amoebozoa. The master regulators of sex-determination at this locus encode homologues of two small, apparently soluble proteins, which are unrelated to previously studied proteins. The genetic logic of the system allows one to speculate that one sex, mating-type -II, may have arisen after a fusion of the versions of the locus of the other two sexes. Understanding the mating-type locus may help to overcome long-standing difficulties in making use of sexual genetics in *Dictyostelium* (24).

One sentence summary: Four genes contained in three versions of a single genetic locus determine the three sexes of the model organism *Dictyostelium discoideum*.

## Supplementary Material

Refer to Web version on PubMed Central for supplementary material.

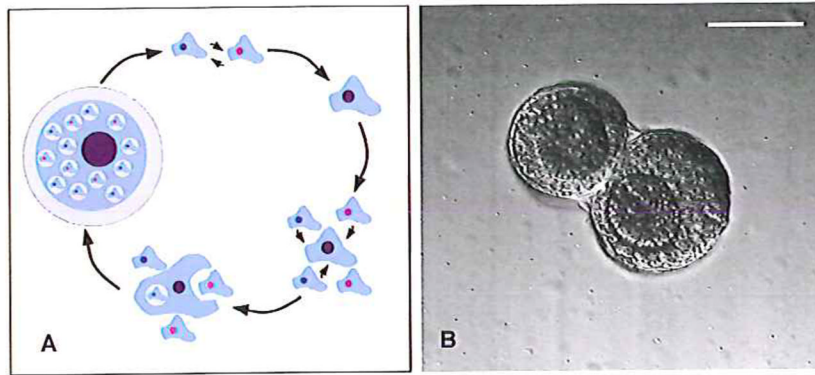
## Acknowledgments

This work was supported by Wellcome Trust grant number 06724 and core funding from the MRC. We would like to thank the Dicty Stock Center (<http://www.dictybase.org/StockCenter/StockCenter.html>), David Francis, Hiromitsu Hagiwara, and Pauline Schaap for providing strains; Theresa Feltwell, Nefeli Nikolaidou-Katsaridou, and Kay Jagels for technical assistance; Maria Fookes, Karen Brooks, Catherine Pears, Nick Barry and the members and associate members of the *Dictyostelium* group at the LMB for valuable advice and discussions. A.I. is now at Fios Genomics, ETTC, King's Buildings, Edinburgh, EH9 3JL, UK. We are grateful to the US Department of Energy Joint Genome Institute (<http://www.jgi.doe.gov/>) and co-workers, and to the *Actyostelium* Genome Consortium for making the *Dictyostelium purpureum* and *Acytostelium subglobosum* genome data available before publication. Microarray data are available under the accession E-TABM-394 and the array design under A-SGRP-3 at <http://www.ebi.ac.uk/arrayexpress/> and DNA sequences have been deposited in EMBL-Bank under the accessions FN543120 – FN543124, FN994780, FR666792, and FR666793.

## References

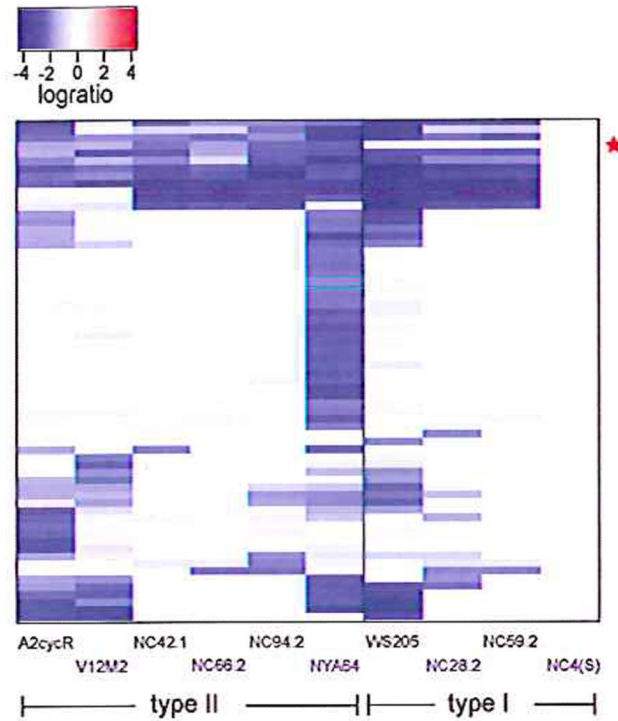
1. Marín I, Baker BS. Science. 1998; 281:1990–1994. [PubMed: 9748152]
2. Smith CA, Roeszler KN, Ohnesorg T, Cummins DM, Farlie PG, et al. Nature. 2009; 461:267–271. [PubMed: 19710650]
3. Lee SC, Ni M, Li W, Shertz C, Heitman J. Microbiol. Mol. Biol. Rev. 2010; 74:298–340. [PubMed: 20508251]
4. Tanurdzic M, Banks JA. Plant Cell. 2004; 16:S61–71. [PubMed: 15084718]

5. Martin A, Troadec C, Boualem A, Rajab M, Fernandez R, et al. *Nature*. 2009; 461:1135–1138. [PubMed: 19847267]
6. Blaskovics JC, Raper KB. *Biol. Bull.* 1957; 113:58–88.
7. Saga Y, Okada H, Yanagisawa K. *J. Cell Sci.* 1983; 60:157–168. [PubMed: 6874727]
8. O'Day D. *Can. J. Microbiol.* 1979; 25:1416–1426. [PubMed: 231480]
9. Filosa MF, Dengler RE. *Dev. Biol.* 1972; 29:1–16. [PubMed: 4342276]
10. Wallace MA, Raper KB. *J. Gen. Microbiol.* 1979; 113:327–337. [PubMed: 292755]
11. Flowers JM, Li SI, Stathos A, Saxer G, Ostrowski EA, et al. *PLoS Genet.* 2010; 6:e1001013. [PubMed: 20617172]
12. Hurst LD. *Proc. R. Soc. London Ser. B.* 1996; 263:415–422.
13. Erdos GW, Raper KB, Vogen LK. *Proc. Natl. Acad. Sci. U.S.A.* 1973; 70:1828–1830. [PubMed: 16592095]
14. Robson GE, Williams KL. *Curr. Genet.* 1980; 1:229–232.
15. Urushihara H, Muramoto T. *Eur. J. Cell Biol.* 2006; 85:961–968. [PubMed: 16815590]
16. Robson GE, Williams KL. *Genetics.* 1979; 93:861–875. [PubMed: 17248984]
17. Eichinger L, Pachebat JA, Glockner G, Rajandream M, Sugcang R, et al. *Nature*. 2005; 435:43–57. [PubMed: 15875012]
18. Bloomfield G, Tanaka Y, Skelton J, Ivens A, Kay RR. *Genome Biol.* 2008; 9:R75. [PubMed: 18430225]
19. Materials and methods are available as supporting material on *Science* Online.
20. Wong JL, Johnson MA. *Trends Cell Biol.* 2010; 20:134–141. [PubMed: 20080406]
21. Muramoto T, Suzuki K, Shimizu H, Kohara Y, Kohriki E, et al. *Mech. Dev.* 2003; 120:965–975. [PubMed: 12963116]
22. Kawano S, Anderson RW, Nanba T, Kuroiwa T. *J. Gen. Microbiol.* 1987; 133:3175–3182. [PubMed: 2833563]
23. Mirfakhrai M, Tanaka Y, Yanagisawa K. *Genetics.* 1990; 124:607–613. [PubMed: 1968872]
24. Raper, KB. *The Dictyostelids*. Princeton Univ. Press; Princeton: 1984. chap. 9.



**Figure 1. The sexual cycle of *Dictyostelium discoideum***

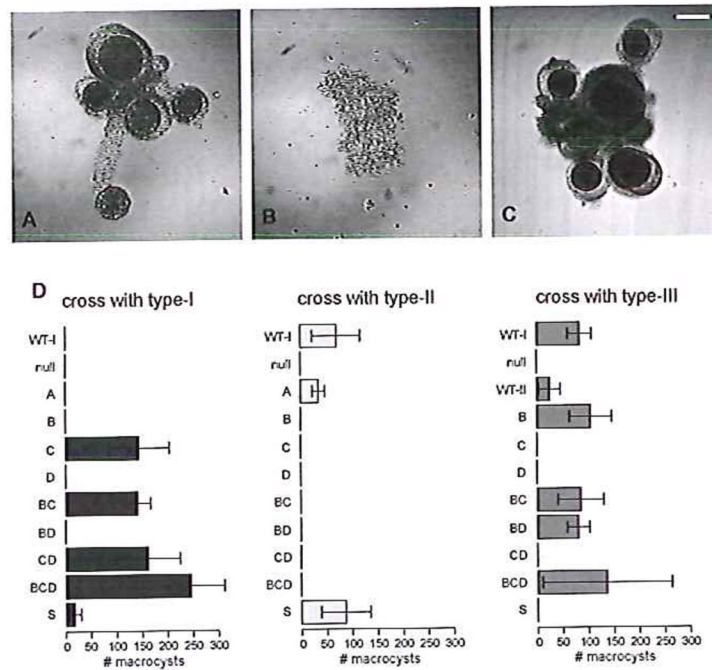
**A:** Amoebae of different sexes (top) first fuse, and several hours later their two nuclei also fuse, resulting in a diploid zygote (top right). This then secretes cAMP to attract surrounding haploid cells (bottom right), which are ingested by the zygote (bottom); eventually a dormant macrocyst is formed, retaining part-digested haploids within vacuoles (left). Ultimately the macrocyst germinates, releasing tens or hundreds of progeny, all descending from the zygote. **B:** Early macrocysts (precysts) of strain AC4, formed in shaken suspension approximately 24 hours after removal of food bacteria. Here, two developing macrocysts are contained within the same outer wall. In each cyst inner walls envelop hundreds of haploid amoebae and the zygote, which is visible here as the darker cell mass at the centre of each cyst, and which slowly eats its way out to the limiting wall. Within the zygotes the structures of ingested amoebae are still clear. Scale bar = 50  $\mu\text{m}$ .



**Figure 2. Identification of a candidate mating-type locus**

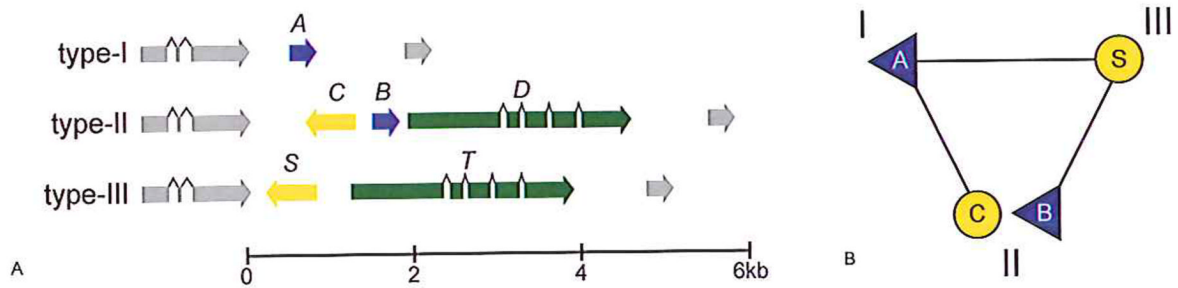
Our search assumed that the mating-type locus would differ substantially in sequence between mating-types, so using a microarray designed from type-I sequence we sought genes present in all examples of this mating-type and absent (or highly diverged) in all examples of type-II. Out of more than 8500 genes covered on the array only one, *matA*, (alongside the red star) behaved in this way when ten independent wild isolates were compared with our laboratory strain Ax2 in DNA to DNA comparisons. The heatmap shows only the set of genes giving a logratio below -2 in at least one of the wild strains compared to Ax2 (full data are presented in table S2). Each row in the plot represents a gene; each column a strain. Blocks are coloured according to  $\log_2$ ratio, from blue (negative – decreased copy number or sequence divergence in the test strain) through white (zero – no difference) to red (positive - increased copy number in the test strain). Several other sequences apart from *matA* are absent or diverged in different isolates, but none of these correlates with mating-type; it should be noted that NC4 is the ultimate parent of Ax2, accounting for the similarity between them.





### Figure 3. Re-engineering the mating behaviour of a type-I strain

The type-I strain Ax2, which can mate with type-II strain V12M2 (A), was first modified by the deletion of *matA*. The resultant strain is unable to mate with V12M2 (B) or any other strain. The introduction of *matC* with its own regulatory sequences into this null mutant gives a strain that is able to mate with its ultimate parent Ax2 (C). Structures were imaged seven days after mixing using differential interference contrast microscopy. D: Macrocysts formed in various crosses were counted eight days after mixture of strains. Eleven strains were crossed with a type-I strain, Ax2 (left), and with a type-II strain, V12M2 (middle): 'WT-I' is the parental Ax2 strain, 'null' is the *matA* deletion strain in this background. The next nine strains are the null plus one or more *mat* gene controlled by a constitutive promoter; each is designated by the gene's letter. These strains, apart from the *matA*-expressing strain, and also the type-II strain V12M2 ('WT-II'), were also crossed with the type-III strain WS2162 (right). The mean number of macrocysts plus and minus the standard error from three independent crosses are plotted.



**Figure 4. The structure and logic of the *D. discoideum* *mat* locus**

**A.** Type-I strains are characterised by a single protein-coding gene, *matA* (coloured blue, marked above with 'A'; dictyBase ID DDB\_G0289165), which is homologous to *matB* (also coloured blue, marked 'B'), one of the three genes present in the type-II version of the locus. The two other genes making up the type-II locus, *matC* (yellow, marked 'C') and *matD* (green, marked 'D'), are homologous to the two genes that occupy the type-III version, *matS* and *matT* (coloured yellow and green according to homology, marked S and T; gene nomenclature is treated further in the supplementary discussion). The locus lies on chromosome 5 between the genes DDB\_G0289171 and DDB\_G0289163, which do not vary according to mating-type and are shown here coloured grey. **B.** Mating compatibility requires the presence of a *matA*-class gene (blue triangles) and a *matS*-class gene (yellow circles) in the two gametes. Type-II cells contain a gene of each class, allowing mating with both types -I and -III. The nature of the interactions between genes remains unknown, as does the molecular explanation of how the *matB* and *matC* pair are incompatible.