



THE UNIVERSITY *of* EDINBURGH

Edinburgh Research Explorer

Simultaneously reconstructing viral cross-species transmission history and identifying the underlying constraints

Citation for published version:

Faria, NR, Suchard, MA, Rambaut, A, Streicker, DG & Lemey, P 2013, 'Simultaneously reconstructing viral cross-species transmission history and identifying the underlying constraints' *Philosophical Transactions of the Royal Society B: Biological Sciences*, vol 368, no. 1614, 20120196, pp. -, 10.1098/rstb.2012.0196

Digital Object Identifier (DOI):

[10.1098/rstb.2012.0196](https://doi.org/10.1098/rstb.2012.0196)

Link:

[Link to publication record in Edinburgh Research Explorer](#)

Document Version:

Author final version (often known as postprint)

Published In:

Philosophical Transactions of the Royal Society B: Biological Sciences

Publisher Rights Statement:

Free in PMC.

General rights

Copyright for the publications made accessible via the Edinburgh Research Explorer is retained by the author(s) and / or other copyright owners and it is a condition of accessing these publications that users recognise and abide by the legal requirements associated with these rights.

Take down policy

The University of Edinburgh has made every reasonable effort to ensure that Edinburgh Research Explorer content complies with UK legislation. If you believe that the public display of this file breaches copyright please contact openaccess@ed.ac.uk providing details, and we will remove access to the work immediately and investigate your claim.



Published in final edited form as:

Philos Trans R Soc Lond B Biol Sci. 2013 March 19; 368(1614): 20120196. doi:10.1098/rstb.2012.0196.

Simultaneously reconstructing viral cross-species transmission history and identifying the underlying constraints

Nuno Rodrigues Faria^{*,a}, Marc A Suchard^{b,c,d}, Andrew Rambaut^{e,f}, Daniel G Streicker^g, and Philippe Lemey^a

^aDepartment of Microbiology and Immunology, Rega Institute, KU Leuven, Leuven, Belgium

^bDepartment of Biomathematics, David Geffen School of Medicine at UCLA, University of California, Los Angeles, USA

^cDepartment of Human Genetics, David Geffen School of Medicine at UCLA, University of California, Los Angeles, USA

^dDepartment of Biostatistics, UCLA School of Public Health, University of California, Los Angeles, USA

^eInstitute of Evolutionary Biology, University of Edinburgh, Edinburgh, UK

^fFogarty International Center, National Institutes of Health, Bethesda, MD, USA

^gOdum School of Ecology, University of Georgia, Athens, USA

Abstract

The factors that determine the origin and fate of cross-species transmission events remain unclear for the majority of human pathogens despite being central for the development of predictive models and assessing the efficacy of prevention strategies. Here, we describe a flexible Bayesian statistical framework to reconstruct virus transmission between different host species based on viral gene sequences while simultaneously testing and estimating the contribution of several potential predictors of cross-species transmission. Specifically, we employ a generalized linear model extension of phylogenetic diffusion to perform Bayesian model averaging over candidate predictors. By further extending this model with branch partitioning, we allow for distinct host transition processes on external and internal branches, thus discriminating between recent cross-species transmissions, many of which are likely to result in dead-end infections, and host shifts that reflect successful onwards transmission in the new host species. Our approach corroborates genetic distance between hosts as a key determinant of both host shifts and cross-species transmissions of rabies virus in North American bats. Furthermore, our results indicate that geographical range overlap is a modest predictor for cross-species transmission but not for host shifts. Although our evolutionary framework focused on the multi-host reservoir dynamics of bat rabies virus, it is applicable to other pathogens and to other discrete state transition processes.

*Fax: +32 16347900; Tel: +32 16347908; nuno.faria@rega.kuleuven.be.

†Electronic Supplementary Information (ESI) available: XML file using branch partitioning GLM.

‡Abbreviations: CST: Cross-Species Transmission, GLM: Generalized Linear Model, CTMC: Continuous-Time Markov Chain, BSSVS: Bayesian Stochastic Search Variable Selection, BP: branch partitioning, BF: Bayes Factor, GTR: General Time Reversible, BCI: Bayesian Credible Interval, cES: Conditional Effective Size

1 INTRODUCTION

Many devastating infectious diseases have emerged from zoonotic viruses that have successfully jumped the ecological and evolutionary species barriers to generate sustained epidemics¹. Jumps of viruses from their natural reservoirs can, however, have a range of distinct outcomes. Cross-species transmissions (CSTs) may trigger major epidemics such as those caused by HIV/AIDS, influenza type A virus and SARS coronavirus. Conversely, infections caused by CST can result in little or no onwards transmission in the recipient species, such as in Ebola virus and rabies virus infection in humans². Although an understanding of the factors underlying the initial stages of viral emergence is central to public health strategies^{3,4}, these remain poorly understood for most important human pathogens.

As a multi-host pathogen that persists in independent cycles in numerous mammalian reservoir species^{5,6}, rabies provides an ideal candidate model to investigate cross-species transmission dynamics at its earliest phases. Rabies is also one of the best studied zoonotic pathogens⁷⁻⁹, and its epidemic and evolutionary dynamics have frequently been explored using viral genetic data¹⁰⁻¹². In North American bat species, rabies establishes different host-associated lineages through a process of frequent CST, mostly resulting in dead-end infections (CST spillover), but occasionally leading to successful and preferential transmission in the new host species (host shifts)¹³. A key question that naturally arises from this observation concerns the determinants underlying different stages of the cross-species transmission dynamics: what factors govern the process of CST and host shifts of the virus? This has recently been addressed by a population genetic study of a comprehensive set of rabies virus gene sequences from distinct bat species, which demonstrated that lower degrees of host divergence between different species increase the chances of CST spillover and historical host shifts⁵. To a lesser extent, range overlap also played a role in the CST dynamics. So, despite the tremendous evolutionary potential that is generally ascribed to rapidly evolving viruses, which has sometimes led to the expectation that CST will be limited by ecological boundaries^{4,14}, CST is mainly restricted by host divergence in North American bat rabies populations.

The phylogenetic structuring into host-associated lineages, each maintained by a dominant bat species (*cf.* figure 1), allowed Streicker *et al.* (2010)⁵ to use an operational definition of host shifts and CST: while inferred changes in host in the ancestral history between these lineages reflects host shifting, viral jumps between the dominant host and other bat species within each lineage were considered to represent CST. To quantify rabies CST, Streicker *et al.* (2010)⁵ applied a structured population genetics approach to viral sequence subsets for pairs of host species. For each pair of species that was infected by a common viral lineage, different hypotheses of CST directionality were tested and estimates for the migration rate β_{ij} from bat species i to j were obtained using Migrate¹⁵. These migration rates were subsequently used to calculate *per capita* CST rates (R_{ij}), which can be interpreted as the expected number of infections in bat species i resulting from a single infected individual from species j , based on $R_{ij} = \beta_{ij} \times \theta_j \times \tau^{-1}$, where θ_j represents an estimate of the genetic diversity for the viral population in bat species j and τ is the generation time. The latter is the sum of the incubation and infectious periods and taken to be 29 days based on controlled infection studies in insectivorous bats¹⁶. Finally, several factors were assessed as potential predictors for the R_{ij} estimates using standard generalized linear model (GLM) testing. Not only does this procedure require a series of population genetic analyses on subsets of viral sequence data, but also the considerable uncertainty that is generally associated with such estimation is necessarily ignored prior to statistical assessment. Although CST was the primary focus of the study by Streicker *et al.* (2010)⁵, the authors also explored host shifts

using a phylogenetic diffusion approach¹⁷ and found some support for a correlation between host shifting and phylogenetic similarity between the hosts.

Here, we advance the application of phylogenetic diffusion models to processes of host transitioning and describe a flexible Bayesian statistical framework to reconstruct virus transmission between different host species while simultaneously testing and quantifying the contribution of multiple ecological and evolutionary drivers of both CST spillover and host shifting. For this purpose, we parameterize the infinitesimal rates of a stochastic discrete diffusion process as a generalized linear model (GLM) and perform Bayesian model averaging over several potential predictors of viral dispersal among host species. To discriminate between dead-end infection and sustained transmission in the new recipient species, we extend the diffusion approach to allow for a different host transition process on external and internal branches. Because understanding viral distributions within host ranges is important for anticipating emergence and developing appropriate strategies for prevention^{7,10}, we use a separate GLM diffusion model to identify potential predictors of viral spread in geographic space.

Finally, we demonstrate how a Bayesian stochastic search variable selection procedure is able to estimate the connectivity in terms of viral transmission among host species while Markov jump counts quantify the transmission intensity along these connections. We compare these estimates to *per capita* CST rates represented in a transmission network⁵, which were obtained by the pairwise population genetic estimation procedure.

2 METHODS

2.1 Genetic and epidemiological data

Host species, spatial locations and sampling collection year were annotated for 372 nucleoprotein gene sequences (nucleotide positions: 594 to 1353). This data comprised a total of 17 bat species sampled between 1997 until 2006 across 14 states in the United States⁵. Two additional species that had been excluded from the original analysis due to a limited amount of available sequences, *Myotis austroriparius* (Ma) and *Parastrellus hesperus* (Ph), were now included. We also included a virus sequence with an unknown sampling date (accession no. TX5275), sampled in Texas from *Lasiurus borealis*, and estimate its sampling date¹⁸.

For the predictors of cross-species transmission, we considered phylogenetic distances between bat species, geographic range overlap, ecological similarities in roost structures, wing aspect ratio, wing loading capacity and similarities in body sizes [described in detail in Streicker *et al.* (2010)⁵]. Geographic range overlap was estimated as the percentage of overlap between the geographical range occupied by the recipient and donor species. Wing aspect ratio is defined as the ratio of the length of the wing to the width of the wing. Wing loading capacity is defined as the weight of a bat species divided by the area of the wings (in units of Kg *per* square meter). To relate the overlap of roost structures among all species, a binary matrix was used.

To test different determinants of viral dispersal between localities we considered three distinct predictors: great-circle distances between each pair of locations (taken as the centroid of the county where each bat species was found), the number of rabies virus cases in bats in each of the relevant US states during 2010¹⁹ (a crude proxy for population size in the absence of such numbers for each bat species), and the geographic area in square kilometers of each federate state.

2.2 Generalized linear model diffusion and branch partitioning

We model CST spillover and host shifting in the rabies virus evolutionary history as a stochastic diffusion process among a set of discrete states (in this case, bat species) in a Bayesian framework. This approach uses a continuous-time Markov chain (CTMC) to model discrete outcomes as a continuous function of time in temporally-calibrated phylogenetic trees and has been introduced for phylogeographic estimation in which case locations make up the discrete states¹⁷. In our host transition application, we can represent the Markov process as a directed graph of host states among which viruses are transmitted. The rates or intensities at which viruses transition among pairs of hosts are typically denoted as the ij -th elements (Λ_{ij}) of a transition rate matrix Λ . Standard Bayesian inference under this model, including a parametrization that aims to infer a sparse transition matrix through Bayesian stochastic search variable selection (BSSVS), has been described in Lemey *et al.* (2009)¹⁷.

To test predictors for the CTMC transition rates among pairs of hosts (Λ_{ij}), we use a recent extension of the phylogenetic diffusion model that parameterizes these rates as a log-linear function of an arbitrary number of predictors⁽²⁰⁾. Briefly, this generalized linear model (GLM) specifies coefficients (β_j) for each predictor p_j , allowing the estimation of their contribution to the diffusion process, as well as (0,1)-indicator variables (δ_j) to model the inclusion or exclusion of each predictor, such that the following relationship holds:

$$\log \Lambda_{ij} = \beta_1 \delta_1 \log(p_1) + \beta_2 \delta_2 \log(p_2) + \dots + \beta_n \delta_n \log(p_n), \quad (1)$$

for each Λ_{ij} and the n predictors.

By considering the potential contribution of all predictors simultaneously and jointly estimating both their importance (δ_j) and relative size (β_j), we efficiently perform Bayesian model averaging over all potential predictors for the discretized host transitioning process while simultaneously reconstructing this process. Lemey *et al.* (2012)²⁰ discuss a Metropolis-Hastings transition kernel for $\beta = (\beta_1, \dots, \beta_n)$ that exploits the fixed correlation structure between predictors. We also refer to Drummond and Suchard (2010)²¹ for a transition kernel on $\delta = (\delta_1, \dots, \delta_n)$. Based on the prior and posterior expectation for δ_j , which can be considered as the inclusion probability for a predictor p_j , the support for each predictor can be expressed as a Bayes factor²⁰.

Here, we extend the phylogenetic diffusion model, including the GLM parameterization, by allowing a different transition process on external (Λ^{ext}) and internal (Λ^{int}) branches in order to discriminate between recent cross-species transmissions, many of which are likely to result in dead-end infections, and host shifts deeper in the evolutionary history that reflect successful onwards transmission in the new host species.

We follow standard phylogenetic practice in Bayesian inference by sharing evolutionary models among all branches throughout the evolutionary history, except for the GLM specific parameters (Λ^{ext} and Λ^{int}) including the effect sizes (β^{ext} and β^{int}) for the predictors and the indicator variables (δ^{ext} and δ^{int}) that determine the inclusion of these predictors.

All predictors were log transformed and standardized, except for the overlap of roost structures, which was coded as a vector of binary indicators for sharing or not sharing roost structures (XML available as ESI†).

While the external/internal GLM branch partitioning (BP) was used to investigate predictors of CST and host shifts, we apply this partitioning simultaneously with a separate homogeneous GLM diffusion model²⁰ to investigate predictors of spatial diffusion.

2.3 BEAST with BEAGLE inference

Discrete phylogenetic diffusion analyses were performed under an asymmetric diffusion model²² using Markov chain Monte Carlo (MCMC) implemented in BEAST v.1.7²³. Two chains of 2.5×10^8 steps, sub-sampled every 50,000th generation were combined after discarding 10% of the generations from each as burn-in. Analyses were performed under a General Time Reversible (GTR) nucleotide substitution model, with 4 Γ rate categories and a proportion I of invariant sites and using a flexible Bayesian skyride demographic prior²⁴ and an uncorrelated lognormal relaxed molecular clock²⁵. A BSSVS procedure was used to identify significant pathways of host and spatial diffusion¹⁷. As a measure of statistical support for rates between discrete traits, e.g. host species or spatial locations, the BSSVS approach delivers a Bayes factor (BF) test by comparing the posterior to the prior odds that a particular rate is required to explain the diffusion process¹⁷. We follow standard terminology in BF interpretation²⁶, in which the strength of evidence for a particular rate is substantial when BF>3, strong if BF>10, very strong if BF>30 and decisive if BF>100. In addition to estimating support for diffusion pathways, we also used a robust counting procedure^{12,27} to estimate the posterior expectations of the number of host transitions (Markov jumps) along the branches of the unknown tree²⁸. Convergence of the MCMC output was inspected using Tracer and a maximum clade credibility tree was summarized using TreeAnnotator and visualized using FigTree graphical user-interface (available at <http://tree.bio.ed.ac.uk/>). All analyses were performed using the BEAGLE library to enhance computation speed^{29,30}.

3 RESULTS

3.1 Determinants of cross-species transmission spillover and host shifts in the bat rabies virus evolutionary history

We analyze a heterochronous dataset comprising 372 nucleoprotein gene sequences sampled from 17 bat species using a full probabilistic model that encompasses components of timed sequence evolution, hosts transitioning and spatial dispersal. As an illustration of the former, our Bayesian inference procedure arrives at an estimate of the bat virus nucleoprotein gene evolutionary rate of 2.77×10^{-4} (95% Bayesian Credible Interval, BCI: 1.25×10^{-4} to 4.32×10^{-4}) substitutions per site per year, and a most recent common ancestor of bat rabies in North America dated back to 1631 (95% BCI: 1353 to 1847) (figure 1).

To identify the factors that determine CST spillover and its fate in the new host, we first adopted a recently developed generalized linear model (GLM) extension of a Bayesian phylogenetic diffusion model that has been introduced in a phylogeographic context²⁰. Here, we refer to this as the 'homogeneous GLM diffusion model' and employ this to simultaneously reconstruct host transition processes in the entire viral evolutionary history while identifying the variables that contribute significantly to this process. We follow Streicker *et al.* (2010)⁵ and consider host genetic distance, geographic range overlap, and similarities in roost structures, wing aspect ratio, wing loading and body size as potential predictors of the host diffusion process.

Figure 2 lists BF support for each predictor as well as the conditional effect sizes (cES) on a log scale; the latter summarizes the coefficients conditional on the predictor being included in the GLM model ($\beta_i/\delta_i = 1$). The negative conditional cES obtained using the homogeneous GLM diffusion model (open squares) for host distance [-1.21 (95% BCI: $-1.64, -0.85$)] imply that lower genetic distances between host species are predictive of higher rates of viral host jumping with a decisive statistical support (BF=7974). Conversely, coefficients above zero indicate a positive correlation between the intensity of viral host

jumping and the extent of geographical range overlap [ES =1.03 (95%BCI: 0.28, 1.96)], albeit with only a modest support (BF=4.45).

To further discriminate between recent CSTs and successfully established host shifts that reflect onwards transmission in the new host species, we extend the phylogenetic diffusion approach in BEAST to allow for a separate discrete diffusion process on both internal and external branches in the phylogeny. This branch partitioning allows the separation of recent CST, which likely represent evolutionary dead-ends in the new host species as expected from the typical short terminal branch length of such tips⁵, from historical host shifts that occurred deeper in the evolutionary history.

The branch-partitioned GLM diffusion model reveals that genetic distance between hosts is a strong predictor for both CST spillover and historical host shifts (figure 2). This is corroborated by the decisive BF rates obtained for host genetic similarity using both the internal branch GLM (BF=3374) and the external branch GLM (BF=27.04). In the two cases, we also obtain cES estimates close to -1 [-0.82 (95%BCI: -1.14, -0.52) and -0.78 (95%BCI: -1.10, -0.40), respectively]. For geographical range overlap, we obtain moderate support (BF=7.24) and a positive conditional effect size of 1.03 with credible intervals that exclude zero (0.28, 1.96) for the external branches. However, we did not find support for an impact of geographical range overlap in host shifting [BF=0.16 and cES estimates of 0.29 (95%BCI: -0.63, 1.80)]. Taken together, the results obtained using the branch-partitioned GLM diffusion model strongly support that the intensity of both recent CST and historical host shifts is predicted by host genetic similarity, and for recent CST this implies that merely establishing an infection of a single individual of a naïve host species may depend on its genetic relatedness to the donor bat species even if this results in a dead-end infection. Moreover, our results also show that some degree of geographical range overlap is required for recent CST spillover, but it is not a significant predictor of established host shifts.

In agreement with previous findings⁵, our analysis did not reveal a significant role for roost structures, wing aspect ratio, wing loading and body size, which represent ecological predictors in our GLM approach.

3.2 Determinants of spatial dispersal

We further explore the application of a homogeneous GLM diffusion model²⁰ to identify possible predictors of viral dispersal among the 14 states in the US. This was done simultaneously with the host jump inference, and further illustrates the flexibility of our approach in incorporating different data types in a single probabilistic framework. Our results indicate a key role of spatial distance in viral spread between spatial localities [BF=6516, with a cES of -1.14 (95% BCI: -1.43, -0.86)] (figure 3). This provides decisive support for the notion that viral dispersal occurs mostly between closely located regions rather than through long distance dispersal, despite the mobility of some bat species. Such knowledge may be useful to take into account in phylogeographic inferences that necessarily operate on sparse data. Furthermore, our analysis did not reveal evidence for the predictive role of the number of rabies cases or the geographical area of each of the US states considered.

3.3 Transmission connectivity and magnitude of host transitioning

Based on a series of structured coalescent analyses of viral migration among pairs of host species, Streicker *et al.* (2010)⁵ quantified *per capita* transmission rates and represented these in a ‘transmission web’ network. The species pairs considered for this network consisted of each combination of major bat host species associated with a viral lineage and the assumed recipient species in these lineages. Therefore, the connectivity only represents

the CST dynamics implied within the host-associated lineages; the viral transmission along these connections is an estimated quantity obtained by genealogy-based population genetic inference.

Here, we first attempt to capture the connectivity among bat species using a BSSVS procedure under an asymmetric model of host diffusion¹⁷. In this case, the connectivity is estimated by identifying highly supported host transition rates without conditioning on the observation of host-associated lineages. This procedure considers the complete viral evolutionary history and not only the host pairs involved in CST.

Figure 4 *a* shows the rates that were supported by a relatively strong BF support ($BF > 10$). The BSSVS procedure identifies support for a total of 19 host transition rates, while a total of 31 CST connections were implied by the transmission web in Streicker *et al.* (2010)⁵. Fifteen out of the 19 well-supported rates (80%) are represented by connections in the previously published transmission web. The four additional host-transitioning rates inferred with strong support by our approach (starred arrows in figure 4 *a*) may reflect host jumps ancestral to the host-associated lineages or more subtle CST dynamics within those lineages. An example of the latter is the host transition rate from Lx to Ap species which is supported in our analysis by a BF of 28.5. A close inspection of our MCC tree shows that within the Lc associated lineage, the discrete diffusion approach reconstructs a transmission from species Lc to Lx and then subsequently from Lx to Ap, instead of the transition from Lc to Ap inferred in the original analysis⁵. Similar scenarios can be identified for the other additional rates. Because Streicker *et al.* (2010)⁵ considers the Lc species to be the major host associated with this lineage, and as a consequence, Lx and Ap to be recipient species within this lineage, transmission to potentially intermediate hosts as Lx are not represented by connections in the transmission web. The existence of such intermediate hosts is particularly plausible when the two spillover hosts are found in the same geographical region in the same time frame. This is the case for at least Lbl and Mc⁵. Another possible explanation is that local dynamics within the reservoir species lead to multiple CSTs, while by chance the reservoir host is not sampled and thus the two recent spillover hosts seem very closely related. Our connectivity inference does not question the assumptions of major host species being associated with different viral lineages, but simply demonstrates that CSTs additional to those from these major host species cannot always be excluded by the data.

When the BF cut-off was lowered to a moderate support of 5, our connectivity approach identifies support for a total of 31 host transitioning rates, with 20 of these well-supported rates (65%) being represented in the CST transmission web⁵. The decrease in consistency with the previous CST transmission web⁵ can be explained by the fact that a lower BF invokes many more uncertain rates that yield less convincing support for their involvement in CST, and also rates involved with ancestral host shifts may become more prominent under lower cut-offs.

While the BSSVS procedure delivers the statistical support for particular host transitions, it does not provide a quantification of the magnitude of these host transitions. For the latter, we employ Markov jump estimations based on robust counting techniques^{12,27,28} and summarize the expected number of jumps along the connectivity identified by BSSVS in figure 4 *b*. It is interesting to note that not all the strongly supported BF rates actually correspond to a high magnitude in host transition rates. For example, while we obtain a very strong BF support of 97 for the host jump between Tb and Ef, we estimate only a mean of 1 Markov jump between these hosts. Conversely, we estimate 3 Markov jumps from Lc to Ef, but with a BF support of 12 for this connection.

4 DISCUSSION

In this study, we present a flexible phylogenetic diffusion approach as an alternative to coalescent estimation for investigating cross-species transmission and host switching based on viral genetic data. Phylogenetic diffusion models are now frequently being used for phylogeographic analyses³¹, but also the inference of host jumping has become of interest^{32,33}. The most important contribution of the current work is the extension of a GLM diffusion model that allows the inference of the discrete state transition history while simultaneously identifying the underlying predictors. The GLM diffusion model avoids post-hoc statistical analyses of genetic estimates, which generally involves operating on mean estimates and ignores associated uncertainty that can be considerably large. The Bayesian inference approach enables model averaging over a number of potential diffusion predictors and estimates the support and contribution of each predictor while marginalizing over phylogenetic history. Our results based on a homogeneous GLM diffusion approach corroborate that host genetic distances and, at a lesser extent, geographical range overlap pose important constraints for rabies cross-species transmission⁵.

Importantly, we extend the phylogenetic diffusion approach to allow for different processes, in the form of different CTMC matrices, for different branch sets in the phylogeny. In the case of rabies transmission, we use this to separate out and test the determinants of host transitioning on both external and internal branches, which respectively reflect CST spillover and historical shifts among various bat hosts. We believe that the branch partitioning represents an important extension of the phylogenetic diffusion approach in order to distinguish two crucial stages in viral emergence. Whereas the determinants of CST had been scrutinized by estimating *per capita* rate estimates and subsequently testing these using a standard GLM approach, a similar test procedure was not available for ancestral host jumps⁵.

However, external and internal branch partitioning only serves as an approximation to discriminate between CST and ancestral host jumps. Reassuringly, the rabies phylogeny is generally characterized by very short tips (*cf.* figure 1), and Streicker *et al* (2010)⁵ showed that they were no more genetically divergent than donor lineage viruses. This suggested that external branches of the rabies phylogeny most likely represented dead-end infections than infections occurring within stuttering chains of transmission in the recipient species, that is, chains that will propagate for a few generations in the new host species before dying out. However, this does not formally rule out the possibility of stuttering chains along the external branches. Stuttering chains of human-to-human transmission of H5N1 avian influenza provide an example for this³⁴. Importantly, host shifts at internal branches that are phylogenetically close to the external branches can also correspond to such stuttering chains of transmission. Thus, an absolute phylogenetic distinction in terms of the outcome of CST remains difficult. The external/internal branch partitioning essentially offers an operational prior distinction between jumps leading to generally 'less' and 'more' successful propagation in the new host. Further work may be aimed at methodology, perhaps in the form of mixture models, to provide better posterior classifications in terms of the outcome of host jumps in the phylogeny.

The observation that host genetic distances represent important constraints for both CST spillover and host shifts is not a standalone finding. The ability of sigma viruses to persist and replicate in *Drosophila* species has also been explained by the host phylogeny, with viral titers declining with increasing distance from the reservoir species³⁵. For fungal pathogens infecting plants, a similar relation was found between phylogenetic distance between the plant host and the likelihood of infection³⁶. More generally, the idea that phylogenetically similar species exchange viruses with higher probability of success has been well

acknowledged in the field of pathogen emergence^{3,37,38}. However, in very few cases has it been possible to isolate at which stage of a host shift such barriers may act. The strength of the current approach and Streicker *et al.* (2010)⁵ is the ability to demonstrate phylogenetic barriers at two stages: emergence and establishment. Although the findings by Londgon *et al.* (2011)³⁵ in *Drosophila sigma* viruses are consistent with this scenario, the generality of this phenomenon remains to be investigated in other systems. Our results also confirm that geographical range overlap is a modest, but non-negligible, predictor of CST spillover. For viral host jumps to result in onwards transmission to the recipient species, initial exposure of the new host species to the pathogen is required². For example, ecological opportunity, determined by ecological changes driven by the process of economic development and land use, have previously been implicated as a determinant of successful CST from animal reservoir species to humans^{3,39,40}.

The fact that geographical range overlap is apparently not required to explain the host shift diffusion process could have many explanations. First, it may reflect the ability of some bat species to fly long distances during seasonal migrations⁴¹. However, our spatial analyses revealed that closer geographical distances are predictive of higher viral migration rates, suggesting that viral transmission occurs predominantly at a local scale. Although the BSSVS analysis identified support for viral migration between exceptionally distant spatial locations which could possibly be related with host migration (not shown), the finding that geographic distances and genetic distances are correlated has also been shown for fox and raccoon rabies virus^{10,11}. Second, the currently observed range overlap for bat species may not have remained constant throughout bat rabies evolutionary history, which dates back several centuries for the current sample according to the divergence date estimates. Our estimates of the time of rabies evolutionary history in North America are in reasonable agreement with previous estimates^{13,42}, but even the estimates of a relatively long-standing rabies transmission dynamics may represent only a small part of the history of rabies in North America because the common ancestor of modern viral strains does not necessarily extend back to the origin of the virus⁴³. Third, there could be missing lineages in the tree (undiscovered viruses), and some inferred host shifts may actually have involved different donor species. Fourth, it is plausible that the relatively limited number of host shifts on internal branches yields less power to inform a GLM model applied to this branch set. Finally, and since the ranges of most bat species used for this analysis do overlap, it would be interesting to revisit the extent of range overlap as a predictor of CST and host shifts when larger datasets from other geographical locations become available.

In general, we cannot rule out the lack of power to explain lack of support for particular diffusion predictors, such as ecological predictors for CST (roost structures, wing aspect ratio, wing loading and body size). Phylogenetic diffusion models inevitably operate on sparse data, and while the GLM approach model generally has much fewer parameters than a standard diffusion model, it remains uncertain whether all factors contributing to the historical diffusion process can be inferred from the distribution of host or their locations at the tips of a phylogeny. In addition, sample sizes may affect the GLM parameter estimates and we cannot exclude that predictors other than the ones we specified might be involved with host transitioning or spatial dispersal. For example, spatial diffusion might be predicted by bat population sizes but the number of rabies cases per state used in this study might be a too crude proxy for population size.

The summary of *per capita* transmission rates in the ‘transmission web’ differs in many aspects from our phylogenetic diffusion approach and a direct comparison is therefore difficult to make. Whereas the connectivity in the previously constructed transmission web is hypothesized based on the interpretation of CST within the host-associated lineages⁵, our Bayesian phylogenetic diffusion approach attempts to estimate this connectivity, and

because it considers the entire phylogenetic history, the connectivity estimate may also represent ancestral host jumps. In addition to measuring statistical support for host jumps between pairs of species, we also estimate the number of jumps along a set of strongly supported host transition pairs using robust counting techniques. A comparison of BF support for rates of diffusion (figure 4a) and posterior estimates of the number of jumps (figure 4b) indicates that high support for connectivity does not necessarily translate into a consistently high intensity of jumps. We note that this may also be important to bear in mind when interpreting phylogeographic applications of the discrete diffusion models and BSSVS, where a well-supported rate may for example be represented by only one migration event as long that is clearly evident from the data. The distinction between support and magnitude is one that we also make in our GLM model, through effect sizes and indicators, and can be important when predictors exist on different scales. As a quantification of the magnitude of host transitioning among only strongly supported rates, the robust counting procedure should produce estimates that are more comparable to the population genetic migration rates estimated by Streicker *et al.* (2010)⁵. In this respect, it is interesting to note that the three pairs of bat species exhibiting the highest number of host transitions (species Mc and Ml, Lc and Lx, and Lb and Ls), are consistent with the population genetic estimates⁵. We note however that population genetic estimates are more appropriate than phylogenetic transition estimates to approximate *per capita* CST rates because the former adequately takes into account the ‘genetic size’ of the donor and recipient hosts of rabies transmission.

The work on rabies cross-species transmission in North American bats species has recently been extended by an investigation of evolutionary rate shifts associated with ancestral host shifts⁴². Based on a phylogenetic analysis using the same Bayesian software in which we implemented our discrete diffusion models, Streicker *et al.* (2010)⁴² demonstrate that rabies lineages associated with subtropical bat populations evolve nearly four times faster than those associated with temperate species. To find statistical evidence for this, the authors adopted hierarchical phylogenetic model (HPM) methodology⁴⁴ and incorporate fixed effects to allow to test differences in the evolutionary rate estimate for different groups of viral lineages (e.g., grouped according to host geography⁴²). Although the fixed-effect HPM model and the discrete GLM-diffusion model are very different approaches, performing Bayesian estimation for these models relies on similar inference methodology because the fixed effects in the HPM are also specified through coefficients that quantify the effect size and effect indicators that represent the inclusion probability or support.

5 CONCLUSION

In conclusion, the development and extension of a flexible approach to reconstruct discrete state transition processes while simultaneously identifying their determinants provides an useful framework to scrutinize CST and host shifts. The identification of risk factors that control or influence host transitioning may have important implications in the prediction, surveillance and control of new epidemic diseases⁴. We believe that the rabies example presented here makes a substantive contribution to this discussion.

Although we focused on multi-host reservoir dynamics of bat rabies virus, this approach is generally applicable to other pathogens and to other discrete state transition processes beyond spatial or host diffusion such as, for instances, viral diffusion between body organs and tissues. We hope that this framework will be useful to understand the key drivers of cross species dynamics for a broad range of zoonotic pathogens.

Supplementary Material

Refer to Web version on PubMed Central for supplementary material.

Acknowledgments

We are grateful to two anonymous reviewers for their helpful comments. The research leading to these results has received funding from the European Union Seventh Framework Programme [FP7/2007-2013] under Grant Agreement no. 278433-PREDEMICS and ERC Grant agreement no. 260864, the US National Science Foundation (DMS 0856099) and the US National Institutes of Health (R01 GM086887 and R01 HG006139). NRF is supported by Fundação para a Ciência e Tecnologia under grant agreement No. SFRH/BD/64530/2009. This work was facilitated by the participation of DGS and PL in the 2010 RAPIDD Workshop on Cross-species Transmission, hosted by the National Institutes of Health. Collaboration between MAS, AR and PL was supported by the National Evolutionary Synthesis Center (NES-Cent), NSF EF-0423641. AR is supported by The Wellcome Trust (WT092807MA). Further, research was partially completed while MAS and PL were visiting the Institute for Mathematical Sciences, National University of Singapore in 2011.

References

1. Morens DM, Folkers GK, Fauci AS. Emerging infections: a perpetual challenge. *Lancet Infect Dis*. Nov; 2008 8(11):710–9. [PubMed: 18992407]
2. Woolhouse MEJ, Haydon DT, Antia R. Emerging pathogens: the epidemiology and evolution of species jumps. *Trends Ecol Evol*. May; 2005 20(5):238–44. [PubMed: 16701375]
3. Lloyd-Smith JO, George D, Pepin KM, Pitzer VE, Pulliam JRC, Dobson AP, et al. Epidemic dynamics at the human-animal interface. *Science*. Dec; 2009 326(5958):1362–7. [PubMed: 19965751]
4. Parrish CR, Holmes EC, Morens DM, Park EC, Burke DS, Calisher CH, et al. Cross-species virus transmission and the emergence of new epidemic diseases. *Microbiol Mol Biol Rev*. Sep; 2008 72(3):457–70. [PubMed: 18772285]
5. Streicker DG, Turmelle AS, Vonhof MJ, Kuzmin IV, McCracken GF, Rupprecht CE. Host phylogeny constrains cross-species emergence and establishment of rabies virus in bats. *Science*. Aug; 2010 329(5992):676–9. [PubMed: 20689015]
6. Bourhy H, Kissi B, Audry L, Smreczak M, Sadkowska-Todys M, Kulonen K, et al. Ecology and evolution of rabies virus in Europe. *J Gen Virol*. Oct; 1999 80(Pt 10):2545–57. [PubMed: 10573146]
7. Russell CA, Smith DL, Childs JE, Real LA. Predictive spatial dynamics and strategic planning for raccoon rabies emergence in Ohio. *PLoS Biol*. Mar.2005 3(3):e88. [PubMed: 15737065]
8. Smith DL, Lucey B, Waller LA, Childs JE, Real LA. Predicting the spatial dynamics of rabies epidemics on heterogeneous landscapes. *Proc Natl Acad Sci U S A*. Mar; 2002 99(6):3668–72. [PubMed: 11904426]
9. Hampson K, Dushoff J, Cleaveland S, Haydon DT, Kaare M, Packer C, et al. Transmission dynamics and prospects for the elimination of canine rabies. *PLoS Biol*. Mar.2009 7(3):e53. [PubMed: 19278295]
10. Real LA, Henderson JC, Biek R, Snaman J, Jack TL, Childs JE, et al. Unifying the spatial population dynamics and molecular evolution of epidemic rabies virus. *Proc Natl Acad Sci U S A*. Aug; 2005 102(34):12107–11. [PubMed: 16103358]
11. Biek R, Henderson JC, Waller LA, Rupprecht CE, Real LA. A high-resolution genetic signature of demographic and spatial expansion in epizootic rabies virus. *Proc Natl Acad Sci U S A*. May; 2007 104(19):7993–8. [PubMed: 17470818]
12. Talbi C, Lemey P, Suchard MA, Abdelatif E, Elharrak M, Nourlil J, et al. Phylodynamics and human-mediated dispersal of a zoonotic virus. *PLoS Pathog*. 2010; 6(10):e1001166. [PubMed: 21060816]
13. Hughes GJ, Orciari LA, Rupprecht CE. Evolutionary timescale of rabies virus adaptation to North American bats inferred from the substitution rate of the nucleoprotein gene. *J Gen Virol*. May; 2005 86(Pt 5):1467–74. [PubMed: 15831959]

14. Anishchenko M, Bowen RA, Paessler S, Austgen L, Greene IP, Weaver SC. Venezuelan encephalitis emergence mediated by a phylogenetically predicted viral mutation. *Proc Natl Acad Sci U S A*. Mar; 2006 103(13):4994–9. [PubMed: 16549790]
15. Beerli P, Palczewski M. Unified framework to evaluate panmixia and migration direction among multiple sampling locations. *Genetics*. May; 2010 185(1):313–26. [PubMed: 20176979]
16. Jackson FR, Turmelle AS, Farino DM, Franka R, McCracken GF, Rupprecht CE. Experimental rabies virus infection of big brown bats (*Eptesicus fuscus*). *J Wildl Dis*. Jul; 2008 44(3):612–21. [PubMed: 18689646]
17. Lemey P, Rambaut A, Drummond AJ, Suchard MA. Bayesian phylogeography finds its roots. *PLoS Comput Biol*. Sep.2009 5(9):e1000520. [PubMed: 19779555]
18. Shapiro B, Ho SYW, Drummond AJ, Suchard MA, Pybus OG, Rambaut A. A Bayesian phylogenetic method to estimate unknown sequence ages. *Mol Biol Evol*. Feb; 2011 28(2):879–87. [PubMed: 20889726]
19. Blanton JD, Palmer D, Dyer J, Rupprecht CE. Rabies surveillance in the United States during 2010. *J Am Vet Med Assoc*. Sep; 2011 239(6):773–83. [PubMed: 21916759]
20. Lemey, P.; Rambaut, A.; Bedford, T.; Bielejec, F.; Baele, G.; Russel, CA., et al. The seasonal flight of influenza: a unified framework for spatiotemporal hypothesis testing. 2012. p. 1-16. Pre-print: <http://arxiv.org/abs/12105877>
21. Drummond AJ, Suchard MA. Bayesian random local clocks, or one rate to rule them all. *BMC Biol*. 2010; 8:114. [PubMed: 20807414]
22. Edwards CJ, Suchard MA, Lemey P, Welch JJ, Barnes I, Fulton TL, et al. Ancient hybridization and an Irish origin for the modern polar bear matriline. *Curr Biol*. Aug; 2011 21(15):1251–8. [PubMed: 21737280]
23. Drummond AJ, Suchard MA, Xie D, Rambaut A. Bayesian phylogenetics with BEAUti and the BEAST 1.7. *Mol Biol Evol*. Mar.2012
24. Minin VN, Bloomquist EW, Suchard MA. Smooth skyride through a rough skyline: Bayesian coalescent-based inference of population dynamics. *Mol Biol Evol*. Jul; 2008 25(7):1459–71. [PubMed: 18408232]
25. Drummond AJ, Ho SYW, Phillips MJ, Rambaut A. Relaxed phylogenetics and dating with confidence. *PLoS Biol*. May.2006 4(5):e88. [PubMed: 16683862]
26. Jeffreys, H. *Theory of Probability*. 3rd ed.. Oxford University Press; 1961.
27. Minin VN, Suchard MA. Counting labeled transitions in continuous-time Markov models of evolution. *J Math Biol*. Mar; 2008 56(3):391–412. [PubMed: 17874105]
28. O'Brien JD, Minin VN, Suchard MA. Learning to count: robust estimates for labeled distances between molecular sequences. *Mol Biol Evol*. Apr; 2009 26(4):801–14. [PubMed: 19131426]
29. Suchard MA, Rambaut A. Many-core algorithms for statistical phylogenetics. *Bioinformatics*. Jun; 2009 25(11):1370–6. [PubMed: 19369496]
30. Ayres DL, Darling A, Zwickl DJ, Beerli P, Holder MT, Lewis PO, et al. BEAGLE: an application programming interface and high-performance computing library for statistical phylogenetics. *Systematic biology*. 2012; 61(1):170–173. [PubMed: 21963610]
31. Faria NR, Suchard MA, Rambaut A, Lemey P. Toward a quantitative understanding of viral phylogeography. *Curr Opin Virol*. Nov; 2011 1(5):423–9. [PubMed: 22440846]
32. Hass J, Matuszewski S, Cieslik D, Haase M. The role of swine as “mixing vessel” for interspecies transmission of the influenza A subtype H1N1: a simultaneous Bayesian inference of phylogeny and ancestral hosts. *Infect Genet Evol*. Mar; 2011 11(2):437–41. [PubMed: 21163369]
33. Weinert LA, Welch JJ, Suchard MA, Lemey P, Rambaut A, Fitzgerald JR. Molecular dating of human-to-bovid host jumps by *Staphylococcus aureus* reveals an association with the spread of domestication. *Biol Lett*. May.2012
34. Ungchusak K, Auewarakul P, Dowell SF, Kitphati R, Auwanit W, Puthavathana P, et al. Probable person-to-person transmission of avian influenza A (H5N1). *N Engl J Med*. Jan; 2005 352(4):333–40. [PubMed: 15668219]
35. Longdon B, Hadfield JD, Webster CL, Obbard DJ, Jiggins FM. Host phylogeny determines viral persistence and replication in novel hosts. *PLoS Pathog*. Sep.2011 7(9):e1002260. [PubMed: 21966271]

36. Gilbert GS, Webb CO. Phylogenetic signal in plant pathogen-host range. *Proc Natl Acad Sci U S A*. Mar; 2007 104(12):4979–83. [PubMed: 17360396]
37. Taylor LH, Latham SM, Woolhouse ME. Risk factors for human disease emergence. *Philos Trans R Soc Lond B Biol Sci*. Jul; 2001 356(1411):983–9. [PubMed: 11516376]
38. Wolfe ND, Dunavan CP, Diamond J. Origins of major human infectious diseases. *Nature*. May; 2007 447(7142):279–83. [PubMed: 17507975]
39. Woolhouse M, Gaunt E. Ecological origins of novel human pathogens. *Crit Rev Microbiol*. 2007; 33(4):231–42. [PubMed: 18033594]
40. Jones KE, Patel NG, Levy MA, Storeygard A, Balk D, Gittleman JL, et al. Global trends in emerging infectious diseases. *Nature*. Feb; 2008 451(7181):990–3. [PubMed: 18288193]
41. Calisher CH, Childs JE, Field HE, Holmes KV, Schountz T. Bats: important reservoir hosts of emerging viruses. *Clin Microbiol Rev*. Jul; 2006 19(3):531–45. [PubMed: 16847084]
42. Streicker DG, Lemey P, Velasco-Villa A, Rupprecht CE. Rates of viral evolution are linked to host geography in bat rabies. *PLoS Pathog*. May.2012 8(5):e1002720. [PubMed: 22615575]
43. Holmes EC. Molecular clocks and the puzzle of RNA virus origins. *J Virol*. Apr; 2003 77(7):3893–7. [PubMed: 12634349]
44. Edo-Matas D, Lemey P, Tom JA, Serna-Bolea C, van den Blink AE, van 't Wout AB, et al. Impact of CCR5delta32 host genetic background and disease progression on HIV-1 intrahost evolutionary processes: efficient hypothesis testing through hierarchical phylogenetic models. *Mol Biol Evol*. May; 2011 28(5):1605–16. [PubMed: 21135151]

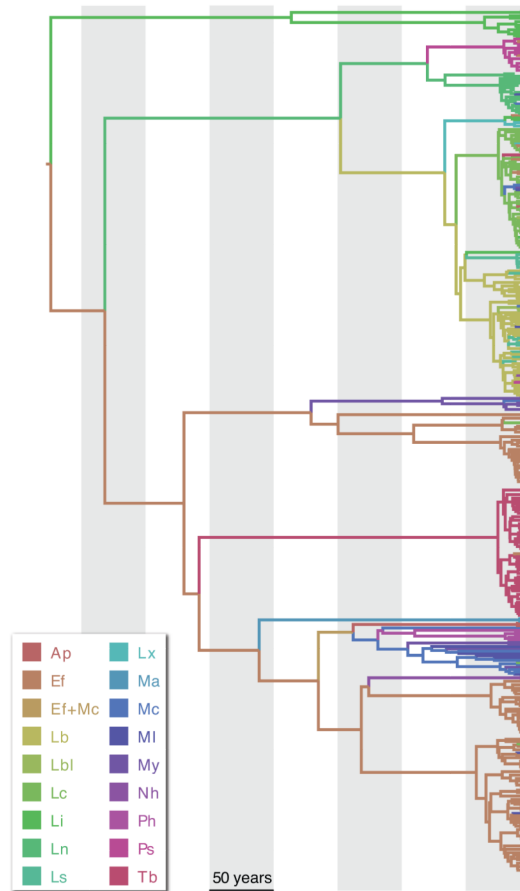


Fig. 1. Time-calibrated maximum clade credibility (MCC) tree inferred for 372 nucleoprotein gene sequences sampled from 17 bat species. Branches were coloured according to most probable host species, indicated in the color legend. Ap=*Antrozous pallidus*, Ef=*Eptesicus fuscus*, Lb=*Lasiurus borealis*, Lbl=*Lasiurus blossevillii*, Lc=*Lasiurus cinereus*, Li=*Lasiurus intermedius*, Ln=*Lasionycteris noctivagans*, Ls=*Lasiurus seminolus*, Lx=*Lasiurus xanthinus*, Ma=*Myotis austroriparius*, Mc=*Myotis californicus* complex, MI=*Myotis lucifugus* complex, My=*Myotis yumanensis*, Nh=*Nycticeius humeralis*, Ph=*Parastrellus hesperus*, Ps=*Perimyotis subflavus*, Tb=*Tadarida brasiliensis*.

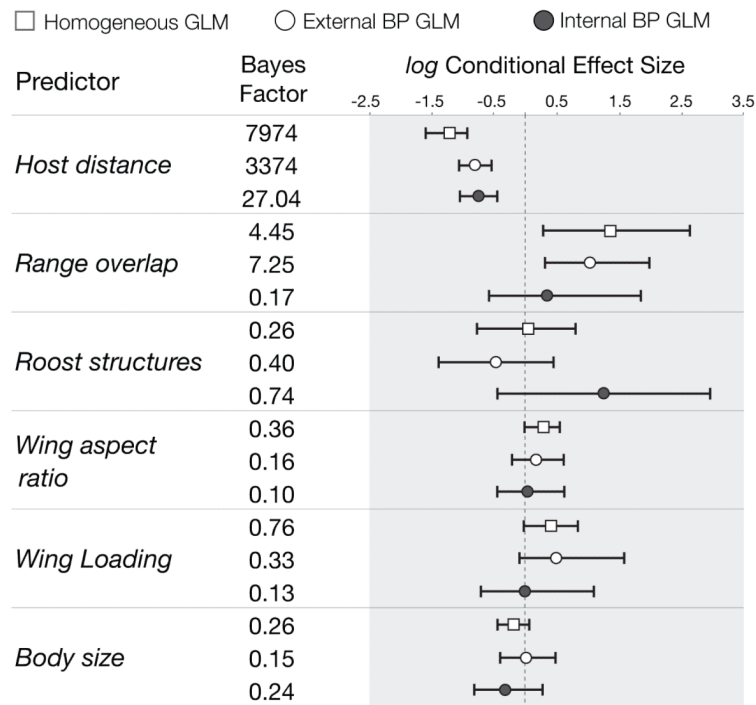


Fig. 2. Predictors of CST spillover and historical host shifts for bat rabies virus sampled in North America. For each potential predictor, the Bayes factor (BF) support and the conditional effect sizes (CES) obtained using a homogeneous (squares) and a branch-partitioned GLM diffusion approach (circles) implemented in BEAST are shown (posterior mean and 95% BCI). The contribution of external (related to CST spillover) and internal (historical host shifts) branch substitution processes is shown separately using empty and filled circles respectively. Note that the confidence intervals for the CES of the predictors with BF above 3 exclude zero, which can be considered as an additional indication for its importance.

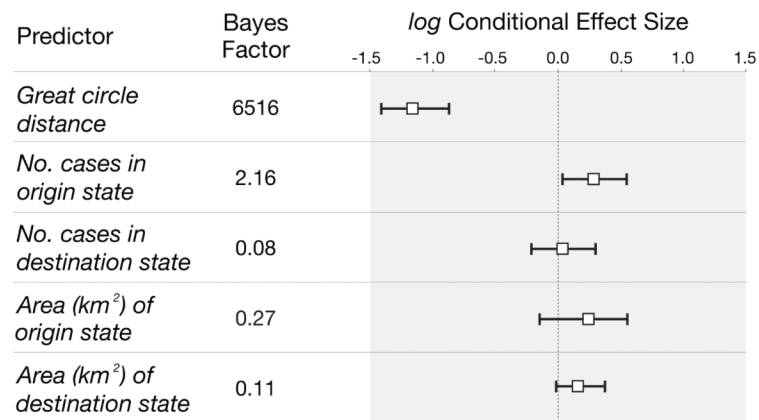


Fig. 3. Determinants of geographical dispersal for bat rabies virus in North America. For each potential predictor, the Bayes factor (BF) support and the conditional effect size estimate obtained using a homogeneous GLM diffusion approach are shown (mean and 95% BCI).

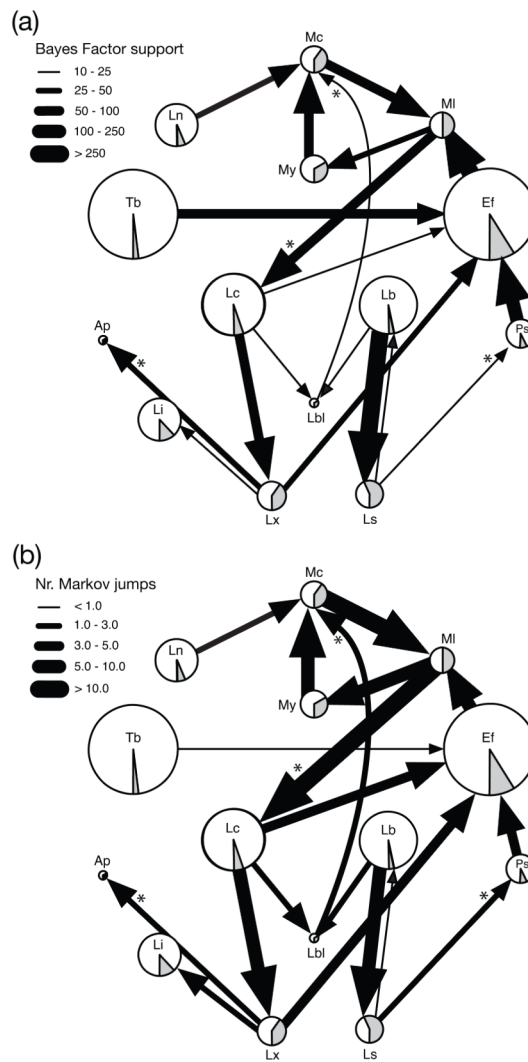


Fig. 4. Connectivity and magnitude of host transitioning between bat species. In panel A, the width of host transition rate reflects its statistical support in terms of Bayes factor (BF). Only host transition rates supported by a strong $BF > 10$ and the species involved in these rates are shown. In panel B, the width of the transitions between pairs of host species reflects the magnitude of the strongly supported transition rates. Rates inferred by our homogenous BSSVS diffusion approach that are not represented by corresponding connections in Streicker *et al.* (2010)⁵ are denoted with asterisks. Pie charts in grey show the observed proportion of each species infected by CST as implied within the host-associated lineages and pie charts diameter is proportionate to the number sampled bats as in the original transmission web⁵. The naming of the bat species is consistent with the legend of figure 1.