



# THE UNIVERSITY *of* EDINBURGH

## Edinburgh Research Explorer

### **Intimin, tir, and Shiga toxin 1 do not influence enteropathogenic responses to Shiga toxin-producing Escherichia coli in bovine ligated intestinal loops**

**Citation for published version:**

Stevens, MP, Marches, O, Campbell, J, Huter, V, Frankel, G, Phillips, AD, Oswald, E & Wallis, TS 2002, 'Intimin, tir, and Shiga toxin 1 do not influence enteropathogenic responses to Shiga toxin-producing Escherichia coli in bovine ligated intestinal loops' *Infection and Immunity*, vol 70, no. 2, pp. 945-952.

**Link:**

[Link to publication record in Edinburgh Research Explorer](#)

**Document Version:**

Author final version (often known as postprint)

**Published In:**

*Infection and Immunity*

**Publisher Rights Statement:**

Copyright © 2002, American Society for Microbiology

**General rights**

Copyright for the publications made accessible via the Edinburgh Research Explorer is retained by the author(s) and / or other copyright owners and it is a condition of accessing these publications that users recognise and abide by the legal requirements associated with these rights.

**Take down policy**

The University of Edinburgh has made every reasonable effort to ensure that Edinburgh Research Explorer content complies with UK legislation. If you believe that the public display of this file breaches copyright please contact [openaccess@ed.ac.uk](mailto:openaccess@ed.ac.uk) providing details, and we will remove access to the work immediately and investigate your claim.



## Intimin, Tir, and Shiga Toxin 1 Do Not Influence Enteropathogenic Responses to Shiga Toxin-Producing *Escherichia coli* in Bovine Ligated Intestinal Loops

Mark P. Stevens,<sup>1</sup> Olivier Marchès,<sup>2</sup> June Campbell,<sup>1</sup> Veronika Huter,<sup>2</sup> Gad Frankel,<sup>3</sup> Alan D. Phillips,<sup>4</sup> Eric Oswald,<sup>2</sup> and Timothy S. Wallis<sup>1\*</sup>

Division of Environmental Microbiology, Institute for Animal Health, Compton Laboratory, Berkshire, RG20 7NN,<sup>1</sup> Department of Biochemistry, Imperial College of Science, Technology and Medicine, London, SW7 2AZ,<sup>3</sup> and University Department of Paediatric Gastroenterology, Royal Free Hospital, London, NW3 2QG,<sup>4</sup> United Kingdom, and Unité Mixte de Microbiologie Moléculaire, Institut National de la Recherche Agronomique-Ecole Nationale Vétérinaire de Toulouse, 31076 Toulouse Cedex, France<sup>2</sup>

Received 10 August 2001/Returned for modification 1 October 2001/Accepted 23 October 2001

**Shiga toxin-producing *Escherichia coli* (STEC) comprises a group of attaching and effacing (A/E) enteric pathogens of animals and humans. Natural and experimental infection of calves with STEC may result in acute enteritis or subclinical infection, depending on serotype- and host-specific factors. To quantify intestinal secretory and inflammatory responses to STEC in the bovine intestine, serotypes that are associated with human disease (O103:H2 and O157:H7) were introduced into ligated mid-ileal loops in gnotobiotic and conventional calves, and fluid accumulation and recruitment of radiolabeled neutrophils were measured after 12 h. STEC serotype O103:H2, but not serotype O157:H7, elicited strong enteropathogenic responses. To determine if the inflammatory response to STEC O103:H2 in calves requires Shiga toxin 1 or intimate bacterial attachment to the intestinal epithelium, defined mutations were made in the *stx1*, *eae*, and *tir* genes. Our data indicate that some STEC induce intestinal inflammatory responses in calves by a mechanism that is independent of A/E-lesion formation, intimin, or Shiga toxin 1. This may have implications for strategies to reduce STEC carriage in cattle.**

Shiga toxin-producing *Escherichia coli* (STEC) comprises an emerging group of zoonotic enteric pathogens (41). In humans, STEC infections result in bloody or nonbloody diarrhea, which may be complicated by hemorrhagic colitis and severe renal and neurological sequelae, including hemolytic uremic syndrome (HUS) (45, 55). The pathogenesis of HUS is believed to involve the translocation of Shiga toxin (Stx1 and/or Stx2; also called verocytotoxins), produced by STEC in the intestinal lumen, to systemic sites, where they cause microvascular endothelial cell damage, fibrin-platelet thrombus formation, and thrombocytopenia (45).

Cattle are an important reservoir of STEC (25), and human infections are frequently associated with the consumption of contaminated beef and dairy products (26). Severe cases of infection of susceptible calves with bovine virulent STEC strains may result in atrophy of the villi, epithelial cell damage, diffuse infiltration of neutrophils into the lamina propria and intestinal lumen, and the formation of a pseudomembrane containing blood, fibrin, cellular debris, and neutrophils (29, 46). A similar histopathology occurs in some cases of STEC-associated hemorrhagic colitis in humans (27, 55). An understanding of the induction of intestinal inflammatory responses to STEC is important in the development of strategies to reduce the prevalence of STEC in cattle. By implication, such strategies may lower the incidence of human STEC infections.

Infection of the gastrointestinal tracts of conventional cattle

and 5-day-old gnotobiotic calves by STEC serotype O157:H7 is asymptomatic (5, 63). However, *E. coli* O157:H7 is frequently associated with human disease, and the molecular basis of STEC serotype host specificity is unknown. Infection of neonatal colostrum-deprived calves with *E. coli* O157:H7 may result in enterocolitis similar to that seen in humans (8); however, such animals are highly susceptible to infection and are not ideal models for studying the enteropathogenesis of STEC in cattle. Unlike *E. coli* O157:H7, STEC serotype O103:H2 is frequently isolated from diarrheic calves (36, 62), as well as being associated with human disease (38).

Colonization of the gastrointestinal tracts of colostrum-deprived neonatal calves and piglets by *E. coli* O157:H7 and the induction of colonic edema and diarrhea requires the bacterial outer membrane protein intimin (Eae) (7, 14, 39, 59). The *eae* gene also plays a role in the pathogenesis of infections by enteropathogenic *E. coli* (EPEC) in humans (13), rabbit EPEC (REPEC) in infant rabbits (37), and *Citrobacter rodentium* in mice (30, 53). In all these cases, intimin is required for the formation of intestinal attaching and effacing (A/E) lesions, which are characterized by intimate bacterial attachment to the apical surfaces of enterocytes and the localized destruction of microvilli (22). This histopathology is determined by the chromosomal locus for enterocyte effacement (LEE) and also requires the LEE-encoded Tir protein, which is translocated via a type III protein secretion system into host cells, where it acts as a receptor for intimin (11). Intimin can also bind to  $\beta$ 1 integrins (23), though the consequence of this is unknown.

It remains unclear if intimin per se, or intimate bacterial adherence and A/E-lesion formation, is required to elicit intestinal inflammatory responses. In mice, *C. rodentium* induces

\* Corresponding author. Mailing address: Division of Environmental Microbiology, Institute for Animal Health, Compton Laboratory, Berkshire, RG20 7NN, United Kingdom. Phone: 44 1635 577230. Fax: 44 1635 577263. E-mail: timothy.wallis@bbsrc.ac.uk.



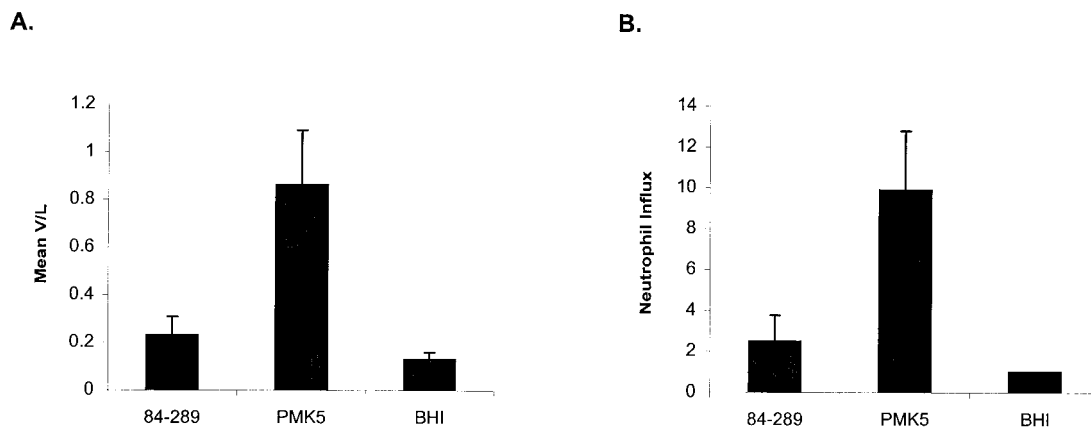


FIG. 1. Enteropathogenic responses to STEC strains 84-289 (O157:H7) and PMK5 (O103:H2) and sterile brain heart infusion (BHI) broth in the intestines of ca. 28-day-old conventional calves. (A) Fluid accumulation. Each strain was tested in triplicate mid-ileal loops, and the mean  $V/L$  ratio (+ SEM) from the three independent experiments is shown. (B) Neutrophil infiltration. The total  $^{111}\text{In}$  activity in the loop contents and mucosa was corrected for loop length, and the mean of three measurements in the mid-ileum was derived. Neutrophil influx is the ratio of the mean  $^{111}\text{In}$  activity in the test loops to  $^{111}\text{In}$  activity in the negative control loops. The mean neutrophil influx (+ SEM) from the three calves is shown.

venous blood was collected in 12 ml of acid citrate, and neutrophils were isolated according to the method of Carlson and Kaneko (4). The neutrophils were resuspended in 2 ml of  $\text{Ca}^{2+}$ -free Tyrodes buffer, radiolabeled by mixing the suspension with 3.7 MBq of  $^{111}\text{In}$ -oxinate (Mallinckrodt, Petten, The Netherlands) for 5 min, washed in Tyrodes buffer, and reinjected into the calf within 2 h of inoculation of the loops with bacteria.

Twelve hours after inoculation, enteropathogenesis was assessed with respect to fluid accumulation, neutrophil infiltration, and histological changes. The animals were killed by an overdose of pentobarbitone, and 5 ml of 10% neutral buffered formaldehyde was injected into the loops to inactivate the bacteria prior to collection of the loop contents and mucosa. Fluid secretion was measured as a ratio of the volume of fluid accumulated to loop length ( $V/L$ ), and the mean  $\pm$  standard error of the mean (SEM) was calculated from the replicates. Radioactivity associated with the loop contents and mucosa was detected using a Wallac 1275 gamma counter and was corrected for differences in loop length. Neutrophil infiltration was expressed as the ratio of  $^{111}\text{In}$  activity/ $L$  in the test loops to that in the negative control loops. Pairwise comparisons were performed at the overall 0.05 level of significance by two-way analysis of variance (Proc mixed [Statistical Analysis System; SAS Institute, Cary, N.C.]).

**Tissue sampling and light microscopy.** Samples of intestinal mucosa for histological analysis were fixed in situ by injecting ligated loops antemortem with 5 ml of 4% (wt/vol) paraformaldehyde in phosphate-buffered saline (PBS) and were then excised and immersed in fixative overnight at 4°C. For light microscopy, 5- $\mu\text{m}$ -thick transverse wax-embedded sections were stained with hematoxylin and eosin and viewed at  $\times 400$  using a Leica DMLS microscope. Images were captured with a Polaroid digital microscope camera.

**Fluorescence microscopy.** FAS for the detection of F-actin under sites of bacteria adhesion to HeLa cells was performed as described previously (33), except that bacteria were incubated on the cells for a total of 8 h. Transverse wax-embedded sections of mucosa from infected ileal loops were dewaxed and permeabilized with 0.5% (vol/vol) Triton X-100 in PBS for 30 min, and nonspecific binding sites were blocked with 0.5% (wt/vol) bovine serum albumin in PBS. Bacteria were detected with 1:100 rabbit anti-O103 typing serum (Veterinary Laboratories Agency, Weybridge, United Kingdom) and 1:100 anti-rabbit immunoglobulin-Alexa<sup>568</sup> (Molecular Probes, Leiden, The Netherlands). F-actin was stained with 1:10 Oregon green 514-phalloidin (Molecular Probes). The stained sections were washed extensively with PBS, mounted with Vectashield (Vector Laboratories, Burlingame, Calif.), and analyzed at  $\times 630$  to  $\times 1,000$  using a Leica TCS NT confocal laser scanning microscope with version 1.6.587 software.

## RESULTS

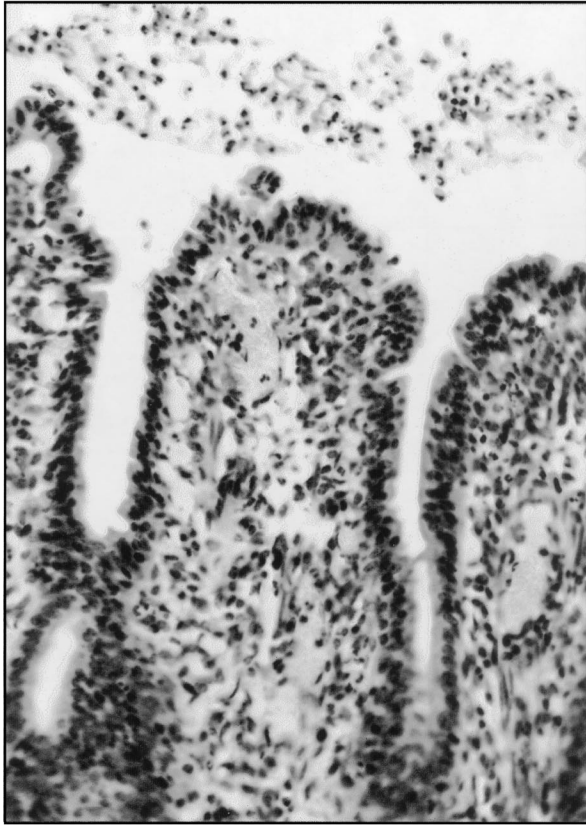
**Bovine enteropathogenic responses to different STEC serotypes.** We investigated the abilities of STEC serotypes O103:H2 and O157:H7 to elicit secretory and inflammatory

responses in a bovine ligated ileal loop assay. Ligated loops were constructed in the mid-ileum in three ca. 28-day-old conventional calves, and fluid accumulation and infiltration of  $^{111}\text{In}$ -labeled neutrophils was quantified 12 h after inoculation of the loops. Fluid accumulation and neutrophil infiltration were significantly greater in the loops inoculated with strain PMK5 ( $P < 0.05$ ) than in the control loops injected with sterile medium (Fig. 1). The enteropathogenic responses to STEC serotype O157:H7 were not significantly greater than those to the negative control ( $P$  values  $>0.05$ ), and this is consistent with recent observations (48). No differences in the level of adherence of the O157:H7 and O103:H2 strains to bovine ileal mucosa could be detected by immunostaining and confocal microscopy (data not shown).

Enteropathogenic responses to *E. coli* PMK5 were also tested in midileal ligated loops in a 7-day-old gnotobiotic calf. Fluid accumulation was significantly greater in loops injected with PMK5 ( $V/L$ ,  $0.63 \pm 0.04$ ) compared to control loops ( $V/L$ ,  $0.40 \pm 0.03$ ;  $P < 0.05$ ), and the mean neutrophil influx was 12.6-fold greater than in loops injected with sterile medium. The enteropathogenic responses to strain 84-289 were not significantly greater than those to the controls and were not improved by extending the in vivo incubation time to 18 h, by inoculation of loops with mid-logarithmic-phase bacteria grown in tissue culture medium (Dulbecco's modified Eagle's medium) or by inoculating loops constructed in the distal ileum (data not shown).

Microscopic analysis of hematoxylin- and eosin-stained sections of intestinal mucosa from ileal loops inoculated with PMK5 revealed lesions similar to those seen in natural and experimental infection of susceptible calves with STEC (Fig. 2) (7, 8, 29, 46). Subjective analysis of PMK5-infected mucosa indicated slight villus atrophy, with foci of exfoliated or rounded epithelial cells, especially on villus tips, and diffuse infiltration of neutrophils into the lamina propria and submucosa compared with control mucosa. A pseudomembrane containing large numbers of neutrophils was present in the lumen

A.



B.



FIG. 2. Histological analysis of mid-ileal mucosa from ligated loops inoculated with *E. coli* PMK5 (A) or sterile medium (B). Hematoxylin and eosin staining was used. Magnification,  $\times 400$ .

overlying the epithelium (Fig. 2A and 3C), which is consistent with the high  $^{111}\text{In}$  activity detected in the loop contents.

**Enteropathogenic responses to PMK5 *eae*, *tir*, and *stx1* mutants.** Defined mutations were made in the PMK5 *eae*, *tir*, and *stx1* genes by allelic exchange using positive-selection suicide plasmids. Insertions in *eae* and *tir* were shown to result in a lack of intimate attachment to HeLa cells in vitro and absence of ability to nucleate F-actin under sites of bacterial adhesion in FAS tests (Fig. 3A). We were unable to detect intimin in lysates of the PMK5 *eae* mutant by Western blotting using antiserum raised against the conserved domain of intimin (data not shown). A deletion in the gene encoding the Stx1 catalytic A subunit was created by overlapping PCR and shown to abolish cytotoxicity of PMK5 culture supernatants for Vero cells (data not shown). Deletion of *stx1* did not influence the ability of PMK5 to adhere to cultured epithelial cells or the ability to condense F-actin at sites of bacterial attachment (Fig. 3A).

Enteropathogenic responses to the PMK5 and isogenic *eae*, *tir*, and *stx* mutants were tested in triplicate ligated loops in three ca. 28-day-old conventional calves (Fig. 4). To account for interanimal variation, neutrophil influx and the volume of fluid accumulated were expressed as a percentage of the responses to the wild-type strain in the same calf. The *eae*, *tir*, and *stx1* mutations did not significantly impair neutrophil infiltra-

tion or fluid secretion compared to those with wild-type PMK5 (*P* values,  $>0.05$ ).

**Confocal laser scanning microscopy of infected ileal mucosa.** To confirm that the *eae* and *tir* mutations impaired the ability of PMK5 to interact with the bovine intestinal epithelium, sections of ileal mucosa from ligated loops in 28-day-old calves were stained for bacteria and F-actin and examined by confocal microscopy. Relatively few bacteria could be seen in association with the mucosa, even in loops inoculated with the wild-type strain. Figure 3B shows rare microcolonies of wild-type bacteria that were detected on villus tips. No such microcolonies were detected in loops inoculated with the *eae* and *tir* mutants. Figure 3C shows typical fields, in which very few bacteria are associated with the ileal mucosa and most bacteria are associated with neutrophils in the intestinal lumen. Analysis of the luminal infiltrate at high magnification revealed that some, but not all, bacteria were located within neutrophils (data not shown).

## DISCUSSION

We report the use of a ligated ileal loop assay to characterize enteropathogenic responses to STEC in the bovine intestine. An STEC strain isolated from a case of HUS (PMK5; serotype

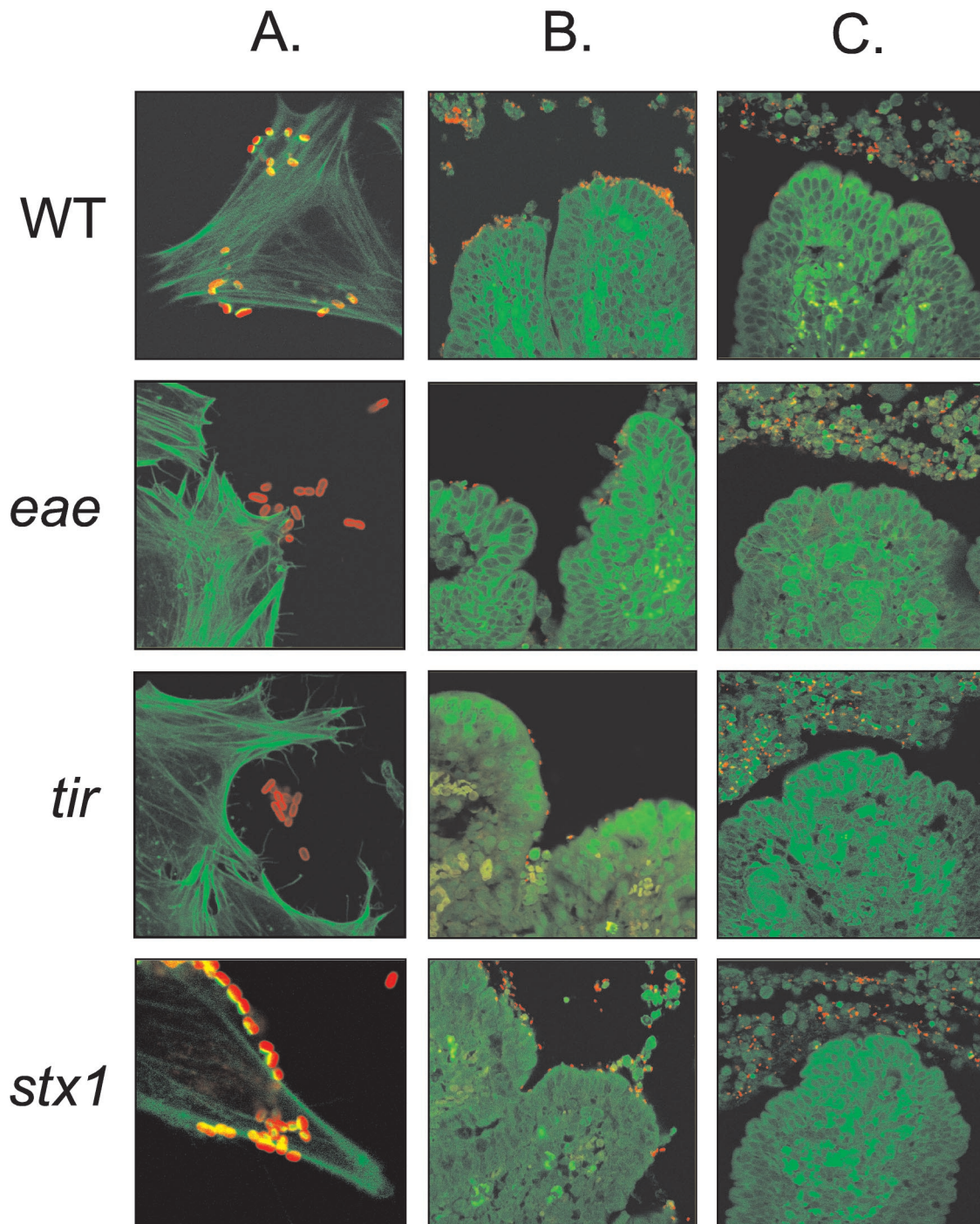


FIG. 3. Confocal laser scanning microscopy showing PMK5 and isogenic *eae*, *tir*, and *stx* mutants interacting with HeLa cells or intestinal mucosa. (A) FAS of HeLa cells incubated with PMK5 and the isogenic mutants indicates that the *eae* and *tir* mutants are incapable of nucleating F-actin under the sites of bacterial adhesion. Magnification,  $\times 1,000$ . (B and C) Sections of mid-ileal mucosa from inoculated loops stained for F-actin and bacteria. The images in column B show rare microcolonies formed by the wild type and the *stx* mutant. Microcolonies were not detected with the *eae* and *tir* mutants; however, small numbers of bacteria could occasionally be seen on the ileal mucosa. Column C contains typical fields showing an almost complete absence of bacteria on the intestinal epithelium and numerous bacteria and neutrophils in the gut lumen. Magnification (B and C),  $\times 630$ . Green, F-actin stained with Oregon green 514-phalloidin; red, bacteria detected with rabbit anti-O103 typing serum and anti-rabbit immunoglobulin-Alexa<sup>568</sup>.

O103:H2) induced significant secretory and inflammatory responses during the 12-h assay. The elevated levels of <sup>111</sup>In activity in the contents and mucosa of PMK5-inoculated loops correlated with the presence of an inflammatory infiltrate sim-

ilar to that seen in calves infected with bovine virulent STEC (29, 46). The recruitment of neutrophils in response to PMK5 appears to be specific, since injection of similar numbers of *E. coli* O157:H7 cells did not induce significant enteropathogenic

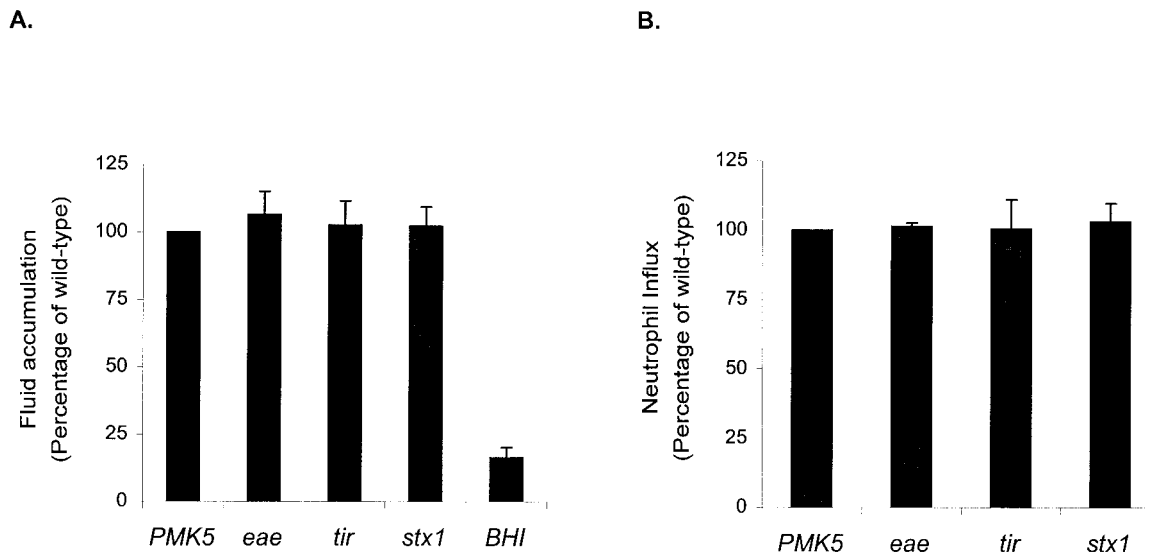


FIG. 4. Enteropathogenic responses to *E. coli* PMK5 and isogenic *eae*, *tir*, and *stx1* mutants in the mid-ileum of ca. 28-day-old conventional calves. (A) Fluid accumulation. To correct for interanimal variation, the mean *V/L* ratio for each mutant strain was expressed as a percentage of the mean *V/L* ratio for the wild type in the same calf. The mean percentage plus SEM from three independent experiments is shown. (B) Neutrophil influx. The total  $^{111}\text{In}$  activity in the contents and mucosa of test loops was corrected for loop length and expressed as a ratio to the activity in negative control loops. Neutrophil influx for the mutant strains was then calculated as a percentage of the influx for the wild type, and the mean of the three experiments plus SEM was derived.

responses. Confocal microscopy of midileal mucosa from PMK5-inoculated loops revealed small foci of bacteria on the intestinal epithelium, similar to those detected by immunohistochemical staining of ileal mucosa from *E. coli* O157:H7-infected neonatal calves (8) and O157:H7-infected ileal loop mucosa (data not shown). These data, combined with observations that STEC colonizes the bovine small intestine in vivo (7, 8, 29) and can induce A/E-lesion formation on bovine distal ileum both in vivo and in vitro (7, 8, 47), indicate that the ligated ileal loop assay is physiologically relevant and can be used to dissect bacterial and host factors influencing enteropathogenic responses.

The absence of enteropathogenic responses to *E. coli* O157:H7 may be explained by the age-related susceptibility of calves to these bacteria (5, 8). *E. coli* O157:H7 has been reported to produce colonic edema and diarrhea only in colostrum-deprived neonatal calves <36 h old (8). Infection of 5-day-old gnotobiotic calves with O157:H7 is asymptomatic (63). The reason PMK5 elicits stronger enteropathogenic responses than *E. coli* O157:H7 in bovine midileal ligated loops remains obscure. A human O103:H2 STEC formed extensive A/E lesions in the colons of gnotobiotic piglets with foci of neutrophils in the lamina propria and lumen (28), and O103:H2 STEC is associated with enteric disease in goats (15); however, to our knowledge the pathogenesis of O103:H2 STEC strains in calves has not been tested. Baker et al. (2) reported considerable variation in the virulence of O157:H7 strains of human and bovine origin in a gnotobiotic-piglet model, and it is possible that PMK5 possesses traits that are absent in the O157:H7 strain tested.

We sought to determine if the enteropathogenic responses to *E. coli* PMK5 required intimin and/or A/E-lesion formation by testing defined *eae* and *tir* mutants in the loop model. In-

timin is required for colonization of colostrum-deprived neonatal calves and piglets by *E. coli* O157:H7, and *eae* null mutants fail to induce enteritis in such animals (7, 14, 39, 59). However in bovine ligated ileal loops, an *eae* mutant of PMK5 induced inflammatory and secretory responses similar to those induced by the wild-type strain. We have reported similar findings from an infant rabbit model of REPEC infection (37). While REPEC O103:H2 intimin is required for colonization of the rabbit intestine and the induction of diarrhea, infiltration of inflammatory cells still occurred in response to a defined *eae* mutant without destroying the brush border or general architecture. Thus, infiltration of neutrophils is probably not sufficient to induce diarrhea in the infant rabbit model. Previous studies using anti-CD18 antibody administered to STEC-infected rabbits had indicated that the host inflammatory response is implicated in the induction of diarrhea (18). Further evidence suggesting that intimin is not essential for induction of the enteropathogenic responses is provided by the finding that *eae*-negative STEC strains are associated with diarrhea in humans (16, 19) and calves (62). In addition, EPEC *eae* is not required for activation of NF- $\kappa$ B in epithelial cells, which in turn initiates transcription of the gene encoding IL-8 (52).

There is evidence for a direct role for intimin in stimulating mucosal inflammatory responses to *C. rodentium* in mice (30). Intimin drives pronounced Th1 immune responses in the murine gut and the purified cell-binding domain of intimin (Int280) augments mitogen-stimulated T-cell proliferation in a concentration-dependent manner (30). The Int280 domain binds not only to Tir but also to  $\beta$ 1 integrins on T cells (23), and it is possible that this triggers signaling events that result in murine colonic hyperplasia. Our results indicate that host- and/or strain-specific differences between the animal models of A/E *E. coli* infections exist and that factors in addition to

intimin are involved in PMK5-induced intestinal inflammatory responses in calves. However, we cannot exclude the possibility that in the intact host intimin facilitates the delivery of factors chemotactic to neutrophils by enabling the bacteria to colonize the intestinal epithelium. The notion that factors encoded outside the LEE may influence STEC pathogenesis is supported by the finding that Stx-minus STEC can impair epithelial barrier function and ion transport in monolayers of T84 cells in the absence of A/E-lesion formation (35).

Mutations in the genes encoding intimin and its translocated receptor did not result in a complete lack of association of PMK5 with the bovine midileal epithelium. Intimin-independent association of STEC with bovine intestinal epithelia has been reported following oral inoculation of one calf with an O157:H7 *eae* mutant (7) and has also been reported in rabbits infected with a REPEC *eae* mutant (34). This indicates that accessory adhesins mediate the binding of STEC to intestinal mucosa. A number of loci have been implicated in the attachment of STEC to epithelial cells, including those for LEE-encoded EspA filaments (17), Efa (42), and Iha (56) and several other genes identified by transposon mutagenesis of *E. coli* O157:H7 (57).

We did not detect any role for Stx1 in the induction of inflammatory responses to PMK5 in calves. The finding that Stx does not influence enteropathogenesis is supported by reports that Stx-negative *E. coli* O157:H7 strains produce diarrhea and colonic edema in neonatal calves (6) and gnotobiotic piglets (60), with no obvious histopathological differences from the Stx-producing parent strain. Pruimboom-Brees et al. recently reported that cattle lack intestinal receptors for Shiga toxin (48) and concluded that this may explain why cattle are more resistant to the enterotoxic effects of Shiga toxin than are rabbits. Indeed, the authors reported that  $10^8$  to  $10^9$  50% cytotoxic doses of purified Stx failed to induce fluid accumulation in calf ligated ileal loops. Our data show that cattle are capable of raising intestinal secretory and inflammatory responses to viable STEC and confirm that Stx1 does not influence the induction of these responses. The possibility remains, however, that Shiga toxins may facilitate STEC colonization and pathogenesis in cattle by inhibiting the activation and proliferation of lymphocytes (20, 40), and this is the subject of ongoing studies. An Stx-producing O157:H7 strain colonized weaned calves better than a nonproducing strain (6); however, the strains used were not isogenic, and differences in colonization may have been due to traits other than Stx production. While *in vitro* evidence supports a role for Stx in neutrophil transmigration and the secretion of proinflammatory cytokines (1, 49, 58), it should be noted that EPEC, which shares many virulence factors with STEC but does not express Shiga toxin, also invokes these changes *in vitro* (51).

The rapid and pronounced infiltration of neutrophils into the lamina propria and gut lumen in response to *E. coli* PMK5 in the bovine midileum, and to other STEC strains following natural and experimental infection, indicates that cell-mediated immunity may be important in controlling STEC in the bovine intestine. The inflammatory response occurs in the absence of large numbers of bacteria on the intestinal epithelium and is not influenced by Stx or the ability of the bacteria to form A/E lesions. We propose to investigate the survival of

STEC exposed to this response and to study the role of bacterial factors in this process.

#### ACKNOWLEDGMENTS

This work was supported by grants from the Biotechnology and Biological Sciences Research Council, United Kingdom (T.S.W., G.F., and A.D.P.; no. 201/D10261) and the European Union (E.U. project number QLK2-2000-00600). O.M. was the recipient of a scholarship from the Ecole Nationale Vétérinaire de Toulouse.

#### REFERENCES

- Acheson, D. W. K., R. Moore, S. De Breucker, L. Lincicome, M. Jacewicz, E. Skutelsky, and G. T. Keusch. 1996. Translocation of Shiga toxin across peripheral intestinal cells in tissue culture. *Infect. Immun.* **64**:3294-3300.
- Baker, D. R., R. A. Moxley, and D. H. Francis. 1997. Variation in virulence in the gnotobiotic pig model of O157:H7 *Escherichia coli* strains of bovine and human origin. *Adv. Exp. Med. Biol.* **412**:53-58.
- Blake, D. C. I., R. G. Russell, E. Santini, T. Bowen, and E. C. Boedeker. 1996. Pro-inflammatory mucosal cytokine responses to Shiga-like toxin-1 (SLT-1), p. 75-82. *In* G. T. Keusch and M. Kawakami (ed.), *Cytokines, cholera and the gut*. IOS Press, Amsterdam, The Netherlands.
- Carlson, G. P., and J. J. Kaneko. 1973. Isolation of leukocytes from bovine peripheral blood. *Proc. Soc. Exp. Biol. Med.* **142**:853-855.
- Cray, W. C., Jr., and H. W. Moon. 1995. Experimental infection of calves and adult cattle with *Escherichia coli* O157:H7. *Appl. Environ. Microbiol.* **61**:1586-1590.
- Dean-Nystrom, E. A., B. T. Bosworth, H. W. Moon, and A. D. O'Brien. 1998. Bovine infection with Shiga toxin-producing *Escherichia coli*, p. 261-267. *In* J. B. Kaper and A. D. O'Brien (ed.), *Escherichia coli* O157:H7 and other Shiga toxin-producing *Escherichia coli*. ASM Press, Washington, D.C.
- Dean-Nystrom, E. A., B. T. Bosworth, H. W. Moon, and A. D. O'Brien. 1998. *Escherichia coli* O157:H7 requires intimin for enteropathogenicity in calves. *Infect. Immun.* **66**:4560-4563.
- Dean-Nystrom, E. A., B. T. Bosworth, W. C. Cray, Jr., and H. W. Moon. 1997. Pathogenicity of *Escherichia coli* O157:H7 in the intestines of neonatal calves. *Infect. Immun.* **65**:1842-1848.
- de Herrero, M., V. de Lorenzo, and K. N. Timmis. 1990. Transposon vectors containing non-antibiotic resistance selection markers for cloning and stable chromosomal insertion of foreign genes in gram-negative bacteria. *J. Bacteriol.* **172**:6557-6567.
- Dennis, M. J., D. C. Davies, and M. N. Hoare. 1976. A simplified apparatus for the microbiological isolation of calves. *Br. Vet. J.* **132**:642-646.
- DeVinney, R., M. Stein, D. Reinscheid, A. Abe, S. Ruschkowski, and B. B. Finlay. 1999. Enterohemorrhagic *Escherichia coli* O157:H7 produces Tir, which is translocated to the host cell membrane but is not tyrosine phosphorylated. *Infect. Immun.* **67**:2389-2398.
- Donnenberg, M. S., and J. B. Kaper. 1991. Construction of an *eaeA* deletion mutant of enteropathogenic *Escherichia coli* by using a positive-selection suicide vector. *Infect. Immun.* **59**:4310-4317.
- Donnenberg, M. S., C. O. Tacket, S. P. James, G. Losonsky, J. P. Nataro, S. S. Wasserman, J. B. Kaper, and M. M. Levine. 1993. Role of the *eaeA* gene in experimental enteropathogenic *Escherichia coli* infection. *J. Clin. Invest.* **92**:1412-1417.
- Donnenberg, M. S., S. S. Tzipori, M. L. McKee, A. D. O'Brien, J. Alroy, and J. B. Kaper. 1993. Role of the *eae* gene of enterohaemorrhagic *Escherichia coli* in intimate attachment *in vitro* and in a porcine model. *J. Clin. Invest.* **92**:1418-1424.
- Duhamel, G. E., R. A. Moxley, C. W. Maddox, and E. D. Erickson. 1992. Enteric infection of a goat with enterohemorrhagic *Escherichia coli* (O103:H2). *J. Vet. Diagn. Investig.* **4**:197-200.
- Dytoc, M. T., A. Ismaili, D. J. Philpott, R. Soni, J. L. Brunton, and P. M. Sherman. 1994. Distinct binding properties of *eaeA*-negative verocytotoxin-producing *Escherichia coli* of serotype O113:H21. *Infect. Immun.* **62**:3494-3505.
- Ebel, F., T. Podzadel, M. Rohde, A. U. Kresse, S. Krämer, C. Deibel, C. A. Guzmán, and T. Chakraborty. 1998. Initial binding of Shiga toxin-producing *Escherichia coli* to host cells and subsequent induction of actin rearrangements depend on filamentous EspA-containing surface appendages. *Mol. Microbiol.* **30**:147-161.
- Elliott, E., Z. Li, C. Bell, D. Stiel, A. Buret, J. Wallace, I. Brzuszczyk, and E. O'Loughlin. 1994. Modulation of host response to *Escherichia coli* O157:H7 infection by anti-CD18 antibody in rabbits. *Gastroenterology* **106**:1554-1561.
- Feng, P., S. D. Weagant, and S. R. Monday. 2001. Genetic analysis for virulence factors in *Escherichia coli* O104:H21 that was implicated in an outbreak of hemorrhagic colitis. *J. Clin. Microbiol.* **39**:24-28.
- Ferens, W. A., and C. J. Hovde. 2000. Antiviral activity of Shiga toxin 1: suppression of bovine leukemia virus-related spontaneous lymphocyte proliferation. *Infect. Immun.* **68**:4462-4469.
- Ferreira, A. J. P., W. P. Elias, Jr., J. S. Pelayo, R. Giraldi, M. Z. Pedroso, and



- I. C. A. Scaletsky. 1998. Culture supernatants of Shiga toxin-producing *Escherichia coli* strains provoke fluid accumulation in rabbit ileal loops. *FEMS Immun. Med. Microbiol.* **19**:285–288.
22. Frankel, G., A. D. Phillips, L. Rosenshine, G. Dougan, J. B. Kaper, and S. Knutton. 1998. Enteropathogenic and enterohaemorrhagic *Escherichia coli*: more subversive elements. *Mol. Microbiol.* **30**:911–921.
23. Frankel, G., O. Lider, R. Hershkovitz, A. P. Mould, S. G. Kachalsky, D. C. A. Candy, L. Cahalon, M. J. Humphries, and G. Dougan. 1996. The cell-binding domain of intimin from enteropathogenic *Escherichia coli* binds to beta1 integrins. *J. Biol. Chem.* **271**:20359–20364.
24. Galán, J. E., C. Ginocchio, and P. Costeas. 1992. Molecular and functional characterization of the *Salmonella* invasion gene *invA*: homology of InvA to members of a new protein family. *J. Bacteriol.* **174**:4338–4349.
25. Gansheroff, L. J., and A. D. O'Brien. 2000. *Escherichia coli* O157:H7 in beef cattle presented for slaughter in the U.S.: higher prevalence rates than previously estimated. *Proc. Natl. Acad. Sci. USA* **97**:2959–2961.
26. Griffin, P. M. 1995. *Escherichia coli* O157:H7 and other enterohaemorrhagic *Escherichia coli*, p. 739–761. In M. J. Blaser, P. D. Smith, J. I. Ravdin, H. B. Greenberg, and R. L. Guerrant (ed.), *Infections of the gastrointestinal tract*. Raven Press, New York, N.Y.
27. Griffin, P. M., L. C. Olmstead, and R. E. Petras. 1990. *Escherichia coli* O157:H7-associated colitis. A clinical and histological study of 11 cases. *Gastroenterology* **99**:142–149.
28. Hall, G. A., C. R. Dorn, N. Chanter, S. M. Scotland, H. R. Smith, and B. Rowe. 1990. Attaching and effacing lesions *in vivo* and adhesion to tissue culture cells of vero-cytotoxin-producing *Escherichia coli* belonging to serogroups O5 and O103. *J. Gen. Microbiol.* **136**:779–786.
29. Hall, G. A., D. J. Reynolds, N. Chanter, J. H. Morgan, K. R. Parsons, T. G. Debney, A. P. Bland, and J. C. Bridger. 1985. Dysentery caused by *Escherichia coli* (S102–9) in calves: natural and experimental disease. *Vet. Pathol.* **22**:156–163.
30. Higgins, L. M., G. Frankel, I. Connerton, N. S. Goncalves, G. Dougan, and T. T. MacDonald. 1999. Role of bacterial intimin in colonic hyperplasia and inflammation. *Science* **285**:588–591.
31. Horton, R. M., H. D. Hunt, S. N. Ho, J. K. Pullen, and L. R. Pease. 1989. Engineering hybrid genes without the use of restriction enzymes: gene splicing by overlap extension. *Gene* **77**:61–68.
32. Kaniga, K., I. Delor, and G. R. Cornelis. 1991. A wide-host range suicide vector for improving reverse genetics in gram-negative bacteria: inactivation of the *blaA* gene of *Yersinia enterocolitica*. *Gene* **109**:137–141.
33. Knutton, S., T. Baldwin, P. H. Williams, and A. S. McNeish. 1989. Actin accumulation at sites of bacterial adhesion to tissue culture cells: basis of a new diagnostic test for enteropathogenic and enterohaemorrhagic *Escherichia coli*. *Infect. Immun.* **57**:1290–1298.
34. Krejany, E. O., T. H. Grant, V. Bennett-Wood, L. M. Adams, and R. M. Robins-Browne. 2000. Contribution of plasmid-encoded fimbriae and intimin to capacity of rabbit-specific enteropathogenic *Escherichia coli* to attach to and colonize rabbit intestine. *Infect. Immun.* **68**:6472–6477.
35. Li, Z., E. Elliott, J. Payne, J. Isaacs, P. Gunning, and E. V. O'Loughlin. 1999. Shiga toxin-producing *Escherichia coli* can impair T84 cell structure and function without inducing attaching/effacing lesions. *Infect. Immun.* **67**:5938–5945.
36. Mainil, J. 1999. Shiga/verocytotoxins and Shiga/verotoxigenic *Escherichia coli* in animals. *Vet. Res.* **30**:235–257.
37. Marchès, O., J.-P. Nougayrède, S. Boullier, J. Mainil, G. Charlier, I. Raymond, P. Pohl, M. Boury, J. De Rycke, A. Milon, and E. Oswald. 2000. Role of Tir and intimin in the virulence of rabbit enteropathogenic *Escherichia coli* serotype O103:H2. *Infect. Immun.* **68**:2171–2182.
38. Mariani-Kurkdjian, M., E. Denamur, A. Milon, B. Picard, H. Cave, N. Lambert-Zechovsky, C. Loirat, P. Goullet, P. J. Sansonetti, and J. Elion. 1993. Identification of a clone of *Escherichia coli* O103:H2 as a potential agent of hemolytic-uremic syndrome in France. *J. Clin. Microbiol.* **31**:296–301.
39. McKee, M. L., A. R. Melton-Celsa, R. A. Moxley, D. H. Francis, and A. D. O'Brien. 1995. Enterohaemorrhagic *Escherichia coli* O157:H7 requires intimin to colonize the gnotobiotic pig intestine and to adhere to HEp-2 cells. *Infect. Immun.* **63**:3739–3744.
40. Menge, C., L. H. Wieler, T. Schlapp, and G. Baljer. 1999. Shiga toxin 1 from *Escherichia coli* blocks activation and proliferation of bovine lymphocyte subpopulations *in vitro*. *Infect. Immun.* **67**:2209–2217.
41. Nataro, J. P., and J. B. Kaper. 1998. Diarrheagenic *Escherichia coli*. *Clin. Microbiol. Rev.* **11**:142–201.
42. Nicholls, L., T. H. Grant, and R. M. Robins-Browne. 2000. Identification of a novel genetic locus that is required for *in vitro* adhesion of a clinical isolate of enterohaemorrhagic *Escherichia coli* to epithelial cells. *Mol. Microbiol.* **35**:275–288.
43. Oswald, E., H. Schmidt, S. Morabito, H. Karch, O. Marchès, and A. Caprioli. 2000. Typing of intimin genes in human and animal enterohaemorrhagic and enteropathogenic *Escherichia coli*: characterization of a new intimin variant. *Infect. Immun.* **68**:64–71.
44. Pai, C. H., J. K. Kelly, and G. L. Meyers. 1986. Experimental infection of infant rabbits with verotoxin-producing *Escherichia coli*. *Infect. Immun.* **51**:16–23.
45. Paton, J. C., and A. W. Paton. 1998. Pathogenesis and diagnosis of Shiga-toxin producing *Escherichia coli* infections. *Clin. Microbiol. Rev.* **11**:450–479.
46. Pearson, G. R., K. J. Bazeley, J. R. Jones, R. F. Gunning, M. J. Green, A. Cookson, and M. J. Woodward. 1999. Attaching and effacing lesions in the large intestine of an eight-month-old heifer associated with *Escherichia coli* O26 infection in a group of animals with dysentery. *Vet. Rec.* **145**:370–373.
47. Phillips, A. D., S. Navabpour, S. Hicks, G. Dougan, T. Wallis, and G. Frankel. 2000. Enterohaemorrhagic *Escherichia coli* O157:H7 target Peyer's patches in humans and cause attaching/effacing lesions in both human and bovine intestine. *Gut* **47**:377–381.
48. Pruijboom-Brees, I. M., T. W. Morgan, M. R. Ackermann, E. D. Nystrom, J. E. Samuel, N. A. Cornick, and H. W. Moon. 2000. Cattle lack vascular receptors for *Escherichia coli* O157:H7 Shiga toxins. *Proc. Natl. Acad. Sci. USA* **97**:10325–10329.
49. Sakiri, R., B. Ramegowda, and V. L. Tesh. 1998. Shiga toxin type 1 activates tumor necrosis factor- $\alpha$  gene transcription and nuclear translocation of the transcriptional activators nuclear factor- $\kappa$ B and activator protein-1. *Blood* **92**:558–566.
50. Sambrook, J., E. F. Fritsch, and T. Maniatis. 1989. *Molecular cloning: a laboratory manual*, 2nd ed. Cold Spring Harbor Laboratory Press, Cold Spring Harbor, N.Y.
51. Savkovic, S. D., A. Koutsouris, and G. Hecht. 1997. Attachment of a non-invasive enteric pathogen, enteropathogenic *Escherichia coli*, to cultured human intestinal epithelial monolayers induces transmigration of neutrophils. *Infect. Immun.* **64**:4480–4487.
52. Savkovic, S. D., A. Koutsouris, and G. Hecht. 1997. Activation of NF- $\kappa$ B in intestinal epithelial cells by enteropathogenic *Escherichia coli*. *Am. J. Physiol.* **273**:C1160–C1167.
53. Schauer, D. B., and S. Falkow. 1993. The *eae* gene of *Citrobacter freundii* biotype 4280 is necessary for colonization in transmissible murine colonic hyperplasia. *Infect. Immun.* **61**:4654–4661.
54. Simon, R., U. Preifer, and A. Puhler. 1983. A broad host range mobilisation system for *in vivo* genetic engineering: transposon mutagenesis in Gram-negative bacteria. *Bio/Technology* **1**:784–791.
55. Slutsker, L., A. A. Ries, K. D. Greene, J. G. Wells, L. Hutwagner, and P. M. Griffin. 1997. *Escherichia coli* O157:H7 diarrhea in the United States: clinical and epidemiological features. *Ann. Intern. Med.* **126**:505–513.
56. Tarr, P. I., S. S. Bilge, J. C. Vary, Jr., S. Jelacic, R. L. Habeeb, T. R. Ward, M. R. Baylor, and T. E. Besser. 2000. *Iha*: a novel *Escherichia coli* O157:H7 adherence-conferring molecule encoded on a recently acquired chromosomal island of conserved structure. *Infect. Immun.* **68**:1400–1407.
57. Tatsuno, I., H. Kimura, A. Okutani, K. Kanamaru, H. Abe, S. Nagai, K. Makino, H. Shinagawa, M. Yoshida, K. Sato, J. Nakamoto, T. Tobe, and C. Sasakawa. 2000. Isolation and characterization of mini-Tn 5K<sub>m2</sub> insertion mutants of enterohaemorrhagic *Escherichia coli* O157:H7 deficient in adherence to Caco-2 cells. *Infect. Immun.* **68**:5943–5952.
58. Thorpe, C. M., B. P. Hurley, L. L. Lincicome, M. S. Jacewicz, G. T. Keusch, and D. W. K. Acheson. 1999. Shiga toxins stimulate secretion of interleukin-8 from intestinal epithelial cells. *Infect. Immun.* **67**:5985–5993.
59. Tzipori, S., F. Gunzer, M. S. Donnenberg, L. de Montigny, J. B. Kaper, and A. Donohue-Rolfe. 1995. The role of the *eaeA* gene in diarrhea and neurological complications in a gnotobiotic piglet model of enterohaemorrhagic *Escherichia coli* infection. *Infect. Immun.* **63**:3621–3627.
60. Tzipori, S., H. Karch, K. I. Wachsmuth, R. M. Robins-Browne, A. D. O'Brien, H. Lior, M. L. Cohen, J. Smithers, and M. M. Levine. 1987. Role of a 60-megadalton plasmid and Shiga-like toxins in the pathogenesis of infection caused by enterohaemorrhagic *Escherichia coli* O157:H7 in gnotobiotic piglets. *Infect. Immun.* **55**:3117–3125.
61. Wallis, T. S., S. M. Paulin, J. S. Plested, P. R. Watson, and P. W. Jones. 1995. *The Salmonella dublin* virulence plasmid mediates systemic but not enteric effects of salmonellosis in cattle. *Infect. Immun.* **63**:2755–2761.
62. Wieler, L. H., E. Vieler, C. Erpenstein, T. Schlapp, H. Steinrück, R. Bauerfeind, A. Byomi, and G. Baljer. 1996. Shiga toxin-producing *Escherichia coli* strains from bovines: association of adhesion with carriage of *eae* and other genes. *J. Clin. Microbiol.* **34**:2980–2984.
63. Woodward, M. J., D. Gavier-Widen, I. M. McLaren, C. Wray, M. Sozmen, and G. R. Pearson. 1999. Infection of gnotobiotic calves with *Escherichia coli* O157:H7 strain A84. *Vet. Rec.* **144**:466–470.