



# THE UNIVERSITY *of* EDINBURGH

## Edinburgh Research Explorer

### **Savanna burning and the assessment of long-term fire experiments with particular reference to Zimbabwe**

**Citation for published version:**

Furley, PA, Rees, RM, Ryan, CM & Saiz, G 2008, 'Savanna burning and the assessment of long-term fire experiments with particular reference to Zimbabwe' *Progress in Physical Geography*, vol. 32, no. 6, pp. 611-634. DOI: 10.1177/0309133308101383

**Digital Object Identifier (DOI):**

[10.1177/0309133308101383](https://doi.org/10.1177/0309133308101383)

**Link:**

[Link to publication record in Edinburgh Research Explorer](#)

**Document Version:**

Peer reviewed version

**Published In:**

*Progress in Physical Geography*

**General rights**

Copyright for the publications made accessible via the Edinburgh Research Explorer is retained by the author(s) and / or other copyright owners and it is a condition of accessing these publications that users recognise and abide by the legal requirements associated with these rights.

**Take down policy**

The University of Edinburgh has made every reasonable effort to ensure that Edinburgh Research Explorer content complies with UK legislation. If you believe that the public display of this file breaches copyright please contact [openaccess@ed.ac.uk](mailto:openaccess@ed.ac.uk) providing details, and we will remove access to the work immediately and investigate your claim.



# Savanna burning and the assessment of long-term fire experiments with particular reference to Zimbabwe

Peter A. Furley<sup>1</sup> Robert M. Rees<sup>2</sup> Casey M. Ryan<sup>1</sup> and Gustavo Saiz<sup>3</sup>

<sup>1</sup> School of GeoScience, University of Edinburgh

<sup>2</sup> Scottish Agricultural College, Edinburgh

<sup>3</sup> School of Geography & Geosciences, University of St. Andrews

**Abstract:** Long-term fire experiments in savannas are rare, given the difficulties and demands of operation. Controlled fire experiments date from colonial times in West Africa, although the largest and best-known is located in the Kruger National Park, South Africa. The achievements of these experiments are assessed from examples in Africa, South America and Australia. A less well-known experiment in Zimbabwe was sited at the Marondera Grassland Research Station and ran from 1953 to 1991. Some of the preliminary results on the impact of fire on vegetation are analysed and compared with further vegetation surveys in 2007. Studies on tree growth in this *miombo* savanna woodland indicate that the plots burned at 3 and 4-year intervals recovered to greater mean heights than the unburned control plots. There was no significant variation between treatments, suggesting that the few trees that did survive in the frequently burned plots were large specimens. *Brachystegia* and *Julbernardia* dominated the plots throughout and after the experiment. Basal area and stocking density were highest in the 4-yearly burned plots but there was a high variability throughout the experiment, suggesting that many trees may have attained heights and bark thicknesses sufficient to protect from fire damage. Fire also affected the composition of the herbaceous plant community, but not the number of species. By the end of the experiment some grass and sedge species had flourished whilst others revealed greater susceptibility to fire, and fire-tolerant species predominated in the most frequently burned areas. The experimental design appeared to cope well with the variability between plots and indicated the soundness of the initial design and its implementation.

**Key words:** Fire experiments; savanna woodlands; *miombo*; Zimbabwe; Marondera

## I. Introduction

Tropical savannas are characterised by a co-dominance of trees, shrubs and herbaceous plants, whose proportions are determined by environmental, ecological and human parameters and fashioned by fire. Savanna vegetation is typically fire-adapted and resilient. Nevertheless, the frequency and intensity of fires affects vegetation structure and many of its constituent and associated characteristics, presenting major problems for ecosystem assessment and resource management (Bond *et al.*, 2005; Bond and Keeley, 2005; Bowman and Franklin, 2005; Van Langevelde *et al.*, 2003; Bond and Van Wilgen, 1996; Braithwaite, 1996; Lonsdale and Braithwaite, 1991; Frost and Robertson, 1987). Recent developments in spatial data acquisition from remote sensing, and handling within GIS, have provided more accurate information on the incidence, frequency and impact of fires (e.g. Schroeder *et al.*, 2008, 2005; Chongo *et al.*, 2007; Verbesselt *et al.*, 2007; Lentile *et al.*, 2006; Palacios-Orueta *et al.*, 2005,2004). The ability to observe fires from airborne and satellite sensors has been a catalyst in stimulating interest in the role of biomass burning particularly in the tropics. Satellite images, linked to models, reveal that in Africa over 2.6 million km<sup>2</sup> of savanna burn every year, contributing 48% of global pyrogenic CO<sub>2</sub> emissions, albeit with a high estimated error (Schultz *et al.*, 2008).

Numerous experiments and models of savanna burning have been developed in order to understand the nature and impact of fires, although relatively few have been

maintained for a long period or have been sufficiently replicated to give a consistent picture (Bond and Van Wilgen, 2005). In any case it has proved difficult to include all possible variables in field experiments that might influence burning, and therefore all controlled experiments are to some degree distant from the reality of highly varied wildfire events.

Field experiments manipulating burning episodes vary greatly in rigour but have been assayed for well over half a century. Four main groups of objectives can be extracted from the literature: i. many of the early experiments were carried out in savanna woodlands or tropical forests with the aim of assessing the effects of slash and burn agriculture or clearance on the environment; ii. field experiments were established to analyse the effects of burning or various forms of management for grazing; iii. several long term experiments were set up by colonial regimes to test the impact of fire frequencies or timing on vegetation, mostly to improve management; iv. wider environmental concerns have more recently been addressed particularly, such as biomass change, carbon emissions and sequestration, as well as particulate and other gas fluxes.

The present objective is to assess the information from global fire experiments with particular reference to the impact of long term fire trials on vegetation, and to illustrate the inherent concepts in a long-term fire experiment in Zimbabwe.

## **II. Savanna fire experiments: a global perspective**

Observations of the effects of fire on vegetation have been published since early colonial experiments in Africa (see Aubreville, 1947). The experiments that were established then form some of the longest running ecological experiments in the world. However, with some exceptions in richer countries, they have been little reported in the scientific literature and their results have rarely been synthesised. This is despite an upsurge of interest in the biogeochemistry of biomass burning and in the role of fire in the earth system (such as the NASA/ University of Maryland Fire Information for Resource Management System FIRMS; the Australian SENTINEL system for mapping fires; SAFARI, the Southern Africa Fire Atmosphere Research Initiative and SavFIRE (Savanna Fire Ignition Research Experiment)). However, there are numerous difficulties in designing and operating such experiments, particularly when continued over decades where the aims may change over time, where there are funding difficulties, and where there are problems in carrying through the experiments consistently with sufficient replication (Vogl, 1974). There have been several other serious criticisms of some burning trials, relating to the lack of an initial sound protocol and the inevitability of a rigid design. The experimental plots have often been relatively small in relation to the area represented (to permit adequate control), contrived (since wildfires are frequently spontaneous and irregular), and artificial (in the sense that they try to simplify conditions whereas the reality is a heterogeneous ecosystem). The experimental conditions may also be considered untypical of the areas outside the fire trials. Sometimes the documentation of the pre-fire conditions has been shown to be inadequate and there is frequently a lack of supporting environmental and ecological information (such as soils and drainage, rainfall and seasonality, phenology, herbivory or the ecological context beyond the experimental boundaries; see Sankaran *et al.*, 2008). Despite these criticisms, a great deal of valuable information has been derived from past experiments, especially from an

ecological and biogeographical perspective, providing a test bed for ideas as well as fundamental data on the effects of burning (Van Wilgen *et al.*, 2007; Higgins *et al.*, 2007).

Not only have fire trials have been conducted for diverse reasons, but the original objectives have often been added to or modified over time. For example, some experiments designed to test the effects of burning on bush encroachment for pasture research have later been utilised to study changing vegetation structure and plant composition. The development of concepts on savanna heterogeneity (such as non-equilibrium theory, patch mosaics and theories on the dynamics of tree-grass co-existence), has frequently drawn on the data from existing field experiments. Early controlled experiments were carried out in West Africa and were established by colonial regimes in many countries in East and Southern Africa, with the largest and best documented study located in the Kruger National Park. Other well documented studies have been published in Australia, notably in the Kakadu National Park; in the Brazilian *cerrados* (Projeto Fogo, administered by the environment agency, IBAMA, and earlier studies); and in the Venezuelan/Colombian *llanos*.

When controlled field experiments were first initiated, fires were generally perceived as detrimental leading to land degradation (see the summary of ideas in Laris and Wardell, 2006). They have long been seen as instrumental in influencing forest-savanna boundaries (Müller *et al.*, 2007; Hoffman *et al.*, 2003; Fensham *et al.*, 2003; Furley *et al.*, 1992). Aubreville's pioneer experiments in West Africa in the 1930s influenced a succession of later African studies (such as Rose -Innes, 1971; Charter & Keay, 1960 and Hopkins, 1965 at Olokomeji, Nigeria; Ramsay & Rose-Innes, 1963; Brookman-Amusah *et al.*, 1980; Swaine, 1992 and Swaine *et al.*, 1992 in Ghana; Trapnell, 1959 and Lawton, 1978 in what was then Northern Rhodesia, and later the work of Chidumayo and his associates (1997, 1996, 1988); Nangendo *et al.*, 2005 in the Murchison Falls National Park; Eldroma, 1984, in the Queen Elizabeth National Park, Uganda; Van de Vijver *et al.*, 1999 and Ferguson, 1998 in Tanzania). The results, also confirmed in other parts of the world, tended to show that over time, fires (especially late dry season), created a landscape with fewer trees and larger expanses of grassland, whilst fire suppression promoted a reverse trend (later substantiated by work such as Menault and Cesar, 1982 and Loupe, 1995 in Ivory Coast). Research since the 1960s has indicated a growing awareness and understanding of the complexity and dynamics of the savanna biome, and has included a multitude of environmental and human variables in process models. For example, savanna woodland diversity and structure has been shown to reflect combinations of factors such as prescribed fire along with grazing and termite activity (eg Traore *et al.*, 2008 in Burkina Faso), and seed germination (Gashaw and Michelsen, 2002 in Ethiopia), or numerous publications on fire and elephant interactions (eg Lock, 1977). More detailed ecological parameters have included different timing of burns, different fire intensities and irregular fire behaviour patterns. While the early research concentrated on the impact of fires on the environment, more recent studies have also concentrated on managing fire regimes for grazing (eg Savadogo *et al.*, 2007), for wildlife and conservation, and on designing improved fire policy (Whitehead *et al.*, 2005; Dyer and Smith 2003; Bond and Archibald, 2003; Dyer *et al.*, 2001).

## 1. Fire experimentation in northern Australia

Australian savannas occur at the drier end of the savanna spectrum with frequent fires and woody plants characterised by eucalyptus. The emphasis of research into fire impact and management has been predominantly in northern Australia (Bradstock *et al.*, 2002). An overview of fire experiments in the 2m km<sup>-2</sup> of tropical savanna is given in Williams (R.J) *et al.* (2003), and there are numerous research sites and studies reflected in published literature and in reports from the research stations. Controlled experiments of international significance have been sited at Munmarlarly, Kidman Springs and the well known Kapalga sites in the Kakadu National Park. Munmarlarly ran from 1973 to 1996 in a eucalypt-dominated savanna woodland, with 4 replicated 1-ha plots designed to investigate the interactions between fire, landscape and biodiversity. Lonsdale and Braithwaite (1991) in a statistical analysis of earlier studies concluded that the different fire regimes resulted in negligible changes in the vegetation, suggesting long term stability. In a later detailed assessment, Russell-Smith *et al.* (2003a) explored relationships between fire regimes and savanna responses, and detailed the variations between the types of woodland savanna, different timings for burning and associated effects on some soil properties. Frequent burns at low or moderate intensities produced a structurally stable system, though the authors suggest that no matter how rigorous the fire plot design, the results are limited for fire management purposes in view of the idiosyncratic nature of natural fire regimes over multiple temporal and spatial scales. The Kidman Springs experiment examined the productivity and composition of the herbaceous layer in an effort to better inform pasture management. The Kapalga experiment in the Kakadu National Park ran from 1989 to 1995 with a range of fire treatments similar to those at Munmarlarly but with very large plots of 10-20km<sup>2</sup> in sub-catchments and can claim to be the world's largest fire experiment. There have been numerous published studies from Kapalga and the wider National Park, covering a gamut of ecological and environmental issues (see for instance Edwards *et al.*, 2003 looking at fire regimes and biodiversity; Price *et al.*, 2005, studying fire heterogeneity; Prior *et al.*, 2006 examining the biotic and abiotic factors influencing tree growth rates); Liedloff *et al.*, 2001 who modelled fire and grazing interactions). The well documented results from Kapalga are summarised in the book by Andersen *et al.* (2003) and subsequent articles (e.g. Andersen *et al.*, 2005). The main results showed that, with the exception of riparian vegetation and associated streams and also small mammal populations, much of the savanna biota showed little or no response to burning, even with the most extreme fire regimes and is therefore extremely resilient to fire. Where fire did have a marked effect it was felt between burnt and unburnt areas rather than high versus low intensity fires and this emphasised the importance of analysing fire frequencies.

Less well known Australian studies were sited in the Bowling Green bay National Park near Townsville, Queensland (Williams, P.R *et al.*, 2003a), where 3 fire regimes were studied between 1997 and 2001 over an area of 10ha. The abundance of most species was stable irrespective of the fire regime although several sub-shrubs, ephemeral and perennial forbs and grasses did increase in abundance particularly following late season fires. The density of trees increased markedly in the absence of fire for 4 years. Fire patterns and frequencies were compared over a 4-year period by satellite imagery for two areas in northern Queensland by Felderhof and Gillieson (2006), where the Mount Isa area in semi-arid conditions showed patterns and frequencies similar to those reported elsewhere in arid parts of Australia, whereas the Cape York Peninsula more closely resembled more mesic savannas. At the Bradshaw research station (NT) Gill *et al.* (2003) also examined fire and patchiness. Other

studies have looked at the depth of fire penetration into the ground (Williams, PR, 2004), fire effects on seedbanks and seedlings (Radford *et al.*, 2001; burning and the breaking of seed dormancy (Williams, PR *et al.*, 2003a,b); alien grass invasions (a major topic elsewhere as in Brazil) (Rossiter, 2003); important contributions to the debates on fire and productivity (e.g. Beringer *et al.*, 2007; Bennet *et al.*, 2003); or the long history of fires in Australia and the role of the aboriginal activities (Bowman *et al.*, 2004; Bowman and Prior, 2004; Russell-Smith *et al.*, 2003b; Preece, 2002). There are also valuable accounts of fire impacts on wildlife which cannot be covered in this assessment but are summarised in publications such as Whitehead *et al.* (2005) or Woinarski *et al.*, (2004).

## 2. Fire experimentation in southern Africa

Fire has always been to the forefront in consideration of African savannas (eg Booyson and Tainton, 1984). In southern Africa, the research carried out in the Kruger National Park stands out in terms of its large scale, high level of replication, long-term studies and the extensive range of associated botanical, wildlife and environmental concerns (over 70 publications on different aspects of the research). As Higgins *et al.* (2007) have commented, few long-term data sets are available anywhere to document the extent to which fire can structure savannas. The Kruger research provides invaluable information on fire impacts and also offers a yardstick of comparison for the neighbouring Zimbabwe experiments described later. The National Park at Kruger was established in 1926 and the long-term, plot-based fire experiment started in 1954 in order to provide a scientific basis for fire management. The large area covers a range of rainfall from 350mm in the north to 750mm in the south with extended wet and dry periods significantly affecting fire occurrence, principally through the combustible fuel load (Van Wilgen *et al.*, 2003). Four representative woody savannas are dominated by *Acacia nigrescens* and *Colophospermum mopane* over basaltic soils, *Terminalia sericea* and *Combretum* spp. on granite soils. Natural fires typically break out in the late dry season with a mean fire return interval (1941-96) of 4.5 years. The fire experiments comprised burns at varying return intervals and seasons in a series of 7ha plots in the 4 types of savanna vegetation. The plots have been open to wildlife grazing and it has been suggested that this may have influenced some of the results. A valuable overview is presented in du Toit *et al.* (2003) and useful evaluative commentaries are given in Higgins *et al.* (2007) and Woods *et al.*, 2002. Van Wilgen *et al.* (2007), give a helpful summary table of fire effects on vegetation, wildlife and a number of environmental properties. As far as the effects of fire on woody plants is concerned, the key findings were that fire frequency, fire season and complete exclusion from burning did not affect the size of tree populations and that there was no decrease in tree density with increasing fire frequency. This apparently unlikely result was attributed to the ability of the woody (and other species) to re-sprout from the base and immediate sub-surface. Re-sprouting increased with fire intensity, which scorched aerial parts of the trees (Nefabas and Gambiza, 2007; Kennedy and Potgieter, 2003; Bond and Midgely, 2001; Trollope *et al.*, 1995, Trollope, 1984, 1982). While constant fires lowered the size of individual species they rarely killed them. Nevertheless fire had significant effects on the size, structure and biomass of the tree populations, and studies on fire intensity reveal the interaction of numerous controlling factors particularly seasonality (influencing fuel moisture) and past fire frequency (Govender *et al.*, 2006). Enslin *et al.* (2000) and Shackleton and Scholes (2000) showed that while there had been no significant changes in woody species from 1954 to 1998, density decreased on

biennial but increased on triennial treatments. Control plots where fire was excluded often had dominant larger trees, whereas the fire-affected plots possessed numerous stunted individuals. The influence of fire exclusion was more obvious in areas of higher rainfall resulting in higher biomass figures. The timing of the fire season was also significant (Govender *et al.*, 2006) with intensities being lower in summer and highest in the winter fires, though intensities did not vary between annual, biennial triennial or quadrennial intervals.

As far as the impact of fires on the herbaceous components is concerned, current research appears to indicate that fires in the dormant season have little effect on community composition, but wet season fire and fire exclusion does have a significant effect (Van Wilgen *et al.*, 2007). Fire is known to be important in influencing herbaceous plant communities in savanna woodlands, particularly where there are effects on the seasonal availability of water (Chidumayo, 1997). Post-fire succession in the Okavango, Botswana was shown to be a reflection of the plant species characteristics, the seedbank and plant mobility in early successional stages and by competition and niche differentiation at later stages (Heinl *et al.*, 2007). After 50 years of burning, grass species richness at Kruger was greatest where fire was excluded or burnt during the wet growing season - again more marked in areas of higher rainfall (Van Wilgen *et al.*, 2007). These findings suggest that in the Kruger experiment the manipulation of fire regimes is not critical for the maintenance of diversity in the herbaceous component. In a similar vein, Hudak *et al.* (2004) concluded that increased fire occurrence promoted landscape heterogeneity whilst fire exclusion did not. Mycorrhizae and root architecture are believed to be strongly affected by fire (Hartnett *et al.* 2004) and the extensive mycorrhizal network underpinning savanna vegetation, particularly in low nutrient conditions, represents a valuable strategy for maximising resources under stress and disturbance.

### 3. Fire experimentation in South America

South and Central American savannas are amongst the most humid of global savannas and tend to occur over highly weathered, infertile soils. Work on long term fire experiments in savannas of South America has been mostly conducted in Brazil and to a lesser extent in Venezuela (Miranda *et al.*, 2002; San Jose 1991, 1997; Mistry, 1988). One of the best known long-standing fire experiments is located at the Ecological Reserve of the Brazilian Institute of Geography and Statistics (IBGE) and in the adjacent University Agua Limpa Reserve near Brasilia. This IBGE Reserve has sections that have been protected from fire since 1972, and contains an array of study plots established on different *cerrado* physiognomies that are subjected to different fire regimes (Santos *et al.*, 2003). There are even older fire experiments set up in Brazilian Cerrados (Coutinho, 1982, 1990), although they do not present rigorous information on the initial environmental conditions before the trials commenced (Moreira, 2000). More recently, work has been conducted both on the changes in structure and composition on a fire-protected cerrado *sensu stricto* in NE Brazil (Roitman *et al.*, 2008), and on the interaction between of soil and vegetation under different fire frequencies in study sites located in the Emas National Park (Silva and Batalha, 2008). Research on the impact of exclusion of fires on savanna vegetation in Venezuela has been conducted since 1960 at the Llanos Biological Station in the central part of the country and has been the subject of long-term monitoring as shown in successive studies published by San Jose and Fariñas (1983, 1991). Research in this

region was subsequently extended with a view of studying the impact of various regimes of land use and fire frequency on the ecosystem (Silva *et al.*, 2001).

A common pattern observed in all the studies mentioned above is that of the increases in density of woody species in *cerrado* sites protected from fire. Moreira (2000) conducted research at the IBGE Ecological Reserve comparing five different savanna physiognomies that were burnt every 2 years to other five savanna counterparts that were excluded from fire for over 18 years. The study shows that fire exclusion favoured fire sensitive species and led to an increase in woody elements in all physiognomies studied although the effect of fire was shown to have a stronger effect on open savannas than on intermediate physiognomies. This work along with previous studies in the *cerrados*, concluded that if sites were to be protected for long periods of time it would encourage the more wooded (*cerradão*) physiognomies (Oliveira and Ratter, 2002; Hoffman and Moreira, 2002; Furley, 1999; Ratter, 1992; Coutinho, 1990; Eiten, 1972). Roitman *et al.* (2008) also showed that the structure and composition of a fire-protected savanna underwent significant changes (see also Hoffman, 2002; Hoffman and Solbrig, 2003; Hoffman *et al.*, 2003). Studies carried out in the Venezuelan llanos also showed a highly significant increment of the woody component and a change in floristic composition of the herbaceous layer after exclusion of fire and cattle grazing (San José and Fariñas, 1983 and 1991; Silva *et al.*, 2001). An increased occurrence of fires in the *cerrado* formations has also been evaluated with the aid of matrix model projections (Hoffmann, 1999), showing reductions in the density and size of woody plants as a result of increases in the number of fire events. The persistence of woody shrub elements in the more open *cerrado* reflects their ability to resist burning, through the development of resistant underground lingo-tubers (Medeiros and Miranda, 2008).

Several studies have suggested that burning is the main determinant factor explaining the differences in vegetation between fire-protected and unprotected sites given a lack of other significant factors, such as differences in soil properties (Moreira, 2000; Roitman *et al.*, 2008). Whilst some of the work carried out in *cerrados* has reflected this absence of relationship between soil properties and the different *cerrado* formations, this may result from the flux of vegetation over the landscape with time, and other studies have indicated stronger links between soil fertility and a gradient of *cerrado* physiognomies (Furley, 1996; Lopes and Cox, 1977ab; Goodland and Pollard (1973). This is likely to relate to the increased organic matter found in the more wooded formations and in part to local differences in parent material. Uptake of soil water was also shown to be greater for protected areas than for burned areas (Quesada *et al.*, 2008).

Numerous studies illustrate how the spectrum of *cerrado* physiognomies reacts to and is resilient to fire and Felfili *et al.*, (2000) and Roitman *et al.*, (2008) show how fire acts as an intermediate disturbance factor impeding the ability of the *cerrado* formations to reach 'carrying capacity'. Overall, there seems to be a common view shared by all long term fire exclusion studies, in South American studies and elsewhere, that an extremely complex interaction exists between fire and the dynamics of woody cover in savanna communities and that burning results in constant disequilibrium.

### **III. Achievements of long term experimentation on savanna vegetation**



The results from global long-term experiments afford many valuable insights into the effects of burning (Miao *et al.*, in press). Early ideas considered fire to be entirely harmful, leading to land degradation with woodland or forest retreat and savanna advance. The role of fire has subsequently been explored in much greater detail and precision, and has shown that regular low intensity fires at critical seasons can reduce fuel load, lower pest infestations, return nutrients to the ground and encourage plant diversity. The influence of fire behaviour, intensity and frequency, the timing of burns, and the overall impacts on vegetation structure, species composition and species resilience in varying conditions of rainfall, soil fertility, herbivory and human interaction have been shown to be intricately interwoven and to some extent site-specific.

The degree to which fire influences savanna vegetation is still controversial (see Scholes *et al.*, 2003; Van Wilgen *et al.*, 2003) but plant species have indisputably evolved fire-tolerant and fire-persistent traits (Allen, 2008). A number of general observations stand out as a result of prolonged burning:-

- i. vegetation structure is strongly affected, lowering the proportions of trees to shrubs and herbaceous plants and reducing ground cover; irregular fire behaviour leads to patchiness; ground layer plants change from perennials to a dominance of annuals.
- ii. tree height decreases inversely with fire frequency; total above-ground biomass is severely reduced.
- iii. tree and woody shrub density remains fairly constant through seedling recruitment and resprouting, though numbers of individual species numbers may be affected.
- iv. overall plant composition is little affected, although there may be feedback behaviour between fire and biodiversity.
- v. once trees reach a certain height (~3m+), they are less susceptible to burns.
- vi. burning has relatively little impact on subsurface rooting structures and, except with extraordinary intensities, does not penetrate far below the ground surface; however surface soil organic matter (0-5cm) can respond rapidly to changes in fire regime (viz. Williams *et al.*, 2008; Bird *et al.* 2000).
- vii. burning has significant effects on soil nutrient dynamics (which in turn can influence plant growth) and greenhouse gas exchange (Rees *et al.*, 2006).

Further characteristic features include:

- viii. fire has a more marked effect on the structure of woody vegetation when it occurs in higher rainfall areas (over ca. 600mm y<sup>-1</sup>).
- ix. the burn season and timing affects its impact on the vegetation, mediated by factors such as fuel moisture, fire weather and whether the vegetation has senesced.
- x. fire intensity and thus severity varies with fuel load, moisture content and meteorological conditions.
- xi. characteristic plants found over the spectrum of savanna formations may be fire-sensitive or fire-tolerant and the proportions vary with fire frequency, intensity and behaviour.
- xii. micro-environmental variations (such as soils or moisture availability) can have a distinct impact on burning and recovery.
- xiii. the fire return interval in savannas is typically ~3 years but can in places be annual.

Overall however, the ability of the vegetation to recover from severe fires relates to favourable climate and local factors such as bark thickness, coppicing, suckering and resprouting from basal stems or rootstocks and the supporting role of mycorrhizae (Högberg, 1992; Hartnett *et al.*, 2004). Taller woody plants tend to survive many of the fires by growing higher than the flame zone (Gignoux *et al.*, 1997; Caldwell and Zieger, 2000). The role of key environmental and ecological pressures, amongst which are soils and drainage, and patterns of herbivory, have also been added into dynamic models of savanna response to fire.

The present objective is to assess the information from global fire experiments with particular reference to the impact of long term fire trials on vegetation, and to illustrate the inherent concepts in a long-term fire experiment in Zimbabwe.

#### **IV. Fire trials in Zimbabwe**

As in many parts of Africa, there is evidence of sustained use of fire throughout the country for thousands of years and for a multitude of purposes, and natural fires have occurred since long before man appeared. In what is now Zimbabwe, extensive fires caused by human activity over prolonged periods have resulted in a manmade landscape over most if not all of the country, and it has been suggested that the savanna woodlands as well as the grasslands are the end result of human disturbance (Austen, 1972; West, 1972; the fire climax of Trapnell, 1959 and Lawton, 1979). Stem mortality is especially noticeable in the more semi-arid districts, such as the savannas on Kalahari sands in the west of the country (Holdo, 2005), where late dry season fires can severely damage woody plants (Gambiza *et al.*, 2005). The savanna woodlands are crucial to the livelihoods of many rural people and a simulation of woodland dynamics under different management systems is assessed by Gambiza *et al.*, (2000).

The two best known and most detailed studies are located at the Grassland Research Station at Marondera in dry woodland savanna (*miombo*) to the west of the country, and at Matapos research station in the south-west with a tree-bush vegetation cover. At Matapos, early small plot experiments were started in 1947 to study different management strategies and the results of the trials were later reported by Kennan (1972). Two typical areas of *thornveld* (Acacia-dominated tree-bush savanna on moderately fertile red or black soils derived from epidiorite and schist), and *sandveld* (*Terminalia-Burkea* tree-bush cover on relatively infertile gneiss and granite). The plots on the *sandveld* (started in 1947) measured 100x90feet and those on the *thornveld* (90x75feet) but otherwise all the plot experiments were identical (12 randomised treatments, replicated three times). While grazing by domestic animals was excluded, the sites were open to wildlife and therefore grazed. Despite considerable care, the results have been difficult to interpret, though the point quadrat and tree count data yielded useful information. Basal cover was affected by fire frequency, which also reflected a succession of stages from more open to more woody conditions. There were also interesting comments made on the susceptibility or resilience to fire by different grass, shrub and tree species and the also on the effects of burning at different times of the year, with the *sandveld* vegetation being on the whole much more resistant to burning than the *thornveld*. Additional trials were also carried out at Nyamandhlova Station (hotter and drier) with similar results to the *thornveld* over a 17 year period of analysis, and at Tuli (low veld with very high

temperatures and low rainfall) but the latter was abandoned because of the extreme irregularity of rainfall (Kennan, 1972).

The other major long term experiment was situated at Marondera, and the remainder of this contribution will outline and analyse the preliminary results from this set of fire trials.

#### **V. The Marondera fire trials from 1953 onwards**

A long term burning experiment was set up in 1953 at the Marondera Grassland Research Station southeast of Harare. The station is situated within one of the largest blocks of *miombo* vegetation in southern Africa and lies at an altitude of 1610m. There are two distinct seasons – hot and rainy from November to April and then a cool and dry season. Some rain occurs in every month, with a maximum from December and February. The driest months of the year are July and August. The mean annual rainfall is around 900mm, but there are wide variations between years. There have been a number of very dry years (linked to El Nino events), with <500mm total annual rainfall, including 1990/1 and 1991/2 towards the end of the fire experiments. Above average rainfall was received in several years, including 1953 when most of the treatments began. Over the period 1941-1997, the maximum total annual rainfall recorded was 1700mm in 1980/1. Mean monthly temperatures range from 11<sup>o</sup> C in June to 19<sup>o</sup> C in November. Temperatures appear to have been slightly higher than average from 1993 to 1997. Occasional night frosts in the winter period over elevated ground restrict the growth of plants.

The *miombo* is a mesic to dystrophic savanna woodland (Campbell *et al.* 1995, 1998; Chidumayo 1997). It is a diverse formation with an estimated 8500 species of higher plants of which 334 are trees (Frost, 1996). It is dominated by *Brachystegia*, *Julbernardia* and *Isoberlinia*, (Fabaceae, sub-family Caesalpinioideae). In the central plateau of Zimbabwe, which incorporates the study area, the natural vegetation is described as deciduous *miombo* woodland with *B. spiciformis* and *J. globiflora* as dominants. Other common associated plants are *Albizia antunesiana*, *Combretum molle*, *Faurea speciosa*, *Strychnos cocculoides* and *Vangueria infausta*. There is considerable variation in the composition and biomass of the herbaceous layer, and includes the grasses *Hyparrhenia*, *Andropogon*, *Loudetia*, *Digitaria*, *Eragrostis* (Frost, 1996), and also *Brachiaria brizantha*, *Craspedorhachis rhodesiana* and *Rhynchelytrum nyassanum*. The shrubs typically comprise the genera *Dolichos*, *Eriosema* and *Indigofera*.

The soils in the Marondera region are mostly Ultisols, but over the experimental plots are Alfisols (orthoferrallitic group, Thompson and Purves, 1978, Nyamapfene, 1991). They are generally coarse-grained sandy soils derived from granite, characterised by a kaolinitic clay fraction and free sesquioxides. Less than 5% consists of weatherable material and the soils are heavily leached. They are acidic and nutrient-poor, with low levels of exchangeable bases, nitrogen and extractable phosphorus. The weak cation exchange capacity results from low levels of organic matter and the low-activity clay fraction.

The objective of the original study was to investigate the effectiveness of fire in controlling coppice re-growth of the woody vegetation (Barnes, 1965; Strang, 1974). Originally the area was covered by dense woodland and, before the beginning of the

experiment, the vegetation was cleared manually (in 1948) by cutting the woody component at ground level. However, there were no measurements made either of the vegetation or the soils prior to the application of the burning regime. At the start of the experiment, the dense coppice that had grown since 1948 (6-15ft high with a few large trees) was cut to ground level and the first of the fire treatments started in 1953 (Barnes, 1965).

The fire experiment consisted of a 5x2-split plot design plus control plots with replicates in two randomised blocks. Each plot (36x60m) was subdivided into two equal parts of 18x60m. One part was cleared by mattock and both parts were included in the fire frequency trials. The implications of the mattock + burn treatments are not considered here. The fire treatments established five burn frequencies. These were burning annually, burning every second year, every third year, every fourth year, and no burn (control plots). Replications were assigned to the longer intervals between fires so that at each frequency, there was a plot burnt each year. Fires were started late in the dry season, before the spring rain, to achieve as hot a burn temperature as possible. The plots were surrounded by a 3 m wide fire- break and grazing was excluded from the area.

The treatments are described and numbered as follows:

- burnt annually, started in 1953 (F1)
- burnt biennially, started in 1953 (F2)
- burnt biennially, started in 1954 (F2)
- triennial burn, started in 1953 (F3)
- triennial burn, started in 1954 (F3)
- triennial burn, started in 1955 (F3)
- four-year burn, started in 1953 (F4)
- four-year burn, started in 1954 (F4)
- four-year burn started in 1956 (F4)
- control, complete protection from fire (F0)

These plots were laid out in the two parallel blocks as illustrated in Fig 1 and lie on a north-facing, gentle slope (ca. 3 degrees). The fire treatments continued until 1963 when they were temporarily abandoned because of severe damage from cockchafer grubs (Strang, 1974). The fire experiment was finally concluded in 1991 and species abundance was analysed for data collected in 1987, 1988 and 1990. Further measures of basal area and tree height were undertaken later in 2007, 16 years after the last fire treatments.

### **The effect of burning on tree growth**

After 9 years (1953 –1962), the growth of trees and re-growth coppice was slight and there was little difference evident between the burn frequencies (Table 1, left). Even with a four-year burn interval there was little sign of a growth in height. The plots that had complete protection from fire showed the greatest tree growth, height and canopy development by 1962. Clearly burning has had a dramatic impact, though it should be remembered that a half of each plot was cleared of woody vegetation before the start of the fire treatments and therefore there was less buffering effect. As previously reported (Campbell *et al.*, 1995), fire is the principal agent in preventing regeneration and crippling young stems. Grundy (1992) and Grundy *et al.* (1994) observed that *Brachystegia* and *Julbernardia* increased rapidly after cutting and thereafter more

slowly, but there is little evidence from our data that there was much growth during the early years of the experiment. However, later studies (Campbell, 1995) and our observations from 2007 (Table 1, right), indicate that the 3 and 4 year burn plots had recovered with greater mean heights (14.8-15.6 m) than were present in the control plots (9.5 m) ( $p < 0.05$ ). These canopies had a similar species composition to the protected plots but a less evolved structure. The height data show no significant variation between treatments. This indicates that the few trees that did survive on the frequently burned plots were large specimens similar in stature to those on the unburned plots.

*Brachystegia* and *Julbernardia* dominated the plots in 2007. The number of large stems of these two species, as a fraction of the total number of large stems, was  $0.89 \pm 0.16$  for F3,  $0.83 \pm 0.05$  for F4 and  $0.98 \pm 0.03$  for F0. F1 had no large trees (all data refer to live trees  $> 20$ cm dbh). There was no significant treatment effect (1 way ANOVA  $p = 0.89$ ). From the historic notes it appears that this dominance was sustained throughout the experiment. Trees were almost completely absent from annually burnt plots even after 16 years (without fire) from the end of the experiment, but were somewhat more abundant in 2-yearly and 3-yearly burnt plots, where they tended to occur as suppressed saplings. *Brachystegia* and *Julbernardia* tend to be fire-sensitive when young and increasingly tolerant when they grow up to greater canopy height.

The basal area of trees measured in 2007 and stocking density was highest in the quadrennial burn treatment, but due to the high variability within plots, these differences were only significant at  $p < 0.1$  (Figure 2). The long intervals between fire (triennial and quadrennial burns) allowed many trees to attain heights and bark thicknesses where they were less susceptible to fire damage and such observations are consistent with previous studies (eg. Higgins *et al.*, 2007; van Wilgen *et al.*, 2007). The relatively larger trees and biomass in the 4-year burn compared with the complete protection treatment may have reflected the response of trees to the release of nutrients resulting from the burning treatments. The small plots, coupled with the intrinsic variability of woodland vegetation structure, means that the replication is critical for detecting differences between treatments. The ANOVA table (both parametric and non-parametric) for plot basal area shows that the variation within treatments, although large, was smaller than between treatments. The 17 replicates were enough to control for this heterogeneity and credit must be given to those who designed this experiment for achieving sufficient replication. This is in contrast to many other long-term experiments in Africa, which were unreplicated.

The floristic composition of the plots was not affected by the burning treatments, with 80-100% of the trees being of the two dominant species. This is in contrast to other long-term fire experiments (eg Zambia Trapnell, 1959), where the protected plots in wetter miombo conditions were invaded by forest and evergreen species. This may be due to a lack of nearby forest as a source of seeds at Marondera.

### **Effects of fire on herbaceous plants**

The composition of herbaceous plant communities was influenced by treatments during the course of the experiment with both increases and decreases in individual species. Some of the grass species flourished after burning, whilst others decreased.

For example, in relative terms, *Hyparrhenia filipendula*, *Heteropogon contortus*, and *Eriosema affin* showed significantly higher numbers in burned plots than in protected plots ( $p < 0.001$ ;  $p < 0.01$ ;  $p < 0.01$  respectively). There was no significant difference between the annual burn and the quadrennial burn. Figure 3a. On the other hand, burning significantly reduced the numbers of some grass species such as *Rhynchelytrum nyassanum*, *Digitaria gazensis* and *Eragostis racemosa* ( $p < 0.05$ ). Figure 3b. At the same time the numbers of other species increased significantly following burning *Crasspedhorachis qfricana*, *Andropogon spp* and *Trachypogon spicatus* but there was no apparent trend (Table 2). This matches some of the observations in Strang (1974), although the trends were not statistically significant. The numbers of sedges and further grass species (such as *Rhytichelytrum repens* and *Nidorela uricrata*) were not significantly affected by the fire treatments. However, whilst there is evidence that the sedges were reduced by fire, no apparent trend could be discerned for *R. repens* or *Nuricrata* (Table 3). These results parallel conclusions elsewhere illustrating how fires influence the demography of the herbaceous strata (such as Garnier and Dajoz, 2001).

Overall, the preliminary evidence from this long-term experiment indicates that frequent burning (annual, biennial and to a large extent triennial fires) severely inhibits woody plant growth and has a mixed impact on the herbaceous cover. Interestingly, the tree growth in the triennial and quadrennial fire frequencies ends up by being greater than that for the control plots. The results suggest that regeneration following fire is slow and patchy but that once woody plants have reached a stage where they are relatively resistant to fire, miombo woodland can develop rapidly. Frost (1996) suggests that this is likely to occur when trees reach 2m or more. Other research suggests figures of 3m+, and Ryan and Williams (submitted) in nearby Mozambique, suggests that there is a step change in survivorship at 12cm dbh. The present research indicates that this occurs after 10 years. The patchiness may reflect the nature and distribution of the pre-fire trial vegetation and its subsequent re-sprouting, and may indicate small scale vegetation patterns and nutrient cycling related to factors such as past disturbances or termite mounds (Traore *et al.*, 2008; Gill *et al.*, 2001; Campbell *et al.*, 1988, 1995). This variability in the burning impact is also likely to be the result of increasing bark resistance, lower levels of combustible material and gradual reduction in grass cover (potential comestible load) and therefore less severe fires. Conversely, as the woody cover is removed, so the herbaceous layer is likely to increase (increased light and moisture) leading to a greater fuel load and risk of burning (Gambiza *et al.*, 2000).

While the herbaceous cover predominates under frequent fires, the species composition varies, with a number of characteristic grass species flourishing following fires whilst others are severely reduced. Similar changes in species composition have been reported elsewhere (eg Hoffman and Moreira, 2002). The economic significance of this, for instance with regard to palatability for livestock (Hassan *et al.*, 2008; Lowry, 1995), would be worth further investigation.

## VI. Conclusions

The value of long-term studies in environmental and ecological research is controversial but the general consensus is that there is much useful information to be derived from well-founded and rigorously controlled fire experiments (Brown *et al.*,

2001). While there are many examples of field studies over years or even a few decades, the number of longer fire trials is very low. Marondera represents one of the few studies that have been soundly established and systematically carried out over nearly four decades (1953-1991) and in the face of numerous difficulties. The plots have remained intact since the cessation of the fire trails and continue to provide valuable information on re-growth.

The preliminary results for this dry miombo savanna woodland are in general accord with other reported work with a few significant additions. Frequent fires (especially annual and biennial) have had a marked impact on the vegetation structure and tree density, reducing the plots to fire-resistant grasses with a scattering of shrubs. A distinct recovery was observable with fire return intervals longer than two years and re-seeding, re-sprouting and coppicing were evident, resulting in a large number of individuals in any of the woody species populations following a number of years without fire. With repeated burning at short return intervals, plant composition changed in that fire-tolerant species became more dominant. Extreme burning over a prolonged period had a persistent effect for long after the fire experiment had ceased. However, since seedlings are generally fire-resistant and regeneration is so effective, it is probable that a fire-free period will enable the species composition to mirror that reported elsewhere and remain relatively constant. This is being investigated at present with re-surveys following the termination of the fire trials. The control plots illustrate the likely form of the vegetation structure and plant composition with fire elimination although the greatest growth was reported in the less frequently burnt plots.

### **Acknowledgements**

Our grateful thanks for the assistance of staff at the Marondera Grassland Research Station, particularly Nation Chikumba, Xavier Poshiwa, Richard Muza Maxwell, Milton Zimondi, Office Busu, Phaniel Mazakata, Dhliwayo Thulandi, Merjury Muswere, Joseph Mutandagayi and Bothwell Tawengwa and the staff over several decades, who carried out the vegetation surveys under often extremely difficult conditions; also the help of Zivanai Tsvuura and James Gambiza, formerly of the University of Zimbabwe. The hospitality and hard work of Gary and June Goss and Andy Roberts made the work in 2007 possible.

### **References**

**Allen, H.D.** 2008: Fire: plant functional types and patch mosaic burning in fire-prone ecosystems. *Progress in Physical Geography* 32, 421-437.

- Andersen, A.N., Cook, G.D., Corbett, L.K., Douglas, M.M., Eager, R.W., Russell-smith, J., Setterfield, S.A., Williams, R.J. and Woinarski, J.C.Z.** 2005: Fire frequency and biodiversity conservation in Australian tropical savannas: implications from the Kapalga experiment. *Austral Ecology* 30, 155-167.
- Andersen, A.N., Cook, G.D. and Williams, R.J.,** editors. 2003: *Fire in tropical savannas: The Kapalga Experiment*. Springer Verlag. New York.
- Austen, B.** 1972: *The history of veld burning in the Wankie National Park, Rhodesia*. Proceedings of the Tall Timbers Fire Ecology Conference. Florida, Tallahassee. 277-296.
- Aubreville, A.** 1947: *The disappearance of tropical forests of Africa*. Rome, FAO.
- Barnes, D.I.** 1965: The effect of frequency of burning and mattocking on the control of coppice in the marandellas sandveld. *Rhodesia Journal of Agricultural Research* 3, 55-56b.
- Bennett, L.J., Judd, T.S. and Adams, M.A.** 2003: Growth and nutrient content of perennial grasslands following burning in semi-arid, sub-tropical Australia. *Plant Ecology* 164, 185-199.
- Beringer, J., Hutley, L.B., Tapper, N.G. and Cernusak, L.A.** 2007: Savanna fires and their impact on net ecosystem productivity in North Australia. *Global Change Biology* 13, 990-1004.
- Bird, M.I., Veenendaal, E.M., Moyo, C., Lloyd, J. and Frost, P.** 2000: Effect of fire and soil texture on soil carbon in a sub-humid savanna (Matapos, Zimbabwe). *Geoderma* 94, 71-90.
- Bond, W.J. and Archibald, S.** 2003: Confronting complexity: fire policy choices in South African savanna parks. *International Journal of Wildland Fire* 12, 381-389.
- Bond, W.J. and Keeley, J.E.** 2005: Fire as a global herbivore: the ecology and evolution of flammable ecosystems. *Trends in Ecology and Evolution* 20, 387-394.
- Bond, W.J. and Midgely, J.J.** 2001: Ecology of sprouting in woody plants: the persistence niche. *Trends in Ecology and Evolution* 16, 45-51.
- Bond, W.J., Woodward, F.I. and Midgley, G.F.** 2005: The global distribution of ecosystems in a world without fire. *New Phytologist* 165, 525-538.
- Bond, W.J. and Van Wilgen, B.W.** 1996: *Fire and plants*. London, Chapman and Hall.
- Bond, W.J. and Van Wilgen, B.W.** 2005: The global distribution of ecosystems in a world without fire. *New Phytologist* 165, 525-538.
- Booyson, P.de V. and Tainton, N.M.** 1984: *Ecological effects of fire in South African ecosystems*. New York, Springer Verlag.
- Bowman, D.M.J.S. and Franklin, D.C.** 2005: Fire ecology. *Progress in Physical Geography* 29, 248-255.
- Bowman, D.M.J.S. and Prior, L.D.** 2004: Impact of Aboriginal landscape burning on woody vegetation in Eucalyptus tetrodonta savanna in Arnhem Land, northern Australia. *Journal of Biogeography* 31, 807-817.
- Bowman, D.M.J.S., Walsh, A. and Prior, L.D.** 2004: Landscape analysis of Aboriginal fire management in Central Arnhem Land, north Australia. *Journal of Biogeography* 31, 207-223.
- Bradstock, R.A., Williams, J.E. and Gill, A.M.,** editors. 2002: *Flammable Australia: the fire regimes and biodiversity of a continent*. Cambridge, CUP.
- Braithwaite, R.** 1996: Biodiversity and fire in the savanna landscape. In Solbrig, O.T., Medina, E. And Silva, J.A., editors. *Biodiversity and savanna ecosystem processes*. New York, Springer Verlag. 121-142.



- Brookman-Amisshah, J., Hall, J.B., Swaine, M.D. and Attakorah, J.Y.** 1980: A re-assessment of a fire protection experiment in northeastern Ghana savanna. *Journal of Applied Ecology* 17, 85-99.
- Brown, J.H., Whitham, T.G., Ernest, S. and Gehring, C.** 2001: Complex species interactions and dynamics of ecological systems: long term experiments; ecology through time. *Science* 293, 643-649.
- Caldwell, A.E. and Zieger, U.** 2000: A reassessment of the fire tolerance of some miombo species in Central province, Zambia. *African Journal of Ecology* 38, 138-146.
- Campbell, B.M., Swift, M.J., Hatton, J.C. and Frost, P.G.H.** 1988: Small-scale vegetation pattern and nutrient cycling in miombo woodland. In Verhoeven, J.T.A., Heil, G.W and Werger, M.J.A., editors, *Vegetation structure in relation to carbon and nutrient economy*. The Hague, SPB Academic Publishing. 69-85.
- Campbell, B.M., Cunliffe, R.N. and Gambiza, J.** 1995: Vegetation structure and small-scale pattern in Miombo woodland, Marondera, Zimbabwe. *Bothalia* 25, 121-126.
- Campbell, B.M., Frost, P., King, J.A., Mwanza, M. and Mhlanga, L.** 1994: The influence of trees on soil fertility on 2 contrasting semiarid soil types at Matapos, Zimbabwe. *Agroforestry Systems* 28, 159-172.
- Campbell, B.M., Swift, M.J., Frost, P.G.H. and Kirchmann, H.** 1998: Comparative ecosystem characteristics of a miombo woodland and an adjacent agricultural field. In Bergstrom, L. and Kirchmann, H, editors, *Carbon and nutrient dynamics in natural and agricultural tropical ecosystems*. Wallingford UK), CAB International. 201-226.
- Charter, J.R. and Keay, R.W.J.** 1960: Assessment of the Olokomeji fire control experiment 28 years after institution. *Nigerian Forestry Information Bulletin* 3, 1-32.
- Chidumayo, E.N.** 1988: A re-assessment of the effects of fire on miombo regeneration in the Zambian copperbelt. *Journal of Tropical Ecology* 7, 430-438.
- Chidumayo, E.N., Gambiza, J. and Grundy, I.** 1996: Managing miombo woodlands. In Campbell, B.M. editor, *The miombo in transition: woodlands and welfare in Africa*. Bogor, Indonesia, Center for International Forestry Research (CIFOR). 175-193.
- Chidumayo, E.N.** 1997: *Miombo ecology and management*. Stockholm, Stockholm Environment Institute.
- Chongo, D., Nagasawa, R. and Ahmed, A.O.C.** 2007: Fire monitoring in savanna ecosystems using MODIS data: a case study of Kruger national park, South Africa. *Landscape and Ecological Engineering* 3, 79-88.
- Coutinho, L.M.** 1982: Ecological effects of fire in Brazilian cerrados. In Huntley, B.J. and Walker, B.H., editors, *Ecology of tropical savanna*. Berlin, Springer Verlag. 273-291.
- Coutinho, L.M.** 1990: Fire in the ecology of the Brazilian cerrados. In Goldammer, J.G., editor, *Fire in the tropical biota: ecosystem processes and global challenges*. Berlin, Springer Verlag. 82-105.
- Du Toit, J., Rogers, K.H. and Biggs, H.C.** editors, 2003: *The Kruger experience: ecology and management of savanna heterogeneity*. New York, Island Press.
- Dyer, R., Jacklyn, P., Partridge, I., Russell-Smith, J. and Williams, D.,** editors. 2001: *Savanna burning: understanding and using fire in northern Australia*. Darwin, Tropical Savannas CRC.
- Dyer, R. and Smith, M.S.** 2003: Ecological and economic assessment of prescribed burning impacts in semi-arid pastoral lands of northern Australia. *International Journal of Wildland Fire* 12, 403-413.

- Edwards, A., Kennett, R., Price, O., Russell-Smith, J., Spiers, G. and Woinarski, J.** 2003: Monitoring the impacts of fire regimes on vegetation in northern Australia: an example from Kakadu National Park. *International Journal of Wildland Fire* 12, 427-440.
- Eiten, G.** 1972: The cerrado vegetation of Brazil. *Botany Review* 38, 201-341.
- Eldroma, E.L.** 1984: Effects of burning and grazing on the productivity and number of plants in the Queen Elizabeth National Park, Uganda. *African Journal of Ecology* 22, 165-174.
- Enslin, B.W., Potgieter, A.L.F., Biggs, H.C. and Biggs, R.** 2000: Long term effects of fire frequency and season on the woody vegetation dynamics of the *Sclerocarya birrea*/*Acacia nigrescens* savanna of the Kruger National Park. *Koedoe* 43, 27-37.
- Felderhof, L. and Gilliesson, D.** 2006: Comparison of fire patterns and fire frequency in two tropical savanna bioregions. *Austral Ecology* 31, 736-746.
- Felfily, J.M., Rezende, A.V., Silva Junior, M.C.** 2000: Changes in floristic composition of cerrados sensu stricto in Brazil over a 9-year period. *Journal of Tropical Ecology* 16, 576-590.
- Fensham, R.J., Fairfax, R.J., Butler, D.W. and Bowman, D.M.J.S.** 2003: Effects of fire and drought in a tropical eucalypt savanna colonized by rain forest. *Journal of Biogeography* 30, 1405-1414.
- Ferguson, K.** 1998: The effects of fire on shrub survival in Mkomazi. In Coe, M., McWilliam, N., Stone, G. and Packer, M. editors, *Mkomazi: the ecology, biodiversity and conservation of a Tanzanian savanna*. London, Royal Geographical Society. 159-170.
- Frost, P.G.G.** 1996: The ecology of miombo woodlands. In Campbell, B.M., editor, *The miombo in transition: woodlands and welfare in Africa*. Bogor, Indonesia: CIFOR (Center for International Forestry research). 11-57.
- Frost, P.G.H. and Robertson, F.** 1987: The ecological effects of fire in savannas. In Walker, B.H., editor, *Determinants of savannas*. Oxford, IRL Press.
- Furley, P.A.** 1999: The nature and diversity of neotropical savanna vegetation with particular reference to the Brazilian cerrados. *Global Ecology and Biogeography* 8, 223-241.
- Furley, P.A., Proctor, J. and Ratter, J.A.** 1992: *Nature and dynamics of forest-savanna boundaries*. London, Chapman & Hall.
- Gambiza, J., Bond, W., Frost, P.G.H. and Higgins, S.** 2000. A simulation model of miombo woodland dynamics under different management regimes. *Ecological Economics* 33, 353-368.
- Gambiza, J., Campbell, B.M., Moe, S.R. and Frost, P.G.H.** 2005: Fire behaviour in a semi-arid *Baikiaea plurijuga* savanna woodland on Kalahari sands in western Zimbabwe. *South African Journal of Science* 101, 239-244.
- Garnier, L.K.M. and Dajoz, I.** 2001: The influence of fire on the demography of a dominant grass species of West African savannas, *Hyparrhenia diplandra*. *Journal of Ecology* 89, 200-208.
- Gashaw, M. and Michelsen, A.** 2002: Influence of heat shock on seed germination from regularly burnt savanna woodlands and grasslands in Ethiopia. *Plant Ecology* 159, 83-93.
- Gignoux, J., Clobert, J. and Menault, J-C.** 1997: Alternative fire resistance strategies in savanna trees. *Oecologia* 110, 576-583.
- Gill, A.M., Allan, G. and Yates, C.** 2003: Fire-created patchiness in Australian savannas. *International Journal of Wildland Fire* 12, 323-331.

- Goodland, R. and Pollard, R.** 1973: The Brazilian cerrado vegetation: a fertility gradient. *Journal of Ecology* 61, 219-224.
- Govender, N., Trollope, W.S.W. and Van Wilgen, B.W.** 2006: The effect of fire season, fire frequency, rainfall and management on fire intensity in savanna vegetation in South Africa. *Journal of Applied Ecology* 43, 748-758.
- Grundy, I.M.** 1992: Regeneration of *Brachystegia spiciformis* and *Julbernardia globiflora* in Zimbabwean miombo woodland. In Pearce, G.D. and Gumbo, D.J. editors, *The ecology and management of indigenous forests in southern Africa*. Symposium Proceedings: Victoria Falls. Harare, Zimbabwe Forestry Commission and SAREC. 191-196.
- Grundy, I.M., Campbell, B.M. and Frost, P.G.H.** 1994: Spatial pattern, regeneration and growth-rates of *Brachystegia spiciformis* and *Julbernardia globiflora*. *Vegetatio* 115, 101-107.
- Hartnett, D.C., Potgieter, A.L.F. and Wilson, G.W.T.** 2004: Fire effects on mycorrhizal symbiosis and root systems architecture in southern African savanna grasses. *African Journal of Ecology* 42, 328-337.
- Hassan, S.N., Rusch, G.M., Hytteborn, H., Skarpe, C. and Kikula, I.** 2008: Effects of fire on sward structure and grazing in western Serengeti, Tanzania. *African Journal of Ecology* 46, 174-185.
- Heinl, M., Sliva, J., Murray-Hudson, M. and Tacheba, B.** 2007: Post-fire succession on savanna habitats in the Okavango delta wetland, Botswana. *Journal of Tropical Ecology* 23, 705-713.
- Higgins, S.I., Bond, W.J., February, E.C., Bronn, A., Euston-Brown, D.I.W., Enslin, B., Govender, N., Rademan, L., O'Regan, S., Potgieter, A.L.F., Scheiter, S., Sowry, R., Trollope, L. and Trollope, W.S.W.** 2007: Effects of four decades of fire manipulation on woody vegetation structure in savanna. *Ecology* 88, 1119-1125.
- Hoffman, W.A.** 1999: Fire and population dynamics of woody plants in a neotropical savanna: matrix model projections. *Ecology* 80, 1354-1369.
- Hoffman, W.A.** 2002: Direct and indirect of fire on radial growth of cerrado savanna trees. *Journal of Tropical Ecology* 18, 137-142.
- Hoffman, W.A. and Moreira, A.G.** 2002: The role of fire in population dynamics of woody plants. In Oliveira, P.S. and Oliveira, R.J., editors, *The cerrados of Brazil*, New York, Columbia University Press. 159-177.
- Hoffman, W.A. and Solbrig, O.T.** 2003: The role of topkill in the differential response of savanna woody species to fire. *Forest Ecology and Management* 180, 273-286.
- Hoffman, W.A., Orthen, B. and do Nascimento, P.K.V.** 2003: Comparative fire ecology of tropical savanna and forest trees. *Functional Ecology* 17, 720-726.
- Holdo, R.M.** 2005: Stem mortality following fire in Kalahari sand vegetation: effects of frost, prior damage and tree neighbourhoods. *Plant Ecology* 180, 77-86.
- Högberg, P.** 1992: Root symbiosis of trees in African dry tropical forests. *Journal of Vegetation Science* 3, 393-400.
- Hopkins, B.** 1965: Observations on savanna burning in the Olokemeji Forest Reserve, Nigeria. *Journal of Applied Ecology* 2, 367-381.
- Hudak, A.T., Fairbanks, D.H.K. and Brockett, B.H.** 2004: Trends in fire patterns in a southern African savanna under alternative land use practices. *Agriculture Ecosystems and Environment* 101, 307-325.
- Kennan, T.C.D.** 1972: The effects of fire on two vegetation types at Matopos, Rhodesia. *Proceedings Tall Timbers Fire ecology Conference* 53-98. Tallahassee, Florida, USA.

- Kennedy, A.D. and Potgieter, A.L.F.** 2003: Fire season affects size and architecture of *Colophospermum mopane* in southern African savannas. *Plant Ecology* 167, 179-192.
- Laris, P. and Wardell, D.A.** 2006: Good, bad or 'necessary' evil? Re-interpreting the colonial burning experiments in the savanna landscapes of West Africa. *The Geographical Journal* 172, 271-290.
- Lawton, R.M.** 1978: A study of the dynamic ecology of Zambian vegetation. *Journal of Ecology* 66, 175-198.
- Lentile, L.B., Holden, Z.A., Smith, A.M.S., Falkowski, M.J., Hudak, A.T., Morgan, P., Lewis, S.A., Gessler, P.E. and Benson, N.C.** 2006: Remote sensing techniques to assess active fire characteristics and post-fire effects. *International Journal of Wildland Fire* 15, 319-345.
- Liedloff, A.C., Coughenour, M.B., Ludwig, J.A. and Dyer, R.** 2001: Modelling the trade-off between fire and grazing in a tropical savanna landscape, northern Australia. *Environment International* 27, 173-180.
- Lock, J.M.** 1977: Preliminary results from fire and elephant exclusion plots in Kabalega National Park, Uganda. *East African Wildlife Journal* 15, 229-232.
- Lonsdale, W.M. and Braithwaite, R.W.** 1991: Assessing the effects of fire in tropical savannas. *Austral Ecology* 16, 363-374.
- Lopes, A.S. and Cox, E.R.** 1977a; A survey of the fertility status of surface soils under cerrados vegetation in Brazil. *Soil Science Society of America Journal* 41, 742-747.
- Lopes, A.S. and Cox, E.R.** 1977b; Cerrado vegetation in Brazil: an edaphic gradient *Agronomy Journal* 69, 828-831.
- Louppe, D., Oattara, N. and Coulibaly, A.** 1995: The effects of brush fires on vegetation: the Aubreville fire plots after 60 years. *Commonwealth Forestry Review* 74, 288-292.
- Lowry, J.B.** 1995: Deciduous trees: a dry season feed resource in Australian tropical woodlands? *Tropical Grasslands* 29, 13-17.
- Medeiros, M.B. and Miranda, H.S.** 2008: Post-fire resprouting and mortality in cerrados woody plant species over a three-year period. *Edinburgh Journal of Botany* 65, 53-68.
- Menault, J.C. and Cesar, J.** 1982: The structure and dynamics of a West African Savanna. In: Huntley, B.J and Walker, B.H. editors, *Ecology of tropical savannas*. New York, Springer-Verlag. 80-100.
- Miao, S., Carstenn, S. and Nungesser, M.** editors. in press. *Real world ecology: large scale and long-term case studies and methods*. Berlin, Springer Verlag.
- Miranda, H.S., Bustamente, M.M.C. and Miranda, A.C.** 2002: The fire factor. In Oliveira, P.S. and Oliveira, R.J., editors, *The cerrados of Brazil*, New York, Columbia University Press. 51-68.
- Mistry, J.** 1988: Fire in the cerrados (savannas) of Brazil: an ecological review. *Progress in Physical Geography* 22, 425-448.
- Moreira, A.G.** 2000: Effects of fire protection on savanna structure in Central Brazil. *Journal of Biogeography* 27, 1021-1029.
- Muller, S.C., Overbeck, G.E., Pfadenhauer, J. and Pillar, V.D.** 2007: Plant functional types of woody species related to fire disturbance in forest-grassland ecotones. *Plant Ecology* 189, 1-14.
- Nangendo, G., Stein, A., ter Steege, H. and Bongers, F.** 2005: Changes in woody plant composition of three vegetation types exposed to a similar fire regime for over 46 years. *Forest Ecology and Management* 217, 351-364.

- Nefabas, L.L. and Gambiza, J.** 2007: Fire tolerance mechanisms of common woody plant species in a semi-arid savanna in south-western Zimbabwe. *African Journal of Ecology* 45, 550-556.
- Nyamapfene, K.** 1991: *Soils of Zimbabwe*. Harare, Nehanda Publishers.
- Oliveira-Filho, A.T. and Ratter, J.A.** 2002: Vegetation physiognomies and woody flora of the cerrado biome. In Oliveira, P.S., and Marquis, R.J. editors, *The cerrados of Brazil*. New York, Columbia University Press. 91-120.
- Palacios-Orueta, A., Chuvieco, E., Parra, A. and Carmona-Moreno, C.** 2004: Remote sensing and geographic information systems methods for global spatiotemporal modelling of biomass burning emissions: assessment in the African continent. *Journal of Geophysical Research- Atmospheres* 109. D14SO9.
- Palacios-Orueta, A., Chuvieco, E., Parra, A. and Carmona-Moreno, C.** 2005: Biomass burning emissions: a review of models using remote-sensing data. *Environmental Monitoring and Assessment* 104, 189-209.
- Preece, N.** 2002: Aboriginal fires in monsoonal Australia from historical accounts. *Journal of Biogeography* 29, 321-336.
- Price, O., Edwards, A., Connors, G., Woinarski, J., Ryan, G., Turner, A., and Russell-Smith, J.** 2005: Fire heterogeneity in Kakadu National park, 1980-2000. *Wildlife Research* 32, 425-433.
- Prior, L. D., Brook, B. W., Williams, R. J., Werner, P. A., Bradshaw, C. J. A. and Bowman, D.M.J.S.** 2006: Environmental and allometric drivers of tree growth rates in a north Australian savanna. *Forest Ecology and Management* 234, 164-180.
- Quesada, C.A., Hodnett, M.G., Breyer, L.M., Santos, A.J.B., Andrade, S., Miranda, H.S., Miranda, A.C. and Lloyd, J.** 2008: Seasonal variations in soil water in two woodland savannas of central Brazil with different fire history. *Tree Physiology* 28, 405-415.
- Radford, I.J, Nicholas, D.M. and Brown, J.R.** 2001: Impact of prescribed burning on *Acacia nilotica* seed banks and seedlings in northern Australia. *Journal of Arid Environments* 49, 795-807.
- Ramsay, J.M. and Rose Innes, R.** 1963: Some quantitative observations on the effects of fire on the Guinea savanna vegetation of northern Ghana over a period of eleven years. *African Soils* 8, 41-85.
- Rees, R.M., Wuta, M. and Furley, P.A.** 2006: Nitrous oxide fluxes from savanna (miombo) woodlands in Zimbabwe. *Journal of Biogeography* 33, 424-437.
- Roitman, I., Felfili, J.M. and Rezende, A.V.** 2008: Tree dynamics of a fire-protected cerrados sensu stricto surrounded by forest plantations, over a 13-year period (1991-2004) in Bahia, Brazil. *Plant Ecology* 197, 255-267.
- Rose Innes, R.** 1971: *Fire in West African vegetation*. Proceedings of the Annual Tall Timbers Fire Ecology Conference, 11, 147-173.
- Rossiter, N.A., Setterfield, S.A., Douglas, M.M. and Hutley, L.B.** 2003: testing the grass-fire cycle: alien grass invasion in the tropical savannas of northern Australia. *Diversity and Distributions* 9, 169-176.
- Russell-Smith, J., Whitehead, P.J., Cook, G.D. and Hoare, J.L.** 2003a: Response of eucalyptus-dominated savanna to frequent fires: lessons from Munmarlary 1973-1996. *Ecological Monographs* 73, 349-375.
- Russell-Smith, J., Yates, C., Edwards, A., Cook, G.D., Cooke, P., Craig, R., Heath, B. and Smith, R.** 2003b: Contemporary fire regimes of northern Australia, 1997-2001: change since Aboriginal occupancy, challenges for sustainable development. *International Journal of Wildland Fire* 12, 283-297.

- Ryan, C.M. and Williams, M.** submitted: The effect of fire-induced tree mortality on savanna woodland tree populations.
- San Jose, J.J. and Farinas, M.R.** 1983: Changes in tree density and species composition in a protected Trachypogon savanna protected for 25 years. *Acta Oecologica* 12, 237-247.
- San Jose, J.J. and Farinas, M.R.** 1991: Temporal changes in the structure of a Trachypogon savanna protected for 25 years. *Acta Oecologica* 12, 237-248.
- San Jose, J.J. and Montes, R.A.** 1997: Fire effect on the co-existence of trees and grasses in savannas and the resulting outcome on organic matter budget. *Interciencia* 22, 289-298, 329-331.
- Sankaran, M., Ratnam, J. and Hanan, N.** 2008: Woody cover in African savannas: the role of resources, fire and herbivory. *Global Ecology and Biogeography* 17, 236-245.
- Santos, A.J.B., Silva, G.T.D.A., Miranda, H.S., Miranda, A.C. and Lloyd, J.** 2003: Effects of fire on surface carbon, energy and water vapour fluxes over campo sujo savanna in Central Brazil. *Functional Ecology* 17, 711-719.
- Savadogo, P., Zida, D., Sawadogo, L., Tiveau, D., Tigabu, M. and Oden, P.C.** 2007: Fuel and fire characteristics in a savanna-woodland of West Africa in relation to grazing and dominant grass type. *International Journal of Wildland Fire* 16, 531-539.
- Scholes, R.J., Bond, W.J., and Eckhardt, H.C.** 2003: Vegetation dynamics in the Kruger ecosystem. In Du Toit, J., Rogers, K.H. and Biggs, H.C., editors, *The Kruger experience: ecology and management of savanna heterogeneity*. New York, Island Press. 242-262.
- Schroeder, W.** 2005 : Characterising vegetation fire dynamics in Brazil through multisatellite data: common trends and practical issues. *Earth Interactions* 9,
- Schroeder, W., Prins, E., Giglio, L., Csiszar, I., Schmidt, C., Moritte, J. and Morton, D.** 2008: Validation of GOES and MODIS active fire detection products using ASTER and ETM-plus data. *Remote Sensing of the Environment* 112, 2711-2726.
- Schultz, M. G., Heil, A., Hoelzemann, J. J., Spessa, A., Thonicke, K., Goldammer, J. G., Held, A. C., Pereira, J.M.C. and van het Bolscher, M.** 2008: Global wildland fire emissions from 1960 to 2000. *Global Biogeochemical Cycles* 22(2).
- Shackleton, C.M. and Scholes, R.J.** 2000: Impact of fire frequency on woody community structure and soil nutrients in the Kruger National Park. *Koedoe* 43, 75-81.
- Silva, da.D.M. and Batalha, M.** 2008: Soil-vegetation relationships in cerrados under different fire frequencies. *Plant and Soil* 311, 87-96.
- Silva, J.F., Zambrano, A. and Farinas, M.R.** 2001: Increase in the woody component of seasonal savannas under different fire regimes in Calabozo, Venezuela. *Journal of Biogeography* 28, 977-983.
- Strang, R.M.** 1974: Some man-made changes in successional trends on the Rhodesian highveld. *Journal of Applied Ecology*, 11, 249-263.
- Swaine, M.D.** 1992: Characteristics of dry forest in West Africa and the influence of fire. *Journal of Vegetation Science* 3, 365-374.
- Swaine, M.D., Hawthorne, W.D. and Orgle, T.K.** 1992: The effects of fire exclusion on savanna vegetation at Kpong, Ghana. *Biotropica* 24, 166-172.
- Thompson, J.G. and Purves, W.D.** 1978: *A guide to the soils of Rhodesia*. Rhodesia Agricultural Journal Technical Handbook No.3. Salisbury, Rhodesia.

- Toit, J.du., Rogers, K.H. and Biggs, H.C.**, editors, *The Kruger experience: ecology and management of savanna heterogeneity*. New York, Island Press.
- Traore, S., Nygard, R., Guinko, S. and Lepage, M.** 2008: Impact of *Macrotermes termitaria* as a source of heterogeneity on tree diversity and structure in a Sudanian savannah under controlled grazing and annual prescribed fire (Burkina Faso). *Forest Ecology and Management* 255, 2337-2346.
- Trapnell, C.G.** 1959: Ecological results of woodland burning in Northern Rhodesia. *Journal of Ecology* 47, 129-168.
- Trollope, W.S.W.** 1984: Fire in savanna. In Booyesen, P.de V. and Tainton, B.M. editors, *Ecological effects of fire in South African ecosystems*. Berlin, Springer-Verlag. 149-175.
- Trollope, W.S.W.** 1982: Ecological effects of fire in South African savannas, in Huntley, B.J. and Walker, B.H., editors, *Ecology of tropical Savannas*, Berlin, Springer-Verlag. 292-306.
- Trollope, W.S.W., Potgieter, A.L.F. and Zambatis, N.** 1995: Effect of fire intensity on the mortality and topkill of bush in the Kruger National Park in South Africa. *Bulletin of the Grassland Society of Southern Africa* 6,66.
- Van de Vijver, C.A.D.M., Foley, C.A. and Olf, H.** 1999: Changes in the woody component of an East African savanna during 25 years. *Journal of Tropical Ecology* 15, 545-564.
- Van Langevelde, F., Van de Vijver, C.A.D.M., Kumar, L., Van de Koppel, J., de Ridder, N., Van Andel, J., Skidmore, A.K., Hearne, J.W., Stroosnijder, L., Bond, W.J., Prins, H.H.T. and Rietkerk, M.** 2003: Effects of fire and herbivory on the stability of savanna ecosystems. *Ecology* 84, 337-350.
- Van Wilgen, B.W., Govender, N. and Biggs, H.C.** 2007: The contribution of fire research to fire management: a critical review of a long-term experiment in the Kruger National Park, South Africa. *International Journal of Wildland Fire* 16, 519-530.
- Van Wilgen, B.W., Trollope, W.S.W., Biggs, H.C., Potgieter, A.L.F. and Brockett, B.H.** 2003: Fire as a driver of ecosystem variability. In Du Toit, J., Rogers, K.H. and Biggs, H.C., editors, *The Kruger experience: ecology and management of savanna heterogeneity*. New York, Island Press. 149-170.
- Verbesselt, J., Somers, B., Lhermitte, S., Jonckheere, I., van Aardt, J. and Coppin, P.** 2007: Monitoring herbaceous fuel moisture content with SPOT VEGETATION time series for fire risk prediction in savanna. *Remote Sensing of Environment* 108, 357-368.
- Vogl, R.J.** 1974: Effects of fire on grasslands. In Kozlowski, T.T.T. and Ahlgren, C.E. editors, *Fire and ecosystems*. New York, Academic Press. 7-45.
- West, O.** 1972: *Fire, man and wildlife as interacting factors limiting the development of climax vegetation in Rhodesia*. Proceedings of the Tall Timbers Fire Ecology Conference. Florida, Tallahassee. 121-146.
- Whitehead, P.J., Russell-Smith, J. and Woinarski, J.C.Z.** 2005: Fire, landscape heterogeneity and wildlife management in Australia's tropical savannas: introduction and overview. *Wildlife Research* 32, 369-375.
- Williams, M., Ryan, C.M., Rees, R.M., Sarnbane, E., Fernando, J. and Grace, J.** 2008: Carbon sequestration and biodiversity of re-growing miombo woodlands in Mozambique. *Forest Ecology and Management* 254, 145-155.
- Williams, P.R., Congdon, R.A., Grice, A.C. and Clarke, P.J.** 2003a: Fire related cues break seed dormancy of six legumes of tropical eucalyptus savannas in north-east Australia. *Austral Ecology* 28, 507-514.

**Williams, P.R., Congdon, R.A., Grice, A.C. and Clarke, P.J.** 2003b: Effect of fire regime on plant abundance in a tropical eucalypt savanna of north-eastern Australia. *Austral Ecology* 28, 327-338.

**Williams, P.R., Congdon, R.A., Grice, A.C. and Clarke, P.J.** 2004: Soil temperature and depth of legume germination during early and late dry season fires in a tropical eucalypt savanna of north-eastern Australia. *Austral Ecology* 29, 258-263.

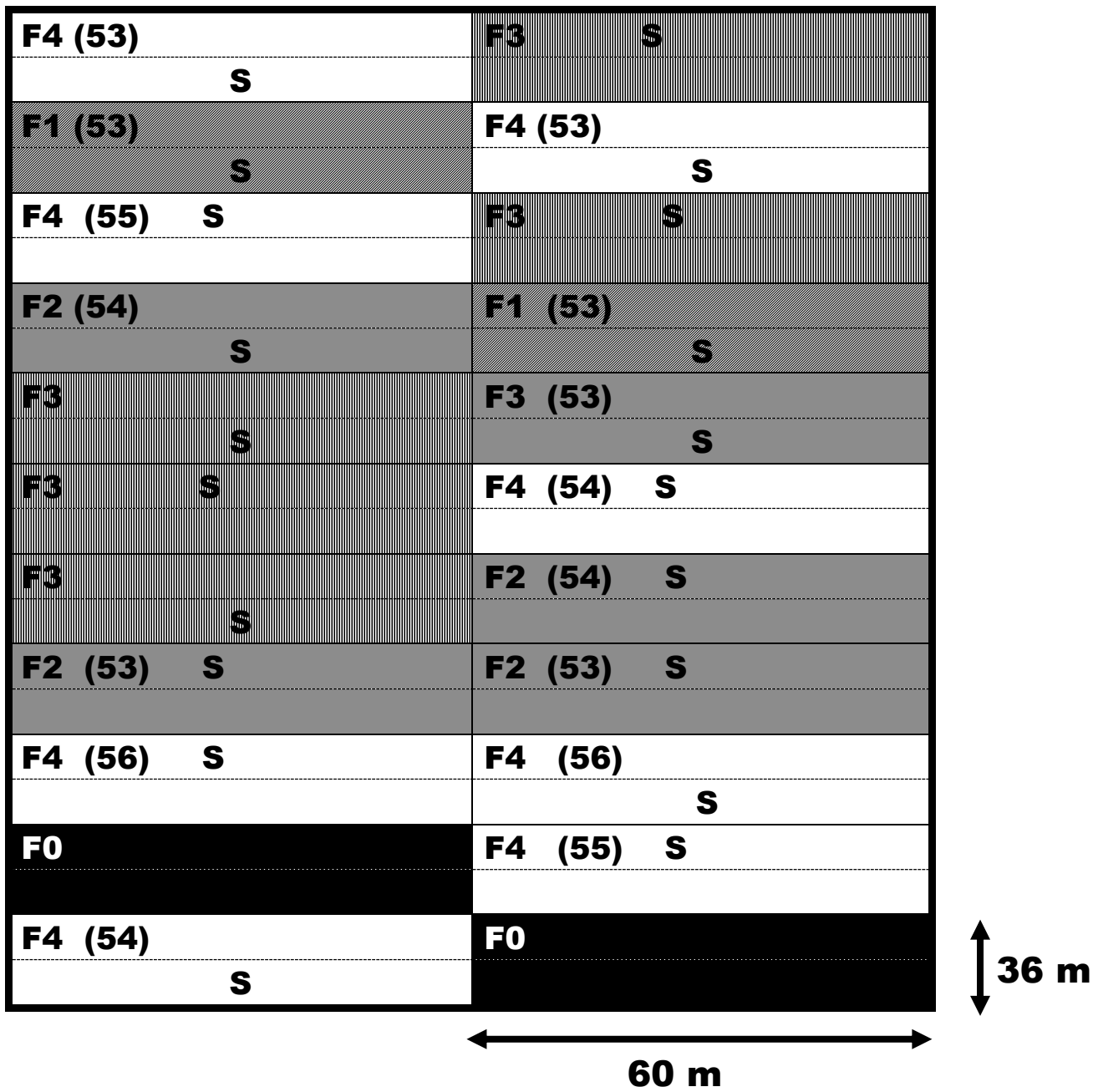
**Williams, R.J., Woinarski, C.J.Z. and Andersen, A.N.** 2003: Fire experiments in northern Australia: contributions to ecological understanding and biodiversity conservation in tropical savannas. *International Journal of Wildland Fire* 12, 391-402.

**Woinarski, J.C.Z., Risler, J. and Kean, L.** 2004: Response of vegetation and vertebrate fauna to 23 years of fire exclusion in a tropical Eucalyptus open forest, Northern territory, Australia. *Austral Ecology* 29, 156-176.

**Woods, D., Potgieter, A., Landmann, T. and Govender, N.** 2002: Fire policy. Experiments and experience in the Kruger National Park, South Africa. Southern African fire network (SAFNet). Gaborone, Botswana. *South African Journal of Science* 96, 167-178.



Figure 1 Marondera Site Plan

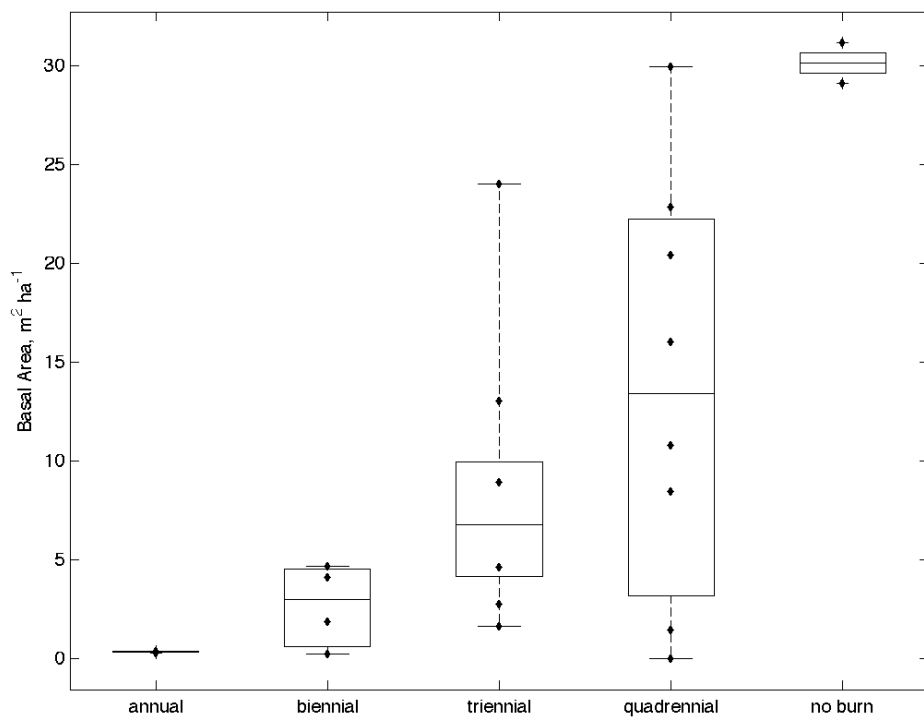
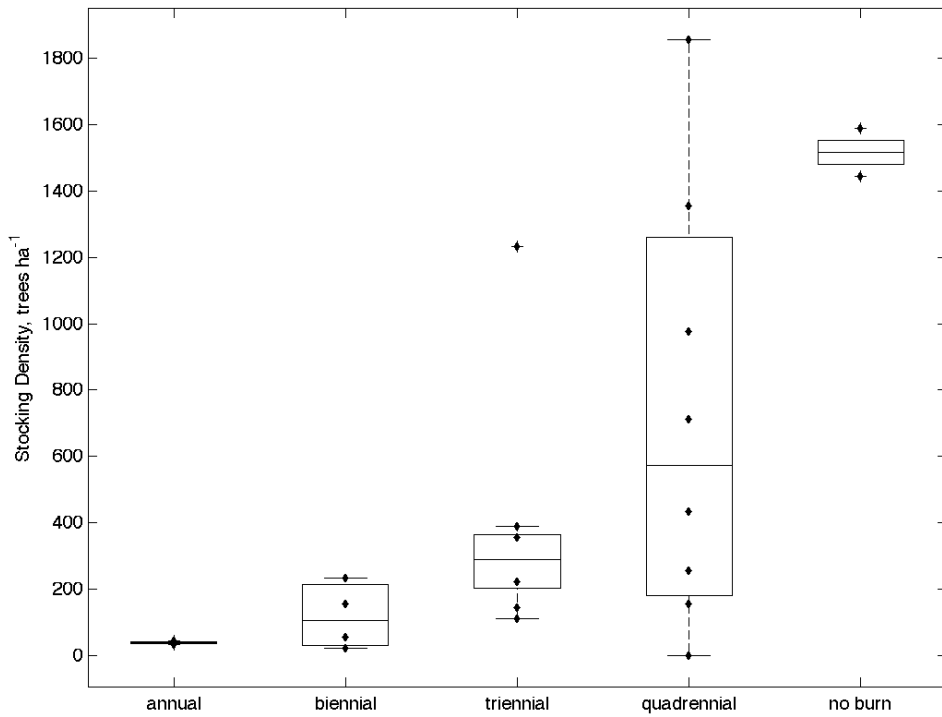


Key

<b>F0</b>	No burning
<b>F1</b>	Annual burn
<b>F2</b>	Burn every 2 years
<b>F3</b>	Burn every 3 years
<b>F4</b>	Burn every 4 years

**S = Cut and burned**

**Figure 2 Basal area and stocking density in 2007 for live trees > 20 cm DBH**



**Figure 3**  
Fig 3 a

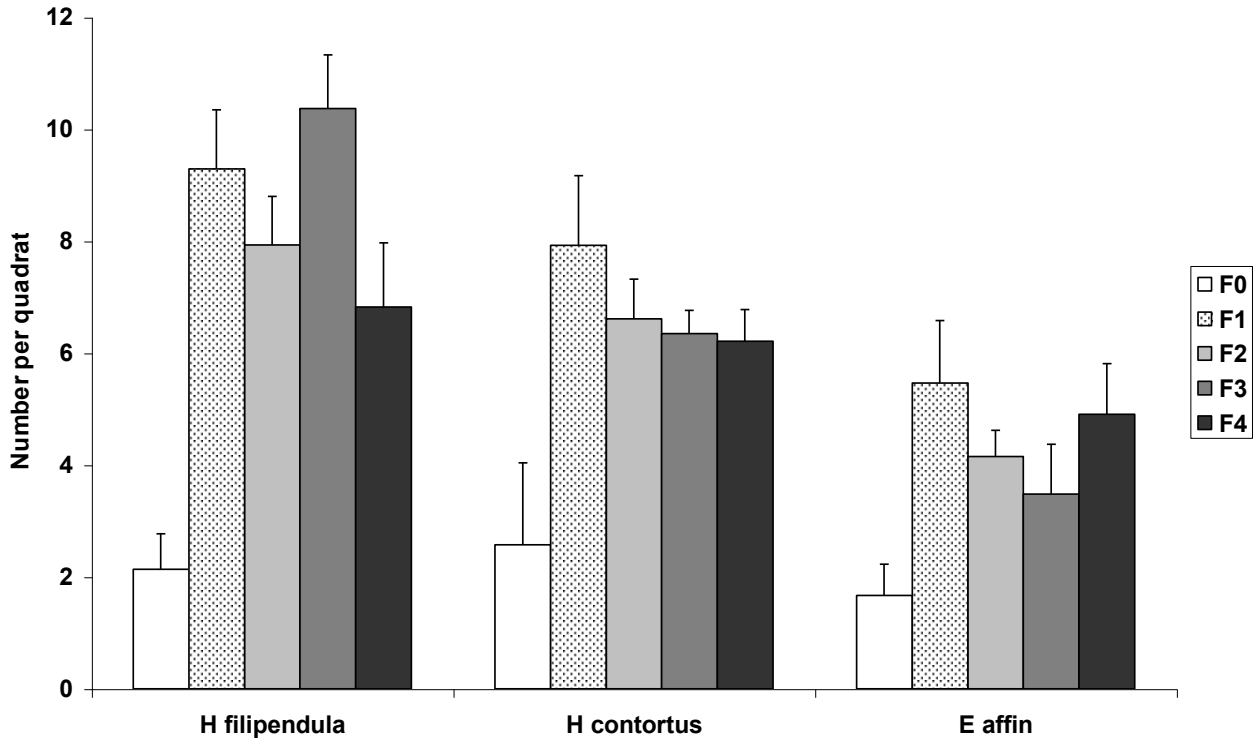
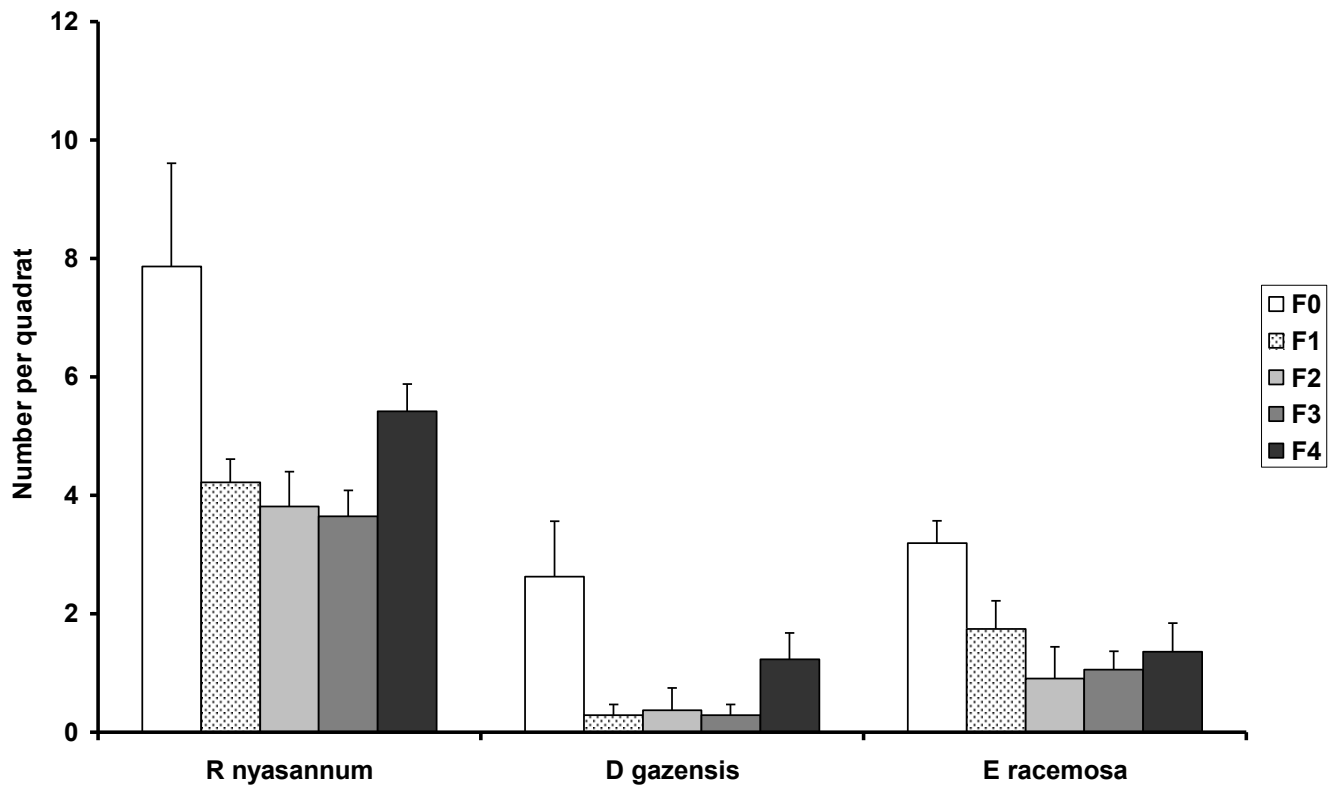


Fig 3 b



**Table 1:** Effect of frequency of burning on tree height in 1962 and 2007

Fire Treatment	Average Tree Height (m)	
	1962	2007
F0 (protected)	2.83	15.0
F1 (annual burn)	0.18	6.7
F2 (biennial burn)	0.46	11.3
F3 (triennial burn)	0.88	11.2
F4 (quadriennial burn)	0.27	10.6
Significance	P<0.01	P=0.46

**Table 2:** Effect of frequency of burning on numbers of three grass species

Fire Treatment	<i>Trachypogon spicatus</i>	<i>Andropogon spp</i>	<i>Crasspedhorachis qfricana</i>
FO	1.13	1.01	2.56
F1	2.24	2.85	3.57
F2	1.02	1.60	7.96
F3	0.33	0.20	5.29
F4	1.93	4.82	3.74
Significance	*	*	*
SED	0.63	0.91	1.34
LSD	1.34	1.96	2.87

\*significant at  $p < 0.05$

**Table 3:** Effect of frequency of burning on numbers of three selected species

Fire Treatment	Sedges	<i>Rhytichelytrum repens</i>	<i>Nidorela uricrata</i>
FO	3.64	1.89	3.95
F1	0.69	1.93	1.87
F2	1.53	1.59	2.99
F3	1.12	2.74	4.75
F4	1.71	1.76	3.49
Significance	NS	NS	NS

