



# THE UNIVERSITY *of* EDINBURGH

## Edinburgh Research Explorer

### Genome-wide survey of SNP variation uncovers the genetic structure of cattle breeds

**Citation for published version:**

Gibbs, RA, Taylor, JF, Van Tassell, CP, Barendse, W, Eversole, KA, Gill, CA, Green, RD, Hamernik, DL, Kappes, SM, Lien, S, Matukumalli, LK, McEwan, JC, Nazareth, LV, Schnabel, RD, Weinstock, GM, Wheeler, DA, Ajmone-Marsan, P, Boettcher, PJ, Caetano, AR, Garcia, JF, Hanotte, O, Mariani, P, Skow, LC, Sonstegard, TS, Williams, JL, Diallo, B, Hailemariam, L, Martinez, ML, Morris, CA, Silva, LOC, Spelman, RJ, Mulatu, W, Zhao, K, Abbey, CA, Agaba, M, Araujo, FR, Bunch, RJ, Burton, J, Gorni, C, Olivier, H, Harrison, BE, Luff, B, Machado, MA, Mwakaya, J, Plastow, G, Sim, W, Smith, T, Thomas, MB, Valentini, A, Woolliams, JA & Bovine HapMap Consortium 2009, 'Genome-wide survey of SNP variation uncovers the genetic structure of cattle breeds' *Science*, vol. 324, no. 5926, pp. 528-32. DOI: 10.1126/science.1167936

**Digital Object Identifier (DOI):**

[10.1126/science.1167936](https://doi.org/10.1126/science.1167936)

**Link:**

[Link to publication record in Edinburgh Research Explorer](#)

**Document Version:**

Peer reviewed version

**Published In:**

Science

**General rights**

Copyright for the publications made accessible via the Edinburgh Research Explorer is retained by the author(s) and / or other copyright owners and it is a condition of accessing these publications that users recognise and abide by the legal requirements associated with these rights.

**Take down policy**

The University of Edinburgh has made every reasonable effort to ensure that Edinburgh Research Explorer content complies with UK legislation. If you believe that the public display of this file breaches copyright please contact [openaccess@ed.ac.uk](mailto:openaccess@ed.ac.uk) providing details, and we will remove access to the work immediately and investigate your claim.





Published in final edited form as:

Science. 2009 April 24; 324(5926): 528–532. doi:10.1126/science.1167936.

## Genome-Wide Survey of SNP Variation Uncovers the Genetic Structure of Cattle Breeds

The Bovine HapMap Consortium\*

### Abstract

The imprints of domestication and breed development on the genomes of livestock likely differ from those of companion animals. A deep draft sequence assembly of shotgun reads from a single Hereford female and comparative sequences sampled from six additional breeds were used to develop probes to interrogate 37,470 single-nucleotide polymorphisms (SNPs) in 497 cattle from 19 geographically and biologically diverse breeds. These data show that cattle have undergone a rapid recent decrease in effective population size from a very large ancestral population, possibly due to bottlenecks associated with domestication, selection, and breed formation. Domestication and artificial selection appear to have left detectable signatures of selection within the cattle genome, yet the current levels of diversity within breeds are at least as great as exists within humans.

---

The emergence of modern civilization was accompanied by adaptation, assimilation, and interbreeding of captive animals. In cattle (*Bos taurus*), this resulted in the development of individual breeds differing in, for example, milk yield, meat quality, draft ability, and tolerance or resistance to disease and pests. However, despite mapping and diversity studies (1–5) and the identification of mutations affecting some quantitative phenotypes (6–8), the detailed genetic structure and history of cattle are not known.

Cattle occur as two major geographic types, the taurine (humpless—European, African, and Asian) and indicine (humped—South Asian, and East African), which diverged >250 thousand years ago (Kya) (3). We sampled individuals representing 14 taurine ( $n = 376$ ), three indicine ( $n = 73$ ) (table S1), and two hybrid breeds ( $n = 48$ ), as well as two individuals each of *Bubalus quarlesi* and *Bubalus bubalis*, which diverged from *Bos taurus* ~1.25 to 2.0 Mya (9,10). All breeds except Red Angus ( $n = 12$ ) were represented by at least 24 individuals. We preferred individuals that were unrelated for  $\geq 4$  generations; however, each breed had one or two sire, dam, and progeny trios to allow assessment of genotype quality.

Single-nucleotide polymorphisms (SNPs) that were polymorphic in many populations were primarily derived by comparing whole-genome sequence reads representing five taurine and one indicine breed to the reference genome assembly obtained from a Hereford cow (10) (table S2). This led to the ascertainment of SNPs with high minor allele frequencies (MAFs) within the discovery breeds (table S5). Thus, as expected, with trio progeny removed, SNPs discovered within the taurine breeds had higher average MAFs within the taurine than the indicine breeds, and vice versa (table S5); about 30% of SNPs had MAFs >0.3 within the

---

\*The full list of authors with their contributions and affiliations is included at the end of the manuscript.

Supporting Online Material

[www.sciencemag.org/cgi/content/full/324/5926/528/DC1](http://www.sciencemag.org/cgi/content/full/324/5926/528/DC1)

Materials and Methods

Figs. S1 to S27

Tables S1 to S9

References

taurine breeds, whereas only about 19% had MAFs >0.3 within the indicine breeds (table S4). The proportions of SNPs in intergenic, intronic, and exonic regions were 63.74, 34.9, and 1.35%, respectively, similar to their representation within the genome. We found that as few as 50 SNPs were necessary for parentage assignment and proof of identity (table S9). Additionally, when we compared ancestries based on pedigree and allele-sharing between individuals, we were able to predict accurately the extent of ancestry when the pedigree was not known (fig. S24), which could be a useful tool for the management of endangered bovine populations.

To examine relatedness among breeds, we analyzed SNP genotype frequencies with InSTRUCT (11) and performed principal component analysis (PCA) using Eigenstrat (12) (Fig. 1 and fig. S27). Varying the number of presumed ancestral populations ( $K$ ) within InSTRUCT revealed clusters consistent with the known history of cattle breeds (Fig. 1A). The first level of clustering ( $K = 2$ ) reflects the primary, predomestication division of taurine from indicine cattle. Consequently, breeds derived from indicine and taurine crosses (Beefmaster, Santa Gertrudis, and Sheko) show signatures of admixture with both approaches. At  $K = 3$ , the African breeds N'Dama and Sheko separate from the European breeds—a division that reflects an early, possibly predomestication, divergence. PCA recapitulated these findings (Fig. 1B). At higher levels of  $K$ , we observed clusters that identify single breeds as closed endogamous breeding units. For example, at  $K = 9$ , Jersey, Hereford, Romagnola, and Guernsey each form unique clusters.

If modern breeds arose from bottlenecks from a large ancestral population, we should detect bottleneck signatures within patterns of linkage disequilibrium (LD) and effective population size. We found that the decline of  $r^2$  with genetic distance varied among breeds, although the decline was generally rapid (fig. S10). The extent of LD in cattle is greater than human (13) but less than dog (14). The Jersey and Hereford breeds had higher  $r^2$  than other breeds across the range of distances separating loci. N'Dama had the highest  $r^2$  values at short distances and the lowest  $r^2$  at long distances, which suggested that they were derived from a relatively small ancestral population not subjected to very narrow bottlenecks. The indicine breeds had lower  $r^2$  values at short distances and intermediate  $r^2$  values at longer distances, which indicated that their ancestral population was much larger than that from which taurine cattle were domesticated (Fig. 2). As the MAFs for utilized SNPs were generally high and the estimates of LD did not require phased chromosomes, these results should be robust.

When breeds were combined, the decline in LD was more rapid, which reflected a lack of conserved phase relations across breeds. We characterized the extent of haplotype-sharing among breeds between pairs of adjacent SNPs using the  $r$  statistic. A high correlation between  $r$  values between two breeds indicates that the same haplotypes tend to persist within both breeds. Correlations between  $r$  values for SNPs separated by 10 kb were high among the taurine and indicine breeds but were low between these groups (fig. S11). Once SNPs are separated by 100 to 250 kb, we found little haplotype sharing between breeds. Clearly, phase relations dissipated as populations diverged despite the relatively young origin of all breeds. Breeds known to have a recent shared ancestry, notably, Angus and Red Angus; Holstein and Norwegian Red; and Beefmaster and Santa Gertrudis, showed a high correlation among  $r$  values for SNPs separated by 100 to 250 kb.

Breeds were expected to differ for effective population sizes ( $N_e$ ) on the basis of differences in the decline of  $r^2$  with genetic distance (13). We estimated  $N_e$  at various times in each breed's history by setting average  $r^2$  values equal to their expectation (15) (Fig. 2 and table S1).  $N_e$  has recently declined for all breeds, which reflects bottlenecks associated with domestication, breed formation, and, in some breeds, recent intense selection for milk or beef production. In contrast, human  $N_e$  has expanded exponentially over the same period (inset to Fig. 2).

A smaller  $N_e$  suggests lower genetic diversity, which is of concern for species viability. To assess genetic diversity free from SNP ascertainment bias, we used the polymerase chain reaction to amplify and sequence 119 closely spaced fragments from five genomic regions on two chromosomes. Two of these regions were known to harbor quantitative trait loci (QTL). Following the amplification of these regions from 18 Angus, 16 Holstein, and 5 Brahman, the individual segments were Sanger-sequenced to detect SNPs. Of the 1201 discovered SNP, only 258 were common to taurine and indicine breeds, consistent with their age of divergence. Remarkably, 569 SNP (47.4%) were unique to Brahman, and 365 SNP (30.4%) were found only in Angus or Holstein, with 169 SNP (46.3%) common to both breeds. This suggests that breeds represent partly overlapping sub-samples within the taurine diversity. However, seven times as many taurine animals had to be sequenced to uncover 75.3% as many SNPs as were discovered in indicine animals. Estimates of the unascertained genomic distributions of SNPs by MAFs within taurine and indicine breeds are in fig. S19.

Diversities as measured by the population mutation rate ( $\theta$ ) and pairwise nucleotide heterozygosity ( $\pi$ ) were also estimated for the 119 fragments and compared between the three breeds (Fig. 3). Angus and Holstein have similar levels of nucleotide diversity measured by both statistics ( $\sim 1.4 \times 10^{-3}$ ) and have  $\sim 40\%$  more nucleotide variation than is found in human populations ( $\sim 1.0 \times 10^{-3}$ ). Brahman variation was even higher, with average estimates of  $\theta$  and  $\pi$  of  $3.35 \times 10^{-3}$  and  $2.74 \times 10^{-3}$ , respectively. These correspond to densities of 1 SNP every 714 bp for pairs of Angus or Holstein chromosomes and 1 SNP every 285 bp for pairs of Brahman chromosomes. These results demonstrate that genetic diversity in cattle is not low despite the decline in  $N_e$ .

The lower genetic diversity within modern taurine cattle could reflect a lower diversity within the predomestication ancestral population, and/or postdomestication effects of stronger bottlenecks at breed formation and stronger selection for docility and productivity. Selection is unlikely to be the primary cause, because the diversity distributions for  $\theta$  and  $\pi$  were similar for all five sequenced regions, and only one region revealed a signature of selection. On the other hand, Fig. 2 suggests that the predomestication  $N_e$  of indicine cattle, which originated in southern Asia, a center of species diversity, was much larger than that of taurine cattle. Finally, the process of breed formation in European taurine cattle involved sequential limited migrations from the center of domestication in west Asia (5). Diversity declines with distance from primary sites of domestication (4) and ancient DNA from domesticated cattle and aurochs in Europe show that there was essentially no gene flow from the aurochs into domesticated cattle (5). Therefore, the evidence suggests that the current difference in diversity is mainly due to progenitor population diversity and bottleneck effects at, and before, breed formation rather than differences in the intensity of natural or artificial selection postdomestication.

Cattle have been marked by selection during domestication, breed formation, and ongoing selection to enhance performance and productivity. We utilized three methods to detect genomic selection in cattle: (i) the iHS statistic, which identifies regions of increased local LD (16) suggestive of directional selection; (ii) the  $F_{ST}$  statistic, a measure of the degree of differentiation between subpopulations (17); and (iii) the composite likelihood ratio test (CLR) (18), which assumes a selective sweep model (10). The iHS method was limited by low SNP density and our inability to completely specify ancestral SNP allele states (10). However, despite these limitations, we found evidence for selective sweeps on chromosomes 2, 6, and 14 (table S8 and fig. S20). We identified selection near *MSTN*, in which mutations can cause double muscling (6). Similarly, high iHS values were found in the region near *ABCG2* in which mutations cause differences in milk yield and composition (8). A peak in iHS values was also identified within a gene poor region of chromosome 14 adjacent to a region containing genes from *KHDRBS3* to *TG*, associated with intramuscular fat content in beef (19).

Calculation of  $F_{ST}$  across all populations for each SNP detected both balancing and divergent selection (fig. S20). Some of the highest and lowest average  $F_{ST}$  values were found in genes associated with behavior, the immune system, and feed efficiency (Table 1). Domestication most likely required the selection of smaller and more docile animals that could resist pathogens and adapt to a human-controlled environment (20). One region under selection contains *R3HDMI* and is associated with efficient food conversion and intramuscular fat content in some breeds (2). In addition to the *R3HDMI* gene (21), this region is also under selection in Europeans, most likely because it contains *LCT*, mutations of which allow the digestion of lactose in adults (22). These results suggest that mutations in this region may affect energy homeostasis. Furthermore, we detected selection between beef and dairy breeds with both CLR and iHS, represented by a broad, high  $F_{ST}$  peak across the region, centered on *SPOCK1* (Table 1). As several QTL have been mapped to this region, multiple loci could be under divergent selection (1), although this peak does not encompass *CAST*, which affects meat quality (23).

Our high resolution examination of cattle shows that unlike the dog—which has restricted diversity and high levels of inbreeding—domesticated cattle had a large ancestral population size and that more aurochs must have been domesticated than wolves; reducing the severity of the domestication bottleneck. SNP diversity within taurine breeds was similar to that of humans, but was significantly less than diversity within indicine breeds, which suggested that the Indian subcontinent was a major site of cattle domestication and predomestication diversity. Selection first for domestication and then for agricultural specialization have apparently reduced breed effective population sizes to relatively small numbers. The recent decline in diversity is sufficiently rapid that loss of diversity should be of concern to animal breeders. Despite this, population levels of LD are unexpectedly low considering the relatively small  $N_e$ , which indicates that effective population sizes were much larger in the very recent past.

## Supplementary Material

Refer to Web version on PubMed Central for supplementary material.

## References and Notes

1. Kappes SM, et al. *J Anim Sci* 2000;78:3053. [PubMed: 11132819]
2. Barendse W, et al. *Genetics* 2007;176:1893. [PubMed: 17507676]
3. Bradley DG, et al. *Proc Natl Acad Sci USA* 1996;93:5131. [PubMed: 8643540]
4. Loftus RT, et al. *Mol Ecol* 1999;8:2015. [PubMed: 10632853]
5. Edwards CJ, et al. *Proc R Soc London B Biol Sci* 2007;274:1377.
6. Grobet L, et al. *Nat Genet* 1997;17:71. [PubMed: 9288100]
7. Grisart B, et al. *Genome Res* 2002;12:222. [PubMed: 11827942]
8. Cohen-Zinder M, et al. *Genome Res* 2005;15:936. [PubMed: 15998908]
9. Schreiber A, et al. *J Hered* 1999;90:165. [PubMed: 9987926]
10. Materials and methods are available as supporting materials on *Science Online*.
11. Gao H, Williamson S, Bustamante CD. *Genetics* 2007;176:1635. [PubMed: 17483417]
12. Patterson N, Price AL, Reich D. *PLoS Genet* 2006;2:e190. [PubMed: 17194218]
13. Tenesa A, et al. *Genome Res* 2007;17:520. [PubMed: 17351134]
14. Lindblad-Toh K, et al. *Nature* 2005;438:803. [PubMed: 16341006]
15. Sved JA. *Theor Popul Biol* 1971;2:125. [PubMed: 5170716]
16. Voight BF, Kudaravalli S, Wen X, Pritchard JK. *PLoS Biol* 2006;4:e72. [PubMed: 16494531]
17. Akey JM, Zhang G, Zhang K, Jin L, Shriver MD. *Genome Res* 2002;12:1805. [PubMed: 12466284]
18. Nielsen R, et al. *Genome Res* 2005;15:1566. [PubMed: 16251466]
19. Barendse W, et al. *Aust J Exp Agric* 2004;44:669.



20. Clutton-Brock, J. A Natural History of Domesticated Mammals. Vol. 2. Cambridge Univ. Press; Cambridge: 1999. p. 238
21. Sabeti PC, et al. Nature 2007;449:913. [PubMed: 17943131]
22. Tishkoff SA, et al. Nat Genet 2007;39:31. [PubMed: 17159977]
23. Barendse W, et al. Genetics 2007;176:2601. [PubMed: 17603104]
24. The Bovine Hapmap Consortium funded by the National Human Genome Research Institute of the National Institutes of Health, U.S. Department of Agriculture's Agricultural Research Service (USDA-ARS) and Cooperative State Research, Education and Extension Service (USDA CSREES), the Research Council of Norway, as well as: American Angus Association, American Hereford Association, American Jersey Cattle Association, AgResearch (New Zealand), Beef CRC and Meat and Livestock Australia for the Australian Brahman Breeders Association, Beefmaster Breeders United, The Brazilian Agricultural Research Corporation (Embrapa), Brown Swiss Association, Commonwealth Scientific and Industrial Research Organization, Dairy InSight, GENO Breeding and Artificial Insemination Association—Norway, Herd Book/France Limousin Selection, Holstein Association USA, International Atomic Energy Agency (IAEA)—United Nations Food and Agriculture Organization (FAO)/IAEA Vienna, International Livestock Research Institute—Kenya, Italian Piedmontese Breeders—Parco Tecnologico Padano, Italian Romagnola Society—Università Cattolica del Sacro Cuore, Livestock Improvement Corporation, Meat and Wool New Zealand, North American Limousin Foundation, Red Angus Association of America, Roslin Institute for UK Guernsey, and Sygen (now Genus). See SOM for additional acknowledgements. The genome sequence (AAFC03000000) and SNPs (SOM) are available from NCBI.

## Appendix

### The Bovine HapMap Consortium

**Overall project leadership:** Richard A. Gibbs,<sup>1,2\*</sup> Jeremy F. Taylor,<sup>3\*</sup> Curtis P. Van Tassell<sup>4\*</sup>

**HapMap project group leaders:** William Barendse,<sup>5,6</sup> Kellye A. Eversole,<sup>7</sup> Richard A. Gibbs,<sup>1,2</sup> Clare A. Gill,<sup>8</sup> Ronnie D. Green,<sup>9</sup> Debora L. Hamernik,<sup>10</sup> Steven M. Kappes,<sup>9</sup> Sigbjørn Lien,<sup>11</sup> Lakshmi K. Matukumalli,<sup>12,4</sup> John C. McEwan,<sup>13</sup> Lynne V. Nazareth,<sup>1,2</sup> Robert D. Schnabel,<sup>3</sup> Jeremy F. Taylor,<sup>3</sup> Curtis P. Van Tassell,<sup>4</sup> George M. Weinstock,<sup>1,2</sup> David A. Wheeler<sup>1,2</sup>

**Breed champions:** Paolo Ajmone-Marsan,<sup>14</sup> William Barendse,<sup>5,6</sup> Paul J. Boettcher,<sup>15</sup> Alexandre R. Caetano,<sup>16</sup> Jose Fernando Garcia,<sup>15,17</sup> Clare A. Gill,<sup>8</sup> Ronnie D. Green<sup>9</sup> (leader), Olivier Hanotte,<sup>18</sup> Sigbjørn Lien,<sup>11</sup> Paola Mariani,<sup>19</sup> John C. McEwan,<sup>13</sup> Loren C. Skow,<sup>20</sup> Tad S. Sonstegard,<sup>4</sup> Curtis P. Van Tassell,<sup>4</sup> John L. Williams<sup>19,21</sup>

**Pedigree analysis and breed sampling:** Alexandre R. Caetano,<sup>16</sup> Boubacar Diallo,<sup>22</sup> Ronnie D. Green,<sup>9</sup> Lemecha Hailemariam,<sup>23</sup> Olivier Hanotte,<sup>18</sup> Mario L. Martinez,<sup>24†</sup> Chris A. Morris,<sup>25</sup> Luiz O. C. Silva,<sup>26</sup> Richard J. Spelman,<sup>27</sup> Jeremy F. Taylor<sup>3</sup> (leader), Curtis P. Van Tassell<sup>4,28</sup> (leader), Woudyalew Mulatu,<sup>28</sup> Keyan Zhao<sup>29</sup>

**Sample acquisition and DNA preparation:** Colette A. Abbey,<sup>8</sup> Morris Agaba,<sup>18</sup> Flávio R. Araujo,<sup>26</sup> Rowan J. Bunch,<sup>5,6</sup> James Burton,<sup>30</sup> Clare A. Gill<sup>8</sup> (leader), Chiara Gorni,<sup>19</sup> Ronnie D. Green,<sup>9</sup> Hanotte Olivier,<sup>18</sup> Blair E. Harrison,<sup>5,6</sup> Sigbjørn Lien,<sup>11</sup> Bill Luff,<sup>31</sup> Marco A. Machado,<sup>24</sup> Paola Mariani,<sup>19</sup> John C. McEwan,<sup>13</sup> Chris A. Morris,<sup>25</sup> Joel Mwakaya,<sup>18</sup> Graham Plastow,<sup>32</sup> Warren Sim,<sup>5,6</sup> Loren C. Skow,<sup>20</sup> Timothy Smith,<sup>33</sup> Tad S. Sonstegard,<sup>4</sup> Richard J. Spelman,<sup>27</sup> Jeremy F. Taylor,<sup>3</sup> Merle B. Thomas,<sup>5,6</sup> Alessio Valentini,<sup>34</sup> Curtis P. Van Tassell,<sup>4</sup> Paul Williams,<sup>5</sup> James Womack,<sup>35</sup> John A. Woolliams<sup>21</sup>

**Genome assembly:** Yue Liu,<sup>1,2</sup> Xiang Qin,<sup>1,2</sup> Kim C. Worley<sup>1,2</sup> (leader)

**SNP discovery:** Chuan Gao,<sup>8</sup> Clare A. Gill,<sup>8</sup> Huaiyang Jiang,<sup>1,2</sup> Yue Liu,<sup>1,2</sup> Stephen S. Moore,<sup>32</sup> Lynne V. Nazareth,<sup>1,2</sup> Yanru Ren,<sup>1,2</sup> Xing-Zhi Song,<sup>1,2</sup> David A. Wheeler<sup>1,2</sup> (leader), Kim C. Worley<sup>1,2</sup>

**ENCODE resequencing:** Carlos D. Bustamante,<sup>29</sup> Ryan D. Hernandez,<sup>29</sup> Donna M. Muzny,<sup>1,2</sup> Lynne V. Nazareth,<sup>1,2</sup> Shobha Patil,<sup>1,2</sup> Yanru Ren,<sup>1,2</sup> Anthony San Lucas,<sup>1,2</sup> David A. Wheeler<sup>1,2</sup> (leader)

**Genotyping:** Qing Fu,<sup>1,2</sup> Matthew P. Kent,<sup>11</sup> Sigbjørn Lien,<sup>11</sup> Stephen S. Moore,<sup>32</sup> Lynne V. Nazareth<sup>1,2</sup> (leader), Richard Vega,<sup>1,2</sup> David A. Wheeler<sup>1,2</sup> (leader)

**Database & Web site development:** Colette A. Abbey,<sup>8</sup> Chuan Gao,<sup>8</sup> Clare A. Gill,<sup>8</sup> Ronnie D. Green,<sup>9</sup> Lakshmi K. Matukumalli<sup>12,4</sup> (leader), Aruna Matukumalli,<sup>4</sup> Sean McWilliam,<sup>5,6</sup> Curtis P. Van Tassell<sup>4</sup>

**QA/QC:** Colette A. Abbey,<sup>8</sup> Clare A. Gill,<sup>8</sup> Matthew P. Kent,<sup>11</sup> Sigbjørn Lien,<sup>11</sup> Lakshmi K. Matukumalli<sup>12,4</sup> (leader), Robert D. Schnabel<sup>3</sup> (leader), Gert Sclep,<sup>19</sup> Jeremy F. Taylor<sup>3</sup>

**Allele frequency analysis:** Paolo Ajmone-Marsan,<sup>14</sup> Katarzyna Bryc,<sup>29</sup> Carlos D. Bustamante<sup>29</sup> (leader), Jungwoo Choi,<sup>8</sup> Hong Gao,<sup>29</sup> John J. Grefenstette,<sup>12</sup> Lakshmi K. Matukumalli<sup>12,4</sup> (leader), Brenda Murdoch,<sup>32</sup> Stephen S. Moore,<sup>32</sup> Lynne V. Nazareth<sup>1,2</sup> (leader), Alessandra Stella,<sup>19</sup> Curtis P. Van Tassell,<sup>4</sup> Rafael Villa-Angulo,<sup>12</sup> David A. Wheeler<sup>1,2</sup> (leader), Mark Wright<sup>29</sup>

**Map data provision and analysis:** Jan Aerts,<sup>21,36</sup> Oliver Jann,<sup>21</sup> Lakshmi K. Matukumalli,<sup>12,4</sup> Riccardo Negrini,<sup>14</sup> Tad S. Sonstegard,<sup>4</sup> John L. Williams<sup>19,21</sup>

**Haplotype estimation:** Paolo Ajmone-Marsan,<sup>14</sup> John J. Grefenstette<sup>12</sup> (leader), Lakshmi K. Matukumalli,<sup>12,4</sup> Riccardo Negrini,<sup>14</sup> Robert D. Schnabel,<sup>3</sup> Jeremy F. Taylor,<sup>3</sup> Rafael Villa-Angulo<sup>12</sup>

**Long-range LD analysis:** John J. Grefenstette,<sup>12</sup> Lakshmi K. Matukumalli,<sup>12,4</sup> Curtis P. Van Tassell<sup>4</sup> (leader), Rafael Villa-Angulo<sup>12</sup>

**LD persistence across breeds:** Mike E. Goddard,<sup>37,38</sup> Ben J. Hayes<sup>37</sup> (leader)

**Selective sweeps:** William Barendse<sup>5,6</sup> (leader), Daniel G. Bradley,<sup>39</sup> Paul J. Boettcher,<sup>15</sup> Carlos D. Bustamante,<sup>29</sup> Jungwoo Choi,<sup>8</sup> Marcos Barbosa da Silva,<sup>4,24</sup> Clare A. Gill,<sup>8</sup> Lilian P. L. Lau,<sup>39</sup> George E. Liu,<sup>4</sup> David J. Lynn,<sup>39,40</sup> Francesca Panzitta,<sup>19</sup> Gert Sclep,<sup>19</sup> Mark Wright<sup>29</sup>

**Applications:** Carlos D. Bustamante<sup>29</sup> (leader), Ken G. Dodds,<sup>13</sup> John C. McEwan<sup>13</sup> (leader), Jeremy F. Taylor<sup>3</sup> (leader), Curtis P. Van Tassell<sup>4</sup>

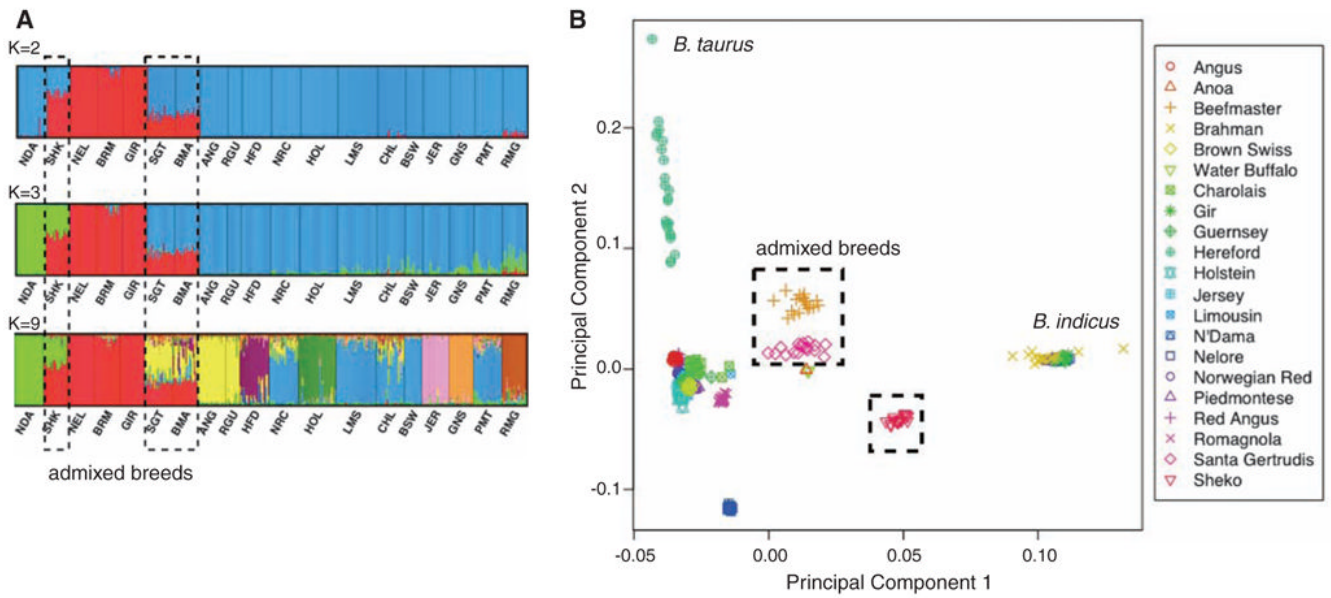
<sup>1</sup>Human Genome Sequencing Center, Baylor College of Medicine, One Baylor Plaza, Houston, TX 77030, USA. <sup>2</sup>Department of Molecular and Human Genetics, Baylor College of Medicine, One Baylor Plaza, Houston, TX 77030, USA. <sup>3</sup>Division of Animal Sciences, University of Missouri, 920 East Campus Drive, Columbia, MO 65211–5300, USA. <sup>4</sup>Bovine Functional Genomics Laboratory, U.S. Department of Agriculture (USDA) Agricultural Research Service (USDA–ARS), Beltsville Agricultural Research Center (BARC)–East, Beltsville, MD 20705, USA. <sup>5</sup>Commonwealth Scientific and Industrial Research Organization (CSIRO), Livestock Industries, 306 Carmody Road, St. Lucia, Queensland 4067, Australia. <sup>6</sup>Cooperative Research Center (CRC) for Beef Genetic Technologies, University of New England, Armidale, NSW 2351, Australia. <sup>7</sup>Alliance for Animal Genome Research, 5207 Wyoming Road, Bethesda, MD 20816, USA. <sup>8</sup>Department of Animal Science, Texas A&M University, 2471 TAMU, College

Station, TX 77843–2471, USA. <sup>9</sup>National Program Staff, USDA–ARS, 5601 Sunnyside Avenue, Beltsville, MD 20705, USA. <sup>10</sup>USDA Cooperative State Research, Education, and Extension Service, 1400 Independence Avenue, SW, Washington, DC 20250–2220, USA. <sup>11</sup>Centre for Integrative Genetics and Department of Animal and Aquacultural Sciences, Norwegian University of Life Sciences, Arboretveien 6, Ås 1432, Norway. <sup>12</sup>Department of Bioinformatics and Computational Biology, George Mason University, 10900 University Boulevard, Manassas, VA 20110, USA. <sup>13</sup>Animal Genomics, AgResearch, Invermay, Post Box 50034, Mosgiel 9053, New Zealand. <sup>14</sup>Istituto di Zootecnica, Università Cattolica del Sacro Cuore, via East Parmense, 84, Piacenza 29100, Italy. <sup>15</sup>Joint United Nations Food and Agriculture Organization (FAO)–International Atomic Energy Agency (IAEA), Division of Nuclear Techniques in Food and Agriculture, IAEA, Post Office Box 100, Wagramerstrasse 5, Vienna A1400, Austria. <sup>16</sup>Embrapa Genetic Resources and Biotechnology Center, Final Avenida W/5 Norte, Brasília, DF 70770-900, Brazil. <sup>17</sup>Universidade Estadual Paulista (UNESP), Department of Animal Production and Health, IAEA Collaborating Centre in Animal Genomics and Bioinformatics, Aracatuba, SP 16050-680, Brazil. <sup>18</sup>Animal Genetics Resources Characterization, International Livestock Research Institute, Post Office Box 30709, Nairobi 00100, Kenya. <sup>19</sup>Parco Tecnologico Padano, Via Einstein, Polo Universitario, Lodi 26900, Italy. <sup>20</sup>Department of Veterinary Integrative Biological Sciences, College of Veterinary Medicine and Biomedical Sciences, Texas A&M University, College Station, TX 77843–4461, USA. <sup>21</sup>The Roslin Institute, Royal (Dick) School of Veterinary Studies, The University of Edinburgh, Roslin, Midlothian, E25 9PS, UK. <sup>22</sup>Direction Nationale de l'Élevage, Post Office Box 559, Conakry, Guinea. <sup>23</sup>Ethiopian Institute of Agricultural Research, Post Office Box 2003, Addis Ababa, Ethiopia. <sup>24</sup>Embrapa Dairy Cattle Center, Rua Eugênio do Nascimento, 610, Juiz de Fora, MG 36038-330, Brazil. <sup>25</sup>Animal Genomics, AgResearch, Ruakura, Post Box 3123, Hamilton 3240, New Zealand. <sup>26</sup>Embrapa Beef Cattle Center, Rod. BR 262, km 4, Campo Grande, MS 79002-970, Brazil. <sup>27</sup>Research and Development, LIC, Post Box 3016, Hamilton 3240, New Zealand. <sup>28</sup>Animal Genetics Resources Characterization, International Livestock Research Institute, Post Office Box 5689, Addis Ababa, Ethiopia. <sup>29</sup>Department of Biological Statistics and Computational Biology, Cornell University, 101 Biotechnology Building, Ithaca, NY 14853, USA. <sup>30</sup>Veterinary Biomedical Sciences, Royal (Dick) School of Veterinary Studies, The University of Edinburgh Summerhall, Edinburgh, EH9 1QH Scotland. <sup>31</sup>World Guernsey Cattle Federation, The Hollyhocks, 10 Clos des Goddards, Rue des Goddards, Castel, Guernsey, GY5 7JD, Channel Islands, UK. <sup>32</sup>Agricultural Food and Nutritional Science, University of Alberta, 410 AgFor Centre, Edmonton, AB, T6G 2P5, Canada. <sup>33</sup>Molecular Genetics Research Unit, USDA–ARS, U.S. Meat Animal Research Center, Post Office Box 166, Clay Center, NE 68933, USA. <sup>34</sup>Dipartimento di Produzioni Animali, Università della Tuscia, via de Lellis, Viterbo 01100, Italy. <sup>35</sup>Department of Veterinary Pathobiology, College of Veterinary Medicine and Biomedical Sciences, Texas A&M University, College Station, TX 77843–4461, USA. <sup>36</sup>Genome Dynamics and Evolution, Wellcome Trust Sanger Institute, Hinxton, CB10 1SA, UK. <sup>37</sup>Animal Genetics and Genomics, Department of Primary Industries, 475 Mickelham Road Attwood, VIC 3031, Australia. <sup>38</sup>Faculty of Land and Food Resources, University of Melbourne, Royal Parade, Parkville, VIC 3010, Australia. <sup>39</sup>Smurfit Institute of Genetics, Trinity College, Dublin 2, Ireland. <sup>40</sup>Department of Molecular Biology and Biochemistry, Simon Fraser University, 8888 University Drive, Burnaby, BC, V5A 1S6, Canada.

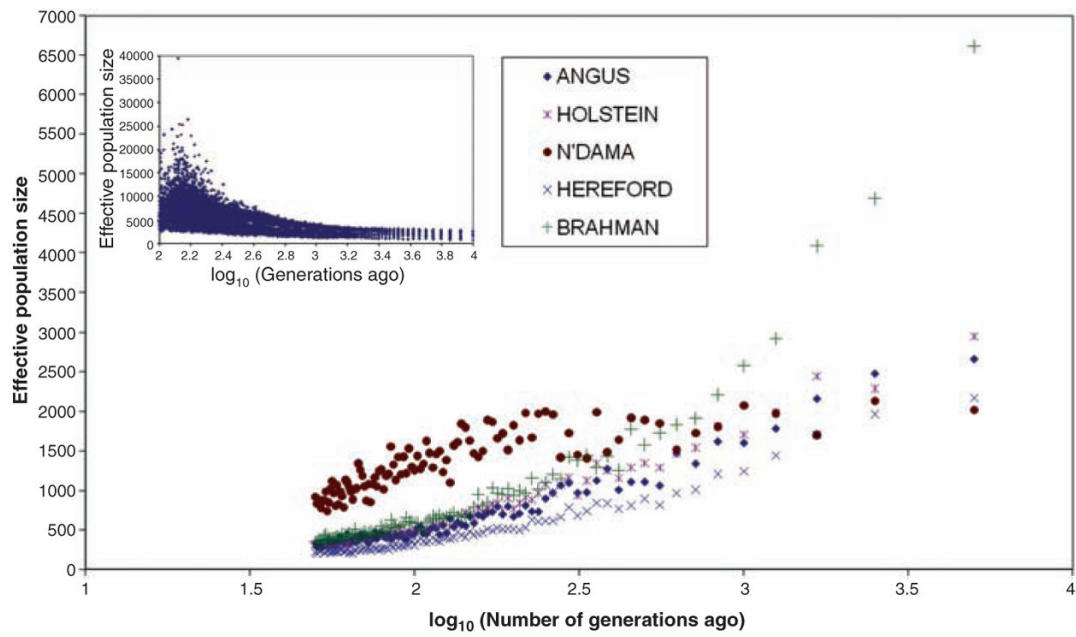
\*To whom correspondence and requests for materials should be addressed. E-mail: curt.vantassell@ars.usda.gov (C.P.V.T.), taylorjerr@missouri.edu (J.F.T.), and agibbs@bcm.tmc.edu (R.A.G.)

† In memoriam.

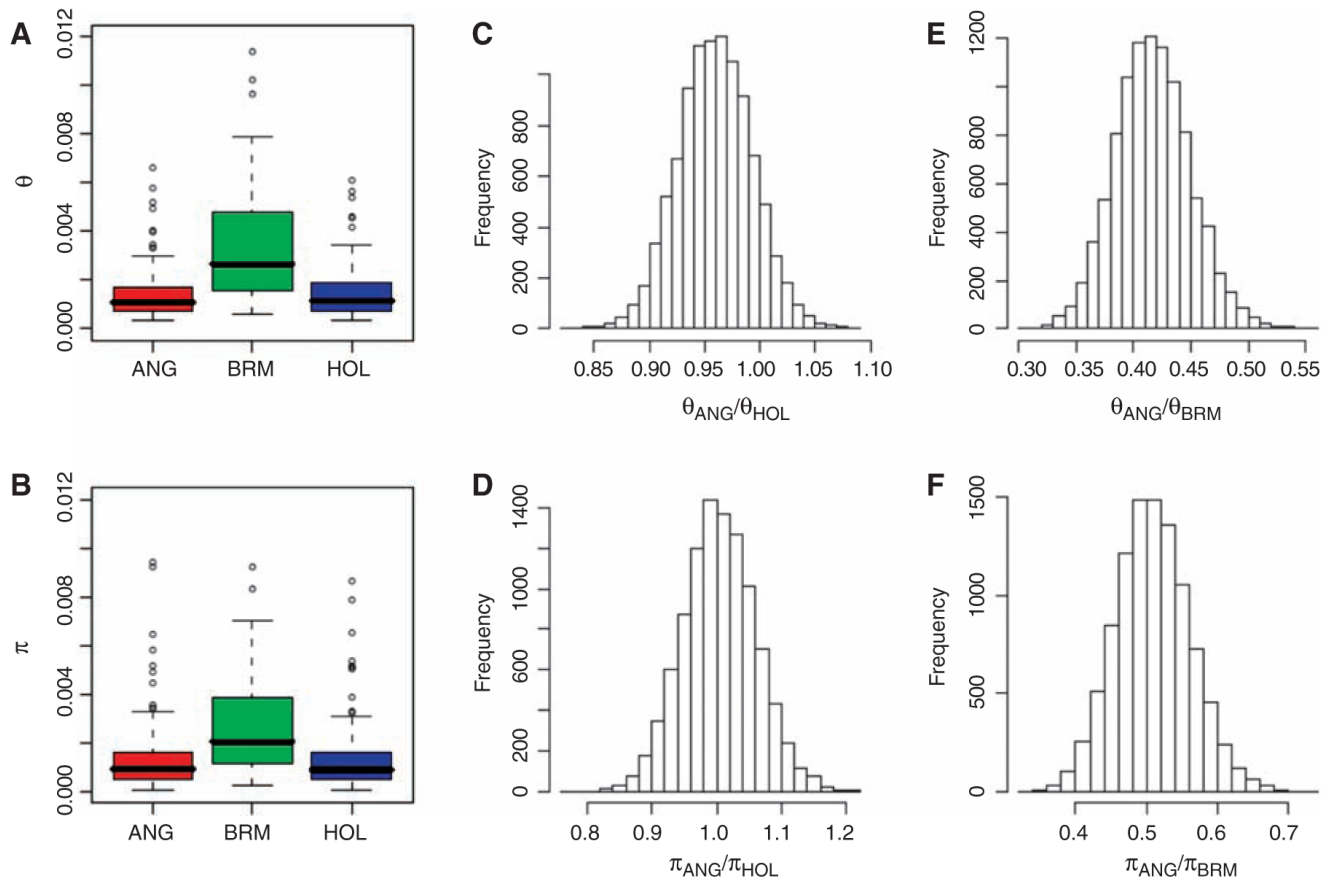




**Fig. 1.** (A) Population structure assessed by InStruct. Bar plot, generated by DISTRUCT, depicts classifications with the highest probability under the model that assumes independent allele frequencies and inbreeding coefficients among assumed clusters. Each individual is represented by a vertical bar, often partitioned into colored segments with the length of each segment representing the proportion of the individual's genome from  $K = 2, 3,$  or  $9$  ancestral populations. Breeds are separated by black lines. NDA, N'Dama; SHK, Sheko; NEL, Nelore; BRM, Brahman; GIR, Gir; SGT, Santa Gertrudis; BMA, Beefmaster; ANG, Angus; RGU, Red Angus; HFD, Hereford; NRC, Norwegian Red; HOL, Holstein; LMS, Limousin; CHL, Charolais; BSW, Brown Swiss; JER, Jersey; GNS, Guernsey; PMT, Piedmontese; RMG, Romagnola. (B) Principal components PC1 and PC2 from all SNPs. Taurine breeds remain separated from indicine breeds, and admixed breeds are intermediate.



**Fig. 2.** Effective population size in the past estimated from linkage disequilibrium data. Inset graph shows effective population size for the European humans over the same period; from (13). Breeds as in Fig. 1.



**Fig. 3.** Nucleotide diversity across five ENCODE regions resequenced in 47 animals from ANG, Angus; BRM, Brahman; and HOL, Holstein. **(A)** Watterson's estimate ( $\theta$ ) of the population mutation rate per base pair (pooled across regions). **(B)** Average pairwise nucleotide distance ( $\pi$ ) within breeds. **(C and E)** Non-parametric bootstrap estimates of diversity ratios among the three populations on the basis of  $\theta$ . **(D and F)** Nonparametric bootstrap estimates of diversity ratios among the three populations on the basis of  $\pi$ .

Genomic regions associated with extreme  $F_{ST}$  values with gene content consistent with domestication.  $F_{ST}$  values averaged over eight adjacent SNPs. Gene functions from OMIM and NCBI Gene database, except for *R3HDM1* described in (2).

Table 1

Genes	Index SNP	$F_{ST}$	BTA	Location	Effect or important phenotypes
High values					
<i>ZRANB3, R3HDM1</i>	rs29021800	0.31	2	64740286...64931017	Feed efficiency
<i>WIFI</i>	BTA-27454	0.29	5	52696749...53098507	Mammalian mesoderm segmentation
<i>SPOCK1</i>	BTA-142690	0.30	7	47301122...47899778	Proteoglycan—synaptic fields of the developing CNS
<i>NBEA</i>	BTA-153392	0.34	12	25884192...26189285	Human idiopathic autism
<i>NMT1, DCAKD, C1QL1</i>	BTA-45533	0.31	19	46088946...46157261	Activator of serum complement system
<i>DACH2, CHM, POU3F4, BRWD3</i>	BTA-161991	0.39	X	41471338...44478564	Human mental retardation
<i>NLGN3 to DGAT2L6</i>	BTA-164256	0.36	X	49279035...50192452	Severe combined immunodeficiency
Low values					
<i>PPARGC1A, DHX15, SOD3</i>	BTC-039516	0.04	6	45354707...45415844	Antioxidative extracellular protection
No known gene	BTC-049723	0.05	14	4569804...5204473	
<i>DNAH9</i>	rs29018632	0.05	19	30943404...31220868	Multisubunit molecular motor
<i>POU5F1, MHC</i>	BTA-55856	0.05	23	27895932...28145846	Major histocompatibility complex
<i>ZNF187</i>	rs29024230	0.04	23	30241236...30502690	Expressed in olfactory tissues
<i>AUTS2</i>	BTC-074065	0.04	25	31773107...32498861	Human autism susceptibility candidate
<i>RYR2</i>	rs29011563	0.05	28	8736599...8772178	Stress- and exercise-induced sudden cardiac death