



DIGITAL ACCESS TO SCHOLARSHIP AT HARVARD

Emerging hemodynamic signatures of the right heart (Third International Right Heart Failure Summit, part 2)

The Harvard community has made this article openly available.
[Please share](#) how this access benefits you. Your story matters.

Citation	Maron, Bradley A. 2014. "Emerging hemodynamic signatures of the right heart (Third International Right Heart Failure Summit, part 2)." <i>Pulmonary Circulation</i> 4 (4): 705-716. doi:10.1086/678544. http://dx.doi.org/10.1086/678544 .
Published Version	doi:10.1086/678544
Accessed	February 17, 2015 12:33:27 PM EST
Citable Link	http://nrs.harvard.edu/urn-3:HUL.InstRepos:13890787
Terms of Use	This article was downloaded from Harvard University's DASH repository, and is made available under the terms and conditions applicable to Other Posted Material, as set forth at http://nrs.harvard.edu/urn-3:HUL.InstRepos:dash.current.terms-of-use#LAA

(Article begins on next page)

Emerging hemodynamic signatures of the right heart (Third International Right Heart Failure Summit, part 2)

Bradley A. Maron

Division of Cardiovascular Medicine, Department of Medicine, Brigham and Women's Hospital and Harvard Medical School, Boston, Massachusetts, USA; and Department of Cardiology, Veterans Affairs Boston Healthcare System, Boston, Massachusetts, USA

Abstract: Despite the importance of preserved right ventricular structure and function with respect to outcome across the spectrum of lung, cardiac, and pulmonary vascular diseases, only recently have organized efforts developed to consider the pulmonary vascular–right ventricular apparatus as a specific unit within the larger context of cardiopulmonary pathophysiology. The Third International Right Heart Failure Summit (Boston, MA) was a multidisciplinary event dedicated to promoting a dialogue about the scientific and clinical basis of right heart disease. The current review provides a synopsis of key discussions presented during the section of the summit titled “Emerging Hemodynamic Signatures of the Right Heart.” Specifically, topics emphasized in this element of the symposium included (1) the effects of pulmonary vascular dysfunction at rest or provoked by exercise on the right ventricular pressure-volume relationship, (2) the role of pressure-volume loop analysis as a method to characterize right ventricular inefficiency and predict right heart failure, and (3) the importance of a systems biology approach to identifying novel factors that contribute to pathophenotypes associated with pulmonary arterial hypertension and/or right ventricular dysfunction. Collectively, these concepts frame a forward-thinking paradigm shift in the approach to right heart disease by emphasizing factors that regulate the transition from adaptive to maladaptive right ventricular–pulmonary vascular (patho)physiology.

Keywords: right heart failure, nomenclature.

Pulm Circ 2014;4(4):705-716. DOI: 10.1086/678544.

In the autumn of 2013, the Third International Right Heart Failure Summit convened in Boston, Massachusetts, to discuss contemporary concepts in the pathobiology and clinical management of right-sided cardiovascular disease. This symposium, which brought together international experts across a range of scientific and clinical fields, aimed to accomplish the following objectives: define a standardized vocabulary by which to discuss right heart disease,¹ present contemporary observations relevant to right ventricular (RV)–pulmonary vascular axis pathophysiology, and promote a dialogue about approaches to the care of patients with right heart failure syndromes. To accomplish these objectives, the summit was divided into three sections, titled (1) “Pulmonary Hypertension and the Right Ventricle—Thinking outside the Box,” (2) “Emerging Hemodynamic Signatures of the Right Heart,” and (3) “Transplantation in End-Stage Pulmonary Hypertension.” The salient scientific

and clinical points of each section will be the feature of a review article series in *Pulmonary Circulation*, with section 2 being the focus of the current work.

EMERGING HEMODYNAMIC SIGNATURES OF THE RIGHT HEART

The normal RV pressure-volume relationship

This section of the symposium addressed the RV–pulmonary vascular relationship as a prism by which to study and predict maladaptive and clinically meaningful changes to right heart function.^{2,3} This discussion was initiated by Dr. Andrew Redington, who reviewed the significance of RV pressure-volume assessment as a tool to monitor the consequences of pulmonary vascular dysfunction with respect to RV performance.

The geometric and functional parameters of the normal left ventricle (LV) have been characterized thoroughly, and the effect of perturbations to LV systolic and diastolic

Address correspondence to Dr. Bradley A. Maron, Brigham and Women's Hospital, 77 Avenue Louis Pasteur, NRB Room 0630-OA, Boston, MA 02115, USA. E-mail: bmaron@partners.org.

Submitted March 10, 2014; Accepted April 10, 2014; Electronically published November 7, 2014.

© 2014 by the Pulmonary Vascular Research Institute. All rights reserved. 2045-8932/2014/0404-0016. \$15.00.

efficiency on changes to functional capacity and longevity in patients has been described across virtually all forms of left-sided cardiovascular disease, including ischemic⁴ and genetic⁵ cardiomyopathies as well as pericardial disease.⁶ By contrast, substantially fewer data on the RV pressure-volume relationship under (patho)physiological conditions are available.⁷ This is due, in part, to the conformation of the RV chamber, which does not align with a simple geometric shape; thus, classical work using traditional non-invasive imaging (e.g., two-dimensional echocardiography, roentgenography) to calculate changes in RV cavity volume across the cardiac cycle were largely confounded.⁸ Even in the cardiac magnetic resonance (CMR) imaging era, monitoring with precision changes in RV volume or ejection fraction under different loading conditions characterizes global RV function in general, but most CMR indexes used in clinical practice are static measures that do not offer insight into the mechanistic underpinnings of RV contractile efficiency and/or the factors modulating a transition from adaptive to maladaptive RV remodeling.

Increased afterload mediates changes to the RV pressure-volume relationship

Seminal work in this field by Dr. Redington and colleagues characterized several key features unique to the normal RV pressure-volume relationship in humans (Fig. 1).¹⁰ First, the pressure-volume loop is triangular in conformation. Second, blood ejection occurs early in the RV pressure upstroke, with ~4% of stroke volume being ejected prior to peak RV systolic pressure. Third, a majority of stroke volume is ejected after peak RV systolic pressure; thus, the isovolumic relaxation phase is substantially less well defined in the RV than the LV. These investigators would later characterize the effects of changes to loading conditions on the RV pressure-volume relationship in humans. Whereas increased volume loading does not change the loop shape or ejection pattern significantly, increased RV afterload (e.g., subpulmonic valvular stenosis, increased pulmonary vascular resistance [PVR]) results in a blunted rate of ejection during RV pressure decline and a distinct isovolumic relaxation phase.^{9,11}

These observations describe the fundamental characteristics that distinguish the RV pressure-volume relationship from the LV pressure-volume relationship under conditions of altered volume and pressure loading and establish a model by which to study RV efficiency with respect to pulmonary vascular function (i.e., RV-pulmonary arterial coupling).^{3,12} In fact, subsequent empiric efforts have established that predicting pathological changes to the RV

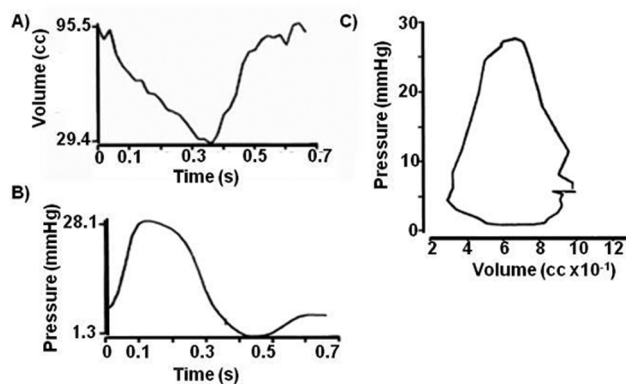


Figure 1. Normal human right ventricular (RV) pressure-volume loop. In seminal work by Redington and colleagues to characterize the normal RV pressure-volume loop, Simpson's rule was used to calculate the RV chamber volume from biplane ventriculograms that were derived from radiopaque casts of the human RV (A). Simultaneous pressure measurements were recorded using a micromanometer catheter placed in the apex of the RV (B), and the complete pressure-volume loop contour was created by superimposing volume and pressure measurements (C). Reproduced with permission from Redington et al.⁹

pressure-volume loop contour hinges on the severity and time course of increases in RV afterload. In one study of experimental pulmonary embolism¹³ in which swine were subjected to autologous pulmonary artery blot clot, RV conductance catheterization was performed to assess changes in pulmonary arterial elastance (E_a ; i.e., RV afterload), RV end-systolic elastance (E_{ES} ; i.e., load-independent contractility), and the $E_{ES} : E_a$ ratio, which is an assessment of RV-pulmonary arterial coupling (Fig. 2). In that study, a significant increase in E_a and E_{ES} was observed beginning 30 minutes after embolization, with a maximum peak within 4 hours. These changes resulted in an initial decrease in the $E_{ES} : E_a$ ratio and an attendant optimization of RV stroke volume. However, as predicted by Redington and colleagues,^{9,11} late responses to gradually increased RV afterload ultimately resulted in decreased RV stroke volume and maladaptive RV cavity dilation.

These trends have been reproduced in studies of chronic right heart failure. In animals subjected to pulmonary arterial banding or treatment with monocrotaline to induce acute and chronic pulmonary hypertension, respectively, increased E_{ES} and preload recruitable RV stroke work were observed.¹⁵ However, changes in these pressure-volume indexes are more pronounced in acute rather than chronic pulmonary hypertension and appear to be contingent largely on RV diastolic function rather than RV free-wall thickness. Along these lines, the importance of RV dia-

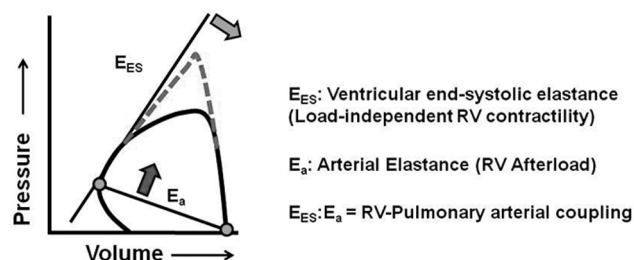


Figure 2. The pressure-volume diagram is used to calculate right ventricular (RV)–pulmonary vascular coupling. The pressure-volume diagram allows for the determination of RV end-systolic elastance (E_{ES}). E_{ES} is unaffected by changes to RV afterload (dashed line) and, therefore, is the best possible load-independent measurement of contractility. By contrast, arterial elastance (E_a) is proportional to pulmonary vascular resistance and is a measurement of RV afterload. The ratio of E_{ES} to E_a is a measure of the coupling of the respective ventricular and arterial loads. Thus, a decrease in E_{ES} (light gray arrow) or an increase in E_a (dark gray arrow) due to elevations in pulmonary vascular resistance, for example, disrupts normal coupling. Adapted with permission from Brimiouille et al.¹⁴

stolic function to the pathophysiology of PAH in patients has been reported recently. For example, Rain et al.¹⁶ performed single-beat RV pressure-volume analyses in 7 controls and 21 patients with PAH due largely to connective tissue and congenital heart disease. Their findings suggest that RV diastolic stiffness was increased significantly in PAH, possibly through a mechanism involving the protein titin in RV cardiomyocytes, which regulates sarcomeric stiffness.

Left heart disease and the RV pressure-volume relationship

The effect of increased left heart afterload on RV performance has generated provocative insight into the mechanism(s) that determine RV cardiac output. In one study of experimental chronic RV pressure overload in rabbits, aortic constriction decreased RV cavity dimension and improved RV contractile performance.¹⁷ Compared with the RV failure condition alone, aortic banding also attenuated histopathological evidence of adverse RV cardiomyocyte remodeling and decreased RV messenger RNA (mRNA) expression levels of matrix metalloproteinase 9 and transforming growth factor β , which are key signaling intermediaries involved in extracellular matrix metabolism and collagen deposition, respectively.¹⁸ Overall, findings from this and other similar studies¹⁹ illustrates the importance of interventricular dependence on RV geometry and performance and suggests that increased LV afterload pro-

motes recruitment of the interventricular septum by the RV to maintain (or augment) RV stroke volume. The implications of these collective observations to patients continue to be explored, although technical factors associated with accurately measuring the RV pressure-volume relationship are an important consideration to the use of these methods in routine clinical practice.²⁰

HEMODYNAMIC PITFALLS AND PEARLS

In this segment of the symposium, Drs. Michael Landberg and Alexander Opatowsky used a case-based approach to discuss strategies to synthesize a differential diagnosis and therapeutic approach to patients with various forms of right heart disease, particularly congenital heart²¹ and exercise-induced pulmonary vascular²² diseases. The speakers noted that a dilemma common to the management of this patient population is clinical decision making in asymptomatic or minimally symptomatic patients despite clinical evidence of active right heart disease. Additionally, despite the acuity and severity of many pulmonary vascular diseases, such as pulmonary arterial hypertension (PAH), clinicians must remain alert to alternative causes to patients' clinical presentations, such as competing cardiopulmonary diseases or other processes. To illustrate this latter point, a clinical vignette was presented in which strategies to characterize the contribution of aortic valve disease to exercise intolerance in a patient with bona fide PAH were reviewed.

Aortic valve disease in patients with pulmonary hypertension: cause or consequence?

The positive association between aortic valvular stenosis (AS) and pulmonary vascular dysfunction was originally reported more than 7 decades ago.²³ In one early study, the cardiopulmonary hemodynamic profile was evaluated in a cohort of 74 veterans with surgical AS, which demonstrated that at least moderate pulmonary hypertension was present in 54% of patients and that aortic valve area correlated inversely with pulmonary arterial pressure (PAP).²⁴ These findings are in agreement with subsequent observations reported in larger patient cohorts, including one study of 388 symptomatic AS patients undergoing right heart catheterization in which 63% had evidence of at least moderate pulmonary hypertension.²⁵

The prognostic relevance of pulmonary hypertension with respect to outcome in patients with AS is identified as an important factor determining eligibility for mechanical aortic valve replacement. In one recent prospective

trial involving 1,116 patients with surgical AS, severe pulmonary hypertension was associated with increased age, more severe multivessel coronary disease, lower LV ejection fraction, and increased probability of recent myocardial infarction.²⁶ Furthermore, pulmonary hypertension of any degree was an independent predictor of mortality in the immediate postoperative period and over 5 years of follow-up. Indeed, pulmonary vascular disease severity has been raised as a potential clinical metric by which to predict clinical response to aortic valve treatment. Severe pulmonary hypertension (defined by the investigators as pulmonary arterial systolic pressure [PASP] of >60 mmHg) predicted increased mortality at 8 months after transcatheter aortic valve implantation (TAVI; hazard ratio [HR], 1.88 [95% confidence interval, 1.17–30]) in a prospective analysis of 345 aortic valve procedures, which was akin to other traditional high-risk clinical conditions, such as peri-procedural sepsis.²⁷

Ben-Dor et al.²⁸ studied 509 patients with severe AS evaluated for TAVI or balloon aortic valvuloplasty and observed that higher preprocedural PAP was associated with increased cardiovascular symptom burden, more severe renal insufficiency, and higher left ventricular end-diastolic pressure. In that study, pulmonary hypertension severity was abrogated immediately following TAVI (or surgical AV replacement), and this change was generally sustained 1 year after the procedure, although data from our institution (unpublished) and others²⁹ suggest a less consistent therapeutic benefit to the pulmonary vasculature following TAVI for aortic valve replacement.

Less well defined is the role of pulmonary vasoreactivity as a treatment target to improve outcome in patients with aortic valve disease. Among 20 patients with severe AS and pulmonary hypertension (mean PASP, 55 mmHg; PVR, 3.5 Wood units), the oral phosphodiesterase type 5 inhibitor sildenafil (40 or 80 mg) was well tolerated when administered as single dose and induced an immediate improvement in PASP, PVR, and LV stroke volume index by –25% ($P < 0.001$), –29% ($P < 0.001$), and +8% ($P = 0.05$), respectively.³⁰ Despite these encouraging data, larger studies are required to characterize further the potential benefits of pulmonary vasodilator therapy in patients treated medically for aortic stenosis or undergoing valve replacement. It is also worthwhile to note that patient fragility and low distance achieved in the 6-minute walk test³¹ are established factors that predict outcome in patients undergoing TAVI or surgical aortic valve replacement, although the contribution of pulmonary vascular disease at rest or provoked by exertion to this effect is not known.

EXERCISE-INDUCED PULMONARY HYPERTENSION: WHEN DOES PHYSIOLOGY TRANSITION TO PATHOLOGY?

The factors that promote abnormal RV and pulmonary vascular response patterns to exercise are incompletely characterized, despite the critical importance of physical activity to the development of right heart failure symptoms provoked by exertion. In fact, although numerous reports have established metrics that define abnormal functional capacity and cardiovascular fitness occurring in concert with irregular exertional cardiopulmonary hemodynamics, a standardized hemodynamic definition for exercise-induced pulmonary hypertension remains lacking.³² Traditional models have largely emphasized pulmonary vascular dysfunction due to abnormal blood vessel compliance, reactivity, and stiffness as critical determinants of developing exercise-induced PAH (EI-PAH).³³ However, changes to RV cavitory dimension and systolic function due to RV–pulmonary vascular uncoupling is increasingly recognized as a mediator of the EI-PAH pathophenotype³⁴ and was explored further in this section of the summit.

The pivotal role of RV function in determining cardiopulmonary responses to exercise

Observations from elite athletes identifies two forms of RV remodeling based on endurance (e.g., swimming, long-distance running) versus isometric (e.g., weight lifting) activities, which results in eccentric biventricular remodeling (including RV dilation) and concentric LV remodeling in the absence of significant changes to RV structure/function, respectively (Fig. 3).³⁵ The mechanism(s) underpinning these differences are unresolved; however, it has been hypothesized that the mitral and aortic valves function as resistors to protect the pulmonary vascular–RV circuit from afterload bursts generated by isometric activities. By contrast, RV involvement in the (patho)phenotype of endurance athletes is ascribed, in part, to the effects of subchronic elevations in cardiac output associated with repetitive aerobic activity on pulmonary vascular function that increases RV cavitory dimension and PAP.³⁶

Recent reports suggest further that RV cardiomyocyte recovery kinetics may modulate, in part, the right heart response to exercise.^{37,38} La Gerche et al.³⁷ used CMR imaging to characterize the effects of ultraendurance athletic activity on RV performance. Their observations suggest that, compared with the preparticipation state, RV function is significantly impaired in the time period immediately following extremely long endurance events, such as

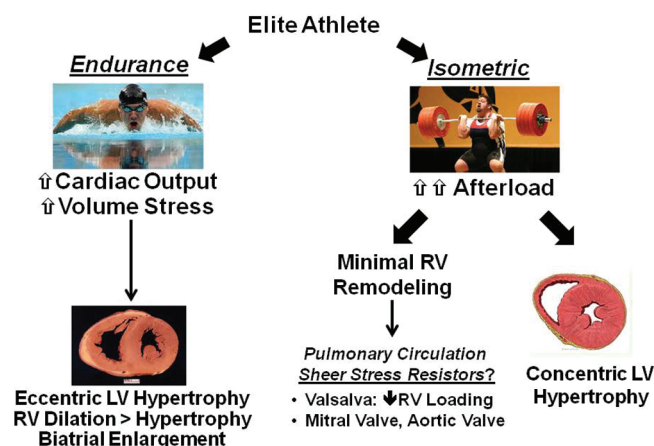


Figure 3. Differential effect on right heart adaptation of endurance or isometric exercise. Exercise-induced remodeling patterns tend to be associated with athletic activity type, which is due to activity-specific changes in cardiopulmonary physiology. For example, isometric exercises (e.g., competitive weight lifting), characterized by sudden bursts of increased afterload, increase left ventricular (LV) pressure-loading conditions and promote LV hypertrophy. By contrast, the right ventricle (RV) is generally spared from remodeling in isometric exercise, an effect hypothesized to occur as a consequence of left heart valve-mediated protection of the pulmonary circulation and RV from increased systemic pressure. In endurance exercise, sustained increases in cardiac output alters volume-loading conditions to both the LV and the RV, resulting in RV dilation and, to a lesser degree, hypertrophy that occurs in addition to left heart remodeling.

marathon running (3 hours in duration) and ultratriathlons (11 hours in duration). Interestingly, they also identified a correlation between event duration and severity of RV functional impairment but noted that RV recovery was observed in most athletes by 12 days after the competition (Fig. 4). Presumably, these reversible changes to RV structure and function in elite athletes describe adaptive or only minimally maladaptive changes to cardiovascular function provoked by physical activity. Taken together, these observations illustrate the importance of characterizing further factors that promote divergence from normal RV exercise-response patterns.

Defining determinants of RV work: hydraulic power and RV–pulmonary vascular coupling

Even subtle perturbations to RV loading conditions are associated with unfavorable changes to right heart function.³⁹ Yet increased RV afterload is tolerated to varying degrees across the spectrum of cardiopulmonary disease,^{40,41} while assessing RV systolic function, such as ejection fraction, is not synonymous with measuring RV

efficiency. To accomplish this, it may be useful to quantify the mechanical pump properties of the RV chamber in the context of pulmonary circulatory function.⁴²

One method to accomplish this is by defining RV hydraulic power as the energy per unit of time required to produce a steady flow of blood through the pulmonary circuit. This is quantitated by the product of cardiac output and mean PAP (mPAP).^{43,44} Within this construct, flow through the pulmonary vascular circuit will require a mean and oscillatory fraction of hydraulic power, which, in turn, exerts differing functionalities to the RV–pulmonary vascular relationship. On the one hand, the mean oscillatory fraction describes the contribution of RV hydraulic power to the biologically relevant component(s) of the system: blood flow and, thus, oxygen transport. On the other hand, the oscillatory fraction of hydraulic power describes the contribution of RV hydraulic power to the mechanical arm of the system, which is pulmonary arterial pulsatility and blood pressure. Under experimental conditions, the RV oscillatory fraction is ~23%, which is substantially higher than that reported for the LV (10%).⁴³

It reasons that factors that alter normal RV loading conditions—such as the pulmonary vascular fibrosis, inflammation, and blood vessel thickening that occur in PAH, for example—will potentiate a shift in the RV hydraulic power dynamic in favor of an increased oscillatory fraction.⁴⁵ To illustrate this further, consider Figure 5, which illustrates pulmonary vascular distensibility as a nonlinear relationship between cardiac output and mPAP. Under experimental conditions, cardiac output associates positively with pulmonary vascular distensibility up to ~30 L/min. In healthy individuals, the distensibility coefficient is ~2%, which protects the RV somewhat against an increase in afterload during activity.⁴⁶ The extent to which intrinsic disease of the pulmonary vasculature alters the slope of this curve, however, has not yet been fully characterized. Nevertheless, it is clear that, at least in the diseased state, pulmonary arterial compliance correlates inversely with RV function, as suggested by numerous clinical reports in patients with various forms of pulmonary hypertension.^{47,48} From these collective observations, the interrelatedness of pulmonary circulatory and RV function comes into focus.

Assessing RV efficiency through the pressure-volume loop model

The extent to which a disruption in the balance between the mean and oscillatory fractions of hydraulic work influences normal RV performance may be expressed vis-à-vis

Post-Exercise RV Performance

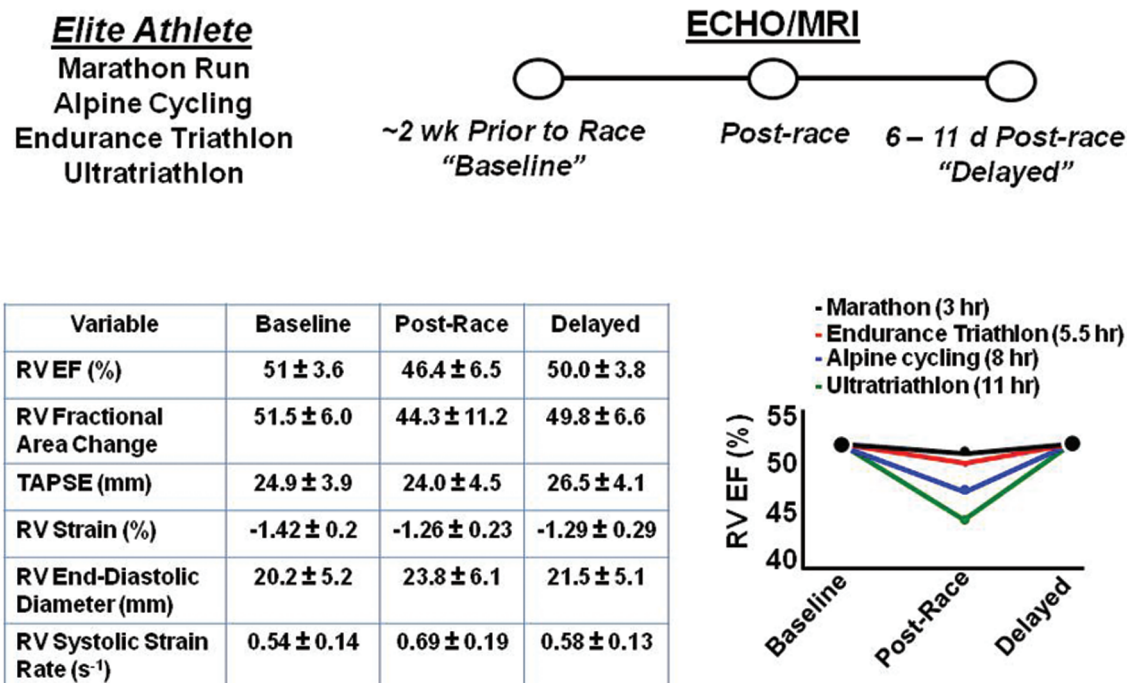


Figure 4. Changes to right ventricular geometry and performance as a function of time following extreme athletic participation. La Gerche et al.³⁷ recently reported changes to right ventricular (RV) structure and function in a group of marathon runners, alpine cyclers, endurance triathletes, and ultratriathletes, assessed by echocardiography (ECHO) or cardiac magnetic resonance imaging (MRI) within 2 weeks of competition (baseline), immediately after the completion of competition (postrace), and within 6–11 days after the competition (delayed). Overall, these data raise speculation that differences in RV cardiomyocyte recovery kinetics may influence the right heart response patterns to exercise. EF: ejection fraction; TAPSE: tricuspid annular plane systolic excursion. Adapted with permission from La Gerche et al.³⁷

changes to the pressure-volume relationship (Fig. 2). As discussed by Dr. Redington (see the section “The normal RV pressure-volume relationship” above), the RV end-systolic elastance (E_{ES}) is a load-independent measure of myocardial contractility and is defined as the maximal pressure generated by the RV at a particular volume. Arterial elastance (E_a), which is calculated by the ratio of RV end-systolic pressure to stroke volume, is proportional to PVR and, thus, operates as a measurement of RV afterload.⁴⁹ Taken together, the ratio of E_{ES} to E_a is a measure of the coupling of ventricular contractility and pulmonary arterial load. Thus, a decrease in E_{ES} (i.e., contractility) or an increase in E_a (i.e., due to elevated PVR) disrupts normal coupling.

To investigate the physiological relevance of these relationships, Brimiouille et al.¹⁴ performed a series of clever experiments in dogs to assess the RV end-systolic pressure-volume relationship in response to various stimuli designed to mimic exercise. In that study, pharmacological activation of β -adrenergic signaling with dobutamine increased the

$E_{ES} : E_a$ ratio, primarily through effects on RV contractility rather than PVR. Thus, under conditions of enhanced RV contractility, improvements to cardiac output may occur at the expense of RV hydraulic efficiency, although proving this in the exercising human requires further investigation.

While interrogating the consequences of exercise with respect to RV–pulmonary vascular coupling by pressure-volume analysis remains a difficult task practically, Tolle et al.⁵⁰ demonstrated that among a cohort of patients undergoing invasive exercise hemodynamic monitoring, three subphenotypes merged: normal, in whom the cardiopulmonary hemodynamics were normal at rest and a >50% decrease in PVR was observed at peak exercise; patients meeting hemodynamic criteria for PAH at rest, in whom PVR declined slightly or was increased with exercise; and EI-PAH patients, in whom hemodynamics were normal at rest but functional capacity was diminished and PVR decline at rest was below anticipated levels. These dynamic cardiopulmonary hemodynamic changes were not contingent on changes in LV end-diastolic pres-

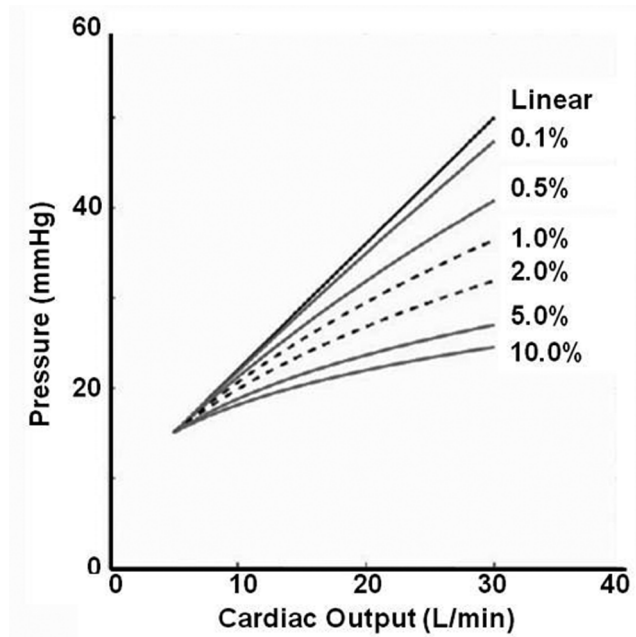


Figure 5. Pulmonary vascular distensibility curve. Modeled mean pulmonary arterial pressure-flow relationships at progressively increased pulmonary vascular distensibility is expressed as percent increase in diameter per millimeter of mercury of pressure. Reproduced with permission from Naeije et al.⁴⁶

sure, indicating intrinsic disease of the pulmonary vasculature. In that study, the downstream consequences of increased PVR on RV–pulmonary arterial coupling was examined indirectly by measuring the relationship between mPAP and maximal volume of oxygen consumption ($\dot{V}O_2$). In the “takeoff pattern,” which is generally associated with normal or near-normal exercise function, a limitation of $\dot{V}O_2$ by mPAP was observed, although this effect was late after exercise initiation and, thus, is believed to reflect maximal pulmonary vascular distensibility achieved by increased cardiac output during exercise (Fig. 6A). By contrast, an early increase in the mPAP- $\dot{V}O_2$ relationship was observed in patients with EI-PAH and resting PAH and is hypothesized to represent significant RV dysfunction due to RV-arterial uncoupling (Fig. 6B).

THE SYSTEMS PATHOBIOLOGY OF PAH: A NETWORK MEDICINE APPROACH

Dr. Joseph Loscalzo discussed an evolving paradigm shift in the methods by which human diseases, including pulmonary vascular disease, are studied, analyzed, and categorized. The traditional method for classifying human disease is an organ-based approach that segregates phenotypes largely along pathophysiological lines.⁵¹ This time-honored strategy is derived from the classical era of medicine, in which microscopy or physical diagnosis alone was

sufficient to diagnose diseases for the primary purpose of prognosis.⁵² However, in the genomic and molecular era of science, the possibility of developing target-specific therapies, such as monoclonal antibodies or small-molecule inhibitors, is increasingly realized; thus, methods to con-

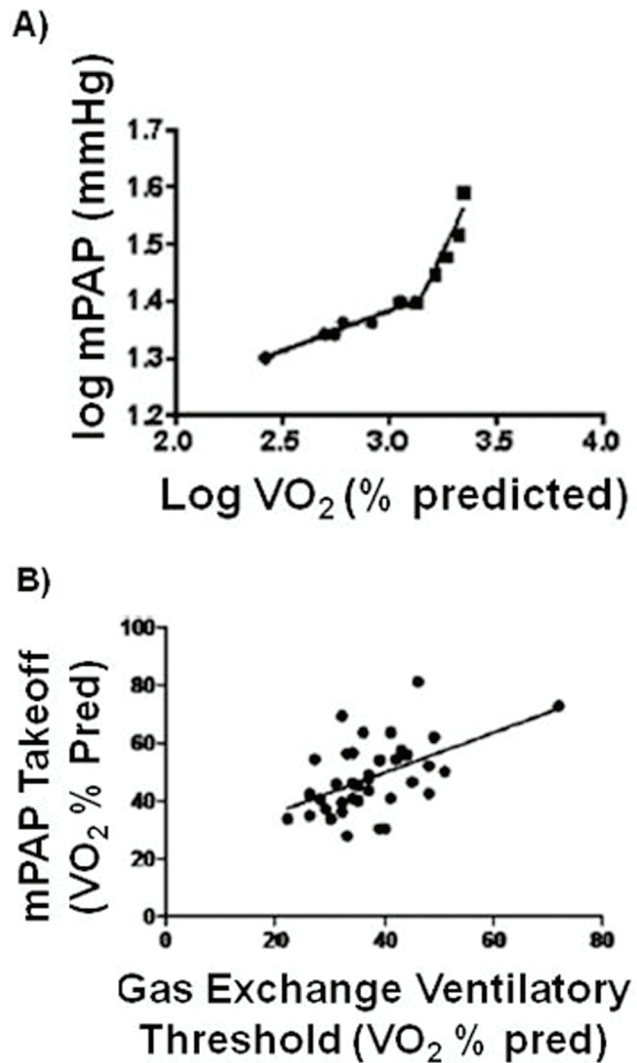


Figure 6. The relationship between mean pulmonary arterial pressure (mPAP) and peak volume of oxygen consumption ($\dot{V}O_2$) during exercise is influenced by different forms of pulmonary vascular disease. Two pathophysiological patterns underpinning the pulmonary vascular limit to exercise are identified by assessing the relationships between mPAP and peak $\dot{V}O_2$. A, In the “takeoff pattern,” which is generally associated with normal or near-normal exercise function, a limitation of $\dot{V}O_2$ by mPAP occurs, but it is a late effect after exercise initiation. This pattern is believed to reflect the effects of limited pulmonary vascular distensibility. B, By contrast, an early increase in the mPAP- $\dot{V}O_2$ relationship is observed in patients with exercise-induced pulmonary arterial hypertension (PAH) and PAH at rest, which may represent significant right ventricular (RV) dysfunction due to RV-arterial uncoupling. Adapted with permission from Tolle et al.⁵⁰

ceptualize diseases that consider a more precise pathophenotype classification are desirable. This has particular relevance to the field of pulmonary vascular disease, in which a swath of candidate molecules are implicated in the development of PAH, defined (somewhat vaguely) as a unifying end phenotype according to general cardiopulmonary hemodynamic criteria. In turn, delineating with greater precision the basic factors that define PAH clinical expression is anticipated to provide enhanced clarity over current methods for matching affected patients to disease-specific therapies.⁵³

There is substantial genetic overlap between selected, common human disease pathophenotypes,⁵⁴ which has been demonstrated using genome-wide association studies (GWASs)⁵⁵ and systems biology network methods.⁵⁶ The GWASs, which are performed using vast numbers of patients sharing a common disease, have identified genetic variability (i.e., single-nucleotide polymorphisms) in association with disease prevalence. The GWAS strategy, therefore, leverages large-scale epidemiological and genetic methods to provide, as Dr. Loscalzo stated, a “linear narrative of disease” through the identification of chromosomal loci implicated in incident disease occurrence. By contrast, a systems biology approach to defining disease pathophenotype is multidimensional: a network of molecular interactions (protein-protein, mRNA-mRNA, etc.) regulating the development of an intermediate pathophenotype is generated mathematically, on the basis of the curated literature or biological data sets, to identify novel targets involved in disease expression (reviewed recently by Silverman and Loscalzo⁵⁷).

The interactome and human disease

An overarching objective of network theory when applied to biology is to depict quantitatively the interactions between proteins (or other key cellular components), clinical phenotypes, and other variables relevant to understanding disease pathophenotypes. This is based on the principle that the functional effects of any single protein, for example, involve targets residing in both the intracellular and the extracellular compartment as well as at remote tissue/organ sites.⁵⁸ Thus, the effect of a specific genetic abnormality is likely to involve a range of other functionally relevant interactions, which forms the links between targets and, ultimately, the interactome. In fact, several published data sets support the assertion that biological networks are not random and generate a pattern of clustering nodes.^{58,59} The organization of node clusters may be grouped further into protein modules, which represent highly linked variables. Overall, this framework unveils connectivity between biologically relevant factors and/or clinical phenotypes.

In light of the observation that of 25,000 genes only ~1,700 are implicated in human disease,⁶⁰ the importance of functional connectivity between genes and gene

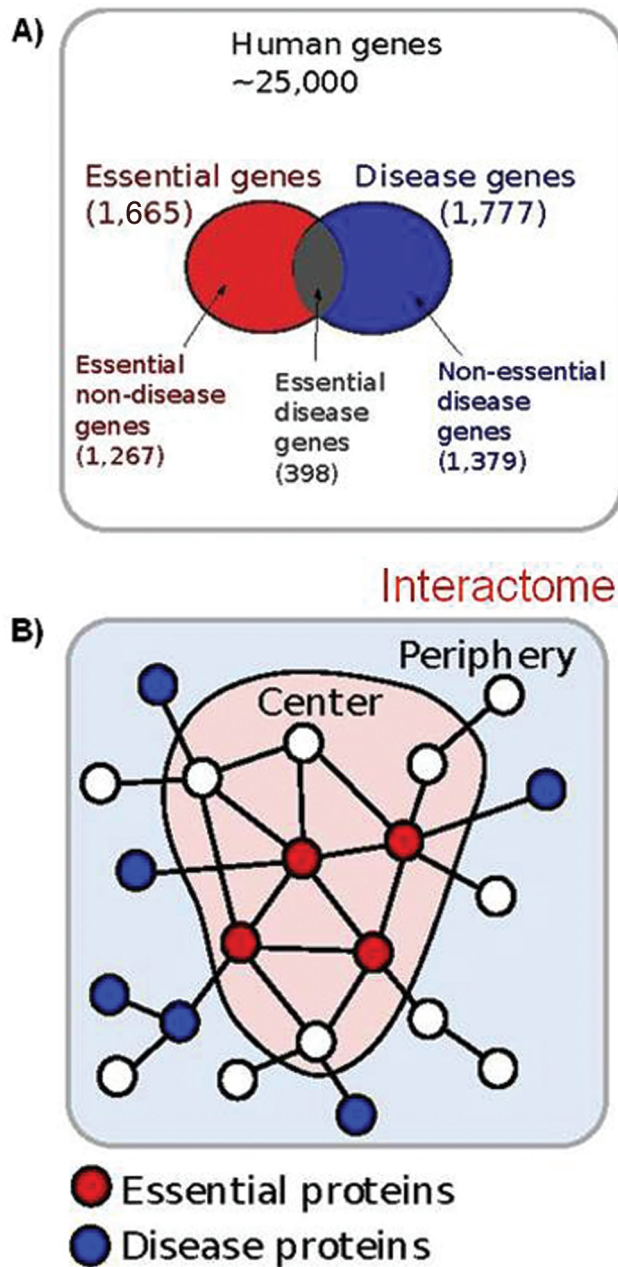


Figure 7. Distribution of genes in the human interactome. A, Depiction of the distribution of in utero essential versus known disease genes identified among the ~25,000 human genes. B, Schematic diagram of the differences between essential and nonessential disease genes. Nonessential disease genes (shown as blue nodes) are found to segregate at the network periphery, whereas in utero essential genes (shown as red nodes) tend to be at the functional center (encoding hubs and expressed in many tissues) of the interactome. A is reproduced with permission from Goh et al.⁶¹ B is reproduced with permission from Barabási et al.⁶²

products is more clearly realized. This may be depicted schematically by the centralization of fetally lethal genes and the distribution of nonessential genes to the periphery of the human interactome (Fig. 7). Building on this concept, disease modules are developed to express important biological factors according to interactivity, functionality, or relevance, as defined by association with a specific disease in the presence of an expression-altering effector (environmental factors, de novo mutation, etc.).^{62,63} Collectively, the network construct is a truly “ground-up” approach to classifying disease: key molecular interactions associating with disease pathophenotype are identified, which, in turn, link basic substrate abnormality to clinical pathophenotype.

Systems biology and PAH

PAH is a heterogeneous disease in many respects, including the involvement of numerous molecular mechanisms identified in the development of pulmonary arterial thickening, fibrosis, and dysregulated pulmonary endothelial

and smooth muscle cell apoptosis. In this regard, PAH is an excellent disease model for network biology analysis, which is, in part, the subject of an ongoing National Institutes of Health–sponsored consortium investigation (MAPGen; <http://www.mapgenprogram.org>). Parikh et al.⁶⁴ constructed a PAH network consisting of 131 nodes and 26 functional pathways that, when subjected to mathematical modeling, resulted in the development of a consolidated PAH interactome consisting of 115 nodes and 255 edges (i.e., interactions between nodes; Fig. 8). A subset of microRNAs (miRNAs), which are noncanonical and highly conserved noncoding ribonucleic acids,⁶⁵ were identified on the basis of their previously established role in mediating cellular responses to hypoxia, inflammation, and tissue growth factor β signaling. Of this group, miRNA-21 was studied further owing to its association with cellular phenotypes implicated in PAH and the regulatory influence observed by this particular miRNA on the network. Findings in cultured pulmonary arterial endothelial cells and in experimental PAH in vivo validated miRNA-21 in-

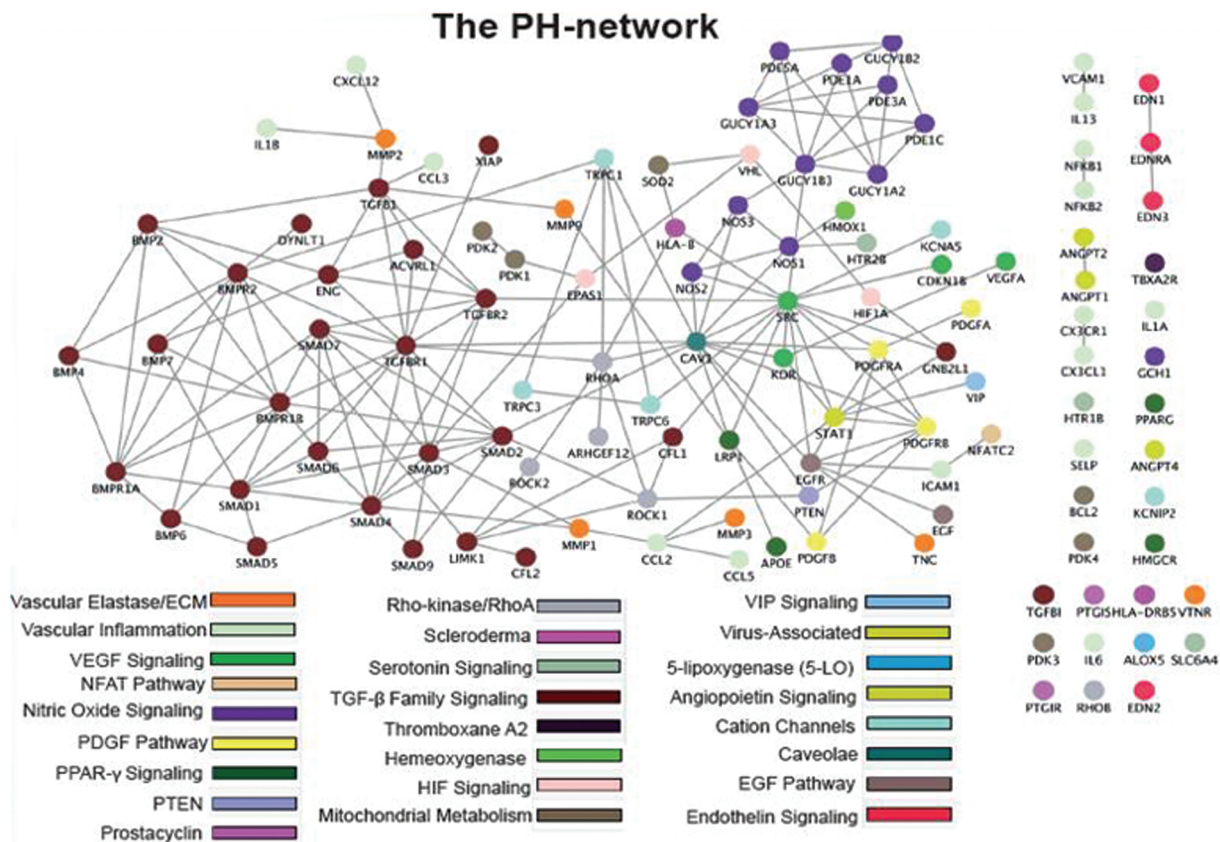


Figure 8. A proposed pulmonary hypertension (PH) network. The known first-degree interactions (indicated by gray lines) are displayed among the genes in the PH module. There exist a total of 115 nodes and 255 edges (interconnections). Reproduced with some modification with permission from Parikh et al.⁶⁴

involvement in the PAH pathophenotype via regulation of bone morphogenetic protein receptor type 2 and Rho kinase signaling pathways. Taken together, these findings demonstrate the potential for network biology to identify novel molecular links involved in the pathobiology of PAH.

CONCLUSIONS

A wide-ranging gamut of topics relevant to understanding RV–pulmonary vascular (patho)physiology in the current era was discussed in this section of the Third International Right Heart Failure Summit. Classical studies analyzing the RV pressure-volume relationship were reviewed and evaluated in the context of contemporary data, particularly regarding the effects of increased RV afterload and exercise on RV work efficiency. Novel reports characterizing changes to RV structure and function following competitive athletic participation has generated important insight into the potential contribution of RV myocyte recovery kinetics to determining adaptive versus maladaptive RV exercise response patterns in humans. Future work is likely to continue to leverage a systems biology approach to understanding further the molecular underpinnings that regulate RV and pulmonary vascular function and modulate the development of right heart pathophenotypes, particularly PAH and RV failure.

ACKNOWLEDGMENTS

I would like to acknowledge the expert technical assistance of Stephanie Tribuna in the preparation of the manuscript.

Source of Support: This work was supported in part by the Pulmonary Vascular Research Institute, the National Institutes of Health (1K08HL111207-01A1), a Center for Integration of Medicine and Innovative Technology award, the Pulmonary Hypertension Association, and the Lerner and Klarman Foundations at Brigham and Women's Hospital.

Conflict of Interest: BAM receives funding from Gilead Sciences to study pulmonary hypertension.

REFERENCES

- Merha MR, Park MH, Landzberg MJ, Lala A, Waxman AB; International Right Heart Failure Foundation Scientific Working Group. Right heart failure: toward a common language. *J Heart Lung Transplant* 2014;33(2):123–126.
- Roche SL, Redington AN. The failing right ventricle in congenital heart disease. *Can J Cardiol* 2013;29(7):768–778.
- Champion HC, Mikelakis ED, Hassoun PM. Comprehensive invasive and noninvasive approach to the right ventricle–pulmonary circulation unit: state of the art clinical and research implications. *Circulation* 2009;120(11):992–1007.
- Gaasch WH, Zile MR. Left ventricular structural remodeling in health and disease: with special emphasis on volume, mass, and geometry. *J Am Coll Cardiol* 2011;58(17):1733–1740.
- Maron BJ. Hypertrophic cardiomyopathy: a systematic review. *JAMA* 2002;287(10):1308–1320.
- Lilly LS. Treatment of acute and recurrent idiopathic pericarditis. *Circulation* 2013;127(16):1723–1726.
- Maron BA. Targeting neurohumoral signaling to treat pulmonary hypertension: the right ventricle coming into focus. *Circulation* 2012;126(24):2806–2808.
- van der Zwaan HB, Geleijnse ML, McGhie JS, et al. Right ventricular quantification in clinical practice: two-dimensional vs. three-dimensional echocardiography compared with cardiac resonance imaging. *Eur J Echocardiogr* 2011;12(9):656–664.
- Redington AN, Rigby ML, Shinebourne EA, Oldershaw PJ. Changes in the pressure-volume relation of the right ventricle when its loading conditions are modified. *Br Heart J* 1990;63(1):45–49.
- Redington AN. Physiopathology of right ventricular failure. *Semin Thorac Cardiovasc Surg Pediatr Card Surg Annu* 2006;9:3–10.
- Redington AN, Gray HH, Hodson ME, Rigby L, Oldershaw PJ. Characterisation of the normal right ventricular pressure-volume relation by biplane angiography and simultaneous micromanometer pressure measurements. *Br Heart J* 1988;59(1):23–30.
- Kuehne T, Yilmaz S, Steendijk P, et al. Magnetic resonance imaging analysis of right ventricular pressure-volume loops: in vivo validation and clinical application in patients with pulmonary hypertension. *Circulation* 2004;110(10):2010–2016.
- Borgdorff MA, Bartelds B, Dickinson MG, Steendijk P, de Vroomen M, Berger RM. Distinct loading conditions reveal various patterns of right ventricular adaptation. *Am J Physiol Heart Circ Physiol* 2013;305(3):H354–H364.
- Brimioulle S, Wauthy P, Ewalenko P, et al. Single-beat estimation of right ventricular end-systolic pressure-volume relationship. *Am J Physiol Heart Circ Physiol* 2003;284(5):H1625–H1630.
- Ghuysen A, Lambermont B, Kolh P, et al. Alteration of right ventricular–pulmonary vascular coupling in a porcine model of progressive pressure overloading. *Shock* 2008;29(2):197–204.
- Rain S, Handoko ML, Trip P, et al. Right ventricular diastolic impairment in patients with pulmonary arterial hypertension. *Circulation* 2013;128(18):2016–2025.
- Apitz C, Honjo O, Humpl T, et al. Biventricular structural and functional responses to aortic constriction in a rabbit model of chronic right ventricular pressure overload. *J Thorac Cardiovasc Surg* 2012;144(6):1494–1501.
- Ormiston ML, Chang C, Long LL, et al. Impaired natural killer cell phenotype and function in idiopathic and heritable pulmonary arterial hypertension. *Circulation* 2012;126(9):1099–1109.
- Bartelds B, Borgdorff MA, Smit-van Oosten A, et al. Differential responses of the right ventricle to abnormal loading conditions in mice: pressure vs. volume load. *Eur J Heart Fail* 2011;13(12):1275–1282.
- Lewis GD, Bossone E, Naeije R, et al. Pulmonary vascular hemodynamic response to exercise in cardiopulmonary disease. *Circulation* 2013;128(13):1470–1479.

21. Opotowsky AR, Landzberg MJ. Evolving perspectives on heart failure in adults with congenital heart disease: preface. *Heart Fail Clin* 2014;10:xv–xvi.
22. Ubeda Tikkanen A, Opotowsky AR, Bhatt AB, Landzberg MJ, Rhodes J. Physical activity is associated with improved aerobic exercise capacity over time in adults with congenital heart disease. *Int J Cardiol* 2013;168(5):4685–4691.
23. Gorlin R, McMillan IK, Wedd WE, Matthews MB, Daley R. Dynamics of circulation in aortic valvular disease. *Am J Med* 1955;18(6):855–870.
24. Aragam JR, Folland ED, Lapsley D, Sharma S, Khuri SF, Sharma GV. Cause and impact of pulmonary hypertension in isolated aortic stenosis on operative mortality for aortic valve replacement in men. *Am J Cardiol* 1992;69(16):1365–1367.
25. Faggiano P, Antonini-Canterin F, Fibichini F, et al. Pulmonary artery hypertension in adult patients with symptomatic valvular aortic stenosis. *Am J Cardiol* 2000;85(2):204–208.
26. Zlotnick DM, Ouellette ML, Malenka DJ, et al. Effect of preoperative pulmonary hypertension on outcomes in patients with severe aortic stenosis following surgical aortic valve replacement. *Am J Cardiol* 2013;112(10):1635–1640.
27. Rodes-Cabu J, Webb JG, Cheung A, et al. Transcatheter aortic valve implantation for the treatment of severe symptomatic aortic stenosis in patients at very high or prohibitive surgical risk: acute and late outcomes of the multicenter Canadian experience. *J Am Coll Cardiol* 2010;55(11):1080–1090.
28. Ben-Dor I, Goldstein SA, Pichard AD, et al. Clinical profile, prognostic implication, and response to treatment of pulmonary hypertension in patients with severe aortic stenosis. *Am J Cardiol* 2011;107(7):1046–1051.
29. Roselli EE, Abdel Azim A, Houghtaling PL, Jaber WA, Blackstone EH. Pulmonary hypertension is associated with worse early and late outcomes after aortic valve replacement: implications for transcatheter aortic valve replacement. *J Thorac Cardiovasc Surg* 2012;144(5):1067–1074.
30. Lindman BR, Zajarias A, Madrazo JA, et al. Effects of phosphodiesterase type 5 inhibition on systemic and pulmonary hemodynamics and ventricular function in patients with severe symptomatic aortic stenosis. *Circulation* 2012;125(19):2353–2362.
31. Clavel MA, Fuchs C, Burwash IG, et al. Predictors of outcomes in low-flow, low-gradient aortic stenosis: results of the multicenter TOPAS study. *Circulation* 2008;118(suppl. 14):S234–S242.
32. Hoepfer MM, Boggard HJ, Condliffe R, et al. Definitions and diagnosis of pulmonary hypertension. *J Am Coll Cardiol* 2013;62(suppl. 25):D42–D50.
33. Goret L, Tanguy S, Guiraud I, Dauzat M, Obert P. Acute administration of L-arginine restores nitric oxide-mediated relaxation in isolated pulmonary arteries from pulmonary hypertensive exercise trained rats. *Eur J Pharmacol* 2008;581(1–2):148–156.
34. Grunig E, Tiede H, Enyimayew EO, et al. Assessment and prognostic relevance of right ventricular contractile reserve in patients with severe pulmonary hypertension. *Circulation* 2013;128(18):2005–2015.
35. Weiner RB, Baggish AL. Exercise-induced cardiac remodeling. *Prog Cardiovasc Dis* 2012;54(5):380–386.
36. D'Andrea A, Riegler L, Golia E, et al. Range of right heart measurements in top-level athletes: the training impact. *Int J Cardiol* 2013;164(1):48–57.
37. La Gerche A, Burns AT, Mooney DJ, et al. Exercise-induced right ventricular dysfunction and structural remodeling in endurance athletes. *Eur Heart J* 2012;33:998–1006.
38. La Gerche A, Connelly KA, Mooney DJ, MacIsaac AI, Prior DL. Biochemical evidence and functional abnormalities of left and right ventricular function after ultra-endurance exercise. *Heart* 2008;94(7):860–866.
39. Meyer P, Filippatos GS, Ahmed MI, et al. Effects of right ventricular ejection fraction on outcomes in chronic systolic heart failure. *Circulation* 2010;121(2):252–258.
40. Maron BA, Choudhary G, Kahn UA, et al. Clinical profile and underdiagnosis of pulmonary hypertension in U.S. veteran patients. *Circ Heart Fail* 2013;6(5):906–912.
41. Di Salvo TG, Mathier M, Semigran MJ, Dec GW. Preserved right ventricular ejection fraction predicts exercise capacity and survival in advanced heart failure. *J Am Coll Cardiol* 1995;25(5):1143–1153.
42. Kawut SM, Barr RG, Lima JA, et al. Right ventricular structure is associated with the risk of heart failure and cardiovascular death: the Multi-Ethnic Study of Atherosclerosis (MESA)–right ventricle study. *Circulation* 2012;126(14):1681–1688.
43. Saouti N, Westerhof N, Helderma F, et al. Right ventricular oscillatory power is a constant fraction of total power irrespective of pulmonary artery pressure. *Am J Crit Care Med* 2010;182(10):1315–1320.
44. Waxman AB. Exercise physiology and pulmonary arterial hypertension. *Prog Cardiovasc Dis* 2012;55(2):172–179.
45. Delcroix M, Vonk Noordergraaf A, Fadel E, Lang I, Simmoneau G, Naeije R. Vascular and right ventricular remodeling in chronic thromboembolic pulmonary hypertension. *Eur Respir J* 2013;41(1):224–232.
46. Naeije R, Vanderpool R, Dhakal BP, et al. Exercise-induced pulmonary hypertension: physiological basis and methodological concerns. *Am J Respir Crit Care Med* 2013;187:576–583.
47. Forfia PR, Fisher MR, Mathai SC, et al. Tricuspid annular displacement predicts survival in pulmonary hypertension. *Am J Respir Crit Care Med* 2006;174(9):1034–1041.
48. Opotowsky AR, Ojeda J, Rogers F, et al. A simple echocardiographic prediction rule for hemodynamics in pulmonary hypertension. *Circ Cardiovasc Imaging* 2012;5(6):765–775.
49. Naeije R, Chesler N. Pulmonary circulation at exercise. *Compr Physiol* 2012;2(1):711–741.
50. Tolle JJ, Waxman AB, Van Horn TL, Pappagianopoulos PP, Systrom DM. Exercise-induced pulmonary arterial hypertension. *Circulation* 2008;118(21):2183–2189.
51. Osler W. *Bibliotheca Osleriana: a catalogue of books illustrating the history of medicine and science*. Rev. ed. Francis WW, Hill RH, Malloch A, eds. Montreal: McGill-Queen's University Press, (1929) 1969.
52. Adelman H. *Marcello Malpighi and the evolution of embryology*. 5 vols. Ithaca, NY: Cornell University Press, 1966.
53. Ahmad F, Champion HC, Kaminski N. Toward systems biology of pulmonary hypertension. *Circulation* 2012;125(12):1477–1479.

54. Handy DE, Loscalzo J, Leopold JA. Systems analysis of oxidant stress in the vasculature. *IUBMB Life* 2013;65(11):911–920.
55. Stitzel NO, Kiezun A, Sunyaev S. Computational and statistical approaches to analyzing variants identified by exome sequencing. *Genome Biol* 2011;12(9):227.
56. Silverman EK, Loscalzo J. Developing new drug treatments in the era of network medicine. *Clin Pharmacol Ther* 2013; 93(1):26–28.
57. Silverman EK, Loscalzo J. Network medicine approaches to the genetics of complex diseases. *Discov Med* 2012;14(75): 143–152.
58. Barabási AL, Oltvai ZN. Network biology: understanding the cell's functional organization. *Nat Rev Genet* 2004;5(2): 101–113.
59. Jeong H, Mason SP, Barabási AL, Oltvai ZN. Lethality and centrality in protein networks. *Nature* 2001;411(6883):41–42.
60. Zhao Y, Jensen ON. Modification-specific proteomics: strategies for characterization of post-translational modifications using enrichment techniques. *Proteomics* 2009;9(20):4632–4641.
61. Goh KI, Cusick ME, Valle D, Childs B, Vidal M, Barabási AL. The human disease network. *Proc Natl Acad Sci USA* 2007; 104:8685–8690.
62. Barabási AL, Gulbahce N, Loscalzo J. Network medicine: a network-based approach to human disease. *Nat Rev Genet* 2011;12(1):56–68.
63. Berezikov E, Guryev V, van de Belt J, Wienholds E, Plasterk RH, Cuppen E. Phylogenetic shadowing and computational identification of human microRNA genes. *Cell* 2005;120(1):21–24.
64. Parikh VN, Jin RC, Rabello S, et al. MicroRNA-21 integrates pathogenic signaling to control pulmonary hypertension: results of a network bioinformatics approach. *Circulation* 2012; 125(12):1520–1532.
65. Maron BA, Loscalzo J. Pulmonary hypertension: pathophysiology and signaling pathways. *Handb Exp Pharmacol* 2013; 218:31–58.