



DIGITAL ACCESS TO SCHOLARSHIP AT HARVARD

Epigenetic modulation of type-1 diabetes via a dual effect on pancreatic macrophages and cells

The Harvard community has made this article openly available.
[Please share](#) how this access benefits you. Your story matters.

Citation	Fu, W., J. Farache, S. M. Clardy, K. Hattori, P. Mander, K. Lee, I. Rioja, et al. 2014. "Epigenetic modulation of type-1 diabetes via a dual effect on pancreatic macrophages and cells." eLife 3 (1): e04631. doi:10.7554/eLife.04631. http://dx.doi.org/10.7554/eLife.04631 .
Published Version	doi:10.7554/eLife.04631
Accessed	February 17, 2015 12:17:31 PM EST
Citable Link	http://nrs.harvard.edu/urn-3:HUL.InstRepos:13890767
Terms of Use	This article was downloaded from Harvard University's DASH repository, and is made available under the terms and conditions applicable to Other Posted Material, as set forth at http://nrs.harvard.edu/urn-3:HUL.InstRepos:dash.current.terms-of-use#LAA

(Article begins on next page)

Epigenetic modulation of type-1 diabetes via a dual effect on pancreatic macrophages and β cells

Wenxian Fu^{1†}, Julia Farache¹, Susan M Clardy², Kimie Hattori¹, Palwinder Mander³, Kevin Lee^{3†}, Inmaculada Rioja³, Ralph Weissleder², Rab K Prinjha³, Christophe Benoist^{1,4*}, Diane Mathis^{1,4*}

¹Division of Immunology, Department of Microbiology and Immunobiology, Harvard Medical School, Boston, United States; ²Center for Systems Biology, Massachusetts General Hospital, Harvard Medical School, Boston, United States; ³Epinova DPU, Immuno-Inflammation Therapy Area, Medicines Research Centre, GlaxoSmithKline, Stevenage, United Kingdom; ⁴Evergrande Center for Immunologic Diseases, Harvard Medical School and Brigham and Women's Hospital, Boston, United States

Abstract Epigenetic modifiers are an emerging class of anti-tumor drugs, potent in multiple cancer contexts. Their effect on spontaneously developing autoimmune diseases has been little explored. We report that a short treatment with I-BET151, a small-molecule inhibitor of a family of bromodomain-containing transcriptional regulators, irreversibly suppressed development of type-1 diabetes in NOD mice. The inhibitor could prevent or clear insulinitis, but had minimal influence on the transcriptomes of infiltrating and circulating T cells. Rather, it induced pancreatic macrophages to adopt an anti-inflammatory phenotype, impacting the NF- κ B pathway in particular. I-BET151 also elicited regeneration of islet β -cells, inducing proliferation and expression of genes encoding transcription factors key to β -cell differentiation/function. The effect on β cells did not require T cell infiltration of the islets. Thus, treatment with I-BET151 achieves a 'combination therapy' currently advocated by many diabetes investigators, operating by a novel mechanism that coincidentally dampens islet inflammation and enhances β -cell regeneration.

DOI: [10.7554/eLife.04631.001](https://doi.org/10.7554/eLife.04631.001)

*For correspondence: dm@hms.harvard.edu

Present address: [†]Department of Pediatrics, University of California, San Diego, La Jolla, United States; ^{*}Rare Disease Research Unit, Pfizer, Cambridge, United States

Competing interests: See page 16


Funding: See page 16

Received: 05 September 2014

Accepted: 19 November 2014

Published: 19 November 2014

Reviewing editor: Shimon Sakaguchi, Osaka University, Japan

 Copyright Fu et al. This article is distributed under the terms of the [Creative Commons Attribution License](https://creativecommons.org/licenses/by/4.0/), which permits unrestricted use and redistribution provided that the original author and source are credited.

Introduction

Acetylation of lysine residues on histones and non-histone proteins is an important epigenetic modification of chromatin (*Kouzarides, 2000*). Multiple 'writers', 'erasers', and 'readers' of this modification have been identified: histone acetyltransferases (HATs) that introduce acetyl groups, histone deacetylases (HDACs) that remove them, and bromodomain (BRD)-containing proteins that specifically recognize them. Chromatin acetylation impacts multiple fundamental cellular processes, and its dysregulation has been linked to a variety of disease states, notably various cancers (*Dawson and Kouzarides, 2012*). Not surprisingly, then, drugs that modulate the activities of HATs or HDACs or, most recently, that block acetyl-lysine:BRD interactions are under active development in the oncology field.

BRDs, conserved from yeast to humans, are domains of approximately 110 amino-acids that recognize acetylation marks on histones (primarily H3 and H4) and certain non-histone proteins (e.g., the transcription factor, NF- κ B), and serve as scaffolds for the assembly of multi-protein complexes that regulate transcription (*Dawson et al., 2011; Prinjha et al., 2012*). The BET subfamily of BRD-containing proteins (BRDs 2, 3, 4 and T) is distinguished as having tandem bromodomains followed by an 'extra-terminal' domain. One of its members, Brd4, is critical for both 'bookmarking'

eLife digest The DNA inside a cell is often tightly wrapped around proteins to form a compact structure called chromatin. Chemical groups added to the chromatin can encourage nearby genes to either be switched on or off; and several enzymes and other proteins help to read, add, or remove these marks from the chromatin. If these chromatin modifications (or the related enzymes and proteins) are disturbed it can lead to diseases like cancer. It has also been suggested that similar changes may influence autoimmune diseases, in which the immune system attacks the body's own tissues.

Drugs that target the proteins that read, add, or remove these chromatin modifications are currently being developed to treat cancer. For example, drugs that inhibit one family of these proteins called BET have helped to treat tumors in mice that have cancers of the blood or lymph nodes. However, because these drugs target pathways involved in the immune system they may also be useful for treating autoimmune diseases.

Now Fu et al. have tested whether a BET inhibitor might be a useful treatment for type-1 diabetes. In patients with type-1 diabetes, the cells in the pancreas that produce the insulin hormone are killed off by the immune system. Without adequate levels of insulin, individuals with type-1 diabetes may experience dangerous highs and lows in their blood sugar levels and must take insulin and sometimes other medications.

Using mice that spontaneously develop type-1 diabetes when still relatively young, Fu et al. tested what would happen if the mice received a BET inhibitor for just 2 weeks early on in life. Treated mice were protected from developing type-1 diabetes for the rest of their lives. Specifically, the treatment protected the insulin-producing cells and allowed them to continue producing insulin. The drug reduced inflammation in the pancreas and increased the expression of genes that promote the regeneration of insulin-producing cells.

Diabetes researchers have been searching for drug combinations that protect the insulin-producing cells and boost their regeneration. As such, Fu et al. suggest that these findings justify further studies to see if BET inhibitors may help to treat or prevent type-1 diabetes in humans.

DOI: [10.7554/eLife.04631.002](https://doi.org/10.7554/eLife.04631.002)

transcribed loci post-mitotically (*Zhao et al., 2011*) and surmounting RNA polymerase pausing downstream of transcription initiation (*Jang et al., 2005; Hargreaves et al., 2009; Anand et al., 2013; Patel et al., 2013*).

Recently, small-molecule inhibitors of BET proteins, for example, JQ1 and I-BET, were found to be effective inhibitors of multiple types of mouse tumors, including a NUT midline carcinoma, leukemias, lymphomas and multiple myeloma (*Filippakopoulos et al., 2010; Dawson et al., 2011; Delmore et al., 2011; Zuber et al., 2011*). A major, but not the unique, focus of inhibition was the Myc pathway (*Delmore et al., 2011; Mertz et al., 2011; Zuber et al., 2011; Lockwood et al., 2012*). In addition, BET-protein inhibitors could prevent or reverse endotoxic shock induced by systemic injection of bacterial lipopolysaccharide (LPS) (*Nicodeme et al., 2010; Seal et al., 2012; Belkina et al., 2013*). The primary cellular focus of action was macrophages, and genes induced by the transcription factor NF- κ B were key molecular targets (*Nicodeme et al., 2010; Belkina et al., 2013*).

Given several recent successes at transposing drugs developed for cancer therapy to the context of autoimmunity, it was logical to explore the effect of BET-protein inhibitors on autoimmune disease. We wondered how they might impact type-1 diabetes (T1D), hallmarked by specific destruction of the insulin-producing β cells of the pancreatic islets (*Bluestone et al., 2010*). NOD mice, the 'gold standard' T1D model (*Anderson and Bluestone, 2005*), spontaneously and universally develop insulinitis at 4–6 weeks of age, while overt diabetes manifests in a subset of individuals beginning from 12–15 weeks, depending on the particular colony. NOD diabetes is primarily a T-cell-mediated disease, but other immune cells—such as B cells, natural killer cells, macrophages (MFs) and dendritic cells (DCs)—also play significant roles. We demonstrate that a punctual, 2-week, treatment of early- or late-stage prediabetic NOD mice with I-BET151 affords long-term protection from diabetes. Mechanistic dissection of this effect revealed important drug influences on both MFs and β cells, in particular on the NF- κ B pathway. On the basis of these findings, we argue that epigenetic modifiers are an exciting, emerging option for therapeutic intervention in autoimmune diabetes.

Results

I-BET151 protects NOD mice from development of diabetes

T1D progresses through identifiable phases, which are differentially sensitive to therapeutic intervention (Bluestone *et al.*, 2010). Therefore, we treated NOD mice with the BET-protein inhibitor, I-BET151 (GSK1210151A [Dawson *et al.*, 2011; Seal *et al.*, 2012]) according to three different protocols: from 3–5 weeks of age (incipient insulinitis), from 12–14 weeks of age (established insulinitis), or for 2 weeks beginning within a day after diagnosis of hyperglycemia (diabetes). Blood-glucose levels of insulinitic mice were monitored until 30 weeks of age, after which animals in our colony generally do not progress to diabetes.

I-BET151 prevented diabetes development, no matter whether the treated cohort had incipient (Figure 1A) or established (Figure 1B) insulinitis. However, the long-term protection afforded by a 2-week treatment of pre-diabetic mice was only rarely observed with recent-onset diabetic animals. Just after diagnosis, individuals were given a subcutaneous insulin implant, which lowers blood-glucose levels to the normal range within 2 days, where they remain for only about 7 days in the absence of further insulin supplementation (Figure 1C, upper and right panels). Normoglycemia was significantly prolonged in mice treated for 2 weeks with I-BET151; but, upon drug removal, hyperglycemia rapidly ensued in most animals (Figure 1C, lower and right panels). The lack of disease reversal under these conditions suggests that β -cell destruction had proceeded to the point that dampening the autoinflammatory attack was not enough to stem hyperglycemia. However, there was prolonged protection from diabetes in a few cases, suggesting that it might prove worthwhile to explore additional treatment designs in future studies.

As a first step in dissecting the mechanisms of I-BET151 action, we examined its effect on insulinitis. Analogous to the protocols employed above, NOD mice were treated with I-BET151 from 3–5 or 12–14 weeks of age, and their pancreas was excised for histology at 10 weeks (5 weeks being too early for quantification) or 14 weeks, respectively. Drug treatment prevented effective installation of insulinitis in the young mice (Figure 1D) and reversed established insulinitis in the older animals (Figure 1E).

Next, we performed flow cytometric analysis of the pancreatic infiltrate. In this and subsequent mechanistic studies, we focused mainly on the 12–14-week treatment protocol because, of the successful regimens, it better models what might eventually be applied to humans. Consistent with the histological results, fewer total leukocytes (CD45⁺ cells) were found in the pancreas, but not the spleen, of mice administered I-BET151 from 12–14 weeks of age, *vis a vis* vehicle-only controls (Figure 1F). The drop in pancreas-infiltrating cells in animals treated with the inhibitor was equally true of all populations examined (encompassing the major lymphoid and myeloid subsets) as their fractional representation within the bulk CD45⁺ compartment appeared to be unaltered in drug- vs vehicle-treated individuals (Figure 1G).

BET protein inhibition has a minimal effect on T cells in NOD mice

Given that NOD diabetes is heavily dependent on CD4⁺ T cells (Anderson and Bluestone, 2005), and that a few recent reports have highlighted an influence of BET-protein inhibitors on the differentiation of T helper (Th) subsets in induced models of autoimmunity (Bandukwala *et al.*, 2012; Mele *et al.*, 2013), we explored the effect of I-BET151 treatment on the transcriptome of CD4⁺ T cells isolated from relevant sites; that is, the infiltrated pancreas, draining pancreatic lymph nodes (PLNs), and control inguinal lymph nodes (ILNs). Microarray analysis of gene expression revealed surprisingly little impact of the 2-week treatment protocol on any of these populations, similar to what was observed when comparing randomly shuffled datasets (Figure 2A). It is possible that the above protocol missed important effects on T cells because those remaining after prolonged drug treatment were skewed for 'survivors'. Therefore, we also examined the transcriptomes of pancreas-infiltrating CD4⁺ T cells at just 12, 24 or 48 hr after a single administration of I-BET151. Again, minimal, background-level, differences were observed in the gene-expression profiles of drug- and vehicle-treated mice (Figure 2B).

Signature analysis, wherein we superimposed existing Th1, Th2, Th17 or Treg gene-expression signatures on p-value vs fold-change (FC) volcano plots, failed to reveal statistically significant skewing within the transcriptomes of pancreatic CD4⁺ T cells from mice administered I-BET151 vs vehicle using either the 2-week or short-term protocols, with the possible exception of a slightly weaker Treg down-signature in I-BET151-treated animals (Figure 2C). Yet, we found no differences in the fraction of Tregs in the pancreatic CD4⁺ T cell compartment, their Foxp3 expression levels or their display of

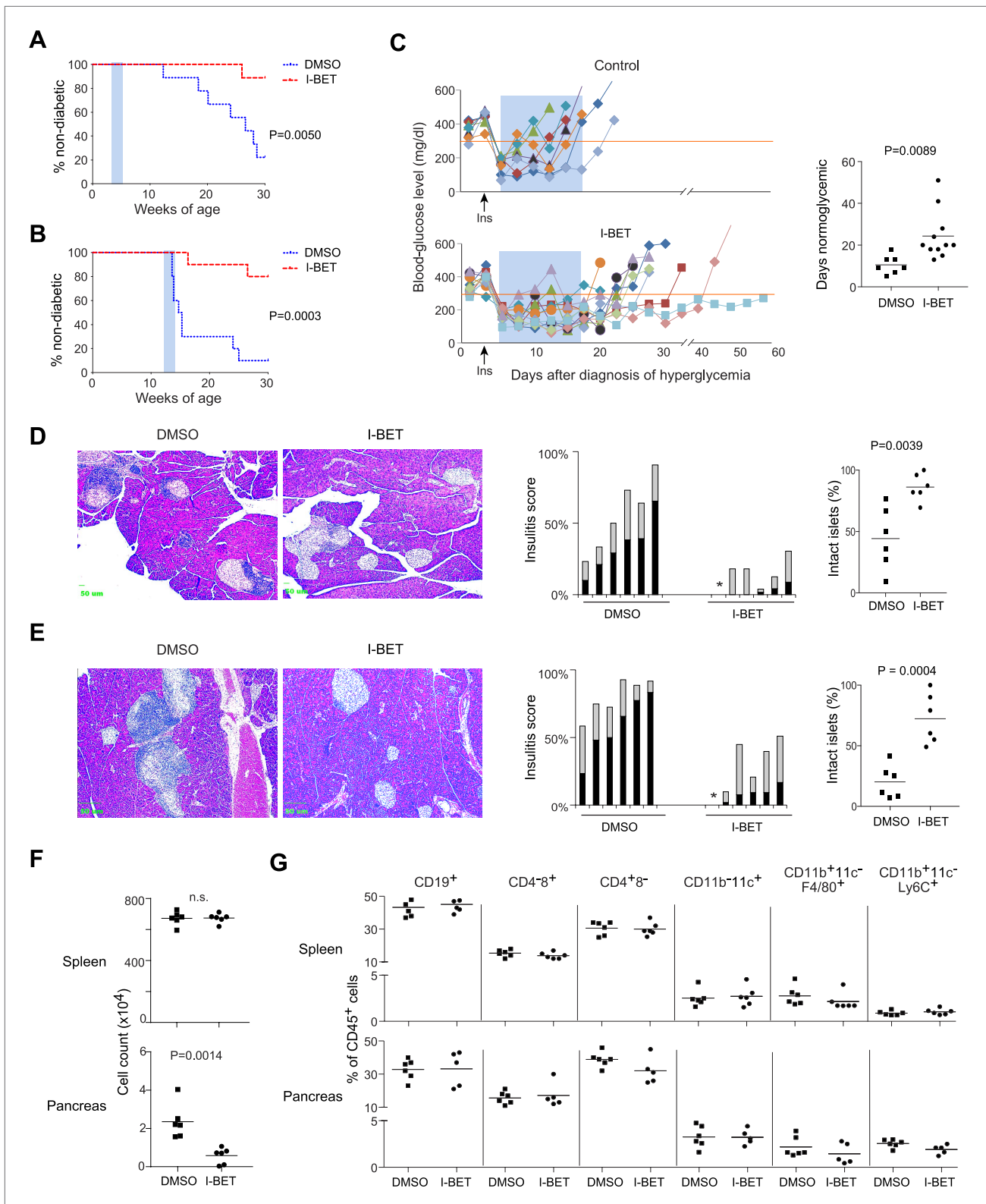


Figure 1. I-BET151 inhibits diabetes and insulinitis in NOD mice. Female NOD mice were treated with I-BET151 in DMSO (10 mg/kg daily) or just DMSO from 3–5 weeks (**A** and **D**) or 12–14 weeks (**B** and **E**) of age. (**A** and **B**) Pre-diabetic mice. Hyperglycemia was monitored until 30 weeks of age. n = 10 per group. Blue shading = treatment window. (**C**) Recent-onset diabetic mice. Left: Individual blood-glucose curves. An insulin pellet was implanted subcutaneously within 1 day of diabetes diagnosis (arrow). 2 days later, I-BET151 (10 mg/kg) or DMSO was administered daily for 2 weeks (shaded blue). *Figure 1. Continued on next page*

Figure 1. Continued

Right: duration of normoglycemia. $n = 7$ or 11 . (**D** and **E**) Insulinitis was visualized by H&E staining of paraffin sections. Left: representative histology. Middle: insulinitis scores for individual mice. Grey = peri-insulinitis; black = insulinitis. The asterisk indicates no insulinitis in any of the sections examined. Right: summary of the proportions of intact islets for individual mice. (**F**) Left: Total CD45⁺ cells from the spleen (upper panel) or pancreatic islets (lower panel) from mice treated with I-BET151 or DMSO as per **Figure 1B**, and analyzed at 14 weeks. $n = 6$. (**G**) Summary data on the major immune-cell subsets as a fraction of CD45⁺ cells, from the spleen (upper panels) or pancreas (lower panels). $n = 5$ or 6 . p values in **A** and **B** are from Gehan-Breslow-Wilcoxon tests and in **C–G** are from Student's t tests.

DOI: 10.7554/eLife.04631.003

CD25 (**Figure 2D**). Nor, in contrast to a recent report on antigen + adjuvant induced autoimmune diseases (**Mele et al., 2013**), could we demonstrate differences in the Th17 population—either the fraction of CD4⁺ cells expressing IL-17A or its expression level (**Figure 2E**). It remains possible, however, that parameters we did not assay (e.g., splicing, microRNAs) might have been different.

I-BET151 induces a regulatory phenotype in the pancreatic macrophage population

To obtain a broader, unbiased view of the inhibitor's effect on the NOD pancreatic infiltrate, we undertook a transcriptome analysis of the bulk CD45⁺ cell population. The 2-week and short-term treatment protocols both resulted in sets of over- and under-represented transcripts (**Figure 3A,B** and **Supplementary files 1, 2**). Interestingly, the set of decreased transcripts was evident sooner than the set of increased transcripts—the former troughing already at 12 hr, the latter still rising at 48 hr (**Figure 3B**). Taking advantage of data-sets from the Immunological Genome Project (ImmGen; www.immgen.org), which has profiled gene expression for over 200 immunocyte populations, we found the over-represented transcripts to be indicative of myeloid-lineage cells, in particular tissue-resident MFs (**Figure 3C**). While it is possible that the changes in transcript levels reflect alterations in the relative representation of myeloid cell populations, we think rather that they resulted at least partially from gene induction or repression because they were so rapid and because only a fraction of the transcript set characteristic of any particular cell-type showed an altered level of expression. Gene-set enrichment analysis (GSEA) also highlighted transcriptional programs characteristic of MFs, the highest enrichment values being obtained for the eicosanoid, relevant nuclear receptor and complement pathways (**Figure 3D**). All three of these pathways have been demonstrated to play a role in the resolution of inflammation, through multiple mechanisms, including the production of anti-inflammatory mediators and suppression of T cell responses (**Bensinger and Tontonoz, 2008; Ricklin et al., 2010; Serhan, 2011; Lone and Tasken, 2013**). Parallel analyses on the set of pancreatic CD45⁺ cell transcripts under-represented in inhibitor-treated mice showed no striking enrichment across the ImmGen data-sets (**Figure 3E**). And GSEA did not reveal any particular pathways to be significantly enriched.

We then focused specifically on the impact of I-BET151 on the NF- κ B pathway in pancreatic leukocytes, with the following considerations in mind: (1) NF- κ B is a critical player in many types of inflammation, exerting both pro- and anti-inflammatory influences (**Vallabhapurapu and Karin, 2009**); (2) specifically, NF- κ B has been implicated in T1D (**Rink et al., 2012**); (3) direct binding of a BET protein, Brd4, to the RelA subunit of NF- κ B has been documented (**Huang et al., 2009; Zhang et al., 2012; Zou et al., 2014**); and (4) BET inhibitors are known to influence the NF- κ B-induced transcriptional program in MFs (**Nicodeme et al., 2010**). Interestingly, both 2-week and short-term treatment of NOD mice with I-BET151 had a dichotomous effect on the NF- κ B target genes expressed by pancreatic leukocytes (**Figure 4A**, upper left panels, and **Supplementary file 3**; target genes extracted from [**Gilmore, 2006**]). Pathway analysis using Ingenuity showed that, amongst these NF- κ B targets, pro-inflammatory genes, particularly those encoding proteins in the tumor necrosis factor (TNF) α -induced canonical NF- κ B activation pathway, were under-represented; while anti-inflammatory loci, notably those specifying molecules implicated in signaling by nuclear receptor family members, that is, the peroxisome proliferator-activated receptor (PPAR) and liver-X-receptor (LXR) families, were over-represented subsequent to I-BET151 treatment (**Figure 4A**, upper right). These findings were confirmed by examining expression of pathway signature genes derived from the Molecular Signatures Database (www.broadinstitute.org/gsea/msigdb): again the TNF-induced NF- κ B activation pathway was down-regulated and the two nuclear receptor pathways up-regulated (**Figure 4A**, lower panel). There were no such effects on CD45⁺ cells isolated from the spleen or lymph nodes of the same mice.

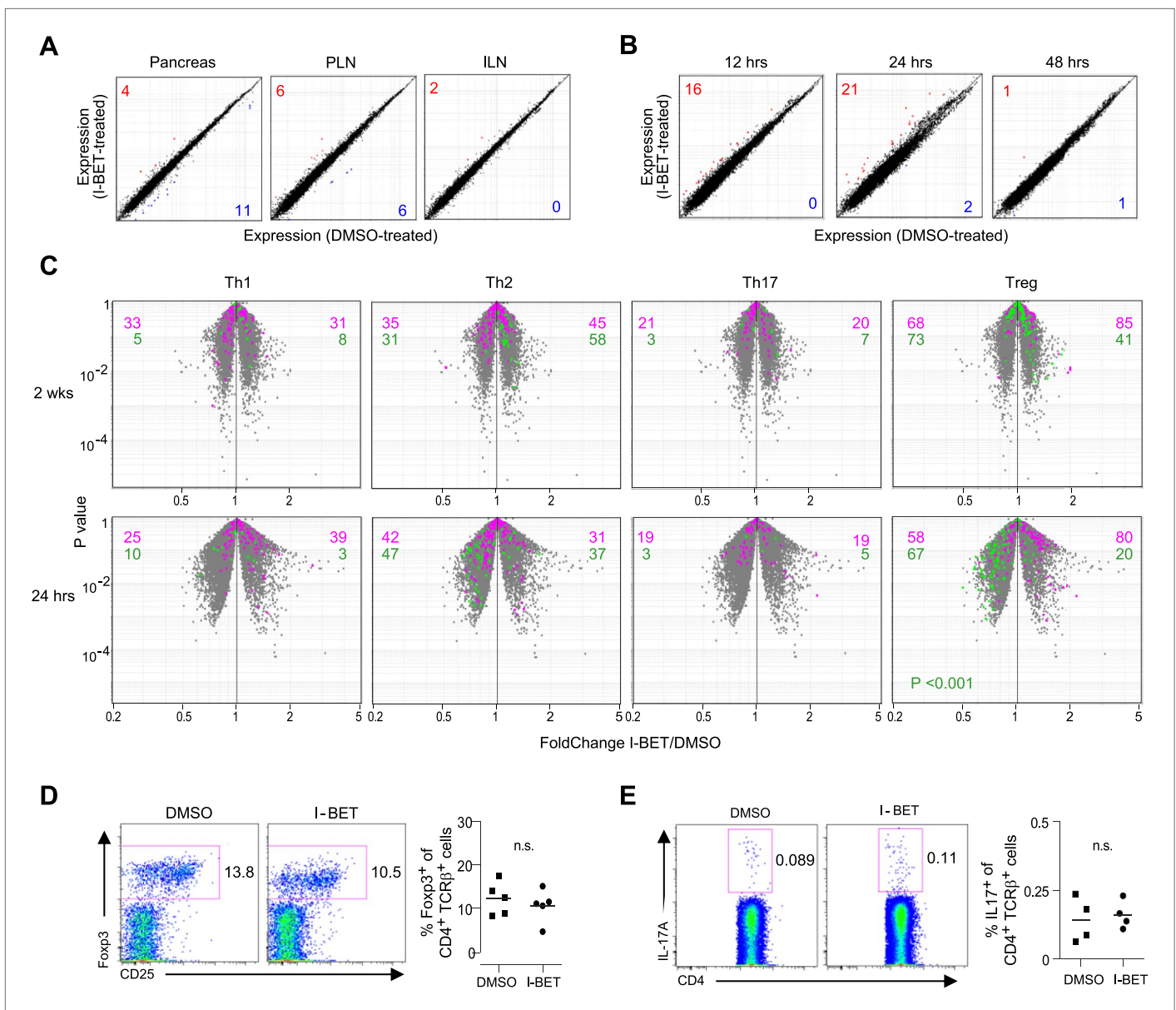


Figure 2. Little impact of BET-protein inhibition on CD4⁺ T cells in NOD mice. **(A)** Microarray-based transcriptional profiling of TCR⁺CD4⁺ cells sorted from pancreata, pancreatic lymph nodes (PLNs) and inguinal lymph nodes (ILNs). Comparison plot of I-BET151- and DMSO-treated mice as per **Figure 1B** and analyzed at 14 weeks of age. Red, transcripts increased >twofold by I-BET151; blue, transcripts >twofold decreased. **(B)** Analogous plots of TCR⁺CD4⁺ cells sorted from the pancreas of mice given a single I-BET151 (10 mg/kg) or DMSO injection, and analyzed 12, 24 or 48 hr later. **(C)** Th1, Th2, Th17 or Treg signatures (see 'Materials and methods') were superimposed on volcano plots comparing the transcriptomes of TCR⁺CD4⁺ cells from the pancreas of mice treated with I-BET151 or DMSO either as per **Figure 1B** and analyzed at 14 weeks of age (upper panels) or with a single injection and analyzed 24 hr later (lower panels). Purple: over-represented signature transcripts; Green: under-represented signature transcripts. **(D and E)** Proportions of Treg **(D)** or Th17 **(E)** cells within the TCR⁺CD4⁺ population in the pancreas of I-BET151- or DMSO-treated mice. Left, representative cytofluorometric dot plots; right, summary data. n = 4–5. p values in panel **C** are from the Chi-squared test (the single significant value is shown; all others were not significant) and in **D–E** from Student's t tests.

DOI: 10.7554/eLife.04631.004

We evaluated to what extent an NF-κB inhibitor could mimic the effects of I-BET151. Given its greater toxicity, a single dose of BAY 11–7082 (which blocks IκBα phosphorylation) was administered to 12-week-old NOD mice, and pancreatic CD45⁺ cells were isolated for transcriptome analysis 24 hr later. When the sets of genes over- or under-represented in the CD45⁺ population of I-BET151-treated mice (drawn from **Figure 3A,B**) were superimposed on a volcano plot of transcripts from CD45⁺ cells

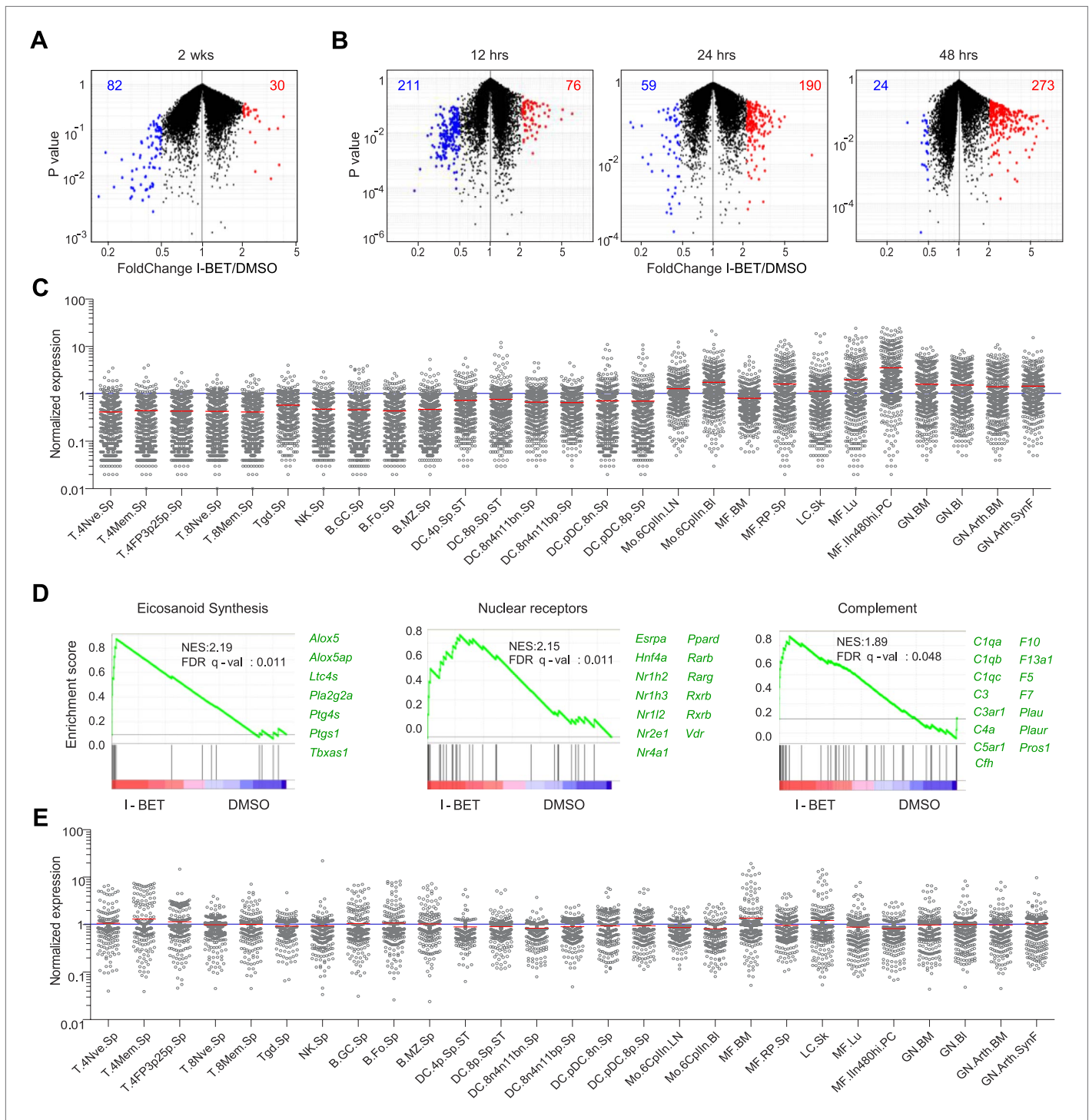


Figure 3. I-BET151 treatment promotes an MF-like, anti-inflammatory transcriptional program in pancreatic CD45⁺ cells. **(A and B)** A volcano plot comparing the transcriptomes of pancreatic CD45⁺ cells from mice treated with I-BET151 or DMSO as per **Figure 1B**. Red: transcripts increased >twofold; blue: transcripts decreased >twofold; numbers of modulated transcripts are indicated in the corresponding color. **(B)** Analogous plots for mice given a single injection of I-BET151 (10 mg/kg) or DMSO only, and analyzed 12, 24 or 48 hr later. **(C)** Cell-type distribution of the totality of transcripts whose expression was increased >twofold in panels **A** and **B** (red). Expression data for and definition of the various cell-types came from ImmGen (www.immgen.org). Langerhans cells of the skin (LC.SK) have been re-positioned as per recent data ([Gautier et al., 2012](#)). Expression values were row-normalized. **(D)** GSEA of the totality of transcripts increased in pancreatic CD45⁺ cells of mice treated with I-BET151 (red dots in panels **A** and **B**). NES, normalized enrichment score. Representative genes showing increased expression on the right. **(E)** A plot analogous to that in panel **C** for the totality of transcripts >twofold under-represented in drug-treated mice (blue dots in panels **A** and **B**).

DOI: [10.7554/eLife.04631.005](https://doi.org/10.7554/eLife.04631.005)

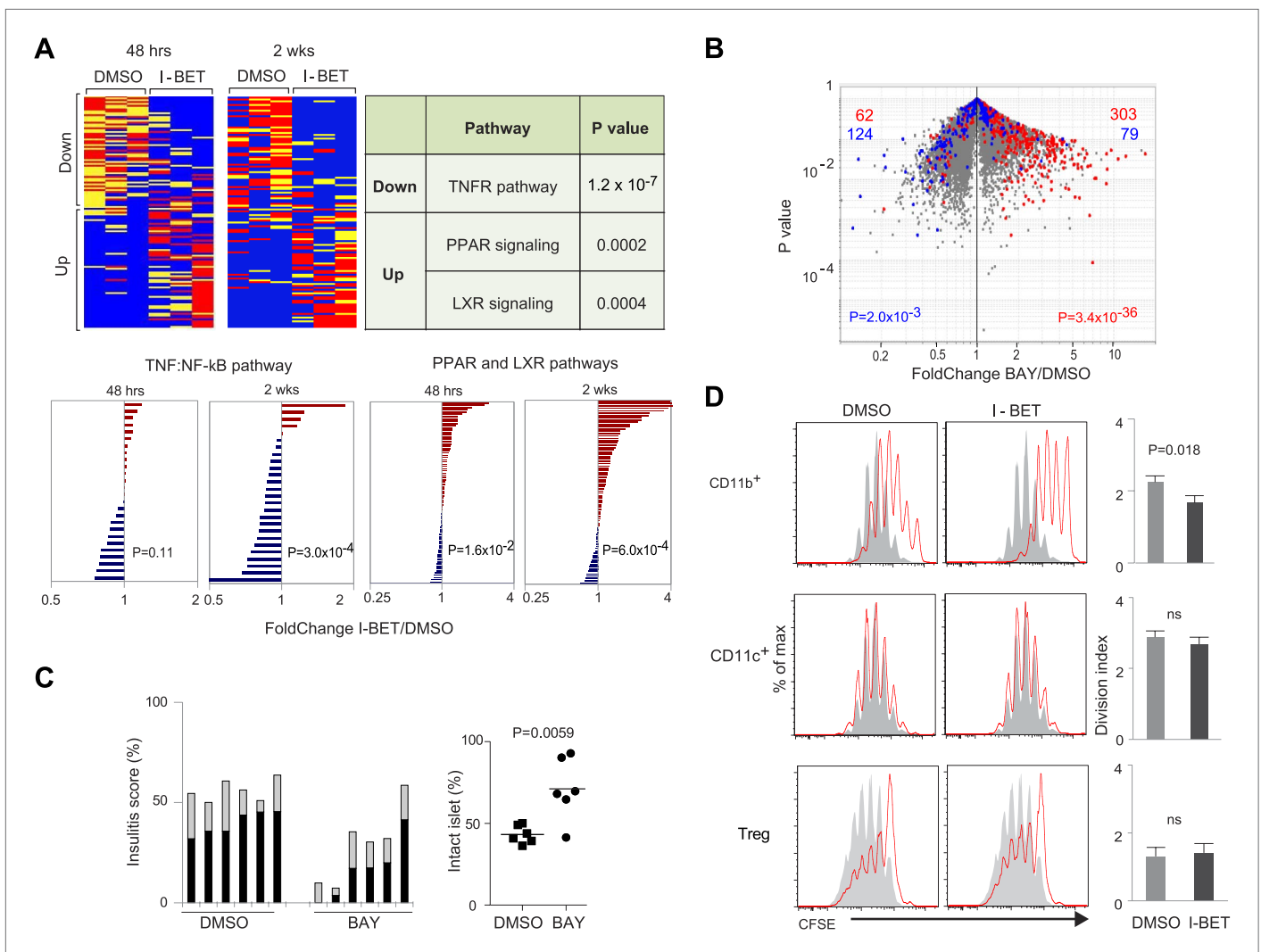


Figure 4. The NF- κ B signaling pathway is a major focus of I-BET151's influence on NOD leukocytes. **(A)** Upper panels: The inhibitor's effect on NF- κ B-regulated genes—defined as per <http://www.bu.edu/nf-kb/gene-resources/target-genes>. Left, relevant transcripts from pancreatic CD45⁺ cells of NOD mice treated long- or short-term with I-BET151 or DMSO. Red: over-represented; blue: under-represented. 2 wk: long-term, treatment as per **Figure 1B**; 48 hr: short-term, treatment with a single 10 mg/kg dose and analyzed 48 hr later. Right, signaling pathways represented by the enriched or impoverished transcripts in the data to the left, via Ingenuity pathway analysis (www.ingenuity.com). Lower panels: Gene sets corresponding to the TNF α -induced canonical NF- κ B pathway ([Schaefer et al., 2009](http://www.schaefer.org)) or the PPAR and LXR pathways (<http://www.genome.jp/kegg/pathway/hsa/hsa03320.html>) were retrieved from the Broad Institute's Molecular Signatures Database (<http://www.broadinstitute.org/gsea/msigdb>), and their expression levels in CD45⁺ cells from pancreas of I-BET151- or vehicle-treated mice plotted. **(B)** 12-week-old NOD mice were injected once ip with BAY 11-7082 (10 mg/kg), sacrificed 24 hr later, and CD45⁺ cells from the pancreas isolated and transcriptionally profiled. A volcano plot comparing treatment with BAY 11-7082 and DMSO, with genes >twofold increased (in red) or decreased (in blue) by I-BET151 treatment (pooled from all time-points of **Figure 3A,B**) superimposed. **(C)** Effect of a single dose of 10 mg/kg BAY 11-7082 on insulinitis in 12-week-old NOD mice, analyzed 24 hr after injection. Left: insulinitis scores. Right: summary data for the fraction of islets with no infiltrate. Grey, peri-insulinitis; Black, insulinitis. **(D)** Suppression of in vitro T cell proliferation by cell populations isolated from the pancreas of I-BET151- or DMSO- treated mice (as per **Figure 1B**). The CD11b⁺CD11c⁻ (top), CD11b⁻CD11c⁺ (middle) and TCR β ⁺CD4⁺CD25⁺ (bottom) fractions of CD45⁺ cells were sorted. To the left are representative plots of CFSE dilution; to the right are summary data quantifying division indices (see 'Materials and methods' for details). p values in **A** and **B** are from the chi-squared test, and in **C** and **D** are from the Student's t test.

DOI: [10.7554/eLife.04631.006](https://doi.org/10.7554/eLife.04631.006)

of animals given BAY 11-7082 vs vehicle, there was an impressive correspondence, particularly for the enriched transcripts (**Figure 4B**). The match was not perfect, however, as some genes modulated by the BET-protein inhibitor were not affected by the NF- κ B inhibitor and vice versa (**Figure 4B**). Perhaps not surprisingly, then, BAY 11-7082, even a single dose, could substantially clear NOD insulinitis (**Figure 4C**).

(Note that it was not possible to assess the effect of this drug on diabetes development because its toxicity precluded multiple administrations.)

We performed co-culture experiments to confirm the disease-dampening potential of pancreatic MFs from mice administered BET inhibitor. As T cells are key orchestrators of NOD diabetes (**Anderson and Bluestone, 2005**), we examined the ability of various cell-types isolated from the pancreas of mice treated with I-BET151 or vehicle to impact an in vitro T cell proliferation assay, quantifying CFSE dilution of CD3/CD28-stimulated cells (**Figure 4D**). The CD11b⁺ population from the pancreas of vehicle-treated mice was capable of repressing T cell proliferation, but the corresponding population from mice administered I-BET151 exhibited significantly more potent suppressive activity. Co-cultured CD11c⁺ cells did not appear to affect T cell proliferation whether isolated from control- or drug-treated mice. Treg cells isolated from the two types of mice were equally able to inhibit T cell proliferation.

It was obviously of interest to see whether I-BET151 exerted similar effects on human MFs. CD14⁺ cells pooled from the peripheral blood of three donors were differentiated in culture; they were then incubated with I-BET151 or vehicle for 30 min, before stimulation with LPS for 4 hr; at which time, RNA was isolated for transcriptional profiling. A rank-order FC plot showed that the inhibitor greatly dampened the typical MF response to LPS (**Figure 5A**). Focusing on the NF- κ B pathway: most (32/43) of the target genes inhibited in murine CD45⁺ cells were also suppressed in human MFs (**Figure 5B**). In particular, there was suppression of secondary, over primary, LPS-response genes (**Figure 5C**), as was previously reported for BET inhibitor treatment of mouse bone-marrow-derived MFs (**Nicodeme et al., 2010**).

BET-protein inhibition promotes regeneration of NOD β cells

We questioned whether the disease-protective effect of I-BET151 also entailed an influence on the target of the autoimmune attack, pancreatic islet β cells. As an initial approach, we compared global gene-expression profiles of flow-cytometrically purified β cells from NOD mice treated from 12–14 weeks of age with I-BET151 or vehicle. A set of about 300 transcripts was over-represented >twofold in mice given the inhibitor; and about 10-fold fewer were under-represented >twofold (FDR < 5%) (**Figure 6A** and **Supplementary file 4**). The subset of genes whose expression was increased most by the inhibitor encoded multiple members of the regenerating islet-derived (Reg) protein family, originally identified for their involvement in pancreas regeneration (**Figure 6B**, in red) (**Unno et al., 1992; Huszarik et al., 2010**); several transcription factors (TFs) important for regeneration of β -cells (in green) (**Pagliuca and Melton, 2013; Shih et al., 2013**); and a number of proteins known to enhance insulin production (in blue) (**Hirayama et al., 1999; Dai et al., 2006; Winzell and Ahren, 2007**). Interestingly, the most highly induced subset of genes also included a number of loci usually associated with neural function, encoding, for example, survival factors (*Cntfr*, *Tox3*) or promoters of synaptic development or function (*Snap25*, *Lrrtm2*, *Lgi1*). The top signaling pathways to emerge via GSEA were the IGF-1, IGF/mTOR, PDGF and insulin-secretion pathways (although, due to the relatively small number of genes involved, statistical significance was not reached).

The NF- κ B pathway has been implicated in the death of β -cells associated with T1D, mainly the branches downstream of inflammatory cytokine and stress stimuli (**Cardozo et al., 2001; Cnop et al., 2005; Eldor et al., 2006**). Several NF- κ B-dependent transcripts previously reported to be induced in β cells by the inflammatory cytokines IL-1 β and IFN- γ (**Cardozo et al., 2001**) were suppressed by I-BET151, for example, *Icam1*, 1.45-fold; *Traf2*, 1.28-fold; *Fabp5*, 1.23-fold. Overall, then, I-BET151 appeared to have a positive impact on β -cell regeneration and/or function.

To determine whether BET-protein inhibition induced proliferation of β cells, we treated 12-week-old NOD mice for the usual 2 weeks with I-BET151 or vehicle, injected them with 5-ethyl-2-deoxyuridine EdU 24 hr before sacrifice, and quantified EdU incorporation by β cells, delineated by their high auto-fluorescence and strong staining with a fluorescently conjugated exendin peptide probe (**Figure 6C**). Both the number and fraction of EdU⁺ β cells were significantly increased in I-BET151-treated mice (**Figure 6D**). Analogous results were obtained using fluorescent microscopy to quantify EdU⁺ insulin-expressing β cells (**Figure 6—figure supplement 1**).

Since it has been reported that T cells in the immune infiltrate can induce β -cell replication (**Sreenan et al., 1999; Sherry et al., 2006; Dirice et al., 2013**), we repeated the preceding experiments on Rag1-deficient NOD mice in order to address the possibility of a secondary effect mediated through lymphocytes. Transcriptional analysis revealed that most of the β -cell transcripts over-represented

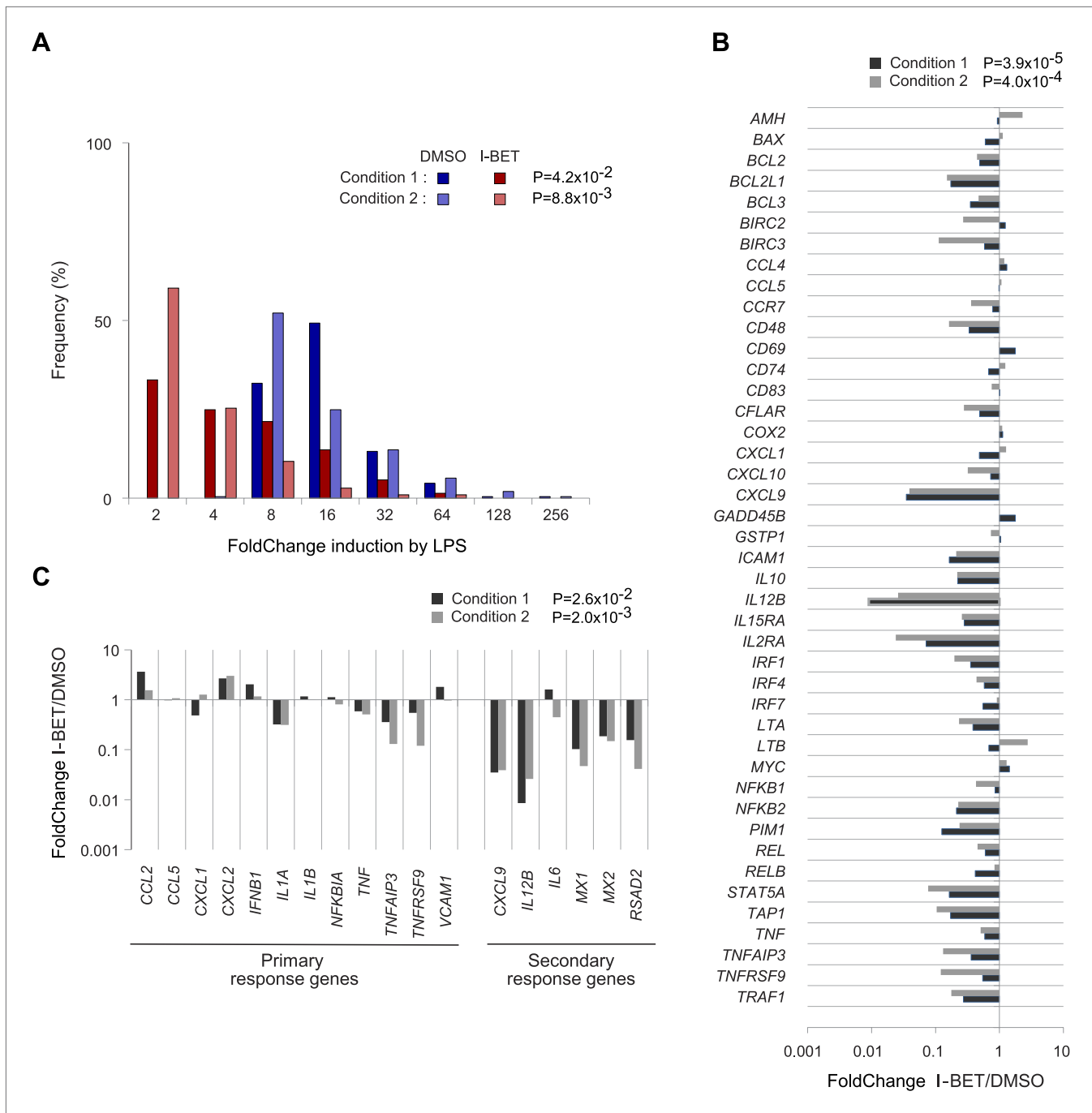


Figure 5. Effects of I-BET151 on human monocyte-derived MFs. Cultures of human MFs were differentiated from peripheral-blood-derived CD14⁺ cells, pre-cultured for 30 min with I-BET151 (red bars) or just DMSO (blue bars), and stimulated for another 4 hr after the addition of LPS (100 ng/ml) or vehicle only. Microarray data from two conditions, as indicated and detailed in 'Materials and methods'. **(A)** Distribution of FCs of I-BET151/DMSO for LPS-induced genes (according to the data on human monocyte-derived MFs treated with LPS or just vehicle). **(B)** FCs of I-BET151/DMSO of the human orthologues of the set of murine NF- κ B-regulated genes illustrated in **Figure 4A**. **(C)** Effects of I-BET151 on primary and secondary LPS-response genes (defined as per [Hargreaves et al., 2009; Ramirez-Carrozzi et al., 2009]).

DOI: 10.7554/eLife.04631.007

>twofold by treatment of standard NOD mice with I-BET151 were also increased in inhibitor-injected NOD mice lacking T and B cells, and thereby devoid of insulinitis (**Figure 6E**; and the transcripts highlighted in panel 6B are precisely positioned in panel 6F). In addition, there was a clear induction of β -cell proliferation in the absence of insulinitis (**Figure 6**, panel G and **Figure 6—figure supplement 2**).

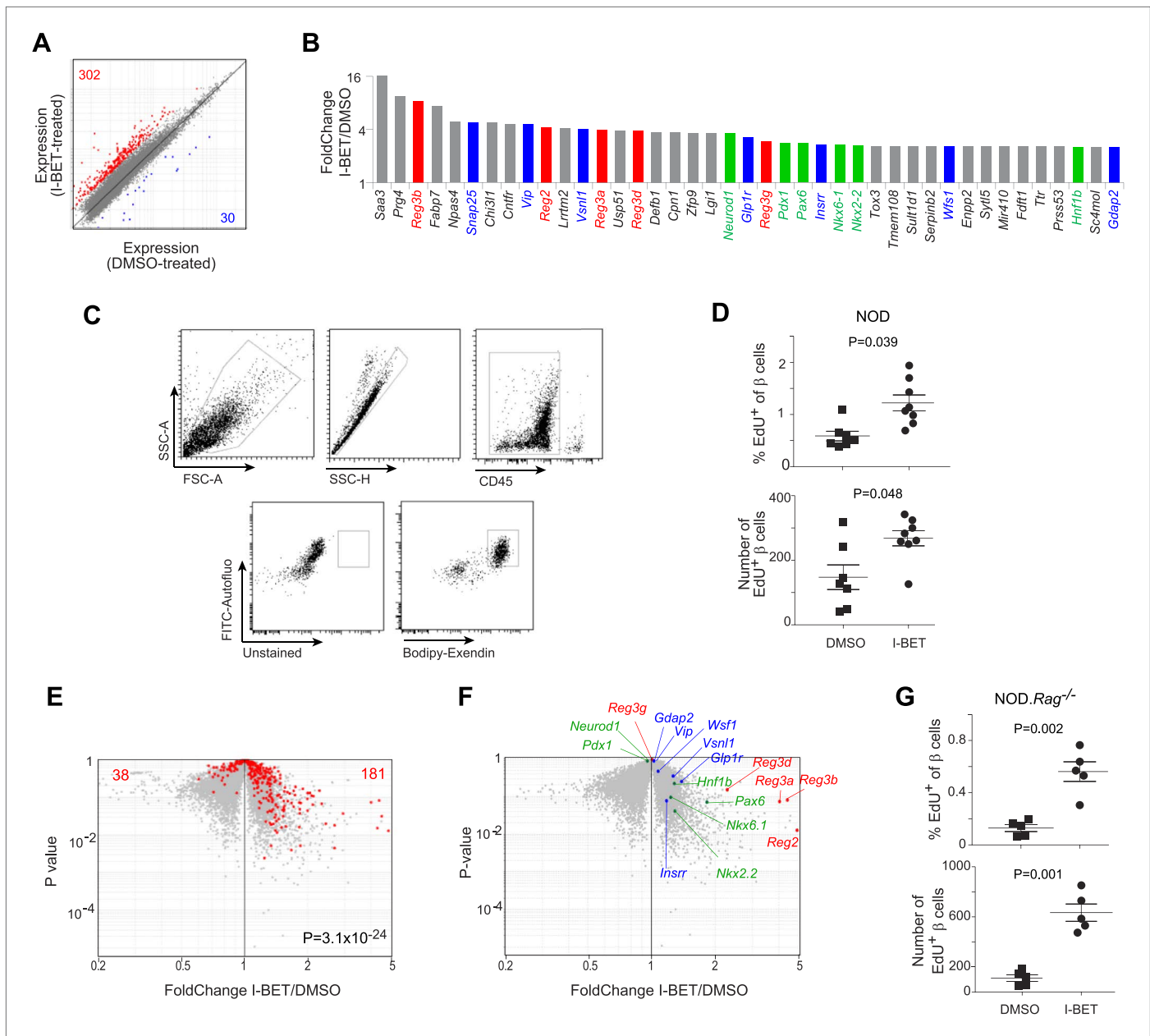


Figure 6. BET-protein inhibition promotes regeneration of islet β cells. **(A)** Pancreatic β cells were cytofluorometrically sorted from mice treated with I-BET151 or DMSO as per **Figure 1B**, and microarray-based transcriptional profiling performed. Red: transcripts increased >twofold by I-BET151; blue, transcripts >twofold decreased. **(B)** NOD β -cell transcripts increased by I-BET151 ranked by FC vis-à-vis DMSO treatment. Red, regenerating islet-derived (Reg) transcripts; green, transcripts encoding transcription factors important for β -cell differentiation and function; blue, transcripts encoding proteins that enhance insulin production. **(C, D, G)** Cytofluorometric quantification of Edu⁺ β cells from NOD **(D)** or NOD.Rag^{-/-} **(G)** mice treated with I-BET151 or DMSO as in **Figure 1B** and injected with EdU during the last 24 hr n = 5–8. Panel **C** shows the sorting strategy. **(E)** The set of red transcripts from panel **A** was superimposed on volcano plots comparing gene expression by β cells from NOD.Rag^{-/-} mice treated as in **Figure 1B** with I-BET151 vs DMSO. **(F)** Relevant I-BET151-induced transcripts highlighted in panel **B** are situated on the volcano plot of panel **E**. **(G)** p values: *<0.05; **<0.01; ***<0.001—from the Student's t test for panels **D** and **G**, and from the chi-squared test for panel **E**.

DOI: 10.7554/eLife.04631.008

The following figure supplements are available for figure 6:

Figure supplement 1. Histologic analysis of β -cell proliferation in response to I-BET151 in NOD mice.

DOI: 10.7554/eLife.04631.009

Figure supplement 2. Histologic analysis of β -cell proliferation in response to I-BET151 in NOD.Rag^{-/-} mice.

DOI: 10.7554/eLife.04631.010

We attempted to further evaluate the cell autonomy of I-BET151's effects on β cells by purifying islets from 12-week-old NOD mice and culturing them for 24 hr in the presence of inhibitor or just vehicle. No consistent differences were observed under the two culture conditions. Not surprisingly, then, a similar experiment using commercially available human islets failed to show a repeatable difference when they were cultured in the presence and absence of I-BET151. Clearly, the islet isolation/culture conditions removed or destroyed a critical factor.

Discussion

The studies presented here showed that treatment of NOD mice with the epigenetic modifier, I-BET151, for a mere 2 weeks prevented the development of NOD diabetes life-long. I-BET151 was able to inhibit impending insulinitis as well as clear existing islet infiltration. The drug had a dual mechanism of action: it induced the pancreatic MF population to adopt an anti-inflammatory phenotype, primarily via the NF- κ B pathway, and promoted β -cell proliferation (and perhaps differentiation). These findings raise a number of intriguing questions, three of which we address here.

First, why do the mechanisms uncovered in our study appear to be so different from those proposed in the only two previous reports on the effect of BET-protein inhibitors on autoimmune disease? Bandukwala et al. found that I-BET762 (a small-molecule inhibitor similar to I-BET151) altered the differentiation of Th subsets in vitro, perturbing the typical profiles of cytokine production, and reducing the neuropathology provoked by transfer of in-vitro-differentiated Th1, but not Th17, cells reactive to a peptide of myelin oligodendrocyte glycoprotein (Bandukwala et al., 2012). Unfortunately, with such transfer models, it is difficult to know how well the in vitro processes reflect in vivo events, and to distinguish subsidiary effects on cell survival and homing. Mele et al. reported that JQ1 primarily inhibited the differentiation of and cytokine production by Th17 cells, and strongly repressed collagen-induced arthritis and experimental allergic encephalomyelitis (Mele et al., 2013). However, with adjuvant-induced disease models such as these, it is difficult to discriminate influences of the drug on the unfolding of autoimmune pathology vs on whatever the adjuvant is doing. Thus, the very different dual mechanism we propose for I-BET151's impact on spontaneously developing T1D in NOD mice may reflect several factors, including (but not limited to): pathogenetic differences in induced vs spontaneous autoimmune disease models; our broader analyses of immune target cell populations; and true mechanistic differences between T1D and the other diseases. As concerns the latter, it has been argued that T1D is primarily a Th1-driven disease, with little, or even a negative regulatory, influence by Th17 cells (discussed in [Kriegel et al., 2011]).

Second, how does I-BET151's effect, focused on MFs and β cells, lead to life-long protection from T1D? MFs seem to play a schizophrenic role in the NOD disease. They were shown long ago to be an early participant in islet infiltration (Jansen et al., 1994), and to play a critical effector role in diabetes pathogenesis, attributed primarily to the production of inflammatory cytokines and other mediators, such as iNOS (Hutchings et al., 1990; Jun et al., 1999a, 1999b; Calderon et al., 2006). More recently, there has been a growing appreciation of their regulatory role in keeping diabetes in check. For example, the frequency of a small subset of pancreatic MFs expressing the complement receptor for immunoglobulin (a.k.a. CRlg) at 6–10 weeks of age determined whether or not NOD diabetes would develop months later (Fu et al., 2012b), and transfer of in-vitro-differentiated M2, but not M1, MFs protected NOD mice from disease development (Parsa et al., 2012).

One normally thinks of immunological tolerance as being the purview of T and B cells, but MFs seem to be playing the driving role in I-BET151's long-term immunologic impact on T1D. Chronic inflammation (as is the insulinitis associated with T1D) typically entails three classes of participant: myeloid cells, in particular, tissue-resident MFs; lymphoid cells, including effector and regulatory T and B cells; and tissue-target cells, that is, islet β cells in the T1D context. The 'flavor' and severity of inflammation is determined by three-way interactions amongst these cellular players. One implication of this cross-talk is that a perturbation that targets primarily one of the three compartments has the potential to rebalance the dynamic process of inflammation, resetting homeostasis to a new level either beneficial or detrimental to the individual. BET-protein inhibition skewed the phenotype of pancreatic MFs towards an anti-inflammatory phenotype, whether this be at the population level through differential influx, efflux or death, or at the level of individual cells owing to changes in transcriptional programs. The 're-educated' macrophages appeared to be more potent at inhibiting T cell proliferation. In addition, it is possible that MFs play some role in the I-BET151 influences on β -cell regeneration. The findings on Rag1-deficient mice ruled out the need for adaptive immune cells in the islet infiltrate for

I-BET151's induction of β -cell proliferation, but MFs are not thought to be compromised in this strain. Relatedly, the lack of a consistent I-BET151 effect on cultured mouse and human islets might result from a dearth of MFs under our isolation and incubation conditions (e.g., [Li et al., 2009]). Several recent publications have highlighted a role for MFs, particularly M2 cells, in promoting regeneration of β cells in diverse experimental settings (Brissova et al., 2014; Xiao et al., 2014), a function foretold by the reduced β -cell mass in MF-deficient *Csf1^{op/op}* mice reported a decade ago (Banaei-Bouchareb et al., 2004).

Whether reflecting a cell-intrinsic or -extrinsic impact of the drug, several pro-regenerative pathways appear to be enhanced in β -cells from I-BET151-treated mice. Increased β -cell proliferation could result from up-regulation of the genes encoding Neurod1 (Kojima et al., 2003), GLP-1R (De Leon et al., 2003), or various of the Reg family members (Unno et al., 2002; Liu et al., 2008), the latter perhaps a consequence of higher IL-22R expression (Hill et al., 2013) (see Figure 6B and Supplementary file 4). Protection of β -cells from apoptosis is likely to be an important outcome of inhibiting the NF- κ B pathway (Takahashi et al., 2010), but could also issue from enhanced expression of other known pro-survival factors, such as *Cntfr* (Rezende et al., 2007) and *Tox3* (Dittmer et al., 2011) (see Figures 4 and 6B). Lastly, β -cell differentiation and function should be fostered by up-regulation of genes encoding transcription factors such as Neurod1, Pdx1, Pax6, Nkx6-1 and Nkx2-2. The significant delay in re-onset of diabetes in I-BET151-treated diabetic mice suggests functionally relevant improvement in β -cell function. In brief, the striking effect of I-BET151 on T1D development in NOD mice seems to reflect the fortunate concurrence of a complex, though inter-related, set of diabetes-protective processes.

Lastly, why does a drug that inhibits BET proteins, which include general transcription factors such as Brd4, have such circumscribed effects? A 2-week I-BET151 treatment might be expected to provoke numerous side-effects, but this regimen seemed in general to be well tolerated in our studies. This conundrum has been raised in several contexts of BET-inhibitor treatment, and was recently discussed at length (Shi and Vakoc, 2014). The explanation probably relates to two features of BET-protein, in particular Brd4, biology. First: Brd4 is an important element of so-called 'super-enhancers', defined as unusually long transcriptional enhancers that host an exceptionally high density of TFs—both cell-type-specific and general factors, including RNA polymerase-II, Mediator, p300 and Brd4 (Hnisz et al., 2013). They are thought to serve as chromatin depots, collecting TFs and coordinating their delivery to transcriptional start-sites via intra-chromosome looping or inter-chromosome interactions. Super-enhancers are preferentially associated with loci that define and control the biology of particular cell-types, notably developmentally regulated and inducible genes; intriguingly, disease-associated, including T1D-associated, nucleotide polymorphisms are especially enriched in the super-enhancers of disease-relevant cell-types (Hnisz et al., 2013; Parker et al., 2013). Genes associated with super-enhancers show unusually high sensitivity to BET-protein inhibitors (Chapuy et al., 2013; Loven et al., 2013; Whyte et al., 2013). Second: although the bromodomain of Brd4 binds to acetyllysine residues on histone-4, and I-BET151 was modeled to inhibit this interaction, it is now known to bind to a few non-histone chromosomal proteins as well, notably NF- κ B, a liaison also blocked by BET-protein inhibitors (Huang et al., 2009; Zhang et al., 2012; Zou et al., 2014). Abrogating specific interactions such as these, differing according to the cellular context, might be the dominant impact of BET inhibitors, a scenario that would be consistent with the similar effects we observed with I-BET151 and BAY 11-7082 treatment. Either or both of these explanations could account for the circumscribed effect of I-BET151 on NOD diabetes. Additionally, specificity might be imparted by different BET-family members or isoforms—notably both Brd2 and Brd4 are players in MF inflammatory responses (Belkina et al., 2013). According to either of these explanations, higher doses might unleash a broader array of effects.

Viewed in the context of recent reports, our data point to NF- κ B as a direct target of I-BET151. Traditionally, Brd4's impact on transcription has been thought to reflect its binding to histone acetyllysine residues, as a so-called 'histone reader' (Muller et al., 2011; Prinjha et al., 2012). Analogously, the influence of I-BET151 (and like drugs) on Brd4 function has generally been attributed to Brd4 interactions with acetylated histones (Muller et al., 2011; Prinjha et al., 2012). However, it is now clear that I-BET 151 directly targets Brd4's association with non-histone proteins as well. The best-studied example is NF- κ B (Chen et al., 2005; Nowak et al., 2008; Huang et al., 2009; Zou et al., 2014). The two bromodomains of Brd4 cooperatively recognize RelA acetylated at the K310 position, and this interaction is blocked by drugs like I-BET151 and JQ1.

Of late, there has been substantial interest in treating individuals with, or at risk of, T1D with combination therapies. It would seem logical to design a combinatorial approach that targets two or more of the major players in disease—perhaps optimally, addressing elements of the innate immune system, adaptive immune system and islet target tissue. We have demonstrated that a single drug, the BRD blocker I-BET151, has a potent effect on T1D in pre-diabetic NOD mice by coincidentally influencing MFs and β cells. Recently, another drug from the cancer world, the HDAC inhibitor, vorinostat, was reported to inhibit T1D, by a seemingly different mechanism impacting a multiplicity of cell-types (*Christensen et al., 2014*). Thus, epigenetic modulators would seem to be exciting candidates to explore in human T1D patients.

Materials and methods

Mice and disease evaluation

NOD/Lt mice were bred under specific-pathogen-free conditions in our animal facility at the New Research Building of Harvard Medical School, cared for in accordance with the ethical guidelines of the Institutional Animal Care and Use Committee. Relevant studies were also conducted in accordance with GSK's Policy on the Care, Welfare and Treatment of Laboratory Animals. NOD.Cg-Rag1^{tm1mom} mice were maintained in our lab's colony at Jackson Laboratory.

For the evaluation of diabetes, mice were monitored until 30 weeks of age by measuring urine- and blood-glucose levels, as described (*Katz et al., 1993*). Individuals with two consecutive measurements of a serum-glucose concentration above 300 mg/dl were considered diabetic. For the recent-onset cohorts: on the same day as diabetes diagnosis, individuals received a single subcutaneously implanted insulin pellet (LinShin, Toronto, Canada), which lowers the blood-glucose level to the normal range within 2 days.

For insulinitis assessment, mice were euthanized, and their pancreas removed and fixed in 10% neutral-buffered formalin (Sigma–Aldrich, St. Louis, MO). Paraffin-embedded sections were cut into 6 μ m sections with 150 μ m between steps, and were stained with hematoxylin and eosin (H&E). Insulinitis was scored as described (*Katz et al., 1993*).

Small-molecule inhibitors

The BET-protein BRD inhibitor (I-BET151, GSK1210151A) was produced and handled as described (*Dawson et al., 2011*). For long-term in vivo treatment, mice were ip-injected with I-BET151 dissolved in DMSO at a dose of 10 mg/kg daily for 2 weeks beginning at the designated age.

The NF- κ B inhibitor (BAY 11–7082) was purchased from Sigma and dissolved in DMSO as a stock solution of 10 mg/ml. For in vivo treatment, BAY was injected ip at a dose of 10 mg/kg 24 hr before sacrificing mice for analysis.

Flow cytometry

For immunocytes, all staining began by incubating with a mAb directed against Fc γ R (2.4G2; BD Pharmingen, San Diego, CA). mAbs against the following antigens were used: CD45 (30-F11), CD4 (RM4-5), CD8 (53-6.7), CD19 (6D5), CD11b (M1/70), CD11c (G418), Ly6C (AL-21), F4/80 (BM8) and IL-17A (TC11-18H10.1), all from BioLegend (San Diego, CA); and FoxP3 (FJK-16s, eBioscience, San Diego, CA).

For β cells, we followed the method described in (*Li et al., 2009*) with modifications. Briefly, the pancreas was perfused via the common bile duct with 5 ml of a solution of collagenase P (1 mg/ml, Roche) and was then digested at 37°C for 15 min, followed by several steps of centrifugation and washing. On average, 80 islets were purified by hand-picking, and were then cultured in complete RPMI1640 medium with the fluorescent exendin-4 probe (100 nM). After 1 hr, islets were disrupted by treatment with trypsin-EDTA solution in a 37°C waterbath for 10 min. The single-cell suspensions containing β cells were analyzed by flow cytometry.

The exendin-4 probe, EP12-BTMR-X, was synthesized as previously reported (compound 17 in Table 1 of *Clardy et al., 2014*). Briefly, an azide-functionalized BODIPY TMR-X was conjugated to exendin-4 (HGEGTFTSDLSPraQMEEEEAVRLFIEWLKNKGPPSSGAPPPS) using microwave-assisted copper-catalyzed azide-alkyne Huisgen cycloaddition. The conjugate was purified by HPLC and characterized by MALDI-TOF mass spectrometry and an I¹²⁵ binding assay.

To quantify proliferation in vivo, we ip-injected mice with 1 mg EdU 24 hr before sacrifice, and single-cell suspensions were prepared, fixed and permeabilized using the eBioscience Fixation/Permeabilization set (Cat# 00-5123, 00-5223). They were then stained using the EdU staining kit (Click-iT EdU Flow Cytometry Assay Kits; Invitrogen, Carlsbad, CA), following the users' manual.

Microarray analysis

Pancreata were collected and digested for 30 min at 37°C with collagenase IV (1 mg/ml) and DNase I (10 U/ml). Single-cell suspensions were prepared and stained, and CD4⁺ or CD45⁺ cells were sorted into 500 ml TRIzol (Invitrogen) for RNA isolation. RNA was amplified in two rounds with MessageAmp aRNA (Ambion) and labeled with biotin (BioArray High Yield RNA Transcription Labeling; Enzo, Farmingdale, NY), and the resulting cRNA was hybridized to MoGene 1.0 ST (mouse) or huGene 1.0 ST (human) arrays (Affymetrix, Santa Clara, CA). Raw data were normalized by the robust multi-array average (RMA) algorithm implemented in the Expression File Creator module of the GenePattern genomic analysis platform (Reich et al., 2006). For pathway analysis, GSEA was used, as described (Subramanian et al., 2005). Gene-expression signatures of Th1, Th2 and Th17 cells derived from (Wu et al., 2010) and (Vehik and Dabelea, 2011); and signatures for Treg cells from (Fu et al., 2012a).

For microarray analysis of islet β cells, NOD or NOD.Rag^{-/-} mice were sacrificed, and collagenase P solution (0.5 mg/ml) administered intrapancreatically via the bile duct. Pancreata were then digested for 20 min at 37°C. Islets were hand-picked under a stereomicroscope and a single-cell suspension prepared by treating the isolated islets with trypsin-EDTA (Life Technology, Grand Island, NY) (Brennan et al., 2007). β cells were cytofluorometrically sorted on cell size and autofluorescence (Dirice et al., 2013). Transcript quantification and data analysis were as above.

In vitro suppression assays

TCR β^+ CD4⁺CD25⁻ naïve T cells were sorted from spleen and labeled with 10 μ mol/l CFSE (Molecular Probes) in RPMI 1640 at a concentration of 10⁶/ml at 37°C for 20 min; then were washed, resuspended in complete culture medium (RPMI1640, 10% fetal calf serum, 2 mmol/l L-glutamine, penicillin/streptomycin, and 2-mercaptoethanol), and cultured at 1 \times 10⁵ cells/well in round-bottom, 96-well plates (Corning, Corning, NY). T cells were activated with anti-CD3/CD28 beads (at a ratio of 1:1 between cells and beads [Invitrogen]) and IL-2 (20 U/ml). Pancreatic myeloid cells from I-BET151^{-/-}, or DMSO-treated mice were sorted into CD11b⁺CD11c^{low/-} or CD11b^{low/-} CD11c⁺ fractions, and were added to cultured T cells at a ratio of myeloid:T cells of 1:4. Similarly, CD4⁺CD25⁺ cells were sorted from I-BET151^{-/-}, or DMSO-treated mice, and were added to cultured T cells at a ratio of 1:2. Proliferation was measured by flow-cytometric analysis of CFSE dilution, and division indices were calculated by computing the weighted fractions of all the divisions as per (D'Alise et al., 2008).

Human monocyte-derived MFs

Blood from three healthy volunteers was used to isolate buffy coats by Ficoll–Paque density gradient centrifugation. Human monocytes were purified by positive selection of CD14-expressing cells (Miltenyi Biotec, UK). They were cultured in RPMI-1640 supplemented with 5% heat-inactivated fetal calf serum (Hyclone, ThermoScientific, UK), 2 mM Glutamine (Invitrogen, UK), 100 U/ml penicillin and 100 mg/ml streptomycin containing either 5 ng/ml GM-CSF (R&D Systems, UK) (condition 1) or 100 ng/ml M-CSF (R&D Systems, UK) (condition 2) and cultured for 5 days to generate MFs, respectively. After 5 days, MFs were treated with fresh medium containing either 0.1% DMSO or 1 μ M I-BET151 for 30 min and then stimulated with 100 ng/ml LPS (L4391, Sigma, UK), or left unstimulated. Cells were harvested at 4 hr for extracting total RNA for transcriptional profiling.

Human biological samples were sourced ethically, and their research use was in accord with the terms of the informed consents.

Immunostaining and microscopy

For visualizing β -cell proliferation, we injected EdU (1 mg) ip 24 hr before harvesting pancreata. Paraffin sections of pancreas 6 μ m in thickness were prepared. Standard procedures were used for immunostaining (Fu et al., 2012b). Before the addition of primary mAbs, sections were blocked with 5% normal donkey serum (Jackson ImmunoResearch, West Grove, PA), then incubated overnight at 4°C with anti-insulin (Linco Research, St. Charles, MO), followed by FITC-AffiniPure Donkey Anti-Guinea Pig IgG (Jackson ImmunoResearch). EdU staining was performed as above. Nuclei were stained with DAPI (4',6-diamidino-2-phenylindole dihydrochloride). Images were acquired on an Axiovert 200M confocal microscope (Zeiss, Peabody, MA) with a xenon arc lamp in a Lambda DG-4 wavelength switcher (Sutter Instrument), and were processed with Slidebook imaging software (Intelligent Imaging, Denver, CO).

Statistical analysis

Tests used for statistical analyses are described in the various figure legends (GraphPad software v5.0; Prism, La Jolla, CA). p values of 0.05 or less were considered to be statistically significant.

Acknowledgements

We thank J Mohan, A Ortiz-Lopez, N Asinovski, R Cruse, K Rothamel, J LaVecchio and G Buruzala for their experimental contributions.

Additional information

Competing interests

PM: GlaxoSmithKline has an ongoing interest in the therapeutic applications of BET-protein inhibitors. KL: GlaxoSmithKline has an ongoing interest in the therapeutic applications of BET-protein inhibitors. RKP: GlaxoSmithKline has an ongoing interest in the therapeutic applications of BET-protein inhibitors. IR, GlaxoSmithKline has an ongoing interest in the therapeutic applications of BET-protein inhibitors. DM: Reviewing editor, *eLife*. The other authors declare that no competing interests exist.

Funding

Funder	Grant reference number	Author
National Institute of Allergy and Infectious Diseases	PO1 AI054904	Christophe Benoist, Diane Mathis, Ralph Weissleder
GlaxoSmithKline	Sponsored Research Agreement	Christophe Benoist, Diane Mathis
Harvard Medical School	Schuyler Pierce Memorial Fellowship	Wenxian Fu

The funders had no role in study design, data collection and interpretation, or the decision to submit the work for publication.

Author contributions

WF, Designed the experiments, Performed experiments, Wrote the manuscript, Analyzed the data, Edited the manuscript; JF, KH, PM, IR, Performed experiments, Analyzed the data, Edited the manuscript; SMC, KL, RW, RKP, Analyzed the data, Edited the manuscript; CB, DM, Designed the experiments, Wrote the manuscript, Analyzed the data, Edited the manuscript

Ethics

Animal experimentation: NOD/Lt mice were bred under specific-pathogen-free conditions in our animal facility at the New Research Building of Harvard Medical School, cared for in accordance with the ethical guidelines of the Institutional Animal Care and Use Committee (#02954). Relevant studies were also conducted in accordance with GSK's Policy on the Care, Welfare and Treatment of Laboratory Animals. NOD.Cg-Rag1<tm1mom> mice were maintained in our lab's colony at Jackson Laboratory.

Additional files

Supplementary files

- Supplementary file 1. Genes over-represented in pancreatic CD45⁺ cells of NOD mice treated with I-BET151.
DOI: [10.7554/eLife.04631.011](https://doi.org/10.7554/eLife.04631.011)
- Supplementary file 2. Genes under-represented in pancreatic CD45⁺ cells of NOD mice treated with I-BET151.
DOI: [10.7554/eLife.04631.012](https://doi.org/10.7554/eLife.04631.012)
- Supplementary file 3. Expression of NF- κ B target genes in pancreatic CD45⁺ cells of NOD mice treated with I-BET151.
DOI: [10.7554/eLife.04631.013](https://doi.org/10.7554/eLife.04631.013)
- Supplementary file 4. Transcripts over-represented in β cells of NOD mice treated with I-BET151.
DOI: [10.7554/eLife.04631.014](https://doi.org/10.7554/eLife.04631.014)

References

- Anand P**, Brown JD, Lin CY, Qi J, Zhang R, Artero PC, Alaiti MA, Bullard J, Alazem K, Margulies KB, Cappola TP, Lemieux M, Plutzky J, Bradner JE, Haldar SM. 2013. BET bromodomains mediate transcriptional pause release in heart failure. *Cell* **154**:569–582. doi: [10.1016/j.cell.2013.07.013](https://doi.org/10.1016/j.cell.2013.07.013).
- Anderson MS**, Bluestone JA. 2005. The NOD mouse: a model of immune dysregulation. *Annual Review of Immunology* **23**:447–485. doi: [10.1146/annurev.immunol.23.021704.115643](https://doi.org/10.1146/annurev.immunol.23.021704.115643).
- Banaei-Bouchareb L**, Gouon-Evans V, Samara-Boustani D, Castellotti MC, Czernichow P, Pollard JW, Polak M. 2004. Insulin cell mass is altered in Csf1op/Csf1op macrophage-deficient mice. *Journal of Leukocyte Biology* **76**:359–367. doi: [10.1189/jlb.1103591](https://doi.org/10.1189/jlb.1103591).
- Bandukwala HS**, Gagnon J, Togher S, Greenbaum JA, Lamperti ED, Parr NJ, Molesworth AM, Smithers N, Lee K, Witherington J, Tough DF, Prinjha RK, Peters B, Rao A. 2012. Selective inhibition of CD4+ T-cell cytokine production and autoimmunity by BET protein and c-Myc inhibitors. *Proceedings of the National Academy of Sciences of USA* **109**:14532–14537. doi: [10.1073/pnas.1212264109](https://doi.org/10.1073/pnas.1212264109).
- Belkina AC**, Nikolajczyk BS, Denis GV. 2013. BET protein function is required for inflammation: Brd2 genetic disruption and BET inhibitor JQ1 impair mouse macrophage inflammatory responses. *The Journal of Immunology* **190**:3670–3678. doi: [10.4049/jimmunol.1202838](https://doi.org/10.4049/jimmunol.1202838).
- Bensinger SJ**, Tontonoz P. 2008. Integration of metabolism and inflammation by lipid-activated nuclear receptors. *Nature* **454**:470–477. doi: [10.1038/nature07202](https://doi.org/10.1038/nature07202).
- Bluestone JA**, Herold K, Eisenbarth G. 2010. Genetics, pathogenesis and clinical interventions in type 1 diabetes. *Nature* **464**:1293–1300. doi: [10.1038/nature08933](https://doi.org/10.1038/nature08933).
- Brennan K**, Huangfu D, Melton D. 2007. All beta cells contribute equally to islet growth and maintenance. *PLOS Biology* **5**:e163. doi: [10.1371/journal.pbio.0050163](https://doi.org/10.1371/journal.pbio.0050163).
- Brissova M**, Aamodt K, Brahmachary P, Prasad N, Hong JY, Dai C, Mellati M, Shostak A, Poffenberger G, Aramandla R, Levy SE, Powers AC. 2014. Islet microenvironment, modulated by vascular endothelial growth factor-A signaling, promotes beta cell regeneration. *Cell Metabolism* **19**:498–511. doi: [10.1016/j.cmet.2014.02.001](https://doi.org/10.1016/j.cmet.2014.02.001).
- Calderon B**, Suri A, Unanue ER. 2006. In CD4+ T-cell-induced diabetes, macrophages are the final effector cells that mediate islet beta-cell killing: studies from an acute model. *The American Journal of Pathology* **169**:2137–2147. doi: [10.2353/ajpath.2006.060539](https://doi.org/10.2353/ajpath.2006.060539).
- Cardozo AK**, Heimberg H, Heremans Y, Leeman R, Kutlu B, Kruhøffer M, Ørntoft T, Eizirik DL. 2001. A comprehensive analysis of cytokine-induced and nuclear factor-kappa B-dependent genes in primary rat pancreatic beta-cells. *The Journal of Biological Chemistry* **276**:48879–48886. doi: [10.1074/jbc.M108658200](https://doi.org/10.1074/jbc.M108658200).
- Chapuy B**, McKeown MR, Lin CY, Monti S, Roemer MG, Qi J, Rahl PB, Sun HH, Yeda KT, Doench JG, Reichert E, Kung AL, Rodig SJ, Young RA, Shipp MA, Bradner JE. 2013. Discovery and characterization of super-enhancer-associated dependencies in diffuse large B cell lymphoma. *Cancer Cell* **24**:777–790. doi: [10.1016/j.ccr.2013.11.003](https://doi.org/10.1016/j.ccr.2013.11.003).
- Chen LF**, Williams SA, Mu Y, Nakano H, Duerr JM, Buckbinder L, Greene WC. 2005. NF-kappaB RelA phosphorylation regulates RelA acetylation. *Molecular and Cellular Biology* **25**:7966–7975. doi: [10.1128/MCB.25.18.7966-7975.2005](https://doi.org/10.1128/MCB.25.18.7966-7975.2005).
- Christensen DP**, Gysemans C, Lundh M, Dahllof MS, Noesgaard D, Schmidt SF, Mandrup S, Birkbak N, Workman CT, Piemonti L, Blaabjerg L, Monzani V, Fossati G, Mascagni P, Paraskevas S, Aikin RA, Billestrup N, Grunnet LG, Dinarello CA, Mathieu C, Mandrup-Poulsen T. 2014. Lysine deacetylase inhibition prevents diabetes by chromatin-independent immunoregulation and beta-cell protection. *Proceedings of the National Academy of Sciences of USA* **111**:1055–1059. doi: [10.1073/pnas.1320850111](https://doi.org/10.1073/pnas.1320850111).
- Clardy SM**, Keliher EJ, Mohan JF, Sebas M, Benoist C, Mathis D, Weissleder R. 2014. Fluorescent exendin-4 derivatives for pancreatic beta-cell analysis. *Bioconjugate Chemistry* **25**:171–177. doi: [10.1021/bc4005014](https://doi.org/10.1021/bc4005014).
- Cnop M**, Welsh N, Jonas JC, Jörns A, Lenzen S, Eizirik DL. 2005. Mechanisms of pancreatic beta-cell death in type 1 and type 2 diabetes: many differences, few similarities. *Diabetes* **54**(Suppl 2):S97–S107. doi: [10.2337/diabetes.54.suppl_2.S97](https://doi.org/10.2337/diabetes.54.suppl_2.S97).
- D'Alise AM**, Auyeung V, Feuerer M, Nishio J, Fontenot J, Benoist C, Mathis D. 2008. The defect in T-cell regulation in NOD mice is an effect on the T-cell effectors. *Proceedings of the National Academy of Sciences of USA* **105**:19857–19862. doi: [10.1073/pnas.0810713105](https://doi.org/10.1073/pnas.0810713105).
- Dai FF**, Zhang Y, Kang Y, Wang Q, Gaisano HY, Braunewell KH, Chan CB, Wheeler MB. 2006. The neuronal Ca2+ sensor protein visinin-like protein-1 is expressed in pancreatic islets and regulates insulin secretion. *The Journal of Biological Chemistry* **281**:21942–21953. doi: [10.1074/jbc.M512924200](https://doi.org/10.1074/jbc.M512924200).
- Dawson MA**, Kouzarides T. 2012. Cancer epigenetics: from mechanism to therapy. *Cell* **150**:12–27. doi: [10.1016/j.cell.2012.06.013](https://doi.org/10.1016/j.cell.2012.06.013).
- Dawson MA**, Prinjha RK, Dittmann A, Giotopoulos G, Bantscheff M, Chan WI, Robson SC, Chung CW, Hopf C, Savitski MM, Huthmacher C, Gudgin E, Lugo D, Beinke S, Chapman TD, Roberts EJ, Soden PE, Auger KR, Mirguet O, Doehner K, Delwel R, Burnett AK, Jeffrey P, Drewes G, Lee K, Huntly BJ, Kouzarides T. 2011. Inhibition of BET recruitment to chromatin as an effective treatment for MLL-fusion leukaemia. *Nature* **478**:529–533. doi: [10.1038/nature10509](https://doi.org/10.1038/nature10509).
- De León DD**, Deng S, Madani R, Ahima RS, Drucker DJ, Stoffers DA. 2003. Role of endogenous glucagon-like peptide-1 in islet regeneration after partial pancreatectomy. *Diabetes* **52**:365–371. doi: [10.2337/diabetes.52.2.365](https://doi.org/10.2337/diabetes.52.2.365).
- Delmore JE**, Issa GC, Lemieux ME, Rahl PB, Shi J, Jacobs HM, Kastriitis E, Gilpatrick T, Paranal RM, Qi J, Chesi M, Schinzel AC, McKeown MR, Heffernan TP, Vakoc CR, Bergsagel PL, Ghobrial IM, Richardson PG, Young RA, Hahn WC, Anderson KC, Kung AL, Bradner JE, Mitsiades CS. 2011. BET bromodomain inhibition as a therapeutic strategy to target c-Myc. *Cell* **146**:904–917. doi: [10.1016/j.cell.2011.08.017](https://doi.org/10.1016/j.cell.2011.08.017).

- Dirice E**, Kahraman S, Jiang W, El OA, De Jesus DF, Teo AK, Hu J, Kawamori D, Gaglia JL, Mathis D, Kulkarni RN. 2013. Soluble factors secreted by T-cells promote beta-cell proliferation. *Diabetes* **63**:188–202. doi: [10.2337/db13-0204](https://doi.org/10.2337/db13-0204).
- Dittmer S**, Kovacs Z, Yuan SH, Sisler G, Kögl M, Summer H, Geerts A, Golz S, Shioda T, Methner A. 2011. TOX3 is a neuronal survival factor that induces transcription depending on the presence of CITED1 or phosphorylated CREB in the transcriptionally active complex. *Journal of Cell Science* **124**:252–260. doi: [10.1242/jcs.068759](https://doi.org/10.1242/jcs.068759).
- Eldor R**, Yeffet A, Baum K, Doviner V, Amar D, Ben-Neriah Y, Christofori G, Peled A, Carel JC, Boitard C, Klein T, Serup P, Eizirik DL, Melloul D. 2006. Conditional and specific NF-kappaB blockade protects pancreatic beta cells from diabetogenic agents. *Proceedings of the National Academy of Sciences of USA* **103**:5072–5077. doi: [10.1073/pnas.0508166103](https://doi.org/10.1073/pnas.0508166103).
- Filippakopoulos P**, Qi J, Picaud S, Shen Y, Smith WB, Fedorov O, Morse EM, Keates T, Hickman TT, Felletar I, Philpott M, Munro S, McKeown MR, Wang Y, Christie AL, West N, Cameron MJ, Schwartz B, Heightman TD, La Thangue N, French CA, Wiest O, Kung AL, Knapp S, Bradner JE. 2010. Selective inhibition of BET bromodomains. *Nature* **468**:1067–1073. doi: [10.1038/nature09504](https://doi.org/10.1038/nature09504).
- Fu W**, Ergun A, Lu T, Hill JA, Haxhinasto S, Fassett MS, Gazit R, Adoro S, Glimcher L, Chan S, Kastner P, Rossi D, Collins JJ, Mathis D, Benoist C. 2012a. A multiply redundant genetic switch 'locks in' the transcriptional signature of regulatory T cells. *Nature Immunology* **13**:972–980. doi: [10.1038/ni.2420](https://doi.org/10.1038/ni.2420).
- Fu W**, Wojtkiewicz G, Weissleder R, Benoist C, Mathis D. 2012b. Early window of diabetes determinism in NOD mice, dependent on the complement receptor CR1g, identified by noninvasive imaging. *Nature Immunology* **13**:361–368. doi: [10.1038/ni.2233](https://doi.org/10.1038/ni.2233).
- Gautier EL**, Shay T, Miller J, Greter M, Jakubzick C, Ivanov S, Helft J, Chow A, Elpek KG, Gordonov S, Mazloom AR, Ma'ayan A, Chua WJ, Hansen TH, Turley SJ, Merad M, Randolph GJ, Immunological Genome Consortium. 2012. Gene-expression profiles and transcriptional regulatory pathways that underlie the identity and diversity of mouse tissue macrophages. *Nature Immunology* **13**:1118–1128. doi: [10.1038/ni.2419](https://doi.org/10.1038/ni.2419).
- Gilmore TD**. 2006. Introduction to NF-kappaB: players, pathways, perspectives. *Oncogene* **25**:6680–6684. doi: [10.1038/sj.onc.1209954](https://doi.org/10.1038/sj.onc.1209954).
- Hargreaves DC**, Horng T, Medzhitov R. 2009. Control of inducible gene expression by signal-dependent transcriptional elongation. *Cell* **138**:129–145. doi: [10.1016/j.cell.2009.05.047](https://doi.org/10.1016/j.cell.2009.05.047).
- Hill T**, Krougly O, Nikkoopour E, Bellmore S, Lee-Chan E, Fouser LA, Hill DJ, Singh B. 2013. The involvement of interleukin-22 in the expression of pancreatic beta cell regenerative *Reg* genes. *Cell Regen* **2**:2. doi: [10.1186/2045-9769-2-2](https://doi.org/10.1186/2045-9769-2-2).
- Hirayama I**, Tamemoto H, Yokota H, Kubo SK, Wang J, Kuwano H, Wang J, Kuwano H, Nagamachi Y, Takeuchi T, Izumi T. 1999. Insulin receptor-related receptor is expressed in pancreatic beta-cells and stimulates tyrosine phosphorylation of insulin receptor substrate-1 and -2. *Diabetes* **48**:1237–1244. doi: [10.2337/diabetes.48.6.1237](https://doi.org/10.2337/diabetes.48.6.1237).
- Hnisz D**, Abraham BJ, Lee TI, Lau A, Saint-Andre V, Sigova AA, Hoke HA, Young RA. 2013. Super-enhancers in the control of cell identity and disease. *Cell* **155**:934–947. doi: [10.1016/j.cell.2013.09.053](https://doi.org/10.1016/j.cell.2013.09.053).
- Huang B**, Yang XD, Zhou MM, Ozato K, Chen LF. 2009. Brd4 coactivates transcriptional activation of NF-kappaB via specific binding to acetylated RelA. *Molecular and Cellular Biology* **29**:1375–1387. doi: [10.1128/MCB.01365-08](https://doi.org/10.1128/MCB.01365-08).
- Huszarik K**, Wright B, Keller C, Nikoopour E, Krougly O, Lee-Chan E, Qin HY, Cameron MJ, Gurr WK, Hill DJ, Sherwin RS, Kelvin DJ, Singh B. 2010. Adjuvant immunotherapy increases beta cell regenerative factor *Reg2* in the pancreas of diabetic mice. *The Journal of Immunology* **185**:5120–5129. doi: [10.4049/jimmunol.1001596](https://doi.org/10.4049/jimmunol.1001596).
- Hutchings P**, Rosen H, O'Reilly L, Simpson E, Gordon S, Cooke A. 1990. Transfer of diabetes in mice prevented by blockade of adhesion-promoting receptor on macrophages. *Nature* **348**:639–641. doi: [10.1038/348639a0](https://doi.org/10.1038/348639a0).
- Jang MK**, Mochizuki K, Zhou M, Jeong HS, Brady JN, Ozato K. 2005. The bromodomain protein Brd4 is a positive regulatory component of P-TEFb and stimulates RNA polymerase II-dependent transcription. *Molecular Cell* **19**:523–534. doi: [10.1016/j.molcel.2005.06.027](https://doi.org/10.1016/j.molcel.2005.06.027).
- Jansen A**, Homo-Delarche F, Hooijkaas H, Leenen PJ, Dardenne M, Drexhage HA. 1994. Immunohistochemical characterization of monocytes-macrophages and dendritic cells involved in the initiation of the insulinitis and beta-cell destruction in NOD mice. *Diabetes* **43**:667–675. doi: [10.2337/diab.43.5.667](https://doi.org/10.2337/diab.43.5.667).
- Jun HS**, Santamaria P, Lim HW, Zhang ML, Yoon JW. 1999a. Absolute requirement of macrophages for the development and activation of beta-cell cytotoxic CD8+ T-cells in T-cell receptor transgenic NOD mice. *Diabetes* **48**:34–42. doi: [10.2337/diabetes.48.1.34](https://doi.org/10.2337/diabetes.48.1.34).
- Jun HS**, Yoon CS, Zbytniuk L, van Rooijen N, Yoon JW. 1999b. The role of macrophages in T cell-mediated autoimmune diabetes in nonobese diabetic mice. *The Journal of Experimental Medicine* **189**:347–358. doi: [10.1084/jem.189.2.347](https://doi.org/10.1084/jem.189.2.347).
- Katz JD**, Wang B, Haskins K, Benoist C, Mathis D. 1993. Following a diabetogenic T cell from genesis through pathogenesis. *Cell* **74**:1089–1100. doi: [10.1016/0092-8674\(93\)90730-E](https://doi.org/10.1016/0092-8674(93)90730-E).
- Kojima H**, Fujimiya M, Matsumura K, Younan P, Imaeda H, Maeda M, Chan L. 2003. NeuroD-beta-cellululin gene therapy induces islet neogenesis in the liver and reverses diabetes in mice. *Nature Medicine* **9**:596–603. doi: [10.1038/nm867](https://doi.org/10.1038/nm867).
- Kouzarides T**. 2000. Acetylation: a regulatory modification to rival phosphorylation? *The EMBO Journal* **19**:1176–1179. doi: [10.1093/emboj/19.6.1176](https://doi.org/10.1093/emboj/19.6.1176).
- Kriegel MA**, Sefik E, Hill JA, Wu HJ, Benoist C, Mathis D. 2011. Naturally transmitted segmented filamentous bacteria segregate with diabetes protection in nonobese diabetic mice. *Proceedings of the National Academy of Sciences of USA* **108**:11548–11553. doi: [10.1073/pnas.1108924108](https://doi.org/10.1073/pnas.1108924108).

- Li DS, Yuan YH, Tu HJ, Liang QL, Dai LJ. 2009. A protocol for islet isolation from mouse pancreas. *Nature Protocols* **4**:1649–1652. doi: [10.1038/nprot.2009.150](https://doi.org/10.1038/nprot.2009.150).
- Liu JL, Cui W, Li B, Lu Y. 2008. Possible roles of reg family proteins in pancreatic islet cell growth. *Endocrine, Metabolic & Immune Disorders Drug Targets* **8**:1–10. doi: [10.2174/187153008783928361](https://doi.org/10.2174/187153008783928361).
- Lockwood WW, Zejnullahu K, Bradner JE, Varmus H. 2012. Sensitivity of human lung adenocarcinoma cell lines to targeted inhibition of BET epigenetic signaling proteins. *Proceedings of the National Academy of Sciences of USA* **109**:19408–19413. doi: [10.1073/pnas.1216363109](https://doi.org/10.1073/pnas.1216363109).
- Lone AM, Taskén K. 2013. Proinflammatory and immunoregulatory roles of eicosanoids in T cells. *Frontiers in Immunology* **4**:130. doi: [10.3389/fimmu.2013.00130](https://doi.org/10.3389/fimmu.2013.00130).
- Loven J, Hoke HA, Lin CY, Lau A, Orlando DA, Vakoc CR, Bradner JE, Lee TI, Young RA. 2013. Selective inhibition of tumor oncogenes by disruption of super-enhancers. *Cell* **153**:320–334. doi: [10.1016/j.cell.2013.03.036](https://doi.org/10.1016/j.cell.2013.03.036).
- Mele DA, Salmeron A, Ghosh S, Huang HR, Bryant BM, Lora JM. 2013. BET bromodomain inhibition suppresses TH17-mediated pathology. *The Journal of Experimental Medicine* **210**:2181–2190. doi: [10.1084/jem.20130376](https://doi.org/10.1084/jem.20130376).
- Mertz JA, Conery AR, Bryant BM, Sandy P, Balasubramanian S, Mele DA, Bergeron L, Sims RJ III. 2011. Targeting MYC dependence in cancer by inhibiting BET bromodomains. *Proceedings of the National Academy of Sciences of USA* **108**:16669–16674. doi: [10.1073/pnas.1108190108](https://doi.org/10.1073/pnas.1108190108).
- Muller S, Filippakopoulos P, Knapp S. 2011. Bromodomains as therapeutic targets. *Expert Reviews in Molecular Medicine* **13**:e29. doi: [10.1017/S1462399411001992](https://doi.org/10.1017/S1462399411001992).
- Nicodeme E, Jeffrey KL, Schaefer U, Beinke S, Dewell S, Chung CW, Chandwani R, Marazzi I, Wilson P, Coste H, White J, Kirilovsky J, Rice CM, Lora JM, Prinjha RK, Lee K, Tarakhovsky A. 2010. Suppression of inflammation by a synthetic histone mimic. *Nature* **468**:1119–1123. doi: [10.1038/nature09589](https://doi.org/10.1038/nature09589).
- Nowak DE, Tian B, Jamaluddin M, Boldogh I, Vergara LA, Choudhary S, Brasier AR. 2008. RelA Ser276 phosphorylation is required for activation of a subset of NF- κ B-dependent genes by recruiting cyclin-dependent kinase 9/cyclin T1 complexes. *Molecular and Cellular Biology* **28**:3623–3638. doi: [10.1128/MCB.01152-07](https://doi.org/10.1128/MCB.01152-07).
- Pagliuca FW, Melton DA. 2013. How to make a functional beta-cell. *Development* **140**:2472–2483. doi: [10.1242/dev.093187](https://doi.org/10.1242/dev.093187).
- Parker SC, Stitzel ML, Taylor DL, Orozco JM, Erdos MR, Akiyama JA, van Bueren KL, Chines PS, Narisu N, NISC Comparative Sequencing Program, Black BL, Visel A, Pennacchio LA, Collins FS, National Institutes of Health Intramural Sequencing Center Comparative Sequencing Program Authors, NISC Comparative Sequencing Program Authors. 2013. Chromatin stretch enhancer states drive cell-specific gene regulation and harbor human disease risk variants. *Proceedings of the National Academy of Sciences of USA* **110**:17921–17926. doi: [10.1073/pnas.1317023110](https://doi.org/10.1073/pnas.1317023110).
- Parsa R, Andresen P, Gillett A, Mia S, Zhang XM, Mayans S, Holmberg D, Harris RA. 2012. Adoptive transfer of immunomodulatory M2 macrophages prevents type 1 diabetes in NOD mice. *Diabetes* **61**:2881–2892. doi: [10.2337/db11-1635](https://doi.org/10.2337/db11-1635).
- Patel MC, Debrosse M, Smith M, Dey A, Huynh W, Sarai N, Heightman TD, Tamura T, Ozato K. 2013. BRD4 coordinates recruitment of pause release factor P-TEFb and the pausing complex NELF/DSIF to regulate transcription elongation of interferon-stimulated genes. *Molecular and Cellular Biology* **33**:2497–2507. doi: [10.1128/MCB.01180-12](https://doi.org/10.1128/MCB.01180-12).
- Prinjha RK, Witherington J, Lee K. 2012. Place your BETs: the therapeutic potential of bromodomains. *Trends in Pharmacological Sciences* **33**:146–153. doi: [10.1016/j.tips.2011.12.002](https://doi.org/10.1016/j.tips.2011.12.002).
- Ramirez-Carrozzi VR, Braas D, Bhatt DM, Cheng CS, Hong C, Doty KR, Black JC, Hoffmann A, Carey M, Smale ST. 2009. A unifying model for the selective regulation of inducible transcription by CpG islands and nucleosome remodeling. *Cell* **138**:114–128. doi: [10.1016/j.cell.2009.04.020](https://doi.org/10.1016/j.cell.2009.04.020).
- Reich M, Liefeld T, Gould J, Lerner J, Tamayo P, Mesirov JP. 2006. GenePattern 2.0. *Nature Genetics* **38**:500–501. doi: [10.1038/ng0506-500](https://doi.org/10.1038/ng0506-500).
- Rezende LF, Stoppiglia LF, Souza KL, Negro A, Langone F, Boschero AC. 2007. Ciliary neurotrophic factor promotes survival of neonatal rat islets via the BCL-2 anti-apoptotic pathway. *The Journal of Endocrinology* **195**:157–165. doi: [10.1677/JOE-07-0016](https://doi.org/10.1677/JOE-07-0016).
- Ricklin D, Hajishengallis G, Yang K, Lambris JD. 2010. Complement: a key system for immune surveillance and homeostasis. *Nature Immunology* **11**:785–797. doi: [10.1038/ni.1923](https://doi.org/10.1038/ni.1923).
- Rink JS, Chen X, Zhang X, Kaufman DB. 2012. Conditional and specific inhibition of NF- κ B in mouse pancreatic beta cells prevents cytokine-induced deleterious effects and improves islet survival posttransplant. *Surgery* **151**:330–339. doi: [10.1016/j.surg.2011.07.011](https://doi.org/10.1016/j.surg.2011.07.011).
- Schaefer CF, Anthony K, Krupa S, Buchhoff J, Day M, Hannay T, Buetow KH. 2009. PID: the Pathway Interaction Database. *Nucleic Acids Research* **37**:D674–D679. doi: [10.1093/nar/gkn653](https://doi.org/10.1093/nar/gkn653).
- Seal J, Lamotte Y, Donche F, Bouillot A, Mirguet O, Gellibert F, Nicodeme E, Krysa G, Kirilovsky J, Beinke S, McCleary S, Rioja I, Bamborough P, Chung CW, Gordon L, Lewis T, Walker AL, Cutler L, Lugo D, Wilson DM, Witherington J, Lee K, Prinjha RK. 2012. Identification of a novel series of BET family bromodomain inhibitors: binding mode and profile of I-BET151 (GSK1210151A). *Bioorganic & Medicinal Chemistry Letters* **22**:2968–2972. doi: [10.1016/j.bmcl.2012.02.041](https://doi.org/10.1016/j.bmcl.2012.02.041).
- Serhan CN. 2011. The resolution of inflammation: the devil in the flask and in the details. *FASEB Journal* **25**:1441–1448. doi: [10.1096/fj.11-0502ufm](https://doi.org/10.1096/fj.11-0502ufm).
- Sherry NA, Kushner JA, Glandt M, Kitamura T, Brillantes AM, Herold KC. 2006. Effects of autoimmunity and immune therapy on beta-cell turnover in type 1 diabetes. *Diabetes* **55**:3238–3245. doi: [10.2337/db05-1034](https://doi.org/10.2337/db05-1034).
- Shi J, Vakoc CR. 2014. The mechanisms behind the therapeutic activity of BET bromodomain inhibition. *Molecular Cell* **54**:728–736. doi: [10.1016/j.molcel.2014.05.016](https://doi.org/10.1016/j.molcel.2014.05.016).

- Shih HP**, Wang A, Sander M. 2013. Pancreas organogenesis: from lineage determination to morphogenesis. *Annual Review of Cell and Developmental Biology* **29**:81–105. doi: [10.1146/annurev-cellbio-101512-122405](https://doi.org/10.1146/annurev-cellbio-101512-122405).
- Sreenan S**, Pick AJ, Levisetti M, Baldwin AC, Pugh W, Polonsky KS. 1999. Increased beta-cell proliferation and reduced mass before diabetes onset in the nonobese diabetic mouse. *Diabetes* **48**:989–996. doi: [10.2337/diabetes.48.5.989](https://doi.org/10.2337/diabetes.48.5.989).
- Subramanian A**, Tamayo P, Mootha VK, Mukherjee S, Ebert BL, Gillette MA, Paulovich A, Pomeroy SL, Golub TR, Lander ES, Mesirov JP. 2005. Gene set enrichment analysis: a knowledge-based approach for interpreting genome-wide expression profiles. *Proceedings of the National Academy of Sciences of USA* **102**:15545–15550. doi: [10.1073/pnas.0506580102](https://doi.org/10.1073/pnas.0506580102).
- Takahashi T**, Matsumoto S, Matsushita M, Kamachi H, Tsuruga Y, Kasai H, Watanabe M, Ozaki M, Furukawa H, Umezawa K, Todo S. 2010. Donor pretreatment with DHMEQ improves islet transplantation. *The Journal of Surgical Research* **163**:e23–e34. doi: [10.1016/j.jss.2010.04.044](https://doi.org/10.1016/j.jss.2010.04.044).
- Unno M**, Itoh T, Watanabe T, Miyashita H, Moriizumi S, Teraoka H, Yonekura H, Okamoto H. 1992. Islet beta-cell regeneration and reg genes. *Advances in Experimental Medicine and Biology* **321**:61–66. doi: [10.1007/978-1-4615-3448-8_8](https://doi.org/10.1007/978-1-4615-3448-8_8).
- Unno M**, Nata K, Noguchi N, Narushima Y, Akiyama T, Ikeda T, Nakagawa K, Takasawa S, Okamoto H. 2002. Production and characterization of Reg knockout mice: reduced proliferation of pancreatic beta-cells in Reg knockout mice. *Diabetes* **51**(Suppl 3):S478–S483. doi: [10.2337/diabetes.51.2007.S478](https://doi.org/10.2337/diabetes.51.2007.S478).
- Vallabhapurapu S**, Karin M. 2009. Regulation and function of NF-kappaB transcription factors in the immune system. *Annual Review of Immunology* **27**:693–733. doi: [10.1146/annurev.immunol.021908.132641](https://doi.org/10.1146/annurev.immunol.021908.132641).
- Vehik K**, Dabelea D. 2011. The changing epidemiology of type 1 diabetes: why is it going through the roof? *Diabetes/Metabolism Research and Reviews* **27**:3–13. doi: [10.1002/dmrr.1141](https://doi.org/10.1002/dmrr.1141).
- Whyte WA**, Orlando DA, Hnisz D, Abraham BJ, Lin CY, Kagey MH, Rahl PB, Lee TI, Young RA. 2013. Master transcription factors and mediator establish super-enhancers at key cell identity genes. *Cell* **153**:307–319. doi: [10.1016/j.cell.2013.03.035](https://doi.org/10.1016/j.cell.2013.03.035).
- Winzell MS**, Ahren B. 2007. Role of VIP and PACAP in islet function. *Peptides* **28**:1805–1813. doi: [10.1016/j.peptides.2007.04.024](https://doi.org/10.1016/j.peptides.2007.04.024).
- Wu HJ**, Ivanov II, Darce J, Hattori K, Shima T, Umetsu Y, Littman DR, Benoist C, Mathis D. 2010. Gut-residing segmented filamentous bacteria drive autoimmune arthritis via T helper 17 cells. *Immunity* **32**:815–827. doi: [10.1016/j.immuni.2010.06.001](https://doi.org/10.1016/j.immuni.2010.06.001).
- Xiao X**, Gaffar I, Guo P, Wiersch J, Fischbach S, Peirish L, Song Z, El-Gohary Y, Prasad K, Shiota C, Gittes GK. 2014. M2 macrophages promote beta-cell proliferation by up-regulation of SMAD7. *Proceedings of the National Academy of Sciences of USA* **111**:E1211–E1220. doi: [10.1073/pnas.1321347111](https://doi.org/10.1073/pnas.1321347111).
- Zhang G**, Liu R, Zhong Y, Plotnikov AN, Zhang W, Zeng L, Rusinova E, Gerona-Nevarro G, Moshkina N, Joshua J, Chuang PY, Ohlmeyer M, He JC, Zhou MM. 2012. Down-regulation of NF-kappaB transcriptional activity in HIV-associated kidney disease by BRD4 inhibition. *The Journal of Biological Chemistry* **287**:28840–28851. doi: [10.1074/jbc.M112.359505](https://doi.org/10.1074/jbc.M112.359505).
- Zhao R**, Nakamura T, Fu Y, Lazar Z, Spector DL. 2011. Gene bookmarking accelerates the kinetics of post-mitotic transcriptional re-activation. *Nature Cell Biology* **13**:1295–1304. doi: [10.1038/ncb2341](https://doi.org/10.1038/ncb2341).
- Zou Z**, Huang B, Wu X, Zhang H, Qi J, Bradner J, Nair S, Chen LF. 2014. Brd4 maintains constitutively active NF-kappaB in cancer cells by binding to acetylated RelA. *Oncogene* **33**:2395–2404. doi: [10.1038/onc.2013.179](https://doi.org/10.1038/onc.2013.179).
- Zuber J**, Shi J, Wang E, Rappaport AR, Herrmann H, Sison EA, Magoon D, Qi J, Blatt K, Wunderlich M, Taylor MJ, Johns C, Chicas A, Mulloy JC, Kogan SC, Brown P, Valent P, Bradner JE, Lowe SW, Vakoc CR. 2011. RNAi screen identifies Brd4 as a therapeutic target in acute myeloid leukaemia. *Nature* **478**:524–528. doi: [10.1038/nature10334](https://doi.org/10.1038/nature10334).