



DIGITAL ACCESS TO SCHOLARSHIP AT HARVARD

MHC-I expression renders catecholaminergic neurons susceptible to T-cell-mediated degeneration

The Harvard community has made this article openly available.
[Please share](#) how this access benefits you. Your story matters.

Citation	Cebrián, C., F. A. Zucca, P. Mauri, J. A. Steinbeck, L. Studer, C. R. Scherzer, E. Kanter, et al. 2014. "MHC-I expression renders catecholaminergic neurons susceptible to T-cell-mediated degeneration." Nature communications 5 (1): 3633. doi:10.1038/ncomms4633. http://dx.doi.org/10.1038/ncomms4633 .
Published Version	doi:10.1038/ncomms4633
Accessed	February 17, 2015 3:55:59 AM EST
Citable Link	http://nrs.harvard.edu/urn-3:HUL.InstRepos:13347601
Terms of Use	This article was downloaded from Harvard University's DASH repository, and is made available under the terms and conditions applicable to Other Posted Material, as set forth at http://nrs.harvard.edu/urn-3:HUL.InstRepos:dash.current.terms-of-use#LAA

(Article begins on next page)



Published in final edited form as:

Nat Commun. ; 5: 3633. doi:10.1038/ncomms4633.

MHC-I expression renders catecholaminergic neurons susceptible to T-cell-mediated degeneration

Carolina Cebrián¹, Fabio A. Zucca², Pierluigi Mauri², Julius A. Steinbeck³, Lorenz Studer³, Clemens R. Scherzer⁴, Ellen Kanter¹, Sadna Budhu⁵, Jonathan Mandelbaum¹, Jean P. Vonsattel⁶, Luigi Zecca³, John D. Loike⁷, and David Sulzer^{1,8,9,*}

¹Department of Neurology, Columbia University Medical Center, New York, NY 10032 USA

²Institute of Biomedical Technologies, National Research Council of Italy, 20090 Segrate, Milano, ITALY

³Center for Stem Cell Biology, Sloan-Kettering Institute, 10065, New York, New York, USA

⁴The Neurogenomics Laboratory, Harvard Medical School and Brigham and Women's Hospital, Cambridge, MA 02139

⁵Sloan Kettering Memorial Hospital, New York, NY

⁶New York Brain Bank, Columbia University Medical Center, New York, NY 10032 USA

⁷Department of Physiology and Cellular Biophysics, Columbia University Medical Center, New York, NY 10032 USA

⁸Department of Psychiatry, Columbia University Medical Center, New York, NY 10032 USA

⁹Department of Pharmacology, Columbia University Medical Center, New York, NY 10032 USA

Abstract

*Correspondence should be addressed to: Professor David Sulzer (ds43@columbia.edu), Columbia University Medical Center, 650 West, 168th Street, William Black Building, Neurology Dept, 3rd floor, Rm 308, New York City, NY 10032, Phone: +1 212 305 3967, Fax: +1 212 342 3664.

Author contributions

C.C. planned and executed most of the experiments in human brain tissue and in cultured neurons, interpreted the data, helped with the discussion of the results and wrote and submitted the manuscript. F.A.Z. planned and performed the electron microscopy and mass spectrometry experiments, wrote the corresponding section of the manuscript and assisted with the discussion of the manuscript. P. M. helped with the execution of the electron microscopy and the mass spectrometry experiments. J. S. executed the hES experiments and wrote the corresponding part of the manuscript. L. S. helped with the planning of experiments and discussion of the hES results. C. R. S. analyzed and interpreted the microarray data, wrote the corresponding section of the manuscript, and reviewed the manuscript. E. K. prepared the neuronal cultures. S. B. designed some of the OT-1 in vitro experiments. J. M. performed the BrDU experiment. J. P. V. provided insight in the interpretation of the immunolabel of human brain tissue. L. Z. supervised the electron microscopy and the mass spectrometry experiments and helped with the discussion of the results and the writing of the manuscripts. J. D. L. helped with the discussion of the results and the writing of the manuscript. D. S. supervised all experiments, participated in the discussion of all results and wrote the manuscript.

Competing financial interests

The authors declare no competing financial interests.

Accession Code

The National Brain Databank (NBD) microarray data set is publicly available in the National Brain Databank database under the accession name "Parkinson's". The Middleton-1 microarray data set is publicly available in the NCBI Gene Expression Omnibus (GEO) database under accession number GSE20141.

Subsets of rodent neurons are reported to express major histocompatibility complex class I (MHC-I), but such expression has not been reported in normal adult human neurons. Here we provide evidence from immunolabel, RNA expression, and mass spectrometry analysis of postmortem samples that human catecholaminergic substantia nigra and locus coeruleus neurons express MHC-I, and that this molecule is inducible in human stem cell derived dopamine (DA) neurons. Catecholamine murine cultured neurons are more responsive to induction of MHC-I by gamma-interferon than other neuronal populations. Neuronal MHC-I is also induced by factors released from microglia activated by neuromelanin or alpha-synuclein, or high cytosolic DA and/or oxidative stress. DA neurons internalize foreign ovalbumin and display antigen derived from this protein by MHC-I, which triggers DA neuronal death in the presence of appropriate cytotoxic T-cells. Thus, neuronal MHC-I can trigger antigenic response, and catecholamine neurons may be particularly susceptible to T cell-mediated cytotoxic attack.

Introduction

Antigen presentation requires the expression of major histocompatibility complex (MHC) molecules. This involves the partial intracellular degradation of self and non-self proteins into 8-14 amino acid peptides, loading the peptides to the antigen binding groove of the MHC class I (MHC-I) or class II (MHC-II), and translocating the complex to the cell surface for display¹.

Although detection of MHC-I in the mature rodent central nervous system (CNS) was for many years confined to glial cells², a body of continuing reports demonstrates that MHC-I can be expressed by some neuronal populations, both *in vitro*, usually triggered by exposure to interferon gamma (IFN- γ), and *in vivo*. An initial study showed that MHC-I genes could be induced by IFN- γ in cultured rat hippocampal neurons³. Subsequently, mRNA for MHC-I was identified in multiple regions of the neonatal and adult rodent brain including the substantia nigra (SN), brainstem motor neurons⁴, the lateral geniculate nucleus (LGN), the cortex, the hippocampus⁵ and cerebellum⁶. Subunits of the MHC-I molecule were detected by immunolabel in these regions^{7,8}, with expression gradually decreasing as neonatal mice reached adulthood in regions including cingulate cortex and the hippocampus⁸. These data suggest a potential role of MHC-I in early development that may be absent in maturity.

Neuronal MHC-I expression is thought to play a role in early developmental synaptic plasticity⁹⁻¹¹, in regeneration of neurons after axotomy¹² and in hippocampus-dependent memory¹³. MHC-I expression has also been shown in cultured hippocampal embryonic neurons that were targeted and killed by CD8⁺ cytotoxic T cells (CTLs) in response to exogenous viral or ovalbumin (OVA)-derived antigens^{14,15}. Finally, neurons can be MHC-I-dependent targets for CTLs following neurotropic viral infections¹⁶.

In humans, MHC-I has been reported in microglia and endothelia of the hippocampus in control individuals and Alzheimer's disease patients¹⁷. MHC-II immunolabel of microglia, but not neurons, has been shown in the SN of patients with Alzheimer's and Parkinson's disease (PD)¹⁸, and in the hippocampus of patients with dementia with Lewy bodies¹⁹. Neuronal expression of MHC-I in the human brain has only been reported in a small number of studies. The first was a study of a childhood viral infection, Rasmussen's encephalitis, in

which immunolabel for the MHC-I component, beta 2 microglobulin ($\beta 2m$), was present in cortical and hippocampal neurons²⁰; more recently, MHC-I has also been observed in dysmorphic/dysphasic cortical neurons of focal cortical dysplasia, tuberous sclerosis complex and ganglioglioma cases²¹ and in the embryonic LGN of the dorsal thalamus²² and hippocampus²³. In the LGN, $\beta 2m$ was observed at 29–31 gestational weeks but, was nearly absent by postnatal day 55, and was completely absent in the adult²². MHC-I in the human visual cortex was not observed at any gestational or postnatal stage²², while the expression of MHC-I was very low in the hippocampus at 20 gestational weeks and slowly increased during weeks 27–33. A rapid increase in MHC-I molecule expression was found in the subiculum that reached high levels at 31–33 gestational weeks, but no expression of MHC-I was found in the adult hippocampus²³. To date, there has been no evidence reported of neuronal MHC-I expression in the normal adult human brain.

In this study, we show that in human postmortem samples from adult control individuals and PD patients, MHC-I is expressed by SN dopaminergic (DA) and locus coeruleus (LC) norepinephrinergic (NE) neurons; the proportion of catecholamine locus coeruleus neurons that express MHC-I in humans is higher in controls than in PD subjects; human stem cell (hES)-in vitro- derived DA neurons can be induced to express MHC-I in their membranes; catecholamine murine neurons in primary culture are more prone to display MHC-I upon IFN- γ challenge than non-catecholamine neurons; SN DA murine neurons in culture display MHC-I in response to microglia activated by neuromelanin (NM) or alpha-synuclein (α -syn), substances found extracellularly in postmortem PD brain; in the absence of microglia, chronic exposure to the DA precursor, L-dihydroxyphenylalanine (L-DOPA), induces MHC-I in SN DA murine neurons; SN murine neurons in culture can process and present foreign protein antigens by MHC-I; in the presence of the appropriate antigen and CTLs, MHC-I expressing SN murine neurons are destroyed. These findings suggest that neuronal MHC-I expression and antigen display in catecholamine neurons may be triggered by microglial activation or high cytosolic DA, which, in the presence of the appropriate antigen and CTLs, could play a role in neuronal death during diseases in which CNS inflammation is robust.

Results

MHC-I in human catecholamine neurons

Human MHC-I consists of an α chain encoded by human leukocyte antigen (HLA) genes (HLA-A, HLA-B and HLA-C) and a noncovalently associated $\beta 2m$ subunit. We used a variety of techniques to assess the presence of MHC-I in human postmortem samples. First, we examined MHC-I expression by immunofluorescence using a primary antibody against human HLA chain (amino acids 63-362) that detects an epitope common in HLA-A, B and C, together with an antibody against Fox-3, a neuronal nuclei marker. We initially examined sections of hippocampus with adjacent entorhinal cortex from human controls (59–85 years old). Consistent with previous reports, blood vessels in hippocampus and cortex were labeled for HLA, and we did not observe any label in neurons or glia (Fig. 1A). MHC-II was never observed in neurons. Similarly, HLA immunolabel in sections of the caudate nucleus

from control postmortem samples in the same age range was observed only in blood vessels, and not in glia or neurons (Fig. 1A).

We then performed double immunolabeling for HLA and Fox-3, or HLA and the catecholamine marker tyrosine hydroxylase (TH), in the SN and LC of control and PD samples. In sharp contrast to the other brain regions examined, HLA immunolabel was present selectively in many of the TH⁺ NM containing neurons, as well as blood vessels (Fig. 1B and Supplementary Fig. 1). We independently confirmed the presence of MHC-I in SN neurons by double immunofluorescence label for TH and an antibody against amino acids 1-120 of human β 2m, the β chain component of MHC-I (Fig. 1C). The β 2m cellular distribution and neuronal pattern of staining appeared identical to that of the HLA β chain (compare Fig. 1B and 1C). Immunolabel for both MHC-I components was observed throughout the cytosol and often at particularly high levels in regions associated with NM in both SN and LC catecholamine neurons (Fig. 1B, C, D and Supplementary Fig. 1). The specificity of the neuronal MHC-I immunolabel was confirmed by the absence of staining when the respective primary antibodies were pre-adsorbed by recombinant HLA or β 2m peptides (see Methods).

In SN postmortem material from 8 control individuals, 62.53 ± 8.6 % (mean \pm SEM) of TH⁺ neurons displayed HLA⁺ label, whereas 49.03 ± 8.7 % (mean \pm SEM) were labeled in 8 aged-matched PD patients (Fig. 1E). Only < 3 % of TH⁻ SN control neurons and < 7 % of TH⁻ SN PD patient neurons expressed HLA (Fig. 1G). In the same sections, we observed no DA neurons in the ventral tegmental area (VTA) that expressed MHC-I (Supplementary Fig. 2A). In the LC, 80.3 ± 1.8 % (mean \pm SEM) of TH⁺ neurons were HLA⁺ from 8 control individuals, and 37.3 ± 11.8 % of TH⁺ were HLA⁺ in neurons of 9 aged-matched PD patients; this difference was statistically significant (Fig. 1F). No TH⁻ neurons expressed HLA label in LC control samples, and less than 5% TH⁻ did in LC PD (Fig. 1G).

We used multiple approaches to corroborate the identification of MHC-I in SN neurons obtained by immunofluorescence. To discard artifacts due to autofluorescence, we assessed the presence of MHC-I via immunoperoxidase label. HLA label was clearly present in blood vessels, and negligible in microglia, astrocytes, and NM⁻ neurons (Supplementary Fig. 2B). In contrast, we observed clear HLA immunoperoxidase label in NM⁺ SN and LC neurons, both in control and in PD samples (Fig. 2A). MHC-II was never observed in neurons. We then examined HLA immunolabel in LC and SN from control samples by immunoelectron microscopy. Consistent with the immunofluorescent images of MHC-I, immunogold label for MHC-I was associated with blood vessels and was clearly present in NM organelles in LC and SN neurons (Fig. 2B, Supplementary Fig. 2C).

As NM organelles can be efficiently isolated from human SN^{24,25}, mass spectrometry was used to detect the presence of MHC proteins in isolated NM organelles and purified NM. A variety of MHC-I components, including peptides corresponding to alleles of HLA-A, HLA-B, HLA-C and β 2m genes (Fig. 2C, Table 1) were detected in both NM organelles and purified NM; in contrast, no MHC-II peptides were identified in any human SN NM sample..

We then evaluated the abundance of MHC-I mRNA in human NM⁺ SN neurons from control samples. SN NM⁺ neurons were laser-captured from postmortem specimens²⁶ and were found to display robust expression of β 2m, HLA-A, and HLA-C genes in two independent laser-captured NM⁺ SN neuron data sets comprised of nine (Fig. 2D) and eight control individuals without neurodegenerative disease (mean age at death (range), 75 y (61–80), and 67 y (47–94), respectively).

It is impossible to determine if neuronal MHC-I in postmortem tissue was immunologically competent, but the presence of CTLs in SN and LC would indicate that such interactions could occur. CD8⁺ and CD4⁺ cells have been identified previously in human SN in close vicinity to NM⁺ neurons, and are present at particularly high levels in PD²⁷. Using double immunolabel for HLA and CD8⁺ CTLs in SN and LC samples, we sometimes observed CD8⁺ CTLs in close proximity to HLA-expressing NM⁺ neurons in both control (Fig. 2E) and PD specimens (Supplementary Fig. 2D); in some cases, catecholaminergic HLA⁺ neurons and CTLs appeared to be in contact (Fig. 2E).

MHC-I induction hES-derived DA neurons

CNS neurons in postmortem samples do not retain intact plasma membranes. To confirm that MHC-I can be localized in the plasma membrane of human DA neurons, we examined neuronal cultures derived from hES that exhibit a range of properties of SN DA neurons²⁸. Mature midbrain DA neurons (150 days in culture) displayed a dense TH⁺ fiber network that extended over distances of several millimeters. IFN- γ is a proinflammatory cytokine found at high levels in cerebrospinal fluid and blood of patients with neurodegenerative disorders³⁰ that induces MHC-I expression in antigen presenting cells by activating a regulatory element of the MHC-I promoter²⁹. Untreated DA neurons exhibited no MHC-I; however, human IFN- γ induced plasma membrane expression of MHC-I by virtually all TH⁺ neurons (Figure 2F). In control experiments to assess neuronal specificity, mature motor neurons derived from hES were examined after exposure to human IFN- γ , but no MHC-I expression was observed (Supplementary Fig. 3A).

Induction of neuronal MHC-I in murine catecholamine neurons

To study the mechanisms underlying the preferential display of MHC-I by catecholamine neurons, we examined primary neuronal cultures of >7 days in vitro prepared from 0–3 day old C57BL/6 mice³¹. DA neurons from VTA and SN and NE neurons of the LC were identified by immunolabel for TH. We examined MHC-I staining using an antibody raised against the H-2K^b and H-2D^b class I mouse alloantigens. Untreated TH⁺ neurons exhibited no MHC-I immunolabel (Fig. 3A). We then examined the response to recombinant mouse IFN- γ , which induced robust plasma membrane neuronal MHC-I expression on TH⁺ neurons (Fig. 3A; Supplementary Movie 1)

Detection of MHC-I immunolabel can be influenced by fixation, and therefore we also examined labeling of living neurons. Immunolabel for MHC-I was absent in control neuronal cultures and was observed in unfixed neurons only following IFN- γ (Supplementary Fig. 3B), indicating that detection of neuronal MHC-I was not an artifact of fixation.

To confirm that the immunolabel was specific for MHC-I, we examined neurons cultured from MHC-I null (“knockout”: KO) mice that are deficient for $\beta 2m$ (B6.129P2-B2mtm1Unc/J). As expected, IFN- γ did not induce MHC-I (H-2Kb and H-2Db) immunolabel in the mutant neurons (Fig. 3A). We further conducted a series of control experiments in which we examined wild type and KO astrocytes combinatorially with wild-type and KO neurons. For each combination, wild type neurons and astrocytes were induced to express MHC-I by IFN- γ , while in each case the KO neurons and astrocytes never expressed MHC-I.

We compared the response to IFN- γ by LC and ventral midbrain (VM: SN and VTA) catecholamine neurons to cortical, thalamic, striatal and non-DA SN cultured neurons that were identified by label for the neuron specific cytoskeleton protein, microtubule-associated protein-2 (MAP-2). Catecholamine neurons of the SN, VTA and LC were far more responsive to IFN- γ than were non-catecholamine neurons: even 1000-fold excesses of IFN- γ did not induce non-catecholamine neurons to express MHC-I at the level of catecholamine neurons (compare 100 pg/ml to 100 ng/ml, Fig. 3B).

Regulation of MHC-I expression by activated microglia

The induction of MHC-I in our SN neuronal culture experiments, as well in prior reports from other neurons^{14,15}, was triggered by IFN- γ . This cytokine is considered to be a product of lymphoid cells, but CNS microglia provide an alternate source of this proinflammatory signal³². Activated microglia have long been recognized in a variety of neurodegenerative disorders, including PD³³. Extracellular NM, which is a remnant of dead SN neurons³², and various forms of extracellular α -syn can activate microglia^{34,35}. Using an enzyme-linked immunosorbent assay (ELISA), we found that primary microglial cultures exposed to human NM or native α -syn for 72h secreted 5–10 fold more IFN- γ than untreated cells (Fig. 3C). Control experiments revealed that lipopolysaccharide (LPS), an inflammatory component from Gram-negative bacteria, also induced IFN- γ secretion in primary microglial culture (Fig. 3C).

Both overexpression and multiple mutations of α -syn are implicated in PD^{36,37}. We examined the effects of conditioned media from microglial cultures exposed to NM or a variety of modified α -syn proteins on neuronal MHC-I expression. The conditioned medium obtained from microglia cultures incubated for 72 hours with NM, α -syn, NM with α -syn, nitrated α -syn (Nit- α -syn), A53T mutant α -syn (Mut- α -syn), or LPS, elicited cell surface MHC-I presentation by VM neurons (Fig. 3D). This induction of MHC-I expression was in part mediated by IFN- γ , as the addition of IFN- γ neutralizing antibody to the conditioned medium decreased MHC-I expression by 30–50% (Fig. 3E). In contrast, there was no induction of neuronal MHC-I when cultures were directly exposed to equivalent levels of LPS, α -syn, or NM in the absence of microglial cells. These results indicate that substances including NM and α -syn can activate microglia, as demonstrated by the release of IFN- γ , as well as that additional inflammatory factors induce MHC-I display by VM neurons.

Primary cortical and striatal neurons were also analyzed for MHC-I expression after exposure to microglial medium pre-incubated for 72 hours with LPS, NM or α -syn under the same conditions used for VM DA cultures. Under these conditions, cortical and striatal

neurons also expressed MHC-I, but at a significantly lower proportion than VM DA neurons (Supplementary Fig. 3C).

Regulation of MHC-I expression by oxidative stress

Protein oxidation has been suggested to provide a “global signal” that induces MHC-I expression³⁸. DA-derived oxidative stress has been associated with neurodegenerative diseases including PD³⁹, in part because cytosolic DA, which is also the precursor to NE in LC neurons, can be metabolized to a quinone that reacts with proteins including α -syn^{40,41}. DA-modified α -syn leads to cellular toxicity and autophagy dysfunction^{42,43}. Moreover, oxidation of cytosolic DA triggers NM synthesis as an autophagic cellular stress response²⁴. We thus hypothesized that conditions that promote oxidative stress via high cytosolic DA⁴⁴ may account for the selectivity of neuronal MHC-I expression by catecholamine neurons.

To enhance cytosolic DA, we used the DA precursor, L-DOPA, which is accumulated by amino acid transport and converted into DA in the cytosol. Exposure to high levels of L-DOPA can produce NM in both catecholaminergic and nominally non-catecholaminergic cells²⁴. L-DOPA is used therapeutically in PD treatment, and while there is no clear evidence indicating that L-DOPA is toxic in humans including PD patients, the compound can be toxic to cultured cells^{44,55}. We exposed SN murine neuronal cultures to L-DOPA under conditions that substantially increase cytosolic DA as measured by intracellular patch electrochemistry⁴⁴ and promote NM production as observed by bright field microscopy²⁴. Control SN neurons exhibited no visible NM, while the addition of L-DOPA induced NM in 40% of the neurons (Fig. 4A and 4B), confirming the formation of non-degradable oxidized catecholamine products within autophagic organelles²⁴. We found that L-DOPA stimulated neuronal MHC-I display in ~10% of TH⁺ neurons and ~7% of TH⁻ neurons (Fig. 4C).

Altogether, our data indicate that high levels of neuronal DA can induce the formation of pigmented NM organelles and the presentation of neuronal MHC-I even in the absence of microglia or exogenously added IFN- γ . This suggests that redox stress in neuronal cytosol due to cytosolic catecholamines could underlie the particular expression of MHC-I by catecholamine neurons. This is also consistent with the observation that TH⁻ neurons can display MHC-I when treated with L-DOPA, which induces accumulation of catechols in cytosol followed by their subsequent oxidation. We note that L-DOPA exposure in patients is substantially lower than in our culture system, and may not be sufficient to enhance oxidation or MHC-I display, but our findings suggest that a history of cytosolic catecholamine could underlie the MHC-I display specific to catecholamine neurons in adult human.

SN neurons are antigen presenting cells

A characteristic of “professional” antigen cells such as dendritic cells (DCs) is their capacity to process and load antigen onto the MHC-I groove. While previous *in vitro* studies show hippocampal neurons display MHC-I upon exposure to IFN- γ and present small peptides exogenously added to the culture^{14,15}, there are to our knowledge no reports examining whether neurons can internalize, process and load antigens onto MHC-I as other cells do.

To examine antigen presentation by cultured neurons, we removed all sources of bovine serum albumin (BSA) from the media, and exposed VM neuronal cultures to chicken OVA. OVA is a 385 amino acid foreign protein that can be cleaved to an 8 amino acid SIINFEKL peptide by DCs and other “professional” antigen presenting cells; the SIINFEKL peptide is then loaded and presented in their MHC-I groove⁴⁶.

Following exposure of SN neuronal cultures to OVA for 7 days, neurons were exposed to IFN- γ for 72 h (note that these cultures were never exposed to SIINFEKL). We then double immunolabeled our cultures for TH and an antibody that recognizes the MHC-I complex only when occupied by SIINFEKL (SIINFEKL-MHC-I). Occasional label of astrocytes, but not neurons, for SIINFEKL-MHC-I was observed when the cultures were exposed to the vehicle, IFN- γ , or OVA alone (Fig. 5A). In contrast, ~10% of TH⁺ neurons exposed to both OVA and IFN- γ were immunolabeled for SIINFEKL-MHC-I ($p < 0.001$, one-way ANOVA; Fig. 5B) that was present throughout the cytoplasm, indicating that SIINFEKL was loaded onto MHC-I within the neuron. In contrast, when cultures were exposed to IFN- γ with extracellular SIINFEKL as a positive control, ~70% of TH⁺ neurons exhibited SIINFEKL-MHC-I immunolabel selectively on the plasma membrane and not in the cytosol ($p < 0.001$, one-way ANOVA, Fig. 5A, B). Our results indicate that OVA had been processed to SIINFEKL within these mixed neuron/astrocyte cultures and loaded into the MHC-I groove within neuronal cytosol, and that the resulting complex was presented on the neuronal plasma membrane.

VM DA neuronal killing by CTLs

We first examined the capacity of CTLs to respond to MHC-I induced SN neurons by following CTL proliferation using 5-bromo-2-deoxyuridine (BrdU) incorporation. We compared the induction of CTL proliferation by DCs and VM neuronal cultures using OT-1 CTL cells that constitutively recognize and respond to SIINFEKL⁴⁷, and found that the combination of IFN- γ and SIINFEKL induced similar CTL proliferation by both DC and VM neuronal cultures (Supplementary Fig. 3D). In contrast, we observed no neuronally induced proliferation of another clonal CD4⁺ T-cell line that specifically recognizes MHC-II.

These results led us to examine whether neuronal antigen-loaded MHC-I was competent to trigger CTL mediated cell death. We used the OT-1 CTL line as effector cells⁴⁷ and SIINFEKL peptide-pulsed SN neurons as target cells. The combination of CTLs, IFN- γ , and SIINFEKL killed 65% of TH⁺ neurons; as expected, no neuronal death was triggered in similarly treated cultures of MHC-I null (knockout: KO) SN neurons (Fig. 6A). The presence of CTLs was required to elicit neuronal death, as medium conditioned by SIINFEKL-activated CTLs but with the CTLs themselves omitted, did not kill neurons (Supplementary Fig. 3E). To determine whether the astrocyte monolayer played a role in the CTL-mediated neuronal death, we compared cultures in which wild type or KO astrocytes were plated under wild-type ventral midbrain neurons. MHC-I was induced by IFN- γ , and then SIINFEKL and OT-1 cells were added to the culture. We did not observe different levels of neuronal death between neurons plated on wild type astrocytes or KO astrocytes,

indicating that the ability of astrocytes in culture to express MHC-I is irrelevant to OT-1 mediated neuronal death (Supplementary Fig. 3F).

We then explored the mechanism of induced neuronal death by CTLs. We found that the Fas/Fas ligand antagonist, Kp7-6, the caspase inhibitor, Z-VAD-FMK, and the perforin/granzyme antagonist, concanamycin A, each protected against CTL mediated neuronal death, and that the combination of Kp7-6 and concanamycin A completely blocked neuronal death (Fig. 6B). These results indicate that both Fas/Fas ligand and perforin/granzyme pathways play a role in SN neuron CTL-mediated death.

Finally, as predicted from MHC-I induction by activated microglia (Fig. 3D), the combination of SIINFEKL, CTLs and medium conditioned by microglia exposed to LPS, α -syn, or NM caused extensive neuronal death (Fig. 6C). Thus, SN neuronal MHC-I can be triggered by secretion of IFN- γ from microglia activated by proinflammatory compounds, or two substances, NM and α -syn, present in the extracellular milieu of the SN in PD.

Discussion

We propose an immunologically-based mechanism that may link activated microglia, increased cytosolic oxidative stress and neuronal death of catecholamine neurons. Microglia activated by NM, native α -syn, modified α -syn, or mutant α -syn release IFN- γ that in turn can induce MHC-I expression in neurons. Catecholamine neurons may be subject to additional oxidative stress due to the presence of cytosolic DA, and this could lead to their MHC-I induction. The capacity of catecholamine neurons to process and display antigens may render them selective targets for T-cell mediated cell death.

Although CNS neurons have been classically considered “immunoprivileged” and to not present antigen, several studies have identified neuronal MHC-I expression in rodents^{3,5,7,9,10,11,12,14,15}. We provide to our knowledge the first data demonstrating that human adult SN and LC neurons express MHC-I, as confirmed by a variety of approaches. First, we detected immunolabel for both MHC-I subunits, HLA and β 2m, in SN and LC neurons by fluorescent, histochemical, and electron microscopic means. Second, we identified mRNA for both subunits in laser captured SN NM-containing neurons. Third, using mass spectrometry, we could identify β 2m and specific HLA alleles both in isolated NM organelles and purified NM from organelles and tissues. The human population expresses thousands of HLA-A, B and C alleles⁴⁸, and remarkably, in samples of isolated NM organelles and purified NM obtained from a single subject’s SN, mass spectrometry identified peptides that indicate the expression of specific HLA-A, HLA-B and HLA-C alleles (Table 1). We thus find that a subset of adult human neurons express MHC-I. In agreement with previous studies^{21,22,23}, we did not observe the presence of neuronal MHC-I or β 2m in other regions of the adult brain examined including cortex, hippocampus or striatum. Human stem cell-derived DA neurons that exhibit properties of SN DA neurons²⁸ were induced to express MHC-I by human IFN- γ , a response analogous to that of mouse neurons. Thus, multiple lines of independent data demonstrate that human neurons, in particular catecholamine neurons, possess the ability to express MHC-I in their cell membrane.

When the expression of HLA in TH⁺ neurons was compared in postmortem samples from control *versus* PD individuals, we observed that the proportion of HLA⁺ in SN and LC neurons was higher in control than in pathological specimens (Fig. 1E and 1F). This would be expected if neurons that were HLA⁺ were selectively destroyed over the course of the disease. We stress, however, that the results must be interpreted cautiously, as the initial proportion of HLA⁺ cannot be ascertained, nor can the duration that human neurons express the protein. In many cases, moreover, the total number of surviving NM⁺/TH⁺ neurons, especially in the LC PD sections, was very low and unlikely to reflect the proportion during early disease stages. It is further possible that the presence of HLA in human catecholamine neurons is related to another biological process and not to antigen presentation.

We identified an association of MHC-I and NM organelles by mass spectrometry and immunolabel. NM organelles are autophagic lysosomes that trap and concentrate cytosolic and organelle proteins, and NM synthesis is induced by cytosolic DA²⁴. These lysosomal compartments may participate in neuronal antigen presentation, either as an alternative to or following proteasomal processing^{1,50}. New work demonstrates roles for autophagic lysosomes in the MHC-I response to bacterial infection⁵¹, suggesting that uptake into lysosomes may participate in the normal handling and degradation of the protein.

Consistent with previous studies^{3,14,15}, we found that cultured murine neurons from multiple regions (VM, LC, cortex, striatum, thalamus) could be induced to display MHC-I. Our data demonstrate that catecholamine neurons of the VM and LC were the most responsive to MHC-I induction. L-DOPA, which is converted to cytosolic DA in SN and LC neurons, triggered MHC-I expression, consistent with a role for oxidative stress in enhancing MHC-I³⁸ via cytosolic catecholamine oxidation. It may be that the presence of cytosolic catecholamine is responsible for the particular presence of MHC-I in human SN and LC catecholamine neurons. We note that these findings should not be construed as suggesting that L-DOPA should not be used clinically; the high exposures used in this study are intended to load the cytosol with high DA levels and not to emulate therapeutic L-DOPA exposure in patients with PD. Additional oxidative stress in LC and SN neurons may result from tonic neuronal firing activity driven by L-type calcium currents^{44,49}.

Our results with OT-I T cells indicate that neuronal death ensues when neuronal MHC-I is expressed and displays a specific antigen recognized by a specific CTL. Previous studies of neuronal killing by CTLs^{14,15} used exogenous short viral and OVA-derived peptides in culture. We report that VM DA neurons can internalize and present foreign antigen, since addition of the large precursor protein OVA to VM cultures induced SIINFEKL-MHC-I expression on the plasma membrane and within neuronal cytosol. This neuronal MHC-I is immunologically competent, as demonstrated by the induction of CTL proliferation and both Fas and perforin-based CTL neuronal killing. While the loading of peptide onto MHC-I can apparently occur in neurons as well as extracellularly, proteolytic processing of the OVA might occur in non-neuronal compartments, including in astrocytes or by extracellular proteases.

There is a general consensus that many neurodegenerative diseases induce a robust inflammatory response, but it remains unclear how this inflammatory response is related to

chronic neurodegeneration. Our results suggest a selective upregulation of neuronal MHC-I, antigen presentation and cytolytic activity that may participate under some physiopathological conditions. It has recently been demonstrated that microglia can be activated by substances released by degenerating neurons in PD, such as α -syn^{34,53} or NM^{35,52}, and that activated microglia can elicit neurotoxic responses^{54–56}. Both NM and α -syn are found extracellularly in the postmortem brain of PD patients⁵⁷, a disorder that features high levels of activated microglia in the SN³³ and high levels of intracellular oxidative stress³⁹. PD patients are reported to possess CNS chemotactic signals⁵⁸ and a compromised blood brain barrier^{59,60}, which may explain why CTLs are found at substantially higher numbers in PD patients than age-matched controls²⁷.

Catecholamine neuronal display of antigenic MHC-I could participate in a range of additional neurological disorders. For example, Japanese encephalitis virus can induce MHC-I expression in non-neuronal cells by interferon type 1⁶¹, while in mice, IFN- γ plays a role in paraquat-induced neurodegeneration involving oxidative and proinflammatory pathways⁶². CNS-directed expression of IFN- γ produces basal ganglia calcification and nigrostriatal degeneration⁶³. In human case studies, a link is described between chronic hepatitis C patients who were treated with type 1 interferon and developed PD-like symptoms that reversed when the treatment was halted⁶⁴. Thus, both clinical reports and the present results suggest reason to further explore roles for activated microglia, antigen presentation, neuronal MHC-I expression, and recruitment of CTLs in neurodegenerative diseases, including PD, that feature the presence of T-cells, activated microglia, intracellular oxidative stress and aggregates of α -syn in the SN and LC.

Materials and Methods

Tissue obtaining and handling

This study was approved by the Institutional Review Board of: the Institute of Biomedical Technologies - National Research Council of Italy (Segrate, Milano, Italy), the New York Brain Bank (Columbia University) and the Center for Neurologic Diseases (Harvard Medical School). Informed consent was obtained from all subjects. Brain samples from 34 normal subjects and 9 PD patients were obtained during autopsy within 5–42 h after death of male and female subjects without evidence of neuropsychiatric and other degenerative disorders. At histological examination, control samples showed no macroscopic neurological, vascular alterations, Lewy bodies or other pathological markers. Tissues from PD subjects were examined histologically by routine staining to confirm loss of SN and LC pigmented neurons, the presence of Lewy bodies and extraneuronal NM. Subjects ages were between 47 and 94 years old, and each PD sample was paired with an age-matched control. Samples from 8 control and 9 PD individuals were used for immunohistochemistry and immunofluorescence; samples from 1 control subject was used for electron microscopy; samples from 8 control subjects for mass spectrometry; two existing laser-captured microdissected microarray data sets of 17 controls were analyzed for mRNA expression.

Each experiment described below was performed at least in triplicate.

Immunohistochemistry and immunofluorescence

SN/VTA, LC, hippocampal with adjacent entorhinal cortex, and striatum (caudate) tissues blocks for histology and histochemistry were fixed in 10% formalin (pH 7.2–7.4) and embedded in paraffin⁶⁵. Tissue sections were incubated with citric acid at 95 °C for 30 minutes to retrieve antigen and blocked in normal serum; those sections designated for immunohistochemistry were treated with H₂O₂ to inactivate endogenous peroxidase. Primary antibodies for immunohistochemistry and immunofluorescence were the following: for human MHC-I, we used a mouse monoclonal antibody raised against amino acids 63-362 of the human HLA, 1:100, Santa Cruz Biotechnology (catalogue number: sc-55582; this epitope is shared by HLA-A, HLA-B and HLA-C and so detects all three), and β 2m (mouse monoclonal antibody raised against amino acids 1-120 of the human β 2m, 1:100, Santa Cruz Biotechnology, catalogue number: sc-13565). A second antibody against human β 2m was used (mouse monoclonal antibody raised against amino acids 1-119 of human β 2m, 1:100, Abnova, catalogue number: H00000567-M01), that provided the same pattern of staining as the HLA and the original β 2m antibodies. For human MHC-II: a mouse monoclonal antibody raised against HLA-DR/DP/DQ/DX (CR3/43), 1:100, Santa Cruz Biotechnology, catalogue number: sc-53302. For TH: rabbit polyclonal, 1:2000, Millipore, catalogue number: AB152. For Fox-3: rabbit polyclonal, 1:500, Abcam, catalogue number: ab104225. For CD8⁺: rabbit polyclonal, raised against a synthetic peptide sequence comprising the 13 C-terminal amino acids of the cytoplasmic domain of α -chain of the CD8 molecule, 1:50, ThermoScientific, catalogue number: RB-9009-P1.

Preliminary control experiments in which the primary antibodies were omitted or HLA (A, B and C) and β 2m antibodies were pre-absorbed with the corresponding neutralizing peptide (293T cell lysate transfected with the sequence corresponding to the HLA epitope shared by HLA A, B and C and human full-length β 2m peptide respectively), were performed in order to confirm the specificity of the primary antibodies (Supplementary Fig. 4A).

The HLA (A, B and C) and β 2m primary antibodies produced a pattern of label similar to well established MHC-I⁺ structures in human. The immunolabel of blood vessels within the same sections was used as an internal positive control to confirm that the labeling techniques were successful. As the pre-adsorption control does not prove that the monoclonal antibody does not bind another protein, but rather that it binds to the protein of interest, additional controls for HLA and β 2m primary antibodies were carried out. From one control brain, the SN of the opposite hemisphere that was processed for immunostaining was homogenated for western blots. Both antibodies produced a single, clear band that matched with the appropriate molecular weight (46 KDa for HLA and 12 KDa for β 2m, see Supplementary Fig. 4B, C). As an additional control for CD8⁺ antibody, human spleen (paraffin sections obtained from Cell Marque) was used to test specificity of this antibody, as well as absence of labeling when omitting the primary antibody (Supplementary Fig. 4D).

Sections designated for immunohistochemistry were incubated with a biotinylated secondary antibody (1:200, VectorLabs) followed by avidin-biotin complex (VectorLabs); V-VIP was used as the chromogen (VectorLabs). Sections designated for immunofluorescence were incubated with secondary fluorescent antibodies (Alexa Fluor-488 or Alexa Fluor-594, 1:400, Invitrogen) and mounted with a water-based medium. Images were captured with a

Leica SP5 microscope. There was no fluorescence bleedthrough of secondary antibodies under the conditions used. Counting of NM⁺, TH⁺ and HLA⁺ neurons was performed in three sections per patient (n = 8 or 9 patients per condition) using a fluorescent microscope at 20X magnification. Quantification was based on the absolute presence of HLA and rated as positive or negative.

Electron microscopy

Immunoelectron microscopy experiments were carried out on tissue blocks fixed in 4 % paraformaldehyde /0.25 % glutaraldehyde in cacodylate buffer (0.12 M, pH 7.4) and embedded in LRW resin. Ultrathin sections were incubated with an HLA (A, B and C) antibody (1:200, Santa Cruz Biotechnologies) and then with a gold particle (15 nm)-conjugated secondary antibody (1:100, British Biocell International). Micrographs were acquired by a transmission electron microscope LEO 912 (Advanced Light and Electron Microscopy BioImaging Center - San Raffaele Scientific Institute).

Mass spectrometry

MHC-I peptides were identified by mass spectrometry in NM pigment isolated from SN, organelles containing NM, and NM separated from organelles obtained as reported. Digested peptides were separated by two-dimensional micro-liquid chromatography coupled to an ion trap mass spectrometer (2DC-MS/MS). The SEQUEST database search algorithm was used to match experimental spectra to peptide sequences in the database. Peptide search was executed against an updated non-redundant human protein sequence database and MHC-I isoform (HLA gene) database from National Center for Biotechnology Information (NCBI) (www.ncbi.nlm.nih.gov).

Laser capture microdissection and bioinformatics analysis

Affymetrix CEL files for the National Brain Databank data set (NBD) and the Middleton-1 data set were normalized to “all probe sets” using standard procedures, and scaled to 100 by the MAS5 algorithm implemented in the Bioconductor package^{26,66}. Laser-capture microdissection and microarray methods used to generate the NBD and the Middleton-1 data sets were conducted in human SN NM⁺ neurons^{26,67} respectively.

Western blotting

Tissue for western blotting was obtained from the New York Brain Bank frozen, and then rapidly homogenated at 4 °C in lysis buffer containing 50 mM of Tris-HCl, 150 mM of NaCl, 5 mM of EDTA and 1% of Triton-Tx. Protein concentration of the total homogenate was measured using the BCA assay (Thermo Scientific). 60 µg of protein per lane were run on a 10% polyacrylamide gel for HLA antibody and on a 15% polyacrylamide gel for β2m antibody. Proteins were transferred to PVDF membranes (Immobilon, Millipore Corporation, Bedford, MA, USA). After blocking in 5 % dry milk, primary antibodies were applied overnight at 4 °C, then rinsed 3 times in Tris-buffered saline containing 0.1% Tween-20 (Fisher Scientific). Peroxidase-labeled secondary antibodies were applied for 1 h at RT, blots rinsed in Tris-buffered saline-Tween as before, developed with enhanced chemiluminescence (Immobilon HRP substrate reagents, Millipore), and then exposed to

film (Crystalgen). HLA (1:100, from Santa Cruz Biotechnologies) and β 2m (1:100, from Abnova) primary antibodies were used. Actin (1:500,000, from Sigma Aldrich) primary antibody was used as a loading control.

hES derived DA neuronal cultures

hES derived DA neuronal cultures were obtained as described²⁸. Briefly, H9 human ES cells were subjected to dual SMAD-inhibition followed by exposure to sonic hedgehog, purmorphamine, FGF8 and CHIR99021. Neurons were passaged on day 20, replated on glass-bottom dishes on day 30 at a density of 200,000 cells per 20 μ l droplet, and then matured in Neurobasal media with the addition of B27 supplement, GDNF, BDNF, ascorbic acid, cAMP, TGFbeta and DAPT. hES derived spinal motor neuron (MN) cultures expressing EYFP under control of the human synapsin promoter were generated by exposure to dual SMAD-inhibition followed by caudalization with retinoid acid and ventralization through the hedgehog pathway. MN aggregates were replated on day 20 and matured in Neurobasal media with the addition of B27 supplement, GDNF, BDNF, ascorbic acid, cAMP and DAPT.

Cultures were treated with human IFN- γ (eBioscience) at a non-toxic concentration for hES (100 ng/ml, 72h). Cultures were then incubated with the MHC-I antibody prior to fixation in 4% paraformaldehyde and double immunofluorescence for TH and MHC-I as above. Micrographs were acquired using a Leica TCS SP5-II inverted confocal microscope.

Mice

Animal protocols were approved by the Columbia University Institutional Animal Care and Use Committee and in accordance with the National Institutes of Health Guide to the Care and Use of Laboratory Animals guidelines. Mouse lines including wild type C57BL/6, OT-1, OT-2 and B6.129P2-B2mtm1Unc/J mice were maintained under pathogen-free conditions and had access to food and water ad libitum. Each experiment described below was performed at least in triplicate.

Primary cultures

Primary cultures of microglial cells, SN, VTA, VM (including SN and VTA), LC, cortical, striatal and thalamic neurons were derived from brains of newborn C57/B16 or B6.129P2-B2m^{tm1Unc}/J mice (0–3 days, either sex)³¹. B6.129P2-B2m^{tm1Unc}/J mice were generated by a targeted disruption of the β 2m gene, and have little or no MHC-I protein expression on the cell surface⁶⁸. Briefly, for microglial cultures cells dissociated from 5 cortexes of 0–3 days old C57/B16 mice were seeded onto 75 cm² cell culture flasks in microglial culture medium (MEM supplemented with calf serum, glucose 45%, penicillin/streptomycin, insulin (25 mg/ml) and 200 mM glutamine) in a 5% CO² incubator at 37°C³¹. Two weeks later, microglia were detached from flasks by mild shaking and plated on 12 well-plates at a density of 45,000–50,000 microglial cells/well. For neuronal cultures, the area of interest was dissected and neurons were dissociated and plated at a density of 80,000/cm² onto a layer of rat cortical glial cells grown on round glass coverslips and maintained in culture medium without added GDNF (glial cell line-derived neurotrophic factor) in a 5% CO² incubator at 37°C for 5–9 days³¹.

Primary DCs were obtained from mouse (either sex) femur hematopoietic stem cells. In brief, mouse femur hematopoietic stem cells from bone marrow were harvested from the hind legs of 8 to 12-week old male wild-type C57BL/6J and plated at 2×10^6 cells/ml density in DC culture medium (DMEM supplemented with 10% FBS, 1x non-essential amino acids, 2 mM L-glutamine, 1 mM sodium pyruvate and 20 mM HEPES). For differentiation to dendritic cells, 10 ng/ml of recombinant mouse GM-CSF was added to media. Cells were fed every 2 days with fresh DMEM containing GM-CSF, and the cultures were trypsinized after 8 days and plated at 4×10^5 cells/cm² density to be used for experiments the following day⁶⁹.

OT-1 CD8⁺ and OT-2 CD4⁺ T cell lines, a kind gift from Dr. Raphael Clynes (Department of Medicine and Microbiology, Columbia University Medical Center), express a transgene encoding T cell receptor that specifically recognizes SIINFEKL peptide (derived from OVA) bound to MHC-I H-2Kb or to MHC-II I-A/I-E⁷⁰. Activated primary OT-1 and OT-2 T cells were generated by the addition of SIINFEKL to the cultures⁵⁸. Briefly, OT-1/OT-2 mouse spleens were dissected and homogenized, the released cells were pelleted and resuspended in 5 ml ACK buffer (0.15 M NH₄Cl, 1 mM KHCO₃, and 0.1 mM EDTA) for 1 min to lyse red blood cells, and the splenocytes were pelleted, washed, resuspended at 5×10^6 cells/ml in OT-1 growth medium containing 0.75 µg/ml SIINFEKL peptide, and incubated at 37°C in a 95% air/5% CO₂ humidified atmosphere. On days 3 and 5, 25 ml of fresh OT-1/OT-2 growth medium containing 10 U/ml of mouse recombinant IL-2 was added to the cultures. On day 7, the cells were harvested and OT-1/OT-2 cells were purified by centrifugation at 400 g for 30 min at room temperature over a Histopaque gradient (density = 1.083)⁴⁷.

Cellular treatments

IFN- γ (R&D Systems) was used at a range of non-toxic concentrations for neurons or OT-1 cells (10 pg/ml-100 ng/ml, 72h). 12-well cell culture plates were pre-treated with LPS (500 ng/ml, Sigma-Aldrich), NM (5µg/ml), α -syn, Nit- α -syn or Mut- α -syn (200 µg/ml, kindly provided by Peter Lansbury, Harvard University) for 72h before plating 45,000–50,000 microglial cells/well for an additional 24h. A neutralizing IFN- γ antibody (1:500, PBL InterferonSource) was used to block IFN- γ released from microglia. VM neurons were incubated for 72h with microglial medium pre-stimulated by LPS, NM, α -syn, Nit- α -syn or Mut- α -syn. As a control experiment, we directly incubated VM neurons with the same compounds in the absence of microglia. In another set of experiments, VM, cortical and striatal primary neurons were incubated for 72h with microglial medium pre-stimulated by LPS, NM, α -syn. NM was induced in SN cultured neurons by using L-DOPA²⁴ (Sigma Aldrich). For foreign protein processing and subsequent antigen presentation, VM cultures were maintained for 7 days in either 1) BSA/serum-free neuronal medium, 2) BSA/serum-free supplemented with OVA (2.5 mg/ml), adding IFN- γ (100 ng/ml) for an additional 72h. Double immunofluorescence for TH and SIINFEKL-MHC-I was done and neuronal counting performed.

ELISA

The concentration of IFN- γ released by microglia (plated as above) was measured by an ELISA kit (eBioscience) that detected the amount of this proinflammatory cytokine in a range of 0.7–100 pg/ml.

Immunofluorescence

Cell cultures were double-stained for MHC-I using a specific antibody raised against the H-2K^b and H-2D^b class I alloantigens (mouse monoclonal, 1:100, BD Biosciences, catalogue number: 553575), MHC-II (by using an mouse monoclonal antibody that reacts with a polymorphic determinant shared by the I-A[b], I-A[d], I-A[q], I-E[d], and I-E[k] MHC-II alloantigens, 1:100, BD Biosciences, catalogue number: 556999) or SIINFEKL-MHC-I (mouse monoclonal, 1:100, eBioscience, catalogue number 14-5743-81) and TH (rabbit polyclonal, 1:2000, Millipore, catalogue number: AB152) or MAP-2 (rabbit polyclonal, 1:1000, Millipore, catalogue number: AB5622), fixed with freshly prepared 4% paraformaldehyde (Electron Microscopy Sciences), blocked with normal serum (Jackson ImmunoResearch) and incubated with fluorescent secondary antibodies (Alexa Fluor-594 or Alexa Fluor-488, 1:400, Invitrogen). Images were captured using a Leica SP5 microscope system. There was no fluorescence bleed-through of secondary antibodies under the conditions used. MHC-I staining observed in the neuronal cultures obtained from wild type mice was absent in neurons from β 2m KO mice (Fig. 3A).

In order to assess the proportion of TH⁺ and MAP-2⁺ neurons that expressed MHC-I⁺, first TH⁺ and MAP-2⁺ neurons were counted in 24 fields surrounding the border of the well at 20X magnification. The number of TH⁺ or MAP-2⁺ neurons with intact soma and two or more neurites equal to or greater than the diameter of the cell soma was counted. Then, the fluorescent filter was inserted for each field to determine how many of these neurons also expressed MHC-I.

To further analyze the specificity of the MHC-I antibody, a western blot was run in wild type versus β 2m KO brain tissue (see western blot paragraph below for detailed method). A single band (~30 KDa) was observed in lanes loaded with brain tissue from wild type mice, whereas there were no visible bands in the lanes that contained brain tissue from β 2m KO. A positive control (mouse spleen homogenate) displayed a band at the same molecular weight (Supplementary Fig. 4D).

Western blotting

The brains of 3 C57/BL6 and 3 B6.129P2-B2m^{tm1Unc}/J were dissected on ice and then rapidly homogenated at 4 °C in lysis buffer containing 50 mM of Tris-HCl, 150 mM of NaCl, 5 mM of EDTA and 1% of Triton-Tx. Protein concentration of the total homogenate was measured using the BCA assay (Thermo Scientific). 20 μ g of protein per lane were run on a 12% polyacrylamide gel. Proteins were transferred to PVDF membranes (Immobilon, Millipore Corporation, Bedford, MA, USA). After blocking in 5 % dry milk, primary antibody (MHC-I antibody raised against the H-2K^b and H-2D^b class I alloantigens, mouse monoclonal, 1:100, BD Biosciences), was applied overnight at 4 °C, then rinsed 3 times in Tris-buffered saline containing 0.1% Tween-20 (Fisher Scientific). Peroxidase-labeled

secondary antibodies were applied for 1 h at RT, blots rinsed in Tris-buffered saline-tween as before, developed with enhanced chemiluminescence (Immobilon HRP substrate reagents, Millipore), and then exposed to film (Crystalgen). Actin (1:500,000, from Sigma Aldrich) primary antibody was used as a loading control. 20 µg of mouse spleen homogenate was loaded as a positive control for the MHC-I antibody.

Proliferation and killing assays

OT-1 CD8⁺ cell proliferation was assessed by BrdU incorporation. For OT-1 T-cell cytotoxicity assays, DC and VM (from C57BL/6 and B6.129P2-B2mtm1Unc/J mice) cell cultures were incubated with neuronal medium or neuronal medium containing 100 ng/ml of IFN-γ (R&D Systems). Neurons were loaded with or without SIINFEKL peptide (1 µM), and, subsequently in vitro activated OT-1 cells were added at a density of 100,000 cells/well and co-incubated for 24 h.

We used the same conditions for VM cell cultures with microglial medium previously stimulated with LPS, NM or α-syn instead of IFN-γ. Neurons were pre-incubated with IFN-γ and SIINFEKL peptide as above, and then with: 1) a pan-caspase general inhibitor (Z-VAD-FMK, 20 µM, 24h, IMGENEX); 2) a specific granzyme/perforin inhibitor (concanamycin A, 100 nM, 24h, Sigma Aldrich); 3) a specific Fas/FasL antagonist (Kp7-6, 1mM, 24h, EMD Biosciences) and 4) concanamycin A and Kp7-6 together. OT-1 cells were then added to the culture (100,000 cells/well) and maintained for 24 h.

Following immunocytochemical staining of VM neurons, we assessed the proportion of surviving DA (TH⁺) and non-DA cells (MAP-2⁺, TH⁻). Total numbers of TH⁺ and MAP-2⁺ neurons were counted in 24 fields surrounding the border of the well at 20X magnification. The number of surviving TH⁺ neurons with an intact soma and two or more neurites equal to or greater than the diameter of the cell soma was counted and normalized to the number in untreated cultures.

Statistics

Results are presented as mean ± standard error of the mean (SEM). Each experiment was repeated at least 3 times, and each condition was also examined in three subjects or cultures within each experiment. Two-way ANOVA was used to analyze the IFN-γ dose-response experiments. Two-tailed Student's T-test (or Man Whitney U test for non-parametric cases) or one-way ANOVA with Tukey post-hoc tests were used to analyze the other experiments.

Supplementary Material

Refer to Web version on PubMed Central for supplementary material.

Acknowledgments

We are thankful for the support of a postdoctoral grant from Caja Madrid Foundation (CC), the JPB Foundation (DS), the Parkinson Disease's Foundation (DS), the Udall Center of Excellence at Columbia (NINDS) (DS and JV), and the Section of Legal Medicine and Insurances, Department of Human Morphology and Biomedical Sciences at University of Milano (LZ). LZ and FAZ were supported by the Italian Ministry of Education, University, and Research (MIUR) - National Research Programme (PNR) – CNR Flagship “InterOmics” Project (PB.P05) and by the PNR – CNR Aging program (2012–2014). CRS is supported by NIH grants R01NS064155 and U01NS082157,

the Department of Defense, Michael J. Fox Foundation, and the M.E.M.O. Hoffman Foundation. JAS is supported by the German Research Council (DFG). LS is supported by NYSTEM contracts C024175 and C024414. The authors gratefully acknowledge Shaji Theodore for inspiring the idea that mature neurons might present antigen, Raphael Clynes for the OT-1 and OT-2 cell lines, Peter Lansbury for alpha-synuclein, Candace Barnard, Anastasia Barnett, Mark Sonders and Renzo Vanna for helpful technical assistance, Maria Carla Panzeri (Advanced Light and Electron Microscopy BioImaging Center – San Raffaele Scientific Institute) for skillful assistance in electron spectroscopic imaging, Katerina Mancevska and Etty Cortes for help providing human brain material, and Samuel C. Silverstein, Megan Sykes, Eugene Mosharov, Yvonne Schmitz, and Daniela Pereira for comments on experimental directions and the manuscript. We thank Dr. Bin Zheng for invaluable assistance with bioinformatics analyses, and the National Brain Databank of the Harvard Brain Tissue Resource Center at McLean Hospital for the NBD data set.

Abbreviations

α-syn	alpha synuclein
β2m	beta 2 microglobulin
BF	brightfield
BrdU	5-bromo-2-deoxyuridine
BSA	bovine seroalbumin
C+	positive control
ConA	concananycin A
CNS	central nervous system
CTLs	cytotoxic T cells
CTRL	control
DA	dopamine/dopaminergic
DCs	dendritic cells
ELISA	enzyme-linked immunosorbent assay
hES	human stem cells
HLA	human leukocyte antigen
IFN-γ	interferon gamma
KO	knocked out
LC	locus coeruleus
LGN	lateral geniculate nucleus
LPS	lipopolysaccharide
MAP-2	microtubule associated protein-2
MHC	major histocompatibility complex
MHC-I	major histocompatibility complex class I
MHC-II	major histocompatibility complex class II
MN	spinal motor neurons

Mut-α-syn	mutated (A53T) alpha synuclein
NE	norepinephrine/norepinephrinergic
Nit-α-syn	nitrated alpha synuclein
NM	neuromelanin
OVA	ovalbumin
SEM	standard error of the mean
SIIN	SIINFEKL peptide
SIINFEKL-MHC-I	the MHC-I complex when occupied by SIINFEKL peptide
SN	substantia nigra
TH	tyrosine hydroxylase
PD	Parkinson's disease
Veh	vehicle
VM	ventral midbrain
VTA	ventral tegmental area

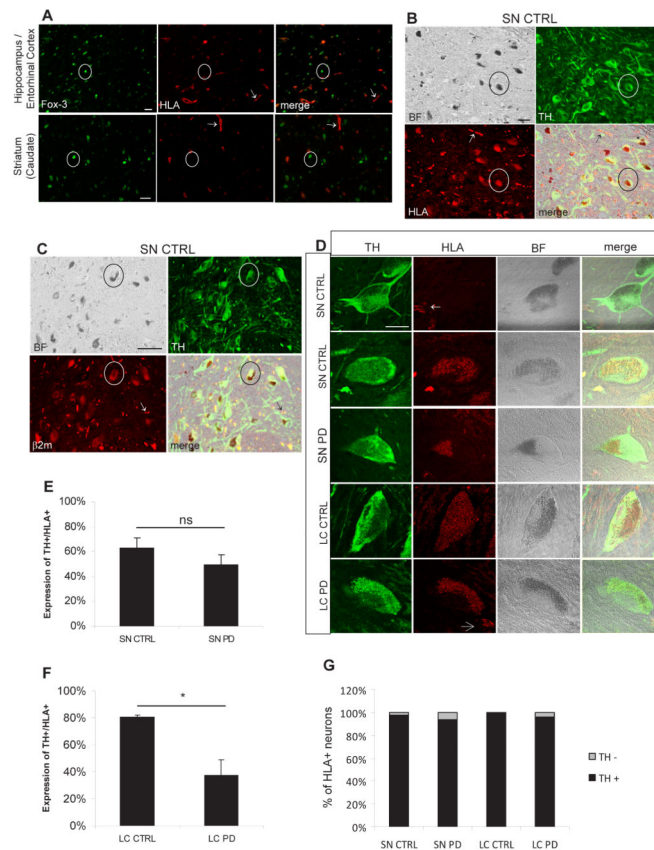
References

1. Chemali M, Radtke K, Desjardins M, English L. Alternative pathways for MHC class I presentation: a new function for autophagy. *Cell Mol Life Sci.* 2011; 68:1533–1541. [PubMed: 21390546]
2. Wong GH, Bartlett PF, Clark-Lewis I, Battye F, Schrader JW. Inducible expression of H-2 and Ia antigens on brain cells. *Nature.* 1984; 310:688–91. [PubMed: 6433204]
3. Neumann H, Cavalié A, Jenne DE, Wekerle H. Induction of MHC class I genes in neurons. *Science.* 1995; 28, 269(5223):549–52. [PubMed: 7624779]
4. Lindá H, Hammarberg H, Piehl F, Khademi M, Olsson T. Expression of MHC class I and beta2-microglobulin in rat spinal motoneurons: regulatory influences by IFN-gamma and axotomy. *Exp Neurol.* 1999; 150:282–295. [PubMed: 9527898]
5. Huh SG, Boulanger LM, Du H, Riquelme PA, Brotz TM, Shatz CJ. Functional requirement for class I MHC in CNS development and plasticity. *Science.* 2000; 290:2155–9. [PubMed: 11118151]
6. Letellier M, Willson ML, Gautheron V, Mariani J, Lohof AM. Normal adult climbing fiber monoinnervation of cerebellar Purkinje cells in mice lacking MHC class I molecules. *Dev Neurobiol.* 2008; 68(8):997–1006. [PubMed: 18418877]
7. Needleman LA, Liu XB, El-Sabeawy F, Jones EG, McAllister AK. MHC class I molecules are present both pre- and postsynaptically in the visual cortex during postnatal development and in adulthood. *Proc Natl Acad Sci U S A.* 2010; 107:16999–7004. [PubMed: 20837535]
8. Liu J, et al. The expression pattern of classical MHC class I molecules in the development of mouse central nervous system. *Neurochem Res.* 2012; 38(2):290–9. [PubMed: 23161087]
9. Goddard CA, Butts DA, Shatz CJ. Regulation of CNS synapses by neuronal MHC class I. *Proc Natl Acad Sci U S A.* 2007; 104(16):6828–33. [PubMed: 17420446]
10. Corriveau RA, Huh GS, Shatz CJ. Regulation of class I MHC gene expression in the developing and mature CNS by neural activity. *Neuron.* 1998; 21(3):505–20. [PubMed: 9768838]
11. Glynn MW, et al. MHCI negatively regulates synapse density during the establishment of cortical connections. *Nat Neurosci.* 2011; 14(4):442–51. [PubMed: 21358642]
12. Oliveira AL, et al. A role for MHC class I molecules in synaptic plasticity and regeneration of neurons after axotomy. *Proc Natl Acad Sci U S A.* 2004; 101:17843–8. [PubMed: 15591351]

13. Nelson PA, Sage JR, Wood SC, Davenport CM, Anagnostaras SG, Boulanger LM. MHC class I immune proteins are critical for hippocampus-dependent memory and gate NMDAR-dependent hippocampal long-term depression. *Learn Mem.* 2013; 20(9):505–17. [PubMed: 23959708]
14. Medana IM, Gallimore A, Oxenius A, Martinic MM, Wekerle H, Neumann H. MHC class I-restricted killing of neurons by virus-specific CD8+ T lymphocytes is effected through the Fas/FasL, but not the perforin pathway. *Eur J Immunol.* 2000; 30:3623–33. [PubMed: 11169405]
15. Meuth SG, et al. Cytotoxic CD8+ T cell-neuron interactions: perforin-dependent electrical silencing precedes but is not causally linked to neuronal cell death. *J Neurosci.* 2009; 29:15397–409. [PubMed: 20007464]
16. Chevalier GE, et al. Neurons are MHC class I-dependent targets for CD8 T cells upon neurotropic viral infection. *PLoS Pathog.* 2011; 7(11):e1002393. [PubMed: 22114563]
17. Tooyama I, Kimura H, Akiyama H, McGeer PL. Reactive microglia express class I and class II major histocompatibility complex antigens in Alzheimer's disease. *Brain Res.* 1990; 523:273–280. [PubMed: 2400911]
18. McGeer PL, Itagaki S, Boyes BE, McGeer EG. Reactive microglia are positive for HLA-DR in the substantia nigra of Parkinson's and Alzheimer's disease brains. *Neurology.* 1988; 38:1285–91. [PubMed: 3399080]
19. Imamura K, et al. Cytokine production of activated microglia and decrease in neurotrophic factors of neurons in the hippocampus of Lewy body disease brains. *Acta Neuropathol.* 2005; 109:141–150. [PubMed: 15619128]
20. Bien CG, et al. Destruction of neurons by cytotoxic T cells: a new pathogenic mechanism in Rasmussen's encephalitis. *Ann Neurol.* 2002; 51:311–8. [PubMed: 11891826]
21. Prabowo AS, Iyer AM, Anink JJ, Spliet WG, van Rijen PC, Aronica E. Differential expression of major histocompatibility complex class I in developmental glioneuronal lesions. *J Neuroinflammation.* 2013; 24(10):12. [PubMed: 23347564]
22. Zhang A, et al. The expression patterns of MHC class I molecules in the developmental human visual system. *Neurochem Res.* 2013; 38(2):273–81. [PubMed: 23124394]
23. Zhang A, et al. The spatiotemporal expression of MHC class I molecules during human hippocampal formation development. *Brain Res.* 2013; 5(1529):26–38. [PubMed: 23838325]
24. Sulzer D, et al. Neuromelanin biosynthesis is driven by excess cytosolic catecholamines not accumulated by synaptic vesicles. *Proc Natl Acad Sci U S A.* 2000; 97:11869–11874. [PubMed: 11050221]
25. Zecca L, et al. New melanic pigments in the human brain that accumulate in aging and block environmental toxic metals. *Proc Natl Acad Sci U S A.* 2008; 105:17567–72. [PubMed: 18988735]
26. Zheng B, et al. Global PD Gene Expression (GPEX) Consortium, PGC-1 α , a potential therapeutic target for early intervention in Parkinson's disease. *Sci Transl Med.* 2008; 52:52ra73.
27. Brochard V, et al. Infiltration of CD4+ lymphocytes into the brain contributes to neurodegeneration in a mouse model of Parkinson disease. *J Clin Invest.* 2009; 119:182–192. [PubMed: 19104149]
28. Kriks S, et al. Dopamine neurons derived from human ES cells efficiently engraft in animal models of Parkinson's disease. *Nature.* 2011; 480:547–51. [PubMed: 22056989]
29. van den Elsen PJ, Holling TM, Kuipers HF, van der Stoep N. Transcriptional regulation of antigen presentation. *Curr Opin Immunol.* 2004; 16:67–75. [PubMed: 14734112]
30. Mogi M, Kondo T, Mizuno Y, Nagatsu T. p53 protein, interferon-gamma, and NF-kappaB levels are elevated in the parkinsonian brain. *Neurosci Lett.* 2007; 414:94–97. [PubMed: 17196747]
31. Sulzer, D.; Trudeau, LE.; Rayport, S. Parkinson's Disease: Molecular and Therapeutic Insights from Model Systems. Nass, R., editor. Academic Press; 2008. p. 491-504.
32. Kawanokuchi J, et al. Production of interferon-gamma by microglia. *Mult Scler.* 2006; 12:558–64. [PubMed: 17086900]
33. Foix, C.; Nicolesco, J. Suivi d'un apéndice sur l'anatomie pathologique de la maladie de Parkinson. Paris: Masson et Cie; 1925. Anatomie cérébrale. Les noyaux gris centraux et la région Mésencéphalo-sous-optique; p. 508-538.

34. Zhang W, et al. Microglial PHOX and Mac-1 are essential to the enhanced dopaminergic neurodegeneration elicited by A30P and A53T mutant alpha-synuclein. *Glia*. 2007; 55:1178–1188. [PubMed: 17600340]
35. Zhang W, et al. Neuromelanin activates microglia and induces degeneration of dopaminergic neurons: implications for progression of Parkinson's disease. *Neurotox Res*. 2011; 19:63–72. [PubMed: 19957214]
36. Polymeropoulos MH, et al. Mutation in the alpha-synuclein gene identified in families with Parkinson's disease. *Science*. 1997; 276(5321):2045–7. [PubMed: 9197268]
37. Singleton AB, et al. alpha-Synuclein locus triplication causes Parkinson's disease. *Science*. 2003; 302(5646):841. [PubMed: 14593171]
38. Teoh CY, Davies KJ. Potential roles of protein oxidation and the immunoproteasome in MHC class I antigen presentation: the 'PrOxI' hypothesis. *Arch Biochem Biophys*. 2004; 423:88–96. [PubMed: 14871471]
39. Fahn S, Sulzer D. Neurodegeneration and neuroprotection in Parkinson disease. *NeuroRx*. 2004; 1(1):139–54. [PubMed: 15717014]
40. Conway KA, Rochet JC, Bieganski RM, Lansbury PT Jr. Kinetic stabilization of the alpha-synuclein protofibril by a dopamine-alpha-synuclein adduct. *Science*. 2001; 294(5545):1346–9. [PubMed: 11701929]
41. Norris EH, et al. Reversible inhibition of alpha-synuclein fibrillization by dopaminochrome-mediated conformational alterations. *J Biol Chem*. 2005; 280(22):21212–9. [PubMed: 15817478]
42. Martinez-Vicente M, et al. Dopamine-modified alpha-synuclein blocks chaperone-mediated autophagy. *J Clin Invest*. 2008; 118:777–788. [PubMed: 18172548]
43. Muñoz P, Huenchuguala S, Paris I, Segura-Aguilar J. Dopamine oxidation and autophagy. *Parkinsons Dis*. 2012; 2012:920953.10.1155/2012/920953 [PubMed: 22966478]
44. Mosharov EV, et al. Interplay between cytosolic dopamine, calcium, and alpha-synuclein causes selective death of substantia nigra neurons. *Neuron*. 2009; 30:218–229. [PubMed: 19409267]
45. Pardo B, Mena MA, Casarejos MJ, Paño CL, De Yébenes JG. Toxic effects of L-DOPA on mesencephalic cell cultures: protection with antioxidants. *Brain Res*. 1995; 682(1–2):133–43. [PubMed: 7552304]
46. Falk K, et al. Both human and mouse cells expressing H-2Kb and ovalbumin process the same peptide, SIINFEKL. *Cell Immunol*. 1993; 150(2):447–52. [PubMed: 8370082]
47. Budhu S, et al. CD8+ T cell concentration determines their efficiency in killing cognate antigen-expressing syngeneic mammalian cells in vitro and in mouse tissues. *J Exp Med*. 2010; 207:223–235. [PubMed: 20065066]
48. Marsh SG, et al. Nomenclature for factors of the HLA system. *Tissue Antigens*. 2005; 65:301–69. [PubMed: 15787720]
49. Chan CS, Gertler TS, Surmeier DJ. Calcium homeostasis, selective vulnerability and Parkinson's disease. *Trends Neurosci*. 2009; 32:249–256. [PubMed: 19307031]
50. Kleijmeer MJ, et al. Antigen loading of MHC class I molecules in the endocytic tract. *Traffic*. 2001; 2:124–137. [PubMed: 11247303]
51. Fiegl D, et al. Amphisomal route of MHC class I cross-presentation in bacteria-infected dendritic cells. *J Immunol*. 2013; 190(6):2791–806. [PubMed: 23418629]
52. Zhang W, et al. Human neuromelanin: an endogenous microglial activator for dopaminergic neuron death. *Front Biosci (Elite Ed)*. 2013; 5:1–11. [PubMed: 23276965]
53. Béraud D, et al. Microglial activation and antioxidant responses induced by the Parkinson's disease protein α -synuclein. *J Neuroimmune Pharmacol*. 2013; 8(1):94–117. [PubMed: 23054368]
54. Block ML, Zecca L, Hong JS. Microglia-mediated neurotoxicity: uncovering the molecular mechanisms. *Nat Rev Neurosci*. 2007; 8(1):57–69. [PubMed: 17180163]
55. Lull ME, Block ML. Microglial activation and chronic neurodegeneration. *Neurotherapeutics*. 2010; 7(4):354–65. [PubMed: 20880500]
56. Zhao YN, Wang F, Fan YX, Ping GF, Yang JY, Wu CF. Activated microglia are implicated in cognitive deficits, neuronal death, and successful recovery following intermittent ethanol exposure. *Behav Brain Res*. 2013; 236(1):270–82. [PubMed: 22985845]

57. Double KL. Neuronal vulnerability in Parkinson's disease. *Parkinsonism Relat Disord.* 2012; 18 (Suppl 1):S52–4. [PubMed: 22166454]
58. Harris TH, et al. Generalized Lévy walks and the role of chemokines in migration of effector CD8+ T cells. *Nature.* 2012; 486:545–8. [PubMed: 22722867]
59. German DC, Eagar T, Sonsalla PK. Parkinson's Disease: A Role for the Immune System. *Curr Mol Pharmacol.* 2011 In press.
60. Farkas E, De Jong GI, de Vos RA, Jansen Steur EN, Luiten PG. Pathological features of cerebral cortical capillaries are doubled in Alzheimer's disease and Parkinson's disease. *Acta Neuropathol.* 2000; 100(4):395–402. [PubMed: 10985698]
61. Abraham S, Nagaraj AS, Basak S, Manjunath R. Japanese encephalitis virus utilizes the canonical pathway to activate NF-kappaB but it utilizes the type I interferon pathway to induce major histocompatibility complex class I expression in mouse embryonic fibroblasts. *J Virol.* 2010; 84:5485–93. [PubMed: 20357096]
62. Mangano EN, et al. Interferon- γ plays a role in paraquat-induced neurodegeneration involving oxidative and proinflammatory pathways. *Neurobiol Aging.* 2011; 33(7):1411–26. [PubMed: 21482445]
63. Chakrabarty P, et al. Interferon- γ induces progressive nigrostriatal degeneration and basal ganglia calcification. *Nat Neurosci.* 2011; 14:694–696. [PubMed: 21572432]
64. Almeida CM, Galvão M, de L, Ferreira PL, Braga WS. Interferon-induced Parkinsonism in a patient with chronic hepatitis C. *Arq Neuropsiquiatr.* 2009; 67:715–6. [PubMed: 19722060]
65. Zecca L, et al. The role of iron and copper molecules in the neuronal vulnerability of locus coeruleus and substantia nigra during aging. *Proc Natl Acad Sci U S A.* 2004; 101(26):9843–8. [PubMed: 15210960]
66. Gentleman RC, et al. J. Bioconductor: open software development for computational biology and bioinformatics. *Genome Biol.* 2004; 5:R80. [PubMed: 15461798]
67. Simunovic F, et al. Gene expression profiling of substantia nigra dopamine neurons: further insights into Parkinson's disease pathology. *Brain.* 2009; 132:1795–1809. [PubMed: 19052140]
68. Rothenberg BE, Voland JR. beta2 knockout mice develop parenchymal iron overload: A putative role for class I genes of the major histocompatibility complex in iron metabolism. *Proc Natl Acad Sci U S A.* 1996; 93:1529–34. [PubMed: 8643666]
69. Tallóczy Z, et al. Methamphetamine inhibits antigen processing, presentation, and phagocytosis. *PLoS Pathog.* 2008; 4:e28. [PubMed: 18282092]
70. Hogquist KA, et al. T cell receptor antagonist peptides induce positive selection. *Cell.* 1994; 76:17–27. [PubMed: 8287475]



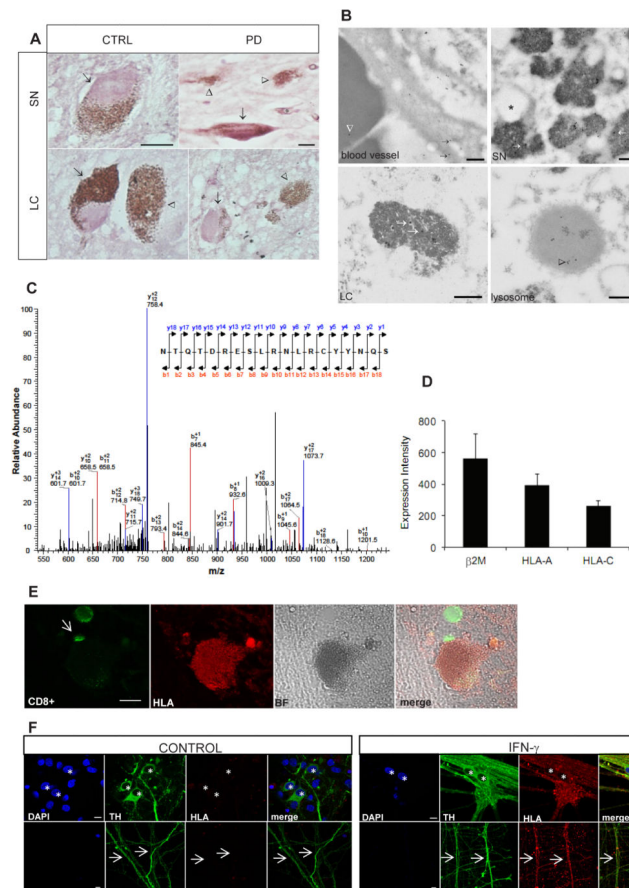


Figure 2. Human SN and LC express MHC-I with local CTLs

A) V-VIP immunostain (purple) indicates HLA (A, B and C) in control and PD SN and LC samples. NM appears as brown precipitate. Arrows indicate labeled cells in which the chromogen fills and outlines cell bodies and occasional dendrites. The arrowhead indicates a NM⁺ neuron devoid of cytosolic immunocytochemical label. Scale = 50 μ m. **B)** Immunoelectron microscopy images demonstrating antigenicity to HLA (A, B and C) within NM granules of control SN and LC (white arrows). Blood vessel endothelium was used as a positive control for the HLA antibody and showed immunolabel (black arrows); the erythrocyte showed very little staining (white outlined arrowhead). Lipid bodies (asterisk) within NM organelles did not exhibit HLA immunolabel. The black outlined arrowhead depicts a lysosome with HLA label in an LC neuron. Scale = 250 nm. **C)** MS/MS spectrum (parent ion m/z 788.2=[M+3H⁺]₃⁺) corresponding to the peptide NTQTDRESLRNLRRCYYNQS observed in the analysis of NM isolated from SN tissue. See Table 1 for details. **D)** β 2m, HLA-A, and HLA-C genes are robustly expressed in laser-captured NM SN neurons of control individuals. Data are presented as the mean \pm SEM. Samples from 17 control subjects were analyzed. **E)** Double immunofluorescence in the SN of human of a postmortem control sample. NM was observed under brightfield microscopy. An arrow indicates a CD8⁺ T-cell in contact with a NM⁺ neuron. Scale = 10 μ m. **F)** Immunofluorescence in hES derived DA neurons, showing HLA (A, B and C) immunolabel in the cell body (upper panel) and dendrites (lower panel) of TH⁺ neurons exposed to human

IFN- γ , but not in neurons treated with the vehicle. Asterisks indicate cell bodies and arrows point at dendrites. Scale = 10 μ m. Each experiment was repeated at least in triplicate, and within each experiment, each condition was also performed at least three times. BF = brightfield; CTRL = control.

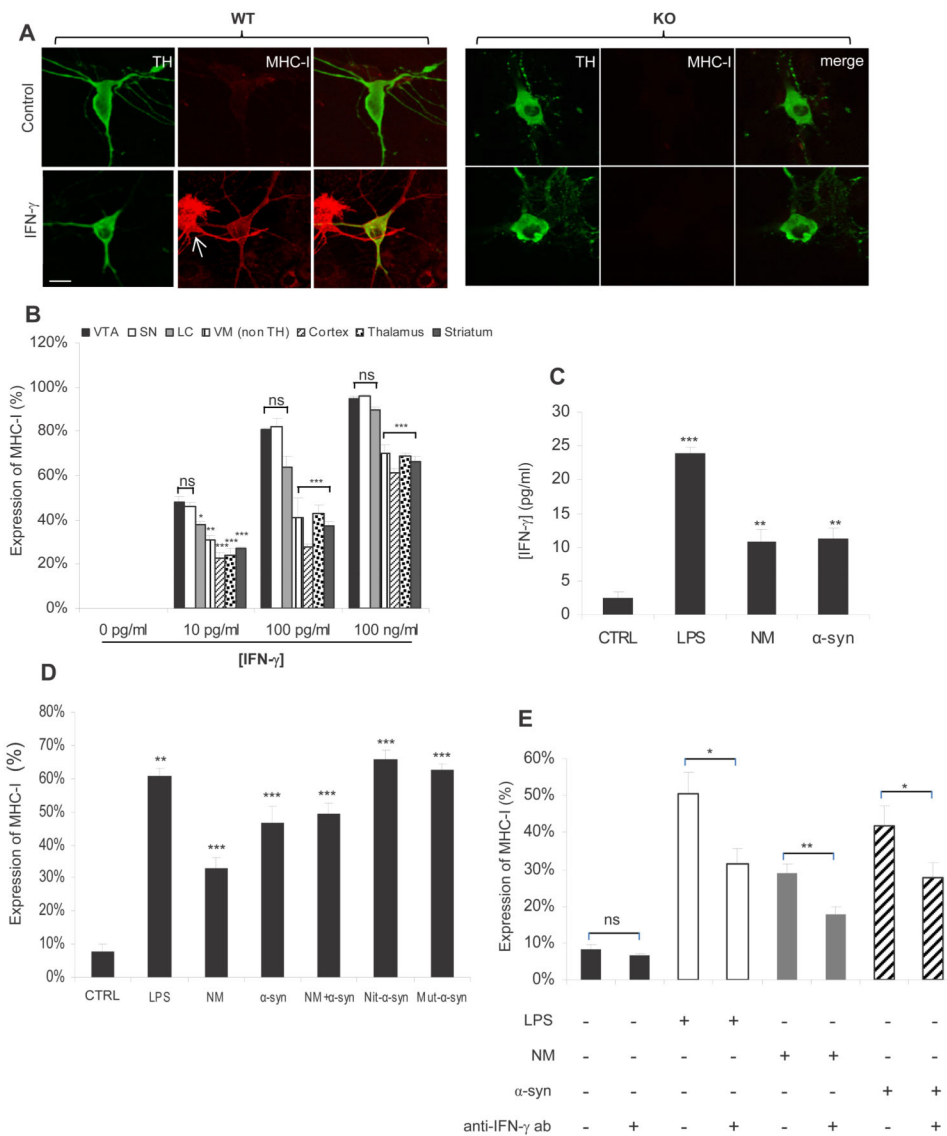


Figure 3. Induced MHC-I by murine catecholamine neurons

A) MHC-I immunolabel in postnatally-derived cultured SN DA neurons from wild type and $\beta 2m$ KO mice imaged by confocal microscopy. The upper row shows untreated DA (TH: green) neurons. The bottom row shows MHC-I (red) expressing DA neurons exposed to IFN- γ . The arrow indicates a MHC-I expressing astrocyte (bottom row). Scale = 30 μ m. **B)** Dose response of MHC-I induction by IFN- γ in neurons obtained from various brain regions. Data are presented as the mean \pm SEM (ns = nonsignificant; ** $p < 0.01$; *** $p < 0.001$, Two-way ANOVA test). **C)** IFN- γ released by microglia stimulated with LPS, NM or α -syn. Data are presented as the mean \pm SEM (** $p < 0.01$; *** $p < 0.001$, One-way ANOVA with Tukey post-hoc test). **D)** Expression of MHC-I after exposing primary VM neurons to medium from microglia pre-stimulated with LPS, NM or α -syn (wild type, nitrated or A53T mutant). Data are presented as the mean \pm SEM (* $p < 0.05$; ** $p < 0.01$; *** $p < 0.001$, One-way ANOVA with Tukey post-hoc test). **E)** Percentage of VM neurons that expressed MHC-I after exposure to microglial conditioned as in **C)**, with or without a

neutralizing antibody for IFN- γ . Data are presented as the mean \pm SEM (ns = nonsignificant; * $p < 0.05$; ** $p < 0.01$, two-tailed Student's T-test). Each experiment was repeated at least in triplicate, and within each experiment, each condition was also performed at least three times. For each condition, neurons on $n = 24$ fields at 20X were quantified. ab = antibody; CTRL = control; ns = nonsignificant; WT = wild type.

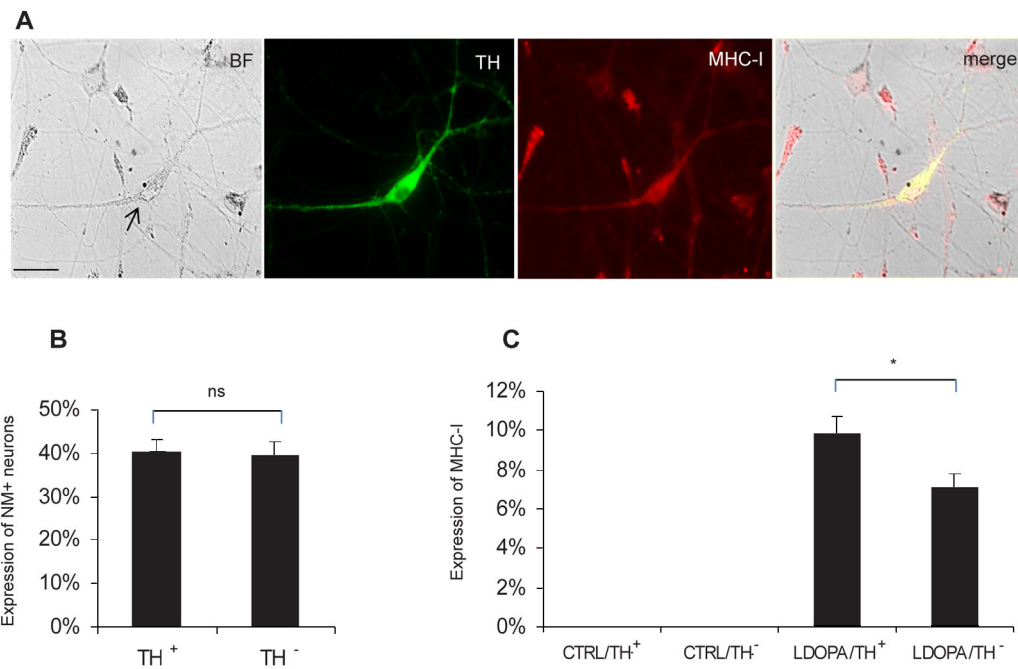


Figure 4. MHC-I induction in VM DA neurons is dependent on oxidative stress

A) Example of TH/MHC-I double immunolabel of primary cultures of VM neurons after treatment with L-DOPA, which induced the presence of both NM (arrow) and MHC-I. Scale = 30 μ m. **B)** Fraction of TH⁺ and TH⁻ neurons that displayed NM following L-DOPA. Data are presented as mean \pm SEM (ns = nonsignificant, two-tailed Student's T-test). **C)** The fraction of TH⁺ and TH⁻ neurons that displayed plasma membrane MHC-I following L-DOPA. Data are presented as mean \pm SEM (* $p < 0.05$, two-tailed Student's T-test). Each experiment was repeated at least in triplicate and within each experiment, each condition was also performed at least three times. For each condition, neurons on $n = 24$ fields at 20X were quantified. BF = brightfield; CTRL = control.

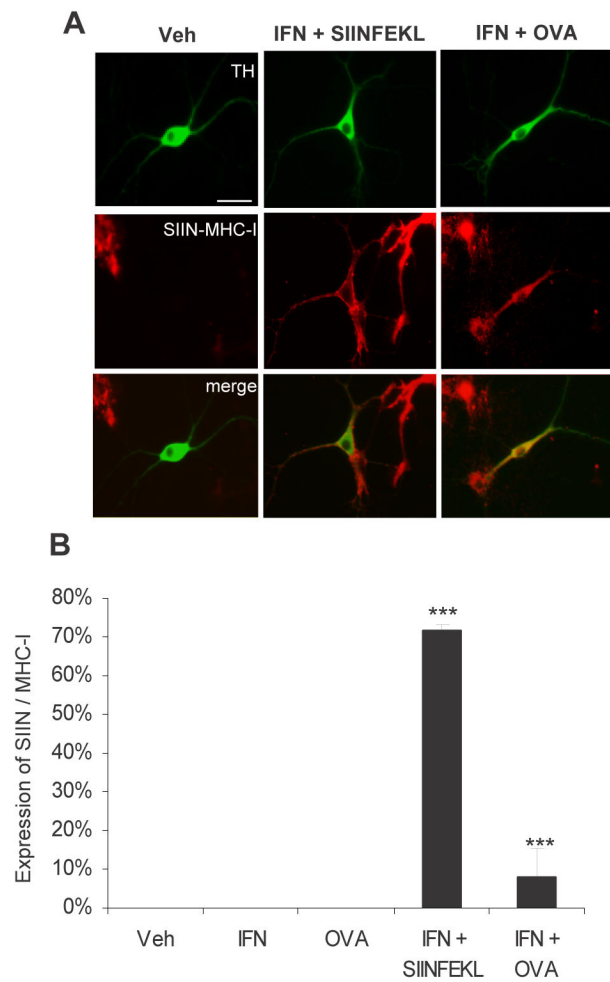


Figure 5. VM DA neurons load and display antigen

A) VM DA neurons immunolabeled for TH and SIINFEKL-MHC-I. **B)** The fraction of TH⁺ neurons that were labeled for SIINFEKL-MHC-I following vehicle, IFN- γ , OVA, IFN- γ + SIINFEKL, and IFN- γ + OVA. Data are presented as the mean \pm SEM (***) $p < 0.001$, One-way ANOVA with Tukey post-hoc test). Each experiment was repeated at least in triplicate and within each experiment, each condition was also performed at least three times. For each condition, neurons on $n = 24$ fields at 20X were quantified. Scale = 30 μ m. IFN = interferon gamma; SIIN = SIINFEKL; Veh = vehicle.

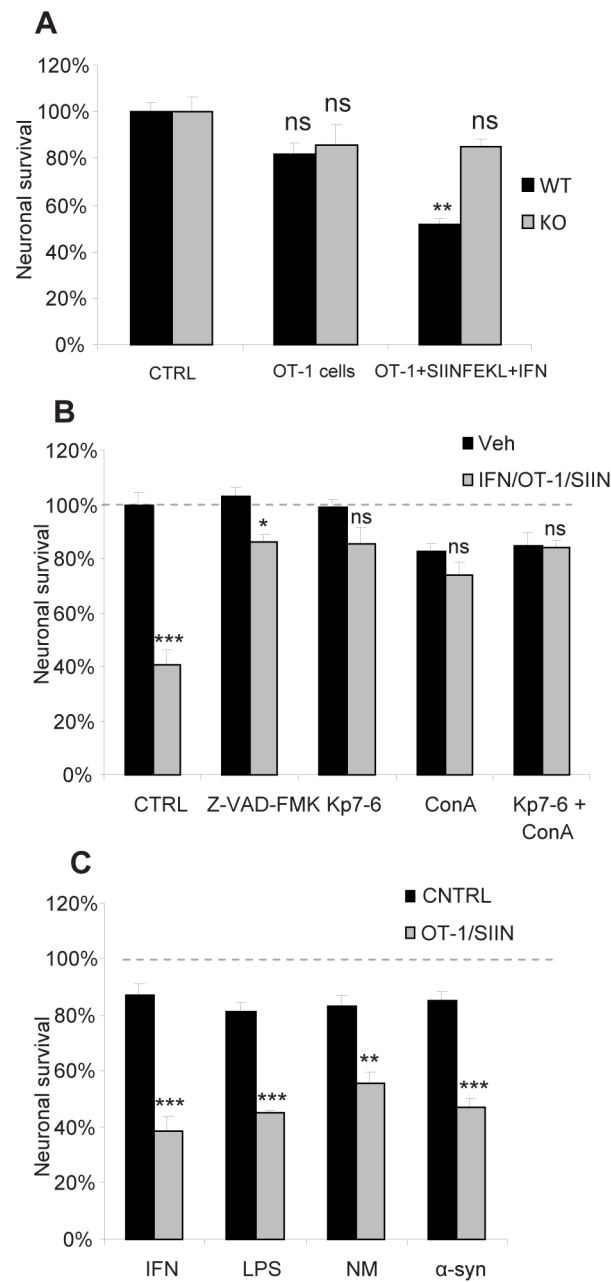


Figure 6. VM DA neurons that display antigen are killed by CD8+ T cells

A) The fraction of VM DA neurons surviving in the presence of SIINFEKL, OT-1 cells pre-pulsed with SIINFEKL, and IFN- γ (100 ng/ml) in cultures obtained from wild type and β 2m KO mice. Data are presented as the mean \pm SEM (ns = non significant; ** $p < 0.01$, One-way ANOVA with Tukey post-hoc test). **B)** Survival of VM DA neurons incubated with IFN- γ , SIINFEKL peptide, and OT-1 cells with the pan-caspase inhibitor Z-VAD-FMK, the Fas/Fas ligand antagonist, Kp7-6, the perforin/granzyme antagonist, concanamycin A, or the combination of Kp7-6 and concanamycin A. Data are presented as the mean \pm SEM (ns = non significant; * $p < 0.05$, *** $p < 0.001$, One-way ANOVA with Tukey post-hoc test). **C)** VM DA neuron survival with SIINFEKL, OT-1 cells pre-pulsed

with SIINFEKL, and microglial medium previously exposed to LPS, α -syn or NM. Data are presented as the mean \pm SEM (ns = non significant; * $p < 0.05$, ** $p < 0.01$; *** $p < 0.001$, One-way ANOVA with Tukey post-hoc test). Each experiment was repeated at least in triplicate and within each experiment, each condition was also performed at least three times. For each condition, neurons on $n = 24$ fields at 20X were quantified. ConA = concanamycin A; CTRL = control; IFN = interferon gamma; ns = non significant; SIIN = SIINFEKL; Veh = vehicle.

Table 1
MHC-I peptides associated with NM and identified by mass spectrometry analysis of samples isolated from human SN

NM-Organelles 1 and NM-Organelles 2 were prepared from two different individuals. NM isolated from SN tissues was isolated from a pool of SN samples obtained from five individuals. Another NM sample was isolated from NM organelles prepared from one individual. For each peptide the corresponding gene(s) and the number of different alleles that may encode the peptide is reported.

Sample type	# Peptide	Number of MHC-I sequences containing the peptide	HLA gene	Alleles encoding the peptide	Accession number (European Nucleotide Archive)
NM-Organelles 1 (1 subject)	1 YWDLQTRNVKAHSQTDR	2	HLA-A	HLA-A*43:01 HLA-A*29:20	X61703 FJ222559
	2 RNTQIFKINTQTHRENLRALRY	1	HLA-B	HLA-B*51:52	AM906166
	3 FLPTGGKGGSCSQAAS	5	HLA-C	HLA-C*03:04:01:01 HLA-C*05:01:01:02 HLA-C*06:02:01:01 HLA-C*16:01:01 n.d.	CR759828 BX248310 CR388229 BX927178 BC008457
	4 QRMPEPAPWIEQERPAYW	1	HLA-A	HLA-A*31:22	EU580147
	5 VYSRHPAENGKSNFLNCYVSGFHPSDIE	5	B2M (Beta-2-microglobulin)	not HLA gene	-
	6 PDGRLLRGYQQDAYDYG	105	HLA-A/HLA-B	This peptide can be encoded by the allele HLA-B*74:11 (accession number: DQ888175) and by 104 alleles belonging to HLA-A*74 and HLA-A*32 allele families	
NM-Organelles 2 (1 subject)	1 GHVIRGVAPQIPGERE ^(a)	9	HLA-A	HLA-A*02:20:02 HLA-A*02:08 n.d. n.d. HLA-A*02:17:01 HLA-A*02:01:01:01/HLA-H*01:01:01:01/HLA-K*01:02 HLA-A*02:250N HLA-A*2 ^{new} HLA-A*68:13	AJ276069 X94571 AJ429615 AY918166 X89707 CR388220 FN806794 AM905047 AM072964
	2 HQAQVGGPGCGGAVESLPGGHVIRG ^(b)	9	HLA-A	The same of above	
	3 FLPTGGKGGSCSQAAS	5	HLA-C	HLA-C*03:04:01:01 HLA-C*05:01:01:02 HLA-C*06:02:01:01 HLA-C*16:01:01 n.d.	CR759828 BX248310 CR388229 BX927178 BC008457
	1 RKLEAAGVAEQRAYLEGEVCV	1	HLA-B	HLA-B*40:67	AB257503
	2 DVGSDGRFLR	> 1000	HLA-A	This peptide can be encoded by > 1000 different alleles of HLA-A gene	

Sample type	# Peptide	Number of MHC-I sequences containing the peptide	HLA gene	Alleles encoding the peptide	Accession number (European Nucleotide Archive)
	3 NTQTDRESLRNLRCCYNNQS	1	HLA-B	HLA-B*08:34	AM778129
	4 SLPGRVRGVAPQIPGE	1	HLA-B	HLA-B*27:12	Y14582
	5 KWEAARVAEQLRAYLEGLCVWEWLRRH	27	HLA-B	This peptide can be encoded by 27 alleles belonging to HLA-B*15, B*35, B*51, B*52, B*57, B*58 alleles families	
	6 DRETRDLTGNGKD	56	MICA & PERB11.1 ^(‡)	MICA*001	
	7 LSSWTAADTAAQTQRKLEAA	4	HLA-B / HLA-C	HLA-B*40:77 HLA-B*48new HLA-C*07:168 HLA-C*07:81	EF521874 DQ238865 HQ589100 F1618920
	8 ILRWEPSSQPTPIVGHAGLVL	1	HLA-A	HLA-A*02:134	AM746482
NM isolated from NM Organelles (1 subject)	1 GHVRGVAPQIPGERE ^(a)	9	HLA-A	HLA-A*02:20:02 HLA-A*02:08 n.d.	AJ276069 X94571 AJ429615 AY918166 X89707
	2 HQAQGGGPCGGAVESLPGGHVRG ^(b)	9	HLA-A	n.d. HLA-A*02:17:01 HLA-A*02:01:01:01/HLA-H*01:01:01:01/HLA-K*01:02 HLA-A*02:250N HLA-A*2new HLA-A*68:13	CR388220 FN806794 AM905047 AM072964
	3 FLPTGGKGGSCSQAAS ^(c)	5	HLA-C	The same of above HLA-C*03:04:01:01 HLA-C*05:01:01:02 HLA-C*06:02:01:01 HLA-C*16:01:01 n.d.	CR759828 BX248310 CR388229 BX927178 BC008457
	4 FLPTGGKGGSCSQAASSNAQGS ^(d)	5	HLA-C	The same of above	

(n.d.): the nucleotide sequence of this allele corresponds to a HLA gene but is not deposited in the IMGT/HLA Alleles Database (<http://www.ebi.ac.uk/ipd/imgt/hla/>).

(a, b, c, d): Both peptides (a) and (b) are components of 9 different MHC-I proteins. In our samples from 1 to 9 of these different MHC-I proteins can be present. Both peptides (c) and (d) are components of 5 different MHC-I proteins. In our sample from 1 to 5 of these different MHC-I proteins can be present.

[‡]MICA & PERB11.1 are HLA related genes.