



DIGITAL ACCESS TO SCHOLARSHIP AT HARVARD

Identification of ROCK1 kinase as a critical regulator of Beclin1 mediated autophagy during metabolic stress

The Harvard community has made this article openly available.
[Please share](#) how this access benefits you. Your story matters.

Citation	Gurkar, Aditi U., Kiki Chu, Lakshmi Raj, Richard Bouley, Seung-Hwan Lee, Young-Bum Kim, Sandra E. Dunn, Anna Mandinova, and Sam W. Lee. 2013. "Identification of ROCK1 kinase as a critical regulator of Beclin1 mediated autophagy during metabolic stress." Nature communications 4 (1): 2189. doi:10.1038/ncomms3189. http://dx.doi.org/10.1038/ncomms3189 .
Published Version	doi:10.1038/ncomms3189
Accessed	April 17, 2018 4:48:48 PM EDT
Citable Link	http://nrs.harvard.edu/urn-3:HUL.InstRepos:11879651
Terms of Use	This article was downloaded from Harvard University's DASH repository, and is made available under the terms and conditions applicable to Other Posted Material, as set forth at http://nrs.harvard.edu/urn-3:HUL.InstRepos:dash.current.terms-of-use#LAA

(Article begins on next page)

Published in final edited form as:

Nat Commun. 2013 July 23; 4: 2189. doi:10.1038/ncomms3189.

Identification of ROCK1 kinase as a critical regulator of Beclin1 mediated autophagy during metabolic stress

Aditi U. Gurkar¹, Kiki Chu¹, Lakshmi Raj¹, Richard Bouley², Seung-Hwan Lee³, Young-Bum Kim³, Sandra E. Dunn⁴, Anna Mandinova^{1,5,*}, and Sam W. Lee^{1,5,*}

¹Cutaneous Biology Research Center, Massachusetts General Hospital and Harvard Medical School, Building 149 13th Street, Charlestown, Massachusetts 02129, USA

²Division of Nephrology, Simches Research Center, Massachusetts General Hospital, 185 Cambridge Street, Boston, MA 02114, USA

³Division of Endocrinology, Diabetes, and Metabolism, Beth Israel Deaconess Medical Center and Harvard Medical School, Boston, Massachusetts 02215, USA

⁴Department of Pediatrics, University of British Columbia, Vancouver, British Columbia, Canada

⁵Broad Institute of Harvard and MIT, 7 Cambridge Center, Massachusetts 02142, USA

Abstract

The Ser/Thr Rho kinase 1 (ROCK1) is known to play major roles in a wide range of cellular activities, including those involved in tumor metastasis and apoptosis. Here we identify an indispensable function of ROCK1 in metabolic stress-induced autophagy. Applying a proteomics approach, we characterize Beclin1, a proximal component of the PI(3)kinase class III lipid-kinase complex that induces autophagy, as an interacting partner of ROCK1. Upon nutrient deprivation, activated ROCK1 promotes autophagy by binding and phosphorylating Beclin1 at Thr119. This results in the specific dissociation of the Beclin1-Bcl-2 complex, without affecting the Beclin1-UVRAG interaction. Conversely, inhibition of ROCK1 activity increases Beclin1-Bcl-2 association, thus reducing nutritional stress-mediated autophagy. Genetic knockout of ROCK1 function in mice also leads to impaired autophagy as evidenced by reduced autophagosome formation. These results show that ROCK1 acts as a prominent upstream regulator of Beclin1-mediated autophagy and maintains a homeostatic balance between apoptosis and autophagy.

Rho kinases, ROCKs, are serine/threonine kinases that were initially identified as activated Rho (Rho-GTP) interacting proteins¹. ROCKs function as versatile kinases, phosphorylating various substrates such as myosin light chain (MLC) phosphatase, LIM kinase, PTEN, insulin receptor substrate (IRS), ezrin/radixin/moesin (ERM) proteins, and JNK interacting protein (JIP-3)²⁻⁶. Two ROCK isoforms exist—ROCK1 (ROK β) and ROCK2 (ROK α). Both isoforms consist of a N-terminal kinase domain, a coiled-coil region consisting of a Rho binding domain (RBD), a pleckstrin homology domain (PH) and a cysteine rich domain

*To whom correspondence should be addressed to S.W.L. swlee@partners.org.

Author contributions

A.U.G. performed and analyzed most of the experiments and data, and wrote the manuscript. K.C. performed some of the experiments and contributed to the writing of the manuscript. R.B. performed the FRET experiments and helped the analysis of the data. L.R. and S.H.L. helped out with animal experiments. A.M. and S.W.L. designed the proteomics experiments and analyzed the data. Y.B.K. contributed to the generation of ROCK-null mice. A.M., S.E.D. and S.W.L. designed experiments, analyzed the data and wrote the paper.

Competing financial interests

The authors declare no competing financial interests.

(CRD). The isoforms share 92% homology in their kinase domain and phosphorylate a consensus motif R/KXS/T or R/KXXS/T². These enzymes play a role in varied cellular processes including cell-cell adhesion, migration, invasion, transformation, mitosis, DNA-damage and apoptosis^{2,5,7,8}. In addition, accumulating evidence strongly suggests a role of ROCK in glucose metabolism^{4,6,9}, although the exact mechanisms involved remain to be elucidated.

A highly conserved, regulated process of self-cannibalization to maintain cellular homeostasis and regain energy is termed ‘autophagy’. Autophagy occurs under basal conditions, for example to degrade long-lived proteins, but is mainly induced in response to stress^{10,11}. Under stress, such as an infection, autophagy is known to target pathogens to lysosomal degradation^{12,13}. Conversely, during metabolic stress, autophagy provides ATP for cellular activity and preserves cell viability^{14,15}. Metabolic stress is common in cancer cells that have outgrown their nutrient supply because proliferation outpaces angiogenesis which provides nutrients. Under such harsh conditions, cancer cells must adapt, and they do so by inducing autophagy, a process whereby the cells “self-eat” and also protect themselves from cell death. Autophagy, characterized by the formation of autophagosomes, is an orchestrated process involving several steps: initiation, nucleation, elongation, maturation and degradation. At least 15 different proteins are involved in the formation of autophagosomes¹³.

Beclin1 (ATG6) is a well-conserved protein and plays a central role during the autophagy process. Beclin1 was initially identified as the anti-apoptotic protein, Bcl-2, interacting partner^{16–18}. During non-stress, normal conditions, Bcl-2 binds Beclin1 and inhibits autophagosome formation. However, upon starvation, Beclin1 is released from Bcl-2 and can then proceed to perform its function in autophagy^{19,20}. In addition, Beclin1 forms a multiprotein complex with PI(3)KC3 (Vps34) and UVRAG, a coiled-coil, UV irradiation resistance-associated gene, to induce autophagosome formation²¹.

Beclin1 null mice are embryonic lethal, and Beclin1 heterozygous mice show a higher incidence of spontaneous tumor development²². Also, Beclin1 is known to be deleted/underexpressed in several types of cancers, including breast and ovarian^{23,24}. Recently, it was reported that Beclin1, as well as UVRAG, are mutated in cancer cells with microsatellite instability^{25,26}. These observations suggest a crucial role of Beclin1 during autophagy and tumor suppression. Related to this, ROCK1 overexpression has also been observed in a number of cancers and is associated with poor prognosis^{27–29}. Furthermore, activating ROCK1 somatic mutations were identified in human cancers³⁰. Interestingly, ROCK is known to play a major role in degradation of mutant Huntington protein via proteasome degradation and autophagy³¹. In addition, a recent report suggests a role of ROCK in autophagosome size regulation³².

Here we identify Beclin1 as a novel ROCK1 substrate that is phosphorylated during metabolic stress. We further show that ROCK1 phosphorylates Beclin1 in its BH3 domain, allowing for Bcl-2 dissociation during nutrient stress to induce autophagy. Inhibition of ROCK1 activity leads to autophagy impairment, causing cell death in glucose starved cancer cells. Thus, our findings identify ROCK1 as a critical regulator of metabolic stress signaling and provide new insights into its role in autophagy.

Results

Identification of Beclin1 as a ROCK1 binding partner

Since we hypothesized that ROCK1 may play a key role during nutrient stress, we performed co-immunoprecipitation-mass spectrometry (MS) study to identify ROCK1

interacting proteins. Endogenous ROCK1 was immunoprecipitated from HeLa cells incubated in normal (DMEM) or HBSS (starvation) media, and the resulting precipitates were subjected to LC-MS/MS analysis. Several proteins, including Beclin1, PKM2, XRCC6 and STK38, were identified as putative binding partners of ROCK1 under nutrient stress conditions (Fig. 1a Supplementary Table S1). Moreover, upon starvation, the abundance of both Beclin1 and ROCK1 increased in the 20,000g fraction (corresponding to ER/mitochondria) and in the 100,000g fraction (cytosol) (Supplementary Fig. S1a). To confirm the MS results, co-immunoprecipitation experiments were performed in both HeLa (Fig. 1a, right panel) and 293T (Fig. 1b) cells under normal (high glucose) and starved (HBSS) conditions. The interaction of Beclin1 with ROCK1 observed under normal (high glucose) conditions increased significantly during HBSS treatment. To further confirm Beclin1 interaction with ROCK1 during metabolic stress, live-cell imaging and FRET was performed. Upon addition of HBSS, N-terminal YFP-tagged ROCK1 associated with CFP-tagged Beclin1 (Fig. 1c). Additionally, confocal analysis showed that Beclin1 exhibited a diffuse cytoplasmic pattern and did not appear to co-localize with ROCK1 in the presence of glucose. However, when the cells were starved, Beclin1 translocated to the perinuclear region and was observed in close proximity to ROCK1 (Supplementary Fig. S1b). All of these results suggested that ROCK1 interacts with Beclin1 in response to nutrient starvation.

ROCK1 activity is essential for interaction with Beclin1

To determine whether ROCK1 activity was necessary for Beclin1 interaction, cells were treated with a well-established Rho kinase inhibitor, Y27632, and endogenous ROCK1 or Beclin1 was pulled down in the presence or absence of HBSS. Similar to results in Fig. 1a and 1b, Beclin1 binding to ROCK1 increased upon starvation in non-treated cells (Fig. 2a). However, in Y27632-treated cells, this interaction was significantly decreased. This result suggests that ROCK1 activity is needed for Beclin1 interaction. To test whether ROCK1 activity increased upon glucose starvation, we performed an *in vitro* kinase assay with ROCK1 immunoprecipitated from HeLa and EJ cells grown in the presence of HBSS for various time points utilizing MYPT1, a known substrate of ROCK1. As shown in Fig. 2b, ROCK1 from starved cells was able to phosphorylate MYPT1 efficiently as compared to ROCK1 from control cells (non-starved). Moreover, endogenous ROCK activity was upregulated upon starvation as seen by increase in P-MYPT1 (Fig. 2c). Also, ROCK activity increased significantly upon metabolic stress in cancer and non-cancer cell lines, as observed by ELISA assay, using MYPT1 as a substrate (Fig. 2d Supplementary Fig. S2). Next, to examine whether increase in ROCK1 activity depended on Beclin1 interaction, we determined ROCK1 activity in Beclin1 knockdown cells upon starvation. As shown in Fig. 2e (left panel), Beclin1 was efficiently knocked down in HeLa cells; however, there was no down regulation of ROCK activity. This data suggests that Beclin1 interaction with ROCK1 is downstream of increase in ROCK activity.

ROCK1 was initially identified as an effector of RhoA-GTPase and is activated by RhoA-GTP under several conditions^{1,33}. To determine, whether increased ROCK1 activity upon metabolic stress is due to RhoA-GTP, we performed active RhoA assay. Rhotekin binding assay was performed using cell lysates from HeLa cells incubated in DMEM or HBSS. We did not observe an increase in active RhoA upon metabolic stress, suggesting that increase in ROCK1 activity was independent of RhoA (Supplementary Fig. S3a). ROCK1 cleavage and activation by caspase-3 has been well documented under certain stress conditions³⁴. However, no significant ROCK1 cleavage was observed during nutritional stress (Fig. 2c). Another family of Rho-GTPase, RhoE, is also known to regulate ROCK1 activity³⁵. Therefore, we examined RhoE levels upon glucose starvation. As shown in Supplementary Fig. S3b, RhoE was upregulated in starved HeLa cells. To determine whether ROCK1 activity was regulated by RhoE during metabolic stress, we next knocked down RhoE

(Supplementary Fig. S3b) and incubated these cells in DMEM or HBSS media. RhoE knockdown increased ROCK activity upon starvation (Supplementary Fig. S3c), suggesting that RhoE may negatively regulate ROCK1. This result is consistent with previous reports that show RhoE, unlike RhoA, can regulate ROCK1 in a negative manner³⁵. Taken together, these results indicate that the increase of ROCK1 activity upon metabolic stress is independent of RhoA and is required for Beclin1 interaction.

ROCK1 activity is required for starvation-induced autophagy

Since Beclin1 is a proximal component in the autophagy machinery, we examined the role of ROCK1 during nutritional stress-induced autophagy. To do so, we monitored lipidated LC3 (LC3II) levels, which are known to correlate with autophagosome formation³⁶. *ROCK1*^{-/-} MEFs were compared to WT MEFs in HBSS media. Upon starvation, WT MEFs showed an increase in LC3II, as well as an increase in LC3 punctae determined by immunofluorescence (Fig. 3a). However, *ROCK1*^{-/-} MEFs exhibited a significant decrease in LC3 punctae (Fig. 3a), suggesting ROCK1 is essential for efficient autophagy process. Additionally, using shRNA (shROCK1-#1), as well as siROCK1-#2 and siROCK1-#3, we observed specific knockdown of ROCK1 (Fig. 3b), without affecting ROCK2 levels (Supplementary Fig. S4a). Levels of processed LC3 (LC3II) in EJ cells grown in glucose-rich media were low, as compared to cells that were nutrient deprived (HBSS) (Fig. 3b, left panel). Conversely, LC3 processing was not observed following nutrient deprivation if ROCK1 was silenced (Fig. 3b, left panel). Similarly, siRNA mediated suppression of ROCK1 in HeLa cells reduced lipidated LC3 levels upon starvation (Fig. 3b, right panel, and Supplementary Fig. S4a). It is known that LC3II on autophagosomes is degraded upon autophagosome and lysosome fusion³⁷. Therefore, to assess autophagic flux, Bafilomycin A1, a drug that inhibits this fusion and thus prevents autophagic vacuole maturation³⁸, was used. As in previous experiments, Y27632 treatment inhibited the accumulation of LC3II upon metabolic stress in HeLa cells (Fig. 3c), in the presence of Bafilomycin A1. Furthermore, p62, a multifunctional adaptor protein that is cleared by autophagy³⁹, accumulated in Y27632 treated cells (Supplementary Fig. S4b). To further examine autophagic flux, we used DQ Red BSA (DQ-BSA), which is labeled with a self-quenched red fluorescent dye and can emit fluorescence upon lysosomal protease cleavage. As shown in Supplementary Fig. S5, we observed a significant increase in dequenched DQ-BSA labeled vesicles co-localizing with GFP-LC3 punctae in control-starved cells, but not in Y27632-treated cells. This suggests that inhibition of ROCK1 suppresses autophagosome formation directly, rather than by interfering with lysosomal activity, thus affecting autophagic flux. We further investigated whether ROCK1 plays a role in autophagy by examining the morphological features of endogenous LC3 (seen as punctae). HeLa cells left untreated or treated with the ROCK inhibitor Y27632 were cultured in HBSS media, and the patterns of LC3 punctae were analyzed by immunofluorescence. Fig. 3d shows an increase in LC3 punctae upon starvation in control cells in the absence of Y27632. However, the addition of Y27632 significantly impaired LC3 punctae formation upon nutrient stress (Fig. 3d). In addition, EJ cells with ROCK1 knockdown and shCont. were stably transfected with GFP-LC3 and subjected to starvation. In shCont. transfected EJ cells, GFP-LC3 punctae were significantly induced upon starvation, indicating upregulated autophagy (Supplementary Fig. S4c). However, in shROCK1#1 cells, GFP-LC3 punctae were markedly decreased under stress conditions (Supplementary Fig. S4c). To further confirm that ROCK1 is required for autophagy, starved EJ cells with shCont. or shROCK1#1 were examined via transmission electron microscopy to detect autophagosome formation (Fig. 3e). Consistent with our evidence that LC3 cleavage is highly compromised in shROCK1 cells, we observed a defect in autophagosome/autolysosome formation in these cells.

Next we investigated whether impaired autophagy due to loss of ROCK1 affected cell viability. Inhibition of ROCK1 activity during starvation resulted in a significantly decreased cell viability (shROCK1 ~1.9 fold; Y27632 ~1.96 fold) as compared to control (glucose fed) HeLa or EJ cells (Supplementary Fig. S6, left panels). In addition, as evidenced by Alamar blue cell death assay (Supplementary Fig. S6a, right panel), ROCK1 stable knockdown in EJ cells led to increased loss in cell viability. Moreover, while TUNEL staining of siCont. transfected HeLa cells after nutrient starvation showed 36.3% positive cells, siROCK1 transfected cells had 90.6% TUNEL positive cells under the same experimental conditions (Supplementary Fig. S6b, right panel). Taken together, these results indicate that ROCK1 activity is essential for functional autophagy and that impairment of ROCK1-mediated autophagy can increase cell death at early time points.

Beclin1 is phosphorylated by ROCK1 at T119

Since ROCK1 is a Ser/Thr kinase and ROCK1 binding to Beclin1 is enhanced upon glucose starvation, we hypothesized that Beclin1 is a direct substrate of ROCK1 in response to nutrient deprivation. To determine whether Beclin1 would be phosphorylated under these conditions, endogenous Beclin1 was immunoprecipitated from fed or starved cells and immunoblotted with anti-phospho Ser/Thr. As shown in Fig. 4a (lane 2), Beclin1 indeed was phosphorylated after glucose starvation, while ROCK inhibitor Y27632 blocked this phosphorylation (lane 4). Similar results were obtained upon ROCK1 knockdown (Supplementary Fig. S7a). The phosphorylation of Flag-tagged Beclin1 purified from HeLa cell extracts or recombinant Beclin1 was measured *in vitro* following incubation with recombinant ROCK1. Full-length recombinant His-Beclin1 (Supplementary Fig. S7b) was phosphorylated by recombinant ROCK1, and this phosphorylation was blocked by Y27632 (Fig. 4b). Similarly, when Flag-Beclin1 purified from HeLa cell extracts was incubated with ROCK1, we observed ROCK1-mediated phosphorylation of Beclin1 as visualized by ³²P autoradiogram. This phosphorylation was a direct result of ROCK1 kinase activity, since the addition of Y27632 significantly inhibited ³²P incorporation. These data suggested that Beclin1 phosphorylation induced by starvation is likely ROCK1 dependent. Next, we prepared a series of partially overlapping Flag fusion fragments of Beclin1 spanning the entire length of the Beclin1 protein. These various Flag-Beclin1 fragments (comprising residues: 1–242, 151–241 and 243–450) were tested as possible substrates for ROCK1 (Fig. 4c). Of the Beclin1 fragments, only Flag-Beclin1 1–242 (comprising the N-terminal 242 aa of Beclin1) was strongly phosphorylated by recombinant ROCK1 (Fig. 4c). Further exploration of Beclin1 1–242 fragment for the consensus sequence of ROCK1 substrate, R/KXS/T or R/KXXS/T, identified several putative ROCK1 phosphorylation sites. Using the Kinexus PhosphoNET kinase predictor (<http://www.phosphonet.ca/kinasepredictor>), potential ROCK1 sites were narrowed down to Ser22, Thr38 and Thr119 (Supplementary Fig. S8). Mutational analyses of ROCK1 consensus sites identified that a mutant form of Flag-Beclin1 1–242, harboring a threonine to alanine substitution at Thr119 (Flag-Beclin1 T119A), was not phosphorylated by ROCK1 (Fig. 4d). To further confirm that endogenous Beclin1 was phosphorylated at T119 and this site phosphorylation depended on ROCK1, we used a phospho-specific antibody against this site. We first confirmed the specificity of this antibody, using Flag-Beclin1 T119A mutant (Fig. 4e). As shown in Fig. 4e, starvation induced Flag-Beclin1 WT phosphorylation at T119, and this stress-induced phosphorylation was decreased upon addition of ROCK inhibitor, Y27632. However, we did not see any phosphorylation of T119A mutant upon starvation. We further confirmed if ROCK1 could phosphorylate endogenous Beclin1 at T119 using Myc-ROCK1 WT, CA (constitutively active) or DN (dominant negative) transfected cells (Supplementary Fig. S9). Endogenous Beclin1 immunoprecipitated from ROCK1 CA transfected cells was highly phosphorylated at T119. In comparison, Beclin1 T119 phosphorylation was significantly suppressed in

ROCK1 DN transfected cells (Supplementary Fig. S9). Thus, these results strongly suggest that ROCK1 can directly phosphorylate Beclin1 at T119 under nutritional stress.

ROCK1 phosphorylates Beclin1 to disrupt Bcl-2 association

T119 lies in the ROCK1 consensus motif and is highly conserved among species (Supplementary Fig. S8). Moreover, it was previously reported that this site resides in the BH3 domain and, therefore, we reasoned that it might contribute to Beclin1-Bcl-2 interaction^{40,41}. To test whether ROCK1 phosphorylation of Beclin1 was indispensable for its dissociation from Bcl-2, we performed immunoprecipitation experiments. Beclin1 binding to Bcl-2 was inhibited upon starvation in HeLa cells, as compared to glucose fed control cells (Fig. 5a). However, Y27632 treatment significantly increased Beclin1 binding to Bcl-2 by approximately 4-fold in high glucose conditions and maintained a similar level of association between Bcl-2 and Beclin1 upon HBSS starvation (Fig. 5a). Similar results were obtained with EJ shCont. and shROCK1 stable transfectants (Fig 5a) and HeLa siCont. and siROCK1#2 (Supplementary Fig. S10b), confirming that ROCK1 was required for Beclin1/Bcl-2 uncoupling for autophagy to proceed during starvation. To determine whether ROCK1 phosphorylation of Beclin1 was necessary for its interaction with other binding partners in the Beclin1-core complex, Vps34 and UVRAG proteins were examined. As shown in Supplementary Fig. S10c, similar levels of Vps34 and UVRAG were pulled down in the presence or absence of Y27632. These results indicate that ROCK1 phosphorylates Beclin1 at Thr119, and this phosphorylation disrupts the Beclin1/Bcl-2 complex without affecting other Beclin1 binding partners, such as Vps34 and UVRAG, during the autophagy process.

To determine whether the loss of phosphorylation at Thr119 could recapitulate inhibition of ROCK1 kinase activity during metabolic stress, we generated and compared Bcl-2 binding activity of WT, T119A (phospho-mutant) and T119E (phospho-mimetic) mutant forms of Beclin1. HeLa cells transfected with a Flag-Beclin1 WT construct in the presence of HBSS showed only slight Bcl-2/Beclin1 interaction (Fig. 5b, lane 1). Furthermore, inhibition of ROCK1 activity by Y27632 significantly increased the binding of Bcl-2 to Beclin1, as expected (Fig. 5b, lane 2). In agreement, Beclin1-T119A mutant pulled down endogenous Bcl-2 upon starvation similar to that of Y27632 treatment (Fig. 5b, lane 3). In contrast, the association of Bcl-2 with the T119E Beclin1 mutant was barely detectable upon nutrient stress, due to a phospho-mimetic effect of the mutant (Fig. 5b, lane 4). To confirm that T119 phosphorylation required for Bcl-2 dissociation was ROCK1 dependent, we examined Bcl-2 association of WT and T119A Beclin1, in the presence and absence of Y27632. As shown in Fig. 5c, Bcl-2 could not dissociate from Beclin1 T119A mutant and this was not further affected by the addition of ROCK inhibitor, Y27632. All of these results indicate that ROCK1 phosphorylation of Beclin1 at Thr119 is important for Bcl-2 dissociation.

To further understand the importance of Beclin1 phosphorylation by ROCK1 in its dissociation from Bcl-2 during autophagy, we knocked down endogenous Beclin1 using siRNA towards the 3'UTR, then ectopically expressed WT and mutant Beclin1 in these cells and examined LC3 processing. Consistent with the previous results, expression of Flag-Beclin1 WT induced higher levels of LC3II upon starvation, and this was inhibited upon Y27632 addition (Fig. 5d). However, Beclin1 T119A mutant transfected cells had very low levels of LC3II upon metabolic stress and was not further affected by Y27632. In addition, WT and mutant transfected cells were subjected to morphological analysis of LC3. Similar to the results from biochemical analysis (Fig. 5), Flag-Beclin1 WT transfected cells were able to induce LC3 punctae upon starvation. In addition, the treatment with Y27632 led to a significant decrease in endogenous LC3II (Fig. 5e). Of note, the Flag-Beclin1 T119A mutant showed impaired LC3 punctae formation, confirming true phospho-mutant activity. Consistently, the Flag-Beclin1 T119E (Supplementary Fig. S11) mutant allowed cells to

accumulate LC3 punctae at the autophagosomes, further confirming that phosphorylation of Beclin1 at Thr119 by ROCK1 is crucial for nutritional deprivation mediated autophagy.

ROCK1 deficiency causes defects in autophagy *in vivo*

To determine whether ROCK1 plays an important role in autophagy *in vivo*, we investigated starvation-induced autophagy in *ROCK1* knockout mice. *ROCK1* knockout mice were generated using the Flp-Cre system (Fig. 6a). The knockout (KO) was confirmed by genotyping and western blot analyses (Fig. 6b, top and bottom panels, respectively). To monitor autophagy, levels of LC3II were evaluated in mice starved for 16 h. In *ROCK1* KO hearts, the level of lipidated LC3 was markedly reduced, as compared to starved Wt mice (Fig. 6c and Supplementary Fig. S12a). In addition, p62/SQSTM1, a scaffold protein known to be ubiquitinated and degraded via autophagy, accumulated at higher levels in *ROCK1* KO hearts (Fig. 6c). As shown in Fig. 6d, it was possible to observe autophagosome structures in Wt starved tissue but not in *ROCK1* KO mice. In addition, when cardiac muscle from starved mice were stained for the presence of endogenous LC3 punctae, there was a significant decrease in LC3 puncta formation in *ROCK1* KO mice (Fig. 6e and Supplementary Fig. S12). Taken together, these results indicate that the loss of ROCK1 substantially impairs autophagy *in vivo*.

Discussion

Using a proteomics approach, we identified Rho kinase1 (ROCK1) as a vital player during nutrient stress-induced autophagy. We showed further that Beclin1, an axial component of the autophagy machinery, is a substrate of ROCK1 when challenged with nutrient deprivation. The anti-apoptotic protein Bcl-2 serves as autophagy regulatory protein through its inhibitory association with Beclin1^{16,19}. Our results show that ROCK1 is activated during metabolic stress, leading to its increased binding and phosphorylation of the Beclin1 BH3 domain. We further demonstrate that metabolic stress-mediated ROCK1 phosphorylation of Beclin1 results in dissociation of Bcl-2 from the Beclin1 multiprotein complex without affecting UVRAG-Beclin1 interactions, and ultimately leads to autophagy (Fig. 7). Consistent with an essential function of ROCK1 during the metabolic stress mediated autophagy process in tissue culture cells, we demonstrated that the loss of ROCK1 function in mice substantially impairs autophagy during fasting.

The function of ROCK1 in membrane blebbing during apoptosis has been studied extensively^{42,43}. We showed that impairment of ROCK1-mediated autophagy could lead to loss of cell viability under conditions of nutritional stress. These results imply that ROCK1 plays additional roles to avoid cell death by providing energy in less severe stressful circumstances. Thus, there appears to be an intricate balance of crosstalk between autophagy and apoptosis that is regulated by ROCK1 (Fig. 7). Recently, other groups have also identified that ROCK1 regulates survival rather than apoptosis, under certain conditions⁴⁴, supporting our results. However, it remains to be determined how ROCK1 kinase is activated under metabolic stress conditions. Several studies have shown that active RhoA-GTP binding to ROCK1 is required for ROCK1 activation^{1,33}. However, we did not observe any increase in RhoA-GTP binding to ROCK1 upon nutritional stress, suggesting that other ROCK1-activating modulator(s), such as RhoE, may play a role.

By mutational analysis, we localized Beclin1 Thr119 as the site of phosphorylation by ROCK1 upon starvation. This site is known to be a ROCK1 consensus motif, which is highly conserved among species, and is localized within the Beclin1 BH3 domain implicated in Bcl-2 binding¹⁶⁻²⁰. We further demonstrated that Beclin1 phosphorylation at T119 by ROCK1 is crucial for the disassociation between Beclin1 and Bcl-2 during the autophagy upon metabolic stress. Recent reports suggest that DAPK (death associated protein kinase)

also promotes autophagy via several different mechanisms^{40,45–47}. DAPK has also been reported to phosphorylate Beclin1 *in vitro* at T119, resulting in the loss of interaction with Bcl-XL, but whether this mechanism is involved in nutritional stress-mediated autophagy has not been determined⁴⁰. It is known that ROCK1 and DAPK share a consensus motif, R/KX/S/T or R/KXXS/T, for target phosphorylation⁴⁸ and share some common substrates, such as ZIPK^{49,50}. Thus, each may phosphorylate Beclin1 under particular conditions. Nonetheless, our results suggest that ROCK1 is the major kinase responsible for phosphorylating Beclin1 at T119 and subsequently promoting the progression of autophagy during starvation.

In this study, ROCK1-mediated phosphorylation of Beclin1 during nutrient stress leads to the induction of autophagy. However, ROCK1 may modulate autophagy through alternate mechanisms during nutrient stress. For example, ROCK1 was previously shown to activate the JNK pathway through JIP-3 phosphorylation⁵, and upon nutrient deprivation, activated JNK phosphorylates Bcl-2, resulting in the dissociation of Bcl-2 from Beclin1 and subsequent activation of autophagy⁵¹. Therefore, ROCK1 may modulate autophagy, not only through Beclin1 phosphorylation but concomitantly through ROCK1-mediated JNK activation, where these two arms essentially disrupt the Beclin1-Bcl-2 association and promote autophagosome formation. Further studies are needed to elucidate additional mechanisms by which ROCK1 regulates autophagy.

ROCK1-induced autophagy may have critical functions in physiological and pathological contexts. Recent data suggests that Bcl-2 regulated autophagy during exercise is necessary to maintain glucose homeostasis in the muscle. However, previously known kinase-phosphorylation of Bcl-2, such as JNK and MAPK, do not seem to play a role in this process⁵². Possibly, ROCK1-mediated phosphorylation of Beclin1, as shown here, could be important for Bcl-2 regulated autophagy during exercise. Although, ROCK1 and Beclin1 are well conserved among species, both genes are mutated in several human cancers^{23,24,27–29}. Activating mutations of ROCK1 suggest a positive role for ROCK1 during cancer progression^{30,44}. Accumulating evidence strongly suggest that autophagy may not only promote cancer cell survival but may also lead to chemoresistance^{53–56}. Since ROCK1 plays a central role in autophagy and may promote cancer progression, inhibiting ROCK1 activity in cancer cells, in addition to chemotherapy, may help improve prognosis for cancer patients. Taken together, our data outlines a novel regulatory mechanism in which ROCK1 plays an essential role during metabolic stress-induced autophagy.

Methods

Cell lines and plasmids

HeLa (human cervical cancer cells), EJ (human bladder cancer cells), 293T (human embryonic kidney cells), and IMR90 (normal human fibroblasts) cells were cultured in DMEM (CellGro) containing 10% fetal bovine serum (FBS) (Invitrogen, CA), 100 U/ml penicillin and 100 µg/ml streptomycin at 37°C. Where indicated the cells were incubated in HBSS (CellGro) containing 10 mM HEPES-KOH (pH7.5).

The cDNA encoding Beclin1 was obtained from Open Biosystems (Clone: 2901072). Full-length Beclin1 (1–242) was then cloned into pcDNA3.1-Flag by PCR, using standard procedure. Mutagenesis in full-length Beclin1 (T119A, T119D and T119E) was performed using the megaprimer method. The obtained clones were sequenced in entirety to ensure no additional mutations were introduced during the PCR mutagenesis process. Flag-Beclin1 fragments (1–242, 151–241 and 243–450) were obtained from Addgene⁵⁷. Mutagenesis of Flag-Beclin1 1–242 fragment to obtain S22A, T38A and T119A was performed by similar method as detailed above. pEGFPC1-LC3 is described elsewhere³⁷.

Antibodies and reagents

Antibodies used in this study are as follows: ROCK1 (IP: C19; WB: H85 (1:2000); IF: K18 (1:700), Santa Cruz), ROCK2 (H85 (1:2000), Santa Cruz), Beclin1 (IP: K15, Santa Cruz; WB: 3495 (1:2000), Cell signaling; IF: 55556 (1:700), Novus), PDI (3501 (1:1000), Cell signaling), Mek1/2 (M17030 (1:1000), Transduction Laboratories), Flag (M2 (1:200–1:500), Sigma), LC3 (3868 (1:1000), Cell Signaling), p-MYPT1 (04–773 (1:500), Millipore; 5163 (1:500), Cell Signaling), MYPT1 (2634 (1:1000), Cell Signaling), p-Ser/Thr (22A, (1:250–5% milk) BD Biosciences), p62 (5114, (1:1000), Cell signaling), p-T119 Beclin1 (AP3765a (1:400), Abgent), β -actin (A5441 (1:10000), Sigma), and DAPI (1:10,000, Roche). Bafilomycin A1 (Sigma) was dissolved in DMSO, and Y27632 (Calbiochem) was dissolved in water. Complete protease inhibitor and PhosStop phosphatase inhibitor cocktail tablets were purchased from Roche. For cDNA and siRNA transfection, Lipofectamine 2000 (Invitrogen) and X-tremeGENE (Roche), respectively, was used according to manufacturers' protocols.

Immunoblot and immunoprecipitation

For endogenous ROCK1 and Beclin1 immunoprecipitation, Crosslink IP kit (Thermo Pierce) was used according to manufacturer's recommendation with a few changes. In short, ROCK1 or Beclin1 antibody was crosslinked to Protein A/G agarose (Santa Cruz) using 450 μ M DSS. Cells were lysed with the provided IP lysis buffer (0.025 M Tris, 0.15 M NaCl, 0.001 M EDTA, 1% NP-40, 5% glycerol; pH 7.4) supplemented with protease and phosphatase inhibitors (Roche), incubated on ice for 1h, passed through a syringe and then centrifuged. Normalized lysates were mixed with ROCK1- or Beclin1-conjugated beads overnight, washed 4 \times with 0.2% lysis buffer, followed by elution for 15 min at RT. Flag IP was performed according to manufacturer's protocol and precipitated proteins were eluted using elution buffer (Thermo Pierce). Myc-IP was performed using Myc-conjugated agarose from Cell Signaling (3400). For immunoblot analysis, cells were lysed with 1% Triton X-100 (v/v) lysis buffer (0.02 M Tris, 0.005 M EDTA, 0.01 M Na₄P₂O₇, 0.1 M NaF, 0.002 M Na₃VO₄ and 1% Triton X-100) with protease/phosphatase inhibitor cocktail, resolved by NuPAGE (Invitrogen) gels and transferred onto nitrocellulose membrane for detection with antibodies. Subcellular fractionation was performed as described previously⁵⁸. Full-length images of immunoblots are shown in Supplementary Figures S13 and S14.

Immunofluorescence

For ROCK1 and Beclin1 fluorescence, cells were grown on glass coverslips, subjected to glucose starvation and fixed with cold methanol for 10 min. Fixed cells were washed 3 \times with 0.1% PBS-Triton X-100 (PBST), blocked with 5% BSA-1% calf serum-containing PBST for 1 h at RT and incubated with primary antibodies (1:700 each) overnight. Staining was visualized with Alexa Fluor secondary antibodies using the Nikon A1 confocal microscope. For LC3 staining, cells on coverslips were cultured in DMEM or HBSS for indicated times. Cells were then washed in ice-cold PBS and fixed in chilled acetone for 5 min. LC3 puncta were labeled with anti-LC3B and counterstained with DAPI. For EJ cells stably transfected with GFP-LC3, treated cells were fixed in 2% paraformaldehyde for 10 min at RT. Cells were then washed extensively to remove any debris, counterstained with DAPI and examined using Zeiss VivaTome microscope.

Förster resonance energy transfer (FRET)

HeLa cells were transfected with pZsYellow1-C1 (Clonetechn-632444)-ROCK1 (cloned using SacI and SacII RE sites) and mCER (Addgene-15214)-Beclin1 (cloned using EcoRI and BamHI). For simplicity purpose, pZsYellow1-C1-ROCK1 was addressed as YFP-ROCK1 and mCER-Beclin1 as CFP-Beclin1. Transfected cells were plated on a glass

bottom petri dish (Fluorodish, World Precision Instrument, INC, Sarasota, FL) and maintained in normal (+ glucose) DMEM media before switching to starvation (HBSS) media. Cells were placed on a Nikon Eclipse-Ti confocal microscope system equipped with an oil immersion 60× NA 1.49 apo-TIRF objective, perfect focus and an environmental control incubation chamber (37°C, 5% CO₂). The emission fluorescence intensities were determined at 540 ± 15 nm (YFP) and 482 ± 18 nm (CFP) with a high-speed resonant scanner (dichroic mirror 457/514). The FRET ratio analysis was performed as previously described⁵⁹. The FRET ratio was corrected for both the bleed-through of CFP into the 540 nm channel and the cross-talk due to the direct YFP excitation by light at 440 nm. Control experiments were performed with single fluorophore transfected cells maintained in DMEM with high glucose. Media was changed to HBSS by perfusion, just as in FRET experiments.

Protein purification and *in vitro* kinase assay

For recombinant Beclin1, bacterial expression construct, pRSET, containing His-Beclin1 (full-length), was transformed in *Escherichia coli* BL21. Cells were induced with 1mM IPTG at 30°C for 2h. Cell pellet was resuspended in cold PBS and subjected to ultrasonication. Protein was purified using TALON beads (Clontech) following the manufacturer's protocol. *In vitro* kinase assay was performed using His-Beclin1 as substrate and recombinant ROCK1 (Millipore). HeLa cells were transiently transfected with Flag-Beclin1 constructs using Lipofectamine 2000. 36 hrs post-transfection, cells were harvested in lysis buffer supplemented with protease inhibitors. Immunoprecipitation with Flag-agarose was performed and washed, and the resulting immune-complexed beads were used as substrate for the *in vitro* kinase assay. For *in vitro* kinase assay, recombinant MYPT1 (12–421, Millipore) or recombinant His-Beclin1 or Flag-Beclin1 constructs were used as substrates. Endogenous ROCK1 (immunoprecipitated from EJ cells) or recombinant ROCK1 was used as the kinase as indicated in figure legends. The kinase assay was performed as previously described⁵. In short, the substrate and kinase were incubated in kinase buffer (20 mM Tris, pH 7.5, 5 mM MgCl₂, 100 mM KCl, 0.1 mM dithiothreitol (DTT), 100 μM adenosine triphosphate (ATP), 1 mM EDTA, 1 μM microcystin-LR, and 1 μCi [³²P]ATP) at 30°C for 40 min. Reaction was terminated using SDS-loading buffer, and proteins were resolved on 4–12% gel (NuPAGE), dried and exposed to film overnight at -80°C.

Electron Microscopy

Tissues were fixed in 2.0% glutaraldehyde in 0.1 M sodium cacodylate buffer, pH 7.4 (Electron Microscopy Sciences, Hatfield, PA) overnight at 4°C. They were rinsed in buffer, post-fixed in 1.0% osmium tetroxide in cacodylate buffer for 1 hour at room temperature, rinsed in buffer again and dehydrated through a graded series of ethanol to 100%. They were then infiltrated with Epon resin (Ted Pella, Redding, CA) in a 1:1 solution of Epon:ethanol. The following day they were placed in fresh Epon for several hours and then embedded in Epon overnight at 60°C. Thin sections were cut on a Leica EM UC7 ultramicrotome, collected onto formvar-coated grids, stained with uranyl acetate and lead citrate and examined in a JEOL JEM 1011 transmission electron microscope at 80 kV. Images were collected using an AMT digital imaging system (Advanced Microscopy Techniques, Danvers, MA). Cells were fixed in the same glutaraldehyde fix for 1 hr at room temperature. They were rinsed, scraped and pelleted and osmicated as above. After further buffer rinses, they were embedded in 2.0% agarose for ease of handling and dehydrated, infiltrated and embedded in Epon.

Mice strains and tissue isolation

The *Rock1* allele in these animals contains loxP sites flanking exon 5 as described⁶⁰. The floxed mice (*Rock1*^{fllox/flox}) were bred with EIIa-cre mice to generate mice heterozygous for

Rock1 exon 5 deletion (*Rock1^{flox/-}*). *Rock1^{flox/-}* heterozygous mice were then intercrossed to generate *Rock1^{-/-}* homozygous mice, designated as ROCK1 knockout mice. All animals were housed in a temperature-controlled environment with 12-hr light/dark cycles and ad libitum access to food and water. For starvation studies, male mice (8 weeks of age) were deprived of food for 16 hr in clean cages but received water ad libitum. ROCK1 (+/+) and ROCK1 (+/-): n = 6 (fed) and n = 5 (starved); ROCK1 (-/-): n = 3 (fed) and n = 3 (starved) mice were used. Experimental mice were euthanized by cervical dislocation and hearts were harvested immediately and processed for immunofluorescence (washed in PBS and placed in OCT) or frozen in liquid nitrogen for molecular analysis. These tissue samples were then lysed in lysis buffer using a Tissue Lyser on ice for 2 min. Protein was measured using Bradford, normalized and resolved on SDS-PAGE. All animal experiments were approved by the Subcommittee on Research Animal Care of Massachusetts General Hospital (Protocol #2005N000022).

Supplementary Material

Refer to Web version on PubMed Central for supplementary material.

Acknowledgments

Electron microscopy was performed by M. McKee and FRET was performed in the Microscopy Core of Center for Systems Biology/Program in Membrane Biology, which is partially supported by an Inflammatory Bowel Disease Grant DK43351 and a Boston Area Diabetes and Endocrinology Research Center (BADERC) Award DK57521. We thank E. White for cell lines, N. Mizushima for GFP-LC3. This work is supported by NIH grants CA127247 and CA149477 to S.W.L., CA140615 to A.M., and DK083567 to Y.B.K. A Canadian Institute for Health Research grant supported S.E.D.

References

- Ishizaki T, et al. The small GTP-binding protein Rho binds to and activates a 160 kDa Ser/Thr protein kinase homologous to myotonic dystrophy kinase. *Embo J.* 1996; 15:1885–1893. [PubMed: 8617235]
- Riento K, Ridley AJ. Rocks: multifunctional kinases in cell behaviour. *Nat Rev Mol Cell Biol.* 2003; 4:446–456. [PubMed: 12778124]
- Li Z, et al. Regulation of PTEN by Rho small GTPases. *Nat Cell Biol.* 2005; 7:399–404. [PubMed: 15793569]
- Lee DH, et al. Targeted disruption of ROCK1 causes insulin resistance in vivo. *J Biol Chem.* 2009; 284:11776–11780. [PubMed: 19276091]
- Ongusaha PP, et al. Identification of ROCK1 as an upstream activator of the JIP-3 to JNK signaling axis in response to UVB damage. *Sci Signal.* 2008; 1:ra14. [PubMed: 19036714]
- Furukawa N, et al. Role of Rho-kinase in regulation of insulin action and glucose homeostasis. *Cell Metab.* 2005; 2:119–129. [PubMed: 16098829]
- Tominaga T, Barber DL. Na-H exchange acts downstream of RhoA to regulate integrin-induced cell adhesion and spreading. *Mol Biol Cell.* 1998; 9:2287–2303. [PubMed: 9693382]
- Amano M, Nakayama M, Kaibuchi K. Rho-kinase/ROCK: A key regulator of the cytoskeleton and cell polarity. *Cytoskeleton (Hoboken).* 2010; 67:545–554. [PubMed: 20803696]
- Song P, et al. Thromboxane A2 receptor activates a Rho-associated kinase/LKB1/PTEN pathway to attenuate endothelium insulin signaling. *J Biol Chem.* 2009; 284:17120–17128. [PubMed: 19403525]
- Yang Z, Klionsky DJ. Eaten alive: a history of macroautophagy. *Nat Cell Biol.* 2010; 12:814–822. [PubMed: 20811353]
- Mizushima N, Levine B, Cuervo AM, Klionsky DJ. Autophagy fights disease through cellular self-digestion. *Nature.* 2008; 451:1069–1075. [PubMed: 18305538]

12. Gutierrez MG, et al. Autophagy is a defense mechanism inhibiting BCG and Mycobacterium tuberculosis survival in infected macrophages. *Cell*. 2004; 119:753–766. [PubMed: 15607973]
13. Sridhar S, Botbol Y, Macian F, Cuervo AM. Autophagy and disease: always two sides to a problem. *J Pathol*. 2012; 226:255–273. [PubMed: 21990109]
14. Singh R, Cuervo AM. Autophagy in the cellular energetic balance. *Cell Metab*. 2011; 13:495–504. [PubMed: 21531332]
15. Mizushima N. The pleiotropic role of autophagy: from protein metabolism to bactericide. *Cell Death Differ*. 2005; 12(Suppl 2):1535. [PubMed: 16247501]
16. Liang XH, et al. Protection against fatal Sindbis virus encephalitis by beclin, a novel Bcl-2-interacting protein. *J Virol*. 1998; 72:8586–8596. [PubMed: 9765397]
17. Oberstein A, Jeffrey PD, Shi Y. Crystal structure of the Bcl-XL-Beclin 1 peptide complex: Beclin 1 is a novel BH3-only protein. *J Biol Chem*. 2007; 282:13123–13132. [PubMed: 17337444]
18. Maiuri MC, et al. Functional and physical interaction between Bcl-X(L) and a BH3-like domain in Beclin-1. *Embo J*. 2007; 26:2527–2539. [PubMed: 17446862]
19. Pattingre S, et al. Bcl-2 antiapoptotic proteins inhibit Beclin 1-dependent autophagy. *Cell*. 2005; 122:927–939. [PubMed: 16179260]
20. Erlich S, et al. Differential interactions between Beclin 1 and Bcl-2 family members. *Autophagy*. 2007; 3:561–568. [PubMed: 17643073]
21. Funderburk SF, Wang QJ, Yue Z. The Beclin 1-VPS34 complex--at the crossroads of autophagy and beyond. *Trends Cell Biol*. 2010; 20:355–362. [PubMed: 20356743]
22. Yue Z, Jin S, Yang C, Levine AJ, Heintz N. Beclin 1, an autophagy gene essential for early embryonic development, is a haploinsufficient tumor suppressor. *Proc Natl Acad Sci U S A*. 2003; 100:15077–15082. [PubMed: 14657337]
23. Russell SE, Hickey GI, Lowry WS, White P, Atkinson RJ. Allele loss from chromosome 17 in ovarian cancer. *Oncogene*. 1990; 5:1581–1583. [PubMed: 2250914]
24. Futreal PA, et al. Detection of frequent allelic loss on proximal chromosome 17q in sporadic breast carcinoma using microsatellite length polymorphisms. *Cancer Res*. 1992; 52:2624–2627. [PubMed: 1568230]
25. Kim MS, et al. Frameshift mutation of UVRAG, an autophagy-related gene, in gastric carcinomas with microsatellite instability. *Hum Pathol*. 2008; 39:1059–1063. [PubMed: 18495205]
26. Ionov Y, Nowak N, Perucho M, Markowitz S, Cowell JK. Manipulation of nonsense mediated decay identifies gene mutations in colon cancer Cells with microsatellite instability. *Oncogene*. 2004; 23:639–645. [PubMed: 14737099]
27. Kamai T, et al. The rho/rho-kinase pathway is involved in the progression of testicular germ cell tumour. *BJU Int*. 2002; 89:449–453. [PubMed: 11872041]
28. Kamai T, et al. Significant association of Rho/ROCK pathway with invasion and metastasis of bladder cancer. *Clin Cancer Res*. 2003; 9:2632–2641. [PubMed: 12855641]
29. Abe H, et al. Possible role of the RhoC/ROCK pathway in progression of clear cell renal cell carcinoma. *Biomed Res*. 2008; 29:155–161. [PubMed: 18614849]
30. Lochhead PA, Wickman G, Mezna M, Olson MF. Activating ROCK1 somatic mutations in human cancer. *Oncogene*. 2010; 29:2591–2598. [PubMed: 20140017]
31. Bauer PO, et al. Inhibition of Rho kinases enhances the degradation of mutant huntingtin. *J Biol Chem*. 2009; 284:13153–13164. [PubMed: 19278999]
32. Mleczak A, Millar S, Tooze SA, Olson MF, Chan EY. Regulation of autophagosome formation by Rho kinase. *Cell Signal*. 2013; 25:1–11. [PubMed: 22975682]
33. Matsui T, et al. Rho-associated kinase, a novel serine/threonine kinase, as a putative target for small GTP binding protein Rho. *Embo J*. 1996; 15:2208–2216. [PubMed: 8641286]
34. Chang J, et al. Activation of Rho-associated coiled-coil protein kinase 1 (ROCK-1) by caspase-3 cleavage plays an essential role in cardiac myocyte apoptosis. *Proc Natl Acad Sci U S A*. 2006; 103:14495–14500. [PubMed: 16983089]
35. Pinner S, Sahai E. PDK1 regulates cancer cell motility by antagonising inhibition of ROCK1 by RhoE. *Nat Cell Biol*. 2008; 10:127–137. [PubMed: 18204440]

36. Mizushima N, Yoshimori T, Levine B. Methods in mammalian autophagy research. *Cell*. 2010; 140:313–326. [PubMed: 20144757]
37. Kabeya Y, et al. LC3, a mammalian homologue of yeast Apg8p, is localized in autophagosomal membranes after processing. *Embo J*. 2000; 19:5720–5728. [PubMed: 11060023]
38. Yamamoto A, et al. Bafilomycin A1 prevents maturation of autophagic vacuoles by inhibiting fusion between autophagosomes and lysosomes in rat hepatoma cell line, H-4-II-E cells. *Cell Struct Funct*. 1998; 23:33–42. [PubMed: 9639028]
39. Bjorkoy G, et al. p62/SQSTM1 forms protein aggregates degraded by autophagy and has a protective effect on huntingtin-induced cell death. *J Cell Biol*. 2005; 171:603–614. [PubMed: 16286508]
40. Zalckvar E, et al. DAP-kinase-mediated phosphorylation on the BH3 domain of beclin 1 promotes dissociation of beclin 1 from Bcl-XL and induction of autophagy. *EMBO Rep*. 2009; 10:285–292. [PubMed: 19180116]
41. Feng W, Huang S, Wu H, Zhang M. Molecular basis of Bcl-xL's target recognition versatility revealed by the structure of Bcl-xL in complex with the BH3 domain of Beclin-1. *J Mol Biol*. 2007; 372:223–235. [PubMed: 17659302]
42. Sebbagh M, et al. Caspase-3-mediated cleavage of ROCK I induces MLC phosphorylation and apoptotic membrane blebbing. *Nat Cell Biol*. 2001; 3:346–352. [PubMed: 11283607]
43. Coleman ML, et al. Membrane blebbing during apoptosis results from caspase-mediated activation of ROCK I. *Nat Cell Biol*. 2001; 3:339–345. [PubMed: 11283606]
44. Mali RS, et al. Rho kinase regulates the survival and transformation of cells bearing oncogenic forms of KIT, FLT3, and BCR-ABL. *Cancer Cell*. 2011; 20:357–369. [PubMed: 21907926]
45. Harrison B, et al. DAPK-1 binding to a linear peptide motif in MAP1B stimulates autophagy and membrane blebbing. *J Biol Chem*. 2008; 283:9999–10014. [PubMed: 18195017]
46. Kang C, You YJ, Avery L. Dual roles of autophagy in the survival of *Caenorhabditis elegans* during starvation. *Genes Dev*. 2007; 21:2161–2171. [PubMed: 17785524]
47. Gozuacik D, et al. DAP-kinase is a mediator of endoplasmic reticulum stress-induced caspase activation and autophagic cell death. *Cell Death Differ*. 2008; 15:1875–1886. [PubMed: 18806755]
48. Valentza AV, Schumacher AM, Weiss C, Egli M, Watterson DM. A protein kinase associated with apoptosis and tumor suppression: structure, activity, and discovery of peptide substrates. *J Biol Chem*. 2001; 276:38956–38965. [PubMed: 11483604]
49. Shani G, et al. Death-associated protein kinase phosphorylates ZIP kinase, forming a unique kinase hierarchy to activate its cell death functions. *Mol Cell Biol*. 2004; 24:8611–8626. [PubMed: 15367680]
50. Hagerty L, et al. ROCK1 phosphorylates and activates zipper-interacting protein kinase. *J Biol Chem*. 2007; 282:4884–4893. [PubMed: 17158456]
51. Wei Y, Pattingre S, Sinha S, Bassik M, Levine B. JNK1-mediated phosphorylation of Bcl-2 regulates starvation-induced autophagy. *Mol Cell*. 2008; 30:678–688. [PubMed: 18570871]
52. He C, et al. Exercise-induced BCL2-regulated autophagy is required for muscle glucose homeostasis. *Nature*. 2012; 481:511–515. [PubMed: 22258505]
53. Fan QW, et al. Akt and autophagy cooperate to promote survival of drug-resistant glioma. *Sci Signal*. 2010; 3:ra81. [PubMed: 21062993]
54. O'Donovan TR, O'Sullivan GC, McKenna SL. Induction of autophagy by drug-resistant esophageal cancer cells promotes their survival and recovery following treatment with chemotherapeutics. *Autophagy*. 2011; 7:509–524. [PubMed: 21325880]
55. Degenhardt K, et al. Autophagy promotes tumor cell survival and restricts necrosis, inflammation, and tumorigenesis. *Cancer Cell*. 2006; 10:51–64. [PubMed: 16843265]
56. Kreuzaler P, Watson CJ. Killing a cancer: what are the alternatives? *Nat Rev Cancer*. 2012
57. Sun Q, et al. Identification of Barkor as a mammalian autophagy-specific factor for Beclin 1 and class III phosphatidylinositol 3-kinase. *Proc Natl Acad Sci U S A*. 2008; 105:19211–19216. [PubMed: 19050071]

58. Matsunaga K, et al. Two Beclin 1-binding proteins, Atg14L and Rubicon, reciprocally regulate autophagy at different stages. *Nat Cell Biol.* 2009; 11:385–396. [PubMed: 19270696]
59. Ferrandon S, et al. Sustained cyclic AMP production by parathyroid hormone receptor endocytosis. *Nat Chem Biol.* 2009; 5:734–742. [PubMed: 19701185]
60. Huang H, et al. Rho-kinase regulates energy balance by targeting hypothalamic leptin receptor signaling. *Nat Neurosci.* 2012; 15:1391–1398. [PubMed: 22941110]

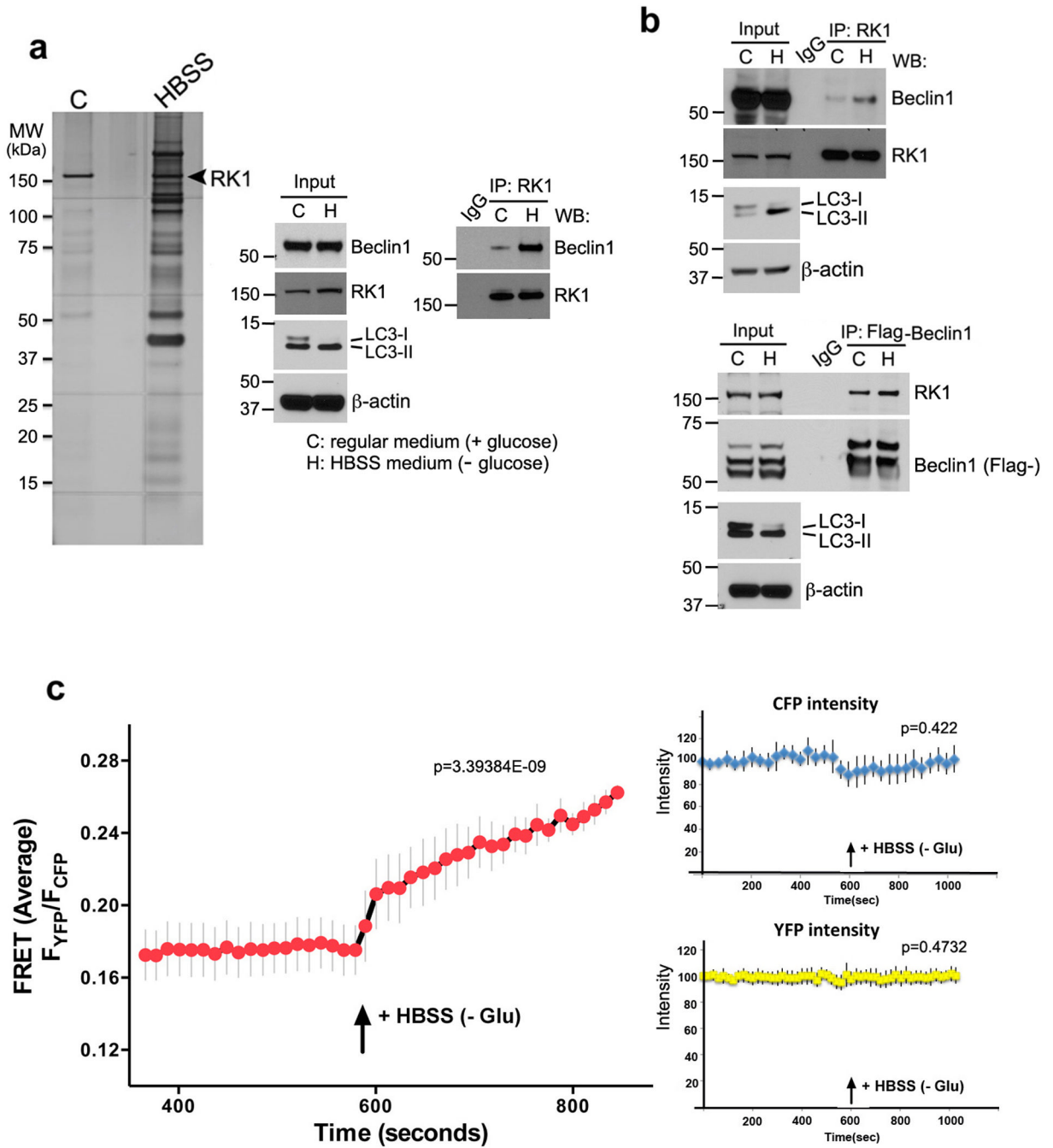


Figure 1. Functional interaction of Beclin1 with ROCK1 upon metabolic stress

(a) Identification of Beclin1 as a substrate of ROCK1 via affinity purification. Left panel: HeLa cells growing in control (C: nutrient-rich media) or starved in HBSS (H) for 4 h were lysed and subjected to immunoprecipitation with ROCK1 cross-linked beads. Proteins bound were eluted and detected by SDS-PAGE, followed by silver staining which presents precipitated proteins identified by LC-MS/MS. Right panel: HeLa cells grown in control media or HBSS (4 h) were harvested, whole cell lysates prepared and immunoprecipitated with ROCK1 cross-linked beads. The resulting immune-complexes were divided into two and subjected to SDS-PAGE and analyzed for Beclin1 (MES buffer) and ROCK1 (MOPS

buffer). Inputs and IP were analyzed by western blotting. HBSS treated cell extracts were used for IgG immunoprecipitation controls. Whole cell lysates (10%) were run for inputs. Total cell lysates were re-run and analyzed for LC3 and β -actin. **(b)** Co-immunoprecipitation was performed with 293T whole cell extracts using ROCK1-cross linked agarose, and the resulting IP was blotted with indicated antibodies. 293T cells transfected with Flag-Beclin1 for 36 h, cultured in control media or starved (4 h), were immunoprecipitated with anti-Flag beads. Inputs and immune-complexes were resolved and detected. Total cell lysates were re-run and examined for LC3 and β -actin expression. **(c)** Interaction of YFP-ROCK1 and CFP-Beclin1 was examined by using live cell spinning disk microscopy and FRET in live cells. Graph represents FRET _{Average} ratio changes (YFP-ROCK1/CFP-Beclin1) upon starvation. Data represents mean \pm s.e.m; n=6. Three different experiments were performed. For the control, the right top graph represents CFP intensity over time (corrected for photobleach), and the right bottom right represents YFP intensity (corrected for photobleach). In both control FRET experiments, no significant change was observed in fluorescence, in the presence or absence of HBSS medium.

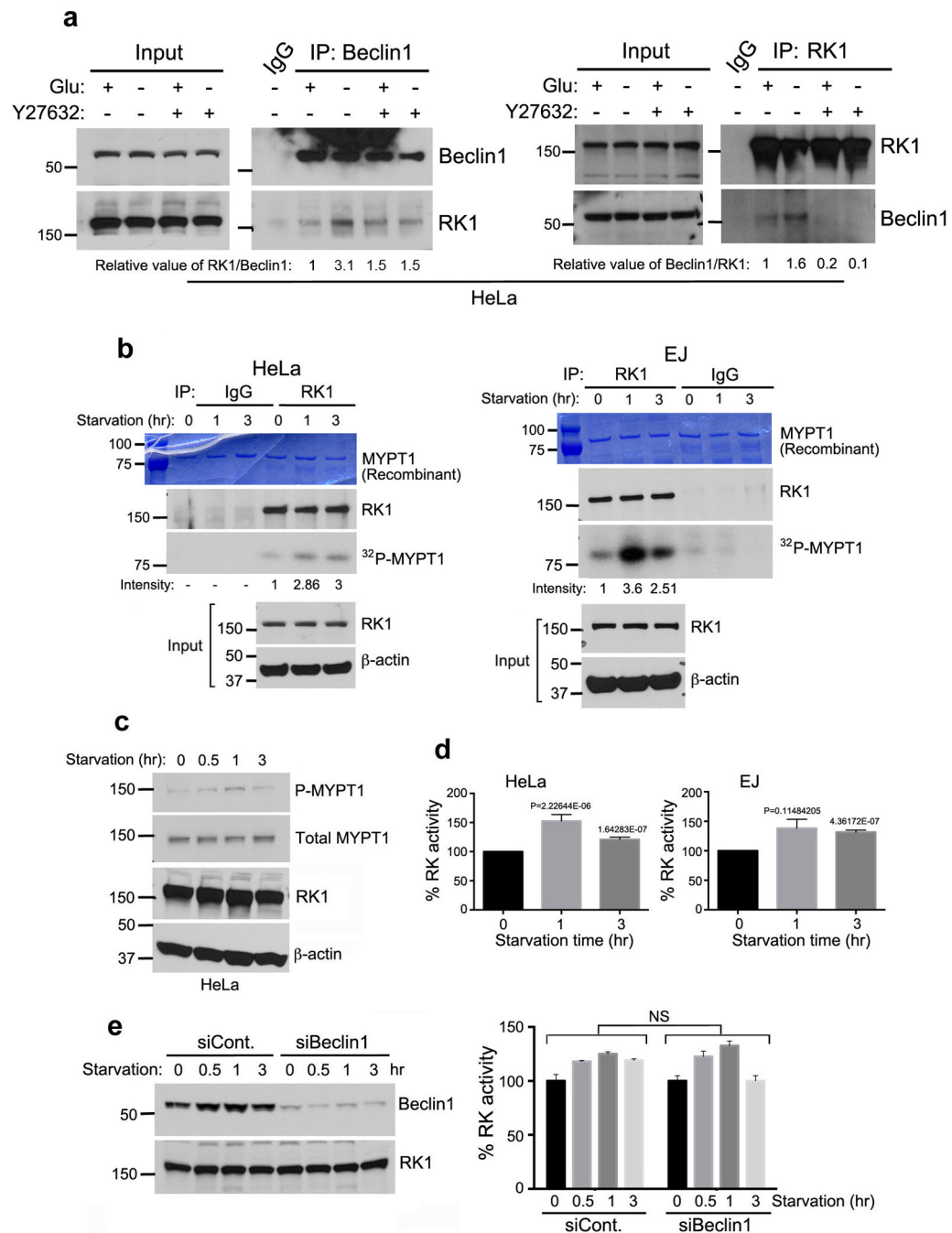


Figure 2. ROCK1 is activated upon metabolic stress

(a) Inhibition of ROCK1 activity ablates the interaction between Beclin1 and ROCK1. HeLa cells were untreated (H₂O) or treated with 10 μ M ROCK1 inhibitor, Y27632, for 8 h and then cultured in control media (+) or HBSS (-) for 4 h. Cells were harvested, lysed and immunoprecipitated with Beclin1 (left panel) or ROCK1 (right panel) antibody. Left panel-Immune-complexes were divided into two (ROCK1-MOPS buffer and Beclin1-MES buffer) and probed for ROCK1 and Beclin1. Relative values of ROCK1 versus Beclin1 are shown. (b) An increase in ROCK1-mediated phosphorylation of MYPT1 upon starvation. HeLa and EJ cells were starved in HBSS for indicated time-points and endogenous ROCK1 was

immunoprecipitated. An *in vitro* kinase assay was performed using MYPT1 as substrate and immune-complexed ROCK1. Proteins were resolved and visualized with Coomassie (top), western blot (middle) and autoradiography (bottom). Inputs were examined for ROCK1 and β -actin. (c) HeLa cells incubated in HBSS were harvested and endogenous phosphorylation of MYPT1 was determined by western blotting. The same blot was then washed in TBST for 30 min, blocked in 5% milk and analyzed for total MYPT1 as a control. Extracts from this experiment were re-run on 7.5% gel and analyzed for ROCK1 and β -actin. (d) ROCK activity is increased upon starvation. Cell lines (HeLa and EJ) grown in control (+Glu) or starved with HBSS for 1 and 3 h were lysed, extracts normalized and ROCK kinase activity was measured by ELISA. Graphs represent ROCK activity in starved cells plotted as percent of ROCK1 activity in control (glucose-rich) cells. Data was obtained from triplicates performed at the same time (mean \pm s.d.). p-value was calculated using Student's t-test. (e) ROCK1 activity is not dependent on Beclin1. siControl (siCont.) and siBeclin1 knockdown cells were incubated in starvation media (HBSS) for indicated time. Resulting cell extracts were used to confirm Beclin1 knockdown and ROCK1 expression (left panel). Cell extracts from the same experiment were used for ELISA measuring ROCK activity (right panel). Graph represents mean \pm s.d. of duplicate samples read at the same time (Student t-test: NS=not significant).

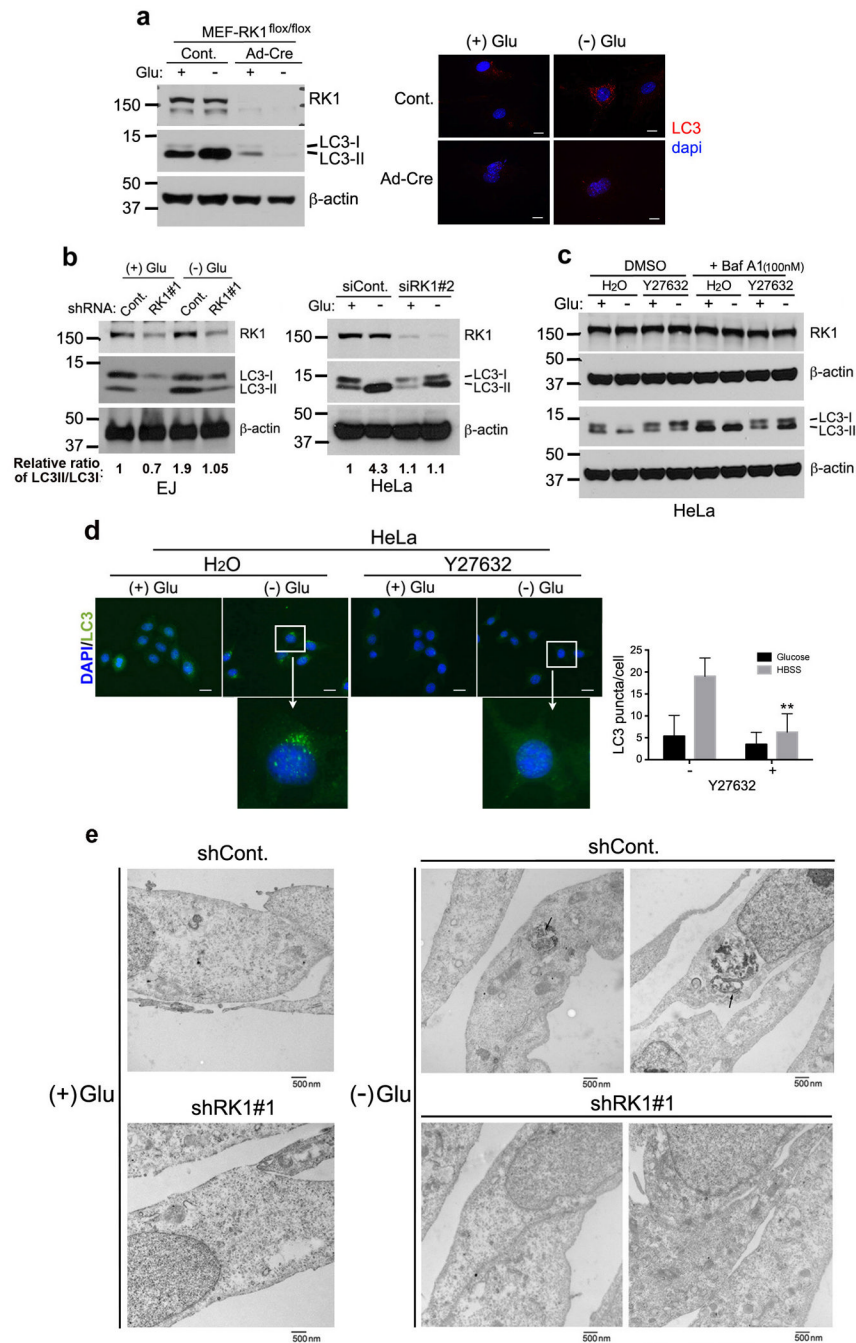


Figure 3. ROCK1 activity is essential for metabolic stress-induced autophagy

(a) The effect of ROCK1 depletion on autophagy marker, LC3II. MEF ROCK1^{flox/flox} cells were generated and treated with Con or Ad-Cre for 72h. Cells were then incubated in nutrient rich (+Glucose) or HBSS media for 2h. Cell extracts were resolved by SDS-PAGE and ROCK1 knockout was confirmed by western blotting (left panel). The same blot was used for LC3 and β -actin expression. Cells from the same experiment were fixed with chilled acetone and immunofluorescence was performed against endogenous LC3 (red). Blue represents nuclear dapi staining. (b) EJ cells (left) with a stable knockdown using shCont. or shROCK1#1 were incubated in control (+ glucose) or nutrient-free (HBSS) medium (-

glucose) for 24 h and lysed. Lysates were subjected to western blotting with antibodies indicated. HeLa cells (right) with a transient knockdown using siCont. and siROCK1#2 for 30 h were further incubated in control or HBSS media for 8 h. Whole cell extracts were prepared, resolved by SDS-PAGE and analyzed for ROCK1, LC3 and β -actin. Relative ratios of LC3II/LC3I are shown. (c) HeLa cells were treated with H₂O or 10 μ M ROCK1 inhibitor, Y27632, for 8 h. Cells were then cultured in high glucose (0 h) or starved for in HBSS nutrient-free media for 6h. 1h prior to harvest, cells were incubated in DMSO (control) or 0.1 μ M bafilomycin-A1. Whole cell lysates were resolved by SDS-PAGE and analyzed by western blotting with indicated antibodies. (d) HeLa cells incubated with H₂O or 10 μ M Y27632 for 8 h were washed with PBS and cultured in control (+ Glu) or HBSS media (- Glu) for an additional 8 h. Cells were fixed in acetone and immunofluorescence was performed against endogenous LC3 antibody (green). Scale = 20 μ m. Graph represents % of LC3 punctae/cell (mean \pm SD), n=25 cells; (Student t-test) **, p= 0.00041 (e) Transmission electron micrographs of EJ cells with stable shCont. or shROCK1#1 knockdown, cultured in control or HBSS medium for 16 h. Arrow bars indicate autophagic vacuoles. Scale = 500 nm.

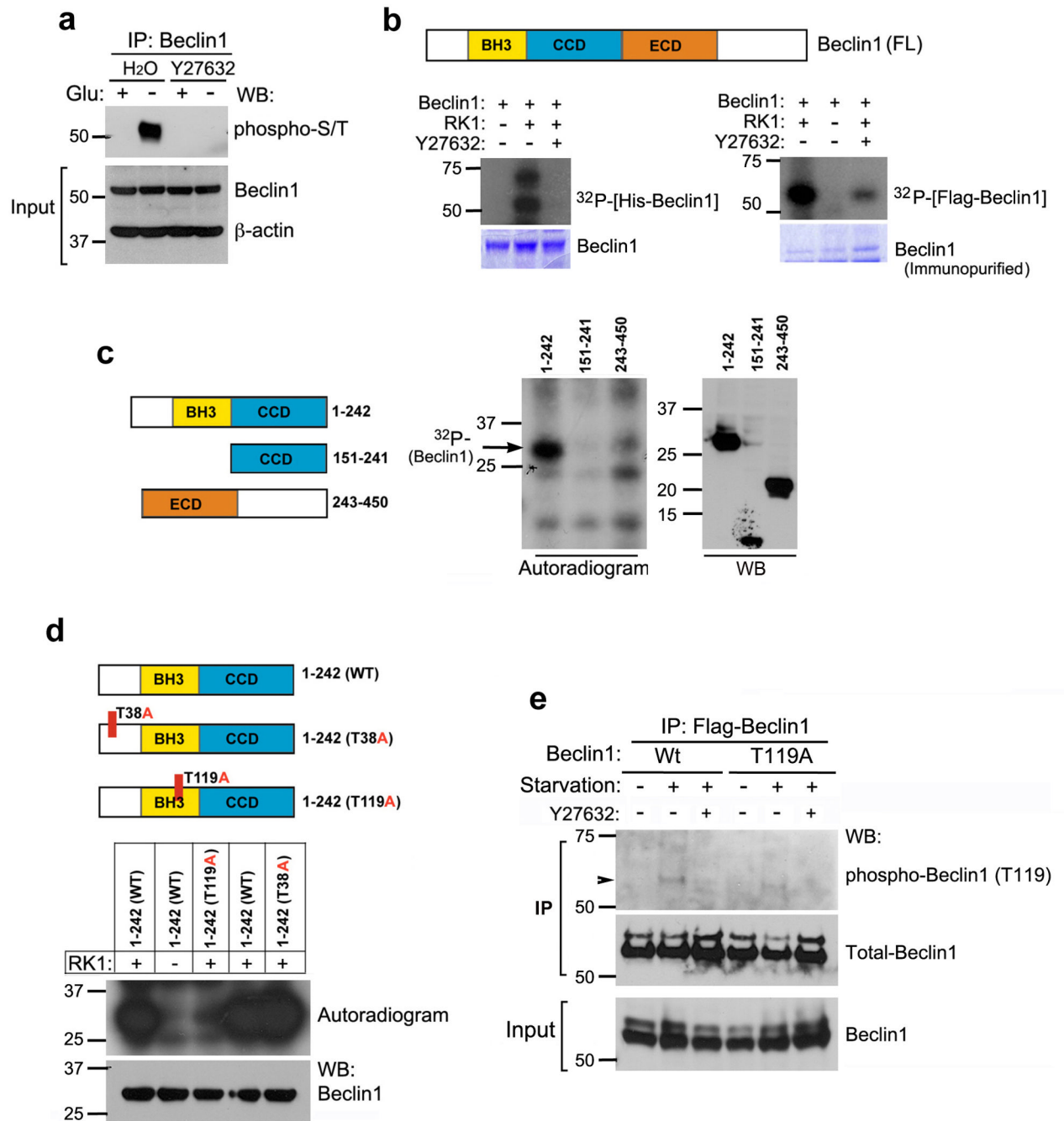


Figure 4. Metabolic stress induces Beclin1 phosphorylation by ROCK1

(a) Inhibition of ROCK1 kinase activity prevents metabolic stress-mediated phosphorylation of Beclin1. HeLa cells left untreated or treated with a ROCK1 inhibitor, Y27632 (10 μ M) were starved of glucose (4 h) as indicated, and endogenous Beclin1 was immunoprecipitated and blotted against phospho-Ser/Thr antibody. Whole cell lysates were run as inputs for Beclin1 and β -actin. (b) Phosphorylation of Beclin1 by ROCK1. Recombinant ROCK1 was used for *in vitro* kinase assay in the presence or absence of Y27632, using recombinant His-Beclin1 (left) or Flag-Beclin1 immunopurified from transfected HeLa cells (right). Proteins were resolved by SDS-PAGE; phosphorylated protein was visualized with autoradiography,

and Beclin1 by Coomassie staining. **(c)** Identification of ROCK1-mediated phosphorylation domains in Beclin1. The indicated Flag-Beclin1 fragments were purified from HeLa cells and used as substrates for *in vitro* ROCK1 kinase assay. ³²P-autoradiogram (center) analyzed phosphorylation and western blotting (right) determined protein levels. Schematic representation of Beclin1 domain structure and deletion constructs are shown (left). **(d)** Identification of the phosphorylation site on Beclin1. Representation of point mutations in the different domains of Beclin1 are shown (left). *In vitro* kinase assay using Flag-Beclin1 WT and mutants (T38A and T119A), immunoprecipitated from transfected HeLa cells, as substrate and recombinant ROCK1 was performed. Phosphorylation was detected by ³²P-*in vitro* kinase assay, and Flag-Beclin1 levels were examined by western blotting. **(e)** Flag-Beclin1 Wt or T119A transfected HeLa cells were incubated in glucose-rich or nutrient free (HBSS) media, in the presence or absence of ROCK1 inhibitor Y27632. Total cell extracts were used for immunoprecipitation using Flag agarose. Eluted protein was analyzed by western blotting against phospho-T119 (Beclin) antibody and Beclin1. Input for Beclin1 was run on 7.5% gel and immunoblotted.

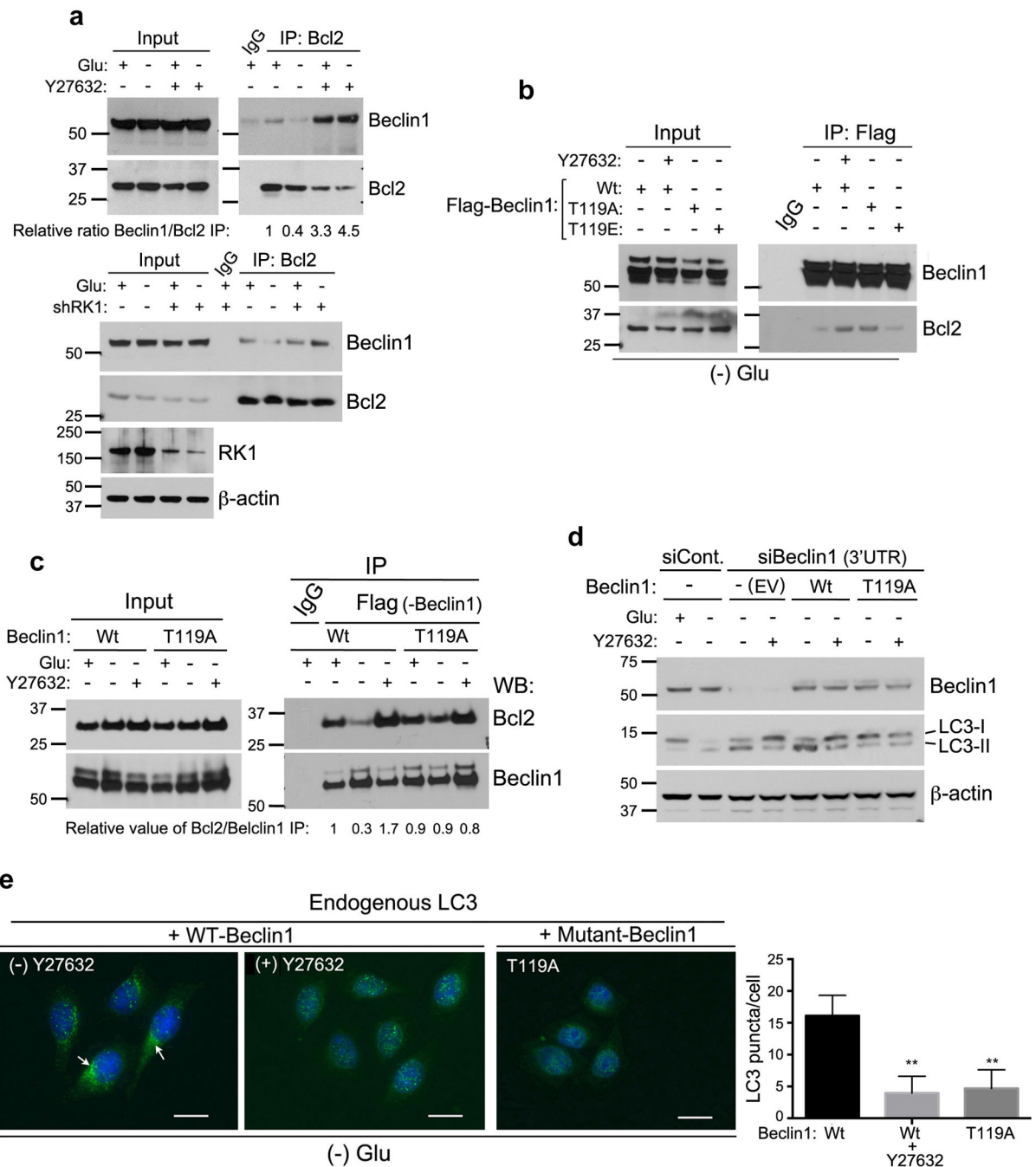


Figure 5. ROCK1 phosphorylation of Beclin1 at T119 promotes Bcl-2 dissociation

(a) Inhibiting ROCK1 activity increases the association between Beclin1 and Bcl-2. HeLa cells untreated or treated with 10 μ M Y27632 (top panel) were cultured in control or glucose free (4 h) medium, lysed and cell extracts prepared. Endogenous Bcl-2 was immunoprecipitated with cross-linked Bcl-2 agarose and resulting eluted immune-complexes were resolved by SDS-PAGE and blotted against indicated antibodies. EJ shCont. and shROCK1#1 cells (bottom panel) were grown in control or starvation media for 4 h and Bcl-2 IP was performed as above. Inputs were re-run to confirm ROCK1 knockdown. (b) HeLa cells were transfected with full-length constructs of Flag-Beclin WT,

Flag-Beclin T119A or Flag-Beclin T119E. Flag-Beclin WT cells were then treated with Y27632 for 8 h. Post-transfection and treatment with Y27632, cells were starved in HBSS medium for 4 h, after which cells were harvested and whole cell lysates prepared. Immunoprecipitation with Flag-agarose was performed for 2 h and proteins bound to beads were eluted and used for western blotting. **(c)** Flag-Beclin1 Wt or T119A transfected HeLa cells were incubated in glucose-rich or nutrient free (HBSS) media, in the presence or absence of ROCK1 inhibitor Y27632. Total cell extracts were used for immunoprecipitation using Flag agarose. Eluted protein was analyzed by western blotting against Bcl-2 and Beclin1. Inputs and IP were run on separate gels and same exposure is shown. **(d)** HeLa cells with a transient knockdown using siCont. and siBeclin1-3'UTR for 30 h were further left untreated or treated with 10 μ M Y27632. Cells were then incubated in control or HBSS media for 8 h. Whole cell extracts were prepared, resolved by SDS-PAGE and analyzed for Beclin1, LC3 and β -actin. **(e)** Endogenous LC3 staining in WT- or T119A-Beclin1 transfected cells. HeLa cells transfected with Flag-Beclin WT (\pm Y27632) and T119A were cultured in HBSS media for 6 h, fixed with cold acetone and endogenous LC3 immunofluorescence was performed. Representative images are shown; Scale = 20 μ m. Arrows indicate punctate LC3 staining. Graph represents (mean \pm SD), n=25, LC3 puncta/cell.

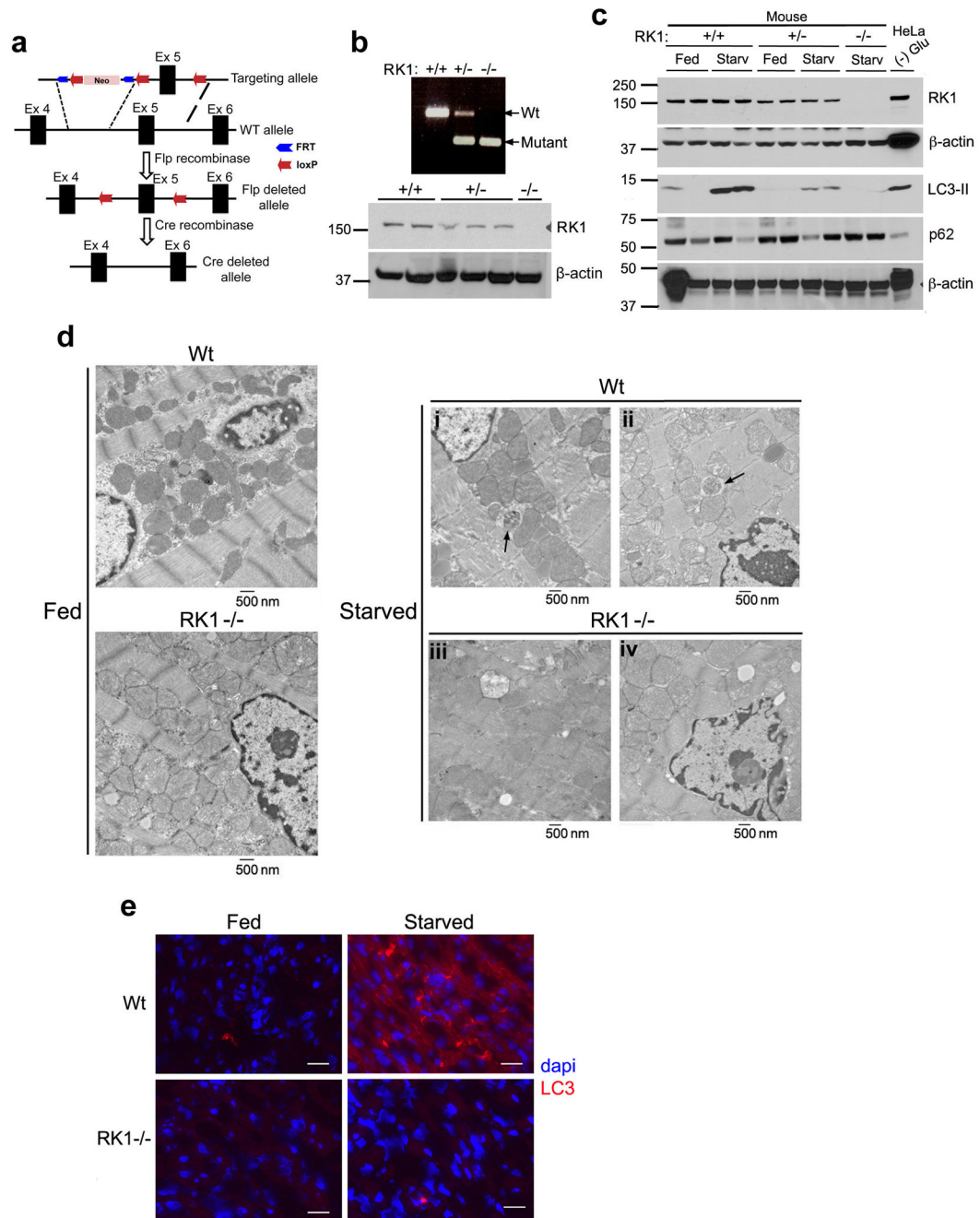


Figure 6. Disruption of ROCK1 leads to impaired autophagy *in vivo*

(a) Genomic structure of ROCK1 (exon 4–6 only) with targeted allele, Flp deleted allele and Cre deleted allele. (b) PCR assay using tail genomic DNA from three different genotypes, separated on 0.7% agarose gel (top). Western blot analysis of ROCK1 expression in the heart tissue from three different genotypes using anti-ROCK1 antibody (bottom). β -actin was used for protein loading control in each lane. (c) Mice were fed or starved for 16 h, and heart samples were prepared in lysis buffer. Resulting proteins were resolved by SDS-PAGE and blotted against ROCK1, LC3, autophagy marker p62 and β -actin. (d) ROCK1 deficient hearts or control hearts from animals fed or starved for 16 h were subjected to electron

microscopy to identify autophagosome structures. Arrows indicate autophagic vacuoles. Scale bar = 500 nm (e) Hearts from fed and starved ROCK1 WT and KO mice were sectioned, fixed in acetone and immunofluorescence assay was performed against endogenous LC3. Data are representative of 2 independent experiments from each genotype.

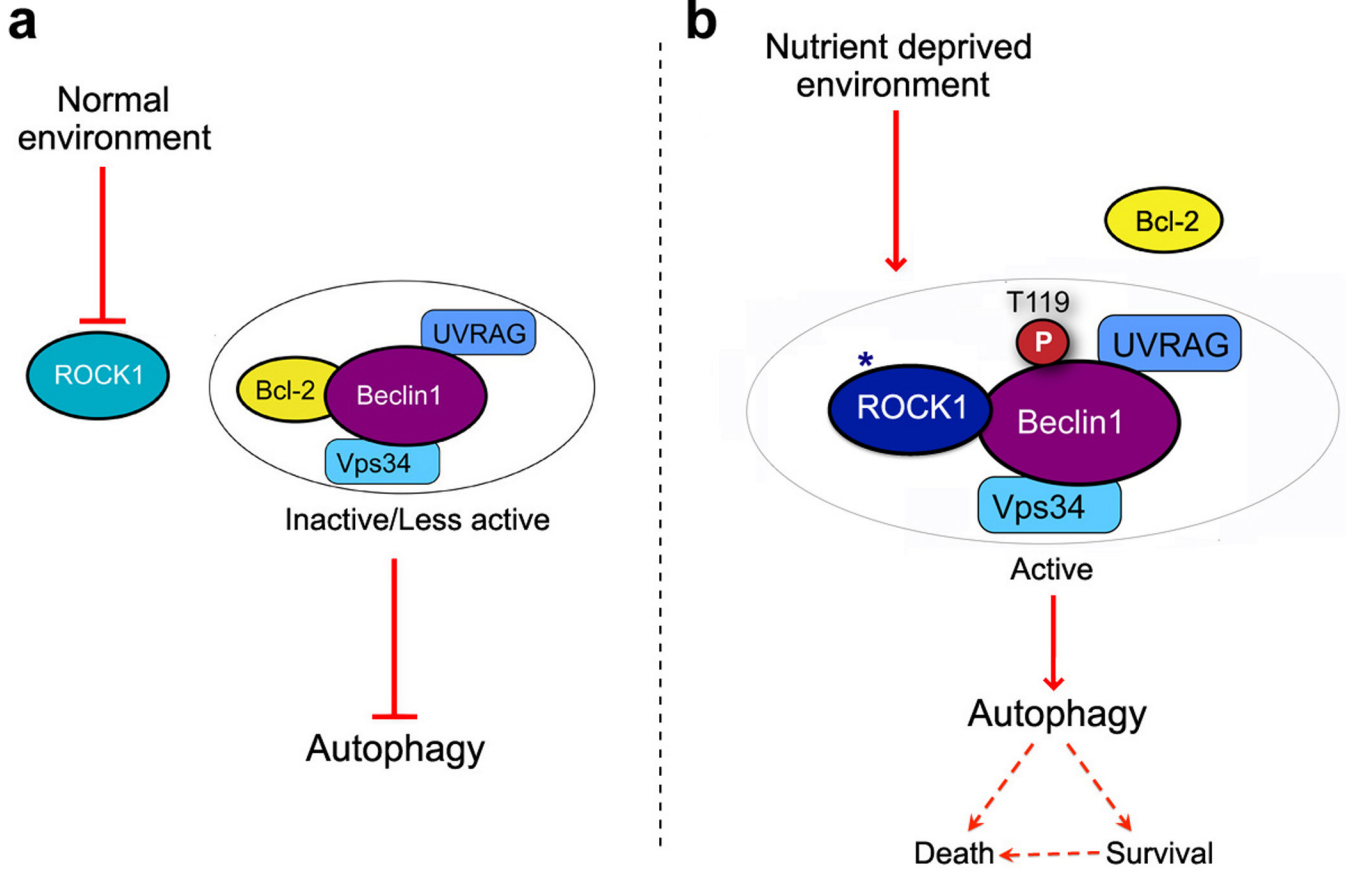


Figure 7. A working model of ROCK1-mediated autophagy during nutrient stress
(a) Normal environment with sufficient glucose and nutrients suppresses ROCK1 activity. Bcl-2 thus associates with Beclin1 core complex (Vps34 and UVRAG) and keeps autophagy in check. **(b)** When the cellular environment is deprived of nutrients, ROCK1 kinase is stimulated. ROCK1 binds and phosphorylates Beclin1 at T119 and disrupts Beclin1-Bcl-2 interaction. Dissociation of Bcl-2 triggers Beclin1 core complex to induce autophagy and maintain a balance between cell survival and apoptosis.