



DIGITAL ACCESS TO SCHOLARSHIP AT HARVARD

Location and Dynamics of the Immunodominant CD8 T Cell Response to SIV nef Immunization and SIVmac251 Vaginal Challenge

The Harvard community has made this article openly available. [Please share](#) how this access benefits you. Your story matters.

Citation	Sasikala-Appukuttan, A. K., H. O. Kim, N. J. Kinzel, J. J. Hong, A. J. Smith, R. Wagstaff, C. Reilly, et al. 2013. "Location and Dynamics of the Immunodominant CD8 T Cell Response to SIV nef Immunization and SIVmac251 Vaginal Challenge." PLoS ONE 8 (12): e81623. doi:10.1371/journal.pone.0081623. http://dx.doi.org/10.1371/journal.pone.0081623 .
Published Version	doi:10.1371/journal.pone.0081623
Accessed	April 17, 2018 4:42:34 PM EDT
Citable Link	http://nrs.harvard.edu/urn-3:HUL.InstRepos:11879343
Terms of Use	This article was downloaded from Harvard University's DASH repository, and is made available under the terms and conditions applicable to Other Posted Material, as set forth at http://nrs.harvard.edu/urn-3:HUL.InstRepos:dash.current.terms-of-use#LAA

(Article begins on next page)

Location and Dynamics of the Immunodominant CD8 T Cell Response to SIV Δ nef Immunization and SIVmac251 Vaginal Challenge

Arun K. Sasikala-Appukuttan¹, Hyeon O. Kim¹, Nikilyn J. Kinzel¹, Jung Joo Hong¹, Anthony J. Smith^{2a}, Reece Wagstaff¹, Cavan Reilly³, Michael Piatak Jr.⁴, Jeffrey D. Lifson⁴, R. Keith Reeves⁵, R. Paul Johnson⁵, Ashley T. Haase², Pamela J. Skinner^{1*}

1 University of Minnesota, Veterinary and Biomedical Sciences Department, Saint Paul, Minnesota, United States of America, **2** University of Minnesota, Microbiology Department, Minneapolis, Minnesota, United States of America, **3** University of Minnesota, School of Public Health, Division of Biostatistics, Minneapolis, Minnesota, United States of America, **4** AIDS and Cancer Virus Program, Leidos Biomedical Research, Inc., (formerly Science Applications International Corporation–Frederick, Inc.), Frederick National Laboratory, Frederick, Maryland, United States of America, **5** Division of Immunology, New England Primate Research Center, Harvard Medical School, Southborough, Massachusetts, United States of America

Abstract

Live-attenuated SIV vaccines (LAVs) have been the most effective to date in preventing or partially controlling infection by wild-type SIV in non-human primate models of HIV-1 transmission to women acting by mechanisms of protection that are not well understood. To gain insights into mechanisms of protection by LAVs that could aid development of effective vaccines to prevent HIV-1 transmission to women, we used in situ tetramer staining to determine whether increased densities or changes in the local distribution of SIV-specific CD8 T cells correlated with the maturation of SIV Δ nef vaccine-induced protection prior to and after intra-vaginal challenge with wild-type SIVmac251. We evaluated the immunodominant Mamu-A1*001:01/Gag (CM9) and Mamu-A1*001:01/Tat (SL8) epitope response in genital and lymphoid tissues, and found that tetramer+ cells were present at all time points examined. In the cervical vaginal tissues, most tetramer+ cells were distributed diffusely throughout the lamina propria or co-localized with other CD8 T cells within lymphoid aggregates. The distribution and densities of the tetramer+ cells at the portal of entry did not correlate with the maturation of protection or change after challenge. Given these findings, we discuss the possibility that changes in other aspects of the immune system, including the quality of the resident population of virus-specific effector CD8 T cells could contribute to maturation of protection, as well as the potential for vaccine strategies that further increase the size and quality of this effector population to prevent HIV-1 transmission.

Citation: Sasikala-Appukuttan AK, Kim HO, Kinzel NJ, Hong JJ, Smith AJ, et al. (2013) Location and Dynamics of the Immunodominant CD8 T Cell Response to SIV Δ nef Immunization and SIVmac251 Vaginal Challenge. PLoS ONE 8(12): e81623. doi:10.1371/journal.pone.0081623

Editor: Jason D. Barbour, University of Hawaii Manoa, United States of America

Received: August 28, 2013; **Accepted:** October 24, 2013; **Published:** December 9, 2013

This is an open-access article, free of all copyright, and may be freely reproduced, distributed, transmitted, modified, built upon, or otherwise used by anyone for any lawful purpose. The work is made available under the Creative Commons CC0 public domain dedication.

Funding: This work was funded by the International AIDS Vaccine Initiative, NIH grant A1080418, in part with federal funds from the National Cancer Institute, National Institutes of Health (NIH), under contract HHSN261200800001E (J.D.L.), by the National Center for Research Resources P51 RR00168, and is currently supported by the Office of Research Infrastructure Programs P51 OD011103. The content of this publication does not necessarily reflect the views or policies of the Department of Health and Human Services or NIH, nor does mention of trade names, commercial products, or organizations imply endorsement by the U.S. Government. The funders had no role in study design, data collection and analysis, decision to publish, or preparation of the manuscript.

Competing Interests: The authors have declared that no competing interests exist.

* E-mail: skinn002@umn.edu

^a Current address: Medical Education Review Program, DeVry Medical International, Freeport, Grand Bahama

Introduction

While there have been heartening advances in antiretroviral therapies that have converted HIV-1 infection in the developed world to a chronic but manageable disease, it is clear that better measures for prevention are needed to contain the continuing growth of a pandemic that has already claimed more than 25 million lives and currently afflicts 34 million people [1]. This is especially the case for women because of the increasing feminization of the pandemic epicenter in sub-Saharan Africa where 75 percent of the HIV-1 infected population ages 15–24 are females [1,2]. Development of a prophylactic vaccine to prevent HIV infection represents the most effective, economical, and universal solution to achieving this goal, but thus far in human trials, vaccine candidates have been at best marginally effective

[3,4]. The SIV-infected rhesus macaque model of HIV is a powerful system being used to gain insights into HIV/SIV pathogenesis and aid in the development of an effective HIV vaccine. Some promising vaccine strategies tested in rhesus macaques include vaccines that mediate sustained presentation of SIV viral epitopes, such as live-attenuated SIVs (LAV) [5] and vaccines based on persistent recombinant herpes virus vectors, including recombinant cytomegalovirus (CMV) vaccines [6,7] and recombinant rhadinovirus vaccines [8]. Arguably the most effective vaccine evaluated to date in this system is the LAV SIV Δ nef which suppressed viral replication in 95% of macaques challenged with wild-type (WT)-SIV, with 50% of challenged animals showing apparent sterilizing immunity [5,9–15], and delayed the acquisition of WT-SIV infection after repeated low

dose challenge [16]. Recent macaque studies using other vaccine approaches have shown promise, including vaccination with recombinant yellow fever virus and recombinant adenovirus vectors expressing immunodominant CD8 T cell epitopes, which demonstrated that virus-specific CD8 T cells can control WT-SIV infection [17]. Many other strategies including using viral DNA, viral particles and/or recombinant non-persisting viral vectors that express viral epitopes have also shown promise in suppressing viral replication and/or preventing infection from WT-SIV (a few of which we cite here) [18–21].

While there has been much recent progress in employing nonhuman primate models to aid development of an effective HIV vaccine, using a variety of different vaccine approaches, the efficacy of the LAV SIV Δ nef remains a benchmark for the field, despite the fact that the underlying mechanism(s) of vaccine protection remain to be elucidated. Thus, the robust protection afforded by intravenous (iv) SIV Δ nef vaccination against WT-SIV challenge by iv, rectal and vaginal routes [5,9–16], supports studies of SIV Δ nef vaccination to identify correlates of protection that could provide insight and principles to guide further development of an effective HIV-1 vaccine. To that end, we investigated and report here an analysis of the densities and locations after SIV Δ nef vaccination of virus-specific CD8 T cells that recognize immunodominant epitopes in Gag and Tat in the genital and lymphoid tissues of rhesus macaques.

The hypothesis underlying these studies was that SIV Δ nef vaccination might protect in part by converting the “too little and too late” CD8 T cell response to these immunodominant epitopes in unvaccinated animals [22,23] to an “enough and soon enough” response in the vaccinated animals, sufficient to contain infection at the portal of entry or the lymphoid tissues (LTs) to which infection subsequently spreads. This hypothesis was founded in previous studies in the SIV-rhesus macaque vaginal challenge model [22,23], which models HIV-1 transmission to women, where the CD8 T cell response was described as “too little and too late” for the following reasons. First, the peak of the immunodominant response occurred after the peak of virus replication in the lymphoid tissues (LT) that are the principal sites of virus production, persistence and pathology, such as the massive depletion of CD4 T cells in the gut, and thus too late to prevent this loss. Second, the magnitude of the CD8 T cell response was also insufficient to achieve the high effector to target cell ratios (E:T) in vivo in systemic LTs that correlate with 100-fold reductions in tissue viral load (VL) compared to peak VLs [24], and thus too little in that sense to control infection. However, in the cervical vaginal tissues, the higher E:T ratios were associated with reductions from peak of this magnitude [24] and thus the response is mainly too late. This latter finding suggested that a resident or rapid responder population of virus-specific CD8 T cells at the portal of entry and throughout the LTs to which infection spreads could be “enough and soon enough” to contain infection locally or after dissemination.

We therefore undertook studies of the location and dynamics of the immunodominant CD8 T cell response to vaccination with SIVmac239- Δ nef and the response in vaccinated animals to high dose vaginal challenge with wild type SIVmac251 (hereafter, WT-SIV) to see if vaccination might induce and maintain a resident or rapid responder population of CD8 T cells that would be enough and soon enough to contain infection at the portal of entry or after dissemination to LTs. We focused on a comparison of samples obtained 5 and 20 weeks after SIV Δ nef vaccination and after vaginal challenge at 20 weeks with WT-SIV. A comparison of 5 and 20 weeks after SIV Δ nef vaccination is pertinent to this study because protection provided by live-attenuated SIV Δ nef vaccina-

tion takes 15–20 weeks to “mature.” Animals challenged with WT-SIV before 15 weeks post-SIV Δ nef vaccination show little to no suppression of viral replication, but when challenged after 15 weeks post-vaccination, 95% of the animals suppress viral replication with 50% showing apparent sterilizing immunity [12,25]. This maturation process suggests involvement of adaptive immune components, including fully developed memory responses, in protection, and thus a CD8 T cell correlate of protection might be identified by comparing SIV-specific CD8 T cells in cervical vaginal tissues and LTs at 5 weeks post-SIV Δ nef vaccination when the animals are not protected, with 20 weeks post-vaccination when there is sterilizing protection in half the animals and significant reductions in VLs in the remainder compared to unvaccinated controls.

Materials and Methods

Ethics statement

The 16 female *Mamu-A1*001:01* (formerly *Mamu A*01* [26]) Indian-derived rhesus macaque monkeys (*Macaca mulatta*) described in this study were housed at the New England Primate Center (NEPRC) in accordance with the regulations of the American Association of Accreditation of Laboratory Animal Care and the standards of the Association for Assessment and Accreditation of Laboratory Animal Care International. All protocols and procedures were approved by the relevant Institutional Animal Care and Use Committee which was the Harvard Medical Area (HMA) Standing Committee on Animals at Harvard Medical School. All animals were housed indoors in an SOP-driven, AAALAC-accredited facility. Husbandry and care met the guidance of the Animal Welfare Regulations, OLAW reporting and the standards set forth in The Guide for the Care and Use of Laboratory Animals. All research animals were enrolled in the NEPRC behavioral management program, including an IACUC-approved plan for Environmental Enrichment for research primates. This program included regular behavioral assessments, and provision of species appropriate manipulanda, and foraging opportunities. This protocol had an IACUC-approved exemption from social housing based on scientific justification. Primary enclosures consisted of stainless steel primate caging provided by a commercial vendor. Animal body weights and cage dimensions were regularly monitored. Overall dimensions of primary enclosures (floor area and height) met the specifications of The Guide for the Care and Use of Laboratory Animals, and the Animal Welfare Regulations (AWR's). Further, all primary enclosures were sanitized every 14 days at a minimum, in compliance with AWRs. Secondary enclosures (room level) met specifications of The Guide with respect to temperature, humidity, lighting and noise level. The animals were provided ad lib access to municipal source water, offered commercial monkey chow twice daily, and offered fresh produce a minimum of three times weekly. Light cycle was controlled at 12/12 hours daily. The animals were subject to twice daily documented observations by trained animal care and veterinary staff, and enrolled in the facility's environmental enrichment, and preventative health care programs. Euthanasia took place at defined experimental endpoints using protocols consistent with the American Veterinary Medical Association (AVMA) guidelines. Animals were first sedated with intramuscular ketamine hydrochloride at 20 mg/kg body followed by sodium pentobarbital (≥ 100 mg/kg) intravenously to achieve euthanasia.

Vaccination and Vaginal challenge

Animals were negative for antibodies to HIV type 2, SIV type D retrovirus, and simian T-cell lymphotropic virus type 1. Animals were vaccinated by infecting intravenously with 25 ng of a stock of SIVmac239 Δ nef supplied by Dr. Ronald Desrosiers (NEPRC), and, when indicated, challenged vaginally twice on the same day (separated by 4 hours) with 10^5 TCID₅₀ of SIVmac251 supplied by Dr. Christopher Miller (CNPRC).

Tissue collection and processing

At the time of euthanasia, genital tissues including, vagina (vestibule, middle, and near cervix), cervix (endo and ecto), uterus, and lymphoid tissues including, genital, mesenteric, axillary, and inguinal lymph nodes, spleen, and ileum were collected from each animal. Freshly dissected tissues were placed in tubes containing chilled RPMI media with heparin (100ug/ml or 18.7 U/ml) added as an RNase inhibitor and were shipped overnight on ice from the New England Primate Research Center to the University of Minnesota.

In situ tetramer staining combined with immunohistochemistry

Animals with *Mamu-A1*001:01* MHC class 1 alleles were selected for this study because, in this model system, immunodominant CD8 T cell responses to Gag and Tat epitopes represent approximately 70% of the total CD8 T cell response [27], and we have MHC tetramer reagents and methods available to stain the immunodominant SIV-specific CD8 T cells in situ. In situ tetramer staining combined with immunohistochemistry was performed similarly as previously described [28,29]. Biotinylated Mamu-A1*001:01 molecules loaded with Gag181–189 CTPY-DINQM (CM9) peptides were purchased from Beckman Coulter Immunomics. Mamu-A1*001:01 molecules loaded with Tat STPESANL (SL8) peptides or an irrelevant negative control peptide FLPSDYFPSV (FLP) from the hepatitis B virus core protein were obtained from the NIH Tetramer Core Facility (hereafter these molecules are referred to as Mamu-A1/Gag, Mamu-A1/Tat, and Mamu-A1/FLP). Tetramers were made by mixing 6 aliquots of FITC-labeled ExtraAvidin (Sigma) with MHC monomers over the course of 8 hours to a final molar ratio of 1:4.5. For tissue sectioning, fresh tissues were embedded in low melt agarose and cut into 200 micron thick sections. For the primary incubation, tissues were incubated with MHC tetramers at a concentration of 0.5 ug/ml in 1 ml of cold phosphate buffered saline containing 100 mg/ml heparin (PBS-H) with 2% normal goat serum at 4°C overnight. Sections were then washed with chilled PBS-H, fixed with 4% paraformaldehyde for 2 hours at room temperature, and again washed with PBS-H. For antibody counterstaining, prior to secondary incubation, tissues were boiled three times in 0.01 M Urea to expose epitopes, then permeabilized and blocked with PBS-H containing 0.3% triton X-100 and 2% normal goat serum for 1 hour. For the secondary incubation, sections were incubated with rabbit anti-FITC antibodies (BioDesign) diluted 1:10,000 in blocking solution at 4°C on a rocking platform overnight. For the tertiary incubation, sections were washed with PBS-H and incubated with Cy3-conjugated goat anti-rabbit antibodies (Jackson ImmunoResearch) diluted 1:5000 in blocking solution for 1 to 3 days, then washed again, post-fixed with 4% paraformaldehyde for 1 h, and mounted on slides with warmed glycerol gelatin (Sigma) containing 4 mg/ml *n*-propyl gallate. Sections were counterstained with several combinations of antibodies during primary, secondary, or tertiary incubations including: primary rat-anti-human CD8 antibodies diluted 1:200

(AbD Serotec clone YTC182.20) or rat-anti-human CD3 antibodies diluted 1:200 (AbD Serotec clone CD3-12) followed by tertiary Cy5-conjugated anti-rat antibodies (Jackson ImmunoResearch) diluted 1:2000, and secondary mouse anti-CD20 antibodies diluted 1:200 (Novacastra clone L26) or mouse anti-human Ki67 diluted 1:200 (Vector clone MM1) followed by tertiary Alexa 488-conjugated goat anti-mouse antibodies (Molecular Probes) diluted 1:2000 and goat anti-human IgM-Dylight 649 (1:2000) (Jackson ImmunoResearch).

Imaging

Confocal images were collected using a FluoView 1000 confocal microscope with a 20 \times objective and 3 μ m z-steps. Confocal z-series were collected from approximately 5 μ m from surface of the tissue section to as deep as the antibody counter-staining penetrated, approximately 35 μ m into the tissue. Three-dimensional montage images of multiple 800 \times 800 pixel 200X Z-scans were created using Olympus FluoView Viewer software.

Quantification of cells

To determine the density of SIV-specific CD8 T cells in tissues, cells stained with Mamu-A1/Gag, Mamu-A1/Tat, and negative control Mamu-A1/FLP tetramers were counted in single z-scan montages of lymphoid and genital tissues. We stepped up and down through the z-scans to distinguish tops and bottoms of cells from non-specific background staining. Olympus FluoView Viewer software was used to delineate tissue areas and count tetramer⁺ cells in delineated areas. Image J software was then used to measure the areas delineated for cell counts. Because tetramer⁺ cells were most highly concentrated within the lamina propria of genital tissues, and because amounts of epithelium, lamina propria and underlying muscularis varied between samples and sections, in genital tissues we focused our quantification on tetramer⁺ cells in the lamina propria. Multiple confocal fields were evaluated for each sample covering 0.7 to 19 mm², and averaging 3.1 mm² in lymphoid tissue samples, and covering 0.23 to 14 mm², averaging 2.2 mm² in genital lamina propria samples. Data are presented as the total numbers of tetramer⁺ cells counted divided by the total area measured for each tissue from each animal. For the determination of the percentage of tetramer⁺ cells that were Ki67⁺, we quantified all of the whole tetramer⁺ cells present in each z-series montage image. We tested for differences between independent groups using a 2 sample t-test with common variance.

SIVmac251 quantification

A real time qRT-PCR assay employing primers that specifically amplify WT-SIVmac251, even in the presence of SIV Δ nef sequences, was used to quantify SIVmac251 in plasma essentially as described [30].

Association of viral load and SIV-specific CD8 T cell concentrations

To test for an association between plasma viral load and Mamu-A1/Gag and Mamu-A1/Tat-binding cell concentration simultaneously, a multivariate linear model was fit to the logarithms of all of the variables with the 2-vector of Mamu-A1/Gag and Mamu-A1/Tat values as the response variable and viral load as the predictor variable. These models allowed for correlation from Mamu-A1/Gag and Mamu-A1/Tat-binding cell levels within the same individual. Parameters were estimated using maximum likelihood and standard errors were obtained by numerically inverting the observed Fisher information matrix and taking the square root of the diagonal entries. Wald tests were used to test for

associations between explanatory variables (Mamu-A1/Gag and Mamu-A1/Tat-binding cell levels) and viral load. This analysis was conducted separately for each tissue. Correlations were estimated using Pearson's correlation coefficient; however, the test for an association was based on the Wald test from the multivariate linear model. Such an approach uses the correlation between Mamu-A1/Gag and Mamu-A1/Tat-binding cells to get a test with improved power as it provides more precise estimates of the parameters.

Results

Experimental Design

The “enough and soon enough” hypothesis predicts: 1) that SIV-delta nef vaccination would elicit/establish a resident or rapid responder population of CD8 T cells located at the right time and place to contain infection following vaginal challenge at the portal of entry, or after dissemination to LTs; and 2) that the resident or responder populations will be distinguished by location, numbers or functions that might correlate with the maturation of protection between 5 and 20 weeks after SIV Δ nef vaccination. We examined these predictions (see Figure 1 for a schematic overview) in 16 *Mamu-A1*001:01* rhesus macaques vaccinated intravenously with SIV Δ nef: after vaccination, but before protection is established, analyzing samples obtained at 2 weeks ($n = 1$ animal) and 5 weeks ($n = 4$ animals) after SIV Δ nef vaccination and after protection has “matured” at 20 weeks ($n = 4$ animals). We also analyzed samples obtained in the first 2 weeks following high dose vaginal WT-SIV challenge at 20 weeks post-SIV Δ nef vaccination ($n = 7$ animals), using in situ tetramer staining (IST) and complementary techniques to determine in genital and lymphoid tissues the location, numbers, and other characteristics of the CD8 T cells specific for immunodominant epitopes in Gag and Tat.

Location of SIV-specific CD8 T cells in situ

We determined the location of immunodominant SIV epitope Gag- and Tat-specific CD8 T cells in cervix, vagina, draining lymph nodes, peripheral lymph nodes, spleen and ileum tissues, using in situ MHC-tetramer staining [28,29] with Mamu-A1/Gag and Mamu-A1/Tat tetramers. As a negative control, tissues were stained with Mamu-A1 tetramers loaded with an irrelevant peptide (Mamu-A1/FLP). T cells and B cells were also visualized in the tissue sections by immunohistochemistry using antibodies

directed against CD8, CD3, and CD20. We detected CD8⁺CD3⁺CD20⁻Mamu-A1/Gag and Mamu-A1/Tat tetramer⁺ T cells distributed amongst other CD8 T cells in the lymphoid and genital tissues from animals evaluated both before and after the predicted maturation of protection, and after challenge with WT-SIV.

At the portal of viral entry in cervical and vaginal tissues, tetramer⁺ cells were predominantly located within the lamina propria (Figure 2), but tetramer⁺ cells were also detected in the epithelial layer in approximately half of the animals at each time point. When detected in the genital epithelium, tetramer⁺ cells were in lower abundance relative to the lamina propria (3–25 fold less), and tended to be most concentrated near the border of the epithelium and lamina propria. The predominant localization of SIV-specific-tetramer⁺ cells in the lamina propria of genital tissues is similar to what we found in genital tissues from non-vaccinated WT-SIV infected rhesus macaques [31] and SHIV 89.6 vaccinated rhesus macaques (P.J. Skinner unpublished results), and this localization is consistent with the previously described localization of CD8 T cells in genital tissues from rhesus macaques [32] and women [33] indicating that the localization of SIV-specific CD8 T cells identified here is not specific for SIV Δ nef vaccination.

In proximal, mid, and distal vagina tissues at 2 weeks post-vaccination, many T and B cells including tetramer⁺ cells surrounded vessels (Figure 3), some of which were clearly arterial. In addition, at all time points, tetramer⁺ cells were located within lymphoid aggregates in the cervix and vagina. These lymphoid aggregates, comprised of predominantly CD8 T cells (Figure 2, and Figure 4), were located throughout the lamina propria from just beneath the epithelium to near the muscularis (Figure 2), as well as within the muscularis, and ranged in size from $\sim 60 \mu\text{m}$ to over $500 \mu\text{m}$ in diameter. There were no obvious distinctions in the location of tetramer⁺ cells in genital tissues over the time course for development and maturation of LAV-SIV Δ nef induced protection, between 5 and 20 weeks post-vaccination, or after challenge with WT-SIV. In lymph nodes, tetramer⁺ cells were primarily located in T cell zones (Figure 5A), whereas in spleen, tetramer⁺ cells were most abundant in the red pulp, with fewer cells located in the T cell zone and B cell follicles in the marginal zones (Figure 5B). In tissue sections of ileum, tetramer⁺ cells were located throughout the lamina propria and Peyer's patches (Figure S1). Within all of the lymphoid tissues, tetramer⁺ cells were often, but not always, in relatively lower abundance or largely absent

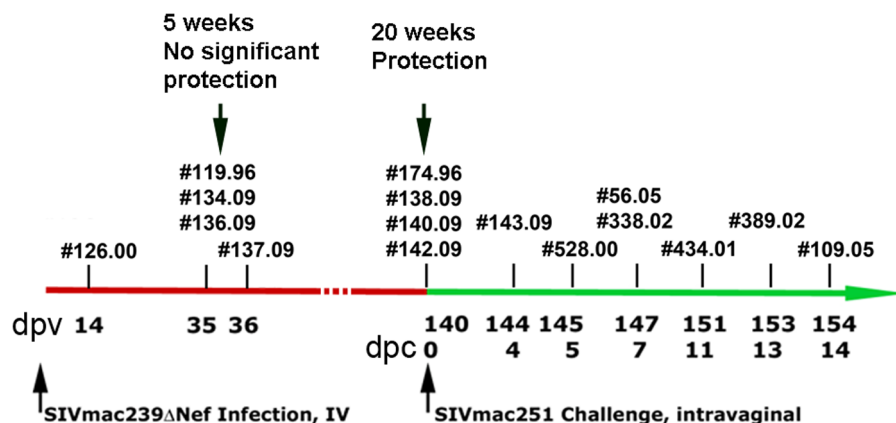


Figure 1. Study overview. *Mamu-A1*001:01* rhesus macaques were vaccinated intravenously with SIVmac239 Δ nef and intravaginally challenged 20 weeks later with WT-SIV. Individual animal numbers are indicated at the day post-SIV Δ nef vaccination (dpv, upper row) or day post-challenge with WT-SIV (dpc, lower row) that animals were evaluated.

doi:10.1371/journal.pone.0081623.g001

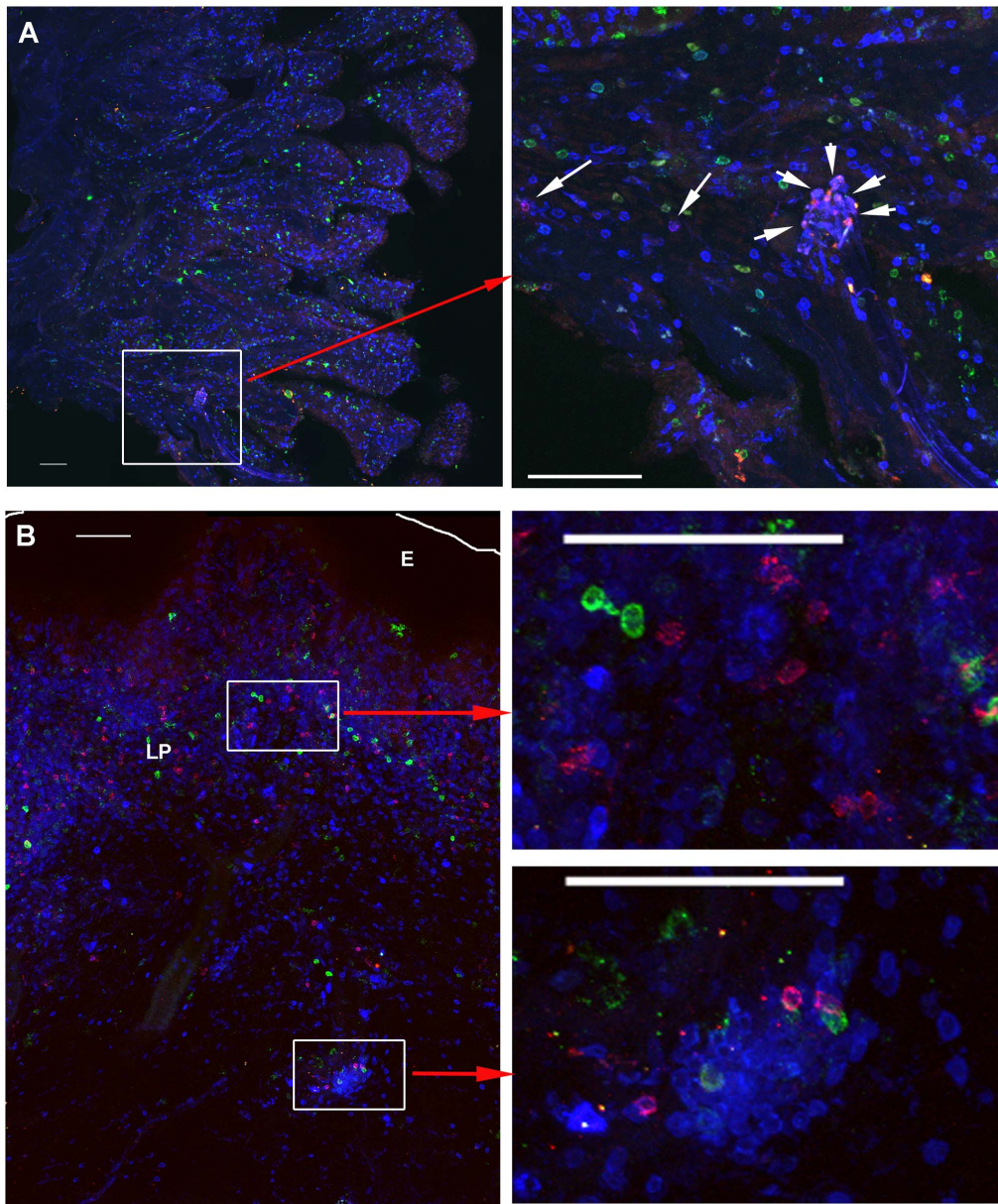


Figure 2. Localization of SIV-specific CD8⁺ T cells in cervix and vagina. A) Top panels show representative images of endocervix from an animal (137.09) at 5 weeks post-SIV- Δ nef vaccination as examples of the low end of the spectrum of levels of tetramer⁺ detected in genital tissues amongst the whole cohort. Mamu-A1/Gag tetramer⁺ cells are red to pink, CD8⁺ T cells are blue, and CD20⁺ cells are green. B) In the bottom panels Mamu-A1/Tat MHC-tetramer-binding cells are red to pink, CD3⁺ T cells are blue, and CD20⁺ B cells are green from a representative image of vagina from animal #338.02, 21 weeks post-SIV- Δ nef vaccination and 7 days following vaginal challenge with WT-SIV, as an example of the higher end of the spectrum of levels of tetramer⁺ cells detected in genital tissues amongst the whole cohort. The edge of the epithelium (E) is indicated with a white line; lamina propria indicated by LP. For both A) and B), the left panel shows a montage of several confocal projected z-series images (projected z-series are images collected at different depths stacked on top of each other), collected with a 20 \times objective. The right panels show enlargements with several red to pink tetramer⁺ cells evident (indicated by arrows in A) localized diffusely as well as within small T cell aggregates. Scale bars = 100 μ m.
doi:10.1371/journal.pone.0081623.g002

from B cell follicles (Figure 5B). When there were tetramer⁺ cells in the follicles, they were often most abundant at the edge adjoining the T cell zone. No observed change in location of tetramer⁺ cells was observed within lymphoid tissues, between 5 and 20 weeks post-vaccination, or after challenge with WT-SIV.

Abundance, activation and proliferative state of SIV-specific CD8 T cells in situ

We determined the population densities and activation and proliferative state of tetramer⁺ SIV-specific CD8 T cells in situ in the lamina propria of cervix and vagina, as well as in draining lymph nodes, peripheral lymph nodes, and spleen, by IST staining, and staining for Ki67 as a marker for activation and proliferation (Figures 6 and 7). Tat-tetramer⁺ cells were less

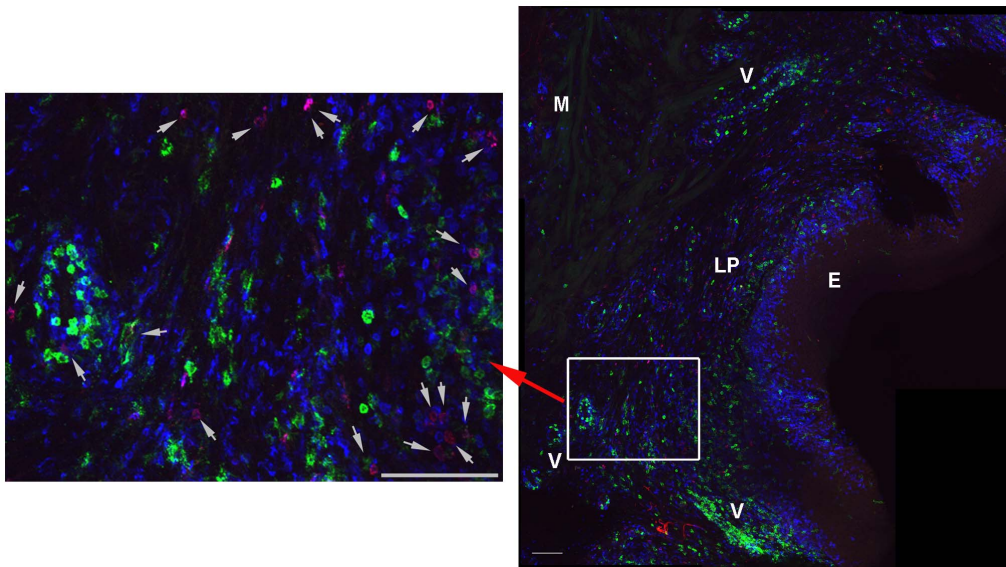


Figure 3. Localization of SIV-specific CD8 T cells in vagina at 14 days post-vaccination. Representative confocal image showing Mamu-A1/Gag tetramer⁺ cells (red), CD8 (blue), and CD20 (green). The right panel shows a montage of projected z-series of several 200 \times fields with the epithelium (E), lamina propria (LP), muscularis (M), and areas with vessels (V) indicated. In the enlarged image on the left, tetramer⁺ cells are indicated with arrows. Scale bars are 100 μ m.
doi:10.1371/journal.pone.0081623.g003

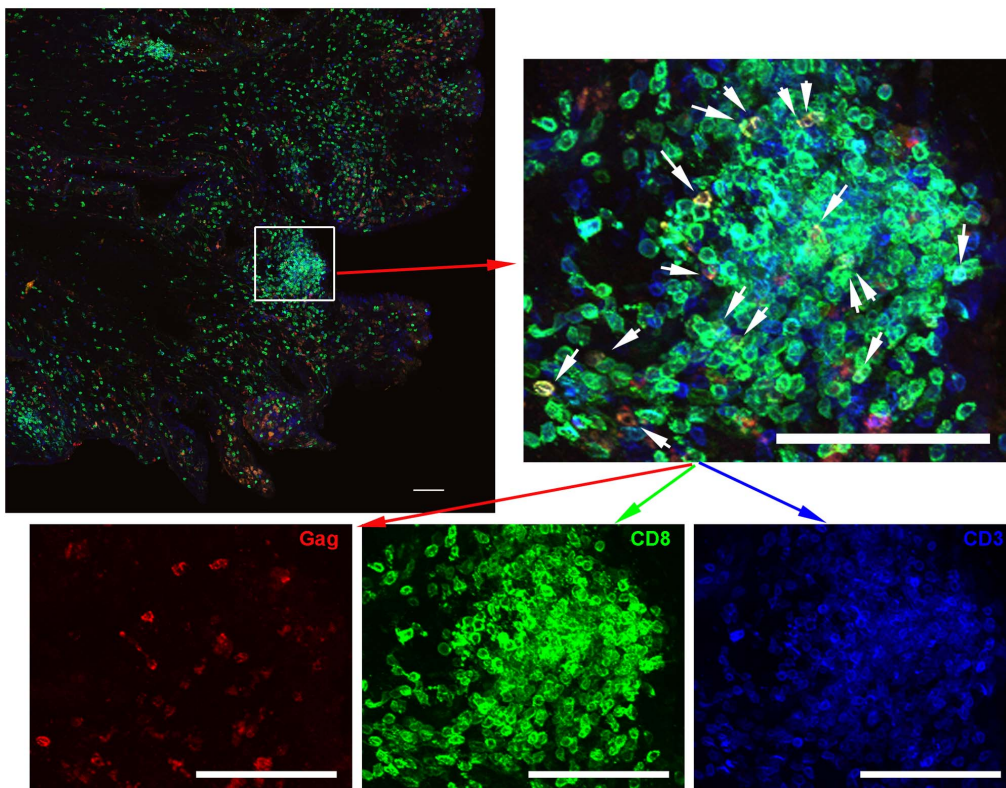


Figure 4. Most CD3⁺ T cells were CD8⁺ in genital lymphoid aggregates. Representative images of endocervix section stained with Mamu-A1/Gag tetramers (red), CD8 antibodies (green), and CD3 antibodies (blue) from animal #338.02. Tetramer⁺ cells are indicated with white arrows in the enlargement. The bottom panels show individual tetramer and antibody stains. Note most CD3⁺ T cells are CD8⁺. The top left panel shows a montage of projected z-series of several 200 \times fields. Scale bars = 100 μ m.
doi:10.1371/journal.pone.0081623.g004

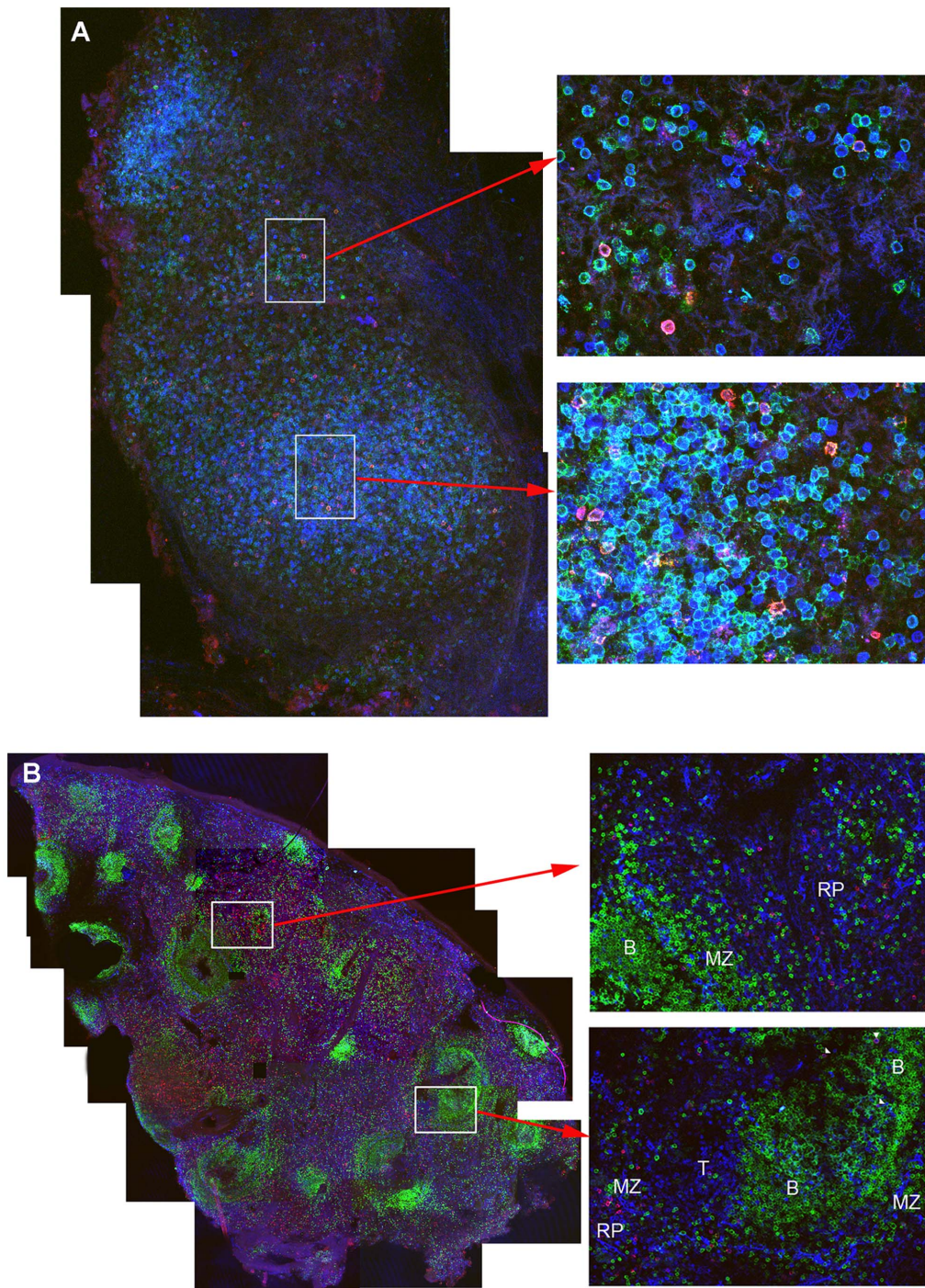


Figure 5. Localization of SIV-specific CD8⁺ T cells in lymph nodes and spleen. The representative images shown in are A) from an axillary lymph node from an animal (119.96) 5 weeks post-SIV- Δ nef vaccination. Mamu-A1/Tat tetramer⁺ cells are red to pink, CD8⁺ T cells are green, and CD3⁺ T cells are blue. The left panel shows a montage of several fields containing projected z-scans collected with a confocal microscope 20 \times objective. Enlargements to the right show individual fields of projected z-scans collected with a 60 \times objective. The representative images shown in B) are from a spleen section from an animal (119.96) at 5 weeks post-SIV Δ nef vaccination. Mamu-A1/Gag tetramer⁺ cells are red to pink colored, CD8⁺ T cells are blue, and CD20⁺ B cells are green. Tetramer⁺CD8⁺ cells localized with other CD8 T cells and were most abundant in the red pulp (RP) and marginal zones (MZ), with relatively fewer located in T cell zones (T) and in B cell follicles (B). The left panel shows a montage of several confocal microscope fields of projected Z-scans stitched together, collected with a 10 \times objective. Enlargements show individual confocal z-scans of single 200 \times fields.

doi:10.1371/journal.pone.0081623.g005

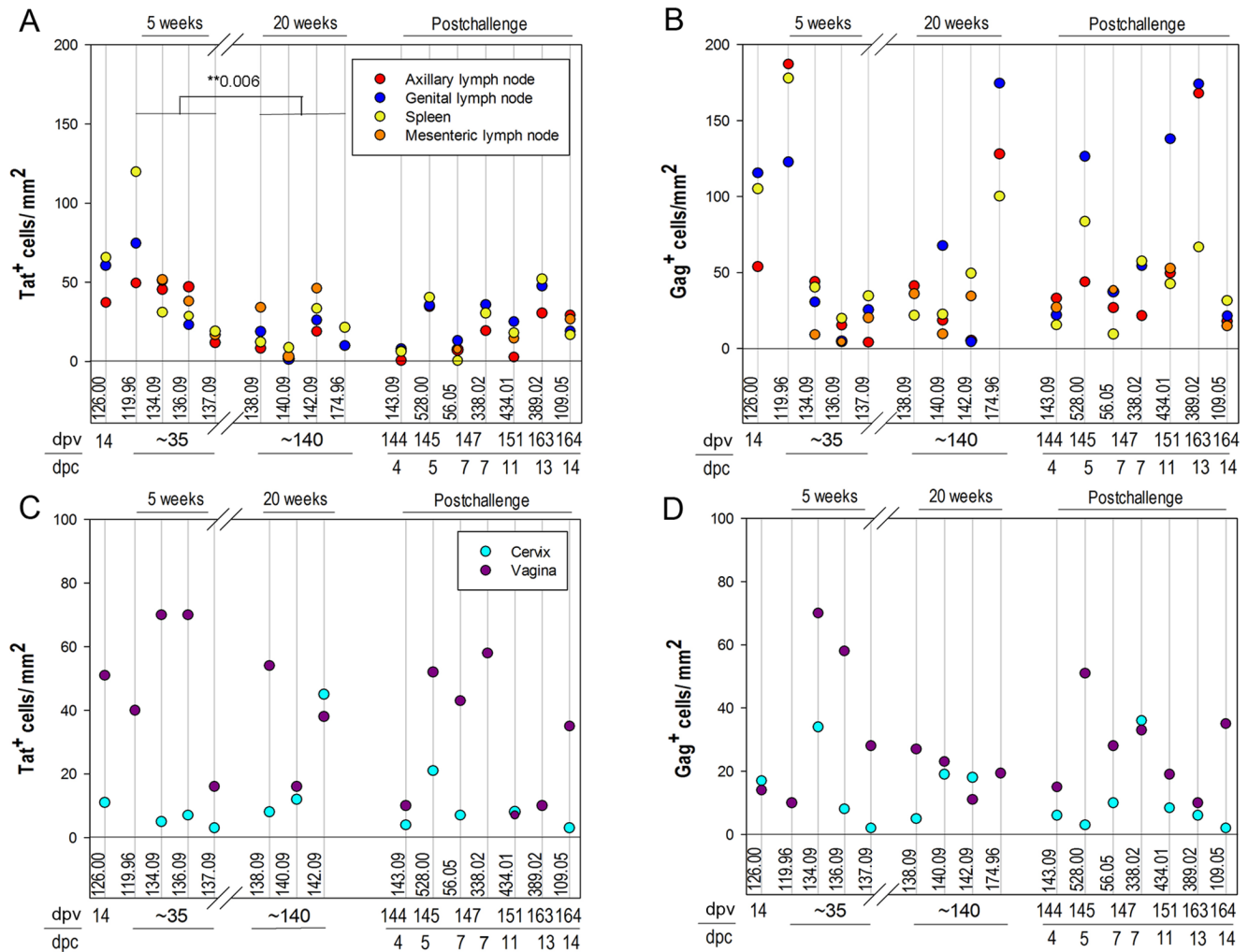


Figure 6. Abundance of SIV-specific CD8 T cells in lymphoid and genital tissues. The number of MHC-tetramer⁺ cells per mm² in lymphoid tissues is presented in panels A) and B) and in the lamina propria of genital tissues in panels C) and D). The tissue density of Mamu-A1/Tat stained cells are shown in A) and C), and Mamu-A1/Gag stained cells shown in B) and D). Animal numbers, days post-SIV Δ nef vaccination (dpv) and days post-challenge (dpc) are indicated below each graph. Negative control sections stained with Mamu-A1/FLP showed a range of 0-3.4 cells/mm² and average of 1.25 cells/mm² in lymphoid tissues, and 0 cells/mm² in the genital tissues. doi:10.1371/journal.pone.0081623.g006

frequent in lymphoid tissues (Figure 6A), but not in cervical vaginal tissues (Figure 6C), at 20 weeks post-vaccination compared to 5 weeks post-vaccination, consistent with initial expansion and then contraction of the immune response associated with the declining SIV Δ nef replication described elsewhere, as well as the evolution of escape in the Tat SL8 epitope (R. K. Reeves et al., ms. in preparation). Expression of the cell activation and proliferation marker Ki67 in SIV-specific CD8 T cells in situ at these sites was also consistent with this interpretation for both in LTs and cervical vaginal tissues (Figure 7). However, remarkably high percentages, averaging 38%, and ranging as high as nearly 80%, of tetramer⁺ cells were Ki67⁺ in the genital tissues (Figure 7C, D). SIV Δ nef RNA was detected within lymphoid tissues of all animals at all time points (A.T. Haase and J.D. Lifson et al., manuscript in preparation), supporting the idea that ongoing SIV Δ nef replication could be sustaining activation and ongoing proliferation of SIV-specific CD8 T cells in LTs and genital tissues. While the abundance of Mamu-A1/Tat-specific tetramer⁺ cells did not increase significantly following vaginal challenge, either in LTs or cervical vaginal tissues, there was a marginally significant increase

in Mamu-A1/Tat-tetramer⁺ Ki67⁺ cells following challenge in cervical vaginal tissues, consistent with a recall response (Figure 7C).

The numbers of Mamu-A1/Gag-tetramer⁺ cells did not contract significantly between 5 and 20 weeks post-SIV Δ nef vaccination (Figure 6B, D), but, in LTs, the frequency of Mamu-A1/Gag-tetramer⁺Ki67⁺ cells did decrease significantly (Figure 7B). However, there was no evidence for a recall response of Mamu-A1/Gag-tetramer⁺ cells from changes in abundance (Figure 6B, D) or increases in Ki67⁺ cells (Figure 7B, D) following vaginal challenge.

Association of viral load and SIV-specific CD8 T cell levels in lymph nodes

We compared levels of WT-SIV RNA in plasma (Table 1) to the tissue densities of Mamu-A1/Gag- and Mamu-A1/Tat-tetramer⁺ T cells detected in tissues to determine if there were correlations between the quantities of virus-specific CD8 T cells and plasma WT-SIV virus load in the three animals (56.05, 434.01, and 389.02) in which WT-SIV was detectable. We found a significant

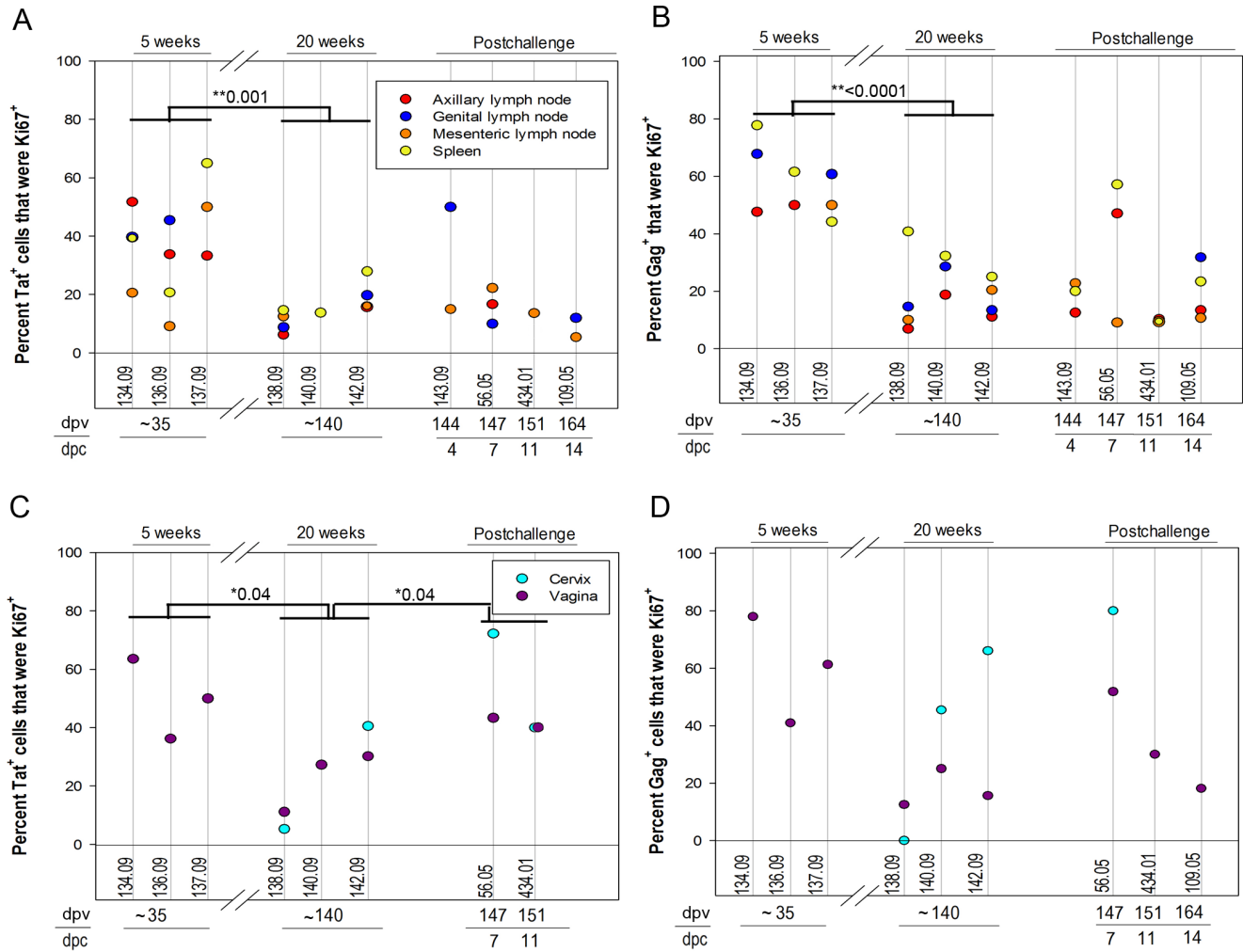


Figure 7. The percentage of tetramer⁺ SIV-specific CD8 T cells that were expressing the proliferation marker Ki67. The percentage of Mamu-A1/Tat tetramer⁺ cells (A and C) and Mamu-A1/Gag tetramer⁺ cells (B and D) that were Ki67⁺ in genital lymph nodes, axillary lymph nodes, mesenteric lymph nodes, and spleen is shown in the top panels and in vagina and cervix is shown in the bottom panels. Animal numbers, days post-SIV Δ nef vaccination (dpv) and days post-challenge with WT-SIV (dpc) at necropsy are indicated below each graph. Significant decreases in the percentage of tetramer stained cells that were Ki67⁺ was observed in animals at 5 weeks (~35 dpi) compared to 20 weeks (~140 dpi) post-SIV Δ nef vaccination. A significant increase in the percentage of Mamu-A1/Tat tetramer⁺ cells was observed in genital tissues during the first two weeks after challenge compared to animals just prior to challenge compared to the first two weeks after challenge in lymphoid tissues or with Mamu-A1/Gag staining in genital tissues. *p-values are indicated. No significant difference was observed with Mamu-A1/Gag or Mamu-A1/Tat tetramer⁺ cells just prior to challenge compared to the first two weeks after challenge in lymphoid tissues or with Mamu-A1/Gag staining in genital tissues.

doi:10.1371/journal.pone.0081623.g007

positive association between Mamu-A1/Gag binding cells within the lymph nodes and plasma viral loads (genital $p=0.025$, mesenteric $p=0.00032$, and axillary $p=0.017$) (Figure 8); and levels of Mamu-A1/Gag and Mamu-A1/Tat binding cells within individual animals were highly associated ($p=0.0072$).

Discussion

In this study, we determined by IST staining, the number and location of tetramer⁺ SIV-specific CD8 T cells at the critical early times and sites in the genital and lymphoid tissues where respectively infection begins and to which it is disseminated in unvaccinated animals. We were particularly interested to determine if SIV Δ nef vaccination would convert the previously described “too little, too late” CD8 T cell response observed in unvaccinated animals [22,23] to an “enough and soon enough” response in which virus-specific CD8 T cells would constitute a

resident or rapid responder population at the portal of entry to control infection there, or contain infection after virus spread to the lymphoid tissues. The detection reported here of Mamu-A1/Gag and Mamu-A1/Tat tetramer⁺ CD8 T cells distributed amongst other CD8 T cells in lymphoid and genital tissues at all time points examined, including the time of vaginal challenge, stands in stark contrast to our previous observation in unvaccinated vaginally inoculated animals in which SIV-specific CD8 T cells were not detectable in genital or lymphoid tissues until the second week following vaginal inoculation [22], and is consistent with the concept of a resident population of cells operating at an advantage against the small populations of infected cells in the early stages of infection. Our findings are consistent too with our previous studies in animals vaccinated with an attenuated SHIV and vaginally challenged with SIV in which with a resident population of virus-specific CD8 T cells in genital and lymphoid tissues was associated with protection [34].

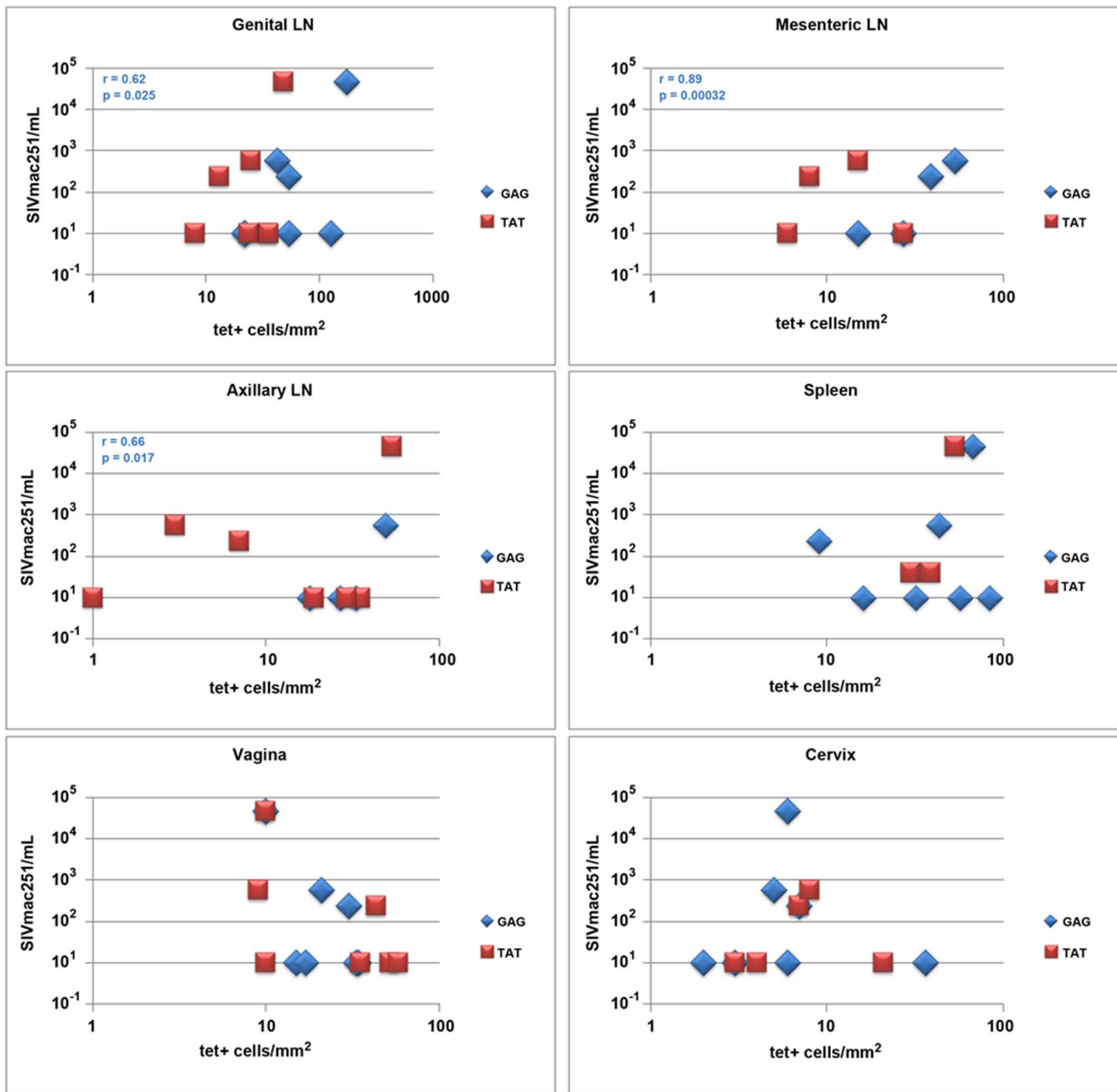


Figure 8. Comparison of plasma WT-SIV virus load and tissue densities of tetramer⁺ SIV-specific CD8 T cells. Tissue densities of MamuA1/Gag (blue) and MamuA1/Tat (red) tetramer⁺ cells for each tissue including genital, mesenteric, and axillary lymph nodes, spleen, vagina and cervix compared to levels of WT-SIV in plasma. Plasma viral load value listed as 10 were below the limits of detection of the assay. A significant positive association was observed between the plasma viral load and MamuA1/Gag tetramer⁺ cells in lymph nodes. doi:10.1371/journal.pone.0081623.g008

The numbers and locations of the tetramer⁺ cells, however, cannot by themselves account for the maturation of protection between 5 and 20 weeks post-vaccination, since the decrease between 5 and 20 weeks in the numbers of tetramer⁺ cells, and tetramer⁺Ki67⁺ cells is inversely related to the increasing protection, and is most consistent with the contraction phase of an immune response that parallels the declining levels of SIVΔnef replication in the tissues. Furthermore, the density of the virus-specific CD8 T cell population patrolling the portal of entry in the vaccinated animals is at least five-fold smaller than the density of the populations achieved by three weeks following vaginal

inoculation in unvaccinated animals that was associated with 50 to 100-fold reductions in tissue VL from peak levels [24].

Virus-specific CD8 T cells, nonetheless, could be involved in the maturation of protection between 5 and 20 weeks in two ways. First, there could be a change in the “quality” of the CD8 T cells as effectors that correlates at 20 weeks with phenotypic changes in the virus-specific CD8 T cells. Second, there could be a change in non-T cell immune components of the immune system such as the maturation of a vaccine-induced antibody response at the portal of viral entry that might help reduce the establishment and expansion of founder populations of infected cells, thereby creating an

Table 1. Copies of WT SIVmac251 RNA per ml plasma.

Animal ID	Days post-challenge WT SIVmac251	Plasma VL
143-09	4 & 5	<30
528-00		<40
338-02	7	<40
56-05		230
434-01	11	580
389-02	14	4.6 × 10 ⁴
109-05		<30

<30 and 40 were the limits of detection of the assay.
doi:10.1371/journal.pone.0081623.t001

environment in which virus-specific CD8 T cells would be operating at numerically superior numbers compared to any infected targets in the early stages of infection at 20 weeks but not at 5 weeks. Paradoxically, in this hypothetical reconstruction of the correlates of the maturation of protection, the marginally significant increase in Tat tetramer⁺ cells at the portal of entry, and positive associations between plasma VL and tetramer⁺ cells in lymphoid tissues could actually represent a failure of first line defenses to successfully fully contain infection. The role of the virus-specific CD8 T cell then becomes the more conventional one of partial control of systemic infection, with the increased levels of tetramer⁺ cells reflecting cells responding to antigenic drive from the breakthrough infection with the challenge virus. It will thus be of interest in future studies to design vaccine strategies that would be more effective than SIV Δ nef in inducing and maintaining a

larger population of effector CTLs that would work in concert with the local humoral immune response to fully contain and eliminate infected cells at the portal of entry.

Supporting Information

Figure S1 Localization of SIV-specific CD8 T cells in ileal Peyer's patches. The representative images shown are from animal #174.96 stained with Mamu-A1/gag tetramers (red), CD20 antibodies (green), and CD3 antibodies (blue). Tetramer⁺ cells were localized throughout the Peyer's patches of ileum tissue sections with other T cells around as well as within B cell follicles. The left shows a montage of several confocal Z-scan fields stitched together, collected with a 20× objective.
(TIF)

Acknowledgments

We thank, Dr. David Masopust for critical review of this manuscript; Dr. Ron Desrosiers for providing SIV Δ nef; Dr. Chris Miller for providing SIVmac251; Jacqueline Gillis, Fay Eng Wong, and Elizabeth Curran for assistance with tissue processing; Dr. Angela Carville and other members of the NEPRC Division of Veterinary Resources for their expert animal care; and Jake Kurth, Mohamed Ameen, and Tammy Nguyen for assistance with confocal image collection; and the NIH Tetramer Facility for providing MHC monomers used in this study.

Author Contributions

Conceived and designed the experiments: PJS ATH RPJ RKR JDL MPJ CR. Performed the experiments: AKS HOK NJK JJH AJS RW CR MP RKR. Analyzed the data: AKS HOK NJK JJH AJS RW CR MP JDL RPJ ATH PJS. Wrote the paper: PJS ATH RPJ JDL AKS HOK NJK JJH AJS RW CR MP.

References

- UNAIDS. (2012) Global report: UNAIDS report on the global AIDS epidemic 2012.
- Quinn TC, Overbaugh J. (2005) HIV/AIDS in women: An expanding epidemic. *Science* 308: 1582–1583. doi:10.1126/science.1112489.
- Fauci AS, Johnston MI, Dieffenbach CW, Burton DR, Hammer SM, et al. (2008) HIV vaccine research: The way forward. *Science* 321: 530–532. doi:10.1126/science.1161000.
- Corey L, Nabel GJ, Dieffenbach C, Gilbert P, Haynes BF, et al. (2011) HIV-1 vaccines and adaptive trial designs. *Sci Transl Med* 3: 79p13. doi:10.1126/scitranslmed.3001863.
- Koff WC, Johnson PR, Watkins DI, Burton DR, Lifson JD, et al. (2006) HIV vaccine design: Insights from live attenuated SIV vaccines. *Nat Immunol* 7: 19–23.
- Hansen SG, Jr MP, Ventura AB, Hughes CM, Gilbride RM, et al. (2013) Immune clearance of highly pathogenic SIV infection. *Nature*. doi:10.1038/nature12519.
- Hansen SG, Ford JC, Lewis MS, Ventura AB, Hughes CM, et al. (2011) Profound early control of highly pathogenic SIV by an effector memory T-cell vaccine. *Nature* 473: 523–527. doi:10.1038/nature10003.
- Bilello JP, Manrique JM, Shin YC, Lauer W, Li W, et al. (2011) Vaccine protection against simian immunodeficiency virus in monkeys using recombinant gamma-2 herpesvirus. *J Virol* 85: 12708–12720. doi:10.1128/JVI.00865-11.
- Daniel MD, Kirchoff F, Czajak SC, Sehgal PK, Desrosiers RC. (1992) Protective effects of a live attenuated SIV vaccine with a deletion in the nef gene. *Science* 258: 1938–1941.
- Johnson RP, Lifson JD, Czajak SC, Cole KS, Manson KH, et al. (1999) Highly attenuated vaccine strains of simian immunodeficiency virus protect against vaginal challenge: Inverse relationship of degree of protection with level of attenuation. *J Virol* 73: 4952–4961.
- Reynolds MR, Weiler AM, Weisgrau KL, Piaskowski SM, Furlott JR, et al. (2008) Macaques vaccinated with live-attenuated SIV control replication of heterologous virus. *J Exp Med* 205: 2537–2550.
- Connor RI, Montefiori DC, Binley JM, Moore JP, Bonhoeffer S, et al. (1998) Temporal analyses of virus replication, immune responses, and efficacy in rhesus macaques immunized with a live, attenuated simian immunodeficiency virus vaccine. *J Virol* 72: 7501–7509.
- Johnson RP. (1999) Live attenuated AIDS vaccines: Hazards and hopes. *Nat Med* 5: 154–155. doi:10.1038/5515.
- Tenner-Racz K, Stahl Hennig C, Uberla K, Stoiber H, Ignatius R, et al. (2004) Early protection against pathogenic virus infection at a mucosal challenge site after vaccination with attenuated simian immunodeficiency virus. *Proc Natl Acad Sci U S A* 101: 3017–3022. doi:10.1073/pnas.0308677101.
- Wyand MS, Manson K, Montefiori DC, Lifson JD, Johnson RP, et al. (1999) Protection by live, attenuated simian immunodeficiency virus against heterologous challenge. *J Virol* 73: 8356–8363.
- Reynolds MR, Weiler AM, Piaskowski SM, Kolar HL, Hessel AJ, et al. (2010) Macaques vaccinated with simian immunodeficiency virus SIVmac239Delta nef delay acquisition and control replication after repeated low-dose heterologous SIV challenge. *J Virol* 84: 9190–9199. doi:10.1128/JVI.00041-10.
- Mudd PA, Martins MA, Ericson AJ, Tully DC, Power KA, et al. (2012) Vaccine-induced CD8⁺ T cells control AIDS virus replication. *Nature* 491: 129–133. doi:10.1038/nature11443.
- Manrique M, Kozlowski PA, Cobo-Molinós A, Wang SW, Wilson RL, et al. (2011) Long-term control of simian immunodeficiency virus mac251 viremia to undetectable levels in half of infected female rhesus macaques nasally vaccinated with simian immunodeficiency virus DNA/recombinant modified vaccinia virus ankara. *J Immunol* 186: 3581–3593. doi:10.4049/jimmunol.1002594.
- Barouch DH, Liu J, Li H, Maxfield LF, Abbink P, et al. (2012) Vaccine protection against acquisition of neutralization-resistant SIV challenges in rhesus monkeys. *Nature* 482: 89–93. doi:10.1038/nature10766.
- Patel V, Jalah R, Kulkarni V, Valentin A, Rosati M, et al. (2013) DNA and virus particle vaccination protects against acquisition and confers control of viremia upon heterologous simian immunodeficiency virus challenge. *Proc Natl Acad Sci U S A* 110: 2975–2980. doi:10.1073/pnas.1215393110.
- Liu J, O'Brien KL, Lynch DM, Simmons NL, La Porte A, et al. (2009) Immune control of an SIV challenge by a T-cell-based vaccine in rhesus monkeys. *Nature* 457: 87–91. doi:10.1038/nature07469.
- Reynolds MR, Rakasz E, Skinner PJ, White C, Abel K, et al. (2005) CD8⁺ T-lymphocyte response to major immunodominant epitopes after vaginal exposure to simian immunodeficiency virus: Too late and too little. *J Virol* 79: 9228–9235.
- Miller CJ, Li Q, Abel K, Kim EY, Ma ZM, et al. (2005) Propagation and dissemination of infection after vaginal transmission of simian immunodeficiency virus. *J Virol* 79: 9217–9227.
- Li Q, Skinner PJ, Ha SJ, Duan L, Mattila TL, et al. (2009) Visualizing antigen-specific and infected cells in situ predicts outcomes in early viral infection. *Science* 323: 1726–1729.

25. Johnson RP, Desrosiers RC. (1998) Protective immunity induced by live attenuated simian immunodeficiency virus. *Curr Opin Immunol* 10: 436–443.
26. de Groot NG, Otting N, Robinson J, Blancher A, Lafont BA, et al. (2012) Nomenclature report on the major histocompatibility complex genes and alleles of great ape, old and new world monkey species. *Immunogenetics* 64: 615–631. 10.1007/s00251-012-0617-1.
27. Mothe BR, Horton H, Carter DK, Allen TM, Liebl ME, et al. (2002) Dominance of CD8 responses specific for epitopes bound by a single major histocompatibility complex class I molecule during the acute phase of viral infection. *J Virol* 76: 875–884.
28. Skinner PJ, Daniels MA, Schmidt CS, Jameson SC, Haase AT. (2000) Cutting edge: In situ tetramer staining of antigen-specific T cells in tissues. *J Immunol* 165: 613–617.
29. Skinner PJ, Haase AT. (2005) In situ staining using MHC class I tetramers. *Curr Protoc Immunol* Chapter 17: Unit 17.4.
30. Salisch NC, Kaufmann DE, Awad AS, Reeves RK, Tighe DP, et al. (2010) Inhibitory TCR coreceptor PD-1 is a sensitive indicator of low-level replication of SIV and HIV-1. *J Immunol* 184: 476–487. 10.4049/jimmunol.0902781.
31. Hong JJ, Reynolds MR, Mattila TL, Hage A, Watkins DI, et al. (2009) Localized populations of CD8 MHC class I tetramer SIV-specific T cells in lymphoid follicles and genital epithelium. *PLoS One* 4: e4131. 10.1371/journal.pone.0004131; 10.1371/journal.pone.0004131.
32. Miller CJ, McChesney M, Moore PF. (1992) Langerhans cells, macrophages and lymphocyte subsets in the cervix and vagina of rhesus macaques. *Lab Invest* 67: 628–634.
33. Johansson EL, Rudin A, Wassen L, Holmgren J. (1999) Distribution of lymphocytes and adhesion molecules in human cervix and vagina. *Immunology* 96: 272–277.
34. Genesca M, Skinner PJ, Bost KM, Lu D, Wang Y, et al. (2008) Protective attenuated lentivirus immunization induces SIV-specific T cells in the genital tract of rhesus monkeys. *Mucosal Immunol* 1: 219–228.