



DIGITAL ACCESS TO SCHOLARSHIP AT HARVARD

Lactadherin Inhibits Secretory Phospholipase A2 Activity on Pre-Apoptotic Leukemia Cells

The Harvard community has made this article openly available.
[Please share](#) how this access benefits you. Your story matters.

Citation	Nyegaard, Steffen, Valerie A. Novakovic, Jan T. Rasmussen, and Gary E. Gilbert. 2013. "Lactadherin Inhibits Secretory Phospholipase A2 Activity on Pre-Apoptotic Leukemia Cells." PLoS ONE 8 (10): e77143. doi:10.1371/journal.pone.0077143. http://dx.doi.org/10.1371/journal.pone.0077143 .
Published Version	doi:10.1371/journal.pone.0077143
Accessed	February 19, 2015 2:52:56 PM EST
Citable Link	http://nrs.harvard.edu/urn-3:HUL.InstRepos:11879155
Terms of Use	This article was downloaded from Harvard University's DASH repository, and is made available under the terms and conditions applicable to Other Posted Material, as set forth at http://nrs.harvard.edu/urn-3:HUL.InstRepos:dash.current.terms-of-use#LAA

(Article begins on next page)

Lactadherin Inhibits Secretory Phospholipase A₂ Activity on Pre-Apoptotic Leukemia Cells

Steffen Nyegaard^{1,2}, Valerie A. Novakovic², Jan T. Rasmussen^{1*}, Gary E. Gilbert²

1 Department of Molecular Biology, Aarhus University, Aarhus C, Denmark, **2** Departments of Medicine, Veterans Administration Boston Healthcare System, Brigham and Women's Hospital and Harvard Medical School, Boston, Massachusetts, United States of America

Abstract

Secretory phospholipase A₂ (sPLA₂) is a critical component of insect and snake venoms and is secreted by mammalian leukocytes during inflammation. Elevated secretory PLA₂ concentrations are associated with autoimmune diseases and septic shock. Many sPLA₂'s do not bind to plasma membranes of quiescent cells but bind and digest phospholipids on the membranes of stimulated or apoptotic cells. The capacity of these phospholipases to digest membranes of stimulated or apoptotic cells correlates to the exposure of phosphatidylserine. In the present study, the ability of the phosphatidyl-L-serine-binding protein, lactadherin to inhibit phospholipase enzyme activity has been assessed. Inhibition of human secretory phospholipase A₂-V on phospholipid vesicles exceeded 90%, whereas inhibition of *Naja mossambica* sPLA₂ plateaued at 50–60%. Lactadherin inhibited 45% of activity of *Naja mossambica* sPLA₂ and >70% of human secretory phospholipase A₂-V on the membranes of human NB4 leukemia cells treated with calcium ionophore A23187. The data indicate that lactadherin may decrease inflammation by inhibiting sPLA₂.

Citation: Nyegaard S, Novakovic VA, Rasmussen JT, Gilbert GE (2013) Lactadherin Inhibits Secretory Phospholipase A₂ Activity on Pre-Apoptotic Leukemia Cells. PLoS ONE 8(10): e77143. doi:10.1371/journal.pone.0077143

Editor: Bruno Lourenco Diaz, Universidade Federal do Rio de Janeiro, Brazil

Received: May 13, 2013; **Accepted:** August 21, 2013; **Published:** October 23, 2013

This is an open-access article, free of all copyright, and may be freely reproduced, distributed, transmitted, modified, built upon, or otherwise used by anyone for any lawful purpose. The work is made available under the Creative Commons CC0 public domain dedication.

Funding: This study was funded by Arla Foods (amba) (<http://www.arla.dk/>), Aarhus University (<http://www.au.dk/en/>) and The Danish Council for Independent Research | Natural Sciences (FNU) (<http://fivu.dk/en>) and a Veterans Administration Merit Award (http://www.research.va.gov/services/csr/d/#.UYp_kcozooE) to GEG. The funders had no role in study design, data collection and analysis, decision to publish, or preparation of the manuscript.

Competing Interests: SN was partly funded by a commercial source (Arla foods (AMBA)). This does not alter the authors' adherence to all the PLOS ONE policies on sharing data and materials.

* E-mail: jatr@mb.au.dk

Introduction

Secretory phospholipase A₂ (sPLA₂) is a nine-member family of 16–18 kDa enzymes with five to eight disulfide bonds. These Ca²⁺-dependent enzymes hydrolyze *sn*-2 esters of phospholipid molecules via an Asp-His diad [1–3]. The action of sPLA₂ occurs in two phases. First, the sPLA₂ binds to a bilayer and then the bound molecule continues predominantly in scooting mode, cleaving multiple phospholipid substrate molecules without dissociating from the membrane [4]. A substantial portion of membrane and phospholipid specificity is exhibited in the initial binding step. Thus, one mechanism of inhibiting activity of secretory phospholipase A₂ is via competition for the initial membrane binding sites.

Of the family of sPLA₂'s, three are of particular interest in relation to inflammation, namely group IIA (hsPLA₂-IIA), group V and group X. Group IIA (also known as synovial sPLA₂ or non-pancreatic PLA₂) is a secreted phospholipase originally found and purified from synovial fluid of rheumatoid arthritis patients and correlates with sepsis as well as autoimmune disease [5–10]. The basic group IIA sPLA₂'s are highly selective for anionic phospholipids, with phosphatidylserine (PS) as an important phospholipid target for efficient plasma membrane docking [4,11,12]. Comparably, group V is closely related to group IIA [13], but more neutral and maintains efficient docking via a tryptophan in the docking interface [14,15]. In a mechanistically similar fashion, group X exhibits more hydrophobic residues allowing docking to and hydrolysis of zwitterionic phospholipids

like phosphatidylcholine and is largely unaffected by PS exposure [16]. Together, the native charge as well as interface residues largely account for the preferred substrate of these three enzymes, with group V and X more readily binding and cleaving zwitterionic substrates and generating the gateway molecule of eicosanoid synthesis, arachidonic acid, as compared to group IIA [17,18].

Although all three isoforms are relevant in inflammation, group V sPLA₂ is a good candidate as it depends on both PS dependent and hydrophobic docking mechanisms while also yielding substantial arachidonic acid on leukocyte cell membranes [14,15,19,20]. As reviewed by Murakami and Lambeau, *in vivo* studies on group V sPLA₂ have expanded on the understanding of the role of group V sPLA₂ in inflammation [21,22]. Recent studies have shown group V to act in a proinflammatory fashion as expected from the higher arachidonic acid release as compared to group IIA, with group V being upregulated in asthma and showing a proinflammatory dose-response relationship upon aerosol administration of sPLA₂-V [23]. Group V knock-out mice have however revealed an anti-inflammatory effect in a disease and tissue specific manner with decreased phagocytosis of IgG-opsonized sheep red blood cells is impaired in group V *-/-* macrophages [24] and a protective effect in K/BxN autoantibody-induced inflammatory arthritis [10]. Taken together, these findings indicate that inflammation originating from excessive sPLA₂ activity should be addressed in a disease and tissue specific manner to avoid adverse effects and that a systemic therapeutic seems unlikely [25–27].

The inducing effect of PS on group IIA and V activity is minimized in quiescent cells by aminophospholipid translocases which keep PS sequestered on the inner leaflet of the plasma membranes of quiescent cells making it inaccessible to secretory phospholipase A₂ [28–31]. PS-exposure on the outer leaflet of the plasma membrane is observed starting in early apoptosis as a response to cellular stress [32,33]. Accordingly, it has been demonstrated that PS-exposure influences the production of arachidonic acid and thereby synthesis of proinflammatory downstream products like leukotrienes and prostaglandins [34–37]. These cyto- and chemokines are an important part of the inflammatory cascade leading to increased vascular permeability, recruitment of leukocytes, modulation of clotting, and induced mast cell chemokine production [38]. Thus, inflammatory function of secretory phospholipase A₂ is linked to cell stimulation and apoptosis via PS exposure.

Studies of the relationship of PS exposure to activity of PLA₂'s can be aided by reagents that report PS exposure as well as those that block PS, preventing access of PLA₂. Accordingly, it has been shown that lactadherin (also called MFG-E8) is a sensitive and selective probe for PS, with the bovine ortholog being the most extensively studied [39–42]. Bovine lactadherin is a 409 amino acid protein that can be purified as two glycosylation variants (47 and 52 kDa) from bovine milk. This peripheral bound membrane protein is composed of two N-terminal EGF-like domains, with an integrin binding RGD sequence in the EGF-2 domain [40,43]. Tandem discoidin-like domains, C1 and C2, mediate membrane binding. Lactadherin exhibits a strong affinity for PS-containing membranes with a $K_d \sim 0.08\text{--}4$ nM [42,43]. Lactadherin also displays stereospecific binding to phosphatidyl-L-serine and preference for convex membranes. Membrane binding of lactadherin is not Ca²⁺-dependent which further improves its value for monitoring and blocking exofacial PS [41,44–46]. There are structural and functional similarities between the C1 and C2 domains of lactadherin and those of blood coagulation factors V and VIII [39,41,42]. The structural homology of lactadherin with factor V and factor VIII correlates with the capacity of lactadherin to compete for PS-containing membrane binding sites and to function as a potent anticoagulant [45]. The integrin and PS binding enables lactadherin to operate as an opsonin, by bridging apoptotic cells and vesicular debris, with exposed PS, to phagocytic immune cells [47,48].

The research presented in this study aims at investigating the extent to which lactadherin affects the activity of sPLA₂. Accordingly, activity was studied on vesicles of varying composition and size as well as on immortalized, human NB4 leukemia cells. The results indicate that lactadherin inhibits the enzymatic activity of phospholipase A₂-V and, to a lesser extent, a snake venom phospholipase A₂.

Materials and Methods

Materials

Phosphatidylcholine (PC, egg yolk), phosphatidylethanolamine (PE, egg yolk) and phosphatidyl-L-serine (PS porcine brain) were purchased from Avanti Polar Lipids (AL, USA). 1,2-bis-(4,4-difluoro-5,7-dimethyl-4-bora-3a,4a-diaza-s-indacene-3-undecanoyl)-sn-glycero-3-phosphocholine (bis-BODIPY FL C11-PC) was from Life technologies (NY, USA). Fatty acid free bovine serum albumin (BSA) was from EMD biosciences (Germany). Human factor Xa and prothrombin were purchased from Enzyme Research Laboratories (IN, USA), factor Va was purchased from Haematologic Technologies Inc. (VT, USA), and S-2238 thrombin chromogenic substrate from Diapharma

(OH, USA). Calcium ionophore A23187, propidium iodide (PI) and *Naja mossaambica* venom secretory phospholipase A₂ (nmPLA₂) were purchased from Sigma-Aldrich (MO, USA). Recombinant human secretory phospholipase A₂ group V (hsPLA₂-V) was purchased from Cayman chemical (MI, USA). Bovine lactadherin was purified and labeled with fluorescein isothiocyanate (FITC) as described previously [39,49]. Human promyelocytic leukemia NB4 cells [50] were a generous gift from Dr J. O'Kelly (Los Angeles, CA). Acrylodan-labeled Intestinal Fatty Acid Binding Protein (ADIFAB) was purchased from FFA Sciences, (CA, USA). All other chemicals (analytical grade) were supplied by Sigma-Aldrich Corp. (St. Louis, Mo) or Merck and Co. Inc (Whitehouse Station, NJ).

Lactadherin Purification

Lipid-free lactadherin was purified from fresh bovine milk essentially as described previously [39]. Purity was checked by SDS-PAGE showing the presence of only two bands at M_r 47 and 52 kDa corresponding to the two glycosylation variants, and by N-terminal amino acid sequencing demonstrating more than 97 percent purity. Lactadherin concentration was determined by measuring at $A_{280\text{ nm}}$ ($\epsilon = 77180\text{ M}^{-1}\text{ cm}^{-1}$, calculated) and stored at -80°C in 75 mM sodium phosphate, pH 7.0, 40 mM KCl.

Phospholipid Vesicles

Sonicated small unilamellar and extruded large unilamellar phospholipid vesicles (PLVs) of composition PS:PE:PC:bis-BODIPY PC 4:20:75:1 were prepared as previously described [41]. Phospholipid concentration was determined by elemental phosphorous assay [51]. Vesicles were flash frozen in liquid nitrogen, stored at -80°C , and thawed at 37°C within 2 hr of experiments.

Spectrofluoroscopic Assay of Secretory PLA₂ Activity on Vesicles

The ability of lactadherin to inhibit sPLA₂'s was determined using various concentrations of purified lactadherin against nmPLA₂ and hsPLA₂-V. Recombinant human phospholipase A₂ group V was chosen due to the apparent involvement of hsPLA₂-V in eicosanoid synthesis. Phospholipase activity was measured on a Peltier-thermostatted QMC-4-CW spectrofluorometer (PTI, NJ, USA) with λ_{exc} 488 nm and λ_{em} 515 nm. Slit widths were 0.5 mm for excitation and 1 mm for emission. Unless otherwise indicated, phospholipid vesicles concentrations were 10 μM , phospholipase concentration 0.06 U/ml, with enzyme kept on ice and experiments done in duplicates. Measuring buffer was HEPES (20 mM HEPES, 140 mM NaCl, 5 mM KCl, 1 mM Na₂HPO₄, 1.5 mM CaCl₂ and MgCl₂-pH 7.4) for vesicle experiments.

PLVs were allowed to equilibrate at 4°C in 150 μl measuring buffer for 5 min in the dark prior to addition of sPLA₂ and lactadherin in 150 μl , pre-cooled to 2°C . Vesicles were added via an injection port so that fluorescence monitoring was not interrupted. Fluorescence intensity dropped with injection, in proportion to dilution of the PLV. Fluorescence intensity was recorded in kinetic mode and analyzed for 6 min. at 4°C immediately following the dilution-related decrease in intensity. Fluorescence data were normalized to the value immediately following PLA₂ injection for display and analysis. When adding lactadherin, the maximum activity of the inhibited reaction is expressed against the uninhibited maximum activity.

Cell Culture

NB4 cells were maintained in RPMI 1640, 10% v/v fetal bovine serum, 1% v/v 5,000 U/ml 5,000 µg/ml penicillin and streptomycin (Life technologies, NY, USA) at 37°C, 5% CO₂, humidified atmosphere in a Symphony incubator (VWR, PA, USA). Optimal growth rate and cell health was ensured by sub-culturing 24 hours prior to experiments. All experiments were carried out between passage 17 and 25. Washes were done in no phenol red no serum RPMI1640 and centrifugation at 68 RCF with slow acceleration and deceleration to avoid premature stress. Cells were treated with calcium ionophore A23187 which in turn causes PS exposure on the cytofacial surface [52,53]. This procedure has previously been used successfully to mimic the PS exposure of apoptotic cells in phospholipase assays [20,54,55] and produce a stressed phenotype comparable to stimulated platelets [52]. A23187 was used at 6 µM concentration and added to the cell suspension 10 minutes prior to experiments. Optimal ionophore concentration and incubation time were titrated by prothrombinase assay and FITC-labeled lactadherin as described below. An alternate cell stress protocol was employed to discount interactions between A23187 and lactadherin. NB4 cells were stressed by incubation for 6 hours in RPMI 1640 containing 40 µM etoposide before being washed gently twice in 37°C no phenol red no serum RPMI 1640 as previously described. Five times the original volume of cell suspension was used (incubated cell suspension was 2 ml and wash carried out using 2×10 ml RPMI 1640) insuring that little etoposide remained. The 40 µM etoposide concentration was loosely based on Kaufmann et al. [56] and concentration and incubation time verified by PI/FITC-lactadherin flow cytometry as previously described.

Prothrombinase Assay of Cellular PS Exposure

PS exposure was measured using a two-step amidolytic substrate assay for prothrombinase activity where the exposed membrane PS is the limiting component of the prothrombinase complex [57]. The NB4 cells were gently washed, resuspended into reaction buffer (No serum no phenol red RPMI1640, 0.005% v/v BSA) and 100,000 cells added per well. A mixture of 0.5 nM Factor Xa and 0.5 nM Factor Va in reaction buffer was added to each well followed by substrate mix of 1 µM prothrombin and 1.5 mM Ca²⁺. The reaction was incubated for 5 min at room temperature and terminated by adding stop buffer (20 mM Tris/HCl - pH 7.0, 0.005% BSA and 16 mM EDTA) to each well. The chromogenic substrate S-2238 was added in each well to 115 µM and the speed of color generation was measured at 405 nm using a VersaMAX microplate reader (Molecular Devices, CA, USA) in kinetic mode, 3 second intervals. The reaction rate was found using Softmax Pro and an appropriate timeframe ($R^2 > 0.9$).

Flow Cytometry Assay of Cellular PS Exposure

PI is traditionally used as an apoptosis marker [58], however as the distinction between late stage apoptosis and necrosis can be difficult, the combination of lactadherin and PI was used to allow full control over the cell death pathway. Cell stress quantified by PS exposure was monitored over time using FITC labeled Lactadherin. Labeling was done as described previously [44,49] with FITC-lactadherin and PI used as apoptosis marker in a similar fashion as Vermes et al, Fadok et al a.o. [59–61]. 2×10^6 /ml NB4 cells were washed gently in RPMI 1640 without serum or phenol red and immediately treated using 6 µM A23187. Treated cells were monitored for 90 minutes on a Becton Dickinson LSRFortessa flow cytometer (BD biosciences, CA, USA) using 10 nM FITC-lactadherin and 2 µg/ml PI. Data processing was done using FACS Diva and FCS Express.

Spectrofluoroscopic Assay of Secretory PLA₂ Activity on NB4 Cells

The rate of free fatty acid release by NB4 cells was monitored by the fluorescence change of ADIFAB. Reactions were analyzed with 100,000 cells per/ml in a 3:1 mix of HEPES-buffered saline and RPMI1640 adjusted to 1.15 mM CaCl₂. The reaction volume was 300 µl in 3×3 mm micro square cell cuvette at 37°C. Fluorometer settings were λ_{ex} 380 nm and λ_{em} 440 nm with slit widths of 0.5 mm and 1.3 mm for excitation and emission, respectively. Activity was initiated by injecting 250 µl sPLA₂ in 50 µl cell solution over approx. 3 s. The final sPLA₂ concentration was 0.06 U/ml. Due to the very fast initial reaction rate of the stressed NB4 cells, the maximum activity was determined by obtaining the slope by linear regression and extrapolating back the last measured value prior to injection, usually 3–4 seconds.

Dataprocessing and Statistical Analysis

Standardized curves were fitted to a double exponential association model:

$$Y = Y_{\max dock} * (1 - e^{-K_{dock}*X}) + Y_{\max scoot} * (1 - e^{-K_{scoot}*X}) \quad (1)$$

Normalized curves (inhibition curves) were fitted to a double exponential association model:

$$Y = Y_{\max dock} * (1 - e^{-K_{dock}*X}) + Y_{\max scoot} * (1 - e^{-K_{scoot}*X}) + 1 \quad (2)$$

Initial rates versus substrate concentration was fitted to a Michaelis-Menten equation:

$$Y = \frac{V_{\max} * X}{K_m + X} \quad (3)$$

As the reaction was very rapid on live cell membranes the initial part of the curves were missing. The initial starting point of the reaction curves was found by linear extrapolation back to the original injection point. This was done to acquire the correct maximal RFU value (ΔY) using:

$$Y_{ext} = \frac{\Delta Y}{\Delta X} * (t_{extract} - t_{inject}) + 1 \quad (4)$$

All error bars display standard deviation and significance was calculated using Welch's t-test. Data processing was done in Microsoft Excel 2010 and Graphpad Prism 5.

Results

We wished to determine whether lactadherin has the capacity to inhibit activity of secretory PLA₂. Accordingly, we developed a real-time fluorescence assay and tested activity of a secretory PLA₂ from the venom of *Naja mozambiqua* (nmPLA₂) toward phospholipid vesicles containing 4% PS (Fig. 1). This membrane composition is similar to the outer leaflet of apoptotic cells that have undergone stimulation or stress [33,62]. Our results indicated that nmPLA₂ rapidly cleaves a fraction of the fluorescent bis-BODIPY PC. At 37°C and at 25°C the

fluorescence change approached completion within 5 s, making it difficult to record the details. Thus, the experimental data obtained for Figures 1–3 was obtained at 4°C, conditions under which substrate cleavage occurred over 6 minutes. Addition of lactadherin diminished the initial rate of substrate cleavage and the plateau. Thus, lactadherin has the capacity to inhibit activity of at least one secretory PLA₂.

The relationship between nmPLA₂ concentration and vesicle concentration was explored in order to determine optimal conditions for evaluating the inhibitory effect of lactadherin (Fig. 2). The data were normalized to initial fluorescence to emphasize the impact of varying phospholipid substrate with a fixed phospholipase concentration. Results indicated that the relative rate of substrate cleavage and the plateau are both influenced by the initial phospholipid concentration (Fig. 2A). Thus, initial phospholipase activity increased with substrate concentration then slowed primarily in response to factor(s) other than substrate depletion. This was explored by plotting the combined Y_{\max} obtained from a two-phase exponential association fit (Eq. 1) versus phospholipid concentration (Fig. 2B). To verify that the initial kinetic component was obeying Michaelis-Menten kinetics under our experimental conditions, initial reaction rates from 0 s to 5 s were measured and plotted against phospholipid concentration (Fig. 2C) and fitted to a Michaelis-Menten equation (Eq. 3), $R^2 = 0.96$. Similar curves were obtained with hsPLA₂-V (data not shown). Thus, under these conditions the number of sPLA₂ molecules/membrane phospholipid influences the total substrate cleavage as well as the initial rate. These results indicate the relationship between the parameters of the assay and the rate of substrate cleavage, enabling more quantitative testing of the inhibition by lactadherin. Further experiments were designed to primarily affect the initial, rapid component of phospholipase activity.

We tested the inhibitory activity of lactadherin toward human secretory PLA₂ (Fig. 3). The results indicated progressive inhibition at increasing concentrations of lactadherin with greater than 95% inhibition at 75 nM lactadherin on 4% PS SUV (Fig. 3A). A direct comparison of the inhibitory capacity of

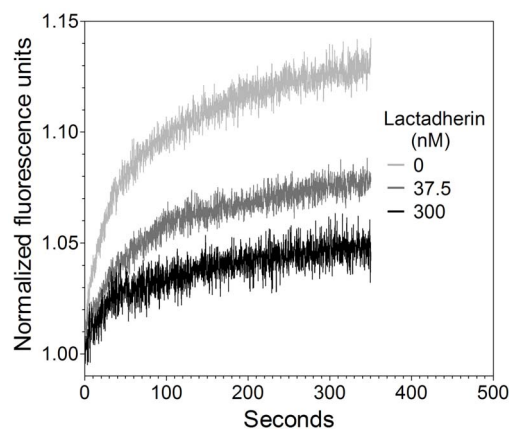


Figure 1. Cleavage of fluorescent phospholipid by nmPLA₂ and inhibition by lactadherin. Sonicated phospholipid vesicles, 10 μ M, of composition PS:PE:PC:bbPC 4:20:75:1 were pre-incubated for 15 minutes in PBS, pH 7.2 at 22°C with, or without, pure lipid-free bovine lactadherin before addition to a quartz cuvette of 3×3×45 mm. Vesicles were incubated for 5 minutes at 4°C in the Peltier-thermostatted sample chamber of the fluorometer before adding nmPLA₂ to a final concentration of 0.06 U/ml. Reaction curves are normalized to baseline fluorescence intensity before addition of phospholipase as per Eq. 2. doi:10.1371/journal.pone.0077143.g001

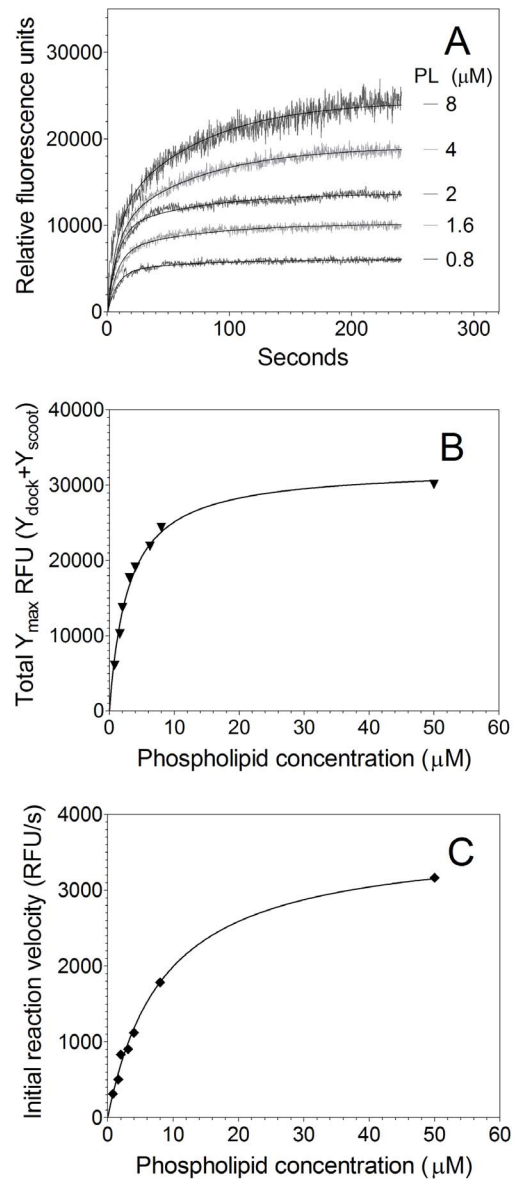


Figure 2. Relationship between PLA₂ concentration, phospholipid concentration, and phospholipase activity. (A) Varying concentrations of sonicated vesicles of composition PS:PE:PC:bbPC 4:20:75:1 were allowed to equilibrate at 4°C for 5 minutes before adding 0.125 U/ml nmPLA₂. The resulting curve replicates were standardized and fitted to a two-phase exponential association model (Eq. 1) and solved for global rate constants (fitted curves). (B) Total Y_{\max} obtained from fitted curves was plotted against phospholipid concentrations and fitted to a Michaelis-Menten equation. (C) The initial reaction rate was obtained from the original datasets using linear regression from 0–5 seconds and plotted against phospholipid concentration. A Michaelis-Menten equation was fitted to the data and of high fit quality. The results indicate a saturable dose-response relationship. Experiments at each phospholipid or phospholipase concentration were performed a minimum of two times, and values averaged. doi:10.1371/journal.pone.0077143.g002

lactadherin toward nmPLA₂ vs. hsPLA₂-V confirmed that 75 nM lactadherin inhibits approx. 50% nmPLA₂ activity while inhibiting greater than 95% hsPLA₂-V activity on 4% PS SUV (Fig. 3B). Because the binding of lactadherin and PLA₂'s are both sensitive to membrane curvature [41,63] we asked whether inhibition by lactadherin differed on extruded vesicles, with lesser membrane

convexity than sonicated vesicles (Fig. 3C). The relative fluorescence increase, in response to PLA₂, with extruded vesicles was approx. 3-fold greater than with sonicated vesicles, possibly related to a greater degree of self-quenching by the BODIPY acyl chains in the more tightly packed membrane cores of extruded vesicles. Lactadherin inhibition studies indicated that lower concentrations inhibit hsPLA₂-V on extruded vesicles with IC₅₀<4 nM vs. 18 nM on sonicated vesicles. The IC₅₀ for nmPLA₂ was also lower, by approx. 2-fold on extruded vesicles. These results indicate that lactadherin inhibits hsPLA₂-V more effectively than nmPLA₂ and that the inhibitory concentration of lactadherin is lower for vesicles with a lower degree of curvature.

We asked whether lactadherin might also inhibit PLA₂ activity on cell membranes (Fig. 4). For these experiments we utilized the human promyelocytic leukemia cell line, NB4. These cells were treated with 6 μM A23187 for 10 min at 22°C to stimulate pre-apoptotic PS exposure (Fig. 4A). Prothrombinase activity supported by the treated cells increased 3-fold compared to untreated cells, indicating substantial PS exposure. As judged by flow cytometry, these conditions resulted in 62% of cells meeting our criteria of substantial PS exposure without permeability to propidium iodide, while only 14% were apoptotic. To ensure that membrane structure, and consequent susceptibility to PLA₂ were not perturbed by the assay we utilized a different assay to detect phospholipase activity. In this assay, the fluorescence of fatty acid binding protein (ADIFAB) changes on binding to free fatty acids that diffuse from the membrane after cleavage by PLA₂. The assay was controlled by measuring the rate of free fatty acid release from cells that were quiescent, stressed, and stressed with 300 nM lactadherin in the absence of added PLA₂. The rate of free fatty acid release was low in the untreated cells and was not significantly increased by addition of nmPLA₂ or hsPLA₂-V (Fig. 4B and 4C - lower curves). Addition of nmPLA₂ or hsPLA₂ to A23187 treated cells increased the rate of free fatty acid release by 6 and 13 fold respectively (top curves), indicating that these enzymes have little activity on quiescent cells and much greater activity on the membranes of pre-apoptotic cells. The rate of phospholipid cleavage was faster with nmPLA₂ than with hsPLA₂-V, but hsPLA₂-V displayed a larger increase of the initial reaction rate on highly PS exposing cells compared to nmPLA₂. On stressed cells we observed a decrease in fluorescence after 20–40 seconds attributable to reacylation of free fatty acids as previously described (not shown) [64,65].

Addition of lactadherin reduced the rate of free fatty acid release (compare Fig. 4B and 4C top and middle curves). The initial rate of nmPLA₂ activity was reduced 45% by 300 nM lactadherin on pre-apoptotic NB4 cells (Fig. 4D). Phospholipase activity of hsPLA₂-V on these cells was reduced by >70% (Fig. 4E). To eliminate the interaction of lactadherin with A23187 as a cause of the observed inhibition, cells were stressed with 40 μM etoposide for 6 hours and run in a similar fashion. As seen in Figure 4F, 300 nM lactadherin inhibited hsPLA₂-V to much the same extent as observed using ionophore treated cells. Adverse effects like degradation or endocytosis was discounted by doing fast runs on a Flex station 3 microplate reader using master enzyme mixes (see figure S1 and S2). The inhibitory effect of lactadherin on nmPLA₂ and hsPLA₂-V on plasma membranes exhibited similar characteristics as those observed using small unilamellar and large unilamellar vesicles with hsPLA₂-V being more readily inhibited. This indicates the validity of using 4% PS vesicles as a reasonable pre-apoptotic plasma membrane model. Together these results indicate that secretory phospholipase A₂ activity is increased on pre-apoptotic cells and that lactadherin inhibits the activity of the more promiscuous nmPLA₂ as well as

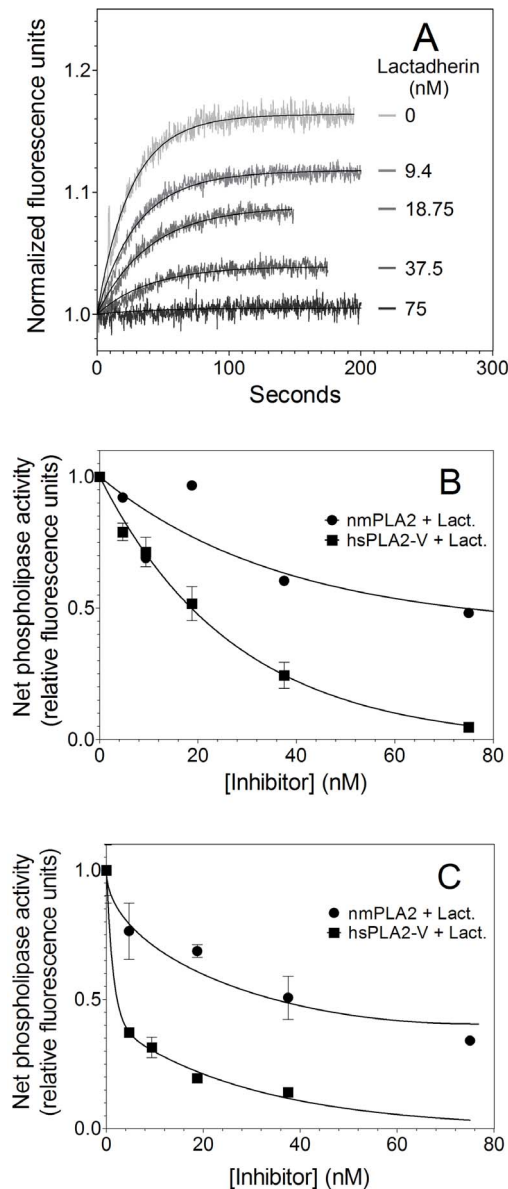


Figure 3. Lactadherin inhibition of hsPLA₂ vs. nmPLA₂. (A) Various concentrations of lactadherin were added to 10 μM phospholipid vesicles with composition as described for Fig. 2. Phospholipid vesicles were preincubated for 15 minutes with bovine lactadherin before transfer to a quartz cuvette and cooling for 5 minutes at 4°C. hsPLA₂-V was added to a final concentration of 0.06 U/ml and the activity monitored continuously as fluorescence emission at 515 nm. Data were fitted to a double exponential model and fitted globally as described in Fig. 2. Addition of lactadherin diminished both components of enzyme activity. (B) Normalized net phospholipase activity on sonicated PLVs after 400 s ± SD are plotted as a function of lactadherin concentration with uninhibited Y_{max total} as reference. (C) Experiments like those in panel 3A were performed utilizing extruded PLV rather than sonicated vesicles (not shown). Normalized phospholipase activity after 400 s ± SD are plotted as function of lactadherin concentration. As seen in all panels, the PS sensitive hsPLA₂-V is more readily blocked by lactadherin. All experiments were performed at least twice and results averaged for data displayed in panels B and C. doi:10.1371/journal.pone.0077143.g003

the more fastidious hsPLA₂-V on pre-apoptotic human leukemia cell membranes.

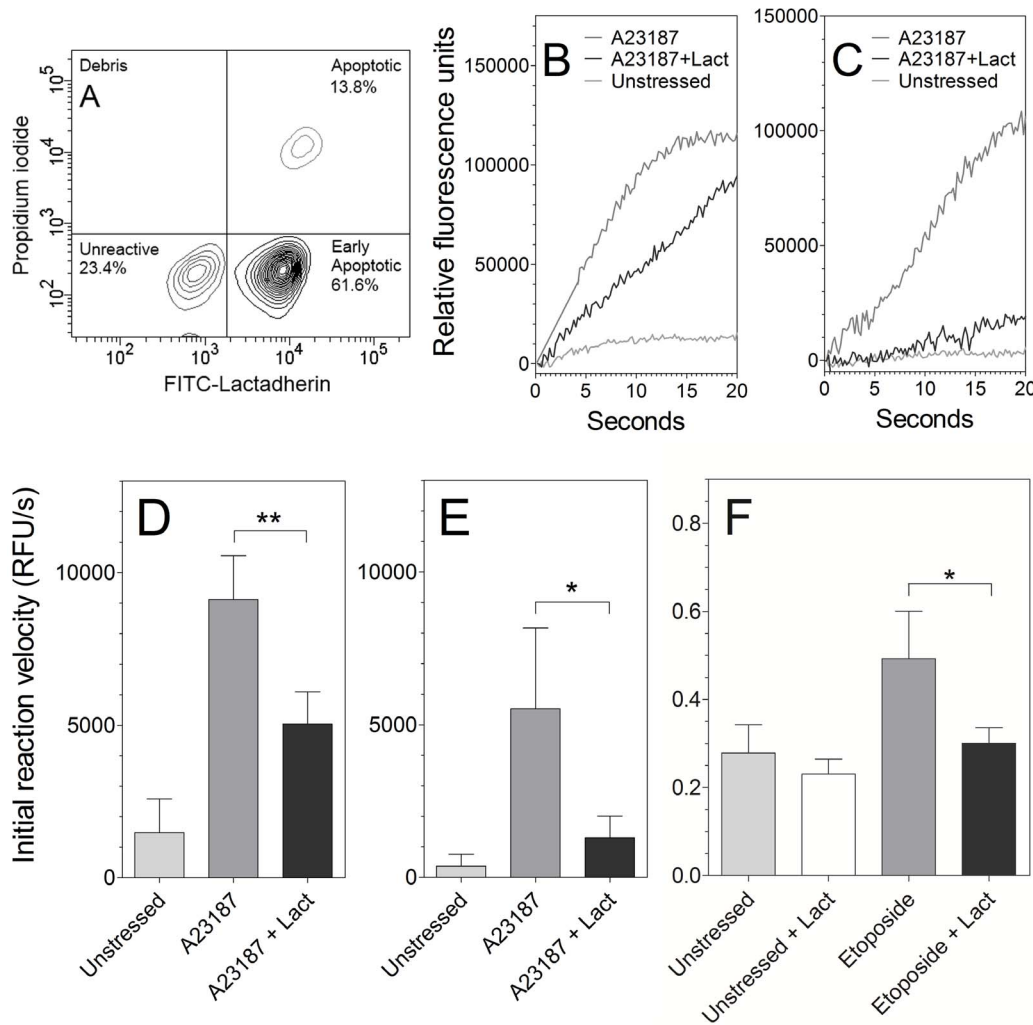


Figure 4. Inhibitory activity of lactadherin toward sPLA₂'s on human leukemia cells. (A) NB4 cells were treated with 6 μ M A23187 for 10 minutes at 22°C prior to addition of phospholipases. This treatment resulted in 61.6% pre-apoptotic cells. Phospholipase activity was detected as release of free fatty acids using the ADIFAB reagent. Each curve was run as a set in quadruplicate using a single mixture of ADIFAB and PLA₂. Curves were run in separate sets. The initial reaction rates for nmPLA₂ and hsPLA₂-V were calculated by linear regression to the first 5 and 15 seconds respectively, were $r^2 = 0.85\text{--}0.95$. (B) 0.06 U/ml nmPLA₂ phospholipase activity on quiescent, stressed cells and stressed with 300 nM lactadherin were measured. Lactadherin was added to the cell mix immediately before adding the ionophore, proceeding with 10 minute incubation. Control curves from similar treated cells without added enzyme were subtracted as background and extrapolated Y values at injection point found using Eq. 3. Sum curves of quadruplicate sets are displayed (C) The experiment was repeated as in panel B using 0.06 U/ml hsPLA₂-V. The initial reaction rate was calculated the same way as panel B. See panel 4D and 4E for quadruplicate results of nmPLA₂ and hsPLA₂-V respectively, SD displayed with *denoting $p < 0.05$ and **denoting $p < 0.001$. To discount any adverse interactions between A23187 and lactadherin, cells were stressed using 40 μ M etoposide as described in materials and methods. As seen in Figure 4F, inhibition of hsPLA₂-V to near quiescent levels by addition of 300 nM lactadherin was observed, producing very similar inhibition ratios as found when using the quick, A23187 and lactadherin co-incubation protocol. Statistical significance using a one-tailed T-test assuming unequal variance showed a significance of $p < 0.03$. doi:10.1371/journal.pone.0077143.g004

Discussion

We have shown that lactadherin inhibits activity of secretory phospholipase A₂ on phospholipid vesicles and on cell membranes. The degree of inhibition on phospholipid vesicles is lower for the snake venom PLA₂ than for a human secretory PLA₂ associated with inflammation. Susceptibility to PLA₂ inhibition by lactadherin is also influenced by membrane composition and curvature. These properties correlate to inhibition of phospholipase activity on a human leukemia cell line following cell treatment with A23187. Thus, lactadherin can inhibit secretory phospholipases A₂ on the membranes of pre-apoptotic cells.

Our studies are in general agreement with studies indicating that some phospholipase A₂'s can be partially inhibited by annexin A5 [66]. While the methodologies and the degree of phospholipid digestion differed substantially between the prior reports and our current report, our results are in qualitative agreement with the finding that PS-binding membrane proteins can inhibit the binding of phospholipases A₂. It is noteworthy that the PS binding of lactadherin is calcium independent, and phosphatidyl-L-serine specific, in contrast to Annexin A5. These properties, and the incomplete overlap between binding sites for lactadherin and annexin V, likely contribute to the efficacy of lactadherin.

Our studies are in agreement with prior observations that quiescent cell membranes support little or no activity of secretory

phospholipases A₂ [17,34,55]. Prior studies indicated these enzymes are active on the membranes of apoptotic cells [64,67]. Part of the explanation is likely that PS is sequestered on the inner leaflet of the resting cell membranes [29,68]. Cellular stress induces phospholipid scrambling, which in turn exposes phosphatidylserine at the exofacial surface [34,69]. Experiments show that PS exposing cells are target for inflammation-related secretory phospholipases like group IIA [4,20] and V [20]. Exofacial PS exposure recruits immune cells from increased eicosanoid production via secretory phospholipase A₂'s digestion of the plasma membrane and aids macrophage phagocytosis directly [32,70,71].

Secretory PLA₂'s achieve efficacy via a 2-step mechanism [72]. First they bind to suitable sites on a membrane and subsequently cleave the sn-2 bonds of successive phospholipid molecules without dissociation from the membrane and re-binding [4,73]. Formation of membrane binding sites for secretory PLA₂ IIA and V is increased by the content of negatively charged phospholipid molecules and increased by convex curvature [65]. Binding sites for lactadherin are proportional to membrane phosphatidylserine, the major negatively charged membrane phospholipid, and increased by convex membrane curvature [41], *i.e.* formation of membrane binding sites for lactadherin is sensitive to parameters that overlap with PLA₂'s. These similarities lead us to hypothesize that lactadherin primarily inhibits the initial binding step of secretory PLA₂'s. As such, the results suggest that the membrane binding sites for nmPLA₂, hsPLA₂-V, and lactadherin overlap but are not identical.

The findings in this study identify a new potential anti-inflammatory mechanism for lactadherin. The primary, established anti-inflammatory mechanism relates to its mechanism as an opsonin for apoptotic cells. Engulfment by lactadherin-coated cells promotes an anti-inflammatory response by phagocytes [74,75]. A second potential anti-inflammatory mechanism is the capacity to inhibit blood coagulation complexes on the membranes of cells that are stimulated, stressed, or apoptotic [45]. This study demonstrates that lactadherin may also modulate inflammation through decreasing the activity of secretory phospholipase A₂'s. It appears possible that lactadherin may inhibit sPLA₂'s on the same cells in which it is mediating anti-inflammatory phagocytosis during stress or apoptosis. Alternatively, secreted lactadherin may bind to cells that are remote from phagocytes and inhibit phospholipase activity independently from phagocytosis. In the present study we utilized small and large unilamellar vesicles and stressed NB4 cells to quantify the effect of lactadherin on nmPLA₂ and hsPLA₂-V activity. PI and FITC-lactadherin was used to monitor how many cells were in the different phases of apoptosis. PI staining (membrane permeability) in conjunction with PS exposure (stress and early apoptosis indicator) allows differentiation between stress/early apoptosis, late stage apoptosis/necrosis, cell debris and quiescent cells when combined with forward and side scatter information [76–78]. Stressed/early apoptotic cells stain for PS exposure, but not with PI and late stage apoptotic cells stain for PS and PI. As seen in figure 4, the primary part (~62%) of the cell population is pre-apoptotic (PS positive, PI negative). The distinction between late stage apoptosis and necrosis can be difficult and the measured ~14% PI/FITC-lactadherin positive cells likely indicates the death rate of NB4 cells subcultured 24 h before their use. However inhibiting phospholipases on necrotic cells enforces our conclusion, that lactadherin could function as an anti-inflammatory agent. In the presented experiments we observed efficient inhibition at 300 nM (14.1 μg/mL) lactadherin. This concentration is higher than that usually found in serum with 3–17 ng/ml for healthy adults [79,80].

Several pathologic conditions have shown increased serum concentrations 3–40 ng/ml for childhood-onset systemic lupus patients and 13–33 ng/ml for type 2 diabetes mellitus [79,80]. Local concentrations in the microenvironment surrounding lactadherin secreting phagocytes would however be expected to be substantially higher. Furthermore, the strong preference of sPLA₂ group IIA to PS might be exploited to preferentially inhibit group IIA in rheumatoid arthritis [10]. Further studies, utilizing lactadherin fragments that mediate anti-sPLA₂ activity independent from pro-phagocytic activity will be required to distinguish the importance of the anti-PLA₂ activity in inflammation. These studies may indicate whether lactadherin, or a molecule with similar membrane binding properties, may have pharmaceutical value as an anti-sPLA₂ anti-inflammatory agent.

In summary, we show that lactadherin inhibits venom (group –IA) and inflammatory (group –V) secretory phospholipase on both artificial 4% PS membranes and plasma membranes of pre-apoptotic cells. Further studies will be required to probe the inhibitory mechanism. Further studies will also be required to determine whether sPLA₂ inhibition is a physiologic mechanism of lactadherin function or whether lactadherin, or a lactadherin-like molecule, might be adaptable for therapeutic inhibition of sPLA₂'s.

Supporting Information

Figure S1 Results of nmPLA₂ on NB4 cells as monitored by ADIFAB. Initial experiments and optimization was done using a temperature controlled FlexStation 3 plate reader (Molecular Devices, Sunnyvale, CA). Cells were washed by gentle centrifugation at 68 RCF with slow acceleration and deceleration to avoid cell stress, followed by resuspension in 37°C no phenol red no serum RPMI 1640. 6 μM A23187 was added to the cell suspension in all samples and 300 nM lactadherin was added with A23187 in inhibition studies. 100,000 cells was dispensed per well and allowed to incubate for 10 minutes before addition of freshly made nmPLA₂ master mix to a total concentration of 0.06 U/ml. For each 96-well plate, a column of controls were run to reference the cellular stress levels of the cells in the vial used for each run. This was done to exclude effects by different handling. Using a plate reader allowed the exclusion of any time related effects like degradation of the enzyme, ionophore, ADIFAB or similar and the total run time was 3 minutes for master mix preparation and 30 seconds until the reaction rate plateau was reached equalling less than 5 minutes total. As seen in figure S1, unstressed NB4 cells exhibited little enzymatic activity as compare to the A23187 stressed cells. Inhibiting nmPLA₂ with lactadherin displayed similar results as observed in the spectrofluorometer with a reduction of the initial reaction rate to roughly half. In all plate reader experiments, quadruplicates were recorded and SD displayed, but the late onset of the first read (14 second delay) and the 2 second data point interval provided less than ideal data for intricate analysis, due to the partial lack of the initial reaction rate slope. A change to a high resolution spectrofluorometer system was done subsequently. (TIFF)

Figure S2 Results of hsPLA₂-V on NB4 cells as monitored by ADIFAB. Experiments using hsPLA₂-V were carried out in an identical manner as the nmPLA₂ experiments. Although the same 0.06 U/ml enzyme concentration was used, hsPLA₂-V displayed less activity on stressed membranes as compared to nmPLA₂. This behavior was later confirmed in higher resolution datasets (Fig. 4D and 4E). As seen in Figure S2, hsPLA₂-V activity were almost completely abolished on stressed cells, however SD

was larger than desired. Analyzing the data using a one-tailed T-test assuming unequal variance showed a significance of $p < 0.026$. (TIFF)

Acknowledgments

The authors wish to thank Shuchuan Liu for contributions in assay development during the early stages of this work.

References

- Kuipers OP, van den Bergh CJ, Verheij HM, de Haas GH (1990) Probing the mechanism of pancreatic phospholipase A₂ with the aid of recombinant DNA techniques. *Adv Exp Med Biol* 279: 65–84.
- Scott D, White S, Otwonowski Z, Yuan W, Gelb M, et al. (1990) Interfacial catalysis: the mechanism of phospholipase A₂. *Science* 250: 1541–1546. doi:10.1126/science.2274785.
- Jain MK, Berg OG (2006) Coupling of the i-face and the active site of phospholipase A₂ for interfacial activation. *Current Opinion in Chemical Biology* 10: 473–479. doi:10.1016/j.cbpa.2006.08.015.
- Jain MK, Rogers J, Jahagirdar DV, Marecek JF, Ramirez F (1986) Kinetics of interfacial catalysis by phospholipase A₂ in intravesicle scooting mode, and heterofusion of anionic and zwitterionic vesicles. *Biochimica et Biophysica Acta (BBA) - Biomembranes* 860: 435–447. doi:10.1016/0005-2736(86)90541-9.
- Hara S, Kudo I, Chang HW, Matsuta K, Miyamoto T, et al. (1989) Purification and characterization of extracellular phospholipase A₂ from human synovial fluid in rheumatoid arthritis. *J Biochem* 105: 395–399.
- Green JA, Smith GM, Buchta R, Lee R, Ho KY, et al. (1991) Circulating phospholipase A₂ activity associated with sepsis and septic shock is indistinguishable from that associated with rheumatoid arthritis. *Inflammation* 15: 355–367.
- Minami T, Tojo H, Shinomura Y, Matsuzawa Y, Okamoto M (1994) Increased group II phospholipase A₂ in colonic mucosa of patients with Crohn's disease and ulcerative colitis. *Gut* 35: 1593–1598.
- Haapamäki MM, Grönroos JM, Nurmi H, Alanen K, Nevalainen TJ (1999) Gene expression of group II phospholipase A₂ in intestine in Crohn's disease. *Am J Gastroenterol* 94: 713–720. doi:10.1111/j.1572-0241.1999.00941.x.
- Aarsman AJ, Neys FW, van der Helm HA, Kuypers FA, van den Bosch H (2000) Sera of patients suffering from inflammatory diseases contain group IIA but not group V phospholipase A₂. *Biochimica et Biophysica Acta (BBA) - Molecular Basis of Disease* 1502: 257–263. doi:10.1016/S0925-4439(00)00050-8.
- Boillard E, Lai Y, Larabee K, Balestrieri B, Ghomashchi F, et al. (2010) A novel anti-inflammatory role for secretory phospholipase A₂ in immune complex-mediated arthritis. *EMBO Molecular Medicine* 2: 172–187. doi:10.1002/emmm.201000072.
- Snitko Y, Koduri RS, Han SK, Othman R, Baker SF, et al. (1997) Mapping the interfacial binding surface of human secretory group IIA phospholipase A₂. *Biochemistry* 36: 14325–14333. doi:10.1021/bi971200z.
- Bayburt T, Yu BZ, Lin HK, Browning J, Jain MK, et al. (1993) Human nonpancreatic secreted phospholipase A₂: interfacial parameters, substrate specificities, and competitive inhibitors. *Biochemistry* 32: 573–582. doi:10.1021/bi00053a024.
- Chen J, Engle SJ, Seilhamer JJ, Tischfield JA (1994) Cloning and recombinant expression of a novel human low molecular weight Ca²⁺-dependent phospholipase A₂. *J Biol Chem* 269: 2365–2368.
- Balboa MA, Balsinde J, Winstead MV, Tischfield JA, Dennis EA (1996) Novel group V phospholipase A₂ involved in arachidonic acid mobilization in murine P388D1 macrophages. *J Biol Chem* 271: 32381–32384.
- Han SK, Kim KP, Koduri R, Bittova L, Munoz NM, et al. (1999) Roles of Trp31 in high membrane binding and proinflammatory activity of human group V phospholipase A₂. *J Biol Chem* 274: 11881–11888.
- Cupillard L, Koumanov K, Mattéi MG, Lazdunski M, Lambeau G (1997) Cloning, chromosomal mapping, and expression of a novel human secretory phospholipase A₂. *J Biol Chem* 272: 15745–15752.
- Singer AG, Ghomashchi F, Le Calvez C, Bollinger J, Bezzine S, et al. (2002) Interfacial kinetic and binding properties of the complete set of human and mouse groups I, II, V, X, and XII secreted phospholipases A₂. *J Biol Chem* 277: 48535–48549. doi:10.1074/jbc.M205855200.
- Winget JM, Pan YH, Bahnon BJ (2006) The interfacial binding surface of phospholipase A₂s. *Biochimica et Biophysica Acta (BBA) - Molecular and Cell Biology of Lipids* 1761: 1260–1269. doi:10.1016/j.bbalip.2006.08.002.
- Muñoz NM, Kim YJ, Meliton AY, Kim KP, Han S-K, et al. (2003) Human group V phospholipase A₂ induces group IVA phospholipase A₂-independent cysteinyl leukotriene synthesis in human eosinophils. *J Biol Chem* 278: 38813–38820. doi:10.1074/jbc.M302476200.
- Olson ED, Nelson J, Griffith K, Nguyen T, Streeter M, et al. (2010) Kinetic evaluation of cell membrane hydrolysis during apoptosis by human isoforms of secretory phospholipase A₂. *J Biol Chem* 285: 10993–11002. doi:10.1074/jbc.M109.070797.
- Murakami M, Taketomi Y, Girard C, Yamamoto K, Lambeau G (2010) Emerging roles of secreted phospholipase A₂ enzymes: Lessons from transgenic and knockout mice. *Biochimie* 92: 561–582. doi:10.1016/j.biochi.2010.03.015.
- Murakami M, Lambeau G (2013) Emerging roles of secreted phospholipase A₂ enzymes: An update. *Biochimie* 95: 43–50. doi:10.1016/j.biochi.2012.09.007.
- Muñoz NM, Meliton AY, Arm JP, Bonventre JV, Cho W, et al. (2007) Deletion of Secretory Group V Phospholipase A₂ Attenuates Cell Migration and Airway Hyperresponsiveness in Immunosensitized Mice. *J Immunol* 179: 4800–4807.
- Balestrieri B, Hsu VW, Gilbert H, Leslie CC, Han WK, et al. (2006) Group V Secretory Phospholipase A₂ Translocates to the Phagosome after Zymosan Stimulation of Mouse Peritoneal Macrophages and Regulates Phagocytosis*. *J Biol Chem* 281: 6691–6698. doi:10.1074/jbc.M508314200.
- Masuda S, Murakami M, Ishikawa Y, Ishii T, Kudo I (2005) Diverse cellular localizations of secretory phospholipase A₂ enzymes in several human tissues. *Biochim Biophys Acta* 1736: 200–210. doi:10.1016/j.bbali.2005.08.014.
- Masuda S, Murakami M, Komiyama K, Ishihara M, Ishikawa Y, et al. (2005) Various secretory phospholipase A₂ enzymes are expressed in rheumatoid arthritis and augment prostaglandin production in cultured synovial cells. *FEBS Journal* 272: 655–672. doi:10.1111/j.1742-4658.2004.04489.x.
- Masuda S, Murakami M, Mitsuishi M, Komiyama K, Ishikawa Y, et al. (2005) Expression of secretory phospholipase A₂ enzymes in lungs of humans with pneumonia and their potential prostaglandin-synthetic function in human lung-derived cells. *Biochem J* 387: 27–38. doi:10.1042/BJ20041307.
- Bretscher MS (1972) Asymmetrical lipid bilayer structure for biological membranes. *Nature New Biol* 236: 11–12.
- Seigneuret M, Devaux PF (1984) ATP-dependent asymmetric distribution of spin-labeled phospholipids in the erythrocyte membrane: relation to shape changes. *Proc Natl Acad Sci USA* 81: 3751–3755.
- Tannert A, Wüstner D, Bechstein J, Müller P, Devaux PF, et al. (2003) Aminophospholipids have no access to the luminal side of the biliary canaliculus: implications for the specific lipid composition of the bile fluid. *J Biol Chem* 278: 40631–40639. doi:10.1074/jbc.M302131200.
- Yabas M, Teh CE, Frankenreiter S, Lal D, Roots CM, et al. (2011) ATP11C is critical for the internalization of phosphatidylserine and differentiation of B lymphocytes. *Nature Immunology* 12: 441–449. doi:10.1038/ni.2011.
- Fadok VA, Voelker DR, Campbell PA, Cohen JJ, Bratton DL, et al. (1992) Exposure of Phosphatidylserine on the Surface of Apoptotic Lymphocytes Triggers Specific Recognition and Removal by Macrophages. *J Immunol* 148: 2207–2216.
- Martin SJ, Rutelingsperger CP, McGahon AJ, Rader JA, Schie RC, et al. (1995) Early redistribution of plasma membrane phosphatidylserine is a general feature of apoptosis regardless of the initiating stimulus: inhibition by overexpression of Bcl-2 and Abl. *J Exp Med* 182: 1545–1556. doi:10.1084/jem.182.5.1545.
- Zwaal RF, Roelofs B, Comfurius P, van Deenen LL (1975) Organization of phospholipids in human red cell membranes as detected by the action of various purified phospholipases. *Biochim Biophys Acta* 406: 83–96.
- Dennis EA (2000) Phospholipase A₂ in eicosanoid generation. *Am J Respir Crit Care Med* 161: S32–35.
- Nevalainen TJ, Haapamäki MM, Grönroos JM (2000) Roles of secretory phospholipases A₂(2) in inflammatory diseases and trauma. *Biochim Biophys Acta* 1488: 83–90.
- Satake Y, Diaz BL, Balestrieri B, Lam BK, Kanaoka Y, et al. (2004) Role of group V phospholipase A₂ in zymosan-induced eicosanoid generation and vascular permeability revealed by targeted gene disruption. *J Biol Chem* 279: 16488–16494. doi:10.1074/jbc.M313748200.
- Funk CD (2001) Prostaglandins and leukotrienes: advances in eicosanoid biology. *Science* 294: 1871–1875. doi:10.1126/science.294.5548.1871.
- Hvarregaard J, Andersen MH, Berglund L, Rasmussen JT, Petersen TE (1996) Characterization of glycoprotein PAS-6/7 from membranes of bovine milk fat globules. *Eur J Biochem* 240: 628–636.
- Andersen MH, Gravarsen H, Fedosov SN, Petersen TE, Rasmussen JT (2000) Functional analyses of two cellular binding domains of bovine lactadherin. *Biochemistry* 39: 6200–6206.
- Shi J, Heegaard CW, Rasmussen JT, Gilbert GE (2004) Lactadherin binds selectively to membranes containing phosphatidyl-L-serine and increased curvature. *Biochimica et Biophysica Acta (BBA) - Biomembranes* 1667: 82–90. doi:10.1016/j.bbamem.2004.09.006.
- Otzen DE, Blans K, Wang H, Gilbert GE, Rasmussen JT (2012) Lactadherin binds to phosphatidylserine-containing vesicles in a two-step mechanism sensitive to vesicle size and composition. *Biochim Biophys Acta* 1818: 1019–1027. doi:10.1016/j.bbamem.2011.08.032.

Author Contributions

Conceived and designed the experiments: GEG SN. Performed the experiments: SN VN. Analyzed the data: SN. Contributed reagents/materials/analysis tools: GEG JTR SN. Wrote the paper: SN GEG JTR.

43. Andersen MH, Berglund L, Rasmussen JT, Petersen TE (1997) Bovine PAS-6/7 binds alpha v beta 5 integrins and anionic phospholipids through two domains. *Biochemistry* 36: 5441–5446. doi:10.1021/bi963119m.
44. Wachrens LN, Heegaard CW, Gilbert GE, Rasmussen JT (2009) Bovine lactadherin as a calcium-independent imaging agent of phosphatidylserine expressed on the surface of apoptotic HeLa cells. *J Histochem Cytochem* 57: 907–914. doi:10.1369/jhc.2009.953729.
45. Shi J, Gilbert GE (2003) Lactadherin inhibits enzyme complexes of blood coagulation by competing for phospholipid-binding sites. *Blood* 101: 2628–2636. doi:10.1182/blood-2002-07-1951.
46. Shi J, Pipe SW, Rasmussen JT, Heegaard CW, Gilbert GE (2008) Lactadherin blocks thrombosis and hemostasis in vivo: correlation with platelet phosphatidylserine exposure. *J Thromb Haemost* 6: 1167–1174. doi:10.1111/j.1538-7836.2008.03010.x.
47. Wu Y, Tibrewal N, Birge RB (2006) Phosphatidylserine recognition by phagocytes: a view to a kill. *Trends Cell Biol* 16: 189–197. doi:10.1016/j.tcb.2006.02.003.
48. Hanayama R, Tanaka M, Miwa K, Shinohara A, Iwamatsu A, et al. (2002) Identification of a factor that links apoptotic cells to phagocytes. *Nature* 417: 182–187. doi:10.1038/417182a.
49. Shi J, Shi Y, Wachrens LN, Rasmussen JT, Heegaard CW, et al. (2006) Lactadherin detects early phosphatidylserine exposure on immortalized leukemia cells undergoing programmed cell death. *Cytometry A* 69: 1193–1201. doi:10.1002/cyto.a.20345.
50. Lanotte M, Martin-Thouvenin V, Najman S, Balerini P, Valensi F, et al. (1991) NB4, a maturation inducible cell line with t(15;17) marker isolated from a human acute promyelocytic leukemia (M3). *Blood* 77: 1080–1086.
51. Chen PS (1956) Microdetermination of Phosphorus. *Analytical chemistry* (Washington) 28: 1756–1758. doi:10.1021/ac60119a033.
52. Wolfs JLN, Comfurius P, Rasmussen JT, Keuren JFW, Lindhout T, et al. (2005) Activated scramblase and inhibited aminophospholipid translocase cause phosphatidylserine exposure in a distinct platelet fraction. *CMLS, Cell Mol Life Sci* 62: 1514–1525. doi:10.1007/s00018-005-5099-y.
53. Clark SR, Thomas CP, Hammond VJ, Aldrovandi M, Wilkinson GW, et al. (2013) Characterization of platelet aminophospholipid externalization reveals fatty acids as molecular determinants that regulate coagulation. *Proc Natl Acad Sci U S A* 110: 5875–5880. doi:10.1073/pnas.1222419110.
54. Boccellino M, Giovane A, Servillo L, Balestrieri C, Quagliuolo L (2002) Fatty acid mobilized by the vascular endothelial growth factor in human endothelial cells. *Lipids* 37: 1047–1052.
55. Nelson J, Francom LL, Anderson L, Damm K, Baker R, et al. (2012) Investigation into the Role of Phosphatidylserine in Modifying the Susceptibility of Human Lymphocytes to Secretory Phospholipase A2 using Cells Deficient in the Expression of Scramblase. *Biochim Biophys Acta* 1818: 1196–1204. doi:10.1016/j.bbame.2012.01.005.
56. Kaufmann SH (1989) Induction of Endonucleolytic DNA Cleavage in Human Acute Myelogenous Leukemia Cells by Etoposide, Camptothecin, and Other Cytotoxic Anticancer Drugs: A Cautionary Note. *Cancer Research* 49: 5870–5878.
57. Axelsson G, Korsan-Bengtson K, Waldenström J (1976) Prothrombin determination by means of a chromogenic peptide substrate. *Thromb Haemost* 36: 517–524.
58. Riccardi C, Nicoletti I (2006) Analysis of apoptosis by propidium iodide staining and flow cytometry. *Nat Protoc* 1: 1458–1461. doi:10.1038/nprot.2006.238.
59. Nelson J, Gibbons E, Pickett KR, Streeter M, Warcup AO, et al. (2011) Relationship between membrane permeability and specificity of human secretory phospholipase A2 isoforms during cell death. *Biochimica et Biophysica Acta (BBA) - Biomembranes* 1808: 1913–1920. doi:10.1016/j.bbame.2011.04.003.
60. Vermes I, Haanen C, Steffens-Nakken H, Reutelingsperger C (1995) A novel assay for apoptosis. Flow cytometric detection of phosphatidylserine expression on early apoptotic cells using fluorescein labelled Annexin V. *J Immunol Methods* 184: 39–51.
61. Fadok VA, de Cathelineau A, Daleke DL, Henson PM, Bratton DL (2001) Loss of phospholipid asymmetry and surface exposure of phosphatidylserine is required for phagocytosis of apoptotic cells by macrophages and fibroblasts. *J Biol Chem* 276: 1071–1077. doi:10.1074/jbc.M003649200.
62. Schroit AJ, Madsen JW, Tanaka Y (1985) In vivo recognition and clearance of red blood cells containing phosphatidylserine in their plasma membranes. *J Biol Chem* 260: 5131–5138.
63. Burke JR, Witmer MR, Tredup JA (1999) The size and curvature of anionic cosubstrate affects the catalytic action of cytosolic phospholipase A2. *Arch Biochem Biophys* 365: 239–247. doi:10.1006/abbi.1999.1151.
64. Wilson HA, Waldrip JB, Nielson KH, Judd AM, Han SK, et al. (1999) Mechanisms by which elevated intracellular calcium induces S49 cell membranes to become susceptible to the action of secretory phospholipase A2. *J Biol Chem* 274: 11494–11504.
65. Bailey RW, Olson ED, Vu MP, Bruescke TJ, Robertson L, et al. (2007) Relationship between Membrane Physical Properties and Secretory Phospholipase A2 Hydrolysis Kinetics in S49 Cells during Ionophore-Induced Apoptosis. *Biophys J* 93: 2350–2362. doi:10.1529/biophysj.107.104679.
66. Tait JF, Sakata M, McMullen BA, Miao CH, Funakoshi T, et al. (1988) Placental anticoagulant proteins: isolation and comparative characterization four members of the lipocortin family. *Biochemistry* 27: 6268–6276.
67. Nielson KH, Olsen CA, Allred DV, O'Neill KL, Burton GF, et al. (2000) Susceptibility of S49 lymphoma cell membranes to hydrolysis by secretory phospholipase A2 during early phase of apoptosis. *Biochimica et Biophysica Acta (BBA) - Molecular and Cell Biology of Lipids* 1484: 163–174. doi:10.1016/S1388-1981(00)00004-4.
68. Bevers EM, Comfurius P, Zwaal RF (1983) Changes in membrane phospholipid distribution during platelet activation. *Biochim Biophys Acta* 736: 57–66.
69. Frasch SC, Henson PM, Kailey JM, Richter DA, Janes MS, et al. (2000) Regulation of Phospholipid Scramblase Activity During Apoptosis and Cell Activation by Protein Kinase C δ . *J Biol Chem* 275: 23065–23073. doi:10.1074/jbc.M003116200.
70. Fadok VA, Bratton DL, Rose DM, Pearson A, Ezekewitz RAB, et al. (2000) A receptor for phosphatidylserine-specific clearance of apoptotic cells. *Nature* 405: 85–90. doi:10.1038/35011084.
71. Lapointe S, Brkovic A, Cloutier I, Tanguay J-F, Arm JP, et al. (2010) Group V secreted phospholipase A2 contributes to LPS-induced leukocyte recruitment. *J Cell Physiol* 224: 127–134. doi:10.1002/jcp.22106.
72. Verger R (1976) Interfacial enzyme kinetics of lipolysis. *Annu Rev Biophys Bioeng* 5: 77–117. doi:10.1146/annurev.bb.05.060176.000453.
73. Berg OG, Yu BZ, Rogers J, Jain MK (1991) Interfacial catalysis by phospholipase A2: determination of the interfacial kinetic rate constants. *Biochemistry* 30: 7283–7297. doi:10.1021/bi00243a034.
74. Jinushi M, Nakazaki Y, Dougan M, Carrasco DR, Mihm M, et al. (2007) MFG-E8-mediated uptake of apoptotic cells by APCs links the pro- and antiinflammatory activities of GM-CSF. *J Clin Invest* 117: 1902–1913. doi:10.1172/JCI30966.
75. Cui T, Miksa M, Wu R, Komura H, Zhou M, et al. (2010) Milk fat globule epidermal growth factor 8 attenuates acute lung injury in mice after intestinal ischemia and reperfusion. *Am J Respir Crit Care Med* 181: 238–246. doi:10.1164/rccm.200804-625OC.
76. Schlegel RA, Williamson P (2001) Phosphatidylserine, a death knell. *Cell Death Differ* 8: 551–563. doi:10.1038/sj.cdd.4400817.
77. Bonfoco E, Krainc D, Ankarcrona M, Nicotera P, Lipton SA (1995) Apoptosis and necrosis: two distinct events induced, respectively, by mild and intense insults with N-methyl-D-aspartate or nitric oxide/superoxide in cortical cell cultures. *PNAS* 92: 7162–7166. doi:10.1006/excr.2002.5537.
78. Hervé L (2002) Nuclear Apoptosis Detection by Flow Cytometry: Influence of Endogenous Endonucleases. *Experimental Cell Research* 277: 1–14. doi:10.1006/excr.2002.5537.
79. Yamaguchi H, Takagi J, Miyamae T, Yokota S, Fujimoto T, et al. (2008) Milk fat globule EGF factor 8 in the serum of human patients of systemic lupus erythematosus. *J Leukoc Biol* 83: 1300–1307. doi:10.1189/jlb.1107730.
80. Cheng M, Li B, Li X, Wang Q, Zhang J, et al. (2012) Correlation between serum lactadherin and pulse wave velocity and cardiovascular risk factors in elderly patients with type 2 diabetes mellitus. *Diabetes Res Clin Pract* 95: 125–131. doi:10.1016/j.diabres.2011.09.030.