



DIGITAL ACCESS TO SCHOLARSHIP AT HARVARD

Cotrimoxazole Prophylaxis and Risk of Severe Anemia or Severe Neutropenia in HAART-Exposed, HIV-Uninfected Infants

The Harvard community has made this article openly available.
[Please share](#) how this access benefits you. Your story matters.

Citation	Dryden-Peterson, S., O. Jayeoba, M. D. Hughes, H. Jibril, K. McIntosh, T. A. Modise, A. Asmelash, et al. 2013. "Cotrimoxazole Prophylaxis and Risk of Severe Anemia or Severe Neutropenia in HAART-Exposed, HIV-Uninfected Infants." PLoS ONE 8 (9): e74171. doi:10.1371/journal.pone.0074171. http://dx.doi.org/10.1371/journal.pone.0074171 .
Published Version	doi:10.1371/journal.pone.0074171
Accessed	February 19, 2015 2:38:05 PM EST
Citable Link	http://nrs.harvard.edu/urn-3:HUL.InstRepos:11878841
Terms of Use	This article was downloaded from Harvard University's DASH repository, and is made available under the terms and conditions applicable to Other Posted Material, as set forth at http://nrs.harvard.edu/urn-3:HUL.InstRepos:dash.current.terms-of-use#LAA

(Article begins on next page)

Cotrimoxazole Prophylaxis and Risk of Severe Anemia or Severe Neutropenia in HAART-Exposed, HIV-Uninfected Infants

Scott Dryden-Peterson^{1,2,3*}, Oluwemimo Jayeoba², Michael D. Hughes⁴, Haruna Jibril⁵, Kenneth McIntosh^{3,6}, Taolo A. Modise², Aida Asmelash², Kathleen M. Powis^{2,3,7}, Max Essex^{2,3}, Roger L. Shapiro^{2,3,8}, Shahin Lockman^{1,2,3}

1 Division of Infectious Diseases, Brigham and Women's Hospital, Boston, Massachusetts, United States of America, **2** Botswana Harvard AIDS Institute Partnership, Gaborone, Botswana, **3** Department of Immunology and Infectious Diseases, Harvard School of Public Health, Boston, Massachusetts, United States of America, **4** Department of Biostatistics, Harvard School of Public Health, Boston, Massachusetts, United States of America, **5** Department of Public Health, Ministry of Health, Gaborone, Botswana, **6** Division of Infectious Diseases, Boston Children's Hospital, Boston, Massachusetts, United States of America, **7** Departments of Internal Medicine and Pediatrics, Massachusetts General Hospital, Boston, Massachusetts, United States of America, **8** Division of Infectious Diseases, Beth Israel Deaconess Medical Center, Boston, Massachusetts, United States of America

Abstract

Background: Prophylactic cotrimoxazole is recommended for infants born to HIV-infected mothers. However, cotrimoxazole may increase the risk of severe anemia or neutropenia.

Methods: We compared the proportion of HIV-exposed uninfected (HIV-EU) infants experiencing incident severe anemia (and separately, severe neutropenia) between a prospective cohort receiving prophylactic cotrimoxazole from 1 to 6 months vs. infants from two prior trials who did not receive cotrimoxazole. Infants were from rural and urban communities in southern Botswana.

Results: A total of 1705 HIV-EU infants were included. Among these 645 (37.8%) were fed with iron-supplemented formula from birth. Severe anemia developed in 87 (5.1%) infants, and severe neutropenia in 164 (9.6%) infants. In an analysis stratified by infant feeding method, there were no significant differences in the risk of severe anemia by prophylactic cotrimoxazole exposure—risk difference, -0.69% (95% confidence interval [CI] -2.1 to 0.76%). Findings were similar in multivariable analysis, adjusted odds ratio (aOR) 0.35 (95% CI 0.07 to 1.65). There were also no significant differences observed for severe neutropenia by cotrimoxazole exposure, risk difference 2.0% (95% CI -1.3 to 5.2%) and aOR 0.80 (95% CI 0.33 to 1.93).

Conclusions: Severe anemia and severe neutropenia were infrequent among HIV-exposed uninfected infants receiving cotrimoxazole from 1–6 months of age. Concerns regarding hematologic toxicity should not limit the use of prophylactic cotrimoxazole in HIV-exposed uninfected infants.

ClinicalTrials.gov Registration Numbers: NCT01086878 (<http://clinicaltrials.gov/show/NCT01086878>), NCT00197587 (<http://clinicaltrials.gov/show/NCT00197587>), and NCT00270296 (<http://clinicaltrials.gov/show/NCT00270296>).

Citation: Dryden-Peterson S, Jayeoba O, Hughes MD, Jibril H, McIntosh K, et al. (2013) Cotrimoxazole Prophylaxis and Risk of Severe Anemia or Severe Neutropenia in HAART-Exposed, HIV-Uninfected Infants. PLoS ONE 8(9): e74171. doi:10.1371/journal.pone.0074171

Editor: Sarah Pett, University of New South Wales, Australia

Received: March 15, 2013; **Accepted:** July 29, 2013; **Published:** September 23, 2013

Copyright: © 2013 Dryden-Peterson et al. This is an open-access article distributed under the terms of the Creative Commons Attribution License, which permits unrestricted use, distribution, and reproduction in any medium, provided the original author and source are credited.

Funding: Work supported by a research grant from the Harvard University Center for AIDS Research (CFAR), a National Institutes of Health (NIH)-funded program (P30 AI060354) which is supported by the following NIH Co-Funding and Participating Institutes and Centers: NIAID, NCI, NICHD, NHLBI, NIDA, NIMH, NIA, MCCAM, FIC, and OAR, and career development grants (to S.D.P.) from the Fogarty International Center (R24 TW007988), Burroughs Wellcome Fund/American Society of Tropical Medicine and Hygiene, and the Harvard Institute for Global Health. The funders had no role in study design, data collection and analysis, decision to publish, or preparation of the manuscript.

Competing Interests: Dr. Hughes was previously a paid member of the Data and Safety Monitoring Boards for Boehringer Ingelheim, Medicines Development, Pfizer and Tibotec. This does not alter the authors' adherence to all the PLOS ONE policies on sharing data and materials.

* E-mail: scott_peterson@post.harvard.edu

Introduction

The World Health Organization (WHO) recommends that all infants born to HIV-infected mothers receive prophylactic cotrimoxazole until they are known to be HIV-uninfected and they are no longer at risk of acquiring HIV via breastfeeding. [1] Due to challenges with timely infant HIV diagnosis, the period of

recommended cotrimoxazole use for the majority of the nearly two million HIV-exposed infants born in sub-Saharan Africa annually [2] exceeds 6 months for formula-fed infants and is greater than 12 months for a majority of breastfed infants. However, with maternal highly active antiretroviral therapy (HAART), less than 2% of infants acquire HIV infection. [3–5] With improved access

to maternal HAART during pregnancy and breastfeeding, [6] the recommendation to provide empiric cotrimoxazole prophylaxis for all HIV-exposed infants has been questioned. [7].

Maternal HAART has been associated with increased risk of infant anemia [8–11] [12] and neutropenia. [13,14] We previously found an association between exposure to maternal HAART and severe infant anemia [12]. Post-natal prophylactic infant zidovudine likely further increases this risk. [15] Cotrimoxazole also can adversely affect hematopoiesis, [16,17] although virtually no data are available for the effect in infants. [18] The combination of HAART and cotrimoxazole appears to increase risk of hematologic toxicity in sub-Saharan African adults. [19–21] Infants may be more vulnerable to this effect, as hemoglobin concentration falls following birth reaching a physiologic nadir between 1 and 2 months of life before recovering by 6 months. [22,23] Provision of prolonged cotrimoxazole prophylaxis to young infants may potentiate anemia and neutropenia in HAART-exposed infants.

An increased risk of severe hematologic complications could alter the balance of risks and benefits of the WHO strategy of cotrimoxazole for all HIV-exposed infants. Additionally, there is interest in using cotrimoxazole prophylaxis to reduce excess morbidity in HIV-exposed uninfected (HIV-EU) infants. We therefore sought to prospectively compare the proportion of infants with incident severe anemia and incident severe neutropenia from one to six months of age between HIV-exposed infants receiving cotrimoxazole prophylaxis in a new cohort (CTX) and infants not receiving cotrimoxazole prophylaxis in two prior similar cohorts (CTX-unexposed).

Methods

Ethics Statement

All participating mothers provided written informed consent for themselves and on behalf of their infants. The studies were reviewed and approved by the Botswana Health Research Development Committee and the Institutional Review Board of the Harvard School of Public Health. The trial clinicaltrials.gov registration numbers are NCT01086878, NCT00197587, and NCT00270296. The protocol for this trial and supporting CONSORT checklist are available as supporting information; see Checklist S1 and Protocol S1.

Study Design

We performed a prospective, historically-controlled clinical trial of prophylactic cotrimoxazole. We compared the frequency of hematologic toxicity between HIV-EU infants in a new prospective cohort (CTX) that received cotrimoxazole prophylaxis, and HIV-EU infants in two prior studies (Mashi and Mma Bana) that did not receive cotrimoxazole prophylaxis (CTX-unexposed). Infants were followed in the same communities and clinics, and resided in non-malarial regions of Botswana.

To emulate current practice where infant HIV diagnosis may be delayed until beyond 6 months, HIV-EU infants in the CTX cohort were assigned to receive cotrimoxazole (Purbac suspension, Aspen Pharmacare Limited, Johannesburg, South Africa) from 1 to 6 months of age, regardless of feeding method. Recommended weight-based dosing of cotrimoxazole was used (<5 kg, 100 mg sulfamethoxazole/20 mg trimethoprim once daily; \geq 5 kg, 200 mg sulfamethoxazole/40 mg trimethoprim once daily). [1,24] The frequencies of anemia and neutropenia in this cohort were compared with frequencies of these outcomes among HIV-EU infants in the CTX-unexposed cohort which did not provide cotrimoxazole prophylaxis to uninfected infants (Figure 1).

Study Subjects

For the CTX cohort, we approached HIV-infected mothers receiving antenatal HAART who delivered live-born infants between February 2009 and April 2010. According to national guidelines at the time of the study, [24] women with CD4 cell count \leq 250 cells/ μ L or WHO clinical stage 3 or 4 were eligible for HAART. Women were provided with feeding counseling, and were eligible for the study whether they opted to breastfeed or formula-feed. Infants born to consenting mothers were enrolled in the CTX cohort when they returned to the study clinic at one month of age. The Mashi and Mma Bana trials enrolled pregnant women and their infants. The HIV-uninfected infants from these trials were included in the CTX-unexposed cohort if they attended the scheduled clinic visit at one month of age.

All infants were recommended to receive single-dose nevirapine at birth and 4 weeks of zidovudine prophylaxis. Breastfeeding infants in the Mashi trial were assigned to receive extended zidovudine through 6 months. Breastfeeding mothers in all cohorts were counseled to wean at 6 months. Replacement-fed infants in all cohorts received iron-fortified formula free of charge through the Botswana national program and mother received prenatal iron supplementation. Immediate cord clamping was the standard obstetrical practice during all three studies. Interviews with midwives caring for subjects in all three cohorts indicate that there has not been a change in maternal or infant supplements. Details of maternal and infant interventions of the cohorts are summarized in Table S1.

Adherence to cotrimoxazole was assessed through self-report and pharmacy refill records. Infants were weighed at each visit to confirm appropriate dosage. All women were taught by a nurse at each visit about the appropriate dose to administer.

Laboratory Measurements

Infants had laboratory measurements at birth and at 1, 3, and 6 months (other than for Mashi formula-fed infants who were seen at birth and at 1, 4, and 7 months). Peripheral blood for a full blood count with differential was taken at each scheduled visit (no measurement at birth in CTX cohort). Full blood counts were performed using the Sysmex XE 2100 automated flow cytometry analyzer (Sysmex Corporation, Kobe, Japan). Infant HIV testing was performed at similar intervals by qualitative polymerase chain reaction (PCR) DNA assay using the Amplicor HIV-1 test (Roche Diagnostic Systems, New Jersey).

Endpoints and Exposures

The primary endpoint was the first episode of severe (grade 3 or 4) anemia (or first episode of grade 3 or 4 neutropenia in a separate analysis). Grading was according to the Division of AIDS (DAIDS) toxicity tables, 2004 revision, developed from normative ranges from the United States and Europe and expert opinion. [25] To reduce ascertainment bias, only severe anemia or neutropenia detected at scheduled 3 and 6 month visits (4 and 7 month visits in Mashi formula-fed group) were considered as endpoints. Infants born to mothers taking HAART starting at least one day prior to delivery were defined as HAART-exposed and infants that did not initiate breastfeeding prior to hospital discharge were considered as formula-fed. Infants that initiated breastfeeding, but subsequently stopped prior to 6 months of age were considered as breastfed for purposes of analysis.

Analytic Methods

The study was originally designed to detect a clinically significant increase (10 percent absolute increase) in the proportion

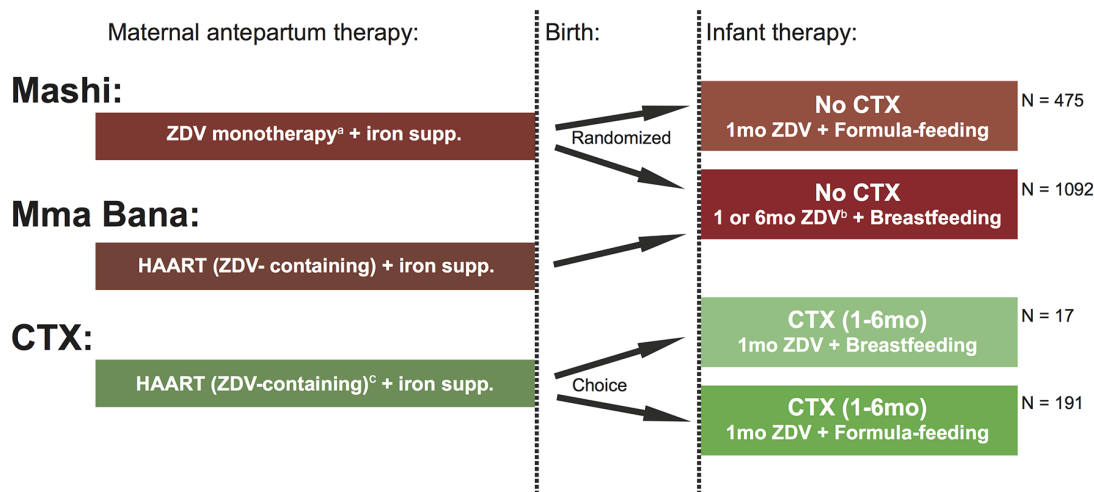


Figure 1. Schematic of infant exposures in study cohorts. ZDV, zidovudine; supp., supplementation; CTX, cotrimoxazole; HAART, highly-active antiretroviral therapy; mo., month. ^aHAART became available through a national program in October 2002, subsequently women in Mashī trial with $CD4 \leq 200$ cells/ μ L were offered HAART. ^bInfants in the Mma Bana trial received 1 month of ZDV and breastfed infants in the Mashī trial received 6 months of ZDV. ^cNineteen mothers (9.1%) in CTX cohort received non-ZDV-containing HAART. doi:10.1371/journal.pone.0074171.g001

of breastfed, HIV-exposed uninfected (HIV-EU) infants with severe anemia between infants receiving versus not receiving cotrimoxazole. However, with increasing governmental support for replacement feeding of HIV-EU infants in Botswana, we were unable to enroll sufficient numbers of HIV-EU breastfed infants for this comparison. Consequently, we opened enrollment in the CTX cohort to both breastfed and formula-fed HIV-EU infants. Among formula-fed infants, the modified design had greater than 90 percent power to detect an absolute 5 percent increase (above the observed 1 percent in the Mashī trial) in the proportion with severe anemia.

Analyses were restricted to HIV-uninfected infants. Stratifying by infant feeding method, we used an exact Cochran-Mantel-Haenszel test to examine for significant differences in cumulative incident cases of severe anemia and severe neutropenia by cotrimoxazole group. The Breslow-Day test was used to guide decision of pooling stratified odds ratios. Multiple logistic regression was used subsequently to adjust for baseline differences between the cotrimoxazole exposure groups. Cotrimoxazole assignment, antenatal maternal HAART, and infant feeding method were retained in the model. Backwards stepwise model selection, retaining all factors significantly associated ($P < 0.05$) with the outcome, was used to determine the final multivariable model. Statistical analyses were performed using SAS, version 9.2 (SAS Institute, Cary, NC). All tests were 2-tailed, P values of less than 0.05 were considered statistically significant.

Results

Study Infants

There were 2156 live infants (257 CTX, 1899 CTX-unexposed) including 23 sets of twins, born to 2133 HIV-infected women in the study cohorts. A total of 93 infants had detected HIV infection through 7 months of age and were excluded from analysis. Forty-two infants who died prior to 1 month of age and 246 infants who did not attend the 1 month visit were also excluded. A total of 1775 infants were included in the cohort. Seventy infants did not have available hematology measurements at 3 or 6 months of age, leaving 1705 analyzable infants (203 CTX, 1502 CTX-unexposed). One CTX infant did not initiate cotrimoxazole (Figure 2).

Maternal and infant characteristics are summarized in Table 1. A total of 645 (37.8%) of infants formula-fed from birth, while 1060 (62.2%) breastfed from birth. Mothers of CTX infants had higher incomes, more education, and higher prevalence of antenatal HAART exposure compared with mothers of infants not receiving cotrimoxazole (reflecting differences in study design and eligibility criteria for participants in these studies). Perhaps as a consequence of maternal HAART (which was more frequently used in the CTX cohort than in the historical cohorts), [12,26,27] CTX infants were more frequently premature and small for gestational age, and had lower hemoglobin concentrations at 1 month than the infants not receiving cotrimoxazole.

Completeness of Hematology Data

Hematologic measurements were available at either 3 or 6 months for 96% of infants. Measurements at both of these visits were available for 81%. There were not significant differences in completeness of study measurements by exposure to cotrimoxazole or maternal HAART, feeding method, or study cohort.

Adherence to Cotrimoxazole

Among infants initiating cotrimoxazole, 94% completed the prophylaxis through 6 months as assessed through pharmacy refills. Reasons for premature discontinuation in the 13 infants were as follows: death (3 cases of gastroenteritis and 1 case of possible sudden infant death syndrome), mild rash (1), mild persistent diarrhea (1), mother opted to stop medication without specifying reason (1), and did not return for medication refill (6).

Primary Outcomes

Severe anemia. Protocol-defined severe anemia (grade 3 or 4) developed in 2 CTX infants (1.0%) and in 85 CTX-unexposed infants (5.7%). Nearly all infants with severe anemia (93%) were breastfed. In an analysis stratified by infant feeding method, there were no significant differences in the risk of severe anemia by prophylactic cotrimoxazole exposure – odds ratio 0.57 (95% confidence interval [CI] 0.12 to 2.77), exact Cochran-Mantel-Haenszel $P = 0.75$). The stratified estimates of the risk difference, -0.69% (95% CI -2.1 to 0.76%), indicate that a clinically

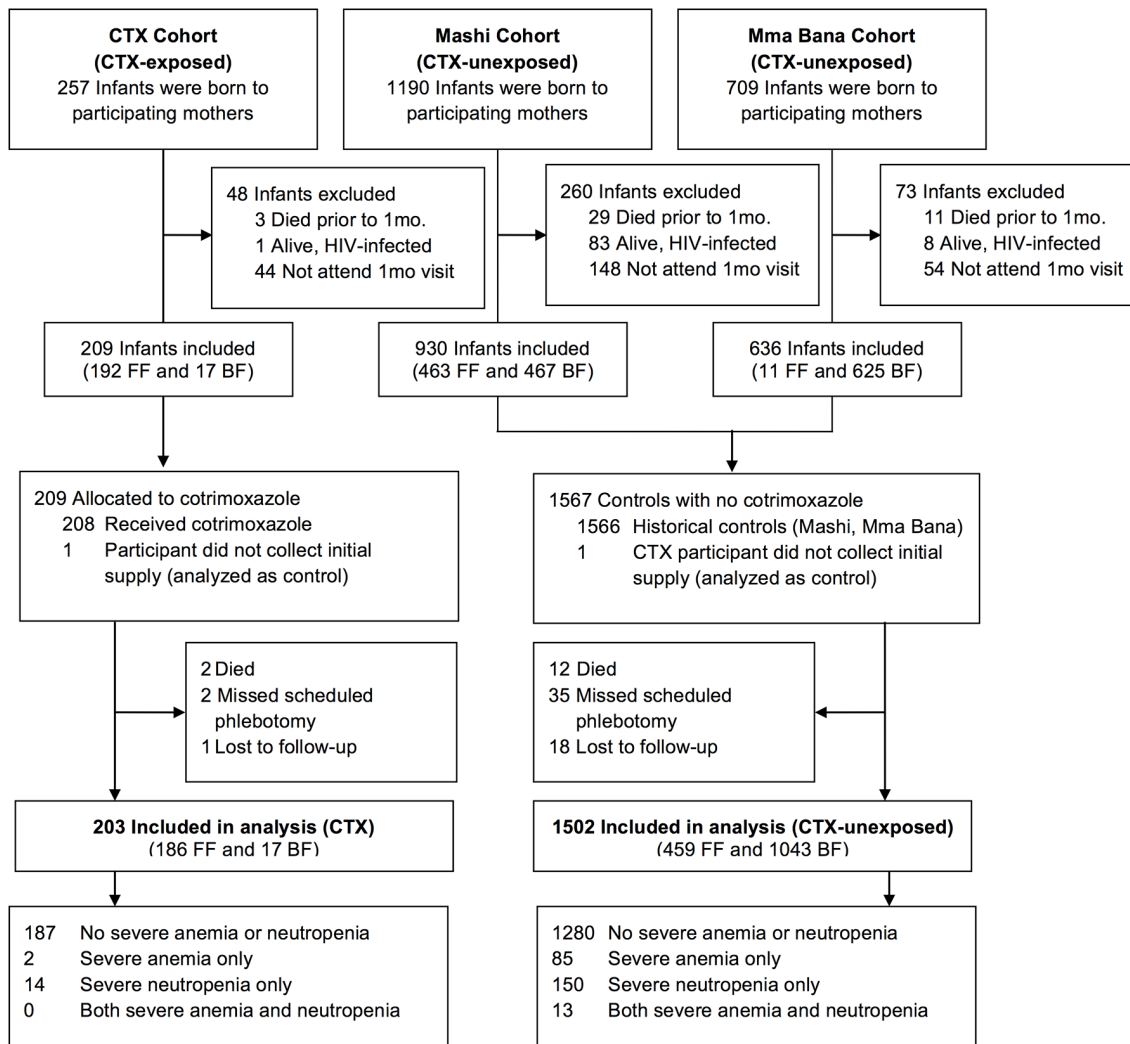


Figure 2. Enrollment and follow-up of study infants. HIV-uninfected infants in the Mashi and Mma Bana trials did not receive cotrimoxazole prophylaxis and serve as a comparison group to the new cohort (CTX) that received cotrimoxazole prophylaxis. CTX, cotrimoxazole; 1 mo., one month; FF, formula-fed; BF, breastfed.
doi:10.1371/journal.pone.0074171.g002

significant increase in the risk of severe anemia with cotrimoxazole exposure is unlikely (Table 2).

Findings in multivariable analyses were similar. In a model adjusted for infant feeding method, antenatal maternal HAART, and other significant baseline factors, the estimated adjusted odds ratio (aOR) for severe anemia for CTX versus CTX-unexposed was 0.35 (0.07 to 1.65), $P=0.18$. In this model, breastfeeding, antenatal maternal HAART, male sex, and low maternal income were all significantly associated with increased risk of severe anemia (Table 3).

Recovery of hemoglobin concentrations from the expected physiologic nadir between 6 and 8 weeks [23] did not appear to be adversely affected by cotrimoxazole in formula-fed infants. Mean hemoglobin for formula-fed infants receiving cotrimoxazole measured at 6 months was slightly higher than that of infants not receiving cotrimoxazole measured at 7 months, 11.9 versus 11.6 g/dL, respectively ($P=0.010$).

Severe neutropenia. Fourteen CTX infants (6.9%) and 150 CTX-unexposed infants (10.0%) developed severe neutropenia. These events were also clustered among breastfed infants (133 of

154 severe neutropenia incidents occurred in breastfed infants). Stratifying by infant feeding method, CTX was not significantly associated with severe neutropenia, OR 1.41 (0.73 to 2.69), $P=0.29$. The estimated confidence interval of the risk difference (2.0%, 95% CI -1.3 to 5.2%) indicates that an absolute increase in the proportion with severe neutropenia associated with cotrimoxazole could be as large as 5%.

After adjustment for infant feeding method, antenatal maternal HAART, and significant univariate factors, the adjusted odds ratio for severe neutropenia for CTX versus CTX-unexposed was 0.80 (95% CI 0.33 to 1.93). Prolonged infant zidovudine exposure (birth to 6 months in Mashi breastfed infants), village residence, and measures of decreased socioeconomic measures were associated with increased risk of severe neutropenia in the multivariable model.

Discussion

HIV-exposed uninfected (and predominantly formula-fed) infants who received cotrimoxazole prophylaxis from 1 through 6 months of age experienced low frequency of severe anemia or

Table 1. Cohort characteristics of HIV-exposed uninfected infants alive through 30 days of age.

	Cotrimoxazole Prophylaxis (CTX)	No Cotrimoxazole Prophylaxis (CTX-unexposed)
	N = 208	N = 1567
	n (%)	n (%)
Village residence	96 (46.2)	802 (51.2)
Maternal income		
None	68 (32.7)	869 (56.1)
<\$100	89 (42.8)	370 (23.9)
≥\$100	51 (24.5)	311 (20.1)
Maternal education		
Primary or none	52 (25.0)	399 (25.7)
Secondary	140 (67.3)	1101 (71.0)
University	16 (7.7)	51 (3.3)
Maternal HAART	208 (100)	696 (44.4)
Maternal age (years), median (IQR)	31.7 (27.6, 35.0)	27.1 (23.4, 31.6)
Maternal CD4 (cells/ μ L), median (IQR)	278 (202, 421)	362 (238, 503)
Male infant	105 (50.5)	808 (51.6)
Premature (<37 weeks)	45 (21.6)	202 (13.1)
Small for gestational age (<10 percentile)	47 (22.6)	177 (11.5)
Breastfed at discharge from maternity ward	17 (8.2)	1092 (69.7)
Infant hemoglobin (g/dL) at 1 month, median (IQR)	10.9 (9.9, 11.7)	11.1 (10.1, 12.2)
Infants with available hematology measurements	203 (97.6)	1502 (95.9)

Note: CTX, cotrimoxazole; IQR, interquartile range.
doi:10.1371/journal.pone.0074171.t001

Table 2. Severe infant anemia and severe neutropenia by prophylactic cotrimoxazole exposure.

	Cotrimoxazole Prophylaxis (CTX)	No Cotrimoxazole Prophylaxis (CTX-unexposed)
	N = 203	N = 1502
Severe Anemia		
Breast-fed infants	0/17 (0%)	81/1043 (7.6%)
Formula-fed infants	2/186 (1.1%)	4/459 (0.9%)
Stratified pooled estimates ^a		
Odds ratio (95% CI)	0.57 (0.12 to 2.77), P = 0.75 ^b	
Risk difference (95% CI)	-0.69% (-2.1% to 0.76%)	
Severe Neutropenia		
Breast-fed infants	3/17 (17.7%)	130/1040 (12.5%)
Formula-fed infants	11/186 (5.9%)	20/458 (4.4%)
Stratified pooled estimates ^a		
Odds ratio (95% CI)	1.41 (0.73 to 2.69), P = 0.29 ^b	
Risk difference (95% CI)	2.0% (-1.3% to 5.2%)	

Analysis restricted to severe anemia or neutropenia (grade 3 or 4) detected at scheduled measurements at 3 and/or 6 months of age in HIV-exposed uninfected infants in the CTX, Mashi, and Mma Bana cohorts.

Note: 95% CI, 95% confidence interval.

^aMantel-Haenszel methodology.

^bExact Cochran-Mantel-Haenszel.

doi:10.1371/journal.pone.0074171.t002

Table 3. Factors associated with severe anemia and severe neutropenia among HIV-exposed, uninfected infants.

Variable	Severe Anemia				Severe Neutropenia			
	Univariate		Multivariable		Univariate		Multivariable	
	OR (95% CI)	P-value ^a	aOR (95% CI)	P-value ^a	OR (95% CI)	P-value ^a	aOR (95% CI)	P-value ^a
Infant Cotrimoxazole, 1 to 6 months ^b	1.24 (0.23–6.81)	0.81	0.35 (0.07–1.65)	0.18	1.38 (0.65–2.93)	0.41	0.80 (0.33–1.93)	0.62
Maternal Antenatal HAART	3.04 (1.86–4.97)	<0.001	2.46 (1.45–4.18)	<0.001	0.74 (0.54–1.02) ^c	0.069	1.16 (0.53–2.52)	0.71
Breastfeeding	8.81 (3.8–20.3)	<0.001	4.84 (1.87–12.5)	0.001	2.85 (1.90–4.26) ^c	<0.001	1.75 (0.77–3.96)	0.18
Male Sex	1.57 (1.01–2.45)	0.046	1.60 (1.02–2.52)	0.042	1.29 (0.93–1.86)	0.125
Maternal personal income <\$100/month	5.45 (1.98–15.0)	0.001	5.30 (1.92–14.6)	0.001	0.94 (0.63–1.41)	0.776
Assignment to Infant Zidovudine 1 to 6 months	1.02 (0.62–1.66)	0.94	3.08 (2.22–4.28)	<0.001	2.82 (1.27–6.29)	0.011
Shared or No Toilet/Latrine	1.21 (0.67–2.17)	0.53	0.56 (0.32–0.99)	0.045	0.54 (0.30–0.97)	0.034
Maternal Education, Secondary or More	0.96 (0.58–1.58)	0.87	0.61 (0.41–0.93)	0.020	0.63 (0.41–0.96)	0.0334
Village residence	0.86 (0.56–1.32)	0.49	1.41 (1.02–1.95)	0.039	1.42 (1.02–1.99)	0.040
Maternal CD4+cell count (per 100 cells/ μ L)	0.98 (0.88–1.09)	0.73	1.02 (0.94–1.10)	0.64
Maternal Age (per 10 years)	0.83 (0.56–1.24)	0.36	0.90 (0.68–1.21)	0.496
Small for Gestational Age (<10th percentile)	1.39 (0.77–2.51)	0.28	1.22 (0.77–1.94)	0.39
Premature (<37 weeks gestation)	1.33 (0.75–2.25)	0.34	1.03 (0.95–1.11)	0.54

Prophylactic cotrimoxazole, maternal antenatal HAART use, and infant feeding method are included in the multivariable model, as are other significant factors from the univariate analysis.

OR, odds ratio; aOR, adjusted odds ratio; CI, confidence interval; HAART, highly-active antiretroviral therapy.

^aWald chi-square.

^bTo avoid confounding effect of infant feeding method, univariate estimate for effect of cotrimoxazole is restricted to formula-fed infants. Multivariable analysis includes both formula-fed and breastfed infants.

^cA modest but significant interaction was noted between feeding method and maternal HAART with increased risk of severe neutropenia associated with breastfeeding from a mother receiving HAART. However, in multivariable analysis this interaction was no longer significant.

doi:10.1371/journal.pone.0074171.t003

neutropenia during this period (1.1% and 5.9% of infants, respectively). Through comparison with historic and contemporaneous infant cohorts, we found that HIV-exposed uninfected infants assigned to cotrimoxazole prophylaxis from 1 to 6 months of age did not have significantly elevated risk for severe anemia or neutropenia. Rather, maternal HAART and breastfeeding were important factors associated with increased risk of severe hematologic events.

Despite reluctance among clinicians to use cotrimoxazole in patients at risk for anemia or neutropenia, the contribution of prophylactic cotrimoxazole to these risks has not been previously assessed in HIV-EU infants. HIV-exposed infants with anemia appear to be at increased risk of death [28] and anemic children, at least those with iron deficiency, [29] have poorer neurocognitive outcomes. In a recent analysis of data from HPTN-046 conducted in Uganda and Zimbabwe, nearly half of breastfed HIV-EU infants exposed to prolonged cotrimoxazole developed severe anemia or neutropenia by 6 months of age. [30] However, as all infants were given cotrimoxazole in that study, the analysis was unable to assess whether cotrimoxazole contributed to the high observed frequency of severe anemia or neutropenia.

It is reassuring therefore, that prolonged cotrimoxazole prophylaxis was not significantly associated with increased risk of severe anemia in the current study. While the design cannot exclude the possibility of association, the magnitude of any increased risk of severe anemia is unlikely to be of clinical

significance. The upper bound of the 95% confidence interval was less than 1% absolute increase in frequency.

The clinical importance of asymptomatic neutropenia is uncertain, particularly when normative ranges for African infants may be significantly lower than ranges in the populations used in the development of the DAIDS toxicity tables used in this and other studies. [31–33] However, the findings of this study indicate that an absolute increase in severe neutropenia related to cotrimoxazole is likely to be at most 5%. In settings where either continued breastfeeding or limited access to early infant HIV diagnosis make the use of cotrimoxazole prophylaxis a consideration, these negative findings are important to inform decisions about the optimal period for prophylaxis.

This analysis was subject to several limitations. With the majority of HIV-infected women in Botswana opting to formula-feed their infants during the study period, we were unable to enroll sufficient number of breastfeeding infants to fully assess whether cotrimoxazole is associated with severe hematologic toxicity in breastfed infants, who are at greater risk of anemia. While harmonized data collection across the study cohorts facilitated adjustment for potential confounding, some residual confounding is likely given differences in the design of the parent studies and possible temporal effects. Additionally, the observed low event frequency in the CTX cohort makes multivariable adjustment and calculation of confidence limits challenging. Despite these limitations, the findings indicate that a clinically significant impact of cotrimoxazole on severe hematologic toxicity is unlikely.

In summary, we found that prophylactic cotrimoxazole in HIV-exposed uninfected infants was not associated with an increased risk of severe anemia or of severe neutropenia, even in the setting of maternal HAART use. Concerns related to possible hematologic toxicity should not limit the use of prophylactic cotrimoxazole among HIV-exposed infants.

Supporting Information

Table S1 Comparison of Study Characteristics. Note: CTX, cotrimoxazole; ULN, upper limit of normal; AST, aspartate aminotransferase; ALT, alanine aminotransferase; HAART, highly-active antiretroviral therapy; ZDV, zidovudine; 3TC, lamivudine; NVP, nevirapine; ABC, abacavir; LPV/r, ritonavir-boosted lopinavir; PCR, polymerase chain reaction; SMX/TMP, sulfamethoxazole/trimethoprim. ^aMothers were required to be on HAART at time of delivery, consequently had met national criteria for HAART initiation previously (nadir CD4 \leq 250 cells/ μ L or AIDS). But any current CD4 count was permitted. ^bRecommended and most common antenatal regimens. Some women received alternative regimens. ^cDose of infant zidovudine varied by infant age: birth to 1 month (4 mg/kg twice daily), 1 to 2 months (4 mg/kg three times daily), and 2 to 6 months (6 mg/kg three times daily). ^dIn August 2002 protocol was amended to provide single-dose nevirapine to all infants. ^eInfants randomized

to breastfeeding and long zidovudine group, had additional measurements at 2, 3, 5, and 6 months. (DOCX)

Checklist S1 CONSORT checklist. (DOC)

Protocol S1 Study protocol “Safety of cotrimoxazole prophylaxis in HIV- and HAART-exposed infants in Botswana”. (PDF)

Acknowledgments

We would like to thank the mothers and infants in the Mashi, Mma Bana, and CTX safety studies for their participation. We are also indebted to the contributions of the entire research staff at the Botswana Harvard AIDS Institute Partnership and collaborators from the Botswana Ministry of Health and the participating clinics and hospitals. We would specifically like to acknowledge the dedication by Oaitse John, Galaletsang Motswetla, and Mmapula Khombane and the guidance offered by Erik van Widenfelt, Sikhulile Moyo, and Joesph Makhema.

Author Contributions

Conceived and designed the experiments: SDP SL RLS HJ KM ME. Performed the experiments: SDP OJ TAM AA KMP SL RLS ME. Analyzed the data: SDP MDH SL. Wrote the paper: SDP OJ MDH HJ KM TAM AA KMP ME RLS SL.

References

- World Health Organization (2006) Guidelines on co-trimoxazole prophylaxis for HIV-related infections among children, adolescents, and adults: recommendations for a public health approach. Geneva: World Health Organization.
- WHO UNAIDS, UNICEF (2008) Towards universal access : scaling up priority HIV/AIDS interventions in the health sector : progress report 2008. Geneva, Switzerland.
- Dryden-Peterson S, Jayeoba O, Hughes MD, Jibril H, Keapoletswe K, et al. (2011) Highly active antiretroviral therapy versus zidovudine for prevention of mother-to-child transmission in a programmatic setting, Botswana. *J Acquir Immune Defic Syndr* 58: 353–357.
- Shapiro RL, Hughes MD, Ogwu A, Kitch D, Lockman S, et al. (2010) Antiretroviral regimens in pregnancy and breast-feeding in Botswana. *N Engl J Med* 362: 2282–2294.
- Palombi L, Marazzi MC, Voetberg A, Magid NA (2007) Treatment acceleration program and the experience of the DREAM program in prevention of mother-to-child transmission of HIV. *AIDS* 21 Suppl 4: S65–71.
- World Health Organization (2010) Antiretroviral drugs for treating pregnant women and preventing HIV infection in infants: Recommendations for a public health approach. Geneva: World Health Organization.
- Coutsoudis A, Coovadia HM, Kindra G (2010) Time for new recommendations on cotrimoxazole prophylaxis for HIV-exposed infants in developing countries? *Bull World Health Organ* 88: 949–950.
- Fernandez Ibieta M, Ramos Amador JT, Gonzalez Tome MI, Guillen Martin S, Bellon Cano JM, et al. (2008) Anaemia and neutropenia in a cohort of non-infected children of HIV-positive mothers. *An Pediatr (Barc)* 69: 533–543.
- Le Chenadec J, Mayaux MJ, Guihenneuc-Jouyaux C, Blanche S (2003) Perinatal antiretroviral treatment and hematopoiesis in HIV-uninfected infants. *AIDS* 17: 2053–2061.
- Pacheco SE, McIntosh K, Lu M, Mofenson LM, Diaz C, et al. (2006) Effect of perinatal antiretroviral drug exposure on hematologic values in HIV-uninfected children: An analysis of the women and infants transmission study. *J Infect Dis* 194: 1089–1097.
- Bunders MJ, Bekker V, Scherpbier HJ, Boer K, Godfried M, et al. (2005) Haematological parameters of HIV-1-uninfected infants born to HIV-1-infected mothers. *Acta Paediatr* 94: 1571–1577.
- Dryden-Peterson S, Shapiro RL, Hughes MD, Powis K, Ogwu A, et al. (2011) Increased risk of severe infant anemia after exposure to maternal HAART, Botswana. *J Acquir Immune Defic Syndr* 56: 428–436.
- Feiterna-Sperling C, Weizsaecker K, Buhner C, Casteleyn S, Loui A, et al. (2007) Hematologic effects of maternal antiretroviral therapy and transmission prophylaxis in HIV-1-exposed uninfected newborn infants. *J Acquir Immune Defic Syndr* 45: 43–51.
- Bae WH, Wester C, Smeaton LM, Shapiro RL, Lockman S, et al. (2008) Hematologic and hepatic toxicities associated with antenatal and postnatal exposure to maternal highly active antiretroviral therapy among infants. *AIDS* 22: 1633–1640.
- Lahoz R, Noguera A, Rovira N, Catala A, Sanchez E, et al. (2009) Antiretroviral-Related Hematologic Short-term Toxicity in Healthy Infants: Implications of the New Neonatal 4-Week Zidovudine Regimen. *Pediatr Infect Dis J*.
- Imrie KR, Prince HM, Couture F, Brandwein JM, Keating A (1995) Effect of antimicrobial prophylaxis on hematopoietic recovery following autologous bone marrow transplantation: ciprofloxacin versus co-trimoxazole. *Bone Marrow Transplant* 15: 267–270.
- Woods WG, Daigle AE, Hutchinson RJ, Robison LL (1984) Myelosuppression associated with co-trimoxazole as a prophylactic antibiotic in the maintenance phase of childhood acute lymphocytic leukemia. *J Pediatr* 105: 639–644.
- Tapp H, Savarirayan R (1997) Megaloblastic anaemia and pancytopenia secondary to prophylactic cotrimoxazole therapy. *J Paediatr Child Health* 33: 166–167.
- Ssali F, Stohr W, Munderi P, Reid A, Walker AS, et al. (2006) Prevalence, incidence and predictors of severe anaemia with zidovudine-containing regimens in African adults with HIV infection within the DART trial. *Antivir Ther* 11: 741–749.
- Moh R, Danel C, Sorho S, Sauvageot D, Anzian A, et al. (2005) Haematological changes in adults receiving a zidovudine-containing HAART regimen in combination with cotrimoxazole in Cote d'Ivoire. *Antivir Ther* 10: 615–624.
- Toure S, Gabillard D, Inwoley A, Seyler C, Gourvellec G, et al. (2006) Incidence of neutropenia in HIV-infected African adults receiving co-trimoxazole prophylaxis: a 6-year cohort study in Abidjan, Cote d'Ivoire. *Trans R Soc Trop Med Hyg* 100: 785–790.
- Brown MS (1988) Physiologic Anemia of Infancy: Normal Red-Cell Values and Physiology of Neonatal Erythropoiesis. In: Stockman JA, editor. *Developmental and Neonatal Hematology*. New York: Raven Press.
- O'Brien RT, Pearson HA (1971) Physiologic anemia of the newborn infant. *J Pediatr* 79: 132–138.
- Botswana Ministry of Health (2008) Botswana 2008 National HIV/AIDS Guidelines, 1 November 2008 Edition. Ministry of Health, Botswana.
- NIH DoA- (2009) Division of AIDS Table for Grading the Severity of Adult and Pediatric Adverse Events, Version 1.0 December 2004: Clarification August 2009. National Institutes of Health.
- Powis KM, Kitch D, Ogwu A, Hughes MD, Lockman S, et al. (2011) Increased risk of preterm delivery among HIV-infected women randomized to protease versus nucleoside reverse transcriptase inhibitor-based HAART during pregnancy. *J Infect Dis* 204: 506–514.
- Powis KM, Smeaton L, Ogwu A, Lockman S, Dryden-Peterson S, et al. (2011) Effects of in utero antiretroviral exposure on longitudinal growth of HIV-exposed uninfected infants in Botswana. *J Acquir Immune Defic Syndr* 56: 131–138.
- Chatterjee A, Bosch RJ, Kupka R, Hunter DJ, Msamanga GI, et al. (2009) Predictors and consequences of anaemia among antiretroviral-naive HIV-infected and HIV-uninfected children in Tanzania. *Public Health Nutr*: 1–8.
- World Health Organization (2001) Iron deficiency anaemia: assessment, prevention, and control. Geneva: World Health Organization.

30. Aizire J, Fowler MG, Wang J, Shetty AK, Stranix-Chibanda L, et al. (2012) Extended prophylaxis with nevirapine and cotrimoxazole among HIV-exposed uninfected infants is well tolerated. *Aids* 26: 325–333.
31. Wells J, Shetty AK, Stranix L, Falkovitz-Halpern MS, Chipato T, et al. (2006) Range of normal neutrophil counts in healthy zimbabwean infants: implications for monitoring antiretroviral drug toxicity. *J Acquir Immune Defic Syndr* 42: 460–463.
32. Mwinga K, Vermund SH, Chen YQ, Mwatha A, Read JS, et al. (2009) Selected hematologic and biochemical measurements in African HIV-infected and uninfected pregnant women and their infants: the HIV Prevention Trials Network 024 protocol. *BMC Pediatr* 9: 49.
33. Kourtis AP, Bramson B, van der Horst C, Kazembe P, Ahmed Y, et al. (2005) Low absolute neutrophil counts in African infants. *J Int Assoc Physicians AIDS Care (Chic)* 4: 73–76.