



DIGITAL ACCESS TO SCHOLARSHIP AT HARVARD

Genes Involved in the Evolution of Herbivory by a Leaf-Mining, Drosophilid Fly

The Harvard community has made this article openly available.
[Please share](#) how this access benefits you. Your story matters.

Citation	Whiteman, Noah K., Andrew D. Gloss, Timothy B. Sackton, Simon C. Groen, Parris T. Humphrey, Richard T. Lapoint, Ida E. Sønderby, et al. 2012. Genes Involved in the Evolution of Herbivory by a Leaf-Mining, Drosophilid Fly. <i>Genome Biology and Evolution</i> 4, no. 9: 788–804.
Published Version	doi:10.1093/gbe/evs063
Accessed	February 19, 2015 2:28:43 PM EST
Citable Link	http://nrs.harvard.edu/urn-3:HUL.InstRepos:11878759
Terms of Use	This article was downloaded from Harvard University's DASH repository, and is made available under the terms and conditions applicable to Other Posted Material, as set forth at http://nrs.harvard.edu/urn-3:HUL.InstRepos:dash.current.terms-of-use#LAA

(Article begins on next page)

Genes Involved in the Evolution of Herbivory by a Leaf-Mining, *Drosophilid* Fly

Noah K. Whiteman^{1,2,*}, Andrew D. Gloss^{1,†}, Timothy B. Sackton^{2,†}, Simon C. Groen^{2,8}, Parris T. Humphrey¹, Richard T. Lapoint¹, Ida E. Sønderyb^{3,9}, Barbara A. Halkier³, Christine Kocks^{4,5,6,10}, Frederick M. Ausubel^{5,7,†}, and Naomi E. Pierce^{2,†}

¹Department of Ecology and Evolutionary Biology, University of Arizona

²Department of Organismic and Evolutionary Biology and Museum of Comparative Zoology, Harvard University

³Department of Plant Biology and Biotechnology, Faculty of Life Sciences, University of Copenhagen, Denmark

⁴Department of Pediatrics, Massachusetts General Hospital, Boston, Massachusetts

⁵Department of Molecular Biology, Massachusetts General Hospital, Boston, Massachusetts

⁶Department of Pediatrics, Harvard Medical School

⁷Department of Genetics, Harvard Medical School

⁸Present address: Department of Plant Sciences, University of Cambridge, United Kingdom

⁹Present address: Department of Medical Genetics, Oslo University Hospital, Ullevål and Institute of Psychiatry, University of Oslo, Norway

¹⁰Present address: Max Delbrueck Center for Molecular Medicine (MDC), Berlin, Germany

*Corresponding author: E-mail: whiteman@email.arizona.edu.

†These authors contributed equally to this work.

Accepted: July 16, 2012

Data deposition: All Sanger-sequences have been deposited in GenBank under the accession number JX160018-JX160047, and all short-read sequences have been deposited through the Short Read Archive at NCBI under the accession number SRA054250.

Abstract

Herbivorous insects are among the most successful radiations of life. However, we know little about the processes underpinning the evolution of herbivory. We examined the evolution of herbivory in the fly, *Scaptomyza flava*, whose larvae are leaf miners on species of Brassicaceae, including the widely studied reference plant, *Arabidopsis thaliana* (*Arabidopsis*). *Scaptomyza flava* is phylogenetically nested within the paraphyletic genus *Drosophila*, and the whole genome sequences available for 12 species of *Drosophila* facilitated phylogenetic analysis and assembly of a transcriptome for *S. flava*. A time-calibrated phylogeny indicated that leaf mining in *Scaptomyza* evolved between 6 and 16 million years ago. Feeding assays showed that biosynthesis of glucosinolates, the major class of antiherbivore chemical defense compounds in mustard leaves, was upregulated by *S. flava* larval feeding. The presence of glucosinolates in wild-type (WT) *Arabidopsis* plants reduced *S. flava* larval weight gain and increased egg–adult development time relative to flies reared in glucosinolate knockout (GKO) plants. An analysis of gene expression differences in 5-day-old larvae reared on WT versus GKO plants showed a total of 341 transcripts that were differentially regulated by glucosinolate uptake in larval *S. flava*. Of these, approximately a third corresponded to homologs of *Drosophila melanogaster* genes associated with starvation, dietary toxin-, heat-, oxidation-, and aging-related stress. The upregulated transcripts exhibited elevated rates of protein evolution compared with unregulated transcripts. The remaining differentially regulated transcripts also contained a higher proportion of novel genes than the unregulated transcripts. Thus, the transition to herbivory in *Scaptomyza* appears to be coupled with the evolution of novel genes and the co-option of conserved stress-related genes.

Key words: *Arabidopsis*, *Drosophila*, glucosinolates, herbivory, host specialization, transcriptome.

Introduction

Phytophagous insects are among the most evolutionarily successful radiations. Herbivorous taxa comprise almost 50% of

living insect species and 25% of living metazoan species (Ehrlich and Raven 1964; Bernays 1998) and are more diverse than their aphytophagous sister lineages (Mitter and Farrell

© The Author(s) 2012. Published by Oxford University Press on behalf of the Society for Molecular Biology and Evolution.

This is an Open Access article distributed under the terms of the Creative Commons Attribution Non-Commercial License (<http://creativecommons.org/licenses/by-nc/3.0/>), which permits unrestricted non-commercial use, distribution, and reproduction in any medium, provided the original work is properly cited.

1988; Farrell 1998). Adapting to a herbivorous lifestyle is thought to have been a difficult transition for most insects, however, due to morphological and physiological challenges of consuming living plant tissues that are typically well defended against insects (Frankel 1959; Ehrlich and Raven 1964; Southwood 1973). Some antiherbivore defenses, including insecticidal compounds produced by plants, are dramatically induced within hours of herbivore attack and are tailored toward specific guilds of insect enemies (Kunitz 1945; Bostock 2005; Textor and Gershenson 2009). In addition, these compounds are often effective against other natural enemies, such as microbes (Fan et al. 2011), and vertebrates (Magnanou et al. 2009).

The genomic changes that accompany a shift from an aphytophagous to phytophagous lifestyle are not well understood. The transition to herbivory has evolved independently many times in the insects and frequently involved adaptation to a more specialized host plant range. Indeed, most herbivorous species are specialized in host range and are only able to complete development on a limited number of species. Many evolutionary changes are likely to be required for a successful transition to herbivory, including the ability to find suitable host plants, utilize potentially nutritionally imbalanced plant tissues, and cope with host plant defenses (Bernays and Chapman 1994; Govind et al. 2010).

To study the transition to herbivory from an evolutionary perspective, we have focused on a recently derived herbivorous species that is closely related to a model genetic species. Our long-term goal is to understand how the evolution of novel genes and/or the recruitment of existing metabolic or signaling pathways have enabled herbivores to adapt to a fundamentally new niche. Most phytophagous insects are lepidopterans or coleopterans. Because the evolution of herbivory in these lineages is estimated to have occurred in the Cretaceous, 145–65 million years ago (Whalley 1977; Moran 1989; Labandeira et al. 1994; Bernays 1998; Farrell 1998), using comparative genomics to dissect the genetic bases of these transitions would be difficult. However, herbivory has also evolved many times in dipterans (Labandeira 2003), and the family Drosophilidae includes 12 species with published genome sequences and at least two genera (*Scaptomyza* and *Scaptodrosophila*) with phytophagous members (Hackman 1959; Bock and Parsons 1975; Clark et al. 2007). These provide the opportunity to analyze more recent transitions to herbivory.

The *Scaptomyza* lineage is nested in the paraphyletic subgenus *Drosophila* (O'Grady and Desalle 2008). Most of the described drosophilid species (ca., 2,000) are saprophagous, feeding externally on microbes growing on decaying vegetation (e.g., *Drosophila melanogaster*), ripe fruits (e.g., *D. sechellia*), or fruiting bodies of fungi (e.g., *D. recens*). Although decaying vegetation and fungi can be toxin-rich and likely present a barrier to colonization (Jaenike et al. 1983; Frank and Fogleman 1992; Jones 2001, 2005; Markow and O'Grady

2005; Dworkin and Jones 2009), it seems unlikely that host plants or fungi would mount a defense response against these insects. However, drosophilids in the genus *Scaptomyza* (fig. 1) have evolved the ability to feed on living angiosperm leaves, which activate inducible defenses in response to feeding damage (Hackman 1959; Whiteman et al. 2011). It is likely that a variety of preformed and inducible defense compounds were novel traits encountered by *Scaptomyza* and other herbivorous Drosophilidae in their transition from a saprophagous to a phytophagous lifestyle.

The ancestral host plants of the earliest *Scaptomyza* herbivores are unknown, but many herbivorous *Scaptomyza* species are monophagous or oligophagous on plants in the order Brassicales (Hackman 1959). The larvae of *S. flava* feed on *Arabidopsis thaliana* (hereafter referred to as *Arabidopsis*) and other species of Brassicales in the wild (Chittenden 1902; Whiteman et al. 2011) and require living plants to complete their life cycle (Whiteman et al. 2011). Because they have been found on many members of the Brassicales and on species in a few other plant families (Caryophyllaceae and Fabaceae), we consider this species to be oligophagous (Martin 2004). We took advantage of the availability of *Arabidopsis* mutants blocking the synthesis of insecticidal compounds to test the hypothesis that major changes associated with the transition to feeding on living plants can be detected at the genomic level in *S. flava*.

We focused our attention on interactions between larval *S. flava* and glucosinolates, which are well characterized functionally and metabolically in *Arabidopsis* (Halkier and Gershenson 2006) and which we hypothesized were a likely barrier to colonization by ancestors of *S. flava*. Glucosinolates are a major barrier to insect colonization of Brassicales, including economically important crops such as canola (*Brassica napus*), broccoli, cabbage (*B. oleracea*), and papaya (*Carica papaya*). Glucosinolates (and related compounds called camalexins [Hull et al. 2000]) are amino acid-derived thioglucosides that are present constitutively in tissues of plants in the Brassicaceae and are highly inducible after herbivore attack, increasing in concentration in leaves by up to 40-fold (Halkier and Gershenson 2006; Textor and Gershenson 2009). During tissue damage, glucosinolates are hydrolyzed by endogenous myrosinases and are transformed into toxic, electrophilic mustard oils (isothiocyanates) that can damage proteins and DNA (Halkier and Gershenson 2006).

We used a variety of approaches, including genome-wide transcriptional profiling by RNA-seq, to characterize the evolutionary and functional impact of glucosinolates, a major plant antiherbivore defense, on *S. flava*. Our results provide a first glimpse into how the genomes of insects are shaped by the major ecological transition to herbivory from nonherbivorous ancestors. We found that new and conserved stress-related genes appear to be co-opted by *S. flava* in its response to host plant defenses. The powerful tools available for the genetic model organisms *Drosophila* and *Arabidopsis*

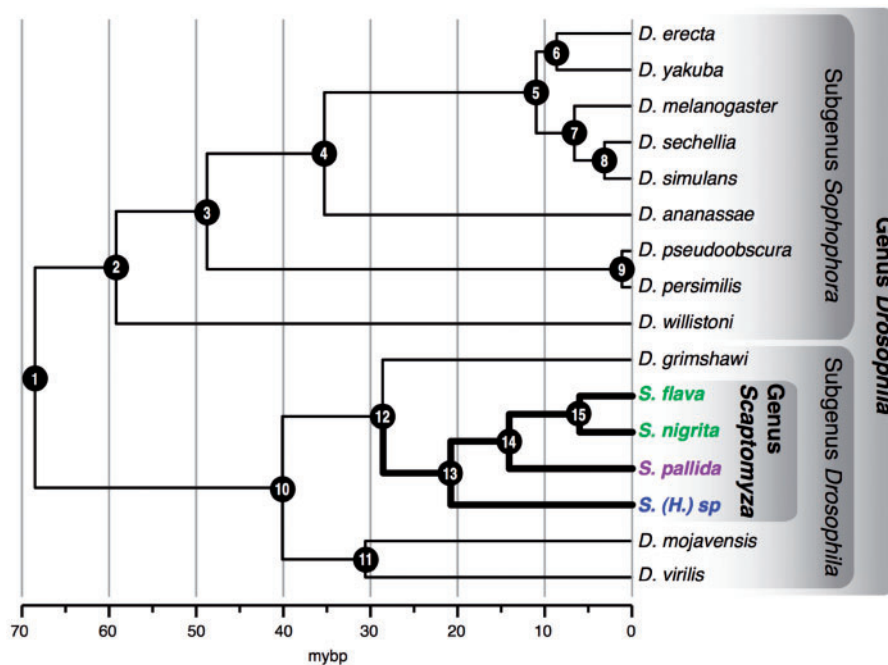


Fig. 1.—Chronogram of combined nucleotide sequence data set from 9 genes from the 12 *Drosophila* species with completely sequenced genomes and multiple *Scaptomyza* species (*S. flava*, *S. nigrita*, *S. pallida*, and *S. [Hemiscaptomyza] sp.*). Initial tree was a maximum likelihood partitioned analysis of 9 genes inferred using RAxML ($-\ln L = -29,522.877$). See table 1 for bootstrap support values for nodes. Nodes were constrained to ages estimated from Tamura et al. (2004). The two leaf-mining *Scaptomyza* species are resolved as sister taxa. *Scaptomyza (Parascaptomyza) pallida* and *Scaptomyza (Hemiscaptomyza) sp.* do not mine leaves of plants and can be reared on *Drosophila* media, and larvae are associated with decaying vegetation. The split between the most recent common ancestor of the two leaf-mining taxa, *S. flava* and *S. nigrita* (labeled in green), was estimated at $6.31(\pm 0.63)$ SD MYBP, and we inferred this to be the most recent date for the evolution of mustard leaf mining.

should facilitate functional characterization of genes identified here as candidates, allowing us to further elucidate the molecular changes that accompany the ecological transition to herbivory and host plant specialization.

Materials and Methods

Phylogenetic Inference and Dating

To determine the relationships and times of divergence between the 12 *Drosophila* species with completely sequenced genomes and *S. flava*, we inferred a phylogeny using a codon-partitioned, concatenated data set of $\sim 5,000$ genes from each of the 13 species, relying on genomic data for the 12 *Drosophila* species and transcriptome data for *S. flava*. To gain further insight into the timing of the evolution of herbivory, we also sequenced nine genes (seven nuclear and two mitochondrial) from an expanded taxonomic sample of leaf-mining and saprophagous *Scaptomyza* species and estimated phylogenetic relationships among these species and other drosophilids. In both analyses, we used independent evidence to calibrate nodes and estimate the timing of the origins of herbivory, and we evaluated nodes for

statistical support (supplementary materials and methods, Supplementary Material online).

GUS Histochemical Assay

To determine whether feeding by *S. flava* larvae induces transcription of genes essential for glucosinolate biosynthesis, *cyp79B2*-promoter-GUS fusion *Arabidopsis* plants (Millet et al. 2010) were grown at 22°C and 50% relative humidity with a 16h:8h light:dark cycle. These reporter lines yield a qualitative measure of *cyp79B2* gene expression. At 32 days following germination, a single third instar larva reared on Col-0 wild-type (WT) *Arabidopsis* plants was placed on each of two leaves per plant and allowed to feed for 12 h. At the same time, two leaves per mechanical control plant were crushed using a forceps three times mimicking the amount of area consumed by the larva at each time point. Although this treatment is unlikely to precisely mimic active feeding by *S. flava* larvae, we damaged roughly the same leaf area as a larva would over a 12-h period. An undamaged control was left untouched. Infiltration with GUS substrate solution and tissue fixation followed Millet et al. (2010). Images were visualized

using a Leica MZ6 dissecting scope with a 0.5 × lens, and results were analyzed qualitatively.

Performance Assays on Wild-Type and Glucosinolate Knockout *Arabidopsis thaliana* Lines

To determine whether glucosinolates reduce growth rates of *S. flava*, we grew WT (Col-0) *Arabidopsis*, aliphatic glucosinolate mutant (*myb28myb29*) (aliphatic glucosinolate knock out [AGKO]), indolic glucosinolate mutant (*cyp79b2cyp79b3*) (abbreviated IGKO), and an indolic and aliphatic glucosinolate mutant (*cyp79b2cyp79b3myb28myb29*) (glucosinolate knock-out [GKO]) plants to 4 weeks of age (see [supplementary materials](#) and [methods](#), [Supplementary Material](#) online, for details). We allowed approximately 400 gravid female *S. flava* flies to create feeding punctures (stipples) and lay eggs in WT ($N=60$ plants), AGKO ($N=60$ plants), IGKO ($N=60$ plants), and GKO ($N=60$ plants) *Arabidopsis* plants for 24 h by randomly arraying five plants of each genotype in a cage and repeating this for all 240 plants. For each plant individual, we quantified the number of stipples created by female flies and egg number. We compared the intercepts and slopes of stipple number versus egg number regression lines across the four plant genotypes using an analysis of covariance (ANCOVA) approach. After hatching, larvae were allowed to feed on leaves for either 3 or 5 days. We compared average larval masses across plant genotypes for each cohort (days 3 and 5) also using an ANCOVA (using the *aov* function in the statistical package R v. 2.15.0) to test for effects of crowding on larval growth rates as there were multiple larvae per plant. A subset of larvae harvested at 5 days post-egg hatching were flash frozen in LN₂ vapor and stored at -80°C . A subset of these 5-day-old larvae, two pools from two host plant lines (WT and GKO), were used for RNA-sequencing on the Illumina GAII platform.

In a separate experiment, the same plant lines were reared as above, and at 4 weeks, individuals of Col-0 ($N=15$ plants) and GKO ($N=15$ plants) were placed with approximately 50 ovipositing *S. flava* females for 24 h. Each plant was then isolated in a clear acrylic rearing box, placed in randomized arrays under lights as above, and watered to keep soil moisture constant, and larvae were allowed to develop freely. Beginning on day 15 post-egg hatch, we recorded the number of adult flies that emerged twice each day. Development time was calculated as the average number of days from egg hatch to adult emergence for a cohort of flies that emerged from a single plant.

Metabolic Profiling of *Arabidopsis* Lines Used in Herbivore Performance and Transcriptional Profiling Experiments

We conducted nontargeted metabolite profiling of polar compounds (sugars, hydroxy- and amino acids) by fractionation and gas chromatography/mass spectrometry. Glucosinolates

are not detectable by this protocol and were not analyzed using other means because the levels in GKO plants have been previously characterized and shown to be undetectable (Muller et al. 2010).

We used 4-week-old WT and GKO (*myb28myb29cyp79b2-cyp79b3*) *Arabidopsis* plants as above, which were grown under a 16 h light:8 h dark cycle (using Gro-Lux [Sylvania, Danvers, MA, USA] bulbs) at 22°C , 50% relative humidity, in a Conviron reach-in Adaptis growth chamber at the University of Arizona. Five plants of each genotype were flash frozen in LN₂ and shipped on dry ice to the Proteomics and Metabolomics Facility at Colorado State University (<http://www.pmf.colostate.edu>) for extraction and GC-MS analysis (details given in the [supplementary materials](#) and [methods](#), [Supplementary Material](#) online).

454 Titanium GSFLX Transcriptome Sequencing

RNA Preparation, cDNA Synthesis, and Normalization

In 2008, we froze under LN₂ vapor fresh eggs, larvae, pupae, and adults of *S. flava* from a population cage of flies derived from larvae collected from leaves of *Barbarea vulgaris* (Brassicaceae) in Belmont, MA, and subsequently reared on *Arabidopsis* Col-0 and Tsu-0 accessions. A subset of the adults was septicly injured with cultures of *Escherichia coli*, *Serratia marcescens*, *Pseudomonas syringae*, or *Staphylococcus aureus* to maximize gene expression from as many loci as possible (De Gregorio et al. 2001; Lemaitre and Hoffmann 2007). Details of the RNA preparation, cDNA synthesis, and normalization can be found in the [supplementary materials](#) and [methods](#), [Supplementary Material](#) online.

Library Preparation (DNA Processing) for 454 GS FLX

We followed previously published protocols to prepare the 454 GS FLX library (Toth et al. 2007). cDNAs were nebulized and size selected for an average size of 400–800 bp. 454 GS FLX Titanium-specific adapters, AdapterA and AdapterB, were ligated to the cDNA ends after end polishing. The adapter-ligated DNAs were then mobilized to the library preparation beads, and sst-cDNAs were captured. The number of molecules of the sst-cDNAs was calculated using the concentration and average fragment length for emPCR.

454 GSFLX Sequencing

We sequenced the library on a 454 GSFLX flow cell using titanium chemistry at the University of Illinois. The raw reads were processed as described later and combined with the Illumina-generated data to create a grand assembly.

Illumina GAII 72 bp Transcriptome Sequencing

RNA Preparation

Larvae harvested 5 days post-egg hatch were placed in tubes directly after harvesting from plant leaves, and masses were

obtained for performance studies described earlier. Four larval pools were obtained, two pools from Col-0 plants (pool 1, $N=20$ larvae; pool 2, $N=18$ larvae) and two from GKO plants (pool 3, $N=12$ larvae; pool 4, $N=12$ larvae). Larvae were flash frozen in LN_2 and then crushed in a Qiagen Tissue Lyser (Retsch Mixer Mill) and homogenized with 500 μl TRI REAGENT per sample, generally following the RNA extraction protocol above (for details see [supplementary materials and methods](#), [Supplementary Material](#) online). Genomic DNA was removed using a gDNA Eliminator spin column (Qiagen, Inc.). A sample of RNA from each of the four RNA pools was run on an Agilent 2100 Bioanalyzer for (RNA Nano Chip) to determine the integrity of the RNA samples.

mRNA Isolation, cDNA Synthesis, and Library Preparation (DNA Processing) for Illumina Sequencing

The Illumina mRNA sequencing sample prep kit was used to prepare libraries for each of the four RNA pools, resulting in four RNA-seq libraries that were subjected to clustering and 72 bp sequencing on an Illumina GA II instrument, following the manufacturer's protocol. These libraries were not normalized.

454 and Illumina Data Assembly

Quality Control and Preprocessing of Sequencing Data

The RNA-seq data consisted of a full plate of 454 sequencing (990,223 reads total, from normalized cDNA pools) and four lanes of 72 bp Illumina sequencing [73,147,138 reads total, from un-normalized cDNA pools from 5-day-old larvae raised on either WT or the GKO (*cyp79b2cyp79b3myb28myb29*) *Arabidopsis* plants]. Quality control and preprocessing details can be found in the [supplementary materials and methods](#), [Supplementary Material](#) online.

Contig Assembly

The filtered reads were initially assembled using the software program AbySS version 1.2.1 (Biroi et al. 2009; Simpson et al. 2009) as is described in detail in the [supplementary materials and methods](#), [Supplementary Material](#) online.

Homology Assessment and Scaffolding

To identify the closest homolog of each assembled *S. flava* contig, we first used blastx to map contigs to proteins from *D. grimshawi*, with an E value cutoff of $1e-10$. We retained all hits for which at least 20% of the *S. flava* contig hits a *D. grimshawi* protein; we then filtered out all hits with E values more than 10 orders of magnitude worse than the best hit. We also ran an all-against-all blastn search with an E -value cutoff of $1e-10$ and using the *S. flava* contigs as both query and subject to identify potential paralogs that were not collapsed by our assembly procedure. For this blastn run, we kept all hits, regardless of E value, where the hit covered at least

90% of the smaller contig. We then identified assembled transcript regions (transcripts) as sets of contigs and *D. grimshawi* proteins that are all connected to each other via blastn or blastx hits, using an undirected graph algorithm implemented in custom Perl scripts. We then generated three different transcript sets based on our confidence in assignment. The high confidence set is based on blastx hits with at least 85% coverage; the medium confidence set is based on blastx hits with between 60% and 85% coverage; and the low confidence set is based on blastx hits with between 20% and 60% coverage. In all three sets, we flagged contigs if they 1) were less than 200 bp and a singleton, 2) had a significant blast hit to a non-*Drosophila* sequence in nr, but not to any *Drosophila*, or 3) had no blast hits with at least the minimum 20% query coverage. For all confidence sets, we built assemblies by merging adjacent or overlapping *S. flava* sequence that maps to a given *D. grimshawi* protein and filling in regions of the *D. grimshawi* protein not sequenced in our cDNA libraries as Ns. These merged sequences form the basis of the molecular evolutionary analysis ([supplementary table S5](#), [Supplementary Material](#) online) and differential regulation analysis described later ([supplementary table S6](#), [Supplementary Material](#) online).

By scaffolding contigs and merging potential *S. flava* paralogs identified via all-against-all blastn searches, we collapsed the original contigs to assembled transcripts. These transcripts were then filtered to remove short contigs and those with weak or complex blast hits, which served as the transcriptome against which the short-reads from Illumina sequencing of the 5-day-old larvae from WT and GKO plants were mapped to quantify differential regulation of *S. flava* genes.

Quantifying Differential Gene Regulation Using the Transcriptome and RNA-Seq

Here, we used RNA-seq to measure differential expression between the transcriptomes of flies raised on WT and GKO *Arabidopsis*. We mapped each of our four filtered Illumina RNA-seq samples against the *S. flava* (scap) contig set derived from all transcriptome data using Bowtie 0.12.5 (Langmead et al. 2009) with the following command line parameters: `-S -n 2 -e 80 -l 25 -nomaqround -y -a -best -strata -m 1 -solexa1.3-quals -sam-nosq -p 2`. We were able to uniquely map between 37.9% and 43.79% of reads in each sample to our filtered contig data set, representing 28.2 million total mapped sequences. We then counted the number of reads mapped to each contig and summed across all contigs in each transcript to generate a count of reads mapped to each transcript in each condition. We tested for differential expression of transcripts in larvae reared on the two *Arabidopsis* lines by first summing the reads mapped across all contigs in each transcript to generate a count of reads mapped to each transcript in each pool, and estimating \log_2 -fold change per treatment (WT-GKO) using a negative binomial model

implemented in the R/Bioconductor package DESeq (Anders and Huber 2010).

Estimating Rates of Molecular Evolution

The ratio of nonsynonymous substitutions per nonsynonymous site normalized by the number of synonymous substitutions per synonymous site (d_N/d_S) was calculated to estimate rates of molecular evolution in *S. flava* and across the subgenus *Drosophila*, within which the genus *Scaptomyza* is nested. First, we identified all one-to-one homologs present in *S. flava* and the three species in the subgenus *Drosophila* with sequenced genomes: *D. grimshawi*, *Drosophila virilis*, and *Drosophila mojavensis* (details provided in the [supplementary materials and methods, Supplementary Material](#) online).

To estimate d_N/d_S for each alignment, we used a maximum likelihood framework implemented in the codeml module of PAML version 4 (Yang 2007). The unrooted input tree (*D. virilis*, *D. mojavensis*, (*D. grimshawi*, *S. flava* #)) was used with the two-ratio branch model, which estimates one d_N/d_S in a specified foreground branch (*S. flava* in this case) and a separate d_N/d_S across the rest of the tree. As a quality control, we excluded from analysis all homolog sets where greater than 5% of sites were variable in the *S. flava* contig or where d_S in *S. flava* was greater than 0.8158 (two times the median d_S across the full *S. flava* data set), which may represent contig misassembly or sequence misalignment, respectively. We also excluded sets where d_S in *S. flava* was less than 0.01 or less than 70 codons were present without gaps in all four species to avoid unreliable estimates of d_N/d_S due to insufficient data. Results of all these analyses are reported in [supplementary table S6, Supplementary Material](#) online.

Filtering Developmentally Regulated Genes

We mined a high-throughput gene expression data set constructed using *D. melanogaster*, in which Graveley et al. (2011) used Illumina RNA-seq to quantify gene expression across 30 developmental stages in isogenic ($y^1; cn bw^1 sp^1$) *D. melanogaster* flies. Raw expression values expressed as reads per kilobase per million reads mapped (Graveley et al. 2011) were obtained from the analysis of Gelbart and Emmert (2010), which intersected coverage expression data with FlyBase exons.

We excluded data from *D. melanogaster* genes that had been split into multiple separate gene models as of 5 September 2011. A gene was flagged as developmentally confounded if the \log_2 (fold change) between 1) second instar larvae and larvae 12 h into third instar or 2) 12-h third instar larvae and larvae that had just entered the third instar puffstage, was greater than 50% of the \log_2 (fold expression change) between GKO- and WT-fed larvae in our experiment.

Results

Timing of the Evolution of Herbivory and Host Specialization

The date uniting the *Scaptomyza* + Hawaiian *Drosophila* using nine gene fragments (29.76 ± 2.25 millions of years before present [MYBP]) was very close to the one estimated for this node using *S. flava* transcriptomic data and genomic data for the 12 sequenced *Drosophila* species (27.06 ± 0.66 MYBP) (table 1). The divergence time for the two herbivorous taxa included in this analysis (*S. flava* and *S. nigrita*) was estimated to be $6.31 (\pm 0.63)$ MYBP, and the divergence time between this clade and *S. pallida*, which is not herbivorous, was estimated to be $14.70 (\pm 1.26)$ MYBP. These dates give a conservative estimate of the range (6–16 MYBP) within which herbivory and mustard specialization likely evolved.

Phenotypic Consequences of *Arabidopsis* Antiherbivore Defenses on *S. flava*

We first tested whether herbivory by *S. flava* larvae activated the glucosinolate biosynthetic pathway in *Arabidopsis*. We qualitatively assayed transcriptional activity of the *Arabidopsis cyp79b2* gene in response to feeding by third instar *S. flava* larvae that were placed on adult *Arabidopsis cyp79b2promoter:β-glucuronidase* (GUS) reporter plants and allowed to form mines for 12 h. *Arabidopsis cyp79b2* encodes a cytochrome P450 enzyme required for indolic glucosinolate biosynthesis (Hull et al. 2000; Muller et al. 2010). Although there was only modest transcriptional (GUS) activity in leaves that were mechanically wounded (repeatedly) with stainless steel forceps, the *Arabidopsis cyp79b2* promoter drove strong transcriptional induction in leaf tissue surrounding actively feeding larvae (fig. 2). Little transcriptional activity was observed in unwounded control leaves (fig. 2).

We next tested whether glucosinolates are involved in resistance against *S. flava* by rearing larvae from birth on WT *Arabidopsis* or three *Arabidopsis* glucosinolate mutant lines (AGKO, IGKO, and GKO lines). We first exposed 60 plants of each of the four genotypes to *S. flava* females. The main purpose of this was simply to allow eggs to hatch in plants for the larval performance and transcriptional profiling experiments. However, we used it as an opportunity to test whether female flies varied in their feeding or oviposition preferences across the plant lines. We regressed egg number on stipple number and stipple number explained 54%–66% of the variation in egg number across the four host plant lines ([supplementary fig. S2, Supplementary Material](#) online). Although the slopes of these regression lines did not differ significantly among host plant lines (ANCOVA, $F=0.8844$, $P=0.45$), the intercepts were significantly lower for GKO ($b=1.19$, $t=-2.632$, $P=0.0091$) and AGKO ($b=-1.66$, $t=-2.656$, $P=0.0084$) plants, indicating that these genotypes, which both are lacking aliphatic glucosinolates, were

Table 1

Ages of Nodes in Figure 1 and Supplementary Figure S1, Supplementary Material Online, Inferred by r8s Analysis

Node	Calibration Range (MYBP)	Transcriptome Alignment, Age \pm SD (MYBP)	Multiple <i>Scaptomyza</i> spp.	
			Age \pm SD (MYBP)	Bootstrap Support
1	50.5–75.3	74.81 \pm 1.14	71.19 \pm 4.10	
2		62.55 \pm 0.74	61.44 \pm 3.90	100
3		48.85 \pm 0.97	50.72 \pm 3.01	100
4	35.3–53.1	35.34 \pm 0.73	36.75 \pm 1.97	100
5		8.80 \pm 1.38	11.40 \pm 0.84	100
6		6.48 \pm 0.80	8.96 \pm 0.78	57
7		4.50 \pm 0.70	6.85 \pm 0.62	100
8		2.31 \pm 0.52	3.25 \pm 0.40	100
9	0.56–1.14	1.14 \pm 0.05	1.14 \pm 0.00	100
10	34.2–51.6	43.26 \pm 0.74	41.70 \pm 2.92	100
11		32.04 \pm 0.66	31.82 \pm 2.57	34
12	23.9–37.1	27.06 \pm 0.66	29.76 \pm 2.25	100
13		–	21.69 \pm 1.76	100
14		–	14.70 \pm 1.26	100
15		–	6.31 \pm 0.63	100

NOTE.—Node numbers refer to nodes labeled in figure 1 and supplementary figure S1, Supplementary Material online. Date intervals for calibrating are in the second column. Divergence dates are in millions of years before present (MYBP) followed by standard deviation of dates estimated by profiling nodes across 1,000 bootstrapped replicates. Two phylogenies were used: the first used characters from an alignment of nucleotide sequences from the 12 *Drosophila* genomes and *Scaptomyza flava* transcriptome, and the second used 9 genes from a broader sampling of drosophilids, including herbivorous and nonherbivorous *Scaptomyza* species. All bootstrap values for the tree generated for transcriptome alignment were 100.

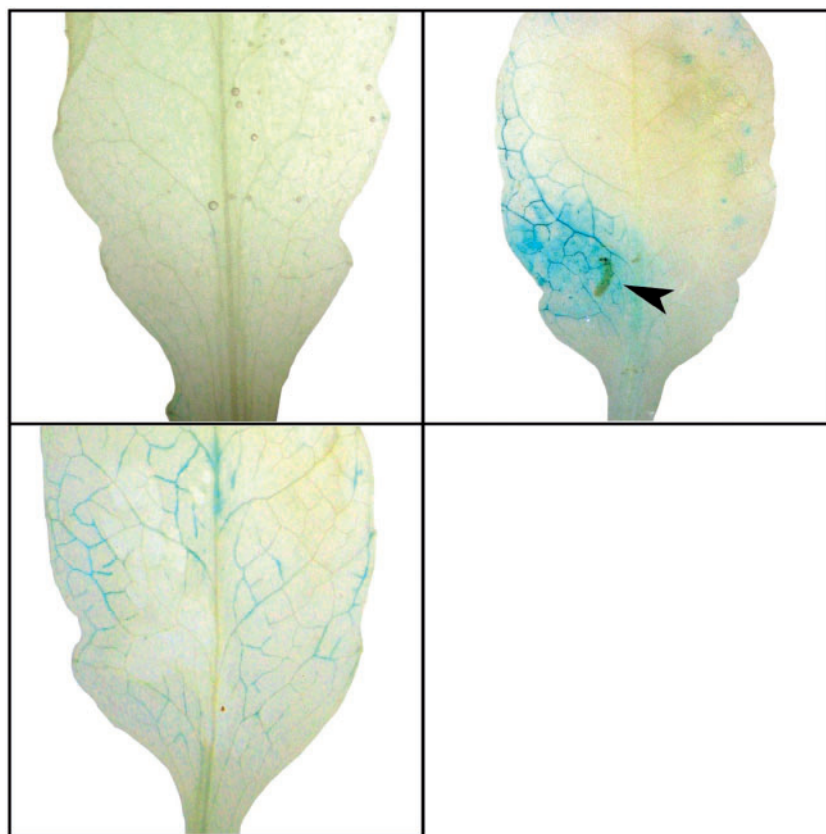


FIG. 2.—The indolic glucosinolate biosynthetic pathway is induced by *S. flava* larval feeding. Activation of the indolic glucosinolate biosynthetic *cyp79b2* gene in the *Arabidopsis thaliana* promoter:*GUS* reporter line when attacked by *S. flava* larvae for 12 h. Strong induction occurs within and around larval mines (top right) but less so when leaves are mechanically wounded (bottom left) and induction appears absent in untouched leaves (top left).

more heavily attacked by female flies than WT or IGKO plants (supplementary fig. S2, Supplementary Material online).

Using these same plants, 3 days after egg hatch, we extracted 311 larvae from WT ($N = 18$ plants), 349 larvae from AGKO plants ($N = 18$ plants), 285 larvae from IGKO plants ($N = 18$ plants), and 246 larvae from GKO ($N = 18$ plants) plants and recorded fresh larval mass. Five days after egg hatch, we extracted 351 larvae from WT ($N = 36$ plants), 364 larvae from AGKO plants ($N = 36$ plants), 319 larvae from IGKO plants ($N = 33$ plants), and 280 larvae from GKO ($N = 34$ plants) plants and recorded fresh larval mass as above. Results from the ANCOVA across all four host plant genotypes are presented in supplementary figure S3, Supplementary Material online. The number of larvae per plant was not a significant covariate with plant genotype (ANCOVA, plant genotype \times number of larvae per plant, $F_{1,64} = 0.777$, $P = 0.51$). In an additive model, total number of larvae in each plant individual was not a significant factor on its own across genotypes (plant genotype + number of larvae per plant, day 3: $F_{1,67} = 2.365$, $P = 0.129$; day 5: $F_{1,135} = 0.842$, $P = 0.36$). However, plant genotype alone remained a significant factor in explaining average larval mass ($F_{6,67} = 6.767$, $P = 0.0005$; day 5: $F_{3,135} = 7.462$, $P = 0.0001$). In addition, we found no significant ($\alpha = 0.05$) correlation between total number of larvae per plant with mass per larva using individual linear models for each plant line separately (supplementary fig. S3, Supplementary Material online). Post hoc tests showed that average masses of larvae reared on GKO plants were significantly larger than larvae reared on WT (fig. 3A) and AGKO plants (supplementary fig. S3, Supplementary Material online), 3 days and 5 days post-egg hatching. Similarly, egg-to-adult development time was more rapid in *S. flava* reared on GKO plants than in WT plants. Cohorts of adult flies emerged from GKO plants a half day earlier than flies from WT plants ($P < 0.05$, two-sided *t*-test) (fig. 3B).

Secondary plant compounds such as glucosinolates require amino acid and carbon precursors and are potentially costly to produce (Heil 2002). Although the GKO *Arabidopsis* plants are phenotypically nearly identical to WT to human observers, it is possible that the leaves of GKO plants, blocked from synthesizing glucosinolates, may retain a liberated pool of nutritive precursors such as sugars and amino acids. The observed increase in *S. flava* growth rate in GKO relative to WT plants could be explained by a buildup of these plant primary metabolites. To test this possibility, we profiled primary metabolites in above ground tissues of 4-week-old plants of each genotype (GKO and WT, $N = 5$ plants each) by fractionation and gas chromatography–mass spectrometry (GC-MS). None of the 7,893 major ion features (e.g., sugars or amino acids) detected in this survey were significantly higher ($P < 0.01$) in GKO than WT plants (supplementary table S1, Supplementary Material online). Similarly, only five compounds with best matches to the following sugars were enriched in WT plants relative to GKO: arabinofuranose, galactofuranose, turanose,

1,6-anhydro- β -D-glucose, and β -DL-arabinopyranose (raw peak areas for each feature for all samples given in supplementary table S1, Supplementary Material online).

The GKO mutant we used is also deficient in an indole alkaloid phytoalexin called camalexin (3-thiazol-2'-yl-indole) (Zhao and Last 1996). Camalexin is synthesized first from tryptophan, which is converted to indole acetaldoxime by CYP79B2 and CYP79B3 (Glawischnig et al. 2004). Because the GKO is null for *cyp79b2* and *cyp79b3*, we cannot exclude the hypothesis that *S. flava* performance and transcriptional phenotypes tested on the GKO mutant are due in part to the absence of camalexins. Camalexins have antimicrobial properties and could potentially have antiherbivore properties (Rogers et al. 1996).

Sequencing and Assembly of the *S. flava* Transcriptome

The results described earlier suggest that glucosinolates are an important defense against *S. flava* and might have been a colonization barrier during or after the evolution of herbivory in the lineage. We reasoned that *S. flava* genes that respond transcriptionally to feeding on glucosinolate-bearing plant tissues were likely to be involved in the evolutionary transition to herbivory. We therefore used next-generation sequencing (RNA-seq) to analyze the transcriptional responses of *S. flava* flies reared on WT or GKO plants. We chose first to sequence a cDNA library from an RNA pool derived from mixed life stages (eggs, larvae, pupae, and adults) of an iso-female colony of *S. flava* using 454 Titanium FLX chemistry. We combined this assembly with reads from four Illumina GA II RNA-seq reads of 5-day-old *S. flava* larvae reared on either WT or GKO plants that are described later, to maximize our coverage. This resulted in a total of 104,118 preliminary contigs with an N50 of 289 (supplementary fig. S7, Supplementary Material online).

Before further analysis, we screened these 104,118 contigs for transposable elements, simple sequence repeats, and low-complexity regions using RepeatMasker with the default options and a *Drosophila*-specific library (RepBase: repeatmaskerlibraries-20090604.tar.gz). We removed from further consideration 8,819 contigs with either evidence for TE contamination or with greater than 10% of their sequence consisting of simple sequence repeats or low complexity regions, leaving us with a total of 95,299 contigs. These form the basis of all our subsequent analysis and are referred to as the *S. flava* contig set. We then used coding sequences from *D. grimshawi* (the closest fully sequenced sister taxon to *S. flava*) as scaffolds to assemble contigs using blastx (Crawford et al. 2010). By scaffolding contigs and merging potential *S. flava* paralogs identified via all-against-all blastn searches, we collapsed the original 95,299 contigs to 36,813 or 48,872 (depending on homology cutoffs; see supplemental materials, Supplementary Material online) assembled transcripts. These transcripts were then filtered to remove short

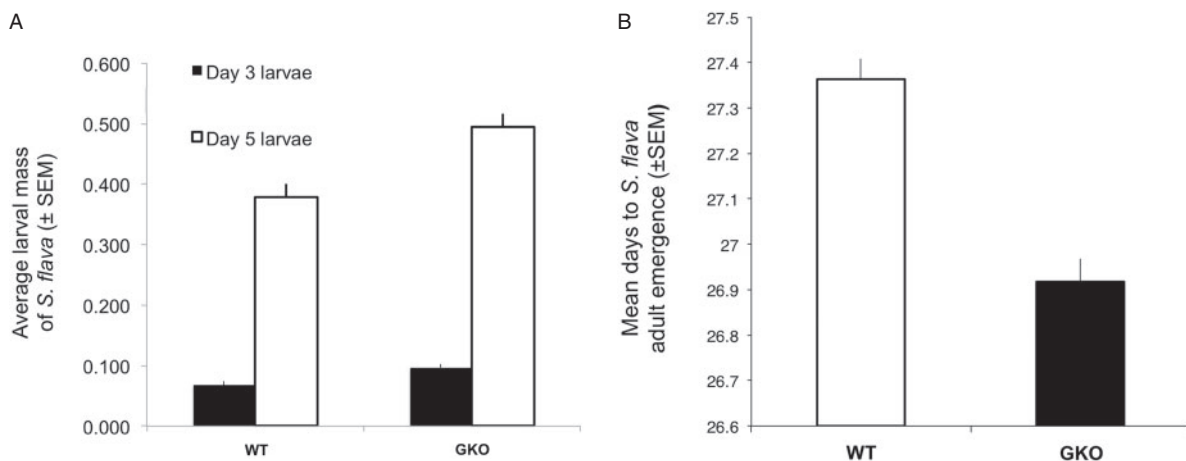


Fig. 3.—The absence of aliphatic and indolic glucosinolate biosynthesis pathways in *Arabidopsis* increases weight gain and decreases development time in *S. flava*. (A) Larvae reared from eclosion in wild-type (WT) (Col-0) or quadruple glucosinolate knockout (GKO) (*cyp79b2cyp79b3myb28myb29*) *Arabidopsis* lines that were harvested at 3 and 5 days posteclosion weighed significantly more when reared on the glucosinolate knockout. (B) *S. flava* reared from eggs in GKO *Arabidopsis* plants develop more rapidly than those reared on WT plants.

contigs and those with weak or complex Blast hits, resulting in a total of 16,476 high-confidence transcript models, which served as the transcriptome against which the short reads from Illumina sequencing of the 5-day-old larvae from WT and GKO plants were mapped to quantify differential regulation of *S. flava* genes.

Transcriptional Analysis of the *S. flava* Response to Glucosinolates

To measure differential expression between the transcriptomes of flies raised on *Arabidopsis* plants with and without glucosinolates, we collected 5-day-old larvae from the performance study, which were reared in WT and GKO plants. Using two pools of RNA for each treatment, we conducted an RNA-seq experiment using Illumina 75bp sequencing. We identified a total of 341 transcripts that were differentially expressed between 5-day-old *S. flava* larvae reared on WT and GKO *Arabidopsis* (fig. 4). Of these 341 *S. flava* transcripts, 278 (82%) were significantly upregulated (induced) and 63 (18%) were significantly downregulated (repressed) in larvae reared on WT relative to GKO plants. Glucosinolates in the diet of *S. flava* thus appear to induce many more transcripts than they repress. We found one-to-one *D. melanogaster* orthologs for 121 *S. flava* transcripts: 105 of 278 induced *S. flava* transcripts and 16 of 63 repressed *S. flava* transcripts. Gene ontology (GO) categories for 76 of these 121 differentially regulated *S. flava* transcripts with homologous *D. melanogaster* genes could be inferred in AmiGO (Ashburner et al. 2000), and there was an enrichment of GO categories related to hemolymph coagulation (biological process), plasma membrane (cellular component), and structure constituent of the cuticle/chitin (molecular function) (table 2).

Stress-Related Genes Are Regulated by Glucosinolates in *S. flava*

We evaluated the data set of 121 differentially regulated *S. flava* transcripts with *D. melanogaster* homologs in two ways. First, we compared these transcripts with the set of *D. melanogaster* genes activated or repressed by exposure to various stressors, including aging (Landis et al. 2004), the dietary toxin phenobarbital (Misra et al. 2011), heat (Sorensen et al. 2005), oxidation (Landis et al. 2004), and starvation (Harbison et al. 2005). Two genes induced by at least one stressor in *D. melanogaster* are homologous to *S. flava* transcripts induced by the presence of glucosinolates in the diet (table 3). This analysis suggests that there is at least some overlap between genes modulated by known physiological stressors in *D. melanogaster* and by the presence/absence of glucosinolates in larval host plants of *S. flava*.

The *S. flava* performance and growth rate experiments show that flies reared in WT plants are developmentally delayed relative to those reared on GKO plants (fig. 3). Thus, developmentally regulated genes that do not respond to dietary glucosinolates directly may confound gene expression differences between larvae reared on GKO or WT plants. To compensate for this potential confounding factor, we excluded *S. flava* transcripts from further analysis if developmental expression differences in the *D. melanogaster* homolog between second and early third instar larvae (Graveley et al. 2011), corresponding to possible stages at which larvae were harvested, explained >50% of the log₂ fold expression difference in *S. flava* larvae reared on WT versus GKO plants. We found 11 transcripts induced by glucosinolate consumption and 10 transcripts repressed by glucosinolate consumption in *S. flava* that passed this extremely conservative test

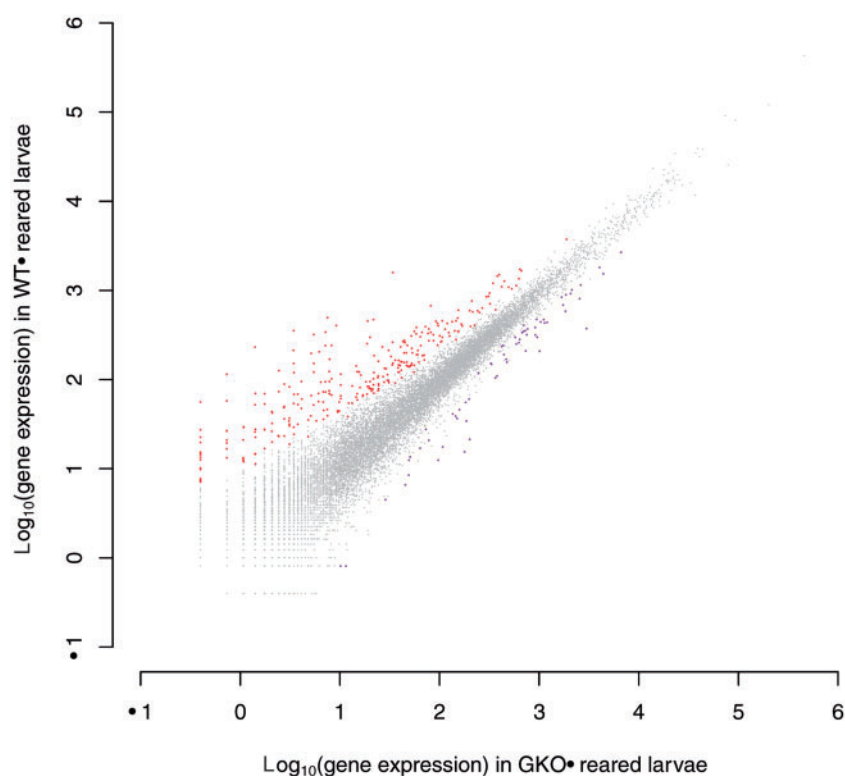


Fig. 4.—Scatterplot showing differentially regulated transcripts from *S. flava* 5-day-old larvae raised on WT versus GKO plants. Transcripts that were significantly induced by glucosinolates in the diet of *S. flava* are in red, and those repressed by glucosinolates in the diet are in purple. Two RNA pools (biological replicates) for each treatment were each sequenced on single Illumina lanes (four lanes total). These sequences were mapped back to an assembled transcriptome that was scaffolded on the *D. grimshawi* genome. A total of 341 transcripts were differentially regulated. Larvae used for this analysis were obtained from those used in the weight-gain analysis presented in figure 3.

Table 2

Selected Gene Ontology Enrichment for 76 of 121 Differentially Regulated *Scaptomyza flava* Transcripts with Homologs in *Drosophila melanogaster*

GO Category	GO Term	P Value	Sample Frequency	Background Frequency	Genes
Biological process	0050817, coagulation, metamorphosis	2.17e-03	3/76	6/13,178	<i>Muc68Ca, Hml, fon</i>
	0010171, body morphogenesis	4.11e-03	4/76	22/13,178	<i>TwdlR, TwdlS, TwdlW, TwdlBeta</i>
Cellular component	0031226, intrinsic to plasma membrane	1.95e-03	9/76	211/13,178	<i>sas, Osi19, Osi6, Osi7, Osi18, Osi15, Osi9, Osi2, Osi20</i>
Molecular function	0042302, structural constituent of cuticle	3.89e-07	11/76	146/13,178	<i>Cpr72Ec, CG7548, TwdlR, TwdlS, CG8543, TwdlW, CG8927, CG8541, Cpr64Ab, dyl, TwdlBeta</i>

(table 3); for these 21 transcripts, developmental differences between larvae are unlikely to explain the transcriptional differences we observed. Of the 11 induced loci, two were among the four found to be induced by other stressors in *D. melanogaster* (table 3), and of the 10 repressed loci, five were found to be repressed by other stressors in *D. melanogaster*. This overlap suggests that the observed correlation between the transcriptional response to stress and the transcriptional

response to dietary glucosinolates is not an artifact of developmental differences between larvae in the two samples.

Metabolic, tissue remodeling, and wound-associated genes were among the general classes of the 21 genes affected by glucosinolate uptake in *S. flava* (table 3). Thus, a set of stress-related genes appear to be induced by glucosinolates in the diet of even specialized insects that have adapted to grow in the presence of glucosinolates.

Table 3

Signature Transcripts Differentially Regulated by the Presence of Dietary Glucosinolates in *Scaptomyza flava* Whose Homologs are Differentially Regulated in the Same Direction by Environmental Stressors in *Drosophila melanogaster* and/or Those That Were Not Correlated with Development in Larvae Reared in GKO versus WT plants (developmental expression changes explain <50% of the log₂ fold change)

<i>S. flava</i> Assembled Transcript Region	Log ₂ Fold Change in Expression in <i>S. flava</i> Reared on WT vs. GKO Plants	<i>D. melanogaster</i> Homolog	FlyBase Potential Molecular Function (MF) and Biological Process (BP)	Stressors in <i>D. melanogaster</i> Causing Similar Changes
SF10967	Induced	Ance-3	MF, peptidyl-dipeptidase; BP, proteolysis	Age
SF777	Induced	Thor	MF, translational regulator; BP, response to starvation; immune response; determination of adult lifespan; response to oxidative stress; regulation of cell growth; triglyceride metabolic process; negative regulation of cell size; response to stress; antibacterial humoral response; regulation of mitochondrial translation	Starvation, phenobarbital, oxidative stress
SF4724	Induced	Muc68Ca	MF, unknown; BP, blood coagulation	N/A
SF2958	Induced	Gie	MF, GTP binding; BP, sister chromatid segregation	N/A
SF1034	Induced	Hml	MF, protein homodimerization; BP, hemolymph coagulation, hemostasis, wound healing	N/A
SF2502	Induced	CG7715	MF, chitin binding; BP, chitin metabolic process	N/A
SF8380	Induced	CG5830	MF, phosphatase; BP, unknown	N/A
SF8519	Induced	Dnal-1	MF, heat shock protein binding, unfolded protein binding; BP, response to heat	N/A
SF693	Induced	Hsc70-4	MF, chaperone binding; BP:RNA interference, axon guidance, neurotransmitter secretion, embryonic development via the syncytial blastoderm, nervous system development, axonal fasciculation, vesicle-mediated transport	N/A
SF11108	Induced	Rpp20	MF, protein binding; BP, unknown	N/A
SF12295	Induced	Mur89F	MF, chitin binding; BP, chitin metabolic process	N/A
SF10011	Repressed	hoip	MF, mRNA binding; BP, nervous system development	N/A
SF2851	Repressed	shep	MF, mRNA binding; BP, gravitaxis	N/A
SF12099	Repressed	CoVa	MF, cytochrome-c oxidase, BP:positive regulation of cell cycle	Starvation, age
SF2493	Repressed	elf3-510	MF, translation initiation factor activity; BP, mitotic spindle elongation, mitotic spindle organization	N/A
SF3615	Repressed	CG42336	MF, unknown; BP, unknown	Starvation, age
SF271	Repressed	dod	MF, peptidyl-prolyl cis-trans isomerase; BP, epidermal growth factor receptor signaling pathway	N/A
SF13113	Repressed	CG7181	MF, cytochrome-c oxidase; BP, mitochondrial electron transport, cytochrome c to oxygen	Starvation, age
SF3948	Repressed	Cpr72Ec	MF, structural constituent of chitin-based cuticle; BP, unknown	N/A
SF1424	Repressed	CG4169	MF, ubiquinol-cytochrome-c reductase; BP, mitochondrial electron transport, ubiquinol to cytochrome c	Starvation, age
SF2735	Repressed	DNasell	MF, deoxyribonuclease II; BP, nurse cell apoptosis	Starvation

Evolutionary History of Genes Differentially Regulated by Glucosinolates

The assembled transcriptome allowed us to study the evolutionary history of glucosinolate-regulated *S. flava* transcripts for which we could find homologs in the other *Drosophila* species. We tested whether these transcripts exhibit more rapid rates of evolution than the bulk of the transcriptome, as found for immunity and stress-related genes in *D. melanogaster* (Sackton et al. 2007). We used alignments of all single copy orthologs in the *S. flava* transcriptome and *D. grimshawi*, *D. virilis*, and *D. mojavensis* genomes, to conduct a foreground–background analysis in PAML (Yang 1998, 2007) to estimate ω (d_N/d_S , the rate of nonsynonymous substitutions per nonsynonymous site/synonymous substitutions per synonymous site). Using our drosophilid species tree (fig. 1), we examined ω on the branch leading to *S. flava* (foreground) and across the rest of the subgenus *Drosophila* (background). With only three evolutionarily proximate taxa in the subgenus *Drosophila*, we lacked sufficient power to test for positive selection (a subset of codons with $d_N/d_S > 1$) in the branch leading to *S. flava*.

Transcripts that were more abundant in flies that fed on WT plants (those with glucosinolates; $N = 62$ transcripts) had a significantly higher ω value in the *S. flava* lineage than transcripts whose expression was unaffected by glucosinolates ($N = 4,711$) ($P = 0.036$, Mann–Whitney U test) (fig. 5A). Interestingly, this pattern is not specific to *S. flava*, as the induced transcripts also have significantly elevated ω values in the background lineages included from the subgenus *Drosophila* (*D. grimshawi*, *D. mojavensis*, and *D. virilis*) compared with the unregulated transcripts ($P = 0.043$, Mann–Whitney U test). Accelerated evolution of genes induced by glucosinolates in *S. flava* is consistent with other studies showing that genes involved in stress responses tend to evolve rapidly (Li et al. 2003, 2004; Clark et al. 2007; Low et al. 2007; Sackton et al. 2007; Thomas 2007; Matzkin 2008).

Despite a concerted search for conserved domains on GenBank, we were able to identify *D. melanogaster* homologs of only 36% of genes (121 of 341) that were differentially regulated by glucosinolates in the diet of *S. flava*. More generally, a substantial number (5,967) of the 16,476 transcripts we identified in *S. flava* have no identifiable homologs in other species (supplementary table S6, Supplementary Material online). To provide reliable estimates of the extent of *S. flava*-specific transcripts, we therefore focused on an analysis of unassembled contigs, rather than scaffolds, because by definition scaffolds can only be assembled for transcripts with a *D. grimshawi* homolog. We used conservative criteria to define *S. flava*-specific contigs, requiring them to be at least 200 bp in length and to fail to produce a significant ($E < 1e-10$) blast hit against both the NCBI nonredundant protein database (nr) and *Drosophila*-specific databases. Using these criteria, 6,036 of 79,947 contigs were *S. flava*

specific (7.55%). We then compared the proportion of contigs in the induced, repressed, and nonregulated expression categories that have no known homologs outside of *S. flava* (fig. 5B). The set of contigs that were induced or repressed in 5-day-old larvae reared on WT versus GKO plants had more candidate *S. flava*-specific contigs than those not regulated by the presence of glucosinolates ($\chi^2 = 12.8346$, $df = 2$, $P < 0.01$). This suggests that adaptation to glucosinolates in *S. flava* potentially involved novel genes. A preliminary blast against newly available genomic sequencing reads from *S. flava* confirms that they are of fly origin (see supplementary materials and methods, Supplementary Material online). A total of 99.3% (149/150) of the *S. flava*-specific transcripts that were differentially regulated by glucosinolate consumption were represented in the preliminary genome assembly (blastn, E -value cutoff: $1e-10$).

Discussion

Herbivory (leaf mining) in the drosophilid fly genus *Scaptomyza* likely evolved relatively recently (6–16 MYBP) compared to the evolution of herbivory in the dominant orders of herbivorous insects. Because of this relatively recent acquisition of a phytophagous life history and the many genomic tools available for drosophilids and *Arabidopsis*, *S. flava*–*Arabidopsis* interactions represent an attractive and promising model system to study the evolutionary, ecological, and molecular aspects of genome adaptations that occur during the transition to herbivory in insects.

We primarily focused on the interactions between *S. flava* and glucosinolates, the major secondary compounds in their most typical host plants. *Arabidopsis* plants activate the indolic glucosinolate biosynthetic pathway in response to feeding by *S. flava* larvae, and *S. flava*, which is mostly restricted in host range to mustard plants (Martin 2004), is at least partially susceptible to glucosinolates synthesized by *Arabidopsis* as evidenced by reduced growth rate on WT versus GKO plants. Interestingly, *S. flava* larvae reared on WT plants were not significantly different in average mass from those reared on AGKO plants. AGKO plants still have indolic glucosinolates, and this suggests an important role for indolic glucosinolates or indole-derived camalexins in mediating quantitative resistance against *S. flava*. Rapid development time may be an advantage in leaf-mining species, which are heavily attacked by parasitoid wasps throughout their development (Connor and Taverner 1997; Whiteman et al. 2011). Because *S. flava* feeds mostly, but not exclusively, on plants in the order Brassicales, the finding of reduced performance of *S. flava* on WT versus GKO plants is not surprising. Oligophagous herbivores with broader host ranges, such as *S. flava*, are thought to be less efficient at coping with plant secondary compounds than are specialist species that feed on a more restricted range of hosts (Li et al. 2004). Future studies

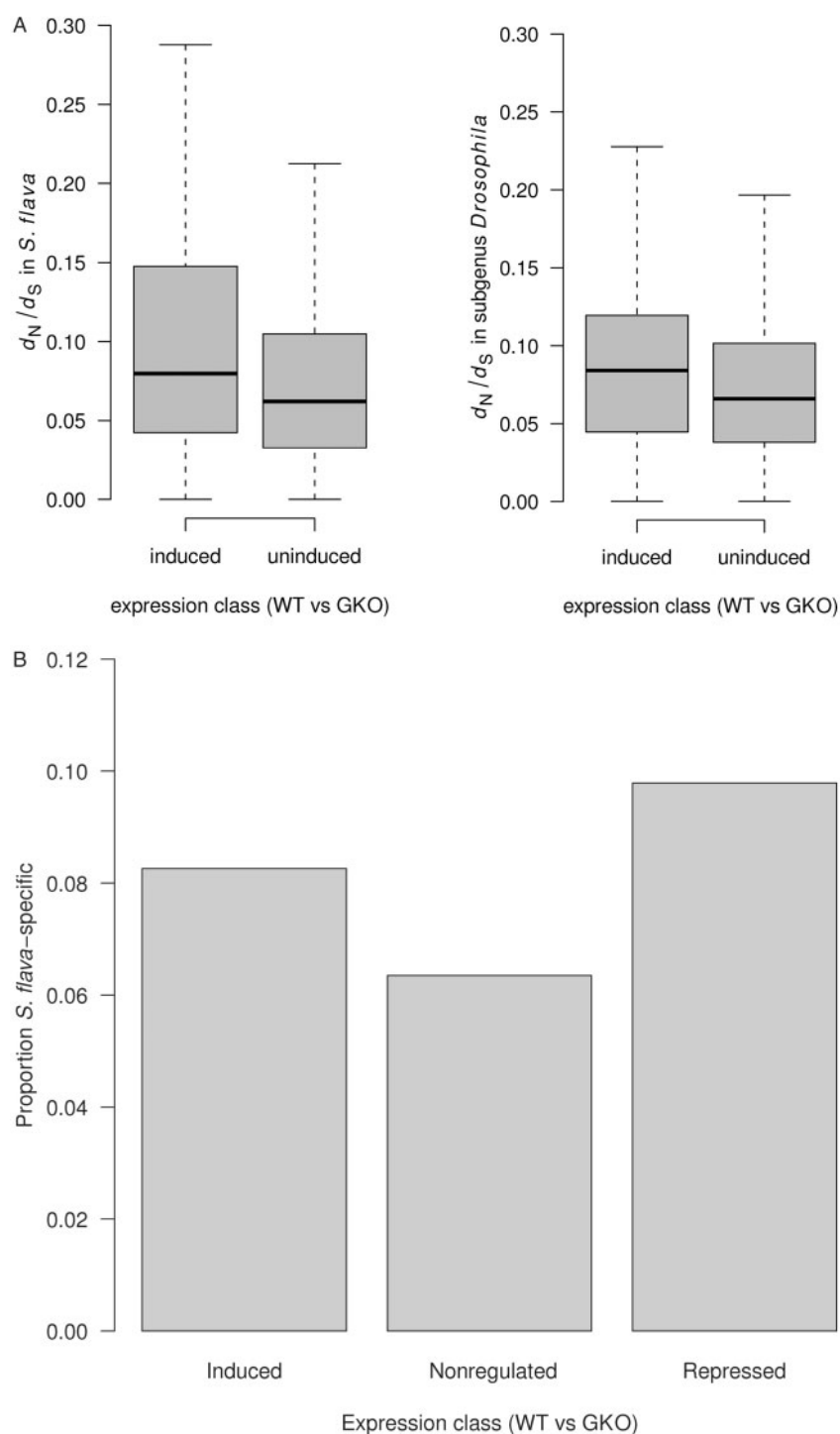


Fig. 5.—(A) Results of d_N/d_S analysis in PAML for differentially regulated genes in *S. flava* with orthologs in other *Drosophila* species. Genes induced by dietary glucosinolates in *S. flava* evolve more rapidly than genes unaffected in expression by glucosinolates. Median d_N/d_S values are significantly higher in loci induced by dietary glucosinolates in *S. flava* compared with loci not induced by glucosinolates. (B) Results of comparison of the proportion of *S. flava* contigs lacking identifiable homologs in each expression class. The difference among classes is significant by a χ^2 test ($\chi^2 = 12.8346$, $df = 2$, $P = 0.00163$). Candidate *S. flava*-specific transcripts are significantly more abundant among transcripts induced or repressed by glucosinolates in the diet of *S. flava* versus those that are uninduced by glucosinolates in the diet of *S. flava*.

should dissect the independent role of camalexins and indolic glucosinolates in mediating resistance against *S. flava*.

The assembly of an *S. flava* transcriptome allowed us to identify 341 *S. flava* genes that were differentially regulated by glucosinolates, most of which were induced rather than repressed. Only a limited number of transcriptional profiling studies have been carried out on herbivorous insects, including those in which larvae feed on plants with disabled defense pathways (Govind et al. 2010; Alon et al. 2011) or on different plant species with alternative toxins (Grbic et al. 2011). In each of these cases, hundreds of genes are differentially regulated by the presence of plant secondary compounds, a pattern similar to the one found here. However, in the case of *S. flava*, the benefit of being able to compare the transcriptome to the exceptionally well curated and annotated *D. melanogaster* genome greatly facilitated assignment of putative functions for differentially expressed genes, as well as the discovery of newly evolved loci.

The most prominent functional category identified was for stress-related genes. The fact that stress-related genes are regulated by glucosinolates in *S. flava* is intriguing because most specialist (monophagous) and oligophagous herbivores are thought to have evolved efficient and highly specialized detoxification systems to minimize physiological impacts of glucosinolate consumption. For example, *Pieris* spp. butterfly larvae do not encounter toxic glucosinolate breakdown products, such as isothiocyanates, and instead have evolved ways of preventing their formation (Wittstock et al. 2004).

We found that the *S. flava* homolog of the central *D. melanogaster* translational regulator Thor is particularly interesting because it is induced by bacterial infection, phenobarbital, oxidation stress, and starvation in *D. melanogaster* (Bernal and Kimbrell 2000; Landis et al. 2004; Harbison et al. 2005; Misra et al. 2011). Thor also serves as a “metabolic brake” during stressful conditions in *D. melanogaster* (Teleman et al. 2005). A homolog of Thor, 4E-BP1, is induced by phenethyl isothiocyanate in human cancer cell lines suggesting that there is conservation in this response to isothiocyanates across metazoans (Hu et al. 2007). Other differentially regulated *S. flava* genes with *D. melanogaster* homologs include the Tweedle genes, a large group of genes involved in formation of the insect cuticle (Cornman 2009). Isothiocyanates could potentially interact with the cuticle (and chitin) directly (McCormick et al. 1980), resulting in regulation of genes involved in cuticle and peritrophic membrane formation (Whiteman et al. 2011) and maintenance due to the presence of isothiocyanates in leaves that are encountered by endophagous feeders such as *S. flava* (van Ommen Kloeke et al. 2012). Genes involved in blood coagulation were also among those found to be differentially regulated by isothiocyanates and this finding is consistent with effects of dietary isothiocyanates on animals from other taxa. For example, dietary isothiocyanates in rats increase the rate of blood coagulation (Idris and Ahmad 1975; Shan et al. 2010).

Furthermore, we found that transcripts induced or repressed in larvae feeding on WT versus GKO plants are less evolutionarily conserved than transcripts that were not differentially regulated. We also uncovered a greater proportion of transcripts with no known homologs in the differentially regulated set, which could represent novel genes in this lineage or in the subgenus *Drosophila*. Taken together, our data indicate that the adaptation to mustard oil-bearing plants, and potentially herbivory in the lineage *Scaptomyza*, involved elaboration of pre-existing loci, potential exaptation of existing, rapidly evolving, stress-related genes, and the emergence of entirely new genes.

The functional basis of adaptation to glucosinolates in the diets of herbivores has been investigated in great detail in several lineages of insect, including the lepidopterans *Pieris rapae* (Wheat et al. 2007) and *Plutella xylostella* (Ratzka et al. 2002), the orthopteran *Schistocerca gregaria* (Falk and Gershenson 2007), the sawfly *Athalia rosae* (Opitz et al. 2011), and the aphid *Brevicoryne brassicae* (Jones et al. 2001). In each of these species, single enzymes were identified as essential for detoxification or sequestration of glucosinolate breakdown products that appear to allow for minimal contact with isothiocyanates (Muller et al. 2010). In contrast, the identities of the genes actually involved in detoxifying glucosinolates in *S. flava* remain unknown. Our results suggest that *S. flava* may be directly encountering isothiocyanates given the significant growth rate reduction when cultured in WT versus GKO plants and the fact that hundreds of transcripts are differentially regulated by the presence or absence of glucosinolates in the diet of *S. flava*. Hundreds of genes are also differentially regulated by isothiocyanates in experiments where humans and rats are given glucosinolates or isothiocyanates (Hu et al. 2004; Bhamre et al. 2009). It is unknown whether other insects relatively specialized on Brassicales plants exhibit similar patterns to *S. flava* or whether their detoxification mechanisms are so efficient that gene expression differences between those that feed on plants with and without glucosinolates are minimal (Muller et al. 2010).

Transcriptomic approaches in other insect taxa such as *D. melanogaster* would likely yield valuable insights into common pathways influenced by glucosinolates in insects and how these molecules affect insect physiology more generally (Li et al. 2009). We did not detect transcriptional differences in *S. flava* homologs of most loci involved in induction of the Phase I or Phase II enzyme systems, which are candidate mustard oil detoxification proteins in humans and insects (Wadleigh and Yu 1988; Hu et al. 2004; Bhamre et al. 2009). This may be due to examination of one time point corresponding to 5 days posteclosion. For example, elevated levels of transcripts of some of these genes, such as glutathione *S*-transferases, which are involved in glucosinolate detoxification in some insects and in humans (Wadleigh and Yu 1988), are unlikely to remain elevated for such a long period of time (Tang and Tu 1995). Post-transcriptional regulation

could explain increased GST levels in some insects treated with toxins rather than increases in mRNA levels *per se* (Tang and Tu 1995). Alternatively, structural changes could alter catalytic efficiencies of genes encoding GSTs.

In addition to providing insight into the ecological pressures faced by *Arabidopsis* in nature, analysis of a leaf-mining parasite of *Arabidopsis* that is readily cultured in the laboratory and amenable to emerging genomic technologies may also have utility in agricultural research. Herbivorous insects cause major damage to crop plants around the world and are becoming increasingly resistant to pesticides. Understanding molecular mechanisms used in overcoming natural insecticidal toxins such as glucosinolates may provide direct or indirect routes to novel insecticides or breeding strategies. Because *S. flava* attacks and completes development in all *Arabidopsis* ecotypes (accessions) and mutants that have been screened (Whiteman et al. 2011), this system provides a platform for dissecting the genetic bases of interactions between plants and chewing herbivores.

Supplementary Material

Supplementary materials, figures S1–S7, and tables S1–S7 are available at *Genome Biology and Evolution* online (<http://www.gbe.oxfordjournals.org/>).

Acknowledgments

The authors are grateful to the following for advice, or technical help, or both: Dr Amir Karger who facilitated the preliminary 454 transcriptome analyses; Dr Frans Tax and Dr Lisa Nagy who facilitated the GUS histochemical assays. Dr Doug Futuyama, Dr Jill Anderson, and anonymous reviewers provided helpful feedback on an earlier version of the manuscript. Fly specimens were collected at the Rocky Mountain Biological Laboratory and under permits from the U.S. Forest Service Rocky Mountain Region to N.K.W. N.K.W. and T.B.S. were each supported by Kirschstein National Research Service Awards (NRSA) from the National Institutes of Health (NIH) (F32AI069732 to N.K.W. and 1F32GM086950 to T.B.S.), N.K.W. by a University of Arizona Faculty Seed Grant and a set-up award from the University of Arizona, C.K. by NIH grant PO1 AI44220, F.M.A. by grants from the National Science Foundation (NSF) (grant MCB-0519898) and NIH (R37 GM48707; P30 DK040561), and N.E.P. by a grant from the NSF (grant SES-0750480). N.K.W., S.C.G., F.M.A., and N.E.P. were supported by a grant from the Harvard University's Provost Fund for Interfaculty Collaboration and a grant from the Harvard University Science and Engineering Committee Seed Fund for Interdisciplinary Science. A.D.G. and P.T.H. were each supported by NSF IGERT Program in Comparative Genomics doctoral fellowships through the University of Arizona. R.T.L. was supported by an NIH Postdoctoral Excellence in Research and Teaching (PERT)

fellowship through the Center for Insect Science at the University of Arizona (5K12GM000708-12).

Literature Cited

- Alon M, et al. 2011. Insights into the transcriptomics of polyphagy: *Bemisia tabaci* adaptability to phenylpropanoids involves coordinated expression of defense and metabolic genes. *Insect Biochem Mol Biol.* 42: 251–263.
- Anders S, Huber W. 2010. Differential expression analysis for sequence count data. *Genome Biol.* 11:R106.
- Ashburner M, Ball CA, Blake JA, et al. 2000. Gene ontology: tool for the unification of biology. The Gene Ontology Consortium. *Nat Genet.* 25: 25–29.
- Barker MS, et al. 2010. EvoPipes.net: bioinformatic tools for ecological and evolutionary genomics. *Evol Bioinform Online.* 6:143–149.
- Bernal A, Kimbrell DA. 2000. *Drosophila Thor* participates in host immune defense and connects a translational regulator with innate immunity. *Proc Natl Acad Sci U S A.* 97:6019–6024.
- Bernays EA. 1998. Evolution of feeding behavior in insect herbivores. *BioScience* 48:35–44.
- Bernays EA, Chapman RF. 1994. Host plant selection by phytophagous insects. New York: Chapman and Hall.
- Bhamre S, Sahoo D, Tibshirani R, Dill DL, Brooks JD. 2009. Temporal changes in gene expression induced by sulforaphane in human prostate cancer cells. *Prostate* 69:181–190.
- Biroi I, Jackman SD, Nielsen CB, et al. 2009. De novo transcriptome assembly with ABySS. *Bioinformatics* 25:2872–2877.
- Bock IR, Parsons PA. 1975. Adaptive radiation in the subgenus *Scaptodrosophila* of Australian *Drosophila*. *Nature* 258:602.
- Bostock RM. 2005. Signal crosstalk and induced resistance: straddling the line between cost and benefit. *Ann Rev Phytopathol.* 43:545–580.
- Castresana J. 2000. Selection of conserved blocks from multiple alignments for their use in phylogenetic analysis. *Mol Biol Evol.* 17: 540–552.
- Chittenden FH. 1902. Some insects injurious to vegetable crops. *Bulletin* 33. Washington, DC: U.S. Department of Agriculture, Division of Entomology.
- Clark AG, et al. 2007. Evolution of genes and genomes on the *Drosophila* phylogeny. *Nature* 450:203–218.
- Collinge SK, Louda SM. 1989. *Scaptomyza nigrita* Wheeler (Diptera: Drosophilidae), a leaf miner of the native crucifer, *Cardamine cordifolia* A. Gray (Bittercress). *J Kans Entomol Soc.* 62:1–10.
- Connor EF, Taverner MP. 1997. The evolution and adaptive significance of the leaf-mining habitat. *Oikos* 79:6–25.
- Cornman RS. 2009. Molecular evolution of *Drosophila* cuticular protein genes. *PLoS One* 4:e8345.
- Crawford JE, et al. 2010. De novo transcriptome sequencing in *Anopheles funestus* using Illumina RNA-seq technology. *PLoS One* 5: e14202.
- De Gregorio E, Spellman PT, Rubin GM, Lemaitre B. 2001. Genome-wide analysis of the *Drosophila* immune response by using oligonucleotide microarrays. *Proc Natl Acad Sci U S A.* 98:12590–12595.
- Dworkin I, Jones CD. 2009. Genetic changes accompanying the evolution of host specialization in *Drosophila sechellia*. *Genetics* 181:721–736.
- Ehrlich PR, Raven PH. 1964. Butterflies and plants: a study in coevolution. *Evolution* 18:586–603.
- Falk KL, Gershenzon J. 2007. The desert locust, *Schistocerca gregaria*, detoxifies the glucosinolates of *Schouwia purpurea* by desulfation. *J Chem Ecol.* 33:1542–1555.
- Fan J, et al. 2011. Pseudomonas sax genes overcome aliphatic isothiocyanate-mediated non-host resistance in *Arabidopsis*. *Science* 331:1185–1188.

- Farrell BD. 1998. "Inordinate fondness" explained: why are there so many beetles? *Science* 281:555–559.
- Frank MR, Fogleman JC. 1992. Involvement of cytochrome P450 in host-plant utilization by Sonoran Desert *Drosophila*. *Proc Natl Acad Sci U S A*. 89:11998–12002.
- Frankel G. 1959. The raison d'être of secondary plant substances. *Science* 129:1466–1470.
- Gelbart WM, Emmert DB. 2010. FlyBase high throughput expression pattern data beta version, [cited 2012 Aug 1]. Available from: <http://flybase.org/reports/FBRef0212041.html>.
- Glawischnig E, Hansen BG, Olsen CE, Halkier BA. 2004. Camalexin is synthesized from indole-3-acetaldoxime, a key branching point between primary and secondary metabolism in *Arabidopsis*. *Proc Natl Acad Sci U S A*. 101:8245–8250.
- Govind G, et al. 2010. Unbiased transcriptional comparisons of generalist and specialist herbivores feeding on progressively defenseless *Nicotiana attenuata* plants. *PLoS One* 5:e8735.
- Graveley BR, et al. 2011. The developmental transcriptome of *Drosophila melanogaster*. *Nature* 471:473–479.
- Grbic M, et al. 2011. The genome of *Tetranychus urticae* reveals herbivorous pest adaptations. *Nature* 479:487–492.
- Hackman W. 1959. On the genus *Scaptomyza* Hardy (Dipt., Drosophilidae) with descriptions of new species from various parts of the world. *Acta Zool Fennica*. 97:3–73.
- Halkier BA, Gershenzon J. 2006. Biology and biochemistry of glucosinolates. *Annu Rev Plant Biol*. 57:303–333.
- Harbison ST, Chang S, Kamdar KP, Mackay TF. 2005. Quantitative genomics of starvation stress resistance in *Drosophila*. *Genome Biol*. 6:R36.
- Heil M. 2002. Ecological costs of induced resistance. *Curr Opin Plant Biol*. 5:345–350.
- Hu R, et al. 2004. In vivo pharmacokinetics and regulation of gene expression profiles by isothiocyanate sulforaphane in the rat. *J Pharmacol Exp Ther*. 310:263–271.
- Hu J, et al. 2007. Phenethyl isothiocyanate, a cancer chemopreventive constituent of cruciferous vegetables, inhibits cap-dependent translation by regulating the level and phosphorylation of 4E-BP1. *Cancer Res*. 67:3569–3573.
- Hull AK, Vij R, Celenza JL. 2000. *Arabidopsis* cytochrome P450s that catalyze the first step of tryptophan-dependent indole-3-acetic acid biosynthesis. *Proc Natl Acad Sci U S A*. 97:2379–2384.
- Ildris R, Ahmad K. 1975. The effect of allyl isothiocyanate and other anti-thyroid compounds on blood coagulation in rats. *Biochem Pharmacol*. 24:2003–2005.
- Jaenike J, Grimaldi DA, Sluder AE, Greenleaf AL. 1983. agr-Amanitin tolerance in mycophagous *Drosophila*. *Science* 221:165–167.
- Jones AM, Bridges M, Bones AM, Cole R, Rossiter JT. 2001. Purification and characterisation of a non-plant myrosinase from the cabbage aphid *Brevicoryne brassicae* (L.). *Insect Biochem Mol Biol*. 31:1–5.
- Jones CD. 2001. The genetic basis of larval resistance to a host plant toxin in *Drosophila sechellia*. *Genet Res*. 78:225–233.
- Jones CD. 2005. The genetics of adaptation in *Drosophila sechellia*. *Genetica* 123:137–145.
- Katoh K, Toh H. 2008. Recent developments in the MAFFT multiple sequence alignment program. *Brief Bioinformatics*. 9:286–298.
- Kunitz M. 1945. Crystallization of a trypsin inhibitor from soybean. *Science* 101:668–669.
- Labandeira CC. 2003. Fossil history and evolutionary ecology of Diptera and their associations with plants. In: Weigmann B, Yeates D, editors. *The evolutionary biology of flies*. New York: Columbia University Press. p. 217–273.
- Labandeira CC, Dilcher DL, Davis DR, Wagner DL. 1994. Ninety-seven million years of angiosperm-insect association: paleobiological insights into the meaning of coevolution. *Proc Natl Acad Sci U S A*. 91:12278–12282.
- Landis GN, et al. 2004. Similar gene expression patterns characterize aging and oxidative stress in *Drosophila melanogaster*. *Proc Natl Acad Sci U S A*. 101:7663–7668.
- Langmead B, Trapnell C, Pop M, Salzberg SL. 2009. Ultrafast and memory-efficient alignment of short DNA sequences to the human genome. *Genome Biol*. 10:R25.
- Lemaitre B, Hoffmann J. 2007. The host defense of *Drosophila melanogaster*. *Annu Rev Immunol*. 25:697–743.
- Li HM, et al. 2009. Transcriptional signatures in response to wheat germ agglutinin and starvation in *Drosophila melanogaster* larval midgut. *Insect Mol Biol*. 18:21–31.
- Li W, Schuler MA, Berenbaum MR. 2003. Diversification of furanocoumarin-metabolizing cytochrome P450 monooxygenases in two papilionids: specificity and substrate encounter rate. *Proc Natl Acad Sci U S A*. 100(2 Suppl):14593–14598.
- Li X, Baudry J, Berenbaum MR, Schuler MA. 2004. Structural and functional divergence of insect CYP6B proteins: from specialist to generalist cytochrome P450. *Proc Natl Acad Sci U S A*. 101:2939–2944.
- Low WY, et al. 2007. Molecular evolution of glutathione S-transferases in the genus *Drosophila*. *Genetics* 177:1363–1375.
- Magnanou E, Malenke JR, Dearing MD. 2009. Expression of biotransformation genes in woodrat (*Neotoma*) herbivores on novel and ancestral diets: identification of candidate genes responsible for dietary shifts. *Mol Ecol*. 18:2401–2414.
- Markow TA, O'Grady PM. 2005. Evolutionary genetics of reproductive behavior in *Drosophila*: connecting the dots. *Annu Rev Genet*. 39:263–291.
- Martin NA. 2004. History of an invader, *Scaptomyza flava* (Fallen, 1823) (Diptera: Drosophilidae). *New Zealand J Zool*. 31:27–32.
- Matzkin LM. 2008. The molecular basis of host adaptation in cactophilic *Drosophila*: molecular evolution of a glutathione S-transferase gene (*GstD1*) in *Drosophila mojavensis*. *Genetics* 178:1073–1083.
- McCormick CL, Lichatowich DK. 1979. Homogeneous solution reactions of cellulose, chitin, and other polysaccharides to produce controlled-activity pesticide systems. *J Polym Sci*. 17:479–484.
- Millet YA, et al. 2010. Innate immune responses activated in *Arabidopsis* roots by microbe-associated molecular patterns. *Plant Cell* 22:973–990.
- Misra JR, Horner MA, Lam G, Thummel CS. 2011. Transcriptional regulation of xenobiotic detoxification in *Drosophila*. *Genes Dev*. 25:1796–1806.
- Mitter C, Farrell BD, Wiegmann B. 1988. The phylogenetic study of adaptive zones: has phytophagy promoted insect diversification? *Am Nat*. 132:107–128.
- Moran NA. 1989. A 48-million-year-old aphid–host plant association and complex life cycle: biogeographic evidence. *Science* 245:173–175.
- Muller R, et al. 2010. Differential effects of indole and aliphatic glucosinolates on lepidopteran herbivores. *J Chem Ecol*. 36:905–913.
- O'Grady P, Desalle R. 2008. Out of Hawaii: the origin and biogeography of the genus *Scaptomyza* (Diptera: Drosophilidae). *Biol Lett*. 4:195–199.
- Opitz SE, Mix A, Winde IB, Muller C. 2011. Desulfation followed by sulfation: metabolism of benzylglucosinolate in *Athalia rosae* (Hymenoptera: Tenthredinidae). *Chembiochem* 12:1252–1257.
- Ratzka A, Vogel H, Kliebenstein DJ, Mitchell-Olds T, Kroymann J. 2002. Disarming the mustard oil bomb. *Proc Natl Acad Sci U S A*. 99:11223–11228.
- Rogers EE, Glazebrook J, Ausubel FM. 1996. Mode of action of the *Arabidopsis thaliana* phytoalexin camalexin and its role in *Arabidopsis*-pathogen interactions. *Mol Plant Microbe Interact*. 9:748–757.
- Sackton TB, et al. 2007. Dynamic evolution of the innate immune system in *Drosophila*. *Nat Genet*. 39:1461–1468.

- Sanderson MJ. 2003. r8s: inferring absolute rates of molecular evolution and divergence times in the absence of a molecular clock. *Bioinformatics* 19:301–302.
- Shan Y, et al. 2010. Protective effect of sulforaphane on human vascular endothelial cells against lipopolysaccharide-induced inflammatory damage. *Cardiovasc Toxicol.* 10:139–145.
- Simpson JT, et al. 2009. ABySS: a parallel assembler for short read sequence data. *Genome Res.* 19:1117–1123.
- Sorensen JG, Nielsen MM, Kruhoffer M, Justesen J, Loeschcke V. 2005. Full genome gene expression analysis of the heat stress response in *Drosophila melanogaster*. *Cell Stress Chaperones.* 10:312–328.
- Southwood TRE. 1973. The insect/plant relationship—an evolutionary perspective. *Symp R Entomol Soc London.* 6:3–30.
- Stamatakis A, Hoover P, Rougemont J. 2008. A rapid bootstrap algorithm for the RAxML Web servers. *Syst Biol.* 57:758–771.
- Tamura K, Subramanian S, Kumar S. 2004. Temporal patterns of fruit fly (*Drosophila*) evolution revealed by mutation clocks. *Mol Biol Evol.* 21: 36–44.
- Tang AH, Tu C-PD. 1995. Pentobarbital-induced changes in *Drosophila* glutathione S-transferase D21 mRNA stability. *J Biol Chem.* 270: 13819–13825.
- Teleman AA, Chen Y-W, Cohen SM. 2005. 4E-BP functions as a metabolic brake used under stress conditions but not during normal growth. *Genes Dev.* 19:1844–1848.
- Textor T, Gershenzon J. 2009. Herbivore induction of the glucosinolate-myrosinase defense system: major trends, biochemical bases and ecological significance. *Phytochem Rev.* 8:149–170.
- Thomas JH. 2007. Rapid birth-death evolution specific to xenobiotic cytochrome P450 genes in vertebrates. *PLoS Genet.* 3:e67.
- Toth AL, Varala K, Newman TC, et al. 2007. Wasp gene expression supports an evolutionary link between maternal behavior and eusociality. *Science* 318:441–444.
- van Ommen Kloeke AEE, van Gestel CAM, Styriahave B, et al. 2012. Molecular and life-history effects of a natural toxin on herbivorous and non-target soil arthropods. *Ecotoxicology* 21:1084–1093.
- Wadleigh RW, Yu SJ. 1988. Detoxification of isothiocyanate allelochemicals by glutathione transferase in three lepidopterous species. *J Chem Ecol.* 14:1279–1288.
- Wernersson R, Pedersen AG. 2003. RevTrans: multiple alignment of coding DNA from aligned amino acid sequences. *Nucleic Acids Res.* 31:3537–3539.
- Whalley P. 1977. Lower cretaceous lepidoptera. *Nature* 266:526–526.
- Wheat CW, et al. 2007. The genetic basis of a plant-insect coevolutionary key innovation. *Proc Natl Acad Sci U S A.* 104: 20427–20431.
- Whiteman NK, et al. 2011. Mining the plant-herbivore interface with a leafmining *Drosophila* of *Arabidopsis*. *Mol Ecol.* 20:995–1014.
- Wittstock U, et al. 2004. Successful herbivore attack due to metabolic diversion of a plant chemical defense. *Proc Natl Acad Sci U S A.* 101:4859–4864.
- Yang Z. 1998. Likelihood ratio tests for detecting positive selection and application to primate lysozyme evolution. *Mol Biol Evol.* 15: 568–573.
- Yang Z. 2007. PAML 4: phylogenetic analysis by maximum likelihood. *Mol Biol Evol.* 24:1586–1591.
- Zerbino DR, Birney E. 2008. Velvet: algorithms for de novo short read assembly using de Bruijn graphs. *Genome Res.* 18:821–829.
- Zhang Z, Schwartz S, Wagner L, Miller W. 2000. A greedy algorithm for aligning DNA sequences. *J Comput Biol.* 7:203–214.
- Zhao J, Last RL. 1996. Coordinate regulation of the tryptophan biosynthetic pathway and indolic phytoalexin accumulation in *Arabidopsis*. *Plant Cell* 8:2235–2244.

Associate editor: Marta Wayne