



DIGITAL ACCESS TO SCHOLARSHIP AT HARVARD

Identification of Immunogenic *Salmonella enterica* Serotype Typhi Antigens Expressed in Chronic Biliary Carriers of *S. Typhi* in Kathmandu, Nepal

The Harvard community has made this article openly available.
[Please share](#) how this access benefits you. Your story matters.

Citation	Charles, R. C., T. Sultana, M. M. Alam, Y. Yu, Y. Wu-Freeman, M. K. Bufano, S. M. Rollins, et al. 2013. "Identification of Immunogenic <i>Salmonella enterica</i> Serotype Typhi Antigens Expressed in Chronic Biliary Carriers of <i>S. Typhi</i> in Kathmandu, Nepal." PLoS Neglected Tropical Diseases 7 (8): e2335. doi:10.1371/journal.pntd.0002335. http://dx.doi.org/10.1371/journal.pntd.0002335 .
Published Version	doi:10.1371/journal.pntd.0002335
Accessed	April 17, 2018 4:29:27 PM EDT
Citable Link	http://nrs.harvard.edu/urn-3:HUL.InstRepos:11855754
Terms of Use	This article was downloaded from Harvard University's DASH repository, and is made available under the terms and conditions applicable to Other Posted Material, as set forth at http://nrs.harvard.edu/urn-3:HUL.InstRepos:dash.current.terms-of-use#LAA

(Article begins on next page)

Identification of Immunogenic *Salmonella enterica* Serotype Typhi Antigens Expressed in Chronic Biliary Carriers of *S. Typhi* in Kathmandu, Nepal

Richelle C. Charles^{1,2*}, Tania Sultana^{1,3}, Mohammad Murshid Alam³, Yanan Yu¹, Ying Wu-Freeman¹, Meagan Kelly Bufano¹, Sean M. Rollins^{1,2,4}, Lillian Tsai¹, Jason B. Harris^{1,2}, Regina C. LaRocque^{1,2}, Daniel T. Leung^{1,2,3}, W. Abdullah Brooks³, Tran Vu Thieu Nga⁵, Sabina Dongol⁶, Buddha Basnyat⁶, Stephen B. Calderwood^{1,2,7}, Jeremy Farrar^{5,8}, Farhana Khanam³, John S. Gunn⁹, Firdausi Qadri^{3¶}, Stephen Baker^{5,8,10¶}, Edward T. Ryan^{1,2,11¶}

1 Division of Infectious Diseases, Massachusetts General Hospital, Boston, Massachusetts, United States of America, **2** Department of Medicine, Harvard Medical School, Boston, Massachusetts, United States of America, **3** International Centre for Diarrhoeal Disease Research, Bangladesh (ICDDR,B), Dhaka, Bangladesh, **4** Department of Biology and Chemistry, Fitchburg State University, Fitchburg, Massachusetts, United States of America, **5** Hospital for Tropical Diseases, Wellcome Trust Major Overseas Programme, Oxford University Clinical Research Unit, Ho Chi Minh City, Vietnam, **6** Oxford University Clinical Research Unit, Patan Academy of Health Sciences, Kathmandu, Nepal, **7** Department of Microbiology and Immunobiology, Harvard Medical School, Boston, Massachusetts, United States of America, **8** Centre for Tropical Medicine and Nuffield Department of Clinical Medicine, Oxford University, Oxford, United Kingdom, **9** Center for Microbial Interface Biology, The Ohio State University, Columbus, Ohio, United States of America, **10** The London School of Hygiene and Tropical Medicine, London, United Kingdom, **11** Department of Immunology and Infectious Diseases, Harvard School of Public Health, Boston, Massachusetts, United States of America

Abstract

Background: *Salmonella enterica* serotype Typhi can colonize and persist in the biliary tract of infected individuals, resulting in a state of asymptomatic chronic carriage. Chronic carriers may act as persistent reservoirs of infection within a community and may introduce infection to susceptible individuals and new communities. Little is known about the interaction between the host and pathogen in the biliary tract of chronic carriers, and there is currently no reliable diagnostic assay to identify asymptomatic *S. Typhi* carriage.

Methodology/Principal Findings: To study host-pathogen interactions in the biliary tract during *S. Typhi* carriage, we applied an immunoscreening technique called *in vivo*-induced antigen technology (IVIAT), to identify potential biomarkers unique to carriers. IVIAT identifies humorally immunogenic bacterial antigens expressed uniquely in the *in vivo* environment, and we hypothesized that *S. Typhi* surviving in the biliary tract of humans may express a distinct antigenic profile. Thirteen *S. Typhi* antigens that were immunoreactive in carriers, but not in healthy individuals from a typhoid endemic area, were identified. The identified antigens included a number of putative membrane proteins, lipoproteins, and hemolysin-related proteins. YncE (STY1479), an uncharacterized protein with an ATP-binding motif, gave prominent responses in our screen. The response to YncE in patients whose biliary tract contained *S. Typhi* was compared to responses in patients whose biliary tract did not contain *S. Typhi*, patients with acute typhoid fever, and healthy controls residing in a typhoid endemic area. Seven of 10 (70%) chronic carriers, 0 of 8 bile culture-negative controls (0%), 0 of 8 healthy Bangladeshis (0%), and 1 of 8 (12.5%) Bangladeshis with acute typhoid fever had detectable anti-YncE IgG in blood. IgA responses were also present.

Conclusions/Significance: Further evaluation of YncE and other antigens identified by IVIAT could lead to the development of improved diagnostic assays to identify asymptomatic *S. Typhi* carriers.

Citation: Charles RC, Sultana T, Alam MM, Yu Y, Wu-Freeman Y, et al. (2013) Identification of Immunogenic *Salmonella enterica* Serotype Typhi Antigens Expressed in Chronic Biliary Carriers of *S. Typhi* in Kathmandu, Nepal. PLoS Negl Trop Dis 7(8): e2335. doi:10.1371/journal.pntd.0002335

Editor: Joseph M. Vinetz, University of California San Diego School of Medicine, United States of America

Received: March 6, 2013; **Accepted:** June 12, 2013; **Published:** August 1, 2013

Copyright: © 2013 Charles et al. This is an open-access article distributed under the terms of the Creative Commons Attribution License, which permits unrestricted use, distribution, and reproduction in any medium, provided the original author and source are credited.

Funding: This work was supported by the ICDDR,B and grants from the Wellcome Trust of the United Kingdom (TVTN, SD, BB, JF, SB) and the National Institutes of Health, including the National Institute of Allergy and Infectious Diseases (AI100023 and AI077883 [ETR, FQ], AI058935 [SBC, ETR and FQ]), Training Grant in Vaccine Development and Public Health (D43 TW005572 [MMA, FK, TS, ETR, FQ]), Career Development Awards (K01 TW07409 [JBH], K01 TW07144 [RCL], K08 AI089721 [RCC], K08 AI100923 [DTL]), an American Recovery and Reinvestment Act (ARRA) Post-doctoral Fellowship in Global Infectious Diseases (TW005572 [DTL, RCC]), a Clinical Research Scholars Award (R24 TW007988 [SBC]) from the Fogarty International Center, a Physician Scientist Early Career Award from the Howard Hughes Medical Institute (RCL), a Massachusetts General Hospital Physician Scientist Development Award from Massachusetts General Hospital (RCC), a Burroughs Wellcome Fund/American Society of Tropical Medicine and Hygiene Postdoctoral Fellowship in Tropical Infectious Diseases (DTL), and an ISURF Award from the Harvard Global Health Institute (LLT). The funders had no role in study design, data collection and analysis, decision to publish, or preparation of the manuscript.

Competing Interests: The authors have declared that no competing interests exist.

* E-mail: rccharles@partners.org

¶ FQ, SB, and ETR are co-senior authors who contributed equally to this work.

Author Summary

Salmonella enterica serotype Typhi is the cause of typhoid fever and infects over 21 million individuals and causes 200,000 deaths each year. With adequate treatment, most patients recover from their acute stage of illness and clear infection. However, a small percentage of *S. Typhi* infected individuals develop a chronic but asymptomatic infection in the biliary tract that can persist for decades. Since *S. Typhi* is a human-restricted pathogen, chronic carriers may act as reservoirs of infection. Correctly identifying and treating asymptomatic chronic carriers could be critical for ultimate control of typhoid fever. Using an immunoscreening technique called *in vivo*-induced antigen technology (IVIAT), we have identified potential biomarkers unique to *S. Typhi* chronic carriers. Further evaluation of these antigens could lead to the development of improved diagnostic assays to detect asymptomatic *S. Typhi* carriers in typhoid endemic zones, and to an improved understanding of the pathogenesis of *S. Typhi* in the chronic carrier state.

Introduction

Salmonella enterica serovars Typhi (*S. Typhi*) and Paratyphi A (*S. Paratyphi A*) are human-specific pathogens, and the predominant cause of enteric (typhoid) fever globally. Enteric fever affects over 21 million people each year, resulting in 200,000 deaths [1]. Infection with *S. Typhi* and *S. Paratyphi A* usually begins with ingestion of contaminated water or food. The pathogens invade the gastrointestinal mucosa, translocate to the lymphoid follicles where they survive and replicate within macrophages, and then disseminate via the bloodstream to the liver, spleen, intestinal lymph nodes, bone marrow, and gallbladder [2]. With adequate treatment, most patients recover from their acute stage of illness and clear infection. However, a small percentage of *S. Typhi* (and *S. Paratyphi A*) infected individuals develop a chronic, but apparently asymptomatic, infection in the biliary tract that can persist for decades [3–6]. The likelihood of this is not known, but it is estimated that chronic carriage can complicate perhaps 1–3% of acute infections [7].

Since *S. Typhi* and *S. Paratyphi A* are human-restricted pathogens, chronic carriers may act as reservoirs of infection within a community. They contribute to the transmission cycle through the intermittent shedding of bacteria in feces (especially in areas of low transmission [8]) and may act as vehicles for introducing *S. Typhi* and *S. Paratyphi A* into previously uninfected communities. Therefore, correctly identifying and treating asymptomatic chronic carriers is critical for the long-term control of enteric fever. Currently, there is no reliable diagnostic assay to identify asymptomatic *S. Typhi* and *S. Paratyphi A* carriage. Bacterial stool culture has been used, yet is challenging due to the expense and logistics of obtaining multiple samples from patients, since shedding is typically low level and intermittent [5]. Measurement of antibody responses to the *S. Typhi* capsular Vi antigen has been previously described as a potential method to detect chronic *S. Typhi* carriers [7]. In laboratory settings, IgG to the Vi antigen has been shown to have a sensitivity of 75% and specificity of >95% and has proven to complement other strategies in outbreak investigations [7,9–11]. However, its role in detecting asymptomatic carriers in a general endemic-zone population is unclear. In Chile, anti-Vi antibody responses had a sensitivity of 75% and specificity of 92%–97% for *S. Typhi* carriage; however, due to a low prevalence rate of carriage in the general population, its positive predictive value was only 8–17%

[12]. In Vietnam, a large community-based survey for anti-Vi antibodies demonstrated a 3% positivity rate in the population; however, *S. Typhi* was never detected in the stool of individuals identified by such anti-Vi screening [13].

Understanding the mechanisms involved in development and persistence of the carrier state may facilitate development of improved diagnostic assays and therapeutic approaches for *S. Typhi* carriage. Currently, little is known about host-pathogen interactions in the biliary tract of chronic human carriers. Much of what is known about biliary carriage has been extrapolated from *in vitro* and murine studies with *S. Typhimurium*, which causes an enteric fever-like illness in mice [5]. From these animal studies and a complementary study in humans, we know that gallstones facilitate *S. Typhi* carriage [5]. In the presence of bile, the bacterium regulates the expression of genes that allow it to colonize and persist in the gallbladder through formation of biofilms that mediate resistance against host defenses [14,15]. There are likely other niches of persistent infection outside of the gallbladder, including the biliary tree, liver, and mesenteric lymph nodes. This is suggested by the observation that although cholecystectomy increases cure rates, it does not always result in clearance of the pathogen in humans [16]. In a murine model of *Salmonella* chronic infection, *S. Typhimurium* infection in *Slc11a1* (*Nramp1*) wild-type mice demonstrated that the most common site of persistent infection was in hemophagocytic macrophages within mesenteric lymph nodes [2,17,18].

To advance our understanding of *Salmonella* pathogenesis of the chronic carrier state, and identify potential biomarkers unique to *S. Typhi* chronic carriers, we applied an immunoscreening technique called *in vivo*-induced antigen technology (IVIAT) [19–21]. IVIAT identifies humorally immunogenic bacterial antigens expressed *in vivo* and not in bacteria grown in standard laboratory conditions. We hypothesized that *S. Typhi* surviving in the biliary tract of humans may express a proteomic profile distinct from that expressed in bacteria grown using standard *in vitro* conditions or during acute infection.

Methods

Ethics statement

This study was approved by the human studies committees of the involved research institutions: Massachusetts General Hospital, International Centre of Diarrheal Disease Research, Bangladesh (icddr,b), Patan Hospital, The Nepal Health Research Council, and the Oxford Tropical Research Ethics Committee. The study was conducted according to the principles expressed in the Declaration of Helsinki/Belmont Report, and informed written consent was obtained from adult participants and from guardians of children prior to study participation.

Bacterial strains, plasmids, and media

Salmonella enterica serotype Typhi strain CT18 [22] was obtained from the *Salmonella* Genetic Stock Centre (Calgary, Alberta, Canada). Genomic DNA from this strain was used to construct a genomic inducible expression library in host strain *Escherichia coli* strain BL21(DE3). Bacterial strains were grown in Luria-Bertani (LB) media (with 50 µg/ml kanamycin for clones containing pET30 constructs) and maintained at –80°C in LB broth containing 15% glycerol.

Patient and control sera

Individuals undergoing elective cholecystectomy in Kathmandu, Nepal were enrolled. At the time of cholecystectomy, a venous blood sample was stored and a bile sample was taken for

microbiologic analysis as previously described [6]. Patients were categorized as (1) *S. Typhi* carriers if their bile culture was positive for *S. Typhi*; (2) *S. Paratyphi A* carriers if their bile culture was positive for *S. Paratyphi A*, or (3) cholecystectomy controls if their bile cultures were negative for any organism. Sera samples were also obtained from the following groups: (1) healthy Bangladeshi residents of Dhaka (a typhoid endemic area) enrolled at the International Centre for Diarrhoeal Disease Research, Bangladesh (icddr,b); and (2) acute (day 0–3) and convalescent sera (day 14–28) of Bangladeshi patients who presented to icddr,b with *S. Typhi* bacteremia [23–25].

Construction of genomic inducible expression library

Genomic DNA was purified from *S. Typhi* strain CT18 using a Genomic DNA Isolation kit (Qiagen, Valencia, Ca), sheared using a Covaris sonicator (Woburn, Ma) optimized to generate 0.5–1.5 kb DNA fragments, and resulting fragments were gel purified using the Qiagen Qiaquick Gel Extraction kit. After terminal overhangs were removed using End-It DNA end-repair kit (Epicenter Biotechnologies, Madison, WI), the blunt-end products were ligated into pET-30c vectors (Novagen, San Diego, CA) that had been digested with *EcoRV* and treated with calf intestinal alkaline phosphatase. The library was electroporated into *E. coli* DH5 α and bacteria were plated onto selective LB media containing kanamycin. After overnight incubation at 37°C, the plates were scraped and the plasmid DNA from collected colonies was recovered using Qiagen Miniprep kit. *EcoRI* and *KpnI* digestion was performed on a random sample of plasmids, and an insertion frequency greater than 80% and insert size between 500 to 1500 bp was verified. The plasmid DNA mixture was electroporated into *E. coli* BL21 (DE3), and collected colonies were stored in LB broth containing 15% glycerol.

Screening for antigens uniquely expressed *in vivo* in *S. Typhi* carriers

Convalescent sera of 5 patients with bile cultures positive for *S. Typhi* were pooled, and adsorbed with *in vitro* grown *S. Typhi* strain CT18 and *E. coli* BL21 (DE3) [19]. Immunoblot techniques were used as previously described [19]. Briefly, the genomic library was plated on LB plates containing kanamycin to obtain a colony density of approximately 500 to 1000 clones per plate. After overnight incubation at 37°C, the resultant colonies were lifted off the plate using nitrocellulose membranes, and then the membranes were placed on LB media containing kanamycin and 1 mM isopropyl- β -D-thiogalactopyranoside for 4 hours at 37°C to induce transcription of insert DNA. Membranes were exposed to chloroform-soaked blotting paper to lyse bacteria, blocked for 1 hr using 5% milk in PBS with 0.25% Tween-20 (PBS/Tween), washed five times in PBS/Tween, and then incubated overnight with adsorbed sera at 1:10,000 dilution. After membranes were washed 3 times with PBS/Tween, immunoreactive clones were detected using anti-human IgG conjugated to horseradish peroxidase (MP Biomedicals/Cappel, Aurora, OH) at a 1:20,000 dilution, and immunoblots were developed with an enhanced chemiluminescence (ECL) kit (Amersham, Piscataway, NJ). Reactive clones were recovered from the master plates and saved as frozen glycerol stocks.

To confirm immunoreactive clones, secondary screening was performed comparing IgG immunoreactivity of the clones against *E. coli* BL21DE3 with an empty pET30c vector. Inserts of confirmed clones were sequenced to identify gene insert. Constructs designed to express the full length native protein were generated by amplifying the entire ORF of identified genes by PCR, and cloning these amplicons into pET30c as *NdeI* and *NotI*

inserts. Immunoreactivity of these full ORF clones was compared to *E. coli* BL21DE3 with an empty pET30c vector. To assess immunoreactivity of identified antigens among the pertinent general population, immunoreactive clones were also screened using pooled sera of individuals living in a typhoid endemic area (Bangladesh). These sera were pre-adsorbed against *in vitro* grown *E. coli* BL21DE3, as described above, to reduce background reactivity against the host strain.

Functional classifications of identified proteins were assigned using published articles and available protein information resources, including J. Craig Venter Institute annotations (<http://cmr.jcvi.org/tigr-scripts/CMR/CmrHomePage.cgi>) and Pfam 26.0 (<http://pfam.sanger.ac.uk/>).

Purification of YncE

YncE (STY1479) was PCR-amplified from *S. Typhi* strain CT18 and the product was cloned into Gateway vector pDONR221 using BP reaction kit according to manufacturer's instructions (Invitrogen). The full length sequence was verified and transferred from pDONR221 into the Gateway expression vector pDEST17 using LR reaction kit (Invitrogen) generating pDEST17His₆-yncE. The reaction product was transformed first into *E. coli* DH5 α , and then the recovered plasmid was transformed into the expression strain BL21AI. To overproduce His₆-YncE, *E. coli* BL21AI (pDEST17His₆-yncE) was grown in 250 mL LB broth containing ampicillin at 37°C until OD₆₀₀ 0.6, and then expression of his₆-yncE was induced by the addition of L(+) arabinose (0.2%). After 4 hours, the pellet was harvested by centrifugation, and the cells were lysed by sonication after resuspension in 15 mL lysis buffer (50 mM Tris HCl, 5% glycerol, 0.1 M NaCl pH 8) containing 100 ug/ml lysozyme. Following centrifugation, the pellet was washed in lysis buffer with and without 1% Triton X-100, and the pellet was resuspended in 10 mL of 8 M urea, 50 mM NaH₂PO₄ and 300 mM NaCl (pH 7.4). His₆-YncE was purified by HisPur Cobalt Resin (ThermoScientific, Rockford, Il) under denaturing conditions per the manufacturer's instructions. His₆-YncE was then refolded by dialysis into 25 mM Tris-HCL 0.15 M NaCl, pH 8.0 using decreasing concentrations of urea. Product purity was assessed by polyacrylamide gel electrophoresis and Coomassie staining, and product identity was assessed by Mass spectrometry analysis. Protein concentration was determined via Coomassie (Bradford) Protein Assay Kit (ThermoScientific, Rockford, Il).

Evaluation of serum IgG and IgA responses to YncE and *S. Typhi* capsular Vi antigen

To further characterize immunoreactivity of the antigen with the most prominent immunoreactivity in our initial screening, anti-YncE (STY1479) IgG and IgA responses were measured in the sera of 10 *S. Typhi* carriers, 3 *S. Paratyphi A* carriers, 8 patients at acute (day 0–3) and convalescent phase (day 14–28) of typhoid fever with confirmed *S. Typhi* bacteremia, 8 Nepalese controls undergoing elective cholecystectomy with negative bile cultures, and 8 healthy Bangladeshis, in duplicate. Plates were coated with 100 ng/well of YncE and then sera were added at a 1:200 dilution. Bound antibody was detected with anti-human IgG or IgA conjugated with horseradish peroxidase (Jackson Laboratories, Bar Harbor, ME) at a 1:1000 dilution, and peroxidase activity was measured with the substrate 2,2-azinois (ethyl-benzthiazolinesulfonic acid). To compare across plates, kinetic readings (mAb/sec) of samples were averaged, divided by kinetic readings (mAb/sec) of an in-house pooled standard (pooled sera of five *S. Typhi* carriers confirmed by biliary culture), and then

multiplied by 100. Results were expressed as units (U). The Mann-Whitney U test was used to compare differences between groups.

For evaluation of anti-Vi IgG and IgA responses, ELISA plates were coated with 200 ng/well of Vi antigen (Sanofi Pasteur, Lyon, France). The above sera were applied at a 1:100 dilution, and bound antibody was detected with anti-human IgG and IgA conjugated with horseradish peroxidase at a 1:1000 dilution. Peroxidase activity was measured with the substrate 2,2-azino-bis (ethylbenzthiazolinesulfonic acid). To compare anti-Vi responses across plates, duplicate kinetic readings of samples were averaged, divided by average kinetic readings of an in-house pooled standard, and then multiplied by 100, as described above. Results were expressed as units (U). Differences between groups were assessed using the Mann-Whitney U test.

Results

S. Typhi antigens identified by IVIAT

In the primary screen of over 120,000 clones, 565 clones were identified as immunogenic; 210 were confirmed by secondary screening. Sequence analysis of these inserts (many of which carried multiple potentially expressible ORFs) revealed 268 genes of interest with over 20% of genes identified multiple times, supporting validity of their identification and saturation of library screening. We subsequently sub-cloned the full coding sequences of 235 genes into individual expression plasmids, and identified 56 proteins with prominent IgG immunoreactivity using *S. Typhi* carrier sera, comparing immunoreactivity of expression clones to a clone containing an empty vector (Supplementary Table S1). Forty-eight of the identified genes are encoded on the chromosome of *S. Typhi*, 5 are encoded on the drug resistance plasmid pHCM1, and 3 on cryptic plasmid pHCM2. The most highly represented functional groups included proteins of unknown function and those involved in transport and binding, synthesis or salvage of ribonucleotides, and energy metabolism.

To assess the degree of immunoreactivity of antigens identified by IVIAT within the pertinent endemic-zone population, we screened the 56 immunoreactive clones against pooled sera of individuals living in a *S. Typhi* endemic area (Bangladeshi residents of Dhaka) [26]. Of these 56 proteins, 13 proteins had

more prominent immunoreactivity when screened with sera of *S. Typhi* carriers compared to sera of healthy Bangladeshis. These 13 proteins included a number of putative membrane proteins, lipoproteins, and hemolysin-related proteins (Table 1). YncE, a possible ATP-binding protein, had the overall highest differential immunoreactivity compared to healthy endemic-zone control sera in our immunoblot assay.

Anti-YncE serum responses as a diagnostic biomarker for asymptomatic *S. Typhi* carriage

To further characterize whether the immunoreactivity to YncE in *S. Typhi* carriers was specific, we also evaluated the immunoreactivity to YncE using sera of 5 groups of individuals: (1) *S. Typhi* carriers, (2) patients at the acute and convalescent phase of typhoid fever, (3) *S. Paratyphi A* carriers, (4) individuals who underwent cholecystectomy in Nepal whose bile cultures were negative for any pathogen, and (5) healthy controls from a typhoid endemic area (Dhaka, Bangladesh). We found significantly higher IgG immunoreactivity to YncE in *S. Typhi* carriers compared to bile culture-negative patients ($p=0.0205$), healthy Bangladeshis ($p=0.0005$), and patients at the acute and convalescent phases of typhoid infection ($p=0.0044$ and $p=0.0266$, respectively); there was a trend toward statistical significance when compared to *S. Paratyphi A* carriers ($p=0.21$) (Figure 1A). Of the 10 *S. Typhi* carriers, 7 (70%) had an anti-YncE IgG response (Units >100). None of 8 bile culture negative controls (0%), 0 of 8 healthy Bangladeshis (0%), 0 of 3 *S. Paratyphi A* carriers (0%) and 1 of 8 (12.5%) Bangladeshis at the acute and convalescent phase of *S. Typhi* had an anti-YncE IgG response. Thus, in our small subset of patients, using a cut-off value of >100 Units (U), anti-YncE IgG had a sensitivity of 70%, and specificity of 100% when using endemic zone healthy individuals and cholecystectomy patients without detectable *S. Typhi* as controls. The specificity decreased to 95% if we included patients with acute typhoid fever.

Although, the values did not reach statistical significance, *S. Typhi* carriers also had a higher IgA immunoreactivity to YncE compared to our two control groups: bile culture-negative patients ($p=0.2370$) and healthy Bangladeshis ($p=0.2031$) (Figure 1B). There was no significant difference between the IgA immunoreactivity to YncE in *S. Typhi* carriers in comparison to patients

Table 1. Proteins identified by IVIAT with higher IgG immunoreactivity in *S. Typhi* carriers compared to healthy typhoid-endemic zone controls.

Locus	Gene	Function
STY0712	<i>corC</i>	Hemolysin-related protein
STY1364		Hypothetical periplasmic protein
STY1479	<i>yncE</i>	Possible ATP-binding protein
STY2155	<i>sirA</i>	Invasion response-regulator
STY2248	<i>pduG</i>	PduG protein
STY2386		Putative lipoprotein
STY2454	<i>yejE</i>	Putative binding-protein-dependent transporter
STY2657	<i>xapB</i>	Xanthosine permease
STY3709	<i>purH</i>	Phosphoribosylaminoimidazolecarboxamideformyltransferase and IMP cyclohydrolase (bifunctional enzyme)
HCM1.137	<i>repE</i>	Replication initiation protein
HCM1.213c		Putative transposase
HCM2.0043		Hypothetical protein
HCM2.0069c		Hypothetical protein

doi:10.1371/journal.pntd.0002335.t001

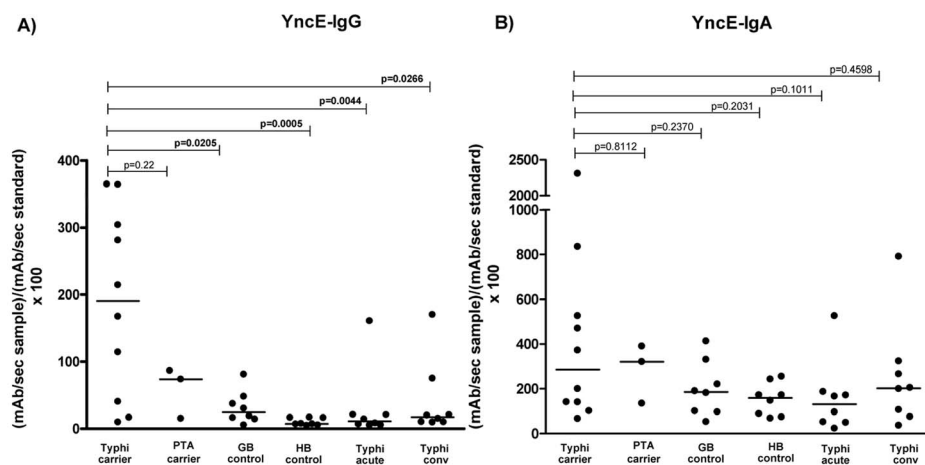


Figure 1. Characterization of anti- YncE immune responses. Anti-YncE IgG (A) and IgA (B) responses in *S. Typhi* carriers (Typhi carrier), *S. Paratyphi A* carriers (PTA carrier), Nepalese controls undergoing elective cholecystectomy with negative bile cultures (GB control), Healthy Bangladeshi controls (HB control), and patients at the day 0–3 acute (Typhi acute) and day 14–28 convalescent phase (Typhi conv) of typhoid fever with confirmed *S. Typhi* bacteremia. doi:10.1371/journal.pntd.0002335.g001

convalescing from acute typhoid infection or *S. Paratyphi A* carriers.

Comparison with anti-Vi serum responses

Since immune responses to *S. Typhi* Vi antigen have been the best characterized diagnostic method for identifying *S. Typhi* carriers to date, we also assessed the anti-Vi IgG and IgA responses in the same cohort of patients. We found significantly higher IgG immunoreactivity to Vi antigen in *S. Typhi* carriers compared to PTA carriers ($p = 0.0070$), bile culture negative controls ($p = 0.0343$), healthy Bangladeshis ($p = 0.0021$), and patients at the acute phase of typhoid infection ($p = 0.0155$). (Figure 2A). There was a trend toward statistical significance when the immunoreactivity of *S. Typhi* carriers to Vi antigen was compared to patients at the convalescent phase of typhoid

infection ($p = 0.0830$) (Figure 2A). In our evaluation of IgA anti-Vi responses, we did find a significant difference in the immunoreactivity of *S. Typhi* carriers compared to healthy Bangladeshis ($p = 0.0155$), and patients convalescing from acute typhoid infection ($p = 0.0266$) (Figure 2B). There was no significant difference in immune responses between *S. Typhi* carriers and bile-culture negative patients, *S. Paratyphi A* carriers, or patients at the acute phase of typhoid infection. The sensitivity for anti-Vi IgG and IgA was 40% (cutoff value >1250 U) and 50% (cutoff value >1250 U), respectively. The specificity was 100% for IgG irrespective of controls. For IgA, the specificity was 97% when using endemic zone healthy individuals and cholecystectomy patients without detectable *S. Typhi* as controls. The specificity was 94% if patients with acute typhoid fever were included in the analysis.

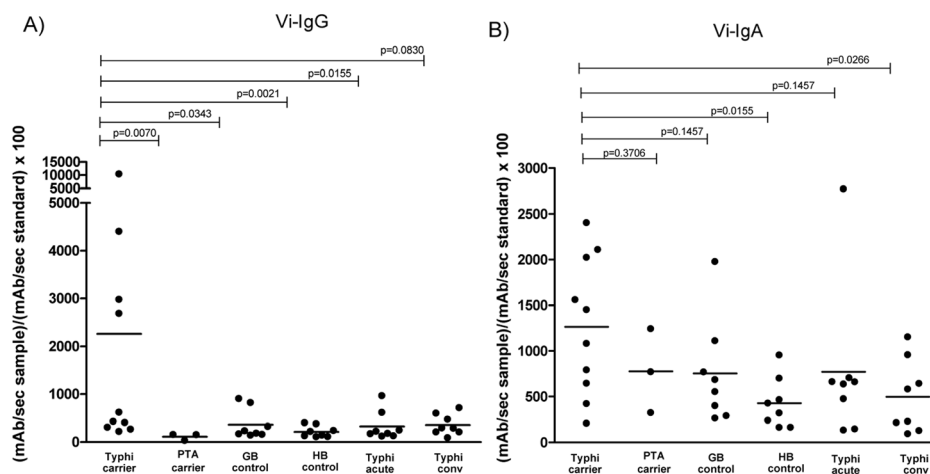


Figure 2. Characterization of anti- Vi immune responses. Anti- Vi antigen IgG (A) and IgA (B) responses were evaluated in *S. Typhi* carriers (Typhi carrier), *S. Paratyphi A* carriers (PTA carrier), Nepalese controls undergoing elective cholecystectomy with negative bile cultures (GB control), healthy Bangladeshi controls (HB control), and patients at the day 0–3 acute (Typhi acute) and day 14–28 convalescent phase (Typhi conv) of typhoid fever with confirmed *S. Typhi* bacteremia. doi:10.1371/journal.pntd.0002335.g002

Combined YncE and Vi antibody measurements for the detection of *S. Typhi* carriers

In our analysis, using a cut-off value of >100 U of anti-YncE IgG and/or >1250 U anti-Vi IgA, we could identify 8 out of 10 *S. Typhi* carriers. There was no added benefit seen when pairing anti-YncE responses with anti-Vi IgG.

Discussion

In our immunoscreen using IVIAT, we were able to identify 56 immunogenic *S. Typhi* proteins using the sera of *S. Typhi* carriers. Of these, 13 had higher immunoreactivity when screened with *S. Typhi* carrier sera compared to sera of endemic zone residents. These proteins represent a working list of candidate diagnostic biomarkers of asymptomatic *S. Typhi* carriage and their analysis may further our understanding of survival adaptations of *S. Typhi* in chronic carriers.

Human epidemiologic studies as well as murine models of *S. Typhi* carriage suggest that gallstones facilitate the development of the chronic carrier state [5]. In support of this, we identified SirA in our IVIAT screen, which is part of the two-component response regulator SirA-BarA [27]. In *S. Typhimurium*, this regulator plays a role in the down-regulation of genes involved in invasion (i.e. *Salmonella* Pathogenicity Island-1) when the bacterium is in the presence of bile [28], and mutations in *sirA* result in decreased biofilm formation on plastic surfaces [28]. The role SirA may play in human or murine *Salmonella* carriage, or why a cytoplasmic regulatory protein generated a humoral response, has yet to be characterized. Other proteins identified in the IVIAT screen may also affect carriage in the presence of gallstones.

Although *S. Typhi* may persist in the gallbladder in association with gallstones [3], *S. Typhi* likely has other niches of infection, including the gallbladder epithelium, biliary tree, and in macrophages of mesenteric lymph nodes [2,3,5,16–18]. Proteins identified in our screen may play a role in persistence of *S. Typhi* within host cells or the stringent environment of bile. For instance, YejE is a putative permease that is thought to be a component of a putative ABC transporter system. YejE plays a role in survival within epithelial cells and in antimicrobial peptide resistance [29]. In both *S. Typhi* and *S. Typhimurium*, *yjE* expression is upregulated inside host macrophages [30,31]. PduG is a protein encoded within the *pdu* operon that is part of the coenzyme B12-dependent 1,2-propranolol utilization pathway [32]. This operon is upregulated during acute *S. Typhi* and *S. Paratyphi A* infection in humans [24,33], and may be associated with use of alternative carbon sources in the nutrient-limited environment of the *Salmonella*-containing vacuole within host cells [32]. We also identified PurH and XapB, which are proteins involved in purine biosynthesis and acquisition, respectively, by functional classification. In *S. Typhimurium*, PurH is associated with virulence [34], and we have previously shown that genes involved in purine synthesis are upregulated during acute typhoid infection in humans [24]. CorC is a hemolysin-related protein involved in magnesium and cobalt efflux, and is part of the CorA transporter system containing CorA-D [35]. CorA, with associated proteins, is required for efflux of Mg²⁺ [35]. CorA is required for *S. Typhimurium* virulence [36], and *corA* is expressed by *S. Typhi* during acute human infection [24]. However, while some information is known regarding the above mentioned *Salmonella* carrier-specific antigens, their potential role in carriage is presently unclear.

The majority of the genes identified by IVIAT encode for proteins with putative or unknown function. For example, STY2386 is an uncharacterized lipoprotein found uniquely in

Salmonella. STY1364 is a hypothetical periplasmic protein in *S. Typhi* and *S. Paratyphi A*, and is rarely found in other *Salmonella* spp. STY1364 belongs to the structural classification of bacterial enterotoxins and is a subtilase cytotoxin subunit B-like protein. We previously identified STY1364 in *S. Typhi* infected patients using a separate immunoscreening technology (immunoaffinity proteomic-based technology, IPT) [23].

In our screening, YncE (STY1479) was the most immunoreactive antigen identified, and we thus focused our more detailed analysis of immunoreactivity on this antigen. YncE has a putative N-terminal signal sequence suggestive of export, with ATP and DNA-binding domains. *yncE* is present in a number of *Salmonella* spp., and has orthologs in a number of other Gram-negative enteric organisms, including *Escherichia coli*, *Citrobacter* spp, and *Shigella* spp. In *E. coli*, YncE is secreted into the periplasm via the Sec-dependent pathway [37], and its expression is induced under iron-restricted conditions when repression by the Fur protein is relieved [38]. Its role in the pathogenesis of *Salmonella* infection has yet to be characterized. However, our results suggest that it may be involved in long-term persistence of the bacterium in chronic carriers.

In our analysis, we show that *S. Typhi* carriers have an IgG response to YncE that is not present in bile culture-negative controls in Nepal or healthy controls in Bangladesh. Although we did not reach statistical significance in this small pilot study, a similar trend was seen for IgA as well. One patient convalescing from acute typhoid infection had a detectable IgG anti-YncE response, and another had an IgA response. This may suggest that anti-YncE responses occur during acute disease; however, it should be noted that we do not know the current or future carrier status of the acute typhoid patients, and an elevated level of YncE during an episode of typhoid fever may represent an acute on chronic infection, or may be a marker of future progression to the chronic carrier state.

All of the identified genes except three (*xapB* and the two genes encoded on the cryptic plasmid pHCM2) are present in the genome of *S. Paratyphi A* sequenced strains ATCC 9150 and AKU 12601 based on <60% nucleotide identity. It is interesting then, that we did not see an IgG or IgA immune response to YncE in *S. Paratyphi A* carriers. This finding may suggest that *S. Typhi* and *S. Paratyphi A* use different strategies to persist in chronic carriers, that expression of YncE may be distinct in these two organisms, or that our study did not have sufficient power to examine this, as it included only three *S. Paratyphi A* carriers.

Despite this, in our small cohort of patients, measurement of anti-YncE IgG responses did appear to be both relatively sensitive and specific for identifying asymptomatic chronic *S. Typhi* carriers. Further studies will be needed to evaluate the diagnostic capabilities of anti-YncE responses in a larger and different cohort of patients. Of note, if such studies demonstrate higher anti-YncE IgA levels in *S. Typhi* carriers than in control groups, that information could support consideration of a salivary diagnostic to facilitate community-based screening for carriage.

The other antigens identified in our IVIAT analysis may also be useful diagnostic biomarkers of *S. Typhi* carriage, and the sensitivity of carrier detection may be improved when responses against these or anti-Vi responses are paired with responses to YncE. For example, in our analysis, using a cut-off value of >100 U of anti YncE IgG and/or >1250 U anti-Vi IgA, we could identify 8 out 10 *S. Typhi* carriers. There was no added benefit seen when pairing anti-YncE responses with anti-Vi IgG. Another potential pairing could include a marker of biliary tract inflammation such as elevated bilirubin values, since *S. Typhi* carriage is often associated with chronic inflammation of the gallbladder [5]. We did not assess this parameter in this study.

Our study has a number of limitations. First, the number of patients involved in our study is small, although it should be noted that our analysis is the largest study involving immunoproteomic screening and pilot confirmation of the carriage state that includes appropriate control groups. A second limitation is that IVIAT identifies proteins that are uniquely expressed *in vivo* compared to standard *in vitro* culturing, and that also induce an antibody response. Proteins that induce cellular responses and/or that are expressed both *in vivo* and *in vitro* may also play a role in the pathogenesis of chronic carriage and serve as useful biomarkers for asymptomatic carriage. In addition, altering *in vitro* culturing conditions may also change the expression profile of *S. Typhi*, thereby changing the comparison groups. In addition, IVIAT does not identify non-protein antigens that may also be useful in diagnostic assays. However, despite these limitations, we have used IVIAT to identify a subset of immunoreactive antigens in *S. Typhi* carriers, including YncE. Further evaluation of YncE and other identified antigens could lead to the development of improved diagnostic assays to detect asymptomatic *S. Typhi* carriers in typhoid endemic zones, and analysis of YncE, along with other

identified antigens, could lead to an improved understanding of host-pathogen interactions during chronic carriage of *S. Typhi* in humans.

Supporting Information

Table S1 Proteins identified by IVIAT with higher IgG immunoreactivity in *S. Typhi* carriers compared to immunoreactivity to empty vector.

(XLS)

Author Contributions

Conceived and designed the experiments: RCC JBH RCL SBC FQ SB ETR. Performed the experiments: RCC TS MMA YY YW MKB SMR LT TVTN SD BB FK. Analyzed the data: RCC TS YY YW DTL WAB SBC JSG JBH RCL FQ SB ETR. Contributed reagents/materials/analysis tools: SBC ETR FQ FK WAB SB JF BB SD TVTN. Wrote the paper: RCC TS MMA YY YW MKB SMR LT JBH RCL DTL WAB TVTN SD BB SBC JF FK JSG FQ SB ETR.

References

- Crump JA, Luby SP, Mintz ED (2004) The global burden of typhoid fever. *Bull World Health Organ* 82: 346–353.
- Monack DM, Mueller A, Falkow S (2004) Persistent bacterial infections: the interface of the pathogen and the host immune system. *Nat Rev Microbiol* 2: 747–765.
- Gonzalez-Escobedo G, Marshall JM, Gunn JS (2011) Chronic and acute infection of the gall bladder by *Salmonella Typhi*: understanding the carrier state. *Nat Rev Microbiol* 9: 9–14.
- Levine MM, Black RE, Lanata C (1982) Precise estimation of the numbers of chronic carriers of *Salmonella typhi* in Santiago, Chile, an endemic area. *J Infect Dis* 146: 724–726.
- Crawford RW, Rosales-Reyes R, Ramirez-Aguilar Mde L, Chapa-Azuela O, Alpuche-Aranda C, et al (2010) Gallstones play a significant role in *Salmonella* spp. gallbladder colonization and carriage. *Proc Natl Acad Sci U S A* 107: 4353–4358.
- Dongol S, Thompson CN, Clare S, Nga TV, Duy PT, et al (2012) The microbiological and clinical characteristics of invasive *Salmonella* in gallbladders from cholecystectomy patients in Kathmandu, Nepal. *PLoS One* 7: e47342.
- Parry CM, Wijedoru L, Arjyal A, Baker S (2011) The utility of diagnostic tests for enteric fever in endemic locations. *Expert Rev Anti Infect Ther* 9: 711–725.
- Lynch MF, Blanton EM, Bulens S, Polyak C, Vojdani J, et al (2009) Typhoid fever in the United States, 1999–2006. *JAMA* 302: 859–865.
- Nolan CM, Feeley JC, White PC, Jr, Hambie EA, Brown SL, et al (1980) Evaluation of a new assay for Vi antibody in chronic carriers of *Salmonella typhi*. *J Clin Microbiol* 12: 22–26.
- Losonsky GA, Ferreccio C, Kotloff KL, Kaintuck S, Robbins JB, et al (1987) Development and evaluation of an enzyme-linked immunosorbent assay for serum Vi antibodies for detection of chronic *Salmonella typhi* carriers. *J Clin Microbiol* 25: 2266–2269.
- Nath G, Mauryal P, Gulati AK, Singh TB, Srivastava R, et al (2010) Comparison of Vi serology and nested PCR in diagnosis of chronic typhoid carriers in two different study populations in typhoid endemic area of India. *Southeast Asian J Trop Med Public Health* 41: 636–640.
- Lanata CF, Levine MM, Ristori C, Black RE, Jimenez L, et al (1983) Vi serology in detection of chronic *Salmonella typhi* carriers in an endemic area. *Lancet* 2: 441–443.
- Gupta A, My Thanh NT, Olsen SJ, Sivapalasingam S, My Trinh TT, et al (2006) Evaluation of community-based serologic screening for identification of chronic *Salmonella typhi* carriers in Vietnam. *Int J Infect Dis* 10: 309–314.
- Crawford RW, Gibson DL, Kay WW, Gunn JS (2008) Identification of a bile-induced exopolysaccharide required for *Salmonella* biofilm formation on gallstone surfaces. *Infect Immun* 76: 5341–5349.
- Prouty AM, Brodsky IE, Manos J, Belas R, Falkow S, et al (2004) Transcriptional regulation of *Salmonella enterica* serovar Typhimurium genes by bile. *FEMS Immunol Med Microbiol* 41: 177–185.
- Ristori C, Rodriguez H, Vicent P, Ferreccio C, Garcia J, et al (1982) Persistence of the *Salmonella typhi-paratyphi* carrier state after gallbladder removal. *Bull Pan Am Health Organ* 16: 361–366.
- Monack DM, Bouley DM, Falkow S (2004) *Salmonella typhimurium* persists within macrophages in the mesenteric lymph nodes of chronically infected Nramp1+/+ mice and can be reactivated by IFN γ neutralization. *J Exp Med* 199: 231–241.
- Nix RN, Altschuler SE, Henson PM, Detweiler CS (2007) Hemophagocytic macrophages harbor *Salmonella enterica* during persistent infection. *PLoS Pathog* 3: e193.
- Harris JB, Baresch-Bernal A, Rollins SM, Alam A, LaRocque RC, et al (2006) Identification of *in vivo*-induced bacterial protein antigens during human infection with *Salmonella enterica* serovar Typhi. *Infect Immun* 74: 5161–5168.
- Rollins SM, Peppercorn A, Young JS, Drysdale M, Baresch A, et al (2008) Application of *in vivo* induced antigen technology (IVIAT) to *Bacillus anthracis*. *PLoS One* 3: e1824.
- Hang L, John M, Asaduzzaman M, Bridges EA, Vanderspurt C, et al (2003) Use of *in vivo*-induced antigen technology (IVIAT) to identify genes uniquely expressed during human infection with *Vibrio cholera*. *Proc Natl Acad Sci U S A* 100: 8508–8513.
- Parkhill J, Dougan G, James KD, Thomson NR, Pickard D, et al (2001) Complete genome sequence of a multiple drug resistant *Salmonella enterica* serovar Typhi CT18. *Nature* 413: 848–852.
- Charles RC, Sheikh A, Krastins B, Harris JB, Bhuiyan MS, et al (2010) Characterization of anti-*Salmonella enterica* serotype Typhi antibody responses in bacteremic Bangladeshi patients by an immunofluorescence-based technology. *Clin Vaccine Immunol* 17: 1188–1195.
- Sheikh A, Charles RC, Sharmeen N, Rollins SM, Harris JB, et al (2011) *In vivo* expression of *Salmonella enterica* serotype Typhi genes in the blood of patients with typhoid fever in Bangladesh. *PLoS Negl Trop Dis* 5: e1419.
- Sheikh A, Bhuiyan MS, Khanam F, Chowdhury F, Saha A, et al (2009) *Salmonella enterica* serovar Typhi-specific immunoglobulin A antibody responses in plasma and antibody in lymphocyte supernatant specimens in Bangladeshi patients with suspected typhoid fever. *Clin Vaccine Immunol* 16: 1587–1594.
- Brooks WA, Hossain A, Goswami D, Nahar K, Alam K, et al (2005) Bacteremic typhoid fever in children in an urban slum, Bangladesh. *Emerg Infect Dis* 11: 326–329.
- Altier C, Suyemoto M, Ruiz AI, Burnham KD, Maurer R (2000) Characterization of two novel regulatory genes affecting *Salmonella* invasion gene expression. *Mol Microbiol* 35: 635–646.
- Prouty AM, Gunn JS (2000) *Salmonella enterica* serovar Typhimurium invasion is repressed in the presence of bile. *Infect Immun* 68: 6763–6769.
- Eswarappa SM, Panguluri KK, Hensel M, Chakravorty D (2008) The *yjxABEF* operon of *Salmonella* confers resistance to antimicrobial peptides and contributes to its virulence. *Microbiology* 154: 666–678.
- Eriksson S, Lucchini S, Thompson A, Rhen M, Hinton JC (2003) Unravelling the biology of macrophage infection by gene expression profiling of intracellular *Salmonella enterica*. *Mol Microbiol* 47: 103–118.
- Faucher SP, Porwollik S, Dozois CM, McClelland M, Daigle F (2006) Transcriptome of *Salmonella enterica* serovar Typhi within macrophages revealed through the selective capture of transcribed sequences. *Proc Natl Acad Sci U S A* 103: 1906–1911.
- Conner CP, Heithoff DM, Julio SM, Sinsheimer RL, Mahan MJ (1998) Differential patterns of acquired virulence genes distinguish *Salmonella* strains. *Proc Natl Acad Sci U S A* 95: 4641–4645.
- Sheikh A, Charles RC, Rollins SM, Harris JB, Bhuiyan MS, et al (2010) Analysis of *Salmonella enterica* serotype Paratyphi A gene expression in the blood of bacteremic patients in Bangladesh. *PLoS Negl Trop Dis* 4: e908.
- McFarland WC, Stocker BA (1987) Effect of different purine auxotrophic mutations on mouse-virulence of a Vi-positive strain of *Salmonella dublin* and of two strains of *Salmonella typhimurium*. *Microb Pathog* 3: 129–141.

35. Gibson MM, Bagga DA, Miller CG, Maguire ME (1991) Magnesium transport in *Salmonella typhimurium*: the influence of new mutations conferring Co²⁺ resistance on the CorA Mg²⁺ transport system. *Mol Microbiol* 5: 2753–2762.
36. Papp-Wallace KM, Nartea M, Kehres DG, Porwollik S, McClelland M, et al (2008) The CorA Mg²⁺ channel is required for the virulence of *Salmonella enterica* serovar Typhimurium. *J Bacteriol* 190: 6517–6523.
37. Baars L, Ytterberg AJ, Drew D, Wagner S, Thilo C, et al (2006) Defining the role of the *Escherichia coli* chaperone SecB using comparative proteomics. *J Biol Chem* 281: 10024–10034.
38. McHugh JP, Rodriguez-Quinones F, Abdul-Tehrani H, Svistunenko DA, Poole RK, et al (2003) Global iron-dependent gene regulation in *Escherichia coli*. A new mechanism for iron homeostasis. *J Biol Chem* 278: 29478–29486.