



DIGITAL ACCESS TO SCHOLARSHIP AT HARVARD

Using PM2.5 concentrations to estimate the health burden from solid fuel combustion, with application to Irish and Scottish homes

The Harvard community has made this article openly available. [Please share](#) how this access benefits you. Your story matters.

Citation	Galea, Karen S, J Fintan Hurley, Hilary Cowie, Amy L Shafrir, Araceli Sánchez Jiménez, Sean Semple, Jon G Ayres, and Marie Coggins. 2013. "Using PM2.5 concentrations to estimate the health burden from solid fuel combustion, with application to Irish and Scottish homes." <i>Environmental Health</i> 12 (1): 50. doi:10.1186/1476-069X-12-50. http://dx.doi.org/10.1186/1476-069X-12-50 .
Published Version	doi:10.1186/1476-069X-12-50
Accessed	April 17, 2018 4:36:20 PM EDT
Citable Link	http://nrs.harvard.edu/urn-3:HUL.InstRepos:11717547
Terms of Use	This article was downloaded from Harvard University's DASH repository, and is made available under the terms and conditions applicable to Other Posted Material, as set forth at http://nrs.harvard.edu/urn-3:HUL.InstRepos:dash.current.terms-of-use#LAA

(Article begins on next page)



RESEARCH

Open Access

Using PM_{2.5} concentrations to estimate the health burden from solid fuel combustion, with application to Irish and Scottish homes

Karen S Galea^{1*}, J Fintan Hurley², Hilary Cowie², Amy L Shafir^{2,3}, Araceli Sánchez Jiménez¹, Sean Semple⁴, Jon G Ayres⁵ and Marie Coggins⁶

Abstract

Background: This study estimates the potential population health burden from exposure to combustion-derived particulate air pollution in domestic settings in Ireland and Scotland.

Methods: The study focused on solid fuel combustion used for heating and the use of gas for cooking. PM_{2.5} (particulate matter with an aerodynamic diameter < 2.5 µm) was used as the pollutant mixture indicator. Measured PM_{2.5} concentrations in homes using solid fuels were adjusted for other sources of PM_{2.5} by subtracting PM_{2.5} concentrations in homes using gas for cooking but not solid fuel heating. Health burden was estimated for exposure indoors 6 pm - midnight, or all day (24-hour), by combining estimated attributable annual PM_{2.5} exposures with (i) selected epidemiological functions linking PM_{2.5} with mortality and morbidity (involving some re-scaling from PM₁₀ to PM_{2.5}, and adjustments 'translating' from concentrations to exposures) and (ii) on the current population exposed and background rates of morbidity and mortality.

Results: PM_{2.5} concentrations in coal and wood burning homes were similar to homes using gas for cooking, used here as a baseline (mean 24-hr PM_{2.5} concentrations 8.6 µg/m³) and so health impacts were not calculated. Concentrations of PM_{2.5} in homes using peat were higher (24-hr mean 15.6 µg/m³); however, health impacts were calculated for the exposed population in Ireland only; the proportion exposed in Scotland was very small. The assessment for winter evening exposure (estimated annual average increase of 2.11 µg/m³ over baseline) estimated 21 additional annual cases of all-cause mortality, 55 of chronic bronchitis, and 30,100 and 38,000 annual lower respiratory symptom days (including cough) and restricted activity days respectively.

Conclusion: New methods for estimating the potential health burden of combustion-generated pollution from solid fuels in Irish and Scottish homes are provided. The methodology involves several approximations and uncertainties but is consistent with a wider movement towards quantifying risks in PM_{2.5} irrespective of source. Results show an effect of indoor smoke from using peat (but not wood or coal) for heating and cooking; but they do not suggest that this is a major public health issue.

Keywords: Health burden assessment, Solid fuels, Peat, Scotland, Ireland, PM_{2.5}

* Correspondence: karen.galea@iom-world.org

¹Centre for Human Exposure Science, Institute of Occupational Medicine (IOM), Edinburgh, UK

Full list of author information is available at the end of the article

Background

Electricity and gas are the main fuels used for heating and cooking in Ireland (throughout this paper, 'Ireland' and 'Irish' refer to the Republic of Ireland unless otherwise stated) and Scotland. In both countries however some homes still use solid fuel (coal, wood, and peat) as residential energy sources. These contribute to both indoor and outdoor air pollution and the health consequences of this are largely unexplored. The need to understand these consequences is increased because use of solid fuels is likely to change, influenced by policies to reduce Greenhouse Gas emissions which support greater use of renewable or biomass fuels like wood and reduced use of fossil fuels like coal. Peat has been considered a fossil fuel but its status as fossil or renewable fuel is unclear [1].

The Indoor Air Pollution and Health (IAPAH) project [2] aimed to quantify the levels of indoor air pollution (IAP) in Irish and Scottish homes using different types of combustion fuels (coal, wood and peat for heating and gas for cooking) and to estimate the health impacts of exposure to IAP generated from the combustion of these fuels; it also considered exposure to Environmental Tobacco Smoke (ETS) in homes. This manuscript reports work within IAPAH with the aim of estimating the population health burden from IAP exposure attributable to solid fuel use as a primary source of heating, and to using gas for cooking in domestic settings in Ireland and Scotland.

Scientific methods for estimating the health burden attributable to air pollution, and Health Impact Assessment (HIA) of pollution changes, have mainly focused on outdoor air pollution. There is no corresponding established methodology for HIA of indoor air pollution from indoor sources. In 2007, the Scientific Committee on Health and Environmental Risks [3] identified gaps in the scientific knowledge needed for a health-based risk assessment strategy on Indoor Air Quality (IAQ). Many of the gaps relate to the lack of specific information on source pollutant concentrations, exposure patterns and health effects of specific indoor air pollutants; IAPAH was designed to address these issues, with application to Ireland and Scotland.

There was limited directly relevant existing information. Much work has been published on indoor air pollutants and the burning of solid or biomass fuels for heating and cooking in developing countries [4,5] but data from such studies cannot be extrapolated reliably to more economically developed settings because of major differences in housing, ventilation, heating and cooking appliances, and fuels used. Some studies have investigated how the use of solid fuels for cooking or heating in the home contributes to IAP in developed countries, in homes that use wood [6-8], gas [9], coal [10,11] or

peat [12], but available information is limited. As described elsewhere [13] and summarised below, the IAPAH study itself therefore included new measurements in Irish and Scottish homes, of which the data collected from 100 homes were used for analysis.

Air pollutants found in the indoor environment can play a significant role in human health. This is unsurprising, in that data from the USA and the EU indicate a significant proportion of our time is spent indoors [14], and vulnerable groups such as young children and the elderly can spend up to 100% of their time indoors [15]. Under conditions of very high exposures compared with Ireland and Scotland [4,5,13], exposure to IAP from solid fuel combustion has been linked to the development or exacerbation of chronic respiratory illnesses such as asthma, allergies and chronic obstructive pulmonary disease (COPD), and cardiovascular disease [4,5]. Ireland's mortality rate from respiratory disease is over twice the EU average [16], while both Ireland and the United Kingdom have a particularly high prevalence of childhood allergy and asthma [17]. While it would be wrong to presume that IAP was a major cause of these differences, it is important to understand what role IAP may play.

To do this we developed and used a methodology based on assuming that, for policy purposes, the risks to health from IAP can be approximated by adapting concentration-response functions from outdoor air pollution, in the metric of $PM_{2.5}$. One focus of the paper is to describe and discuss the strengths and weaknesses of this strategy; a second is to describe and discuss the substantive results because we think these are sufficiently reliable, at least qualitatively, to inform the development of policy. Methods and results are described in more detail in a series of longer reports [2].

Within IAPAH, the health burden attributable to ETS exposure has been estimated using both a method based on $PM_{2.5}$ (pollutant-based approach) and another, source-based, approach, based on whether or not there is exposure to ETS in the home. As we discuss in this manuscript, we think that a source-based approach to health burden from IAP attributable to solid fuel use is not viable, and so a different approach, such as we adopted with $PM_{2.5}$, is necessary if estimates are to be made.

Methods

The pollutant based approach to estimating health burden

Working jointly with the EU HEIMTSA project (<http://www.heimtsa.eu>), the 'full chain' approach to environmental HIA (<http://www.integrated-assessment.eu/>), developed and promoted by EU-funded projects such as ExterneE (http://www.externe.info/externe_d7/), HEIMTSA and INTARESE (<http://www.intarese.org>), was adapted for application to IAP from combustion. This approach tracks the fate of pollutants from their source, through

environments which allow for human exposure, to their specific health impacts. This requires considering as an integrated whole, the entire chain or pathway from pollution source through to health outcome, and managing the transitions between steps of the pathway; e.g. the exposure metric used for estimating exposures must be the same as the exposure metric used for estimating exposure-related risks to health.

The pollutant-based approach takes one or more signature pollutants as a marker of the entire combustion mixture from the source of interest. In line with HIA of outdoor air pollution, PM_{2.5} (particulate matter with an aerodynamic diameter of less than 2.5 µm) was used as the index of combustion mixtures for indoor sources.

This strategy then proceeds to an assessment of health burden by combining information about (i) the relevant population exposed to IAP from combustion sources indoors; (ii) concentrations of relevant pollutants (i.e. PM_{2.5}) within homes with combustion sources of pollution [13]; (iii) the risk to health of exposure indoors to those levels of PM_{2.5} and (iv) background rates of morbidity and mortality in the exposed population. To allow the assessment of health burden to be undertaken, information from multiple sources was required to provide the data required to populate each of the variables as described in Figure 1.

Population exposure to solid fuel combustion / using gas for cooking

Total population data of Ireland for 2010 were obtained from the Eurostat statistics database [18]. The data file provided population figures by one year age group, sex and country. The total population of Ireland in 2010 was 4,467,854 (2,216,444 male, 2,251,410 female).

Total population estimates were obtained for Scotland for 2010 (mid-year estimates) from the General Register Office for Scotland. These estimates were also provided by sex and one-year age groups [19]. The total population of Scotland in 2010 was 5,222,100 (2,530,315 men and 2,691,785 females).

Information on the number of households using solid fuel in Ireland and Scotland is very limited. Most of the documents reviewed, e.g. [20,21] contained published general figures on solid fuel usage in reference to the total energy consumption, not on the number of households using specific solid fuels or the characteristics of those who use solid fuels. For a full list of sources consulted see [22].

Relevant information for Ireland was identified in the Irish Household Budget Survey (HBS) (most recent report available for our study, dated 2004/2005) [23], which is a survey of a representative random sample of all private households in Ireland. Data from this survey were analysed and summarised, giving detailed information on household population and the fuel used for

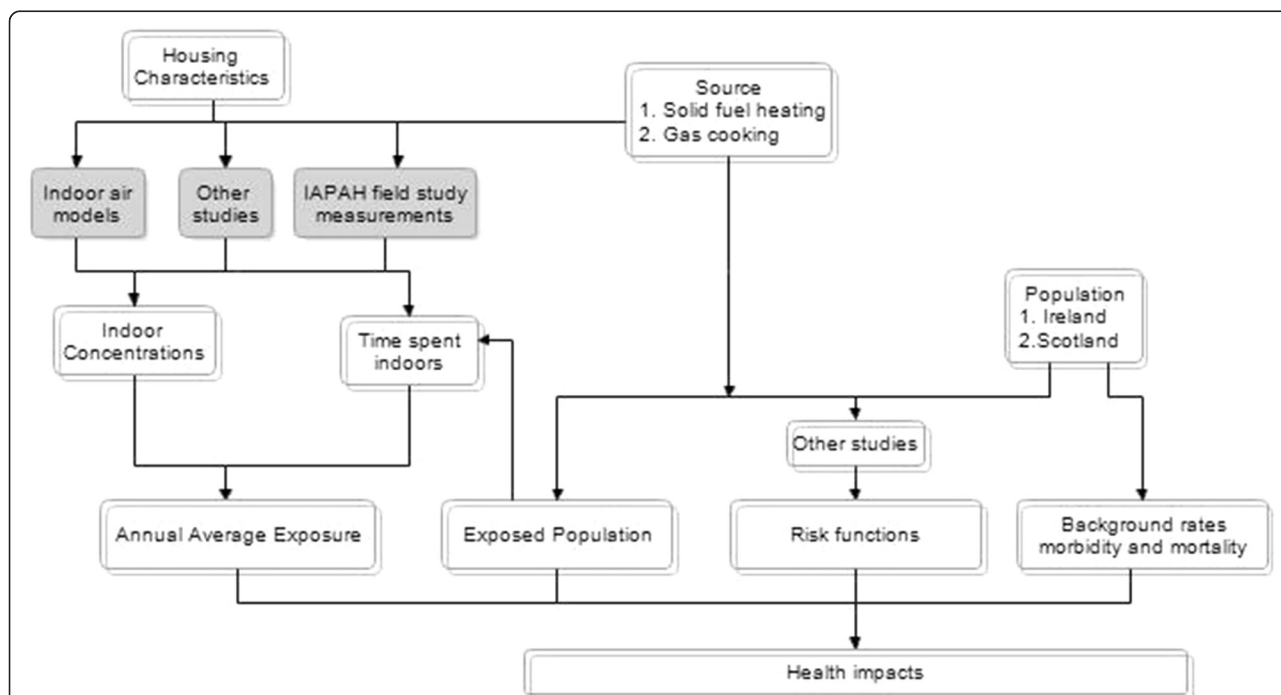


Figure 1 Application of the pollutant-based approach within IAPAH (grey boxes are unique to the IAPAH study). Note: Indoor concentrations is the additional increment in concentrations due to using peat for heating, over and above the baseline of homes using gas for cooking but no solid fuel.

heating and cooking, classified as gas, electric, oil and solid fuel, but not by type of solid fuel (coal, peat and wood). Data from Sustainable Energy Ireland [20] showed that the total residential energy used for coal (7.1%) and peat (9.3%) was similar as a percentage of all sources classified; a percentage for wood was not given; we assumed it was small compared to the use of coal as shown by the results on household income expenditure [23]. On that basis we assumed that the population using peat was approximately half of the population that used solid fuel, i.e. the same as coal and wood together [22].

In Scotland information on the number of households that use solid fuel for heating and cooking, and associated population characteristics, was obtained from the Scottish House Condition Surveys (SHCS) completed in 2005/06, 2007 and 2008. These surveys included approximately 3000 households per survey. Estimates of the percentage of the population living in households burning solid fuel for heating, or using gas for cooking, were calculated by the SHCS team (David McLaren, SHCS statistician, 2010; personal communication). Percentages on the population using solid fuel for heating and cooking were extracted directly from the survey and weighed for the total population. This included an estimate that <0.5% of the population in Scotland used peat for heating and cooking.

Annual average PM_{2.5} concentrations

In order to estimate annual burden of disease attributable to the indoor combustion sources of interest, it was necessary to estimate annual average exposures to PM_{2.5} indoors, attributable to these combustion sources. This involved several linked stages.

Estimates of annual average concentrations were derived from a limited programme of measurements of indoor air pollution in homes in Ireland and Scotland from the IAPAH field study [13]. These included real-time measurements of PM_{2.5} over one approximately 24-hr period in each participating home; these were time-weighted to give a 24-hr value for each home.

For each source of interest, i.e. coal, wood and peat for heating and gas for cooking, it was intended to sample

10 homes in each of Scotland and Ireland that used that source only. In practice (Table 1) there was some variation in numbers achieved. Also, about 30% of the solid fuel homes sampled used solid fuels as secondary, rather than a primary heating fuel, but there were no statistically significant differences in concentrations between the primary and secondary heating homes and so all were retained in the analysis [22].

We were unable to obtain specific data on when the population as a whole was likely to be at home and exposed. Instead we considered two scenarios, one at home and exposed during evenings only (6pm until midnight) and the other, at home and exposed full-time, i.e. 24-hours. The available measurements were used to give estimates of average indoor concentrations of PM_{2.5} in non-smoking homes using various kinds of solid fuel for heating or using gas for cooking, for evenings and all day [13].

Next, in order to estimate PM_{2.5} attributable to solid fuel use, or gas for cooking, it was necessary to adjust these average concentrations of PM_{2.5} indoors for the effect of other sources, i.e. penetration indoors of outdoor air pollution, and all other indoor sources. Given that no measurements were available from an ideal control (i.e. electricity for cooking, no solid fuel combustion sources for heating and no ETS), several approaches to adjustment were considered, including estimation of both outdoor PM_{2.5} and indoor penetration [22]. The approach eventually adopted drew on a literature review of using gas for cooking, and of other indoor sources. The results suggested that the contribution to indoor PM_{2.5} mass concentrations from using gas for cooking was negligible over the 6- or 24-hr periods relevant to this study; i.e. PM_{2.5} in homes using gas from cooking could not be distinguished reliably from background [22]. Average PM_{2.5} concentrations in homes using gas for cooking were therefore taken as a 'baseline' for the contribution of all other sources, and were subtracted from average PM_{2.5} concentrations indoors in the homes using solid fuel to give PM_{2.5} concentrations attributable to using the solid fuel of interest; and we did not

Table 1 Concentrations of PM_{2.5} in homes in Ireland and Scotland using coal, wood or peat as primary heating fuel; and numbers of homes sampled

Time-weighted 24-hour average PM _{2.5} mean values (µg/m ³)	Coal	Peat	Wood	Gas for cooking
Ireland	8.4 (n = 12)	15.2 (n = 17)	4.8 (n = 5)	11.2 (n = 5)
(range)	(5–19)	(2–44)	(3–6)	(4–28)
Scotland	9.4 (n = 10)	18.0 (n = 3)	8.6 (n = 17)	7.4 (n = 11)
(range)	(1–17)	(8–34)	(2–23)	(2–13)
All	8.9 (n = 22)	15.6 (n = 20)	7.7 (n = 22)	8.6 (n = 16)
(range)	(1–19)	(2–44)	(2–23)	(2–28)

attempt to estimate a health burden from using gas for cooking.

Concentrations of PM_{2.5} in homes using coal and wood were very similar to those in homes using gas cooking [13], and so were very similar to background indoors from outdoor air and other sources; and therefore health impacts for burning coal and wood were also not estimated. However, the field study concentrations for peat (mean 24-hrs time weighted average 15.6 µg/m³) were higher than those for baseline / gas cooking (mean 24-hrs TWA PM_{2.5} concentrations 8.6 µg/m³) (Table 1). For both peat and gas cooking, the concentrations used were those from both Ireland and Scotland combined, so that these could be based on the greatest number of relevant measurements.

The decision was taken to estimate health impacts attributable to IAP from peat, but only in Ireland because, as described earlier, <0.5% of the population in Scotland was exposed. Finally, estimated annual average exposures were derived; assuming that exposure to PM_{2.5} indoors from peat burning was for 6 months of the year only.

Health outcomes; risk functions; background rates; impact functions

By using conversion factors and by accepting approximations it was possible, in quantifying the health impacts of IAP, to use the extensive international research evidence linking PM from outdoor air pollution with a very wide range of health outcomes, rather than being restricted to using the much more limited evidence base linking IAP and health.

The functions selected for outdoor air were based largely on those used in in the HIA and Cost-Benefit Analysis (CBA) of the European Commission's Clean Air for Europe (CAFÉ) programme [24]. The exceptions were the Concentration Response Functions (CRF) used for chronic bronchitis where an updated CRF based on the Swiss Cohort Study on Air Pollution and Lung and Heart Diseases in Adults (SAPALDIA) study [25] was used, and the CRF for respiratory hospital admissions which was based on a more recent meta-analysis from the INTARESE study [26]. Concentration response functions (CRFs) in the metric of PM₁₀ were converted to CRFs in PM_{2.5} using a factor which represents, on average, the relationship between PM₁₀ and PM_{2.5} in outdoor air across Europe. The conversion factor of 0.65 was obtained from concurrent measurements of PM₁₀ and PM_{2.5} in the EU-wide Air Pollution and Health. An European Information System (Aphis-3) study [27] which reported city-specific conversion factors for 10 European cities, with six (Bordeaux, Gothenburg, Lille, Marseille, Stockholm, Toulouse) giving values 0.65-0.67; three (Athens, Madrid, Tel Aviv) giving values close to

0.5, and one (Cracow) giving a factor of 0.8. The selected functions in PM₁₀ were 'translated' to PM_{2.5} using Equation 1.

$$PM_{2.5}CRF = \exp(\ln(PM_{2.5}CRF)) = \exp\left(\frac{\ln(PM_{10}CRF)}{0.65}\right) \quad (1)$$

The PM_{2.5} CRF can then be combined with the original background rate to obtain an impact function in the exposure metric of PM_{2.5} [22].

Relationships between outdoor PM and health are based on PM as measured at background concentrations, at a distance from source and from most of the population at risk; whereas IAPAH is concerned with PM in the home from indoor combustion sources in the same room or nearby – this is more like PM measured as personal exposure rather than background concentrations. We decided therefore to 'convert' CRFs in annual average PM_{2.5} from outdoor air into equivalent exposure-response functions (ERFs) for outdoor air, and link these ERFs with annual average PM_{2.5} attributable to use of peat for heating. Conversion was based on annual averages because HIA of outdoor air pollution is based on annual averages. Annual average is the relevant time-period for CRFs based on longer-term exposure; and while CRFs for short-term exposure typically use 24-hr daily concentrations, when (as here) the CRFs are linear with no threshold, the aggregate daily impacts values over one year can also be estimated using annual average PM_{2.5} [22]. To address this, a simple model was constructed of time spent in various micro-environments (indoors; outdoors in traffic; elsewhere outdoors) and associated average concentrations relative to background outdoors. A conversion or scaling factor was estimated as 0.7, by which the CRFs of outdoor air were divided to convert them to the required ERF [22]. The scaling factor is driven by the infiltration factor (0.55 (95% CI: 0.52-0.58) [22] and the time spent indoors. The at-risk population at various ages was then linked with estimated annual average exposures, with the ERFs, and with background rates, to give, for Ireland, the estimated annual burden of disease attributable to combustion of peat indoors. Background rates of disease were derived from a range of sources [22] including the Central Statistics Office, Ireland and the WHO Hospital Morbidity database.

Throughout, a simplifying convention was adopted as is usual when considering disease burden [28]. The calculations have been done as if the effect of exposure on disease and mortality were immediate; i.e. the effects of current exposure levels were estimated using current population and current background rates of morbidity and mortality, without taking account of any time lag between exposure and increased risk of disease or death.

Table 2 Percentage of Irish and Scottish population living in households where solid fuel is used as primary heating fuel or gas for cooking

Ireland	< 14 years (%)	14-20 years (%)	Men ² 21+ (%)	Women ² 21+ (%)	Households sampled (%)
Heating	9.5	11.8	8.5	9.3	8.4*
Gas Cooking ³	23.7	22.2	26.0	25.3	26.0*
Scotland ¹	< 15 years (%)	15-25 ² years (%)	Men ² >25 (%)	Women ² >25 (%)	Households sampled (%)
Heating	1.0	1.5	1.9	1.6	2.5**
Gas Cooking ⁴	57.5	53.3	54.9	53.8	49.3**

¹ Scottish data for solid fuel use aggregate over coal, peat or wood, smokeless fuel, and anthracite.

² The age-ranges used are unusual; we used slightly modified ranges to link with population numbers.

³ Gas cooking in Ireland: either piped gas or LPG.

⁴ Gas cooking in Scotland: i.e. gas cooker; or gas hob and electric oven;

*Percentage of a representative random sample of all private households in Ireland (total number sampled = 6,884).

** Percentage of households, total sample size of 9,194 for primary heating and 6,047 for cooking.

Results

Population exposure to solid fuel combustion / using gas for cooking

Table 2 shows the percentage of population living in homes where solid fuel is used as primary fuel for heating, or gas is used for cooking, in Ireland and Scotland. Based on corresponding fuel usage data, it was assumed that the population in Ireland exposed to indoor pollution from peat as primary heating fuel is half of that reported as using any type of solid fuel, i.e. 4.2% of total households, with associated percentages of the population exposed, as given for solid fuel use in Table 2. This provides an estimate of 199,090 exposed individuals: 42,644 aged under 14 years, 22,568 aged 14–20, and 133,878 aged 21 years or more.

Annual average concentrations

The mean 24-hr TWA concentration of PM_{2.5} attributable to peat was calculated as 7.1 µg/m³ (mean 24-hr average of 15.6 µg/m³ [13] minus 8.5 µg/m³ (mean 24-hr average from cooking with gas homes as baseline)).

The annual average mean 24-hr attributable concentration to which residents were exposed was calculated as the estimated attributable concentration of 7.1 µg/m³ × 0.5 (to adjust for exposure occurring for

approximately 6 ‘winter’ months of the year) giving an estimated annual average additional concentration of 3.55 µg/m³ based on 24-hr exposure and an estimated annual average additional concentration of 2.11 µg/m³ based on exposures in winter evenings only (6pm-midnight).

Health outcomes; risk functions; background rates; impact functions

Table 3 summarises the health outcomes, risk functions, background rates and impact functions that were calculated and used in the HBA.

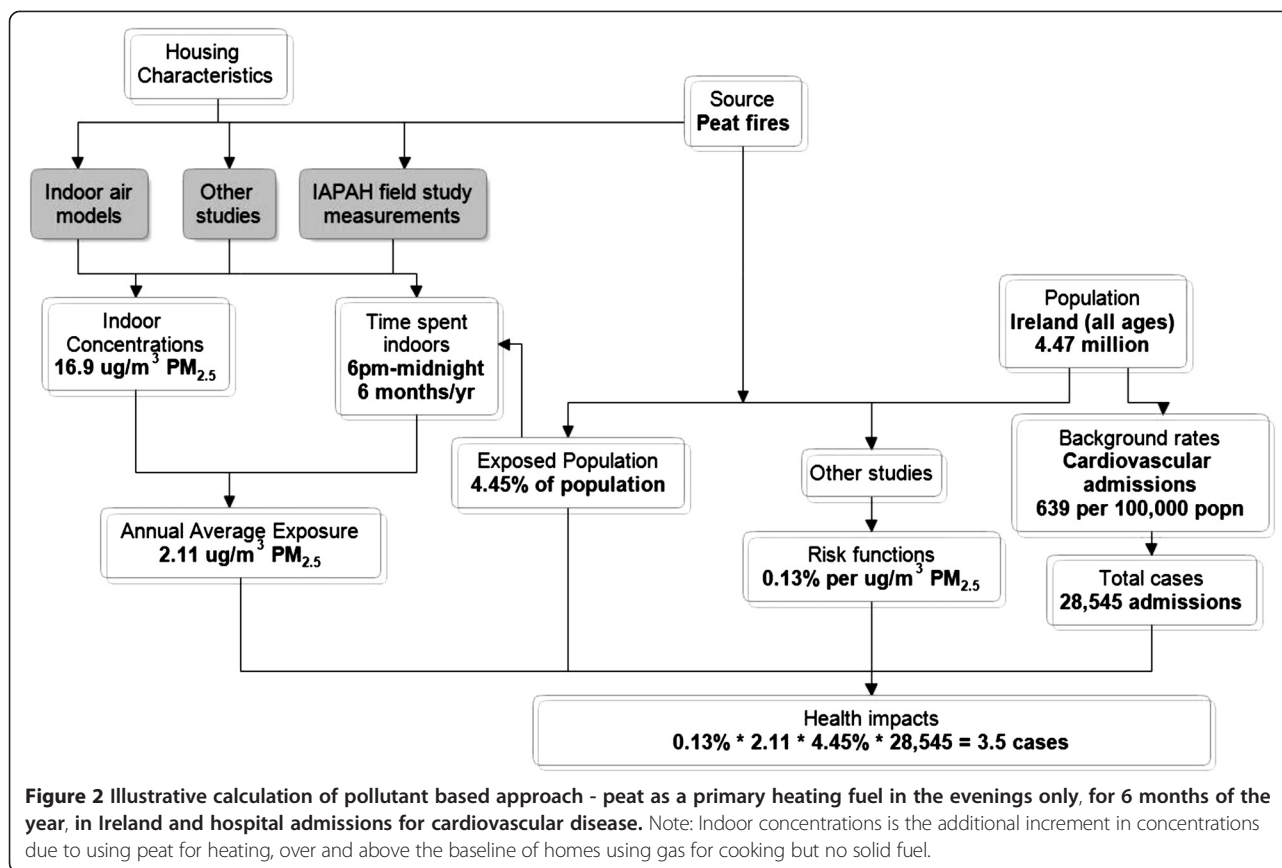
Health burden assessment

An illustrative calculation, using as an example exposure to peat as a primary heating fuel in the evenings only, for 6 months of the year, in Ireland and hospital admissions for cardiovascular disease, is provided in Appendix 1 and summarised in Figure 2. (Note that there is some rounding in the presentation of the results).

The health impacts associated with peat-burning for heating in Ireland are shown in Table 4. Two exposure scenarios were considered: firstly based on exposures in winter evenings only, giving an annual average increase of 2.11 µg/m³; and secondly based on 24-hr exposure,

Table 3 Summary of risk and impact functions used for each health outcome assessed for Ireland [24]

Health outcome	Age group	Background rate per 100,000	Risk function per 10 µg/m ³ PM ₁₀	Risk function per µg/m ³ personal exposure to PM _{2.5}	Impact function: cases per 100,000 exposed persons per 10 µg/m ³ personal exposure to PM _{2.5}
Chronic bronchitis	18+	390	22% [25]	5.11%	199
Cardiovascular hospital admissions	All ages	639	0.6% [2]	0.13%	8
Respiratory hospital admissions	All ages	1112	0.9% [26]	0.20%	22
Restricted activity days	18-64	2,200,000	4.75% [29]	0.68%	147,200
Lower respiratory symptom days (inc. cough)	5-14	5,600,000	4% [30]	0.89%	497,800
All-cause mortality	30+	1058	6% [31]	0.86%	91



in winter only, giving an annual average increase of $3.55 \mu\text{g}/\text{m}^3$. In summary, the assessment calculated 21 annual cases of all-cause mortality, 55 annual cases of chronic bronchitis, 4 annual cases of cardiovascular hospital admissions and 9 annual cases of respiratory hospital admissions attributable to an annual average increase in exposure of $2.11 \mu\text{g}/\text{m}^3$. Some 30,100 and 38,000 annual lower respiratory symptom days (including cough) and restricted activity days respectively were also estimated at these exposures. Results for all-day exposure were 1.68

times as large as those generated from evening exposures, reflecting higher evening concentrations (Table 4).

Discussion

This paper provides the first detailed estimates of the potential health burden of combustion-generated pollution from combustion of solid fuels at home for the Irish and Scottish populations. There were a number of methodological issues to overcome and we concentrate our discussion on these.

Table 4 Estimated annual burden on health in Ireland of indoor air pollution from burning peat as primary fuel in Ireland

Health endpoint	Age group	Total pop. at risk	% exposed	Exposure winter evenings (6pm-midnight), concentration = $2.11 \mu\text{g}/\text{m}^3$		Exposure 24-hr, concentration = $3.55 \mu\text{g}/\text{m}^3$	
				Annual no. cases/days	95% CI	Annual no. cases/days	95% CI
Chronic bronchitis	18+	3,012,306	4.30	55*	(5-98)	91*	(8-163)
Cardiovascular hospital admissions	All ages	4,467,854	4.45	4*	(2-5)	6*	(3-9)
Respiratory hospital admissions	All ages	4,467,854	4.45	9*	(7-10)	15*	(12-17)
Restricted activity days	18-64	2,841,127	4.30	38,000**	(33,400-42,600)	63,300**	(55,600-71,100)
Lower respiratory symptom days (inc cough)	5-14	602,919	4.75	30,100**	(15,000-45,400)	50,200**	(25,000-75,700)
All-cause mortality	30+	2,559,015	4.20	21*	(7-38)	34*	(11-63)

*number of cases, ** number of days.

Strength and limitations of the pollutant-based methodology used

There are strengths and limitations in using a pollutant-based approach compared with a source-based approach that uses a simple metric distinguishing between 'exposed' and 'non-exposed' people, as used e.g. in the earlier Global Burden of Disease (GBD) project [32]. One over-riding consideration is that the source-based approach was not viable in the present context, because (i) there is no substantial evidence base linking presence / absence of solid fuel use in Europe with chronic morbidity or mortality; and (ii) it is not meaningful to transfer, for use in Ireland and Scotland, relative risks from living in a house with solid fuel usage in developing countries, where many circumstances are different, including the extent of attributable IAP. When a source-based approach was used by GBD, no effects were quantified in Europe [32]. Although in this manuscript no effects were quantified for burning wood or coal for heating in Europe, the pollutant-based approach reached this position in a more informed way.

There are two other specific benefits. One is that the pollutant-based approach takes account of intensity of exposure, i.e. the concentrations actually experienced; and intuitively this is important, with the likelihood that risks are higher when exposures are higher, other things being equal. Secondly, while clearly there are issues (discussed below) in using risk functions in $PM_{2.5}$ from outdoor air to quantify the effects of indoor air pollution, doing so allows quantification of a much wider range of health outcomes than would be possible from the much more limited evidence base linking indoor air pollution and health.

As indicated above, the main disadvantage of the pollutant-based approach is the approximation or uncertainty in using relationships in $PM_{2.5}$ from outdoor air to quantify the health effects of $PM_{2.5}$ from indoor air sources. PM is a complex mixture whose detailed characteristics depend on source, and different sources also produce different mixtures of co-pollutants – gases, and coarse particles. Either of these aspects could lead to differing health effects caused by different mixtures from IAP and outdoor air pollution, even though indexed by similar exposures to $PM_{2.5}$. For example, $PM_{2.5}$ in outdoor air typically contains a substantial proportion of secondary PM, whereas PM indoors attributable to solid fuel use indoors will consist entirely of primary combustion PM.

However similar considerations apply to outdoor air pollution at different places and times, where PM comes from different sources and with different mixtures of gases [33]. Despite some evidence and much speculation about consequent differences in toxicity, current standard practice with outdoor air pollution HIA is not to try to express any such differences quantitatively [34]. Clearly there are some additional uncertainties in applying the same assumptions to IAP but it was considered that this

extrapolation is sufficiently similar to established practice for outdoor air that it is a reasonable way forward, especially given the lack of alternative methods. We were encouraged in this view by [35] who found a consistency in estimated risks of cause specific cardiopulmonary mortality from three very different sources of air pollution – outdoor air, ETS and active smoking – when expressed in the metric of log $PM_{2.5}$ dose; suggesting that health effect relationships from exposure to $PM_{2.5}$ are robust across differences in source, composition and intensity. This approach was further developed [36] and then supported by the most recent analyses of the internationally renowned GBD study [37], whose CRFs for air pollution are based on $PM_{2.5}$ from these three diverse sources.

Relationships between outdoor PM and health outcomes are based on PM measured at background concentrations, at distance from source and from most of the population at risk, whereas this study is concerned with PM in the home from indoor combustion sources in the same room or nearby. To address this difference, a conversion or scaling factor was applied to convert the outdoor air CRFs to the ERFs needed for the assessment of health burden. The ease with which this can be done numerically (it's a simple multiplication) should not hide that there are complex underlying issues which deserve further investigation. One is the variation in time and space between annual average concentration of $PM_{2.5}$ and the distribution of personal exposures (to pollution from outdoor sources) in the local population – we used a simple model based on average concentrations and exposures, which does not attempt to take account of individual variation in exposure or susceptibility.

While there are issues about the reliability of such a conversion factor, a more fundamental point is whether such a conversion should be done at all. The IAPAH field study measurements [13] do not exactly match either the situation outdoors or personal exposures. On balance, they were considered more similar to personal exposures and so the conversion was applied. This understanding of the relationship between static micro-environment based measures and personal exposure is one particular aspect that warrants wider discussion and consideration.

The present report focuses on burden attributable to current levels and exposure to IAP from peat burning in Ireland; it is not an analysis of the health effects of a change in policy and practice. Such an application would also require consideration of the time-lag ('cessation lag') between changes in exposure and changes in consequent health impacts. This is an aspect which needs to be considered in the CBA of potential policy changes but which typically is overlooked or 'fudged' in estimates of burden as is done here [28]; GBD, for example [37], bypasses the issue.

The effect on $PM_{2.5}$ concentrations of burning gas for cooking was estimated as being very small. Consequently

the health effects in the metric of $PM_{2.5}$ from using gas for cooking could not be estimated. NO_2 could have been used as an alternative indicator pollutant: using gas for cooking is widely linked with increases in NO_2 indoors and there are relationships linking NO_2 in outdoor air with a wide range of health outcomes, including mortality. However, these are widely understood as reflecting primarily an effect of the complex mixture, including PM, from traffic combustion, rather than an effect of NO_2 per se. It was considered that these could not be transferred with confidence from outdoor to indoor air, and so quantification using NO_2 as a marker was not attempted. Use of functions in NO_2 from studies of IAP (see e.g. [38]) would have led to a much narrower range of health outcomes than is possible with $PM_{2.5}$. It would be wrong however to conclude, on the basis of low attributable $PM_{2.5}$ concentrations, that using gas for cooking has no adverse effects on health.

Issues in accessing relevant data

As noted in Figures 1 and 2, HIA in this context involves estimating and integrating information from a wide variety of sources.

IAPAH aimed to estimate the health burden on the populations of Ireland and Scotland, attributable to (i) burning coal for heating; (ii) burning wood for heating; (iii) burning peat for heating; and (iv) using gas for cooking. This gave four populations to estimate in each of two countries; and these populations needed to be disaggregated by age and, to some extent, by gender, for compatibility with the CRFs / ERFs used elsewhere in the analysis. There were no immediate sources of relevant data, and insofar as information was available, it was not disaggregated by fuel type to the extent required. Consequently, considerable work was needed to identify, collate and cross-reference across multiple sources, each of which gave a partial insight, in order to estimate the exposed populations at the required degree of granularity. Both the limited information available from surveys in both countries, and the wider information on fuel usage (but not on corresponding population exposed) were needed.

The IAPAH field study [13] proved essential from the viewpoint of estimating $PM_{2.5}$ attributable to source. It had however, what appeared to be a limitation: it did not have a designed-in 'control' set of homes (e.g. using electricity for heating and cooking) which would allow adjustment for other sources of $PM_{2.5}$ indoors, such as $PM_{2.5}$ from cooking, from re-suspension of settled dust as people got on with living their lives at home, or from penetration indoors of outdoor $PM_{2.5}$. However, when it became clear that the measurements of $PM_{2.5}$ in homes using gas for cooking could not be distinguished reliably from the aggregate of these corrections, and when limited literature review reinforced that the contribution to $PM_{2.5}$ from gas

flames during cooking would be very small, it was possible to use homes using gas for cooking as a baseline for all other sources when estimating $PM_{2.5}$ due to solid fuel use.

We did not know of any existing source that would give us time-activity patterns in the detail required (e.g. vacuum cleaning, walking); nor did we wish to extrapolate from the limited time-activity data collected in the IAPAH field studies [13]. Instead the assumption of two different scenarios was used, one of exposure during evenings only, the other with exposure all day. Neither are fully realistic but together they provide some reasonable estimates of the range of potential population exposures and consequent health burden. We acknowledge that it is difficult to be certain of the representativeness of our study sample in the field study and make no claim that the single 24 hour measurement collected in 20 homes for peat burning and 16 homes for cooking with gas are representative of the concentrations experienced in all such homes in Ireland. The CRFs used from studies of outdoor air are standard ones. There are of course uncertainties, to some extent reflected in the 95% CIs. Information on background rates varied in quality according to the health outcome, for example, there is a greater likelihood of having routinely available data for more extreme events. Considering jointly the uncertainties in risk estimates and background rates, it is considered reasonable to put greatest confidence in results for mortality and for hospital admissions, with much greater uncertainties in results for chronic bronchitis, restricted activity days and days reporting respiratory symptoms.

Substantive results

No estimates were made of the health burden attributable to the particulate air pollution from combustion of gas for cooking or for the combustion of coal and wood for heating. This should not be interpreted as saying that there are no adverse health effects; for example, a meta-analysis in the metric of NO_2 suggests that use of a gas cooker at home increases the risk of children's respiratory illness [38]. It is however reasonable to infer that any associated burden of disease is small, in terms of overall public health in Ireland and in Scotland, and is unlikely to be associated with mass concentrations of fine particulate aerosol.

For the combustion of peat for heating, a contribution to indoor concentrations of $PM_{2.5}$ was identified, though $PM_{2.5}$ concentrations from all sources within homes burning peat was of the same order as concentrations of $PM_{2.5}$ outdoors in many cities. This is, of course, higher than outdoor $PM_{2.5}$ concentrations in the largely rural areas of Ireland and Scotland where peat is used for heating. The estimated population exposed in Scotland was so small that, given that the attributable concentrations of $PM_{2.5}$ were not large, a HBA was not attempted.

An assessment of health burden was undertaken for peat burning in Ireland and the resulting estimates show, as expected, some limited impacts on serious health outcomes, including mortality; and more numerous impacts on mild or transient conditions such as lower respiratory symptom days.

Conclusions

It is difficult to assess the accuracy of the methodology as a whole as the approach is new. As such, further methodological development is needed. It involves a key underlying methodological assumption, that relationships in the metric of $PM_{2.5}$ from outdoor air epidemiology can be adapted for use in quantifying the health impacts of air pollution from combustion sources indoors. This needs to be discussed more widely and a consensus reached in the wider research community on its strengths and weaknesses and its range of legitimate application. The recent use by the GBD project of quantification in $PM_{2.5}$ unified across very different sources [37] should highlight the issue considerably.

While the fundamental assumptions will understandably gain attention, a very important issue practically is that of obtaining the necessary information to implement the approach. In the present study some quite complex processing and linking of data from various sources was needed to estimate both the population exposed to IAP from using various kinds of solid fuels for heating, and the background rates of morbidity in the non-exposed population. We under-estimated these difficulties and we encourage others to learn from that, as we also hope to do.

One of the advantages of this study, despite all its uncertainties, is the clear illustration of the data gaps. Further work to fill these gaps not only on population exposed and background morbidity but also on more indoor-specific exposure response functions and greater understanding of the relationship between exposure to different sources, personal exposure and health is recommended.

In general, the indoor combustion sources examined had little impact on concentrations of $PM_{2.5}$ indoors. Use of peat for heating in Ireland was the only source where health impacts were estimated, and these estimates were found to be small – risks are higher in individual homes using peat for heating, although not higher than those experienced from exposure to outdoor air pollution in many cities in Western Europe; and the number of people exposed is not large.

Consequently, this study does not suggest that exposures in homes in Ireland and Scotland to IAP from using solid fuel for heating (and cooking), is a major public health issue. However, to inform policy development more fully, it would be useful to estimate also the effect on outdoor air pollution, and the resulting health

impacts, from burning solid fuels in homes in Ireland and Scotland.

Appendix

Appendix 1: Illustrative calculation

Peat used as a primary heating fuel in the evenings only, for 6 months of the year, in Ireland and hospital admissions for cardiovascular disease.

Step 1: Background rates

- The overall background rate of cardiovascular hospital admissions for Ireland is 638.9 per 100,000.
- This background rate is applied to the 2010 population (all ages) to obtain the number of cardiovascular admissions, annually, in the 2010 population.
 - $(638.9 \times 4,467,854)/100,000 = 28,545$ admissions.
- The percentage exposed to peat in each age group is derived from Table 3 and earlier.
 - 4.45% exposed (in total population).
- The number of cardiovascular admissions in the total population (28,545) is then multiplied by the proportion exposed (4.45%) to obtain the number of cardiovascular admissions in the exposed population.
 - 1,270 admissions.

Step 2: Relative risk

- The relative risk (RR) per 10 $\mu\text{g}/\text{m}^3$ PM_{10} for cardiovascular hospital admissions is 1.006 (95% CI: 1.003-1.009).
- The RR per 10 $\mu\text{g}/\text{m}^3$ PM_{10} is converted to an RR per 10 $\mu\text{g}/\text{m}^3$ $PM_{2.5}$ which results in a RR = 1.009 change in admissions per 10 $\mu\text{g}/\text{m}^3$ $PM_{2.5}$.
- The RR in the exposure metric of $PM_{2.5}$ is then adjusted to personal exposure by dividing the excess risk (0.009) by 0.7 = 0.013.
 - RR = 1.013 change in admissions per 10 $\mu\text{g}/\text{m}^3$ $PM_{2.5}$ personal exposure.
- The RR for personal exposure is then divided by 10 to obtain the % change in personal exposure per $\mu\text{g}/\text{m}^3$ $PM_{2.5}$.
 - 0.13% per $\mu\text{g}/\text{m}^3$ $PM_{2.5}$ personal exposure.
 - (The same is done for the upper and lower 95% CIs).

Step 3: Health burden

- The annual average $PM_{2.5}$ exposure indoors, based on evenings spent at home is then used with the background rate in the exposed population and the RR for personal exposure to obtain the burden of cardiovascular hospital admissions due to peat exposure.
 - $0.13\% \times 2.11 \mu\text{g}/\text{m}^3 \text{ } PM_{2.5} \times 1,270$ cases among exposed population = 4 attributable cases.

Abbreviations

APHEIS: Air pollution and health. An European information system;
CAFÉ: European commission's clean air for Europe; CBA: Cost-benefit analysis;
COPD: Chronic obstructive pulmonary disease; CRF: Concentration response functions; ETS: Environmental tobacco smoke; ERFs: Exposure-response functions; ExterneE: External costs of energy; GBD: Global burden of disease; HEIMTSA: Health and environment integrated methodology and toolbox for scenario assessment; HIA: Health impact assessment; IAPAH: Indoor air pollution and health; IAP: Indoor air pollution; IAQ: Indoor air quality; INTERASA: Integrated assessment of health risk of environmental stressors in Europe; PM_x: Particulate matter with an aerodynamic diameter < x μm; SHCS: Scottish house condition surveys; SAPALDIA: Swiss cohort study on air pollution and lung and heart diseases in adults; WHO: World health organization.

Competing interests

The author(s) declare that they have no competing interests.

Authors' contributions

KG was involved in gaining funding for the study, overall study design and interpretation of the data. KG led the drafting of the manuscript. FH was involved in gaining funding for the study, overall study design and interpretation of the data and led the response to the reviewers' comments. HC contributed to the identification of relevant data for the HIA and statistical analysis of the study. AS and ASJ contributed to the estimation, analysis and identification of relevant data for the HIA. SS and JA was involved in gaining funding for the study, overall study design and discussions relating to the use of exposure data. MC was involved in gaining funding for the study, overall study design and discussions relating to the use of exposure data. MC was also the project Principal Investigator. All authors assisted with the drafting and revision of the manuscript and have read and approved the final version.

Acknowledgements

The IAPAH project was funded under the Science, Technology, Research and Innovation for the Environment (STRIVE) programme 2007–2013. The programme is financed by the Irish Government under the National Development Plan 2007–2013. AL Shafirir was supported by the NIH Training Grant (T32 CA 09001) while drafting this paper for publication.

We wish to thank the input from the Project Advisory Committee: Dr Maurice Mulcahy, Health Service Executive West, Ireland; Dr Miriam Byrne, National University of Ireland, Galway; Prof. Bob Maynard, Health Protection Agency, UK; Prof Luke Clancy, Tobacco Free Research Institute, Ireland; Prof Sally Haw, University of Stirling, Scotland; and Sandra Kavanagh, EPA, Ireland. We would like to thank David McLaren, Assistant Statistician, the Scottish House Condition Survey, for providing us with the statistics on solid fuel usage in Scotland. The 'full chain' approach was adapted through the joint working with the EU HEIMTSA project¹ (the Health and Environment Integrated Methodology and Toolbox for Scenario Assessment study). Thanks also to Carole Garden (University of Aberdeen) and Paul Whelan (NUI, Galway) for the data collection in the IAPAH field study. Finally, thanks to Dr. Brian Miller and Dr Salim Vohra (IOM) for their useful comments on earlier versions of this manuscript; and two referees for constructive and helpful comments, in one case with great detail, which led us to improve the paper considerably.

Author details

¹Centre for Human Exposure Science, Institute of Occupational Medicine (IOM), Edinburgh, UK. ²Institute of Occupational Medicine (IOM), Edinburgh, UK. ³Harvard School of Public Health, Harvard University, Boston, MA, USA. ⁴Division of Applied Health Sciences, University of Aberdeen, Aberdeen, UK. ⁵Institute of Occupational and Environmental Medicine, University of Birmingham, Birmingham, UK. ⁶School of Physics, National University of Ireland, University Road, Galway, Ireland.

Received: 10 July 2012 Accepted: 12 June 2013

Published: 19 June 2013

References

1. World Energy Council: *Survey of Energy Resources*; 2007. http://www.worldenergy.org/publications/survey_of_energy_resources_2007/peat/704.asp.

- Coggins MA, Semple S, Hurley F, Shafirir A, Galea KS, Cowie H, Sanchez-Jimenez A, Garden C, Whelan P, Ayres JG: *Indoor Air Pollution and Health (IAPAH). STRIVE Report (2008-EH-MS-8-53)*. Dublin: Environmental Protection Agency. <http://www.epa.ie/pubs/reports/research/health/iapahreportmcoggins.html>.
- European Commission: *Scientific Committee on Health and Environmental Risks (SCHER) "Opinion on risk assessment on indoor air quality" DG Health and Consumers of the European Commission*. Brussels: European Commission; 2008. http://ec.europa.eu/health/ph_risk/committees/04_scher/docs/scher_o_055.pdf.
- Kurmi OP, Gaihre S, Semple S, Ayres JG: **Acute exposure to biomass smoke causes oxygen desaturation in adult women**. *Thorax* 2010, **65**:221–228.
- Fullerton DG, Semple S, Kalambo F, Suseno A, Malamba R, Henderson G, Ayres JG, Gordon SB: **Biomass fuel use and indoor air pollution in homes in Malawi**. *OEM* 2009, **66**:777–783.
- Levesque B, Allaire S, Gauvin D, Koutrakis P, Gingras S, Rhoads M, Prud'Homme H, Duchesne JF: **Wood Burning appliances and indoor air quality**. *Sci Total Environ* 2001, **281**:47–62.
- Fine PM, Cass GR, Simoneit BR: **Chemical characterization of fine particle emissions from the fireplace combustion of woods grown in the Southern United States**. *Environ Sci Technol* 2002, **36**:1442–1451.
- Gustafson P, Ostman C, Sallsten G: **Indoor levels of polycyclic aromatic hydrocarbons in homes with or without wood burning for heating**. *Environ Sci Technol* 2008, **42**:5074–5080.
- Garcia Algar O, Pichini S, Basagana X, Puig C, Vall O, Torrent M, Harris J, Sunyer J, Cullinan P: **Concentrations and determinants of NO₂ in homes of Ashford, UK and Barcelona and Menorca, Spain**. *Indoor Air* 2004, **14**:298–304.
- Moriske HJ, Drews M, Ebert G, Menk G, Scheller C, Schondube M, Konieczny L: **Indoor air pollution by different heating systems: coal burning, open fireplace and central heating**. *Toxicol Lett* 1996, **88**:349–354.
- Henderson KA, Parry S, Matthews IP: **Real-time measurement of short-term peaks in environmental CO concentrations in the homes of the elderly in South Wales**. *JESSE* 2006, **16**:525–530.
- Guo L, Lewis JO, McLaughlin JP: **Emissions from Irish domestic fireplaces and their impact on indoor air quality when used as a supplementary heating source**. *Global NEST J* 2008, **10**:209–216.
- Semple S, Garden C, Coggins M, Galea KS, Whelan P, Cowie H, Sánchez-Jiménez A, Thorne PS, Hurley JF, Ayres JG: **Contribution of solid fuel, gas combustion, or tobacco smoke to indoor air pollutant concentrations in Irish and Scottish homes**. *Indoor Air* 2012, **22**:212–223.
- Klepeis NE, Nelson WC, Ott WR, Robinson JP, Tsang AM, Switzer P, Behar JV, Hern SC, Engelmann WH: **The National Human Activity Pattern Survey (NHAPS): a resource for assessing exposure to environmental pollutants**. *JESSE* 2001, **11**:231–252.
- Bonnefoy XR, Annesi-Maesonà I, Aznar LM, Braubachi M, Croxford B, Davidson M, Ezratty V, Fredouille J, Ganzalez-Gross M, Van Kamp I, Maschke C, Mesbah M, Moissonier B, Monolbaev K, Moore R, Nicol S, Niemann H, Nygren C, Ormandy D, Robbel N, Rudnai P: **Review of evidence on housing and health**. In *Proceedings of the 4th Ministerial Conference on Environment and Health*. Hungary, Budapest; 2004.
- Brennan N, McCormack S, O'Connor T: *Ireland Needs Healthier Airways and Lungs – the Evidence (INHALE)*. 2nd edition. Irish Thoracic Society: Dublin; 2008.
- ISAAC: *International Study of Asthma and Allergies in childhood*. <http://isaac.auckland.ac.nz/>.
- European Commission: *EuroStat: Your key to European Statistics Total population database*. <http://epp.eurostat.ec.europa.eu/portal/page/portal/eurostat/home/>.
- General Registry Office for Scotland: *Mid 2010 population estimates for Scotland*. <http://www.gro-scotland.gov.uk/statistics/theme/population/estimates/mid-year/2010/index.html>.
- Energy in Ireland 1990–2007*. http://www.seai.ie/Publications/Statistics_Publications/Energy_in_Ireland/Energy_in_Ireland_1990-2007.pdf.
- Scottish Energy Study*. <http://www.scotland.gov.uk/Publications/2006/01/19092748/5>.
- Hurley F, Shafirir A, Cowie H, Sánchez Jiménez A, Ayres JG, Coggins M, Semple S, Galea KS: *Indoor Air and Health in Ireland and Scotland (IAPAH) Supplementary Report 3: Estimation of the Health Burden due to Solid Fuel Use and Use of Gas for Cooking*. <http://erc.epa.ie/safer/downloadCheck.jsp?isoID=282&rlD=10434&atlD=3315>.

23. Central Statistics Office Ireland: *Irish Household Budget Survey 2004/2005*.
http://www.cso.ie/en/media/csoie/releasespublications/documents/housing/hbsfinal/webcomplete.pdf.
24. Hurley F, Hunt A, Cowie H, Holland M, Miller B, Pye S, Watkiss P: *Methodology for the Cost-Benefit Analysis for CAFE: Volume 2: Health Impact Assessment*. European Commission; 2005. http://ec.europa.eu/environment/archives/cape/pdf/cba_methodology_vol2.pdf.
25. Schindler C, Keidel D, Gerbase MW, Zemp E, Bettschart R, Brändli O, Brutsche MH, Burdet L, Karrer W, Knöpfli B, Pons M, Rapp R, Bayer-Oglesby L, Künzli N, Schwartz J, Liu LJ, Ackermann-Liebrich U, Rochat T, SAPALDIA Team: **Improvements in PM10 Exposure and Reduced Rates of respiratory symptoms in a cohort of Swiss adults (SAPALDIA)**. *Am J Respir Crit Care Med* 2009, **179**:579–587.
26. Hoek G, Boogaard H, Knol A, de Hartog J, Slottje P, Ayres JG, Borm P, Brunekreef B, Donaldson K, Forastiere F, Holgate S, Kreyling WG, Nemery B, Pekkanen J, Stone VW, van der Sluijs J: **Concentration response functions for ultrafine particles and all-cause mortality and hospital admissions: results of a European expert panel elicitation**. *Environ Sci Technol* 2010, **44**:476–482.
27. Boldo E, Medina S, Le Tertre A, Hurley F, Mucke HG, Ballester F, Aguilera I, Eilstein D: **Apheis: Health Impact Assessment of Long-term Exposure to PM(2.5) in 23 European Cities**. *Eur J Epidemiol* 2006, **21**:449–458.
28. COMEAP: *The mortality effects of long term exposure to particulate air pollution in the United Kingdom*. Health Protection Agency for the Committee on the Medical Effects of Air Pollutants; 2010. http://www.hpa.org.uk/webc/HPAwebFile/HPAweb_C/1317137012567.
29. Ostro BD: **Air pollution and morbidity revisited: A specification test**. *J Environ Econ Manage* 1987, **14**:87–98.
30. Ward DJ, Ayres JG: **Particulate air pollution and panel studies in children: a systematic review**. *Occup Environ Med* 2004, **61**:13.
31. Pope CA III, Burnett RT, Thun MJ, Calle EE, Krewski D, Ito K, Thurston GD: **Lung cancer, cardiopulmonary mortality, and long-term exposure to fine particulate air pollution**. *JAMA* 2002, **287**:1132–1141.
32. Smith KR, Mehta S, Maeusezahl-Feuz M: **Indoor air pollution from household use of solid fuels**. In *Comparative Quantification of Health Risks*. Edited by Ezzati M, Lopez AD, Rodgers A, Murray CLP. Geneva: World Health Organization; 2004:1435–1493.
33. Shafrir A, Sánchez Jiménez A, Hurley F, Cowie H, Galea KS: *Indoor Air and Health in Ireland and Scotland (IAPAH) Supplementary Report 1: Health Impact Assessment: General Methodology and Its Application to the IAPAH study*. http://erc.epa.ie/safer/downloadCheck.jsp?isID=282&rID=10434&atID=3313.
34. WHO: *Health relevance of particulate matter from various sources: Report on a WHO Workshop, Bonn, Germany 26–27 March 2007*. Copenhagen: World Health Organization; 2007.
35. Pope CAI, Burnett RT, Krewski D, Jerrett M, Shi Y, Calle EE, Thun MJ: **Cardiovascular mortality and exposure to airborne fine particulate matter and cigarette smoke: Shape of the exposure-response relationship**. *Circulation* 2009, **120**:941–948.
36. Pope CAI, Burnett RT, Turner MC, Cohen A, Krewski D, Jerrett M, Gapstur SM, Thun MJ: **Lung cancer and cardiovascular disease mortality associated with ambient air pollution and cigarette smoke: Shape of the exposure-response relationships**. *Environ Health Perspect* 2011, **119**:1616–1621.
37. Lim SS, Vos T, Flaxman AD, Danaei G, Shibuya K, Adair-Rohani H, Amann M, Anderson HR, Andrews KG, Aryee M, et al: **A comparative risk assessment of burden of disease and injury attributable to 67 risk factors and risk factor clusters in 21 regions, 1990–2010: a systematic analysis for the Global Burden of Disease Study 2010**. *The Lancet* 2012, **380**:2224–2260.
38. Hasselblad V, Eddy DM, Kotchmar DJ: **Synthesis of environmental evidence: nitrogen dioxide epidemiology studies**. *J Air Waste Manage Assoc* 1992, **42**:662–671.

doi:10.1186/1476-069X-12-50

Cite this article as: Galea et al.: Using PM2.5 concentrations to estimate the health burden from solid fuel combustion, with application to Irish and Scottish homes. *Environmental Health* 2013 **12**:50.

Submit your next manuscript to BioMed Central and take full advantage of:

- Convenient online submission
- Thorough peer review
- No space constraints or color figure charges
- Immediate publication on acceptance
- Inclusion in PubMed, CAS, Scopus and Google Scholar
- Research which is freely available for redistribution

Submit your manuscript at
www.biomedcentral.com/submit

