



DIGITAL ACCESS TO SCHOLARSHIP AT HARVARD

Parameter Estimation From Improved Measurements of the Cosmic Microwave Background From QUaD

The Harvard community has made this article openly available.
[Please share](#) how this access benefits you. Your story matters.

Citation	Gupta, Sujata, Peter Ade, James Bock, Melanie Bowden, Michael L. Brown, Gary Cahill, Patricia G. Castro, and et al. 2010. Parameter estimation from improved measurements of the cosmic microwave background from QUaD. The Astrophysical Journal 716, no. 2: 1040-1046.
Published Version	doi:10.1088/0004-637X/716/2/1040
Accessed	February 19, 2015 1:15:00 PM EST
Citable Link	http://nrs.harvard.edu/urn-3:HUL.InstRepos:11129147
Terms of Use	This article was downloaded from Harvard University's DASH repository, and is made available under the terms and conditions applicable to Other Posted Material, as set forth at http://nrs.harvard.edu/urn-3:HUL.InstRepos:dash.current.terms-of-use#LAA

(Article begins on next page)

PARAMETER ESTIMATION FROM IMPROVED MEASUREMENTS OF THE COSMIC MICROWAVE BACKGROUND FROM QUaD

S. GUPTA¹, P. ADE¹, J. BOCK^{2,3}, M. BOWDEN^{1,4}, M. L. BROWN⁵, G. CAHILL⁶, P. G. CASTRO^{7,11}, S. CHURCH⁴, T. CULVERHOUSE⁸, R. B. FRIEDMAN⁸, K. GANGA⁹, W. K. GEAR¹, J. HINDERKS^{4,12}, J. KOVAC³, A. E. LANGE³, E. LEITCH^{2,3}, S. J. MELHUISH¹⁰, Y. MEMARI⁷, J. A. MURPHY⁶, A. ORLANDO^{1,3}, C. O’SULLIVAN⁶, L. PICCIRILLO¹⁰, C. PRYKE⁸, N. RAJGURU^{1,13}, B. RUSHOLME^{4,14}, R. SCHWARZ⁸, A. N. TAYLOR⁷, K. L. THOMPSON⁴, A. H. TURNER¹, E. Y. S. WU⁴, AND M. ZEMCOV^{1,2,3}

(QUAD COLLABORATION)

¹ School of Physics and Astronomy, Cardiff University, Queen’s Buildings, The Parade, Cardiff CF24 3AA, UK

² Jet Propulsion Laboratory, 4800 Oak Grove Dr., Pasadena, CA 91109, USA

³ California Institute of Technology, Pasadena, CA 91125, USA

⁴ Kavli Institute for Particle Astrophysics and Cosmology and Department of Physics, Stanford University, 382 Via Pueblo Mall, Stanford, CA 94305, USA

⁵ Astrophysics Group, Cavendish Laboratory, University of Cambridge, J. J. Thomson Avenue, Cambridge CB3 0HE, UK

⁶ Department of Experimental Physics, National University of Ireland Maynooth, Maynooth, Co. Kildare, Republic of Ireland

⁷ Institute for Astronomy, University of Edinburgh, Royal Observatory, Blackford Hill, Edinburgh EH9 3HJ, UK

⁸ Kavli Institute for Cosmological Physics, Department of Astronomy & Astrophysics, Enrico Fermi Institute, University of Chicago, 5640 South Ellis Avenue, Chicago, IL 60637, USA

⁹ APC/Université Paris 7–Denis Diderot/CNRS, Bâtiment Condorcet, 10, rue Alice Domon et Léonie Duquet, 75205 Paris Cedex 13, France

¹⁰ School of Physics and Astronomy, University of Manchester, Manchester M13 9PL, UK

Received 2009 September 9; accepted 2010 April 29; published 2010 May 26

ABSTRACT

We evaluate the contribution of cosmic microwave background (CMB) polarization spectra to cosmological parameter constraints. We produce cosmological parameters using high-quality CMB polarization data from the ground-based QUaD experiment and demonstrate for the majority of parameters that there is significant improvement on the constraints obtained from satellite CMB polarization data. We split a multi-experiment CMB data set into temperature and polarization subsets and show that the best-fit confidence regions for the Λ CDM six-parameter cosmological model are consistent with each other, and that polarization data reduces the confidence regions on all parameters. We provide the best limits on parameters from QUaD *EE/BB* polarization data and we find best-fit parameters from the multi-experiment CMB data set using the optimal pivot scale of $k_p = 0.013 \text{ Mpc}^{-1}$ to be $\{h^2\Omega_c, h^2\Omega_b, H_0, A_s, n_s, \tau\} = \{0.113, 0.0224, 70.6, 2.29 \times 10^{-9}, 0.960, 0.086\}$.

Key words: cosmic background radiation – cosmological parameters

Online-only material: color figures

1. INTRODUCTION

The cosmic microwave background (CMB) radiation contains fluctuations in temperature and polarization which have specific spectral features that record the evolution and constituent properties of the universe. The radiation is predicted to be polarized at the 10% level due to Thomson scattering in the presence of velocity inhomogeneities in the photon–baryon fluid at last scattering.

The standard cosmological model predicts acoustic peaks in CMB intensity and polarization spectra. Polarized CMB radiation can be decomposed into even-parity *E*-modes which are generated by scalar and tensor perturbations and odd-parity *B*-modes which are generated by gravitational waves and gravitational lensing effects. In this paper, we examine the cosmological implication polarization spectra including the spectra produced by the 2009 improved analysis of QUaD second and third

season observations presented in Brown et al. (2009). QUaD improves on the detections of *E*-modes made by the DASI (Kovac et al. 2002), CAPMAP (Hedman et al. 2002), Boomerang (Jones et al. 2006), *Wilkinson Microwave Anisotropy Probe* (WMAP; Dunkley et al. 2009), and CBI (Readhead et al. 2004) experiments, adding accurate polarization data at small angular scales.

We presented design and optics reports describing the QUaD¹⁵ experiment in Hinderks et al. (2009) and O’Sullivan et al. (2008). The first season of QUaD results appeared in Ade et al. (2008). We first reported measurements of temperature and polarization from the second and third season QUaD data in Pryke et al. (2009) and cosmological parameter analysis of the data was carried out in Castro et al. (2009). The second and third season data sets from the QUaD experiment have been re-analyzed using a ground template removal technique rather than field differencing to remove ground contamination. A description of the method and maps and spectra from two parallel and independent pipelines can be found in Brown et al. (2009). The re-analysis has effectively doubled the size of the QUaD field, increasing the precision of the CMB spectra measurements by $\sim 30\%$ and constraining the amplitude of the lensing *B*-modes to $< 0.57 \mu\text{K}^2$ at 95% confidence. In Brown et al. (2009), we also presented a cosmological parameter analysis which gauged the

¹¹ Current address: CENTRA, Departamento de Física, Edifício Ciência, Piso 4, Instituto Superior Técnico - IST, Universidade Técnica de Lisboa, Av. Rovisco Pais 1, 1049-001 Lisboa, Portugal.

¹² Current address: NASA Goddard Space Flight Center, 8800 Greenbelt Road, Greenbelt, MD 20771, USA.

¹³ Current address: Department of Physics and Astronomy, University College London, Gower Street, London WC1E 6BT, UK.

¹⁴ Current address: Infrared Processing and Analysis Center, California Institute of Technology, Pasadena, CA 91125, USA.

¹⁵ QUaD stands for “QUEST and DASI.” In turn, QUEST is “Q & U Extragalactic Survey Telescope” and DASI stands for “Degree Angular Scale Interferometer.”

effect of using the improved spectra from QUaD in combination with *WMAP* and ACBAR data, demonstrating that QUaD data add significant power for constraining cosmological models which include tensors and running of the spectral index.

In this paper, we carry out a cosmological parameter estimation in which we explore separately the strengths of CMB temperature data and CMB polarization data including the two year data release by BICEP (Chiang et al. 2010), highlighting the contributions of each to a multi-experiment analysis.

2. DATA AND METHOD

The QUaD data set consists of 143 selected days of data measured during the Austral winters of 2006 and 2007, at 100 GHz and 150 GHz, in a region of approximately 60 deg^2 , and has produced polarization spectra of unprecedented quality (Pryke et al. 2009; Brown et al. 2009). The QUaD experiment is the first experiment with the sensitivity to detect multiple acoustic oscillations in the *E*-mode spectrum and *TE* spectrum up to $\ell = 2000$ in addition to providing the lowest upper limits on *B*-mode detection (Brown et al. 2009). The spectra we used for cosmological data analysis, Temperature–Temperature (*TT*), Temperature–*E*-mode (*TE*), *E*-mode–*E*-mode (*EE*), and *B*-mode–*B*-mode (*BB*), are an optimally weighted combination of three sets of spectra: 100 GHz, 150 GHz, and 100 GHz–150 GHz cross, each with 23 band power values in the range $200 < \ell < 2000$.

Our CosmoMC-based parameter analysis is broadly similar to the Monte Carlo Markov chain analysis of Castro et al. (2009), hereafter Parameter Paper 1. A single, constant covariance matrix was estimated from simulations within the QUaD pipeline. The covariance matrix is populated only in the diagonal, 1st off-diagonal, and 2nd off-diagonal terms of each of the sub-blocks of the spectra. *TT*–*TE* and *TE*–*EE* have no 2nd off-diagonal terms, and *TT*–*EE* and *EE*–*BB* have covariance terms up to the 12th and 4th band powers, respectively. Beyond these regions the covariance matrix would be dominated by noise from the numerical simulations. We also generated offset-lognormal *x*-factors from noise-only simulations. This enables us to model the offset-lognormal likelihood for our parameter estimation as suggested by Bond et al. (2000).

We make use of templates of the Sunyaev–Zel’dovich (SZ) amplitude derived from Komatsu & Seljak (2002), which model a frequency-dependent contribution to the temperature power spectrum from the thermal SZ effect.¹⁶ We apply a cut of spectral power above $\ell = 2000$ to avoid the effects of residual point-source contamination and analytically marginalize over the SZ amplitude.¹⁷ The justification of a fit to SZ parameters on scales below $\ell = 2000$ has not been confirmed by the high multipole temperature data obtained by QUaD (Friedman et al. 2009).

We estimate likelihoods from our CMB distribution using the publicly available CosmoMC (Lewis & Bridle 2002) Monte Carlo Markov chain algorithm. The theoretical CMB model at every stage is obtained from the publicly available CAMB Boltzmann code (Lewis et al. 2000). The choice of baseline parameter set and the shape of the priors on parameters fitted concurrently will impact on the one-dimensional (1D) marginalized parameters calculated using the Monte Carlo Markov chain. For the standard Λ CDM six-parameter cosmological model,

Table 1

Baseline and Derived Parameters and Flat Priors on Baseline Parameter Set

Description	Parameter	Prior
Baryon density	$\Omega_b h^2$	0.001–0.999
Cold dark matter density	$\Omega_c h^2$	0.001–0.999
Acoustic peak scale	θ	0.3–12
Scalar fluctuation amplitude	$\ln(10^{10} A_s)$	2.7–4
Scalar fluctuation index	n_s	0.01–2
Optical depth	τ	0.01–0.8
Age	Age (Gyr)	10–20
Dark energy density	Ω_Λ	...
Matter density	Ω_m	...
Reionization depth	z_{re}	...
Hubble constant	H_0	40–100
Linear mass perturbation	σ_8	...

we limit this effect by using the *baseline* parameter combination comprising the baryon density, cold dark matter density, acoustic peak scale which records the expansion history of the universe, scalar spectral amplitude, scalar spectral index, and optical depth: $\{h^2 \Omega_b, h^2 \Omega_c, \theta, \ln(10^{10} A_s), n_s, \tau\}$; the use of $\ln(10^{10} A_s)$ also considerably increases the rate of convergence; $H_0 = 100 h \text{ km s}^{-1} \text{ Mpc}^{-1}$ is the Hubble constant. This is the default parameter set of CosmoMC (Lewis & Bridle 2002). When presenting two-dimensional (2D) plots of likelihood space evaluated from a CMB spectrum that does not have information in the angular range below the first acoustic peak, we use the combined $A_s \exp(-2\tau)$ parameter, a measure of the overall amplitude of the fluctuations in the spectra optimally sampled in the analysis using the baseline parameter set. The pivot scale used to evaluate the amplitude and spectral index is $k_p = 0.05 \text{ Mpc}^{-1}$ in the case where we use QUaD data exclusively. The pivot scale used for multi-experiment CMB spectra analysis is $k_p = 0.013 \text{ Mpc}^{-1}$ in common with our cosmological parameter results of Brown et al. (2009). We impose flat priors on the baseline parameter set (Table 1), make the assumption that the universe is flat, and include in all analyses the effects of weak gravitational lensing.

In addition, we make use of the CosmoMC utility to analytically marginalize over “nuisance” parameters, which is implemented for beam and calibration uncertainties (Bridle et al. 2002). The effective beam size for the combined QUaD spectra is 4.1 arcmin. The beam error is a function dominated by the sidelobes and varies with scale. The calibration uncertainty is 6.8% in power.

We provide parameter constraints on these baseline parameters and additionally include plots and constraints in the more traditional format of $\{h^2 \Omega_b, h^2 \Omega_c, H_0, A_s, n_s, \tau\}$.

We present 68% and 95% confidence regions for cosmological parameters and 2D and 1D marginalized plots using our independent statistics code on 10 or more Monte Carlo Markov chains with at least 100,000 converged steps. Tests of convergence were carried out using the Gelman–Rubin statistic (Gelman & Rubin 1992). We also made use of the Getdist statistics package, which is bundled with CosmoMC, as a consistency check of our results.

We carried out a parameter fit from the products of both QUaD data analysis pipelines to confirm consistency.

2.1. Other Data

We combine QUaD with the following CMB data sets: ACBAR (Reichardt et al. 2009) including the 2% beam error on the 5 arcmin beam and calibration error 4.6% in power; CBI

¹⁶ SZ templates are available at <http://lambda.gsfc.nasa.gov>.

¹⁷ Our analysis in Parameter Paper 1 did not include marginalization over an SZ amplitude or offset-lognormal factors.

Table 2
Cosmological Parameter Constraints Using QUaD Data

Parameter	QUaD <i>TE/EE/BB</i>	QUaD <i>EE/BB</i>	QUaD <i>TT</i>	QUaD	CMBmany ^a
$\Omega_b h^2$	$0.0233^{+0.0030}_{-0.0030}$	$0.0327^{+0.0097}_{-0.0098}$	$0.0218^{+0.0040}_{-0.0040}$	$0.0243^{+0.0025}_{-0.0025}$	$0.0225^{+0.0006}_{-0.0006}$
$\Omega_c h^2$	$0.124^{+0.030}_{-0.030}$	$0.162^{+0.032}_{-0.031}$	$0.117^{+0.036}_{-0.034}$	$0.119^{+0.0253}_{-0.0250}$	$0.114^{+0.006}_{-0.006}$
θ	1.040 ± 0.006	$1.032^{+0.011}_{-0.010}$	$1.045^{+0.011}_{-0.011}$	$1.041^{+0.005}_{-0.005}$	$1.041^{+0.003}_{-0.003}$
τ ^b	< 0.53 (95 % c.l.)	< 0.46 (95 % c.l.)	< 0.54 (95 % c.l.)	< 0.54 (95 % c.l.)	$0.087^{+0.017}_{-0.017}$
$\ln(10^{10} A_s)$ ^c	$3.53^{+0.31}_{-0.31}$	$3.74^{+0.19}_{-0.21}$	$3.48^{+0.34}_{-0.34}$	$3.58^{+0.28}_{-0.30}$	$3.09^{+0.04}_{-0.04}$
n_s ^c	$0.768^{+0.150}_{-0.151}$	$0.530^{+0.166}_{-0.173}$	$0.920^{+0.117}_{-0.118}$	$0.804^{+0.098}_{-0.098}$	$0.964^{+0.013}_{-0.013}$
Age (Gyr)	$13.7^{+0.4}_{-0.4}$	$13.1^{+0.93}_{-0.93}$	$13.6^{+0.6}_{-0.6}$	$13.5^{+0.4}_{-0.4}$	$13.7^{+0.1}_{-0.1}$
Ω_Λ	0.64 ± 0.18	$0.45^{+0.26}_{-0.27}$	$0.68^{+0.18}_{-0.20}$	$0.68^{+0.14}_{-0.14}$	$0.72^{+0.03}_{-0.03}$
Ω_m	$0.36^{+0.19}_{-0.18}$	$0.55^{+0.27}_{-0.26}$	$0.32^{+0.21}_{-0.18}$	$0.32^{+0.14}_{-0.14}$	$0.28^{+0.03}_{-0.03}$
z_{re}	$23.1^{+9.0}_{-10.0}$	$18.4^{+9.3}_{-9.8}$	$24.3^{+10.3}_{-11.2}$	$23.9^{+8.1}_{-9.0}$	$10.5^{+1.4}_{-1.4}$
H_0	$68.6^{+12.5}_{-12.1}$	$63.2^{+13.1}_{-12.1}$	$72.5^{+15.8}_{-15.6}$	$71.1^{+10.9}_{-10.9}$	$70.4^{+2.4}_{-2.4}$
σ_8 ^d	0.98 ± 0.17	$1.07^{+0.14}_{-0.15}$	$0.98^{+0.21}_{-0.21}$	$0.98^{+0.15}_{-0.15}$	$0.82^{+0.03}_{-0.03}$

Notes.

^a CMBmany describes the CMB data set including ACBAR (up to $l = 2000$), CBIPol, BICEP, and WMAP5 (see Section 2.1).

^b The parameterization of reionization by CAMB has recently been changed. First ionization of helium and hydrogen are now modeled as simultaneous, affecting the returned values of τ and the time at which z_{re} is defined has changed at the 6% level.

^c The pivot point for A_s and n_s used with all the data sets presented in this table is $k_p = 0.05 \text{ Mpc}^{-1}$.

^d The root mean squared linear mass perturbation is defined on a scale of $8 h^{-1} \text{ Mpc}$, where $H_0 = 100 h \text{ km s}^{-1} \text{ Mpc}^{-1}$.

(Sievers et al. 2009) with a stated calibration error of 2.6% in power; BICEP (Chiang et al. 2010), 5.6% calibration error and beam error varying with scale; the WMAP 5 year release (Nolta et al. 2009) using the publicly available WMAP 5 year likelihood software.¹⁸ We describe the set of CMB data above, excluding QUaD, as CMBmany. In Figure 1, QUaD polarization spectra are plotted together with WMAP, CBI, Boomerang¹⁹, and BICEP polarization data.

3. RESULTS

3.1. Parameter Constraints from QUaD Data

We present parameter constraints obtained from QUaD data in Table 2. The table presents cosmological parameters calculated from the QUaD *TE/EE/BB* spectra subset, QUaD *EE/BB* spectra, QUaD *TT* spectra, and the full QUaD data set. The parameters obtained from the subsets are consistent. Cosmological parameter limits from the CMBmany data set are also presented in Table 2.

In Figure 2, we display the parameter constraints and contours obtained from QUaD polarization data (*TE/EE/BB*) alone. The resultant confidence regions are considerably smaller than the corresponding confidence regions from WMAP 5 year *TE* data, overplotted in Figure 2, for all parameters except A_s and τ . The parameter constraints arrived at using QUaD *TE/EE/BB* are within 95% agreement with the parameter constraints from the full WMAP data set and those from WMAP *TE* spectrum. We have carried out, in addition, a combined analysis using QUaD and BICEP polarization data; these latest generation ground-based polarization experiments detect polarization at both low- and high- l . The preferred parameter regions for QUaD and BICEP *TE/EE/BB* data are also presented in Figure 2. We note that the center of the preferred range for the scalar spectral index from QUaD *TE/EE/BB* data is ~ 0.77 . We also note that this preferred range in n_s concurs with the QUaD polarization analysis of Parameter Paper 1, which found $n_s = 0.766 \pm 0.152$.

¹⁸ WMAP likelihood software is available at <http://lambda.gsfc.nasa.gov>.

¹⁹ QUaD shares its entire survey region with Boomerang, therefore we do not include Boomerang spectra in CMBmany.

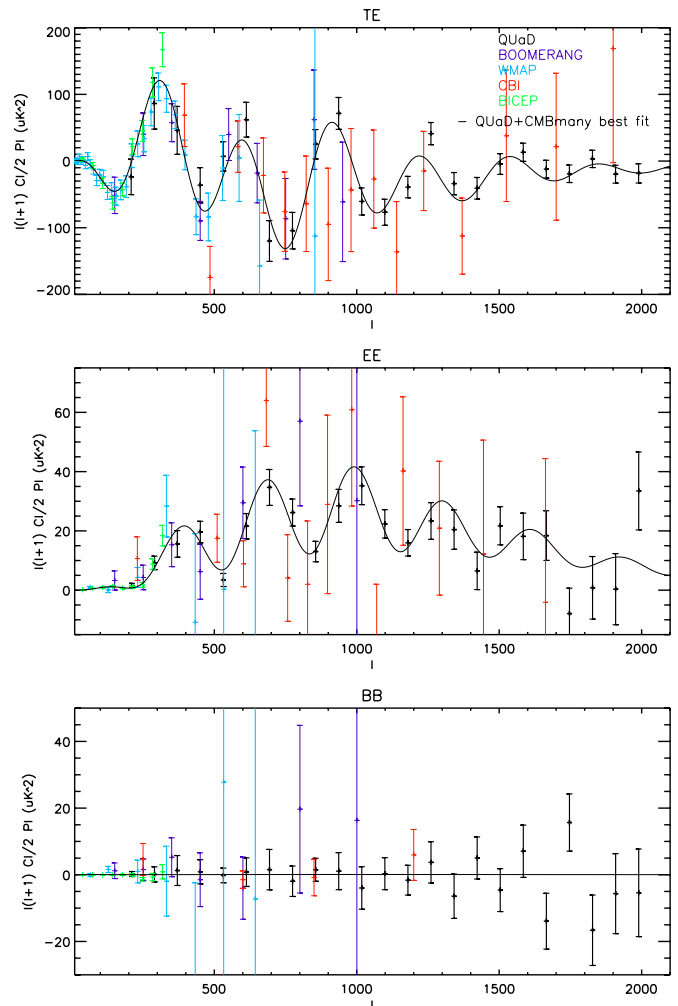
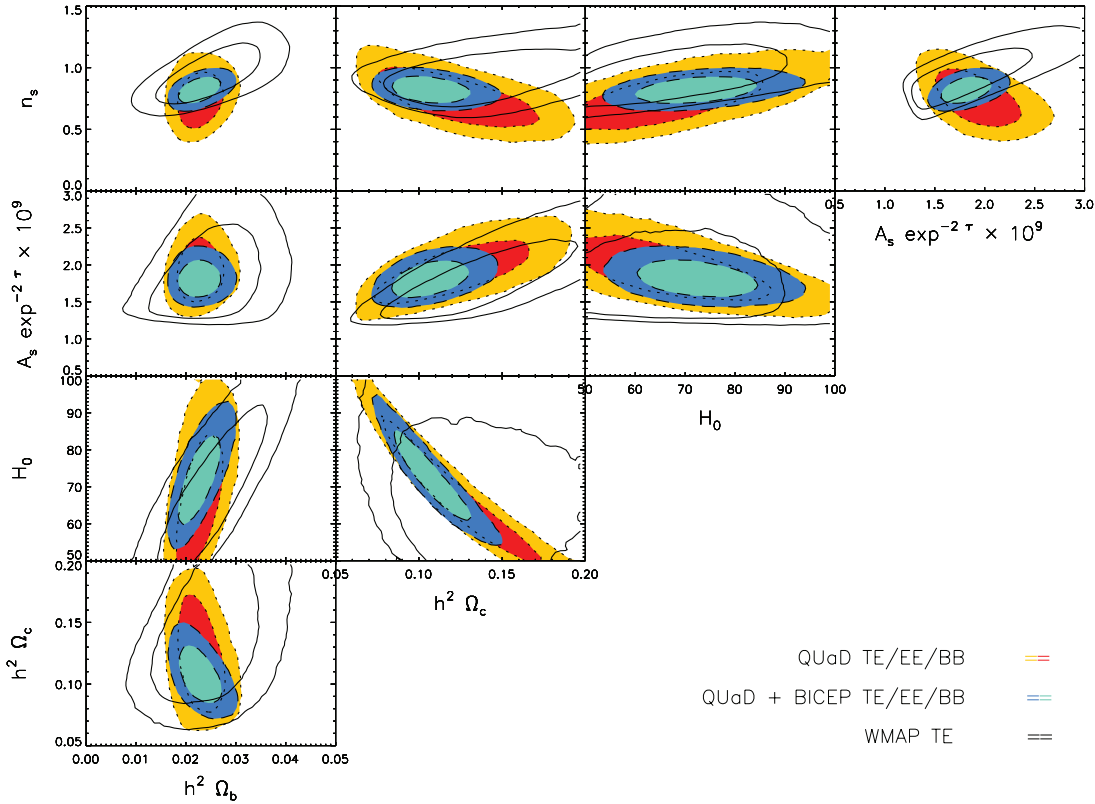


Figure 1. QUaD polarization spectra (black) plotted together with WMAP, Boomerang, CBI, and BICEP polarization spectra. The black lines are the QUaD+CMBmany theoretical best-fit spectra.

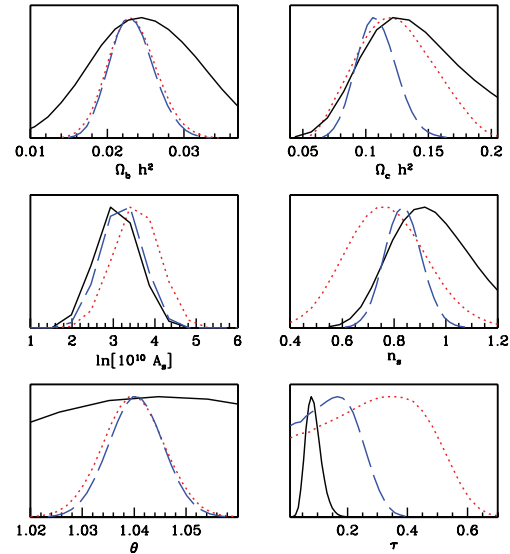
(A color version of this figure is available in the online journal.)



(a)

	QUaD TE/EE/BB		QUaD + BICEP TE/EE/BB		WMAP 5Yr TE	
$h^2 \Omega_b$	0.0233	+0.0030 -0.0030	0.0233	+0.0028 -0.0028	0.0257	+0.0068 -0.00067
$h^2 \Omega_c$	0.124	+0.030 -0.030	0.109	+0.015 -0.015	0.151	+0.045 -0.043
A_s	3.42×10^{-9}	+1.11 $\times 10^{-9}$ -1.06 $\times 10^{-9}$	2.48×10^{-9}	+0.48 $\times 10^{-9}$ -0.48 $\times 10^{-9}$	2.24×10^{-9}	+0.57 $\times 10^{-9}$ -0.56 $\times 10^{-9}$
τ	< 0.53	95% C.L.	< 0.30	95% C.L.	0.089	+0.025 -0.024
H_0	68.6	+12.5 -12.1	73.1	+8.1 -8.1	69.4	+14.2 -13.8
n_s	0.768	+0.150 -0.151	0.836	+0.071 -0.071	0.967	+0.157 -0.153

(b)



(c)

Figure 2. Parameter constraints and contours obtained from QUaD polarization data (*TE/EE/BB*) and QUaD polarization combined with BICEP polarization using a pivot scale of $k_p = 0.05$: (a) 2D contours at 95% and 68% levels for the traditional physical parameter set making use of the combined $A_s \exp -2\tau$ distribution; (b) constraints on the six traditional physical parameters; (c) 1D marginalized distributions of Monte Carlo Markov chain baseline parameters; QUaD polarization only constraints: red/orange dotted; QUaD+BICEP polarization constraints: blue/green dashed; constraints from *WMAP* 5 year polarization data: black solid lines.

(A color version of this figure is available in the online journal.)

The best-fit spectral index value obtained from the QUaD *EE/BB* spectra subset is 0.53. We show in Figure 3 that the likelihood surface is skewed over the range of scalar spectral index values. We overplot the likelihood for *WMAP TE* to demonstrate the best-fit regions for the spectral index overlap. To supplement our QUaD *EE/BB* only parameter fits, we

also carried out an analysis where we implement a Gaussian prior on the Hubble constant with the latest independent limits obtained by the *Hubble Space Telescope (HST)*; Riess et al. 2009) $74.2 \pm 3.6 \text{ km s}^{-1} \text{ Mpc}^{-1}$. The Hubble constant primarily impacts the width and separation of the spectral peaks, while the spectral index is evaluated from the *tilt* of the data. Applying

Table 3
Cosmological Parameter Constraints Using Combined CMB Temperature and Polarization

Parameter	QUaD+CMBmany $TE/EE/BB^a$	QUaD+CMBmany TT^b	QUaD + CMBmany
$\Omega_b h^2$	0.0204 ± 0.0020	0.0231 ± 0.0008	0.0224 ± 0.0005
$\Omega_c h^2$	0.124 ± 0.014	$0.109^{+0.007}_{-0.007}$	$0.113^{+0.005}_{-0.005}$
θ	1.036 ± 0.005	$1.042^{+0.003}_{-0.002}$	$1.041^{+0.003}_{-0.002}$
τ^c	$0.073^{+0.017}_{-0.017}$	$0.127^{+0.079}_{-0.079}$	$0.086^{+0.017}_{-0.017}$
$\ln(10^{10} A_s)^d$	$3.22^{+0.08}_{-0.08}$	$3.17^{+0.15}_{-0.15}$	$3.13^{+0.04}_{-0.03}$
n_s^d	0.842 ± 0.055	$0.983^{+0.026}_{-0.025}$	$0.960^{+0.013}_{-0.013}$
Age (Gyr)	$14.1^{+0.3}_{-0.3}$	$13.6^{+0.2}_{-0.2}$	$13.6^{+0.2}_{-0.2}$
Ω_Λ	0.63 ± 0.10	$0.75^{+0.04}_{-0.04}$	$0.73^{+0.03}_{-0.03}$
Ω_m	0.37 ± 0.10	$0.25^{+0.04}_{-0.04}$	$0.27^{+0.03}_{-0.03}$
z_{re}	$10.1^{+1.5}_{-1.5}$	$12.6^{+5.5}_{-5.7}$	$10.4^{+1.4}_{-1.4}$
H_0	$63.8^{+6.1}_{-6.1}$	$73.7^{+3.8}_{-3.8}$	$70.6^{+2.3}_{-2.3}$
σ_8	$0.79^{+0.06}_{-0.07}$	$0.83^{+0.05}_{-0.05}$	$0.82^{+0.03}_{-0.03}$

Notes.

^a CMBmany $TE/EE/BB$ is the combination of WMAP, CBI, and BICEP polarization spectra.

^b CMBmany TT is the combination of WMAP, CBI, ACBAR, and BICEP temperature spectra.

^c The parameterization of reionization by CAMB has recently been changed. First ionization of helium and hydrogen are now modeled as simultaneous, affecting the returned values of τ and the time at which z_{re} is defined has changed at the 6% level.

^d The pivot point for A_s and n_s is $k_p = 0.013 \text{ Mpc}^{-1}$.

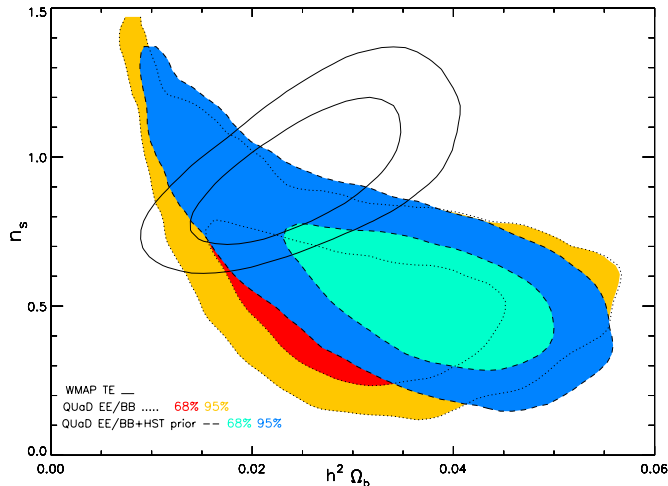


Figure 3. Likelihood contours obtained from QUaD pure polarization data (EE/BB) at 95% and 68% levels for the scalar spectral index and the baryon density, displaying the tail of the distribution to high values of n_s . QUaD EE/BB only constraints: red/orange dotted; QUaD EE/BB constraints with a Gaussian prior on the Hubble constant: blue/green dashed; constraints from WMAP 5 year polarization data: black solid lines.

(A color version of this figure is available in the online journal.)

the information we have on the Hubble constant improves our parameter confidence ranges, while not preferentially impacting the spectral index signal in the data. These contours are also plotted in Figure 3, confirming the robustness of the EE/BB analysis. The parameter constraints from QUaD EE/BB spectra improve on the corresponding constraints we presented in Parameter Paper 1.

The constraint obtained on the acoustic peak scale, θ , is as tight from QUaD EE/BB only as it is from the QUaD temperature spectrum and the constraint on $h^2 \Omega_c$ is tighter.

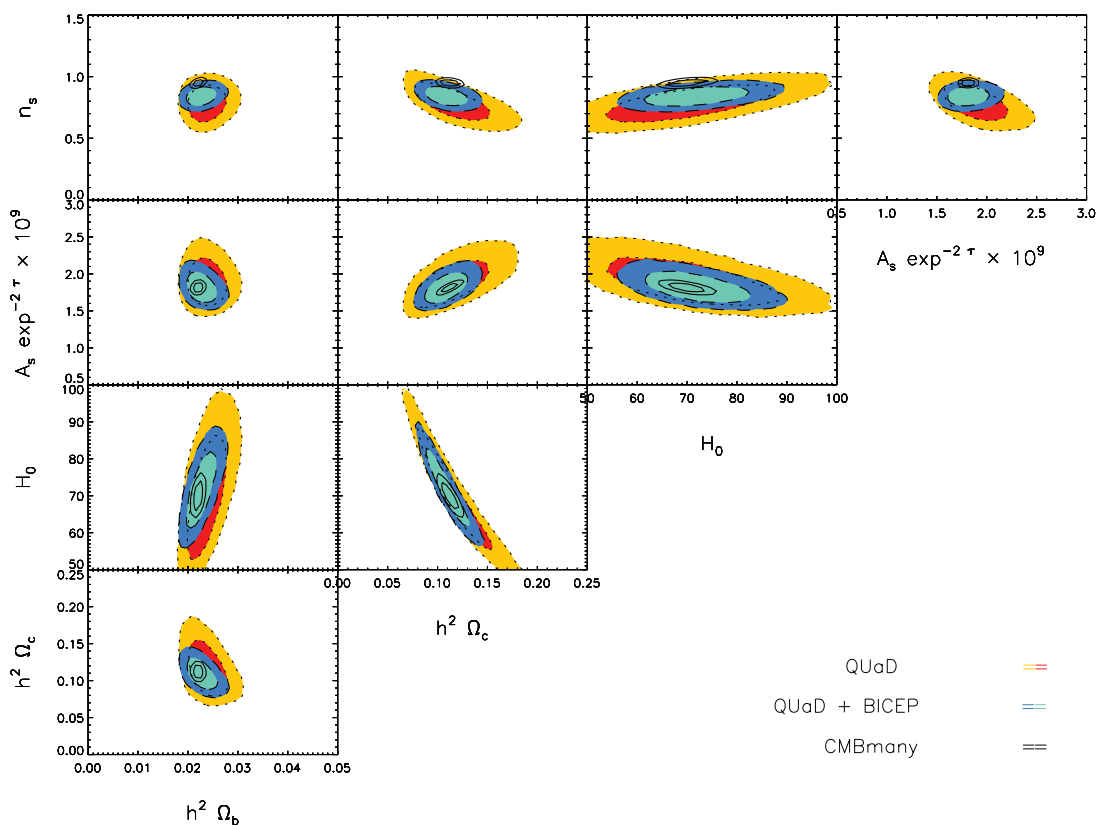
The parameter ranges arrived at by using the complete QUaD data set agree with the values from the CMBmany data set within the 95% contour limits, as demonstrated in Figure 4. The

preferred parameter range for the baryon density we presented in Parameter Paper 1 from the full Pryke et al. (2009) QUaD data set was $\sim 50\%$ higher than that we now provide. The Hubble constant was also $\sim 30\%$ higher than the value we return from the analysis of the new non-field-differenced data. The data analysis pipeline which produced the Brown et al. (2009) spectra differs from the Pryke et al. (2009) analysis in the implementation of a new noise-removal strategy and in modeling a new beam shape. This results in a material difference in the spectra in addition to a reduction of cosmic variance. The scalar spectral amplitude of Parameter Paper 1 (which we quoted as part of a combined $A_s \exp(-2\tau)$ parameter) was significantly shifted relative to our current preferred range, the corollary being in extended parameter analysis isocurvature ratios were more constrained. However, as our parameter analysis has evolved, the confidence limits presented in Parameter Paper 1 cannot be directly compared to the limits in this paper. Repeating the parameter analysis of the second and third season QUaD data of Pryke et al. (2009), using our current CosmoMC-based pipeline, we find 68% confidence regions for $A_s \exp(-2\tau)$ and the Hubble constant that are 30% greater than the corresponding values obtained using the improved data set of Brown et al. (2009).

3.2. Parameter Constraints Combining Data Sets

We continue our parameter analysis by investigating the effect of adding QUaD data to the CMBmany temperature and polarization ensemble data set.

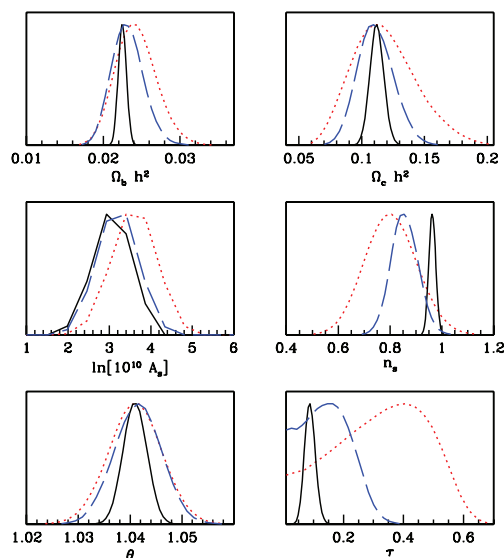
In order to investigate the influence of polarization in our cosmological analysis, we carried out cosmological parameter fits using the TT and $TE/EE/BB$ subsets of the QUaD+CMBmany data set. The resulting best-fit regions, presented in Table 3 and Figure 5, are consistent, although the polarization spectra prefer lower values for the Hubble constant and acoustic peak scale as well as a lower spectral index. The multi-experiment $TE/EE/BB$ data set contributes information on all six cosmological parameters.



(a)

	QUaD		QUaD and BICEP		CMBmany	
$h^2 \Omega_b$	0.0243	+0.0025 -0.0025	0.0232	+0.0020 -0.0020	0.0226	+0.0006 -0.0006
$h^2 \Omega_c$	0.119	+0.0253 -0.0250	0.113	+0.014 -0.014	0.114	+0.006 -0.006
A_s	3.58×10^{-9}	$+1.06 \times 10^{-9}$ -1.04×10^{-9}	2.48×10^{-9}	$+0.42 \times 10^{-9}$ -0.42×10^{-9}	2.19×10^{-9}	$+0.08 \times 10^{-9}$ -0.08×10^{-9}
τ	< 0.54	95% C.L.	< 0.27	95% C.L.	0.087	+0.017 -0.017
H_0	71.1	+10.9 -10.9	72.4	+6.9 -6.9	70.4	+2.4 -2.4
n_s	0.804	+0.098 -0.098	0.857	+0.052 -0.051	0.964	+0.013 -0.013

(b)



(c)

Figure 4. Parameter constraints and contours obtained from QUaD temperature and polarization data using a pivot scale of $k_p = 0.05$: (a) 2D contours at 95% and 68% levels for the traditional physical parameter set making use of the combined $A_s \exp -2\tau$ distribution; (b) constraints on the six traditional physical parameters; (c) 1D marginalized distributions of Monte Carlo Markov chain baseline parameters; QUaD temperature and polarization constraints: red/orange dotted; QUaD+BICEP temperature and polarization constraints: blue/green dashed; constraints from CMBmany (ACBAR/*WMAP*/CBI/BICEP) (see Section 2.1): black solid lines. The best-fit value of τ from QUaD temperature and polarization data is 0.314.

(A color version of this figure is available in the online journal.)

4. CONCLUSIONS

We present best-fit regions for the standard Λ CDM six-parameter model using QUaD CMB spectra alone, and QUaD data in combination with CMBmany (BICEP, ACBAR, CBI, and *WMAP*).

QUaD data provide an unprecedented amount of independent information over four spectra in a multipole range of $200 < \ell < 2000$. This improves the ensemble of CMB data sets specifically providing independent cohesive information over an angular range broad enough to span the sparsely populated “hinge” multipole regions of the CMBmany data set.

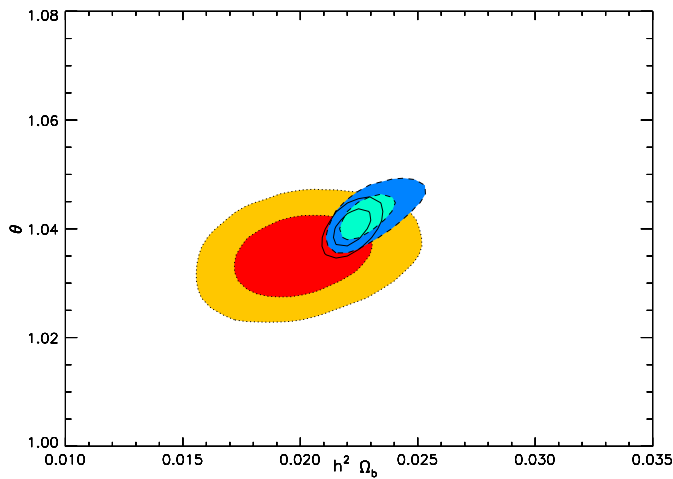


Figure 5. 2D marginalized contours $h^2\Omega_b$ against θ from separate temperature and polarization combined QUA and CMBmany data sets. QUA polarization+CMBmany polarization constraints: red/orange dotted; QUA temperature+CMBmany temperature constraints: blue/green dashed; constraints from QUA+CMBmany: black solid lines.

(A color version of this figure is available in the online journal.)

Data from the QUA experiment, as a single, discerning data set can provide excellent independent measures of the baryon density in the universe, the cold dark matter density, and the acoustic scale, which measures the universe's evolution history.

QUA $TE/EE/BB$ spectra provide considerably tighter constraints on four of the six standard Λ CDM parameters than can be obtained from 5 year *WMAP* polarization data. We present the best confidence ranges obtained from QUA EE/BB spectra alone. The QUA temperature spectrum alone also provides good parameter constraints in excellent agreement with the *WMAP* 5 year best-fit parameters.

QUA is funded by the National Science Foundation in the USA, through grants ANT-0338138, ANT-0338335, & ANT-0338238, by the Science and Technology Facilities Council (STFC) in the UK, and by the Science Foundation Ireland. P.G.C. acknowledges funding from the Portuguese FCT. S.E.C. acknowledges support from a Stanford Terman Fellowship.

J.R.H. acknowledges the support of an NSF Graduate Research Fellowship, a Stanford Graduate Fellowship, and a NASA Postdoctoral Fellowship. Y.M. acknowledges support from a SUPA Prize studentship. C.P. acknowledges partial support from the Kavli Institute for Cosmological Physics through the grant NSF PHY-0114422. E.Y.W. acknowledges receipt of an NDSEG fellowship. M.Z. acknowledges support from a NASA Postdoctoral Fellowship. We acknowledge the use of the CAMB (Lewis et al. 2000), CosmoMC (Lewis & Bridle 2002), and HEALPix (Górski et al. 2005) packages. We acknowledge the use of the Legacy Archive for Microwave Background Data Analysis (LAMBDA). Support for LAMBDA is provided by the NASA Office of Space Science. This work was performed using the computational facilities of the Advanced Research Computing @ Cardiff (ARCCA) Division, Cardiff University.

REFERENCES

- Ade, P., et al. 2008, *ApJ*, 674, 22
 Bond, J. R., Jaffe, A. H., & Knox, L. 2000, *ApJ*, 533, 19
 Bridle, S. L., Crittenden, R., Melchiorri, A., Hobson, M. P., Kneissl, R., & Lasenby, A. N. 2002, *MNRAS*, 335, 1193
 Brown, M. L., et al. 2009, *ApJ*, 705, 978
 Castro, P. G., et al. 2009, *ApJ*, 701, 857
 Chiang, H. C., et al. 2010, *ApJ*, 711, 1123
 Dunkley, J., et al. 2009, *ApJ*, 701, 1804
 Friedman, R. B., et al. 2009, *ApJ*, 700, L187
 Gelman, A., & Rubin, D. B. 1992, *Stat. Sci.*, 7, 457
 Górski, K. M., Hivon, E., Banday, A. J., Wandelt, B. D., Hansen, F. K., Reinecke, M., & Bartelmann, M. 2005, *ApJ*, 622, 759
 Hedman, M. M., Barkats, D., Gundersen, J. O., McMahon, J. J., Staggs, S. T., & Winstein, B. 2002, *ApJ*, 573, L73
 Hinderks, J. R., et al. 2009, *ApJ*, 692, 1221
 Jones, W. C., et al. 2006, *ApJ*, 647, 823
 Komatsu, E., & Seljak, U. 2002, *MNRAS*, 336, 1256
 Kovac, J. M., Leitch, E. M., Pryke, C., Carlstrom, J. E., Halverson, N. W., & Holzzapfel, W. L. 2002, *Nature*, 420, 772
 Lewis, A., & Bridle, S. 2002, *Phys. Rev. D*, 66, 103511
 Lewis, A., Challinor, A., & Lasenby, A. 2000, *ApJ*, 538, 473
 Nolte, M. R., et al. 2009, *ApJS*, 180, 296
 O'Sullivan, C., et al. 2008, *Infrared Phys. Technol.*, 51, 277
 Pryke, C., et al. 2009, *ApJ*, 692, 1247
 Readhead, A. C. S., et al. 2004, *Science*, 306, 836
 Reichardt, C. L., et al. 2009, *ApJ*, 694, 1200
 Riess, A. G., et al. 2009, *ApJ*, 699, 539
 Sievers, J. L., et al. 2009, arXiv:0901.4540