



DIGITAL ACCESS TO SCHOLARSHIP AT HARVARD

Genetic Surveillance Detects Both Clonal and Epidemic Transmission of Malaria following Enhanced Intervention in Senegal

The Harvard community has made this article openly available.
[Please share](#) how this access benefits you. Your story matters.

Citation	Daniels, Rachel Fath, Hsiao-Han Chang, Papa Diogoye Sène, Danny C. Park, Daniel Edward Neafsey, Stephen Schaffner, Elizabeth Julia Hamilton, et al. 2013. Genetic surveillance detects both clonal and epidemic transmission of malaria following enhanced intervention in Senegal. PLoS ONE 8(4): e60780.
Published Version	doi:10.1371/journal.pone.0060780
Accessed	February 19, 2015 12:04:53 PM EST
Citable Link	http://nrs.harvard.edu/urn-3:HUL.InstRepos:11807558
Terms of Use	This article was downloaded from Harvard University's DASH repository, and is made available under the terms and conditions applicable to Open Access Policy Articles, as set forth at http://nrs.harvard.edu/urn-3:HUL.InstRepos:dash.current.terms-of-use#OAP

(Article begins on next page)

Genetic Surveillance Detects Both Clonal and Epidemic Transmission of Malaria following Enhanced Intervention in Senegal

Rachel Daniels^{1,2,9}, Hsiao-Han Chang^{3,9}, Papa Diogoye Sène⁴, Danny C. Park^{2,3}, Daniel E. Neafsey², Stephen F. Schaffner², Elizabeth J. Hamilton⁵, Amanda K. Lukens^{2,1}, Daria Van Tyne¹, Souleymane Mboup⁴, Pardis C. Sabeti^{2,3,6}, Daouda Ndiaye⁴, Dyann F. Wirth^{1,2}, Daniel L. Hartl^{3,9}, Sarah K. Volkman^{1,2,7*9}

1 Department of Immunology and Infectious Diseases, Harvard School of Public Health, Boston, Massachusetts, United States of America, **2** Broad Institute, Cambridge, Massachusetts, United States of America, **3** Department of Organismic and Evolutionary Biology, Harvard University, Cambridge, Massachusetts, United States of America, **4** Faculty of Medicine and Pharmacy, Cheikh Anta Diop University, Dakar, Senegal, **5** Department of Human Evolutionary Biology, Harvard University, Cambridge, Massachusetts, United States of America, **6** FAS Center for Systems Biology, Harvard University, Cambridge, Massachusetts, United States of America, **7** School of Nursing and Health Sciences, Simmons College, Boston, Massachusetts, United States of America

Abstract

Using parasite genotyping tools, we screened patients with mild uncomplicated malaria seeking treatment at a clinic in Thiès, Senegal, from 2006 to 2011. We identified a growing frequency of infections caused by genetically identical parasite strains, coincident with increased deployment of malaria control interventions and decreased malaria deaths. Parasite genotypes in some cases persisted clonally across dry seasons. The increase in frequency of genetically identical parasite strains corresponded with decrease in the probability of multiple infections. Further, these observations support evidence of both clonal and epidemic population structures. These data provide the first evidence of a temporal correlation between the appearance of identical parasite types and increased malaria control efforts in Africa, which here included distribution of insecticide treated nets (ITNs), use of rapid diagnostic tests (RDTs) for malaria detection, and deployment of artemisinin combination therapy (ACT). Our results imply that genetic surveillance can be used to evaluate the effectiveness of disease control strategies and assist a rational global malaria eradication campaign.

Citation: Daniels R, Chang H-H, Sène PD, Park DC, Neafsey DE, et al. (2013) Genetic Surveillance Detects Both Clonal and Epidemic Transmission of Malaria following Enhanced Intervention in Senegal. PLoS ONE 8(4): e60780. doi:10.1371/journal.pone.0060780

Editor: Alfredo Mayor, Barcelona Centre for International Health Research/Hospital Clinic/IDIBAPS/University of Barcelona, Spain

Received: September 24, 2012; **Accepted:** March 2, 2013; **Published:** April 4, 2013

Copyright: © 2013 Daniels et al. This is an open-access article distributed under the terms of the Creative Commons Attribution License, which permits unrestricted use, distribution, and reproduction in any medium, provided the original author and source are credited.

Funding: This study is supported by the Bill and Melinda Gates Foundation, National Institutes of Health (grants 1R01AI075080-01A1, 1R56AI082589, and 5R01GM061351), ExxonMobile Foundation, and National Institutes of Health Fogarty (grant D43TW001503). RFD is supported by T32 training grant (AI007535). The funders had no role in study design, data collection and analysis, decision to publish, or preparation of the manuscript.

Competing Interests: The authors have declared that no competing interests exist.

* E-mail: svolkman@hsph.harvard.edu

⁹ These authors contributed equally to this work.

Introduction

The *Plasmodium falciparum* malaria parasite causes nearly 700,000 deaths annually, primarily in sub-Saharan Africa [1], where disease prevalence and transmission intensity are highest. Because parasite populations are large in Africa, they are more genetically diverse there than elsewhere. They also exhibit less correlation between allelic states at different loci (i.e. less linkage disequilibrium, or LD), reflecting both the large population and also higher disease transmission rates, which facilitate sexual outcrossing [2–6].

We sought to use changes in parasite population diversity to detect longitudinal changes in disease transmission, and thereby to develop useful metrics for monitoring antimalarial interventions. As a tool to track parasite diversity, we employed a previously developed ‘molecular barcode’, composed of assays for 24 single nucleotide polymorphisms (SNPs) across the *P. falciparum* genome [7]. We applied the barcode to samples from Senegal. Since 2005, Senegal has dramatically increased deployment of intervention

strategies, including ITNs for prevention, RDTs for detection, and ACTs for treatment, resulting in an overall decline in a number of malaria indicators [8], and making it a good site for detecting changes in parasite diversity.

Results

Identification of repeated barcodes

We sampled patients annually from 2006–2011, from the Service de Lutte Anti-Parasitaire (SLAP) clinic in Thiès, Senegal under ethical approval, and genotyped the samples using the barcode (Methods). We first compared molecular barcodes within and between years. We confined this analysis to infections caused by a single parasite strain to reduce ambiguity from heterozygosity. The most prominent signal in our longitudinal collection of molecular barcode data was a steady increase in the number of identical barcodes observed in distinct patient samples (Figure 1A). Whereas 10% of samples shared barcodes during the 2006 transmission season, more than 50% were within identical-

barcode clusters in 2010 and 2011. Repeated instances of the same barcode were not limited to clusters of 2 or 3; in 2008 one barcode was observed in 22 distinct patient samples, and in 2011 nearly a quarter of the sampled infections exhibited another shared barcode. Overall, the proportion of unique parasite types decreased significantly over the study period (Figure 1B; $P=0.006$, ANOVA). We investigated whether parasite samples exhibiting identical SNP barcodes are also genetically identical at other sites in the genome by hybridizing multiple clusters of samples with shared barcodes to a whole-genome SNP array that interrogates 17,000 polymorphic positions [6]. Parasite samples sharing barcodes exhibited array-based genotype profiles as similar to each other as technical replicate hybridizations of a single laboratory reference strain (Figure S1), suggesting that samples sharing barcodes are nearly genetically identical and likely derived from the same ancestor.

Clonal propagation vs. epidemic expansion

The increasing occurrence of repeated barcodes (i.e. nearly genetically identical samples) in later years could be attributed to either “clonal propagation” or “epidemic expansion”, or both. Clonal propagation is intrinsically linked to low parasite transmission, owing to the life history of *Anopheles* mosquito vectors. Female *Anopheles* mosquitoes ingest haploid *P. falciparum* gametocytes during a blood meal from a human host. The gametocytes differentiate into gametes in the mosquito midgut, where they unite to form a diploid zygote, which in turn undergoes meiosis to restore haploidy prior to inoculation of the next human host. Genetic outcrossing during the parasite’s sexual stage occurs only when a mosquito bites a host infected simultaneously by multiple parasite strains and gametocytes from multiple genetically distinct strains circulate in the blood of a host; bites of singly-infected hosts result in the union of nearly genetically identical gametes in the mosquito midgut, and consequently result in self-fertilization and clonal parasite transmission. To test this possibility, we compared the proportion of multiple infections over time and found that the proportion of mixed infections was significantly greater in 2006–2007 compared to subsequent years (Figure 2 and Table S1). While the patient parasitemia reported for those years varied between years, there was no trend in decreased parasitemia or sampling bias that could contribute to the trend (Figure S2). This pattern of decreasing proportion of multiple infections is consistent with the decrease in the proportion of unique barcodes in Figure 1B, suggesting that “clonal propagation” due to decreased outcrossing is also consistent with the appearance and increase of repeated barcodes.

“Epidemic expansion” means that particular clones expand in the population, perhaps due to advantageous haplotypes, or a founder effect at the beginning of each transmission season, or both. Factors promoting variance in reproductive success, such as enhanced production of gametocytes, evasion of the host immune response, or enhanced transmission by selected or alternative mosquito vectors could select and enrich for favored parasite lineages in the population. Epidemic expansion is supported by the observation of two exceptionally prevalent barcodes in 2008 and 2011 (shown in Figure 3). To further test the possibility of epidemic expansion in our population, we used the framework described in Maynard Smith et al. [9] and Anderson et al. [4]. We compared multilocus linkage disequilibrium (LD) using the standardized index of association (I_A^S) [10], when including and excluding samples with the same barcode. The result shows significant LD from 2008 to 2011 when all samples are included, and no significant LD when only considering unique barcodes (Table 1), suggesting that the significant LD from 2008 to 2011 is

caused by repeated barcodes; that is, some epidemic clones. There is no significant LD in 2006 and 2007 whether we included or omitted repeated barcodes. The lack of significant LD in 2006 and 2007, and the restoration of linkage equilibrium from 2008 to 2011 after excluding repeated barcodes suggest that the background population is still under linkage equilibrium and the decrease in the population recombination rate due to lowered transmission is very recent. Taken together with our analyses of the proportion of mixed infections, a likely explanation for these observations is a reduction of outcrossing in 2007–2008 followed by an expansion of individual parasite genotypes.

Moreover, we examined whether parasite samples with shared barcodes were collected in proximal dates. The difference in collection dates among samples with identical barcodes is significantly smaller than that among samples with different barcodes (Wilcoxon rank sum test, $P=0.005$), suggesting temporal expansion of particular clones in the population. However, because there was no temporal trend of increasing prevalence of a single parasite type (Figure 3) we do not believe that this was a selection event caused by emergence of drug resistance. It could possibly be a selection caused by emergence of resistance to host immune response, but the advantage disappears over time due to the corresponding changes in host, or non-selective forces. Alternatively, it might be possible that the parasite clones that appear to expand in the community were derived from an imported line novel to the area and thus the local population has little “strain-specific” immunity. We compared the pairwise differences between two exceptionally prevalent barcodes in 2008 and 2011 and the rest of strains with the pairwise differences among all strains from the same year, and found that the differences between two prevalent repeated barcodes and the rest of strains are not significantly higher than the differences among all strains from the same year (Figure S3). This result indicates that we do not observe the evidence of imported lines from the current data. Additional sequence information of polymorphic sites will be helpful to distinguish migrants from local population.

Effective population size

Reduced transmission can lead to lower parasite effective population size (N_e). To test whether the deployment of intervention strategies in recent years reduces malaria transmission, we examined the parasite effective population size (N_e). Population genetic theory predicts that a decreasing population should undergo increased genetic drift, manifested as increasingly variable allele frequencies across generations. The relevant measure of effective size in this context is the variance effective population size; this we estimated by measuring the fluctuation in allele frequencies across transmission seasons of the SNPs comprising the molecular barcode. We observed large fluctuations in allele frequencies over time (Figure S4). The variance N_e was calculated by all polymorphic SNPs using a likelihood approximation (Methods) and observed an extremely small variance N_e over time (Table 2 and Table S2). The estimated variance effective size in 2011 is only 10, a strikingly low value that reflects large fluctuations in allele frequencies. In order to exclude the possibility that some particular parasite types are so successful in the population that lower the estimate of effective population size, we also calculated N_e by counting each repeated barcode once (Table S2). The estimates of N_e are still very small (less than 250) although some of the confidence intervals could not be determined. This extremely small effective population size predicts low effectiveness of selection efficiency and low rate of adaptation in Senegal.

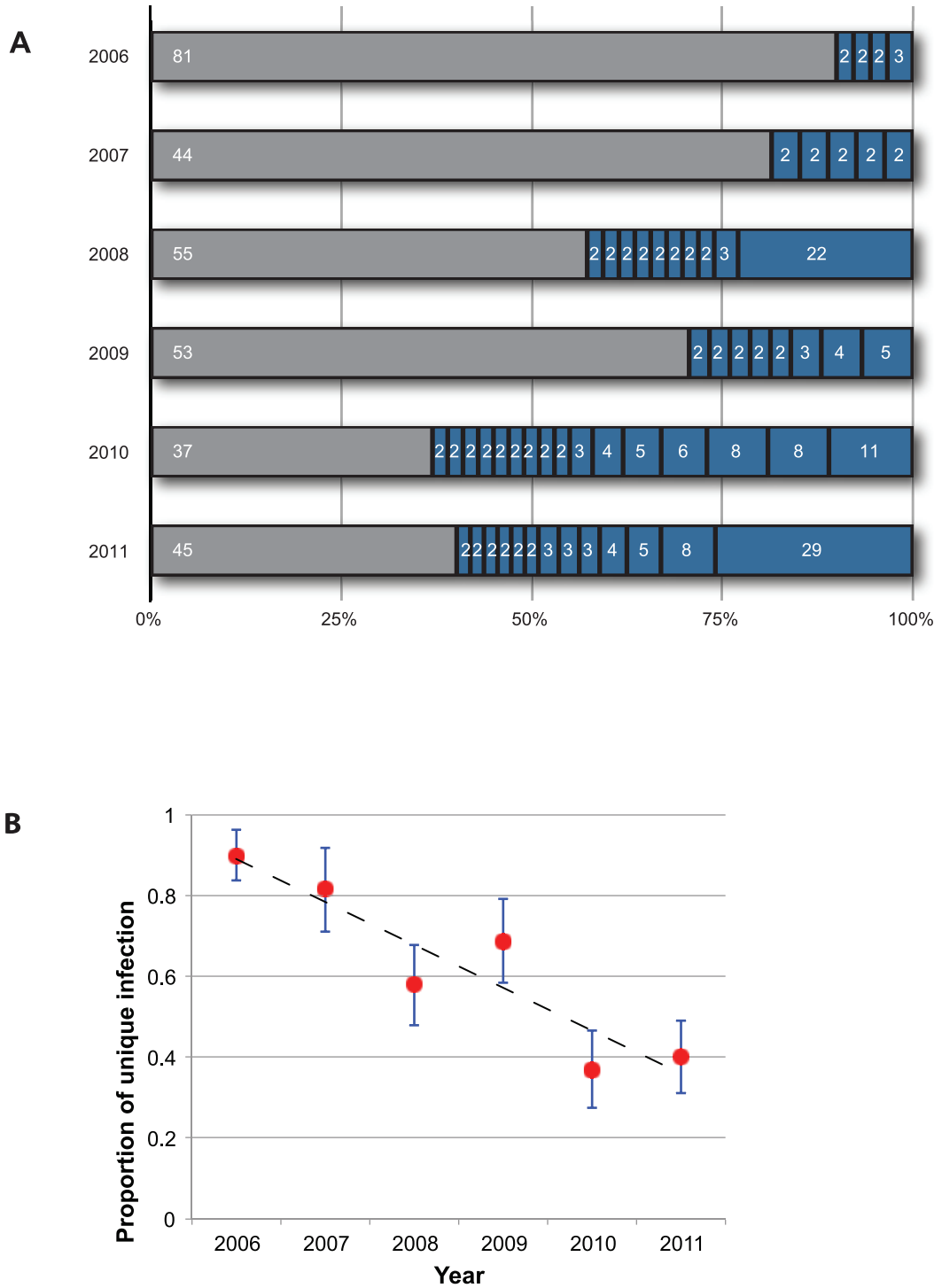


Figure 1. Temporal changes in population characteristics. A. Decreasing prevalence of unique parasite barcode profiles. For every collection season, the number of samples with unique barcodes (grey) and the number of samples in each shared-barcode cluster (blue) are shown. **B. Ratio of shared vs. unique barcode profiles.** The proportion of samples residing outside of shared-barcode clusters is shown per year. The error bars show 95% confidence interval of mean (± 1.96 SE). doi:10.1371/journal.pone.0060780.g001

Persistence across years

We also investigated the barcode dataset for evidence of clonal parasite persistence across years. Malaria transmission in Senegal is sharply seasonal, coinciding with annual rainfall patterns. Some

parasite clones did indeed appear in more than one transmission season (Figure 3). These included clonal parasite types that persisted into the subsequent year and some that persisted longer, sometimes reappearing two or three seasons after initial detection.

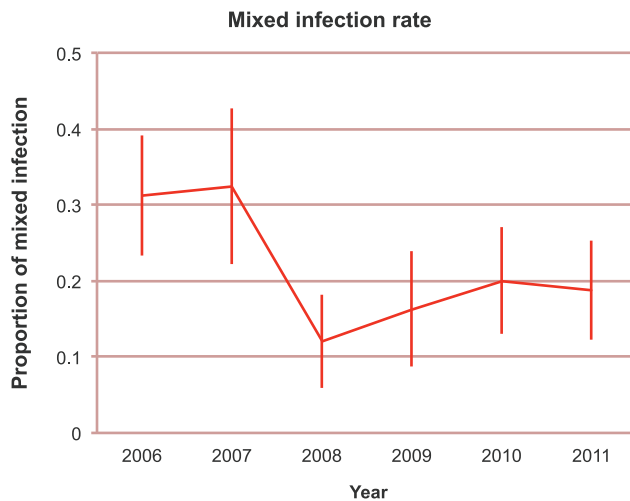


Figure 2. Mixedness over time. Proportion of mixed infections decreased between 2007 and 2008. The error bars show 95% confidence interval of mean (± 1.96 SE). doi:10.1371/journal.pone.0060780.g002

The increasing ratio of parasites persisting between years from 2006 to 2011 was statistically significant ($P=0.008$, ANOVA) (Figure S5). Notably, we found an increase in the frequency of identical-barcode parasites persisting between 2010 and 2011: of the 15 identical barcodes that persisted for at least one year, ten were found during that pair of years. Because parasite samples sharing the same barcode are likely to be identical by descent, the persistence of identical barcodes across years suggests multiple sequential transmission cycles among singly-infected hosts, and indicates clonal propagation.

To explore the patterns of repeated barcodes, and to rule out sampling biases in our study design, we examined the spatial and temporal relationships between samples exhibiting identical barcodes. We insured that clonal parasites were derived from independent natural infections by assaying 18 SNPs in the human host genetic material. We found no evidence of serial sampling of the same host among samples exhibiting the same barcode (Table S3). Examination of patient data confirmed that barcodes observed more than once were not clustered by household, ruling out a simple hypothesis of transmission among family members. Further analysis of the parasites within these samples by sequencing of the highly-polymorphic T-epitope region of the *csf* gene provided further evidence of highly related parasites (Table S4). We found that samples with identical barcodes are distributed across the entire transmission season and clinical catchment area, indicating a lack of temporal or spatial clustering. Our data therefore suggest a regional-level change in transmission dynamics from 2006 to 2011, rather than localized shifts.

Moreover, we compared ages of hosts before and after we observed the significant increase in the frequency of repeated barcodes. There is no significant difference in host ages between 2006–2007 and 2008–2011 (t test, $P=0.094$), suggesting that the patterns of identical barcodes are unlikely to be confounded by host ages.

Conclusions and Discussion

With the restructuring of the National Malaria Control Programme (NMCP) in 2005, Senegal implemented an organized approach to malaria control and elimination. From 2006 to 2010, the NMCP increased access to insecticide-treated bednets (ITNs)

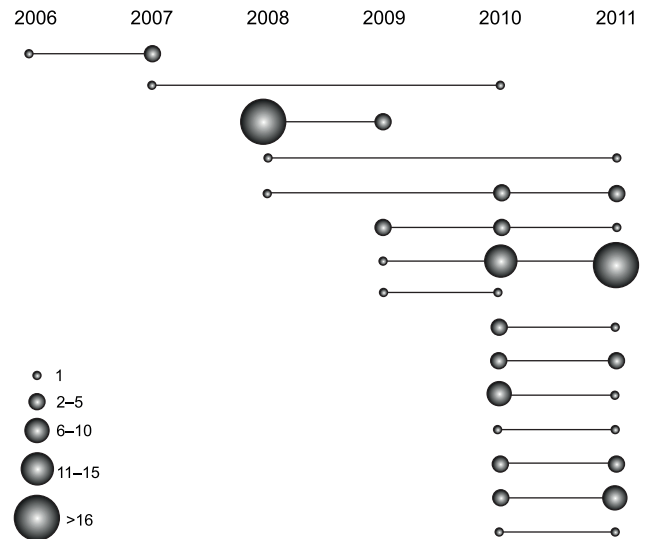


Figure 3. Clonal transmission of parasites across transmission seasons. Size and distribution of same parasite types across collection years. doi:10.1371/journal.pone.0060780.g003

and residual insecticide spraying, with the number of reported bednets per home increasing more than 35% from 2008 to 2010. Combined with no-charge access to ACTs from 2007, the country reported a 41% drop in the number of malaria cases between 2008 and 2009 [8]. The findings of increasing repeated barcodes, persistence, and proportion of single infections across transmission seasons demonstrate the usefulness of genetic tools for monitoring the effectiveness of intervention strategies against infectious disease. This type of evidence could inform control efforts as a real-time gauge of the progress towards control, elimination, or eradication. Our ability to differentiate between clonal and epidemic population structures and to track these changes within the population could lend a more refined view of the subtle effects and varying degrees of effectiveness in control programs.

While our study reported the first evidence of clonal propagation and epidemic expansion in Africa, other groups have also used genetic tools to study parasite dynamics in geographically distinct regions, and reported clonal lineages and persistence over time [11–13]. Roper et al. showed the persistence of parasites over the dry season in Sudan and Echeverry et al. showed similar in Colombia [14,15]. Both Branch et al and Griffing et al point to distinct genetic types within South America and Peru in particular, and attribute population patterns to periodic epidemics in regions with relatively low transmission levels [11,12]. Similarly, Nkhoma et al showed the decreases in the proportion of unique parasite genotypes and the proportion of multiple infections along with large reduction in transmission over time. However, they found no evidence of reduction in N_e during the same period of time, which was possibly caused by migrations between nearby populations, or the lack of power in analysis of temporal data when the true N_e is not small enough [13]. Moreover, Mobegi et al. 2012 showed that the background of non-clonal population structure has been widespread elsewhere surrounding our study area in West Africa, indicating that there has been dramatic changes in the population structure of this site in contrast to the surrounding regional parasite population structure [16]. These studies, including our study, indicate the power of using genetic tools to study parasite population structure, and highlight the need for further detailed study of parasite population dynamics in more extensive

Table 1. Multilocus linkage disequilibrium.

		2006	2007	2008	2009	2010	2011
All samples	I_A^S	-0.0049	0.0049	0.0306	0.0072	0.0293	0.1111
	P-value	0.989	0.162	$<1 \times 10^{-4}$	0.021	$<1 \times 10^{-4}$	$<1 \times 10^{-4}$
Unique barcodes only	I_A^S	-0.0059	0.002	0.0012	0.0038	0.0042	0.0041
	P-value	0.997	0.332	0.329	0.151	0.145	0.128

doi:10.1371/journal.pone.0060780.t001

geographical regions to understand the interactions and migrations between different parasite populations.

Further applications of this approach might be to differentiate between parasite recrudescence or re-emergence in selected populations to allow facile decision-making in the face of a very changeable parasite where resistance emerges quickly [7]. With additional evidence provided by other types epidemiological studies to more directly link these parameters to parasite population genetics, changes in the profile of parasites with different molecular barcodes might be used as an indicator of parasite transmission. The finding is also one beneficial outcome of a genomic diversity project undertaken by the malaria community five years ago [2,17,18]. The decreasing cost and increasing translation of sequencing and genotyping tools into clinical environments will make genetic data invaluable for rapidly understanding diverse aspects of infectious disease epidemiology, particularly when such information is combined with population genetic inferences and knowledge of pathogen biology.

Materials and Methods

Study site

We obtained *P. falciparum*-positive clinical samples from patients evaluated at the SLAP clinic in Thiès, Senegal under ethical approval for human subjects and informed consent conditions. Full written consent was obtained in a protocol approved by Harvard School of Public Health, Office of Human Research Administration (P16330-110, Wirth PI) and the Ministry of Health, Senegal.

The site, located 75 km southeast of the country capital of Dakar, is characterized by perennial hypo-endemic transmission with the greatest number of malaria cases by primarily *Anopheles gambiae* s.l and *A. funestus* vectors occurring approximately from September to December, at the end of the rainy season. Samples are collected passively; with patients over the age of 12 months

admitted to this study with self-reported acute fevers within 24 hours of visiting the clinic and no recent anti-malarial use. Patients are screened by slide smears and rapid diagnostic test (RDT) to diagnose *P. falciparum* infection [19,20].

DNA extraction and quantification

Whole blood spots from 2006–2011 were preserved on Whatman FTA filter paper (Whatman catalog #WB120205). We extracted genomic DNA from 4–6 mm punches from the FTA cards using the manufacturer protocol for Promega Maxwell DNA IQ Casework Sample kit (Promega catalog #AS1210). After extraction, we quantified and generated a molecular barcode for each sample as described previously [7]. Extracted samples were excluded from analysis if the concentration (and corresponding parasitemia of the patient) were too low for successful amplification. The sample size in each year is shown in Table S1.

Sequencing csp

We sequenced across the T-epitope region of the *P. falciparum* *csp* gene. Primer sequences were: 5'- AAATGACCCAAACC-GAAATG-3' forward and 5'- TTAAGGAACAAGAAGGATAA-TACCA-3' reverse. We used 1 µl of each sample as a template in 25 µl PCR reactions using iProof master mix (Bio-Rad cat# 172-5310) (initial denaturation 98°C 30 s, followed by 35 cycles of 98°C denaturation (30 s), 55°C annealing (30 s), 72°C extension (30 s), and a final extension of 72°C for 5 min) and sent post-PCR processed samples (exoSAP-IT, usb catalog #78201) for sequencing (Genewiz, Inc., South Plainfield, NJ).

Affymetrix array analysis

Using an Affymetrix array containing 74,656 markers [6], we hybridized parasites with identical barcodes and parasites within the same collection but with different barcodes as well as technical replicates of control strains. We called SNPs using BRLMM-P from Affy Power Tools v1.10.2. Haploid genotypes were forced by designating all SNPs as "Y chromosome" and all individuals as "male". We counted the number of differing SNP genotypes for pairs of arrays, with pairings sorted into three categories: 1) technical replicates (same parasite sample hybridized to two arrays); 2) identical barcodes (distinct patient samples with identical barcodes); and, 3) unrelated parasites (distinct barcodes).

Human Genotyping

We used a set of SNPs selected by The Broad Institute for human typing on their analysis platforms to distinguish patient samples from one another. From an original set of 23 assays, we selected 18 as robust under conditions with low template concentrations. We ran these pre-developed TaqMan-MGB probes (Life Technologies, Inc.) on an Applied Biosystems 7900HT qrt-PCR system (Life Technologies, Inc.) using the

Table 2. Variance effective population size estimated by likelihood approximation.

	Likelihood method	
	Mean	95% Confidence Interval
2006–2007	ND	(226, ND)
2007–2008	19	(9, 49)
2008–2009	29	(12, 90)
2009–2010	18	(9, 42)
2010–2011	10	(6, 18)

*ND represents "Not Determinable".

doi:10.1371/journal.pone.0060780.t002

standard amplification and analysis protocols (see Table S3A for SNP identity and human typing results).

In addition, we sent several samples for STR genotyping on an ABI 3130 Genetic Analyzer to detect the STR alleles amplified using the ABI AmpFISTR Profiler Plus Kits (Life Technologies catalog # 4303326) at the Histocompatibility and Tissue Typing Laboratory, Brigham and Women's Hospital, Boston, MA. See Table S3B for results of this genotyping.

Data Analysis

We excluded from analysis those samples with missing data on more than four SNP positions. We determined that samples with more than one site showing both fluorescent signals in genotyping (indicating that more than one allele were present) were "mixed infections" with more than one genome present in the patient sample. For simplicity, the results we show in the paper are all based on samples with single genome. We also considered mixed infection in the analyses, and the results do not change qualitatively.

We calculated the standardized index of association (I_A^S) by the program LIAN, version 3.5 [10]. The number of re-samplings was set to be 10,000. We assumed there are two generations per year and estimated variance effective population size through temporal changes in allele frequencies by both the moment method [21] and likelihood approximation implemented in program CoNe [22]. We calculated the ratio of parasites persisting between years in each year through dividing the number of barcodes that are shared with other years by the total number of barcodes in a particular year.

Supporting Information

Figure S1 The percent differences between hybridized biological replicates and samples with identical barcodes. Array analysis shows that the percentage of SNP differences between samples with identical barcodes is similar to those seen in biological replicates, suggesting that samples with identical barcodes are nearly genetically identical. (EPS)

Figure S2 Parasitemia variation by year. Kruskal-Wallis rank-sum test indicates variance between years (p-value < 2.2e-16); however, there is no decreasing trend over time. (EPS)

Figure S3 Pairwise differences between two exceptionally prevalent barcodes and other barcodes. The number of pairwise

differences between the exceptionally prevalent barcode and other barcodes is not significantly higher than the number of pairwise differences among all the barcodes in the same year. (EPS)

Figure S4 Changes in allele frequencies between transmission seasons. Each colored line shows the year-to-year variability in allele frequency for each non-fixed SNP. Each colored line shows the year-to-year variability in allele frequency for each non-fixed SNP. Allele frequencies fluctuate substantially across years, suggesting high random genetic drift and low effective population size. (EPS)

Figure S5 Proportion of between-year shared barcodes. Proportion of between-year shared barcodes increased significantly. The error bars show 95% confidence interval of mean (± 1.96 SE). (EPS)

Table S1 The number of mixed and single infections in each year. (XLSX)

Table S2 Variance effective population size. (XLSX)

Table S3 Human genotyping data. A. TaqMan probes from Broad Institute set. B. STR genotyping on an ABI 3130 Genetic Analyzer (XLSX)

Table S4 csp sequences. (XLSX)

Table S5 Complete molecular barcodes for all samples studied. SNP called marked '-' indicate missing data (XLSX)

Acknowledgments

We thank the sample collection team in Senegal, including Younouss Diedhiou, Lamine Ndiaye, Amadou Moutar Mbaye, Baba Dieye, Moussa Dieng Sarr, and Ngayo Sy and the technical staff at the Harvard School of Public Health, including Kate Fernandez.

Author Contributions

Conceived and designed the experiments: RD SKV DLH DFW. Performed the experiments: RD PDS EJJ. Analyzed the data: HHC RD DCP DLH. Contributed reagents/materials/analysis tools: SM DN AKL DVT. Wrote the paper: RD HHC SKV DLH PCS DEN SFS.

References

- World Health Organization (2011) World malaria report 2011. World Health Organization 246. Geneva:
- Volkman SK, Sabeti PC, DeCaprio D, Neafsey DE, Schaffner SF, et al. (2007) A genome-wide map of diversity in *Plasmodium falciparum*. *Nat Genet* 39: 113–119. doi:10.1038/ng1930
- Mzilahowa T, McCall PJ, Hastings IM (2007) "Sexual" Population Structure and Genetics of the Malaria Agent *P. falciparum*. *PLoS ONE* 2: e613. doi:10.1371/journal.pone.0000613.t001
- Anderson TJ, Haubold B, Williams JT, Estrada-Franco JG, Richardson L, et al. (2000) Microsatellite markers reveal a spectrum of population structures in the malaria parasite *Plasmodium falciparum*. *Mol Biol Evol* 17: 1467–1482.
- Neafsey DE, Schaffner SF, Volkman SK, Park D, Montgomery P, et al. (2008) Genome-wide SNP genotyping highlights the role of natural selection in *Plasmodium falciparum* population divergence. *Genome Biol* 9: R171. doi:10.1186/gb-2008-9-12-r171
- Van Tyne D, Park DJ, Schaffner SF, Neafsey DE, Angelino E, et al. (2011) Identification and Functional Validation of the Novel Antimalarial Resistance Locus PF10_0355 in *Plasmodium falciparum*. *PLoS Genet* 7: e1001383. doi:10.1371/journal.pgen.1001383
- Daniels R, Volkman SK, Milner DA, Mahesh N, Neafsey DE, et al. (2008) A general SNP-based molecular barcode for *Plasmodium falciparum* identification and tracking. *Malar J* 7: 223. doi:10.1186/1475-2875-7-223
- Malaria RB (2010) Focus on Senegal—progress and impact series. World Health Organization. Geneva:
- Smith JM, Smith NH, O'Rourke M (1993) How clonal are bacteria?
- Haubold B, Hudson RR (2000) LIAN 3.0: detecting linkage disequilibrium in multilocus data. *Linkage Analysis. Bioinformatics* 16: 847–848.
- Branch OH, Sutton PL, Barnes C, Castro JC, Hussin J, et al. (2011) *Plasmodium falciparum* genetic diversity maintained and amplified over 5 years of a low transmission endemic in the Peruvian Amazon. *Mol Biol Evol* 28: 1973–1986. doi:10.1093/molbev/msq311
- Griffing SM, Mixson-Hayden T, Sridaran S, Alam MT, McCollum AM, et al. (2011) South American *Plasmodium falciparum* after the malaria eradication era: clonal population expansion and survival of the fittest hybrids. *PLoS ONE* 6: e23486. doi:10.1371/journal.pone.0023486
- Nkhoma SC, Nair S, Al-Saai S, Ashley E, McGready R, et al. (2012) Population genetic correlates of declining transmission in a human pathogen. *Mol Ecol*. doi:10.1111/mec.12099
- Roper C, Elhassan IM, Hviid L, Giha H, Richardson W, et al. (1996) Detection of very low level *Plasmodium falciparum* infections using the nested polymerase

- chain reaction and a reassessment of the epidemiology of unstable malaria in Sudan. *Am J Trop Med Hyg* 54: 325–331.
15. Echeverry DF, Nair S, Osorio L, Menon S, Murillo C, et al. (2013) Long term persistence of clonal malaria parasite *Plasmodium falciparum* lineages in the Colombian Pacific region. *BMC Genet* 14: 2. doi:10.1186/1471-2156-14-2
 16. Mobegi VAV, Loua KMK, Ahouidi ADA, Satoguina JJ, Nwakanma DCD, et al. (2012) Population genetic structure of *Plasmodium falciparum* across a region of diverse endemicity in West Africa. *Malar J* 11: 223–223. doi:10.1186/1475-2875-11-223
 17. Jeffares DCD, Pain AA, Berry AA, Cox AVA, Stalker JJ, et al. (2007) Genome variation and evolution of the malaria parasite *Plasmodium falciparum*. *Nat Genet* 39: 120–125. doi:10.1038/ng1931
 18. Mu JJ, Awadalla PP, Duan JJ, McGee KMK, Keebler JJ, et al. (2007) Genome-wide variation and identification of vaccine targets in the *Plasmodium falciparum* genome. *Nat Genet* 39: 126–130. doi:10.1038/ng1924
 19. Ndiaye D, Patel V, Demas A, LeRoux M, Ndir O, et al. (2010) A non-radioactive DAPI-based high-throughput in vitro assay to assess *Plasmodium falciparum* responsiveness to antimalarials—increased sensitivity of *P. falciparum* to chloroquine in Senegal. *Am J Trop Med Hyg* 82: 228–230. doi:10.4269/ajtmh.2010.09-0470
 20. Ndiath MO, Mazenot C, Gaye A, Konate L, Bouganali C, et al. (2011) Methods to collect *Anopheles* mosquitoes and evaluate malaria transmission: a comparative study in two villages in Senegal. *Malar J* 10: 270. doi:10.1186/1475-2875-10-270
 21. Waples RS (1989) A generalized approach for estimating effective population size from temporal changes in allele frequency. *Genetics* 121: 379–391.
 22. Anderson EC (2005) An efficient Monte Carlo method for estimating N_e from temporally spaced samples using a coalescent-based likelihood. *Genetics* 170: 955–967. doi:10.1534/genetics.104.038349