



DIGITAL ACCESS TO SCHOLARSHIP AT HARVARD

Effective Theory of Fermi Pockets in Fluctuating Antiferromagnets

The Harvard community has made this article openly available.
[Please share](#) how this access benefits you. Your story matters.

Citation	Qi, Yang, and Subir Sachdev. 2010. Effective theory of Fermi pockets in fluctuating antiferromagnets. <i>Physical Review B</i> 81(11): 115129.
Published Version	doi:10.1103/PhysRevB.81.115129
Accessed	February 19, 2015 9:10:13 AM EST
Citable Link	http://nrs.harvard.edu/urn-3:HUL.InstRepos:6622985
Terms of Use	This article was downloaded from Harvard University's DASH repository, and is made available under the terms and conditions applicable to Open Access Policy Articles, as set forth at http://nrs.harvard.edu/urn-3:HUL.InstRepos:dash.current.terms-of-use#OAP

(Article begins on next page)

Effective theory of Fermi pockets in fluctuating antiferromagnets

Yang Qi and Subir Sachdev

Department of Physics, Harvard University, Cambridge MA 02138

(Dated: March 1, 2010)

Abstract

We describe fluctuating two-dimensional metallic antiferromagnets by transforming to a rotating reference frame in which the electron spin polarization is measured by its projections along the local antiferromagnetic order. This leads to a gauge-theoretic description of an ‘algebraic charge liquid’ involving spinless fermions and a spin $S = 1/2$ complex scalar. We propose a phenomenological effective lattice Hamiltonian which describes the binding of these particles into gauge-neutral, electron-like excitations, and describe its implications for the electron spectral function across the entire Brillouin zone. We discuss connections of our results to photoemission experiments in the pseudogap regime of the cuprate superconductors.

arXiv:0912.0943v2 [cond-mat.str-el] 1 Mar 2010

I. INTRODUCTION

An understanding of the nature of the electron spectral function in the underdoped ‘pseudogap’ regime has emerged as one of the central problems in the study of the cuprate superconductors. A wealth of data has appeared in photoemission studies, some of which¹⁻⁶ has been interpreted using a model of “Fermi arcs” across the Brillouin zone diagonals; other studies⁷⁻⁹ have indicated the presence of pocket Fermi surfaces in the same region of the Brillouin zone. Scanning tunnelling microscopy (STM) studies¹⁰ also indicate a Fermi arc of excitations which appears to end abruptly at the magnetic Brillouin zone boundary associated with two sublattice Néel order. Another issue of interest in experiments has been the angular dependence of the electronic excitation gap energy in the superconducting state. A ‘dichotomy’ has been noted¹⁰⁻¹³ between the behavior of the gap near the nodal points on the Brillouin zone diagonals, and the antinodal points along the principle axes of the Brillouin zone.

Related studies have also been made of the electronic spectra in the electron-doped cuprates¹⁴⁻¹⁷. Here the spectra seem to be closer to that expected from conventional spin density wave theory, and so constitute an important testing ground of theoretical ideas.

The recent observation of quantum oscillations in a strong magnetic field¹⁸⁻²⁴ has given further impetus to the development of a theory the normal state of the underdoped cuprates. Some of the transport data^{23,25,26} has been interpreted in terms of the presence of electron pockets in the hole-doped cuprates, for which there is no apparent evidence in the photoemission studies; the latter, however, have only been carried out without a magnetic field.

Finally, an important motivation for our study comes from numerical studies²⁷⁻³² of Hubbard-like models for the cuprate superconductors. These studies show a significant regime without any antiferromagnetic order, but with a dichotomy in the normal state electronic spectra between the nodal and anti-nodal regimes. It would clearly be useful to have analytic effective models which can be used to interpret the numerical data, and we shall propose such models here.

The theory we present here builds upon the framework set up in Refs. 33 and 34. These papers described a non-Fermi liquid state which was labeled an ‘algebraic charge liquid’ (ACL); this state was obtained after the loss of antiferromagnetic order in a metal via an unconventional transition³⁵. As we will review below, in its simplest realization, the degrees of freedom of the ACL are spinless fermions and a $S = 1/2$ complex boson z_α which interact via an emergent $U(1)$ gauge force. This gauge force has strong effects even in possible deconfined phases, and can lead to the formation of electron-like bound states between the fermions and z_α . The main purpose of this paper is to present a general discussion of the dynamics of these fermionic bound states, and their influence on the photoemission spectra. A full description of the pseudogap regime in the hole-doped cuprates will also require³⁶ considerations of pairing of these fermionic bound states into bosonic Cooper pairs: this we defer to a subsequent paper.

In our previous work^{33,34}, we presented analytic arguments based upon the structure of a continuum theory valid at long wavelengths. Here, we shall present a more general formulation of the theory, which allows computation of the electronic spectrum across the entire Brillouin zone. We shall show how arguments based upon symmetry and gauge invariance allow construction of an effective theory for the electronic spectrum. The theory will contain a number of coupling constants, whose values will have to be determined by comparing to numerical studies or experiments. Also, while the previous work^{33,34} used strong-coupling perspective, starting from the Schwinger boson theory of the antiferromagnet. It is possible to derive the results presented below also from this strong-coupling approach. However, we will choose to present our results by departing³⁷ from the “spin-fermion” model, which was originally developed from the weak coupling expansion.

Let us begin by defining the Lagrangian, \mathcal{L}_{sf} , of the spin-fermion model.³⁸ We consider fermions $c_{i\alpha}$ ($\alpha, \beta = \uparrow, \downarrow$) hopping on the sites of a square lattice. These are coupled to the fluctuations of the unit vector field n_i^a ($a = x, y, z$) representing the local orientation of the collinear antiferromagnetic Néel order. We will restrict our attention here to antiferromagnetic order at wavevector $\mathbf{K} = (\pi, \pi)$, although generalizations to other \mathbf{K} are possible. Throughout, we will freely make a gradient expansion of n_i^a over spatial co-ordinates $r = (x_i, y_i)$, focusing on the long wavelength fluctuations of the order parameter. However, the fermion fields $c_{i,\alpha}$ have important low energy modes at many locations in the Brillouin zone, and so we will not make any gradient expansion on the fermion operators. We have the imaginary time (τ) Lagrangian

$$\begin{aligned}
\mathcal{L}_{sf} &= \mathcal{L}_c + \mathcal{L}_\lambda + \mathcal{L}_n \\
\mathcal{L}_c &= \sum_i c_{i\alpha}^\dagger (\partial_\tau - \mu) c_{i\alpha} - \sum_{i<j} t_{ij} \left(c_{i\alpha}^\dagger c_{j\alpha} + c_{j\alpha}^\dagger c_{i\alpha} \right) \\
\mathcal{L}_\lambda &= -\lambda \sum_i (-1)^{x_i+y_i} n_i^a c_{i\alpha}^\dagger \sigma_{\alpha\beta}^a c_{i\beta} \\
\mathcal{L}_n &= \frac{1}{2g} \int d^2r \left[(\partial_\tau n^a)^2 + v^2 (\partial_r n^a)^2 \right].
\end{aligned} \tag{1.1}$$

Here t_{ij} are arbitrary hopping matrix elements describing the “large” Fermi surface, μ is the chemical potential, λ is the spin-fermion coupling, g controls the strength of the antiferromagnetic fluctuations, σ^a are the Pauli matrices, and the n^a field obeys the local constraint $\sum_a (n^a)^2 = 1$. Almost all previous studies of the spin-fermion model³⁸ have involved a perturbative treatment in powers of the coupling λ , along with resummations of this expansion. Here, we will not expand in powers of λ , treating it is a coupling of order unity: instead our analysis are motivated by expansions either in the number of field components, or by small g .

For sufficiently small values of the coupling g , the model \mathcal{L}_{sf} clearly has an antiferromagnetically ordered spin density wave (SDW) ground state with $\langle n^a \rangle \neq 0$. We are interested here in the mechanism by which this order is lost as g is increased, and a metallic state with

no broken symmetries is obtained. In a recent paper³⁷ with others, we argued that there were 2 generic possibilities:

(i) In the first case, there was a direct transition at a single critical $g = g_c$ to a Fermi liquid metal with a large Fermi surface. This transition has been examined in previous work³⁸, and is directly expressed in terms of fluctuations of the O(3) order parameter n^a ; the $T > 0$ crossovers above $g = g_c$ have also been described²⁷⁻³¹.

(ii) The second possibility involved intermediate non-Fermi liquid phases before the large Fermi surface metal was reached at sufficiently large g . In this case, the O(3) order parameter was parameterized in terms of the spinor z_α by

$$n_i^a = z_{i\alpha}^* \sigma_{\alpha\beta}^a z_{i\beta}. \quad (1.2)$$

The spinor field z_α is the natural variable to describe the loss of magnetic order at $g = g_c$, and the non-Fermi liquid phases above g_c , and replaces the O(3) order parameter n^a .

Our focus in the present paper will be on the second possibility. Part of our motivation comes from transport measurements^{39,40}, which show an extended regime of non-Fermi liquid behavior as $T \rightarrow 0$ in high magnetic fields. We shall describe the photoemission spectra at non-zero temperatures on both sides of g_c . Our $g \geq g_c$ results are candidates for the pseudogap regime of the cuprates, and relate especially to recent experimental results of Meng *et al.*⁹.

To complement the approach taken in Ref. 37, here we will motivate our choice of the non-magnetic non-Fermi liquid phases by extending the theory³⁵ of the loss of Néel order in the insulator at half filling. Although motivated in a theory of metals, \mathcal{L}_{sf} also contains (in principle) a complete description of the insulating states at half-filling. Crucial to the description of insulators,^{41,42} are ‘hedgehog’ point tunneling events (‘instantons’) in which n^a points radially outwards/inwards from a spacetime point. These hedgehogs carry Berry phases: in \mathcal{L}_{sf} the Berry phases are expected to appear from the determinant of the gapped fermions integrated out in a hedgehog field for n^a . All previous treatments of the spin-fermion model have neglected the hedgehog Berry phases, and this may well be appropriate under suitable circumstances in certain superconducting states.⁴³

In this paper, we wish to focus on regimes and phases where the hedgehog tunnelling events are suppressed. In the insulator, the hedgehog suppression is a consequence of quantum interference from the hedgehog Berry phases, and leads to interesting new ‘deconfined’ phases and critical points.^{35,44,45} Hedgehog suppression is also possible in certain exotic metallic states (to be described below), where fermionic excitations near a Fermi surface lead to a divergence in the hedgehog action.^{33,34,43,46,47}

It is useful to begin our analysis by adapting the phase diagram of Ref. 33 describing the doping of an insulating deconfined critical point – see Fig. 1. In the insulator, at $x = 0$, the transition is between a Néel state and a valence bond solid.⁴² This transition is described³⁵ by a deconfined critical point, with the order parameter n^a replaced by a complex ‘relativistic’

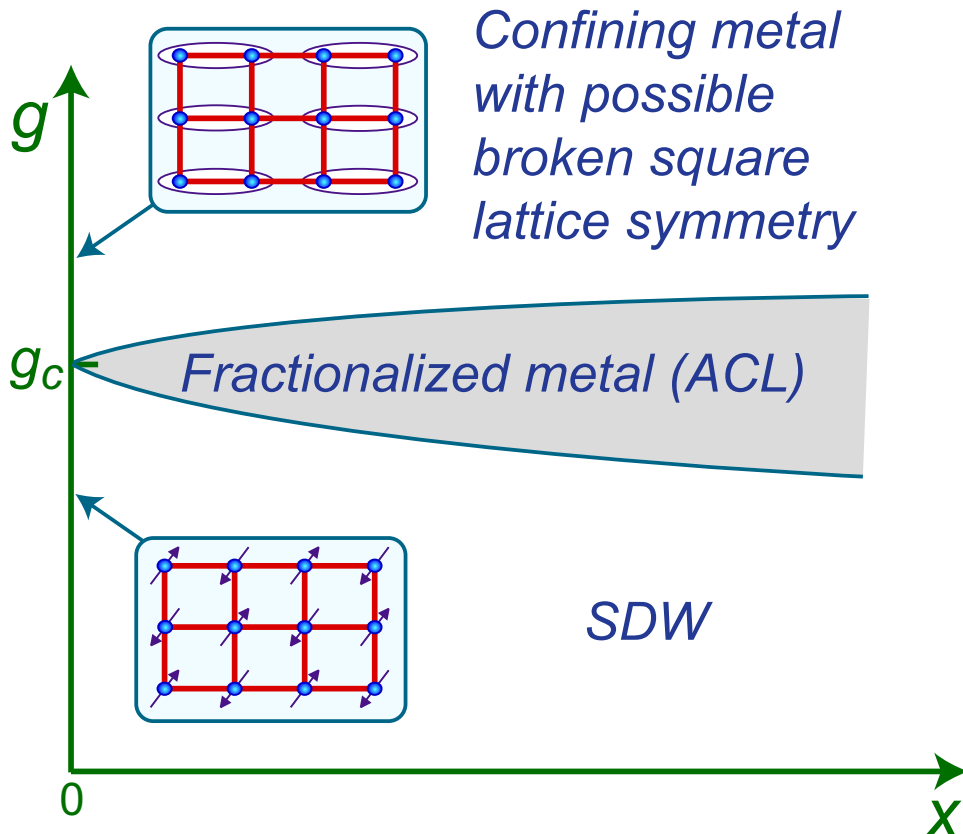


FIG. 1. Proposed phase diagram³³ of a quantum antiferromagnet doped with carrier density x . The strength of antiferromagnetic fluctuations in the insulator is controlled by the coupling g . At $x = 0$, there is a deconfined critical point³⁵, separating a Néel state and a valence bond solid⁴². The broken symmetries in these two states survive in metallic Fermi liquid state at non-zero x . More importantly, the deconfined critical point broadens into a non-Fermi liquid phase, the algebraic charge liquid (ACL), which is the focus of attention in the present paper. The conventional large Fermi surface Fermi liquid is not shown in the phase diagram above. It appears at larger x , and its phase transitions to the ACL and the SDW states were discussed in earlier work³⁷.

boson z_α which carries charges under an emergent U(1) gauge field A_μ : this mapping will be reviewed in Section II. Upon moving away from the insulator, the fermions c_α are replaced by fermions ψ_p fermions which do not carry spin, but do carry charge $p = \pm 1$ of the U(1) gauge field A_μ . We will present the Lagrangian of z_α, ψ_p, A_μ which described the phase diagram in Fig. 1 in Section II.

In the SDW phase of Fig. 1, the z_α, ψ_p, A_μ theory is formally identical to the spin-fermion model of c_α, n^a . This is because hedgehogs are strongly suppressed when there is magnetic order. We explore this connection in Appendix A, and in Section IV to obtain the spectral functions of the electrons in the ‘renormalized classical’ (RC) regime^{49,50}.

The transition out of the SDW phase in Fig. 1 is into a fractionalized metal phase, which was dubbed³⁴ an algebraic charge liquid (ACL). This transition is in the O(4) universality

class.⁴³ To leading order, the elementary excitations of the ACL are simply the constituent fractionalized fields z_α , ψ_p , A_μ , and their interactions have been discussed in previous work.⁴³

Here, our primary results will be on the fermionic spectrum over a large intermediate length scale near the boundary between the ACL and the confining metallic states shown in Fig. 1. A key characteristic of the deconfined critical point is parametrically large separation between the spin correlation length, ξ , and the confinement scale, ξ_{conf} , at which hedgehogs proliferate. In the doped system, as argued in Ref. 33, the fractionalized excitations are already bound into gauge neutral excitations at the scale ξ . Among these bound states are electron-like fermions which carry charge $-e$ and spin $1/2$, and so can be directly detected in photoemission experiments. We will present a phenomenological effective Hamiltonian for these excitations in Section III.

II. U(1) GAUGE THEORY

The basic idea³⁷ of the mapping to the theory of the ACL is to transform to a new set of fermions, ψ_{ip} with $p = \pm 1$, with their spin components p polarized along the direction of the local SDW order. We perform this rotation with the spacetime dependent SU(2) matrix $R_{\alpha p}^i$ so that^{50,51}

$$c_{i\alpha} = R_{\alpha p}^i \psi_{ip} \quad (2.1)$$

We choose $R_{\alpha p}$ so that spin-fermion coupling is only along σ^z , and so

$$n_i^a R_{p\alpha}^{i\dagger} \sigma_{\alpha\beta}^a R_{\beta p'}^i = \sigma_{pp'}^z = p \delta_{pp'} \quad (2.2)$$

This relationship is equivalent to

$$n_i^a = \frac{1}{2} \text{Tr} (\sigma^a R^i \sigma^z R^{i\dagger}) \quad (2.3)$$

Now, we parameterize

$$R^i = \begin{pmatrix} z_{i\uparrow} & -z_{i\downarrow}^* \\ z_{i\downarrow} & z_{i\uparrow}^* \end{pmatrix} \quad (2.4)$$

with $\sum_\alpha |z_{i\alpha}|^2 = 1$. We can verify that Eq. (2.3) yields the usual relation in Eq. (1.2).

A crucial feature of the resulting Hamiltonian for the ψ_{ip} and $z_{i\alpha}$ is that it is invariant under a local U(1) gauge transformation. This follows from the invariance of Eqs. (2.1) and (1.2) under the transformation

$$\begin{aligned} z_{i\alpha} &\rightarrow z_{i\alpha} e^{i\vartheta_i} \\ \psi_{ip} &\rightarrow \psi_{ip} e^{-ip\vartheta_i} \end{aligned} \quad (2.5)$$

where ϑ_i has an arbitrary dependence on space and time. Note that the ψ_{ip} carry opposite charges $p = \pm 1$ under the U(1) gauge transformation (which is unrelated to the gauge invariance associated with the physical electromagnetic force). Associated with this U(1) gauge invariance, we will introduce an internal dynamical gauge field A_μ in constructing the effective theory.

Ref. 37 argued that describing the transition to the large Fermi surface Fermi liquid required the inclusion of additional degrees of freedom so that the theory had a SU(2) gauge invariance. We will not consider this extension here. However, we expect that simple extensions of the results in Section III apply also to the SU(2) ACL phases found in Ref. 37.

We can now insert Eqs. (2.1) and (1.2) into Eqs. (1.1) and obtain the theory of fluctuating Fermi pockets. We will assume that the $z_{i\alpha}$ are slowly varying, but allow the fermion fields ψ_{ip} to have an arbitrary dependence on spacetime. The complete Lagrangian is written as

$$\mathcal{L}_{acl} = \mathcal{L}_z + \mathcal{L}_\psi + \mathcal{L}_{ss} \quad (2.6)$$

The first term is the CP¹ model for the z_α :

$$\mathcal{L}_z = \frac{2}{g} [|(\partial_\tau - iA_\tau)z_\alpha|^2 + v^2 |(\nabla - i\mathbf{A})z_\alpha|^2] \quad (2.7)$$

The fermion hopping term in Eq. (1.1) yields some interesting structure; it can be written as

$$\begin{aligned} - \sum_{i < j} t_{ij} & \left[(z_{i\alpha}^* z_{j\alpha}) \left(\psi_{i+}^\dagger \psi_{j+} + \psi_{j-}^\dagger \psi_{i-} \right) \right. \\ & + (z_{j\alpha}^* z_{i\alpha}) \left(\psi_{i-}^\dagger \psi_{j-} + \psi_{j+}^\dagger \psi_{i+} \right) \\ & + (\varepsilon^{\alpha\beta} z_{j\alpha}^* z_{i\beta}^*) \left(\psi_{i+}^\dagger \psi_{j-} - \psi_{j+}^\dagger \psi_{i-} \right) \\ & \left. + (\varepsilon^{\alpha\beta} z_{i\alpha} z_{j\beta}) \left(\psi_{i-}^\dagger \psi_{j+} - \psi_{j-}^\dagger \psi_{i+} \right) \right] \quad (2.8) \end{aligned}$$

Now, from the derivation of the CP¹ model we know that

$$z_{i\alpha}^* z_{j\alpha} \approx e^{iA_{ij}} \quad (2.9)$$

and this is easily incorporated into the first two terms in Eq. (2.8), yielding terms which are gauge invariant. We therefore incorporate the first two terms in Eq. (2.8) into the

gauge-invariant Lagrangian

$$\begin{aligned} \mathcal{L}_\psi = & \sum_{p=\pm 1} \sum_i \psi_{ip}^\dagger (\partial_\tau + ipA_\tau - \mu - \lambda p(-1)^{i_x+i_y}) \psi_{ip} \\ & - \sum_{p=\pm 1} \sum_{i<j} t_{ij} \left(e^{ipA_{ij}} \psi_{ip}^\dagger \psi_{jp} + e^{-ipA_{ij}} \psi_{jp}^\dagger \psi_{ip} \right) \end{aligned} \quad (2.10)$$

For $A_\mu = 0$, \mathcal{L}_ψ describes the band structure in terms of the Fermi pockets. The interactions arise from the minimal coupling to the A_μ gauge field. Finally, we need to consider the last two terms in Eq. (2.8). These are the analog of the ‘Shraiman-Siggia’ couplings.⁴⁸ Combining these terms with the analogous terms arising from the time derivative of the c_α , we obtain to leading order in the derivative of the z_α :

$$\begin{aligned} \mathcal{L}_{ss} = & \int_{\mathbf{k}, \mathbf{p}, \mathbf{q}} \left[\mathbf{p} \cdot \frac{\partial \varepsilon(\mathbf{k})}{\partial \mathbf{k}} \right] z_\downarrow(\mathbf{q} - \mathbf{p}/2) z_\uparrow(\mathbf{q} + \mathbf{p}/2) \psi_-^\dagger(\mathbf{k} + \mathbf{q}) \psi_+(\mathbf{k} - \mathbf{q}) + \text{c.c.} \\ & + \sum_i (z_{i\uparrow} \partial_\tau z_{i\downarrow} - z_{i\downarrow} \partial_\tau z_{i\uparrow}) \psi_{i-}^\dagger \psi_{i+} + \text{c.c.} \end{aligned} \quad (2.11)$$

where $\varepsilon(\mathbf{k})$ is the single particle dispersion of the large Fermi surface state:

$$\varepsilon(\mathbf{k}) = - \sum_j t_{ij} e^{i\mathbf{k} \cdot (\mathbf{r}_j - \mathbf{r}_i)}. \quad (2.12)$$

Note that the terms in \mathcal{L}_{ss} mix fermions with different A_μ charges.

The analysis in the following Section III will be based largely on symmetry, and so it is useful to recall^{33,52} now how the fields introduced so far transform under symmetry operations. These are summarized in Table I.

III. EFFECTIVE THEORY OF ELECTRONS AND PHOTONS

As discussed in Section I, we want to work in the regime where the photon creates bound states between the ψ fermions and the z_α spinons, but the monopole induced confinement has not yet occurred. Thus we are in a fluctuating SDW state with a spin correlation length ξ , but we are interested in phenomena at a scale larger than ξ . However, the confinement of the photons occurs at a scale ξ_{conf} , and so we will restrict ourselves to the $\xi < r < \xi_{\text{conf}}$.

We also note the complementary considerations in the work of Wen and Lee⁵³: they considered a spin liquid model with fermionic spinons and bosonic holons (in contrast to our bosonic spinons and spinless fermion charge carriers), and described spinon-holon bound states in the electron spectral functions. Also, Essler and Tsvelik^{54,55} described a model of weakly coupled chains, and considered the bound states of the spinons and holons of the one-dimensional spin liquid on the chains. In our approach, we do not appeal to these spin liquid states, but deal instead with states motivated by the fluctuations in the observed spin

	T_x	$R_{\pi/2}^{\text{dual}}$	I_x^{dual}	\mathcal{T}
z_α	$\epsilon_{\alpha\beta} z^{\beta*}$	$\epsilon_{\alpha\beta} z^{\beta*}$	$\epsilon_{\alpha\beta} z^{\beta*}$	$\epsilon_{\alpha\beta} z^{\beta*}$
ψ_+	$-\psi_-$	$-\psi_-$	$-\psi_-$	ψ_+^\dagger
ψ_-	ψ_+	ψ_+	ψ_+	ψ_-^\dagger
A_τ	$-A_\tau$	$-A_\tau$	$-A_\tau$	A_τ
A_x	$-A_x$	$-A_y$	A_x	$-A_x$
A_y	$-A_y$	A_x	$-A_y$	$-A_y$
n^a	$-n^a$	$-n^a$	$-n^a$	$-n^a$
F_α	G_α	G_α	G_α	$\epsilon^{\alpha\beta} F_\beta^\dagger$
G_α	F_α	F_α	F_α	$\epsilon^{\alpha\beta} G_\beta^\dagger$

TABLE I. Transformations of the lattice fields under square lattice symmetry operations. T_x : translation by one lattice spacing along the x direction; $R_{\pi/2}^{\text{dual}}$: 90° rotation about a dual lattice site on the plaquette center ($x \rightarrow y, y \rightarrow -x$); I_x^{dual} : reflection about the dual lattice y axis ($x \rightarrow -x, y \rightarrow y$); \mathcal{T} : time-reversal, defined as a symmetry (similar to parity) of the imaginary time path integral. Note that such a \mathcal{T} operation is not anti-linear. The transformations of the Hermitian conjugates are the conjugates of the above, except for time-reversal of fermions⁵². For the latter, ψ_\pm and ψ_\pm^\dagger are treated as independent Grassman numbers and $\mathcal{T} : \psi_\pm^\dagger \rightarrow -\psi_\pm$; similarly for F_α, G_α .

density wave order.

The regime $\xi < r < \xi_{\text{conf}}$ was treated in Section IV of Ref. 33. See also the subsection on holon-spinon binding in the Appendix of Ref. 34. Here we shall provide a more general treatment, which should also allow for a computation of spectral functions.

Let the bound state between the ψ_+ fermions and the z_α be F_α . The bound state should have the full symmetry of the square lattice, and so we can define a local operator $F_{i\alpha}$, which creates this bound state centered at the lattice site i .

As was emphasized in the initial analysis³³, there is a second independent bound state, and a consequent doubling of the fermion species. This is the bound state between the ψ_- and z_α^* , which we denote by the local operator $G_{i\alpha}$. In the ordered Néel state, the sublattice location of a fermion also fixes its spin. However, when we move to length scales larger than ξ , this is no longer the case because the spin direction of the background Néel state has been averaged over. Thus we can view F_α and G_α as fermions that reside preferentially (but

not exclusively) on the two sublattices, and they separately have an additional degeneracy associated with carrying $S = 1/2$.

More formally, all we will really need are the properties of F_α and G_α under the square lattice symmetry operations: these are summarized in Table I, and will form the bases of our analysis below.

The bare electron operator will have a non-zero overlap with both the F_α and G_α fermions. This will be non-local over the scale ξ . We approximate this connection from Eq. (2.1) as

$$\begin{aligned} c_{i\alpha} &= z_{i\alpha}\psi_{i+} - \epsilon_{\alpha\beta}z_\beta^*\psi_{i-} \\ &\approx Z(F_{i\alpha} + G_{i\alpha}) \end{aligned} \quad (3.1)$$

where Z is some quasiparticle renormalization factor depending upon the fermion-spinon bound state wavefunction. In general, Z should be non-local over a scale ξ , but have limited ourselves for simplicity to a momentum independent wavefunction renormalization. Note that Eq. (3.1) and the symmetry transformations in Table I ensure that c_α is invariant under all operations of the square lattice symmetry. The possible non-local terms in Eq. (3.1) can be deduced by the requirements of symmetry.

We now need an effective Hamiltonian for the $F_{i\alpha}$ and $G_{i\alpha}$. Formally, any Hamiltonian which is invariant under the symmetry transformations of Table I is acceptable; however, we use simple physical requirements to restrict the large class of possibilities. For the diagonal terms which do not mix the F and G , we assume (for simplicity) that they just inherit the terms for ψ_+ and ψ_- in \mathcal{L}_ψ in Eq. (2.10). The mixing between the F and G is provided by the Shraiman-Siggia term \mathcal{L}_{ss} . Physically this can be understood as the mixing corresponds to hopping between two sublattices (as F and G reside preferentially on different sublattices), and Shraiman-Siggia term describes such hopping and associated spin-flipping process⁴⁸. These terms are more simply considered in their real space form which are the last two terms in Eq. (2.8). Combining these terms, we have the effective Hamiltonian

$$\begin{aligned} H_{\text{eff}} &= - \sum_{ij} t_{ij} \left(F_{i\alpha}^\dagger F_{j\alpha} + G_{i\alpha}^\dagger G_{j\alpha} \right) - \lambda \sum_i (-1)^{i_x+i_y} \left(F_{i\alpha}^\dagger F_{i\alpha} - G_{i\alpha}^\dagger G_{i\alpha} \right) \\ &\quad - \sum_{ij} \tilde{t}_{ij} \left(F_{i\alpha}^\dagger G_{j\alpha} + G_{i\alpha}^\dagger F_{j\alpha} \right) \end{aligned} \quad (3.2)$$

where the second line comes from \mathcal{L}_{ss} . Here t_{ij} and \tilde{t}_{ij} are renormalized in some unknown manner from the bare hopping matrix elements in \mathcal{L}_{sf} . We can now verify that all the terms above are invariant under the transformations in Table I.

The above Hamiltonian of bound state can be diagonalized in momentum space. First,

rewrite equation (3.2) in momentum space

$$H_{\text{eff}} = \sum_{\mathbf{k}} (\varepsilon(\mathbf{k}) - \mu) \left(F_{\mathbf{k}\alpha}^\dagger F_{\mathbf{k}\alpha} + G_{\mathbf{k}\alpha}^\dagger G_{\mathbf{k}\alpha} \right) + \sum_{\mathbf{k}} \tilde{\varepsilon}(\mathbf{k}) \left(F_{\mathbf{k}\alpha}^\dagger G_{\mathbf{k}\alpha} + G_{\mathbf{k}\alpha}^\dagger F_{\mathbf{k}\alpha} \right) - \lambda \left(F_{\mathbf{k}\alpha}^\dagger F_{\mathbf{k}+\mathbf{K},\alpha} - G_{\mathbf{k}\alpha}^\dagger G_{\mathbf{k}+\mathbf{K},\alpha} \right) \quad (3.3)$$

where we parameterize $\varepsilon(\mathbf{k})$ and $\tilde{\varepsilon}(\mathbf{k})$ as

$$\varepsilon(\mathbf{k}) = -2t(\cos k_x + \cos k_y) + 4t' \cos k_x \cos k_y - 2t''(\cos 2k_x + \cos 2k_y) \quad (3.4)$$

$$\tilde{\varepsilon}(\mathbf{k}) = -\tilde{t}_0 - 2\tilde{t}(\cos k_x + \cos k_y) + 4\tilde{t}' \cos k_x \cos k_y - 2\tilde{t}''(\cos 2k_x + \cos 2k_y) \quad (3.5)$$

Here t , t' and t'' are nearest neighbor, next nearest neighbor and next-next-nearest neighbor hopping t_{ij} respectively. \tilde{t} , \tilde{t}' and \tilde{t}'' are the hopping elements of \tilde{t}_{ij} . Here we only included terms up to third nearest neighbor hopping, which is capable to capture the shape of the Fermi surface, but higher order terms can be included in a similar fashion. \tilde{t}_0 is the matrix element of the on-site mixing term $F_i^\dagger G_i + G_i^\dagger F_i$, which is also allowed by symmetry.

To diagonalize Hamiltonian (3.3), we change basis to

$$C_{\mathbf{k}\alpha} = \frac{1}{\sqrt{2}}(F_{\mathbf{k}\alpha} + G_{\mathbf{k}\alpha}), \quad D_{\mathbf{k}\alpha} = \frac{1}{\sqrt{2}}(F_{\mathbf{k}+\mathbf{K},\alpha} - G_{\mathbf{k}+\mathbf{K},\alpha}) \quad (3.6)$$

Note that $D_{\mathbf{k}\alpha}$ has momentum \mathbf{k} according to the transformation under translation symmetry listed in Table I. In the new basis, the Hamiltonian becomes

$$H_{\text{eff}} = \sum_{\mathbf{k}} \left[(\varepsilon(\mathbf{k}) + \tilde{\varepsilon}(\mathbf{k}) - \mu) C_{\mathbf{k}\alpha}^\dagger C_{\mathbf{k}\alpha} + (\varepsilon(\mathbf{k} + \mathbf{K}) - \tilde{\varepsilon}(\mathbf{k} + \mathbf{K}) - \mu) D_{\mathbf{k}\alpha}^\dagger D_{\mathbf{k}\alpha} - \lambda \left(C_{\mathbf{k}\alpha}^\dagger D_{\mathbf{k}\alpha} + D_{\mathbf{k}\alpha}^\dagger C_{\mathbf{k}\alpha} \right) \right] \quad (3.7)$$

The spectrum of electron operator c can be obtained by diagonalizing the Hamiltonian of C and D fermions, as c is related to C operator according to equation (3.1) $c_{\mathbf{k}\alpha} \simeq (Z/\sqrt{2})C_{\mathbf{k}\alpha}$. In the Hamiltonian (3.7), C and D fermions have dispersions $\varepsilon(\mathbf{k}) + \tilde{\varepsilon}(\mathbf{k})$ and $\varepsilon(\mathbf{k} + \mathbf{K}) - \tilde{\varepsilon}(\mathbf{k} + \mathbf{K})$ respectively, and they are mixed through the λ term. With the mixing, gaps will open where the Fermi surfaces of C and D fermions intersect and the large Fermi surfaces become Fermi pockets. In the case of $\tilde{\varepsilon}(\mathbf{k}) = 0$, the D Fermi surface is the same as the C Fermi surface shifted by (π, π) ; so the pockets are symmetric under reflection with respect to the magnetic Brillouin zone boundary, and therefore centered at $(\pi/2, \pi/2)$. However, with a non-vanishing $\tilde{\varepsilon}(\mathbf{k})$, the dispersions of C and D are different, so the pockets are no longer symmetric about the magnetic Brillouin zone boundary, and are not necessarily centered at $(\pi/2, \pi/2)$.

To show the qualitative effects of $\tilde{\varepsilon}$ on the shape of Fermi pockets, we draw the pockets and electron spectrum functions of some representative choice of $\tilde{\varepsilon}$ in Figs. 2-5. The dispersion $\varepsilon(\mathbf{k})$ is chosen with some phenomenological parameters $t' = 0.15t$ and $t'' = -0.5t'$, and the

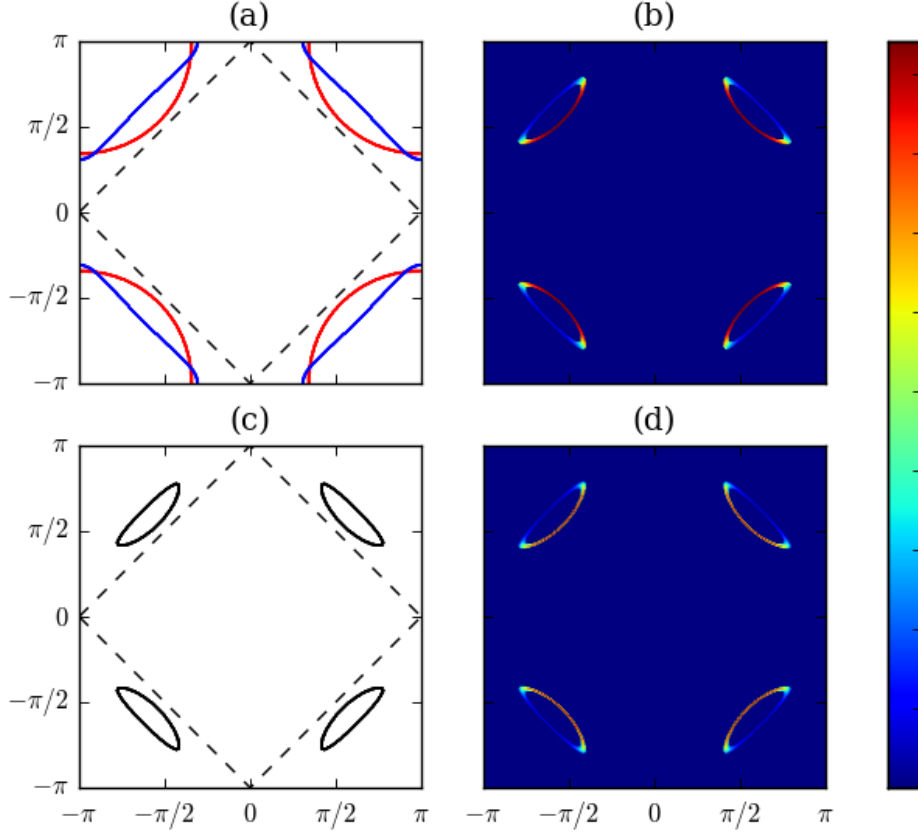


FIG. 2. Plot of Fermi pockets of the bound state with $\tilde{\varepsilon}(\mathbf{k}) = 0.8t$. Subplot (a) shows the Fermi surface of $C_{\mathbf{k}\alpha}$ and $D_{\mathbf{k}\alpha}$ fermions as if there is no mixing term λ in the Hamiltonian (3.7). The red line is $C_{\mathbf{k}\alpha}$ and the blue one is $D_{\mathbf{k}\alpha}$. Subplot (c) shows pockets like Fermi surface of the quasiparticles described by the Hamiltonian (3.7) with $\lambda = 0.3t$. Subplot (b) shows the same Fermi surface with the color representing the weight of electron operator in the quasiparticle excitation. Subplot (d) shows the same information as in (b), but by plotting the electron spectral weight at $\omega = 0$ as a function of momentum; in this plot we manually put in a finite life-time of electron $\tau \sim 0.2t$ just for visualization purpose. The dashed line in (a) and (c) is the boundary of magnetic Brillouin zone in the ordered state.

SDW gap λ is $0.3t$ in Figs. 2-4 and $0.5t$ in Fig. 5. In Fig. 2, a negative \tilde{t}_0 shifts the hole pockets outwards, and makes the shape of the hole pockets asymmetric. The inner side becomes more curved and the outer side more flat. In Fig. 3, a negative \tilde{t} does not shift the position of the hole pockets significantly, but also makes the shape of the hole pockets asymmetric in a similar way as in Fig. 2. Combining the effect of these two parameters, we can move the hole pockets inward and make their inner side more curved than the outer side with a position \tilde{t}_0 and a negative \tilde{t} , as shown in Fig. 4. Along the Fermi pockets, the fermionic quasiparticles are a mixture of $C_{\mathbf{k}\alpha}$ and $D_{\mathbf{k}\alpha}$ fermions, while experiments only probe electron spectrum weight. The weight of electron operator in the quasiparticle is

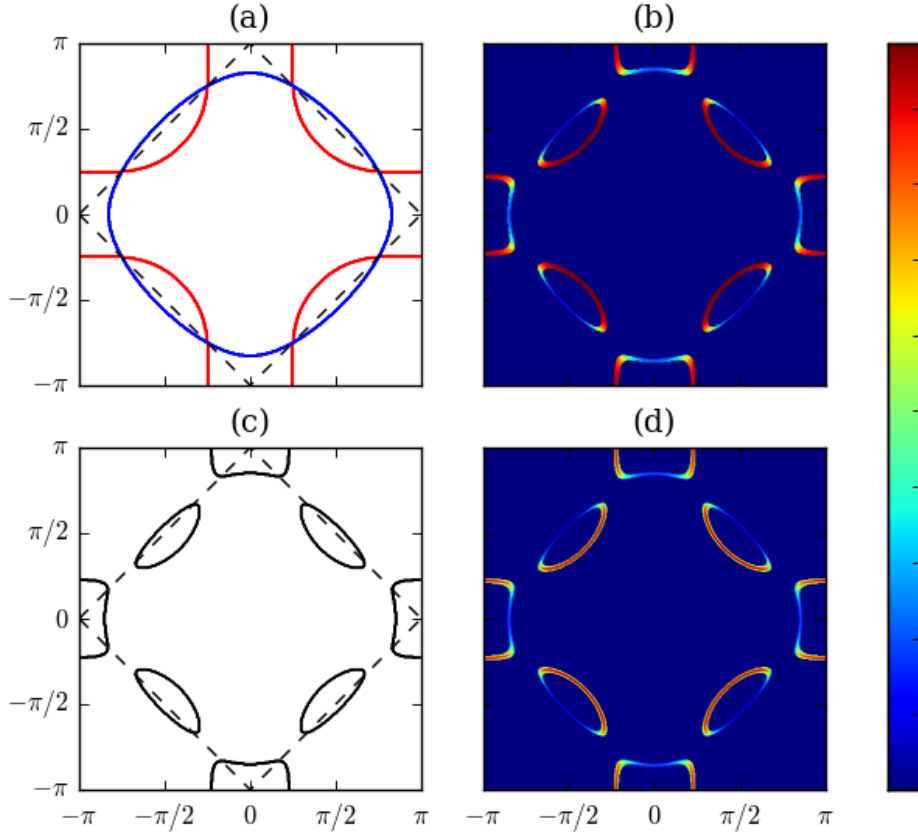


FIG. 3. As in Fig. 2 but with $\tilde{\varepsilon}(\mathbf{k}) = 0.5t(\cos k_x + \cos k_y)$ and $\lambda = 0.3t$.

calculated through diagonalizing equation (3.7) and are plotted in Fig. 2-4. In Fig. 5, we show a plot with larger λ ($\lambda = 0.5t$) so that the anti-nodal electron pocket is completely gapped. In all the cases, the inner half of the hole pockets have higher electron quasiparticle weight, since the inner part is primarily made of $C_{\mathbf{k}\alpha}$ fermion and the outer part is primarily made of $D_{\mathbf{k}\alpha}$ fermion, and electron operator is proportional to $C_{\mathbf{k}\alpha}$.

This bound state theory can be compared to the Yang, Rice, and Zhang (YRZ) model of hole pockets⁵⁷⁻⁵⁹. In their theory a phenomenological Green's function for the electron in the underdoped state is proposed, based upon "spin liquid" physics, and the spectral function derived from the Green's function has hole pockets inside the diamond Brillouin zone. From our Hamiltonian (3.7), the Green's function of the electron is

$$G^e(\mathbf{k}, \omega) = \frac{Z^2}{\omega - \varepsilon(\mathbf{k}) - \tilde{\varepsilon}(\mathbf{k}) + \mu + \lambda^2 / (\omega - \varepsilon(\mathbf{k} + \mathbf{K}) + \tilde{\varepsilon}(\mathbf{k} + \mathbf{K}) + \mu)} \quad (3.8)$$

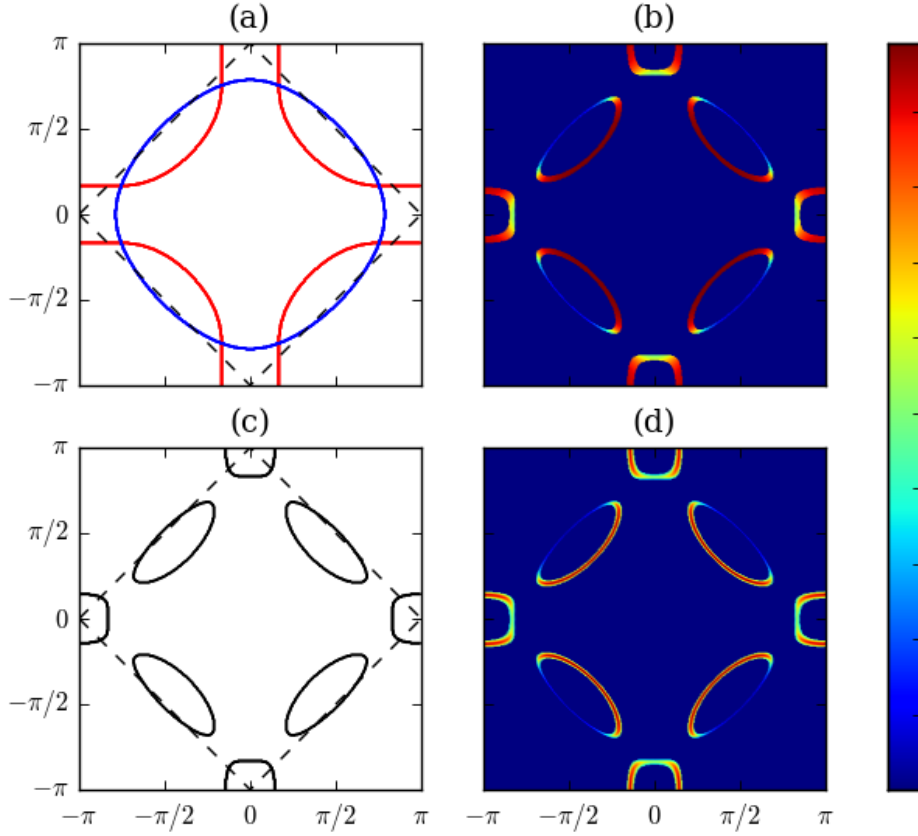


FIG. 4. As in Fig. 2 but with $\tilde{\varepsilon}(\mathbf{k}) = -0.3t + 0.5t(\cos k_x + \cos k_y)$ and $\lambda = 0.3t$.

Compare this to the Green's function in the YRZ model⁵⁷⁻⁵⁹:

$$G(\mathbf{k}, \omega) = \frac{g_t}{\omega - \xi(k) - \Delta_k^2 / [\omega + \xi_0(k)]}. \quad (3.9)$$

The two results are quite similar. In the present form, instead of the d -wave gap Δ_k , our λ does not have a momentum dependence. However, this distinction is an artifact of the simple choices made in our form of H_{eff} : we can clearly include more non-local mixing between the F and G fermions.

The more important distinction between our model and YRZ lies in the physical input in the fermion spectrum. The YRZ model relies on ‘pairing correlations’ implicit in some underlying spin liquid state. In contrast, we do not assume any pairing, but fluctuating local antiferromagnetic order. We will describe the influence of pairing on our spectral functions in a future paper. We note earlier arguments³⁶ that the pairing amplitudes are especially strong on the electron pockets, and this may be a contributing factor to removing the electron-like Fermi surfaces in Figs. 3 and 4.

Recent ARPES experiments⁹ reveal that there are hole pockets in the underdoped regime,

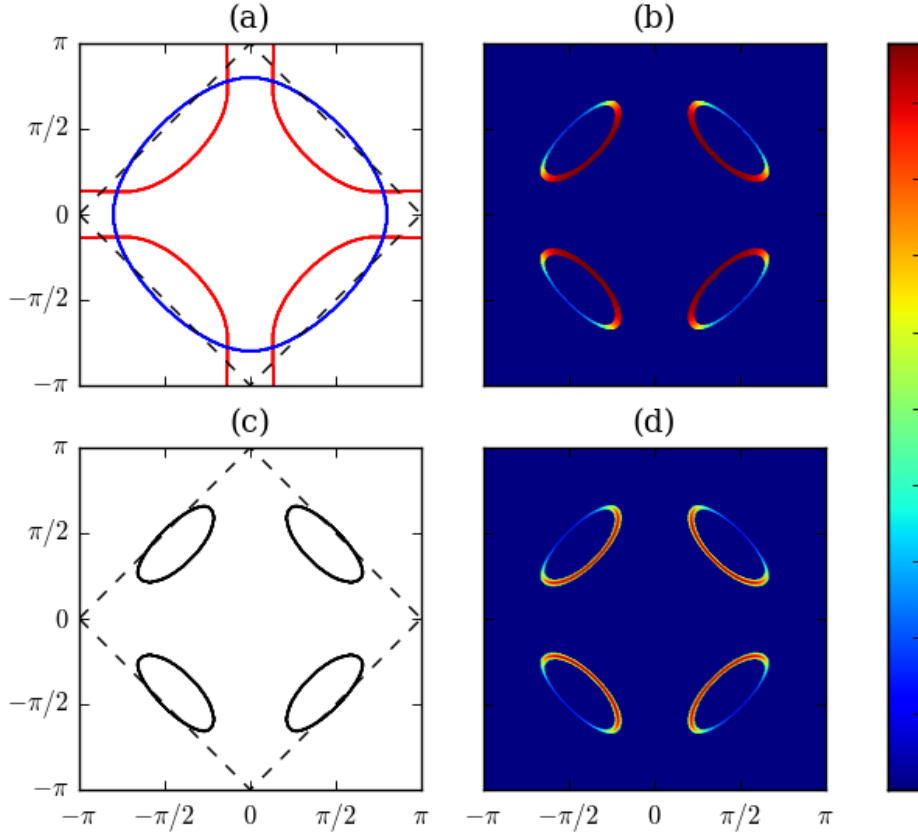


FIG. 5. As in Fig. 2 but with $\tilde{\varepsilon}(\mathbf{k}) = -0.3t + 0.5t(\cos k_x + \cos k_y)$ and $\lambda = 0.5t$.

and the center of the pockets are inside the first magnetic Brillouin zone. In general the shape of hole pockets seen in the experiments can be fit to our model. As shown in Fig. 2-5, the weight of electron operator on the outer part of the pockets is tiny and may be hard to see in experiments.

We close this section by remarking on the status of Luttinger's theorem in our theory of the electron spectral function. These issues were discussed in Refs. 34 and 43, where we argued that the theorem applied to the sum of the F_α , G_α and the ψ_\pm Fermi surfaces. Here we will focus on the electron-like F_α , G_α , and will drop the ψ_\pm contributions to the present discussion; the latter will amount to shift in the effective doping level x . Under this assumption the total number of F_α and G_α per site is $2 - x$, and so is the number of C_α and D_α , since the canonical transformation in equation (3.6) preserves particle number. On the other hand, our theory was applied to the doped holes or electrons in the background of a fluctuating antiferromagnet, and each such charge carrier must occupy one state within the Fermi surface. Counting hole (electron)-like Fermi surfaces as negative (positive), then for a doped antiferromagnet with hole density x , the Fermi surfaces in Figs. 2-5 should enclose a total area of $-(2\pi)^2(x/2)$ (the last factor of 2 is from spin degeneracy). In our

present effective Hamiltonian model, we have found it more efficient to treat not just the fermionic excitations near the electron and hole pockets, but across the entire Brillouin zone. We found that this method was very convenient in treating the constraints imposed by symmetry, without prejudicing the final locations of the Fermi surfaces. Such an extension should not be accompanied by any fundamental change in the many body quantum state, and hence cannot modify the statement of Luttinger's theorem. Because the Luttinger constraint only controls the electron density modulo 2 per unit cell, we therefore conclude that our lattice effective model obeys

$$\langle F_{i\alpha}^\dagger F_{i\alpha} \rangle + \langle G_{i\alpha}^\dagger G_{i\alpha} \rangle = \langle C_{i\alpha}^\dagger C_{i\alpha} \rangle + \langle D_{i\alpha}^\dagger D_{i\alpha} \rangle = 2 - x \quad (3.10)$$

Note that this differs from the value in the conventional Fermi liquid phase, in which case the total electron density is $1 - x$. This difference is acceptable here because we are discussing a phase with topological order, which has an emergent U(1) gauge excitation⁶⁰.

In the discussion of YRZ model^{57,58} a different form of Luttinger's theorem is used: there the total number of particles given by Green's function (3.9) is given by the total area enclosed by the contours where the Green's function changes sign. This includes not only the Fermi pockets on which the Green's function diverges, but also the contour where the Green's function vanishes. For our Green's function of C bound states in equation (3.8) this extra Luttinger surface of zeros is exactly the original Fermi surface of D bound states without the mixing between C and D . Therefore the total area enclosed by both Fermi pockets and surface of zeros equal to total number of C and D states minus the number of D states, and the result is the total number of C states. So this form of Luttinger's theorem still holds true in our model, although it is not relevant to the physical doping, which is related to the area of Fermi pockets only.

A. Coupling to photons

Apart from the electron-like bound states described in the previous section, the other low-lying excitations in the ACL are the gapless U(1) photons. Here we discuss how these two low-lying sectors of the theory couple to each other.

Our first task is search for terms coupling the F_α, G_α to the photons, while being invariant under all the transformations in Table I. It is useful to do this on the lattice, as many of the operations involve details of the lattice symmetry. The F_α, G_α are gauge-invariant, and so will couple only to the field strengths: on the lattice, we define these as

$$\mathcal{B} = \Delta_x A_y - \Delta_y A_x \quad , \quad \mathcal{E}_x = \Delta_x A_\tau - \Delta_\tau A_x \quad , \quad \mathcal{E}_y = \Delta_y A_\tau - \Delta_\tau A_y; \quad (3.11)$$

thus \mathcal{B} resides at the center of each square lattice plaquette, while $\mathcal{E}_{x,y}$ reside on the links.

After some searching, we found a single term which is linear in the field strengths which

fulfills the needed criteria:

$$\mathcal{S}_\gamma = -i\gamma \int d\tau \sum_i [\mathcal{E}_x (F_\alpha^\dagger \Delta_x G_\alpha - G_\alpha^\dagger \Delta_x F_\alpha) + \mathcal{E}_y (F_\alpha^\dagger \Delta_y G_\alpha - G_\alpha^\dagger \Delta_y F_\alpha)] \quad (3.12)$$

This coupling contributes to the self-energy correction of the bound states. At the lowest order, the self-energy correction is represented by the Feynman diagram in Fig. 6,



FIG. 6. Feynman diagram for the self-energy correction. The solid line with arrow represents F or G fermion propagator and the wiggly line represents electric field propagator. The interaction vertex is given by equation (3.12). This diagram is evaluated in equation (3.18).

The action of U(1) gauge field has contributions from both the ψ_\pm fermions and z_α field. Assuming that there exist Fermi surfaces of the ψ_\pm fermions, integrating them out screens the fluctuation of the A_τ component, and gives the following terms for the action of the transverse components of A

$$S^{Af} = \frac{1}{2} \int \frac{d^2 p d\omega}{(2\pi)^3} A_i(-p, -\omega) \left(\delta^{ij} - \frac{p^i p^j}{p^2} \right) \left(k_F^\psi \frac{|\omega|}{p} + p^2 \right) A_j(p, \omega) \quad (3.13)$$

Here k_F^ψ is the Fermi momentum of the ψ_\pm Fermi surface.

We consider two possibilities of the z_α fields. At the magnetic ordering critical point, integrating out z_α field gives rise to the following action

$$S^{Az} = \frac{1}{2} \int \frac{d^2 p d\omega}{(2\pi)^3} A_i(-p, -\omega) \left(\delta^{ij} - \frac{p^i p^j}{p^2} \right) \sqrt{\omega^2 + c_s^2 p^2} A_j(p, \omega) \quad (3.14)$$

On the other hand, if the z_α field is gapped as in the ACL, integrating it out gives rise to terms proportional to $\omega^2 + c_s^2 p^2$, which are higher order than those in Eq (3.13).

In summary, the U(1) gauge field action can be written as

$$S^{Az} = \frac{1}{2} \int \frac{d^2 p d\omega}{(2\pi)^3} A_i(-p, -\omega) \Pi(p, \omega) A_j(p, \omega) \quad (3.15)$$

where the polarization function Π is given by

$$\Pi(p, \omega) = k_F^\psi \frac{|\omega|}{p} + \sqrt{\omega^2 + c_s^2 p^2} + \dots \quad \text{at the quantum critical point} \quad (3.16)$$

$$\Pi(p, \omega) = k_F^\psi \frac{|\omega|}{p} + p^2 \quad \text{in the ACL} \quad (3.17)$$

for imaginary frequencies ω .

Using the action in equation (3.13) and (3.14) we can evaluate the Feynman diagram in Fig. 6.

$$\Sigma(p, \omega) = \gamma^2 \int \frac{d^2 q d\Omega}{(2\pi)^3} \frac{1}{i(\Omega + \omega) - \xi_q} \frac{\Omega^2}{\Pi(|\mathbf{p} - \mathbf{q}|, \Omega)} (p_i + q_i)(p_j + q_j) \left[\delta^{ij} - \frac{(p_i - q_i)(p_j - q_j)}{(\mathbf{p} - \mathbf{q})^2} \right] \quad (3.18)$$

Here we consider a simple one-band model for the bound state with a quadratic dispersion $\xi_a = q^2/(2m) - \mu$. The polarization factor at the end can be simplified as

$$(p_i + q_i)(p_j + q_j) \left[\delta^{ij} - \frac{(p_i - q_i)(p_j - q_j)}{(\mathbf{p} - \mathbf{q})^2} \right] = \frac{4p^2 q^2 (1 - \cos^2 \theta)}{p^2 + q^2 - 2pq \cos \theta} \quad (3.19)$$

where θ is the angle between \mathbf{p} and \mathbf{q} .

We are interested in the life-time of quasiparticles near the Fermi surface, so we consider the imaginary part of self-energy at the quasiparticle pole ($p, \omega = \xi_p$). Without losing generality, we consider the case of $\omega > 0$. At zero temperature, energy of the intermediate fermion state must be greater than zero but smaller than ω , so its momentum must be inside the shell of $k_F < q < p$. The imaginary part of self-energy is

$$\begin{aligned} \text{Im}\Sigma^{\text{ret}}(p, \omega) &= \frac{\gamma^2}{(2\pi)^2} \int_{k_F}^p q dq \int_0^{2\pi} d\theta (\omega - \xi_q)^2 \\ &= \text{Im} \frac{1}{\Pi^{\text{ret}}(|\mathbf{p} - \mathbf{q}|, \omega - \xi_q)} \frac{4p^2 q^2 (1 - \cos^2 \theta)}{p^2 + q^2 - 2pq \cos \theta} \end{aligned} \quad (3.20)$$

Near the Fermi surface we can linearize the dispersion relation $\xi_q = v_F(q - p_F)$, and $\omega = \xi_p = v_F(p - p_F)$. We change the integrated variable from q to $k = p - q$, $0 < k < \omega/v_F$. In the limit of $\omega \rightarrow 0$, or $p - p_F \rightarrow 0$, the integral can be simplified

$$\text{Im}\Sigma^{\text{ret}}(p, \omega) = \frac{\gamma^2 k_F^6}{\pi^2 m^2} \int_0^{\frac{\omega}{v_F}} dk \int_0^{2\pi} d\theta k^2 \text{Im} \frac{1}{\Pi^{\text{ret}}(\sqrt{k^2 + 2p_F^2(1 - \cos \theta)}, v_F k)} \frac{1 + \cos \theta}{k^2/(1 - \cos \theta) + p_F^2} \quad (3.21)$$

In both of the cases considered in Eqs. (3.16) and (3.17), the gauge field spectrum function

$$\text{Im} \frac{1}{\Pi^{\text{ret}}(\sqrt{k^2 + 2p_F^2(1 - \cos \theta)}, v_F k)} \sim k^{-1}, \quad k \rightarrow 0$$

when $\theta \neq 0$, and becomes less singular at $\theta = 0$. As a result the integral in Eq. (3.20) has the following behavior

$$\text{Im}\Sigma^{\text{ret}}(p, \omega) \sim \omega^2, \quad \omega \rightarrow 0.$$

Thus the bound state fermion has a Fermi liquid-like damping.

This conclusion is different from Essler and Tsvetik's work on a model of weakly coupled

chains^{54,55}. Their pocket states arose from binding between the one-dimensional holons and spinons, and the coupling to the one-dimensional spin fluctuations led to a self-energy proportional to $\omega \ln(\omega)$. Our model is genuinely two-dimensional, and has an emergent U(1) gauge field whose presence is also the key to the violation of the Luttinger theorem in Eq. (3.10). They explain the violation of the Luttinger theorem by zeros of the Green's function^{54,55,58}; the connection of these zeros to our work was discussed below Eq. (3.10).

IV. ELECTRON SPECTRAL FUNCTIONS IN THE RENORMALIZED CLASSICAL REGIME

We will now consider the regime at small non-zero T above the antiferromagnetically ordered state present at $g < g_c$, the renormalized classical (RC) regime. Here, we expect the O(3) vector formulation of \mathcal{L}_{sf} in Eq. (1.1) to be equivalent to the spinor/U(1) gauge theory formulation of \mathcal{L}_{acl} in Eq. (2.6). This is explored at $T = 0$ in Appendix A, where we show that the small g expansions of the two theories match with each other. Thus, while there are differences in the nature of the non-magnetic phases at $g > g_c$ in the two cases (as reviewed in Section I), the $g < g_c$ phase and its low T RC regimes are the same.

The RC regime was studied using the O(3) formulation by Vilk and Tremblay⁴⁹, and using a U(1) gauge theory similar to \mathcal{L}_{acl} by Borejsza and Dupuis⁵⁰. Here we shall also use \mathcal{L}_{acl} , and expand upon these earlier results.

We compute the electron spectral function as a convolution of the z_α propagator with the free ψ propagator containing pocket Fermi surfaces obtained from \mathcal{L}_ψ .

For the z_α propagator we use the simple damped form motivated by studies in the $1/N$ expansion.⁵⁶

$$G_z(\mathbf{k}, \omega) = \frac{1}{-(\omega + i\gamma m)^2 + v^2 k^2 + m^2} \quad (4.1)$$

where the dimensionless constant γ determines the damping constant, and the “mass” m is determined by the “large N ” equation

$$m = 2T \ln \left[\frac{e^{-2\pi\varrho/T} + \sqrt{e^{-4\pi\varrho/T} + 4}}{2} \right] \quad (4.2)$$

where

$$\varrho = v^2 \left(\frac{1}{g} - \frac{1}{g_c} \right) \quad (4.3)$$

is the energy scale which determines the deviation from the quantum critical point. The damping in Eq. (4.1) is a simple interpolation form which is constant with the expected behavior at the quantum critical point, and with the RC behavior of Eq. (7.28) in Ref.⁶¹. Actually, we have neglected the power-law pre-factor of the exponential in (7.28). Determining the damping from numerical studies motivated by the ϵ expansion⁶² we expect $\gamma \approx 1$.

In Fig. 7 and 8 we plot electron spectrum function obtained as a convolution of the z_α and fermion spectrum functions at finite temperature. Here fermion dispersion relation is the same as the one we used in the plots in section III. In contrast to Fig. 2-5, the pockets are symmetric with respect to the magnetic Brillouin zone boundary, and hole pockets are centered at $(\pi/2, \pi/2)$. Again, the inner half of the pockets has higher spectrum weight, as the quasiparticle on outer half of the pockets is primarily made of fermion quasiparticles at $f_{k+(\pi,\pi)}$. The broadening of the spectrum comes from two factors: first, the z boson has a finite life-time γm ; second, the convolution is done at finite temperature, so the energy of fermion and boson excitation does not have to be exactly zero, but can vary by energies of order T . The second factor dominates in the RC regime because $m \ll T$, and γ is of order 1. So the electron spectrum is basically the pocket fermion dispersion broadened by a linewidth of order T : see Fig. 7 and Fig. 8. Earlier work⁴⁹ had also obtained a linewidth

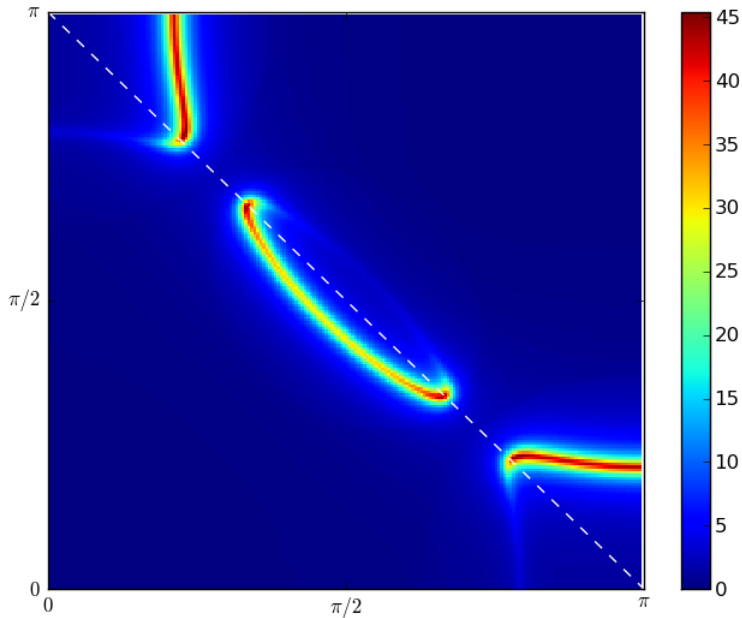


FIG. 7. Electron spectrum function at zero frequency as a convolution of z_α and the ψ_\pm fermions. In the plot we chose the following parameters: $\rho = 0.1t$, $T = 0.2t$ and the SDW gap $\lambda = 0.2t$. The white dashed line shows the boundary of the diamond magnetic Brillouin zone of the commensurate (π, π) AFM order.

of order T in the RC regime by very different methods.

As we noted above, the present Fermi surface locations are symmetric with respect to the magnetic Brillouin zone boundary, unlike those in Figs. 2-5. However, as shown in Ref. 33, the Shraiman-Siggia term in Eq. (2.11) lifts this symmetry. We can compute perturbative corrections to leading order in λ , and these will contribute spectral weight of width T which is asymmetric about the magnetic Brillouin zone boundary.

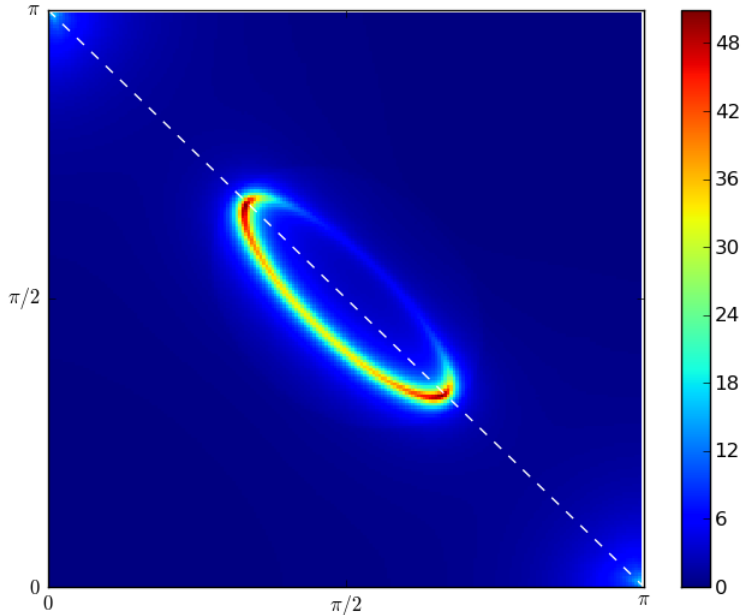


FIG. 8. Electron spectrum function at zero frequency as a convolution of z_α and the ψ_\pm fermions. In the plot we chose the following parameters: $\rho = 0.1t$, $T = 0.2t$ and the SDW gap $\lambda = 0.5t$. The white dashed line shows the boundary of the diamond magnetic Brillouin zone of the commensurate (π, π) AFM order.

V. CONCLUSIONS

We conclude by reviewing the different routes³⁷ by which the spin fermion model \mathcal{L}_{sf} in Eq. (1.1) can lose antiferromagnetic order, and their implications for the photoemission spectrum at finite temperatures.

The first, more conventional, route is that there is a single direct transition at $g = g_c$ to a Fermi liquid with a large Fermi surface. Then in the T - g plane, we have the conventional⁶¹ quantum disordered (QD), quantum critical (QC), and renormalized classical (RC) regions. In QD region at small T for $g > g_c$, the electron spectrum will show quasiparticle peaks with a Fermi liquid linewidth $\sim T^2$. In the QC region near $g = g_c$, the spectrum will again show weight along the large Fermi surface, but with large anomalous linewidths near the ‘hot spots’: these are points along the large Fermi surface connected by the ordering wavevector \mathbf{K} . Finally, in the RC region at small T for $g < g_c$, we have the behavior described in Section IV: the spectrum has ‘small’ Fermi pockets which are centered at the antiferromagnetic Brillouin zone boundary, and the quasiparticle peaks have a width $\sim T$; examples of such spectra were shown in Figs. 7, 8.

This paper mainly considered a more exotic route^{33,34} towards loss of antiferromagnetic order in the spin-fermion model. This route is possible if topological “hedgehog” tunnelling

events are suppressed as the transition, as they are at magnetic-disordering transitions in the insulator (see Fig. 1). Then the transition at $g = g_c$ is to a non-magnetic non-Fermi liquid ACL, with the spinless fermions ψ_{\pm} and complex bosonic spinons z_{α} as elementary excitations, interacting (in the simplest case) via an emergent U(1) gauge force. Again, around this critical point at $g = g_c$, we can define the corresponding RC, QC, and QD regions. The electron spectrum in the RC region is just as in the first case above, as discussed in Section IV and Appendix A. The novel spectrum in the QD region was the main focus of Section III. One contribution to the spectral weight comes from the convolution of the deconfined spinons and the ψ_{\pm} . This leads to incoherent spectral weight in ‘arc’-like regions which were described earlier in Ref. 33. However, it has been argued^{33,34} that the spinons and ψ_{\pm} form electron-like bound states, and these were described in more detail in Section III. We found that the bound states lead to pocket Fermi surfaces, as shown in Figs 2-5. An important feature of these spectra are that the pockets are not centered at the point $(\pi/2, \pi/2)$ on the antiferromagnetic Brillouin zone boundary. In fact, this zone boundary plays no special role, and there are no symmetry relations on the quasiparticle dispersions across it. We note that recent photoemission observations⁹ show features related to this QD region. We did not address the QC region here, but it should mainly have the incoherent arc spectra, as described in Ref. 33.

We also noted a similarity between our ACL QD results, and the YRZ model^{57–59} in Section III. The assumptions of YRZ are very different from ours, as they depart from a paired fermionic spinons in a spin-liquid state. The Fermi surfaces in the YRZ model do not obey the conventional Luttinger theorem, as is the case in our model. However, such a violation must be accompanied by gauge forces reflecting the topological order in such a state⁶⁰: these gauge fields do not appear in their formulation. Also, we dealt mainly with the influence of local antiferromagnetic order on the electron spectrum. We have not included pairing effects in our computations yet, or the transition to superconductivity; these are issues we hope to address in forthcoming work.

ACKNOWLEDGMENTS

We thank J. Carbotte, M. Metlitski, and A.-M. Tremblay for useful discussions. This research was supported by the National Science Foundation under grant DMR-0757145, by the FQXi foundation, and by a MURI grant from AFOSR.

Appendix A: Small g expansion

This Appendix will compare the properties of the Lagrangian \mathcal{L}_{sf} defined in Eq. (1.1), with the ‘fractionalized’ Lagrangian \mathcal{L}_{acl} in Eq. (2.6). We will work at $T = 0$ in the limit of small g , where both models have long range SDW order, and are expected to be essentially

identical. We will compare the two models here by computing the on-shell matrix element for the decay of a spin-wave in the SDW state into a fermionic particle hole pair.

We will work in the “diamond” Brillouin zone associated with antiferromagnetic ordering with wavevector $\mathbf{K} = (\pi, \pi)$. In this zone we define

$$\begin{aligned} c_{1\alpha}(\mathbf{k}) &\equiv c_\alpha(\mathbf{k}) \quad , \quad \varepsilon_1(\mathbf{k}) = \varepsilon(\mathbf{k}) \\ c_{2\alpha}(\mathbf{k}) &\equiv c_\alpha(\mathbf{k} + \mathbf{K}) \quad , \quad \varepsilon_2(\mathbf{k}) = \varepsilon(\mathbf{k} + \mathbf{K}) \end{aligned} \quad (\text{A1})$$

All expressions below are implicitly in this diamond Brillouin zone.

The analysis of the spin-wave decay appears for the two models in the following subsections.

1. Spin-fermion model

We perform the small g expansion for the order parameter by the following parameterization in terms of the spin-wave field ϕ :

$$n^a = \left(\frac{\phi + \phi^*}{2} \sqrt{2g - g^2|\phi|^2}, \frac{\phi - \phi^*}{2i} \sqrt{2g - g^2|\phi|^2}, 1 - g|\phi|^2 \right) \quad (\text{A2})$$

Then the Lagrangian for n^a is

$$\mathcal{L}_n = |\partial_\mu \phi|^2 + \frac{g}{4} [(\phi^* \partial_\mu \phi)^2 + (\phi \partial_\mu \phi^*)^2] + \frac{g^2}{8} \frac{|\phi|^2}{(2 - g|\phi|^2)} (\phi^* \partial_\mu \phi + \phi \partial_\mu \phi^*)^2 \quad (\text{A3})$$

and can be analyzed as usual in an expansion in g . For the fermion sector, we diagonalize the $\mathcal{L}_c + \mathcal{L}_\lambda$ at $g = 0$ by introducing fermion operators $\gamma_{1,2p}$, and (we replace the electron index α by $p = \pm 1$)

$$\begin{aligned} c_{1p}(\mathbf{k}) &= u_{\mathbf{k}} \gamma_{1p}(\mathbf{k}) - p v_{\mathbf{k}} \gamma_{2p}(\mathbf{k}) \\ c_{2p}(\mathbf{k}) &= p v_{\mathbf{k}} \gamma_{1p}(\mathbf{k}) + u_{\mathbf{k}} \gamma_{2p}(\mathbf{k}) \end{aligned} \quad (\text{A4})$$

where $u_{\mathbf{k}}, v_{\mathbf{k}}$ are real and obey $u_{\mathbf{k}}^2 + v_{\mathbf{k}}^2 = 1$. We choose $u_{\mathbf{k}} = \cos(\theta_{\mathbf{k}}/2)$, $v_{\mathbf{k}} = \sin(\theta_{\mathbf{k}}/2)$, and then

$$\cos \theta_{\mathbf{k}} = \frac{\varepsilon_1(\mathbf{k}) - \varepsilon_2(\mathbf{k})}{\sqrt{(\varepsilon_1(\mathbf{k}) - \varepsilon_2(\mathbf{k}))^2 + 4\lambda^2}} \quad \sin \theta_{\mathbf{k}} = \frac{-2\lambda}{\sqrt{(\varepsilon_1(\mathbf{k}) - \varepsilon_2(\mathbf{k}))^2 + 4\lambda^2}}. \quad (\text{A5})$$

The fermion Lagrangian at $g = 0$ is

$$\mathcal{L}_\gamma = \sum_{\mathbf{k}, p} \gamma_{1p}^\dagger (\partial_\tau + E_1(\mathbf{k})) \gamma_{1p} + \sum_{\mathbf{k}, p} \gamma_{2p}^\dagger (\partial_\tau + E_2(\mathbf{k})) \gamma_{2p} \quad (\text{A6})$$

where

$$E_{1,2}(\mathbf{k}) = \frac{1}{2} \left[\varepsilon_1(\mathbf{k}) + \varepsilon_2(\mathbf{k}) \pm \sqrt{(\varepsilon_1(\mathbf{k}) - \varepsilon_2(\mathbf{k}))^2 + 4\lambda^2} \right] \quad (\text{A7})$$

Finally, the non-linear couplings between the spin waves and the fermions is given by

$$\begin{aligned} \mathcal{L}_{\phi,\gamma} = & -\lambda\sqrt{2g} \sum_{\mathbf{k},\mathbf{q}} \left[\phi\sqrt{1-g|\phi|^2/2} \right]_{\mathbf{q}} \left[\right. \\ & (u_{\mathbf{k}+\mathbf{q}}v_{\mathbf{k}} - u_{\mathbf{k}}v_{\mathbf{k}+\mathbf{q}})(\gamma_{1-}^{\dagger}(\mathbf{k}+\mathbf{q})\gamma_{1+}(\mathbf{k}) - \gamma_{2-}^{\dagger}(\mathbf{k}+\mathbf{q})\gamma_{2+}(\mathbf{k})) \\ & \left. + (u_{\mathbf{k}+\mathbf{q}}u_{\mathbf{k}} + v_{\mathbf{k}}v_{\mathbf{k}+\mathbf{q}})(\gamma_{1-}^{\dagger}(\mathbf{k}+\mathbf{q})\gamma_{2+}(\mathbf{k}) + \gamma_{2-}^{\dagger}(\mathbf{k}+\mathbf{q})\gamma_{1+}(\mathbf{k})) \right] + \text{H.c.} \\ & + g\lambda \sum_{\mathbf{k},\mathbf{q}} \sum_p \left[|\phi|^2 \right]_{\mathbf{q}} \left[(u_{\mathbf{k}+\mathbf{q}}v_{\mathbf{k}} + u_{\mathbf{k}}v_{\mathbf{k}+\mathbf{q}})(\gamma_{1p}^{\dagger}(\mathbf{k}+\mathbf{q})\gamma_{1p}(\mathbf{k}) - \gamma_{2p}^{\dagger}(\mathbf{k}+\mathbf{q})\gamma_{2p}(\mathbf{k})) \right. \\ & \left. + p(u_{\mathbf{k}+\mathbf{q}}u_{\mathbf{k}} - v_{\mathbf{k}}v_{\mathbf{k}+\mathbf{q}})(\gamma_{1p}^{\dagger}(\mathbf{k}+\mathbf{q})\gamma_{2p}(\mathbf{k}) + \gamma_{2p}^{\dagger}(\mathbf{k}+\mathbf{q})\gamma_{1p}(\mathbf{k})) \right] \quad (\text{A8}) \end{aligned}$$

Now we can obtain the self-energy of the ϕ spin-wave excitation to order g :

$$\begin{aligned} \Sigma_{\phi}(\mathbf{q}, \omega_n) = & -2\lambda^2 g \sum_{\mathbf{k}} \left[\right. \\ & (u_{\mathbf{k}+\mathbf{q}}v_{\mathbf{k}} - u_{\mathbf{k}}v_{\mathbf{k}+\mathbf{q}})^2 \left(\frac{f(E_1(\mathbf{k})) - f(E_1(\mathbf{k}+\mathbf{q}))}{-i\omega_n + E_1(\mathbf{k}+\mathbf{q}) - E_1(\mathbf{k})} + \frac{f(E_2(\mathbf{k})) - f(E_2(\mathbf{k}+\mathbf{q}))}{-i\omega_n + E_2(\mathbf{k}+\mathbf{q}) - E_2(\mathbf{k})} \right) \\ & + (u_{\mathbf{k}+\mathbf{q}}u_{\mathbf{k}} + v_{\mathbf{k}}v_{\mathbf{k}+\mathbf{q}})^2 \left(\frac{f(E_2(\mathbf{k})) - f(E_1(\mathbf{k}+\mathbf{q}))}{-i\omega_n + E_1(\mathbf{k}+\mathbf{q}) - E_2(\mathbf{k})} + \frac{f(E_1(\mathbf{k})) - f(E_2(\mathbf{k}+\mathbf{q}))}{-i\omega_n + E_2(\mathbf{k}+\mathbf{q}) - E_1(\mathbf{k})} \right) \left. \right] \\ & + 2g\lambda \sum_{\mathbf{k}} 2u_{\mathbf{k}}v_{\mathbf{k}}(f(E_1(\mathbf{k})) - f(E_2(\mathbf{k}))) \quad (\text{A9}) \end{aligned}$$

As expected, we have $\Sigma_{\phi}(0, 0) = 0$. We can also estimate the on-shell decay rate at $T = 0$: $\text{Im}\Sigma_{\phi}(vq, q) \sim gq^2$, as long as $v < v_F$.

We can also use $\mathcal{L}_{\phi,\gamma}$ to compute the fermion spectral density at order g . For the case of a single particle in the insulator, it seems to me that the result has the same form as (2.47) in Ref. 63.

2. U(1) gauge theory

For small g , we parametrize the z_{α} field of the CP^1 model as

$$z_{\alpha} = \begin{pmatrix} \sqrt{1-g|\phi|^2/2} \\ \sqrt{g/2}\phi \end{pmatrix} e^{i\vartheta} \quad (\text{A10})$$

Then the Lagrangian for z_α is

$$\mathcal{L}_z = |\partial_\mu \phi|^2 + \frac{g}{4(2-g|\phi|^2)} (\phi^* \partial_\mu \phi + \phi \partial_\mu \phi^*)^2 + \frac{2}{g} (\partial_\mu \vartheta - A_\mu)^2 - i(\partial_\mu \vartheta - A_\mu)(\phi^* \partial_\mu \phi - \phi \partial_\mu \phi^*) \quad (\text{A11})$$

If we integrate over A_μ in the gauge $\vartheta = 0$, we reproduce the action in Eq. (A3).

The integral over A_μ also produces a coupling between $\phi^* \partial_\mu \phi - \phi \partial_\mu \phi^*$ and the U(1) current over the $\psi_{1,2p}$ fermions. Note that this is a quartic coupling, a bilinear in ϕ coupling to a bilinear in $\psi_{1,2p}$.

In our discussion in Section A1, the dominant coupling between the fermions and the spin-waves was the term in $\mathcal{L}_{\phi,\gamma}$ which was *linear* in ϕ . Such terms arise here exclusively from \mathcal{L}_{ss} . We evaluated the on-shell matrix elements from such terms for the decay of a ϕ spin wave into a particle hole pair of the γ_{1p} (and also to the γ_{2p}). From the first term in \mathcal{L}_{ss} we have the matrix element

$$\sqrt{g/2} \mathbf{q} \cdot \left(u_{\mathbf{k}}^2 \frac{\partial \varepsilon_1(\mathbf{k})}{\partial \mathbf{k}} - v_{\mathbf{k}}^2 \frac{\partial \varepsilon_2(\mathbf{k})}{\partial \mathbf{k}} \right) \quad (\text{A12})$$

For the time-derivative term in \mathcal{L}_{ss} we replace the frequency by its on-shell value $\mathbf{q} \cdot \partial E_1(\mathbf{k})/\partial \mathbf{k}$ to obtain the matrix element

$$- \sqrt{g/2} \mathbf{q} \cdot \frac{\partial E_1(\mathbf{k})}{\partial \mathbf{k}} (u_{\mathbf{k}}^2 - v_{\mathbf{k}}^2) \quad (\text{A13})$$

The sum of (A12) and (A13) is equal to the matrix element obtained in Section A1, which is

$$\lambda \sqrt{2g} \mathbf{q} \cdot \left(v_{\mathbf{k}} \frac{\partial u_{\mathbf{k}}}{\partial \mathbf{k}} - u_{\mathbf{k}} \frac{\partial v_{\mathbf{k}}}{\partial \mathbf{k}} \right). \quad (\text{A14})$$

¹ D. S. Marshall, D. S. Dessau, A. G. Loeser, C-H. Park, A. Y. Matsuura, J. N. Eckstein, I. Bozovic, P. Fournier, A. Kapitulnik, W. E. Spicer, and Z.-X. Shen, Phys. Rev. Let. **76**, 4841 (1996).

² M. R. Norman, H. Ding, M. Randeria, J. C. Campuzano, T. Yokoya, T. Takeuchi, T. Takahashi, T. Mochiku, K. Kadowaki, P. Guptasarma, and D. G. Hinks, Nature **392**, 157 (1998).

³ Kyle M. Shen, F. Ronning, D. H. Lu, F. Baumberger, N. J. C. Ingle, W. S. Lee, W. Meevasana, Y. Kohsaka, M. Azuma, M. Takano, H. Takagi, and Z.-X. Shen, Science **307**, 901 (2005).

⁴ A. Kanigel, M. R. Norman, M. Randeria, U. Chatterjee, S. Suoma, A. Kaminski, H. M. Fretwell, S. Rosenkranz, M. Shi, T. Sato, T. Takahashi, Z. Z. Li, H. Raffy, K. Kadowaki, D. Hinks, L. Ozyuzer, and J. C. Campuzano, Nature Physics **2**, 447 (2006).

⁵ Kiyohisa Tanaka, W. S. Lee, D. H. Lu, A. Fujimori, T. Fujii, Risdiana, I. Terasaki,

- D. J. Scalapino, T. P. Devereaux, Z. Hussain, and Z.-X. Shen, *Science* **314**, 1910 (2006).
- ⁶ W. S. Lee, I. M. Vishik, K. Tanaka, D. H. Lu, T. Sasagawa, N. Nagaosa, T. P. Devereaux, Z. Hussain, Z.-X. Shen *Nature* **450**, 81 (2007).
- ⁷ J. Chang, Y. Sassa, S. Guerrero, M. Månsson, M. Shi, S. Pailhé s, A. Bendounan, R. Mottl, T. Claesson, O. Tjernberg, L. Patthey, M. Ido, M. Oda, N. Momono, C. Mudry and J. Mesot, *New J. Physics* **10**, 103016 (2008).
- ⁸ H.-B. Yang, J. D. Rameau, P. D. Johnson, T. Valla, A. Tsvelik, and G. D. Gu *Nature* **456**, 77 (2008).
- ⁹ Jianqiao Meng, Guodong Liu, Wentao Zhang, Lin Zhao, Haiyun Liu, Xiaowen Jia, Daixiang Mu, Shanyu Liu, Xiaoli Dong, Wei Lu, Guiling Wang, Yong Zhou, Yong Zhu, Xiaoyang Wang, Zuyan Xu, Chuangtian Chen, and X. J. Zhou, *Nature* **462**, 335 (2009).
- ¹⁰ Y. Kohsaka, C. Taylor, P. Wahl, A. Schmidt, Jinhwan Lee, K. Fujita, J. W. Alldredge, Jinho Lee, K. McElroy, H. Eisaki, S. Uchida, D.-H. Lee, J. C. Davis, *Nature* **454**, 1072 (2008).
- ¹¹ R.-H. He, K. Tanaka, S.-K. Mo, T. Sasagawa, M. Fujita, T. Adachi, N. Mannella, K. Yamada, Y. Koike, Z. Hussain and Z.-X. Shen, *Nature Physics* **5**, 119 (2008).
- ¹² Takeshi Kondo, Rustem Khasanov, Tsunehiro Takeuchi, Jörg Schmalian, and Adam Kaminski, *Nature* **457**, 296 (2009).
- ¹³ A. Pushp, C. V. Parker, A. N. Pasupathy, K. K. Gomes, S. Ono, J. Wen, Z. Xu, G. Gu, and A. Yazdani, *Science* **324**, 1689 (2009).
- ¹⁴ N. P. Armitage, D. H. Lu, C. Kim, A. Damascelli, K. M. Shen, F. Ronning, D. L. Feng, P. Bogdanov, X. J. Zhou, W. L. Yang, Z. Hussain, P. K. Mang, N. Kaneko, M. Greven, Y. Onose, Y. Taguchi, Y. Tokura, and Z.-X. Shen, *Phys. Rev. B* **68**, 064517 (2003).
- ¹⁵ T. Claesson, M. Månsson, C. Dallera, F. Venturini, C. De Nadaï, N. B. Brookes, and O. Tjernberg, *Phys. Rev. Lett.* **93**, 136402 (2004).
- ¹⁶ H. Matsui, K. Terashima, T. Sato, T. Takahashi, S.-C. Wang, H.-B. Yang, H. Ding, T. Uefuji, and K. Yamada, *Phys. Rev. Lett.* **94**, 047005 (2005).
- ¹⁷ S. R. Park, Y. S. Roh, Y. K. Yoon, C. S. Leem, J. H. Kim, B. J. Kim, H. Koh, H. Eisaki, N. P. Armitage, and C. Kim, *Phys. Rev. B* **75**, 060501(R) (2007).
- ¹⁸ N. Doiron-Leyraud, C. Proust, D. LeBoeuf, J. Levallois, J.-B. Bonnemaison, R. Liang, D. A. Bonn, W. N. Hardy, and L. Taillefer, *Nature* **447**, 565 (2007).
- ¹⁹ E. A. Yelland, J. Singleton, C. H. Mielke, N. Harrison, F. F. Balakirev, B. Dabrowski, and J. R. Cooper, *Phys. Rev. Lett.* **100**, 047003 (2008).
- ²⁰ A. F. Bangura, J. D. Fletcher, A. Carrington, J. Levallois, M. Nardone, B. Vignolle, P. J. Heard, N. Doiron-Leyraud, D. LeBoeuf, L. Taillefer, S. Adachi, C. Proust, and N. E. Hussey, *Phys. Rev. Lett.* **100**, 047004 (2008).
- ²¹ C. Jaudet, D. Vignolles, A. Audouard, J. Levallois, D. LeBoeuf, N. Doiron-Leyraud, B. Vignolle, M. Nardone, A. Zitouni, Ruixing Liang, D. A. Bonn, W. N. Hardy, L. Taillefer, and C. Proust, *Phys. Rev. Lett.* **100**, 187005 (2008).

- ²² S. E. Sebastian, N. Harrison, E. Palm, T. P. Murphy, C. H. Mielke, Ruixing Liang, D. A. Bonn, W. N. Hardy, and G. G. Lonzarich, *Nature* **454**, 200 (2008).
- ²³ D. LeBoeuf, N. Doiron-Leyraud, J. Levallois, R. Daou, J.-B. Bonnemaïson, N. E. Hussey, L. Balicas, B. J. Ramshaw, R. Liang, D. A. Bonn, W. N. Hardy, S. Adachi, C. Proust, and L. Taillefer, *Nature* **450**, 533 (2007).
- ²⁴ S. E. Sebastian, N. Harrison, C. H. Mielke, Ruixing Liang, D. A. Bonn, W. N. Hardy, and G. G. Lonzarich, arXiv:0907.2958.
- ²⁵ J. Chang, R. Daou, Cyril Proust, David LeBoeuf, Nicolas Doiron-Leyraud, Francis Laliberte, B. Pingault, B. J. Ramshaw, Ruixing Liang, D. A. Bonn, W. N. Hardy, H. Takagi, A. Antunes, I. Sheikin, K. Behnia, and Louis Taillefer, arXiv:0907.5039 (2009).
- ²⁶ A. Hackl, M. Vojta, and S. Sachdev, arXiv:0908.1088 (2009).
- ²⁷ B. Kyung, V. Hankevych, A.-M. Daré, and A.-M. S. Tremblay, *Phys. Rev. Lett.* **93**, 147004 (2004).
- ²⁸ A.-M. S. Tremblay, B. Kyung, and D. Sénéchal, *Low Temperature Physics*, **32**, 424 (2006) [*Fizika Nizkikh Temperatur*, **32**, 561 (2006)], arXiv:cond-mat/0511334.
- ²⁹ B. Kyung, S. S. Kancharla, D. Sénéchal, A.-M. S. Tremblay, M. Civelli, and G. Kotliar, *Phys. Rev. B* **73**, 165114 (2006).
- ³⁰ B. Kyung, G. Kotliar, and A.-M. S. Tremblay, *Phys. Rev. B* **73**, 205106 (2006).
- ³¹ S. S. Kancharla, B. Kyung, D. Sénéchal, M. Civelli, M. Capone, G. Kotliar, and A.-M. S. Tremblay, *Phys. Rev. B* **77**, 184516 (2008).
- ³² Michel Ferrero, Pablo S. Cornaglia, Lorenzo De Leo, Olivier Parcollet, Gabriel Kotliar, and Antoine Georges, *Phys. Rev. B* **80**, 064501 (2009).
- ³³ R. K. Kaul, A. Kolezhuk, M. Levin, S. Sachdev, and T. Senthil, *Phys. Rev. B* **75**, 235122 (2007).
- ³⁴ R. K. Kaul, Y. B. Kim, S. Sachdev, and T. Senthil, *Nature Physics* **4**, 28 (2008).
- ³⁵ T. Senthil, A. Vishwanath, L. Balents, S. Sachdev, and M. P. A. Fisher, *Science* **303**, 1490 (2004); T. Senthil, L. Balents, S. Sachdev, A. Vishwanath, and M. P. A. Fisher, *Phys. Rev. B* **70**, 144407 (2004).
- ³⁶ V. Galitski and S. Sachdev, *Phys. Rev. B* **79**, 134512 (2009).
- ³⁷ S. Sachdev, M. A. Metlitski, Y. Qi, and C. Xu, *Phys. Rev. B* **80**, 155129 (2009).
- ³⁸ Ar. Abanov, A. V. Chubukov and J. Schmalian, *Adv. Phys.* **52**, 119 (2003) and references therein.
- ³⁹ R. A. Cooper, Y. Wang, B. Vignolle, O. J. Lipscombe, S. M. Hayden, Y. Tanabe, T. Adachi, Y. Koike, M. Nohara, H. Takagi, Cyril Proust, and N. E. Hussey, *Science* **323**, 603 (2009).
- ⁴⁰ Nicolas Doiron-Leyraud, P. Auban-Senzier, S. Rene de Cotret, A. Sedeki, C. Bourbonnais, D. Jerome, K. Bechgaard, Louis Taillefer, arXiv:0905.0964.
- ⁴¹ F. D. M. Haldane, *Phys. Rev. Lett.* **61**, 1029 (1988).
- ⁴² N. Read and S. Sachdev, *Phys. Rev. Lett.* **62**, 1694 (1989); *Phys. Rev. B* **42**, 4568 (1990).

- ⁴³ R. K. Kaul, M. A. Metlitski, S. Sachdev and C. Xu, Phys. Rev. B **78**, 045110 (2008).
- ⁴⁴ M. Kamal and G. Murthy, Phys. Rev. Lett. **71**, 1911 (1993).
- ⁴⁵ O. I. Motrunich and A. Vishwanath, Phys. Rev. B **70**, 075104 (2004).
- ⁴⁶ M. Hermele, T. Senthil, M. P. A. Fisher, P. A. Lee, N. Nagaosa, and X.-G. Wen, Phys. Rev. B **70**, 214437 (2004).
- ⁴⁷ Sung-Sik Lee, Phys. Rev. B **80**, 165102 (2009).
- ⁴⁸ B. I. Shraiman and E. D. Siggia, Phys. Rev. Lett. **61**, 467 (1988).
- ⁴⁹ Y. M. Vilk and A.-M. S. Tremblay, Europhys. Lett. **33**, 159 (1996); J. Phys. I France **7**, 1309 (1997).
- ⁵⁰ K. Borejsza and N. Dupuis, Phys. Rev. B **69**, 085119 (2004).
- ⁵¹ H. J. Schulz, Phys. Rev. Lett. **65**, 2462 (1990); C. Zhou and H. J. Schulz, Phys. Rev. B **52**, R11557 (1995).
- ⁵² L. Balents and S. Sachdev, Annals of Physics **322**, 2635 (2007).
- ⁵³ X.-G. Wen and P. A. Lee, Phys. Rev. Lett. **80**, 2193 (1998).
- ⁵⁴ F. H. L. Essler and A. M. Tsvelik, Phys. Rev. B **65**, 115117 (2002).
- ⁵⁵ F. H. L. Essler and A. M. Tsvelik, Phys. Rev. B **71**, 195116 (2005).
- ⁵⁶ S. Sachdev and J. Ye, Phys. Rev. Lett. **69**, 2411 (1992); A. V. Chubukov, S. Sachdev, and J. Ye, Phys. Rev. B **49**, 11919 (1994).
- ⁵⁷ Kai-Yu Yang, T. M. Rice and Fu-Chun Zhang, Phys. Rev. B **73**, 174501 (2006).
- ⁵⁸ R. M. Konik, T. M. Rice, and A. M. Tsvelik, Phys. Rev. Lett. **96**, 086407 (2006).
- ⁵⁹ J. P. F. Leblanc, J. P. Carbotte, and E. J. Nicol, arXiv:0910.3577.
- ⁶⁰ T. Senthil, S. Sachdev, and M. Vojta, Phys. Rev. Lett. **90**, 216403 (2003); T. Senthil, M. Vojta, and S. Sachdev, Phys. Rev. B **69**, 035111 (2004).
- ⁶¹ S. Sachdev, *Quantum Phase Transitions*, Cambridge University Press (1999).
- ⁶² S. Sachdev, Phys. Rev. B **55**, 142 (1997); Phys. Rev. B **59**, 14054 (1999).
- ⁶³ C. L. Kane, P. A. Lee, and N. Read, Phys. Rev. B **39**, 6880 (1989).