



# DIGITAL ACCESS TO SCHOLARSHIP AT HARVARD

## Near-Infrared Spectroscopy Shows Right Parietal Specialization for Number in Pre-Verbal Infants

The Harvard community has made this article openly available. [Please share](#) how this access benefits you. Your story matters.

<b>Citation</b>	Hyde, Daniel C., David A. Boas, Clancy Blair, and Susan Carey. Forthcoming. Near-infrared spectroscopy shows right parietal specialization for number in pre-verbal infants. <i>NeuroImage</i> 52.
<b>Published Version</b>	<a href="https://doi.org/10.1016/j.neuroimage.2010.06.030">doi:10.1016/j.neuroimage.2010.06.030</a>
<b>Accessed</b>	February 18, 2015 6:13:12 PM EST
<b>Citable Link</b>	<a href="http://nrs.harvard.edu/urn-3:HUL.InstRepos:4314512">http://nrs.harvard.edu/urn-3:HUL.InstRepos:4314512</a>
<b>Terms of Use</b>	This article was downloaded from Harvard University's DASH repository, and is made available under the terms and conditions applicable to Other Posted Material, as set forth at <a href="http://nrs.harvard.edu/urn-3:HUL.InstRepos:dash.current.terms-of-use#LAA">http://nrs.harvard.edu/urn-3:HUL.InstRepos:dash.current.terms-of-use#LAA</a>

*(Article begins on next page)*

Running title: PARIETAL SPECIALIZATION FOR NUMBER IN INFANTS

Near-infrared spectroscopy shows right parietal specialization for number in pre-verbal infants

Daniel C. Hyde<sup>1†</sup>

David A. Boas<sup>2,3</sup>

Clancy Blair<sup>4</sup>

Susan Carey<sup>1</sup>

1. Laboratory for Developmental Studies, Department of Psychology, Harvard University
2. Athinoula A. Martinos Center for Biomedical Imaging, Massachusetts General Hospital
3. Department of Radiology, Harvard Medical School
4. Department of Applied Psychology, New York University

† Please address correspondence to:

Daniel C. Hyde

1118 WJH

Department of Psychology

Harvard University

33 Kirkland Street

Cambridge, MA 02138

Phone: 617-384-7906

Email: [dchye@fas.harvard.edu](mailto:dchye@fas.harvard.edu)

Keywords: near-infrared spectroscopy, infancy, cognitive development, number, brain specialization

## Abstract

Bilateral regions of the intraparietal sulcus (IPS) appear to be functionally selective for both rudimentary non-symbolic number tasks and higher-level symbolic number tasks in adults and older children. Furthermore, the ability to mentally represent and manipulate approximate non-symbolic numerical quantities is present from birth. These factors leave open whether the specialization of the IPS develops through the experience of learning a symbolic number system or if it is already specialized before symbolic number acquisition. Using the newly emerging technique of functional Near-Infrared Spectroscopy (fNIRS) over left and right parietal and lateral occipital regions, we show right parietal specialization for number in 6-month-old infants. These results extend the current literature in three ways: by successfully implementing an event-related NIRS design in infants, by showing parietal specialization for number occurs before the acquisition of language, and by suggesting number representation may be initially right lateralized and become bilateral through experience.

## 1. Introduction

Studies with non-human animals and pre-verbal infants suggest the presence of a non-verbal cognitive system for representing number (see Carey, 2009; Dehaene, 1997; Feigenson, Dehaene, & Spelke, 2004; Gallistel, 1993 for reviews). These numerical representations appear to be innate and abstract, as even newborns can match visual-spatial arrays of objects with auditory sequences of events on the basis of number (e.g. Izard, Sann, Spelke, & Streri, 2009). Although precision in the mental representation of number increases, these representations capture the cardinal values of sets approximately. Across all age ranges tested, discrimination ability is a function of numerical ratio of the sets; the ratio that can be discriminated improves with age, from 1:3 among newborns, 1:2 among 6-month-olds, 2:3 among 9 month olds, 3:4 among preschool children, and 7:8 among adults (e.g. Carey, 2009; Feigenson et al., 2004; Izard et al., 2009; Lipton & Spelke, 2003, 2004; Xu, Spelke, & Goddard, 2005; Xu & Spelke, 2000). The behavioral ratio limit of number comparison in infants, children, and adults has led some to conclude that non-verbal number representation is continuous over development (Carey, 2009; Feigenson et al., 2004; Hyde & Spelke, in press; Xu & Spelke, 2000). If so, we might expect continuity in the neural mechanism underlying number representation over development in the face of vast differences in experience and even number-related conceptual change (Feigenson et al., 2004; Hyde & Spelke, in press). A strong test of the continuity hypothesis would be to find evidence of a specialized brain region for number in pre-verbal infants that corresponds to that previously observed in verbal children and adults.

In adults, both symbolic and non-symbolic number tasks activate bilateral regions of the intraparietal sulcus (IPS) and damage to this region results in a loss of numerical abilities (e.g. Cantlon, Brannon, Carter, & Pelphey, 2006; Dehaene, Piazza, Pinel, & Cohen, 2003; Holloway,

Price, & Ansari, in press; Piazza, Pinel, Le Bihan, & Dehaene, 2007; Piazza, Izard, Pinel, Le Bihan, & Dehaene, 2004). This region appears to be specific for number, as it responds to number changes but not to other equally salient non-numerical changes (Cantlon et al., 2006; Piazza et al., 2004). However, it is unclear whether number-specialization of the parietal lobe develops through the experience of learning a symbolic number system or if it is already specialized before formal training and symbolic numerical experience. Thus far, localization of such a brain region in pre-verbal infants has been difficult given the spatial resolution of EEG/ERPs, the most common technique employed in measuring the neural correlates of higher-level cognition in infants (see Johnson, de Haan, Oliver, Smith, Hatzakis, Tucker, & Csibra, 2001). In fact, only one study to date has attempted to localize number representation in the infant brain using ERPs (Izard, Dehaene-Lambertz, & Dehaene, 2008). This study applied a source localization algorithm to ERP data and estimated the brain response to number originated from a widespread network of right lateralized brain regions including right inferior parietal, right frontal, and temporal regions. These estimates suggest some degree of specialization for number, as the number response dissociated from that observed for shape in ventral brain regions. While this study provides a rough approximation as to the brain areas that may be important to infants' number processing, the methods used are limited in their spatial resolution and possibly in accuracy and validity (see Luck, 2005 for a review). For instance, some question the current methods for localizing the source of the electrical activity that constitutes ERP data in infants because the current source localization algorithms rest, in part, on largely untested assumptions about infant brain anatomy (Johnson et al., 2001).

In contrast, the newly emerging technique of functional Near Infrared Spectroscopy (fNIRS), is a method with relatively precise spatial resolution (see Aslin & Mehler, 2005;

Minagawa-Kawai, Mori, Hebden, & Dupoux, 2008). NIRS allows estimation of the hemodynamic response on the immediate cortical surface at a maximum depth of about 2.5-3 centimeters from the light source. Thus, at least on the cortical surface, NIRS provides an alternative method with better spatial resolution to ERPs for measuring the cortical response in infants (see Aslin & Mehler, 2005 or Minagawa-Kawai et al., 2008 for reviews). Here we used fNIRS to estimate fluctuations in the hemodynamic response to number changes directly over occipital and parietal regions as a test of the continuity hypothesis of number representation. As a first step in exploring the specificity of the response, we also tested whether the brain region(s) that respond to number change also respond equally to another type of change, namely shape changes (Cantlon et al., 2006; Izard et al., 2008; Piazza et al., 2004).

## 2. Methods and Materials

### 2.1 Subjects

Approval for use of human subjects in this study was obtained through the Partners/MGH Human Research Committee and informed consent was obtained from a parent or guardian of each infant participant. Thirty-six infants 5.5 months to 6.5 months of age made up the final data set. An additional 38 infants came into the lab, but were not included in the analysis for the following reasons: failure to view at least eight deviant trials because of fussiness or inattentiveness (16 infants), failure to obtain good measurements due to improper fit of headgear causing it to move or slip off during the testing (5 infants), signal saturation due to excessive/dark hair (3 infants), failure to obtain good measurements due to excessive motion during the experiment (7 infants), or failure of experimenters to record the data due to technical difficulties with the equipment (7 infants). This attrition rate is characteristic of studies measuring the brain response to static visual stimuli in infants using ERPs (e.g. Berger, Tzur, &

Posner, 2006; Izard et al., 2008; Hyde, Jones, Porter, & Flom, 2010; Hyde & Spelke, in press; Libertus et al., 2009; Quinn, Westerlund, & Nelson, 2006).

## 2.2 Procedure

Infants viewed numerical arrays in an adaptation or oddball paradigm, similar to that used in previous studies of adults and older children (Cantlon et al., 2006; Hyde & Spelke, 2009, in press; Izard et al., 2008; Piazza et al., 2004). In this paradigm, subjects were presented with a sequence of novel images, a majority of which contained 16 circles (adaptation images).

Occasionally, embedded within the sequence of adaptation images, deviant test images appeared (randomly every 5<sup>th</sup>-11<sup>th</sup> image). The number-change group ( $n = 18$ ) saw occasional number-deviant test images of increasing (32 circles) and decreasing numerical magnitudes (8 circles).

The shape-change group ( $n = 18$ ) saw occasional shape-deviant test images of 16 squares and 16 triangles. To avoid boredom, presentation of stimuli was broken up into short blocks followed by short rest periods. Four deviant images appeared pseudo-randomly within each block with the constraints that the first test deviant occurred between 9-16.5 seconds after the start of the run and the last deviant image appeared at least 9 seconds before the end of the run. Each block contained new adaptation and deviant images.

## 2.3 Stimuli

Stimuli were white shapes on a gray background that appeared sequentially for 500 milliseconds and were separated by a gray fixation screen that appeared for a randomly chosen time between 500-1000 milliseconds. Images were constructed using an automated program designed to control for non-numerical parameters such as total area, individual item size, and density across the entire set of images (see [www.unicog.org](http://www.unicog.org) for documentation). Specifically, the intensive parameters (individual item size and inter-item spacing) of the adaptation images

varied with number while the extensive parameters (total occupied area and total luminance) varied randomly within a fixed distribution but were equated on average across adaptation images. In the test images, the reverse was true. Crucially, the smallest and largest values of the distribution used for the extensive parameters of the adaptation images were the smallest and largest values presented in test images. This means that all individual continuous values presented in the test images were equally familiar between experimental conditions, as they were presented equally often in the adaptation images (for more details of controls see Hyde & Spelke, 2009; Izard et al., 2008, Piazza et al., 2004).

#### 2.4 Apparatus

The hemodynamic response was measured over bilateral occipital and parietal sites with Near-Infrared Spectroscopy (NIRS) using a continuous wave machine that emitted light at 690 and 830 nm wavelengths. Light was projected to and detected from the infants' head using fiber optic cables attached to a custom head probe made out of neoprene material. The head probe was fitted to the head by Velcro adjustments on the probe itself and further secured to the head by an adjustable chin strap and two sports-style headbands which were placed over the probe after initial Velcro adjustment. The probe had two light sources and four light detectors. Detectors were spaced 2.5 cm above and below the two sources and placed on the right and left posterior scalp (see Figure 1). The probe was placed over left and right lateral occipital and inferior parietal scalp sites according to the International 10-20 EEG coordinates (Okamoto et al., 2004). Specifically, the head probe was centered with respect to the Oz reference point on each infant (see Figure 1). This placed the left occipital detector 2 cm to the left of Oz and the right occipital detector 2 cm to the right of Oz, locating them just lateral of 10-20 points O1/O2



based on the average head measurements of children this age ([www.cdc.gov](http://www.cdc.gov)). Parietal detectors were 5 cm above the occipital detectors placing them just under the parietal 10-20 points P3/P4.

## 2.5 Data reduction and analysis

The data processing and analysis routine employed is similar to that used in previous infant NIRS studies (Wilcox et al., 2008, 2009; Bortfeld et al., 2009; Pena et al., 2003). All processing was done using HomER and EasyNIRS (available at [www.nmr.mgh.harvard.edu/PMI/resources/homer/home.htm](http://www.nmr.mgh.harvard.edu/PMI/resources/homer/home.htm)). Raw signals were acquired at 10 Hz. Data were converted to relative levels of oxy-, deoxy-, and total hemoglobin using the modified Beer-Lambert law (e.g. Strangman, Boas, & Sutton, 2002). Data were filtered offline at 3 Hz and then subjected to principal components analysis to remove large physiological and motion artifacts. The brain response was assessed using a 10 second time window surrounding the presentation of test images. The 2 seconds before the event was considered the baseline and subtracted from the 8 seconds following to assess the change in hemodynamic response. Individual trial epochs were rejected automatically if they contained more than 5% intensity change over a 10 ms sample. Additionally, trials in which infants became fussy, cried, or were inattentive to the displays were rejected, as indicated by the behavioral notes. Infants that did not complete at least 8 acceptable trials were excluded from the analysis (see subjects section 2.1 for breakdown).

## 2.5 Statistical Analysis

Analysis focused on relative OxyHb concentration as previous studies have found it to be an informative marker of cognitive processing (e.g. Baird, Kagen, Gaudette, Walz, Hershlag, & Boas, 2002; Bortfeld, Fava, Boas, 2009; Grossmann, Johnson, Lloyd-Fox, Blasi, Deligianni, Elwell, & Csibra, 2008; Minagawa-Kawai et al., 2008; Pena et al., 2003; Wilcox, Bortfeld, Woods, Wruck, & Boas, 2008; Wilcox, Bortfeld, Woods, Wruck, Armstrong, & Boas, 2009).

First, the OxyHb responses at all four detectors were tested relative to baseline for significant responses during two time windows characterizing the first and second half of time between test trials (2-5 seconds/5-8 seconds) using a one sample t-test. To compare the relative response across experiments, we performed a mixed ANOVA with the within-subjects repeated factor of Brain Region (Occipital or Parietal) and the between subjects factor of Change Condition (number or shape change). Post hoc testing followed up with paired samples t-test comparing Brain Region (Occipital and Parietal) within each Change Type (number and shape) separately.

### 3. Results and Discussion

Number-deviant images elicited a significant increase in Oxyhemoglobin concentration (OxyHb) relative to baseline in the right parietal region alone (see Figure 2). This response was at a maximum between 2-5 seconds after stimulus onset ( $t(17) = 2.27, p = .036$ ). Based on our probe placement, the localization of the parietal detector showing the response to number is consistent with right IPS activity seen in adults (e.g. Cantlon et al., 2006; Piazza et al., 2004). In contrast, shape-deviant images elicited an increase in OxyHb concentration relative to baseline in the right lateral occipital region alone. This response was at a maximum between 5-8 seconds after stimulus onset ( $t(17) = 2.69, p = .016$ ). Based on our probe placement, the localization of the lateral occipital detector is consistent with LOC (lateral occipital complex) activation seen for shape in adults with fMRI (e.g. Cantlon et al., 2006; Grill-Spector & Malach, 2001; Kanwisher, Woods, Iacoboni, & Mazziotta, 1997; Piazza et al., 2004; Shuman & Kanwisher, 2004).

Because there were no effects of either shape change or number change in our left hemisphere probes, these were not analyzed further. A more focused analysis examined whether the responses in the right lateralized regions to shape changes or to number changes

were significantly different from each other. A multi-factor ANOVA examining the effects of the within-subjects variable of Brain Region (occipital vs. parietal) and the between-subjects variable of Change Type (shape vs. number) on change in OxyHb concentration revealed a significant interaction between Brain Region and Change Type ( $F(1, 17) = 6.87, p = .013$ , partial eta squared = .17). Post-hoc tests revealed that this interaction was due to number changes eliciting a larger hemodynamic response in right parietal areas compared to right occipital areas ( $t(17) = -2.49, p = .024$ ), whereas the difference (in the other direction) between brain regions in the case of shape changes was not significant ( $t(17) = 1.01, p = .326$ ) (see Figure 3).

## 5. Conclusions

Our application of NIRS to study infant numerical cognition makes four main contributions. First, we successfully implemented an event-related adaptation design with rapid stimulus presentation (< 1 second), in contrast to the slow, block-designs employed by most using NIRS with infants to date (e.g. Aslin & Mehler, 2005; Baird et al., 2002; Bortfeld et al., 2009; Grossmann et al., 2008; Minagawa-Kawai et al., 2008; Pena et al., 2003; Wilcox et al., 2008; Wilcox et al., 2009). The success of this paradigm with infants will enable researchers to expand the range of stimuli used and corresponding research questions asked to those that require rapid stimulus presentation and/or more subtle differences between experimental conditions. For example, and second, we found that the response to shape change occurred later (5 to 8 sec. after the change), relative to that for number change (2 to 5 sec. after the change). Block designs, in contrast, may not be sensitive to such subtle timing differences in the response. One interpretation of this difference is that the occipital response to shape change is the result of feedback rather than initial processing of shape. This interpretation could be confirmed through

the use of a NIRS system with more scalp coverage, allowing simultaneous monitoring of more brain regions.

Third, our results overcome the previous limits to brain localization of number in infants by using a technique with relatively precise spatial resolution (Hyde & Spelke, in press; Izard et al., 2008; Libertus, Pruitt, Woldorff, & Brannon, 2009) and show that the right inferior parietal region is, in fact, functionally responsive to number by 6 months of age. Furthermore, our results, coupled with those from previous fMRI studies of adults and older children and ERP localization research with infants, suggest that the neural response to number in the right parietal lobe is continuous across development despite vast differences in training and experience with symbolic numbers between pre-verbal infants, older children, and adults (Cantlon et al., 2006; Piazza et al., 2004; Izard et al., 2008) That is, the same experimental conditions used in the previous studies with older children and adults reveal a similar degree of specialization for number in the infant brain that arises independently of formal numerical experience, education, or even language.

Fourth, in contrast to bilateral activity routinely observed in non-symbolic number tasks with adults and older children (Cantlon et al., 2006; Piazza et al., 2004), the brain response to number in infants was only observed in the right hemisphere. These results accord with the right lateralization estimates from scalp ERP data in response to number in infants (Izard et al., 2008). It should be noted that our measurements were restricted to the cortical surface, given the limitations of NIRS to probe deeper cortical activity; our measurements were also limited by the significant variations in brain/head size between infants at this age (see [www.cdc.gov](http://www.cdc.gov)). Given these limitations, it is possible that activity may have been present in other portions of the monitored regions but not detected by our measurements. Nonetheless, previous fMRI studies

comparing older children and adults have shown age-related increases in left IPS activity during both symbolic and non-symbolic numerical tasks, suggesting number-specific activation may be initially isolated to the right hemisphere and becomes bilateral over development (Ansari & Dhital, 2006; Cantlon et al., 2004; Cohen-Kadosh, Lammertyn, & Izard, 2008). Our results build on these to provide the strongest evidence to date that numerical processing is initially lateralized to the right hemisphere. Future work should investigate exactly what experiences drive increases in left IPS activity over development.

## 6. References

- Ansari, D. & Dhital, B. (2006). Age-related changes in the activation of the intraparietal sulcus during non-symbolic magnitude processing: An event-related functional magnetic resonance imaging study. *Journal of Cognitive Neuroscience*, *18(11)*, 1820-1828.
- Aslin, R.N. & Mehler, J. (2005). Near-infrared spectroscopy for functional studies of brain activity in human infants: promise, prospects, and challenges. *Journal of Biomedical Optics*, *10*, 011009.
- Baird, A.A., Kagen, J., Gaudette, T., Walz, K.A., Hershlag, N., & Boas, D.A. (2002). Frontal lobe activation during object permanence: Data from near-infrared spectroscopy. *NeuroImage* *16*, 1120-1126.
- Berger, A., Tzur, G., & Posner, M.I. (2006). Infant brains detect arithmetic errors. *Proceedings of the National Academy of Sciences of the U S A*, *103*, 12649-12653.
- Bortfeld, H., Fava, E. and Boas, D.A. (2009). Identifying cortical lateralization of speech processing in infants using near-infrared spectroscopy. *Developmental Neuropsychology*, *34(1)*, 52-65.
- Cantlon, J. F., Brannon, E. M., Carter, E. J., and Pelphey, K. A. (2006). Functional imaging of numerical processing in adults and four-year-old children. *PLoS Biology*, *4(5)*, 0844-0854.
- Carey, S. (2009). *The Origin of Concepts*. Oxford University Press: New York
- Cohen Kadosh, R., Lammertyn, J., & Izard, V. (2008) Are numbers special? An overview of chronometric, neuroimaging, developmental and comparative studies of magnitude representation. *Progress in Neurobiology*, *84(2)*,132-47.
- Dehaene, S., Piazza, M., Pinel, P., & Cohen, L. (2003). Three parietal circuits for number

- processing. *Cognitive Neuropsychology*, 20,487-506.
- Dehaene, S. (1997). *The Number Sense*. Oxford University Press: New York.
- Feigenson, L., Dehaene, S., & Spelke, E.S. (2004). Core systems of number. *Trends in Cognitive Science*, 8, 307-314.
- Gallistel, C.R. (1993). *The Organization of Learning*. MIT Press: Cambridge, MA.
- Grossmann, T., Johnson, M. H., Lloyd-Fox, S., Blasi, A., Deligianni, F., Elwell, C., & Csibra, G. (2008). Early cortical specialization for face-to-face communication in human infants. *Proceedings of the Royal Society B: Biological Sciences*, 275, 2803-2811.
- Grill-Spector, K., & Malach, R. (2001). fMR-adaptation: a tool for studying the functional properties of human cortical neurons. *Acta Psychologica*, 107, 293-321.
- Holloway, I.D., Price, G.R., & Ansari, D. (in press). Common and segregated neural pathways for the processing of symbolic and nonsymbolic numerical magnitude: An fMRI study. To appear in *Neuroimage*.
- Hyde, D.C., Jones, B.L., Porter, C.L., & Flom, R. (2010). Visual stimulation enhances auditory processing in 3-month-old infants and adults. *Developmental Psychobiology*, 52(2), 181-189.
- Hyde, D.C. & Spelke, E.S. (2009). All numbers are not equal: An electrophysiological investigation of large and small number representations. *Journal of Cognitive Neuroscience*, 21, 1039-1053.
- Hyde, D.C. & Spelke, E.S. (in press). Neural signatures of number processing in human infants: Evidence for two core systems underlying non-verbal numerical cognition. To appear in *Developmental Science*.
- Izard, V., Dehaene-Lambertz, G., & Dehaene, S. (2008). Distinct cerebral pathways for object

- identity and number in 3-month-old infants. *PLoS Biology*, 6(11),1-11.
- Izard, V., Sann, C., Spelke, E.S., & Streri, A. (2009). Newborn infants perceive abstract numbers. *Proceedings of the National Academy of Sciences of the U S A*, 106(25):10382—10385.
- Johnson, M.H., de Haan, M., Oliver, A., Smith, W., Hatzakis, H., Tucker, L.A., & Csibra, G. (2001). Recording and analyzing high-density event-related potentials with infants using the geodesic sensor net. *Developmental Neuropsychology*, 19, 295-323.
- Kanwisher, N., Woods, R.P., Jacoboni, M., & Mazziotta, J.C. (1997). A locus in human extrastriate cortex for visual shape analysis. *Journal of Cognitive Neuroscience*, 9, 133-142.
- Libertus, M.E., Pruitt, L.B., Woldorff, M.G., & Brannon, E.M. (2009). Induced alpha-band oscillations reflect ratio-dependent number discrimination in the infant brain. *Journal of Cognitive Neuroscience*, 21(12), 2398-2406.
- Lipton, J. S., & Spelke, E. S. (2003). Origins of number sense: Large-number discrimination in human infants. *Psychological Science*, 14, 396–401.
- Lipton, J. S., & Spelke, E. S. (2004). Discrimination of large and small numerosities by human infants. *Infancy*, 5, 271–290.
- Luck, S.J. (2005). *An Introduction to the Event-related Potential Technique*. MIT Press: Cambridge, MA.
- Minagawa-Kawai, Y., Mori, K., Hebden, J.C., & Dupoux, E. (2008). Optical imaging of infants' neurocognitive development: Recent advances and perspectives. *Developmental Neurobiology*, 68(6), 712-728.
- Okamoto et al. (2004). Three-dimensional probabilistic anatomical cranio-cerebral correlation



- via the international 10-20 system oriented for transcranial functional brain mapping. *Neuroimage*, 21, 99-111.
- Pena, M. et al., (2003). Sounds and silence: An optical topography study of language recognition at birth. *Proceedings of the National Academy of Sciences of the U S A*, 100 (20), 11702-11705.
- Piazza, M., Pinel, P., Le Bihan, D., & Dehaene, S. (2007). A Magnitude Code Common to Numerosities and Number Symbols in Human Intraparietal Cortex. *Neuron*, 53(2), 293-305.
- Piazza, M., Izard, V., Pinel, P., Le Bihan, D., & Dehaene, S. (2004). Tuning curves for approximate numerosity in the human intraparietal sulcus. *Neuron*, 44, 547-555.
- Quinn, P.C., Westerlund, A., & Nelson, C.A. (2006). Neural markers of categorization in 6-month old infants. *Psychological Science*, 17, 59-66.
- Shuman, M. and Kanwisher, N. (2004). Numerical specificity in the human parietal lobe: Tests of representational generality and domain specificity. *Neuron*. 44 (3) 557-69.
- Strangman, G., Boas, D.A., & Sutton, J.P. ( 2002). Non-invasive neuroimaging using near-infrared light. *Biological Psychiatry*, 52, 679-693.
- Wilcox, T., Bortfeld, H., Woods, R., Wruck, E., Armstrong, J. and Boas, D. (2009). Hemodynamic changes in the infant cortex during the processing of featural and spatiotemporal information. *Neuropsychologia* 47, 657-662.
- Wilcox, T., Bortfeld, H., Woods, R., Wruck, E. and Boas, D.A. (2008). Hemodynamic response to featural changes in the occipital and inferior temporal cortex in infants: a preliminary methodological exploration. *Developmental Science*, 11(3), 361-70.
- Xu, F., Spelke, E. S., & Goddard, S. (2005). Number sense in human infants. *Developmental*

*Science*, 8, 88–101

Xu, F., & Spelke, E.S. (2000). Large number discrimination in 6-month-old infants. *Cognition*, 74, B1-B11.

**Acknowledgements.** We thank Christina Zhou, Ben Smith, Clark Van Den Berghe, and Andy Peters for help with data collection. We are grateful to Juliette Selb and Tina Lloyd for their help with their technical assistance. Finally, we thank Elizabeth Spelke and the Lab for Developmental Studies for their feedback and support during this project.

**Author Contributions.** D.C.H collected, analyzed the data with help from D.A.B, and wrote the manuscript. All authors helped design the experiment and contributed feedback to the final manuscript.

We declare no competing financial interests between authors.

Correspondence and requests for materials should be addressed to dchye@fas.harvard.edu.

### Figure Captions

**Figure 1.** Schematic of optical probe and placement in reference to the international 10-20 EEG system. (A). Lateral view of the 10-20 measurements and superimposed probe placement. The red circle represents the light emitter and the blue squares represent the light detectors. (B). Top view of 10-20 system and superimposed probe placement. (C). Schematic representation of the probe including distances between light emitters and detectors.

**Figure 2.** Summary of fNIRS results for number and shape changes. (A). Hemodynamic response observed for number changes from 2 seconds before to 8 seconds after deviant image onset. The “\*” indicates a significant difference from baseline ( $p < .05$ ). Y axis reflects relative change in oxygenated hemoglobin concentration (micromolars) (B). Hemodynamic response observed for shape changes on the same scale.

**Figure 3.** Relative OxyHb response for number changes and shape changes at right occipital and parietal sites. Y axis reflects relative change in oxygenated hemoglobin concentration (micromolars) relative to baseline. The “\*” indicates statistical significance ( $p < .05$ ).

Figure 1.

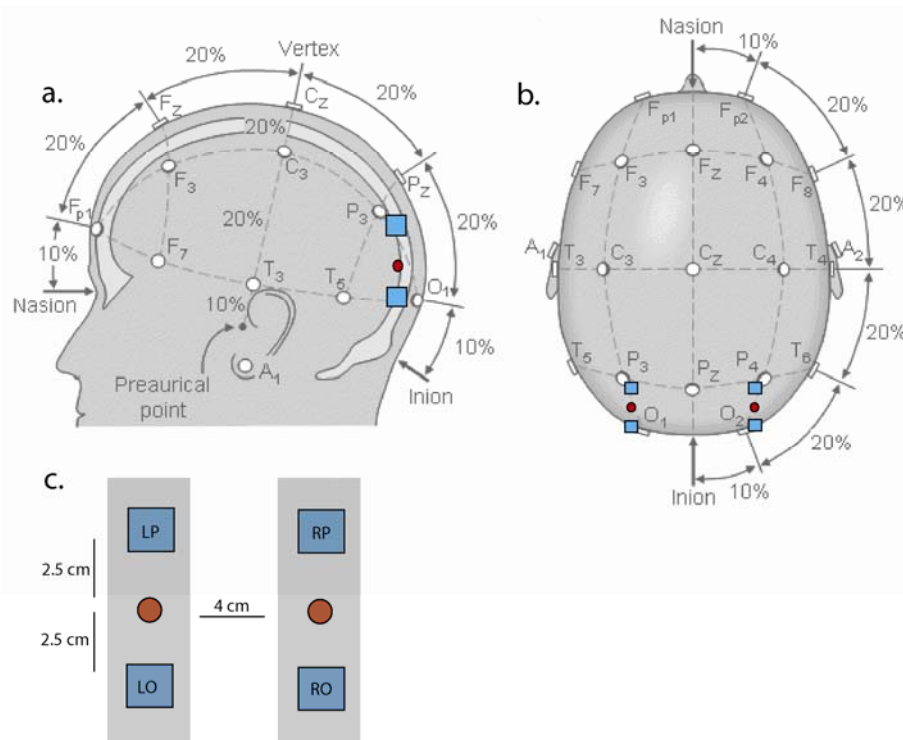


Figure 2.

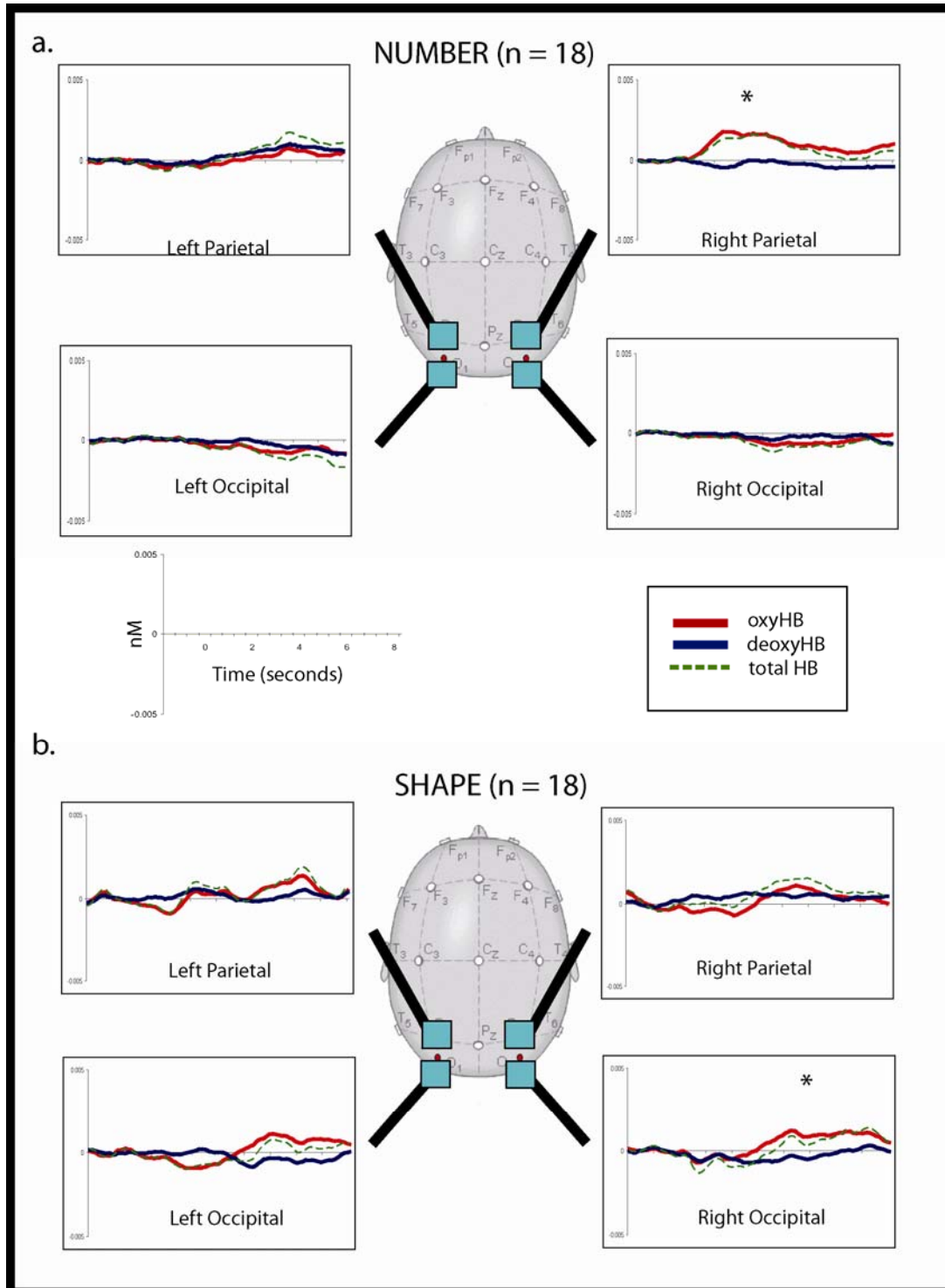


Figure 3.

