

Weierstraß-Institut
für Angewandte Analysis und Stochastik
Leibniz-Institut im Forschungsverbund Berlin e. V.

Preprint

ISSN 2198-5855

Localized instabilities and spinodal decomposition
in driven systems in the presence of elasticity

Esteban Meca¹, Andreas Münch², Barbara Wagner¹

submitted: April 10, 2017

¹ Weierstrass Institute

Mohrenstr. 39

10117 Berlin

Germany

E-Mail: esteban.meca@wias-berlin.de

barbara.wagner@wias-berlin.de

² Mathematical Institute

Andrew Wiles Building, Woodstock Road

Oxford, OX2 6GG

UK

E-Mail: muench@maths.ox.ac.uk

No. 2387

Berlin 2017



2008 *Physics and Astronomy Classification Scheme*. 68.43.Jk, 81.10.Aj, 81.15.Aa.

Key words and phrases. Stability Analysis, Interface Dynamics, Asymptotic Analysis, Numerical Methods.

This research was carried out in the framework of MATHEON supported by the Einstein Foundation Berlin.

Edited by
Weierstraß-Institut für Angewandte Analysis und Stochastik (WIAS)
Leibniz-Institut im Forschungsverbund Berlin e. V.
Mohrenstraße 39
10117 Berlin
Germany

Fax: +49 30 20372-303
E-Mail: preprint@wias-berlin.de
World Wide Web: <http://www.wias-berlin.de/>

Localized instabilities and spinodal decomposition in driven systems in the presence of elasticity

Esteban Meca, Andreas Münch, Barbara Wagner

Abstract

We study numerically and analytically the instabilities associated with phase separation in a solid layer on which an external material flux is imposed. The first instability is localized within a boundary layer at the exposed free surface by a process akin to spinodal decomposition. In the limiting static case, when there is no material flux, the coherent spinodal decomposition is recovered. In the present problem stability analysis of the time-dependent and non-uniform base states as well as numerical simulations of the full governing equations are used to establish the dependence of the wavelength and onset of the instability on parameter settings and its transient nature as the patterns eventually coarsen into a flat moving front. The second instability is related to the Mullins-Sekerka instability in the presence of elasticity and arises at the moving front between the two phases when the flux is reversed. Stability analyses of the full model and the corresponding sharp-interface model are carried out and compared. Our results demonstrate how interface and bulk instabilities can be analysed within the same framework which allows to identify and distinguish each of them clearly. The relevance for a detailed understanding of both instabilities and their interconnections in a realistic setting are demonstrated for a system of equations modelling the lithiation/delithiation processes within the context of Lithium ion batteries.

1 Introduction

Localized instabilities in phase transformations in non-equilibrium systems have been investigated for a long time. Possibly the most well-known example is the Mullins-Sekerka interfacial instability of solidifying systems [1, 2], which has also been studied in the presence of elasticity for coherent interfaces [3, 4]. Similar interaction of a diffusional instability with elasticity have also been intensely studied and are well-known as the Asaro-Tiller-Grinfeld instability [5–7] resulting from the competition of surface diffusion and stress relaxation.

Spinodal decomposition in the bulk is another common phenomenon that can be understood as an instability in phase-separating systems. The celebrated theory of Cahn and Hilliard [8, 9] gave a foundation for the understanding of this phenomenon as a bulk instability. Through spinodal decomposition a system phase-separates, e.g. in a binary system regions with a higher concentration of solute are instantaneously created. While it is well known that the Cahn-Hilliard approach has limitations [10], the approach remains very useful for early stages of spinodal decomposition, allowing the incorporation of additional effects, that may facilitate or suppress the instability. Most common in material science are effects of elasticity, anisotropy [9, 11], or surface induced spinodal decomposition [12, 13]. In addition, the coupling of spinodal decomposition with elasticity in thin films has also received much attention in connection with defects [14–16] and also with surface instabilities, in particular the Asaro-Tiller-Grinfeld instability [17].

Recently, the study of the interaction of spinodal decomposition and elasticity has intensified due to newly discovered localization effects. Phase-field and KMC simulations of thin films have shown that

the instability tends to be localized first near the free surface of the film [18–21], rediscovering a result by Ipatova et al. [14], who showed that due to elastic effects spinodal decomposition localizes exponentially close to the surface. Moreover, this exponentially-localized surface mode can become unstable even when the bulk is stable [22]. The concentrations at which this mode is unstable lay between the classical (chemical) spinodal and the spinodal modified by elastic effects (coherent spinodal). This type of localized instabilities seem to underly a number of fundamental processes such as the stability of grain boundaries in phase-separating systems that is currently receiving much attention [23, 24], where an understanding of localized instabilities in the presence of coherency strain is of capital importance. The motivation of the present study concerns an instability during the lithiation/delithiation process of phase-changing electrodes used for example in Lithium-ion batteries [25].

It has long been known that electrode materials such as LiFePO_4 undergo phase separation when lithiated or delithiated, and this has been studied using extensions of the Cahn-Hilliard model [26, 27]. Some promising high capacity electrode materials such as amorphous silicon (a-Si), is known to also undergo two-phase lithiation [28]. However doubts remain regarding the mechanical properties, which have been tested for instance in the experiments of Sethuraman et al. [29]. Recently, it has been conjectured that phase separation should be taken into account to explain the observed mechanical properties [25], and a simplified model for the experimental setup in [29] was developed. The model describes a thin layer of a-Si that has been grown on a crystalline substrate and is lithiated from the free surface. The increasing concentration of lithium in the layer causes the volume of the layer to increase, and when the concentration is high enough the system undergoes phase separation and a highly lithiated phase is created near the free surface, showing a periodic structure for some values of the system parameters. As the pattern moves into the amorphous layer under continued flux it coarsens into a flat front that moves into the layer. If the flux is reversed this front undergoes an interfacial instability. Since these instabilities emerge within non-uniform driven systems it is necessary to investigate the connection of localization of instabilities near the free surface with interfacial instabilities using a unified framework.

In order to study this instability we use a viscous Cahn-Hilliard model [30] to model phase separation, and couple the dynamics of the concentration with elasticity using what is usually referred to as the Larché-Cahn prescription [31–33]. We also use the sharp-interface limit of this model [34], which is valid once phase separation has taken place. Comparing the results of the phase-field model with the sharp-interface model allows us to on the one hand validate the stability calculation and on the other hand show how the localization of the instability occurs in the phase-field model.

We solve numerically the model in two dimensions and study the development of an instability related with spinodal decomposition, but in the presence of a driving flux that further confines it to the free surface. We study the instability by computing the eigenvalues and eigenvectors of the linearized system for a laterally unbounded layer, in the "frozen-time" adiabatic approximation [35, 36]. Additionally we study the stability of a receding front using the same technique and relate it with the stability of the front as described by the sharp-interface model.

In Section 2 we give a summary description of the model used, and in Section 3 we study the linearized model. In Section 4 we give a brief description of the numerics, and in Sections 5 and 6 we present the numerical results of the direct simulation and the different stability calculations and discuss them.

2 The Model

In this section we introduce the model used. This is a model for the lithiation of a layer of amorphous silicon that has been described elsewhere[25], and hence it is not our goal to describe in detail the derivation of the model.

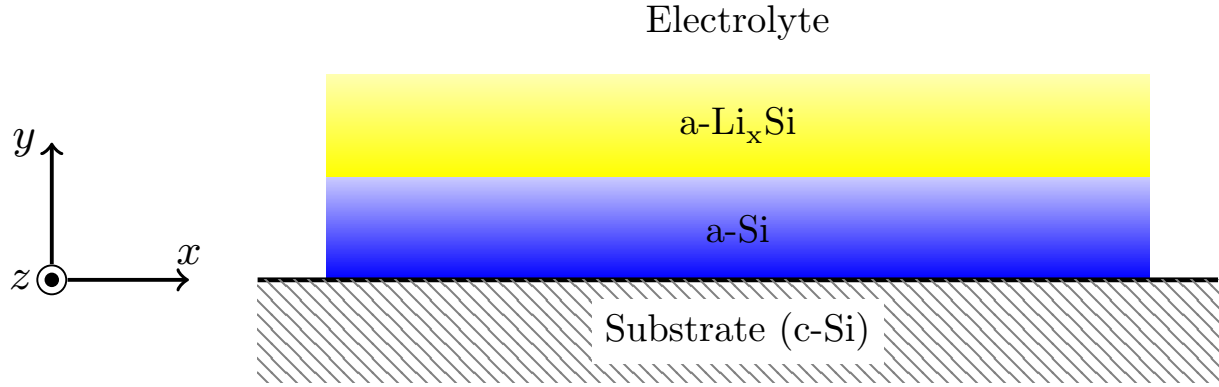


Figure 1: Scheme of the amorphous silicon layer.

In our description, we have c , a dimensionless concentration of solute (the local molar fraction of lithium) inside of a layer of amorphous silicon (see Fig. 1). We assume that the deformations are small, and hence we can use linear elasticity. The strain tensor ϵ_{ij} is defined as

$$\epsilon_{ij} = \frac{1}{2} (\partial_j u_i + \partial_i u_j), \quad (2.1)$$

in terms of the deformation \mathbf{u} , with the indices $1 \leq i, j \leq 3$. We will use nevertheless the plane strain approximation, and hence $u_z = 0$ and all derivatives with respect to z cancel. The elastic energy is defined as

$$W = \frac{1}{2} C_{ijkl} (\epsilon_{ij} - \epsilon_{ij}^0) (\epsilon_{kl} - \epsilon_{kl}^0), \quad (2.2)$$

where the summation is implied, and C_{ijkl} is the fourth order elasticity tensor. Since the material of interest is amorphous we will assume it to be fully isotropic. The stress-free strain or eigenstrain is defined as $\epsilon_{ij}^0 = \alpha h(c) \delta_{ij}$, where the constant α is the maximum stress-free strain and $h(c)$ is an interpolating monotone function such that $h(0) = 0$ and $h(1) = 1$. The stress is defined as follows:

$$\sigma_{ij} = \frac{\partial W}{\partial \epsilon_{ij}} = C_{ijkl} (\epsilon_{kl} - \epsilon_{kl}^0) = \frac{E(c)}{1 + \nu} \left[\epsilon_{ij} - \epsilon_{ij}^0 + \frac{\nu}{1 - 2\nu} (\epsilon_{kk} - \epsilon_{kk}^0) \delta_{ij} \right], \quad (2.3)$$

where $E(c)$ is Young's modulus (which depends on the concentration) and ν is Poisson's ratio. For the problem at hand, we assume that Young's modulus depends on the concentration, with the extreme values being for pure amorphous silicon $E(0) = E_{\text{Si}}$ and for fully lithiated a-Si $E(1) = E_{\text{Li}_x\text{Si}}$. The value of ν is not expected to show a strong dependence with respect to the concentration, in accordance with Shenoy et al. [37].

The total free energy of the layer reads:

$$\mathcal{F} = \int_{\Omega} \left(\frac{1}{2} \gamma \varepsilon |\nabla c|^2 + \frac{\gamma}{\varepsilon} f(c) + W(\epsilon_{ij}, c) \right) dx dy, \quad (2.4)$$

where the homogeneous free energy density $f(c) = c^2(1-c)^2/4$ and $W(\epsilon_{ij}, c)$ is the elastic energy density as defined in Eq. (2.2). The constant γ carries the dimensions of energy over length and the

parameter ϵ is proportional to the interface thickness. The chemical potential reads

$$\mu = \frac{\delta \mathcal{F}}{\delta c} = -\gamma \epsilon \nabla^2 c + \frac{\gamma}{\epsilon} f'(c) + \partial_c W(\epsilon_{ij}, c), \quad (2.5)$$

and we use the following equation for the dynamics of the concentration:

$$\partial_t c = M \nabla^2 (\mu + \chi \epsilon \partial_t c), \quad (2.6)$$

where M is a constant mobility and χ is the viscosity parameter. Eq. 2.6 would have the familiar form of the Cahn-Hilliard equation but for the last term, the viscous term [30]. While this term is not commonly used in Cahn-Hilliard-like models, it is important as it captures part of the non-equilibrium kinetics of the interface. Gurtin [38] showed that such a term appears naturally when introducing $\partial_t c$ in the list of constitutive variables, and it has been shown to guarantee a positive entropy production at the interface in the sharp-interface limit [39]. The chosen scaling from that term with ϵ follows similarly from the sharp-interface limit of this model (see [34]). Eqs. 2.6, 2.5 together with the mechanical equilibrium condition

$$\partial_j \sigma_{ij} = 0, \quad (2.7)$$

are the equations that define the dynamics of our system.

In order to nondimensionalize the system, we introduce a lengthscale H_0 that corresponds to the height of the layer in the absence of lithium. The resulting system has the following form (see [25] for the details of the scalings):

$$\partial_t c = \nabla^2 (\mu + \epsilon \beta \partial_t c), \quad (2.8a)$$

$$\mu = -\epsilon \nabla^2 c + \frac{1}{\epsilon} f'(c) + \xi \partial_c W(\epsilon_{ij}, c), \quad (2.8b)$$

$$\partial_j \sigma_{ij} = 0, \quad (2.8c)$$

$$\sigma_{ij} = 2G (\epsilon_{ij} - \epsilon_{ij}^0) + \frac{2\nu}{1-2\nu} G (\epsilon_{kk} - \epsilon_{kk}^0) \delta_{ij}, \quad (2.8d)$$

where the constitutive laws for the nondimensional shear modulus $G = E(c)/E_{\text{Si}}$ and stress-free strain ϵ_{ij}^0 are specified as

$$G = 1 + g(c) \left(\frac{E_{\text{Li}_x\text{Si}}}{E_{\text{Si}}} - 1 \right), \quad \epsilon_{ij}^0 = h(c) \delta_{ij},$$

and the derivative of the nondimensional elastic energy takes the form

$$\begin{aligned} \partial_c W(\epsilon_{ij}, c) &= \frac{(1-\nu)G'}{1-2\nu} (\partial_1 u_1^2 + \partial_2 u_2^2) + \frac{1}{2} G' (\partial_1 u_2 + \partial_2 u_1)^2 \\ &+ \frac{2\nu G'}{1-2\nu} \partial_1 u_1 \partial_2 u_2 - \frac{2(1+\nu)}{1-2\nu} (h(c)G)' \nabla \cdot \mathbf{u} \\ &+ \frac{3(1+\nu)}{1-2\nu} (h(c)^2 G)'. \end{aligned} \quad (2.8e)$$

Here, $h(c)$ and $g(c)$ are interpolating functions such that $g(0) = h(0) = 0$ and $g(1) = h(1) = 1$. For the boundaries in contact with the substrate, we will take a no-flux/no-deformation boundary condition:

$$\mathbf{u} = 0, \quad \mathbf{n} \cdot \nabla c = 0, \quad \mathbf{n} \cdot \nabla \mu = 0, \quad (2.8f)$$

where \mathbf{n} is the normal vector to the surface. In the case of the boundaries in contact with the electrolyte, we take a no-traction boundary condition and, following [40], assume a consistent no-flux condition for c (also known as *variational boundary condition*), together with a constant flux boundary condition

$$\sigma \cdot \mathbf{n} = 0, \quad \mathbf{n} \cdot \nabla c = 0, \quad \mathbf{n} \cdot \nabla \mu = K(\mu) = F. \quad (2.8g)$$

The function $K(\mu)$, which in our case is simply equal to the constant F , is in general a nonlinear function of the chemical potential, and relates the absorption into the layer with the outer electrical potential. While the phenomenological Butler-Volmer relation is commonly used (see e.g. [41]) but there exist more rigorous approaches [27]. In our case, the constant F corresponds to a galvanostatic lithiation regime.

The problem depends on the following non-dimensional groups:

$$\beta = \frac{\chi M}{H_0}, \quad F = \frac{F_r H_0^2}{M \gamma}, \quad \xi = \frac{H_0 E_{\text{Si}} \alpha^2}{2(1 + \nu) \gamma}, \quad (2.9)$$

where F_r is the dimensional flux. The previous parameters, together with the elastic ratio $E_{\text{Li}_x\text{Si}}/E_{\text{Si}}$, Poisson's ratio ν and ϵ are the complete set of non-dimensional parameters. Note that ξ is the ratio of elastic to interfacial energies.

For the numerical simulations we have used $E_{\text{Li}_x\text{Si}}/E_{\text{Si}} = 0.44$ and $\nu = 0.25$, in accordance with the calculations from Shenoy et al. [37].

3 Stability Analysis

In this section, we consider the case of a laterally unbounded layer that is delimited by $y = 0$ and $y = 1$. We derive the system of equations that a linear perturbation about a basis solution given by a one-dimensional displacement and concentration profile fulfils. Specifically, we assume a basis solution of the form

$$u_x(x, y, t) = 0, \quad u_y(x, y, t) = u_{y,0}(y, t), \quad c(x, y, t) = c_{y,0}(y, t). \quad (3.1)$$

If we perturb this solution slightly we obtain:

$$u_x(x, y, t) = \delta u_{x,1}(y, t) e^{ikx}, \quad (3.2a)$$

$$u_y(x, y, t) = u_{y,0}(y, t) + \delta u_{y,1}(y, t) e^{ikx}, \quad (3.2b)$$

$$c(x, y, t) = c_0(y, t) + \delta c_1(y, t) e^{ikx}, \quad (3.2c)$$

where δ is a formal expansion parameter.

We introduce this ansatz into Eqs. (2.8) and obtain for the $O(\delta)$ terms of the stress:

$$\sigma_{xx,1} = \frac{2G(c_0)}{1 - 2\nu} [ik(1 - \nu)u_{x,1} + \nu u'_{y,1} - (1 + \nu)h'(c_0)c_1] - 2G'(c_0) \frac{1 + \nu}{1 - \nu} h(c_0)c_1, \quad (3.3a)$$

$$\sigma_{yy,1} = \frac{2G(c_0)}{1 - 2\nu} [(1 - \nu)u'_{y,1} + ik\nu u_{x,1} - (1 + \nu)h'(c_0)c_1], \quad (3.3b)$$

$$\sigma_{xy,1} = G(c_0) (ik u_{y,1} + u'_{x,1}), \quad (3.3c)$$

where the prime symbol denotes derivative either with respect to the argument (as in G or h) or derivative with respect to y , in c_1 , $u_{x,1}$ and $u_{y,1}$.

The stress balance equations (2.8c) read

$$ik\sigma_{xx,1} + G'(c_0)\partial_y c_0 (iku_{y,1} + u'_{x,1}) + G(c_0) (iku'_{y,1} + u''_{x,1}) = 0, \quad (3.4a)$$

$$ik\sigma_{xy,1} + \frac{2G'(c_0)}{1-2\nu}\partial_y c_0 [(1-\nu)u'_{y,1} + ik\nu u_{x,1} - (1+\nu)h'(c_0)c_1] + \frac{2G(c_0)}{1-2\nu} [(1-\nu)u''_{y,1} + ik\nu u'_{x,1} - (1+\nu)\partial_y c_0 h''(c_0)c_1 - (1+\nu)h'(c_0)c'_1] = 0. \quad (3.4b)$$

And the concentration balance equation (2.8a) has the following form

$$\partial_t c_1 = D(\mu_1 + \varepsilon\beta\partial_t c_1) \quad (3.5a)$$

$$\mu_1 = -\varepsilon D c_1 + \frac{1}{\varepsilon} f''(c_0) c_1 + 2\xi \frac{1+\nu}{1-\nu} \left[(Gh^2)'' c_1 + \frac{1+\nu}{1-2\nu} Gh'^2 c_1 - Gh' \frac{1-\nu}{1-2\nu} (iku_{x,1} + u'_{y,1}) - ikG' h u_{x,1} \right] \quad (3.5b)$$

where $D := \partial_y^2 - k^2$.

The boundary conditions at $y = 0$ are

$$\partial_y c_1 = 0, \quad \partial_y \mu_1 = 0, \quad \mathbf{u}_1 = 0. \quad (3.6)$$

and at $y = 1$

$$\partial_y c_1 = 0, \quad \partial_y \mu_1 = 0, \quad \boldsymbol{\sigma}_1 \cdot \mathbf{n} = 0. \quad (3.7)$$

The last condition on stress can be replaced by the following conditions in terms of the displacements

$$u'_{y,1} = -ik \frac{\nu}{1-\nu} u_{x,1} + \frac{1+\nu}{1-\nu} h'(c_0) c_1, \quad (3.8a)$$

$$u'_{x,1} = -iku_{y,1}. \quad (3.8b)$$

Eqs. (3.4), (3.5) with boundary conditions (3.6), (3.7) and (3.8) can be turned into a real system of equations with the change $iu_x \rightarrow \tilde{u}_x$. We adopt this convention in the following.

In order to study the stability we adopt the "frozen time" approximation [36], also called sometimes adiabatic approximation [35]. In this approximation, the time dependence of the coefficients of the equation is not considered, and only the time dependence of the perturbation is taken into account to solve the equation. In our case, this means that the time dependence that enters in Eqs. (3.4) and (3.5) through c_0 is ignored.

The solution of Eqs. (3.4) and (3.5) can then be written as a generalized eigenvalue problem, where the eigenvalues correspond to the growth rate of the perturbation. This generalized eigenvalue problem can then be solved numerically.

4 Numerics

The equations (2.8) have been solved in one and two dimensions using a non-linear adaptive multi-grid algorithm for the spatial part [42] and a Crank-Nicolson time stepping scheme. This algorithm is implemented in the solver BSAM.

In order to solve the linearized system for the perturbations given by Eqs. (3.4) and (3.5) the equations are discretized using a pseudospectral method, Chebyshev collocation. The resulting system can be casted as a generalized eigenvalue problem, with the eigenvalues being the growth rate of the perturbations. The system is then solved by Arnoldi's method using ARPACK routines as implemented in Matlab. The output of the BSAM solver is fed into the pseudospectral method by means of a resampling and interpolation, and the resolution is increased to ensure convergence and avoid the problems inherent to the resampling. We use four levels of refinement on the adaptive multigrid, which corresponds to $\Delta x = 1.95 \times 10^{-3}$ at its smallest, and use a number of Chebyshev collocation points that is enough to resolve this.

Regarding the specific choice of the auxiliary interpolating functions, we choose $g(c) = c$, implying a linear decrease of Young's modulus with c and $h(c) = c$, which follows from Vegard's law for the eigenstrain. The non-dimensional parameters β and ξ are varied across several orders of magnitude to observe their effect, since they are not known experimentally for the model system proposed. The value of the flux parameter k is in principle adjustable experimentally, and we have picked it to be $k = 4.0$. Finally the interface width is selected to be $\varepsilon = 0.005$ except where indicated. See also [25] for a comprehensive exploration of the effect of the different parameters in this system.

5 Results

5.1 Two-dimensional simulations

We have studied the behaviour of a layer with a rectangular cross-section. This study can be performed in two dimensions through the plane-strain approximation. The layer has a ratio of height to width of $1/4$, is clamped on the substrate below it and has a no-flux on all sides except the upper one, on which the flux is applied (see Fig. 1).

The initial condition corresponds to a completely depleted undeformed layer, on which a constant flux is applied. For the system at hand, this corresponds to a galvanostatic lithiation of the electrode. The initially rectangular domain deforms then on the top side, since it is where most of the lithium is accumulated. This accumulation eventually leads to phase separation on the upper part of the layer, see Fig. 2.

Phase separation occurs in different ways depending on the values of the parameters. For a small value of the kinetic parameter $\beta = 0.05$, the instability begins with a small pearl of the lithiated phase formed near the corners of the layer, which spreads then towards the center of the upper side following a periodic pattern. The instability begins in a corner due to our particular geometric choice, since it is there where the stress is the smallest and hence phase separation is incentivated by its smaller energy cost.

For the higher value of $\beta = 0.5$, we see in Fig. 2 that this periodic behaviour is notoriously absent, and the onset of the instability is slightly delayed. This delay due to kinetic effects is to be expected on general grounds (see [43] and also [25] for the application to this system), and the reason for the instability to lose its periodicity is discussed below in connection with the stability analysis.

Increasing the value of ξ similarly delays the onset of the instability. Again, this is to be expected since increasing ξ lowers the position of the coherent spinodal. Higher values of ξ bring nevertheless a curious interplay of effects (see Fig. 3)

For a small value of the kinetic parameter $\beta = 0.005$ and $\xi = 0.1$ the instability develops but

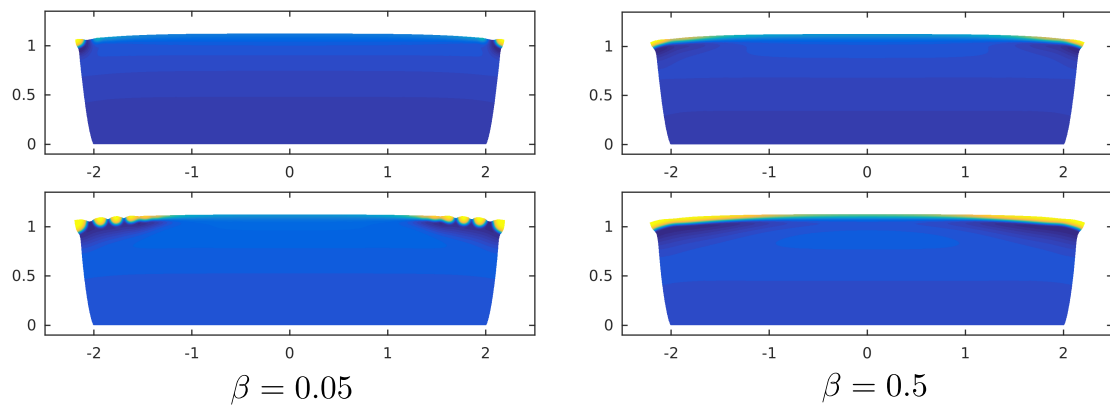


Figure 2: Onset of the instability for $\xi = 0.1$. For $\beta = 0.05$ the periodic structure near the corners is clearly visible, as it is its evolution from the corner spot (times, from top to bottom $t = 0.0378$, $t = 0.0380$). For $\beta = 0.5$ this periodicity is no longer present, and instead phase separation occurs smoothly, starting likewise from the corners (times, from top to bottom $t = 0.0388$, $t = 0.0390$)

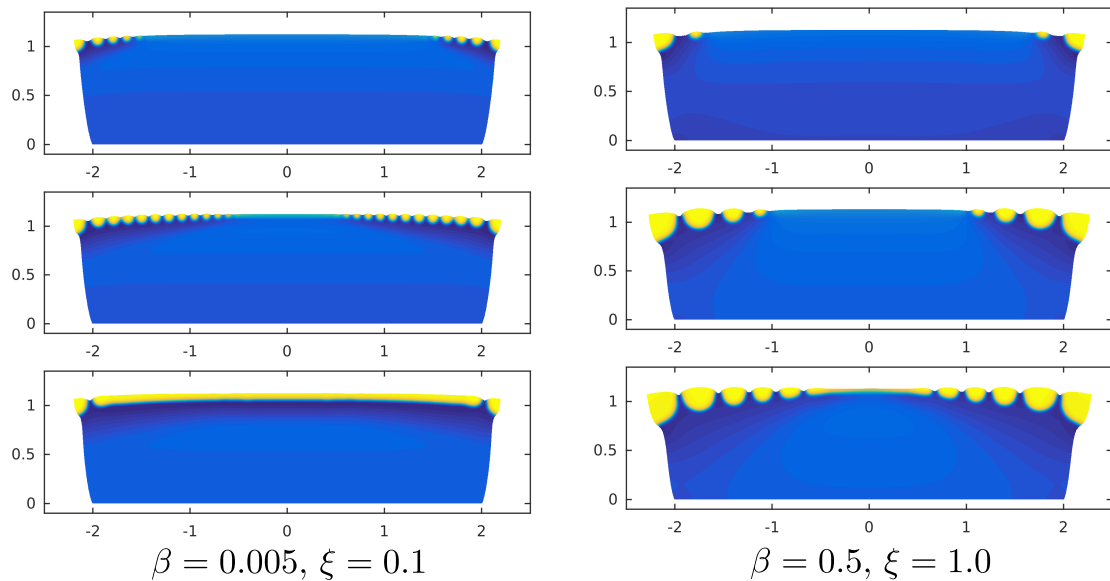


Figure 3: Effect of a higher value of ξ at the onset of the instability. The instability develops with a mostly well-defined periodicity for $\xi = 0.1$ and $\beta = 0.005$, but it is very short lived as the initial lithiated "pearls" coarsen almost immediately (times, from top to bottom $t = 0.0378$, $t = 0.0380$, $t = 0.0383$). For $\xi = 1.0$ and $\beta = 0.5$ the instability develops in a much slower fashion and gives rise to lithiated pearls of a greater size that persist in time (times, top to bottom $t = 0.0393$, $t = 0.0413$, $t = 0.0423$).

coarsens almost instantly. For larger values of ξ this is not the case. Even in the $\beta = 0.5$ case that did not show any signs of instability we observe for $\xi = 1.0$ a periodic instability with a smaller spatial frequency. A large value of ξ delays phase transition and hence, when it occurs, a large volume of lithiated silicon is generated near the corners. At the interface larger values of the stress are present, and hence the associated elastic energy discourages the phase transition near the interface, and hence the wavelength of the instability must be larger. At the same time, the size of the initial grain is much larger for the $\xi = 1.0$ case than for the $\xi = 0.1$ case, thus we anticipate the importance of the nonlinear effects to explain this effect.

5.2 Linear stability analysis of the Localized modes

In this section we study the stability of the laterally unbounded system. The solution of the one-dimensional problem is introduced into the system formed by Eqs. (3.4) and (3.5), and we solve the associated eigenvalue problem as a function of time.

The dispersion relation is obtained by computing the largest eigenvalue as a function of the wavenumber k . The results show that the dispersion relation is zero at $k = 0$ in the vicinity of the onset and, as opposed to spinodal decomposition, the instability starts at a finite value of k . While this behaviour is not evident for $\xi = 0.1$ (see Fig. 4a), it can clearly be observed for $\xi = 1.0$ (Fig. 4c), thus showing that this is an effect that clearly stems from the coupling with elasticity. The value of k at which the growth rate is at a maximum (k_{max}) increases steadily as the system becomes more unstable (see Fig. 4), in a behaviour similar to that found for the dispersion relation associated with spinodal decomposition (see e.g. Ref. [10]).

In addition to the dispersion relation we have also computed the most unstable eigenvectors for $\xi = 0.1$ and $\xi = 1.0$ at the onset (see Fig. 4). Results show a very strong confinement near the surface, with a width of the layer mostly independent of ξ . We see nevertheless that the second most-unstable eigenvector, which is not localized, is different for $\xi = 0.1$ (Fig. 4b) and $\xi = 1.0$ (Fig. 4d), where it strongly undershoots.

The previous localized instability can be compared with that from Tang et al. [22]. For a constant concentration basis state, we obtain a good agreement with their results for a large enough size of the system, despite the differences in the treatment of elasticity. Nevertheless, note that the similarity between the leading eigenvector in Figs. 4b and 4d shows that the confinement of the eigenvectors is an effect mostly related with the imposed flux, whereas the confinement in Ref. [22] is a consequence of elasticity. For a small enough value of the flux F we would recover an almost-flat concentration profile and then the scenario discussed in Ref. [22] would be the relevant one.

In Fig. 5 the evolution of the instability is visualized by computing the maximum value of the growth rate (λ_{max}) as a function of time. The instability develops very quickly, reaching large values of k_{max} and λ_{max} , only to decay even at a faster pace. After decaying, the instability settles for a short time into a long-wave mode with a very small growth rate, which is unlikely to be observed.

The comparison of the results on Figs. 4 and 5 for $\beta = 0.005$, $\xi = 0.1$ with those shown on Fig. 3 show that the peak of the instability corresponds indeed to the instability found in the two-dimensional simulations. The instability peaks at $t \approx 0.038$ with a value of $k_{max} \approx 55$, which results in a wavelength of about 0.11 units of length, which close to the one observed near the central areas in Fig. 3.

We have additionally computed the values of λ_{max} and k_{max} for different values of ξ and β . The results are summarized in Fig. 6.

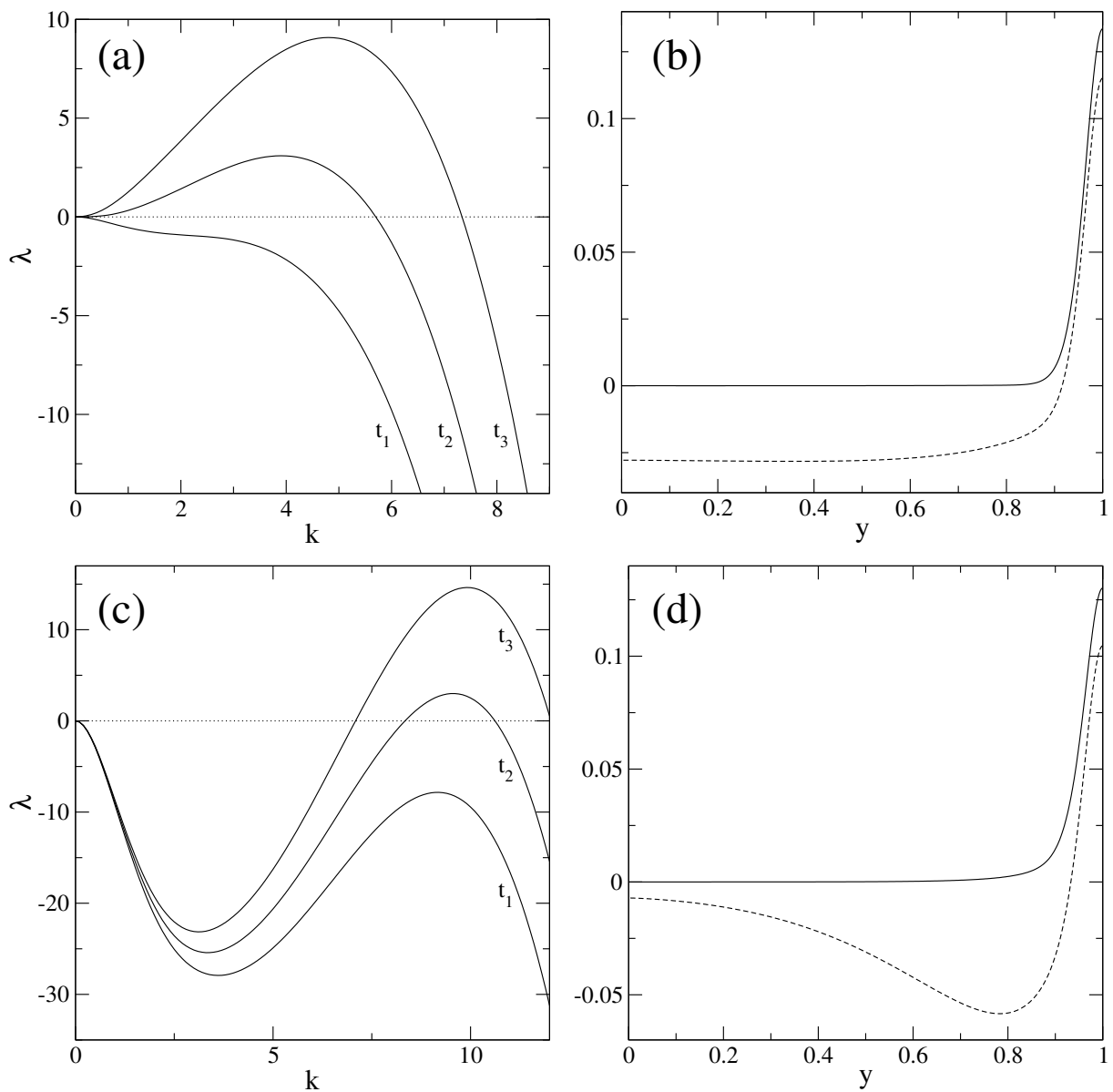


Figure 4: Instability for $\beta = 0.005$ and $\xi = 0.1$ (a-b) and $\xi = 1.0$ (c-d). (a) Growth rate as a function of wavenumber for the times $t_1 = 0.0367$, $t_2 = 0.0367125$, and $t_3 = 0.036725$. (b) Most unstable eigenvectors at the onset, $t = 0.0367125$ and $k = 3.9$. The solid and the dashed lines correspond respectively to the most unstable and the second most unstable eigenvectors. (c) Growth rate as a function of wavenumber for the times $t_1 = 0.0391$, $t_2 = 0.0391125$, and $t_3 = 0.039125$. (d) Most unstable eigenvectors at the onset, $t = 0.0391125$ and $k = 9.55$. The solid and the dashed lines correspond again to the most unstable and the second most unstable eigenvectors.

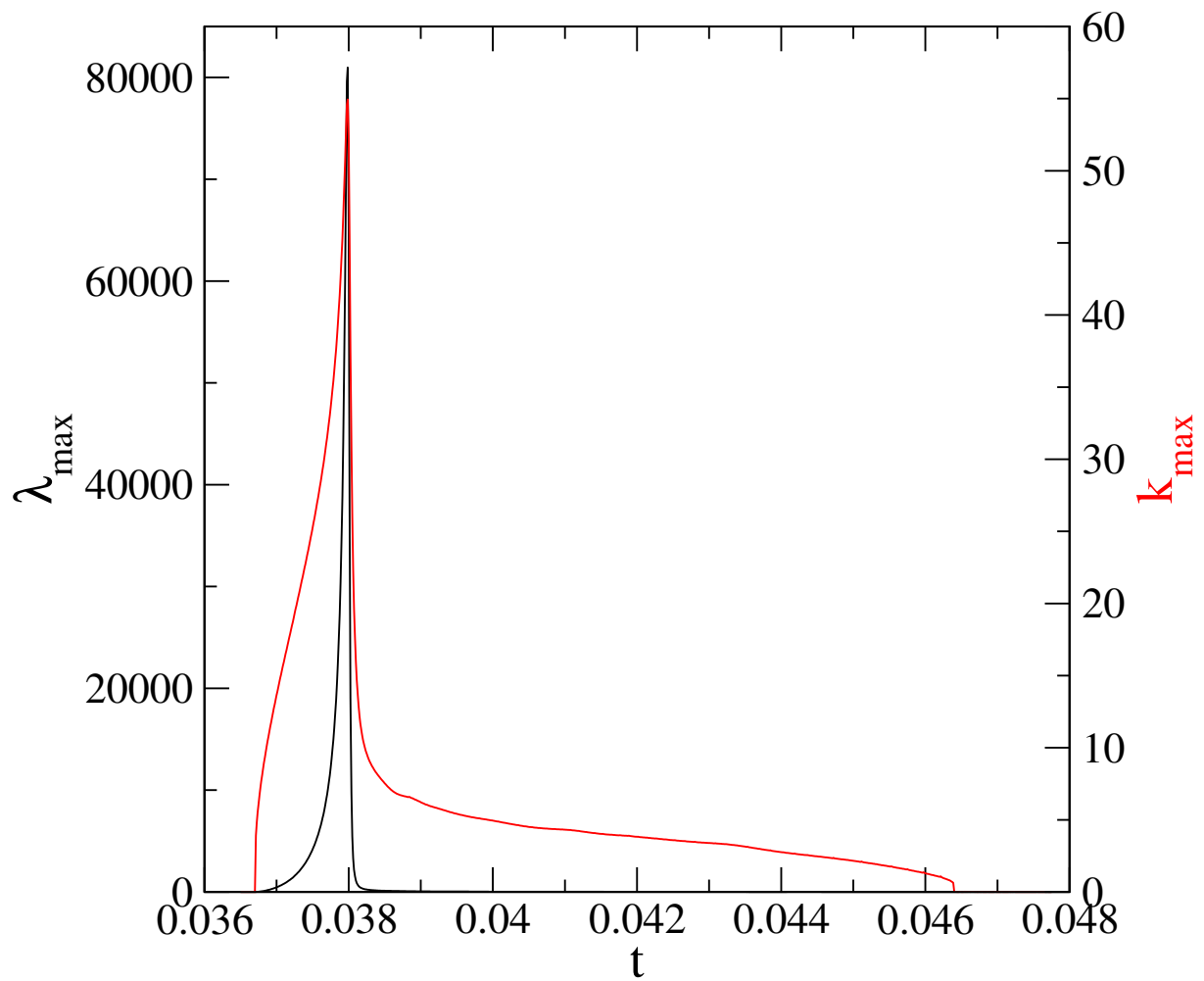


Figure 5: Development of the instability for $\beta = 0.005$ and $\xi = 0.1$. Evolution of λ_{\max} and k_{\max} with time.

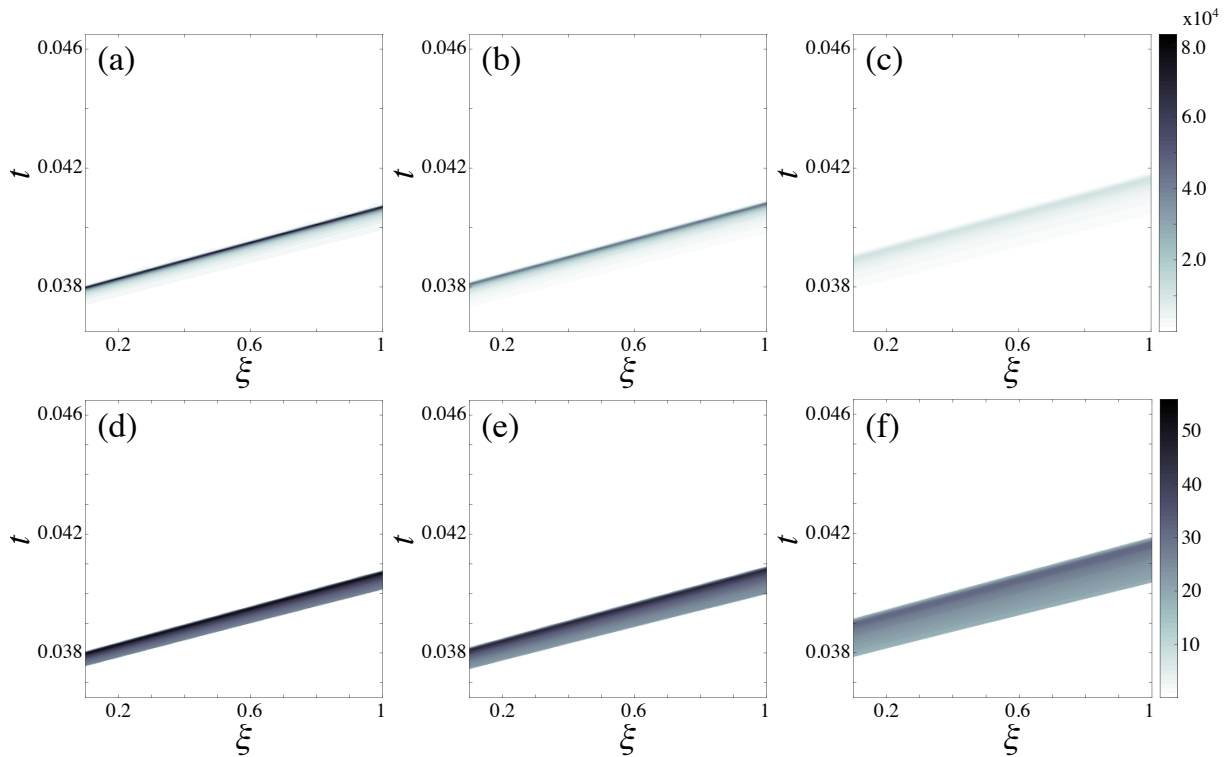


Figure 6: Dependence of λ_{max} (a-c) and k_{max} (d-f) on ξ and β , for $\beta = 0.005$ (a,d), $\beta = 0.05$ (b,e), and $\beta = 0.5$ (c,f).

The first thing to be noticed is that λ_{max} is significantly different from zero only in a narrow band, the smaller the value of β the narrower the band, see Figs. 6(a-c). This can also be seen in Fig. 5, where λ_{max} is different from zero only in a narrow peak. Additionally, this band has a clear slope. This slope is of course related with coherency, higher values of ξ imply a higher importance of the elastic energy, which is more important near the interface. These coherency strains delay phase separation, since the concentration needs to increase in order for the chemical energy to overcome the strain energy. Larger values of the flux parameter F would bring phase separation to earlier times and also change this slope, since the necessary buildup of concentration would take less time. Note also that the peak value of λ_{max} increases with ξ , albeit slightly. Similarly, the width of the time interval where λ_{max} is significantly larger than zero increases with ξ , which can be more clearly appreciated in the plots of k_{max} , Figs. 6(d-f).

The effect of β is also clearly shown on Fig. 6. Increasing β decreases the peak value of λ_{max} for all values of ξ , and at the same time widens the peak of the instability. Nevertheless, one effect does not compensate for the other, since the integral of λ_{max} in the instability region is much smaller for the $\beta = 0.5$ case than for the other two. The integral corresponds to an upper bound for the logarithm of the amplification of any perturbation, and hence we can conclude that the $\beta = 0.5$ case is more stable in any case in the linear regime.

The increase of β also delays the instability, as it had been anticipated before. The positions of the peak in the $\xi = 0.1$ case are $t_{peak} = 0.0380$, $t_{peak} = 0.0381$, and $t_{peak} = 0.0390$, for the cases with $\beta = 0.005$, $\beta = 0.05$, and $\beta = 0.5$, respectively.

The most unstable mode k_{max} follows a similar dependence with time as λ_{max} , as expected from Fig. 5. It shows a weak dependence on ξ along the peak, similarly to λ_{max} , and it raises much faster from the onset than λ_{max} , which explains the thicker band represented in Fig. 6.

5.3 Instability of the receding front

In this section we consider a fully phase separated layer, on which a negative flux ($F < 0$) drives the interface between the lithiated and nonlithiated phases towards the absorption boundary. This receding interface in the case without elasticity is known to be unstable, in accordance with the well-known correspondence with the Hele-Shaw problem in the sharp-interface limit [44].

In our case, the stability in the system corresponding to the sharp-interface limit has also been studied for the $\beta = 0$ case [3, 4]. In a previous article [34] the authors have derived the sharp interface limit for the complete model, the main results are described in Appendix A. We obtain the following dispersion relation for perturbations of the sharp interface:

$$\lambda = -k \frac{F + 2Ik^2 + Zk}{1 + 2I\beta k}, \quad (5.1)$$

see Appendix A for the definitions of Z and I and the details of the derivation, which is novel for the $\beta > 0$ case. Inspection of Eq. (5.1) reveals that the $F < 0$ case will in general be unstable.

We can compare the dispersion relation obtained with exactly the same procedure outlined in the previous sections with Eq. (5.1). This comparison, which should be accurate for a large enough system, fulfils a double purpose. On the one hand, it allows us to validate our results, since the two dispersion relations are derived in two exceedingly different ways. On the other hand, it allows us to test the convergence of the system with the value of ε .

In order to generate a receding interface we let evolve the system starting with completely depleted layer, and reverse the sign of F at $t = 0.2$, when the front is approximately in the middle of the layer. Then the dispersion relation and the eigenvalues are computed at $t = 0.225$, at which point the transient corresponding to the sign reversal has decayed sufficiently. The layer is thicker than in the previous case, with a thickness of 2, to facilitate the comparison with the unbounded case. The reversal of F can be accomplished for the system at hand by stopping the driving current and connecting the electrode to a load.

The comparison (Fig. 7) shows that the two methods give indeed very similar results, with a clear improvement as ε is decreased. This good agreement is surprising, given that Eq. (5.1) is derived for an unbounded system in the steady state, whereas the phase-field simulations are for a bounded system (albeit with a size that is the double of the previous section) that is in a transient state. This makes this good agreement even more remarkable. Nevertheless, the results show that the results are not so good for smaller k , what we assume is an effect of the boundary conditions, and similarly ε dependence is larger for large k , which again is to be expected since these modes correspond to smaller wavelengths.

The eigenvectors corresponding to the most unstable eigenvalues at $t = 0.225$ have also been computed for $k_{max} = 1.94$, (Fig. 8). Results show that the eigenvector from the most unstable eigenvalue is zero almost everywhere, except in the vicinity of the interface. On the one hand, this is to be expected, since the instability, which is akin to the Mullins-Sekerka instability, is localized at the interface. On the other hand, this result is surprising, since we are treating the instabilities as a bulk phenomenon and we have obtained this localization in a natural way. In Fig. 8 the eigenvector corresponding to the second largest eigenvalue, which is negative, is also on display. This eigenvector is not completely localized, but rather extends into the depleted part of the layer. This scenario is again very similar to the one shown in Fig 4, where only the eigenvector of the positive eigenvalue is localized.

Finally, note that this long wave instability would develop very slowly when compared with the instability

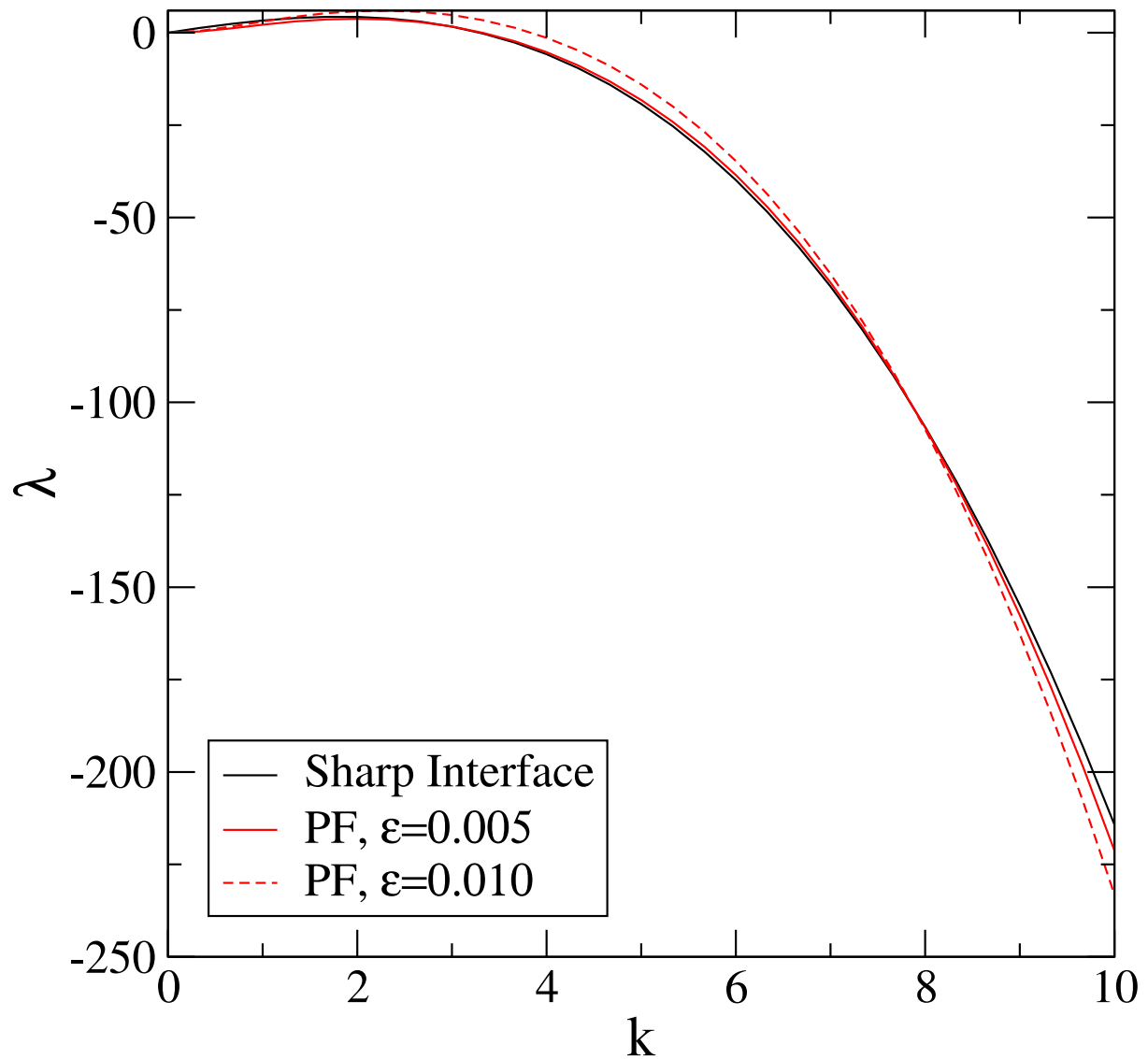


Figure 7: Comparison of the phase field (PF) instability (largest eigenvalue) for the receding interface at $t = 0.225$, with the sharp interface growth rate, Eq. (A.29). Parameters are $F = -4$, $\beta = 0.05$ and $\xi = 0.1$.

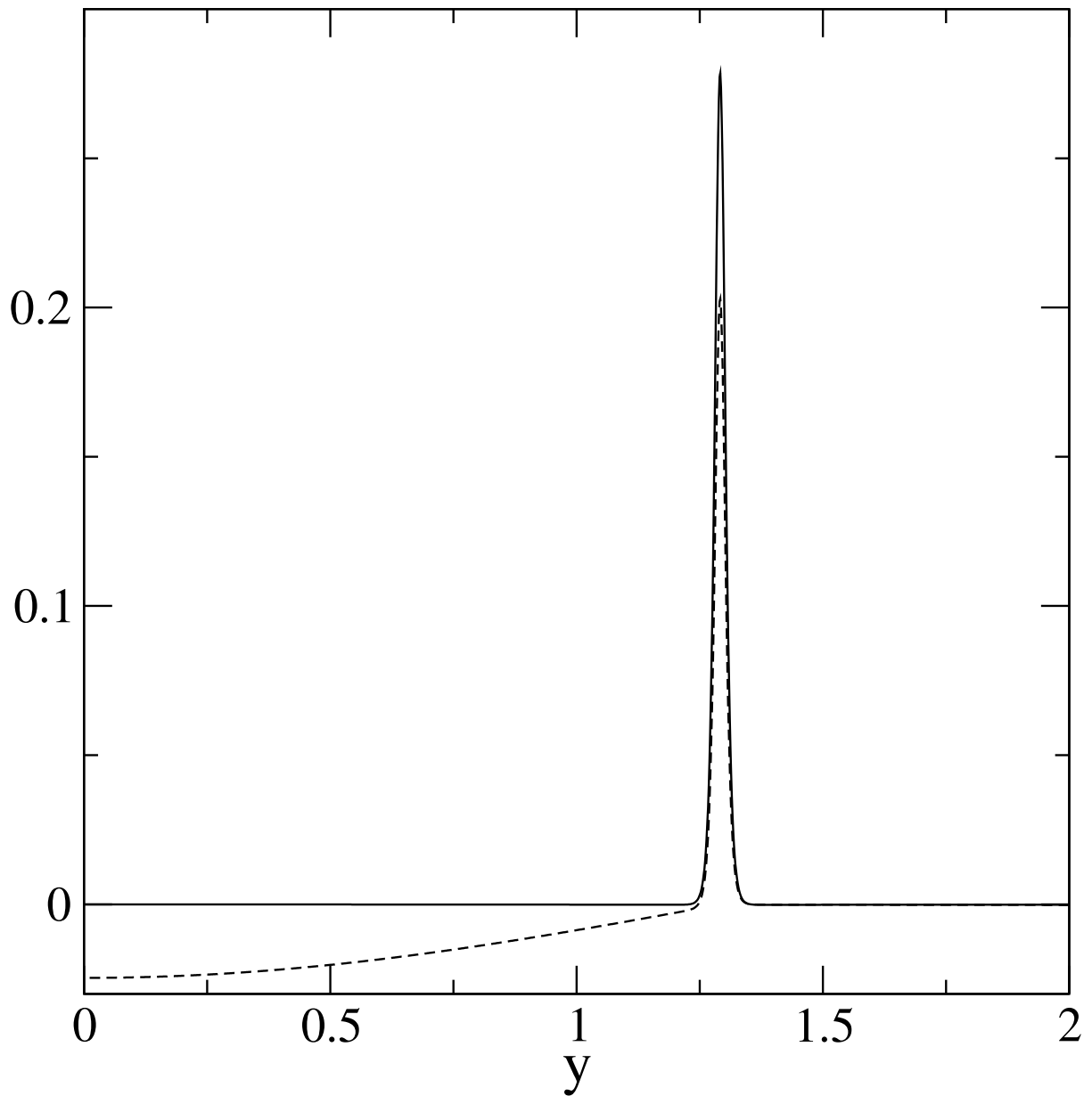


Figure 8: Instability for $\beta = 0.05$ and $\xi = 0.1$. Most unstable eigenvectors at $t = 0.225$ and $k = 1.94$. The solid and the dashed lines correspond respectively to the most unstable and the second most unstable eigenvectors.

related with phase separation described in the previous section. The inverse of $\lambda_{max} = 3.12$ can be used as a proxy for the time for the development of the instability, which gives a time $t = 0.32$, which is larger than all the times that have been considered in this work.

6 Conclusion

In the present article we have used an unified approach to the study of the different instabilities that are present in the system of study. Through our study we have described a transient localized instability related with spinodal decomposition and found an unexpected connection with a Mullins-Sekerka-like instability that occurs in the phase separated case when the interface recedes. The present unified approach allows thus for the systematic and simultaneous study of instabilities that are typically not connected, allowing the mutual validation of the different techniques used to study them.

This article also incorporates the study of the role of kinetics on the transient instability, as well as on the receding front instability. While there are previous works that have derived equations similar to Eq. (5.1), such as [3] and [4] this is to our knowledge the only derivation that incorporates the role of kinetics, thus we give a detailed account of the derivation in the appendix.

We have found the conditions under which the patterns formed in Figs. 2 and 3 develop, and have characterized the instability as a transient one. Nevertheless, our approach based in the linear regime has limitations, as exemplified by the case $\beta = 0.5, \xi = 1.0$, that according to our analysis should be less unstable, but give in fact a pattern that lasts longer in time, as shown in Fig. 3.

Since this localized instability is transient, the linearised problem has coefficients that are time dependent and non-uniform in space and hence the variables cannot be separated. A common approach [35, 45–52] used also in this paper is to “freeze” time (only) in the coefficients and then proceed with a traditional separation of variables ansatz. This yields exponential evolution in time at a rate that is determined by the solution of a spatial eigenvalue problem. The question is to determine when this method is accurate. Moreover, the obtained rate depends on the time at which the coefficients are frozen and hence may lead to different results at different times. In particular, a system may change from stable to unstable or vice-versa as the coefficients are taken for progressively later times, and as is the case here, may be unstable only for a limited period of time.

To incorporate the effect of the slowly changing coefficients, a multiple scales ansatz can be used, see for example [53, 54] and references in particular in [53]. This analysis reveals two key conclusions: First, that the log of the amplification of each mode is given by the integral of the eigenvalue in time; and secondly, that this approximation is the leading order contribution if the eigenvalue multiplied with the time scale over which the coefficients change is large. In Fig. 5, the peak of the eigenvalue times the time over which it changes is indeed large, so the condition is satisfied. Then, the amplification can be estimated by integrating the eigenvalue obtained from the frozen mode analysis, and then exponentiating the result. Since the top eigenvalue changes sign, we obtain a largest amplification after which the instability subsided. In [54] it was shown how the dominant mode can be obtained by finding, at each time, the wave number with the largest amplification. This is not the value k_{max} that is obtained in this paper, but the latter may be enough to indicate basic trends. A more detailed investigation that determines the different time scales analytically and their impact on the amplification of perturbations will be left to future work.

Finally, the scenario studied here in detail is relevant for applications where the flux F is high enough, in the limit of small F we obtain the scenario described in Ref. [22]. One can thus reach that scenario from the one described here through the continuous dependence on F . We note, that the fact that

the system is driven changes its behaviour dramatically, from the nature of the localization of the concentration to the finite k of the first instability, as opposed to a purely long-wavelength, spinodal-decomposition-like instability. The characterization of this transition from a concentration-dominated to an elastic-dominated instability is currently receiving our attention and can also be studied with the same model, but it is out of the scope of the present work.

References

- [1] William W Mullins and Robert F Sekerka. Morphological stability of a particle growing by diffusion or heat flow. *Journal of applied physics*, 34(2):323–329, 1963.
- [2] William W Mullins and RF Sekerka. Stability of a planar interface during solidification of a dilute binary alloy. *Journal of applied physics*, 35(2):444–451, 1964.
- [3] Perry Howard Leo and RF Sekerka. The effect of elastic fields on the morphological stability of a precipitate grown from solid solution. *Acta metallurgica*, 37(12):3139–3149, 1989.
- [4] Akira Onuki. Interface motion in two-phase solids with elastic misfits. *Journal of the Physical Society of Japan*, 60(2):345–348, 1991.
- [5] RJ Asaro and WA Tiller. Interface morphology development during stress corrosion cracking: Part i. via surface diffusion. *Metallurgical Transactions*, 3(7):1789–1796, 1972.
- [6] MA Grinfel'd. Instability of the separation boundary between a nonhydrostatically stressed elastic body and a melt. *Soviet Physics Doklady*, 31:831, 1986.
- [7] David J Srolovitz. On the stability of surfaces of stressed solids. *Acta metallurgica*, 37(2):621–625, 1989.
- [8] John W Cahn and John E Hilliard. Free energy of a nonuniform system. i. interfacial free energy. *The Journal of chemical physics*, 28(2):258–267, 1958.
- [9] John W Cahn. On spinodal decomposition. *Acta metallurgica*, 9(9):795–801, 1961.
- [10] J.D Gunton, M. San Miguel, and P.S. Sahni. The dynamics of first order phase transitions. In *Phase Transitions and Critical Phenomena*, volume 8, pages 269–466. Academic Press, 1983.
- [11] John W Cahn. On spinodal decomposition in cubic crystals. *Acta metallurgica*, 10(3):179–183, 1962.
- [12] Sanjay Puri. Surface-directed spinodal decomposition. *Journal of Physics: Condensed Matter*, 17(3):R101–R142, 2005.
- [13] Matthew G Hennessy, V. M Burlakov, Andreas Münch, B. Wagner, and A. Goriely. Propagating topological transformations in thin immiscible bilayer films. *Europhysics Letters*, 105(6):66001, 2013.
- [14] IP Ipatova, VG Malyskin, and VA Shchukin. On spinodal decomposition in elastically anisotropic epitaxial films of iii-v semiconductor alloys. *Journal of applied physics*, 74(12):7198–7210, 1993.
- [15] François Léonard and Rashmi C Desai. Elastic effects and phase segregation during the growth of thin alloy layers by molecular-beam epitaxy. *Physical Review B*, 56(8):4955, 1997.

- [16] François Léonard and Rashmi C Desai. Spinodal decomposition and dislocation lines in thin films and bulk materials. *Physical Review B*, 58(13):8277, 1998.
- [17] François Léonard and Rashmi Desai. Alloy decomposition and surface instabilities in thin films. *Physical Review B*, 57(8):4805, 1998.
- [18] DJ Seol, SY Hu, YL Li, J Shen, KH Oh, and LQ Chen. Computer simulation of spinodal decomposition in constrained films. *Acta materialia*, 51(17):5173–5185, 2003.
- [19] SM Wise, JS Kim, and WC Johnson. Surface-directed spinodal decomposition in a stressed, two-dimensional, thin film. *Thin Solid Films*, 473(1):151–163, 2005.
- [20] Y Zhen and PH Leo. Diffusional phase transformations in self-stressed solid films. *Thin solid films*, 513(1):223–234, 2006.
- [21] M Roussel, E Talbot, Christelle Pareige, R Pratibha Nalini, Fabrice Goubilleau, and Philippe Pareige. Confined phase separation in six nanometric thin layers. *Applied Physics Letters*, 103(20):203109, 2013.
- [22] Ming Tang and Alain Karma. Surface modes of coherent spinodal decomposition. *Physical review letters*, 108(26):265701, 2012.
- [23] Pierre-Antoine Geslin, Yechuan Xu, and Alain Karma. Morphological instability of grain boundaries in two-phase coherent solids. *Physical review letters*, 114(10):105501, 2015.
- [24] Ye-Chuan Xu, Pierre-Antoine Geslin, and Alain Karma. Elastically mediated interactions between grain boundaries and precipitates in two-phase coherent solids. *Physical Review B*, 94(14):144106, 2016.
- [25] Esteban Meca, Andreas Münch, and Barbara Wagner. Thin-film electrodes for high-capacity lithium-ion batteries: influence of phase transformations on stress. *Proceedings of the Royal Society A: Mathematical, Physical and Engineering Science*, 472(2193):20160093, sep 2016.
- [26] Daniel A Cogswell and Martin Z Bazant. Coherency strain and the kinetics of phase separation in LiFePO_4 nanoparticles. *ACS nano*, 6(3):2215–2225, 2012.
- [27] Martin Z Bazant. Theory of chemical kinetics and charge transfer based on nonequilibrium thermodynamics. *Accounts of chemical research*, 46(5):1144–1160, 2013.
- [28] Jiang Wei Wang, Yu He, Feifei Fan, Xiao Hua Liu, Shuman Xia, Yang Liu, C. Thomas Harris, Hong Li, Jian Yu Huang, Scott X. Mao, and et al. Two-phase electrochemical lithiation in amorphous silicon. *Nano Lett.*, 13(2):709–715, Feb 2013.
- [29] Vijay A Sethuraman, Michael J Chon, Maxwell Shimshak, Venkat Srinivasan, and Pradeep R Guduru. In situ measurements of stress evolution in silicon thin films during electrochemical lithiation and delithiation. *Journal of Power Sources*, 195(15):5062–5066, 2010.
- [30] A Novick-Cohen. On the viscous Cahn-Hilliard equation. Material instabilities in continuum mechanics, Edinburgh, 1985–1986, 329–342. *Oxford Sci. Publ., Oxford Univ. Press, New York*, 1988.
- [31] FC Larché and John W Cahn. The effect of self-stress on diffusion in solids. *Acta Metallurgica*, 30(10):1835–1845, 1982.

- [32] Akira Onuki. Ginzburg-landau approach to elastic effects in the phase separation of solids. *Journal of the Physical Society of Japan*, 58(9):3065–3068, 1989.
- [33] P. Fratzl, O. Penrose, and J. L. Lebowitz. Modeling of phase separation in alloys with coherent elastic misfit. *Journal of Statistical Physics*, 95(5-6):1429–1503, June 1999.
- [34] Esteban Meca, Andreas Münch, and Barbara Wagner. Sharp-interface formation during lithium intercalation into silicon. *European Journal of Applied Mathematics*, pages 1–28, 2017.
- [35] Esteban Meca and Laureano Ramirez-Piscina. Transient convective instabilities in directional solidification. *Physics of Fluids*, 22(11):114110, 2010.
- [36] Matthew G Hennessy and Andreas Münch. A multiple-scale analysis of evaporation induced marangoni convection. *SIAM Journal on Applied Mathematics*, 73(2):974–1001, 2013.
- [37] VB Shenoy, P Johari, and Y Qi. Elastic softening of amorphous and crystalline Li–Si phases with increasing Li concentration: a first-principles study. *Journal of Power Sources*, 195(19):6825–6830, 2010.
- [38] Morton E Gurtin. Generalized ginzburg-landau and cahn-hilliard equations based on a microforce balance. *Physica D: Nonlinear Phenomena*, 92(3):178–192, 1996.
- [39] Wolfgang Dreyer and Clemens Gohlke. Sharp limit of the viscous cahn–hilliard equation and thermodynamic consistency. *Continuum Mechanics and Thermodynamics*, pages 1–22, 2015.
- [40] Damian Burch and Martin Z. Bazant. Size-dependent spinodal and miscibility gaps for intercalation in nanoparticles. *Nano Letters*, 9(11):3795–3800, 2009. PMID: 19824617.
- [41] Yi Zeng and Martin Z Bazant. Phase separation dynamics in isotropic ion-intercalation particles. *SIAM Journal on Applied Mathematics*, 74(4):980–1004, 2014.
- [42] Steven Wise, Junseok Kim, and John Lowengrub. Solving the regularized, strongly anisotropic Cahn-Hilliard equation by an adaptive nonlinear multigrid method. *Journal of Computational Physics*, 226(1):414 – 446, 2007.
- [43] M Hillert and M Rettenmayr. Deviation from local equilibrium at migrating phase interfaces. *Acta materialia*, 51(10):2803–2809, 2003.
- [44] Robert L Pego. Front migration in the nonlinear Cahn-Hilliard equation. *Proceedings of the Royal Society of London A: Mathematical, Physical and Engineering Sciences*, 422(1863):261–278, 1989.
- [45] W. Lick. The instability of a fluid layer with time-dependent heating. *Journal of Fluid Mechanics*, 21(03):565–576, 1965.
- [46] I. G. Currie. The effect of heating rate on the stability of stationary fluids. *Journal of Fluid Mechanics*, 29(02):337–347, 1967.
- [47] B.D. Edmonstone, O.K. Matar, and R.V. Craster. Surfactant-induced fingering phenomena in thin film flow down an inclined plane. *Physica D: Nonlinear Phenomena*, 209(120134):62–79, 2005.
- [48] M. R. E. Warner, R. V. Craster, and O. K. Matar. Unstable van der Waals driven line rupture in Marangoni driven thin viscous films. *Physics of Fluids*, 14(5):1642, 2002.

- [49] Theodore D. Foster. Stability of a homogeneous fluid cooled uniformly from above. *Physics of Fluids*, 8(7):1249, 1965.
- [50] Andreas Münch and Barbara Wagner. Impact of slippage on the morphology and stability of a dewetting rim. *Journal of Physics: Condensed Matter*, 23(18):184101, 2011.
- [51] F Doumenc, B Guerrier, and C Allain. Coupling between mass diffusion and film temperature evolution in gravimetric experiments. *Polymer*, 46(11):3708–3719, 2005.
- [52] O. Touazi, E. Chénier, F. Doumenc, and B. Guerrier. Simulation of transient Rayleigh-Bénard-Marangoni convection induced by evaporation. *International Journal of Heat and Mass Transfer*, 53(4):656–664, 2010.
- [53] M. G. Hennessy and A. Münch. A multiple-scale analysis of evaporation induced marangoni convection. *SIAM Journal on Applied Mathematics*, 73(2):974–1001, 2013.
- [54] M. Dziwnik, M. Korzec, A. Münch, and B. Wagner. Stability analysis of unsteady, nonuniform base states in thin film equations. *Multiscale Modeling & Simulation*, 12(2):755–780, 2014.

A Instability of the Sharp Interface Model

In this appendix we detail the instability of the sharp interface limit of Eqs. (2.8) as computed by Meca et al. [34]. The equations for the chemical potential and the stress read as follows:

$$\nabla^2 \mu_0 = 0, \quad (\text{A.1a})$$

$$\nabla \cdot \boldsymbol{\sigma}_0 = 0, \quad (\text{A.1b})$$

together with the constitutive relation for stress:

$$\sigma_{ij,0} = 2G^\pm (\epsilon_{ij,0} - \epsilon_{ij}^{0,\pm}) + \frac{2\nu}{1-2\nu} G^\pm (\epsilon_{kk,0} - \epsilon_{kk}^{0,\pm}) \delta_{ij}, \quad (\text{A.1c})$$

where $G^\pm = G(c_0^\pm)$ and $\epsilon_{ij}^{0,\pm} = h(c_0^\pm)$ are constants. The \pm superindex represents the values at the interface for both regions, the lithiated (Ω^+) and the amorphous silicon phase (Ω^-). These values have to be understood as liimits. The specific values of G^\pm and $h(c_0^\pm)$ are

$$G^\pm = \begin{cases} 1 & \mathbf{r} \in \Omega^- \\ \frac{E_{\text{Li}_x\text{Si}}}{E_{\text{Si}}} & \mathbf{r} \in \Omega^+ \end{cases}, \quad \epsilon_{ij}^{0,\pm} = \begin{cases} h(c^-) \delta_{ij} = 0 & \mathbf{r} \in \Omega^- \\ h(c^+) \delta_{ij} = \delta_{ij} & \mathbf{r} \in \Omega^+ \end{cases}. \quad (\text{A.1d})$$

Relation (A.1c) can be inverted to yied

$$\epsilon_{ij,0} = \epsilon_{ij}^{0,\pm} + \frac{1}{2G^\pm} \sigma_{ij,0} - \frac{1}{2G^\pm} \frac{\nu}{1+\nu} \delta_{ij} \sigma_{kk} \quad (\text{A.1e})$$

for the strain tensor. This relation is explicitly used below.

Similarly, from the plane strain approximation the value of $\sigma_{zz,0}$ can be computed as follows:

$$\sigma_{zz,0} = -2(1+\nu)G^\pm \epsilon_{zz}^{0,\pm} + \nu (\sigma_{xx,0} + \sigma_{yy,0}). \quad (\text{A.1f})$$

The boundary conditions at the free boundary for the elasticity equation correspond to continuity for the elastic field and for the tractions across the interface:

$$\mathbf{u}_0^+ = \mathbf{u}_0^-, \quad (\text{A.1g})$$

$$\mathbf{n} \cdot \boldsymbol{\sigma}_0^+ = \mathbf{n} \cdot \boldsymbol{\sigma}_0^-. \quad (\text{A.1h})$$

For the chemical potential equation we have at the interface away from the absorption boundary:

$$\begin{aligned} \mu_0^\pm (c_0^+ - c_0^-) = & -(\beta v_n + \mathcal{K}) I + \frac{\xi}{2} [\sigma_{ij,0}^+ (\epsilon_{ij,0}^+ - \delta_{ij} h(c_0^+)) - \sigma_{ij,0}^- (\epsilon_{ij,0}^- - \delta_{ij} h(c_0^-))] \\ & - \xi \sigma_{ij,0}^+ (\epsilon_{ij,0}^+ - \epsilon_{ij,0}^-), \end{aligned} \quad (\text{A.1i})$$

$$(c_0^+ - c_0^-) v_n = -(\partial_r \mu_0^+ - \partial_r \mu_0^-), \quad (\text{A.1j})$$

where $I = \int_0^1 \sqrt{2f(\phi)} d\phi$. The conditions at the substrate are

$$\partial_y \mu_0|_{y=0} = 0, \quad (\text{A.1k})$$

$$\mathbf{u}|_{y=0} = 0, \quad (\text{A.1l})$$

and at the absorption boundary we have:

$$\partial_y \mu_0|_{y=1} = F, \quad (\text{A.1m})$$

$$\sigma_{iy,0}|_{y=1} = 0, \quad i = x, y. \quad (\text{A.1n})$$

At the triple junctions the angle is $\alpha = \pi/2$.

This systems admits a one-dimensional travelling-wave solution, with the interface located at $y_I = -Ft$. All of the components of the strain tensor are zero except for $\epsilon_{yy,0}$, which reads

$$\epsilon_{yy,0} = \begin{cases} 0 & y < y_I \\ \frac{1+\nu}{1-\nu} & y > y_I \end{cases}, \quad (\text{A.2})$$

which implies that $u_{x,0} = u_{z,0} = 0$ and therefore

$$u_{y,0} = \begin{cases} 0 & y < y_I \\ \frac{1+\nu}{1-\nu}(y + Ft) & y > y_I \end{cases}. \quad (\text{A.3})$$

Similarly, the value of all components of stress is zero except for $\sigma_{xx,0}$ and $\sigma_{zz,0}$, they are both equal to

$$\sigma_{xx,0} = \begin{cases} 0 & y < y_I \\ -2 \frac{E_{\text{Li}_x\text{Si}}}{E_{\text{Si}}} \frac{1+\nu}{1-\nu} & y > y_I \end{cases}. \quad (\text{A.4})$$

Finally, we have for the chemical potential

$$\mu_{y,0} = \begin{cases} IF\beta + \xi \frac{E_{\text{Li}_x\text{Si}}}{E_{\text{Si}}} \frac{1+\nu}{1-\nu} & y < y_I \\ F(y + Ft) + IF\beta + \xi \frac{E_{\text{Li}_x\text{Si}}}{E_{\text{Si}}} \frac{1+\nu}{1-\nu} & y > y_I \end{cases}, \quad (\text{A.5})$$

which is obviously continuous. Notice that in all the previous cases a temporal translation is enough to give the appropriate initial conditions, and that this travelling wave fulfils all of the boundary conditions at the interface and on the outer boundaries.

A.1 Stability of the one-dimensional solution

The previously described solution can be perturbed in order to assess its stability. We will use an Airy stress function in order to treat in a unified way the displacement vector and the strain and stress tensors.

$$\sigma_{xx} = \partial_y^2 \phi, \quad \sigma_{yy} = \partial_x^2 \phi, \quad \sigma_{xy} = -\partial_{xy}^2 \phi. \quad (\text{A.6})$$

It can be proved that ϕ satisfies the biharmonic equation

$$\nabla^2 \nabla^2 \phi = 0, \quad (\text{A.7})$$

as long as the elastic constants do not vary and there is a constant or linearly varying eigenstrain. Fields ϕ and μ are perturbed as follows:

$$\phi = \phi_0 + \varepsilon \phi_1, \quad (\text{A.8a})$$

$$\mu = \mu_0 + \varepsilon \mu_1, \quad (\text{A.8b})$$

where ε is a formal expansion parameter. We take ϕ_1 and μ_1 as periodic in the x direction, and assume an exponential dependence on time:

$$\phi_1 = e^{\lambda t} e^{ikx} \Phi(y), \quad (\text{A.9a})$$

$$\mu_1 = e^{\lambda t} e^{ikx} M(y). \quad (\text{A.9b})$$

Substituting (A.8) and (A.9) into Eqs. (A.1a) and (A.7) linear ODEs are obtained that give the following general solution:

$$\Phi(y) = (A_1^\pm + A_3^\pm y) e^{-ky} + (A_2^\pm + A_4^\pm y) e^{ky}, \quad (\text{A.10a})$$

$$M(y) = B_1^\pm e^{-ky} + B_2^\pm e^{ky}, \quad (\text{A.10b})$$

where A_i^\pm and B_i^\pm are constants, and the \pm superindices denote both sides of the interface. The position of the interface is similarly perturbed:

$$\Upsilon(x) = y_I(t) + \varepsilon \Upsilon_1 e^{\lambda t} e^{ikx}, \quad (\text{A.11})$$

where Υ_1 is a constant. From the previous equation we obtain the form of the normal vector:

$$\mathbf{n} = \frac{1}{\sqrt{(\partial_x \Upsilon)^2 + 1}} \begin{pmatrix} -\partial_x \Upsilon \\ 1 \end{pmatrix} = \begin{pmatrix} 0 \\ 1 \end{pmatrix} + \varepsilon \begin{pmatrix} ik \Upsilon_1 e^{\lambda t} e^{ikx} \\ 0 \end{pmatrix} + O(\varepsilon^2). \quad (\text{A.12})$$

The perturbations (A.9) and (A.11) contain a total of 13 constants. They can be found from the boundary conditions (A.1g), (A.1h), (A.1i), (A.1j), (A.1k), (A.1l), (A.1m), and (A.1n), which also sum 13 conditions.

The introduction of the perturbations in the equations will lead to a homogeneous system of 13 equations. They would give rise to a homogeneous system, and requiring that there exists a solution other than the trivial results in a dispersion relation that gives the growth rate σ as a function of the wavenumber k .

A.1.1 Solution of the Unbounded Case

In this case we can use a travelling wave ansatz for the perturbation, by changing $y \rightarrow \tilde{y} + y_I$, such that $y = y_I$ implies $\tilde{y} = 0$ (we drop the tilde signs from now on). The equations are invariant under this transformation, and the equations are considerably simplified. The solutions are the same, but imposing that the perturbations are finite at infinity gives directly:

$$A_1^- = A_3^- = A_2^+ = A_4^+ = B_1^- = B_2^+ = 0, \quad (\text{A.13})$$

which simplifies the equations considerably. From the conservation condition (A.1j) we obtain

$$-F + \varepsilon \lambda \Upsilon_1 e^{\lambda t} e^{ikx} = -F - \varepsilon k (-B_1^+ - B_2^-) e^{\lambda t} e^{ikx}, \quad (\text{A.14})$$

and hence

$$\lambda \Upsilon_1 = k (B_1^+ + B_2^-). \quad (\text{A.15})$$

In order to write the form of the local equilibrium condition (A.1i), we need the explicit form of the stress and strain tensors. For $\mathbf{r} \in \Omega_+$ we have that

$$\sigma_{xx} = -2 \frac{E_{\text{Li}_x\text{Si}}}{E_{\text{Si}}} \frac{1 + \nu}{1 - \nu} + \varepsilon [k^2 A_1^+ + (k^2 y - 2k) A_3^+] e^{\lambda t} e^{ikx} e^{-ky} \quad (\text{A.16a})$$

$$\sigma_{yy} = -\varepsilon k^2 (A_1^+ + A_3^+ y) e^{\lambda t} e^{ikx} e^{-ky} \quad (\text{A.16b})$$

$$\sigma_{xy} = -\varepsilon ik (A_3^+ - kA_1^+ - kA_3^+ y) e^{\lambda t} e^{ikx} e^{-ky} \quad (\text{A.16c})$$

The value of σ_{zz} can be computed from the previous equations by using Eq. (A.1f), which results in

$$\sigma_{zz} = -2 \frac{1 + \nu}{1 - \nu} \frac{E_{\text{Li}_x\text{Si}}}{E_{\text{Si}}} - 2\nu k \varepsilon A_3^+ e^{\lambda t} e^{ikx} e^{-ky}. \quad (\text{A.17})$$

Therefore,

$$\sigma_{kk} = -4 \frac{1 + \nu}{1 - \nu} \frac{E_{\text{Li}_x\text{Si}}}{E_{\text{Si}}} - 2(1 + \nu) k \varepsilon A_3^+ e^{\lambda t} e^{ikx} e^{-ky}. \quad (\text{A.18})$$

By using the previous result and Eq. (A.1e), the non-zero components of the strain tensor can be computed

$$\epsilon_{xx} = \frac{1}{2G^+} \varepsilon [k^2 A_1^+ + (k^2 y - 2(1 - \nu)k) A_3^+] e^{\lambda t} e^{ikx} e^{-ky} \quad (\text{A.19a})$$

$$\epsilon_{yy} = \frac{1 + \nu}{1 - \nu} - \frac{1}{2G^+} \varepsilon [k^2 A_1^+ + (k^2 y - 2\nu k) A_3^+] e^{\lambda t} e^{ikx} e^{-ky}, \quad (\text{A.19b})$$

$$\epsilon_{xy} = -\frac{1}{2G^+} \varepsilon ik (A_3^+ - kA_1^+ - kA_3^+ y) e^{\lambda t} e^{ikx} e^{-ky}. \quad (\text{A.19c})$$

The displacement functions can be obtained by integration (by using the definition of the shear stress as a compatibility condition),

$$u_x = \int \epsilon_{xx} dx + Ay + x_0, \quad (\text{A.20a})$$

$$u_y = \int \epsilon_{yy} dy - Ax + y_0, \quad (\text{A.20b})$$

i.e. the displacements associated with strain plus an infinitesimal rotation of angle A and a translation (x_0, y_0) , two strainless transformations. Since both of these additions imply a displacement at infinity we can safely ignore them. The final result is then

$$u_x = -i \frac{1}{2G^+} \varepsilon [kA_1^+ + (ky - 2(1 - \nu)) A_3^+] e^{\lambda t} e^{ikx} e^{-ky}, \quad (\text{A.21a})$$

$$u_y = \frac{1 + \nu}{1 - \nu} y + \frac{1}{2G^+} \varepsilon [kA_1^+ + (ky + 1 - 2\nu) A_3^+] e^{\lambda t} e^{ikx} e^{-ky}. \quad (\text{A.21b})$$

Of course the displacements are real and we will only retain the real part in the end.

For $\mathbf{r} \in \Omega_-$ we have that

$$\sigma_{xx} = \varepsilon [k^2 A_2^- + (k^2 y + 2k) A_4^-] e^{\lambda t} e^{ikx} e^{ky} \quad (\text{A.22a})$$

$$\sigma_{yy} = -\varepsilon k^2 (A_2^- + A_4^- y) e^{\lambda t} e^{ikx} e^{ky} \quad (\text{A.22b})$$

$$\sigma_{xy} = -\varepsilon ik (A_4^- + kA_2^- + kA_4^- y) e^{\lambda t} e^{ikx} e^{ky} \quad (\text{A.22c})$$

The value of σ_{zz} and σ_{kk} can likewise be found:

$$\sigma_{zz} = 2\nu k \varepsilon A_4^- e^{\lambda t} e^{ikx} e^{-ky}, \quad (\text{A.23})$$

$$\sigma_{kk} = 2(1 + \nu) k \varepsilon A_4^- e^{\lambda t} e^{ikx} e^{-ky}. \quad (\text{A.24})$$

Also the non-zero strain elements:

$$\epsilon_{xx} = \frac{1}{2G^-} \varepsilon [k^2 A_2^- + (k^2 y + 2(1 - \nu)k) A_4^-] e^{\lambda t} e^{ikx} e^{ky}, \quad (\text{A.25a})$$

$$\epsilon_{yy} = -\frac{1}{2G^-} \varepsilon [k^2 A_2^- + (k^2 y + 2k\nu) A_4^-] e^{\lambda t} e^{ikx} e^{ky}, \quad (\text{A.25b})$$

$$\epsilon_{xy} = -\frac{1}{2G^-} \varepsilon ik (A_4^- + kA_2^- + kA_4^- y) e^{\lambda t} e^{ikx} e^{ky}. \quad (\text{A.25c})$$

Proceeding in the same way as before, we obtain the displacements

$$u_x = -i \frac{1}{2G^-} \varepsilon [kA_2^- + (ky + 2(1 - \nu)) A_4^-] e^{\lambda t} e^{ikx} e^{ky}, \quad (\text{A.26a})$$

$$u_y = -\frac{1}{2G^-} \varepsilon [kA_2^- + (ky - 1 + 2\nu) A_4^-] e^{\lambda t} e^{ikx} e^{ky}. \quad (\text{A.26b})$$

We can introduce the previous expressions for the displacement and the stress in Eqs. (A.1g) and (A.1h), and substitute $y = \varepsilon \Upsilon_1 e^{\lambda t} e^{ikx}$. Retaining terms at $O(\varepsilon)$ we obtain

$$kA_1^+ - 2(1 - \nu)A_3^+ - \frac{E_{\text{Li}_x\text{Si}}}{E_{\text{Si}}} [kA_2^- + 2(1 - \nu)A_4^-] = 0 \quad (\text{A.27a})$$

$$2 \frac{E_{\text{Li}_x\text{Si}}}{E_{\text{Si}}} \frac{1 + \nu}{1 - \nu} \Upsilon_1 + kA_1^+ + (1 - 2\nu)A_3^+ + \frac{E_{\text{Li}_x\text{Si}}}{E_{\text{Si}}} [kA_2^- - (1 - 2\nu)A_4^-] = 0 \quad (\text{A.27b})$$

$$-2 \frac{E_{\text{Li}_x\text{Si}}}{E_{\text{Si}}} \frac{1 + \nu}{1 - \nu} \Upsilon_1 - A_3^+ + kA_1^+ + A_4^- + kA_2^- = 0 \quad (\text{A.27c})$$

$$A_1^+ - A_2^- = 0 \quad (\text{A.27d})$$

We obtain two additional conditions from Eq. (A.1i)

$$F\Upsilon_1 + B_1^+ = - (k^2 + \lambda\beta) I\Upsilon_1 + \xi \frac{1 + \nu}{1 - \nu} \left\{ k^2 A_1^+ - \frac{E_{\text{Li}_x\text{Si}}}{E_{\text{Si}}} [k^2 A_2^- + 2(1 - \nu)kA_4^-] \right\}, \quad (\text{A.28a})$$

$$B_2^- = - (k^2 + \lambda\beta) I\Upsilon_1 + \xi \frac{1 + \nu}{1 - \nu} \left\{ k^2 A_1^+ - \frac{E_{\text{Li}_x\text{Si}}}{E_{\text{Si}}} [k^2 A_2^- + 2(1 - \nu)kA_4^-] \right\}. \quad (\text{A.28b})$$

Eqs. (A.15), (A.27) and (A.28) constitute then the expected homogeneous system of 7 equations with seven unknowns, A_1^+ , A_2^- , A_3^+ , A_4^- , B_1^+ , B_2^- and Υ_1 . Imposing that the determinant is zero to obtain other solutions than the trivial leads to the following expression for the growth rate λ :

$$\lambda = -k \frac{F + 2Ik^2 + Zk}{1 + 2I\beta k}, \quad (\text{A.29})$$

where Z is a constant:

$$Z = 8\xi \frac{\frac{E_{\text{Li}_x\text{Si}}}{E_{\text{Si}}} \left(1 + \frac{E_{\text{Li}_x\text{Si}}}{E_{\text{Si}}} \right) (1 + \nu)^2}{\left(3 - 4\nu + \frac{E_{\text{Li}_x\text{Si}}}{E_{\text{Si}}} \right) (1 - \nu)}, \quad (\text{A.30})$$

which contains all the elastic constants. Clearly, we recover the expected Mullins-Sekerka dispersion relation (augmented with the kinetic term) in the limit $\xi \rightarrow 0$, and the constant $Z > 0$, and hence it will have an stabilizing effect.