

2013

Haus House

Architecture Department
Rhode Island School of Design, archdept@risd.edu

Jonathan Knowles
Rhode Island School of Design, jknowles@risd.edu

Sina Almassi
Rhode Island School of Design, salmassi@alumni.risd.edu

Alexa K. Asakiewicz
Rhode Island School of Design, aasakiew@alumni.risd.edu

Jason W. Askew
Rhode Island School of Design, jaskew@alumni.risd.edu

See next page for additional authors

Follow this and additional works at: https://digitalcommons.risd.edu/techstylehaus_preliminarydesignwork



Part of the [Environmental Design Commons](#)

Recommended Citation

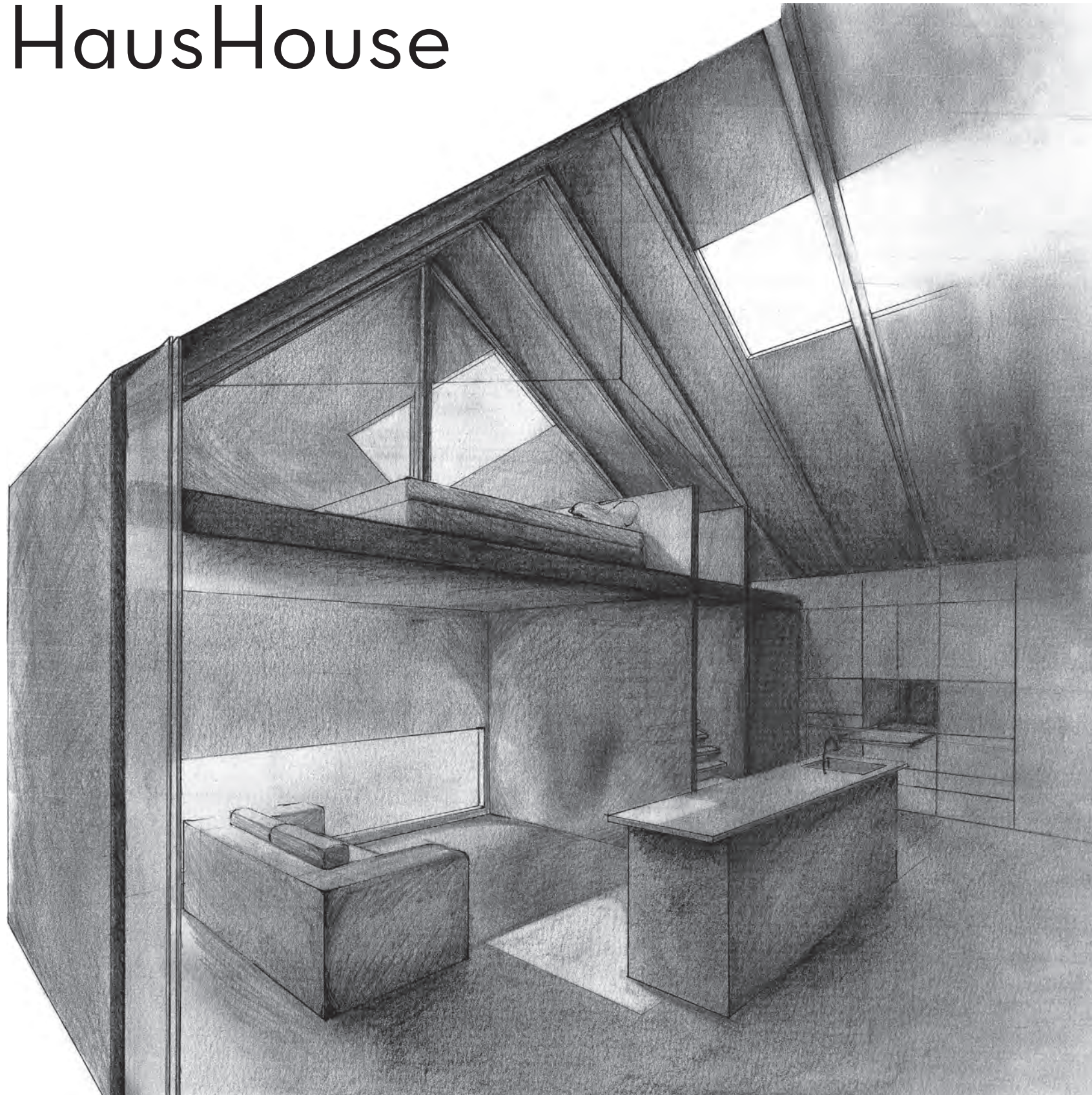
Department, Architecture; Knowles, Jonathan; Almassi, Sina; Asakiewicz, Alexa K.; Askew, Jason W.; Belardetti, Caterina; Chen, Guoyuan; Dupont-Madinier, Kim E.; Fetterolf, Sara B.; Futterer, Zachary P.; Kelman, Atara H.; Mars, John A.; McNulty, Kevin T.; Tourbah, Saja; Tran, Annabelle T.; and Wong, Cong-Xin G., "Haus House" (2013). *Preliminary Design Work*. 2.
https://digitalcommons.risd.edu/techstylehaus_preliminarydesignwork/2

This Article is brought to you for free and open access by the Solar Decathlon 2014: Techstyle Haus at DigitalCommons@RISD. It has been accepted for inclusion in Preliminary Design Work by an authorized administrator of DigitalCommons@RISD. For more information, please contact mpompeli@risd.edu.

Authors

Architecture Department, Jonathan Knowles, Sina Almassi, Alexa K. Asakiewicz, Jason W. Askew, Caterina Belardetti, Guoyuan Chen, Kim E. Dupont-Madinier, Sara B. Fetterolf, Zachary P. Futterer, Atara H. Kelman, John A. Mars, Kevin T. McNulty, Saja Tourbah, Annabelle T. Tran, and Cong-Xin G. Wong

HausHouse

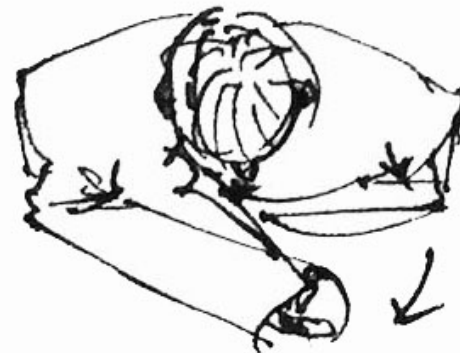


Concept

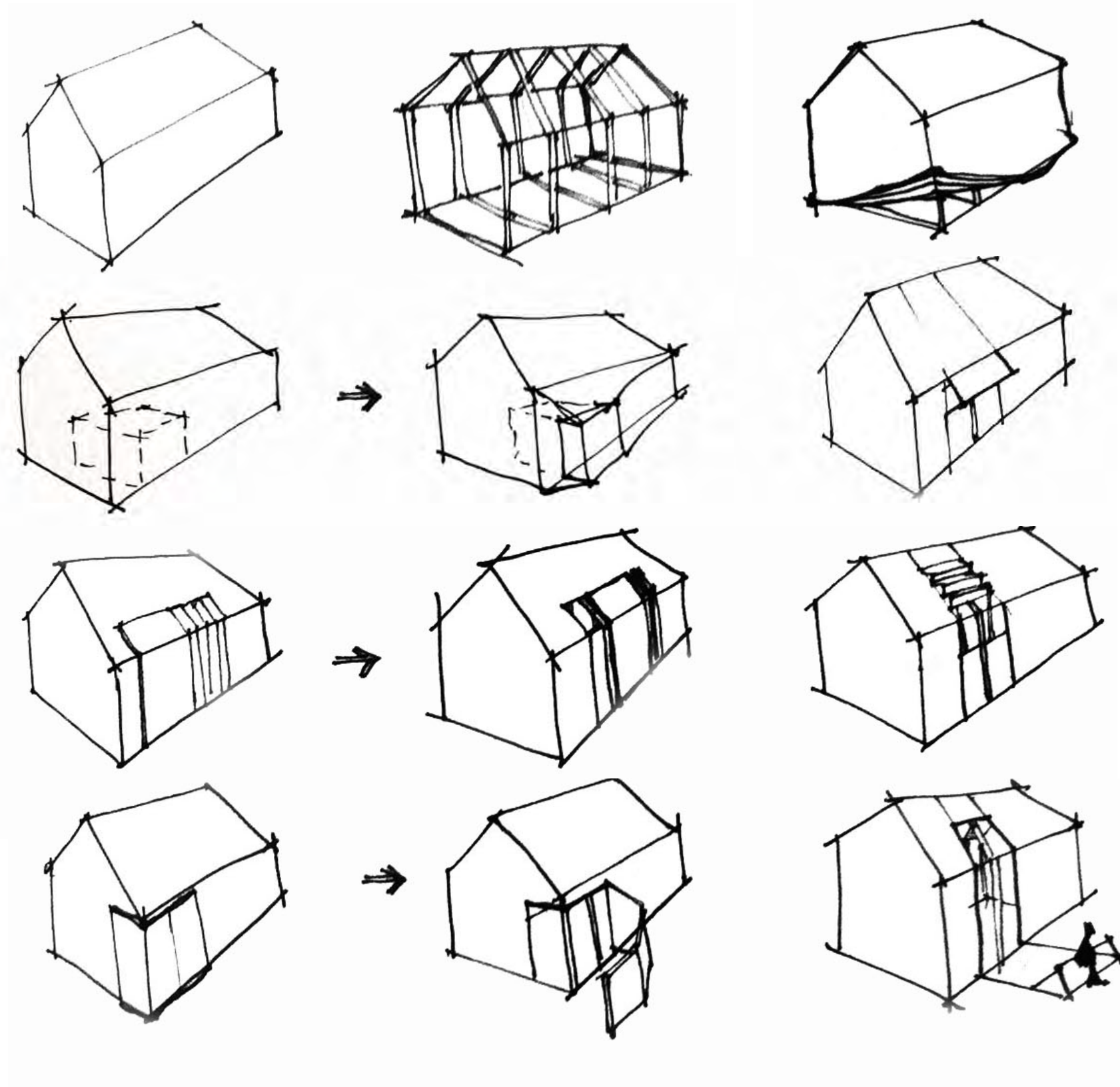
Just as a jacket can be adjusted to suit various weather conditions, so can HausHouse work to provide a living space that is capable of being tailored to the needs of the user and the changing seasons.

Using the familiar formal identity of the gable roof as a starting point, this proposal showcases the ability of textiles to challenge the material, programmatic, and ecological performance of the contemporary home.

Dynamic lighting, flexible partitions, and an expandable layered skin are just a few ways the user is empowered to make the house their own.

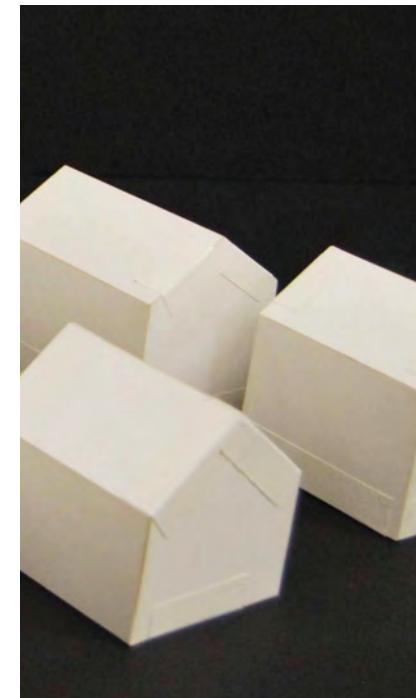
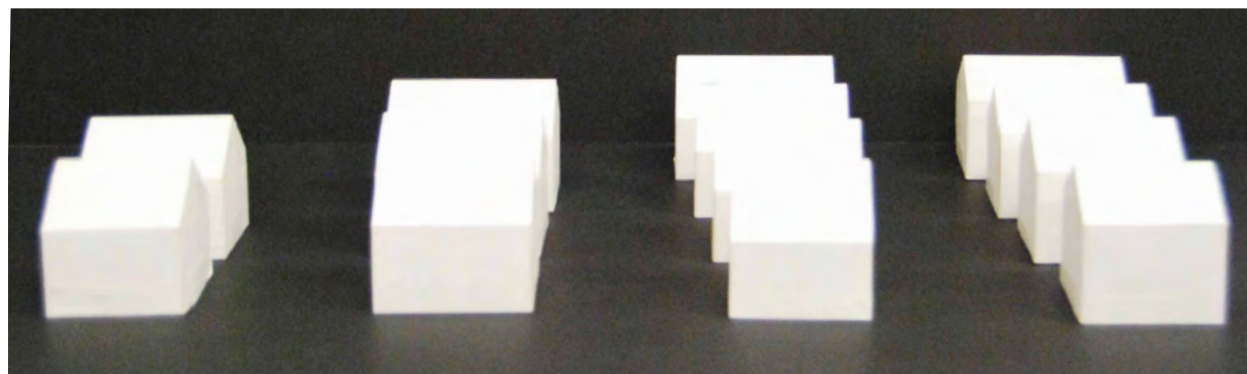
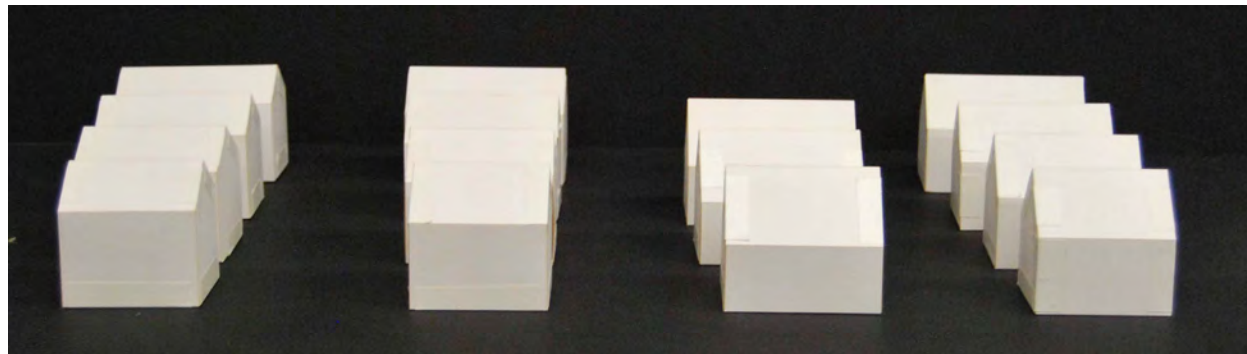
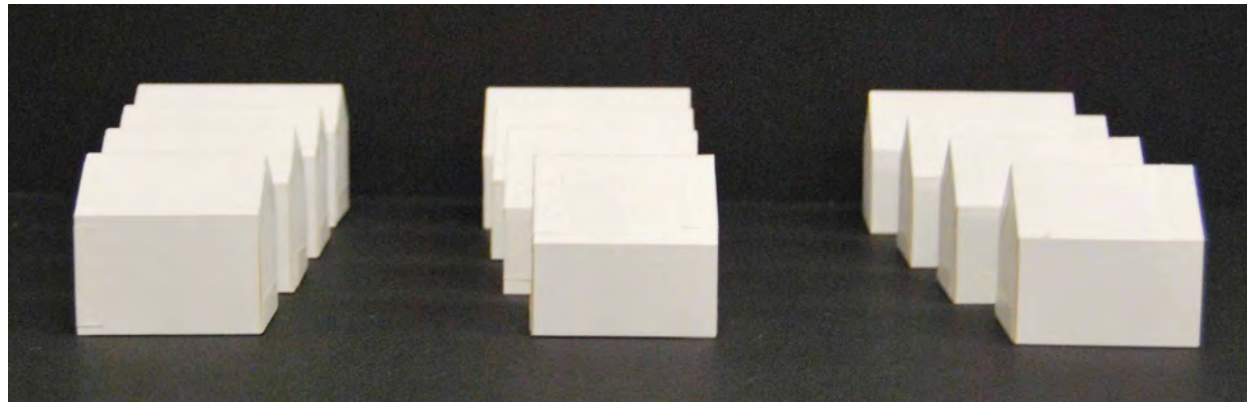
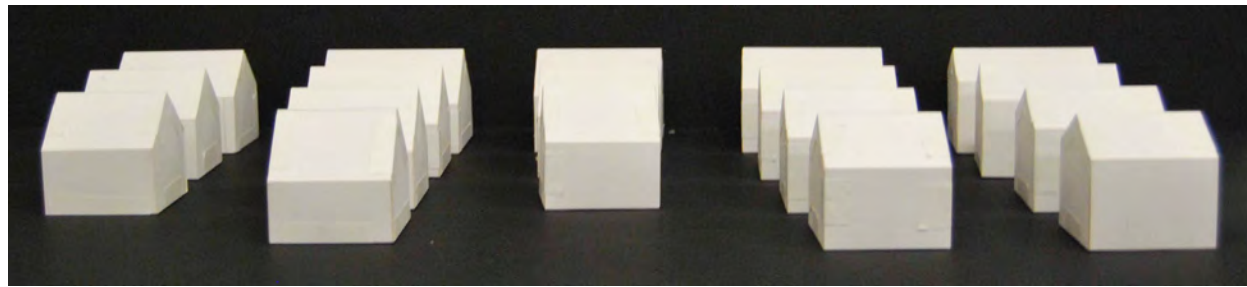
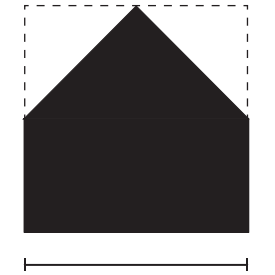


Process



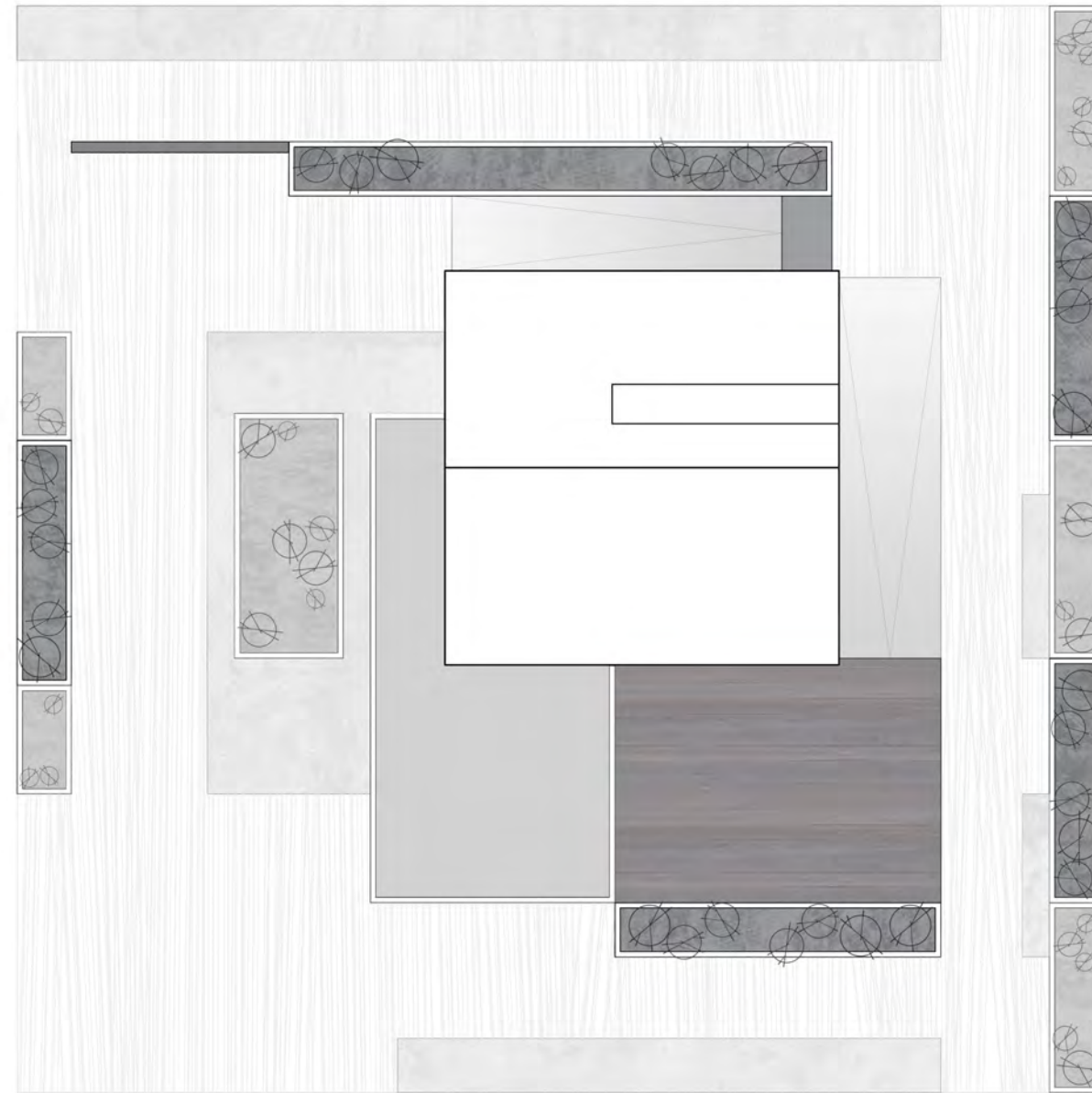
Process

proportional studies



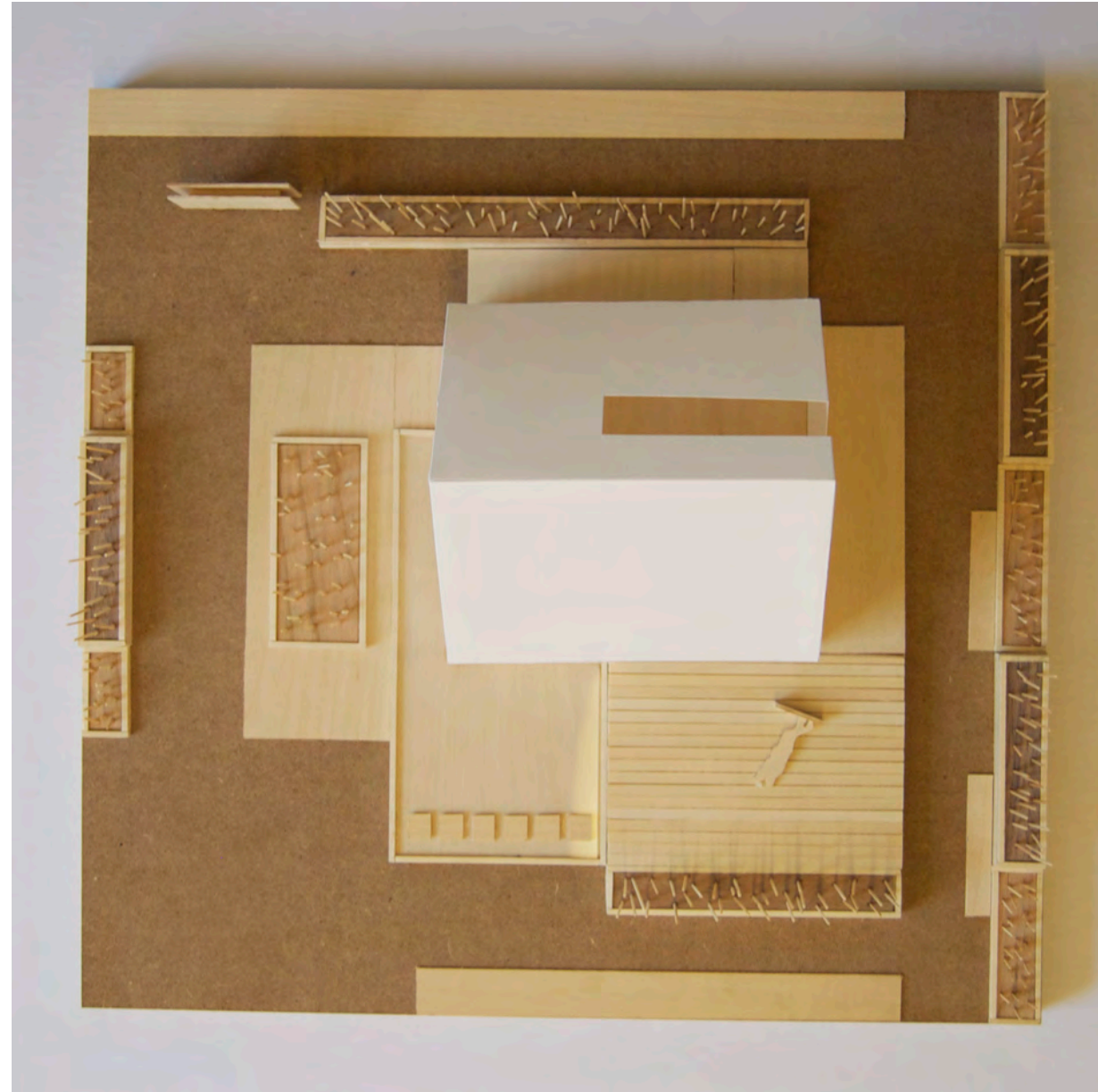
Inside HausHouse

landscape plan



Inside HausHouse

landscape plan



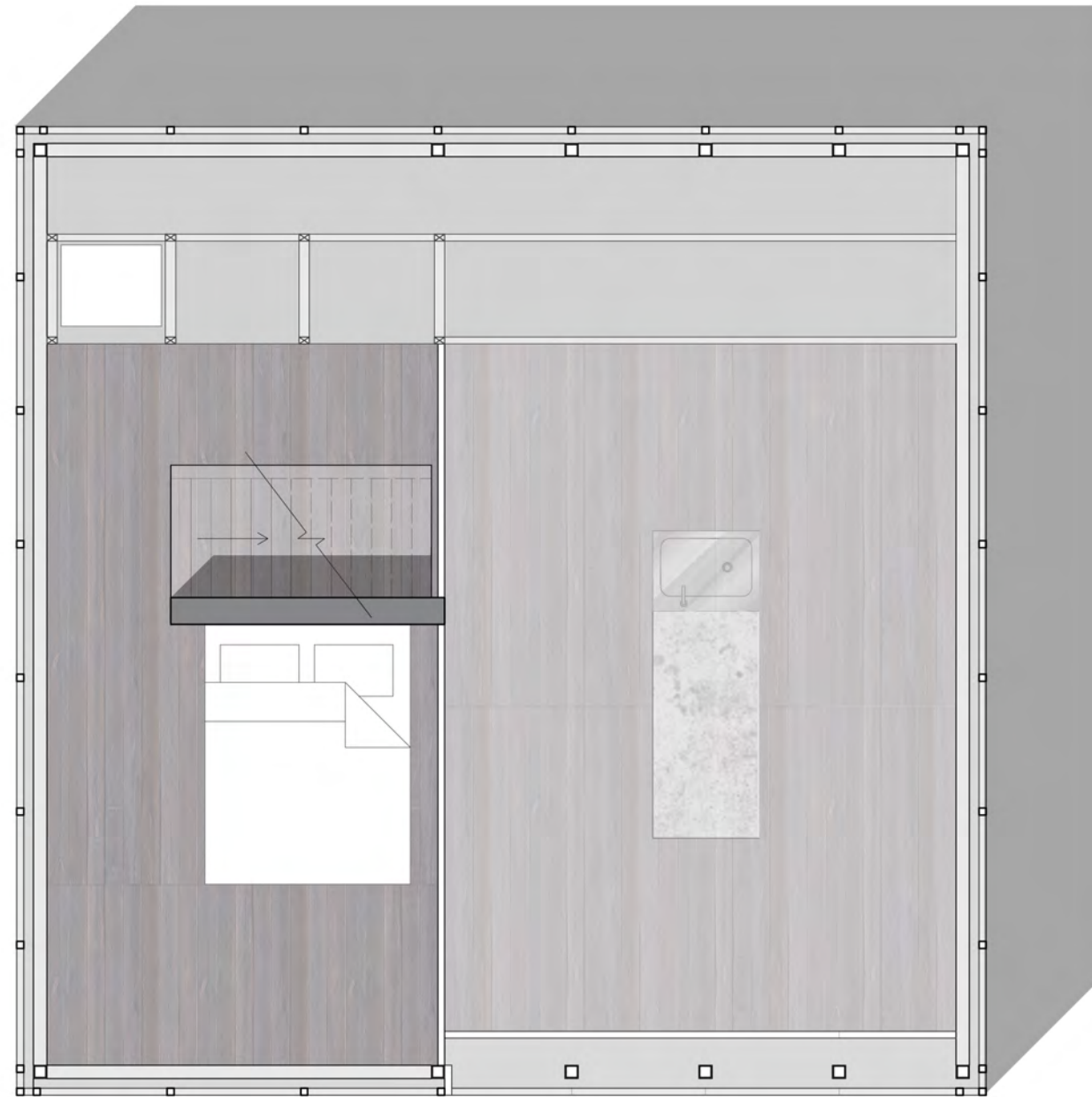
Inside HausHouse

ground plan



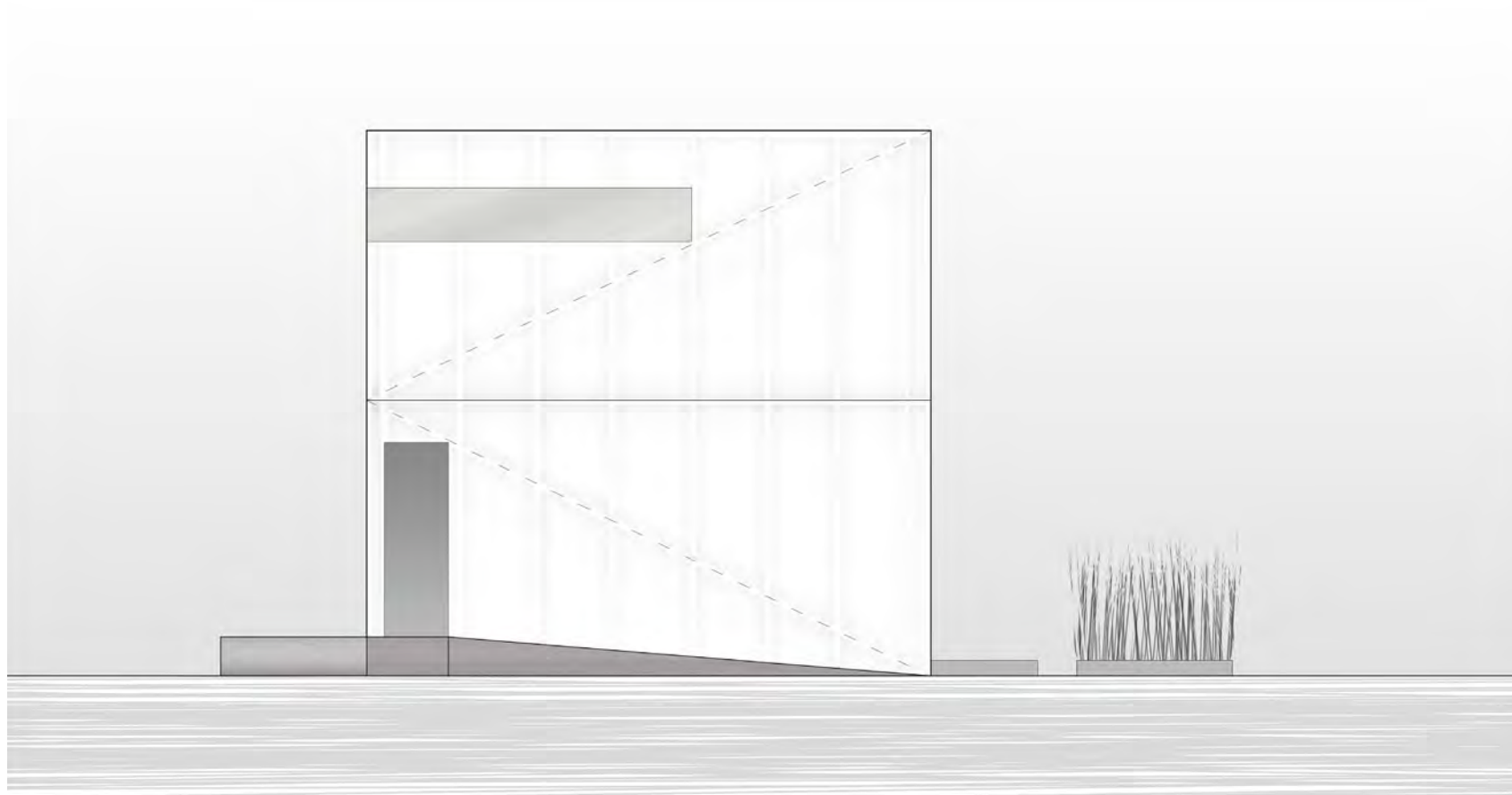
Inside HausHouse

loft plan



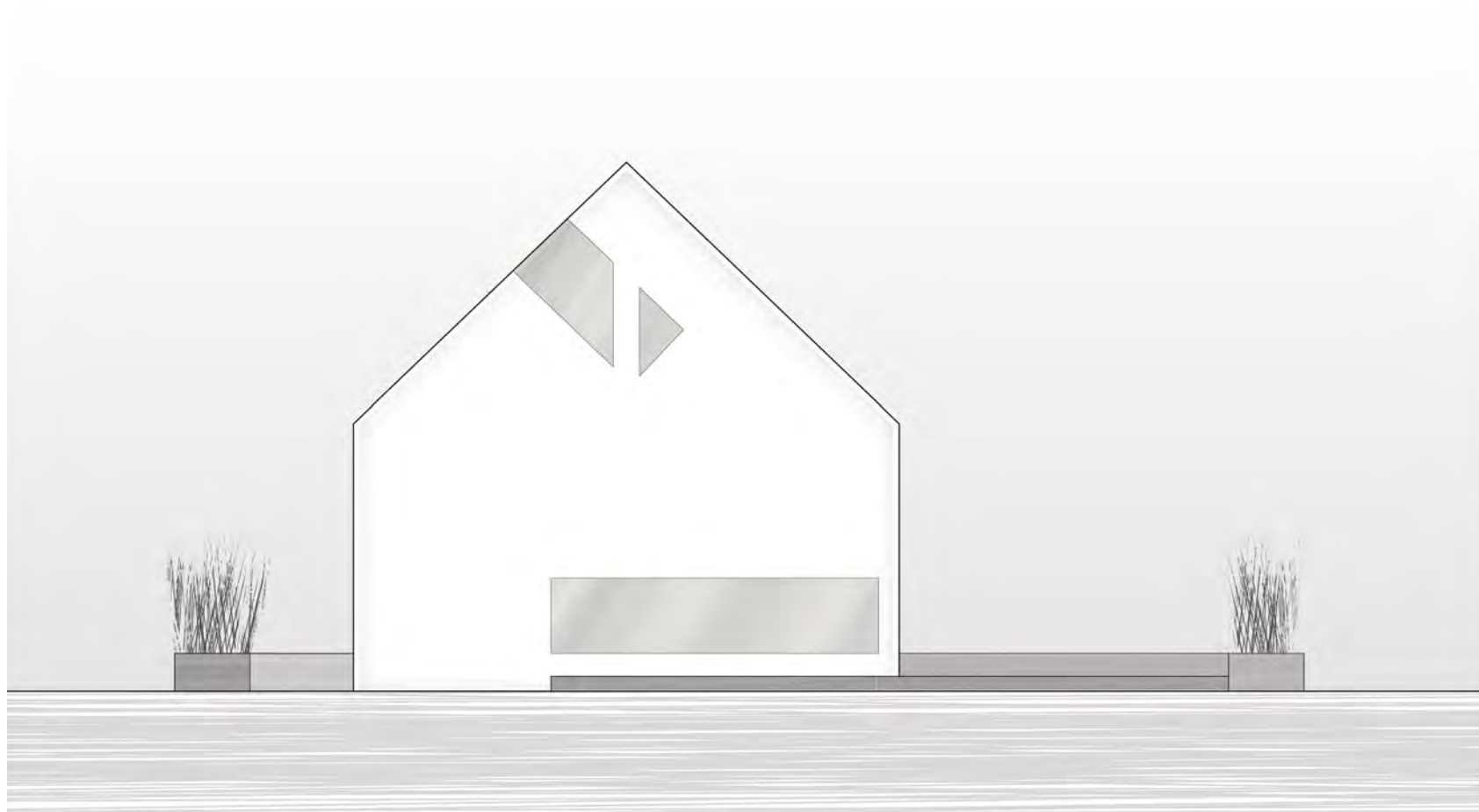
Skin

north elevation



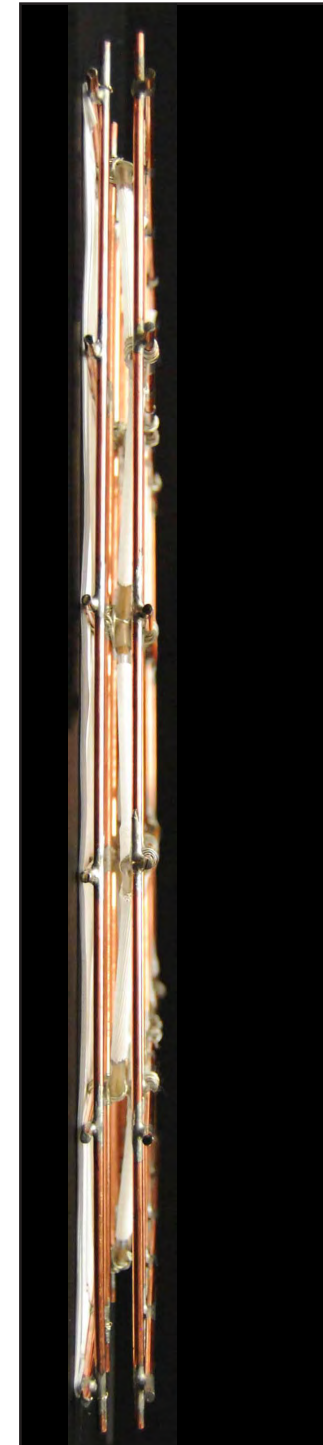
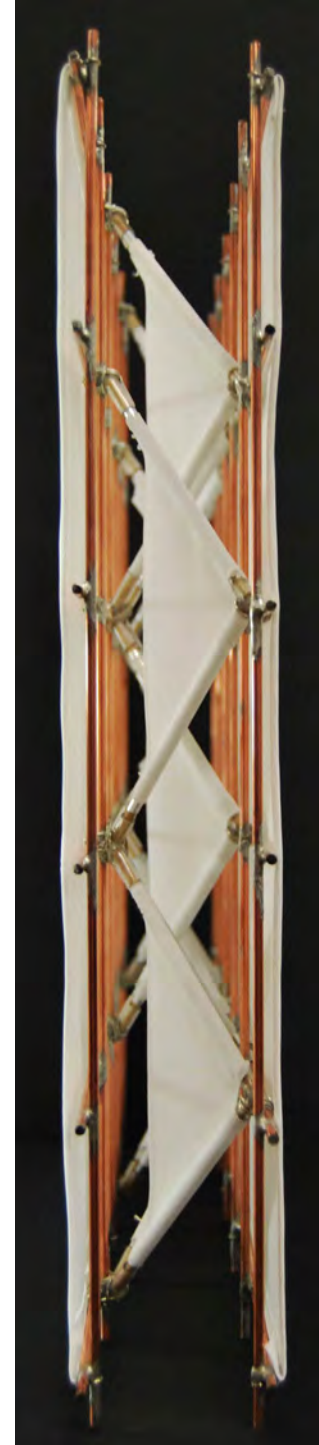
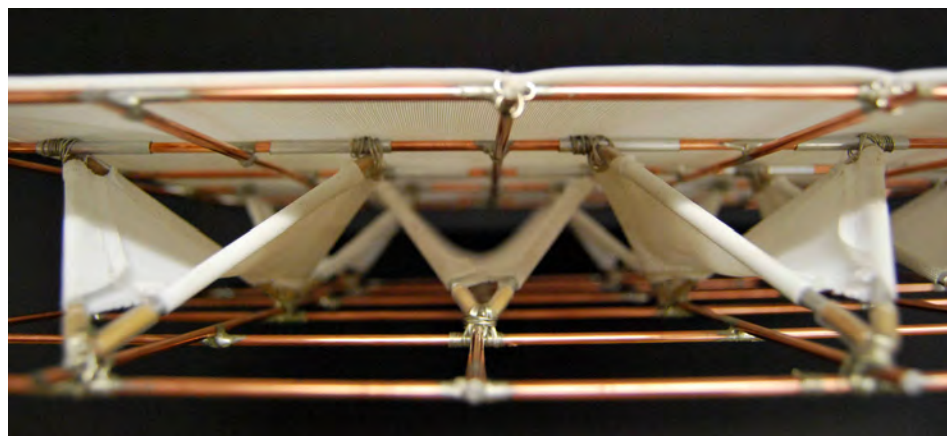
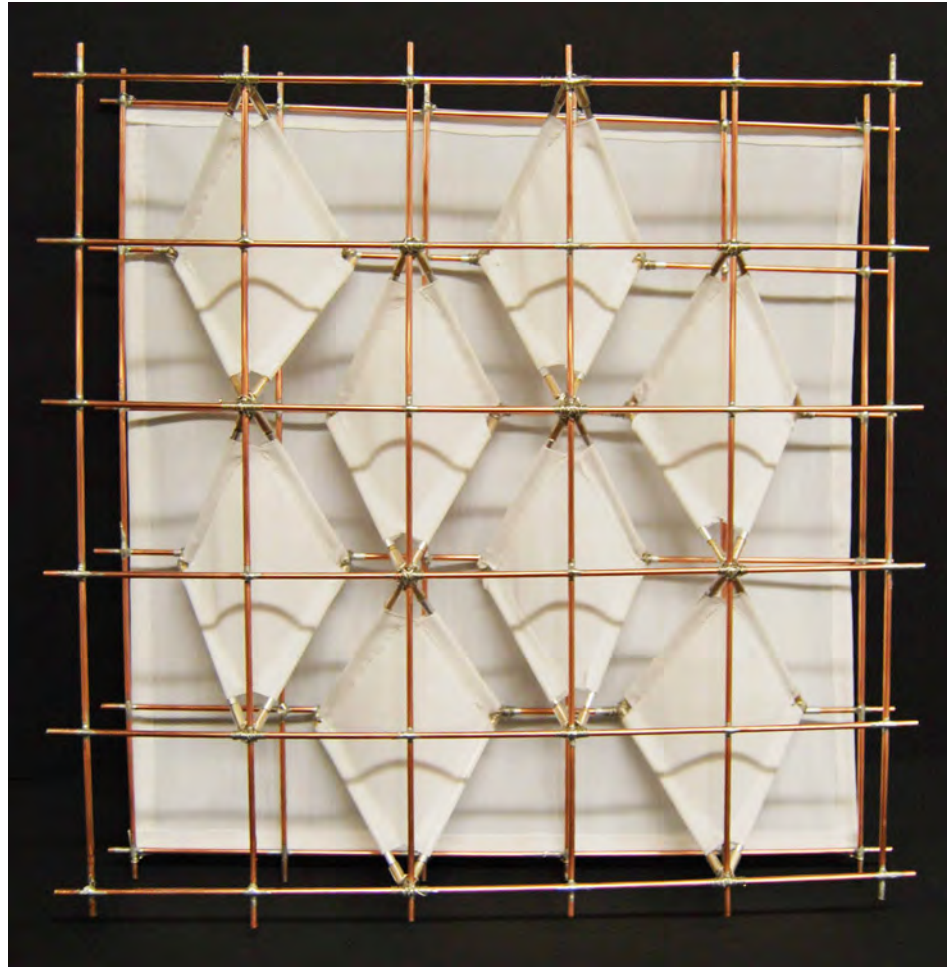
Skin

west elevation



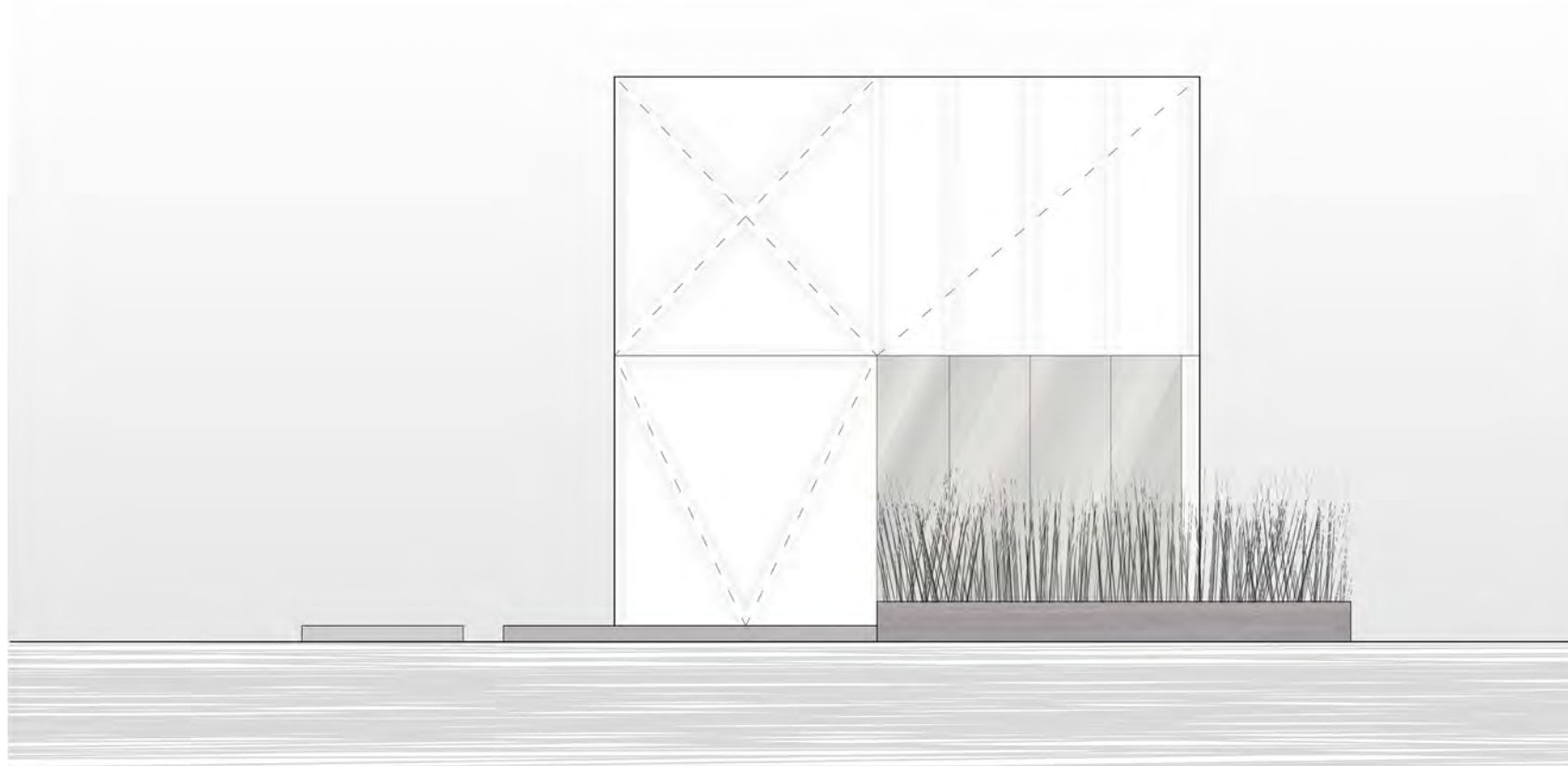
Skin

expandable wall

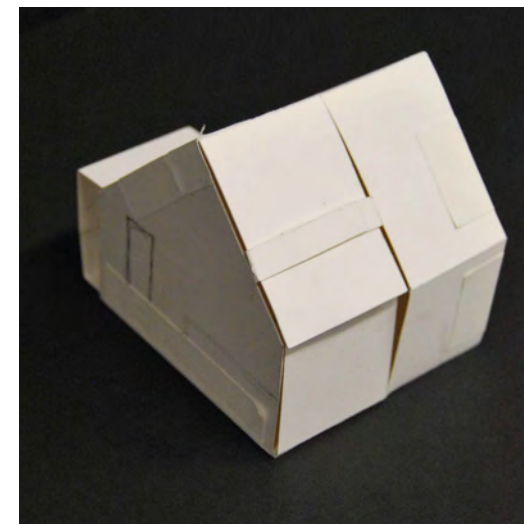
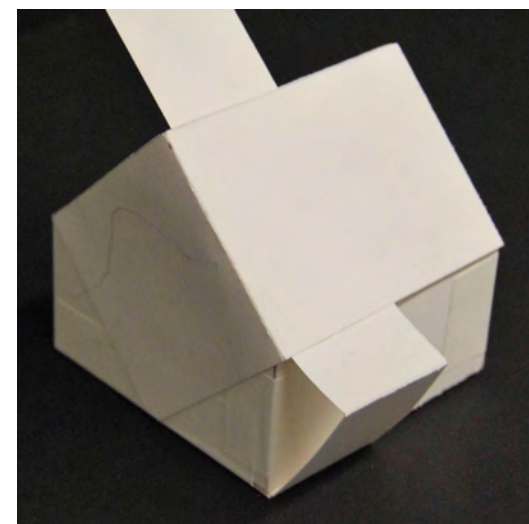
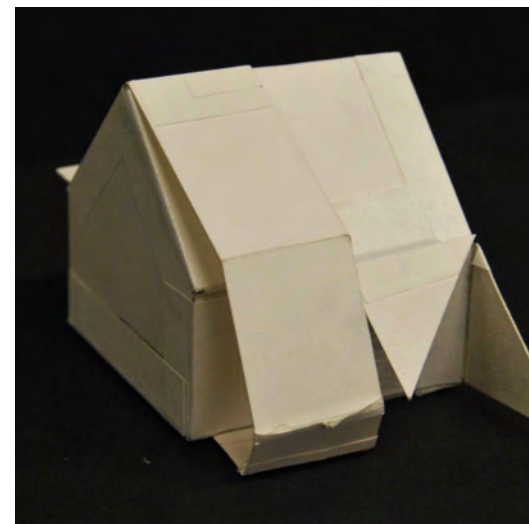
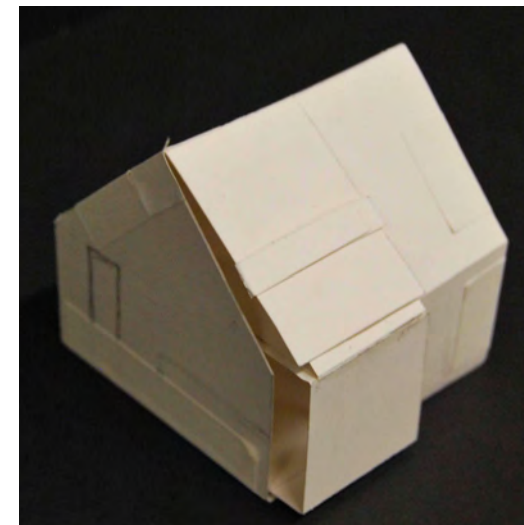
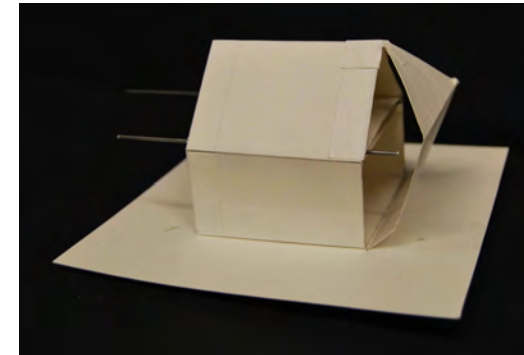
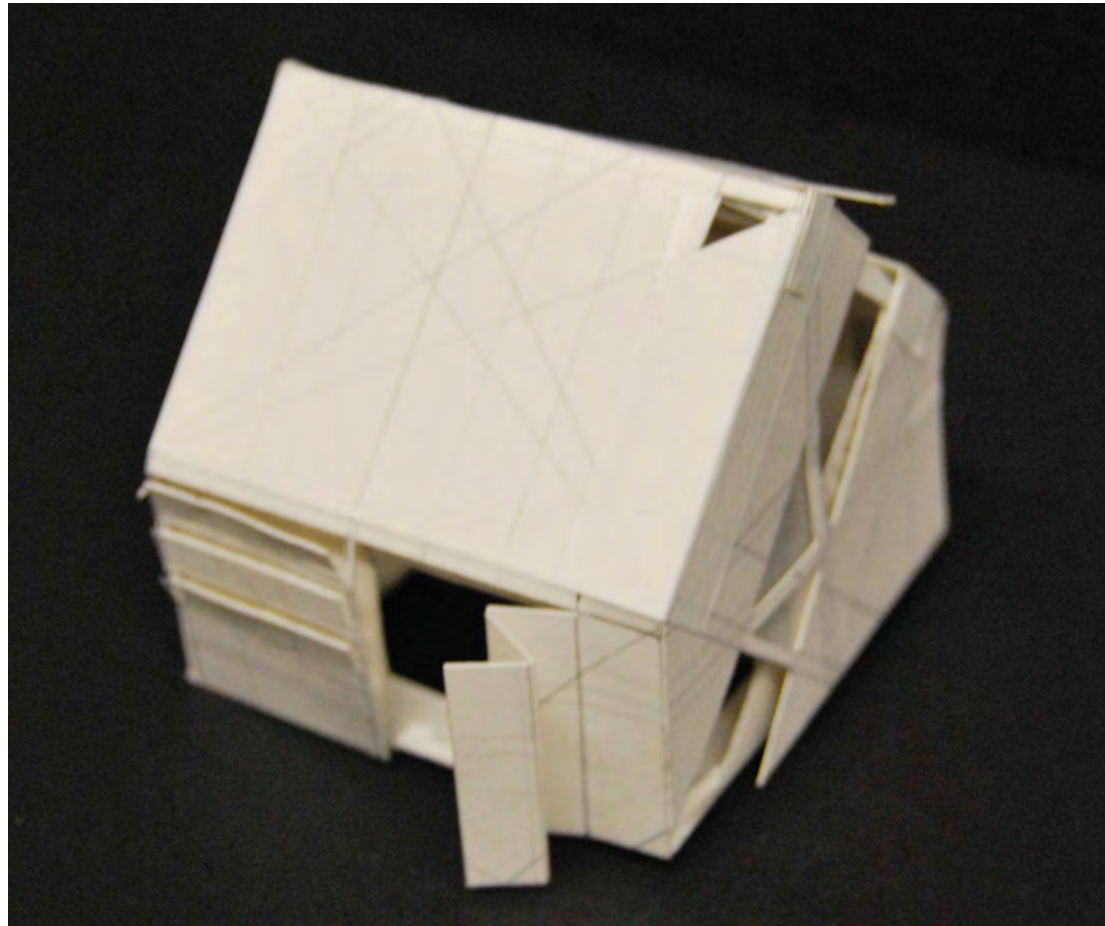


Skin

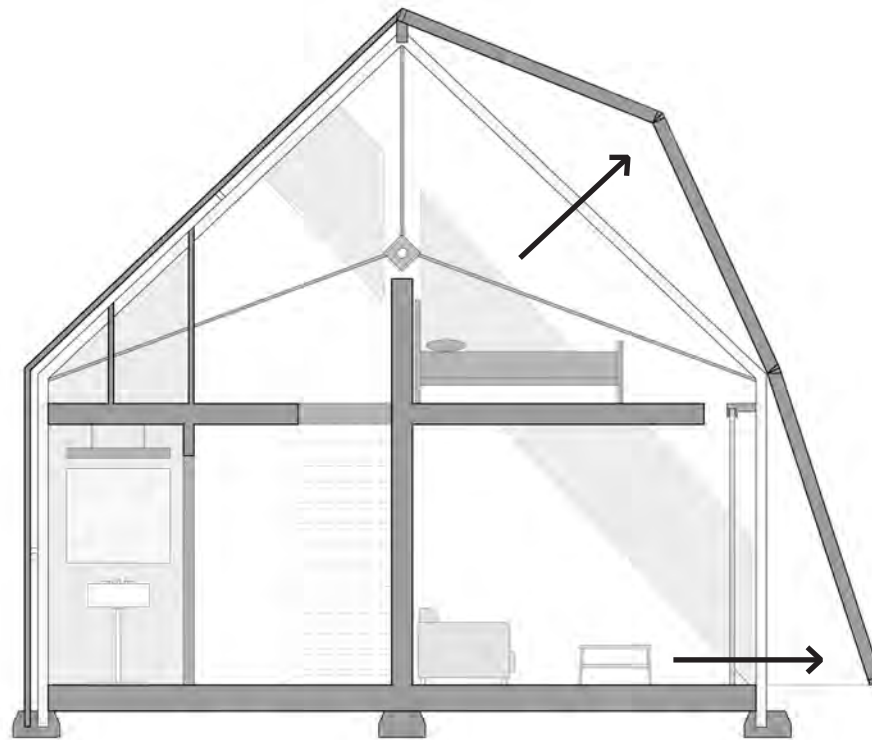
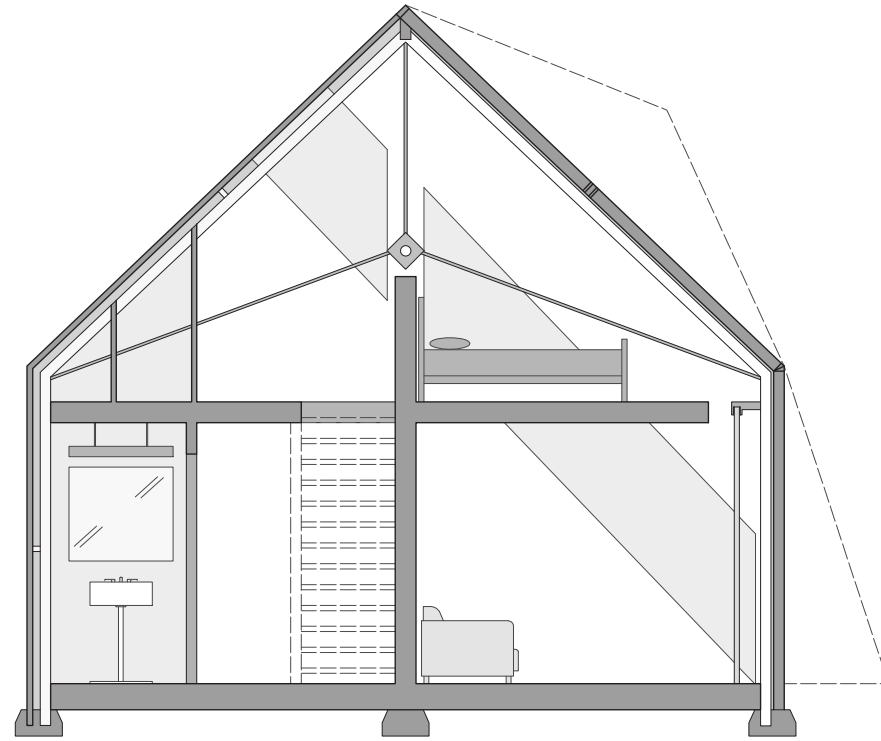
south elevation



Skin expansion



Skin section

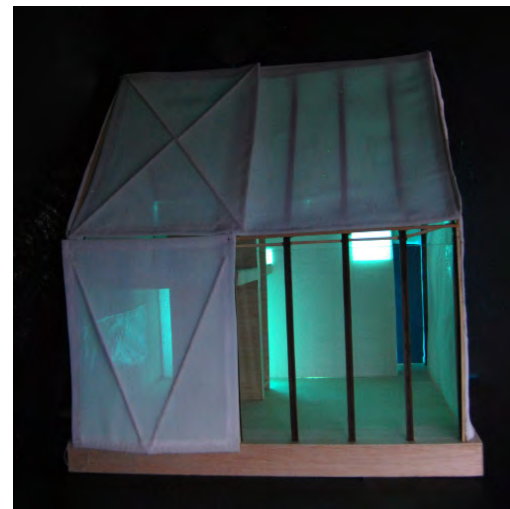


Skin

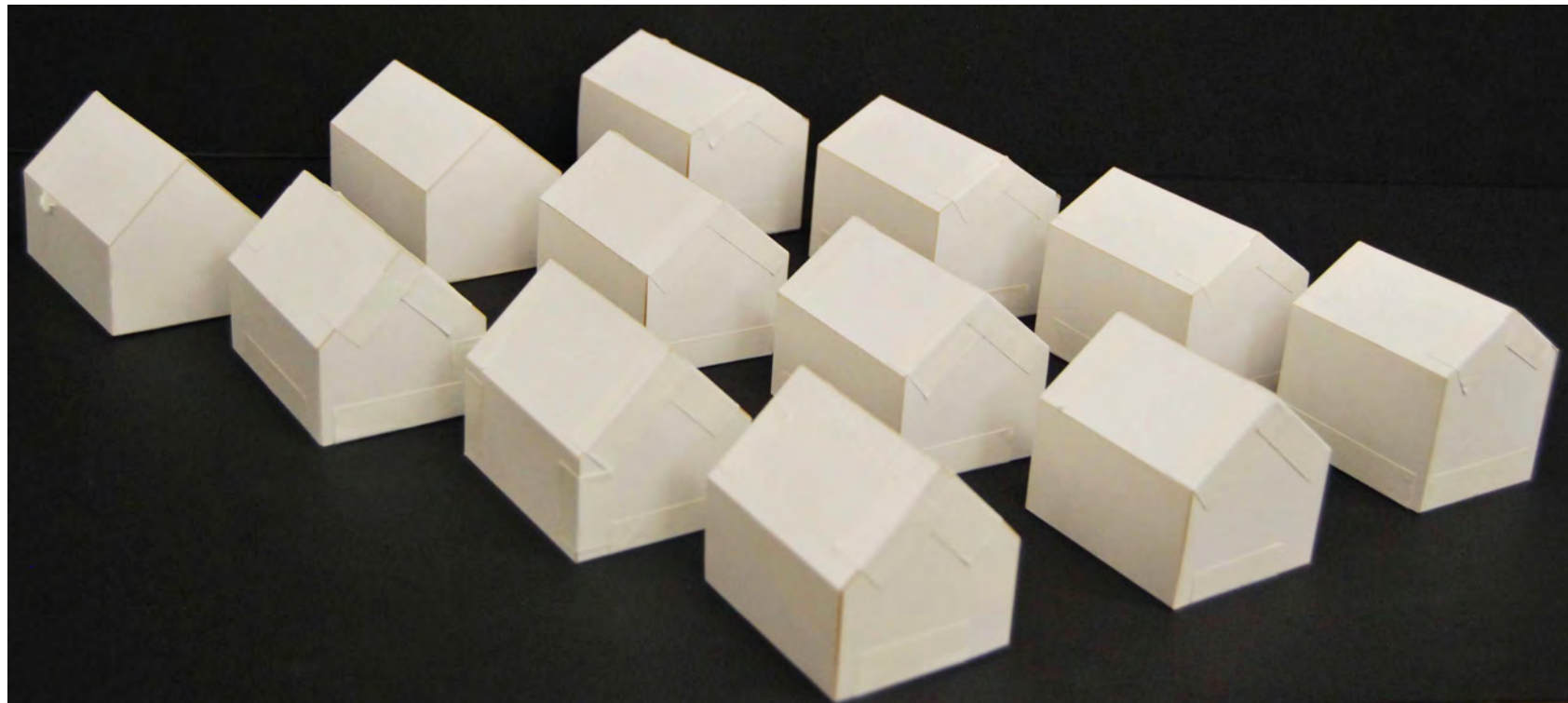
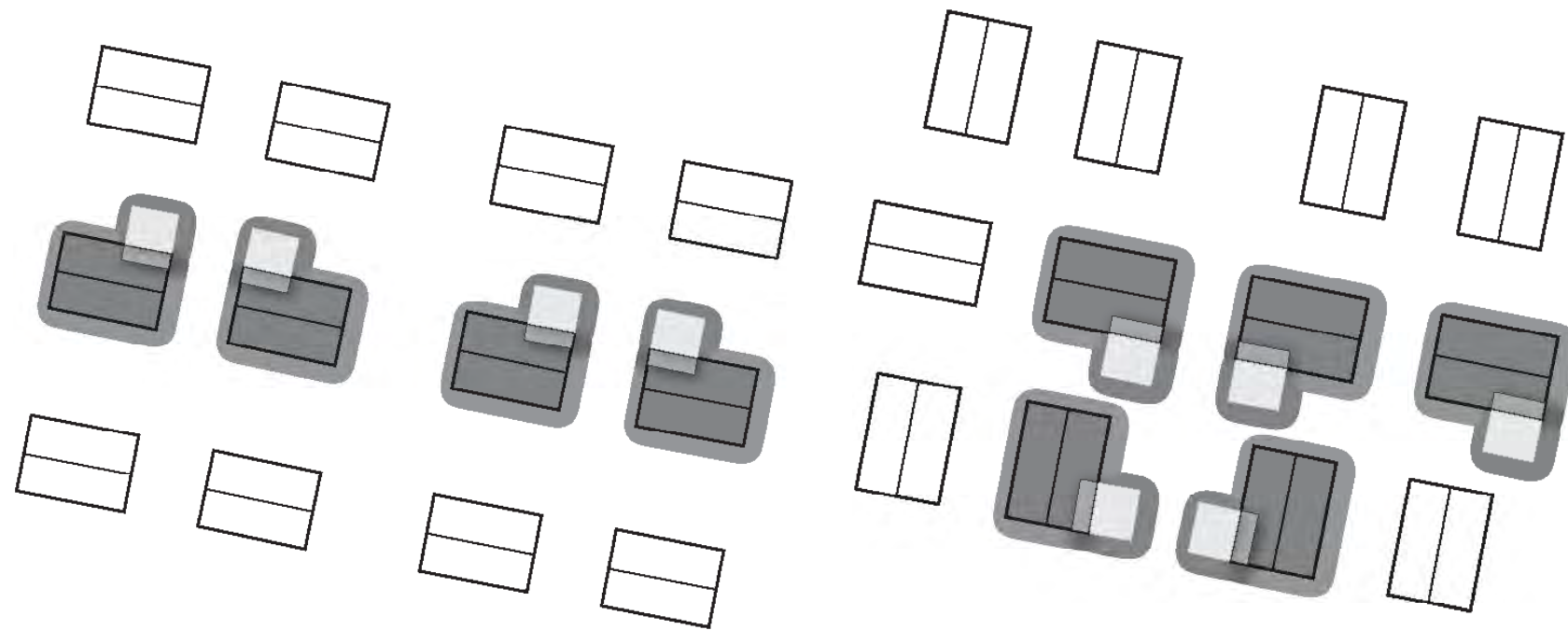
east elevation



Skin lighting



Urban Aggregation



Interior Views

