

University of Denver

Digital Commons @ DU

Chemistry and Biochemistry: Faculty  
Scholarship

Department of Chemistry and Biochemistry

2015

## The Micro-Orifice Uniform Deposit Impactor–Droplet Freezing Technique (MOUDI-DFT) for Measuring Concentrations of Ice Nucleating Particles as a Function of Size: Improvements and Initial Validation

R. H. Mason

*University of British Columbia*

C. Chou

*University of British Columbia*

C. S. McCluskey

*Colorado State University - Fort Collins*

E. J. T. Levin

*Colorado State University - Fort Collins*

Follow this and additional works at: <https://digitalcommons.du.edu/chemistryandbiochemistryfaculty>

C. L. Schiller

 [Digital Commons](#), [Environmental Commons](#), and the [Environmental Chemistry Commons](#)

### Recommended Citation

Mason, R. H.; Chou, C.; McCluskey, C. S.; Levin, E. J. T.; Schiller, C. L.; Hill, T. C. J.; Huffman, J. Alex; DeMott, P. J.; and Bertram, A. K., "The Micro-Orifice Uniform Deposit Impactor–Droplet Freezing Technique (MOUDI-DFT) for Measuring Concentrations of Ice Nucleating Particles as a Function of Size: Improvements and Initial Validation" (2015). *Chemistry and Biochemistry: Faculty Scholarship*. 1. <https://digitalcommons.du.edu/chemistryandbiochemistryfaculty/1>



This work is licensed under a [Creative Commons Attribution 4.0 License](#).

This Article is brought to you for free and open access by the Department of Chemistry and Biochemistry at Digital Commons @ DU. It has been accepted for inclusion in Chemistry and Biochemistry: Faculty Scholarship by an authorized administrator of Digital Commons @ DU. For more information, please contact [jennifer.cox@du.edu](mailto:jennifer.cox@du.edu), [dig-commons@du.edu](mailto:dig-commons@du.edu).

---

**Authors**

R. H. Mason, C. Chou, C. S. McCluskey, E. J. T. Levin, C. L. Schiller, T. C. J. Hill, J. Alex Huffman, P. J. DeMott, and A. K. Bertram



# The micro-orifice uniform deposit impactor–droplet freezing technique (MOUDI-DFT) for measuring concentrations of ice nucleating particles as a function of size: improvements and initial validation

R. H. Mason<sup>1</sup>, C. Chou<sup>1</sup>, C. S. McCluskey<sup>2</sup>, E. J. T. Levin<sup>2</sup>, C. L. Schiller<sup>3</sup>, T. C. J. Hill<sup>2</sup>, J. A. Huffman<sup>4</sup>, P. J. DeMott<sup>2</sup>, and A. K. Bertram<sup>1</sup>

<sup>1</sup>Department of Chemistry, University of British Columbia, Vancouver, BC V6T 1Z1, Canada

<sup>2</sup>Department of Atmospheric Sciences, Colorado State University, Fort Collins, CO 80523, USA

<sup>3</sup>Air Quality Science Unit, Environment Canada, Vancouver, BC V6C 3S5, Canada

<sup>4</sup>Department of Chemistry and Biochemistry, University of Denver, Denver, CO 80208, USA

Correspondence to: A. K. Bertram (bertram@chem.ubc.ca)

Received: 2 February 2015 – Published in Atmos. Meas. Tech. Discuss.: 27 February 2015

Revised: 12 May 2015 – Accepted: 18 May 2015 – Published: 15 June 2015

**Abstract.** The micro-orifice uniform deposit impactor–droplet freezing technique (MOUDI-DFT) combines particle collection by inertial impaction (via the MOUDI) and a microscope-based immersion freezing apparatus (the DFT) to measure atmospheric concentrations of ice nucleating particles (INPs) as a function of size and temperature. In the first part of this study we improved upon this recently introduced technique. Using optical microscopy, we investigated the non-uniformity of MOUDI aerosol deposits at spatial resolutions of 1, 0.25 mm, and for some stages when necessary 0.10 mm. The results from these measurements show that at a spatial resolution of 1 mm and less, the concentration of particles along the MOUDI aerosol deposits can vary by an order of magnitude or more. Since the total area of a MOUDI aerosol deposit ranges from 425 to 605 mm<sup>2</sup> and the area analyzed by the DFT is approximately 1.2 mm<sup>2</sup>, this non-uniformity needs to be taken into account when using the MOUDI-DFT to determine atmospheric concentrations of INPs. Measurements of the non-uniformity of the MOUDI aerosol deposits were used to select positions on the deposits that had relatively small variations in particle concentration and to build substrate holders for the different MOUDI stages. These substrate holders improve reproducibility by holding the substrate in the same location for each measurement and ensure that DFT analysis is only performed on substrate regions with relatively small variations in particle con-

centration. In addition, the deposit non-uniformity was used to determine correction factors that take the non-uniformity into account when determining atmospheric concentrations of INPs. In the second part of this study, the MOUDI-DFT utilizing the new substrate holders was compared to the continuous flow diffusion chamber (CFDC) technique of Colorado State University. The intercomparison was done using INP concentrations found by the two instruments during ambient measurements of continental aerosols. Results from two sampling periods were compared, and the INP concentrations determined by the two techniques agreed within experimental uncertainty. The agreement observed here is commensurate with the level of agreement found in other studies where CFDC results were compared to INP concentrations measured with other methods.

## 1 Introduction

Ice formation in the atmosphere can occur via two different processes: homogeneous and heterogeneous nucleation. Below approximately  $-37^{\circ}\text{C}$ , ice can form by homogeneous nucleation. At higher temperatures, ice forms by a heterogeneous process that is initiated by ice nucleating particles (INPs). These INPs have surface properties that lower the energy barrier to the formation of crystalline ice. Hetero-

geneous ice nucleation can be divided into four categories (Pruppacher and Klett, 1997; Vali et al., 2014) that are briefly described as follows: deposition nucleation, where ice forms on the surface of the INP directly from the vapor phase without the occurrence of liquid water; condensation freezing, where ice forms as water vapor condenses onto the INP; contact freezing, whereby an INP collides with a supercooled liquid droplet; and immersion freezing, whereby an INP within a supercooled liquid droplet initiates freezing.

Possible atmospheric particles that can act as INPs include mineral dust; black carbon; glassy aerosols; and biological particles such as bacteria, lichen, fungal spores, pollen spores, and marine diatoms (for details see reviews by Szyrmer and Zawadzki, 1997; Després et al., 2012; Hoose and Möhler, 2012; Murray et al., 2012, and references therein). Information on the concentrations and activity of INPs is needed to predict the frequency and properties of mixed-phase and ice clouds in the atmosphere and hence the effect of aerosol particles on climate and precipitation (Lohmann, 2002; Zeng et al., 2009; Storelvmo et al., 2011; Gettelman et al., 2012; Costa et al., 2014).

Over the past several decades there has been a significant effort to develop instrumentation for measuring INP concentrations in the atmosphere (DeMott et al., 2011). While much of this research has focused on measuring the total concentration of INPs in the atmosphere in real time, determining their concentration as a function of size has also been a subject of interest. Knowing the size of INPs may be useful in identifying their source or modeling their transport in the atmosphere. In addition, size-resolved measurements would be useful to determine if some current techniques for measuring the total concentration of INPs are missing an important fraction of the INP population. For example, instruments based on the continuous flow diffusion chamber (CFDC) design of Rogers et al. (2001) limit the size of particles analyzed to those with an aerodynamic diameter  $\leq 0.75 \mu\text{m}$  in some cases (DeMott et al., 2003) and  $\leq 2.4 \mu\text{m}$  in others (Garcia et al., 2012).

Most approaches to measuring the concentration of INPs as a function of particle size involve particle size selection either by inertial separation (Prodi et al., 1980; Rosinski et al., 1986, 1987, 1988; Berezinski et al., 1988; Santachiara et al., 2010) or by filtration (Vali, 1966; Langer and Rodgers, 1975), both followed by freezing measurements. These methods have all been limited to freezing temperatures of approximately  $-25^\circ\text{C}$  or greater, likely due to significant background counts at lower temperatures. Furthermore, the separation of aerosol particles by filter pore size provides only limited size resolution. Another approach for determining the size of INPs involves the analysis of ice crystal residuals as a function of size using single-particle mass spectrometry or electron microscopy (Chen et al., 1998; Petzold et al., 1998; Cziczo, 2004; Targino et al., 2006; Richardson et al., 2007; Pratt et al., 2010).

In addition to the approaches mentioned above, Huffman et al. (2013) recently introduced the micro-orifice uniform deposit impactor–droplet freezing technique (MOUDI-DFT) for measuring the concentration of INPs as a function of size. This technique addresses some of the limitations of previous size-resolving instrumentation. A rotating MOUDI (MSP Corp., Shoreview, MN, USA) capable of obtaining 10 size-fractionated samples spanning  $0.056\text{--}18 \mu\text{m}$  (Marple et al., 1991) is used for aerosol collection. The ice nucleating properties of collected particles are then determined in the laboratory by a microscope-based droplet freezing technique (the DFT) that is capable of measuring the concentrations of INPs in the immersion mode to a temperature of approximately  $-37^\circ\text{C}$  (Koop et al., 1998; Chernoff and Bertram, 2010; Haga et al., 2013, 2014; Wheeler et al., 2015), which is roughly the homogeneous freezing temperature of water droplets  $100 \mu\text{m}$  in diameter (Pruppacher and Klett, 1997). The MOUDI-DFT permits measurements at a higher size resolution and over a wider range of temperatures than most of the size-resolved instrumentation discussed above. As an offline technique, the MOUDI-DFT is also suitable for remote measurements where a dedicated operator may not be available to continuously monitor a real-time instrument. Others have also used an inertial impactor in conjunction with a microscope-based technique to study ice nucleation by aerosol particles (e.g., Knopf et al., 2010, 2014; Wang et al., 2012a, 2012b).

When particles are collected with a rotating MOUDI, the concentration of particles on a collection substrate is not uniform; rather the concentration varies with distance from the center of the aerosol deposit. For example, Maenhaut et al. (1993) analyzed the uniformity of MOUDI samples using particle-induced X-ray emission (PIXE) and showed that particle concentrations on the MOUDI aerosol deposits varied by at least 25 % at a spatial resolution of 2 mm. Since a MOUDI aerosol deposit covers an area of 425 to 605 mm<sup>2</sup> (depending on the stage) while the area of the MOUDI aerosol deposit analyzed by the DFT and a  $5\times$  magnification objective lens is only 1.2 mm<sup>2</sup>, non-uniformity can lead to significant uncertainty in atmospheric concentrations of INPs. Huffman et al. (2013) used the non-uniformity results of Maenhaut et al. (1993) to estimate uncertainties in the INP concentrations determined with the MOUDI-DFT. However, the uncertainty was poorly constrained since the non-uniformity was not known at a sufficient spatial resolution, e.g., 0.25–1 mm.

In the following paper we improve on the MOUDI-DFT approach. We first measure the concentration of particles on the MOUDI aerosol deposits as a function of distance from the center of the deposits to determine aerosol deposit non-uniformity. We then use these non-uniformity measurements to build substrate holders for the different MOUDI stages and calculate correction factors to be used when determining INP concentrations using the new substrate holders.

In addition to improving the MOUDI-DFT, for method validation we compare results from the MOUDI-DFT using the new substrate holders with results from a CFDC operated by Colorado State University (CSU) during a measurement campaign at CSU. The CFDC technique is a well-accepted approach for quantifying INP concentrations in the atmosphere. When comparing results from the two instruments, only particles collected onto MOUDI stages with an upper range  $\leq 2.4 \mu\text{m}$  are considered to ensure that the particle size ranges measured by the two instruments corresponded. As highlighted by DeMott et al. (2011), intercomparison studies of INP instrumentation are important for finding potential biases or deficiencies present in the methods, relating independent data sets, and identifying where efforts for instrument improvement should be focused.

## 2 Experimental

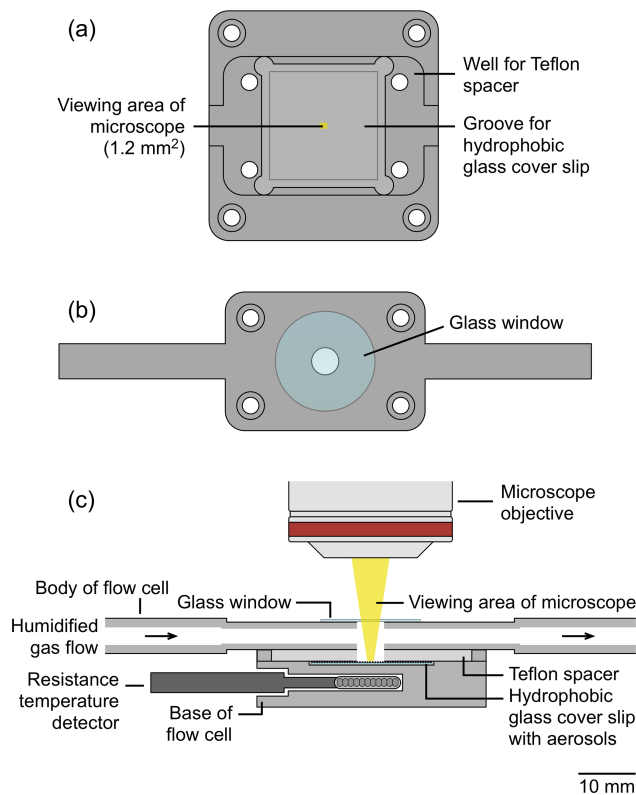
### 2.1 Micro-orifice uniform deposit impactor (MOUDI)

The MOUDI is a standard device for sampling aerosol particles (Chow and Watson, 2007). The version used here (MOUDI II 120R) contains a sample inlet to remove particles greater than  $18 \mu\text{m}$ , 10 collection stages spanning a size range of  $0.056\text{--}18 \mu\text{m}$ , and an after-filter to collect any remaining particles. All reported sizes are the 50 % cutoff aerodynamic diameter. Each stage contains a nozzle plate that consists of a series of nozzles that direct the sample and an impaction plate upon which substrates are located for collecting particles. A detailed description of MOUDI operation can be found in Marple et al. (1991), with corresponding theoretical considerations in Marple and Willeke (1976). In this work, hydrophobic glass cover slips (HR3-215; Hampton Research, Aliso Viejo, CA, USA) were used as the collection substrates.

To determine the aerosol deposit non-uniformity, the collection substrates were located roughly in the center of the impaction plates and held in place by a small piece of tape running along one edge of the hydrophobic glass cover slip. For the field measurements at CSU, substrate holders were used to position the sampling substrate at a location on the impaction plate where particle concentrations varied by a relatively small amount (see Sect. 2.5 for details on the design of the substrate holders). As the hydrophobic glass cover slips are thicker than the aluminum foils with which the manufacturer calibrated the cut point of each stage, spacers were added between the stages to compensate for the reduced nozzle plate-to-impaction plate distance.

### 2.2 Droplet freezing technique (DFT)

Particles collected by the MOUDI were analyzed for their ability to act as INPs in the immersion freezing mode. The DFT used here has been employed previously to study immersion freezing by biological particles and mineral dust



**Figure 1.** Schematic diagram of the droplet freezing apparatus used in measurements of INPs: (a) the base of the flow cell with a groove to position the hydrophobic glass cover slip; (b) the body of the flow cell; and (c) the cross section of the flow cell aligned with the optical axis of the microscope.

(Chernoff and Bertram, 2010; Wheeler and Bertram, 2012; Haga et al., 2013, 2014; Wheeler et al., 2015). The technique is based in part on the earlier design of Koop et al. (2000). A flow cell with temperature and humidity control was coupled to an optical microscope equipped with a CCD camera as illustrated in Fig. 1.

The flow cell consists of a base, Teflon spacer, body, and top window. A groove is located within the base of the flow cell to position the hydrophobic glass cover slip. The location of the groove is such that the center of the hydrophobic glass cover slip is at the center of the flow cell and can be aligned with the optical axis of the microscope. A Teflon spacer sits on top of the hydrophobic glass cover slip to provide thermal isolation between the base of the flow cell and the body of the flow cell. This ensures that the hydrophobic glass cover slip is the coldest spot within the flow cell and therefore the location where ice will form. The body of the flow cell contains channels through which humidified air can flow. A resistance temperature detector (RTD) was located within the base of the flow cell directly beneath the hydrophobic glass cover slip. The RTD was calibrated against the melting point of pure water droplets of approximately  $120 \mu\text{m}$  in diameter,

and the measured offset from the expected 0 °C was used to correct all freezing temperatures.

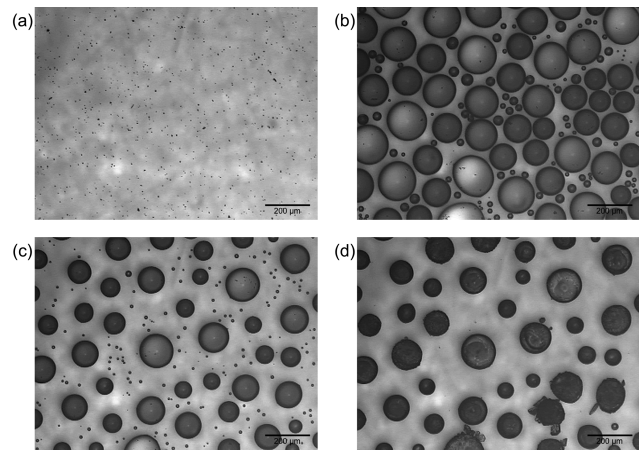
The optical microscope used in the experiments was an Axiolab (Zeiss, Oberkochen, Germany) with an EC Plan-Neofluar 5× objective (Zeiss). This resulted in a viewing area in the DFT of 1.2 mm<sup>2</sup>. Based on the accuracy of the substrate holders, the location of the groove in the base of the flow cell, and the alignment of the hydrophobic glass cover slip with the optical axis of the microscope, the center of the microscope viewing area in the DFT experiment was at the center of the hydrophobic glass cover slip ±0.5 mm.

In the DFT, a hydrophobic glass cover slip that contained particles collected with the MOUDI was placed on the base of the flow cell, the rest of the components of the flow cell were then assembled, and a video recording of the particles was initiated (Fig. 2a). The center of the flow cell was then aligned with the optical axis of the microscope. Next, the temperature of the flow cell was decreased to 0 °C, and a humidified gas flow with a dew point of approximately 3 °C was passed over the hydrophobic glass cover slip to condense water onto the collected particles and grow droplets (Fig. 2b). After reaching a size of approximately 140 µm, the relative humidity (RH) was lowered to partially evaporate the droplets and increase the spacing between adjacent droplets (Fig. 2c). The reason for increasing the spacing between droplets is discussed in Sect. 2.3. Upon reaching the desired droplet size, the cell was isolated by closing valves upstream and downstream of the cell. The cell temperature was then lowered at a constant rate of −10 °C min<sup>−1</sup> to a temperature of −40 °C. During the condensation, evaporation, and cooling processes, a digital video was continuously recorded. The freezing of each droplet was manually identified by an increase in the droplet's opacity in the digital video (Fig. 2d), and its corresponding freezing temperature was retrieved using the video time stamp.

As there is a stochastic component to immersion freezing (Vali and Stansbury, 1966), the cooling rate used may influence the measured number of ice-active particles at a given temperature. In the DFT, the sample is cooled at a relatively fast rate of −10 °C min<sup>−1</sup> vs. the −1 °C min<sup>−1</sup> or slower rate often used in droplet freezing assays. An increase in the cooling rate by an order of magnitude can shift the median freezing temperature of a sample to colder temperatures by approximately 0.5–2 °C (Murray et al., 2011; Welti et al., 2012; Wright and Petters, 2013; Wright et al., 2013; Wheeler et al., 2015). While this influence has not been explicitly considered when interpreting the results, it is not expected to alter the conclusions of the intercomparison.

### 2.3 Calculating INP concentrations

The number of INPs active at a given temperature, #INPs(*T*), in each freezing experiment was determined using the fol-



**Figure 2.** Images recorded during a freezing experiment: (a) collected particles sitting on the hydrophobic glass cover slip at room temperature; (b) droplets after the condensation of water at 0 °C; (c) droplets after partial evaporation to reduce their size; and (d) frozen droplets after the cell temperature was reduced to −40 °C over a period of 4 min.

lowing equation based on the method of Vali (1971):

$$\#INPs(T) = -\ln\left(\frac{N_u(T)}{N_o}\right) N_o f_{nu,0.25-0.10\text{ mm}} f_{ne}, \quad (1)$$

where  $N_u(T)$  is the number of unfrozen droplets at temperature  $T$ ,  $N_o$  is the total number of droplets,  $f_{nu,0.25-0.10\text{ mm}}$  is a non-uniformity factor which corrects for aerosol deposit inhomogeneity at a scale of 0.25–0.10 mm (see Sect. 3.4 for details), and  $f_{ne}$  is a correction factor to account for uncertainty associated with the number of nucleation events in each experiment where fewer frozen droplets result in a greater experimental uncertainty. Equation (1) takes into account the possibility of multiple INPs being contained in a single droplet (Vali, 1971).

The atmospheric concentration of INPs, [INPs(*T*)], was then found using the following equation:

$$[INPs(T)] = \#INPs(T) \left(\frac{A_{\text{deposit}}}{A_{\text{DFT}} V}\right) f_{nu,1\text{ mm}}, \quad (2)$$

where  $A_{\text{deposit}}$  is the total area of the aerosol deposit on the hydrophobic glass cover slip,  $A_{\text{DFT}}$  is the area of the hydrophobic glass cover slip analyzed in the DFT experiments,  $V$  is the total volume of air sampled, and  $f_{nu,1\text{ mm}}$  is a non-uniformity factor which corrects for aerosol deposit inhomogeneity at the 1 mm scale (see Sect. 3.3 for more details). Values of the non-uniformity correction factors  $f_{nu,0.25-0.10\text{ mm}}$  and  $f_{nu,1\text{ mm}}$  were based on the non-uniformity of particle concentrations on the hydrophobic glass cover slips, and  $f_{ne}$  was calculated following the error analysis of Koop et al. (1997) at the 95 % confidence level.

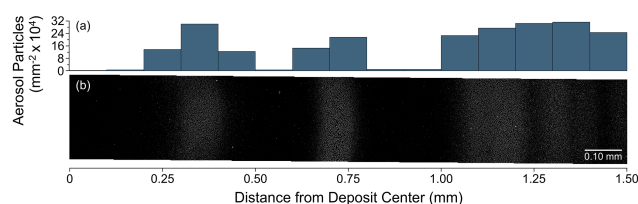
During an ice nucleation experiment, after a droplet froze it could grow by vapor diffusion at the expense of surrounding liquid droplets because of the lower saturation vapor pressure over ice compared to liquid water. If given sufficient time, the growing ice crystal can come into contact with a neighboring liquid droplet, causing it to freeze. Alternatively, a neighboring liquid droplet may completely evaporate since it can lose water to the growing ice crystal. These two processes were accounted for during data analysis by (i) calculating an upper limit to the concentration of INPs active in the immersion mode as a function of temperature by assuming that all droplets which underwent the processes discussed above froze by immersion freezing, and by (ii) calculating a lower limit to the INP concentration by assuming that all droplets which underwent the processes discussed above remained liquid until the homogeneous freezing temperature of approximately  $-37^{\circ}\text{C}$  (Wheeler et al., 2015). To minimize the occurrence of these contact and evaporation events in the DFT, which can introduce large uncertainties to the INP concentration, the spacing between droplets was increased by partial evaporation and a rapid cooling rate of  $-10^{\circ}\text{C min}^{-1}$  was used (Sect. 2.2).

#### 2.4 Measurements of MOUDI aerosol deposit non-uniformity

For measurements of non-uniformity of the MOUDI aerosol deposits, particle collection was done at Amphitrite Point near Ucluelet, British Columbia, Canada ( $48.92^{\circ}\text{N}$ ,  $125.54^{\circ}\text{W}$ , approximately 20 m a.s.l.) during August of 2013 as part of the larger NETCARE (NETwork on Climate and Aerosols: Addressing key uncertainties in Remote Canadian Environments) project. Environment Canada, the British Columbia Ministry of Environment, and Metro Vancouver operate this site for the continuous monitoring of aerosols and trace gases. Four MOUDI samples were collected through a louvered TSP inlet (Mesa Labs Inc., Butler, NJ, USA) and mast extending 5.5 m a.g.l.

In the laboratory, the hydrophobic glass cover slips were mounted on an optical microscope with an XY translational stage (Zeiss LSM). Images were recorded with one of three objective lenses depending on the MOUDI stage: an EC Plan-Neofluar  $20\times$  for stages 2–4 (particle sizes of 1.0–1.8  $\mu\text{m}$ ); an LD Plan-Neofluar  $40\times$  for stages 5–6 (particle sizes of 1.8–0.56  $\mu\text{m}$ ); and an EC Plan-Neofluar  $63\times$  for stages 7–8 (particle sizes of 0.56–0.18  $\mu\text{m}$ ). Aerosol deposit non-uniformity was not measured for the inlet or stages 1, 9, and 10 as the inlet and stage 1 contained insufficient particles for quantitative analysis, and individual particles could not be identified with the threshold method in stages 9 and 10.

Once the hydrophobic glass cover slips were mounted on the optical microscope, images were taken along a line passing through the center of the MOUDI aerosol deposit. These images were recorded in steps, with the dimensions of the



**Figure 3.** (a) The concentration of aerosol particles on MOUDI stage 8 as a function of distance from the center of the aerosol deposit, measured at a spatial resolution of 0.10 mm. (b) A subsection of the continuous cross section of the aerosol deposit of MOUDI stage 8. The images have been background-corrected by subtracting the sample image from a particle-free image. Background correction was done to remove spots on the image from dust on the optics. When overlapping individual images to produce the continuous image, the individual images do not align perfectly in the vertical dimension because moving the hydrophobic glass cover slip in the  $x$  direction using the XY translational stage of the microscope caused slight movement in the  $y$  direction

steps dependent on the magnification used to record the images. The dimensions ( $x$  length by  $y$  length) of these steps were  $520\ \mu\text{m} \times 690\ \mu\text{m}$  for stages 2–4,  $260\ \mu\text{m} \times 340\ \mu\text{m}$  for stages 5–6, and  $170\ \mu\text{m} \times 230\ \mu\text{m}$  for stages 7–8. Images were recorded in such a manner that they could be superimposed to produce continuous images of the particle concentration across the MOUDI aerosol deposits. Shown in Fig. 3 is part of the aerosol deposit of stage 8 as an example of a subsection of a continuous image, where lighter regions show zones where more particle deposition occurred.

Using the continuous images, particle concentrations as a function of distance from the center of the MOUDI aerosol deposit were determined with the threshold function of the image processing software ImageJ (Rasband, 2014). Concentrations were found using step sizes of 1 and 0.25 mm for all stages analyzed. A spatial resolution of 1 mm was used since this is roughly equal to the dimensions of the area analyzed in DFT experiments, and a spatial resolution of 0.25 mm was used to determine if there is non-uniformity at a spatial resolution smaller than the area analyzed in the DFT. The normalized particle concentration, which is the quotient of the particle concentration of a given step divided by the maximum particle concentration, was calculated as a function of distance from the center of the MOUDI aerosol deposit for each hydrophobic glass cover slip at spatial resolutions of 1 and 0.25 mm. Visual inspection of aerosol deposits showed that there was spatial variability of the particle concentrations at a spatial resolution as low as 0.10 mm for MOUDI stages 6–8, so these stages were also analyzed at this spatial resolution. A total of three hydrophobic glass cover slips were analyzed for stages 2 and 8, and four hydrophobic glass cover slips were analyzed for stages 3–7.

## 2.5 Substrate holders for individual MOUDI stages

For each MOUDI stage a substrate holder was constructed to position the hydrophobic glass cover slip in a unique and reproducible position on the MOUDI impaction plate. The location of the hydrophobic glass cover slip was chosen based on the non-uniformity results such that the region analyzed in the droplet freezing experiment had minimal variation in the particle concentration at the 0.25 mm spatial resolution. Substrate holders were constructed out of 6061-T561, an aluminum alloy, and had a thickness of 0.41 mm.

## 2.6 Comparison of MOUDI-DFT and CFDC measurements

For method validation we compared INP concentrations found using the MOUDI-DFT with INP concentrations found using the CFDC operated by CSU during a measurement campaign at CSU. Detailed descriptions of the CFDC design and operation can be found in Rogers (1988), Rogers et al. (2001), and Eidhammer et al. (2010). Briefly, air sampled by the instrument was first dried and passed through a two-stage impactor to remove large particles. For the experiments described here a two-stage impactor with a 50 % cut-off aerodynamic diameter of 2.4  $\mu\text{m}$  (the same for each stage) was used. After the two-stage impactor the sampled air entered an annular chamber where the particles were exposed to a specific temperature and supersaturation with respect to water ( $SS_w$ ). Under the conditions used, any ice will quickly grow to sizes between 3 and 10  $\mu\text{m}$ . The sample then entered a region of reduced relative humidity to evaporate any liquid droplets that formed but did not contain an INP. At the chamber outlet, ice was discriminated from other particles using an optical particle counter where particles exceeding 3  $\mu\text{m}$  in size were classified as ice.

The measurements for intercomparison involved sampling ambient aerosols at the Department of Atmospheric Science's Atmospheric Chemistry building of CSU in Fort Collins, Colorado, USA (40.59° N, 105.14° W) over 3 days in November 2013. The MOUDI was located directly outside the building, while the CFDC was located in an adjacent laboratory (approximately 5 m away) with ambient air drawn through conductive rubber tubing (Simolex, Plymouth, MI, USA). The MOUDI and CFDC were operated simultaneously to ensure any variations in INP concentrations would be captured by both techniques. The CFDC temperature and  $SS_w$  were kept constant throughout the sampling period to obtain an average INP concentration for later comparison to the INP concentration obtained offline by the MOUDI-DFT.

Two sampling periods from the CSU campaign were chosen for comparison purposes (Table 1). An additional sampling period was carried out during this campaign, but it was not included because of poor temperature overlap between the CFDC and the DFT. In sample CSU-1 the average CFDC temperature and  $SS_w$  with an uncertainty of 1 standard deviation

(SD) were  $-21.7 \pm 0.3$  °C and  $5.5 \pm 0.6$  %, respectively, while in CSU-2 the CFDC conditions were  $-26.6 \pm 0.2$  °C and  $5.8 \pm 0.6$  %  $SS_w$ . MOUDI samples were collected for stages 2–8 (particle sizes of 10–0.18  $\mu\text{m}$ ), stored at 4 °C, and analyzed using the DFT within 2 weeks of collection. INP concentrations were not found for samples collected on the inlet and stages 1, 9, and 10 of the MOUDI as we were unable to measure aerosol deposit non-uniformity for these stages (see Sect. 2.4).

DeMott et al. (2015) found that CFDC measurements of natural mineral dust where particles were exposed to an  $SS_w$  of approximately 5 %, as was used in this study, resulted in an under-prediction of INP concentrations by a factor of 3 when compared to the use of a higher  $SS_w$  (approximately 9 %). It was therefore suggested that a correction factor of 3 be applied to INP concentrations of mineral dust samples determined by the CFDC when using an  $SS_w$  of 5 %. More work is needed to determine if INP concentrations are similarly underestimated in general ambient aerosol samples such as those of this study, but the potential impact of this factor of 3 on the intercomparison results is discussed in Sect. 3.5.

As mentioned above, the CFDC used here measures INP concentrations for particle sizes  $\leq 2.4$   $\mu\text{m}$ . When comparing the MOUDI-DFT and CFDC results, we included only MOUDI stages 4–8, covering a size range of 3.2–0.18  $\mu\text{m}$ . In addition, the INP concentrations measured in stage 4 (particle sizes of 1.8–3.2  $\mu\text{m}$ ) were multiplied by a factor of 3/7, the fraction of the particle size range of stage 4 which overlaps with the size range measured by the CFDC, to ensure the size range covered by the MOUDI-DFT was as close as possible to the size range covered by the CFDC. In all cases the CFDC measured smaller particles than the MOUDI-DFT, which could result in differences between the two instruments.

## 3 Results and discussion

### 3.1 MOUDI aerosol deposit non-uniformity and size

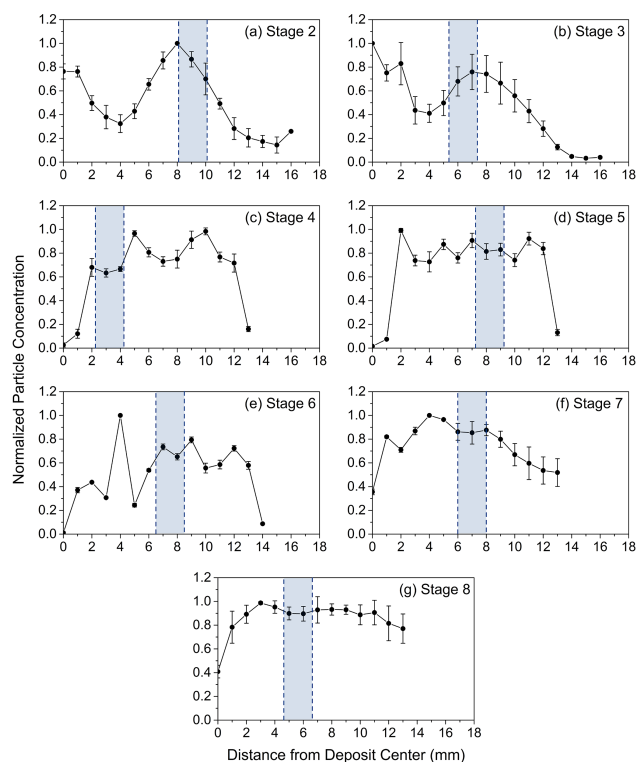
Shown in Figs. 4, 5, and 6 are the normalized concentrations of aerosol particles as a function of distance from the center of the MOUDI aerosol deposit for spatial resolutions of 1, 0.25, and 0.10 mm, respectively, when averaged over all analyzed samples. The uncertainty in Figs. 4–6 is the standard deviation of these samples. Particle concentrations have been normalized to the maximum particle concentration measured at the stated spatial resolution. Particle concentrations at a spatial resolution of 0.10 mm are shown only for stages 6–8 and only for the region of the aerosol deposit that corresponds to the region analyzed in the DFT experiments when using substrate holders in the MOUDI. Figures 4 and 5 illustrate that the particle concentration can vary by more than 2 orders of magnitude across the aerosol deposit. In comparison, the particle concentration measured in the PIXE analy-



**Table 1.** CSU sampling conditions.

Sample ID	Sample composition	MOUDI sampling (min)	MOUDI size range ( $\mu\text{m}$ )	Number of CFDC measurements	Mean CFDC temperature ( $^{\circ}\text{C}$ )	Mean CFDC $\text{SS}_w^*$ (%)	Temporal overlap (%)
CSU-1	Ambient aerosols	410	0.18–10	66	$-21.7 \pm 0.3$	$5.5 \pm 0.6$	90
CSU-2	Ambient aerosols	256	0.18–10	52	$-26.6 \pm 0.2$	$5.8 \pm 0.6$	98

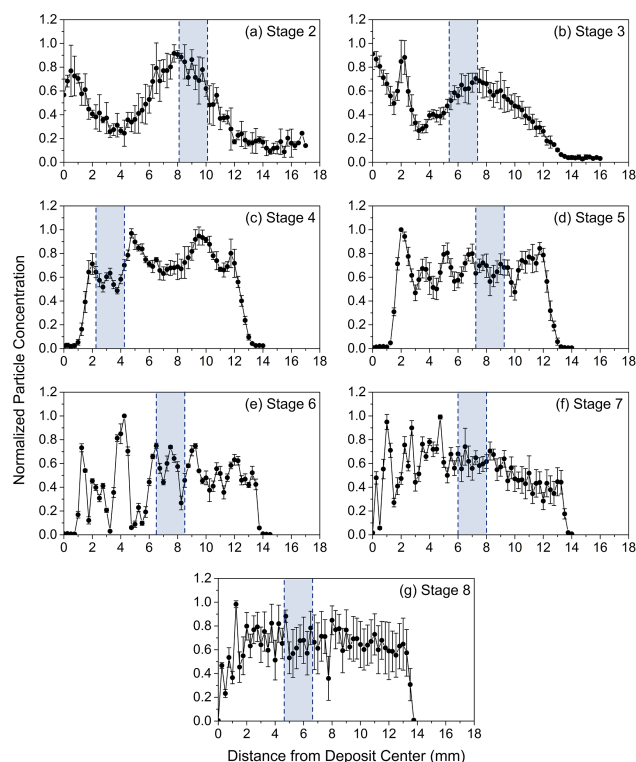
\*  $\text{SS}_w$ : supersaturation with respect to water in the sample region of the CFDC.



**Figure 4.** The deposit profiles for MOUDI stages 2–8 found at a spatial resolution of 1 mm. The normalized particle concentration is the quotient of the particle concentration of a given step divided by the maximum particle concentration. The experimental uncertainty is the standard deviation, and the shaded area is the region of the aerosol deposit in the microscope viewing area of the DFT using the substrate offset given in Table 2 with an uncertainty of  $\pm 0.5$  mm.

sis of Maenhaut et al. (1993) varied by less than an order of magnitude.

To calculate atmospheric concentrations of INPs using Eq. (2), the total area of the MOUDI aerosol deposit is needed. In their instrument paper describing the MOUDI, Marple et al. (1991) state that a surface with a diameter of 27 mm is required for sample collection in stages 2–8, but no other details were provided and some deposits were found to be larger than 27 mm in this study. Aerosol deposit sizes were reported in Maenhaut et al. (1993), but the criteria used to define the deposit edge were not given. Here, the area of each aerosol deposit was determined using the normalized particle concentrations of Fig. 5, where the edge of the de-



**Figure 5.** The same as Fig. 4 but at a spatial resolution of 0.25 mm. The shaded area is the region of the aerosol deposit in the microscope viewing area of the DFT using the substrate offset given in Table 2 with an uncertainty of  $\pm 0.5$  mm.

posit was defined as the point where the normalized particle concentration transitioned from above to below the detection limit of the technique (the average plus 3 SDs of the normalized particle concentration in non-deposit regions of the hydrophobic glass cover slip). Aerosol deposit diameters and areas are reported in Table 2.

### 3.2 Substrate holder design

As the concentration profiles found using the microscope analysis revealed that MOUDI deposits can be highly non-uniform, substrate holders were designed to position the hydrophobic glass cover slips at specific places on the MOUDI impaction plates. Details of the dimensions of the substrate holders are given in Fig. 7. Each holder has the same diameter, height, and thickness to fit securely onto the im-

**Table 2.** Deposit diameters and areas, hydrophobic glass cover slip offsets, and non-uniformity correction factors  $f_{\text{nu},1\text{mm}}$  and  $f_{\text{nu},0.25-0.10\text{mm}}$  for MOUDI stages 2–8 when using substrate holders. The uncertainty in  $f_{\text{nu},1\text{mm}}$  is given as the standard deviation.

MOUDI stage	Deposit diameter (mm)	Deposit area (mm <sup>2</sup> )	Hydrophobic glass cover slip offset (mm)	$f_{\text{nu},1\text{mm}}$ with uncertainty	$f_{\text{nu},0.25-0.10\text{mm}}$
2	23.25	424.6	9.13 ± 0.50	0.74, +0.18, −0.12	0.1225 exp(−11.29 μ) + 1.065 exp(−0.06412 μ)
3	26.25	541.2	6.38 ± 0.50	0.72, +0.08, −0.08	0.04718 exp(−14.15 μ) + 1.023 exp(−0.02347 μ)
4	26.25	541.2	3.25 ± 0.50	1.18, +0.09, −0.14	0.04252 exp(−13.06 μ) + 1.024 exp(−0.02386 μ)
5	26.25	541.2	8.25 ± 0.50	0.97, +0.03, −0.10	0.03023 exp(−14.97 μ) + 1.015 exp(−0.01515 μ)
6	27.75	604.8	7.50 ± 0.50	0.75, +0.19, −0.02	0.5799 exp(−10.57 μ) + 1.148 exp(−0.1408 μ)
7	27.25	583.2	7.00 ± 0.50	0.84, +0.07, −0.11	0.1151 exp(−10.66 μ) + 1.072 exp(−0.07029 μ)
8	27.25	583.2	5.63 ± 0.50	1.01, +0.03, −0.12	1.03 exp(−12.79 μ) + 1.268 exp(−0.2422 μ)

$\mu = N_{\text{u}}(T) / N_0$ .  $N_{\text{u}}(T)$  is the number of unfrozen droplets at temperature  $T$  in the freezing experiment.  $N_0$  is the total number of droplets in the freezing experiment.

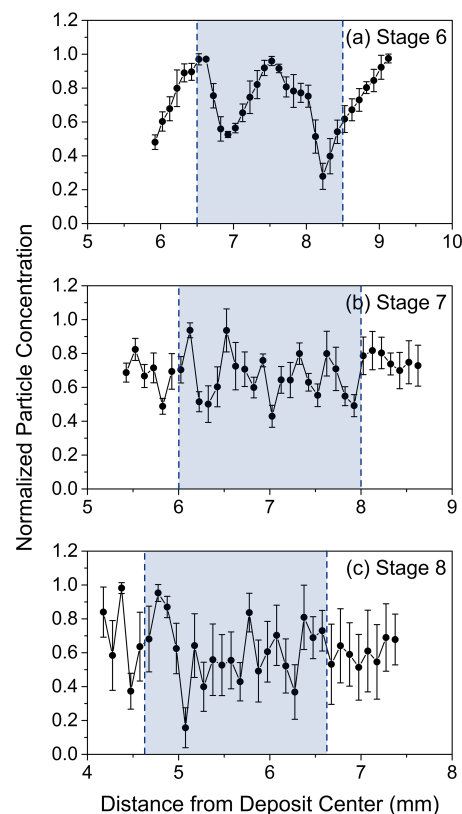
paction plate of the MOUDI. In addition, each holder had a square piece of the material of the same dimensions as the hydrophobic glass cover slip removed. When the substrate holder was secured onto the impaction plate, this region of removed material created a square well where the hydrophobic glass cover slip could be precisely located (see Fig. 7c). The dimensions of the substrate holder were chosen such that the aerosol deposit at the center of the hydrophobic glass cover slip (once the cover slip was located in the substrate holder) had a relatively small variation in particle concentrations at the 0.25 and 0.10 mm spatial resolution. The distances from the center of the hydrophobic glass cover slip to the center of the substrate holder when the hydrophobic glass cover slip is located in the holder, termed the offset, are listed for MOUDI stages 2–8 in Table 2 and are also represented by the shaded regions in Figs. 4–6.

### 3.3 Correction for aerosol deposit non-uniformity at a spatial resolution of 1 mm

Figure 4 shows that the particle concentrations across the MOUDI aerosol deposits can vary by more than an order of magnitude at a spatial resolution of 1 mm. This variation in particle concentration at the 1 mm scale is taken into account when calculating INP concentrations using the non-uniformity correction factor  $f_{\text{nu},1\text{mm}}$ , which was determined using the following equation:

$$f_{\text{nu},1\text{mm}} = \frac{\text{average particle concentration over the entire aerosol deposit}}{\text{average particle concentration in the microscope viewing area}} \quad (3)$$

Since the substrate holders position the hydrophobic glass cover slips in a known and repeatable position, and the region of the sample analyzed by the DFT is always within 0.5 mm of the center of the hydrophobic glass cover slip due to the design of the flow cell shown in Fig. 1, the correction factor in this case always remains the same for each MOUDI stage. The  $f_{\text{nu},1\text{mm}}$  correction factors that are applicable when using the substrate holders mentioned above are listed in Table 2. The stated uncertainty in  $f_{\text{nu},1\text{mm}}$  is due to the uncertainty in the location of the hydrophobic glass cover

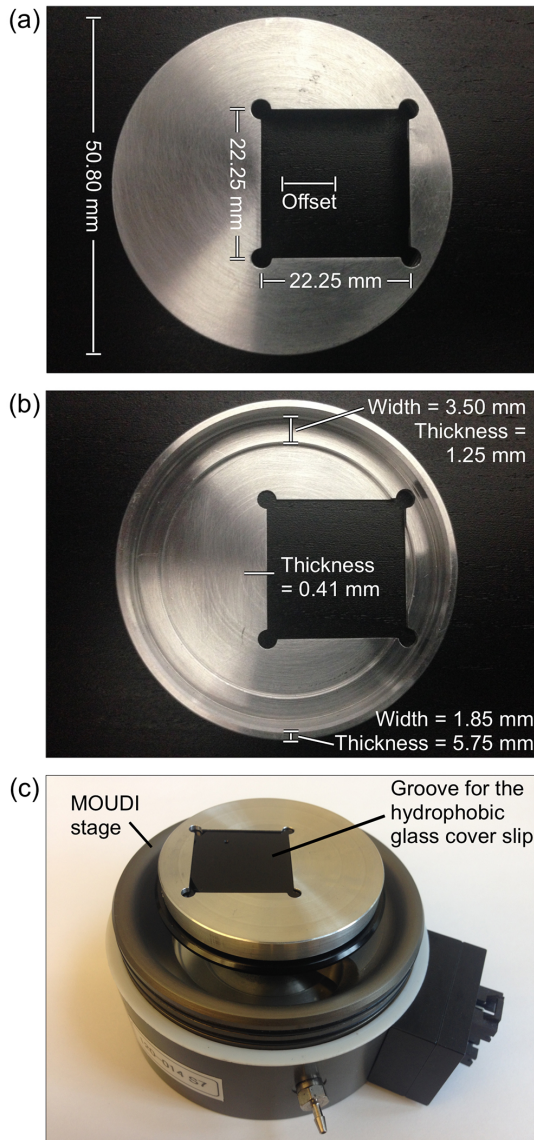


**Figure 6.** The same as Fig. 4 but at a spatial resolution of 0.10 mm. The shaded area is the region of the aerosol deposit in the microscope viewing area of the DFT using the substrate offset given in Table 2 with an uncertainty of ± 0.5 mm.

slip in both the DFT experiments and sample collection with the MOUDI, and the uncertainties in the normalized particle concentrations shown in Figs. 4 and 5.

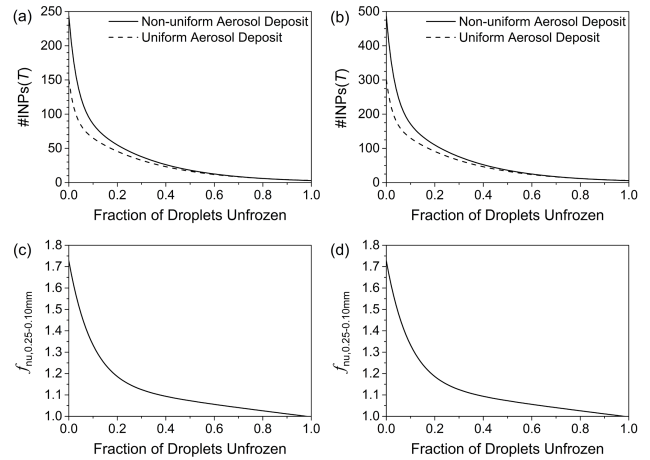
### 3.4 Correction for aerosol deposit non-uniformity at a spatial resolution of 0.25 and 0.10 mm

The second correction factor needed when calculating INP concentrations is  $f_{\text{nu},0.25-0.10\text{mm}}$ , which corrects for aerosol



**Figure 7.** General substrate holder design specifications for positioning the hydrophobic glass cover slips in the MOUDI: (a) top-down view of the substrate holder; (b) bottom view; (c) the substrate holder positioned onto the impaction plate of the MOUDI stage.

deposit non-uniformity at the 0.25 and 0.10 mm scale. Equation (1) with  $f_{\text{nu},0.25-0.10\text{mm}} = 1$  assumes that the particles are deposited uniformly in the area analyzed in the DFT experiments, and the distribution of INPs within the droplets can be described using Poisson statistics. Shown in Fig. 8 is the relationship between the  $\#\text{INPs}(T)$  and the fraction of droplets unfrozen in the DFT experiment ( $N_u(T)/N_o$ ) if these conditions hold (i.e., particles are deposited uniformly in the area analyzed in the DFT experiments and INPs within the droplets can be described using Poisson statistics). The range in droplet number used in Fig. 8, 28 to 56, covers 1 SD from the average number of droplets in a DFT experiment.



**Figure 8.** The influence of aerosol deposit non-uniformity on the calculated number of INPs in MOUDI stage 6. (a) and (b) are the  $\#\text{INPs}(T)$  calculated for a non-uniform deposit (solid line) and assuming a uniform aerosol deposit (dashed line). The calculations were carried out for (a) 28 uniformly distributed droplets and (b) 56 uniformly distributed droplets. (c) and (d) show  $f_{\text{nu},0.25-0.10\text{mm}}$ , calculated by taking the ratio of the solid line to the dashed line in (a) and (b), respectively.

Figures 5 and 6 show that in experiments using MOUDI samples the particles are not always uniformly deposited in the viewing area of the DFT, even when substrate holders are used. For example, Fig. 6a illustrates that for stage 6 the particle concentration can vary by a factor of 3.4 in the microscope viewing area of the DFT.

To quantify the effect of non-uniformity within the area analyzed by the DFT, we first calculated the relationship between  $\#\text{INPs}(T)$  and  $N_u(T)/N_o$  using the measured aerosol deposit non-uniformity within the microscope viewing area for each stage when using the substrate holders. For stages 2–5 we considered the non-uniformity at a spatial resolution of 0.25 mm and for stages 6–8 we considered non-uniformity at a spatial resolution of 0.10 mm. A resolution of 0.10 mm was used for stages 6–8 as some aerosol deposit non-uniformity is not captured at a spatial resolution of 0.25 mm for these stages as discussed above. The following is an example of how we calculated the relationship between  $\#\text{INPs}(T)$  and  $N_u(T)/N_o$  for the case of non-uniform aerosol deposits. For stages 2–5 we assumed that the microscope viewing area was divided into 4 equal sections with a width of 0.25 mm (consistent with the spatial resolution of non-uniformity measurements in Fig. 5) and a height of 1.3 mm. These sections are labeled 1–4. We also assumed that the droplets were uniformly distributed over the viewing area and the number of INPs in each 0.25 mm wide section was  $\#\text{INPs}(T)\delta_i/4$ , where  $\delta_i$  was given by the following equation:

$$\delta_i = \frac{\text{average particle concentration in the 0.25 mm wide section } i}{\text{average particle concentration in the microscope viewing area}}, \quad (4)$$

with  $i$  varying from 1 to 4. To get the relationship between  $\#INPs(T)$  and  $N_u(T)/N_o$  for the entire microscope viewing area, we applied the following equation to each section of the slide to calculate the fraction of droplets unfrozen for each section:

$$\left(\frac{N_u(T)}{N_o}\right)_i = \exp\left(\frac{-\#INPs\delta_i}{N_o}\right), \quad (5)$$

again with  $i$  varying from 1 to 4. Equation (5) is based on Eq. (1) but with  $f_{\text{nu},0.25-0.10\text{mm}}$  set to 1.  $(N_u(T)/N_o)_i$  from each section was then used to calculate  $N_u(T)/N_o$  for the entire microscope viewing area. To determine the relationship between  $\#INPs(T)$  and  $N_u(T)/N_o$  for stages 6–8, we applied a similar procedure as described above for stages 2–5, but the microscope viewing area was divided into 10 equal sections with a width of 0.10 mm and the non-uniformity measurements shown in Fig. 6 were used to determine  $\delta_i$ . The number of sections used to divide the microscope viewing area was selected for each MOUDI stage such that the section width was smaller than or equal to the spatial scale of non-uniformity. If fewer (i.e., wider) sections are used, non-uniformity is not sufficiently captured and  $f_{\text{nu},0.25-0.10\text{mm}}$  is underestimated. However, using more (i.e., narrower) sections does not change  $f_{\text{nu},0.25-0.10\text{mm}}$ .

The results of these calculations for MOUDI stage 6 for different values of  $\#INPs(T)$  are shown Fig. 8a and b. Figure 8 shows that, if  $f_{\text{nu},0.25-0.10\text{mm}}$  is not applied when calculating  $\#INPs(T)$ , the  $\#INPs(T)$  will be under-predicted, and this under-prediction increases in magnitude as  $N_u(T)/N_o$  decreases.

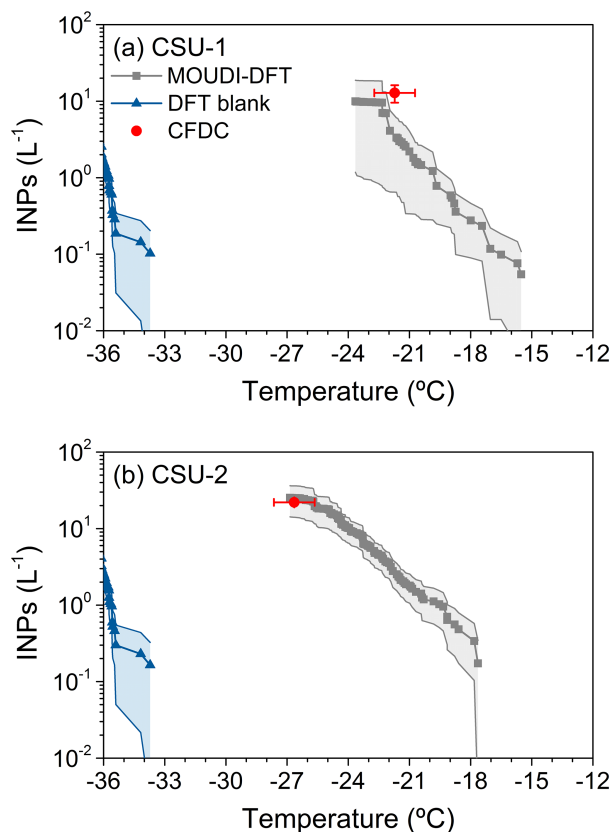
To calculate the correction factor  $f_{\text{nu},0.25-0.10\text{mm}}$  for use in Eq. (1), the relationship between  $\#INPs(T)$  and  $N_u(T)/N_o$  determined for a non-uniform sample was divided by the relationship between  $\#INPs(T)$  and  $N_u(T)/N_o$  determined under the assumption of a uniform aerosol deposit. For example, for stage 6 this involved dividing the solid lines of Fig. 8a and b by the dashed lines. These corrections for stage 6 are plotted in Fig. 8c and d for 28 and 56 droplets in the microscope viewing area, respectively. These panels illustrate that the correction factors are a function of  $N_u(T)/N_o$  but are independent of the number of droplets used in the calculation. The above procedure together with the non-uniformity information shown in Figs. 5 and 6 were used to determine the correction factors for the different substrate holders. The  $f_{\text{nu},0.25-0.10\text{mm}}$  correction factor for each substrate holder is given in Table 2.

### 3.5 MOUDI-DFT and CFDC intercomparison

INP concentrations found using the MOUDI-DFT were compared with those detected in real-time by the CFDC during the CSU measurement campaign. INP concentrations found by the two instruments are shown in Fig. 9. Also included in Fig. 9 are the INP concentrations determined using blank hydrophobic glass cover slips. In this case, new hydrophobic glass cover slips were processed the same way as samples collected during CSU measurements except they were not exposed to atmospheric particles. The blanks illustrate that heterogeneous ice nucleation by the hydrophobic glass cover slip was not observed above  $-33.7^\circ\text{C}$  and therefore did not contribute to the measured INP concentrations in CSU samples.

Figure 9 shows that during CSU-1 the average value of the INP concentration obtained by the CFDC was a factor of approximately 3.8 larger than the median value determined with the MOUDI-DFT at a temperature of  $-21.7^\circ\text{C}$ . However, the two values are not in disagreement if the uncertainties in the measurements are considered. During CSU-2, the median INP concentration of the MOUDI-DFT was a factor of approximately 1.1 larger than the average value from the CFDC at a temperature of  $-26.6^\circ\text{C}$ . Again, the two measurements are not in disagreement if the uncertainties in the measurements are considered. If we applied a correction factor of 3 to the CFDC data due to this technique underestimating the INP concentration (DeMott et al., 2015), a possibility noted in Sect. 2.6 although not established for our sampling conditions, then the average INP concentration found by the CFDC would be greater than that of the MOUDI-DFT by a factor of 11.5 in sample CSU-1 and 2.6 in sample CSU-2.

The agreement observed between the MOUDI-DFT and CFDC is comparable to results of previous intercomparison studies of INP instrumentation. For example, during the 2007 International Workshop on Comparing Ice Nucleation Measuring Systems (ICIS-2007) in Germany (DeMott et al., 2008; Möhler et al., 2008), instruments encompassing continuous flow diffusion chambers (e.g., the CFDC of CSU), static diffusion chambers, mixing chambers, and expansion chambers were used to investigate different particle types including mineral dust and bacteria (Snomax<sup>®</sup>, hereafter Snomax). In general, the fraction of aerosols serving as INPs as a function of temperature and RH between all instruments agreed within a factor of 4–5 (DeMott et al., 2008, 2011, 2015; Jones et al., 2011). Similar differences were observed between the Aerosol Interactions and Dynamics in the Atmosphere (AIDA) cloud expansion chamber (Möhler et al., 2006) and the CFDC of CSU during the Third Aerosol-Cloud Interaction (ACI03) campaign with samples of ambient aerosols and coated and uncoated Asian dust (DeMott et al., 2015). Additional intercomparison studies by Hiranuma et al. (2015) using the mineral dust illite NX and Wex et al. (2015) using Snomax found that instruments measuring



**Figure 9.** Comparison of INP concentrations found by the MOUDI-DFT and the CFDC under concurrent sampling. The grey shaded region marks the upper and lower bounds to the INP concentration in MOUDI-DFT measurements as defined by our experimental uncertainty, with points showing median values. The uncertainty in temperature for MOUDI-DFT measurements is not shown but is  $\pm 0.3^\circ\text{C}$ . The blue shaded region shows the upper and lower bounds to the INP concentrations found in five blank DFT experiments (hydrophobic glass cover slips without atmospheric particles), with points showing median values. Average CFDC values are in red, with uncertainties in the vertical dimension shown as the 95 % confidence interval and in the horizontal dimension as the temperature uncertainty of  $\pm 1^\circ\text{C}$ .

INP concentrations could disagree by more than an order of magnitude.

#### 4 Summary

The MOUDI-DFT is a recent approach to measuring concentrations of INPs as a function of size in the atmosphere. Here we have improved on the technique as presented in Huffman et al. (2013). First, the non-uniformity of the MOUDI aerosol deposits has been characterized for stages 2–8 using optical microscopy. The results show that the particle concentrations can vary by more than 2 orders of magnitude across the aerosol deposit. In comparison, the particle con-

centrations measured in the PIXE analysis of Maenhaut et al. (1993) varied by less than an order of magnitude due to the lower spatial resolution used in their experiments. Second, using these non-uniformity measurements, we designed substrate holders to position the hydrophobic glass cover slips in a known and reproducible position in the MOUDI that has a relatively uniform concentration profile. Lastly, using the non-uniformity results, correction factors were calculated to improve the accuracy of INP concentrations found using the MOUDI-DFT.

An intercomparison between the MOUDI-DFT and the CFDC was conducted using samples from a campaign measuring ambient continental aerosols. Results from this study indicate a reasonable agreement between the two techniques for the limited conditions examined thus far, as INP concentrations agreed within experimental uncertainty in both of the samples investigated. The agreement observed here is similar to or better than the agreement observed in other intercomparison studies of INP instrumentation. This reasonable agreement and consistency with a currently used method suggests that the MOUDI-DFT is a promising technique for measuring INP concentrations as a function of size in the atmosphere, although additional validation experiments are warranted. As different levels of agreement have been observed in past intercomparison studies depending on aerosol type (Hiranuma et al., 2015; Wex et al., 2015), additional intercomparison studies are needed with different aerosol types.

*Acknowledgements.* The authors thank U. Pöschl for support during some of the initial MOUDI-DFT INP measurements, K. Bach for the construction of the MOUDI substrate holders, S. Kamal for guidance in optical microscopy, and C. Fandrey and F. Romay of MSP Corp. for helpful discussions regarding MOUDI operation and design. The sampling site at Amphitrite Point is jointly supported and maintained by Environment Canada, the British Columbia Ministry of Environment, and Metro Vancouver, and as it is located at a Coast Guard station we would like to thank the Department of Fisheries and Oceans and all the staff at the site for their help. The Natural Sciences and Engineering Research Council of Canada supported this research. CSU participation in these studies was funded by the US National Science Foundation under grants AGS-1036028 and AGS-1358495.

Edited by: J. Schneider

#### References

- Berezinski, N. A., Stepanov, G. V., and Khorguani, V. G.: Ice-forming activity of atmospheric aerosol particles of different sizes, in: *Lecture Notes in Physics*, Vol. 309, edited by: Wagner, P. E. and Vali, G., 709–712, Springer, Heidelberg and Berlin, Germany, 1988.
- Chen, Y., Kreidenweis, S. M., McInnes, L. M., Rogers, D. C., and DeMott, P. J.: Single particle analyses of ice nucleating aerosols

- in the upper troposphere and lower stratosphere, *Geophys. Res. Lett.*, 25, 1391–1394, doi:10.1029/97GL03261, 1998.
- Chernoff, D. I. and Bertram, A. K.: Effects of sulfate coatings on the ice nucleation properties of a biological ice nucleus and several types of minerals, *J. Geophys. Res.*, 115, D20205, doi:10.1029/2010JD014254, 2010.
- Chow, J. C. and Watson, J. G.: Review of measurement methods and compositions for ultrafine particles, *Aerosol Air Qual. Res.*, 7, 121–173, doi:10.4209/aaqr.2007.05.0029, 2007.
- Costa, T. S., Gonçalves, F. L. T., Yamasoe, M. A., Martins, J. A., and Morris, C. E.: Bacterial ice nuclei impact cloud lifetime and radiative properties and reduce atmospheric heat loss in the BRAMS simulation model, *Environ. Res. Lett.*, 9, 084020, doi:10.1088/1748-9326/9/8/084020, 2014.
- Cziczo, D. J., Murphy, D. M., Hudson, P. K., and Thomson, D. S.: Single particle measurements of the chemical composition of cirrus ice residue during CRYSTAL-FACE, *J. Geophys. Res.*, 109, D04201, doi:10.1029/2003JD004032, 2004.
- DeMott, P. J., Cziczo, D. J., Prenni, A. J., Murphy, D. M., Kreidenweis, S. M., Thomson, D. S., Borys, R., and Rogers, D. C.: Measurements of the concentration and composition of nuclei for cirrus formation, *P. Natl. Acad. Sci. USA*, 100, 14655–14660, doi:10.1073/pnas.2532677100, 2003.
- DeMott, P. J., Möhler, O. P., Stetzer, O., Murakami, M., Bundke, U., Kanji, Z., Cotton, R., Jones, H., Leisner, T., Klein, H., Cziczo, D., Petters, M. D., Prenni, A. J., Abbatt, J. P. D., Saito, A., Ardon, K., Levin, Z., Heinz, B., Sierau, B., Nicolet, M., Bowels, J., Gallavardin, S., Targino, A., Dorsey, J., Georgakopoulos, D., Rzesanke, D., Brinkmann, M., Schwartz, T., Benz, S., Wagner, R., Saathoff, H., Ebert, V., other AIDA team, and Vali, G.: The Fourth International Ice Nucleation Workshop (ICIS-2007): Objectives and Preliminary Results, *Proceedings of 15th ICCP, Cancun, Mexico*, 7–11 July, 2008.
- DeMott, P. J., Möhler, O., Stetzer, O., Vali, G., Levin, Z., Petters, M. D., Murakami, M., Leisner, T., Bundke, U., Klein, H., Kanji, Z. A., Cotton, R., Jones, H., Benz, S., Brinkmann, M., Rzesanke, D., Saathoff, H., Nicolet, M., Saito, A., Nillius, B., Bingemer, H., Abbatt, J., Ardon, K., Ganor, E., Georgakopoulos, D. G., and Saunders, C.: Resurgence in ice nuclei measurement research, *B. Am. Meteorol. Soc.*, 92, 1623–1635, doi:10.1175/2011BAMS3119.1, 2011.
- DeMott, P. J., Prenni, A. J., McMeeking, G. R., Sullivan, R. C., Petters, M. D., Tobo, Y., Niemand, M., Möhler, O., Snider, J. R., Wang, Z., and Kreidenweis, S. M.: Integrating laboratory and field data to quantify the immersion freezing ice nucleation activity of mineral dust particles, *Atmos. Chem. Phys.*, 15, 393–409, doi:10.5194/acp-15-393-2015, 2015.
- Després, V. R., Huffman, J. A., Burrows, S. M., Hoose, C., Safatov, A. S., Buryak, G., Fröhlich-Nowoisky, J., Elbert, W., Andreae, M. O., Pöschl, U., and Jaenicke, R.: Primary biological aerosol particles in the atmosphere: a review, *Tellus B*, 64, 15598, doi:10.3402/tellusb.v64i0.15598, 2012.
- Eidhammer, T., DeMott, P. J., Prenni, A. J., Petters, M. D., Twohy, C. H., Rogers, D. C., Stith, J., Heymsfield, A., Wang, Z., Pratt, K. A., Prather, K. A., Murphy, S. M., Seinfeld, J. H., Subramanian, R., and Kreidenweis, S. M.: Ice Initiation by Aerosol Particles: Measured and Predicted Ice Nuclei Concentrations versus Measured Ice Crystal Concentrations in an Orographic Wave Cloud, *J. Atmos. Sci.*, 67, 2417–2436, doi:10.1175/2010JAS3266.1, 2010.
- Garcia, E., Hill, T. C. J., Prenni, A. J., DeMott, P. J., Franc, G. D., and Kreidenweis, S. M.: Biogenic ice nuclei in boundary layer air over two U.S. High Plains agricultural regions, *J. Geophys. Res.*, 117, D18209, doi:10.1029/2012JD018343, 2012.
- Gettelman, A., Liu, X., Barahona, D., Lohmann, U., and Chen, C.: Climate impacts of ice nucleation, *J. Geophys. Res.*, 117, D20201, doi:10.1029/2012JD017950, 2012.
- Haga, D. I., Iannone, R., Wheeler, M. J., Mason, R., Polishchuk, E. A., Fetch Jr., T., van der Kamp, B. J., McKendry, I. G., and Bertram, A. K.: Ice nucleation properties of rust and bunt fungal spores and their transport to high altitudes, where they can cause heterogeneous freezing, *J. Geophys. Res.-Atmos.*, 118, 7260–7272, doi:10.1002/jgrd.50556, 2013.
- Haga, D. I., Burrows, S. M., Iannone, R., Wheeler, M. J., Mason, R. H., Chen, J., Polishchuk, E. A., Pöschl, U., and Bertram, A. K.: Ice nucleation by fungal spores from the classes *Agaricomycetes*, *Ustilaginomycetes*, and *Eurotiomycetes*, and the effect on the atmospheric transport of these spores, *Atmos. Chem. Phys.*, 14, 8611–8630, doi:10.5194/acp-14-8611-2014, 2014.
- Hiranuma, N., Augustin-Bauditz, S., Bingemer, H., Budke, C., Curtius, J., Danielczok, A., Diehl, K., Dreischmeier, K., Ebert, M., Frank, F., Hoffmann, N., Kandler, K., Kiselev, A., Koop, T., Leisner, T., Möhler, O., Nillius, B., Peckhaus, A., Rose, D., Weinbruch, S., Wex, H., Boose, Y., DeMott, P. J., Hader, J. D., Hill, T. C. J., Kanji, Z. A., Kulkarni, G., Levin, E. J. T., McCluskey, C. S., Murakami, M., Murray, B. J., Niedermeier, D., Petters, M. D., O’Sullivan, D., Saito, A., Schill, G. P., Tajiri, T., Tolbert, M. A., Welti, A., Whale, T. F., Wright, T. P., and Yamashita, K.: A comprehensive laboratory study on the immersion freezing behavior of illite NX particles: a comparison of 17 ice nucleation measurement techniques, *Atmos. Chem. Phys.*, 15, 2489–2518, doi:10.5194/acp-15-2489-2015, 2015.
- Hoose, C. and Möhler, O.: Heterogeneous ice nucleation on atmospheric aerosols: a review of results from laboratory experiments, *Atmos. Chem. Phys.*, 12, 9817–9854, doi:10.5194/acp-12-9817-2012, 2012.
- Huffman, J. A., Prenni, A. J., DeMott, P. J., Pöhlker, C., Mason, R. H., Robinson, N. H., Fröhlich-Nowoisky, J., Tobo, Y., Després, V. R., Garcia, E., Gochis, D. J., Harris, E., Müller-Germann, I., Ruzene, C., Schmer, B., Sinha, B., Day, D. A., Andreae, M. O., Jimenez, J. L., Gallagher, M., Kreidenweis, S. M., Bertram, A. K., and Pöschl, U.: High concentrations of biological aerosol particles and ice nuclei during and after rain, *Atmos. Chem. Phys.*, 13, 6151–6164, doi:10.5194/acp-13-6151-2013, 2013.
- Jones, H. M., Flynn, M. J., DeMott, P. J., and Möhler, O.: Manchester Ice Nucleus Counter (MINC) measurements from the 2007 International workshop on Comparing Ice nucleation Measuring Systems (ICIS-2007), *Atmos. Chem. Phys.*, 11, 53–65, doi:10.5194/acp-11-53-2011, 2011.
- Knopf, D. A., Wang, B., Laskin, A., Moffet, R. C., and Gilles, M. K.: Heterogeneous nucleation of ice on anthropogenic organic particles collected in Mexico City, *Geophys. Res. Lett.*, 37, L11803, doi:10.1029/2010GL043362, 2010.
- Knopf, D. A., Alpert, P. A., Wang, B., O’Brien, R. E., Kelly, S. T., Laskin, A., Gilles, M. K., and Moffet, R. C.: Microspectroscopic imaging and characterization of individually identified ice nu-

- cleating particles from a case field study, *J. Geophys. Res.*, 119, 10365–10381, doi:10.1002/2014JD021866, 2014.
- Koop, T., Luo, B., Biermann, U. M., Crutzen, P. J., and Peter, T.: Freezing of  $\text{HNO}_3/\text{H}_2\text{SO}_4/\text{H}_2\text{O}$  solutions at stratospheric temperatures: Nucleation statistics and experiments, *J. Phys. Chem. A*, 101, 1117–1133, doi:10.1021/jp9626531, 1997.
- Koop, T., Ng, H. P., Molina, L. T., and Molina, M. J.: A New Optical Technique to Study Aerosol Phase Transitions: The Nucleation of Ice from  $\text{H}_2\text{SO}_4$  Aerosols, *J. Phys. Chem. A*, 102, 8924–8931, doi:10.1021/jp9828078, 1998.
- Koop, T., Kapilashrami, A., Molina, L. T., and Molina, M. J.: Phase transitions of sea-salt/water mixtures at low temperatures: Implications for ozone chemistry in the polar marine boundary layer, *J. Geophys. Res.*, 105, 26393–26402, doi:10.1029/2000JD900413, 2000.
- Langer, G. and Rodgers, J.: An Experimental Study of the Detection of Ice Nuclei on Membrane Filters and Other Substrata, *J. Appl. Meteorol.*, 14, 560–570, 1975.
- Lohmann, U.: A glaciation indirect aerosol effect caused by soot aerosols, *Geophys. Res. Lett.*, 29, 1052, doi:10.1029/2001GL014357, 2002.
- Maenhaut, W., Ducastel, G., Hillamo, R. E., and Pakkanen, T. A.: Evaluation of the applicability of the MOUDI impactor for aerosol collections with subsequent multielement analysis by PIXE, *Nucl. Instrum. Meth. B*, 75, 249–256, doi:10.1016/0168-583X(93)95653-M, 1993.
- Marple, V. A. and Willeke, K.: Impactor design, *Atmos. Environ.*, 10, 891–896, doi:10.1016/0004-6981(76)90144-X, 1976.
- Marple, V. A., Rubow, K. L., and Behm, S. M.: A Micro-orifice Uniform Deposit Impactor (MOUDI): Description, Calibration, and Use, *Aerosol Sci. Tech.*, 14, 434–446, doi:10.1080/02786829108959504, 1991.
- Möhler, O., Field, P. R., Connolly, P., Benz, S., Saathoff, H., Schnaiter, M., Wagner, R., Cotton, R., Krämer, M., Mangold, A., and Heymsfield, A. J.: Efficiency of the deposition mode ice nucleation on mineral dust particles, *Atmos. Chem. Phys.*, 6, 3007–3021, doi:10.5194/acp-6-3007-2006, 2006.
- Möhler, O., DeMott, P. J., Stetzer, O., and the ICIS-2007 team: The Fourth International Ice Nucleation Workshop ICIS-2007, Proceedings of 15th ICCP, Cancun, Mexico, 7–11 July, 2008.
- Murray, B. J., Broadley, S. L., Wilson, T. W., Atkinson, J. D., and Wills, R. H.: Heterogeneous freezing of water droplets containing kaolinite particles, *Atmos. Chem. Phys.*, 11, 4191–4207, doi:10.5194/acp-11-4191-2011, 2011.
- Murray, B. J., O’Sullivan, D., Atkinson, J. D., and Webb, M. E.: Ice nucleation by particles immersed in supercooled cloud droplets, *Chem. Soc. Rev.*, 41, 6519–6554, doi:10.1039/c2cs35200a, 2012.
- Petzold, A., Ström, J., Ohlsson, S., and Schröder, F. P.: Elemental composition and morphology of ice-crystal residual particles in cirrus clouds and contrails, *Atmos. Res.*, 49, 21–34, doi:10.1016/S0169-8095(97)00083-5, 1998.
- Pratt, K. A., Heymsfield, A. J., Twohy, C. H., Murphy, S. M., DeMott, P. J., Hudson, J. G., Subramanian, R., Wang, Z., Seinfeld, J. H., and Prather, K. A.: In Situ Chemical Characterization of Aged Biomass-Burning Aerosols Impacting Cold Wave Clouds, *J. Atmos. Sci.*, 67, 2451–2468, doi:10.1175/2010JAS3330.1, 2010.
- Prodi, F., Santachiara, G., Prodi, V., and De Zaiacomio, T.: An Experimental Technique to Study the Effect of Size on Ice Nucleation, *J. Appl. Meteorol.*, 19, 1448–1450, 1980.
- Pruppacher, H. R. and Klett, J. D.: *Microphysics of Clouds and Precipitation*, Kluwer Academic Publishers, Dordrecht, the Netherlands, 1997.
- Rasband, W. S.: ImageJ, U. S. National Institutes of Health, Bethesda, Maryland, USA, available at: <http://imagej.nih.gov/ij/>, last access: 19 July 2014.
- Richardson, M. S., DeMott, P. J., Kreidenweis, S. M., Cziczo, D. J., Dunlea, E. J., Jimenez, J. L., Thomson, D. S., Ashbaugh, L. L., Borys, R. D., Westphal, D. L., Casuccio, G. S., and Lersch, T. L.: Measurements of heterogeneous ice nuclei in the western United States in springtime and their relation to aerosol characteristics, *J. Geophys. Res.*, 112, D02209, doi:10.1029/2006JD007500, 2007.
- Rogers, D. C.: Development of a continuous flow thermal gradient diffusion chamber for ice nucleation studies, *Atmos. Res.*, 22, 149–181, doi:10.1016/0169-8095(88)90005-1, 1988.
- Rogers, D. C., DeMott, P. J., Kreidenweis, S. M., and Chen, Y.: A continuous-flow diffusion chamber for airborne measurements of ice nuclei, *J. Atmos. Ocean. Tech.*, 18, 725–741, 2001.
- Rosinski, J., Haagenson, P. L., Nagamoto, C. T., and Parungo, F.: Ice-forming nuclei of maritime origin, *J. Aerosol Sci.*, 17, 23–46, doi:10.1016/0021-8502(86)90004-2, 1986.
- Rosinski, J., Haagenson, P. L., Nagamoto, C. T., and Parungo, F.: Nature of ice-forming nuclei in marine air masses, *J. Aerosol Sci.*, 18, 291–309, doi:10.1016/0021-8502(87)90024-3, 1987.
- Rosinski, J., Haagenson, P. L., Nagamoto, C. T., Quintana, B., Parungo, F., and Hoyt, S. D.: Ice-forming nuclei in air masses over the Gulf of Mexico, *J. Aerosol Sci.*, 19, 539–551, doi:10.1016/0021-8502(88)90206-6, 1988.
- Santachiara, G., Di Matteo, L., Prodi, F., and Belosi, F.: Atmospheric particles acting as Ice Forming Nuclei in different size ranges, *Atmos. Res.*, 96, 266–272, doi:10.1016/j.atmosres.2009.08.004, 2010.
- Storelvmo, T., Hoose, C., and Eriksson, P.: Global modeling of mixed-phase clouds: The albedo and lifetime effects of aerosols, *J. Geophys. Res.*, 116, D05207, doi:10.1029/2010JD014724, 2011.
- Szyrmer, W. and Zawadzki, I.: Biogenic and anthropogenic sources of ice-forming nuclei: A review, *B. Am. Meteorol. Soc.*, 78, 209–228, 1997.
- Targino, A. C., Krejci, R., Noone, K. J., and Glantz, P.: Single particle analysis of ice crystal residuals observed in orographic wave clouds over Scandinavia during INTACC experiment, *Atmos. Chem. Phys.*, 6, 1977–1990, doi:10.5194/acp-6-1977-2006, 2006.
- Vali, G.: Sizes of Atmospheric Ice Nuclei, *Nature*, 212, 384–385, doi:10.1038/212384a0, 1966.
- Vali, G.: Quantitative Evaluation of Experimental Results on the Heterogeneous Freezing Nucleation of Supercooled Liquids, *J. Atmos. Sci.*, 28, 402–409, 1971.
- Vali, G. and Stansbury, E. J.: Time-dependent characteristics of the heterogeneous nucleation of ice, *Can. J. Phys.*, 44, 477–502, doi:10.1139/p66-044, 1966.
- Vali, G., DeMott, P., Möhler, O., and Whale, T. F.: Ice nucleation terminology, *Atmos. Chem. Phys. Discuss.*, 14, 22155–22162, doi:10.5194/acpd-14-22155-2014, 2014.

- Wang, B., Lambe, A. T., Massoli, P., Onasch, T. B., Davidovits, P., Worsnop, D. R., and Knopf, D. A.: The deposition ice nucleation and immersion freezing potential of amorphous secondary organic aerosol: Pathways for ice and mixed-phase cloud formation, *J. Geophys. Res.*, 117, D16209, doi:10.1029/2012JD018063, 2012a.
- Wang, B., Laskin, A., Roedel, T., Gilles, M. K., Moffet, R. C., Tivanski, A. V., and Knopf, D. A.: Heterogeneous ice nucleation and water uptake by field-collected atmospheric particles below 273 K, *J. Geophys. Res.*, 117, D00V19, doi:10.1029/2012JD017446, 2012b.
- Welti, A., Lüönd, F., Kanji, Z. A., Stetzer, O., and Lohmann, U.: Time dependence of immersion freezing: an experimental study on size selected kaolinite particles, *Atmos. Chem. Phys.*, 12, 9893–9907, doi:10.5194/acp-12-9893-2012, 2012.
- Wex, H., Augustin-Bauditz, S., Boose, Y., Budke, C., Curtius, J., Diehl, K., Dreyer, A., Frank, F., Hartmann, S., Hiranuma, N., Jantsch, E., Kanji, Z. A., Kiselev, A., Koop, T., Möhler, O., Niedermeier, D., Nillius, B., Rösch, M., Rose, D., Schmidt, C., Steinke, I., and Stratmann, F.: Intercomparing different devices for the investigation of ice nucleating particles using Snomax<sup>®</sup> as test substance, *Atmos. Chem. Phys.*, 15, 1463–1485, doi:10.5194/acp-15-1463-2015, 2015.
- Wheeler, M. J. and Bertram, A. K.: Deposition nucleation on mineral dust particles: a case against classical nucleation theory with the assumption of a single contact angle, *Atmos. Chem. Phys.*, 12, 1189–1201, doi:10.5194/acp-12-1189-2012, 2012.
- Wheeler, M. J., Mason, R. H., Steunenberg, K., Wagstaff, M., Chou, C., and Bertram, A. K.: Immersion Freezing of Supermicron Mineral Dust Particles: Freezing Results, Testing Different Schemes for Describing Ice Nucleation, and Ice Nucleation Active Site Densities, *J. Phys. Chem. A*, 119, 4358–4372, doi:10.1021/jp507875q, 2015.
- Wright, T. P. and Petters, M. D.: The role of time in heterogeneous freezing nucleation, *J. Geophys. Res.-Atmos.*, 118, 3731–3743, doi:10.1002/jgrd.50365, 2013.
- Wright, T. P., Petters, M. D., Hader, J. D., Morton, T., and Holder, A. L.: Minimal cooling rate dependence of ice nuclei activity in the immersion mode, *J. Geophys. Res.-Atmos.*, 118, 10535–10543, doi:10.1002/jgrd.50810, 2013.
- Zeng, X., Tao, W.-K., Zhang, M., Hou, A. Y., Xie, S., Lang, S., Li, X., Starr, D. O., Li, X., and Simpson, J.: An Indirect Effect of Ice Nuclei on Atmospheric Radiation, *J. Atmos. Sci.*, 66, 41–61, doi:10.1175/2008JAS2778.1, 2009.