



2020

Unidentified Photograph Collection - Accession 1727

Photographs, Unidentified

Follow this and additional works at: https://digitalcommons.winthrop.edu/manuscriptcollection_findingaids

Finding Aid Citation

Louise Pettus Archives and Special Collections, Winthrop University, "Unidentified Photograph Collection - Accession 1727". Finding Aid 1191.

https://digitalcommons.winthrop.edu/manuscriptcollection_findingaids/1191

This Finding Aid is brought to you for free and open access by the Louise Pettus Archives and Special Collections at Digital Commons @ Winthrop University. It has been accepted for inclusion in Manuscript Collection by an authorized administrator of Digital Commons @ Winthrop University. For more information, please contact bramed@winthrop.edu.



**WINTHROP UNIVERSITY
LOUISE PETTUS ARCHIVES & SPECIAL COLLECTIONS**

MANUSCRIPT COLLECTION

ACCESSION 1727

UNIDENTIFIED PHOTOGRAPH COLLECTION

1890s-1960s

1 Box, 1 folder

**WINTHROP UNIVERSITY
LOUISE PETTUS ARCHIVES & SPECIAL COLLECTIONS**

MANUSCRIPT COLLECTION

ACC. NO.: 1727
ADDITIONS: _____, _____, _____

PROCESSED BY: Andrew Johnston
DATE: January 23, 2020
NO. OF SECTIONS: 2

UNIDENTIFIED PHOTOGRAPH COLLECTION

I

The Unidentified Photograph Collection is an artificial collection created to house the images received by the Louise Pettus Archives and Special Collections that are of unknown origin and subject. The provenance of these items is often unknown.

Linear feet of shelf space occupied: .25
Approximate number of pieces: 500

Restrictions: Open to researchers under the rules and regulations of the Louise Pettus Archives & Special Collections at Winthrop University.

Literary Rights: For information concerning literary rights please contact the Louise Pettus Archives & Special Collections at Winthrop University.

Scope and Content Note: **This collection consists of the various unidentified photographs that are not part of a larger collection. These historically relevant photographs and images are unidentified with little to no provenance. Many of these images could be of local interest, but the location and the persons present are unknown. This artificial collection will continuously be added to as new donations of unidentified images are received or found that could have historical relevance as determined by Director of Archives.**

II

DESCRIPTION OF SERIES

<u>Box(es)</u>	<u>Folder(s)</u>	<u>Series</u>	<u>Year(s)</u>
1	1	PHOTOGRAPHS This folder consist of an image with a large group of men (mostly African American men) labeled Camp Austin 8/23/29, two photographs from a quarry (ca1890s), several men standing on or next to a train (ca1900), and a couple photographs of workers in a factory (ca1960s). <i>*See Appendix I for scans of the unidentified images.</i>	1890s-1960s

APPENDIX I

Images

Image 1

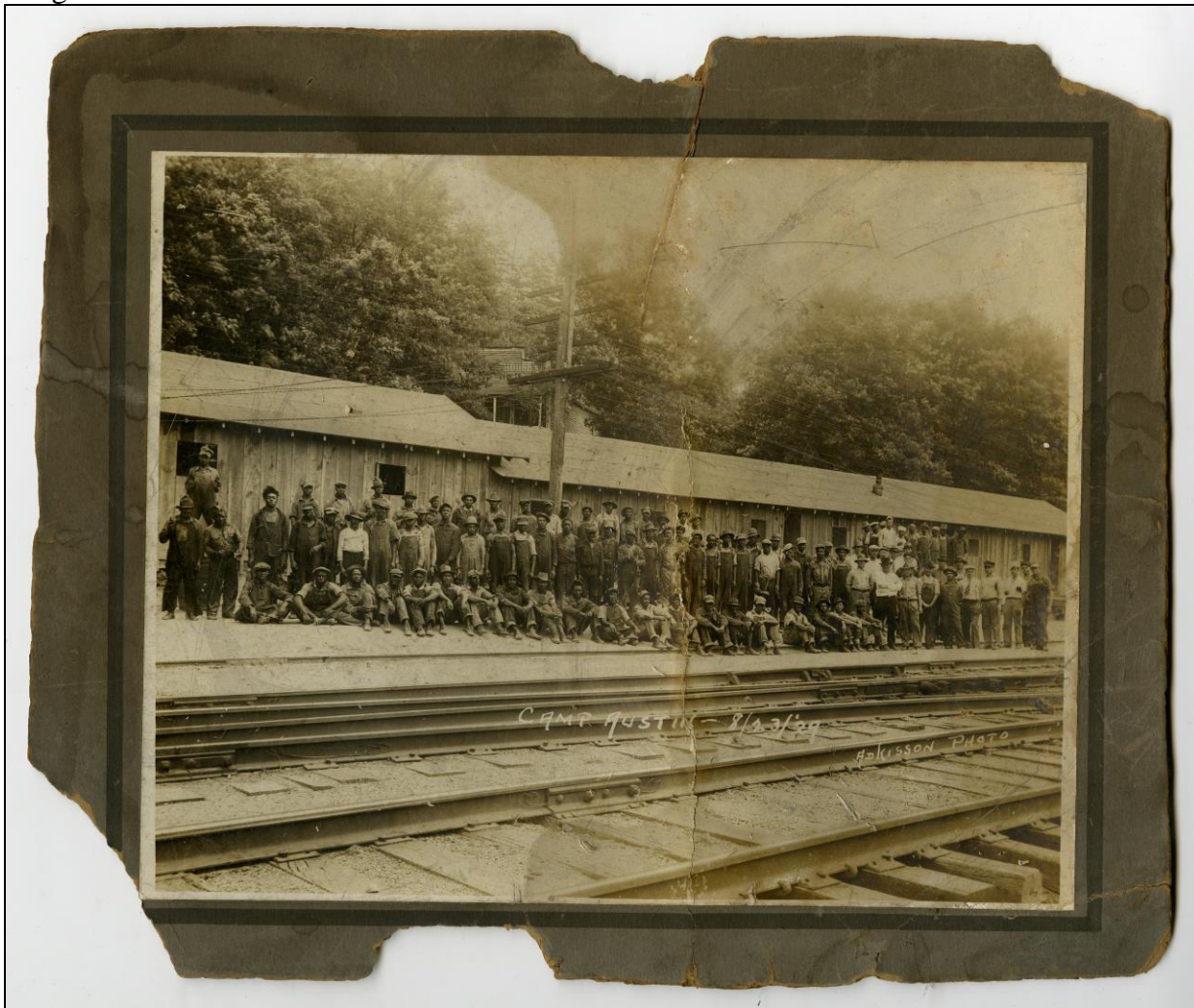


Image 2



Image 3



Image 4



Image 5



Image 6

