



Ursinus College  
**Digital Commons @ Ursinus College**

---

Health and Exercise Physiology Faculty  
Publications

Health and Exercise Physiology Department

---

9-26-2019

## Ketogenic Diets and Exercise Performance

Kristin L. Harvey

Lola Holcomb

Stephen C. Kolwicz Jr.

Follow this and additional works at: [https://digitalcommons.ursinus.edu/health\\_fac](https://digitalcommons.ursinus.edu/health_fac)

 Part of the [Dietetics and Clinical Nutrition Commons](#), and the [Exercise Science Commons](#)

[Click here to let us know how access to this document benefits you.](#)

---

Discussion

# Ketogenic Diets and Exercise Performance

Kristin L. Harvey, Lola E. Holcomb and Stephen C. Kolwicz, Jr. \* 

Heart and Muscle Metabolism Laboratory, Health and Exercise Physiology, Ursinus College, Collegeville, PA 19426, USA; krharvey@ursinus.edu (K.L.H.); loholcomb@ursinus.edu (L.E.H.)

\* Correspondence: skolwicz@ursinus.edu; Tel.: +1-610-409-3497

Received: 31 August 2019; Accepted: 24 September 2019; Published: 26 September 2019



**Abstract:** The ketogenic diet (KD) has gained a resurgence in popularity due to its purported reputation for fighting obesity. The KD has also acquired attention as an alternative and/or supplemental method for producing energy in the form of ketone bodies. Recent scientific evidence highlights the KD as a promising strategy to treat obesity, diabetes, and cardiac dysfunction. In addition, studies support ketone body supplements as a potential method to induce ketosis and supply sustainable fuel sources to promote exercise performance. Despite the acceptance in the mainstream media, the KD remains controversial in the medical and scientific communities. Research suggests that the KD or ketone body supplementation may result in unexpected side effects, including altered blood lipid profiles, abnormal glucose homeostasis, increased adiposity, fatigue, and gastrointestinal distress. The purpose of this review article is to provide an overview of ketone body metabolism and a background on the KD and ketone body supplements in the context of obesity and exercise performance. The effectiveness of these dietary or supplementation strategies as a therapy for weight loss or as an ergogenic aid will be discussed. In addition, the recent evidence that indicates ketone body metabolism is a potential target for cardiac dysfunction will be reviewed.

**Keywords:** ketosis; endurance exercise; ketone supplements; obesity; ketone bodies; metabolism

## 1. Introduction

Nutritional intervention and supplementation remain popular strategies for the reduction of body weight and/or for the enhancement of exercise performance. Recently, the ketogenic diet (KD) has emerged as a celebrated dietary plan for the treatment of obesity and diabetes [1]. In addition to being used for weight and body composition management, KDs and/or “keto” supplements are a prominent point of interest within the athletic community for the potential promise as a “superfuel” [2,3]. Although the KD has been used successfully for certain health conditions, questions remain on the long-term impact of the diet on obesity, diabetes, and risk factors for cardiovascular disease (CVD). In addition, the use of the KD as a performance-enhancing substance is still a subject of debate.

KDs are low-carbohydrate, high fat, moderate protein diets that typically supply approximately 80% of calories from fat, 15% calories from protein, and 5% calories from carbohydrates [4,5]. For almost 100 years, the diet has been used for the treatment of epilepsy, but has been reintroduced to the public over last few years. In theory, the high fat content combined with the low carbohydrate intake is purported to stimulate fat oxidation and promote fat loss. Although the diet itself is controversial [4,6,7], KD consumption induces a physiological metabolic state of elevated serum ketone bodies known as “ketosis” in which the cellular oxidation of ketone bodies is enhanced [8]. Recent evidence suggests that increased reliance on ketone body metabolism offers a metabolic advantage in the failing heart and an ergogenic aid for exercise performance [2,3,9–11]. These studies, and others, have stimulated interest in the potential health and performance enhancing benefits of KDs.

The presence of KDs in mainstream and social media, combined with the abundance of “keto” supplements available for purchase, make the diet and supplements extremely attractive for weight

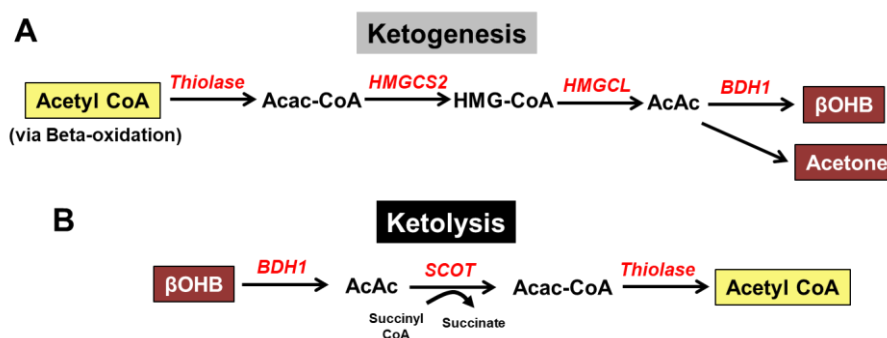
loss and athletic performance enhancement. However, the medical community has been reluctant to offer endorsement, due to the potentially negative side effects inherent in the consumption of a diet extremely high in fats with minimal carbohydrates. Moreover, the inconsistent findings prominent in the research literature offer little support from the scientific community. This review will describe ketone body metabolism, define the KD, and summarize the available literature on the potential benefits of KDs and keto-supplements for exercise performance.

## 2. Overview of Ketone Body Metabolism

Ketone bodies were once considered consequences of aberrant metabolism, produced by the incomplete oxidation of fat due to insufficient carbohydrate availability [12]. This perception led to the labeling of ketone bodies as “metabolic garbage” and “villains of metabolism” [13]. However, ketone bodies are present in the circulation during fed and fasted conditions, although serum concentrations are generally low under basal conditions, typically 0.1 to 0.4 mM in humans and rodents. Ketone body concentration is elevated during periods of nutrient deprivation or low carbohydrate availability, such as fasting/starvation [14], exercise [15], or diabetes [16,17], encompassing both physiological and pathological conditions. In humans, serum ketone body levels are 1–4 mM after a short-term fast (2–3 days), and elevate to 7–9 mM with prolonged fasting (17–24 days) [5,18]. Post-exercise, humans can achieve serum ketone body concentrations of 1–2 mM [19,20]. With low carbohydrate or KDs, serum ketone body levels can increase to above 5 mM [19]. Our published and unpublished data in mice, and those of other research groups, show values of serum ketone bodies comparable to humans: 0.2–0.4 mM (basal); 0.6–0.8 mM (6-hour fasting); >3.0 mM (prolonged fasting); 0.8–1.2 mM (post-exercise); ~1.0 mM (KD) [14,15,21–23].

Ketone bodies are short-chained, four-carbon molecules synthesized in liver mitochondria through a process called “ketogenesis.” The ketogenic process (Figure 1A) requires acetyl-CoA, generated via the beta-oxidation of fatty acids, and continues with the aid of several enzymes, including mitochondrial acetyl-CoA acetyltransferase 1 (also known as thiolase), 3-hydroxy-3-methylglutaryl-CoA synthase (HMGCS2), HMG-CoA lyase, and mitochondrial beta-hydroxybutyrate dehydrogenase (BDH1). This process ultimately results in the production of the primary ketone bodies released into the bloodstream: acetoacetate (AcAc) or  $\beta$ -hydroxybutyrate ( $\beta$ -OHB). The ketone body with the highest concentration within the blood is  $\beta$ -OHB; therefore, the breakdown or “ketolysis” pathway generally begins with  $\beta$ -OHB (Figure 1B). Once in the circulation,  $\beta$ -OHB may enter the heart or skeletal muscle cell via monocarboxylate transporters, MCT1 and MCT2 [24]; however, since  $\beta$ -OHB is a short-chain fatty acid, simple diffusion is also possible.  $\beta$ -OHB is then rapidly oxidized into AcAc via BDH1, and subsequently, converted to acetyl CoA via succinyl-CoA:3-oxoacid-CoA transferase (SCOT), and thiolase, for entry into the tricarboxylic acid (TCA) cycle.

Ketone bodies are suggested to be a more energy efficient substrate than glucose or fatty acids [5,25]. However, energy efficiency may be interpreted in multiple ways. In terms of ATP production efficiency, fatty acids yield ~6.7 ATP per carbon atom, compared to ~5.2 for glucose and ~5.4 for ketone bodies [26,27]. For many researchers, energy efficiency refers to the ATP yield per oxygen atom (i.e., P/O ratio). The P/O ratio for fatty acids is ~2.33, while glucose’s is 2.58 and ketone bodies’ is 2.50 [26,27]. For some researchers, cardiac (or muscle) efficiency is a critical measure, which determines the ratio of mechanical work to oxygen consumed. Determination of these values requires complex experimental designs and data collection techniques, which are commonly performed in isolated, perfused heart preparations. In addition, the intricate interactions of certain biochemical pathways may lead to increased energetic costs and/or losses, particularly for fatty acids [5]. Ketone bodies combined with glucose were shown to elicit a higher cardiac efficiency relative to glucose alone [28,29]. Although ketone bodies increased energy production, particularly in hypertrophied hearts, a significant improvement in cardiac efficiency was not achieved [30]. Whether provisions of ketone bodies, glucose, and/or fatty acids lead to a significant alteration in cardiac or skeletal muscle efficiency in healthy or diseased states remains unclear.



**Figure 1.** Overview of ketone body metabolism. (A) The formation of ketone bodies ( $\beta$ OHB, AcAc, and acetone) from acetyl CoA (via beta-oxidation) occurs in the liver via ketogenesis; (B) the breakdown of ketone bodies ( $\beta$ OHB) in the cells via ketolysis yields acetyl CoA. AcAc, acetoacetate; AcAc CoA, acetoacetyl CoA;  $\beta$ OHB, beta-hydroxybutyrate; BDH1, mitochondrial beta-hydroxybutyrate dehydrogenase; HMGCS2, 3-hydroxy-3-methylglutaryl-CoA synthase; HMGCL, HMGC-CoA lyase; SCOT, succinyl-CoA:3-oxoacid-CoA transferase.

Ketosis is considered a physiological condition characterized by an acute state of elevated serum ketone body concentrations, from 0.5 to 3.0 mM. As noted above, such ranges can be achieved via short-term fasting, exercise, or low-carbohydrate diets. Furthermore, ketosis can be classified into “physiological ketosis,” which occurs during fasting or exercise, and “nutritional ketosis,” induced by nutritional or supplementation strategies. The metabolic state of ketosis should not be confused with ketoacidosis. In contrast to ketosis, ketoacidosis is a pathological condition with elevated serum ketone levels (3.8–25 mM) and decreased arterial pH values (7.30 to 7.20) that may be seen in diabetics [31–33]. Therefore, these specific terms should be used for clarity when evaluating the systemic effects of elevated ketone body concentrations.

### 3. Ketogenic Diets and Weight Loss

The prevalence of obesity in the United States remains a significant public health issue, as nearly one-third of men and women are classified as overweight or obese [34]. This increase in body weight and adipose tissue mass increases the risk of developing hypertension [35], type II diabetes [36], and CVD [37]. Behavioral modifications, specifically dietary strategies and physical activity/exercise, are recommended to combat obesity. Over the years, numerous “fad diets,” such as the Atkins or South Beach diets, have been popularized for weight loss with varying levels of patient outcomes, scientific evidence, and support from the medical community [38]. More recently, the KD has been proposed as a strategy for combatting obesity, since it induces rapid weight loss. The lack of carbohydrate availability in the diet is proposed to induce fatty acid mobilization from adipose tissue as a way to supply energy to the body via ketone bodies, resulting in an efficient method of promoting weight loss [4].

Although the precise composition of the KD varies throughout the literature, the diet is typically defined as a low carbohydrate diet that contains adequate protein (15–20%) and high caloric intake from fat. The original KD was developed by physician-researchers, Woodyatt and Wilder, at the Mayo Clinic in the early 1920s, as a treatment for diabetics and epileptic children [39,40]. The dietary regimen called for 1 gram per kg of body weight of protein, 10–15 grams of carbohydrates per day, and the balance of the intake in the form of fats, resulting in an approximate fat to protein plus carbohydrate ratio of 4:1. That dietary composition is the classical Peterman KD, named after the physician who reported the formulation [41]. The KD was a frequent treatment for epilepsy in children until the introduction of antiepileptic drugs in the late 1930s, but remained prominent in medical textbooks until the 1980s [42]. The KD reemerged in the late 1990s as a treatment for intractable epilepsy or refractory seizures [42], and remains a viable therapy in instances where pharmacological intervention is not sufficient. In the last 20 years, the KD has been effective in the treatment of patients with inherited

metabolic disorders, such as glucose transporter type 1 (GLUT1) deficiency, pyruvate dehydrogenase deficiency, and glycogen storage diseases [43].

Over the last decade, research on the effectiveness of the KD in a variety of diseases and conditions has increased significantly. Human studies typically use low-carbohydrate (LC), which is not necessarily a true KD, or very low-carbohydrate ketogenic diets (VLCKD), in which carbohydrate intake can range between 20–50 grams per day or less than 10% of calories, respectively [44,45]. In some studies, the term Atkins diet is also used [46,47]. In other studies, the LC diets are more aligned with reduced carbohydrate diets (intakes of 35–45% calories per day) [48,49]. Thus, the precise characteristics of the dietary intervention are important in the ultimate interpretation of the results.

Several human studies evaluated the benefits of LC or KD diets on weight loss. In a one-year study of 160 overweight and obese individuals, the Atkins diet lowered body weight, cholesterol, and insulin to the same degree as low-fat, caloric restriction, or reduced carbohydrate (40% of calories) diets [46]. A similar observation was made in 90 patients with increased risks of CVD and type 2 diabetes after 6 months of dietary intervention [47]. A 12-week LC diet in adolescents led to significant reductions in body weight and LDL cholesterol compared to a low-fat diet [45]. Conversely, LC diets showed similar weight loss compared to low-fat diets in obese patients after 2 years [44,50]. However, the LC diet was met with an improvement in blood lipid profiles and other CVD risk factors [44,50]. A reduced carbohydrate diet (35–45% caloric intake) showed similar weight loss compared to a reduced fat diet (20% calories) in approximately 400 and 800 overweight adults after 2 years of treatment [48,49]. In a meta-analysis study encompassing ~1600 patients, a VLCKD diet achieved greater weight loss, reduced diastolic blood pressure, lowered serum triglyceride levels, and elevated HDL levels compared to a low-fat diet at 12 and 24 months [51]. Unfortunately, LDL levels were significantly higher in the VLCKD patients [51]. In total, a reduction and restriction of carbohydrate intake appears to be sufficient to promote weight loss. However, whether this dietary strategy is more effective than other methods is not clear. It should be noted that the above studies did not evaluate serum ketone body levels, so whether the weight loss is associated with ketosis or a ketogenic effect is not known.

In the aforementioned human studies, a major limitation is patient adherence to the assigned dietary intervention. Therefore, animal studies, particularly in rodent models, may provide better insight. Some studies in mice utilize diets that are more reflective of a true KD, in which fat represents 90–95% of the total calories, protein 5–10%, and carbohydrates ~1% [14,21,52,53]. When C57BL6/J mice are fed a KD for 5 to 8 weeks, mild weight loss (~10%) occurs, particularly in the first 1–3 weeks [14,21]. In addition, KD-fed mice gain significantly less weight than mice fed a high fat diet (HFD, 60% of total calories) [21]. Although a 5-week treatment of KD in mice being fed a HFD for 12 weeks reduces body weight [21], KDs in ob/ob mice are not effective at reducing obesity [52]. Moreover, long-term treatment (22 weeks) of mice with KD does not result in body weight changes and may lead to glucose intolerance and insulin resistance [53]. These studies support the KD as a weight loss strategy in mice, particularly in the short-term. However, long-term consumption of the KD, especially with an extremely high fat content and reduced protein, may result in unexpected consequences.

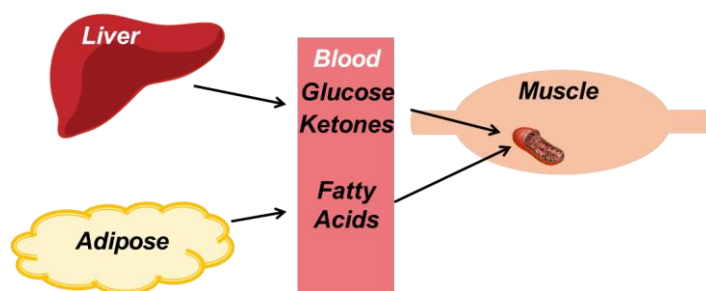
## 4. Ketogenic Diets and Exercise Performance

### 4.1. Overview of Metabolism During Exercise

Actively-contracting muscles receive the contributions of three major energy pathways, which are influenced by the time and intensity of the exercise [54]. The phosphocreatine (PCr) to ATP reaction, regulated by creatine kinase (e.g., the phosphagen system), is essential in resynthesizing ATP during immediate, high intensity work, and is a dominant system during the initial seconds of exercise. In moderate to high-intensity exercise sessions, lasting up to ~90 s, the short-term lactic acid system is a major contributor. During this interval, ATP resynthesis is primarily met by glycogen-dependent glycolysis [55]. In moderately intense, long-duration exercise, the long-term aerobic system supplies metabolic substrates to support oxidative metabolism. Oxygen demands and oxygen uptake determine

the contribution of the above energy systems during the metabolic response to exercise. During the initial moments of exercise, a large increase in oxygen uptake is required to match the energetic demands of the contracting muscle cells. However, a mismatch between the metabolic demands and oxygen uptake exists for several seconds to several minutes, called the “oxygen deficit” [56]. During the oxygen deficit, the phosphagen system and lactic acid system are the major supporters of ATP resynthesis. Once oxygen uptake and oxygen demand are in balance, oxidative phosphorylation via the aerobic system becomes the dominant pathway to maintain ATP regeneration.

Once steady-state aerobic metabolism is reached, a steady supply of exogenous substrates are needed to maintain exercise. As shown in Figure 2, these exogenous substrates are supplied by the liver and adipose tissue. During aerobic exercise, the liver has the primary role of maintaining blood glucose levels via glycogenolysis, and to a smaller degree, gluconeogenesis. In addition, the liver can produce ketone bodies from elevated serum concentrations of fatty acids. A sustained rise in serum fatty acids occurs due to the lipolysis of adipose tissue, activated by beta-adrenergic stimulation [57]. Through these coordinated efforts of the liver and adipose tissue, a sufficient supply of substrates, namely, glucose, ketone bodies, and fatty acids, fuels the contraction of cardiac and skeletal muscle. Cardiac muscle has an added benefit, as it demonstrates an increased capacity to utilize lactate produced by the skeletal muscle during higher workloads [58].



**Figure 2.** The exogenous supply of substrates during exercise. During exercise, skeletal muscle requires a constant supply of exogenous substrates to fuel contraction. The liver provides glucose and ketone bodies via gluconeogenesis and ketogenesis, respectively. Adipose tissue lipolysis maintains serum fatty acid concentrations.

#### 4.2. The Effects on Aerobic Endurance Exercise

The contribution of fatty acids to oxidative metabolism varies with exercise intensity and duration [59]. During low-to-moderate intensity exercise, the oxidation of exogenous fatty acids is a significant source of energy. During exercise of a moderate intensity, the contribution of fatty acids to oxidative metabolism increases, as the duration of the exercise bout is prolonged. In that regard, strategies that promote the availability of fatty acids may be critical to optimizing endurance exercise performance. The KD may be advantageous, especially for aerobic endurance exercise, by promoting fat usage, rather than carbohydrates, for fuel. Fat from adipose tissue is considered a steady supply of energy, while endogenous carbohydrate stores from glycogen in the skeletal muscle and the liver are finite. Elevated ketone bodies, resulting from the KD, may provide an alternative or supplemental fuel source to sustain endurance exercise.

There are numerous studies over the past decade that examined the effect of low carbohydrate (LC) or KD (LC/KD) diets on endurance exercise performance in humans [20,60–69]. A vast majority of the studies focused on endurance-trained individuals, and included primarily male athletes. The diets utilized in the studies varied with the average caloric intake percentage from fat at 73% (range 63–80%); carbohydrates 7% (3.5–15%); and protein 20% (15–29%). Treatment times varied from as little as 3 weeks [60,66] up to 20 months [20]. Serum ketone body concentrations (mostly  $\beta$ OHB) reportedly increased anywhere from 0.5mM to 1.2mM, and did not appear to relate to the fat composition or treatment time of the diets. Most of these studies reported significant decreases in body weight or fat

mass [60,64–67,69]. Therefore, LC/KD diets appear to be an effective dietary strategy to induce weight loss and improve body composition in trained athletes.

However, despite the positive changes in body and fat mass, LC/KD diets are not effective in producing significant improvements in exercise performance, despite significant decreases in respiratory exchange ratio (RER), representing an increase in fatty acid oxidation (FAO). LC/KD did not significantly alter total time to exhaustion (TTE) [62,67], maximal oxygen uptake ( $\text{VO}_2\text{max}$ ) [61–64,67,69], or endurance cycling performance [65]. In contrast, the consumption of a LC/KD for 3 weeks, combined with exercise training, impaired the training adaptations of elite race walkers by elevating oxygen consumption rates during activity [60]. In 30-year-old endurance trained males fed a LC/KD for 1 month, TTE was reduced at 70% intensity, despite no change at 60% intensity [67]. Two studies that included a population of females presented interesting results [63,69]. In a small study of endurance athletes, 90% comprised of females, TTE was significantly decreased after 10 weeks of LC/KD [69]. Similarly, LC/KD fed females from a recreational-trained Cross-Fit cohort experienced a non-significant 5% decrease in  $\text{VO}_2\text{max}$ , while males were unaffected by the diet [63]. These studies clearly show that LC/KD in trained individuals offers no enhancement in exercise performance, and may lead to decreased performance, particularly in females.

Studies on the effects of LC/KD on exercise performance in overweight/obese individuals are limited and revealed varying results [70–73]. An early study suggested that moderately obese individuals (primarily female) following a reduced carbohydrate (CHO) diet (45% calories) lost significant body weight and fat mass, and had improved endurance times during moderate exercise intensity [72]. Although obese females consuming a diet of 33% CHO combined with exercise training experienced 20% greater weight loss, the improvement in TTE was similar to high CHO diet [72]. A LC/KD for middle-aged, obese adults for 52 weeks led to a greater decrease in body weight and fat mass, compared to a low calorie or mixed diet, but did not result in improved exercise performance [74]. In overweight/obese adults, a LC/KD diet led to significant weight loss only in males, with no significant change in TTE or  $\text{VO}_2\text{max}$  in males or females compared to a low fat diet [70]. However, a 2-week LC/KD diet in overweight adults did not lead to weight loss, but increased fatigue and perceived effort [73]. It should be noted that the keto-adaptation period is suggested to be 2–4 weeks [75], so results of very short dietary interventions should be interpreted with caution. Although LC/KDs appear effective in the management of body weight and fat mass in overweight and obese individuals, the effects on exercise performance remain unclear and may depend on the degree of carbohydrate restriction and length of the dietary intervention.

Studies in rodents fed a LC/KD diet may provide some additional mechanistic insight into the effects of the LC/KD on exercise performance, particularly since the diet can be well controlled and the capability of performing bio-molecular measures is not limited. The composition of the LC/KD fed to rodents typically ranges from 70–78% fat with 1–5% CHO and 9–20% protein [76–80]. In C57BL6/J male mice, 8 weeks of KD improved exercise treadmill times and molecular markers of recovery [77,78]. However, 4 weeks of KD fed to female C57BL6 mice decreased aerobic capacity [80]. In Sprague Dawley rats, voluntary running distance was not different during 6 weeks of KD [76]; however, run time to exhaustion on a treadmill was improved after 1 or 5 weeks of KD [79], compared to chow-fed controls. In addition to variable reports in exercise performance, some potential negative side effects, including increased adipose tissue mass [78,80], decreased muscle glycogen content [79], increased serum triglycerides [80], and decreased cardiac function [80], were noted. However, KDs may decrease mortality [81,82], improve memory [81], and increase muscle citrate synthase [82] in aged mice. Perhaps additional studies in animal models are necessary to help derive definitive conclusions.

#### 4.3. Its Effects on Anaerobic Exercise

Anaerobic exercise is a high intensity, low duration exercise that lasts less than 2 min. Energy demands are met by the phosphagen system and lactic acid system, which are highly dependent upon skeletal muscle glycogen. During anaerobic exercise, high contractile forces occur within the

muscle, and muscle fibers become damaged. In addition to the replenishment of carbohydrates during the recovery period, adequate consumption of essential amino acids is important to support the protein synthesis necessary to repair and rebuild the muscle. In this regard, LC/KDs typically provide sufficient protein intake (~15% of daily calories) to avoid amino acid deficiency. However, due to the low carbohydrate intake, the increased reliance of amino acids toward gluconeogenesis and the impairment of glycogen-store restoration may adversely affect anaerobic performance.

Several studies evaluated the effects of LC/KDs on anaerobic performance, primarily assessing power or strength parameters, in various populations, including endurance athletes [65], Cross-Fit participants [83,84], gymnasts [85], and powerlifters [86]. Dietary interventions ranged from 6 weeks up to 12 weeks, and included normal training regimens typical of the populations studied. In general, consumption of the LC/KD did not result in strength [64,84–86] or power [83,84] measures that were significantly different from the control groups. One study reported a significant increase in relative power, but not absolute power, which was due to the decreased body weight experienced by the subjects [65]. In some studies, significant decreases in skeletal muscle thickness [64] or lean body mass [83] were noted. Moreover, muscle hypertrophy from resistance training may be blunted with the LC/KD [87]. These studies demonstrate that the LC/KD diet is not an effective strategy to increase anaerobic performance in trained individuals or athletes, and it has the potential to negate the expected increases in lean body mass from anaerobic training.

## 5. Ketone Body Supplementation

As LC/KDs require high fat consumption and present difficulty with long-term adherence, alternative methods for targeting ketosis as a potential intervention for weight loss or as an ergogenic aid are required. In support of these, several studies examined the benefits of ketone body supplements on exercise performance [2,88–92]. Ketone body supplements are commercially available and commonly present in the form of ketone salts (KS) or ketone esters (KE). Additionally, medium chain triglycerides (MCT) are sometimes used to induce ketosis [89] or are combined with KS to maximize the ketotic response [93].

The formulation of KS may include  $\beta$ OHB or 1,3-butanediol (BD), bound to sodium, potassium, or calcium. There are a few potential concerns with consuming KS. First,  $\beta$ OHB in the salt form could include both D and L enantiomers of  $\beta$ OHB. Since D- $\beta$ OHB is the biologically active form, approximately 50% of elevated serum  $\beta$ OHB levels are due to the presence of the non-metabolizable L- $\beta$ OHB that must be excreted via the urinary system [94]. As such, KS appears less effective at elevating serum  $\beta$ OHB comparatively [93,94]. Second, BD is a compound that must be converted to  $\beta$ OHB in the liver via dehydrogenase enzymes [95], which may result in delays in increased serum  $\beta$ OHB concentration [93]. Finally, the increased consumption of mineral salts, particularly sodium, may adversely affect blood pressure.

In the last few years, most research studies utilized KE, which appears to be the most effective method to cause immediate and sustained increases in serum ketone bodies. There are several formulations of KE supplements, but the most identifiable is the (R)-3-hydroxybutyl (R)-3-hydroxybutyrate ketone monoester, which converts to in D- $\beta$ OHB and BD upon ingestion [96]. This particular KE, when taken in combination with CHO, results in a 2% increase in exercise performance in trained cyclists [2]. However, not all KE supplements increase exercise performance [90–92], calling into question whether the precise formulation of the KE is essential or whether an additional substrate like CHO is required. Of note, the available studies focused on exercise performance in trained endurance athletes, so whether supplementation in recreational athletes or fitness enthusiasts is appropriate is not known.

## 6. Ketone Body Metabolism and the Heart

The high-energy demand of the heart requires a steady supply of carbon-based substrates in order to regenerate the ATP necessary to maintain contraction. As such, the heart is capable of utilizing all exogenous substrates (fatty acids, glucose, lactate, ketone bodies, and amino acids),



as well as endogenous substrates (triglycerides and glycogen). Past research established that fatty acids contribute 60–80% of the fuel supply in the normal, healthy heart, whereas glucose contributes 10–20% [97–100]. Ketone body oxidation was generally thought to play a relatively minor role, contributing ~10–20% in the healthy myocardium [23,100], with a relatively unknown role in the diseased heart. Since LC/KDs are in stark opposition to current guidelines published by the American College of Cardiology/American Heart Association (ACC/AHA) [101], there exists a major concern on whether the KD will promote the development and/or progression of CVD.

Cardio-metabolic derangements in various diseased states are well established in the literature. In the hypertrophied and failing heart, past research identified significant decreases in fatty acid oxidation (FAO) that is matched by a marked increase in glycolysis [99,101,102]. In the obese and diabetic heart, a mismatch between the uptake and oxidation of elevated exogenous fatty acids contributes to the development of “cardiac lipotoxicity” [97]. In general, both ketone body and amino acid metabolism have often been overlooked or deemed insignificant during cardiac disease until recently [9–11,30,103]. Recent work identified that ketone body metabolism is upregulated in the hypertrophied and failing heart [9–11], which might serve as an alternative fuel source to sustain myocardial function. Despite the recent provocative findings [9–11,104], the role of ketone body metabolism and/or KDs on cardiac metabolism and function, under both physiological and pathological conditions, remains relatively unexplored.

A recent study demonstrated that the hypertrophied and failing heart upregulates BDH1 expression and increases ketone body oxidation by 25% [9]. Furthermore, cardiac-specific deletion of BDH1 worsens cardiac function and remodeling in a mouse heart failure model [11]. Interestingly, a 4-week administration of a KD (80% fat, 20% protein and ~0% carbohydrates) improves cardiac remodeling in heart failure [11]. These findings suggest that the targeting of ketone body metabolism, particularly via a KD, might be a potential therapeutic treatment for cardiac dysfunction. However, a provision of ketone bodies to the hypertrophied heart may not improve cardiac efficiency [30] and controversy exists on whether KDs improve or exacerbate recovery from cardiac ischemia [105–107]. Moreover, in diabetic rats, long-term KD treatment may worsen diabetic cardiomyopathy [103]. Therefore, additional studies focusing on the alterations in cardiac metabolism and function elicited by long-term treatment of LC/KDs are needed in order to identify the safety and efficacy of this dietary strategy in cardiac disease.

## 7. Potential Side Effects of Ketogenic Diets

In addition to the documented changes in body weight in humans [108,109] and animals [14,21], LC/KDs are suggested as a promising therapy for various neurological disorders [110–112], metabolic disorders (Type 2 diabetes) [113,114], risk factors for CVD [115,116], and certain types of cancer [117,118]. The literature also suggests that an LC/KD extends lifespan in mice [81,119] and augments memory in mice and humans [81,120]. The KD may also be effective at targeting mitochondria, including mitochondrial biogenesis, mitochondrial function, and mitochondrial DNA mutations [121–124]. Although difficulty remains in reconciling the effects of elevated fatty acid versus elevated ketone body metabolism, future mechanistic studies may provide greater insight, especially with the use of supplementation strategies.

Despite the potential benefits of LC/KD strategies, various concerns remain. Studies examining the effect of KD on liver steatosis [125,126], glucose homeostasis [126,127], and dyslipidemia [53,128] remain controversial. Recent evidence expresses potential concerns with the LC/KD compromising bone health in rodents as several studies reported decreases in bone mineral content and bone density [129–131]. In a transgenic mouse model of neurodegeneration, KD caused acceleration of the neurodegenerative process and induced mitochondrial dysfunction, despite the promotion of mitochondrial biogenesis [132]. Furthermore, a short-term treatment of a LC/KD (60% fat, 15% CHO) failed to improve memory and learning in apparently healthy humans [133]. Depending on the dietary carbohydrate sources, LC/KD may also lead to micronutrient deficiencies [134]. Certainly,

additional longer-term studies are required to address the safety and efficacy of LC/KDs in both healthy and diseased states.

Epileptic children appear to be particularly vulnerable to potential negative side effects of the KD. Decreases in bone mineral content and bone loss have been documented [135,136]. In addition, the concern of kidney stones exists in approximately 6% of children with intractable epilepsy on the KD, which may be reduced with administration of potassium citrate [137,138]. Interestingly, recent studies have identified significant reductions in the hormone ghrelin, which may be responsible for low growth rates in epileptic children [139,140]. Future investigations should focus on the characterization of hormonal changes that may occur with KD consumption in adults.

## 8. Summary and Conclusions

For endurance athletes, the literature supports LC/KDs as an effective strategy to reduce body weight and fat mass, particularly in the period of 3–12 weeks. Limited studies demonstrate a significant improvement in exercise performance at submaximal (~60%) intensities. However, exercise performance at higher intensities may actually be impaired. For athletes concerned with anaerobic power and strength, short-term consumption of LC/KDs does not negatively affect these performance parameters but may lead to unwelcomed decreases in lean body mass or blunted skeletal muscle hypertrophy. Therefore, the literature does not support the use of LC/KD as an effective dietary strategy to increase athletic performance.

Ketone body supplements, including KS and KE, are commercially available and gaining popularity in the exercise community. However, since supplements are not evaluated or approved by the Food and Drug Administration (FDA), consumers must pay careful attention to the components of the supplements. Compared to KS, KE supplements appear to be more effective at inducing ketosis; however, there are limited studies demonstrating improvements in the exercise performance of trained athletes. Moreover, the benefits of KE supplementation in non-athletes is unknown.

Although recent research findings lend support to targeting ketone body metabolism for the treatment of cardiac dysfunction, obesity, diabetes, and exercise performance, further research is needed before dietary interventions or supplementation is implemented. Individuals who do decide to use LC/KDs or ketone body supplements should do so with caution.

**Author Contributions:** Conceptualization, S.C.K.Jr. and K.L.H.; writing—original draft preparation, K.L.H., L.E.H., and S.C.K.Jr.; writing—review, K.L.H., L.E.H., and S.C.K.Jr.; supervision, S.C.K.Jr.

**Funding:** This research received no external funding.

**Conflicts of Interest:** The authors declare no conflict of interest.

## References

1. Joshi, S.; Ostfeld, R.J.; McMacken, M. The Ketogenic Diet for Obesity and Diabetes-Enthusiasm Outpaces Evidence. *JAMA Intern. Med.* **2019**, *179*, 1163–1164. [[CrossRef](#)]
2. Cox, P.J.; Kirk, T.; Ashmore, T.; Willerton, K.; Evans, R.; Smith, A.; Murray, A.J.; Stubbs, B.; West, J.; McLure, S.W.; et al. Nutritional Ketosis Alters Fuel Preference and Thereby Endurance Performance in Athletes. *Cell Metab.* **2016**, *24*, 256–268. [[CrossRef](#)]
3. Murray, A.J.; Knight, N.S.; Cole, M.A.; Cochlin, L.E.; Carter, E.; Tchabanenko, K.; Pichulik, T.; Gulston, M.K.; Atherton, H.J.; Schroeder, M.A.; et al. Novel Ketone Diet Enhances Physical and Cognitive Performance. *FASEB J.* **2016**, *30*, 4021–4032. [[CrossRef](#)]
4. Paoli, A. Ketogenic Diet for Obesity: Friend or Foe? *Int. J. Environ. Res. Public Health* **2014**, *11*, 2092–2107. [[CrossRef](#)]
5. Veech, R.L. The Therapeutic Implications of Ketone Bodies: The Effects of Ketone Bodies in Pathological Conditions: Ketosis, Ketogenic Diet, Redox States, Insulin Resistance, and Mitochondrial Metabolism. *Prostaglandins Leukot. Essent. Fatty Acids* **2004**, *70*, 309–319. [[CrossRef](#)]
6. Kosinski, C.; Jornayvaz, F.R. Effects of Ketogenic Diets on Cardiovascular Risk Factors: Evidence from Animal and Human Studies. *Nutrients* **2017**, *9*, 517. [[CrossRef](#)]

7. Shilpa, J.; Mohan, V. Ketogenic Diets: Boon or Bane? *Indian J. Med. Res.* **2018**, *148*, 251–253. [[CrossRef](#)]
8. Krebs, H.A. The Regulation of the Release of Ketone Bodies by the Liver. *Adv. Enzyme Regul.* **1966**, *4*, 339–354. [[CrossRef](#)]
9. Aubert, G.; Martin, O.J.; Horton, J.L.; Lai, L.; Vega, R.B.; Leone, T.C.; Koves, T.; Gardell, S.J.; Kruger, M.; Hoppel, C.L.; et al. The Failing Heart Relies on Ketone Bodies as a Fuel. *Circulation* **2016**, *133*, 698–705. [[CrossRef](#)]
10. Bedi, K.C., Jr.; Snyder, N.W.; Brandimarto, J.; Aziz, M.; Mesaros, C.; Worth, A.J.; Wang, L.L.; Javaheri, A.; Blair, I.A.; Margulies, K.B.; et al. Evidence for Intramyocardial Disruption of Lipid Metabolism and Increased Myocardial Ketone Utilization in Advanced Human Heart Failure. *Circulation* **2016**, *133*, 706–716. [[CrossRef](#)]
11. Horton, J.L.; Davidson, M.T.; Kurishima, C.; Vega, R.B.; Powers, J.C.; Matsuura, T.R.; Petucci, C.; Lewandowski, E.D.; Crawford, P.A.; Muoio, D.M.; et al. The Failing Heart Utilizes 3-Hydroxybutyrate as a Metabolic Stress Defense. *JCI Insight* **2019**, *4*. [[CrossRef](#)]
12. Peters, J.P.; Van Slyke, D. *Quantitative Clinical Chemistry*, 2nd ed.; Williams & Wilkins: Baltimore, MD, USA, 1946.
13. Salway, J.G. *Metabolism at a Glance*, 3rd ed.; Blackwell Pub.: Malden, MA, USA, 2004.
14. Wentz, A.E.; d'Avignon, D.A.; Weber, M.L.; Cotter, D.G.; Doherty, J.M.; Kerns, R.; Nagarajan, R.; Reddy, N.; Sambandam, N.; Crawford, P.A. Adaptation of Myocardial Substrate Metabolism to a Ketogenic Nutrient Environment. *J. Biol. Chem.* **2010**, *285*, 24447–24456. [[CrossRef](#)]
15. Rowe, P.; O'Neill, C.; DeWitt, E.; Kolwicz, S.C., Jr. Endurance Exercise Capacity and Substrate Metabolism in Male and Female Mice. *FASEB J.* **2019**, *33*, 698.1.
16. Avogaro, A.; Crepaldi, C.; Miola, M.; Maran, A.; Pengo, V.; Tiengo, A.; del Prato, S. High Blood Ketone Body Concentration in Type 2 Non-Insulin Dependent Diabetic Patients. *J. Endocrinol. Investig.* **1996**, *19*, 99–105. [[CrossRef](#)]
17. Guerci, B.; Benichou, M.; Floriot, M.; Bohme, P.; Fougnot, S.; Franck, P.; Drouin, P. Accuracy of an Electrochemical Sensor for Measuring Capillary Blood Ketones by Fingerstick Samples During Metabolic Deterioration after Continuous Subcutaneous Insulin Infusion Interruption in Type 1 Diabetic Patients. *Diabetes Care* **2003**, *26*, 1137–1141. [[CrossRef](#)]
18. Reichard, G.A., Jr.; Owen, O.E.; Haff, A.C.; Paul, P.; Bortz, W.M. Ketone-Body Production and Oxidation in Fasting Obese Humans. *J. Clin. Investig.* **1974**, *53*, 508–515. [[CrossRef](#)]
19. Evans, M.; Cogan, K.E.; Egan, B. Metabolism of Ketone Bodies During Exercise and Training: Physiological Basis for Exogenous Supplementation. *J. Physiol.* **2017**, *595*, 2857–2871. [[CrossRef](#)]
20. Volek, J.S.; Freidenreich, D.J.; Saenz, C.; Kunces, L.J.; Creighton, B.C.; Bartley, J.M.; Davitt, P.M.; Munoz, C.X.; Anderson, J.M.; Maresh, C.M.; et al. Metabolic Characteristics of Keto-Adapted Ultra-Endurance Runners. *Metabolism* **2016**, *65*, 100–110. [[CrossRef](#)]
21. Kennedy, A.R.; Pissios, P.; Otu, H.; Roberson, R.; Xue, B.; Asakura, K.; Furukawa, N.; Marino, F.E.; Liu, F.F.; Kahn, B.B.; et al. A High-Fat, Ketogenic Diet Induces a Unique Metabolic State in Mice. *Am. J. Physiol. Endocrinol. Metab.* **2007**, *292*, E1724–E1739. [[CrossRef](#)]
22. Kolwicz, S.C., Jr.; Olson, D.P.; Marney, L.C.; Garcia-Menendez, L.; Synovec, R.E.; Tian, R. Cardiac-Specific Deletion of Acetyl Coa Carboxylase 2 Prevents Metabolic Remodeling during Pressure-Overload Hypertrophy. *Circ. Res.* **2012**, *111*, 728–738. [[CrossRef](#)]
23. Yan, J.; Young, M.E.; Cui, L.; Lopaschuk, G.D.; Liao, R.; Tian, R. Increased Glucose Uptake and Oxidation in Mouse Hearts Prevent High Fatty Acid Oxidation but Cause Cardiac Dysfunction in Diet-Induced Obesity. *Circulation* **2009**, *119*, 2818–2828. [[CrossRef](#)]
24. Halestrap, A.P.; Wilson, M.C. The Monocarboxylate Transporter Family—Role and Regulation. *IUBMB Life* **2012**, *64*, 109–119. [[CrossRef](#)]
25. Cotter, D.G.; Schugar, R.C.; Crawford, P.A. Ketone Body Metabolism and Cardiovascular Disease. *Am. J. Physiol. Heart Circ. Physiol.* **2013**, *304*, H1060–H1076. [[CrossRef](#)]
26. Karwi, Q.G.; Uddin, G.M.; Ho, K.L.; Lopaschuk, G.D. Loss of Metabolic Flexibility in the Failing Heart. *Front. Cardiovasc. Med.* **2018**, *5*, 68. [[CrossRef](#)]
27. Opie, L.H. *Heart Physiology: From Cell to Circulation*, 4th ed.; Lippincott Williams & Wilkins: Philadelphia, PA, USA, 2004.
28. Kashiwaya, Y.; King, M.T.; Veech, R.L. Substrate Signaling by Insulin: A Ketone Bodies Ratio Mimics Insulin Action in Heart. *Am. J. Cardiol.* **1997**, *80*, 50A–64A. [[CrossRef](#)]

29. Sato, K.; Kashiwaya, Y.; Keon, C.A.; Tsuchiya, N.; King, M.T.; Radda, G.K.; Chance, B.; Clarke, K.; Veech, R.L. Insulin, Ketone Bodies, and Mitochondrial Energy Transduction. *FASEB J.* **1995**, *9*, 651–658. [[CrossRef](#)]
30. Ho, K.L.; Zhang, L.; Wagg, C.; al Batran, R.; Gopal, K.; Levasseur, J.; Leone, T.; Dyck, J.R.B.; Ussher, J.R.; Muoio, D.M.; et al. Increased Ketone Body Oxidation Provides Additional Energy for the Failing Heart without Improving Cardiac Efficiency. *Cardiovasc. Res.* **2019**, *115*, 1606–1616. [[CrossRef](#)]
31. Gosmanov, A.R.; Gosmanova, E.O.; Dillard-Cannon, E. Management of Adult Diabetic Ketoacidosis. *Diabetes Metab. Syndr. Obes.* **2014**, *7*, 255–264. [[CrossRef](#)]
32. Kanikarla-Marie, P.; Jain, S.K. Hyperketonemia and Ketosis Increase the Risk of Complications in Type 1 Diabetes. *Free Radic. Biol. Med.* **2016**, *95*, 268–277. [[CrossRef](#)]
33. Lebovitz, H.E. Diabetic Ketoacidosis. *Lancet* **1995**, *345*, 767–772. [[CrossRef](#)]
34. Bhupathiraju, S.N.; Hu, F.B. Epidemiology of Obesity and Diabetes and Their Cardiovascular Complications. *Circ. Res.* **2016**, *118*, 1723–1735. [[CrossRef](#)]
35. Ryu, S.; Frith, E.; Pedisic, Z.; Kang, M.; Loprinzi, P.D. Secular Trends in the Association between Obesity and Hypertension among Adults in the United States, 1999–2014. *Eur. J. Intern. Med.* **2019**, *62*, 37–42. [[CrossRef](#)]
36. American Diabetes Association. 6. Obesity Management for the Treatment of Type 2 Diabetes. *Diabetes Care* **2016**, *39* (Suppl. 1), S47–S51. [[CrossRef](#)]
37. Ortega, F.B.; Lavie, C.J.; Blair, S.N. Obesity and Cardiovascular Disease. *Circ. Res.* **2016**, *118*, 1752–1770. [[CrossRef](#)]
38. Kuchkuntla, A.R.; Limketkai, B.; Nanda, S.; Hurt, R.T.; Mundi, M.S. Fad Diets: Hype or Hope? *Curr. Nutr. Rep.* **2018**, *7*, 310–323. [[CrossRef](#)]
39. Wilder, R.M. The Effect of Ketonemia on the Course of Epilepsy. *Mayo Clin. Bull.* **1921**, *2*, 307–308.
40. Woodyatt, R.T. Objects and Methods of Diet Adjustment in Diabetics. *Arch. Intern. Med.* **1921**, *28*, 125–141. [[CrossRef](#)]
41. Peterman, M.G. The Ketogenic Diet in Epilepsy. *JAMA* **1925**, *84*, 1979–1983. [[CrossRef](#)]
42. Wheless, J.W. History of the Ketogenic Diet. *Epilepsia* **2008**, *49* (Suppl. 8), 3–5. [[CrossRef](#)]
43. Scholl-Burgi, S.; Holler, A.; Pichler, K.; Michel, M.; Haberlandt, E.; Karall, D. Ketogenic Diets in Patients with Inherited Metabolic Disorders. *J. Inherit. Metab. Dis.* **2015**, *38*, 765–773. [[CrossRef](#)]
44. Shai, I.; Schwarzfuchs, D.; Henkin, Y.; Shahar, D.R.; Witkow, S.; Greenberg, I.; Golan, R.; Fraser, D.; Bolotin, A.; Vardi, H.; et al. Group Dietary Intervention Randomized Controlled Trial. Weight Loss with a Low-Carbohydrate, Mediterranean, or Low-Fat Diet. *N. Engl. J. Med.* **2008**, *359*, 229–241. [[CrossRef](#)]
45. Sondike, S.B.; Copperman, N.; Jacobson, M.S. Effects of a Low-Carbohydrate Diet on Weight Loss and Cardiovascular Risk Factor in Overweight Adolescents. *J. Pediatr.* **2003**, *142*, 253–258. [[CrossRef](#)]
46. Dansinger, M.L.; Gleason, J.A.; Griffith, J.L.; Selker, H.P.; Schaefer, E.J. Comparison of the Atkins, Ornish, Weight Watchers, and Zone Diets for Weight Loss and Heart Disease Risk Reduction: A Randomized Trial. *JAMA* **2005**, *293*, 43–53. [[CrossRef](#)]
47. McAuley, K.A.; Hopkins, C.M.; Smith, K.J.; McLay, R.T.; Williams, S.M.; Taylor, R.W.; Mann, J.I. Comparison of High-Fat and High-Protein Diets with a High-Carbohydrate Diet in Insulin-Resistant Obese Women. *Diabetologia* **2005**, *48*, 8–16. [[CrossRef](#)]
48. De Souza, R.J.; Bray, G.A.; Carey, V.J.; Hall, K.D.; LeBoff, M.S.; Loria, C.M.; Laranjo, N.M.; Sacks, F.M.; Smith, S.R. Effects of 4 Weight-Loss Diets Differing in Fat, Protein, and Carbohydrate on Fat Mass, Lean Mass, Visceral Adipose Tissue, and Hepatic Fat: Results from the Pounds Lost Trial. *Am. J. Clin. Nutr.* **2012**, *95*, 614–625. [[CrossRef](#)]
49. Sacks, F.M.; Bray, G.A.; Carey, V.J.; Smith, S.R.; Ryan, D.H.; Anton, S.D.; McManus, K.; Champagne, C.M.; Bishop, L.M.; Laranjo, N.; et al. Comparison of Weight-Loss Diets with Different Compositions of Fat, Protein, and Carbohydrates. *N. Engl. J. Med.* **2009**, *360*, 859–873. [[CrossRef](#)]
50. Foster, G.D.; Wyatt, H.R.; Hill, J.O.; Makris, A.P.; Rosenbaum, D.L.; Brill, C.; Stein, R.I.; Mohammed, B.S.; Miller, B.; Rader, D.J.; et al. Weight and Metabolic Outcomes after 2 Years on a Low-Carbohydrate Versus Low-Fat Diet: A Randomized Trial. *Ann. Intern. Med.* **2010**, *153*, 147–157. [[CrossRef](#)]
51. Bueno, N.B.; de Melo, I.S.; de Oliveira, S.L.; Ataíde, T.D. Very-Low-Carbohydrate Ketogenic Diet V. Low-Fat Diet for Long-Term Weight Loss: A Meta-Analysis of Randomised Controlled Trials. *Br. J. Nutr.* **2013**, *110*, 1178–1187. [[CrossRef](#)]

52. Badman, M.K.; Kennedy, A.R.; Adams, A.C.; Pissios, P.; Maratos-Flier, E. A Very Low Carbohydrate Ketogenic Diet Improves Glucose Tolerance in Ob/Ob Mice Independently of Weight Loss. *Am. J. Physiol. Endocrinol. Metab.* **2009**, *297*, E1197–E1204. [[CrossRef](#)]
53. Ellenbroek, J.H.; van Dijk, L.; Tons, H.A.; Rabelink, T.J.; Carlotti, F.; Ballieux, B.E.; de Koning, E.J. Long-Term Ketogenic Diet Causes Glucose Intolerance and Reduced Beta- and Alpha-Cell Mass but No Weight Loss in Mice. *Am. J. Physiol. Endocrinol. Metab.* **2014**, *306*, E552–E558. [[CrossRef](#)]
54. McArdle, W.D.; Katch, F.I.; Katch, V.L. *Essentials of Exercise Physiology*, 5th ed.; Wolters Kluwer: Philadelphia, PA, USA, 2016.
55. Greenberg, C.C.; Jurczak, M.J.; Danos, A.M.; Brady, M.J. Glycogen Branches Out: New Perspectives on the Role of Glycogen Metabolism in the Integration of Metabolic Pathways. *Am. J. Physiol. Endocrinol. Metab.* **2006**, *291*, E1–E8. [[CrossRef](#)]
56. Stainsby, W.N.; Barclay, J.K. Exercise Metabolism: O<sub>2</sub> Deficit, Steady Level O<sub>2</sub> Uptake and O<sub>2</sub> Uptake for Recovery. *Med. Sci. Sports* **1970**, *2*, 177–181.
57. Arner, P.; Kriegholm, E.; Engfeldt, P.; Bolinder, J. Adrenergic Regulation of Lipolysis in Situ at Rest and During Exercise. *J. Clin. Investig.* **1990**, *85*, 893–898. [[CrossRef](#)]
58. Stanley, W.C. Myocardial Lactate Metabolism During Exercise. *Med. Sci. Sports Exerc.* **1991**, *23*, 920–924. [[CrossRef](#)]
59. Egan, B.; Zierath, J.R. Exercise Metabolism and the Molecular Regulation of Skeletal Muscle Adaptation. *Cell Metab.* **2013**, *17*, 162–184. [[CrossRef](#)]
60. Burke, L.M.; Ross, M.L.; Garvican-Lewis, L.A.; Welvaert, M.; Heikura, I.A.; Forbes, S.G.; Mirtschin, J.G.; Cato, L.E.; Strobel, N.; Sharma, A.P.; et al. Low Carbohydrate, High Fat Diet Impairs Exercise Economy and Negates the Performance Benefit from Intensified Training in Elite Race Walkers. *J. Physiol.* **2017**, *595*, 2785–2807. [[CrossRef](#)]
61. Carr, A.J.; Sharma, A.P.; Ross, M.L.; Welvaert, M.; Slater, G.J.; Burke, L.M. Chronic Ketogenic Low Carbohydrate High Fat Diet Has Minimal Effects on Acid-Base Status in Elite Athletes. *Nutrients* **2018**, *10*, 236. [[CrossRef](#)]
62. Cipryan, L.; Plews, D.J.; Ferretti, A.; Maffetone, P.B.; Laursen, P.B. Effects of a 4-Week Very Low-Carbohydrate Diet on High-Intensity Interval Training Responses. *J. Sports Sci. Med.* **2018**, *17*, 259–268.
63. Durkalec-Michalski, K.; Nowaczyk, P.M.; Siedzik, K. Effect of a Four-Week Ketogenic Diet on Exercise Metabolism in Crossfit-Trained Athletes. *J. Int. Soc. Sports Nutr.* **2019**, *16*, 16. [[CrossRef](#)]
64. Kephart, W.C.; Pledge, C.D.; Roberson, P.A.; Mumford, P.W.; Romero, M.A.; Mobley, C.B.; Martin, J.S.; Young, K.C.; Lowery, R.P.; Wilson, J.M.; et al. The Three-Month Effects of a Ketogenic Diet on Body Composition, Blood Parameters, and Performance Metrics in Crossfit Trainees: A Pilot Study. *Sports (Basel)* **2018**, *6*, 1. [[CrossRef](#)]
65. McSwiney, F.T.; Wardrop, B.; Hyde, P.N.; Lafountain, R.A.; Volek, J.S.; Doyle, L. Keto-Adaptation Enhances Exercise Performance and Body Composition Responses to Training in Endurance Athletes. *Metabolism* **2018**, *81*, 25–34. [[CrossRef](#)]
66. O’Neal, E.K.; Smith, A.F.; Heatherly, A.J.; Killen, L.G.; Waldman, H.S.; Hollingsworth, A.; Koh, Y. Effects of a 3-Week High-Fat-Low-Carbohydrate Diet on Lipid and Glucose Profiles in Experienced, Middle-Age Male Runners. *Int. J. Exerc. Sci.* **2019**, *12*, 786–799.
67. Shaw, D.M.; Merien, F.; Braakhuis, A.; Maunder, E.; Dulson, D.K. Effect of a Ketogenic Diet on Submaximal Exercise Capacity and Efficiency in Runners. *Med. Sci. Sports Exerc.* **2019**. [[CrossRef](#)]
68. Zajac, A.; Poprzecki, S.; Maszczyk, A.; Czuba, M.; Michalczyk, M.; Zydek, G. The Effects of a Ketogenic Diet on Exercise Metabolism and Physical Performance in Off-Road Cyclists. *Nutrients* **2014**, *6*, 2493–2508. [[CrossRef](#)]
69. Zinn, C.; Wood, M.; Williden, M.; Chatterton, S.; Maunder, E. Ketogenic Diet Benefits Body Composition and Well-Being but Not Performance in a Pilot Case Study of New Zealand Endurance Athletes. *J. Int. Soc. Sports Nutr.* **2017**, *14*, 22. [[CrossRef](#)]
70. Brinkworth, G.D.; Noakes, M.; Clifton, P.M.; Buckley, J.D. Effects of a Low Carbohydrate Weight Loss Diet on Exercise Capacity and Tolerance in Obese Subjects. *Obesity (Silver Spring)* **2009**, *17*, 1916–1923. [[CrossRef](#)]
71. Walberg, J.L.; Ruiz, V.K.; Tarlton, S.L.; Hinkle, D.E.; Thye, F.W. Exercise Capacity and Nitrogen Loss During a High or Low Carbohydrate Diet. *Med. Sci. Sports Exerc.* **1988**, *20*, 34–43. [[CrossRef](#)]

72. Phinney, S.D.; Horton, E.S.; Sims, E.A.; Hanson, J.S.; Danforth, E., Jr.; LaGrange, B.M. Capacity for Moderate Exercise in Obese Subjects after Adaptation to a Hypocaloric, Ketogenic Diet. *J. Clin. Investig.* **1980**, *66*, 1152–1161. [[CrossRef](#)]
73. White, A.M.; Johnston, C.S.; Swan, P.D.; Tjonn, S.L.; Sears, B. Blood Ketones Are Directly Related to Fatigue and Perceived Effort During Exercise in Overweight Adults Adhering to Low-Carbohydrate Diets for Weight Loss: A Pilot Study. *J. Am. Diet. Assoc.* **2007**, *107*, 1792–1796. [[CrossRef](#)]
74. Wycherley, T.P.; Buckley, J.D.; Noakes, M.; Clifton, P.M.; Brinkworth, G.D. Long-Term Effects of a Very Low-Carbohydrate Weight Loss Diet on Exercise Capacity and Tolerance in Overweight and Obese Adults. *J. Am. Coll. Nutr.* **2014**, *33*, 267–273. [[CrossRef](#)]
75. Phinney, S.D. Ketogenic Diets and Physical Performance. *Nutr. Metab. (Lond.)* **2004**, *1*, 2. [[CrossRef](#)]
76. Holland, A.M.; Kephart, W.C.; Mumford, P.W.; Mobley, C.B.; Lowery, R.P.; Shake, J.J.; Patel, R.K.; Healy, J.C.; McCullough, D.J.; Kluess, H.A.; et al. Effects of a Ketogenic Diet on Adipose Tissue, Liver, and Serum Biomarkers in Sedentary Rats and Rats That Exercised Via Resisted Voluntary Wheel Running. *Am. J. Physiol. Regul. Integr. Comp. Physiol.* **2016**, *311*, R337–R351. [[CrossRef](#)]
77. Huang, Q.; Ma, S.; Tominaga, T.; Suzuki, K.; Liu, C. An 8-Week, Low Carbohydrate, High Fat, Ketogenic Diet Enhanced Exhaustive Exercise Capacity in Mice Part 2: Effect on Fatigue Recovery, Post-Exercise Biomarkers and Anti-Oxidation Capacity. *Nutrients* **2018**, *10*, 1339. [[CrossRef](#)]
78. Ma, S.; Huang, Q.; Yada, K.; Liu, C.; Suzuki, K. An 8-Week Ketogenic Low Carbohydrate, High Fat Diet Enhanced Exhaustive Exercise Capacity in Mice. *Nutrients* **2018**, *10*, 673. [[CrossRef](#)]
79. Miller, W.C.; Bryce, G.R.; Conlee, R.K. Adaptations to a High-Fat Diet That Increase Exercise Endurance in Male Rats. *J. Appl. Physiol. Respir. Environ. Exerc. Physiol.* **1984**, *56*, 78–83. [[CrossRef](#)]
80. Nilsson, J.; Ericsson, M.; Joibari, M.M.; Anderson, F.; Carlsson, L.; Nilsson, S.K.; Sjodin, A.; Buren, J. A Low-Carbohydrate High-Fat Diet Decreases Lean Mass and Impairs Cardiac Function in Pair-Fed Female C57bl/6j Mice. *Nutr. Metab. (Lond.)* **2016**, *13*, 79. [[CrossRef](#)]
81. Newman, J.C.; Covarrubias, A.J.; Zhao, M.; Yu, X.; Gut, P.; Ng, C.P.; Huang, Y.; Haldar, S.; Verdin, E. Ketogenic Diet Reduces Midlife Mortality and Improves Memory in Aging Mice. *Cell Metab.* **2017**, *26*, 547–557. [[CrossRef](#)]
82. Parry, H.A.; Kephart, W.C.; Mumford, P.W.; Romero, M.A.; Mobley, C.B.; Zhang, Y.; Roberts, M.D.; Kavazis, A.N. Ketogenic Diet Increases Mitochondria Volume in the Liver and Skeletal Muscle without Altering Oxidative Stress Markers in Rats. *Heliyon* **2018**, *4*, e00975. [[CrossRef](#)]
83. Gregory, R.M.; Hamdan, H.; Torisky, D.M.; Akers, J.D. A Low-Carbohydrate Ketogenic Diet Combined with 6-Weeks of Crossfit Training Improves Body Composition and Performance. *Int. J. Sports Exerc. Med.* **2017**, *3*, 54. [[CrossRef](#)]
84. Wilson, J.M.; Lowery, R.P.; Roberts, M.D.; Sharp, M.H.; Joy, J.M.; Shields, K.A.; Partl, J.; Volek, J.S.; D’Agostino, D. The Effects of Ketogenic Dieting on Body Composition, Strength, Power, and Hormonal Profiles in Resistance Training Males. *J. Strength Cond. Res.* **2017**. [[CrossRef](#)]
85. Paoli, A.; Grimaldi, K.; D’Agostino, D.; Cenci, L.; Moro, T.; Bianco, A.; Palma, A. Ketogenic Diet Does Not Affect Strength Performance in Elite Artistic Gymnasts. *J. Int. Soc. Sports Nutr.* **2012**, *9*, 34. [[CrossRef](#)]
86. Greene, D.A.; Varley, B.J.; Hartwig, T.B.; Chapman, P.; Rigney, M. A Low-Carbohydrate Ketogenic Diet Reduces Body Mass without Compromising Performance in Powerlifting and Olympic Weightlifting Athletes. *J. Strength Cond. Res.* **2018**, *32*, 3373–3382. [[CrossRef](#)]
87. Vargas, S.; Romance, R.; Petro, J.L.; Bonilla, D.A.; Galancho, I.; Espinar, S.; Kreider, R.B.; Benítez-Porres, J. Efficacy of Ketogenic Diet on Body Composition During Resistance Training in Trained Men: A Randomized Controlled Trial. *J. Int. Soc. Sports Nutr.* **2018**, *15*, 31. [[CrossRef](#)]
88. Scott, B.E.; Laursen, P.B.; James, L.J.; Boxer, B.; Chandler, Z.; Lam, E.; Gascoyne, T.; Messenger, J.; Mears, S.A. The Effect of 1,3-Butanediol and Carbohydrate Supplementation on Running Performance. *J. Sci. Med. Sport* **2019**, *22*, 702–706. [[CrossRef](#)]
89. Harvey, C.J.d.C.; Schofield, G.M.; Williden, M.; McQuillan, J.A. The Effect of Medium Chain Triglycerides on Time to Nutritional Ketosis and Symptoms of Keto-Induction in Healthy Adults: A Randomised Controlled Clinical Trial. *J. Nutr. Metab.* **2018**, *2018*, 2630565. [[CrossRef](#)]
90. Dearlove, D.J.; Faull, O.K.; Rolls, E.; Clarke, K.; Cox, P.J. Nutritional Ketoacidosis During Incremental Exercise in Healthy Athletes. *Front. Physiol.* **2019**, *10*, 290. [[CrossRef](#)]

91. Evans, M.; Egan, B. Intermittent Running and Cognitive Performance after Ketone Ester Ingestion. *Med. Sci. Sports Exerc.* **2018**, *50*, 2330–2338. [[CrossRef](#)]
92. Leckey, J.J.; Ross, M.L.; Quod, M.; Hawley, J.A.; Burke, L.M. Ketone Diester Ingestion Impairs Time-Trial Performance in Professional Cyclists. *Front. Physiol.* **2017**, *8*, 806. [[CrossRef](#)]
93. Kesl, S.L.; Poff, A.M.; Ward, N.P.; Fiorelli, T.N.; Ari, C.; van Putten, A.J.; Sherwood, J.W.; Arnold, P.; D'Agostino, D.P. Effects of Exogenous Ketone Supplementation on Blood Ketone, Glucose, Triglyceride, and Lipoprotein Levels in Sprague-Dawley Rats. *Nutr. Metab. (Lond.)* **2016**, *13*, 9. [[CrossRef](#)]
94. Stubbs, B.J.; Cox, P.J.; Evans, R.D.; Santer, P.; Miller, J.J.; Faull, O.K.; Magor-Elliott, S.; Hiyama, S.; Stirling, M.; Clarke, K. On the Metabolism of Exogenous Ketones in Humans. *Front. Physiol.* **2017**, *8*, 848. [[CrossRef](#)]
95. Tate, R.L.; Mehlman, M.A.; Tobin, R.B. Metabolic Fate of 1,3-Butanediol in the Rat: Conversion to  $\beta$ -Hydroxybutyrate. *J. Nutr.* **1971**, *101*, 1719–1726. [[CrossRef](#)]
96. Clarke, K.; Tchabanenko, K.; Pawlosky, R.; Carter, E.; King, M.T.; Musa-Veloso, K.; Ho, M.; Roberts, A.; Robertson, J.; Vanitallie, T.B.; et al. Kinetics, Safety and Tolerability of (R)-3-Hydroxybutyl (R)-3-Hydroxybutyrate in Healthy Adult Subjects. *Regul. Toxicol. Pharmacol.* **2012**, *63*, 401–408. [[CrossRef](#)]
97. Kolwicz, S.C., Jr.; Purohit, S.; Tian, R. Cardiac Metabolism and Its Interactions with Contraction, Growth, and Survival of Cardiomyocytes. *Circ. Res.* **2013**, *113*, 603–616. [[CrossRef](#)]
98. Kolwicz, S.C., Jr. An “Exercise” in Cardiac Metabolism. *Front. Cardiovasc. Med.* **2018**, *5*, 66. [[CrossRef](#)]
99. Kolwicz, S.C., Jr.; Tian, R. Glucose Metabolism and Cardiac Hypertrophy. *Cardiovasc. Res.* **2011**, *90*, 194–201. [[CrossRef](#)]
100. Lopaschuk, G.D.; Ussher, J.R. Evolving Concepts of Myocardial Energy Metabolism: More Than Just Fats and Carbohydrates. *Circ. Res.* **2016**, *119*, 1173–1176. [[CrossRef](#)]
101. Arnett, D.K.; Blumenthal, R.S.; Albert, M.A.; Buroker, A.B.; Goldberger, Z.D.; Hahn, E.J.; Himmelfarb, C.D.; Khera, A.; Lloyd-Jones, D.; McEvoy, J.W.; et al. 2019 Acc/Aha Guideline on the Primary Prevention of Cardiovascular Disease. *Circulation* **2019**. [[CrossRef](#)]
102. Fillmore, N.; Levasseur, J.L.; Fukushima, A.; Wagg, C.S.; Wang, W.; Dyck, J.R.B.; Lopaschuk, G.D. Uncoupling of Glycolysis from Glucose Oxidation Accompanies the Development of Heart Failure with Preserved Ejection Fraction. *Mol. Med.* **2018**, *24*, 3. [[CrossRef](#)]
103. Abdurrachim, D.; Teo, X.Q.; Woo, C.C.; Chan, W.X.; Lalic, J.; Lam, C.S.P.; Lee, P.T.H. Empagliflozin Reduces Myocardial Ketone Utilization While Preserving Glucose Utilization in Diabetic Hypertensive Heart Disease: A Hyperpolarized ( $^{13}$ C) Magnetic Resonance Spectroscopy Study. *Diabetes Obes. Metab.* **2019**, *21*, 357–365. [[CrossRef](#)]
104. Kolwicz, S.C., Jr.; Airhart, S.; Tian, R. Ketones Step to the Plate: A Game Changer for Metabolic Remodeling in Heart Failure? *Circulation* **2016**, *133*, 689–691. [[CrossRef](#)]
105. Al-Zaid, N.S.; Dashti, H.M.; Mathew, T.C.; Juggi, J.S. Low Carbohydrate Ketogenic Diet Enhances Cardiac Tolerance to Global Ischaemia. *Acta Cardiol.* **2007**, *62*, 381–389. [[CrossRef](#)]
106. Liu, J.; Wang, P.; Douglas, S.L.; Tate, J.M.; Sham, S.; Lloyd, S.G. Impact of High-Fat, Low-Carbohydrate Diet on Myocardial Substrate Oxidation, Insulin Sensitivity, and Cardiac Function after Ischemia-Reperfusion. *Am. J. Physiol. Heart Circ. Physiol.* **2016**, *311*, H1–H10. [[CrossRef](#)]
107. Wang, P.; Tate, J.M.; Lloyd, S.G. Low Carbohydrate Diet Decreases Myocardial Insulin Signaling and Increases Susceptibility to Myocardial Ischemia. *Life Sci.* **2008**, *83*, 836–844. [[CrossRef](#)]
108. Partsalaki, I.; Karvela, A.; Spiliotis, B.E. Metabolic Impact of a Ketogenic Diet Compared to a Hypocaloric Diet in Obese Children and Adolescents. *J. Pediatr. Endocrinol. Metab.* **2012**, *25*, 697–704. [[CrossRef](#)]
109. Samaha, F.F.; Iqbal, N.; Seshadri, P.; Chicano, K.L.; Daily, D.A.; McGrory, J.; Williams, T.; Williams, M.; Gracely, E.J.; Stern, L. A Low-Carbohydrate as Compared with a Low-Fat Diet in Severe Obesity. *N. Engl. J. Med.* **2003**, *348*, 2074–2081. [[CrossRef](#)]
110. Van der Auwera, I.; Wera, S.; van Leuven, F.; Henderson, S.T. A Ketogenic Diet Reduces Amyloid Beta 40 and 42 in a Mouse Model of Alzheimer’s Disease. *Nutr. Metab. (Lond.)* **2005**, *2*, 28. [[CrossRef](#)]
111. Vanitallie, T.B.; Nonas, C.; di Rocco, A.; Boyar, K.; Hyams, K.; Heymsfield, S.B. Treatment of Parkinson Disease with Diet-Induced Hyperketonemia: A Feasibility Study. *Neurology* **2005**, *64*, 728–730. [[CrossRef](#)]
112. Villeneuve, N.; Pinton, F.; Buisson, B.; Dulac, O.; Chiron, C.; Nabbout, R. The Ketogenic Diet Improves Recently Worsened Focal Epilepsy. *Dev. Med. Child Neurol.* **2009**, *51*, 276–281. [[CrossRef](#)]
113. Gibas, M.K.; Gibas, K.J. Induced and Controlled Dietary Ketosis as a Regulator of Obesity and Metabolic Syndrome Pathologies. *Diabetes Metab. Syndr.* **2017**, *11* (Suppl. 1), S385–S390. [[CrossRef](#)]

114. Goday, A.; Bellido, D.; Sajoux, I.; Crujeiras, A.B.; Burguera, B.; Garcia-Luna, P.P.; Oleaga, A.; Moreno, B.; Casanueva, F.F. Short-Term Safety, Tolerability and Efficacy of a Very Low-Calorie-Ketogenic Diet Interventional Weight Loss Program Versus Hypocaloric Diet in Patients with Type 2 Diabetes Mellitus. *Nutr. Diabetes* **2016**, *6*, e230. [[CrossRef](#)]
115. Brehm, B.J.; Seeley, R.J.; Daniels, S.R.; D'Alessio, D.A. A Randomized Trial Comparing a Very Low Carbohydrate Diet and a Calorie-Restricted Low Fat Diet on Body Weight and Cardiovascular Risk Factors in Healthy Women. *J. Clin. Endocrinol. Metab.* **2003**, *88*, 1617–1623. [[CrossRef](#)]
116. Nordmann, A.J.; Nordmann, A.; Briel, M.; Keller, U.; Yancy, W.S., Jr.; Brehm, B.J.; Bucher, H.C. Effects of Low-Carbohydrate Vs Low-Fat Diets on Weight Loss and Cardiovascular Risk Factors: A Meta-Analysis of Randomized Controlled Trials. *Arch. Intern. Med.* **2006**, *166*, 285–293. [[CrossRef](#)]
117. Ho, V.W.; Leung, K.; Hsu, A.; Luk, B.; Lai, J.; Shen, S.Y.; Minchinton, A.I.; Waterhouse, D.; Bally, M.B.; Lin, W.; et al. A Low Carbohydrate, High Protein Diet Slows Tumor Growth and Prevents Cancer Initiation. *Cancer Res.* **2011**, *71*, 4484–4493. [[CrossRef](#)]
118. Otto, C.; Kaemmerer, U.; Illert, B.; Muehling, B.; Pfetzer, N.; Wittig, R.; Voelker, H.U.; Thiede, A.; Coy, J.F. Growth of Human Gastric Cancer Cells in Nude Mice Is Delayed by a Ketogenic Diet Supplemented with Omega-3 Fatty Acids and Medium-Chain Triglycerides. *BMC Cancer* **2008**, *8*, 122. [[CrossRef](#)]
119. Roberts, M.N.; Wallace, M.A.; Tomilov, A.A.; Zhou, Z.; Marcotte, G.R.; Tran, D.; Perez, G.; Gutierrez-Casado, E.; Koike, S.; Knotts, T.A.; et al. A Ketogenic Diet Extends Longevity and Healthspan in Adult Mice. *Cell Metab.* **2017**, *26*, 539–546. [[CrossRef](#)]
120. Krikorian, R.; Shidler, M.D.; Dangelo, K.; Couch, S.C.; Benoit, S.C.; Clegg, D.J. Dietary Ketosis Enhances Memory in Mild Cognitive Impairment. *Neurobiol. Aging* **2012**, *33*, 425.e19–425.e27. [[CrossRef](#)]
121. Ahola-Erkila, S.; Carroll, C.J.; Peltola-Mjosund, K.; Tulkki, V.; Mattila, I.; Seppanen-Laakso, T.; Oresic, M.; Tyynismaa, H.; Suomalainen, A. Ketogenic Diet Slows Down Mitochondrial Myopathy Progression in Mice. *Hum. Mol. Genet.* **2010**, *19*, 1974–1984. [[CrossRef](#)]
122. Bough, K.J.; Wetherington, J.; Hassel, B.; Pare, J.F.; Gawryluk, J.W.; Greene, J.G.; Shaw, R.; Smith, Y.; Geiger, J.D.; Dingledine, R.J. Mitochondrial Biogenesis in the Anticonvulsant Mechanism of the Ketogenic Diet. *Ann. Neurol.* **2006**, *60*, 223–235. [[CrossRef](#)]
123. Garcia-Roves, P.; Huss, J.M.; Han, D.H.; Hancock, C.R.; Iglesias-Gutierrez, E.; Chen, M.; Holloszy, J.O. Raising Plasma Fatty Acid Concentration Induces Increased Biogenesis of Mitochondria in Skeletal Muscle. *Proc. Natl. Acad. Sci. USA* **2007**, *104*, 10709–10713. [[CrossRef](#)]
124. Santra, S.; Gilkerson, R.W.; Davidson, M.; Schon, E.A. Ketogenic Treatment Reduces Deleted Mitochondrial Dnas in Cultured Human Cells. *Ann. Neurol.* **2004**, *56*, 662–669. [[CrossRef](#)]
125. Browning, J.D.; Baker, J.A.; Rogers, T.; Davis, J.; Satapati, S.; Burgess, S.C. Short-Term Weight Loss and Hepatic Triglyceride Reduction: Evidence of a Metabolic Advantage with Dietary Carbohydrate Restriction. *Am. J. Clin. Nutr.* **2011**, *93*, 1048–1052. [[CrossRef](#)]
126. Garbow, J.R.; Doherty, J.M.; Schugar, R.C.; Travers, S.; Weber, M.L.; Wentz, A.E.; Ezenwajiaku, N.; Cotter, D.G.; Brunt, E.M.; Crawford, P.A. Hepatic Steatosis, Inflammation, and Er Stress in Mice Maintained Long Term on a Very Low-Carbohydrate Ketogenic Diet. *Am. J. Physiol. Gastrointest. Liver Physiol.* **2011**, *300*, G956–G967. [[CrossRef](#)]
127. De Koning, L.; Fung, T.T.; Liao, X.; Chiuve, S.E.; Rimm, E.B.; Willett, W.C.; Spiegelman, D.; Hu, F.B. Low-Carbohydrate Diet Scores and Risk of Type 2 Diabetes in Men. *Am. J. Clin. Nutr.* **2011**, *93*, 844–850. [[CrossRef](#)]
128. Dashti, H.M.; Al-Zaid, N.S.; Mathew, T.C.; Al-Mousawi, M.; Talib, H.; Asfar, S.K.; Behbahani, A.I. Long Term Effects of Ketogenic Diet in Obese Subjects with High Cholesterol Level. *Mol. Cell. Biochem.* **2006**, *286*, 1–9. [[CrossRef](#)]
129. Ding, J.; Xu, X.; Wu, X.; Huang, Z.; Kong, G.; Liu, J.; Huang, Z.; Liu, Q.; Li, R.; Yang, Z.; et al. Bone Loss and Biomechanical Reduction of Appendicular and Axial Bones under Ketogenic Diet in Rats. *Exp. Ther. Med.* **2019**, *17*, 2503–2510. [[CrossRef](#)]
130. Xu, X.; Ding, J.; Wu, X.; Huang, Z.; Kong, G.; Liu, Q.; Yang, Z.; Huang, Z.; Zhu, Q. Bone Microstructure and Metabolism Changes under the Combined Intervention of Ketogenic Diet with Intermittent Fasting: An In Vivo Study of Rats. *Exp. Anim.* **2019**, *68*, 371–380. [[CrossRef](#)]



131. Wu, X.; Huang, Z.; Wang, X.; Fu, Z.; Liu, J.; Huang, Z.; Kong, G.; Xu, X.; Ding, J.; Zhu, Q. Ketogenic Diet Compromises Both Cancellous and Cortical Bone Mass in Mice. *Calcif. Tissue Int.* **2017**, *101*, 412–421. [[CrossRef](#)]
132. Lauritzen, K.H.; Hasan-Olive, M.M.; Regnell, C.E.; Kleppa, L.; Scheibye-Knudsen, M.; Gjedde, A.; Klungland, A.; Bohr, V.A.; Storm-Mathisen, J.; Bergersen, L.H. A Ketogenic Diet Accelerates Neurodegeneration in Mice with Induced Mitochondrial DNA Toxicity in the Forebrain. *Neurobiol. Aging* **2016**, *48*, 34–47. [[CrossRef](#)]
133. Iacovides, S.; Goble, D.; Paterson, B.; Meiring, R.M. Three Consecutive Weeks of Nutritional Ketosis Has No Effect on Cognitive Function, Sleep, and Mood Compared with a High-Carbohydrate, Low-Fat Diet in Healthy Individuals: A Randomized, Crossover, Controlled Trial. *Am. J. Clin. Nutr.* **2019**, *110*, 349–357. [[CrossRef](#)]
134. Calton, J.B. Prevalence of Micronutrient Deficiency in Popular Diet Plans. *J. Int. Soc. Sports Nutr.* **2010**, *7*, 24. [[CrossRef](#)]
135. Simm, P.J.; Bicknell-Royle, J.; Lawrie, J.; Nation, J.; Draffin, K.; Stewart, K.G.; Cameron, F.J.; Scheffer, I.E.; Mackay, M.T. The Effect of the Ketogenic Diet on the Developing Skeleton. *Epilepsy Res.* **2017**, *136*, 62–66. [[CrossRef](#)] [[PubMed](#)]
136. Bergqvist, A.G.; Schall, J.I.; Stallings, V.A.; Zemel, B.S. Progressive Bone Mineral Content Loss in Children with Intractable Epilepsy Treated with the Ketogenic Diet. *Am. J. Clin. Nutr.* **2008**, *88*, 1678–1684. [[CrossRef](#)] [[PubMed](#)]
137. McNally, M.A.; Pyzik, P.L.; Rubenstein, J.E.; Hamdy, R.F.; Kossoff, E.H. Empiric Use of Potassium Citrate Reduces Kidney-Stone Incidence with the Ketogenic Diet. *Pediatrics* **2009**, *124*, e300–e304. [[CrossRef](#)] [[PubMed](#)]
138. Sampath, A.; Kossoff, E.H.; Furth, S.L.; Pyzik, P.L.; Vining, E.P. Kidney Stones and the Ketogenic Diet: Risk Factors and Prevention. *J. Child Neurol.* **2007**, *22*, 375–378. [[CrossRef](#)] [[PubMed](#)]
139. Marchio, M.; Roli, L.; Giordano, C.; Trenti, T.; Guerra, A.; Biagini, G. Decreased Ghrelin and Des-Acyl Ghrelin Plasma Levels in Patients Affected by Pharmacoresistant Epilepsy and Maintained on the Ketogenic Diet. *Clin. Nutr.* **2019**, *38*, 954–957. [[CrossRef](#)] [[PubMed](#)]
140. Marchio, M.; Roli, L.; Lucchi, C.; Costa, A.M.; Borghi, M.; Iughetti, L.; Trenti, T.; Guerra, A.; Biagini, G. Ghrelin Plasma Levels after 1 Year of Ketogenic Diet in Children with Refractory Epilepsy. *Front Nutr.* **2019**, *6*, 112. [[CrossRef](#)] [[PubMed](#)]



© 2019 by the authors. Licensee MDPI, Basel, Switzerland. This article is an open access article distributed under the terms and conditions of the Creative Commons Attribution (CC BY) license (<http://creativecommons.org/licenses/by/4.0/>).