

East Tennessee State University

## Digital Commons @ East Tennessee State University

---

ETSU Yearbooks

University Archives

---

1942

### The Buccaneer (1942)

East Tennessee State University

Follow this and additional works at: <https://dc.etsu.edu/yearbooks>



Part of the [Higher Education Commons](#)

---

#### Recommended Citation

*The Buccaneer (1942)*, Archives of Appalachia, East Tennessee State University  
<https://dc.etsu.edu/yearbooks/25>

This Book is brought to you for free and open access by the University Archives at Digital Commons @ East Tennessee State University. It has been accepted for inclusion in ETSU Yearbooks by an authorized administrator of Digital Commons @ East Tennessee State University. For more information, please contact [digilib@etsu.edu](mailto:digilib@etsu.edu).



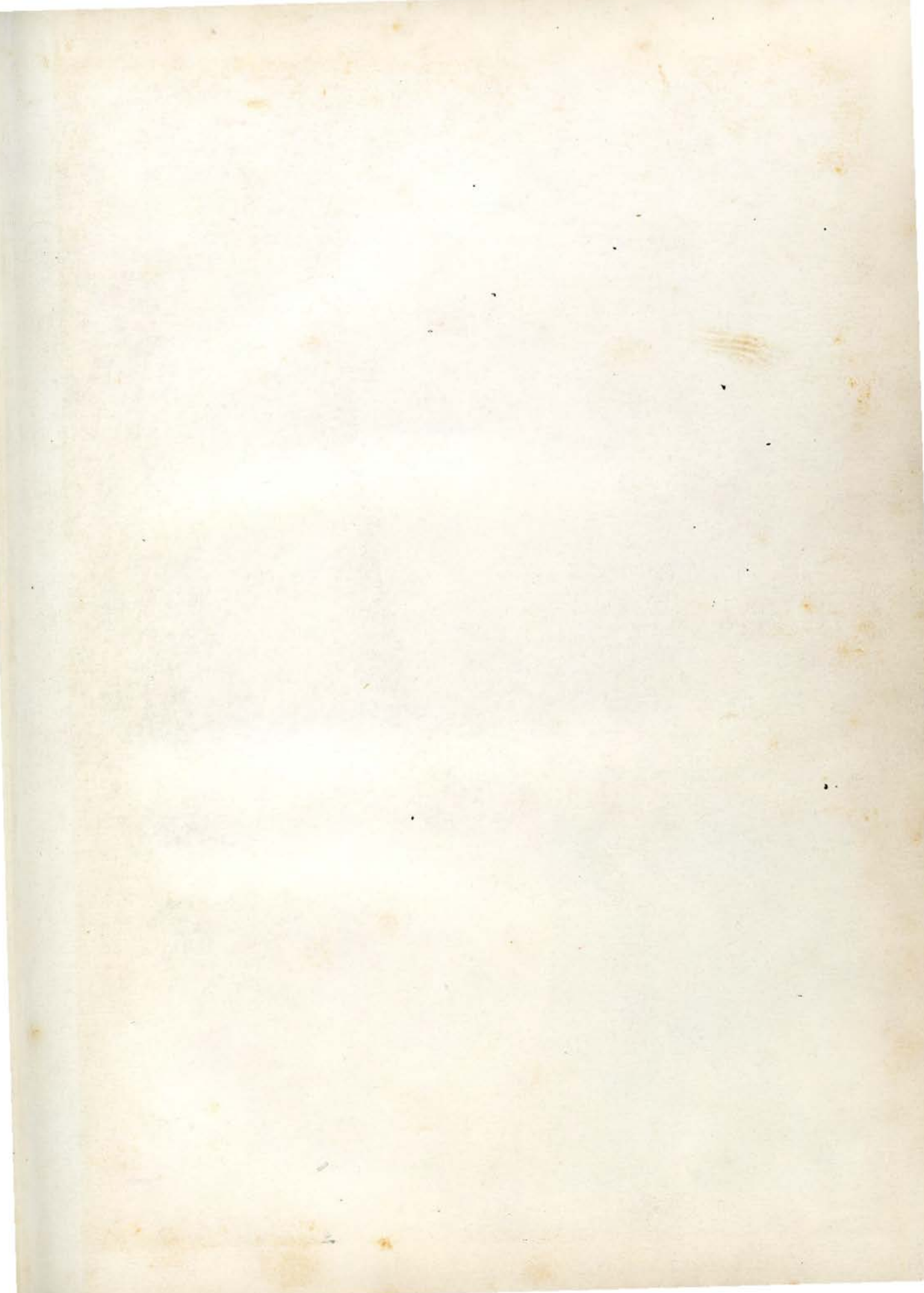
*The*  
**BUCCANEER**

1 9 4 2





LIBRARY  
EAST TENNESSEE STATE COLLEGE  
JOHNSON CITY, TENNESSEE







*The Buccaneer...*



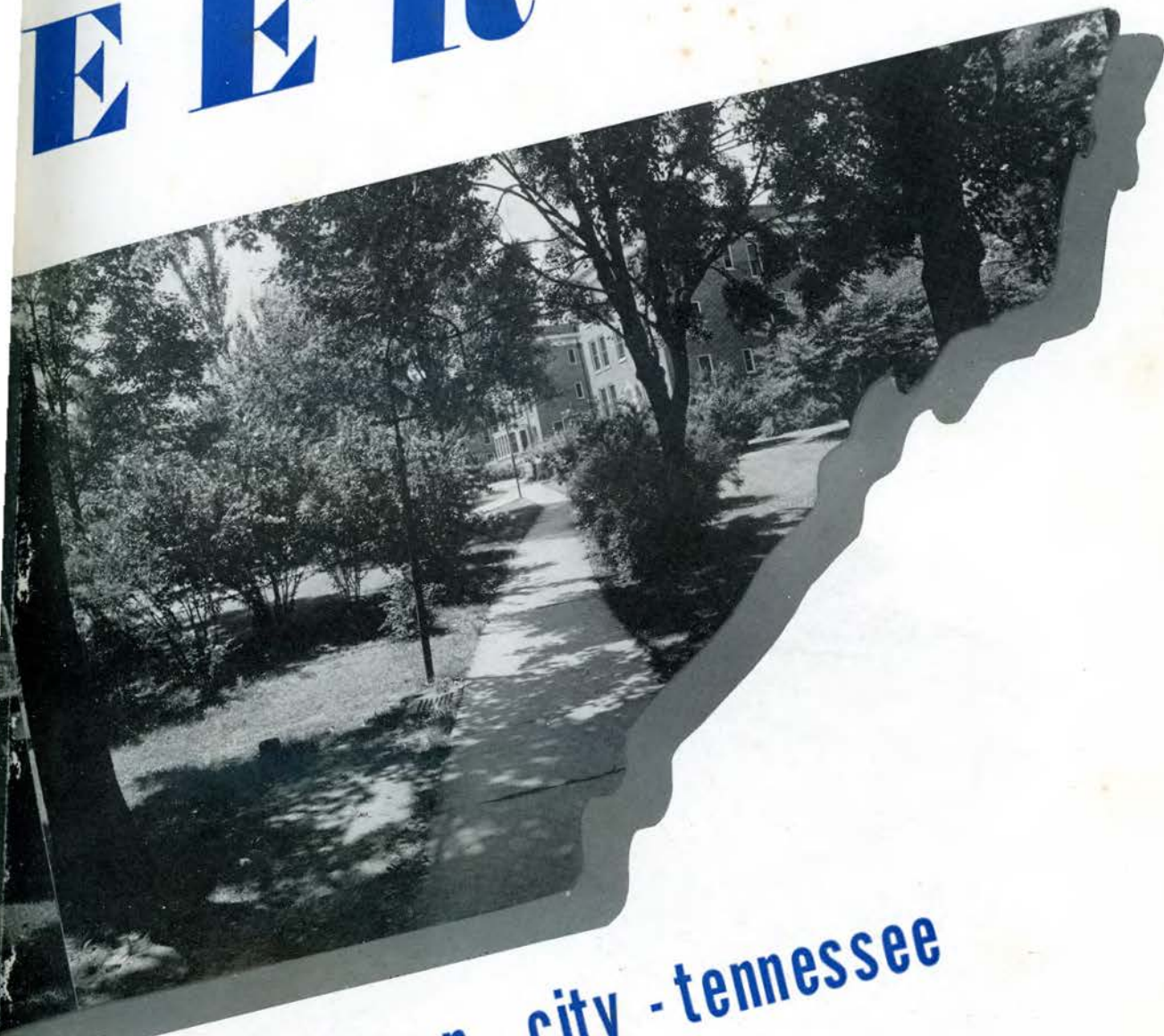


**BUCCAN**



**STATE TEACHERS COL**

**EEER '42**



**LEGE johnson city - tennessee**



S.P.O.  
LD  
5278  
'E374  
1942



B I -

## W . F . R O G E R S

To W. F. Rogers, we of the Senior Class wish to convey our most sincere admiration for his teaching, his concept of education, and the influence of his life among us.

39043

# DEDICATION

To T. C. Carson we of the graduating class owe much more than skill in a factual realm; we owe grateful thanks for a warm and human daily philosophy of life given by a man who truly knows us.

T . C . C A R S O N



9:47

Bac Staff

FEB 23 1948



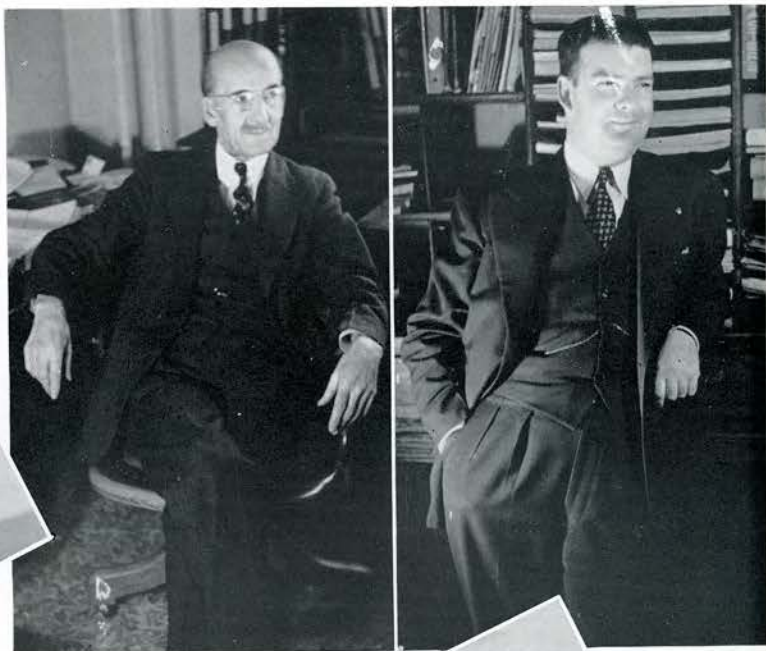


**Adminis**

# trattion







*The*  
**ADMINISTRATION**

Dr. C. C. Sherrod . . . . . President

Dean D. S. Burleson . . . Dean of Men

John A. Clack. . . . Business Manager

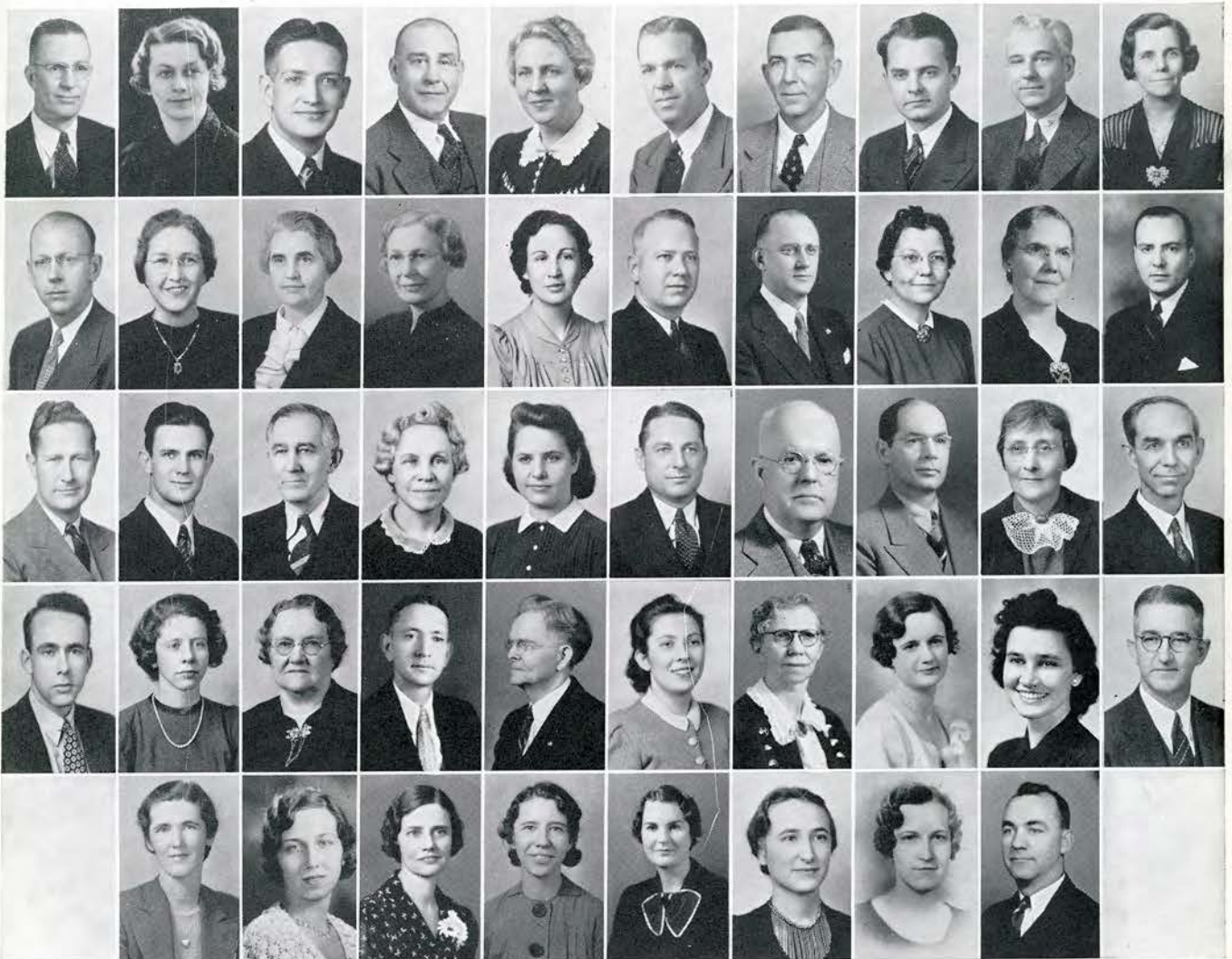
Dr. Frank Field . . . . . Registrar

Ella V. Ross . . . . . Dean of Women

# The FACULTY

P. W. Alexander, W. R. Baker, R. W. Barrigar, W. B. Bible, Elizabeth Black, Mrs. R. G. Boren, Bernice Barnard, Blanch Britton, D. M. Brown, D. S. Burleson, M. E. Butterfield, Eleanor Carlock, T. C. Carson, T. W. Chamberlain, J. A. Clack, Velma Cloyd, R. B. Cox, Mrs. Ada H. Earnest, Emma Farrell, Frank Field, L. M. Fraley, Mary L. Gordy, Marie Harrison, Mrs. D. D. Hodges, Vera Hoover, R. B. Houston, H. B. Huddle, Gretchen Hyder, Mrs. Rob-

ert Imboden, Mrs. Grace Maik, J. G. McMurray, Archie McNeal, Margaret Madden, Isabel Martin, C. H. Mathes, Maxine Mathews, James Mooney, Mrs. Lillian Poe, W. L. Prince, W. F. Rogers, Ella V. Ross, C. C. Sherrod, Elizabeth Slocumb, D. G. Stout, James T. Tanner, Mrs. J. T. Tanner, Olive Taylor, Frances Terry, Ruth Thomas, L. D. Wallis, L. R. Wheeler, Mary Williams, W. C. Wilson, Hildred Wolfe, Ina Yockley.







# *The* TENNESSEE COLLEGIAN

Pauleene Banner . . . Editor-in-Chief

Juanita Millsaps . . Business Manager

**Contributing Staff Members**—Dick Stevenson, Harry Beckner, Rita Grose-  
close, Nelle Marable, Billie Card, Eloise Carriger, Jettee Carter, Margaret  
Frick, Willard Grubb, Jay Harville, Scott Herrin, Ann King, Georgia King,  
Juanita Lindsay, Jeanne Lowry, Maxine McClain, Ray Osborne, Dorothea  
Wade, Charlotte Woods.







Editor-in-Chief  
Scott Herrin

Business Manager  
Dorothy Butler

# The BUCCANEER Staff

Associate Editor . . . Willard Grubb

Managing Editor . . . Dick Stevenson

Advertising Managers:

Jeanne Lowry, Harrison Marshall

Organization Heads:

Georgia King, Billie Card, Eleanor  
Keys, Ruby Epley

Feature Editor . . . . . Ann King

Art Editor . . . . . Maxine McClain

Athletic Editor . . . . . Laird Lewis

Faculty Sponsor . . . . . Dr. Frank Field

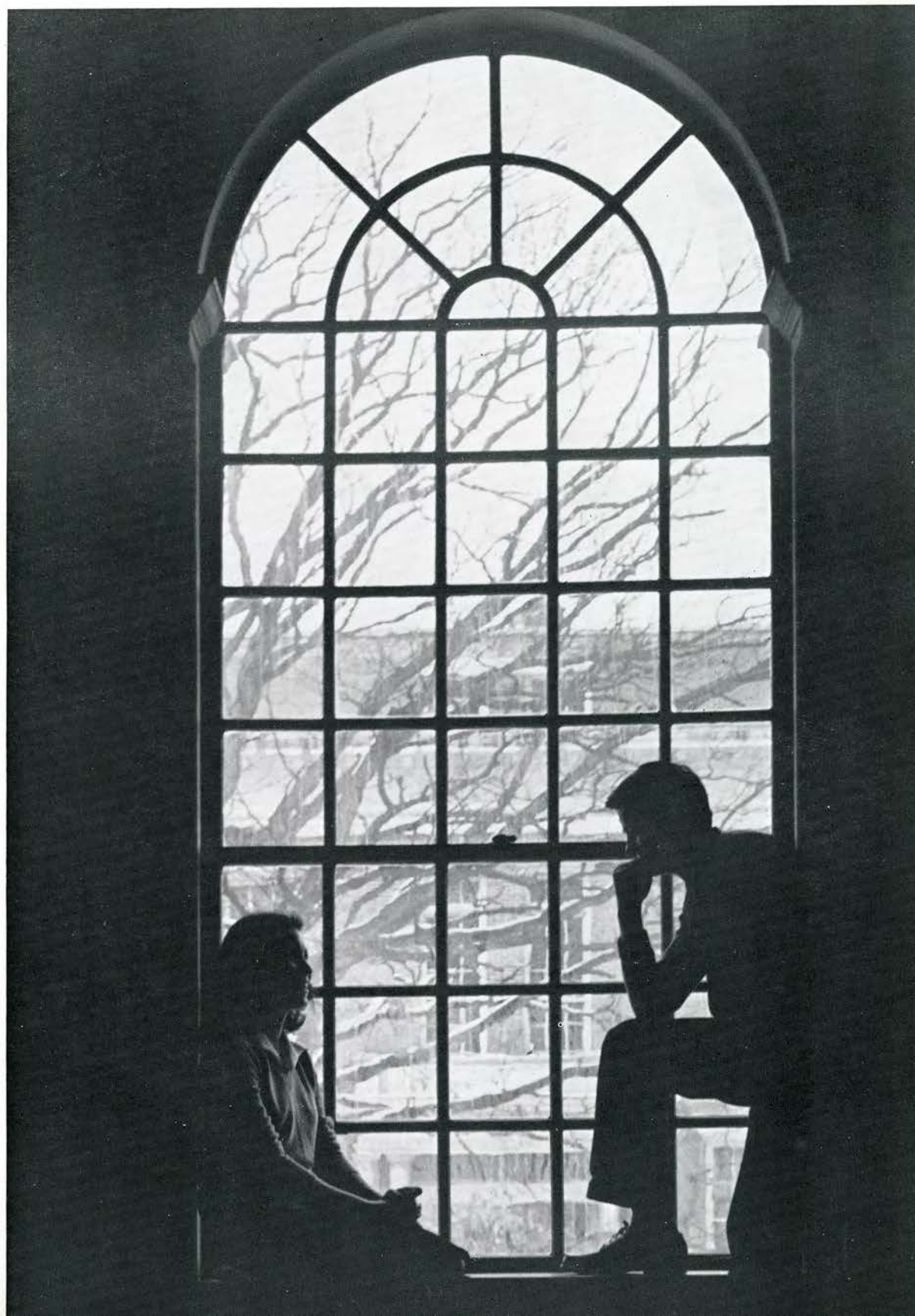
Technical Editor . . . . . Walter Heebe



# *Classes*











# C L A S S   O F   1 9 4 2

**President** . . . . . "Chub" Bolton

**Vice-President** . . . . . Scott Herrin

**Secretaries** . . . . . Eleanor Keys & Ruth May

The graduating class of nineteen forty-two has had one primary aim throughout its four years of college—to attempt to inculcate into the minds of both faculty and students a loyalty and affection

for that which we hold high in this school. It is with regret and trust we pass on this duty and goal to the class of nineteen forty-three.

# SENIORS

**Georgia Marie Arnett**  
 Elizabethton, Tennessee  
 English, History, German

**Katherine Pearl Barkley**  
 Telford, Tennessee  
 English, Social Science, Art

**Virginia Pauleene Banner**  
 Elizabethton, Tennessee  
 History, English, French  
 Honor Roll, winter, spring, '38-'39, fall, winter, spring, '39-'42; Footlight Players '38-'40; International Relations Club '40-'42, vice-pres. '40-'41; Junior class Representative to Student Council '40-'41; Junior Business Manager to BUCCANEER '40-'41; Who's Who '40-'42; Collegian Staff '39-'42; Editor-in-Chief '41-'42.

**Theron Blosser**  
 Concord, Tennessee  
 Transfer from Hiwassee and L. M. U.  
 Chemistry, Biology  
 Baseball '41-'42; Science Club '41-'42.

**Herbert Carter Bolton**  
 St. Paul, Virginia  
 Transfer from Emory and Henry, Moody Bible Institute.  
 Miracle Book Club, '40-'42; Wesleyan Foundation, '40-'42. President Senior Class, '41-'42. Who's Who, '42.

**Catherine Booth**  
 Erwin, Tennessee  
 English, Latin, History

**Josephine Gillespie Bowers**  
 Johnson City, Tennessee  
 Latin, English, Math, History

**Ralph Ernest Boy**  
 Johnson City, Tennessee  
 Chemistry, Math, German



**Dorothy Elizabeth Butler**

Tyner, Tennessee

Math, Health and Physical Education, English, History.

Y.W.C.A. '38-'42; cabinet member '40-'41; Miracle Book Club '40-'42; Wesleyan Fellowship; Sigma Omega '39-'42; Future Teachers '39-'42; Business Manager BUCCANEER '41-'42; Honor Roll; Girls "T" Club '40-'42; president '40-'41; Intramurals '38-'42; manager '41-'42; Who's Who '42; Vice President Student Government Carter Hall '41-'42; TC Award '40; "T" Sweater '41.

**Lida M. Cable**

Butler, Tennessee

Home Economics, English, History

Home Economics Club '38-'42; Y.W.C.A. '40-'42.

**Fred Cain**

Jacksboro, Tennessee

Science

**Billie Marie Card**

Chattanooga, Tennessee

Chemistry, English, Social Science.

Phi Beta Chi '38-'42; Buccaneer '41-'42; Tennessee Collegian '40-'42; International Relations Club '41-'42; Chorus '39-'42; Choir '41-'42; Assistant manager '41-'42; Y.W.C.A. '38-'42; reporter '40-'41; Footlight Players '40-'41; Miracle Book Club '39-'40; Methodist Youth Group '38-'42; Honor Roll.



**Reba Caughron**

Sevierville, Tennessee

Social Science, English, Health and Physical Education.

**Almira Lucille Chase**

Greeneville, Tennessee

Home Economics, English, Science.  
Transfer from Virginia Intermont; Sigma Omega '40-'42; Home Economics Club '40-'42; Y.W.C.A. '40-'42.

**Lydia Carleton Chandler**

Palm Beach, Florida

French, English, History.  
Transfer from Maryville College.  
Sigma Omega, '39-'42. Footlight Players, '39; Honor Roll. Glee Club; Y.W.C.A.

**Mrs. Pearl Keefauver Crouch**

Boones Creek, Tennessee

English, Geography, Health and Physical Education, Art.



**Ann Addington Culbertson**

Johnson City, Tennessee  
English, History, Health and Physical Education.

**Dorothy Dewald**

Limestone, Tennessee  
Music, English, Science.  
Senior Representative to Student Council; Glee Club '39-'41; Secretary '41-'42; Choir '41-'42; Band '39-'42; Twirler '39-'40; Majorette of Twirlers, '40-'41; Band Majorette '41-'42; Intramurals '39-'42; Honor Roll.

**Gertrude Irene Davis**

Johnson City, Tennessee  
English, Modern Languages, History  
Chorus '39-'42.

**Rosemary R. Driskill**

Newport, Tennessee  
Music, History, English.  
Transfer Tusculum College, University of Tennessee.  
Band '41-'42; Orchestra '41-'42; Chorus '41-'42.  
Choir '41-'42; Y.W.C.A. '41-'42.



**Edith Alma Dugger**

Elizabethton, Tennessee  
Social Science, English, Geography.

**Wilma Lucille Elliott**

Erwin, Tennessee  
Geography, Home Economics, English.  
Sigma Omega '40-'42; Home Economics Club '38-'42, vice-president '41-'41; Orchestra '39; Y.W.C.A. '38-'42.

**Funson Edwards**

Cumberland Gap, Tennessee  
Social Science, English, Geography.

**Ruby Epley**

Erwin, Tennessee  
English, Social Studies.  
Intramurals '38-'39; Pi Sigma '40-'41; Buccaneer '41-'42.

# S E N I O R S



**Ada Miriam Farnor**

Erwin, Tennessee  
Transfer from Asheville College  
English, Social Science, Home Economics.

**Jane Forgey**

Rogersville, Tennessee  
Home Economics, English, History



**Willard DeWayne Grubb**

Big Spring, Tennessee  
French, English, History, Geography.  
Future Teachers of America '40-'42, President '41-'42; International Relations Club '41-'42; Miracle Book Club '40; Pestalozzians '38-'42; Tennessee Collegian '41-'42; Associate Editor BUCCANEER '41-'42; Honor Roll; Junior Class President, summer '41.

**Ronald Daker Hall**

Erwin, Tennessee  
Science, History, English  
C.P.T. '40; Private Pilot License '40; F.T.A. '39-'40.



**Dorothy Pauline Harrod**

Athens, Tennessee  
Footlight Players '38-'40; Sigma Omega '38-'42; Treasurer '39; 1st Vice-president '41-'42; Y.W.C.A. '38-'42. Treasurer of Junior Class '40-'41; D.G.D.'s '40-'42; Baptist Student Union '39-'40.

**Howard Hendrix**

Watauga, Tennessee  
Geography, Health and Physical Education.



**Scott Herrin**

Johnson City, Tennessee  
Science, Chemistry, Math.  
Vice-president Senior Class, Vice-president Youth Council, F.T.A. '40-'42; Science Club '39-'40; Footlight Players '40-'41; I.R.C. '40-'41; Pi Kappa Delta '38-'40; Tau Alpha Omega '38-'39; Tennessee Collegian '40-'42; Religious Editor '42; Miracle Book Club '39-'40; Vice-president Presbyterian Christian Endeavor; Student Council '38-'39; Editor-in-chief Buccaneer '42; Who's Who; LT. O. R. C.; Honor Roll.

**Joanna Carolina Holden**

Elizabethton, Tennessee  
Geography, Social Science, English.

# SENIORS

**Elizabeth Holly**

Watauga, Tennessee  
Home Economics, History.  
Home Economics Club '38-'42; Home Management House, Fall '42.

**Orrille Huffaker**

White Pine, Tennessee  
English and Physical Education.  
Pi Sigma '39-'42; Vice-president '41-'42. Y.W.C.A. '38-'42; Vice-president, '41-'42; Student Government, '40-'42; President '40-'41; Vice-president '41-'42; F. T. A. '40-'42. Girls Intramurals '38-'42; Head of Bowling, '40-'41, '41-'42. T-C award '41. Honor Roll.

**Jane Hughes**

**Matalene Hunt**

Limestone, Tennessee  
Home Economics, English, History  
Home Economics Club '38-'42; Wesleyan Followers '41-'42; Home Management House, winter '41-'42.

**Ora Bess Hunter**

Decatur, Tennessee  
Health and Physical Education, English, History.  
Transfer Tennessee Wesleyan College.  
"TC" '42; Intramurals '40-'42; Twirler '40-'41; Flag Twirler '41-'42; Y.W.C.A. '40-'42; Sigma Omega '40-'42.

**Pearl Hurd**

Kingsport, Tennessee  
Home Economics, English, History, Physical Education, Science  
Home Ec Club '39-'42, President, '42; Y.W.C.A., '39-'42, Secretary '42; F.T.A. '42; Intramurals '40-'42; Head of Hiking '42; TC Award '41; Drill Squad '41. B. S. U., '41.

**Charles Hubert Justice**

Afton, Tennessee  
English, Social Science, Biology.

**Eleanor Keys**

Limestone, Tennessee  
History, English, Biology, Art.  
I. R. C. '40-'42; vice-president '41-'42; F.T.A. '39-'42; secretary '40-'41; Senior Class secretary '41-'42; Carter Hall Student Council Secretary '41-'42; Who's Who '41-'42; Honor Roll '38-'41; Buccaneer '41-'42.





**Ann Elizabeth King**

Erwin, Tennessee

Biology, Chemistry.

Phi Beta Chi, '39-'42, Pres. '42; Pi Kappa Delta, '38-'40, I. R. C. '40-'42; Civilian Pilot '41; Buccaneer Staff '42; Collegian Staff '41-'42; Who's Who '40-'42. Honor Roll.

**Katheryn King**

Erwin, Tennessee

Health and Physical Education, English, Social Science.

Pi Sigma '39-'42; Tennessee Collegian '40-'41; Assistant Intramural Manager '40-'41; "T" Club '40-'42; president '41-'42.

**Burgess Kiser**

Johnson City, Tennessee

Home Economics, History.

Pi Sigma '39-'42; President '41-'42.

**Glenn Kitts**

Johnson City, Tennessee

History, Science, English, Mathematics, Industrial Arts; Football '41; "T" Club '41.



**Elizabeth Knight**

Jonesboro, Tennessee

Music, English, History, Social Science.

International Relations Club '40-'42, Secretary '41-'42; Future Teachers of America '38-'42, Vice-president '41-'42; Band '40-'42; Glee Club '38-'42; Who's Who '41-'42; S.T.C. Club '41-'42, Secretary '41-'42; Honor Roll.

**Tom Allison Lyle**

Johnson City, Tennessee

Industrial Arts, Social Science.

**John Alvin Lundy**

Erwin, Tennessee

Industrial Arts, Geography, History.

Pestalozzians '39-'42; Phi Beta Chi '39-'41; Basketball '40-'42; Football '41; Track '41; Intramurals '39-'41; Ritter Hall Government '41-'42.

**Anna Maxine McClain**

Johnson City, Tennessee

Art, Social Science, Music.

Future Teachers of America '41-'42; International Relations Club '41-'42; Band '40-'42; Tennessee Collegian '41-'42; Buccaneer '41-'42; Honor Roll.

**Nelle Elizabeth Marable**

Johnson City, Tennessee  
Biology, English, History, Physical Education.  
Phi Beta Chi '39-'42; Footlight Players '39-'41;  
Methodist Youth Group '39-'42; Miracle Book Club  
'41-'42; Collegian Staff '41-'42; Glee Club '39-'41.

**Ruth May**

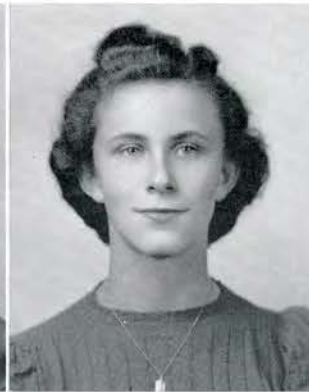
Jonesboro, Tennessee  
Music, History, English.  
Sigma Omega '39-'41; Band '39-'42.

**Mildred Christine Marshall**

Rutledge, Tennessee  
Bradenton, Florida  
Transfer Carson-Newman College, Florida Southern  
College.  
Social Science, Health and Physical Education,  
Geography, English, Y.W.C.A.

**Doris L. Meredith**

Johnson City, Tennessee  
Music, History, English  
Band '40-'42; Glee Club '39-'42; Footlight Players  
'40-'41; Y.W.C.A. '39-'42; Honor Roll '40-'42; Intra-  
murals '39-'40.



**Lillian Inez Merritt**

Madisonville, Tennessee  
Secretary-Treasurer Student Body '41-'42; Sigma  
Omega '39-'42; Secretary Junior Class '40-'42;  
Y.W.C.A. '39-'42; treasurer and business manager  
'41-'42; Science Club '40-'41; Secretary '40-'41; Glee  
Club '38-'39; TC award '40; T sweater award '41;  
Honor Roll; Footlight Players '40-'41; Ballroom  
Dance Instructor '41-'42.

**Juanita Millsaps**

Madisonville, Tennessee  
Science, English, Physical Education.  
Y.W.C.A. '38-'42, Business Manager '41, President  
'42; Science Club '38-'42, Secretary-Treasurer '42;  
Dramatic Club '38-'39, Tennessee Collegian '40-'42,  
Assistant Business Manager '40, Business Manager  
'42, TC Award '41, Who's Who, '42, Pi Sigma  
'42, Student Government Treasurer '42.

**Mary Nola Milburn**

Bristol, Tennessee  
English, Social Science, Biology.  
Transfer Virginia Intermont.  
Y.W.C.A. '41-'42; I.R.C. '41-'42; M.B.C. '41-'42;  
Wesleyan Fellowship Group '41-'42.

**William Albert Mitchell**

Walterboro, South Carolina  
Industrial Arts, Physical Education.  
"T" Club '38-'42; Co-captain Football Team '41.  
C.P.T. '41; Baseball '39-'40.



# S E N I O R S

**Lois Moody**

Green Mountain, North Carolina  
Social Science, English, Health and Physical Education.  
Drill Squad '38-'39; Home Economics Club '38-'39;  
Future Teachers of America '41-'42; Miracle Book Club '42; President of Brethren Young Peoples Club '41-'42; Honor Roll.

**Ruby Brumit Mooney**

Elizabethton, Tennessee  
English, History, Geography.

**Vesta Mooneyhan**

Greenville, Tennessee  
Social Science, Health and Physical Education,  
English, History. Honor Roll.

**Thomas H. Morris, Jr.**

Johnson City, Tennessee  
History, English, French, Math.

**Ray Gregg Osborne**

Jonesboro, Tennessee  
History, Art, Social Science, Industrial Arts.  
International Relations Club '40-'42, president '41-'42; Baptist Student Union, secretary '41-'42; Future Teachers of America '41-'42; Phi Beta Chi '41-'42; Tennessee Collegian '41-'42; Honor Roll.

**Mary Dee Ottinger**

Parrottsville, Tennessee  
English, French, Physical Education, and History.  
Y.W.C.A. '39-'42; Intramurals '40-'42; Head of Softball '41, Head of Archery '42, TC award '40, Drill Squad '39-'41, F.T.A. '42.

**William Cornelious Pearson**

Persia, Tennessee  
Science, English, Industrial Arts.

**Elizabeth Charlotte Riley**

Bluff City, Tennessee  
Home Economics, English, Social Science.



# SENIORS

**Kearney Rogers**

Jonesboro, Tennessee

Music, English, History.

Sigma Omega '41-'42; Glee Club '38-'42; president '41-'42; secretary '40-'41; secretary of S.T.C. Club '40-'41, vice-president S.T.C. '41-'42; Tau Alpha Omega '38-'42; Band '41-'42; Drum Major '41-'42; Choir '41-'42; Y.W.C.A. '39-'42; F.T.A. '41-'42; Secretary of Student Government Carter Hall, spring '42; Honor Roll, fall '42; Who's Who '42.



**Evelyn Rumbley**

Johnson City, Tennessee

Pi Sigma '38-'42; Home Economics Club '38-'39; Band Drum Major '38-'40.



**Mary Frances Ryburn**

Erwin, Tennessee

Health and Physical Education, English, History.

**Ellis Sabin**

Jonesboro, Tennessee

Industrial Arts, Physical Education.

Football '38-'42; President Soph. Class '39, "T" Club '38-'42, Vice-President '40, President '41-'42; President Student Council '41-'42, C.P.T. '41, Private Pilot's License '41, Intramural Basketball '41.



**Lottie Pauline Scott**

Shady Valley, Tennessee

Social Science, English, Science, Home Economics.

**Louise Seaver**

Johnson City, Tennessee

Home Economics, Health and Physical Education, Geography.

Pi Sigma Sorority '40-'42; Girls Intramurals '39-'41; Band '38-'40; Home Economics Club '38-'39; Home Management House, Fall '41.



**Mrs. Tera Harshbarger Simmons**

Johnson City Tennessee

Transfer from Wesleyan College. Music.

Nashville Conservatory of Music '29; Teacher in Johnson City Public Schools '20-'29; Elementary Principal, Washington County '33-'41; First Honor Roll '41.

**Richard Stevenson**

Morristown, Tennessee

Biology and Chemistry.

Transfer from Hiwassee College. Collegian Staff '40-'42; desk editor '40-'41; co-editor '41-'42. Phi Beta Chi '41-'42. Elected member of Tennessee Academy of Science '41.



**Charlotte Swadley**

Johnson City, Tennessee

Home Economics, English, Health and Physical Education.

Home Economics Club '40-'42; Future Teachers of America '41-'42; Miracle Book Club '41-'42; Brethren Youth Club '41-'42; Honor Roll; Home Management House, Winter '41-'42.

**Virginia Swingle**

Johnson City, Tennessee

Home Economics, Social Science, English.

Pi Sigma '40-'42, Band '38-'42, Sgt. '42, Orchestra '41-'42; Girls Intramurals '39-'41, STC Club '40-'42; Music Award '40.

**Eloise Talley**

Erwin, Tennessee

Music, Social Science.

Band '38-'42; Glee Club '39-'41; Orchestra '39-'42; President '42.

**Dewey Ray Taylor**

Shouns, Tennessee

Industrial Arts, Geography.



**William Thomas**

Johnson City, Tennessee

Chemistry, Math.

**Malvina Trent**

Russellville, Tennessee

English, French, Geography.

Transfer Carson-Newman College. Honor Roll; Baptist Student Union '41-'42; Intramurals '41-'42.

**Dwight Tilson**

Limestone, Tennessee

Music, History.

Glee Club '38-'42; Choir '38-'42; Manager '41-'42; Vice-president S.T.C. Club '40-'41; Band '41-'42.

**Nellie Turner**

Bristol, Tennessee

Transfer Virginia Intermont College.

Pupil of Edwin Hughes, N. Y. City; Transfer Juilliard School of Music, N. Y. City.

**Helen Dugger Van Gelder**

Elizabethton, Tennessee  
Social Science, English, Art.

**Irene Walsh**

Mountain City, Tennessee  
English, Biology, Chemistry, French.  
Transfer Milligan College. International Relations  
Club '42; Y.W.C.A. '42.

**Mary Wall**

Russellville, Tennessee  
Transfer Carson-Newman College.  
Girls Glee Club; President of B.S.U. '41-'42; Drill  
Squad; Intramurals '41-'42.

**Beatrice Louise Webb**

Forbes, North Carolina  
English, Social Science, Health and Physical Educa-  
tion. Drill Squad '39-'40; Band '40-'42.



**Frances Wheeler**

Shelbyville, Tennessee  
Transfer from Middle Tenn. STC '39.  
French, English, History, Physical Education.  
F.T.A. '39-'42; I.R.C. '41-'42; Intramurals '39-'42;  
Head of Softball '42; TC Award '41, Head of Hiking  
'41, Y.W.C.A. '40-'42, Honor Roll, Drill Squad '39-'42.

**Mary Winslow**

Chuckey, Tennessee  
Home Economics, English, Physical Education.  
Y.W.C.A. '39-'42; Home Ec. Club '42.







# CLASS OF NINETEEN FORTY-THREE

President	. . . . .	Bob Parson
Vice-President	. . . . .	Nat Lockett
Secretary	. . . . .	Dora Hale Mitchell
Treasurer	. . . . .	Mary Ruth Pitillo

We, the class of nineteen forty-three acknowledge our greater responsibility in assuming the status of the Senior Class; we do appreciate the efforts of the gradu-

ating class, and accept with confidence the aims which they have striven to accomplish.



# J U N I O R S



William Allison  
Betty Bagby  
Harry Beckner

Louise Bible  
Bonnie Brobeck  
Edith Broyles  
Katherine Brumit

Madge Bureson  
Reno Bureson  
Paul Campbell  
Eloise Carriger

Marie Catron  
Evelyn Crookshanks  
Helen Denny  
John Exum

Mary Nelle Feathers  
Motelle Gaby  
Anita Goldstein  
Margaret Gray

Nola Gross  
Leolah Henley  
Edith Hill  
Emma Howard

Sue Huber  
Marion Jett  
Ruby Jones  
Florence Julian

Carl Keebler  
Georgia King  
John Koonce  
Laird Lewis

Juanita Lindsay  
Georgia Linville  
Nat Lockett

# JUNIORES

Zaleen Lowe  
 Jeanne Lowry  
 Ruby McKinney

Helen Marion  
 Harrison Marshall  
 John Masengill  
 Lillian Martin

Dora Hale Mitchell  
 Maude Mooneyhan  
 Charlotte O'Dell  
 Bob Parsons

Mary Parsons  
 Gladys Patterson  
 Warren Pierce  
 Mary Ruth Pittillo

Genie Range  
 Theda Rochester  
 Vernon Roithner  
 Billy Rudder

Frances Shoun  
 Margaret Shupe  
 Katherine Smelcer  
 Helen Louise Smith

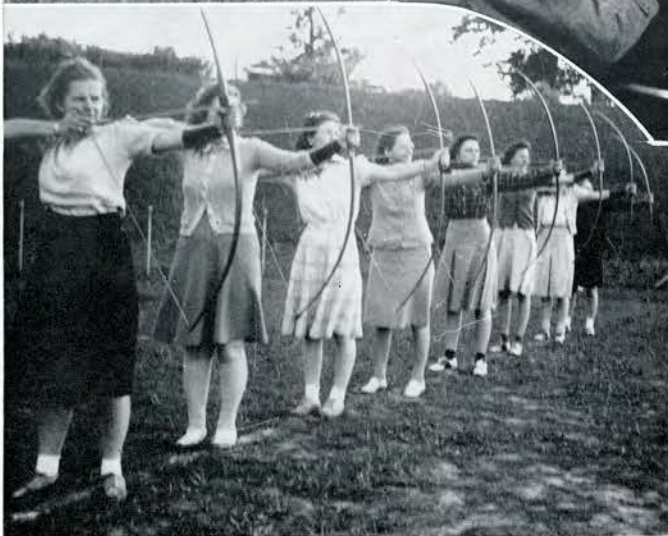
Lula Smith  
 Maxine Stapleton  
 Nelle Starnes  
 Billie Susong

Betty Tolbert  
 Geraldine Trivett  
 Anna Mae Watson  
 Betty Watson

Frank Whitaker  
 Virginia Williams  
 Dan Zoerb









# CLASS OF NINETEEN FORTY-FOUR

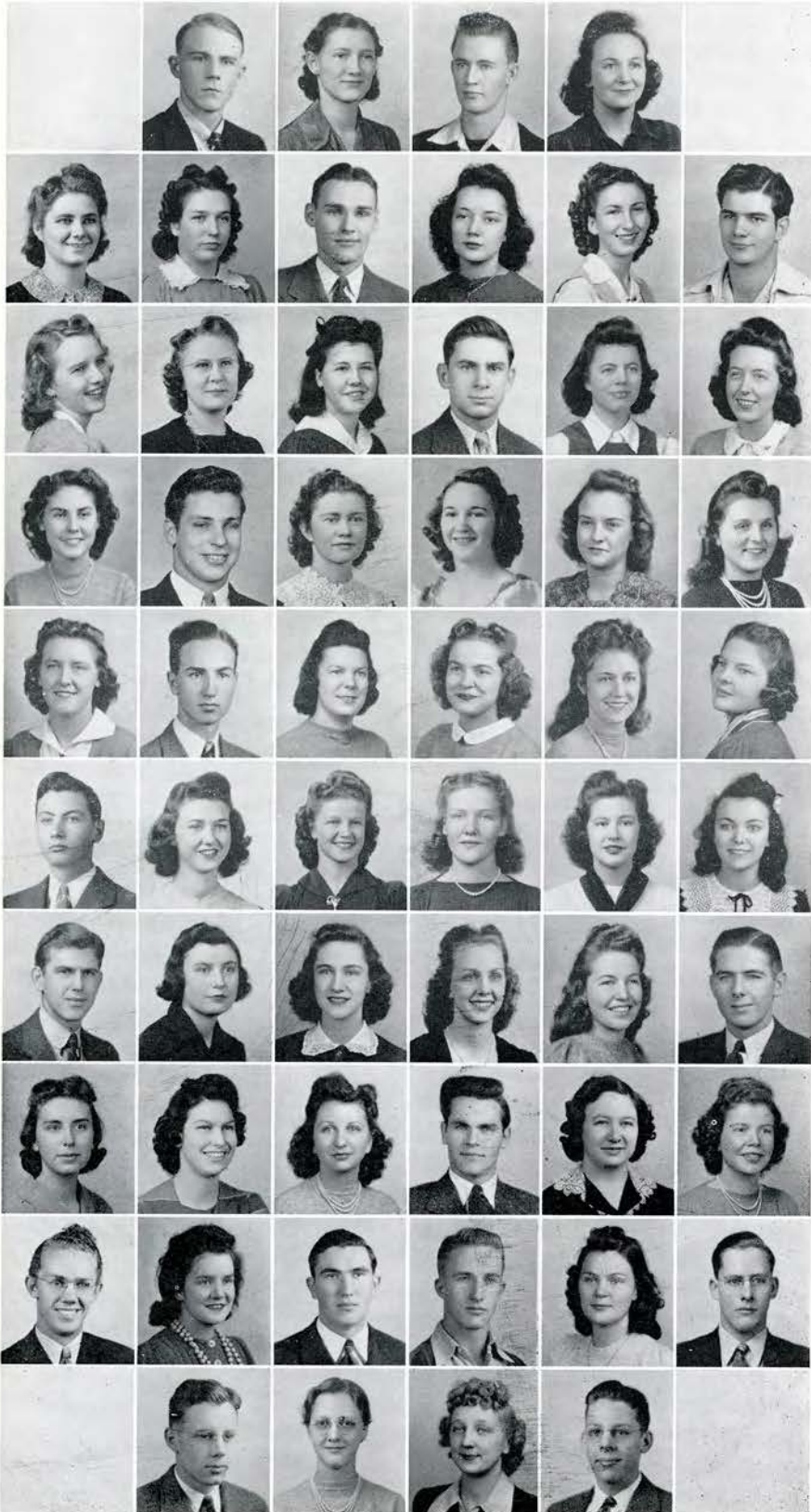
President . . . . .	Homer Isbell
Vice-President . . . . .	Jimmy Ellis
Secretary . . . . .	Martha Fleenor
Treasurer . . . . .	Dot Davis

The Sophomore Class has seen a portion of the thing called college life and have visualized it's true meaning to a very

great extent. It is with unparalleled eagerness we face the next two years ahead.



# SOPHOMORES



Lyon Agee  
Virginia Anders  
Grey Anderson  
Nona Vee Anderson

Hazel Ausmus  
Margaret Ayers  
John Borden  
Jean Briscoe  
Gladys Brooks  
Leo Brookshire

Mary Kathrine Brown  
Minnie Lee Brown  
Arlene Byrd  
Houston Campbell  
Meryle Campbell  
Jettee Carter

Delsie Mae Carver  
Bill Carey  
Hazel Cates  
Naoma Cates  
Edith Chancey Campbell  
Julia Chevaleyk

Virginia Clark  
Warner Lee Clark  
Margaret Collins  
Ruth Cook  
Edyth Cope  
Martha Cowan

Lawrence Cox  
Dorothy Davis  
Louise Deakins  
Sybil Dunn  
Hope Edwards  
Mariah Edwards

Jimmy Ellis  
Ruth Emmert  
Sara Fink  
Martha Fleenor  
Jane Fudge  
Bill Gardner

Kathryn Garland  
Muriel Gibson  
Orene Good  
Robert Gray  
Dora Grindstaff  
Rita Groseclose

Jay Harville  
Glenn Dean Heidle  
Gordon Hendrix  
John Hillenbrand  
Elizabeth Hodges  
James Hurst

Homer Isbell  
Luella Isenburg  
Gale Keezel  
Hubert Kilday

# SOPHOMORES

Bill Kimsey  
 Jim Kirkpatrick  
 Thad Lacey  
 Virginia Lamie

Dewey Layne  
 Sue Lee  
 Kathleen Lewis  
 Martha Liggett  
 Argle Love  
 Kathryn McCracken

Dorothy McNeas  
 Carolyn Martin  
 John Martin  
 Mary Louise Meredith  
 Ina Pate Miller  
 Pauline Miller

Inell Myers  
 Jim Nave  
 John Nave  
 Eva Ousley  
 Bashie Pate  
 Hope Pearson

Aileen Pickle  
 Ella Pierce  
 Faye Price  
 Lela Ramsey  
 Virginia Reed  
 Wanneta Riggs

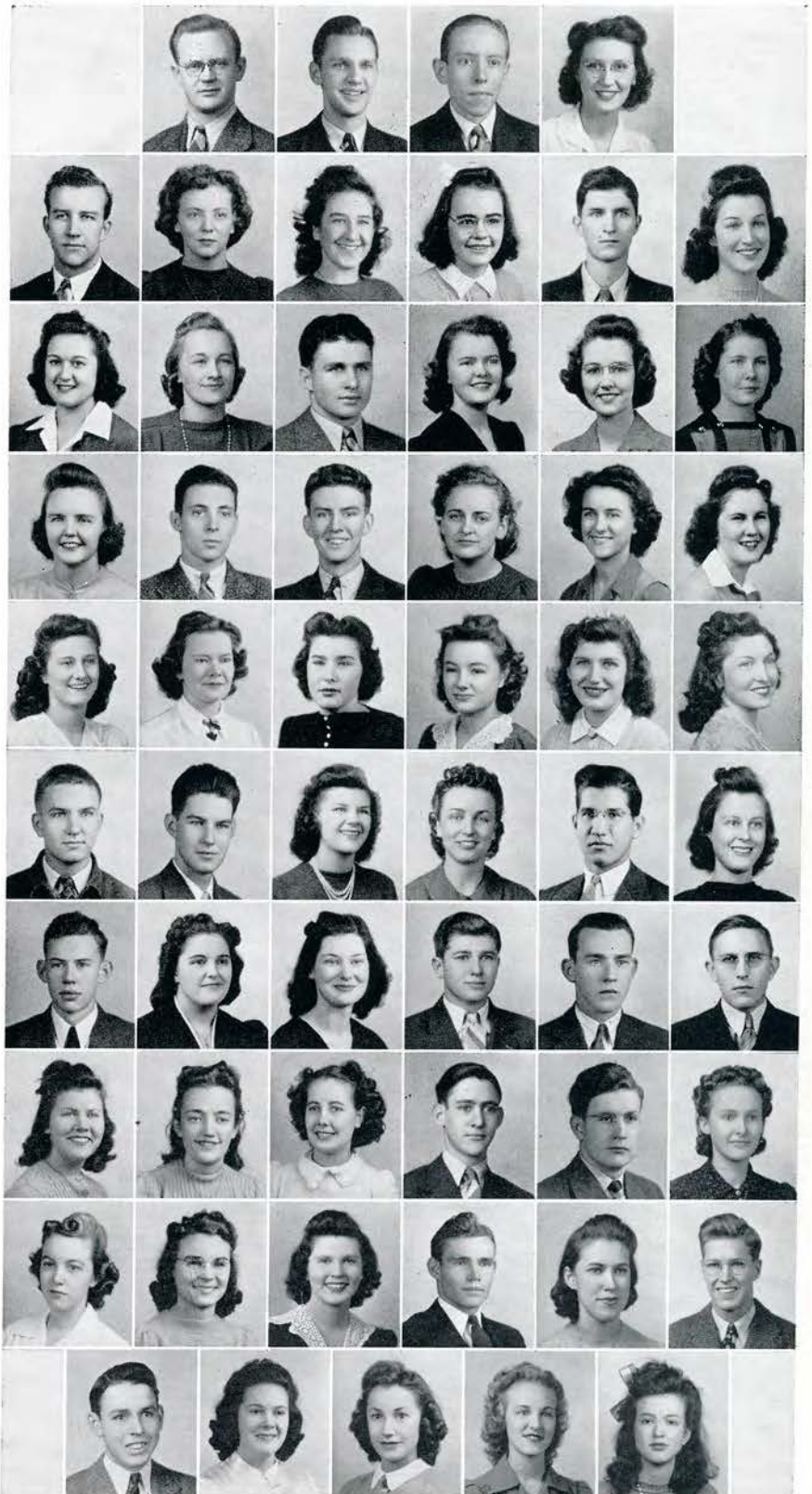
Don Sabin  
 Preston Scott  
 Natalie Shoun  
 Mary Simcox  
 Howard Simmons  
 Marguerite Sizemore

Bill Slemons  
 Faye Smith  
 Ivodine Smith  
 Roland Smith  
 Romane Smithson  
 Ralph Stanfill

Veta Stout  
 Joyce Street  
 Mary Stuart  
 Ernest Strickland  
 Frank Tannewitz  
 Elizabeth Tapp

Jennie Taylor  
 June Taylor  
 Lucy Taylor  
 Vowe Tilson  
 Helen Vinsant  
 Tommy Watkins

K. B. Whetsel  
 Viola Willis  
 Lucille Willis  
 Reece Winkle  
 Marlene Young









# CLASS OF NINETEEN FORTY-FIVE

President . . . . . Horace Parsley  
Vice-President . . . . . Edward McFaddin  
Secretary-Treasurer . . . . . Dorothy Stout

We of the Freshman Class have already derived what is necessary for the spirit of our college and with anticipation and knowledge we look forward to helping

forge and mold the belief that our school is a school that commands loyalty and respect.





## FRESHMEN

Adkins, Mary Helen  
 Alexander, Martha  
 Allen, Garnet  
 Angel, Ruth  
 Asbury, Johnny  
 Bailey, Bill  
 Bailey, Dorothy  
 Bailey, Fate  
 Baird, Florence  
 Barkley, Mary Nelle  
 Barnes, Virginia  
 Bartley, Rita Lou  
 Beckner, Fred  
 Bell, Jean  
 Black, Grace  
 Boles, Tommy  
 Bolton, Alfred  
 Bolton, Jewell  
 Bowie, Kyle  
 Bowman, Dale  
 Brookshire, Leo  
 Brown, Clinton  
 Brummitt, Phillip  
 Burnett, Jack  
 Burrus, John  
 Butler, Martha  
 Cambron, Martha  
 Campbell, Albert  
 Campbell, Jane  
 Campbell, Roland  
 Cardwell, Irene  
 Cardwell, Wayne

Carr, Lillian  
 Carter, Luther (Jack)  
 Cave, Mrs. Mary  
 Chapman, Roy  
 Christian, Inez  
 Clark, Wilma  
 Clay, Phyllis  
 Combs, Zell  
 Cooke, Gale  
 Copp, Hilda  
 Cox, Mildred  
 Cox, Jack  
 Crawford, Charles  
 Creamer, Charles  
 Crouch, Jim  
 Crowe, J. W.  
 Curtis, Paul  
 Day, Jessie  
 Deakins, Paul  
 Deakins, Ross  
 DePew, Burl  
 Dickson, Doris  
 Diman, Elizabeth  
 Donnelly, Carolyn  
 Dunbar, Paul  
 Duncan, Lennie  
 Duncan, Lois  
 Earley, Kathleen  
 Edwards, Dick  
 Eisenhower, Rosemary  
 Ernst, Jack  
 Folsom, Harold

Freeman, Robert  
 Frye, Paul  
 Gardner, Marjorie  
 Garland, Frances  
 Gilbert, Frank  
 Goodman, Lucille  
 Gouge, Willie Faye  
 Groseclose, Marion  
 Hambough, Petie  
 Hannah, Evelyn  
 Harper, J. M.  
 Harr, Ermalie  
 Harris, Mary Jo  
 Harrison, Stanley  
 Hart, Clara  
 Hartley, Dorothy  
 Hartsell, Lester  
 Hawkins, Roy  
 Heifner, Alice  
 Henley, Irene  
 Henry, Carolyn  
 Henry, Helen  
 Hill, June  
 Hodges, Robert  
 Hopkins, Ross  
 Howard, Lois  
 Howell, Jesse  
 Hullette, Arthur  
 Humphreys, Lee  
 Hyder, Albert  
 Hyder, Newton  
 Idkins, Mary Lou





Isbell, Nancy  
 Jenkins, Lottie  
 Jenkins, Virginia  
 Jenkins, William  
 Jennings, Tom  
 Jett, Helen  
 Jobe, James  
 Johnson, Charles  
 Johnson, Margaret  
 Johnson, Mildred  
 Johnson, Priscilla  
 Johnson, Virginia  
 Johnston, Johnnie  
 Jones, Eleanor  
 Jones, Thelma  
 Jones, William F.  
 Julian, Austin  
 Keeler, William H.  
 Keene, Louis  
 Keller, Helen  
 Keyes, Paul H.  
 Kilday, Helen  
 Kilday, Wave  
 King, Herbert  
 Lane, Billy  
 Larrish, Betty  
 Lee, Helen  
 Legg, William  
 Litton, James  
 Long, Annie Mae  
 Lowe, Juanette  
 Loy, Margaret  
 Lyle, Joyce  
 Lynch, Boyd  
 McCall, Louise  
 McClain, Madaline  
 McFaddin, Edward  
 McKamey, Howard  
 McNabb, Talmadge  
 McNeese, Dorothy

Marshall, Olen  
 Marshall, Peggy  
 Mason, Jean  
 Milburn, Glen  
 Milburn, Ruth  
 Miller, Jack  
 Miller, Sue Neil  
 Montgomery, Charles  
 Moore, Louise  
 Mottern, Bill  
 Morr, William Earl  
 Nanney, Dorothy  
 Nave, Marion  
 Nolon, William  
 Oliver, Lois  
 Orr, Louise  
 Ottenfeld, Nancy  
 Pangle, James  
 Parsley, Horace  
 Pemberton, Jeanne  
 Peters, Frances  
 Peters, Lois  
 Phillips, Orla  
 Pickle, Aline  
 Pickrell, Royle  
 Powell, Anne  
 Pruett, William  
 Quinn, Frances  
 Rader, Naomi  
 Ramsey, Faye  
 Reece, Asa  
 Richmond, Wilma  
 Roach, E. A.  
 Roark, Helen  
 Rosson, Richard  
 Ryan, Kathryn  
 Sammons, Martha  
 Sams, Nat  
 Scott, William  
 Seal, Elmer

Selby, John  
 Self, Dale  
 Sells, Dorothy  
 Sherwood, Betty Jo  
 Simmonds, Mary Gordon  
 Slonaker, Charles  
 Smathers, Mary  
 Stansberry, Charles F.  
 Stout, Dorothy  
 Street, Luther  
 Stump, June  
 Susong, Helen  
 Taylor, Helen  
 Taylor, Martha  
 Trivette, Chad  
 Trusler, Pal  
 Wade, Dorothea  
 Walker, Duard  
 Walker, Wanda  
 Wallace, Gloria  
 Walls, Naomi  
 Ward, Roy  
 Webb, Ruth  
 Webster, Raymond  
 Weeks, Virginia  
 Wells, James  
 West, Betty  
 Whaley, Nanabelle  
 Whitehead, Mary Alice  
 Williamson, Aminell  
 Wilson, Helen  
 Wilson, Vernon  
 Wood, Betty Jo  
 Wood, Jo Ann  
 Woods, Charlotte  
 Woodward, Mary Kathryn  
 Worth, J. A.  
 Wright, Aileen  
 Young, Howard





# ***Athletics***





# ATHLETICS



**Coach Gene McMurray**

Head Football Coach  
Head Basketball Coach  
Assoc. Tennis Coach



**Coach Jim Mooney**

Baseball Coach  
Asst. Football and  
Basketball Coach  
Director  
of  
Men's  
Intramurals

**Coach Archie McNeal**

Head Tennis Coach



# Nineteen Forty One---Forty Two

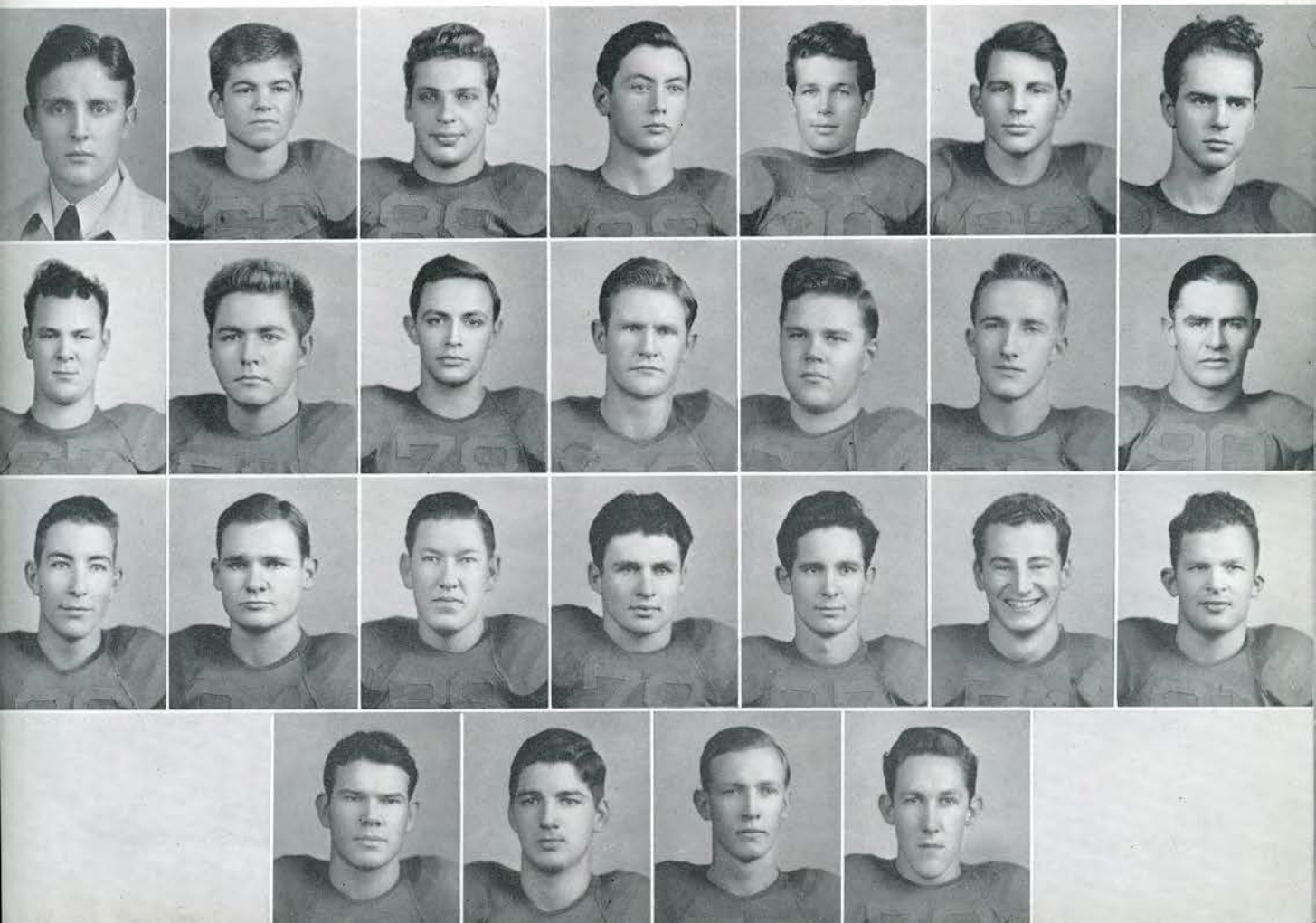
## FOOTBALL

Co-captains . . . . . Buck Hunt and Bill Mitchell

### SCHEDULE :

September	18	—Emory-Henry .....	there
September	21	—Milligan .....	here
October	4	—Carson-Newman .....	there
October	11	—Emory-Henry .....	here
October	18	—Tusculum .....	here
October	25	—Carson-Newman .....	here
November	8	—Maryville .....	here

**Players**—Ends: Green, Sabin, Masengill, Young, Cos, Webster, Schultz; Tackles: Rice, Jennings, Carey, Day, Miller, Holt; Guards: France, Parsley, Hillenbrand, McQueen, B. Green, Kitts; Centers: Mitchell, Martin, Beane; Backs: Hunt, Goforth, Johnson, Shipley, Humphreys, Kline, Montgomery, Puckett, Hambaugh, Davis, Buchanan, Ponder, Ernst.







**VARSITY FIVE**

Keebler, Goforth, Burleson,

Jesse, Exum.

# BUCCANEER CAGERS

**Players:**

Exum, Co-capt.  
 Burleson, Co-capt.  
 Goforth  
 Self  
 Jessee  
 Keebler  
 Bean  
 Smith

Jennings  
 Green  
 Nave  
 Bailey  
 Julian  
 Burrus  
 Shipley  
 Hawkins



# BASEBALL

## SCHEDULE:

April	4—Carson-Newman .....	there
April	7—Milligan .....	here
"	11—Tusculum .....	there
"	16—Carson-Newman .....	here
"	28—Lincoln Memorial .....	there
May	6—Lincoln Memorial .....	here
"	8—Tusculum .....	here

### Squad:

Kimsey  
Martin  
Buchanan  
Haun  
Smithson  
Curtis  
Ponder  
Layne  
Blosser  
Nave  
Walker

Lewis  
Green  
Brown  
Julian  
King  
Marshall  
Young  
Rice  
Jobe  
Chapman  
Smith, Mgr.







# “ T ” CLUB

## OFFICERS:

President . . . . .	Reno Burleson
Vice-President . . . . .	Frank Parsley
Secretary-Treasurer . . . . .	Jack Green

## MEMBERS:

Buchanan, Carey, Dubbs, Exum, France, Goforth, Green, Haun, Jennings, Keebler, Kitts, Martin, Mitchell, Montgomery, Nave, Rice, Sabin, Tannewitz, Dobson, Hunt, Lawson, Puckett, and Ellis.

## PURPOSE:

The “T” Club is composed of lettermen whose objective is to promote school spirit and to increase the various activities of the school.

# Men's INTRAMURALS

## PURPOSE:

The purpose of Intramural sports is to encourage participation in seasonal activities, by the men on the campus who do not take part in the intercollegiate sports activities of the school.

## TEAMS:

**Hickory Nuts, Champions:** Buchanan, Marshall, Nave, Julian, Walker, Lewis, Freeman.

**N.Y.A. Boys, Runners-Up:** Ponder, Smith, Pratt, Young, Green, Harville,

**Green Mountain Boys:** Howell, E., Howell, J., Bailey, Tannowitz, Layne, Nave, Gardner, King, Cardwell, Carroll.

**Golden Tigers:** Scott, Kirkpatrick, Selby, Burrus, Slonaker, Hopkins, Humphreys, Seals, Harrison.





# Girl's

**Manager**  
DOT BUTLER

**Asst. Manager**  
JEANNE LOWRY

## PURPOSE:

The Purpose of the Intramural Department, sponsored by Miss Hildred Wolfe, is to provide recreational activities for both dormitory students and off-campus students, through the facilities of the Physical Education Department. We have a well organized honor system whereby girls participating in several individual and team sports may receive the TC award and "T" sweater award.

**"T" Club President**

KATHRYN KING

**"T" Club—**

**TC Girls—**

**Sponsor**

HILDRED WOLFE



# INTRAMURALS

CALENDAR 1941-42

Monthly Play Nights

Dance Hour

Tea in Carter Hall

Party in Honor of Seniors

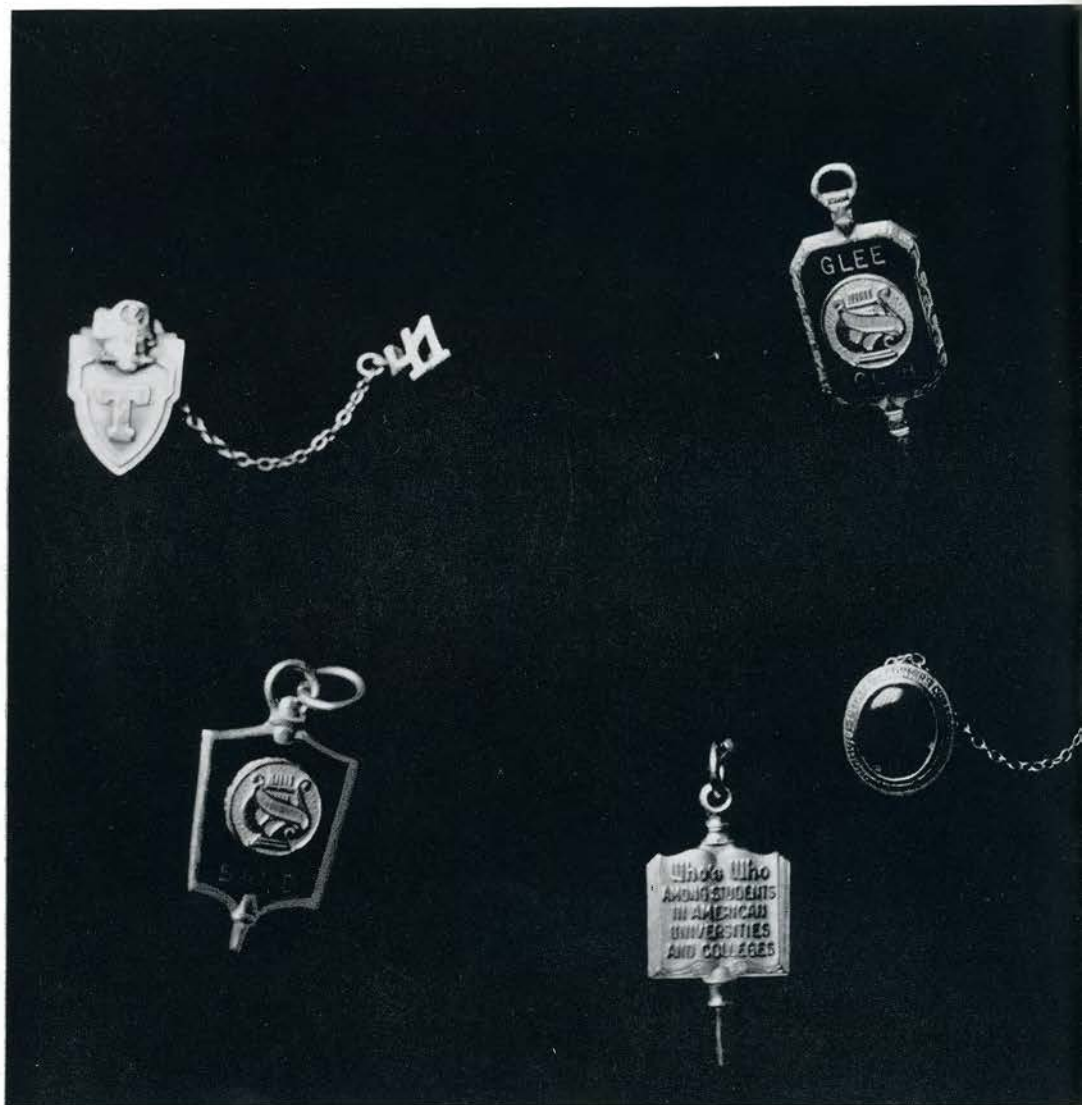
Seasonal Activities

Tournaments

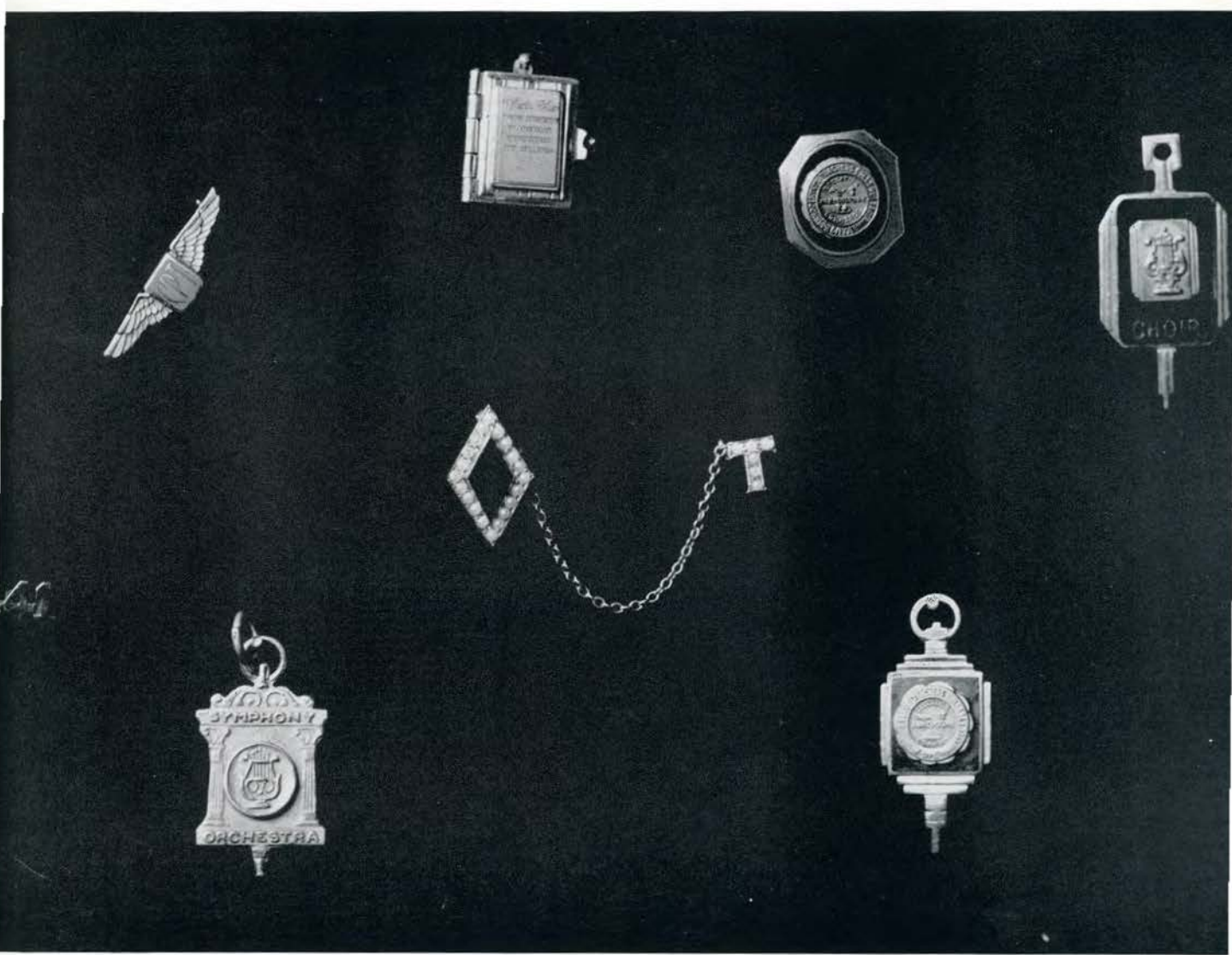
Inter-collegiate Matches







**Orga**



*organizations*





*The* STUDENT COUNCIL  
*The* RELIGIOUS COUNCIL



# PI KAPPA DELTA

MR. ROBERT COX

Sponsor

## Members and Prospective

### Members

Warner Lee Clark  
 Dick Edwards  
 Scott Herrin M  
 Ann King M  
 Harrison Marshall M  
 Tom Morris M  
 Horace Parsley  
 Dorothea Wade  
 Polly Banner  
 Burl DePew  
 Clara Hart  
 Luella Isenberg  
 Georgia King M  
 Olen Marshall  
 Jim Nave  
 Don Sabin







# PI SIGMA

<b>President</b> .....	Burges Kizer
<b>Secretary</b> .....	Betty Bagby
<b>Reporter</b> .....	Sara Find
<b>Vice-President</b> .....	Orrille Huffaker
<b>Treasurer</b> .....	Lula Smith

The Pi Sigma Sorority, the oldest organization of its kind on our campus, has functioned throughout its history to promote loyalty to the school and activities of the campus, to deepen the cultural and social life of the college, and to draw girls who compose it into closer fellowship during their college life.

This year has been one of the most successful ones in our history. The highlights of the year were so arranged as to furnish good times for all members of our campus. Sadie Hawkins week will long be remembered. It began with the dance hour, followed by a tea in Carter Hall, dinner for the Pi Sigmas and their Little Abners, and was climaxed by the dance Saturday night. The school year was climaxed by the annual houseparty in May.

# P I S I G M A

Martha Alexander  
 Nona Vee Anderson  
 Ruth Angel  
 Betty Bagby  
 Mary Nelle Barkley  
 Winnie Black  
 Cornelia Burgan  
 Ruby Epley  
 Sara Find  
 Rita Groseclose  
 Evelyn Hannah  
 Orrille Huffaker  
 Priscilla Johnson  
 Helen Keller  
 Katheryn King  
 Burges Kizer  
 Jeanne Lowry  
 Mary L. Meredith  
 Mickey Miller

Juanita Millsaps  
 Nancy Ottenfeld  
 Ann Powell  
 Eugeneia Range  
 Polly Rumbly  
 Kathryn Ryan  
 Mary Ryburn  
 Louise Seaver  
 Frances Shoun  
 Mary G. Simmons  
 Helen L. Smith  
 Lula Smith  
 Dorothy Stout  
 Virginia Swingle  
 Jenny Taylor  
 Lucy Taylor  
 Dorthea Wade  
 Martha Williams







# S I G M A   O M E G A

<b>President</b> .....	Mary Ruth Pittillo
<b>First Vice-President</b> .....	Dorotha Harrod
<b>Second Vice-President</b> .....	Louise Bible
<b>Secretary</b> .....	Martha Fleenor
<b>Treasurer</b> .....	Margaret Ayres
<b>Reporter</b> .....	Juanita Lindsay

## CALENDAR

- September 13—Swimming party and picnic, Rock Creek Park
- October 10—Home Coming Tea with Pi Sigmas
- October 11—Alumni luncheon for Sorority sisters
- October 16—"Get Acquainted" party for rushees
- October 23—Tea for rushees at Dorothy Mitchell's
- October 28—Theater party and "Cokes" at Mrs. Mooney's
- November 4—Bowling party for rushees
- November 7—Barnwarmin'
- November 15—Dinner and theatre party at Roan Cafe for rushees
- December 16—Chili supper and theater party
- December 25—Breakfast at Southern Cafe welcoming new members
- January 22—Officers' party for members
- February 13—Valentine Banquet, John Sevier Hotel
- March 7—Hike to White Rock
- April 8—Spring Dance
- April 31-May 1—House Party

# S I G M A   O M E G A

Mary Ruth Pittillo  
 Dorotha Harrod  
 Louise Bible  
 Martha Fleenor  
 Margaret Ayres  
 Juanita Lindsay  
 Bonnie Brobeck  
 Dorothy Butler  
 Marie Catron  
 Lydia Chandlee  
 Almira Chase  
 Julia Chwalek  
 Dorothy Davis  
 Lucille Elliott  
 Sue Huber  
 Ora Bess Hunter  
 Carolyn Martin

Inez Merritt  
 Victoria Miller  
 Dorothy Mitchell  
 Dora Hale Mitchell  
 Charlotte O'Dell  
 Kearney Rogers  
 Katherine Smelcer  
 Jean Briscoe  
 Jane Campbell  
 Martha Butler  
 Orene Good  
 Virginia Lamie  
 Dorothy Nanney  
 Frances Quinn  
 Helen Susong  
 Gloria Wallace







# The FUTURE TEACHERS of AMERICA

## OFFICERS

**President** ..... Willard Grubb  
**Vice-Pres.**..... Elizabeth Knight  
**Secretary** ..... Georgia King  
**Treasurer** ..... Gale Keezel  
**Librarian** ..... Sarah Fink  
**Sponsors** ..... Dr. C. C. Sherrod  
 and Dr. Frank Field

## MEMBERS

William Allison  
 Jeanne Lowry  
 Harry Beckner  
 Margaret Loy  
 Tommy Boles  
 Maxine McClain  
 Dorothy Butler  
 Helen Marion  
 Hilda Copp  
 Olen Marshall  
 Martha Fleenor  
 Pauline Miller  
 Kathryn Garland  
 Lois Moody  
 Leola Henley  
 Ray Osborne  
 Scott Herrin  
 Bob Parsons  
 Orrille Huffaker  
 Kearney Rogers  
 Pearl Hurd  
 Dorothy Stout  
 Homer Isbell  
 Charlotte Swadley  
 Eleanor Keys  
 Pal Trussler  
 Laird Lewis  
 Frances Wheeler  
 Nat Lockett  
 Virginia Williams  
 Dan Zoerb

# INTERNATIONAL RELATIONS CLUB

## OFFICERS

President ..... Ray Osborne  
 Vice-President ..... Eleanor Keys  
 Secretary ..... Elizabeth Knight  
 Reporter ..... Ann King  
 Sponsor ..... Miss Maxine Mathews

## Members

Pauleene Banner  
 Harry Beckner  
 Josephine Bowers  
 Billie Card  
 Willard Grubb  
 Georgia King  
 Georgia Linville  
 Nat Lockett  
 Maxine McClain

Lillian Martin  
 Mary Milburn  
 Mary Ruth Pittillo  
 Irene Walsh  
 Betty Watson  
 Frances Wheeler  
 Virginia Williams  
 Dan Zcerb







# MIRACLE BOOK CLUB

## OFFICERS

Leader .....	Sarah Brown
President .....	Nat Lockett
Vice-President .....	Betty Bagby
Secretary .....	Georgia King
Treasurer .....	Martha Cowan
Reporter .....	Theda Rochester

## Members

William Allison  
 Herbert Bolton  
 Dorothy Butler  
 Eloise Carriger  
 Hilda Copp  
 Lena McClendon  
 Burl Depew  
 Rose Mary Driskill  
 Scott Herrin  
 Laird Lewis  
 Martha Liggett  
 Jeanne Lowry

Nelle Marable  
 Carolyn Martin  
 Ruth Milburn  
 Mary Milburn  
 Orla Phelps  
 Theda Rochester  
 Lula Smith  
 Mary Stewart  
 Fred Still  
 Charlotte Swadley  
 Virginia Williams

The Miracle Book Club, an international organization, has as its purpose the deepening of the spiritual life, not only of its members, but of all the students on the campus. The membership of the club is open to all who wish to attend the weekly Bible study periods.



# HOME ECONOMICS CLUB

## OFFICERS

**President** ..... Pearl Hurd  
**Vice-President** ..... Lucille Elliott  
**Secretary** ..... Frances Shoun  
**Reporter** ..... Billie Susong  
**Sponsors** ..... Mrs. Earnest, Miss Gordy

## Members

Bonnie Brobeck  
 Grace Buckner  
 Lyda Cable  
 Jean Campbell  
 Eloise Carriger  
 Marie Catron  
 Almira Chase  
 Margaret Collins  
 Dorothy Davis  
 Lucille Elliott  
 Jane Forgery  
 Kathryn Garland  
 Nola Gross  
 Deith Hill  
 Emma Howard  
 Madeline Hunt  
 Pearl Hurd  
 Mary Hyder

Marion Jett  
 Jean Johnson  
 Margaret Johnson  
 Ruby McKinney  
 Ruth Milburn  
 Nancy Ottenfeld  
 Hope Pearson  
 Ella Pierce  
 Elizabeth Riley  
 Frances Shoun  
 Helen Susong  
 Billie Susong  
 Charlotte Swadley  
 Anna May Watson  
 Virginia Weeks  
 Amienelle Williamson  
 Reece Winkle  
 Mary Winslow



# S. T. C. Band



# B. S. U.

# PHI BETA CHI

## OFFICERS

President ..... Ann King  
Vice-President ..... Lewis Epperson  
Secretary-Treasurer ..... Juanita Millsaps

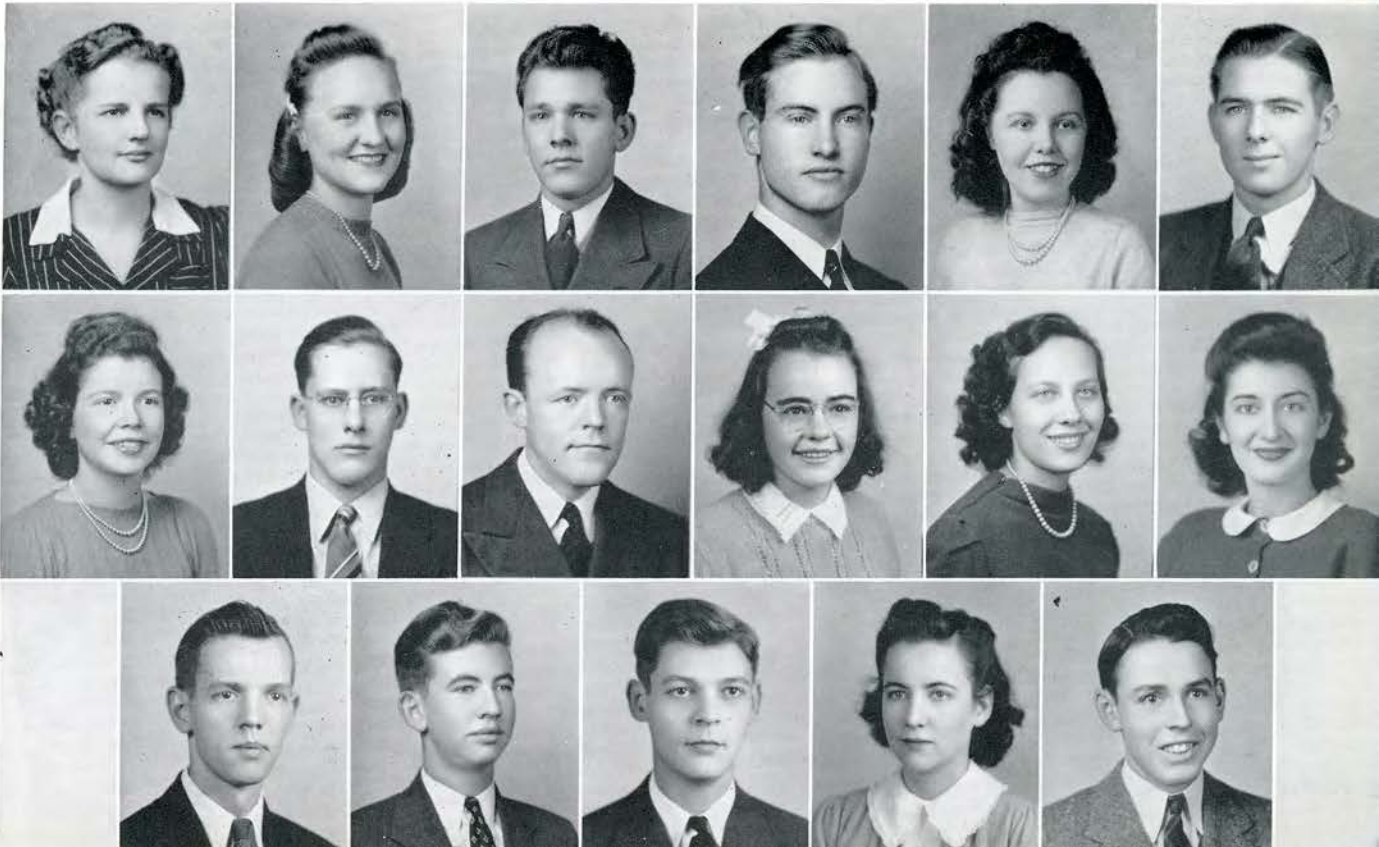
## Members

Theron Blosser  
Ralph Boy  
Bill Gardner  
Rita Groseclose  
Gordon Hendrix  
J. N. Hurst  
Albert Hyder  
Martha Liggett

Nelle Marable  
Inez Merritt  
Tom Morris  
Ray Osborne  
Warren Pierce  
Dick Stevenson  
Betty Watson  
K. B. Whetsel

## Purpose

Phi Beta Chi is a science organization composed of students who major in one or more of the fields of science: Biology, Chemistry, and Physics. The club fosters advancement in the fields of science, provides entertaining and instructive scientific programs, and promotes fellowship between science students and instructors.





# WESLEYAN FOUNDATION

## OFFICERS

President .....	Robert Parsons
Vice-President .....	Nelle Marable
Second Vice-President .....	Margaret Loy
Secretary .....	Georgia King
Treasurer .....	Gale Keezel

## Members

Herbert Bolton  
Dorothy Butler  
Eloise Carriger  
Hilda Copp  
Rosemary Driskill  
Eleanor Keys  
Mary Ann Kyker  
Laird Lewis  
Jeanne Lowry  
Nat Lockett  
Harrison Marshall  
Lillian Martin

Ruth Milburn  
Mary Milburn  
Ina Pate Miller  
Francella Redwine  
Kearney Rogers  
Helen Louise Smith  
Dick Stevenson  
Fred Still  
Tom Watkins  
Frances Wheeler  
Mary Alice Whitehead  
Aminell Williamson

## Purpose

The Wesleyan Foundation, an organization composed of Methodist students, is a part of a national Methodist Student Movement composed of two million university and college students. The purpose of the club is to promote worship, community service, world fellowship, and Christian recreation.





# Y. W. C. A.

## OFFICERS

<b>President</b> .....	Juanita Millsaps
<b>Vice-President</b> .....	Orrille Huffaker
<b>Secretary</b> .....	Pearl Hurd
<b>Treasurer</b> .....	Inez Merritt

## Purpose

The Young Women's Christian Association is composed of all young women living in Carter Hall. This organization aims to promote the spirit of Christ on the campus. At Christmas the members entertained a large number of unfortunate children. Every Sunday afternoon vespers are held, and on Wednesday night a devotional meeting is conducted. The Y.W.C.A. also furnishes the daily paper and a large number of the best magazines for the girls in Carter Hall and continually adds very valuable improvements to this dormitory.





# GIRLS' GLEE CLUB



# STC CHOIR

## *Glee Club*

Rita Lou Bartley, Billie Card, Marie Catron, Alice Hefner, Mamie C. Killian, Doris Meredith, Ruth Milburn, Mary Parsons, Helen Louise Smith, Gay Wasson, Aminelle Williamson, Mary Kathrine Brown, Irene Cardwell, Phyllis Clay, Martha Cowan, Gertrude Davis, Dorothy Dewald, Clara Hart, Dorothy Harlley, Kathleen Lewis, Madaline McClain, Lillian Martin, Louise Moore, Louise Oliver, Jo Sherwood, Helen Taylor, Martha Taylor, Wanda Walker, Mary Wall, Ruth Emmert, Sara Kink, Florence Baird, Rosemary Driskill, Kathleen Early, Georgia King, Betty Larrish, Mary Louise Meredith, Louise Orr, Martha Sammons, Natalie Shoun, Katherine Smelcer, Geraldine Trivett, Gloria Wallace, Nanabelle Whaley, Kearney Rogers.

## *Choir*

Rita Lou Bartley, Billie Card, Hilda Copp, Dorothy Dewald, Alice Hefner, Kathleen Lewis, Helen Louise Smith, William Allison, Phillip Brumit, Burl Depew, Verlin King, Glen Milburn, Rick Rosson, C. M. Williamson, Dan Zoerb, Rosemary Driskill, Mary Louise Meredith, Katherine Smelcer, Geraldine Trivett, Gloria Wallace, Tommy Boles, John Burrus, Roland Campbell, Laird Lewis, Edward McFaddin, Olen Marshall, Dwight Tilson, Vowe Tilson, Ruth Emmert, Sarah Fink.



# CIVILIAN PILOT TRAINING

## Secondary Training

George Saylor  
Ford Bailey  
Ernest Howell  
Leon Cox  
Floyd Childers  
John Miller  
Fred Zehring  
Ben Fragans  
Jack Logan  
Doc Misserole

## Primary Training

Lyon Agee  
Jack Brittain  
Guy Blackwell  
Joe Summers  
W. O. Culver  
Charles Hammitt  
Joe Goforth  
J. B. McKamsy  
Niles Hamilton  
Bill Coleman







# CARTER HALL STUDENT GOVERNMENT

## OFFICERS

President .....	Mary Ruth Pittillo
First Vice-President .....	Orrille Huffaker
Second Vice-President .....	Dorothy Butler
Secretary .....	Eleanor Keys
Treasurer .....	Juanita Millsaps
Sponsors .....	Miss Ella Ross, Mrs. Robert Imboden

## Floor Representatives

Margaret Ayres	Louise Moore
Helen Henry	Aline Pickle
Nancy Isbell	Billie Susong
Gale Keezel	Helen Susong
Anne King	

## Function

The Student Government Association of Carter Hall was organized in the spring of 1941. At the end of its first year of existence, it is functioning successfully.

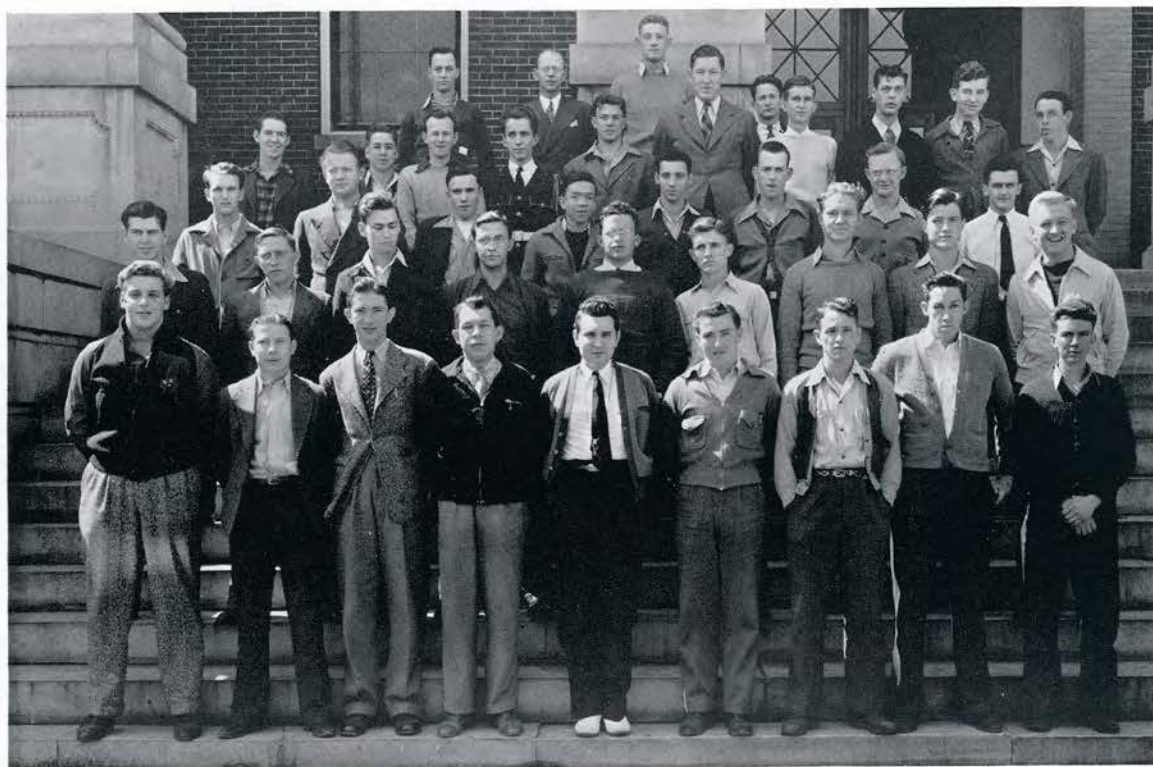
# *The* PESTALLOZZIANS

## OFFICERS

President ..... Bill Williamson  
Vice-President ..... Jimmy Ellis  
Secretary ..... Milburn Hopkins

## Purpose

The Pestalozzian Society is composed of all young men who reside in Ritter Hall. The organization has as its aims cooperation, wholesome fellowship and ultimately a more enjoyable college life for all residents.









# *Features*





## *Who's Who at S. T. C.*

**SENIORS:** "Chub" Bolton, Dorothy Butler, Scott Herrin, Eleanor Keys, Elizabeth Knight, Juanita Millsaps, Kearney Rogers, and Ellis Sabin.

**JUNIORS:** Georgia King, Nat Lockett, Jeanne Lowry, Mary Ruth Pitillo, Virginia Williams.

Chosen by senior class and faculty

*Five*

# MOST BEAUTIFUL

*Girls*

Chosen by student body



Mary Ruth Pittillo



Kathryn Ryan



Orrille Huffaker



Martha Fleenor



Ruth Angel



# DEPART

## Chosen by Faculty

**Art**—Maxine McClain

**Biological Science**—Ann King

**English**—Eleanor Keys

**History**—Pauleene Banner

**Home Economics**—Pearl Hurd

**Industrial Arts**—Thomas Lyle

**Languages**—Hilda Roesel

**Mathematics**—Ralph Boy

**Music**—Kearney Rogers

**Physical Education and Health**—  
Dorothy Butler

**Physical Science**—Dick Stevenson

**Social Sciences**—Vesta Mooneyhan



# MENTAL HONORS







# CAMPUS PERSONALITIES

Chosen by student body

**Most Popular**—Kathryn Ryan, Horace Parsley

**Best All-Round**—Jeanne Lowry, Scott Herrin

**Best Personality**—Harrison Marshall

**Most Versatile Student**—Ann King

# CAMPUS SCENES

The following scenes represent an effort to depict typical pictures on the campus of State Teachers—to present a fleeting glimpse of the "other side" of our life.







*Campus Life At Tennessee State Teachers College*







*Compliments Of*  
***American Bemberg***  
*And*  
***North American Rayon Corp.***

---

*Compliments*  
*Of*  
***Charley Cargille Studio***  
*We are proud to have taken the pictures*  
*for this publication*

## Van Dyke Studio

Where Photography is an Art

We specialize in portraits and

The College Year Book

307 South Roan Street

Phone 71

Johnson City

Tennessee

*Compliments of*

## HAMILTON

## National Bank

of

JOHNSON CITY

EAT

**Pet Ice Cream**

"A Health Food"

DRINK

**Pet Pasteurized Milk**

"of Superior Flavor"

## ***PET DAIRY PRODUCTS COMPANY***

**106 South Boone Street**

**Phone 5153**



You're Most Likely to Find it at **King's**

We invite you . . . to test for yourself this quotation that comes from the lips of many a smart "Teacher" . . . whether your want is a high fashion or one of the minor everyday necessities of life.

# KING'S

East Tennessee's Most Complete Department Store

"Where Those Who Know Buy Their Clothes"

---

## KISER FUNERAL HOME



Agents — Southern Mutual Association

Knoxville, Tennessee

Operating — Kiser Funeral Service

Association



Phone 5200

NUNN - BUSH SHOES

DOBBS HATS

## HANNAH'S

FOR GOOD CLOTHES

ARROW SHIRTS

VARSITY TOWN CLOTHES

ALWAYS STOP AT  
**DIXIE BARBECUE**

Johnson City, Tennessee

"Home of Delicious Sandwiches—

Meeting Place of All College Boys and Girls"

There's nothing  
like **GAS** for  
REFRIGERATION · WATER HEATING  
COOKING · HOUSE HEATING

Washington County Gas Company

Compliments of

**Parks - Belk  
Company**

Johnson City     :-     Tennessee

Compliments of

**Wofford Brothers, Inc.**

GENERAL INSURANCE

Johnson City     -     -     Tennessee



Compliments of

**GENERAL SHALE PRODUCTS CORPORATION**

Manufacturers of

ARTISTIC FACING BRICK

COMMON BRICK

Hollow Building Tile and

**"SPEEDBRIK"**

Executive and General Sales Offices

Johnson City, Tennessee



**G. E. TREADWAY & SONS**

Avery Farm Machinery, Garden and Field Seeds

Tuxedo Feeds and V. C. Fertilizer

114 Jobe St.—Johnson City, Tenn.—Phone 439

---

Compliments of

**Jennings Candy Co.**

Johnson City

Tennessee

---

DOSSERS

HEADQUARTERS

for

Graduation Gifts

---

**H. E. HART**

The Shop of Beautiful Gifts

Genuine  
"Orange Blossom"

ENGAGEMENT AND WEDDING RINGS  
BY TRAUB

Ask for your copy of "Orange Blossoms," our lovely Bride's book

214 Main St. Johnson City, Tenn.

---

**Abernathy Plumbing Co.**

Plumbing, Heating, Tinning, Roofing,  
Guttering, Etc.

**All work Guaranteed**

124 Spring Street

Phone 207

---

**SECURITY FEED AND SEED CO.**

JOHNSON CITY, TENNESSEE

Phone 5254

---

Congratulations

TENNESSEE STATE

**Harris Manufacturing Co.**

---

Compliments of

**Ira A. Watson Company**

Johnson City

Tennessee

---

***FIELDS INC.***

---

Compliments of

**ROBERTSON REALTY CO.**

---

**Johnson City Trading Co.**

Sam Taylor, Owner

133 West Main Street

Compliments of

## SCOTT'S GROCERY

The Student's Store

Phone 568



Compliments of

## *Johnson City Transit Co., Inc.*

We Are Proud of Teachers College  
Proud, too, of the Fact That We Have  
Been Jewelers in Johnson City for  
55 Years.

## BECKNER'S

DIAMONDS WATCHES JEWELRY

---

Compliments of

### Johnson City Foundry and Machine Company

Gray Iron and Alloy  
Iron Castings Structural Steel

Miscellaneous and  
Ornamental Iron Work  
Special Machine Work

Johnson City - - - Tennessee

---

Compliments of

### S. H. KRESS & CO.

Johnson City - - - Tennessee

---

Compliments of

### ALLEN CLEANERS

Phone 902

---

### Lyle Furniture Co.

KELVINATOR APPLIANCES  
ZENITH RADIOS  
COPPER CLAD RANGES

Phone 271

123-125 Spring St. Johnson City

---

### U. S. LOAN OFFICE

B. J. Krupnick

Jewelry, Luggage, Musical Instruments



**Graduate Summer School For COLLEGE PEOPLE**

June 1 to August 21  
Intensive Training

CIVIL SERVICE and BUSINESS  
For Information Write

**ELIZABETHTON SCHOOL OF BUSINESS**

Accredited by the National Association of Accredited Commercial Schools

ELIZABETHTON TENNESSEE

**BOLTON BROTHERS**

Plumbing & Heating

Telephone 827      124 E. Market St.

Johnson City      Tennessee

Compliments of

HOME FEDERAL  
SAVINGS & LOAN  
COMPANY

Johnson City, Tennessee

***FRENCH DRY CLEANERS***

Incorporated

"Leading Cleaners"

Main Office and Plant—102 Wilson Ave.

Branch Offices — 102 S. Roan and  
Corner Market and  
Watauga.

Phone      5108

Modern Metal Kitchens  
Floor and Wall Tile  
Residential, Institutional and  
Commercial Equipment

**E. A. LANCASTER, JR.**

Inc.

Johnson City      Tennessee

Phone 5195

Compliments of

**THE SEVIER THEATER**

---

"WHERE EVERYBODY GOES"

**Johnson City's Home Owned Theater**

---

**Get Your Flowers From . . .**

**GUNNAR TEILMANN  
& SON**

JOHNSON CITY'S LEADING  
FLORISTS

318 E. Main St. Phone 511

---

Compliments of

**LIBERTY LUMBER CO.**

**Erwin, Tennessee**

Complete Line of Building Materials

---

**Industrial Loom And  
Finance Corporation**

325½ E. Main St. Johnson City, Tenn.

---

**CASH & HAUL  
WHOLESALE GROCERY CO.**

Johnson City - - - Tennessee

Compliments of

**JOHNSON CITY STEAM**

**LAUNDRY**

Johnson City - - - Tennessee

---

Compliments of

**JOHN SEVIER HOTEL**

One of East Tennessee's Leading  
Hotels

**EXCELLENT COFFEE SHOP**

M. T. McArthur, Manager

---

Compliments of

**The**

**MAJESTIC THEATRE**



**CREATORS OF DISTINCTIVE ANNUALS**

---



---

**ARCHER & SMITH PRINTING CO.**

KNOXVILLE

— TENNESSEE

**CHARLOTTE ENGRAVING  
COMPANY**

*CHARLOTTE, N. CAROLINA*



*"South's Finest Annual Engravers - since 1915"*

Compliments of

**Sterchi Bros. Stores, Inc.**

222 - 226 E. Main St.

Johnson City

Tennessee



**M A S E N G I L L ' S**

Smart Apparel

**DIAMOND CAB CO.**

Day and night service

Telephone 5206

116 Buffalo Street



3 Good times  
To Enjoy Life  
More  
At 10-2-  
and 4

Compliments of

**A. R. BROWN & CO**

Erwin

Tennessee

**Hannah Brothers., Inc.**

WHOLESALE DRY GOODS

NOTIONS AND FURNISHINGS

Compliments of

**I. & P. GROCERY**

The Independent and Profitable Store  
Cold Meats, Groceries and Vegetables  
126 Spring St. Johnson City, Tenn.

**Prator-Wilson Pharmacy**

A Good Drug Store

Market at Watauga

Phone 5122

COMPLIMENTS OF

**Lyle Bros. Service Station**

COMPLIMENTS OF

**SMYTHE ELECTRIC CO.**

Johnson City, Tennessee

Compliments of

**C. L. DeBORD MILLS**

Manufacturers of

WHITE DOT FLOUR

Johnson City - - - Tennessee



Compliments of

# *Johnson City Mills*

Johnson City Tennessee

---

## **UNAKA STORES INC.**

"The Quality Store"

Erwin Tennessee

---

Compliments of

# **Palace Bowling Alley**

## *Booze Bros.*

East Tennessee's Most Beautiful Shoe  
Store

---

### **Service Dry Cleaners**

"The College Cleaners"

413 W. Pine Street

Johnson City Tennessee

---

Compliments of

### **Singer Sewing Machine**

318 E. Main Street

Johnson City Tennessee

---

Compliments of

### **MECCA RESTAURANT**

"We Never Close"

---

## *Dinty Moore's*

### *Cafe*

A FIRST CLASS PLACE TO DINE

247 Main St. Johnson City

P. M. Moore, Proprietor

COMPLIMENTS OF

**PEOPLE'S BANK**

Member of Federal Deposit Insurance Corporation

JOHNSON CITY - - - - - TENNESSEE

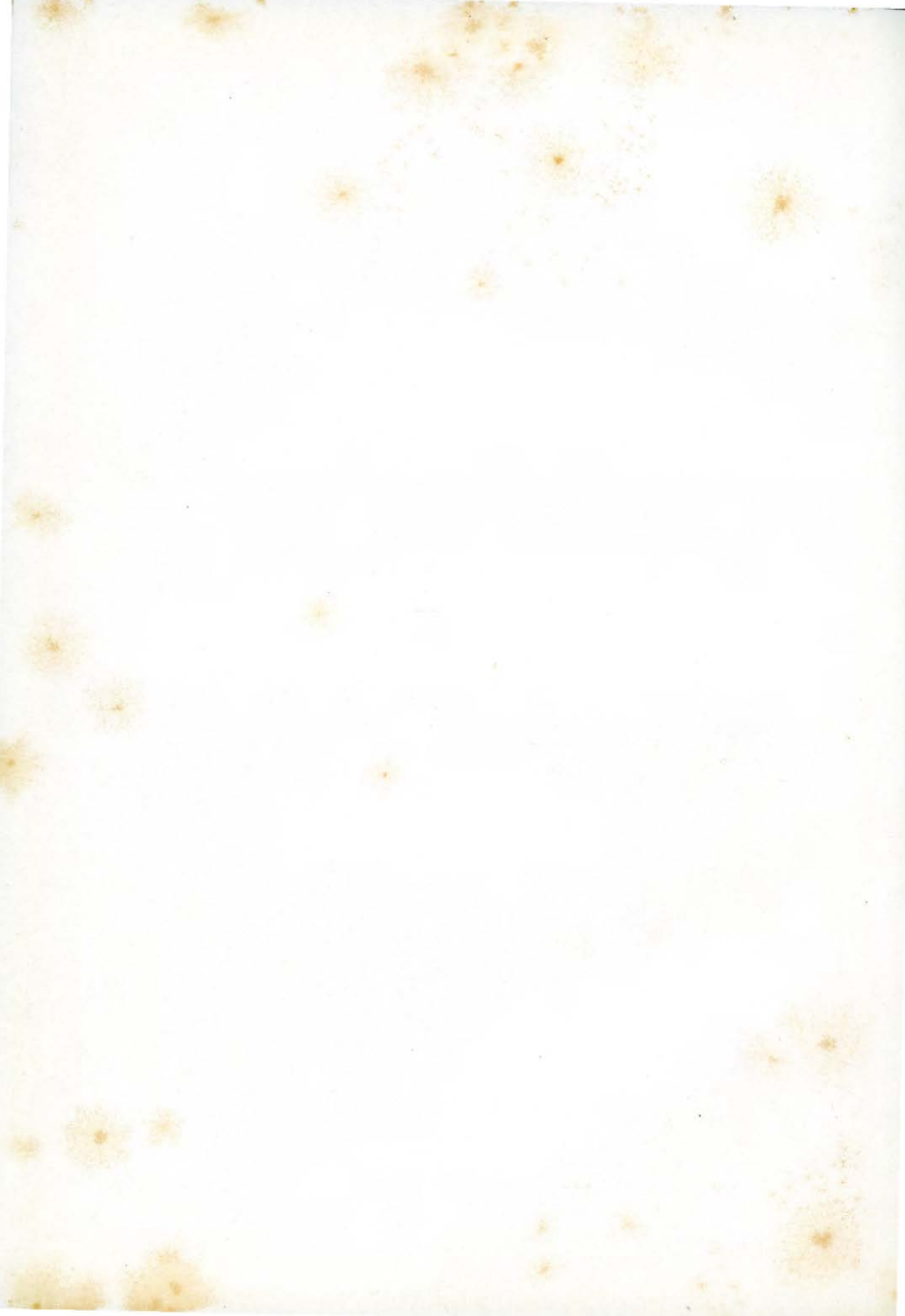
*...Autographs...*

















EAST TENN  
JOHNSC

LIBRARY

EAST TENNESSEE STATE UNIVERSITY



3 6302 0074 9758 7





EAST TENNESSEE STATE UNIVERSITY



3 6302 0074 9758 7