

The current issue and full text archive of this journal is available on Emerald Insight at:  
[www.emeraldinsight.com/2059-5794.htm](http://www.emeraldinsight.com/2059-5794.htm)

# Promoting perceived insider status of indigenous employees

## A review within the psychological contract framework

Joanie Caron and Hugo Asselin

*School of Indigenous Studies,*

*Université du Québec en Abitibi-Témiscamingue, Rouyn-Noranda, Canada*

Jean-Michel Beaudoin

*Département des Sciences du bois et de la forêt,*

*Université Laval, Quebec City, Canada, and*

Doïna Muresanu

*Département des Sciences de la gestion, Université du Québec en Abitibi-Témiscamingue,  
 Rouyn-Noranda, Canada*

Perceived  
insider status  
of indigenous  
employees

609

Received 2 February 2019

Revised 5 July 2019

6 October 2019

Accepted 9 October 2019

### Abstract

**Purpose** – While companies in developed countries are increasingly turning to indigenous employees, integration measures have met with mixed results. Low integration can lead to breach of the psychological contract, i.e. perceived mutual obligations between employee and employer. The purpose of this paper is to identify how leadership and organizational integration measures can be implemented to promote the perceived insider status (PIS) of indigenous employees, thereby fostering fulfillment of the psychological contract.

**Design/methodology/approach** – A search for relevant literature yielded 128 texts used to identify integration measures at the level of employee–supervisor relationships (leader–member exchanges, inclusive leadership) and at the level of employee–organization relationships (perceived organizational support, pro-diversity practices).

**Findings** – Measures related to leadership included recruiting qualified leaders, understanding cultural particularities, integrating diverse contributions and welcoming questions and challenges. Organizational measures included reaching a critical mass of indigenous employees, promoting equity and participation, developing skills, assigning meaningful tasks, maintaining good work relationships, facilitating work-life balance, providing employment security, fostering support from communities and monitoring practices.

**Originality/value** – While PIS has been studied in western and culturally diverse contexts, it has received less attention in indigenous contexts. Yet, some indigenous cultural values are incompatible with the basic assumptions of mainstream theories. Furthermore, colonial policies and capitalist development have severely impacted traditional indigenous economic systems. Consequently, indigenous people are facing many barriers to employment in ways that often differ from the experiences of other minority groups.

**Keywords** Employment, Diversity management, Psychological contract, Indigenous people, Perceived insider status

**Paper type** Research paper

### Introduction

Companies in developed countries are increasingly turning to a diverse workforce – including indigenous[1] employees – to adjust to legal reforms, counter labor scarcity or favor social acceptability of their projects (Brereton and Parmenter, 2008; Lucas and Knights, 2014; Russell, 2013). Job creation is often at the heart of negotiations between indigenous communities and extractive industries, as part of impact and benefit agreements, which are required for project



© Joanie Caron, Hugo Asselin, Jean-Michel Beaudoin and Doïna Muresanu. Published by Emerald Publishing Limited. This article is published under the Creative Commons Attribution (CC BY 4.0) licence. Anyone may reproduce, distribute, translate and create derivative works of this article (for both commercial and non-commercial purposes), subject to full attribution to the original publication and authors. The full terms of this licence may be seen at <http://creativecommons.org/licenses/by/4.0/legalcode>

Cross Cultural & Strategic

Management

Vol. 26 No. 4, 2019

pp. 609-638

Emerald Publishing Limited

2059-5794

DOI 10.1108/CCSM-02-2019-0031

approval in some areas (McCreary *et al.*, 2016; O'Faircheallaigh, 2006, 2013). Governments and industries show a growing will to increase the socioeconomic status of indigenous communities, notably by overcoming barriers to employment (Brereton and Parmenter, 2008; Haar *et al.*, 2018).

Generally young, growing and available for work, indigenous populations are increasingly considered a potential solution to labor scarcity (Brereton and Parmenter, 2008; Ewing *et al.*, 2017; Haley and Fisher, 2014; Maru and Davies, 2011). In the natural resources sector, companies must consider indigenous people as key stakeholders in order to obtain a "social licence to operate," i.e. the on-going acceptance and approval of a project by local community members (Prno and Slocombe, 2012; Thomson and Boutilier, 2011). In this sense, providing jobs to indigenous people and maintaining good relationships with indigenous communities favor social acceptability (Owen, 2016; Russell, 2013; Sammartino *et al.*, 2003). However, while progress is being made, measures to integrate indigenous employees to the workforce still do not yield the expected results, as many qualified indigenous people remain unemployed (Biddle *et al.*, 2009; Kalb *et al.*, 2014; Parkins *et al.*, 2006; Pearson and Daff, 2011, 2013).

If properly managed, the skills, knowledge and expertise of a diversified workforce can generate a competitive advantage (Van Knippenberg *et al.*, 2007), providing higher levels of performance, creativity and innovation (Crawley and Sinclair, 2003; Groyberg and Connolly, 2013). While employees show a lower turnover rate when they perceive that their organization applies an ethical management approach (McKay *et al.*, 2007; Stewart *et al.*, 2011), increased diversity within the work group can jeopardize successful employee integration (Randel *et al.*, 2018). Members of cultural minorities are more susceptible to marginalization (Pelled *et al.*, 1999; Tang *et al.*, 2017) and inappropriate behaviors (Biddle *et al.*, 2013; Rerden and Guerin, 2015), including discrimination, prejudice, racism and violence (Goldman *et al.*, 2006; Shore *et al.*, 2009; Stewart *et al.*, 2011). Discrimination is not limited to relationships between colleagues and can also come from supervisors. Employees from cultural minorities sometimes have less access to support, training, information, decision processes and promotion opportunities (Mor Barak, 2017; Tang *et al.*, 2017), consequently lowering their sense of integration within the organization (Pelled *et al.*, 1999) and contributing to breach the psychological contract, i.e. the perceptions of mutual obligations between employee and employer (Coyle-Sapiro and Parzefall, 2005; Rousseau, 1989). Employees from cultural minorities are thus more susceptible to stress and dissatisfaction at work, contributing to reduced well-being and higher absenteeism (Gee, 2008; Mor Barak *et al.*, 2001) and generating costs for the employers (Herring, 2009).

To benefit from a diversified workforce, companies should provide an inclusive work environment (Oswick and Noon, 2014; Shore *et al.*, 2011). Indeed, employees' perceived insider status (PIS) is positively related to professional satisfaction, performance, retention and well-being (Mor Barak and Levin, 2002; Nishii and Mayer, 2009; Stamper and Masterson, 2002). PIS promotes the adoption of organizational citizenship behaviors, such as altruism, mutual assistance, conflict resolution and obedience to organizational norms (Chompookum and Brooklyn Derr, 2004; Van Dyne and LePine, 1998). Organizational citizenship behaviors increase efficiency, productivity and innovation within the organization (Babcock-Roberson and Strickland, 2010; Mujtaba and Afza, 2011; Organ, 1997).

While PIS has been studied in western (Rousseau and Schalk, 2000) and culturally diverse contexts (Andrews and Ashworth, 2015; Findler *et al.*, 2007; Guerrero *et al.*, 2013), it has received less attention in indigenous contexts (Brougham and Haar, 2012). Yet, some indigenous cultural values are often incompatible with the basic assumptions of mainstream theories, especially in terms of entrepreneurship (Peredo *et al.*, 2004), egalitarianism, sharing, kinship ties and communal activity (Dana and Anderson, 2011). The lack of knowledge and consideration for indigenous traditions, cultures and contexts is one of the stumbling blocks to implementing a work climate conducive to integration (Haar and Brougham, 2013; Pearson and Daff, 2013; Purdie *et al.*, 2006).

Several indigenous cultures are collectivist rather than individualistic (Haar *et al.*, 2018; Haar and Staniland, 2016; Redpath and Nielsen, 1997) and they favor employment opportunities that will benefit their communities (Haley and Fisher, 2014; Hobart, 1981; Johnson and Basile, 2006; Kunz *et al.*, 2000; Lawrence, 2005; Loxton *et al.*, 2012; McRae-Williams and Gerritsen, 2010; Pearson and Daff, 2013; Ruwhiu and Elkin, 2016; Trigger, 2002). When seeking for a job, indigenous people rely more on personal connections than on other methods (Caron *et al.*, 2019; Haley and Fisher, 2014; Hunter and Gray, 2006; Maru and Davies, 2011). Furthermore, indigenous cultures have a strong relationship to the land and therefore give a higher priority to traditional activities than to wage work (Haley and Fisher, 2014; Pearson and Daff, 2013; Young and McDermott, 1988), in addition to focusing on short-term needs (Caron *et al.*, 2019; Haley and Fisher, 2014). Indigenous teaching and learning styles are more based on observation, experiential learning, and social interaction than western approaches (Barnhardt, 2005; Kawagley, 2006; Walker, 1989).

Decades of colonial policies and the hegemony of capitalist development have severely impacted traditional indigenous economic systems, particularly in Australia and North America (Daschuk, 2013; Dockery and Milsom, 2007; Milloy, 2008; Trigger *et al.*, 1996). The consequences of this economic and cultural upheaval will last for many generations (Dockery and Milsom, 2007), making it hard for many indigenous job seekers to enter the workforce and remain in the job market (Brereton and Parmenter, 2008; Pearson and Daff, 2013; Russell, 2013; Thiessen, 2016). Hence, indigenous people face barriers to employment in ways that often differ from the experiences of other minority groups, and previous studies have emphasized the need to improve employment policies and practices that specifically address integration of indigenous people to the labor market (Dockery and Milsom, 2007; Purdie *et al.*, 2006).

The barriers to employment faced by indigenous people include poor living conditions (Commonwealth of Australia, 2005; Purdie *et al.*, 2006), high crime environments, speaking a different language and being largely disregarded by governments and industries (Caron *et al.*, 2019; Purdie *et al.*, 2006). These barriers are compounded by lack of self-confidence, family obligations and lack of skill or work experience (Dockery and Milsom, 2007; Hunter and Gray, 2001; Purdie *et al.*, 2006). Moreover, distance between community and workplace, low access to training opportunities, reticence to renounce to traditional activities, lack of familiarity with the industrial way of life, importance given to productivity by supervisors and discriminatory or inappropriate behaviors complicate the integration of indigenous workers (Haley and Fisher, 2014; Loxton, Schirmer, and Kanowski, 2012; O'Faircheallaigh, 2006; Pearson and Daff, 2013; Purdie *et al.*, 2006).

Given the desire of many indigenous people to improve their socioeconomic status (Anderson *et al.*, 2006) and given the growing will of companies to integrate indigenous people into their workforce, this review aimed to identify how leadership and organizational measures can be implemented to promote the PIS of indigenous employees, thereby favoring fulfillment of the psychological contract.

### Conceptual framework

Employers and employees are linked by a psychological contract, i.e. they have perceptions of mutual obligations toward each other. Building on previous research on human resources management, this review is based on the following assumptions: to fulfill their side of the psychological contract, employers provide appropriate work conditions reflected by perceived organizational support and pro-diversity practices where this applies; employers also make sure that supervisors display inclusive leadership and are engaged with employees in fruitful leader-member exchanges; perceived organizational support, pro-diversity practices, leader-member exchanges and inclusive leadership promote the PIS of indigenous employees, who in turn display organizational citizenship behaviors, hence fulfilling their side of the psychological contract (Figure 1).

*Psychological contract*

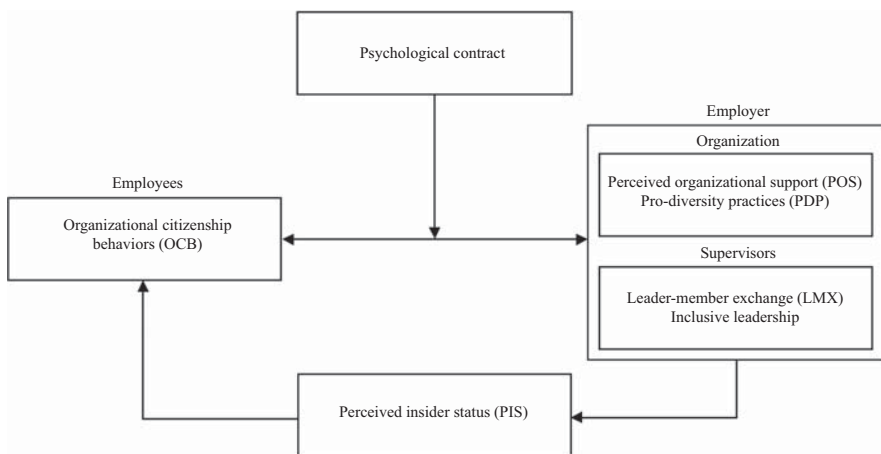
The psychological contract refers to perceived mutual obligations between employee and employer (Coyle-Sapiro and Parzefall, 2005; Rousseau, 1989). These obligations can be implicit or explicit and need not be unanimously accepted by both parties for the contract to be in effect (Kotter, 1973; Robinson and Rousseau, 1994). For the employee, the perceived obligations of the employer may include employment security, training, remuneration and career progression (Robinson and Rousseau, 1994). Employees feel more important within the organization when they perceive the employer's obligations are being met (Pearce and Randel, 2004; Stamper and Masterson, 2002). For the employer, the perceived obligations of the employee may include commitment and trust toward the organization, display of organizational citizenship behaviors and having no intention to leave (Coyle-Shapiro and Kessler, 2000; Coyle-Shapiro and Parzefall, 2005; Robinson, 1996; Robinson and Morrison, 1995; Turnley and Feldman, 1999). When fulfilled, the psychological contract is beneficial to both parties (Shore and Tetrick, 1994). Breach of the psychological contract from either side will have negative consequences (Turnley and Feldman, 1999). If it is the employer that breaches the psychological contract, employees can feel frustration or anger (Triana *et al.*, 2010), express dissatisfaction, limit their commitment, lose motivation, demonstrate less organizational citizenship behaviors and, ultimately, leave the company (Chen *et al.*, 2008; Farrell, 1983). When the breach comes from the employees, employers can reduce support, leading to deterioration of the relationships between supervisors and employees (Chen *et al.*, 2008; Mujtaba and Afza, 2011).

Based on the focus, time frame, stability, scope, and tangibility of perceived obligations, psychological contracts have been classified into two main categories: transactional and relational (Macneil, 1985; Rousseau, 1990). While transactional contracts are characterized by economically oriented perceived obligations that occur during a specific period of time (e.g. competitive wages), relational contracts are rather based on open-ended, non-economic perceived obligations focused on maintaining the long-term relationship between employer and employee (e.g. training and development) (Jensen *et al.*, 2010; Rousseau, 1990).

*Perceived insider status (PIS)*

The PIS refers to the degree to which an employee considers having earned a "personal space" and being accepted within their work organization (Masterson and Stamper, 2003; Stamper and Masterson, 2002). PIS is an indicator of successful integration, as it reflects positive work

**Figure 1.** Proposed conceptual framework showing how the fulfillment of the psychological contract by the employer (perceived organizational support, pro-diversity practices, leader-member exchange, inclusive leadership) favors perceived insider status by the employees, who then fulfill the psychological contract by adopting organizational citizenship behaviors



experience and psychological satisfaction (Kim *et al.*, 2010). Employees with PIS feel they are an important part of the organization and have a high sense of belonging (Masterson and Stamper, 2003; Pelled *et al.*, 1999; Shore *et al.*, 2011). PIS generates many positive benefits, as it favors acceptance of responsibilities, respect of norms, performance, professional satisfaction, retention, well-being in the workplace, creativity and organizational citizenship behaviors (Chen and Tang, 2018; Findler *et al.*, 2007; Horng *et al.*, 2016). Consequently, PIS reinforces the quality of the social exchange between the employees and the organization (Chen and Tang, 2018), and favors fulfillment of the psychological contract (Coyle-Shapiro and Parzefall, 2005). PIS is mediated by supervisors through leader-member exchanges and inclusive leadership (Katrinli *et al.*, 2011; Wang *et al.*, 2010), and by the organization through perceived organizational support (Ding and Shen, 2017; Hui *et al.*, 2015; Stamper and Masterson, 2002) and pro-diversity practices (Guerrero *et al.*, 2013).

#### *Leader-member exchanges and inclusive leadership*

The supervisor is in charge of implementing the policies and procedures of the organization and to ensure an appropriate work environment; as such s/he is at the forefront of the employee–organization relationship (Liden *et al.*, 2004; Zaccaro *et al.*, 2001). Quality of the relationships between employees and supervisors can be expressed through the concept of leader-member exchanges (Schyns and Day, 2010; Wayne *et al.*, 2002). Quality exchanges are characterized by open communication, mutual trust, respect, support, loyalty and affection (Graen and Uhl-Bien, 1995; Liden *et al.*, 1997). Quality of leader-member exchanges can vary from one employee to another within a work group (Ellemers *et al.*, 2004; Graen and Uhl-Bien, 1995; Lee *et al.*, 2007), and such variation can generate conflict (Boies and Howell, 2006; Hooper and Martin, 2008; Stewart and Johnson, 2009), affect employment satisfaction, commitment, well-being and, in turn, performance (Hooper and Martin, 2008; Schyns, 2006). Inclusive leadership is complementary to leader-member exchanges in favoring PIS, particularly in contexts of cultural diversity (Randel *et al.*, 2018; Shore *et al.*, 2011). Inclusive leadership includes a range of behaviors that simultaneously promote employees' uniqueness and sense of belonging, integrating all members of the work group and supporting their various contributions and abilities (Randel *et al.*, 2018).

#### *Perceived organizational support*

Perceived organizational support relates to the relationship between employee and organization (Wayne *et al.*, 2002). It is the perception by the employees of the degree to which the organization appreciates their contribution, worries about their well-being, and is committed to them (Eisenberger *et al.*, 1986; Graen *et al.*, 1972). The support measures deployed by an organization contribute to establish a feeling of being valued (Eisenberger *et al.*, 1997) and important (Masterson and Stamper, 2003). Although employees can feel that employers value their contribution without necessarily perceiving themselves as insiders (Stamper and Masterson, 2002), increasing POS has been shown to favor PIS (Hui *et al.*, 2015; Stamper and Masterson, 2002; Wayne *et al.*, 1997) and adoption of organizational citizenship behaviors (Eisenberger *et al.*, 1986; Rhoades and Eisenberger, 2002; Wayne *et al.*, 2002).

#### *Pro-diversity practices*

Defined as the measures implemented by organizations to develop perceptions of fair human resource policies and to integrate cultural minorities, pro-diversity practices are positively related to PIS (Guerrero *et al.*, 2013). By itself, diversity does not necessarily bring advantages without additional conditions being met (Ferdman, 2014). Cultural differences need to be reconciled (Chesley, 2016) and diversity management needs to be anchored in an inclusive culture, described as an “organizational environment that allows people with

multiple backgrounds, mindsets and ways of thinking to work effectively together and to perform to their highest potential in order to achieve organizational objectives based on sound principles” (Pless Maak, 2004, p. 130). Inclusion is defined as “the degree to which an employee perceives that he or she is an esteemed member of the work group through experiencing treatment that satisfies his or her needs for belongingness and uniqueness” (Shore *et al.*, 2011, p. 1265). Pro-diversity practices promote bilateral fulfillment of the psychological contract as they are positively related to employee commitment (Downey *et al.*, 2015), as they feel valued and that they work for a responsible employer, concerned of their well-being (Andrews and Ashworth, 2015; Guerrero *et al.*, 2013). It is worth noting that pro-diversity practices are only positively related to PIS if leader-member exchanges are of high quality (Guerrero *et al.*, 2013).

#### *Collectivism as an indigenous cultural trait*

In cross-cultural organizations, the alignment of human resource management processes with the cultural values of employees influences job satisfaction, work motivation, organizational citizenship behaviors, teamwork, as well as fulfillment of the psychological contract (Gelfand *et al.*, 2007). Hence, cultural particularities of employees must be considered by employers to implement relevant and inclusive practices and to adopt coherent behaviors (Haar and Brougham, 2011; Ramamoorthy and Carroll, 1998; Stoermer *et al.*, 2016). A commonly used definition of culture was coined by British anthropologist Edward B. Tylor in 1871 as “that complex whole which includes knowledge, belief, arts, morals, law, custom and any other capabilities and habits acquired by [a human] as a member of society” (Gullestrup, 2006, p. 32). While a culture can be characterized in many ways (Hofstede, 2003; Stoermer *et al.*, 2016), the individualistic/collectivist distinction has garnered most attention from scientists conducting research on PIS and organizational citizenship behaviors (Gelfand *et al.*, 2007; Haar *et al.*, 2018; Harris *et al.*, 2016; Hofstede, 1984; Hui *et al.*, 2015; Wang *et al.*, 2017). In collectivist cultures – including many indigenous cultures (Haar *et al.*, 2018; Haar and Staniland, 2016; Redpath and Nielsen, 1997) – employees seek to meet group objectives, to preserve harmony and give high importance to relationships, customs and traditions, whereas in individualistic cultures employees are more inclined to satisfy their own interests, consider themselves autonomous and central to decision making, have a competitive spirit, and communicate less (Fitzsimmons and Stamper, 2014; Hofstede, 1984, 2003; Ramamoorthy and Carroll, 1998). As PIS is about group objectives and interests – belongingness, equity and empathy (Nishii, 2013; Pless and Maak, 2004) – it is more compatible with a collectivist standpoint (Haar *et al.*, 2018; Hui *et al.*, 2015; Wang *et al.*, 2017).

Fulfillment of the psychological contract is linked to organizational citizenship behaviors in non-western collectivist cultures (Hui *et al.*, 2004; Kickul *et al.*, 2004). Moreover, collectivism has a moderating effect on the relationship between PIS and organizational citizenship behaviors: highly-collectivist employees show more organizational citizenship behaviors if they perceive organizational inclusion, and are more motivated to help their supervisor or organization reach their objectives (Hui *et al.*, 2015). Encouraging collectivism and supporting cultural identity in the workplace not only promote organizational citizenship behaviors (Haar and Brougham, 2011; Kuntz *et al.*, 2014), but also mental health of indigenous employees (Brougham and Haar, 2013), leadership (Pillai and Meindl, 1998), professional satisfaction (Haar and Brougham, 2013; Haar and Staniland, 2016; Harris *et al.*, 2016; Lai *et al.*, 2018), self-determination (McIntosh *et al.*, 2004), authenticity, pride, loyalty (Haar and Brougham, 2011), as well as global organizational performance (Haar and Delaney, 2009). Globally, cultural well-being of indigenous employees promotes good relationships with the employer (Haar and Brougham, 2013; Haar and Spell, 2004). In turn, good relationships favor fulfillment of the psychological contract (Rousseau, 1989;

Shore and Tetrick, 1994). Although indigenous people share several cultural and contextual characteristics, generalization and “one-size-fits-all” measures should be avoided, as beliefs, values and attitudes vary (Bousquet, 2012; Clugston *et al.*, 2000). Thus, while it is important to implement general measures that will apply to most indigenous contexts, care should be taken to understand and take into account the specificities of each people, community, family and person.

## Methodology

The EBSCO, Scopus, Repère, ProQuest and Google Scholar databases were searched in June 2018 for the expression “perceived insider status.” Verification of the 389 articles retrieved showed that 13 took cultural diversity into account. Additional searches were done for “inclusive leadership,” “inclusive management” and “pro-diversity practices,” allowing to retrieve 29 more articles based on relevance of title and abstract. To be considered relevant, articles had to specifically address leadership or organizational practices or measures to favor the inclusion of minority groups. The search ended when information saturation was reached. As few of the retrieved studies were conducted in Indigenous contexts, an additional search was done combining the keywords “Aboriginal” OR “Indigenous” OR “Native” OR “First Nation\*” AND “employ\*” OR “job” OR “workplace” OR “work\*” OR “staff.” Titles and abstracts were evaluated for relevance based on their mention of success factors or barriers related to the inclusion or integration of indigenous employees into the labor market. The search ended when information saturation was reached, yielding 86 additional articles. A thematic analysis was performed on the retrieved studies to identify best practices in terms of inclusion of indigenous employees and sort them into two main categories depending if integration measures were related to leadership or to organizational functioning. The information within each category was then grouped into coherent measures of which four were related to leadership and nine were organizational.

## Results

### *Integration measures related to leadership*

Inclusive leadership could promote the PIS of employees from minority groups – including indigenous employees – and, consequently, favor fulfillment of the psychological contract. Four integration measures have been identified that are related to leadership: recruiting qualified leaders, understanding cultural particularities, integrating diverse contributions and welcoming questions and challenges (Table I).

*Recruiting qualified leaders.* As a first step, it is essential to select and recruit leaders and supervisors with certain qualities and skills to establish and maintain an inclusive culture in the context of organizational diversity (Nembhard and Edmondson, 2006; Pless and Maak, 2004; Randel *et al.*, 2018). Supervisors should take responsibility for inclusion, and they should understand and communicate how it is an integral part of the mission and vision of the organization (Ely and Thomas, 2001; Ferdman, 2014). The selection and recruitment of qualified leaders was shown to be particularly important to Māori employees in New Zealand, whereas inadequate supervision was shown to be negatively related to perceived organizational support and employee retention (Haar *et al.*, 2016).

Indigenous leaders encourage skill development, autonomy and psychological well-being in the workplace through commitment, consultation, respect and understanding of relationships within the extended family (Love, 2017; Roche *et al.*, 2018). For example, high quality leader-member exchanges (Haar *et al.*, 2018) and group well-being (Love, 2017) are priorities to some Māori leaders, and taking into account the aspirations, needs, wishes and hopes of indigenous employees allows them to feel like family members (Roche *et al.*, 2018). Other values of indigenous leaders are accountability toward employees, integrity, honesty, trust, kindness,

Measures	Applications with indigenous employees	References
Recruiting qualified leaders	Select leaders that promote the development, autonomy and psychological well-being of indigenous workers through commitment, consultation, respect and understanding of cultural particularities	Love (2017) and Roche <i>et al.</i> (2018)
	Select leaders who respect Indigenous values such as integrity, honesty, kindness, hospitality, empathy, collectivism, humility, self-discipline, generosity, authenticity and altruism	Haar <i>et al.</i> (2018) and Ruwhiu and Elkin (2016)
Understanding cultural particularities	Develop sustainable, positive relationships based on trust; show interest for indigenous employees personally rather than limiting interest to their work	Burgess and Dyer (2009), Love (2017) and Thiessen (2016)
	Detect and resolve conflicts; understand indigenous employees' tendency to avoid conflict and adapt to problematic situations rather than to raise issues	Haley and Fisher (2014) and Thiessen (2016)
	Respect indigenous employees' silent, observational, non-verbal behavior and propensity to avoid physical or eye contact	Burgess and Dyer (2009)
	Apply concrete actions and policies aiming at the appropriate use of natural resources given indigenous employees' strong link to the land	Kuntz <i>et al.</i> (2014)
Integrating diverse contributions	Understand the barriers to employment affecting indigenous people and commit to overcome them (e.g. poor living conditions; high crime environment; lack of familiarity with the industrial way of life; discriminatory or inappropriate behaviors; lack of self-confidence, skills or work experience; reticence to renounce to traditional activities; obligations towards the extended family)	Commonwealth of Australia (2005), Dockery and Milsom (2007), Haley and Fisher (2014), Haar <i>et al.</i> (2012), Hunter and Gray (2001), Jose (2013), O'Faircheallaigh (2006) and Purdie <i>et al.</i> (2006)
	Provide cultural training and informal support to non-Indigenous employees, to improve their understanding and sensitivity to Indigenous history, barriers and cultures	Brougham and Haar (2012), Haar and Brougham (2016) and Lai <i>et al.</i> (2018)
	Share power with indigenous employees; apply a collaborative approach based on mutual understanding, respect and reciprocity, compatible with collectivist indigenous cultures	Crawley and Sinclair (2003), Haar <i>et al.</i> (2018), Kuntz <i>et al.</i> (2014), Love (2017), Roche <i>et al.</i> (2018), Ruwhiu and Elkin (2016), Thiessen (2016) and Trompf (1996)
Welcoming questions and challenges	Avoid paternalistic initiatives	Crawley and Sinclair (2003)
	Make constructive comments to foster self-confidence and professional satisfaction of indigenous employees	Dwyer (2003), Haar and Brougham (2016), Jose (2013) and Lai <i>et al.</i> (2018)
Applications of leadership integration measures to promote the perceived insider status (PIS) of indigenous employees	Pay particular attention to indigenous needs and questions as some prefer not to accomplish tasks rather than admitting being unable to fulfill them	Haley and Fisher (2014)
	Support indigenous employees going through personal challenges, beyond the organizational context	Burgess and Dyer (2009) and Day <i>et al.</i> (2004)
	Collaborate with indigenous mentors and elders	Burgess and Dyer (2009), Day <i>et al.</i> (2004), Ewing <i>et al.</i> (2017), Mills and Clarke (2009) and Russell (2013)

**Table I.**  
Applications of leadership integration measures to promote the perceived insider status (PIS) of indigenous employees

hospitality, empathy, clear-sightedness, collectivism, humility, self-discipline, generosity, authenticity and altruism (Haar *et al.*, 2018; Ruwhiu and Elkin, 2016). To ensure fulfillment of the psychological contract, organizational leaders – indigenous or not – should invest efforts in the adoption of behaviors in line with indigenous values. Senior management support of leaders is important (Avery and McKay, 2010; Guillaume *et al.*, 2014; Homan *et al.*, 2007),



---

especially for indigenous supervisors who might feel caught between their culture on one side and company objectives on the other side, as shown in a Māori context (McRae-Williams and Gerritsen, 2010).

*Understanding cultural particularities.* Cultural differences can affect relational preferences and the capacity to fulfill the psychological contract (Brougham and Haar, 2013; Durie, 2003; Fitzsimmons and Stamper, 2014; Pearson and Daff, 2013; Ramamoorthy and Carroll, 1998). Supervisors that actively encourage a personal, humane, transparent, frank and on-going dialog (Ferdman, 2014; Pless and Maak, 2004) can better adjust to different cultural norms and values (Mor Barak, 2000). While indigenous employees are not homogeneous in their beliefs, values and attitudes (Day *et al.*, 2004), studies with indigenous peoples in Australia and Canada have shown that they are often interested in developing relationships that are positive, sustainable and based on trust (Burgess and Dyer, 2009; Love, 2017; Thiessen, 2016). Therefore, the interest given to indigenous employees should not be limited to the work they do, but also to the persons they are (Mosselman, 2016). Sharing personal experiences is a good way for supervisors to establish positive relationships and to encourage authenticity (Ferdinand *et al.*, 2014; Ferdman, 2014; Wasserman *et al.*, 2008). The more the employees are comfortable to express their personality, the more they are creative and the more they identify to their workplace (Nishii and Rich, 2014). Indigenous employees in the USA and Canada often tend to avoid conflict and adapt to problematic situations rather than raise issues (Haley and Fisher, 2014; Thiessen, 2016). Hence, supervisors need to be careful to detect and resolve conflicts (Thiessen, 2016). Indigenous employees sometimes communicate differently, for example in Australia by adopting a silent, observational and non-verbal behavior, and by avoiding physical or eye contact (Burgess and Dyer, 2009). Those particularities must be understood by supervisors (Haar and Brougham, 2011) so as to not be interpreted as timidity, rudeness or hostility (Elsworth, 1986). Given their strong link to the land, indigenous employees expect concrete actions and policies aiming at the appropriate use of resources (Kuntz *et al.*, 2014).

Supervisors have to understand the barriers to employment affecting the indigenous workforce and commit to overcome them in an honest and transparent manner (Jose, 2013). Cultural training and informal support can help better understand and develop a sensitivity to indigenous history and cultures. Furthermore the promotion of indigenous employees to management positions can also help infuse sensitivity to indigenous challenges in the decision-making process (Brougham and Haar, 2012; Haar and Brougham, 2016; Lai *et al.*, 2018).

*Integrating diverse contributions.* Promoting inclusive leadership entails to integrate contributions from a diversified workforce (Nembhard and Edmondson, 2006; Van Knippenberg *et al.*, 2004), by explicitly asking employees what is their vision of organizational development, by listening actively to different viewpoints and by integrating different voices to decision making (Pless and Maak, 2004; Randel *et al.*, 2018; Tang *et al.*, 2017). Such practices are in line with indigenous leadership in Canada, New Zealand and Australia, which is often based on collaboration, mutual understanding, humility, respect, reciprocity, long lasting relationships and helping family and community (Haar *et al.*, 2018; Kuntz *et al.*, 2014; Love, 2017; Ruwhiu and Elkin, 2016; Thiessen, 2016).

Indigenous leaders take care of fellow employees, involve them and listen to them (Kuntz *et al.*, 2014; Love, 2017; Roche *et al.*, 2018). Supervisors should therefore be ready to share a certain level of power, unless organizational initiatives will stay symbolic and paternalistic (Crawley and Sinclair, 2003). Furthermore, autocratic leadership and power imbalance can stress indigenous employees and undermine their health and professional well-being, as was shown in Canada and the Torres Strait Islands (Thiessen, 2016; Trompf, 1996). Appreciating employees for their differences and considering them as equals answer two important

identity preoccupations: belongingness and reputation (De Cremer and Tyler, 2005; Ferdman, 2014; Janssens and Zانوني, 2014; Pless and Maak, 2004; Shore *et al.*, 2011; Tang *et al.*, 2017). Supervisors should support members of minority groups (Ewing *et al.*, 2017; Randel *et al.*, 2018), manifest consideration (Mosselman, 2016) and offer feedback on their work (Mosselman, 2016; Nembhard and Edmondson, 2006). Constructive comments from supervisors were shown to be important in the construction of self-confidence and professional satisfaction of indigenous employees in Australia and Canada (Dwyer, 2003; Haar and Brougham, 2016; Jose, 2013; Lai *et al.*, 2018).

*Welcoming questions and challenges.* Inclusive leaders welcome questions and challenges from employees, they are tolerant, not resentful and do not reprimand employees when mistakes are revealed, hence fostering psychological security, mutual learning and development (Ferdman, 2014; Nembhard and Edmondson, 2006; Nishii, 2013; Tang *et al.*, 2017). Welcoming questions and challenges from indigenous employees is important for the fulfillment of the psychological contract, as much as support, encouragement and empathy, which are among the most contributing factors to positive workplace experience (Thiessen, 2016). Because some indigenous employees in the USA would prefer not to accomplish certain tasks rather than admitting not being able to fulfill them (Haley and Fisher, 2014), supervisors need to pay particular attention to their needs and questions. Offering support to indigenous employees regarding personal challenges beyond the organizational context has also been shown to be important in Australia (Burgess and Dyer, 2009; Day *et al.*, 2004). While supervisors can take on this role, mentorship systems have proven more efficient (Burgess and Dyer, 2009; Day *et al.*, 2004; Ewing *et al.*, 2017). Collaboration with elders also allows to better solve some of the problems met by indigenous employees in Canada (Mills and Clarke, 2009; Russell, 2013).

#### *Organizational measures of integration*

Organizational measures of integration refer to the different policies, practices, programs and initiatives aiming to create an environment of acceptance, support and participation for employees from minority groups (Ferdman, 2014; McKay *et al.*, 2008; Tang *et al.*, 2017). To fulfill the psychological contract, senior management need to install a respectful atmosphere (Mor Barak, 1999; Rynes and Rosen, 1995), which will then lead to the implementation of organizational measures favoring integration: reaching a critical mass of indigenous employees, favoring equity and participation, fostering skill development, assigning meaningful tasks, maintaining good work relationships, facilitating work-life balance, providing employment security, obtaining support from communities and monitoring practices (Table II).

*Reaching a critical mass of indigenous employees.* According to the critical mass theory, a threshold number of participants has to be crossed before a social movement can occur (Oliver *et al.*, 1985). Hence, the proportion of socially and culturally different people in a work group is shaping interaction dynamics within the group (Kanter, 1977a, b). Reaching a critical mass of indigenous employees is thus particularly important, as being surrounded by peers was shown to be a central element of employment well-being in Canada, USA, New Zealand and Australia (Ewing *et al.*, 2017; Haar *et al.*, 2012; Haley and Fisher, 2014; Loxton *et al.*, 2012). Concretely, this allows indigenous employees to refer to people sharing a history and culture and to benefit from mutual support (Haar *et al.*, 2012; Rerden and Guerin, 2015). Having a critical mass of indigenous employees can also generate positive impacts on work relationships, as it encourages interactions with and brings more support from non-indigenous employees (Caron *et al.*, 2019; South *et al.*, 2005; Tang *et al.*, 2017). Being exposed to other cultures can reduce prejudices and negative perceptions and promote equal treatment, therefore reducing discrimination and conflicts within work groups (Andrews and Ashworth, 2015;

Reaching a critical mass of indigenous employees	<p>Have a critical mass of Indigenous employees allows them to refer to fellow colleagues sharing a history and culture and to benefit from mutual support; it favors a feeling of pride for hired friends and family members improving their living conditions</p> <p>Use recruitment means that have proven effective in indigenous contexts: liaison officers, local and social medias, paper forms, selection committees with Indigenous or culturally trained members, situational and behavioral interviews</p>	<p>Caron <i>et al.</i> (2019), Ewing <i>et al.</i> (2017), Haar <i>et al.</i> (2012), Haley and Fisher (2014), Loxton <i>et al.</i> (2012) and Rerden and Guerin (2015)</p> <p>Day <i>et al.</i> (2004), Ewing <i>et al.</i> (2017), Haley and Fisher (2014), Hunter and Gray (2006), Jain <i>et al.</i> (2000), Jose (2013), Maru and Davies (2011), Rerden and Guerin (2015), Russell (2013) and Thiessen (2016)</p>
Promoting equity and participation	<p>Provide indigenous employees with equal wages and equal access to career development opportunities, advantages, compensations, awards and decision making power</p>	<p>Crawley and Sinclair (2003), Ewing <i>et al.</i> (2017), Haley and Fisher (2014), Howlett <i>et al.</i> (2016), Hunter and Hawke (2002), Kunz <i>et al.</i> (2000), Lai <i>et al.</i> (2018), Loxton <i>et al.</i> (2012) and Roche <i>et al.</i> (2018)</p>
Developing skills	<p>Hire indigenous or culturally trained mentors (modeling, counseling, motivational and friendship functions)</p>	<p>Daly and Gebremedhin (2015), Day <i>et al.</i> (2004), Dwyer (2003), Ewing <i>et al.</i> (2017), Haley and Fisher (2014), Jose (2013), Lai <i>et al.</i> (2018), Loxton <i>et al.</i> (2012), Rerden and Guerin (2015) and Russell (2013)</p>
	<p>Develop personalized career pathways to indigenous employees</p> <p>Focus on hands-on rather than theoretical training, to better correspond to indigenous ways of learning</p>	<p>Lai <i>et al.</i> (2018) and Russell (2013)</p> <p>Barnhardt (2005), Haley and Fisher (2014), Jose (2013), Kawagley (2006) and Loxton <i>et al.</i> (2012)</p>
	<p>Collaborate with indigenous communities in the development of training programs</p>	<p>Haley and Fisher (2014), Lai <i>et al.</i> (2018) and Loxton <i>et al.</i> (2012)</p>
Assigning meaningful tasks	<p>Assign functions allowing indigenous employees to contribute to their community's well-being</p> <p>Assign tasks that are respectful of the environment, given indigenous employees' connectedness to the land</p>	<p>Brown and Fraehlich (2012)</p> <p>Haley and Fisher (2014), Kunz <i>et al.</i> (2000), Lawrence (2005), Loxton <i>et al.</i> (2012), McRae-Williams and Gerritsen (2010), Pearson and Daff (2013) and Ruwhiu and Elkin (2016)</p> <p>Biddle <i>et al.</i> (2013) and O'Faircheallaigh (2006)</p>
Maintaining good work relationships	<p>Ban racist behaviors, as indigenous employees would rather not work than be victims of inappropriate behaviors</p> <p>Implement mandatory cultural awareness programs for all employees; develop contents of cultural awareness programs with communities</p>	<p>Brereton and Parmenter (2008), Burgess and Dyer (2009), Chesley (2016), Crawley and Sinclair (2003), Day <i>et al.</i> (2004), Ewing <i>et al.</i> (2017), Ferdinand <i>et al.</i> (2014), Haley and Fisher (2014), Jose (2013), Lai <i>et al.</i> (2018), Lawrence (2005), Mills and Clarke (2009), Parmenter and Trigger (2018), Rerden and Guerin (2015) and Russell (2013)</p>
	<p>Organize activities unrelated to work and focusing on indigenous cultures</p> <p>Involve indigenous mentors or supervisors in dispute settlement</p>	<p>Daly and Gebremedhin (2015), Rerden and Guerin (2015) and Thiessen (2016)</p> <p>Burgess and Dyer (2009) and Rerden and Guerin (2015)</p>

(continued) indigenous employees

**Table II.**  
Applications of  
organizational  
integration measures  
to promote the  
perceived insider  
status (PIS) of

Facilitating work-life balance	Organize family and community events valuing the bonds of indigenous employees with their extended family and larger social network Accommodate indigenous employees in their practice of cultural activities	Daly and Gebremedhin (2015), Haar and Brougham (2011), Haar <i>et al.</i> (2012), Hunter and Hawke (2001), McRae-Williams and Gerritsen (2010) and Thiessen (2016) Brereton and Parmenter (2008), Brougham and Haar (2012), Gibson and Klinck (2005), Haley and Fisher (2014), Haar and Brougham (2013), Harris <i>et al.</i> (2016), Kuntz <i>et al.</i> (2014), Lai <i>et al.</i> (2018), Lam <i>et al.</i> (2002), Lawrence (2005), Love (2017), Loxton <i>et al.</i> (2012), Maru and Davies (2011), McRae-Williams and Gerritsen (2010), Pearson and Daff (2013), Rodon and Lévesque (2015) and Young and McDermott (1988) Brereton and Parmenter (2008) and Russell (2013)
Providing employment security	Establish a cultural center providing information on indigenous cultures and a culturally safe work environment Offer permanent jobs, as short-term contracts can generate stress and ungratefulness in Indigenous employees; respect the preference of some Indigenous employees to work sporadically to more easily pursue traditional activities on the land	Day <i>et al.</i> (2004), Haley and Fisher (2014), Lai <i>et al.</i> (2018), Loxton <i>et al.</i> (2012), McRae-Williams and Gerritsen (2010) and Rerden and Guerin (2015)
Fostering support from community	Encourage family support, promote Indigenous models and success stories  Organize awareness-raising activities regarding the benefits of Indigenous involvement in the labor market	Brereton and Parmenter (2008), Burgess and Dyer (2009), Maru and Davies (2011), McRae-Williams and Gerritsen (2010), Rerden and Guerin (2015) and Rodon and Lévesque (2015) Burgess and Dyer (2009), Haar <i>et al.</i> (2012), Haley and Fisher (2014), Jose (2013), Lawrence (2005), Loxton <i>et al.</i> (2012), Maru and Davies (2011), Parmenter and Trigger (2018), Pearson (2000) and Russell (2013) Haley and Fisher (2014)
Monitoring of practices	Contribute to the economy of indigenous communities by buying local goods and services, donating to non-profit organizations and sponsoring events Develop and implement employment policies and practices in collaboration with indigenous communities, taking into account that cultures are dynamic and that needs evolve	Brougham and Haar (2012), Day <i>et al.</i> (2004), Ewing <i>et al.</i> (2017), Haley and Fisher (2014), Jose (2013), Kuntz <i>et al.</i> (2014) and Rerden and Guerin (2015)

Table II.

Rerden and Guerin, 2015). Indigenous employees in Australia have stated they were proud when friends or family members became work colleagues and had jobs allowing them to improve their living conditions (Ewing *et al.*, 2017). If a critical mass is not reached, the few indigenous employees can feel isolated (Rerden and Guerin, 2015).

One reason that a critical mass of indigenous employees is seldom reached is that this workforce is disadvantaged by conventional recruitment processes requiring submission of a resume and passing job interviews (Ewing *et al.*, 2017; Gray *et al.*, 2012; Pearson and Daff, 2011). Passive recruitment, where positions are advertised in the media or online, is often not successful in indigenous contexts. Considering the importance given to trust and relationships, active recruitment is more efficient, as it involves local organizations, community liaison officers (sometimes called brokers) and benefits from word-of-mouth

within the community, as was shown in Canada, USA, New Zealand and Australia (Day *et al.*, 2004; Ewing *et al.*, 2017; Haley and Fisher, 2014; Hunter and Gray, 2006; Jain *et al.*, 2000; Maru and Davies, 2011; Rerden and Guerin, 2015; Russell, 2013; Thiessen, 2016). Local media, such as community radio stations, are also efficient (Haley and Fisher, 2014; Jain *et al.*, 2000), and so are social media (Molyneaux *et al.*, 2014; Rice *et al.*, 2016). Job interviews should be conducted in the communities, and paper forms should be privileged over online applications (Haley and Fisher, 2014). Having indigenous members, or at least culturally trained members, within selection committees prevents discrimination (Day *et al.*, 2004; Jain *et al.*, 2000; Jose, 2013). Indigenous people in Australia and USA have shown reluctance to bring forward their qualities or individual realizations, as personal credit is secondary to collective accomplishment (Diamond, 2003; Haley and Fisher, 2014; Wares *et al.*, 1992). Thus, promotion systems based on performance should be used with precaution as they are contradictory to collectivist values (Gomez-Mejia and Welbourne, 1991; Ramamoorthy and Carroll, 1998). Interviews should rather be informal, situational and behavioral (Day *et al.*, 2004). Care should however be taken to avoid bias that could occur in the recruitment and the promotion processes (Beattie and Johnson, 2012). Newly hired indigenous employees should quickly be introduced to fellow colleagues, from whom they will obtain support (Burgess and Dyer, 2009; Daly and Gebremedhin, 2015; Day *et al.*, 2004; Lai *et al.*, 2018). Mentorship has also been shown to facilitate integration and adaption of indigenous employees to the workplace in Australia and Canada (Day *et al.*, 2004; Dwyer, 2003; Rerden and Guerin, 2015; Smith, 2005).

Indigenous people often face barriers to career progression which can prevent reaching a critical mass of indigenous people in higher management positions in Australia and Canada (Dwyer, 2003; Ewing *et al.*, 2017; Loxton *et al.*, 2012). Fulfilling the psychological contract thus entails to implement measures to promote the accession of indigenous employees to management positions (Crawley and Sinclair, 2003; Molyneaux *et al.*, 2014; Rerden and Guerin, 2015; Russell, 2013), where they can play a significant role in helping other Indigenous employees (Loxton *et al.*, 2012). However, some indigenous people in Australia and USA are not reaching for management positions because telling others what to do or how to do it would be a source of discomfort (Brereton and Parmenter, 2008; Haley and Fisher, 2014; McRae-Williams and Gerritsen, 2010).

*Promoting equity and participation.* Equity and participation can favor job satisfaction, commitment and trust (Ferdman, 2014; Janssens and Zanoni, 2014; Mor Barak, 2017; Nishii and Rich, 2014; Randel *et al.*, 2018; Shore *et al.*, 2011; Stoermer *et al.*, 2016). Inclusive organizations clearly define the limits of acceptable behavior (Wasserman *et al.*, 2008), and allow employees to be involved in the discussion and to contribute to organization development by sharing their opinions and experiences (Ferdman, 2014; Tang *et al.*, 2017; Van Knippenberg *et al.*, 2004). Indigenous people have long had fewer job opportunities and lower wages than non-indigenous people (Crawley and Sinclair, 2003; Ewing *et al.*, 2017; Howlett *et al.*, 2016; Hunter and Hawke, 2002; Kunz *et al.*, 2000). Companies willing to favor PIS and to fulfill the psychological contract should provide employees with equal access to opportunities, career development opportunities, advantages, compensations, awards, decision-making power and management positions (Haley and Fisher, 2014; Lai *et al.*, 2018; Loxton *et al.*, 2012; Mor Barak, 2000, 2017; Mosselman, 2016; Pelled *et al.*, 1999; Pless and Maak, 2004; Roche *et al.*, 2018; Shore *et al.*, 2011; Stockdale and Crosby, 2004). However, because collectivist cultures tend to favor group harmony over equity (Bond *et al.*, 1982; Hofstede, 1984), these matters should first be discussed with the indigenous employees.

It is important to pay adequate salaries as the feeling of being insufficiently compensated for a stressful or heavy workload has been shown to contribute to high turnover rate of indigenous employees (Cosgrave *et al.*, 2017; Ellemers *et al.*, 2004). Finally, PIS is favored by

participatory decision making (Hill *et al.*, 2001; Kuntz *et al.*, 2014; Roche *et al.*, 2018; Shore *et al.*, 2011) and by capacity to influence organization development (Ding and Shen, 2017; Hui *et al.*, 2015; Loxton *et al.*, 2012; Mor Barak *et al.*, 1998; Pelled *et al.*, 1999; Pless and Maak, 2004; Randel *et al.*, 2018; Whiteside *et al.*, 2006).

*Developing skills.* Continuous skill development through training programs and mentorship can promote internal progression and career development and favor integration of cultural minorities (Chesley, 2016; Cox, 1993; Ferdman, 2014; Mor Barak, 1999; Pless and Maak, 2004), including indigenous people (Day *et al.*, 2004; Dwyer, 2003; Jose, 2013). The fact that an organization invests in employees' skill development sends them a signal that they are important, which contributes to well-being, integration and retention (Lai *et al.*, 2018; Mor Barak, 1999; Trompf, 1996). Mentorship has often been mentioned as a way to favor skill development of Indigenous employees in Australia, USA and Canada (Daly and Gebremedhin, 2015; Day *et al.*, 2004; Dwyer, 2003; Ewing *et al.*, 2017; Haley and Fisher, 2014; Jose, 2013; Lai *et al.*, 2018; Loxton *et al.*, 2012; Rerden and Guerin, 2015). Mentors assume modeling, counseling, motivational and friendship functions that are coherent with indigenous cultures (Burgess and Dyer, 2009; Kram, 1986). Mentors also facilitate communication between indigenous employees and their supervisors (Burgess and Dyer, 2009). It is important that mentors be indigenous or, minimally, that they demonstrate a deep understanding and respect toward indigenous cultures (Burgess and Dyer, 2009; Ewing *et al.*, 2017; Jose, 2013). Being paired to a mentor working on the same shift can also favor attendance (Haley and Fisher, 2014).

While mentorship seems to be a preferred measure for skill development in indigenous contexts, other measures were suggested, for example internal or external training programs to favor career progression in Australia (Brereton and Parmenter, 2008; Ewing *et al.*, 2017; Lai *et al.*, 2018; Loxton *et al.*, 2012). Personalized career pathways combined with support measures are recommended (Lai *et al.*, 2018; Russell, 2013). Development of training programs should involve indigenous people and elders (Haley and Fisher, 2014; Lai *et al.*, 2018; Loxton *et al.*, 2012), and focus on hands-on rather than theoretical learning (Barnhardt, 2005; Haley and Fisher, 2014; Jose, 2013; Kawagley, 2006; Loxton *et al.*, 2012).

*Assigning meaningful tasks.* Delegation to employees of important tasks (Guest *et al.*, 2006; Rose, 2018) and of some decisional power, implying attribution of new responsibilities and authority to exercise them, can promote PIS (Chen and Aryee, 2007), specifically for employees belonging to groups generally occupying inferior positions (Martin and Chernesky, 1989). Indigenous employees need to feel trusted and valued by management, hence favoring autonomy and belongingness (Roche *et al.*, 2018; Thiessen, 2016), and strengthening team cohesion (Man and Lam, 2003). Furthermore, attributing tasks concordant with employees' values can promote motivation and PIS (Chen and Tang, 2018). Following collectivist values, indigenous employees prefer to assume functions allowing them to contribute to community well-being (Brown and Fraehlich, 2012). They also attribute more value to jobs within their communities and that are respectful of the environment, as was shown in Australia, New Zealand and USA (Haley and Fisher, 2014; Kunz *et al.*, 2000; Lawrence, 2005; Loxton *et al.*, 2012; McRae-Williams and Gerritsen, 2010; Pearson and Daff, 2013; Ruwhiu and Elkin, 2016). Working on challenging, stimulating projects, in a collaborative and constructive manner, in relation with colleagues, encourages feelings of dignity and accomplishment (Durie, 2003; Ewing *et al.*, 2017; Roche *et al.*, 2018; Thiessen, 2016) and can contribute to fulfillment of the psychological contract. To the contrary, attribution of repetitive or trivial tasks decreases interest toward work, and increases the risk of resigning (Mills and Clarke, 2009; Pearson and Daff, 2013; Rerden and Guerin, 2015). Task variety is also appreciated by indigenous employees in Australia (Ewing *et al.*, 2017; Loxton *et al.*, 2012; Rerden and Guerin, 2015). However, it is important

---

not to overcharge employees so that they can have free time to engage in innovative behavior (Wang *et al.*, 2017) and to achieve objectives (Guillaume *et al.*, 2014). Indeed, work overload can cause stress, exhaustion and lead to resignation (Lai *et al.*, 2018). The attribution of clear, adequately defined, realistic and attainable objectives favors psychological health and well-being (Lai *et al.*, 2018; Trompf, 1996; Whiteside *et al.*, 2006). Assigning meaningful tasks also aligns with Elkington's (1994) "triple bottom line" framework, which includes environmental, social and economic dimensions of performance to measure organizational impacts on community development (Slaper and Hall, 2011).

*Maintaining good work relationships.* Racism is one of the main obstacles to indigenous people's participation in the workforce (O'Faircheallaigh, 2006). Since some indigenous people would rather not work than be victims of inappropriate behaviors (Biddle *et al.*, 2013), fulfillment of the psychological contract necessitates the establishment of high-quality relationships (Ferdinand *et al.*, 2014). Indeed, high-quality relationships between employees favor PIS in culturally diversified contexts (Chesley, 2016; Mor Barak, 2017; Nishii and Rich, 2014). While employees from individualistic cultures tend to value accomplishment over relationships, collectivist employees consider that quality relationships are more important than professional accomplishment (Hofstede, 1994). For indigenous employees in Australia and Canada, good relationships can favor task accomplishment, performance and retention (Hatcher, 2012; Thiessen, 2016), reduce the risk of emotional tiredness, stress and exhaustion (Lai *et al.*, 2018), increase professional satisfaction (Hartung *et al.*, 2010; Ruwhiu and Elkin, 2016; Thiessen, 2016) and contribute to identity definition (Thiessen, 2016).

Awareness programs about cultural diversity can increase respect, support and appreciation of the values held by employees from minority groups, therefore favoring well-being, satisfaction, commitment and work efficiency and reducing the risks of discriminatory situations (Chesley, 2016; Ferdman, 2014; Mor Barak, 1999, 2000; Rynes and Rosen, 1995). Cultural awareness programs were shown to yield the same positive results in many indigenous contexts in Australia, USA and Canada (Brereton and Parmenter, 2008; Burgess and Dyer, 2009; Day *et al.*, 2004; Ferdinand *et al.*, 2014; Haley and Fisher, 2014; Mills and Clarke, 2009; Rerden and Guerin, 2015; Russell, 2013). However, to really be effective, awareness programs should allow for bidirectional learning where indigenous and non-indigenous employees learn about each other's reality (Crawley and Sinclair, 2003). Paternalistic viewpoints that suppose only indigenous employees need training should be avoided. Indigenous employees in Australia and Canada appreciate cross-cultural training as it helps them learn about the industrial culture (Jose, 2013; Lawrence, 2005) and communicate more efficiently with non-indigenous employees, in a non-conflictual manner (Whiteside *et al.*, 2006). For non-indigenous employees, cross-cultural training can instill understanding of cultural particularities and awareness of the problems encountered by indigenous employees in the workplace, as well as provide the necessary skills to efficiently communicate with indigenous colleagues (Day *et al.*, 2004; Ferdinand *et al.*, 2014). Consciousness of cultural realities can reduce prejudice (Parmenter and Trigger, 2018) and feelings of favoritism (Rerden and Guerin, 2015). Cross-cultural training should thus be offered to all members of the personnel, including mentors and supervisors (Day *et al.*, 2004; Ewing *et al.*, 2017; Haley and Fisher, 2014; Lai *et al.*, 2018). While exposing historical or current injustice incurred by indigenous people is important, awareness programs should avoid taking an accusatory stance that could create more prejudice. Training content and trainer should be chosen in collaboration with indigenous communities (Parmenter and Trigger, 2018).

Integration is also favored by collaboration (Ferdman *et al.*, 2010), especially by having teams made of different cultural groups occupying functions characterized by task interdependency and requiring frequent and substantial communication between group

members (Janssens and Zanoni, 2014). Organizing activities unrelated to work allowed indigenous and non-indigenous employees in Australia and Canada to learn about each other in informal contexts and to develop relationships (Daly and Gebremedhin, 2015; Rerden and Guerin, 2015; Thiessen, 2016).

Mechanisms aiming to settle conflicts in a collaborative, respectful and authentic manner can favor integration (Ferdman, 2014; Ferdman *et al.*, 2010; Hunter and Hawke, 2001, 2002; Loxton *et al.*, 2012; Pless and Maak, 2004). As indigenous employees are generally more comfortable reporting problematic situations to indigenous mentors, their collaboration is important (Burgess and Dyer, 2009; Rerden and Guerin, 2015).

*Facilitating work-life balance.* Measures favoring work-life balance have been underlined as a key factor favoring integration in a culturally diversified context (Pless and Maak, 2004; Ryan and Kossek, 2008). Indigenous employees in Australia sometimes have difficulty finding a balance between their professional and private lives (Lai *et al.*, 2018), particularly in the first 6–12 months following hiring (Dockery and Milsom, 2007). Because of their collectivistic orientation, indigenous people have a different vision of family relationships than employees from majority groups from individualistic cultures. For the latter, emphasis is put on their own needs and those of their immediate family (Haar *et al.*, 2012; Harrington and Liu, 2002), whereas indigenous employees have bonds with their extended family and are part of a large social network providing resources and support in difficult times and contributing to knowledge and identity building (Daly and Gebremedhin, 2015; Haar and Brougham, 2011; Haar *et al.*, 2012; McRae-Williams and Gerritsen, 2010; Thiessen, 2016). Work-life balance warrants particular attention in indigenous contexts, as supervisors often provide more support to employees belonging to their own culture (Foley *et al.*, 2006), and as indigenous employees are often subject to discrimination (Hunter and Hawke, 2001).

Traditional activities, including hunting and fishing, are important to indigenous cultures (Haley and Fisher, 2014; Pearson and Daff, 2013; Young and McDermott, 1988). Reduced presence on the land, combined to increased contacts with non-indigenous people, can undermine identity affirmation (Gibson and Klinck, 2005) and, consequently, reduce professional well-being (Haar and Brougham, 2013; Lam *et al.*, 2002). Indigenous employees in Alaska have mentioned they would rather leave their job than miss community events (Haley and Fisher, 2014). Several authors have mentioned that measures are needed to allow indigenous employees to continue practicing traditional activities, e.g. flexible working modalities (Brereton and Parmenter, 2008; Brougham and Haar, 2012; Haley and Fisher, 2014; Lai *et al.*, 2018; Lawrence, 2005; Love, 2017; Loxton *et al.*, 2012; Maru and Davies, 2011; McRae-Williams and Gerritsen, 2010; Pearson and Daff, 2013; Rodon and Lévesque, 2015). Other organizational measures, such as permission to sing or pray (Harris *et al.*, 2016; Kuntz *et al.*, 2014), establishment of a cultural center, and organization of activities involving community members and employees have also been recommended (Brereton and Parmenter, 2008; Russell, 2013). Employers can resort to an on-call workforce (Haley and Fisher, 2014) to fill-in for indigenous employees on leave due to death in the extended family, especially as reverence due to the dead often implies a longer grieving period in indigenous contexts (Harris *et al.*, 2016; Jose, 2013; Kuntz *et al.*, 2014). Organizations showing understanding and support for cultural customs and needs favor PIS (Brougham and Haar, 2012) and fulfillment of the psychological contract.

*Providing employment security.* Employment security can favor PIS in culturally diversified contexts (Pelled *et al.*, 1999), contributing to professional well-being and retention of indigenous employees (Lai *et al.*, 2018; Loxton *et al.*, 2012; Rerden and Guerin, 2015). However, whereas short-term contracts have been shown to generate stress and ungratefulness in indigenous employees in Australia (Day *et al.*, 2004), some authors have argued that permanent jobs are less preferred by other indigenous employees in



---

Alaska and Australia, who prefer to work sporadically to more easily pursue traditional activities on the land (Haley and Fisher, 2014; McRae-Williams and Gerritsen, 2010).

*Fostering support from community.* Lack of family support is one of the most important barriers to indigenous participation in the labor market (Haar *et al.*, 2012; Juntunen *et al.*, 2001). Indigenous people have few models to follow within their family and community (Burgess and Dyer, 2009; Rerden and Guerin, 2015). Hence, an integration measure specific to indigenous contexts is to raise awareness within communities about how indigenous employees can benefit their families and communities, notably by contributing to positive changes within the industry (Parmenter and Trigger, 2018) and by improving living conditions (Burgess and Dyer, 2009; Lawrence, 2005; Loxton *et al.*, 2012; Pearson, 2000; Russell, 2013). That being said, while sharing is important in indigenous cultures (Macdonald, 2000; McRae-Williams and Gerritsen, 2010), indigenous employees in Canada and Australia sometimes feel pressure to share their revenues with family and community members (Maru and Davies, 2011; McRae-Williams and Gerritsen, 2010; Rodon and Lévesque, 2015). Such pressure can reduce perseverance in the labor market (Brereton and Parmenter, 2008; Maru and Davies, 2011; McRae-Williams and Gerritsen, 2010).

Entertaining relationships with family and community members may allow companies to better understand the barriers to employment facing indigenous people and to obtain suggestions as to how integration measures could be improved (Haar *et al.*, 2012; Jose, 2013). To show reciprocity, companies can contribute to community economy by buying local goods and services, donating to non-profit organizations and sponsoring events (Haley and Fisher, 2014). Long-term company–community relationships are facilitated by community liaison officers (Haley and Fisher, 2014; Maru and Davies, 2011).

*Monitoring of practices.* Monitoring cultural diversity policies and practices in a continuous improvement perspective is a key factor favoring PIS (Ferdman, 2014). Managers should consider indigenous cultures as being dynamic, and consequently implement policies and practices allowing to meet employees' needs in an evolving and case-by-case manner (Brougham and Haar, 2012). Monitoring should be based on clear and measurable objectives (Ewing *et al.*, 2017). Indigenous employees can provide constructive suggestions for improvement of practices (Day *et al.*, 2004; Haley and Fisher, 2014; Jose, 2013; Kuntz *et al.*, 2014; Rerden and Guerin, 2015).

## Conclusion

Indigenous communities can be influential partners in organizations active on their lands and are increasingly considered by companies who wish to adjust to legal reforms, counter labor scarcity or favor social acceptability of their projects. To ensure fulfillment of the psychological contract with indigenous employees, employers should deploy measures favoring PIS. Being positively related to well-being and professional satisfaction, PIS promotes performance, adoption of organizational citizenship behaviors, and employee retention. The leadership and organizational measures found to meet the perceived mutual obligations between employers and indigenous employees are characterized by non-economic agreements focused on maintaining a long-term relationship, and are thus closer to the relational than to the transactional end of the psychological contract continuum (Rousseau, 1990, 1995).

This review identified integration measures involving supervisors (leader-member exchanges and inclusive leadership) and organizations (perceived organizational support and pro-diversity practices). Four integration measures are linked to leadership: recruiting qualified leaders, understanding cultural particularities, integrating diverse contributions and welcoming questions and challenges. The nine organizational measures of integration are: reaching a critical mass of indigenous employees, favoring equity and participation, fostering

skill development, assigning meaningful tasks, maintaining good work relationships, facilitating work-life balance, providing employment security, fostering support from communities and monitoring practices. Although most of these leadership and organizational measures are relevant for other groups of employees, this study addressed how they should be implemented in indigenous contexts, considering specificities related to culture, values, needs and barriers to overcome. Moreover, fostering support from the community was found to be an integration measure specific to collectivist indigenous cultures.

It is important to recall that variation in the quality of leader-member exchanges from one employee to another can generate conflict (Boies and Howell, 2006; Hooper and Martin, 2008; Stewart and Johnson, 2009), affect employment satisfaction, commitment, well-being and, in turn, performance (Hooper and Martin, 2008; Schyns, 2006). However, it is appropriate for leaders to treat employees differently, as long as the basis of differential treatment is clearly established (Chen *et al.*, 2018), and if supervisors foster a personal, humane, transparent, frank and on-going dialog with employees (Ferdman, 2014; Pless and Maak, 2004), notably to adjust to different cultural norms and values within the work group (Mor Barak, 2000). Along these lines, multicultural or diversity committees facilitate the effective implementation of pro-diversity practices, while favoring a positive work climate for indigenous and non-indigenous employees (Caron *et al.*, 2019; Purnell *et al.*, 2011). Additional research is needed to further inquire into the measures favoring PIS of indigenous employees and fulfillment of the psychological contract. Future research on integration of indigenous employees could consider societal, work group and individual factors (Guillaume *et al.*, 2014; Tang *et al.*, 2017). As indigenous people are not a monolithic group (Day *et al.*, 2004), it would be interesting to determine to what extent employees' attitudes are influenced not only by culture, but also by personal, demographic and situational factors (Clugston *et al.*, 2000). Although both indigenous-owned and non-indigenous-owned organizations were considered in this review, the influence of ownership on PIS of indigenous workers needs to be explored more in depth. Furthermore, while this review focused on the organizational measures that can be implemented to fulfill the employer's side of the psychological contract, further studies could focus on the employees' side of the contract. Finally, while the individualistic/collectivist aspect of culture has received more attention from researchers (Brewer and Chen, 2007; Triandis, 2001), other cultural dimensions (Hofstede, 2003; Stoermer *et al.*, 2016) could influence integration and would thus deserve to be explored. Concretely, Hofstede's (2003) and Hofstede *et al.*'s (2010) conceptualization of culture is comprised of five other cultural dimensions: power distance, uncertainty, masculinity-femininity, long-term/short-term orientation and indulgence. As it is the case with collectivism, an inclusive working climate can also be fostered by low short power distance, low uncertainty, gender equality, long-term orientation and high indulgence (Stoermer *et al.*, 2016) It would thus be interesting to further study how indigenous cultures stand on these complementary dimensions (see Haar *et al.*, 2018).

## Note

1. Indigenous communities, peoples and nations are those which, having a historical continuity with pre-invasion and pre-colonial societies that developed on their territories, consider themselves distinct from other sectors of the societies now prevailing on those territories, or parts of them. They form at present non-dominant sectors of society and are determined to preserve, develop and transmit to future generations their ancestral territories, and their ethnic identity, as the basis of their continued existence as peoples, in accordance with their own cultural patterns, social institutions and legal system. [...] On an individual basis, an indigenous person is one who belongs to these indigenous populations through self-identification as indigenous (group consciousness) and is recognized and accepted by these populations as one of its members (acceptance by the group). This preserves for these communities the sovereign right and power to decide who belongs to them, without external interference (United Nations, 2009).

---

## References

- Anderson, R.B., Dana, L.P. and Dana, T.E. (2006), "Indigenous land rights, entrepreneurship, and economic development in Canada: 'Opting-in' to the global economy", *Journal of World Business*, Vol. 41 No. 1, pp. 45-55.
- Andrews, R. and Ashworth, R. (2015), "Representation and inclusion in public organizations: evidence from the UK civil service", *Public Administration Review*, Vol. 75 No. 2, pp. 279-288.
- Avery, D.R. and McKay, P.F. (2010), "Doing diversity right: an empirically based approach to effective diversity management", in Hodgkinson, G.P. and Ford, J.K. (Eds), *International Review of Industrial and Organizational Psychology*, Vol. 25, John Wiley & Sons, Hoboken, NJ, pp. 227-252.
- Babcock-Roberson, M. and Strickland, O. (2010), "The relationship between charismatic leadership, work engagement, and organizational citizenship behaviors", *The Journal of Psychology Interdisciplinary and Applied*, Vol. 144 No. 3, pp. 313-326.
- Barnhardt, R. (2005), "Indigenous knowledge systems and Alaska native ways of knowing", *Anthropology and Education Quarterly*, Vol. 36 No. 1, pp. 8-23.
- Beattie, G. and Johnson, P. (2012), "Possible unconscious bias in recruitment and promotion and the need to promote equality", *Perspectives: Policy and Practice in Higher Education*, Vol. 16 No. 1, pp. 7-13.
- Biddle, N., Taylor, J. and Yap, M. (2009), "Are the gaps closing?: Regional trends and forecasts of Indigenous employment", *Australian Journal of Labour Economics*, Vol. 12 No. 3, pp. 263-280.
- Biddle, N., Howlett, M., Hunter, B. and Paradies, Y. (2013), "Labour market and other discrimination facing indigenous Australians", *Australian Journal of Labour Economics*, Vol. 16 No. 1, pp. 91-113.
- Boies, K. and Howell, J.M. (2006), "Leader-member exchange in teams: an examination of the interaction between relationship differentiation and mean LMX in explaining team-level outcomes", *The Leadership Quarterly*, Vol. 17 No. 3, pp. 246-257.
- Bond, M.H., Leung, K. and Wan, K.C. (1982), "How does cultural collectivism operate? The impact of task and maintenance contributions on reward distribution", *Journal of Cross-Cultural Psychology*, Vol. 13 No. 2, pp. 186-200.
- Bousquet, M.-P. (2012), "De la pensée holistique à l'Indian time: dix stéréotypes à éviter sur les Amérindiens", *Nouvelles pratiques sociales*, Vol. 24 No. 2, pp. 204-226.
- Brereton, D. and Parmenter, J. (2008), "Indigenous employment in the Australian mining industry", *Journal of Energy & Natural Resources Law*, Vol. 26 No. 1, pp. 66-90.
- Brewer, M.B. and Chen, Y.-R. (2007), "Where (who) are collectives in collectivism? Toward conceptual clarification of individualism and collectivism", *Psychological Review*, Vol. 114 No. 1, pp. 133-151.
- Brougham, D. and Haar, J. (2012), "Perceptions of cultural inclusion: a study of the work-family interface for Maori employees within New Zealand", *Labour, Employment and Work in New Zealand*, pp. 1-11.
- Brougham, D. and Haar, J. (2013), "Collectivism, cultural identity and employee mental health: a study of New Zealand Māori", *Social Indicators Research*, Vol. 114 No. 3, pp. 1143-1160.
- Brown, J. and Fraehlich, C. (2012), "Assets for employment in aboriginal community-based human services agencies", *Adult Education Quarterly*, Vol. 62 No. 3, pp. 287-303.
- Burgess, J. and Dyer, S. (2009), "Workplace mentoring for Indigenous Australians: a case study", *Equal Opportunities International*, Vol. 28 No. 6, pp. 465-485.
- Caron, J., Asselin, H. and Beaudoin, J.M. (2019), "Attitudes and behaviors of mining sector employers towards the Indigenous workforce", *Resources Policy*, Vol. 61, pp. 108-117.
- Chen, C. and Tang, N. (2018), "Does perceived inclusion matter in the workplace?", *Journal of Managerial Psychology*, Vol. 33 No. 1, pp. 43-57.
- Chen, X.P., He, W. and Weng, L.C. (2018), "What is wrong with treating followers differently? The basis of leader-member exchange differentiation matters", *Journal of Management*, Vol. 44 No. 3, pp. 946-971.

- Chen, Z.X. and Aryee, S. (2007), "Delegation and employee work outcomes: an examination of the cultural context of mediating processes in China", *Academy of Management Journal*, Vol. 50 No. 1, pp. 226-238.
- Chen, Z.X., Tsui, A.S. and Zhong, L. (2008), "Reactions to psychological contract breach: a dual perspective", *Journal of Organizational Behavior*, Vol. 29 No. 5, pp. 527-548.
- Chesley, J.M. (2016), "Skilled immigrants in the workplace: perceptions of inclusion in a Canadian energy company", doctoral dissertation, University of the Pacific, Stockton, CA.
- Chompookum, D. and Brooklyn Derr, C. (2004), "The effects of internal career orientations on organizational citizenship behavior in Thailand", *Career Development International*, Vol. 9 No. 4, pp. 406-423.
- Clugston, M., Howell, J.P. and Dorfman, P.W. (2000), "Does cultural socialization predict multiple bases and foci of commitment?", *Journal of Management*, Vol. 26 No. 1, pp. 5-30.
- Commonwealth of Australia (2005), "Overcoming Indigenous disadvantage key indicators 2005 report", Steering Committee for the Review of Government Service Provision, Canberra.
- Cosgrave, C., Maple, M. and Hussain, R. (2017), "Factors affecting job satisfaction of Aboriginal mental health workers working in community mental health in rural and remote New South Wales", *Australian Health Review*, Vol. 41 No. 6, pp. 707-711.
- Cox, T. (1993), *Cultural Diversity in Organizations: Theory, Research and Practice*, Berrett-Koehler Publishers, San Francisco, CA.
- Coyle-Shapiro, J. and Kessler, I. (2000), "Consequences of the psychological contract for the employment relationship: a large scale survey", *Journal of Management Studies*, Vol. 37 No. 7, pp. 903-930.
- Coyle-Shapiro, J. and Parzefall, M.R. (2005), "Explorer la théorie du contrat psychologique: questions clés pour comprendre et investiguer la relation d'emploi", in Delobbe, N., Herrbach, O., Lacaze, D. and Mignonac, K. (Eds), *Comportement organisationnel, Contrat psychologique, émotions au travail, socialisation organisationnelle*, Vol. 1, Editions De Boeck, Brussels, pp. 21-67.
- Crawley, A. and Sinclair, A. (2003), "Indigenous human resource practices in Australian mining companies: towards an ethical model", *Journal of Business Ethics*, Vol. 45 No. 4, pp. 361-373.
- Daly, A. and Gebremedhin, T.A. (2015), "Can an 'indigenous employment program' work? A case study of National Australia Bank", *Journal of Applied Economics and Policy*, Vol. 34 No. 3, pp. 128-138.
- Dana, L.-P. and Anderson, R. (2011), "Indigenous entrepreneurship as a function of cultural perceptions of opportunity", in Dana, L.-P. (Ed.), *World Encyclopedia of Entrepreneurship*, Edward Elgar Publishing, Cheltenham, pp. 249-258.
- Daschuk, J.W. (2013), *Clearing the Plains. Disease, Politics of Starvation and the Loss of Aboriginal Life*, University of Saskatchewan Press, Saskatoon.
- Day, A., Giles, G., Marshall, B. and Sanderson, V. (2004), "The recruitment and retention of indigenous criminal justice agency staff in an Australian state", *International Journal of Offender Therapy and Comparative Criminology*, Vol. 48 No. 3, pp. 347-359.
- De Cremer, D. and Tyler, T.R. (2005), "A matter of intragroup status: the importance of respect for the viability of groups", in Mannix, B., Neal, M. and Thoman-Hunt, M. (Eds), *Research on Managing Groups and Teams*, Vol. 7, Emerald, Bingley, pp. 1-21.
- Diamond, P. (2003), *A Fire in Your Belly: Maori Leaders Speak*, Huia, Thorndon.
- Ding, C.G. and Shen, C.K. (2017), "Perceived organizational support, participation in decision making, and perceived insider status for contract workers: a case study", *Management Decision*, Vol. 55 No. 2, pp. 413-426.
- Dockery, A.M. and Milsom, N. (2007), "A review of Indigenous employment programs. A national vocational education and training research and evaluation program report", National Centre for Vocational Education Research, Adelaide.
- Downey, S.N., Werff, L., Thomas, K.M. and Plaut, V.C. (2015), "The role of diversity practices and inclusion in promoting trust and employee engagement", *Journal of Applied Social Psychology*, Vol. 45 No. 1, pp. 35-44.

- 
- Durie, M. (2003), *Nga kahui pou: Launching Maori futures*, Huia, Wellington.
- Dwyer, R.J. (2003), "Career progression factors of aboriginal executives in the Canada federal public service", *Journal of Management Development*, Vol. 22 No. 10, pp. 881-889.
- Eisenberger, R., Cummings, J., Armeli, S. and Lynch, P. (1997), "Perceived organizational support, discretionary treatment, and job satisfaction", *Journal of Applied Psychology*, Vol. 82 No. 5, pp. 812-820.
- Eisenberger, R., Huntington, R., Hutchison, S. and Sowa, D. (1986), "Perceived organizational support", *Journal of Applied Psychology*, Vol. 71 No. 3, pp. 500-507.
- Elkington, J. (1994), "Towards the sustainable corporation: win-win-win business strategies for sustainable development", *California Management Review*, Vol. 36 No. 2, pp. 90-100.
- Ellemers, N., De Gilder, D. and Haslam, S.A. (2004), "Motivating individuals and groups at work: a social identity perspective on leadership and group performance", *Academy of Management Review*, Vol. 29 No. 3, pp. 459-478.
- Elsworth, R.K. (1986), "Aboriginal employment issues in the public sector: the application of critical incident methodology to the analysis of workplace problems of Aboriginal employees in the public sector", doctoral dissertation, University of Queensland, Brisbane.
- Ely, R.J. and Thomas, D.A. (2001), "Cultural diversity at work: the effects of diversity perspectives on work group processes and outcomes", *Administrative Science Quarterly*, Vol. 46 No. 2, pp. 229-273.
- Ewing, B., Sarra, G., Price, R., O'Brien, G. and Priddle, C. (2017), "Access to sustainable employment and productive training: workplace participation strategies for indigenous employees", *Australian Aboriginal Studies*, Vol. 2017 No. 2, pp. 27-42.
- Farrell, D. (1983), "Exit, voice, loyalty, and neglect as responses to job dissatisfaction: a multidimensional scaling study", *Academy of Management Journal*, Vol. 26 No. 4, pp. 596-607.
- Ferdinand, A.S., Paradies, Y., Perry, R. and Kelaher, M. (2014), "Aboriginal health promotion through addressing employment discrimination", *Australian Journal of Primary Health*, Vol. 20 No. 4, pp. 384-388.
- Ferdman, B.M. (2014), "The practice of inclusion in diverse organizations", in Ferdman, B.M. and Deane, B.R. (Eds), *Diversity at Work: The Practice of Inclusion*, John Wiley and Sons, Hoboken, NJ, pp. 3-54.
- Ferdman, B.M., Avigdor, A., Braun, D., Konkin, J. and Kuzmycz, D. (2010), "Collective experience of inclusion, diversity, and performance in work groups", *Revista de Administração Mackenzie*, Vol. 11 No. 3, pp. 6-26.
- Findler, L., Wind, L.H. and Mor Barak, M.E. (2007), "The challenge of workforce management in a global society: modeling the relationship between diversity, inclusion, organizational culture, and employee well-being, job satisfaction and organizational commitment", *Administration in Social Work*, Vol. 31 No. 3, pp. 63-94.
- Fitzsimmons, S.R. and Stamper, C.L. (2014), "How societal culture influences friction in the employee-organization relationship", *Human Resource Management Review*, Vol. 24 No. 1, pp. 80-94.
- Foley, S., Linnehan, F., Greenhaus, J.H. and Weer, C.H. (2006), "The impact of gender similarity, racial similarity, and work culture on family-supportive supervision", *Group & Organization Management*, Vol. 31 No. 4, pp. 420-441.
- Gee, G.C. (2008), "A multilevel analysis of the relationship between institutional and individual racial discrimination and health", *American Journal of Public Health*, Vol. 98 No. 1, pp. S48-S56.
- Gelfand, M.J., Erez, M. and Aycan, Z. (2007), "Cross-cultural organizational behavior", *Annual Review of Psychology*, Vol. 58, pp. 479-514.
- Gibson, G. and Klinck, J. (2005), "Canada's resilient north: the impact of mining on aboriginal communities", *Pimatisiwin*, Vol. 3 No. 1, pp. 116-139.
- Goldman, B.M., Gutek, B.A., Stein, J.H. and Lewis, K. (2006), "Employment discrimination in organizations", *Journal of Management*, Vol. 32 No. 6, pp. 786-830.

- Gomez-Mejia, L.R. and Welbourne, T. (1991), "Compensation strategies in a global context", *People and Strategy*, Vol. 14 No. 1, pp. 29-41.
- Graen, G., Dansereau, F. Jr and Minami, T. (1972), "Dysfunctional leadership styles", *Organizational Behavior and Human Performance*, Vol. 7 No. 2, pp. 216-236.
- Graen, G.B. and Uhl-Bien, M. (1995), "Relationship-based approach to leadership: development of leader-member exchange (LMX) theory of leadership over 25 years", *The Leadership Quarterly*, Vol. 6 No. 2, pp. 219-247.
- Gray, M., Hunter, B. and Lohar, S. (2012), "Increasing indigenous employment rates", Issues Paper No. 3 produced for the Closing the Gap Clearinghouse, Australian Institute of Family Studies, Melbourne.
- Groysberg, B. and Connolly, K. (2013), "Great leaders who make the mix work", *Harvard Business Review*, Vol. 91 No. 9, pp. 68-76.
- Gurrero, S., Sylvestre, J. and Muresanu, D. (2013), "Pro-diversity practices and perceived insider status", *Cross Cultural Management*, Vol. 20 No. 1, pp. 5-19.
- Guest, D.E., Oakley, P., Clinton, M. and Budjanovcanin, A. (2006), "Free or precarious? A comparison of the attitudes of workers in flexible and traditional employment contracts", *Human Resource Management Review*, Vol. 16 No. 2, pp. 107-124.
- Guillaume, Y.R.F., Dawson, J.F., Priola, V., Sacramento, C.A., Woods, S.A., Higson, H.E., Budhwar, P.S. and West, M.A. (2014), "Managing diversity in organizations: an integrative model and agenda for future research", *European Journal of Work and Organizational Psychology*, Vol. 23 No. 5, pp. 783-802.
- Gullestrup, H. (2006), *Cultural Analysis – Towards Cross-Cultural Understanding*, Aalborg University Press, Aalborg.
- Haar, J.M. and Brougham, D. (2011), "Consequences of cultural satisfaction at work: a study of New Zealand Māori", *Asia Pacific Journal of Human Resources*, Vol. 49 No. 4, pp. 461-475.
- Haar, J.M. and Brougham, D. (2013), "An indigenous model of career satisfaction: exploring the role of workplace cultural wellbeing", *Social Indicators Research*, Vol. 110 No. 3, pp. 873-890.
- Haar, J.M. and Brougham, D. (2016), "Organisational-based self-esteem: a within country comparison of outcomes between Māori and New Zealand Europeans", *Journal of Management & Organization*, Vol. 22 No. 5, pp. 720-735.
- Haar, J.M. and Delaney, B. (2009), "Entrepreneurship and Maori cultural values: using "whanaungatanga" to understanding Maori business", *New Zealand Journal of Applied Business Research*, Vol. 7 No. 1, pp. 25-40.
- Haar, J.M. and Spell, C.S. (2004), "Programme knowledge and value of work-family practices and organizational commitment", *International Journal of Human Resource Development and Management*, Vol. 15 No. 6, pp. 1040-1055.
- Haar, J.M. and Staniland, N. (2016), "The influence of psychological resilience on the career satisfaction of Māori employees: exploring the moderating effects of collectivism", *New Zealand Journal of Human Resource Management*, Vol. 16 No. 1, pp. 58-72.
- Haar, J.M., de Fluiter, A. and Brougham, D. (2016), "Abusive supervision and turnover intentions: the mediating role of perceived organisational support", *Journal of Management & Organization*, Vol. 22 No. 2, pp. 139-153.
- Haar, J.M., Roche, A.M. and Brougham, D. (2018), "Indigenous insights into ethical leadership: a study of Māori leaders", *Journal of Business Ethics*, pp. 1-20.
- Haar, J.M., Roche, A.M. and Taylor, D. (2012), "Work-family conflict and turnover intentions of Indigenous employees: the importance of the whanau/family for Maori", *International Journal of Human Resource Management*, Vol. 23 No. 12, pp. 2546-2560.
- Haley, S. and Fisher, D. (2014), "Indigenous employment, training and retention: successes and challenges at Red Dog Mine", in Gilberthorpe, E. and Hilson, G. (Eds), *Natural Resource Extraction and Indigenous Livelihoods. Development Challenges in An Era of Globalization*, Routledge, New York, NY, pp. 1973-2000.

- Harrington, L. and Liu, J.H. (2002), "Self-enhancement and attitudes toward high achievers: a bicultural view of the independent and interdependent self", *Journal of Cross-Cultural Psychology*, Vol. 33 No. 1, pp. 37-55.
- Harris, F., Macfarlane, S., Macfarlane, A. and Jolly, M. (2016), "Māori values in the workplace: investing in diversity", *New Zealand Journal of Indigenous Scholarship*, Vol. 5 No. 1, pp. 48-62.
- Hartung, P.J., Fouad, N.A., Leong, F.T. and Hardin, E.E. (2010), "Individualism-collectivism: links to occupational plans and work values", *Journal of Career Assessment*, Vol. 18 No. 1, pp. 34-45.
- Hatcher, A. (2012), "Building cultural bridges with aboriginal learners and their 'classmates' for transformative environmental education", *Journal of Environmental Studies*, Vol. 2 No. 4, pp. 346-356.
- Herring, C. (2009), "Does diversity pay?: Race, gender, and the business case for diversity", *American Sociological Review*, Vol. 74 No. 2, pp. 208-224.
- Hill, P.S., Wakerman, J., Matthews, S. and Gibson, O. (2001), "Tactics at the interface: Australian aboriginal and Torres Strait Islander health managers", *Social Science & Medicine*, Vol. 52 No. 3, pp. 467-480.
- Hobart, C.W. (1981), "Performance of native trainees in an apprenticeship training program", *The Canadian Journal of Native Studies*, Vol. 1 No. 1, pp. 33-58.
- Hofstede, G. (1984), *Culture's Consequences: International Differences in Work-Related Values*, Vol. 5, Sage publications, New York, NY.
- Hofstede, G. (1994), "The business of international business is culture", *International Business Review*, Vol. 3 No. 1, pp. 1-14.
- Hofstede, G. (2003), *Culture's Consequences: Comparing Values, Behaviors, Institutions and Organizations Across Nations*, Sage publications, New York, NY.
- Hofstede, G., Hofstede, G.J. and Minkov, M. (2010), *Cultures and Organizations: Software of the Mind*, 3rd ed., McGraw Hill, New York, NY.
- Homan, A.C., Van Knippenberg, D., Van Kleef, G.A. and De Dreu, C.K. (2007), "Bridging faultlines by valuing diversity: diversity beliefs, information elaboration, and performance in diverse work groups", *Journal of Applied Psychology*, Vol. 92 No. 5, pp. 1189-1199.
- Hooper, D.T. and Martin, R. (2008), "Beyond personal leader-member exchange (LMX) quality: the effects of perceived LMX variability on employee reactions", *The Leadership Quarterly*, Vol. 19 No. 1, pp. 20-30.
- Hornig, J.-S., Tsai, C.-Y., Hu, D.-C. and Liu, C.-H. (2016), "The role of perceived insider status in employee creativity: developing and testing a mediation and three-way interaction model", *Asia Pacific Journal of Tourism Research*, Vol. 21 No. S1, pp. S53-S75.
- Howlett, M., Gray, M. and Hunter, B. (2016), "Wages, government payments and other income of indigenous and non-indigenous Australians", *Australian Journal of Labour Economics*, Vol. 19 No. 2, pp. 53-76.
- Hui, C., Lee, C. and Rousseau, D. (2004), "Psychological contract and organizational citizenship behavior in China: investigating generalizability and instrumentality", *Journal of Applied Psychology*, Vol. 89 No. 2, pp. 311-321.
- Hui, C., Lee, C. and Wang, H. (2015), "Organizational inducements and employee citizenship behavior: the mediating role of perceived insider status and the moderating role of collectivism", *Human Resource Management*, Vol. 54 No. 3, pp. 439-456.
- Hunter, B.H. and Gray, M.C. (2001), "Indigenous labour force status re-visited: factors associated with the discouraged worker phenomenon", *Australian Journal of Labour Economics*, Vol. 4 No. 2, pp. 111-133.
- Hunter, B.H. and Gray, M.C. (2006), "The effectiveness of indigenous job search strategies", *Economic Record*, Vol. 82 No. 256, pp. 1-10.
- Hunter, B.H. and Hawke, A.E. (2001), "A comparative analysis of the industrial relations experiences of indigenous and other Australian workers", *Journal of Industrial Relations*, Vol. 43 No. 1, pp. 44-65.

- Hunter, B.H. and Hawke, A.E. (2002), "Industrial relations in workplace employing indigenous Australians", *Australian Journal of Labour Economics*, Vol. 5 No. 3, pp. 373-395.
- Jain, H.C., Singh, P. and Agocs, C. (2000), "Recruitment, selection and promotion of visible-minority and aboriginal police officers in selected Canadian police services", *Canadian Public Administration*, Vol. 43 No. 1, pp. 46-74.
- Janssens, M. and Zanoni, P. (2014), "Alternative diversity management: organizational practices fostering ethnic equality at work", *Scandinavian Journal of Management*, Vol. 30 No. 3, pp. 317-331.
- Jensen, J.M., Opland, R.A. and Ryan, A.M. (2010), "Psychological contracts and counterproductive work behaviors: employee responses to transactional and relational breach", *Journal of Business and Psychology*, Vol. 25 No. 4, pp. 555-568.
- Johnson, C. and Basile, S. (2006), *Stratégie de développement durable des Premières Nations du Québec et du Labrador*, Institut de développement durable des Premières Nations du Québec et du Labrador (IDDPNQL), Wendake.
- Jose, J.S. (2013), "Aboriginal employment in the Alberta oil sands: success and barriers to success", master's thesis, University of Calgary, Calgary.
- Juntunen, C.L., Barraclough, D.J., Broneck, C.L., Seibel, G.A., Winrow, S.A. and Morin, P.M. (2001), "American Indian perspectives on the career journey", *Journal of Counseling Psychology*, Vol. 48 No. 3, pp. 274-285.
- Kalb, G., Le, T., Hunter, B. and Leung, F. (2014), "Identifying important factors for closing the gap in labour force status between indigenous and non-indigenous Australians", *Economic Record*, Vol. 90 No. 291, pp. 536-550.
- Kanter, R.M. (1977a), "Some effects of proportions on group life", *American Journal of Sociology*, Vol. 82 No. 5, pp. 965-990.
- Kanter, R.M. (1977b), *Men and Women of the Corporation*, Basic Books, New York, NY.
- Katrinli, A., Atabay, G., Gunay, G. and Cangarli, B.G. (2011), "The moderating role of leader-member exchange in the relationship between psychological contract violation and organizational citizenship behavior", *African Journal of Business Management*, Vol. 5 No. 1, pp. 1-6.
- Kawagley, A.O. (2006), *A Yupiaq Worldview: A Pathway to Ecology And Spirit*, Waveland Press, Long Grove, IL.
- Kickul, J., Lester, S. and Belgio, E. (2004), "Attitudinal and behavioral outcomes of psychological contract breach: a cross cultural comparison of the United States and Hong Kong Chinese", *International Journal of Cross Cultural Management*, Vol. 4, pp. 229-249.
- Kim, T.-Y., Hon, A.H.Y. and Crant, J.M. (2010), "Proactive personality, employee creativity, and newcomer outcomes: a longitudinal study", *Journal of Business and Psychology*, Vol. 24 No. 1, pp. 93-103.
- Kotter, J.P. (1973), "The psychological contract: managing the joining-up process", *California Management Review*, Vol. 15 No. 3, pp. 91-99.
- Kram, K.E. (1986), "Mentoring in the workplace", in Hall, D.T. (Ed.), *Career Development in Organizations*, Jossey-Bass, San Francisco, CA, pp. 170-201.
- Kuntz, J., Näswall, K., Beckingsale, A. and Macfarlane, A.H. (2014), "Capitalising on diversity: espousal of Maori values in the workplace", *Journal of Corporate Citizenship*, Vol. 55, pp. 102-122.
- Kunz, J., Milan, A. and Schetagne, S. (2000), *Unequal Access: A Canadian Profile of Racial Differences in Education, Employment and Income*, Canadian Race Relations Foundation, Toronto.
- Lai, G.C., Taylor, E.V., Haigh, M.M. and Thompson, S.C. (2018), "Factors affecting the retention of Indigenous Australians in the health workforce: a systematic review", *International Journal of Environmental Research and Public Health*, Vol. 15 No. 5, pp. 1-22.
- Lam, S.S., Schaubroeck, J. and Aryee, S. (2002), "Relationship between organizational justice and employee work outcomes: a cross-national study", *Journal of Organizational Behavior*, Vol. 23 No. 1, pp. 1-18.
- Lawrence, R. (2005), "Governing Warlpiri subjects: indigenous employment and training programs in the Central Australian mining industry", *Geographical Research*, Vol. 43 No. 1, pp. 40-48.



- Lee, H.E., Park, H.S., Lee, T.S. and Lee, D.W. (2007), "Relationships between LMX and subordinates' feedback-seeking behaviors", *Social Behavior and Personality*, Vol. 35 No. 5, pp. 659-674.
- Liden, R.C., Bauer, T.N. and Erdogan, B. (2004), "The role of leader-member exchange in the dynamic relationship between employer and employee: implications for employee socialization, leaders, and organizations", in Coyle-Shapiro, J.A.-M., Shore, L.M., Taylor, S. and Tetrick, L.E. (Eds), *The Employment Relationship: Examining Psychological and Contextual Perspectives*, Oxford University Press, Oxford, pp. 226-250.
- Liden, R.C., Sparrowe, R.T. and Wayne, S.J. (1997), "Leader-member exchange theory: the past and potential for the future", *Research in Personnel and Human Resources Management*, Vol. 15, pp. 47-120.
- Love, T.R. (2017), "Māori values, care and compassion in organisations: a research strategy", Research report, University of Canterbury, Christchurch.
- Loxton, E., Schirmer, J. and Kanowski, P. (2012), "Employment of indigenous australians in the forestry sector: a case study from northern queensland", *Australian Forestry*, Vol. 75 No. 2, pp. 73-81.
- Lucas, T. and Knights, P. (2014), "A maturity scale for indigenous employment in the Australian minerals industry", *Mining Education Australia*, Vol. 3 No. 1, pp. 33-38.
- McCreary, T., Mills, S. and St-Amand, A. (2016), "Lands and resources for jobs: how Aboriginal peoples strategically use environmental assessments to advance community employment aims", *Canadian Public Policy*, Vol. 42 No. 2, pp. 212-223.
- McIntosh, A.J., Zygadlo, F.K. and Matunga, H. (2004), "Rethinking Maori tourism", *Asia Pacific Journal of Tourism Research*, Vol. 9 No. 4, pp. 331-352.
- McKay, P.F., Avery, D.R. and Morris, M.A. (2008), "Mean racial-ethnic differences in employee sales performance: the moderating role of diversity climate", *Personnel Psychology*, Vol. 61 No. 2, pp. 349-374.
- McKay, P.F., Avery, D.R., Tonidandel, S., Morris, M.A., Hernandez, M. and Hebl, M.R. (2007), "Racial differences in employee retention: are diversity climate perceptions the key?", *Personnel Psychology*, Vol. 60 No. 1, pp. 35-62.
- McRae-Williams, E. and Gerritsen, R. (2010), "Mutual incomprehension: the cross cultural domain of work in a remote australian aboriginal community", *International Indigenous Policy Journal*, Vol. 1 No. 2, pp. 1-27.
- Macdonald, G. (2000), "Economies and personhood: demand sharing among the Wiradjuri of New South Wales", *Senri Ethnological Studies*, Vol. 53, pp. 87-111.
- Macneil, I.R. (1985), "Relational contract: what we do and do not know", *Wisconsin Law Review*, pp. 483-526.
- Man, D.C. and Lam, S.S. (2003), "The effects of job complexity and autonomy on cohesiveness in collectivistic and individualistic work groups: a cross-cultural analysis", *Journal of Organizational Behavior*, Vol. 24 No. 8, pp. 979-1001.
- Martin, P.Y. and Chernesky, R.H. (1989), "Women's prospects for leadership in social welfare: a political economy perspective", *Administration in Social Work*, Vol. 13 Nos 3-4, pp. 117-143.
- Maru, Y.T. and Davies, J. (2011), "Supporting cross-cultural brokers is essential for employment among aboriginal people in remote Australia", *Rangeland Journal*, Vol. 33 No. 4, pp. 327-338.
- Masterson, S.S. and Stamper, C.L. (2003), "Perceived organizational membership: an aggregate framework representing the employee-organization relationship", *Journal of Organizational Behavior*, Vol. 24 No. 5, pp. 473-490.
- Milloy, J.S. (2008), "Indian act colonialism: a century of dishonour", research paper for the National Centre for First Nations Governance, Ottawa.
- Mills, S. and Clarke, L. (2009), "'We will go side-by-side with you.' Labour union engagement with Aboriginal peoples in Canada", *Geoforum*, Vol. 40 No. 6, pp. 991-1001.
- Molyneaux, H., O'Donnell, S., Kakekaspan, C., Walmark, B., Budka, P. and Gibson, K. (2014), "Social media in remote first nation communities", *Canadian Journal of Communication*, Vol. 39 No. 2, pp. 275-288.

- Mor Barak, M.E. (1999), "Beyond affirmative action: toward a model of diversity and organizational inclusion", *Administration in Social Work*, Vol. 23 No. 3, pp. 47-68.
- Mor Barak, M.E. (2000), "The inclusive workplace: an ecosystems approach to diversity management", *Social Work*, Vol. 45 No. 4, pp. 339-353.
- Mor Barak, M.E. (2017), *Managing Diversity: Toward A Globally Inclusive Workplace*, Sage Publications, Thousand Oaks, CA.
- Mor Barak, M.E. and Levin, A. (2002), "Outside of the corporate mainstream and excluded from the work community: a study of diversity, job satisfaction and well-being", *Community, Work & Family*, Vol. 5 No. 2, pp. 133-157.
- Mor Barak, M.E., Cherin, D. and Berkman, S. (1998), "Organizational and personal dimensions in diversity climate: ethnic and gender differences in employee perceptions", *Journal of Applied Behavioral Science*, Vol. 34 No. 1, pp. 82-104.
- Mor Barak, M.E., Findler, L. and Wind, L.H. (2001), "Diversity, inclusion, and commitment in organizations: international empirical explorations", *Journal of Behavioral and Applied Management*, Vol. 2 No. 2, pp. 71-96.
- Mosselman, I. (2016), "The complicated concept of inclusion; how the perception of inclusion of ethnic minority employees is influenced by the behavior of the supervisor", master's thesis, Radboud University, Nijmegen.
- Mujtaba, B. and Afza, T. (2011), "Business ethics perceptions of public and private sector respondents in Pakistan", *Far East Journal of Psychology and Business*, Vol. 3 No. 1, pp. 1-11.
- Nembhard, I.M. and Edmondson, A.C. (2006), "Making it safe: the effects of leader inclusiveness and professional status on psychological safety and improvement efforts in health care teams", *Journal of Organizational Behavior*, Vol. 27 No. 7, pp. 941-966.
- Nishii, L.H. (2013), "The benefits of climate for inclusion for gender-diverse groups", *Academy of Management Journal*, Vol. 56 No. 6, pp. 1754-1774.
- Nishii, L.H. and Mayer, D.M. (2009), "Do inclusive leaders help to reduce turnover in diverse groups? The moderating role of leader-member exchange in the diversity to turnover relationship", *Journal of Applied Psychology*, Vol. 94 No. 6, pp. 1412-1426.
- Nishii, L.H. and Rich, R.E. (2014), "Creating inclusive climates in diverse organizations", in Ferdman, B.M. and Deane, B.R. (Eds), *Diversity at Work: The Practice of Inclusion*, Jossey-Bass, San Francisco, CA, pp. 330-363.
- O'Faircheallaigh, C. (2006), "Mining agreements and aboriginal economic development in Australia and Canada", *Journal of Aboriginal Economic Development*, Vol. 5 No. 1, pp. 74-91.
- O'Faircheallaigh, C. (2013), "Community development agreements in the mining industry: an emerging global phenomenon", *Community Development*, Vol. 44 No. 2, pp. 222-238.
- Oliver, P., Marwell, G. and Teixeira, R. (1985), "A theory of the critical mass: interdependence, group heterogeneity, and the production of collective action", *American Journal of Sociology*, Vol. 91 No. 3, pp. 522-556.
- Organ, D.W. (1997), "Organizational citizenship behavior: it's construct clean-up time", *Human Performance*, Vol. 10 No. 2, pp. 85-97.
- Oswick, C. and Noon, M. (2014), "Discourses of diversity, equality and inclusion: trenchant formulations or transient fashions?", *British Journal of Management*, Vol. 25 No. 1, pp. 23-39.
- Owen, J.R. (2016), "Social license and the fear of mineras interruptus", *Geoforum*, Vol. 77, pp. 102-105.
- Parkins, J.R., Stedman, R.C., Patriquin, M.N. and Burns, M. (2006), "Strong policies, poor outcomes: longitudinal analysis of forest sector contributions to Aboriginal communities in Canada", *Journal of Aboriginal Economic development*, Vol. 5 No. 1, pp. 61-73.
- Parmenter, J. and Trigger, D. (2018), "Aboriginal cultural awareness training for mine employees: good intentions, complicated outcomes", *Extractive Industries and Society*, Vol. 5 No. 2, pp. 363-370.

- 
- Pearce, J.L. and Randel, A.E. (2004), "Expectations of organizational mobility, workplace social inclusion, and employee job performance", *Journal of Organizational Behavior*, Vol. 25 No. 1, pp. 81-98.
- Pearson, C.A. and Daff, S. (2011), "Extending boundaries of human resource concepts and practices: an innovative recruitment method for indigenous Australians in remote regions", *Asia Pacific Journal of Human Resources*, Vol. 49 No. 3, pp. 325-343.
- Pearson, C.A. and Daff, S. (2013), "Indigenous workforce participation at a mining operation in Northern Australia", *Australian Bulletin of Labour*, Vol. 39 No. 1, pp. 42-63.
- Pearson, N. (2000), "Passive welfare and the destruction of Indigenous society in Australia", in Saunders, P. (Ed.), *Reforming the Australian Welfare State*, Australian Institute of Family Studies, Melbourne, pp. 136-155.
- Pelled, H.L., Ledford, G.E. Jr and Albers Mohrman, S. (1999), "Demographic dissimilarity and workplace inclusion", *Journal of Management Studies*, Vol. 36 No. 7, pp. 1013-1031.
- Peredo, A.M., Anderson, R.B., Galbraith, C., Honig, B. and Dana, L.P. (2004), "Towards a theory of Indigenous entrepreneurship", *International Journal of Entrepreneurship and Small Business*, Vol. 1 Nos 1/2, pp. 1-20.
- Pillai, R. and Meindl, J.R. (1998), "Context and charisma: a 'meso' level examination of the relationship of organic structure, collectivism, and crisis to charismatic leadership", *Journal of Management*, Vol. 24 No. 5, pp. 643-671.
- Pless, N. and Maak, T. (2004), "Building an inclusive diversity culture: principles, processes and practice", *Journal of Business Ethics*, Vol. 54 No. 2, pp. 129-147.
- Prno, J. and Slocombe, D.S. (2012), "Exploring the origins of 'social license to operate' in the mining sector: perspectives from governance and sustainability theories", *Resources Policy*, Vol. 37 No. 3, pp. 346-357.
- Purdie, N., Frigo, T., Stone, A. and Dick, W. (2006), *Enhancing Employment Opportunities for Indigenous Victorians. A Review of the Literature*, Victorian State Services Authority, Melbourne.
- Purnell, L., Davidhizar, R.E., Giger, J.N., Strickland, O.L., Fishman, D. and Allison, D.M. (2011), "A guide to developing a culturally competent organization", *Journal of Transcultural Nursing*, Vol. 22 No. 1, pp. 7-14.
- Ramamoorthy, N. and Carroll, S.J. (1998), "Individualism/collectivism orientations and reactions toward alternative human resource management practices", *Human Relations*, Vol. 51 No. 5, pp. 571-588.
- Randel, A.E., Galvin, B.M., Shore, L.M., Ehrhart, K.H., Chung, B.G., Dean, M.A. and Kedharnath, U. (2018), "Inclusive leadership: Realizing positive outcomes through belongingness and being valued for uniqueness", *Human Resource Management Review*, Vol. 28 No. 2, pp. 190-203.
- Redpath, L. and Nielsen, M.O. (1997), "A comparison of native culture, non-native culture and new management ideology", *Canadian Journal of Administrative Sciences*, Vol. 14 No. 3, pp. 327-339.
- Rerden, W. and Guerin, B. (2015), "The employment of aboriginal and Torres Strait Islanders in local government: issues, benefits, and ways forward", *Australian Journal of Psychology*, Vol. 8 No. 2, pp. 1-16.
- Rhoades, L. and Eisenberger, R. (2002), "Perceived organizational support: a review of the literature", *Journal of Applied Psychology*, Vol. 87 No. 4, pp. 698-714.
- Rice, E.S., Haynes, E., Royce, P. and Thompson, S.C. (2016), "Social media and digital technology use among Indigenous young people in Australia: a literature review", *International Journal for Equity in Health*, Vol. 15 No. 1, pp. 81-97.
- Robinson, S.L. (1996), "Trust and breach of the psychological contract", *Administrative Science Quarterly*, Vol. 41 No. 4, pp. 574-599.
- Robinson, S.L. and Morrison, E.W. (1995), "Psychological contracts and OCB: the effect of unfulfilled obligations on civic virtue behavior", *Journal of Organizational Behavior*, Vol. 16 No. 3, pp. 289-298.

- Robinson, S.L. and Rousseau, D. (1994), "Violating the psychological contract: not the exception but the norm", *Journal of Organizational Behavior*, Vol. 15 No. 3, pp. 245-259.
- Roche, A.M., Haar, J.M. and Brougham, D. (2018), "Māori leaders' well-being: a self-determination perspective", *Leadership*, Vol. 14 No. 1, pp. 25-39.
- Rodon, T. and Lévesque, F. (2015), "Understanding the social and economic impacts of mining development in Inuit communities: experiences with past and present mines in Inuit Nunangat", *The Northern Review*, Vol. 41, pp. 13-39.
- Rose, P.S. (2018), "The intern to employee career transition: an outsiders perception of insider status", *Journal of Career Development*, Vol. 45 No. 6, pp. 566-579.
- Rousseau, D. (1989), "Psychological and implied contracts in organizations", *Employee Responsibilities and Rights Journal*, Vol. 2 No. 2, pp. 121-139.
- Rousseau, D. (1995), *Psychological Contract in Organizations*, Sage Publications, Thousand Oaks, CA.
- Rousseau, D. and Schalk, R. (2000), *Psychological Contracts in Employment: Cross-National Perspectives*, Sage Publications., Thousand Oaks, CA.
- Rousseau, D.M. (1990), "New hire perceptions of their own and their employer's obligations: a study of psychological contracts", *Journal of Organizational Behavior*, Vol. 11 No. 5, pp. 389-400.
- Russell, J. (2013), "Aboriginal inclusion in Yukon's mining industry: training for employment", master's thesis, University of Manitoba, Winnipeg.
- Ruwhiu, D. and Elkin, G. (2016), "Converging pathways of contemporary leadership: in the footsteps of Māori and servant leadership", *Leadership*, Vol. 12 No. 3, pp. 308-323.
- Ryan, A.M. and Kossek, E.E. (2008), "Work-life policy implementation: breaking down or creating barriers to inclusiveness?", *Human Resource Management*, Vol. 47 No. 2, pp. 295-310.
- Rynes, S. and Rosen, B. (1995), "A field survey of factors affecting the adoption and perceived success of diversity training", *Personnel Psychology*, Vol. 48 No. 2, pp. 247-270.
- Sammartino, A., O'Flynn, J. and Nicholas, S. (2003), "The employer perspective of Indigenous (un) employment", *Economic Papers*, Vol. 22 No. 4, pp. 45-60.
- Schyns, B. (2006), "Are group consensus in leader-member exchange and shared work values related to organizational outcomes?", *Small Group Research*, Vol. 37 No. 1, pp. 20-35.
- Schyns, B. and Day, D. (2010), "Critique and review of leader-member exchange theory: issues of agreement, consensus, and excellence", *European Journal of Work and Organizational Psychology*, Vol. 19 No. 1, pp. 1-29.
- Shore, L.M. and Tetrick, L.E. (1994), "The psychological contract as an explanatory framework in the employment relationship", in Cooper, C.L. and Rousseau, D.M. (Eds), *Trends in Organizational Behavior*, Vol. 1, John Wiley & Sons, Hoboken, NJ, pp. 91-109.
- Shore, L.M., Randel, A.E., Chung, B.G., Dean, M.A., Ehrhart, K.H. and Singh, G. (2011), "Inclusion and diversity in work groups: a review and model for future research", *Journal of Management*, Vol. 37 No. 4, pp. 1262-1289.
- Shore, L.M., Chung-Herrera, B.G., Dean, M.A., Ehrhart, K.H., Jung, D.I., Randel, A.E. and Singh, G. (2009), "Diversity in organizations: where are we now and where are we going?", *Human Resource Management Review*, Vol. 19 No. 2, pp. 117-133.
- Slaper, T.F. and Hall, T.J. (2011), "The triple bottom line: what is it and how does it work", *Indiana Business Review*, Vol. 86 No. 1, pp. 4-8.
- Smith, L. (2005), "On tricky ground: researching the native in an age of uncertainty", in Denzin, N.K. and Lincoln, Y.S. (Eds), *The Sage Handbook of Qualitative Research*, Sage publications, Thousand Oaks, CA, pp. 85-108.
- South, S., Bonjean, C., Markham, W. and Corder, J. (2005), "Female labor force participation and the organizational experiences of male workers", *Sociological Quarterly*, Vol. 24 No. 3, pp. 367-380.

- 
- Stamper, C.L. and Masterson, S.S. (2002), "Insider or outsider? how employee perceptions of insider status affect their work behavior", *Journal of Organizational Behavior*, Vol. 23 No. 8, pp. 875-894.
- Stewart, M.M. and Johnson, O.E. (2009), "LMX as a moderator of the relationship between work group diversity and team performance", *Group & Organization Management*, Vol. 34 No. 5, pp. 507-535.
- Stewart, R., Volpone, S.D., Avery, D.R. and McKay, P. (2011), "You support diversity, but are you ethical? Examining the interactive effects of diversity and ethical climate perceptions on turnover intentions", *Journal of Business Ethics*, Vol. 100 No. 4, pp. 581-593.
- Stockdale, M.S. and Crosby, F.J. (2004), *The Psychology and Management of Workplace Diversity*, Blackwell Publishing, Hoboken, NJ.
- Stoermer, S., Bader, A.K. and Froese, F.J. (2016), "Culture matters: the influence of national culture on inclusion climate", *Cross Cultural & Strategic Management*, Vol. 23 No. 2, pp. 287-305.
- Tang, N., Zheng, X. and Chen, C. (2017), "Managing Chinese diverse workforce: toward a theory of organizational inclusion", *Nankai Business Review International*, Vol. 8 No. 1, pp. 39-56.
- Thiessen, S. (2016), "First Nations cultural approaches to work in Canada: a multiple case study", doctoral dissertation, Northcentral University, San Diego, CA.
- Thomson, I. and Boutilier, R.G. (2011), "The social licence to operate", in Darling, P. (Ed.), *SME Mining Engineering Handbook*, Society for Mining, Metallurgy, and Exploration, Englewood, CO, pp. 673-690.
- Triana, M. del C., Garcia, M.F. and Colella, A. (2010), "Managing diversity: how organizational efforts to support diversity moderate the effects of perceived racial discrimination on affective commitment", *Personnel Psychology*, Vol. 63 No. 4, pp. 817-843.
- Triandis, H.C. (2001), "Individualism-collectivism and personality", *Journal of Personality*, Vol. 69 No. 8, pp. 907-924.
- Trigger, B.G., Washburn, W.E., Adams, R.E., Salomon, F., MacLeod, M.J. and Schwartz, S.B. (1996), *The Cambridge History of the Native Peoples of the Americas*, Cambridge University Press, Cambridge.
- Trigger, D. (2002), "Large-scale mining in aboriginal Australia: cultural dispositions & economic aspirations in Indigenous communities", *International Codes, Technology and Sustainability for the Minerals Industry: CMMI Congress 2002*, The Australasian Institute of Mining and Metallurgy, Cairns, Carlton South, May 27-28, pp. 189-194.
- Trompf, P. (1996), "The health and safety experience of Aboriginal and Torres Strait Islander workers", in Robinson, G. (Ed.), *Aboriginal Health: Social and Cultural Transitions Conference*, Northern Territory University Press, Northern Territory University, Darwin, pp. 1-9.
- Turnley, W.H. and Feldman, D.C. (1999), "The impact of psychological contract violations on exit, voice, loyalty, and neglect", *Human Relations*, Vol. 52 No. 7, pp. 895-922.
- United Nations (2009), *State of the World's Indigenous Peoples*, United Nations, Department of Economic and Social Affairs, New York, NY.
- Van Dyne, L. and LePine, J.A. (1998), "Helping and voice extra-role behaviors: evidence of construct and predictive validity", *Academy of Management Journal*, Vol. 41 No. 1, pp. 108-119.
- Van Knippenberg, D., De Dreu, C.K. and Homan, A.C. (2004), "Work group diversity and group performance: an integrative model and research agenda", *Journal of Applied Psychology*, Vol. 89 No. 6, pp. 1008-1022.
- Van Knippenberg, D., Haslam, S.A. and Platow, M.J. (2007), "Unity through diversity: value-in-diversity beliefs, work group diversity, and group identification", *Group Dynamics Theory Research and Practice*, Vol. 11 No. 3, pp. 207-222.
- Walker, R. (1989), "Māori identity", in Novitz, D., Willmott, W.E. and Willmott, B. (Eds), *Culture and Identity: In New Zealand*, Government Printer, Wellington, pp. 35-52.

- Wang, H., Feng, J., Prevelie, P. and Wu, K. (2017), "Why do I contribute when I am an 'insider'? A moderated mediation approach to perceived insider status and employee's innovative behavior", *Journal of Organizational Change Management*, Vol. 30 No. 7, pp. 1184-1197.
- Wang, L., Chu, X. and Ni, J. (2010), "LMX and organizational citizenship behavior: a new perspective from perceived insider status and Chinese traditionality", *Frontiers of Business Research in China*, Vol. 4 No. 1, pp. 148-169.
- Wares, D.M., Dobrec, A., Rosenthal, J.A. and Wedel, K.R. (1992), "Job satisfaction, practice skills, and supervisory skills of administrators of Indian child welfare programs", *Child Welfare*, Vol. 71 No. 5, pp. 405-418.
- Wasserman, I.C., Gallegos, P.V. and Ferdman, B.M. (2008), "Dancing with resistance: leadership challenges in fostering a culture of inclusion", in Thomas, K.M. (Ed.), *Diversity Resistance in Organizations*, Taylor & Francis Inc., Philadelphia, PA, pp. 175-200.
- Wayne, S.J., Shore, L.M. and Liden, R.C. (1997), "Perceived organizational support and leader-member exchange: a social exchange perspective", *Academy of Management Journal*, Vol. 40 No. 1, pp. 82-111.
- Wayne, S.J., Shore, L.M., Bommer, W.H. and Tetrick, L.E. (2002), "The role of fair treatment and rewards in perceptions of organizational support and LMX", *Journal of Applied Psychology*, Vol. 87 No. 3, pp. 590-598.
- Whiteside, M., Tsey, K., McCalman, J., Cadet-James, Y. and Wilson, A. (2006), "Empowerment as a framework for indigenous workforce development and organisational change", *Australian Social Work*, Vol. 59 No. 4, pp. 422-434.
- Young, R.A. and McDermott, P. (1988), "Employment training programs and acculturation of native peoples in Canada's Northwest Territories", *Arctic*, Vol. 41 No. 3, pp. 195-202.
- Zaccaro, S.J., Rittman, A.L. and Marks, M.A. (2001), "Team leadership", *The Leadership Quarterly*, Vol. 12 No. 4, pp. 451-483.

**Corresponding author**

Joanie Caron can be contacted at: [joanie.caron3@uqat.ca](mailto:joanie.caron3@uqat.ca)