



# Theory of superconductor-ferromagnet point-contact spectra: The case of strong spin polarization

Roland Grein,<sup>1</sup> Tomas Löfwander,<sup>2</sup> Georgo Metalidis,<sup>1</sup> and Matthias Eschrig<sup>1,3</sup><sup>1</sup>*Institut für Theoretische Festkörperphysik and DFG-Center for Functional Nanostructures, Karlsruhe Institute of Technology, D-76128 Karlsruhe, Germany*<sup>2</sup>*Department of Microtechnology and Nanoscience MC2, Chalmers University of Technology, S-412 96 Göteborg, Sweden*<sup>3</sup>*Fachbereich Physik, Universität Konstanz, D-78457 Konstanz, Germany*

(Received 30 November 2009; revised manuscript received 4 February 2010; published 9 March 2010; publisher error corrected 11 March 2010)

We study the impact of spin-active scattering on Andreev spectra of point contacts between superconductors (SC) and strongly spin-polarized ferromagnets (FM) using recently derived boundary conditions for the quasiclassical theory of superconductivity. We describe the interface region by a microscopic model for the interface scattering matrix. Our model includes both spin filtering and spin mixing and is nonperturbative in both transmission and spin polarization. We emphasize the importance of spin-mixing caused by interface scattering, which has been shown to be crucial for the creation of exotic pairing correlations in such structures. We provide estimates for the magnitude of this effect in different scenarios and discuss its dependence on various physical parameters. Our main finding is that the shape of the interface potential has a tremendous impact on the magnitude of the spin-mixing effect. Thus, all previous calculations, being based on delta-function or box-shaped interface potentials, underestimate this effect gravely. As a consequence, we find that with realistic interface potentials the spin-mixing effect can easily be large enough to cause spin-polarized subgap Andreev bound states in SC/FM point contacts. In addition, we show that our theory generalizes earlier models based on the Blonder-Tinkham-Klapwijk approach.

DOI: [10.1103/PhysRevB.81.094508](https://doi.org/10.1103/PhysRevB.81.094508)

PACS number(s): 72.25.Mk, 74.45.+c, 73.63.-b, 85.25.-j

## I. INTRODUCTION

The proximity effect near interfaces between superconductors and ferromagnetic materials has been a field of intense research in recent years.<sup>1–16</sup> This interest is mainly triggered by the observation that exotic types of pairing symmetries that are difficult (or impossible) to be observed in bulk materials can be created in such heterostructures.<sup>3,17,18</sup> Examples are the recent revival of pairing states that exhibit a sign change under the exchange of the time coordinates of the particles that constitute a Cooper pair (odd-frequency pairing),<sup>1</sup> or mechanisms for the creation of long-range equal-spin pairing components in half-metallic ferromagnets.<sup>19–22</sup> Supercurrents in half metals have subsequently been observed,<sup>23</sup> which ignited a strong activity in further theoretical modeling of this effect.<sup>4–7,13–17,24–28</sup> Spin-triplet pairing has proven to be at the heart of new physical phenomena, such as  $0-\pi$  transitions in Josephson junctions with FM interlayers<sup>2,8,12,29–31</sup> or the interplay between magnons and triplet pairs.<sup>28,32</sup>

So far, transport calculations in superconductor/ferromagnet (SC/FM) hybrids have mostly been concentrated on either fully polarized FMs, so-called half metals (HM), or on the opposite limit of weakly polarized systems. However, most FMs have an intermediate exchange splitting of the energy bands on the order of 0.2–0.8 times the Fermi energy  $E_F$ , which we here refer to as strongly spin-polarized ferromagnets (sFM). As an alternative to solving full Bogoliubov-de Gennes equations,<sup>15,26,33–35</sup> we have recently presented a quasiclassical (QC) theory appropriate for this intermediate range of spin polarizations, which is of considerable importance for applications.<sup>11</sup>

For such strongly spin-polarized materials, it has been argued that Andreev point contact spectra can be used to

obtain the spin polarization of the FM,<sup>36–39</sup> which is an important information for spintronics applications. Experimental studies of point contact spectra with strongly spin-polarized systems have been performed for a number of systems.<sup>40–49</sup> However, Xia *et al.*<sup>50</sup> have objected rightfully, that without taking into account a realistic description of the interface region, the results obtained with this method are questionable.

In the quasiclassical approach to superconducting hybrid structures, interfacial scattering is taken into account by the interface scattering matrix  $S$  of the structure in its normal state. This is ideal for discussing microscopic models of interfacial scattering which go well beyond the standard Blonder-Tinkham-Klapwijk (BTK) approach.<sup>51</sup> The latter has been employed to fit experimental data of SC/FM point contact spectra<sup>36</sup> with the interface being described by a single parameter  $Z$  related to its transparency and the ferromagnet by its spin-polarization  $P$ . The modification of the Andreev point contact spectrum compared to a normal-metal contact is then uniquely related to the spin-dependent density of states (DOS) in the FM bulk. This model allows for good fits to experimental data. However, comparing different probes with varying interface transparency, a systematic dependence  $P(Z)$  was found by Woods *et al.*<sup>44</sup> This shows that the extracted spin polarization is not a bulk property, as was originally assumed, but at least partially an interface property. This important difference has been emphasized also in Ref. 45.

From the theoretical point of view, it is obvious that if scattering is spin-active, i.e., the scattering event is sensitive to the spin of the incident electron, this may not only imply a spin-dependent transmission probability (spin filtering) (for a review, see Ref. 52) but also a spin-dependent phase shift

of the wave function.<sup>53</sup> The latter is called the *spin-mixing effect* and it has been shown to be of crucial importance for the creation of exotic pairing correlations.<sup>3,19,53–57</sup> So far, estimates of the magnitude of this effect and its dependence on physical parameters including not only the structure of the interface but also the Fermi-surface geometry of the adjacent materials and the FM exchange splitting are still lacking. Instead, phenomenological models have been adopted that introduce a free parameter to account for it.<sup>3,19,54,58</sup>

The main point of this paper is to provide a microscopic analysis of the characteristic interface parameters. In the following we adopt a model of the interface region consisting of a spin-dependent scattering potential whose quantization axis may be misaligned with that of the adjacent FM. We allow for an arbitrary shape of this scattering potential and illustrate that this may enhance the spin-mixing effect considerably compared to the previously used box-shaped or delta-function potentials. We also study in detail the relation between spin-mixing angle and impact angle of the quasiparticle, showing that this relation is nontrivial for transparent interfaces. Furthermore, we provide a very general mathematical discussion of suitable parameterizations and representations of the scattering matrix in this context.

Andreev bound states have proven invaluable for studying the internal structure of the superconducting order parameter.<sup>59,60</sup> Andreev states are also induced at spin-polarized interfaces by the spin-mixing effect.<sup>54</sup> In fact, the measurement of such bound states at spin-active interfaces would be an elegant method to determine the spin-mixing angle of the interface. To date this quantity has never been determined in experiment. Our results show, that a measurable effect is more likely to appear when leakage of spin polarization into the superconductor takes place, for example, due to diffusion of magnetic atoms. Our theory can discriminate between conventional Andreev-reflection (AR) processes and spin-flip Andreev reflection (SAR), the latter being responsible for the long-range triplet proximity effect. We discuss the Andreev bound state associated to the spin-mixing effect and show that it may be observable in experiment. Furthermore we show that for highly polarized FMs, spin-flip scattering can influence the spectra considerably, proving that such processes must be precluded if one wishes to extract the FM spin polarization from such spectra.

The paper is organized as follows. In Sec. II, we discuss the quasiclassical theory to describe transport through a point contact. In Sec. III we turn to interface models and discuss the spin-mixing effect and the scattering matrix. In Sec. IV we present results for Andreev conductance spectra of SC/FM point contacts. We discuss analytical results, focusing on the Andreev bound-state spectrum, as well as numerical results. In Sec. IV C we establish the connection to earlier transport theories for such systems which are based on the BTK approach. We prove analytically that they are contained as limiting cases in our formalism. Eventually, in Sec. V, we conclude on our results.

## II. QUASICLASSICAL THEORY

We make use of the quasiclassical theory of superconductivity<sup>61–68</sup> to calculate electronic transport across

the SC/FM interface. This method is based on the observation that, in most situations, the superconducting state varies on the length scale of the superconducting coherence length  $\xi_0 = \hbar |\bar{v}_F| / 2\pi k_B T_c$ , with the normal-state Fermi velocity  $\bar{v}_F$ . The appropriate many-body Green's function for describing the superconducting state has been introduced by Gor'kov,<sup>69</sup> and the Gor'kov Green's function can then be decomposed in a fast oscillating component, varying on the scale of the Fermi wavelength  $2\pi/k_F$ , and an envelope function varying on the scale of  $\xi_0$ . The quasiclassical approximation consists of integrating out the fast oscillating component,

$$\check{g}(\vec{p}_F, \vec{R}, \varepsilon, t) = \frac{1}{a(\vec{p}_F)} \int d\xi_p \hat{\tau}_3 \check{G}(\vec{p}, \vec{R}, \varepsilon, t), \quad (1)$$

where  $a(\vec{p}_F)$  is the inverse quasiparticle renormalization factor (due to self-energy effects from high-energy processes),<sup>63</sup> a “check” denotes a matrix in Keldysh-Nambu-Gor'kov space,<sup>70</sup> a “hat” denotes a matrix in Nambu-Gor'kov particle-hole space (with  $\hat{\tau}_3$  the third Pauli matrix),  $\vec{p}_F$  is the Fermi momentum,  $\vec{R}$  the spatial coordinate,  $\varepsilon$  the quasiparticle energy,  $t$  the time, and  $\xi_p = \bar{v}_F \cdot (\vec{p} - \vec{p}_F)$ . The quasiclassical Green's function obeys the transport equation<sup>61,62</sup>

$$i\hbar \bar{v}_F \cdot \nabla_{\vec{R}} \check{g} + [\varepsilon \hat{\tau}_3 - \check{\Delta} - \check{h}, \check{g}]_{\otimes} = \check{0}. \quad (2)$$

Here,  $\check{\Delta}$  is the superconducting order parameter,  $\check{h}$  contains external fields and self-energies due to impurities, etc., and  $[\bullet, \bullet]_{\otimes}$  denotes the commutator with respect to a time-convolution product (for details see Ref. 63). Equation (2) must be supplemented by a normalization condition<sup>61,71</sup>  $\check{g} \otimes \check{g} = -\check{1} \pi^2$ . The current density is related to the Keldysh component of the Green's function via

$$\vec{j}(\vec{R}, t) = e N_F \int \frac{d\varepsilon}{8\pi i} \text{Tr}(\bar{v}_F(\vec{p}_F) \hat{\tau}_3 \check{g}^K(\vec{p}_F, \vec{R}, \varepsilon, t)), \quad (3)$$

where  $N_F$  is the density of states at the Fermi level in the normal state and  $\langle \bullet \rangle$  denotes a Fermi-surface average which is defined as follows:

$$\langle \bullet \rangle = \frac{1}{N_F} \int_{\text{FS}} \frac{d^2 p_F}{(2\pi\hbar)^3 |\bar{v}_F(\vec{p}_F)|} (\bullet), \quad (4)$$

$$N_F = \int_{\text{FS}} \frac{d^2 p_F}{(2\pi\hbar)^3 |\bar{v}_F(\vec{p}_F)|}. \quad (5)$$

The direct inclusion of an exchange energy  $J_{\text{FM}}$  on order of  $0.1E_F$  or larger in the quasiclassical scheme violates the underlying assumptions of quasiclassical theory. As we aim to describe a strongly spin-polarized FM, which means that its exchange field  $J_{\text{FM}}$  will be on the order of the Fermi energy, we cannot include it as a source term  $-\frac{1}{2} \vec{J}_{\text{FM}} \cdot \vec{\sigma}$  (with  $\vec{\sigma}$  the vector of Pauli spin matrices) in the quasiclassical equation of motion. Such an approach would neglect terms on order of  $J_{\text{FM}}^2/E_F$  compared to  $\Delta$ . The resulting condition  $J_{\text{FM}} \ll \sqrt{E_F \Delta}$ , assuming, e.g., a gap of 1 meV and  $E_F \sim 1$  eV, would imply  $J_{\text{FM}} \ll 30$  meV. In general, the condition for the possibility to include  $J_{\text{FM}}$  in the quasiclassical low-energy scale is violated for most SCs if  $J_{\text{FM}} > 0.1E_F$ .

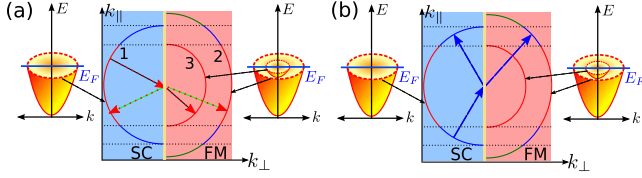


FIG. 1. (Color online) SC/sFM interface, showing the Fermi surfaces on either side (thick lines). Assuming momentum conservation parallel to the interface ( $\vec{k}_{\parallel}$ ), a quasiparticle incident from the SC can either scatter into two (a) or into only one (b) spin band of the FM.

To deal with the strong exchange splitting, we make use of the fact that it results in a rapid suppression of superconducting correlations between quasiparticle states with opposite spin, i.e., singlet ( $|\uparrow\downarrow\rangle - |\downarrow\uparrow\rangle$ ) or  $S_z=0$  triplet ( $|\uparrow\downarrow\rangle + |\downarrow\uparrow\rangle$ ) correlations. They decay on the short length scale  $\lambda_J = \hbar / (p_{F2} - p_{F3}) \ll \hbar v_{F2,3} / \Delta \equiv \xi_{0\eta}$ . Here  $p_{F2}$  and  $p_{F3}$  are the Fermi momenta of the two spin bands (2 and 3) in the sFM and  $\xi_{0\eta}$  with  $n=2,3$  the coherence lengths in the respective bands. Consequently, only equal-spin triplet correlations can penetrate the FM bulk. Hence we pursue the following approach to model a strongly polarized FM in the frame of QC theory. We define independent QC Green's functions (QCGF) for each spin band which are scalar in spin space, i.e., describe correlations with  $|\uparrow\uparrow\rangle$ , respectively,  $|\downarrow\downarrow\rangle$  spin-wave function. The boundary conditions must now match three QC propagators at the SC/FM interface, which we label  $\check{g}_{\eta}$  with  $\eta=1 \equiv \text{SC}$ ,  $\eta=2 \equiv \uparrow$  band and  $\eta=3 \equiv \downarrow$  band (see Fig. 1). These three QCGFs are formally obtained from

$$\check{g}(\vec{p}_{F\eta}, \vec{R}, \varepsilon, t) = \frac{1}{a(\vec{p}_{F\eta})} \int d\xi_{p\eta} \hat{\tau}_3 \check{G}(\vec{p}, \vec{R}, \varepsilon, t) \quad (6)$$

with  $\xi_{p\eta} = \vec{v}_{F\eta} \cdot (\vec{p} - \vec{p}_{F\eta})$ ,  $\vec{p}_{F\eta}$  and  $\vec{v}_{F\eta}$  being the respective Fermi momenta/velocities of the bands. Consequently, the current must then be evaluated for each band separately

$$\vec{j}_{\eta}(\vec{R}, t) = eN_{F\eta} \int \frac{d\varepsilon}{8\pi i} \text{Tr} \langle \vec{v}_{F\eta}(\vec{p}_{F\eta}) \hat{\tau}_3 \hat{g}_{\eta}^K(\vec{p}_{F\eta}, \vec{R}, \varepsilon, t) \rangle_{\eta}. \quad (7)$$

Here,  $N_{F\eta}$  is the partial density of states at the Fermi level in band  $\eta$ , and  $\langle \cdot \rangle_{\eta}$  denotes the corresponding Fermi-surface average

$$\langle \cdot \rangle_{\eta} = \frac{1}{N_{F\eta}} \int_{\text{FS}_{\eta}} \frac{d^2 p_{F\eta}}{(2\pi\hbar)^3 |\vec{v}_{F\eta}(\vec{p}_{F\eta})|} (\cdot), \quad (8)$$

$$N_{F\eta} = \int_{\text{FS}_{\eta}} \frac{d^2 p_{F\eta}}{(2\pi\hbar)^3 |\vec{v}_{F\eta}(\vec{p}_{F\eta})|}. \quad (9)$$

In addition, the system's properties vary on the atomic length scale in the interface region between the two materials. Thus the QC theory is also not applicable in the immediate proximity to the interface (on the scale of the Fermi wavelength). This is a general problem in the quasiclassical description of heterostructures, which can be circumvented by deriving appropriate boundary conditions for matching the QC propagators on both sides of the interface.<sup>72</sup> The full

boundary conditions for the present problem have been developed only recently.<sup>16</sup> Earlier works on Andreev spectra using QC theory were restraint to either SC/normal-metal contacts with spin-active interfaces,<sup>45,54,73,74</sup> or contacts with weak ferromagnets. We refer to Ref. 16 and references therein for a detailed discussion of this problem. In the following section we discuss a parameterization of the QC propagator and return to the problem of boundary conditions at the interface in Sec. II B.

### A. Riccati parameterization

For our calculations we choose a representation of the QCGF that has proven very useful in the past and is standard by now. In this representation, the Keldysh QCGF is determined by six parameters in particle-hole space,  $\gamma^{R,A}$ ,  $\tilde{\gamma}^{R,A}$ ,  $x^K$ , and  $\tilde{x}^K$  of which  $\gamma^{R,A}(\vec{p}_F, \vec{R}, \varepsilon, t)$  and  $\tilde{\gamma}^{R,A}(\vec{p}_F, \vec{R}, \varepsilon, t)$  are the retarded (R) and advanced (A) coherence functions, describing the coherence between particlelike and holelike states, whereas  $x^K(\vec{p}_F, \vec{R}, \varepsilon, t)$  and  $\tilde{x}^K(\vec{p}_F, \vec{R}, \varepsilon, t)$  are distribution functions, describing the occupation of quasiparticle states.<sup>75,76</sup> The coherence functions are a generalization of the so-called Riccati amplitudes<sup>77,78</sup> to nonequilibrium situations. All six parameters are  $2 \times 2$  spin-matrix functions of Fermi momentum, position, energy, and time. The parameterization is simplified by the fact that, due to symmetry relations, only two functions of the six are independent. The particle-hole symmetry is expressed by the operation  $(\tilde{\cdot})$ , which is defined for any function of the phase space variables by

$$\tilde{Q}(\vec{p}_F, \vec{R}, z, t) = Q(-\vec{p}_F, \vec{R}, -z^*, t)^*, \quad (10)$$

where  $z = \varepsilon$  is real for the Keldysh components and  $z$  is situated in the upper (lower) complex energy half plane for retarded (advanced) quantities. Furthermore, the symmetry relations

$$\gamma^A = (\tilde{\gamma}^R)^\dagger, \quad \tilde{\gamma}^A = (\gamma^R)^\dagger, \quad x^K = (x^K)^\dagger \quad (11)$$

hold. As a consequence, it suffices to determine fully the parameters  $\gamma^R$  and  $x^K$ .

The QCGF is related to these amplitudes in the following way [here the upper (lower) sign corresponds to retarded (advanced)]:<sup>16</sup>

$$\hat{g}^{R,A} = \mp 2\pi i \begin{pmatrix} \mathcal{G} & \mathcal{F} \\ -\tilde{\mathcal{F}} & -\tilde{\mathcal{G}} \end{pmatrix}^{R,A} \pm i\pi \hat{\tau}_3 \quad (12)$$

with the abbreviations  $\mathcal{G} = (1 - \gamma\tilde{\gamma})^{-1}$  and  $\mathcal{F} = \mathcal{G}\gamma$ , and

$$\hat{g}^K = -2\pi i \begin{pmatrix} \mathcal{G} & \mathcal{F} \\ -\tilde{\mathcal{F}} & -\tilde{\mathcal{G}} \end{pmatrix}^R \begin{pmatrix} x^K & 0 \\ 0 & \tilde{x}^K \end{pmatrix} \begin{pmatrix} \mathcal{G} & \mathcal{F} \\ -\tilde{\mathcal{F}} & -\tilde{\mathcal{G}} \end{pmatrix}^A. \quad (13)$$

Note that all multiplication and inversion operations include  $2 \times 2$  matrix algebra (and, more general, for time-dependent cases also a time convolution).

From the transport equation for the quasiclassical Green's functions one obtains a set of  $2 \times 2$  matrix equations of mo-

tion for the six parameters above.<sup>75,79</sup> For the coherence amplitudes this leads to Riccati differential equations,<sup>78</sup> hence the name Riccati parameterization. As we are interested in this paper only in the interface problem in relation to a point contact, the transport equations are not relevant for the problem at hand. For a point contact, the superconductivity is modified only in a very small spatial region and this modification can be neglected consistent with quasiclassical approximation. We assume that the half-space problem is solved and calculate the conductance across the point contact. For this, we turn now to the problem of solving the boundary conditions for the point contact.

## B. Boundary conditions

### 1. General case

The QCGF mixes particlelike and holelike amplitudes, and as a result the transport equations are numerically stiff, with exponentially growing solutions in both positive and negative directions along each trajectory, which must be projected out. A particular advantage of the coherence and distribution functions is that, in contrast to the QCGF, they have a stable integration direction for each trajectory. This direction coincides with their propagation direction, and is opposite for holelike and particlelike amplitudes as well as advanced and retarded ones. This allows to distinguish between incoming and outgoing amplitudes at the interface. We adopt the notation<sup>75</sup> that incoming amplitudes are denoted by small case letters and outgoing ones by capital case letters. Boundary conditions express outgoing amplitudes as functions of incoming ones and as functions of the parameters of the normal-state scattering matrix. They are formulated in terms of the solution of the equation<sup>16</sup>

$$[\Gamma_{k \leftarrow k'}]^R = \left[ \gamma'_{kk'} + \sum_{k_1 \neq k} \Gamma_{k \leftarrow k_1} \tilde{\gamma}_{k_1} \gamma'_{k_1 k'} \right]^R \quad (14)$$

for  $[\Gamma_{k \leftarrow k'}]^R$ , where the trajectory indices  $k$ ,  $k'$ , and  $k_1$  run over outgoing trajectories involved in the interface scattering process, and the scattering matrix parameters enter only via the “elementary scattering event”

$$[\gamma'_{kk'}]^R = \sum_p S_{kp}^R \gamma_p^R \tilde{S}_{pk'}^R \quad (15)$$

(the trajectory index  $p$  runs over all incoming trajectories). It is useful to split the quantity  $[\Gamma_{k \leftarrow k'}]^R$  into its forward-scattering contribution, which determines the quasiclassical coherence amplitude

$$\Gamma_k^R = \Gamma_{k \leftarrow k}^R, \quad (16)$$

and the remaining part

$$[\bar{\Gamma}_{k \leftarrow k'}]^R = [\Gamma_{k \leftarrow k'} - \Gamma_k \delta_{kk'}]^R, \quad (17)$$

which is relevant only for the Keldysh components. Analogous equations<sup>16</sup> hold for the advanced and particle-hole conjugated components,  $[\bar{\Gamma}_{p \leftarrow p'}]^R$ ,  $[\Gamma_{p' \rightarrow p}]^A$ , and  $[\bar{\Gamma}_{k' \rightarrow k}]^A$ . The boundary conditions for the distribution functions read<sup>16</sup>

$$X_k^K = \sum_{k_1, k_2} [\delta_{kk_1} + \bar{\Gamma}_{k \leftarrow k_1} \tilde{\gamma}_{k_1}]^R [x'_{k_1 k_2}]^K [\delta_{k_2 k} + \gamma_{k_2} \bar{\Gamma}_{k_2 \rightarrow k}]^A - \sum_{k_1} [\bar{\Gamma}_{k \leftarrow k_1}]^R \tilde{x}_{k_1}^K [\bar{\Gamma}_{k_1 \rightarrow k}]^A, \quad (18)$$

which depend on the scattering matrix parameters only via the elementary scattering event

$$[x'_{kk'}]^K = \sum_p S_{kp}^R x_p^K S_{pk'}^A. \quad (19)$$

Analogous relations hold for  $\tilde{x}_p^K$ .

### 2. Special case: SC/FM point contact

In the case under consideration the trajectory labels  $k$  and  $p$  run from 1 to 3, with 1 denoting (spin-degenerate) trajectories on the superconducting side, and 2 and 3 trajectories for the two spin directions on the ferromagnetic side. We use the following notation for the (unitary) scattering matrix:

$$S = \begin{pmatrix} R_1 & T_{12} & T_{13} \\ T_{21} & r_2 & r_{23} \\ T_{31} & r_{32} & r_3 \end{pmatrix}. \quad (20)$$

The current across the interface is conserved (this is ensured by our boundary conditions) so that it suffices to calculate the current density at the FM side of the interface. We proceed with expressing the outgoing amplitudes for bands 2 and 3 in terms of the incoming amplitudes and the scattering matrix.

For a point contact with semi-infinite SC and FM regions (assuming that the Thouless energy related to the geometry of the system is negligibly small), there are no incoming correlation functions from the FM side,  $\gamma_{2,3}^{R,A} = \tilde{\gamma}_{2,3}^{R,A} = 0$ , whereas on the SC side we can use the bulk solutions. For a singlet order parameter the bulk solutions of the coherence functions read

$$\gamma_1^{R,A} = - \frac{\Delta_s i \sigma_2}{\varepsilon \pm i \sqrt{|\Delta_s|^2 - \varepsilon^2}}, \quad \tilde{\gamma}_1^{R,A} = \frac{\Delta_s^* i \sigma_2}{\varepsilon \pm i \sqrt{|\Delta_s|^2 - \varepsilon^2}} \quad (21)$$

with the singlet superconducting order parameter  $\Delta_s$ . Taking into account these facts, we obtain from Eq. (14)

$$\Gamma_{2 \leftarrow 1}^R = [\gamma'_{21}]^R + \Gamma_{2 \leftarrow 1}^R \tilde{\gamma}_1^R [\gamma'_{11}]^R, \quad (22)$$

$$\Gamma_2^R = [\gamma'_{22}]^R + \Gamma_{2 \leftarrow 1}^R \tilde{\gamma}_1^R [\gamma'_{12}]^R, \quad (23)$$

$$\Gamma_{2 \leftarrow 3}^R = [\gamma'_{23}]^R + \Gamma_{2 \leftarrow 1}^R \tilde{\gamma}_1^R [\gamma'_{13}]^R \quad (24)$$

with  $[\gamma'_{ij}]^R = S_{i1} \gamma_1^R S_{1j}^*$  for  $i, j = 1, 2, 3$ . The first equation, Eq. (22), can be solved

$$\Gamma_{2 \leftarrow 1}^R = T_{21} \gamma_1^R R_1^* (1 - \tilde{\gamma}_1^R R_1 \gamma_1^R R_1^*)^{-1}. \quad (25)$$

It appears useful to introduce the notation

$$A = \Gamma_{2 \leftarrow 1}^R \tilde{\gamma}_1^R. \quad (26)$$

From Eqs. (23) and (24) we obtain

$$\Gamma_2^R = (T_{21} + AR_1) \gamma_1^R T_{12}^*, \quad (27)$$

$$\Gamma_{2 \leftarrow 3}^R = (T_{21} + AR_1) \gamma_1^R T_{13}^*. \quad (28)$$

Note that the identity  $T_{21} + AR_1 = T_{21}(1 - \gamma_1^R R_1^* \tilde{\gamma}_1^R R_1)^{-1}$  holds. The corresponding solutions for band 3 are simply obtained by replacing  $2 \leftrightarrow 3$ . Amplitudes  $\tilde{\Gamma}_2^R$  and  $\tilde{\Gamma}_{2 \leftarrow 3}^R$  are obtained using Eq. (10) with  $\tilde{S}_{ij} = S_{ij}^*$ . The required advanced amplitudes can be obtained from the fundamental symmetry relations of this formalism, which imply  $\tilde{\Gamma}_2^A = (\Gamma_2^R)^\dagger$  and  $\tilde{\Gamma}_{3 \rightarrow 2}^A = (\Gamma_{2 \leftarrow 3}^R)^\dagger$ .

For the distribution functions, we use a gauge in terms of *anomalous* components.<sup>16</sup> Taking the electrochemical potential equal to zero in the SC and equal to  $-eV$  in the ferromagnet, these are  $x_1 = \tilde{x}_1 = 0$  and

$$x_{2,3} = \tanh\left(\frac{\varepsilon + eV}{2k_B T}\right) - \tanh\left(\frac{\varepsilon}{2k_B T}\right),$$

$$\tilde{x}_{2,3} = -\tanh\left(\frac{\varepsilon - eV}{2k_B T}\right) + \tanh\left(\frac{\varepsilon}{2k_B T}\right). \quad (29)$$

Note that in our notation  $e = -|e|$ . From Eq. (18) we arrive at the following expressions for the outgoing Keldysh amplitudes for band 2:

$$X_2 = [x'_{22}]^K + \Gamma_{2 \leftarrow 1}^R \tilde{\gamma}_1^R [x'_{12}]^K + [x'_{21}]^K \gamma_1^A \tilde{\Gamma}_{1 \rightarrow 2}^A$$

$$+ \Gamma_{2 \leftarrow 1}^R \tilde{\gamma}_1^R [x'_{11}]^K \gamma_1^A \tilde{\Gamma}_{1 \rightarrow 2}^A - \Gamma_{2 \leftarrow 3}^R \tilde{x}_3 \tilde{\Gamma}_{3 \rightarrow 2}^A \quad (30)$$

with  $[x'_{ij}]^K = S_{i2} x_2 S_{j2}^\dagger + S_{i3} x_3 S_{j3}^\dagger$  for  $i, j = 1, 2, 3$ . Introducing what has been obtained before, we arrive at

$$X_2 = (r_2 + AT_{12})x_2(r_2 + AT_{12})^\dagger + (r_{23} + AT_{13})x_3(r_{23} + AT_{13})^\dagger$$

$$- (T_{21} + AR_1)(\gamma_1^R T_{13}^*) \tilde{x}_3 (\gamma_1^R T_{13}^*)^\dagger (T_{21} + AR_1)^\dagger. \quad (31)$$

Again, the corresponding solution for band 3 is obtained by replacing  $2 \leftrightarrow 3$ .

### III. INTERFACE MODEL

We consider a point contact with a diameter much smaller than the superconducting coherence length but still larger than the Fermi wavelength as shown in Fig. 2(a). A larger contact would result in a perturbation of the SC state, a smaller one would invoke conductance quantization.<sup>80</sup> This also allows for the decisive assumption of translational invariance on the scale of the Fermi wavelength  $\lambda_F$ . The region in the immediate vicinity of the interface cannot be described within QC theory. Instead, the normal-state scattering matrix of the interface must be obtained from microscopic calculations and then enters the QC theory through boundary conditions as outlined above.

The mechanism giving rise to spin-active scattering at the interface is the ferromagnetic exchange field in both the

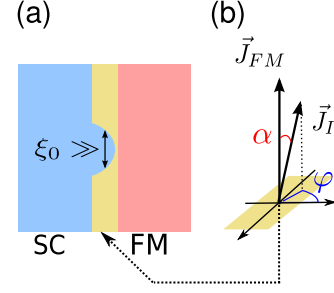


FIG. 2. (Color online) (a) The Andreev point contact with spin-active interface; (b) The spherical angles  $\alpha$  and  $\varphi$  characterize the orientation of the interface exchange field  $\vec{J}_I$  with respect to the FM exchange field  $\vec{J}_{FM}$ . The dashed arrow indicates the area where the misaligned interface magnetic moment resides.

adjacent ferromagnetic material and in the interface itself. The interface will in general carry a magnetic moment that in the simplest case is induced by the magnetization of the bulk ferromagnetic material; however, there might be cases where an extra interface magnetic moment develops, either manufactured by using a thin magnetic layer or due to spin-orbit coupling, and related to that, magnetic anisotropy. The interface magnetic moment can be misaligned with the one of the bulk sFM. We characterize this misalignment by two spherical angles  $\alpha$  and  $\varphi$ , as indicated in Fig. 2(b). While the spin activity of interfaces has been discussed extensively in the theory of superconducting heterostructures, most of the work so far considered a set of phenomenological parameters for characterizing the interfacial scattering. Notably, one of these parameters, the so-called spin-mixing angle, or spin-dependent phase shift, turned out to be of decisive importance for the creation of unconventional superconducting correlations in proximity to the interface. The spin-mixing angle is essentially a relative phase difference between  $\uparrow$  and  $\downarrow$  electrons acquired upon scattering. Obviously, an exchange field in the interface region will provide such an effect but other mechanisms, such as, for instance, spin-orbit coupling are also candidates.

So far, estimates of the possible magnitude of this effect based on a physical model of the interface region are still lacking. Here, we will provide such an analysis based on wave-function matching techniques. In particular, we will discuss the dependence of the spin-mixing effect on the shape of the barrier. To this end, we consider a spin-split potential barrier which is assumed to conserve the momentum component parallel to the interface upon scattering. For the system we deal with, this gives rise to two types of transmission events (see Fig. 1). Depending on the impact angle the parallel momentum conservation constraint either allows for or prohibits scattering that involves the minority spin band of the sFM. For a half metal, where the  $\downarrow$  band is completely insulating, only the latter case occurs.

#### A. Interface scattering matrix

At this point we present some general considerations concerning the scattering matrix of a spin-active interface. Such a matrix is unitary and of dimensions  $4 \times 4$  in the FM and

$3 \times 3$  in the HM case. The maximum number of free parameters is 16 or 9, respectively. However, not all of these parameters will be relevant for the physical problem at hand. For instance, spin-scalar phase factors do only matter for two or more interfaces. Furthermore, since a singlet SC is spin isotropic, one is free to choose the spin-quantization axis in the SC conveniently. To clearly identify these irrelevant parameters we use a special parameterization of a general unitary matrix with the aforementioned dimensions as discussed in the Appendix. The most important result of these considerations is that the spin-mixing effect can be fully described by only one parameter in the HM case, but three are required in the FM case.

Neglecting irrelevant spin-scalar phases and using the gauge freedom in the SC the scattering matrix reads for the first type of scattering

$$S_{\text{FM}} = \begin{pmatrix} r_{1\uparrow} e^{i\vartheta/2} & r_{1\uparrow\downarrow} & t_2 e^{i\vartheta_2/2} & t'_3 e^{i\vartheta_3/2} \\ r_{1\uparrow\downarrow} & r_{1\downarrow} e^{-i\vartheta/2} & t'_2 e^{-i\vartheta_2/2} & t_3 e^{-i\vartheta_3/2} \\ t_2 e^{i\vartheta_2/2} & t'_2 e^{-i\vartheta_2/2} & r_2 & r_{23} \\ t'_3 e^{i\vartheta_3/2} & t_3 e^{-i\vartheta_3/2} & r_{23} & r_3 \end{pmatrix}. \quad (32)$$

The scattering matrix for the second, HM type, scattering is

$$S_{\text{HM}} = \begin{pmatrix} r_{1\uparrow} e^{i\vartheta/2} & r_{1\uparrow\downarrow} & t_2 e^{i\vartheta/4} \\ r_{1\uparrow\downarrow} & r_{1\downarrow} e^{-i\vartheta/2} & t'_2 e^{-i\vartheta/4} \\ t_2 e^{i\vartheta/4} & t'_2 e^{-i\vartheta/4} & r_2 \end{pmatrix}. \quad (33)$$

There is also the possibility of total reflection with no transmission on either side, in which case the scattering matrix consists of the reflection parts only. In writing the scattering matrices in Eqs. (32) and (33) we have put the  $\varphi$  phase that appears in Fig. 2(b) to zero since the problem we consider is invariant with respect to rotation of the interface magnetic moment around the bulk magnetization; the scattering matrix is symmetric in this case,  $S=S^T$ . We also omitted possible complex phases in the reflection part on the FM side, i.e.,  $r_2$ ,  $r_3$ , and  $r_{23}$ , as they are irrelevant to the problem at hand. The requirement of unitarity leads to additional relations between the reflection and transmission parameters. The phases that we wrote explicitly in Eqs. (32) and (33) are crucial since they account for the spin-mixing effect. In the following section, we will discuss their magnitude as a function of various interface parameters.

Using the set of independent parameters described in the Appendix we have

$$\begin{aligned} r_{1\uparrow} &= r_{\uparrow} \cos(\alpha_Y/2)^2 + r_{\downarrow} \sin(\alpha_Y/2)^2, \\ r_{1\downarrow} &= r_{\uparrow} \sin(\alpha_Y/2)^2 + r_{\downarrow} \cos(\alpha_Y/2)^2, \\ r_{1\uparrow\downarrow} &= -(r_{\uparrow} - r_{\downarrow}) \frac{\sin(\alpha_Y)}{2}. \end{aligned} \quad (34)$$

The angle  $\alpha_Y$  defines a rotation in spin space to the interface eigenstates, characterized by transmission and reflection eigenvalues. Its precise definition is given in the Appendix. Most importantly, it is, in general, not identical to the interface misalignment angle  $\alpha$ , however approaches it in the

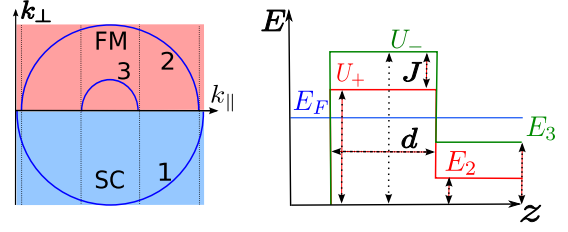


FIG. 3. (Color online) Sketch of the box-potential model that we consider in this section (right) and of the corresponding Fermi surface geometry (left). The model parameters are indicated.

limit of thick interfaces. For thin interfaces it is renormalized by the influence of the exchange field of the adjacent FM.  $r_{\uparrow}$  and  $r_{\downarrow}$  are the singular values of the reflection block  $R_1$ . In the tunneling limit,  $r_{\uparrow}, r_{\downarrow} \approx 1$ , and the off-diagonal elements vanish even for  $\alpha_Y \neq 0$ . This is easily understood from a physical point of view since spin-flip reflections on the SC side requires that the reflected quasiparticles “feel” both misaligned exchange fields,  $\vec{J}_1$  and  $\vec{J}_{\text{FM}}$ , and not just that of the interface. It is possible to provide analogous expressions for the remaining parameters of the scattering matrix, however in the sFM case they are rather cumbersome and also not needed for the following analytical discussion. For the half-metallic case, the only relevant phase parameter is the spin-mixing angle  $\vartheta$  and for the remaining parameters we have  $r_{\downarrow} = 1$ , and

$$t_2 = t_{\uparrow} \cos\left(\frac{\alpha_Y}{2}\right), \quad t'_2 = -t_{\uparrow} \sin\left(\frac{\alpha_Y}{2}\right), \quad r_2 = -r_{\uparrow}. \quad (35)$$

In the following we will discuss the influence of the shape of the scattering potential and will show that the widely used box shaped or delta-function-shaped potentials gravely underestimate the magnitude of the spin-mixing effect.

## B. Box-shaped scattering potential

In this section we consider spin-dependent box potentials, for which analytical solutions can be obtained. In particular, we discuss here the dependence of the spin-mixing angle,  $\vartheta$  on the impact angle of the incoming quasiparticle which is parameterized by the momentum component parallel to the interface,  $k_{\parallel}$ . The model parameters are the misalignment angle  $\alpha$  [see Fig. 2(b)], the energies of the band minima in the FM with respect to that in the SC ( $E_2, E_3$ ), the spin-dependent height of the potential ( $U_+, U_-$ ) and the width of the potential  $d$  (see Fig. 3). All energies are given in units of  $E_F$  and  $d$  in units of  $\lambda_F/2\pi$  with  $\lambda_F = 2\pi/k_F$  the Fermi wavelength in the superconductor.

The scattering matrix is defined with respect to the chosen spin-quantization axes on both sides of the interface. Naturally, on the FM side we use the bulk sFM magnetization axis. On the SC side we use that of the interface magnetic moment. To obtain an  $S$  matrix with the structure defined above, one must subsequently calculate and apply a rotation of the quantization axis in the SC

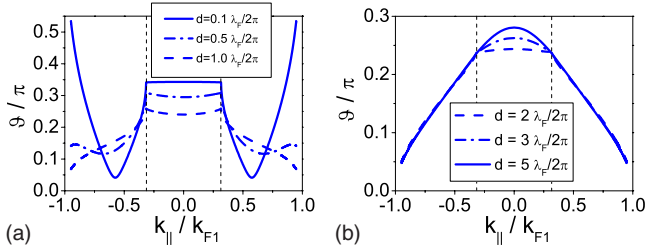


FIG. 4. (Color online) The spin-mixing angle  $\vartheta$  as function of the momentum component parallel to the interface, shown for various barrier thicknesses. (a)  $d=0.1, 0.5$ , and  $1.0\lambda_F/2\pi$ , (b)  $d=2.0, 3.0$ , and  $5.0\lambda_F/2\pi$ . The remaining parameters are  $E_2=0.1E_F$ ,  $E_3=0.9E_F$ ,  $U_+=1.1E_F$ ,  $U_-=1.9E_F$ , and  $\alpha=0.5\pi$  (see text and Fig. 3).

$$\begin{pmatrix} Q^\dagger & 0 \\ 0 & 1 \end{pmatrix} \hat{S} \begin{pmatrix} Q & 0 \\ 0 & 1 \end{pmatrix}, \quad (36)$$

where  $Q$  is a spin rotation matrix acting on spins in the superconductor. We describe this procedure in the Appendix. All the quantities plotted are calculated in this rotated frame, the point being that otherwise one does not have an unambiguous definition of the mixing phases. Naturally, the Andreev spectra are invariant under these transformations. We obtain the scattering matrix by matching wave functions as described in the Appendix.

In Figs. 4(a) and 4(b) we show the spin-mixing angle for different values of the interface potential width  $d$ . The band minima in the FM are  $E_2=0.1E_F$  and  $E_3=0.9E_F$ , which implies that at  $k_{||} \geq 0.31k_{F1}$  the minority band becomes insulating and the scattering matrix reduces to a  $3 \times 3$  matrix. In the tunneling limit ( $d \gg \lambda_F/2\pi$ ) the spin-mixing angle behaves as expected: it is approximately given by the value (see Appendix)

$$\vartheta = 2 \left[ \arctan\left(\frac{k_1}{\kappa_+}\right) - \arctan\left(\frac{k_1}{\kappa_-}\right) \right], \quad (37)$$

which approaches zero for grazing impact ( $k_1 \approx 0$ ), and  $2[\arctan\sqrt{E_F/(U_+-E_F)} - \arctan\sqrt{E_F/(U_--E_F)}] \approx 0.29\pi$  for Fig. 4) for normal impact. Here,  $k_1$  is the component of the wave vector perpendicular to the interface in the superconductor and  $\kappa_{\pm}$  are the exponential decay factors for the spin-up/down wave functions in the barrier. For thin (highly transparent) interfaces the mixing angle  $\vartheta$  is a more complicated function of the quasiparticle impact angle. In this regime,  $\vartheta$  is predominantly controlled by the Fermi-surface geometry indicated in Fig. 3. There is a local minimum at  $k_{||} > k_{F3}$  and for very thin interfaces  $\vartheta$  is largely enhanced for grazing impact ( $d=0.1\lambda_F/2\pi$  in Fig. 4). This enhancement can be understood from the  $d=0$  limit, i.e., the case where the interface barrier is absent. In this case

$$\vartheta = \pi - 2 \arctan\left(\frac{k_1}{\kappa_3}\right), \quad (38)$$

where  $\kappa_3$  corresponds to the imaginary wave vector in the insulating band 3, which controls the exponential decay of the spin-down wave function into the ferromagnet. In the particular case we show here, see Fig. 3,  $k_1$  takes a finite

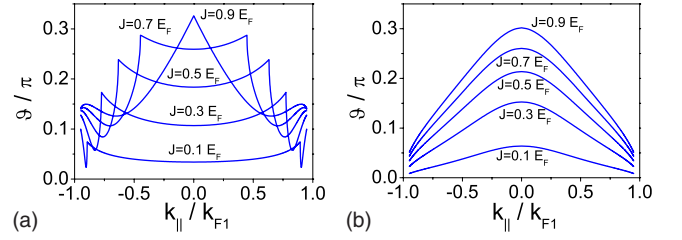


FIG. 5. (Color online) (a) Spin-mixing angle  $\vartheta$  as a function of impact angle for (a)  $d=0.5\lambda_F/\pi$  and (b)  $d=5.0\lambda_F/2\pi$ . In both plots, the curves are for  $U_-=1.2, \dots, 2.0E_F$ ,  $E_3=U_--1.0$ . The corresponding value of the exchange field  $J$  is indicated. The remaining parameters are  $E_2=0.1E_F$ ,  $U_+=1.1E_F$ , and  $\alpha=0.5\pi$ .

value for all trajectories that contribute to the current while  $\kappa_3$  increases monotonously from 0 at  $k_{||}=k_{F3} \approx 0.31k_{F1}$  to some finite value at  $k_{||}=k_{F2}$ . This is because the effective height of the potential for tunneling into the insulating band increases with  $k_{||}$ . For Fermi-surface geometries with  $k_{F1} < k_{F2}$  (not shown here) the wave vector  $k_1$  drops to zero for grazing impact and so does the spin-mixing angle.

In the present case, the situation is complicated by the fact that we consider both a finite interlayer and a broken spin-rotation symmetry. This leads to a finite spin-mixing angle even for  $k_{||}=k_{F3}$  and below, which leads to the nontrivial behavior with a minimum for intermediate impact angles. This illustrates that not only the scattering potential itself but also the Fermi-surface geometry is highly important for spin-active scattering beyond the tunneling limit.

As for the magnitude of the mixing effect, we stress that for a realistic choice of parameters, it is hardly possible to achieve mixing-phases above  $0.5\pi$  in this model. In Fig. 4 we use an exchange field of  $J=0.8E_F$ , which is close to the half-metallic limit. Using smaller exchange energies naturally leads to a smaller effect, as can be seen in Figs. 5(a) and 5(b), where we plot  $\vartheta$  for different values of the exchange field  $J=E_3-E_2$ .

In Fig. 6 we show the spin-mixing phases associated to transmission,  $\vartheta_2$  and  $\vartheta_3$ . One can see that  $\vartheta_2 = \vartheta/2$  for  $k_{||} > 0.31k_{F1}$ . This relation one would expect for a SC contacted with a half-metallic ferromagnet; the finding in Fig. 6 is consistent with this and the discussion presented above since the trajectories under consideration effectively correspond to the HM case. For  $k_{||} < 0.31k_{F1}$ , the mixing phase is considerably enhanced above the value of  $\vartheta/2$ . The plots also illustrate that  $\vartheta_2$  and  $\vartheta_3$  are different in magnitude and also vary differently with  $k_{||}$ . As we show in the Appendix, the mixing-phases  $\vartheta_2$  and  $\vartheta_3$  are correlated with  $\vartheta$  but in general also depend on a number of other free parameters. Their magnitude is decisive for the creation of triplet correlations in the corresponding band as we will show below.

In Fig. 7 we present the product  $|t_{\uparrow\uparrow'}|$  (which controls the magnitude of long-range SAR). We plot this quantity for both the majority (upper row) and minority (lower row) band of the FM. Apparently there is a nonmonotonous dependence on the interface width  $d$ , which is related to the fact that spin-flip scattering becomes more effective as the interface region becomes larger. For even larger  $d$  the global suppression of transmission intervenes and we approach the tunnel-

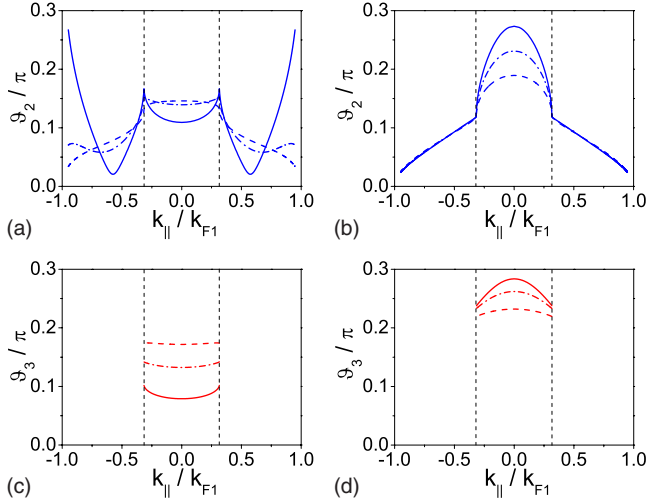


FIG. 6. (Color online) The spin-mixing angles  $\vartheta_2(k_{||})$  [(a) and (b)], and  $\vartheta_3(k_{||})$  [(c) and (d)], for thin [left column:  $d=0.1$  (solid),  $0.5$  (dashed-dotted), and  $1.0$  (dashed)  $\lambda_F/2\pi$ ] and thick [right column:  $d=2$  (dashed),  $3$  (dashed-dotted),  $5$  (solid)  $\lambda_F/2\pi$ ] interfaces. The remaining parameters are the same as in Fig. 4.

ing limit. Again, we note that for thin interfaces the dependence on trajectory impact angle is nonmonotonous, showing maxima for nonperpendicular impact. These maxima coincide exactly with the minima of the spin-mixing angle. Note that a nonzero  $t'_\eta$  requires a nonvanishing misalignment angle  $\alpha$ .

To conclude on this section, we have shown that the magnitude of the spin-mixing effect is limited to rather small values in the box potential case if one assumes  $J < E_F$  and  $d \approx \lambda_F$ . Moreover, both spin-mixing effect and spin-flip scattering are very sensitive to trajectory impact, interface thickness, exchange field of the interface, and the Fermi surface geometry of the adjacent materials.

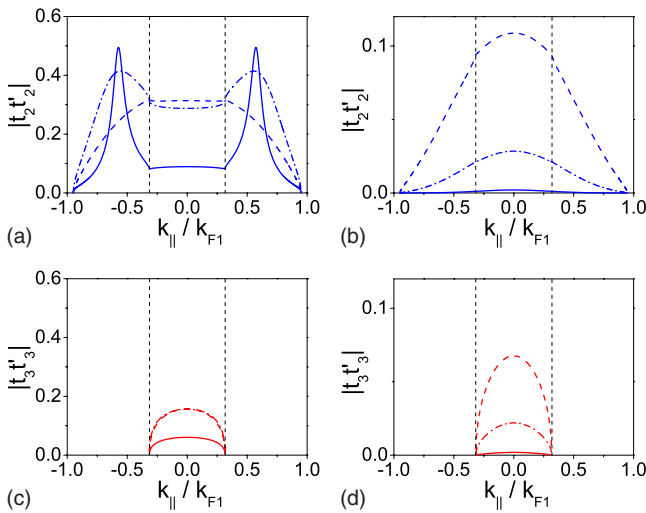


FIG. 7. (Color online) The transmission parameters  $|t_2 t'_2| (k_{||})$  [(a) and (b)], and  $|t_3 t'_3| (k_{||})$  [(c) and (d)], for thin [left column:  $d=0.1$  (solid),  $0.5$  (dashed-dotted),  $1.0$  (dashed)  $\lambda_F/2\pi$ ] and thick [right column:  $d=2$  (dashed),  $3$  (dashed-dotted),  $5$  (solid)  $\lambda_F/2\pi$ ] interfaces. The remaining parameters are the same as in Fig. 4.

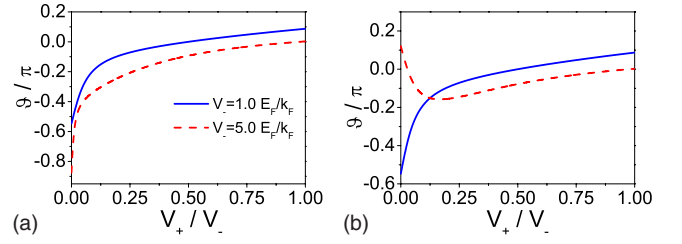


FIG. 8. (Color online) (a) Spin-mixing angle  $\vartheta$  as a function of  $V_+/V_-$  for the delta-function potential.  $E_2=0.1E_F$  and  $E_3=0.7E_F$ . (b) The same as (a) for  $E_2=-0.7E_F$  and  $E_3=-0.1E_F$ .

### C. Delta-function scattering potential

A special case of the box-shaped potential is that of the delta-function potential that is widely used in describing interfaces within the BTK paradigm. Here, we show that the situation is in this case comparable to that of the box potential. Delta-function models introduce a weight factor  $V_0$  of the Delta function which enters the matching condition for wave-function derivatives

$$\frac{d}{dz}\Psi_1(z=0) - \frac{d}{dz}\Psi_2(z=0) = \frac{2mV_0}{\hbar^2}\Psi_2(z=0). \quad (39)$$

A spin-dependent potential can simply be modeled by choosing a spin-dependent weight factor  $V_\pm$ . This weight factor effectively corresponds to the area under the scattering potential, i.e., we have  $V_\pm = (U_\pm - E_F) \cdot d$ , to connect with the notation above. In Fig. 8 we plot  $\vartheta$  as a function of  $V_+/V_-$  for perpendicular impact and two different choices of the Fermi-surface geometry. Since we do not calculate any spectra for this model, we choose  $\alpha=0$  for simplicity. Generically, spin-mixing angles  $\vartheta > 0.5\pi$  can only be reached for  $V_+/V_- < 0.1$ , which requires either  $V_+$  to be very small or an interface exchange field exceeding the Fermi energy.

### D. Scattering potentials with arbitrary shape

The box potential actually constitutes a high degree of idealization. The most obvious generalization is to consider a potential that varies smoothly on the scale of a few interatomic distances or on the scale of the Fermi wavelength in metals.<sup>81</sup> This is quite realistic taking into account that metallic screening of charges takes place only on the Thomas-Fermi wavelength scale. In addition, some magnetic ions might penetrate the superconductor from the ferromagnet, leading to a spin-dependent potential that decays in the bulk of the superconductor. In the latter case a certain degree of disorder is introduced. However, we will assume that any such disorder is weak so that the momentum component parallel to the interface is still a good quantum number. A truly realistic description would have to drop the assumption of translational invariance and consider disorder on a microscopic level. In principle, our theory can be extended to this regime but this is beyond the scope of this paper. If one is only interested in transmission and reflection *amplitudes*, the difference between the box-shape and a smoothed potential is negligible. But when scattering phases are important, as in our case, this is not true, as we will show in the following.



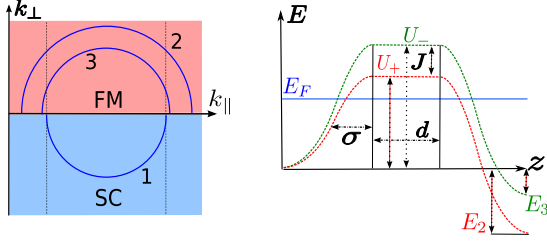


FIG. 9. (Color online) Sketch of the scattering potential for the smooth potential model (right) and the here considered Fermi-surface geometry (left). The parameters introduced in Eq. (40) are indicated.

For definiteness, we consider a potential shape as shown in Fig. 9, with Gaussian “slopes.” The “smoothness” of the interface barrier is then controlled by the standard deviation  $\sigma$  of the Gaussian. Hence, we have the spin-dependent potential

$$U_{\pm} = \begin{cases} (V_1 \pm J/2)e^{-(z+d)^2/\sigma^2} & z < -d \\ V_1 \pm J/2 & -d < z < 0 \\ E_{\eta} + (V_1 \pm J/2 - E_{\eta})e^{-z^2/\sigma^2} & z > 0. \end{cases} \quad (40)$$

In the limit of a very smooth potential, one may resort to the Wentzel-Kramers-Brillouin (WKB) approximation<sup>82</sup> to calculate the scattering problem. An interface that complies to the requirements of WKB would have to be much larger than the Fermi wavelength however, which is unrealistic. For this reason we resort to a numerical method for calculating the scattering problem. We use a recursive Green’s function technique<sup>83</sup> to calculate the single-particle Green’s function of the interface Hamiltonian and obtain the scattering matrix from it using the Fisher-Lee relations.<sup>84</sup> To study the effect of the potential shape on the spin-mixing angle, we plot the angle  $\vartheta$  in Fig. 10(b) for different values of  $\sigma$ . To avoid a large variation in the interface transmission when varying  $\sigma$ , we keep  $d+\sigma=0.7\lambda_F$  [see Fig. 10(a)].

Furthermore, we use  $E_2, E_3 < 0$  here, i.e., both the FM bands have a larger Fermi surface than the SC. As we will see later on, this Fermi-surface geometry and the scattering constraints it implies can have an important effect on the shape of the spectra, and in particular, on features which are related to the spin-mixing effect.

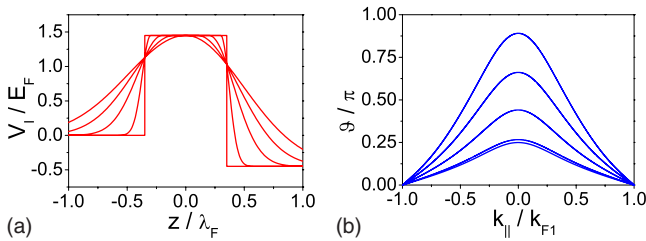


FIG. 10. (Color online) (a) Shape function of the scattering potential (average between both spin directions) for  $\sigma=0, \dots, 0.7\lambda_F$  and  $\sigma+d=0.7\lambda_F$ , and  $E_2=-0.1E_F$ , and  $E_3=-0.8E_F$ . (b) The spin-mixing angle  $\vartheta$  as a function of impact angle for the different potentials plotted in (a).  $\sigma$  increases from bottom to top.

The main result of considering a variation in the potential shape is however that it has a tremendous effect on the spin-mixing angle, as clearly seen in Fig. 10(b). Its magnitude can exceed for a smooth potential that for a box potential of similar transmission easily by a factor of 3–4 or more. This is sufficient to observe some exotic features related to this effect in the Andreev spectra of point contacts as discussed in the next section. The physical reason for this is that, unlike in the box potential case, electrons with opposite spins acquire a phase difference while they are still propagating, which implies that a larger mixing phase is not inevitably tied to a strongly reduced transmission. This can be best seen in the WKB limit, where the mixing angle is exclusively given by this dephasing

$$\vartheta = 2 \left[ \int_{-\infty}^{z_{\uparrow}} dz p_{\uparrow}(z) - \int_{-\infty}^{z_{\downarrow}} dz p_{\downarrow}(z) \right]. \quad (41)$$

Here  $p_{\uparrow, \downarrow} = \sqrt{2m(E_F - U_{\pm})}$  and  $z_{\uparrow, \downarrow}$  are the classical return points for the respective spin bands (see Fig. 3 for the notation). In the intermediate case that we consider here both the different wave-vector mismatches and the dephasing of propagating modes will add to the mixing effect. Note that only the shape on the SC side of the interface matters for boosting the spin-mixing angle  $\vartheta$ .

The discussion in terms of scattering-matrix parameters presented here is flexible enough to be extended, e.g., to other Fermi surface geometries or adiabatic variation in the interface magnetization. Furthermore, instead of insulating interfaces one could consider interfaces where one or even both channels are conducting. The latter case has been considered by Béri *et al.*<sup>14</sup>

#### IV. ANDREEV CONDUCTANCE SPECTRA OF SC/FM POINT CONTACTS

In the remaining part of the paper we discuss Andreev spectra that result from our model. We use a definition for the FM’s spin polarization given by

$$P = \frac{N_{F2} - N_{F3}}{N_{F2} + N_{F3}}. \quad (42)$$

For parabolic bands, the density of states is proportional to the Fermi momentum,  $N_{F\eta} \propto p_{F\eta} \propto \sqrt{E_F - E_{\eta}}$ . We assume equal effective masses.

The current density in terms of the distribution functions and coherence functions is given by

$$\vec{j}_{\eta} = -\frac{eN_{F\eta}}{2} \int d\varepsilon \langle \vec{v}_{\eta} \cdot j_{\varepsilon, \eta} \rangle_{\eta+}, \quad (43)$$

$$j_{\varepsilon, \eta} = X_{\eta} - x_{\eta} - \Gamma_{\eta}^R \tilde{\chi}_{\eta} \tilde{\Gamma}_{\eta}^A, \quad (44)$$

where the expression for  $j_{\varepsilon, \eta}$  is given by

$$j_{\varepsilon, 2} = x \{ |r_2 + AT_{12}|^2 + |r_{23} + AT_{13}|^2 - 1 \} - \tilde{x} \{ |(T_{21} + AR_1)(\gamma_1 T_{13}^*)|^2 + |(T_{21} + AR_1)(\gamma_1 T_{12}^*)|^2 \} \quad (45)$$

and an analogous expression is obtained for  $j_{\varepsilon, 3}$  by inter-

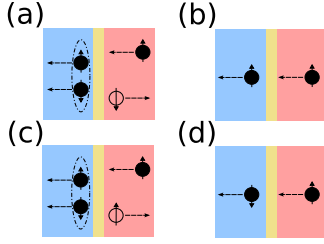


FIG. 11. (Color online) Transport processes contributing to the current through the point contact (a) Normal AR (b) Normal transmission, requires  $\varepsilon > \Delta$  (c) SAR, and (d) Spin-flip transmission, requires  $\varepsilon > \Delta$ .

changing 2 with 3. Here,  $\langle \bullet \rangle_{\eta\uparrow}$  means a Fermi-surface average over one half of the Fermi surface (positive momentum directions, pointing into the FM, for the first and third term of Eq. (44), negative directions for the second term). To derive this expression, we used the universal symmetry relation in Eq. (10). Furthermore  $x=x_2=x_3$  as defined in Eq. (29),  $A$  is defined in Eq. (26) and the scattering matrix parameters in Eq. (20). Equations (43)–(45) are the main result of this paper.

The interpretation of Eqs. (31) and (44) allows for identifying two types of Andreev reflection, shown in Fig. 11, one of them giving rise to a long-range proximity effect in the FM. The terms  $\Gamma_{2x_2}^R \tilde{\Gamma}_2^A$  in Eq. (44) and  $\Gamma_{2\leftarrow 3}^R \tilde{\Gamma}_{3\rightarrow 2}^A$  entering  $X_2$  in Eq. (30) both describe current contributions from Andreev reflected holes to the current in band 2. The first term is proportional to the incoming distribution function in the same band. Thus we refer to it as SAR, as it requires a spin flip to transmit a singlet pair into the SC. The second term corresponds to normal Andreev reflection since it reflects a hole in the opposite band. While SAR is related to the outgoing (equal-spin) triplet correlation function in the respective band, AR is described as a term renormalizing the outgoing distribution function. Unlike SAR, AR does not contribute to the coherence functions in the FM spin bands.

Using the scattering-matrix parameterization introduced in Sec. III, we can obtain explicit analytical solutions for the coherence functions

$$\Gamma_{\eta}^R = \left[ \frac{T_{\eta 1} \hat{N} i \hat{\sigma}_y T_{1\eta}^*}{D} \right]^R \quad \Gamma_{2\leftarrow 3}^R = \left[ \frac{T_{31} \hat{N} i \hat{\sigma}_y T_{12}^*}{D} \right]^R, \quad (46)$$

$$\hat{N} = \gamma(1 + \gamma\tilde{\gamma}[e^{-i\vartheta\sigma_z}(\rho + \rho_s) - \rho_s + 2\hat{\rho}\sigma_y \sin(\vartheta/2)]), \quad (47)$$

$$D = 1 + 2\gamma\tilde{\gamma}[\rho \cos \vartheta - \rho_s(1 - \cos \vartheta)] + (\gamma\tilde{\gamma})^2 \rho^2, \quad (48)$$

$$\rho = r_{\uparrow} r_{\downarrow} \quad \rho_s = (r_{\uparrow} - r_{\downarrow})^2 \frac{\sin^2(\alpha_Y)}{4}, \quad (49)$$

$$\hat{\rho} = \sqrt{\rho_s} \text{diag}[r_{\uparrow} \cos^2(\alpha_Y/2) + r_{\downarrow} \sin^2(\alpha_Y/2), \\ r_{\downarrow} \cos^2(\alpha_Y/2) + r_{\uparrow} \sin^2(\alpha_Y/2)].$$

Here  $\eta \in \{2, 3\}$ , and we omitted the index 1 for the incoming coherence functions.  $\gamma^R$  is related to  $\gamma_1^R$  in Eq. (21) by

$\gamma^R i \sigma_y = \gamma_1^R$ . The advanced component  $\tilde{\Gamma}_{\eta}^A$  is obtained via  $\tilde{\Gamma}_{\eta}^A = (\Gamma_{\eta}^R)^*$ .

Note that the  $\Gamma$  functions differ only by the transmission vectors  $T$ , but since the numerator is a matrix product, this still gives expressions that differ markedly. In any case, we have  $\Gamma_{\eta}^R = 0$  if  $\alpha_Y = 0$  or if  $\vartheta$  and  $\vartheta_{\eta} = 0$ . We focus on the denominator, Eq. (48), which arises from the matrix inversion in Eq. (25) and is the same for all coherence functions. It is of particular interest since it leads to the emergence of conductance peaks in the Andreev spectrum.

### A. Andreev bound-state spectrum

The appearance of the Andreev conductance peaks can be seen most clearly in the tunneling limit. Here  $\rho_s = 0$  and  $\rho = 1$  which simplifies the expressions above considerably. The full solutions read

$$\Gamma_{\eta}^R = \left[ 2it_{\eta} t'_{\eta} \gamma \frac{\sin \vartheta_{\eta} - \sin(\vartheta - \vartheta_{\eta}) \gamma \tilde{\gamma}}{1 + (\gamma \tilde{\gamma})^2 + 2 \cos(\vartheta) \gamma \tilde{\gamma}} \right]^R, \quad (50)$$

$$\Gamma_{2\leftarrow 3}^R = \left[ \gamma \frac{\tau + \tau_{\vartheta} \gamma \tilde{\gamma}}{1 + (\gamma \tilde{\gamma})^2 + 2 \cos(\vartheta) \gamma \tilde{\gamma}} \right]^R \quad (51)$$

with

$$\tau^R = t_2 t_3 e^{i\vartheta_{23}} - t_{23} t_{32} e^{-i\vartheta_{23}},$$

$$\tau_{\vartheta}^R = t_2 t_3 e^{i(\vartheta_{23} - \vartheta)} - t_{23} t_{32} e^{-i(\vartheta_{23} - \vartheta)},$$

$$\vartheta_{23} = (\vartheta_2 + \vartheta_3)/2.$$

For  $\varepsilon < \Delta$  we have  $\tilde{\gamma}^R = -\gamma^R$  and  $|\gamma^R| = 1$  and we can easily show that Eqs. (50) and (51) both have a pole at<sup>54</sup>

$$\varepsilon_{\text{pole}} = \pm \Delta \cos(\vartheta/2). \quad (52)$$

This pole corresponds to an Andreev bound state induced by the spin-mixing effect at the superconducting side of the sample. Following Fogelström,<sup>54</sup> one can show that these bound states appear in the DOS of the superconductor close to the interface and are actually associated to different spins. For  $\pi \geq \vartheta \geq 0$ , the bound state for  $\varepsilon > 0$  appears in the DOS of  $\uparrow$  quasiparticles and that for  $\varepsilon < 0$  in that of  $\downarrow$  quasiparticles. The appearance of the subgap peak is only tied to the spin-mixing angle  $\vartheta$ . It does not depend on spin-flip scattering or the mixing phases associated to transmission. However, we shall see that a high mixing angle of  $\geq 0.5\pi$  is required to make this bound state appear in a finite-temperature spectrum. If we consider the full expression of the denominator, Eq. (48), we find that the pole is lifted, yet two local maxima remain (see Fig. 12) which decrease in magnitude with increasing transparency of the interface, as the bound state acquires a finite lifetime. Obviously, a tunneling barrier in addition to an appreciable mixing effect is required to observe a subgap peak in the Andreev spectrum.

In the half-metallic case, the full solution for the outgoing coherence function reads

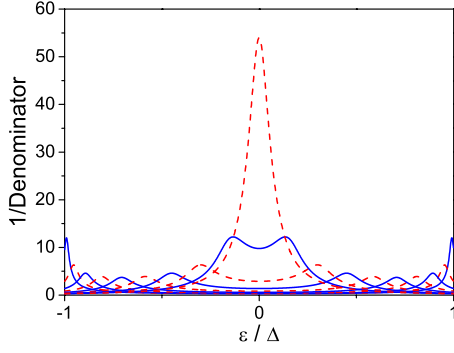


FIG. 12. (Color online) The denominator of Eq. (46) as a function of the quasiparticle energy  $\varepsilon$ .  $r_{\uparrow}=0.9$ ,  $r_{\downarrow}=0.95$ , and  $\alpha_{\gamma}=0.5\pi$ . Plots for  $\vartheta=0.1\pi, \dots, 1.0\pi$  in steps of  $0.1\pi$ . The maximum moves closer to zero energy with increasing  $\vartheta$ .

$$\Gamma_2^R = \frac{-iT_{\alpha}t^2(1+r)\gamma^R(1-\gamma^R\tilde{\gamma}^R)}{1+\gamma^R\tilde{\gamma}^R[2r\cos\vartheta-T_{\alpha}^2t^4]+(\gamma^R\tilde{\gamma}^R)^2r^2} \quad (53)$$

with  $T_{\alpha}=\sin(\vartheta/2)\sin(\alpha_{\gamma})/(1+r)$ . This solution is already discussed in Ref. 16 but we state it here again to comment on a recent result obtained by Béri *et al.*<sup>14</sup> Using a different approach to calculate the conductance of a SC/HM point contact, they find that generically  $G(eV=0)=0$ , at zero temperature. This agrees perfectly with our results. One can show that below the gap

$$G(eV) \propto |\Gamma_2^R(\varepsilon)|^2 \gamma_{\downarrow\chi}(\varepsilon, eV). \quad (54)$$

For  $T=0$ ,  $\partial_{V\chi}=2e\delta(\varepsilon+eV)$  holds and since  $(1-\gamma\tilde{\gamma}^{R,A})=0$  for  $\varepsilon=0$  we also find  $G(eV=0)=0$ . Note that Eq. (53) holds for arbitrary scattering matrices. Thus, this property is universal with the exception of  $\vartheta=\pi$ ,  $\alpha_{\gamma}=0.5\pi$  where the denominator is zero for  $\varepsilon=0$ .

### B. Andreev conductance spectra

As we have pointed out above, two competing Andreev processes participate in the presence of spin-flip scattering, shown in Fig. 11. Normal AR is suppressed as the polarization of the FM increases since it requires one quasiparticle from each spin band. SAR on the other hand takes two quasiparticles from the same band and thus dominates the spectrum for high polarization. We can define the corresponding contributions to the differential conductance for each spin band by

$$\begin{aligned} \frac{G_{AR,2}}{2} &= \partial_V \frac{eN_{F2}}{2} \int_{\varepsilon} d\varepsilon \langle \Gamma_{2\leftarrow 3}^R \tilde{x}_3 \tilde{\Gamma}_{3\rightarrow 2}^A \rangle_+, \\ \frac{G_{SAR,2}}{2} &= \partial_V \frac{eN_{F2}}{2} \int_{\varepsilon} d\varepsilon \langle \Gamma_{2\leftarrow 2}^R \tilde{x}_2 \tilde{\Gamma}_{2\rightarrow 2}^A \rangle_+ \end{aligned} \quad (55)$$

and correspondingly ( $2\leftrightarrow 3$ ) for band 3. The factor 1/2 appears because the expressions in the integrand describe only one of the two charges which are transferred by the process. The other charge is contained in  $X_{\eta}-x_{\eta}$  in Eq. (44) and cannot be disentangled from the one-quasiparticle transmission

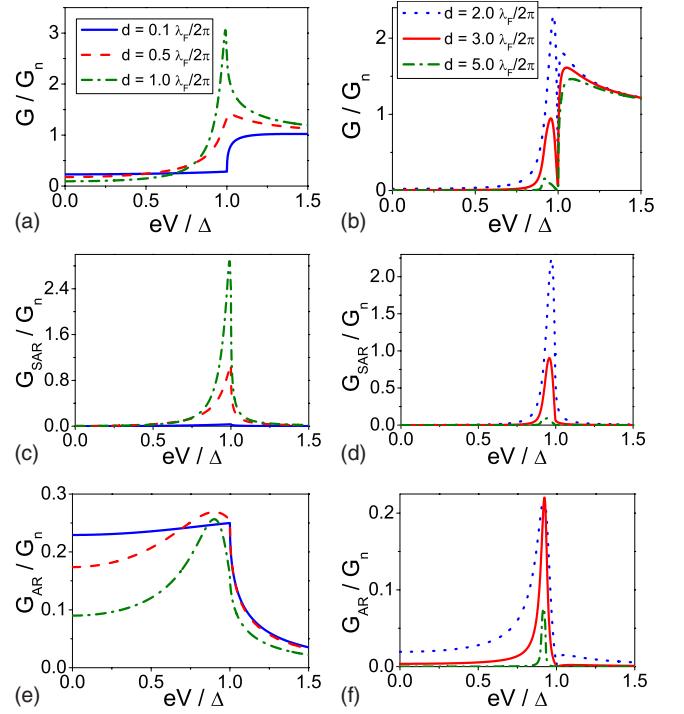


FIG. 13. (Color online) The conductance  $G$  of an S/F point contact as function of contact voltage  $V$  (first row), and the corresponding SAR (second row) and AR (third row) contributions to it, for  $d=0.1, 0.5$ , and  $1.0\lambda_F/2\pi$  (left column) and  $d=2.0, 3.0$ , and  $5.0\lambda_F/2\pi$  (right column). The remaining parameters are  $E_2=0.1E_F$ ,  $E_3=0.9E_F$ ,  $U_+=1.1E_F$ ,  $U_-=1.9E_F$ , and  $\alpha=0.5\pi$ .

processes. The total contribution to the conductance is given by the sum over both bands:  $G_{AR}=G_{AR,2}+G_{AR,3}$  and  $G_{SAR}=G_{SAR,2}+G_{SAR,3}$ .

In Fig. 13 we discuss the results for the box potential using exactly the same parameters as in Fig. 4. This corresponds to a spin polarization of the FM of  $P=0.5$ . In Figs. 13(a) and 13(b) we plot the total differential conductance. For thin interfaces we obtain spectra with a rather conventional shape. The solid line in Fig. 13(a) corresponds to a highly transparent interface but still the conductance does not rise to a value close to twice the normal-state conductance as in the conventional BTK picture. This is a direct result of the FM spin polarization. Looking at the same line in Figs. 13(c) and 13(e), we see that the shape of  $G_{AR}$  actually follows the usual trend, albeit with reduced magnitude, while  $G_{SAR}$  gives almost no contribution in this case. The reduction of the Andreev conductance compared to the normal state conductance is in this case due to the spin polarization of the FM. Only a fraction of the quasiparticles impinging the interface can undergo AR due to the reduced density of states in the minority band.

As the thickness of the interface increases the conductance contribution of SAR is enhanced and even dominates the subgap conductance for tunneling interfaces [Figs. 13(d) and 13(f)]. This is because the magnitude of SAR is insensitive to the spin polarization, as it takes two quasiparticles with the same spin from the FM. On the other hand it is very sensitive to spin-active scattering, which is why it is reduced for thin interfaces. We also see that as the transparency of the

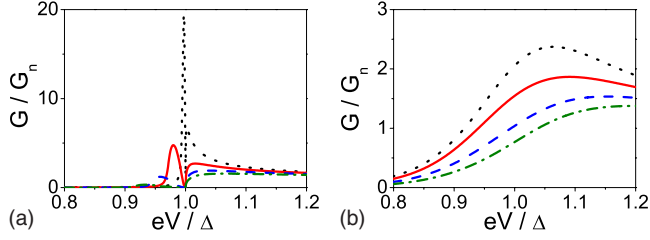


FIG. 14. (Color online) The conductance  $G$  of an SC/FM point contact as function of contact voltage  $V$ , for (a)  $T=0$  and (b)  $T=0.1 T_c$ . In both cases, the values of  $E_3=0.2, \dots, 0.9$  and  $U_- = E_- + E_F$  are increasing in steps of  $0.1E_F$  from top to bottom. The remaining parameters are  $E_2=0.1E_F$ ,  $U_+=1.1E_F$ ,  $\alpha=0.5\pi$ , and  $d=5.0\lambda_F/2\pi$ .

interface decreases, a subgap peak develops, as discussed in the previous section [Fig. 13(b)]. However, the Andreev bound state stays close to the gap edge in this scenario and smears out even for very small temperatures.

In Figs. 14(a) and 14(b) we plot the spectrum around the gap energy for different polarizations, i.e., exchange fields, of the FM and a tunneling interface  $d=5.0\lambda_F/2\pi$ . Apparently, the subgap peak moves to lower energies as the exchange field increases but also decreases in magnitude. In any case, the peak is too small and too close to the gap edge to be observable at finite temperatures [Fig. 14(b)]. This situation cannot be circumvented in the frame of the box-potential model, the reason being that one cannot obtain high mixing angles for reasonable parameter ranges. Moreover, this situation is aggravated by the Fermi-surface average. As the mixing angle varies with the trajectory impact angle, the peak is broadened even at  $T=0$ . This points again to the crucial importance of the Fermi-surface geometry. If the Fermi vector in the SC is considerably smaller than those of the FM bands, the scattering states which contribute to the current will be confined to a small range around perpendicular impact and hence a sharper peak structure can be expected.

Finally, we show that even if this exotic feature in the conductance spectrum is not observable at finite temperatures, the impact of spin-active scattering can still be important. This holds, in particular, for FMs with high polarization, where SAR will naturally dominate the spectrum, if it is present. This can be seen in Fig. 15, where we plot the conductance for a highly polarized ( $P=0.8$ ) FM for  $\alpha=0.5\pi$  and  $\alpha=0$ , respectively. In the latter case, SAR cannot occur.

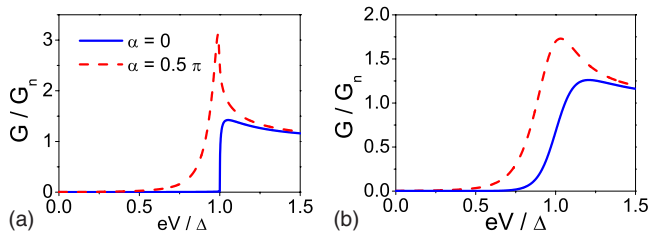


FIG. 15. (Color online) The conductance  $G$  of a point contact as function of contact voltage  $V$ , for (a)  $T=0$  and (b)  $T=0.1 T_c$ , shown for two values of  $\alpha$ . The remaining parameters in all plots are  $E_2=0.1E_F$ ,  $E_3=0.99E_F$ ,  $U_+=1.1E_F$ ,  $U_-=1.99E_F$ , and  $d=1.0\lambda_F/2\pi$ .

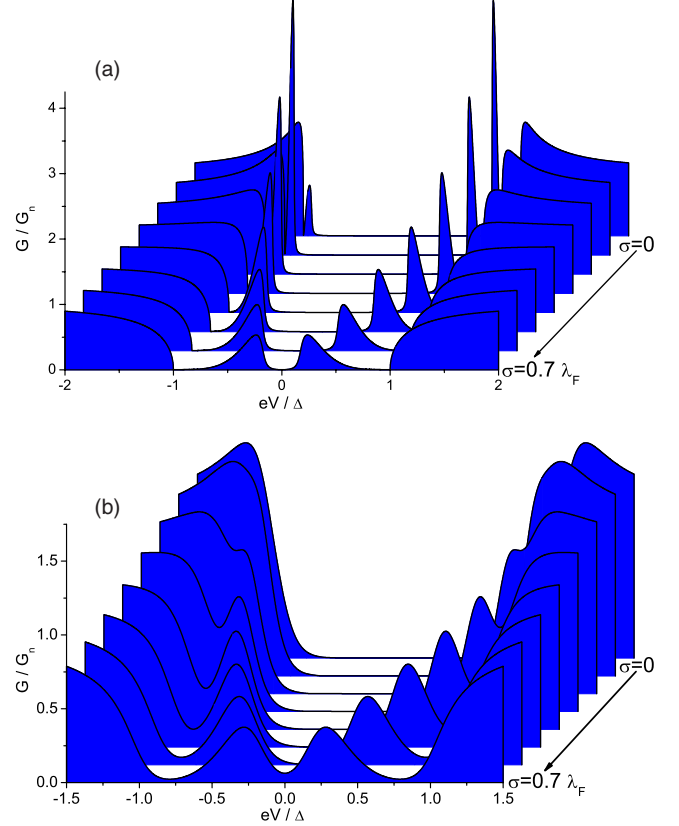


FIG. 16. (Color online) The differential conductance for the smooth potential model. The parameters are the same as in Fig. 10. The interface smoothness parameter  $\sigma$  increases from back to front by steps of  $0.1\lambda_F$ . Temperatures are  $T=0$  (top) and  $T=0.1T_c$  (bottom).

$\alpha=0.5\pi$ , the spectrum is largely enhanced around the gap energy. This is not surprising since SAR is mainly contributing in this energy range. Even at finite temperatures an appreciable difference between the curves remains.

Turning to the smooth scattering potential, we see that the situation changes fundamentally. We calculate the spectrum for the same set of parameters as in Fig. 10. These results are shown in Fig. 16. As we find a considerably enhanced mixing angle in this case, it is not surprising that the subgap peak is located far from the gap edge if the potential is sufficiently smooth and may even be observed at finite temperatures. The width of this peak is directly related to the Fermi-surface average. The calculations in Fig. 16 are for a tunneling limit situation ( $t^2 < 0.01$ ) and formula (52) holds approximately. As one can see from Fig. 10(b),  $\vartheta$  sweeps through the whole range from 0 to its maximum value as a function of the trajectory impact angle. This results in broadening and also implies that the Fermi-surface geometry may have an important impact on the shape of this bound-state peak. For the particular geometry we consider here, with the Fermi surfaces of the FM bands being both smaller than that of the SC, the mixing angle reaches 0 for grazing impact. If however, the SC band is smaller than at least one of the FM bands, this is no longer true as it can be seen in Fig. 4. Doing WKB calculations for different geometries, we found that this may result in a kink at the tail of the peak, if  $\vartheta_{\min}$  is large enough.

### C. Connection to the extended BTK model

The extension of the BTK model to ferromagnetic point contacts proposed in Ref. 36 and further elaborated in Ref. 37, was first used in Refs. 38 and 39 to extract the FM spin polarization from the spectra of such contacts. Here, we show how this model can be obtained from our theory. The extended BTK model characterizes interfacial scattering by a single parameter  $Z$ , which controls the transparency of the interface.  $Z$  is assumed to be independent of the transport channel. The spin polarization of the FM is then taken into account by noting that if  $P$  is finite, the transport channels can be divided into “nonmagnetic” and “half-metallic” channels,<sup>37,39</sup> which is illustrated in Fig. 1 in this paper. This amounts to writing the conductance of the contact as a sum of the nonmagnetic and half-metallic contribution according to<sup>39</sup>

$$G = (1 - P_C)G_N + P_C G_H. \quad (56)$$

Here, the *transport* spin polarization  $P_C$  was introduced

$$P_C = \frac{N_{F2}v_{F2} - N_{F3}v_{F3}}{N_{F2}v_{F2} + N_{F3}v_{F3}}. \quad (57)$$

$G_H$  is zero below the gap since spin-flip scattering cannot occur in this model. This means that for  $|eV| < \Delta$  one simply has the standard BTK formula reduced by a factor  $(1 - P_C)$ . The connection to our model is now established by making corresponding assumptions for the normal-state scattering matrix of the interface. Since there is no spin-flip scattering, the matrix is necessarily diagonal, spin-mixing effects are obviously also disregarded. Moreover, the fact that wave vector mismatches, let alone a spin-dependent interface potential, will introduce a spin-filtering effect is also not taken into account. Consequently, the whole scattering matrix is described by a single-transmission parameter  $T_N = t_2^2 = t_3^2$ . Evaluating the corresponding expressions for  $\Gamma_\eta^{R,A}$  is straight forward and yields

$$j_\varepsilon(\varepsilon, V, \vec{p}_\eta) = X_\eta - x_\eta - \Gamma_\eta^R x_\eta \tilde{\Gamma}_\eta^A = -\frac{2T_N^2 \tilde{x}_\eta(\varepsilon, eV) \Theta(p_{F3} - |p_\parallel|)}{1 + R_N^2 - \frac{2R_N}{\Delta^2} (2\varepsilon^2 - \Delta^2)}, \quad \varepsilon < \Delta \quad (58)$$

with  $R_N = 1 - T_N$ , and  $\Theta(p_{F3} - |p_\parallel|)$  is the kinematics constraint for trajectories to be nonmagnetic. The total current density is

$$\vec{j}(V) = -\sum_\eta \frac{eN_{F\eta}}{2} \int_\varepsilon d\varepsilon \langle \vec{v}_\eta j_\varepsilon \rangle_\eta, \quad (59)$$

where we sum over the contributions of both bands for which an FS average is calculated independently.

Writing the FS average explicitly, we get

$$\vec{j} = -\frac{e}{2} \int_\varepsilon d\varepsilon \left[ \int \frac{d^2 p'_{F2}}{(2\pi\hbar)^3} \frac{\vec{v}_{F2} j_\varepsilon(\vec{p}_{F2})}{|\vec{v}_{F2}(p'_{F2})|} + \int \frac{d^2 p'_{F3}}{(2\pi\hbar)^3} \frac{\vec{v}_{F3} j_\varepsilon(\vec{p}_{F3})}{|\vec{v}_{F3}(p'_{F3})|} \right]. \quad (60)$$

Note that

$$S_\eta = \int_{v_{F\eta, z} > 0} d^2 p'_{F\eta} \frac{\vec{v}_{F\eta}}{|\vec{v}_{F\eta}(p'_{F\eta})|} \cdot \vec{e}_z \quad (61)$$

is exactly the area of the projection of the Fermi surface onto the contact plane. Due to the kinematics constraint we have  $j(\vec{p}_{F2}) = j(\vec{p}_{F3}) = j(p_\parallel)$ , if the parallel momentum components of  $\vec{p}_{F2}$  and  $\vec{p}_{F3}$  are identical, and  $j(p_\parallel) = 0$  for  $p_\parallel > p_{F3}$ , which follows from Eq. (58). This together implies that both integrals give the same contribution to the current which is not surprising since Andreev reflection induces the same current contribution in both bands. In the extended BTK-model case the current density  $j$  is not a function of  $p_\parallel$ , as  $T_N$  is not trajectory dependent. Assuming spherical Fermi surfaces, we can hence calculate the FS average explicitly

$$\vec{j} = j \vec{e}_z = -\frac{e v_{F3} N_{F3}}{8} \int_\varepsilon d\varepsilon j_\varepsilon(\varepsilon, V) \vec{e}_z. \quad (62)$$

The conductance is then given by

$$G_N^{\text{quasi}}/G_{N,0} = A \partial_V j / G_{N,0} = \mathcal{T}_N, \quad (63)$$

where  $A$  is the contact area. Calculating  $\mathcal{T}_N = \int_\varepsilon d\varepsilon \partial_V j_\varepsilon(\varepsilon, V) / 2e$  at  $T=0$  yields the BTK formula<sup>51</sup> with  $T_N = 1/[1+Z^2]$  (note that we used  $\partial_V x = 2e \delta(\varepsilon + eV)$  at  $T=0$  at this point).  $G_{N,0} = (2e^2 A v_{F3} N_{F3}) / 8$  is the contribution to the normal-state conductance of the nonmagnetic trajectories. The corresponding term in Eq. (56) reads

$$(1 - P_C)G_N = \frac{2v_{F3} N_{F3}}{N_{F2}v_{F2} + N_{F3}v_{F3}} G_N. \quad (64)$$

To obtain the correct contribution to the normal-state conductance,  $G_N$  must be related to the BTK formula by  $G_N = [e^2 A (N_{F2}v_{F2} + N_{F3}v_{F3}) / 8] \mathcal{T}_N$ . Hence we have exactly  $G_N^{\text{quasi}} = (1 - P_C)G_N$ . Analogously we can derive  $G_N^{\text{quasi}}$  for  $|eV| > \Delta$  and recover the BTK result as well. We also obtain an expression for  $G_H$  for  $|eV| > \Delta$  from our model by assuming a scattering matrix with  $r_{1\uparrow} = r e^{i\vartheta/2}$ ,  $r_{1\downarrow} = e^{-i\vartheta/2}$  which implies  $T_3 = 0$  and  $T_2 = t_2^2 = T_H e^{i\vartheta/2}$

$$G_H / G_{H,0} = T_H = \frac{4T_H \beta}{2(\beta^2 + 1) - (\beta - 1)^2 T_H - 2 \cos \vartheta \sqrt{1 - T_H} (\beta^2 - 1)} \quad (65)$$

with  $\beta = eV / \sqrt{eV^2 - \Delta^2}$ . Comparison of this formula with that of Ref. 37 then shows that agreement requires

$$\cos \vartheta = Z \sqrt{\frac{1}{1+Z^2}} \left[ 1 - \frac{2(K/Z-1)}{(K-2Z)^2+1} \right] \quad (66)$$

with  $T_H=1/[1+Z^2]$  and  $K$  is a parameter introduced in Ref. 37 that we discuss in the following. For the sake of completeness, the corresponding contribution to the normal-state conductance is  $G_{H,0}=e^2A(N_{F_2}v_{F_2}-N_{F_3}v_{F_3})/8$ . Apparently, a spin-mixing phase is mandatory to reproduce the formula of Mazin *et al.* This result is not surprising since the model used in Ref. 37 to calculate  $G_H$  necessarily introduces a spin-mixing effect, which is not true for the standard BTK model. The reason for this is that BTK assumes the same wave vectors in all channels and a nonspin-active interface. On the other hand Mazin *et al.* introduce different wave vectors by assuming an evanescent mode in the minority band. This leads to the appearance of the quantity  $K=\kappa/k$  in their formula, where  $\kappa$  controls the attenuation of the evanescent mode ( $e^{-\kappa z}$ ) and  $k$  is the component normal to the interface of the wave vector in the propagating channel. From our point of view this is nothing but a manifestation of a spin-mixing phase, which is why we can only reach agreement by taking that into account. To make this point more convincing, we derived Eq. (66) from an explicit calculation of the normal state  $S$  matrix using the same model as Ref. 37. We match plane waves with wave vector  $\vec{k}$  in all propagating channels and the same  $\kappa$  as above for the evanescent mode of the minority band in the FM. The interface is modeled by a spin-independent delta function with a weight factor. This yields the reflection eigenvalues of the  $S$  matrix on the SC side  $r_{1\uparrow}, r_{1\downarrow}$ . By definition we have  $\vartheta=\arg[r_{1\uparrow}r_{1\downarrow}^*]$  and find exactly Eq. (66). In conclusion, we have shown here that earlier models for Andreev reflection in clean ferromagnetic heterostructures are contained as limiting cases in our theory. As already noted in Ref. 37, the formula for  $G_H$  used by Soulen *et al.*<sup>39</sup> was not obtained from a rigorous calculation and is discontinuous at the gap energy.

## V. CONCLUSIONS

In summary, we have used an extension of the quasiclassical theory of superconductivity to strongly spin-polarized ferromagnets to study the conductance of SC/FM point contacts with a spin-active interface. We describe the interface by a microscopic model that extends earlier models used in the description of Andreev reflection in such structures. Our main results are: (i) two types of Andreev reflection arise, one of them being related to the creation of equal-spin triplet correlation. These processes depend differently on various properties of the interface and bulk materials involved. (ii) the shape of the scattering potential has a pivotal impact in the magnitude of the spin-mixing effect. The usually assumed boxlike or delta-functionlike potential generically implies small mixing angles. (iii) we find spin-polarized Andreev bound state peaks in the conductance of a point contact with a strong ferromagnet that are more prominent for smooth interface potentials or a finite magnetization near the interface in the superconductor. The latter effect could be, e.g., caused by the inverse proximity effect. Lastly, we would like to stress that the feature  $G(eV=0)=0$  for  $T=0$ , which is

universal for the spectra of half-metallic point contacts, may point to a criterion for identifying SAR in experiment at sufficiently low temperatures.

## ACKNOWLEDGMENTS

We would like to thank W. Belzig, M. Fogelström, and G. Schön for fruitful discussions, as well as D. Beckmann and F. Hübner for sharing their experimental results with us. In particular, we acknowledge helpful correspondence with I. I. Mazin.

## APPENDIX: SCATTERING-MATRIX PARAMETERS

The general boundary conditions for the scattering problem in the quasiclassical theory of superconductivity have been derived in Ref. 16. These boundary conditions are formulated in terms of the normal-state scattering matrix of the scattering region which has to be assumed, calculated from a microscopic model or fitted to experiment. In the case of a spin-active interface between a normal metal and a ferromagnet this matrix is a unitary  $4 \times 4$  matrix and one may ask for a set of parameters that describes the most general matrix uniquely and still allows for an interpretation of these parameters with respect to the physical problem in question.

### 1. Singular-value decomposition

Using a partial singular value decomposition (SVD) and the spectral theorem one can arrive at a decomposition of  $S$  that provides an appealing set of parameters. By partial we mean that a SVD is calculated for each block and not for the whole matrix, i.e., we have at the outset

$$S = \begin{pmatrix} URV^\dagger & WT\tilde{Z}^\dagger \\ \tilde{W}\tilde{T}Z^\dagger & -\tilde{U}\tilde{R}\tilde{V}^\dagger \end{pmatrix}. \quad (A1)$$

$U, V, W, \tilde{Z}, \tilde{W}, Z, \tilde{U}$ , and  $\tilde{V}$  are unitary and independent  $2 \times 2$  matrices while  $R, T, \tilde{T}$ , and  $\tilde{R}$  are diagonal and contain the corresponding singular values. Such a decomposition is possible for any  $4 \times 4$  matrix, which means that we did not exploit the unitarity of  $S$  so far. Exploiting unitarity we arrive at

$$S = \begin{pmatrix} U & 0 \\ 0 & \tilde{U} \end{pmatrix} \begin{pmatrix} R & T \\ T & -R \end{pmatrix} \begin{pmatrix} V^\dagger & 0 \\ 0 & \tilde{V}^\dagger \end{pmatrix}. \quad (A2)$$

$U, \tilde{U}, V$ , and  $\tilde{V}$  are again unitary and independent.  $R$  and  $T$  contain the singular values of the composition and unitarity dictates  $RR^\dagger + TT^\dagger = 1$ . To obtain a decomposition which allows for a clear-cut interpretation in terms of scattering phases and spin rotations, one has to continue decomposing  $U, \tilde{U}, V$ , and  $\tilde{V}$  and eventually arrives at

$$S = \begin{pmatrix} Q & 0 \\ 0 & \tilde{Q} \end{pmatrix} \begin{pmatrix} \Phi^{1/2} & 0 \\ 0 & \tilde{\Phi}^{1/2} \end{pmatrix} \begin{pmatrix} Y & 0 \\ 0 & \tilde{Y} \end{pmatrix} \begin{pmatrix} \sqrt{1-TT} & \Psi T \\ \Psi^\dagger T & -\sqrt{1-TT} \end{pmatrix} \\ \times \begin{pmatrix} Y^\dagger & 0 \\ 0 & \tilde{Y}^\dagger \end{pmatrix} \begin{pmatrix} \Phi^{1/2} & 0 \\ 0 & \tilde{\Phi}^{1/2} \end{pmatrix} \begin{pmatrix} Q^\dagger & 0 \\ 0 & \tilde{Q}^\dagger \end{pmatrix}. \quad (A3)$$

This decomposition is written in terms of  $2 \times 2$  blocks which

are related to reflection and transmission, these blocks are matrices in spin space. The central matrix contains the singular values of the partial singular-value decomposition. These singular values relate to the transmission and reflection amplitudes of the interface but not in a simple way since the outer matrices contain several rotations in spin space. The outer matrices come in two flavors. The matrices  $Q$ ,  $\tilde{Q}$ ,  $Y$ , and  $\tilde{Y}$  can be regarded as rotations of the quantization axis on either the left ( $Q, Y$ ) or right ( $\tilde{Q}, \tilde{Y}$ ) side of the interface. They have the structure

$$\text{rot}(\alpha, \varphi) \equiv \begin{bmatrix} \cos(\alpha/2) & \sin(\alpha/2)e^{i\varphi} \\ -\sin(\alpha/2)e^{-i\varphi} & \cos(\alpha/2) \end{bmatrix}. \quad (\text{A4})$$

The matrices  $\Phi^{1/2}$ ,  $\tilde{\Phi}^{1/2}$ , and  $\Psi^{1/2}$  are diagonal and contain complex phases [ $\Psi = (\Psi^{1/2})^2$ ]. Their structure is

$$\text{phase}(\eta, \vartheta) \equiv e^{i\eta} e^{i\sigma_z \vartheta/2}. \quad (\text{A5})$$

Apparently  $\eta$  is a global phase and  $\vartheta$  a relative phase. The decomposition as it is presented here has 16 free parameters which agrees with the maximum number of free parameters a unitary  $4 \times 4$  matrix can have. However, we can now identify parameters which will be irrelevant for our problem. First we use the freedom of choosing an arbitrary quantization axis in the SC and put  $Q=1$ . Second, we note that if the quantization axis of the interface does not rotate in the  $x$ - $y$  plane, we have  $S=S^T$  and none of the rotation matrices defined above rotates in that plane. This implies  $Y^\dagger=Y^T$ ,  $\tilde{Y}^\dagger=\tilde{Y}^T$ , and  $\tilde{Q}^\dagger=Q^T$  and also that  $\Psi$  is real. We may hence absorb  $\Psi$  into  $T$  which amounts to having transmission eigenvalues that can be negative. The transport properties, i.e., the current in this case, should also not depend on whether we extend the interface region arbitrarily far into the asymptotic region. This corresponds to the following transformation of the  $S$  matrix:

$$S' = \eta S \eta \quad (\text{A6})$$

with

$$\eta = \begin{pmatrix} e^{i\eta_1} & 0 \\ 0 & e^{i(\eta_2 + \eta_3 + (\eta_2 - \eta_3)\sigma_z)/2} \end{pmatrix}. \quad (\text{A7})$$

Inspection of the boundary conditions shows in fact that both  $X_\eta$  and  $\Gamma_\eta^{\text{R,A}}$  are invariant under this transformation. Considering this as another gauge transformation, one can eliminate the global phase in  $\Phi$  and use  $\eta_2$ ,  $\eta_3$  to obtain exactly the structure of Eq. (32) in the transmission blocks. The reflection part on the SC side reads

$$\Phi^{1/2} Y R Y^\dagger \Phi^{1/2} \quad (\text{A8})$$

from which we conclude that the relative phase  $\vartheta_\Phi$  is what is usually referred to as the spin-mixing angle

$$\vartheta = \vartheta_\Phi. \quad (\text{A9})$$

This is also the quantity which we plot in Figs. 4 and 10. The necessity to have two additional mixing phases  $\vartheta_2$  and  $\vartheta_3$  comes about due to the additional rotations  $\tilde{Q}$  and  $\tilde{Y}$ . They are a function of all parameters which enter the transmission part. Thus a simple relation such as Eq. (A9) does not exist in this case.

The angle  $\alpha_Y$  of which we make extensive use in the analytical discussion is associated to  $Y$  by  $Y = \text{rot}(\alpha_Y, 0)$ . In fact, the relations stated in Eq. (34) are given by  $Y R Y^\dagger$ . A fully analogous argumentation can be developed for the half-metallic case, however the corresponding scattering matrix is  $3 \times 3$  and thus all tilde quantities are scalar, making them irrelevant. Furthermore, one can show that the  $\Psi$  matrix is also just a scalar phase in this case and hence  $\Phi^{1/2}$  fully accounts for the spin-mixing effect. So we have in the half-metallic case

$$\vartheta = \vartheta_\Phi \quad \vartheta_2 = \vartheta_\Phi/2. \quad (\text{A10})$$

This relation between  $\vartheta_\Phi$  and  $\vartheta_2$  is due to the fact that the evanescent solution in the ferromagnet is completely absorbed in the scattering matrix.

## 2. Box potential

For the special case of a box-shaped potential we obtain analytical solutions for the scattering matrix, assuming for the normal metal (superconductor in its normal state) a wave function of the form

$$\Psi_N = \frac{e^{i\vec{k}_\parallel \vec{r}_\parallel}}{\sqrt{v_1}} \left[ \begin{pmatrix} s_{1+} \\ s_{1-} \end{pmatrix} e^{ik_1 z} + \begin{pmatrix} A_{1+} \\ A_{1-} \end{pmatrix} e^{-ik_1 z} \right] \quad (\text{A11})$$

with  $|\vec{k}_\parallel|^2 + k_1^2 = 2mE_F/\hbar^2$  and in the barrier region

$$\Psi_B = e^{i\vec{k}_\parallel \vec{r}_\parallel} \mathcal{U}(\alpha)^\dagger \begin{pmatrix} B_+ e^{\kappa_+ z} + C_+ e^{-\kappa_+ z} \\ B_- e^{\kappa_- z} + C_- e^{-\kappa_- z} \end{pmatrix} \quad (\text{A12})$$

with  $|\vec{k}_\parallel|^2 - \kappa_\pm^2 = -2m(U_\pm - E_F)/\hbar^2$  and with a certain spin rotation matrix  $\mathcal{U}(\alpha)$  that represents the misalignment of the barrier magnetic moment with the magnetization direction in the ferromagnet by a misalignment angle  $\alpha$ . The indices  $\pm$  refer to spin-up and spin-down with respect to the misaligned spin-quantization axis in the barrier. In the ferromagnet we can have, depending on the value of  $\vec{k}_\parallel$ , propagating or evanescent solutions in either of the two spin bands. In the case of two propagating solutions they are

$$\Psi_F = e^{i\vec{k}_\parallel \vec{r}_\parallel} \left[ \begin{pmatrix} \frac{s_2}{\sqrt{v_2}} e^{-ik_2(z-a)} \\ \frac{s_3}{\sqrt{v_3}} e^{-ik_3(z-a)} \end{pmatrix} + \begin{pmatrix} \frac{A_2}{\sqrt{v_2}} e^{ik_2(z-a)} \\ \frac{A_3}{\sqrt{v_3}} e^{ik_3(z-a)} \end{pmatrix} \right], \quad (\text{A13})$$

where  $|\vec{k}_\parallel|^2 + k_2^2 = 2m(E_F - E_2)/\hbar^2$  and  $|\vec{k}_\parallel|^2 + k_3^2 = 2m(E_F - E_3)/\hbar^2$  (in a more general model the masses on the two sides of the interface could differ; we assumed them identical for definiteness). In the case of one propagating and one evanescent solution

$$\Psi_F = e^{i\vec{k}_\parallel \vec{r}_\parallel} \left[ \begin{pmatrix} \frac{s_2}{\sqrt{v_2}} e^{-ik_2(z-a)} \\ 0 \end{pmatrix} + \begin{pmatrix} \frac{A_2}{\sqrt{v_2}} e^{ik_2(z-a)} \\ D_3 e^{-\kappa_3(z-a)} \end{pmatrix} \right], \quad (\text{A14})$$

where  $|\vec{k}_\parallel|^2 + k_2^2 = 2m(E_F - E_2)/\hbar^2$  and  $|\vec{k}_\parallel|^2 - \kappa_3^2 = 2m(E_F - E_3)/\hbar^2$ , and in the case of two evanescent solutions

$$\Psi_F = e^{i\vec{k}_\parallel \vec{r}_\parallel} \begin{pmatrix} D_2 e^{-\kappa_2(z-a)} \\ D_3 e^{-\kappa_3(z-a)} \end{pmatrix}, \quad (\text{A15})$$

where  $|\vec{k}_\parallel|^2 - \kappa_2^2 = 2m(E_F - E_2)/\hbar^2$  and  $|\vec{k}_\parallel|^2 - \kappa_3^2 = 2m(E_F - E_3)/\hbar^2$ . We then match the wave functions and their derivatives at  $z=0$  ( $\Psi_N$  and  $\Psi_B$ ) and at  $z=a$  ( $\Psi_B$  and  $\Psi_F$ ), and eliminate the components  $D_2$  and  $D_3$ . The scattering matrix then is defined as the coefficient matrix in the relations

$$\begin{pmatrix} A_{1+} \\ A_{1-} \\ A_2 \\ A_3 \end{pmatrix} = S \begin{pmatrix} s_{1+} \\ s_{1-} \\ s_2 \\ s_3 \end{pmatrix} \quad (\text{A16})$$

for the case of two propagating solutions in the ferromagnet,

$$\begin{pmatrix} A_{1+} \\ A_{1-} \\ A_2 \end{pmatrix} = S \begin{pmatrix} s_{1+} \\ s_{1-} \\ s_2 \end{pmatrix} \quad (\text{A17})$$

for the case of one propagating and one evanescent solution, and

$$\begin{pmatrix} A_{1+} \\ A_{1-} \end{pmatrix} = S \begin{pmatrix} s_{1+} \\ s_{1-} \end{pmatrix} \quad (\text{A18})$$

for the case of two evanescent solutions in the ferromagnet.

- 
- <sup>1</sup>F. S. Bergeret, A. F. Volkov, and K. B. Efetov, *Rev. Mod. Phys.* **77**, 1321 (2005).  
<sup>2</sup>A. I. Buzdin, *Rev. Mod. Phys.* **77**, 935 (2005).  
<sup>3</sup>M. Eschrig and T. Löfwander, *Nat. Phys.* **4**, 138 (2008).  
<sup>4</sup>M. Cuoco, A. Romano, C. Noce, and P. Gentile, *Phys. Rev. B* **78**, 054503 (2008).  
<sup>5</sup>A. V. Galaktionov, M. S. Kalenkov, and A. D. Zaikin, *Phys. Rev. B* **77**, 094520 (2008).  
<sup>6</sup>K. Halterman, O. T. Valls, and P. H. Barsic, *Phys. Rev. B* **77**, 174511 (2008).  
<sup>7</sup>A. F. Volkov and K. B. Efetov, *Phys. Rev. B* **78**, 024519 (2008).  
<sup>8</sup>P. M. R. Brydon, B. Kastening, D. K. Morr, and D. Manske, *Phys. Rev. B* **77**, 104504 (2008).  
<sup>9</sup>E. Zhao and J. A. Sauls, *Phys. Rev. B* **78**, 174511 (2008).  
<sup>10</sup>J. Linder, T. Yokoyama, A. Sudbø, and M. Eschrig, *Phys. Rev. Lett.* **102**, 107008 (2009).  
<sup>11</sup>R. Grein, M. Eschrig, G. Metalidis, and G. Schön, *Phys. Rev. Lett.* **102**, 227005 (2009).  
<sup>12</sup>P. M. R. Brydon and D. Manske, *Phys. Rev. Lett.* **103**, 147001 (2009).  
<sup>13</sup>M. S. Kalenkov, A. V. Galaktionov, and A. D. Zaikin, *Phys. Rev. B* **79**, 014521 (2009).  
<sup>14</sup>B. Béni, J. N. Kupferschmidt, C. W. J. Beenakker, and P. W. Brouwer, *Phys. Rev. B* **79**, 024517 (2009).  
<sup>15</sup>P. H. Barsic and O. T. Valls, *Phys. Rev. B* **79**, 014502 (2009).  
<sup>16</sup>M. Eschrig, *Phys. Rev. B* **80**, 134511 (2009).  
<sup>17</sup>M. Eschrig, T. Löfwander, T. Champel, J. C. Cuevas, J. Kopu, and G. Schön, *J. Low Temp. Phys.* **147**, 457 (2007).  
<sup>18</sup>Y. Tanaka and A. A. Golubov, *Phys. Rev. Lett.* **98**, 037003 (2007).  
<sup>19</sup>M. Eschrig, J. Kopu, J. C. Cuevas, and G. Schön, *Phys. Rev. Lett.* **90**, 137003 (2003).  
<sup>20</sup>A. F. Volkov, F. S. Bergeret, and K. B. Efetov, *Phys. Rev. Lett.* **90**, 117006 (2003).  
<sup>21</sup>J. Kopu, M. Eschrig, J. C. Cuevas, and M. Fogelström, *Phys. Rev. B* **69**, 094501 (2004).  
<sup>22</sup>M. Eschrig, J. Kopu, A. Konstandin, J. C. Cuevas, M. Fogelström, and G. Schön, *Adv. Solid State Phys.* **44**, 533 (2004).  
<sup>23</sup>R. S. Keizer, S. T. B. Goennenwein, T. M. Klapwijk, G. Miao, G. Xiao, and A. Gupta, *Nature (London)* **439**, 825 (2006).  
<sup>24</sup>V. Braude and Y. V. Nazarov, *Phys. Rev. Lett.* **98**, 077003 (2007).  
<sup>25</sup>Y. Asano, Y. Tanaka, and A. A. Golubov, *Phys. Rev. Lett.* **98**, 107002 (2007); Y. Asano, Y. Sawa, Y. Tanaka, and A. A. Golubov, *Phys. Rev. B* **76**, 224525 (2007).  
<sup>26</sup>J. Linder and A. Sudbø, *Phys. Rev. B* **75**, 134509 (2007).  
<sup>27</sup>J. Linder and A. Sudbø, *Phys. Rev. B* **76**, 064524 (2007).  
<sup>28</sup>S. Takahashi, S. Hikino, M. Mori, J. Martinek, and S. Maekawa, *Phys. Rev. Lett.* **99**, 057003 (2007).  
<sup>29</sup>T. Löfwander, Th. Champel, J. Durst, and M. Eschrig, *Phys. Rev. Lett.* **95**, 187003 (2005); T. Löfwander, Th. Champel, and M. Eschrig, *Phys. Rev. B* **75**, 014512 (2007).  
<sup>30</sup>Z. Pajović, M. Božović, Z. Radović, J. Cayssol, and A. Buzdin, *Phys. Rev. B* **74**, 184509 (2006).  
<sup>31</sup>T. Champel, T. Löfwander, and M. Eschrig, *Phys. Rev. Lett.* **100**, 077003 (2008).  
<sup>32</sup>M. Houzet and A. I. Buzdin, *Phys. Rev. B* **76**, 060504 (2007).  
<sup>33</sup>K. Halterman, P. H. Barsic, and O. T. Valls, *Phys. Rev. Lett.* **99**, 127002 (2007).  
<sup>34</sup>A. Cottet and W. Belzig, *Phys. Rev. B* **77**, 064517 (2008).  
<sup>35</sup>A. Cottet, B. Douçot, and W. Belzig, *Phys. Rev. Lett.* **101**, 257001 (2008).  
<sup>36</sup>M. J. M. de Jong and C. W. J. Beenakker, *Phys. Rev. Lett.* **74**, 1657 (1995).  
<sup>37</sup>I. I. Mazin, A. A. Golubov, and B. Nadgorny, *J. Appl. Phys.* **89**, 7576 (2001). Unfortunately, the general formula for  $G_H$  contains a typo in the published version of this paper (private communication from I. I. Mazin). The formula for  $\kappa \rightarrow \infty$  is correct.  
<sup>38</sup>S. K. Upadhyay, A. Palanisami, R. N. Louie, and R. A. Buhrman, *Phys. Rev. Lett.* **81**, 3247 (1998).  
<sup>39</sup>R. J. Soulen, Jr., J. M. Byers, M. S. Osofsky, B. Nadgorny, T. Ambrose, S. F. Cheng, P. R. Broussard, C. T. Tanaka, J. Nowak, J. S. Moodera, A. Barry, and J. M. D. Coey, *Science* **282**, 85 (1998).  
<sup>40</sup>W. J. DeSisto, P. R. Broussard, T. F. Ambrose, B. E. Nadgorny, and M. S. Osofsky, *Appl. Phys. Lett.* **76**, 3789 (2000).  
<sup>41</sup>Y. Ji, G. J. Strijkers, F. Y. Yang, C. L. Chien, J. M. Byers, A. Anguelouch, G. Xiao, and A. Gupta, *Phys. Rev. Lett.* **86**, 5585 (2001).  
<sup>42</sup>A. Anguelouch, A. Gupta, Gang Xiao, D. W. Abraham, Y. Ji, S.



- Ingvansson, and C. L. Chien, Phys. Rev. B **64**, 180408(R) (2001).
- <sup>43</sup>J. S. Parker, S. M. Watts, P. G. Ivanov, and P. Xiong, Phys. Rev. Lett. **88**, 196601 (2002).
- <sup>44</sup>G. T. Woods, R. J. Soulen, Jr., I. I. Mazin, B. Nadgorny, M. S. Osofsky, J. Sanders, H. Srikanth, W. F. Egelhoff, and R. Datla, Phys. Rev. B **70**, 054416 (2004).
- <sup>45</sup>F. Pérez-Willard, J. C. Cuevas, C. Sürgers, P. Pfundstein, J. Kopu, M. Eschrig, and H. v. Löhneysen, Phys. Rev. B **69**, 140502(R) (2004).
- <sup>46</sup>A. I. D'yachenko, V. N. Krivoruchko, and V. Yu. Tarenkov, Low Temp. Phys. **32**, 824 (2006).
- <sup>47</sup>K. A. Yates, W. R. Branford, F. Magnus, Y. Miyoshi, B. Morris, L. F. Cohen, P. M. Sousa, O. Conde, and A. J. Silvestre, Appl. Phys. Lett. **91**, 172504 (2007).
- <sup>48</sup>V. N. Krivoruchko and V. Yu. Tarenkov, Phys. Rev. B **75**, 214508 (2007); **78**, 054522 (2008).
- <sup>49</sup>L. Bocklage, J. M. Scholtyssek, U. Merkt, and G. Meier, J. Appl. Phys. **101**, 09J512 (2007).
- <sup>50</sup>K. Xia, P. J. Kelly, G. E. W. Bauer, and I. Turek, Phys. Rev. Lett. **89**, 166603 (2002).
- <sup>51</sup>G. E. Blonder, M. Tinkham, and T. M. Klapwijk, Phys. Rev. B **25**, 4515 (1982).
- <sup>52</sup>R. Meservey and P. M. Tedrow, Phys. Rep. **238**, 173 (1994).
- <sup>53</sup>T. Tokuyasu, J. A. Sauls, and D. Rainer, Phys. Rev. B **38**, 8823 (1988).
- <sup>54</sup>M. Fogelström, Phys. Rev. B **62**, 11812 (2000).
- <sup>55</sup>D. Huertas-Hernando, Yu. V. Nazarov, and W. Belzig, Phys. Rev. Lett. **88**, 047003 (2002).
- <sup>56</sup>A. Cottet and W. Belzig, Phys. Rev. B **72**, 180503(R) (2005).
- <sup>57</sup>I. V. Bobkova and A. M. Bobkov, Phys. Rev. B **76**, 094517 (2007).
- <sup>58</sup>M. S. Kalenkov and A. D. Zaikin, Phys. Rev. B **76**, 224506 (2007).
- <sup>59</sup>D. Saint-James, J. Phys. (Paris) **25**, 899 (1964).
- <sup>60</sup>G. Deutscher, Rev. Mod. Phys. **77**, 109 (2005).
- <sup>61</sup>A. I. Larkin and Y. N. Ovchinnikov, Zh. Eksp. Teor. Fiz. **55**, 2262 (1968) [Sov. Phys. JETP **28**, 1200 (1969)].
- <sup>62</sup>G. Eilenberger, Z. Phys. **214**, 195 (1968).
- <sup>63</sup>J. W. Serene and D. Rainer, Phys. Rep. **101**, 221 (1983).
- <sup>64</sup>A. Schmid and G. Schön, J. Low Temp. Phys. **20**, 207 (1975).
- <sup>65</sup>A. Schmid, in *Nonequilibrium Superconductivity, Phonons and Kapitza Boundaries*, Proceedings of NATO Advanced Study Institute, edited by K. E. Gray (Plenum, New York, 1981), Chap. 14.
- <sup>66</sup>J. Rammer and H. Smith, Rev. Mod. Phys. **58**, 323 (1986).
- <sup>67</sup>A. I. Larkin and Y. N. Ovchinnikov, in *Nonequilibrium Superconductivity*, edited by D. N. Langenberg and A. I. Larkin (Elsevier Science, Amsterdam, 1986), p. 493.
- <sup>68</sup>M. Eschrig, J. A. Sauls, H. Burkhardt, and D. Rainer, in *High- $T_c$  Superconductors and Related Materials, Fundamental Properties, and Some Future Electronic Applications*, Proceedings of the NATO Advanced Study Institute, edited by S.-L. Drechsler and T. Mishonov, pp. 413–446 (Kluwer Academic, Norwell, MA, 2001).
- <sup>69</sup>L. P. Gor'kov, Zh. Eksp. Teor. Fiz. **34**, 735 (1958) [Sov. Phys. JETP **7**, 505 (1958)]; L. P. Gor'kov, Zh. Eksp. Teor. Fiz. **36**, 1918 (1959) [Sov. Phys. JETP **9**, 1364 (1959)].
- <sup>70</sup>L. V. Keldysh, Zh. Eksp. Teor. Fiz. **47**, 1515 (1964) [Sov. Phys. JETP **20**, 1018 (1965)].
- <sup>71</sup>A. L. Shelankov, J. Low Temp. Phys. **60**, 29 (1985).
- <sup>72</sup>A. V. Zaitsev, Zh. Eksp. Teor. Fiz. **86**, 1742 (1984) [Sov. Phys. JETP **59**, 1015 (1984)]; A. L. Shelankov, Sov. Phys. Solid State **26**, 981 (1984) [Fiz. Tverd. Tela (Leningrad) **26**, 1615 (1984)].
- <sup>73</sup>E. Zhao, T. Löfwander, and J. A. Sauls, Phys. Rev. B **70**, 134510 (2004); E. Zhao and J. A. Sauls, Phys. Rev. Lett. **98**, 206601 (2007).
- <sup>74</sup>Yu. S. Barash and I. V. Bobkova, Phys. Rev. B **65**, 144502 (2002); Yu. S. Barash, I. V. Bobkova, and T. Kopp, *ibid.* **66**, 140503(R) (2002).
- <sup>75</sup>M. Eschrig, Phys. Rev. B **61**, 9061 (2000).
- <sup>76</sup>J. C. Cuevas, J. Hammer, J. Kopu, J. K. Viljas, and M. Eschrig, Phys. Rev. B **73**, 184505 (2006).
- <sup>77</sup>Y. Nagato, K. Nagai, and J. Hara, J. Low Temp. Phys. **93**, 33 (1993); S. Higashitani and K. Nagai, J. Phys. Soc. Jpn. **64**, 549 (1995); Y. Nagato, S. Higashitani, K. Yamada, and K. Nagai, J. Low Temp. Phys. **103**, 1 (1996).
- <sup>78</sup>N. Schopohl and K. Maki, Phys. Rev. B **52**, 490 (1995); N. Schopohl, arXiv:cond-mat/9804064 (unpublished).
- <sup>79</sup>M. Eschrig, J. A. Sauls, and D. Rainer, Phys. Rev. B **60**, 10447 (1999).
- <sup>80</sup>A. A. Golubov, M. Yu. Kupriyanov, and E. Ilichev, Rev. Mod. Phys. **76**, 411 (2004).
- <sup>81</sup>Instead of a smoothed potential, one could consider different barrier potential *widths* for the two spin channels. However, this leads to exactly the same effects as we discuss and a smoothed potential barrier (with differing classical return points for the two spin channels, using a WKB language) is a more realistic way of discussing these effects than two box potentials with differing widths.
- <sup>82</sup>H. Jeffreys, Proc. London Math. Soc. **s2-23**, 428 (1925); G. Wentzel, Z. Phys. **38**, 518 (1926); H. A. Kramers, *ibid.* **39**, 828 (1926); L. Brillouin, C. R. Acad. Sci. **183**, 24 (1926).
- <sup>83</sup>G. Metalidis and P. Bruno, Phys. Rev. B **72**, 235304 (2005).
- <sup>84</sup>D. S. Fisher and P. A. Lee, Phys. Rev. B **23**, 6851 (1981).