

UNIVERSITY OF MISSOURI COLLEGE OF AGRICULTURE
AGRICULTURAL EXTENSION SERVICE

CIRCULAR 407

Columbia, Missouri

JUNE, 1939

(Reprinted April, 1949)

LOADING LIVESTOCK

K. B. HUFF



Fig. 1.—Loading From a Permanent Platform. One of the most satisfactory arrangements for the loading of livestock and farm machinery. Platform is 3 feet high. For information on the construction of retaining wall see Circular 398, "Building with Rock".

Every livestock farm should be equipped with some sort of a loading chute to facilitate safe, convenient handling of livestock. A survey made in 1935 by the National Livestock Loss Prevention Board shows there is an average yearly loss of about \$3,000,000 on deads and cripples and \$9,000,000 from bruises in livestock delivery from farms to packing plants in the United States. The producer, of course, bears the loss. The survey traced part of this damage directly to careless loading on the farm. Convenient load-

ing equipment will make it possible to greatly reduce this loss. This circular shows several methods of solving this loading problem, furnishes a list of materials required, and gives the details of construction of two typical loading chutes.

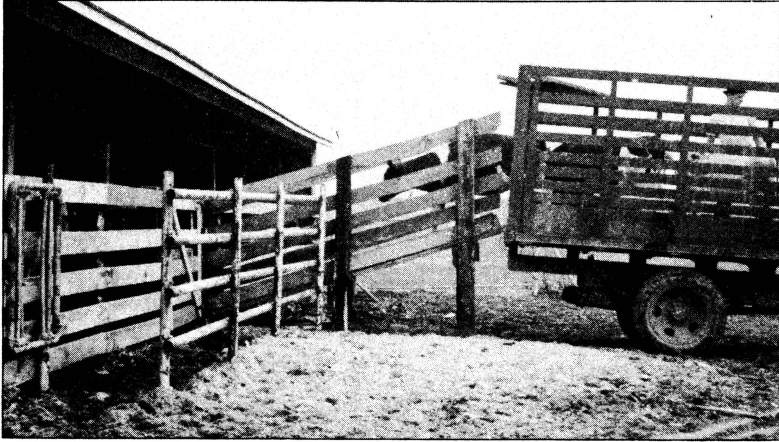


Fig. 2.—A Permanent Loading Chute. Such a chute, built in connection with a small yard or pen, is satisfactory if it is convenient to do all the loading and unloading at one point.

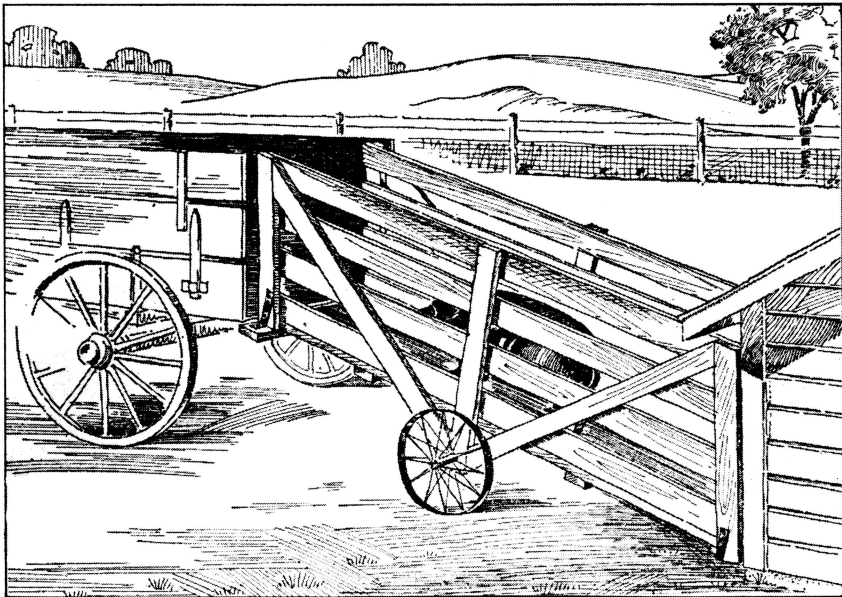
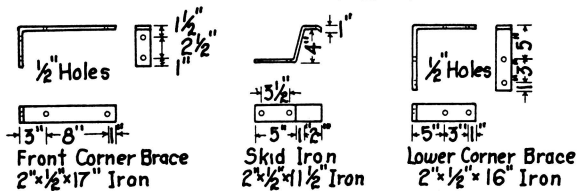
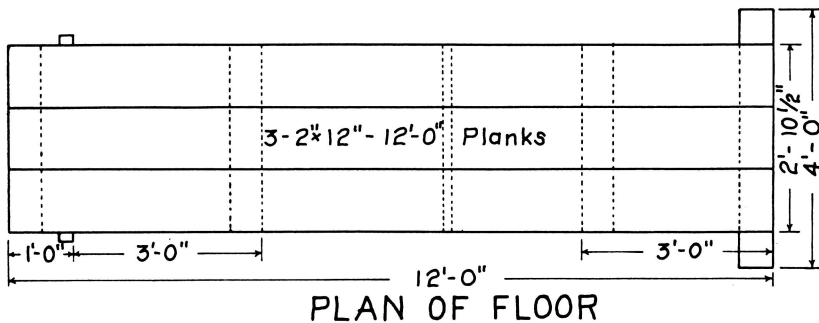
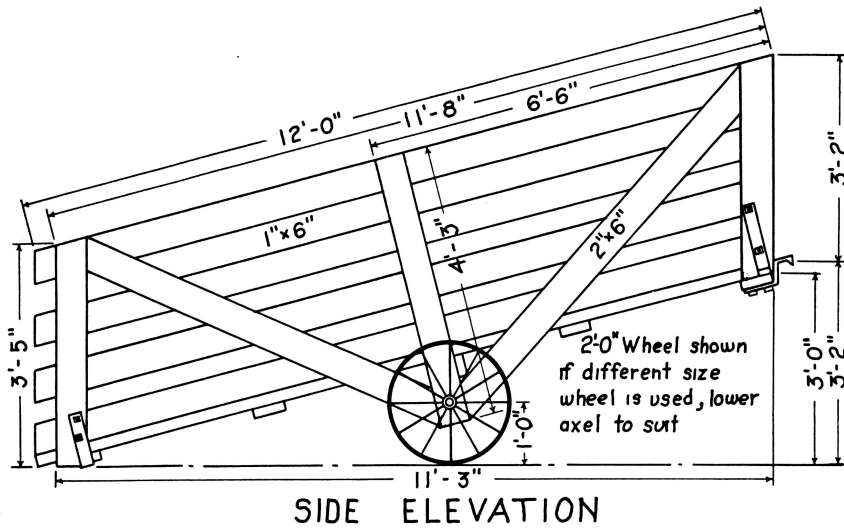


Fig. 3.—Movable Loading Chute. Its rugged construction insures safety and long life. Iron hooks on upper end makes satisfactory contact with wagon or truck bed. Wheels from a discarded farm implement may be used. Fig. 4 shows the materials required and the details of construction. (Courtesy Midwest Plan Service.)



- 8- 1" x 6" - 12' * 1 Rough Fencing for Sides
- 3- 2" x 12" - 12' * 1 Common for Floor
- 3- 2" x 6" - 14' * 1 Common
- 3- 2" x 6" - 10' * 1 Common
- 2 lbs. 16d. Wire Nails
- 3 lbs. 8d. Wire Nails
- 16- 3/8" x 4" Carriage Bolts for Braces
- 4- 3/8" x 5" Carriage Bolts for Skid Irons
- 1- 2" x 1/2" x 7'-6" Iron for Forgings
- 4ft. 1" Pipe for Axle
- 4- 1/4" x 2 1/2" Cotter Keys
- 4- 1/4" Washers
- 2- 24" or Other Convenient Size Wheels

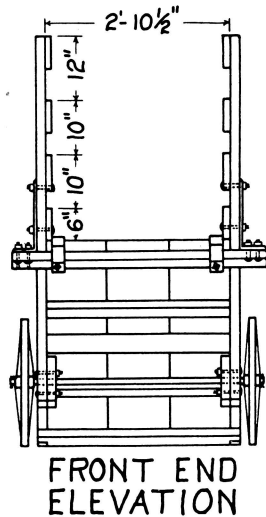
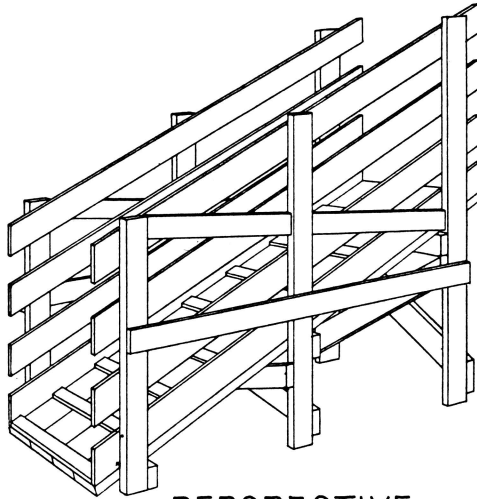
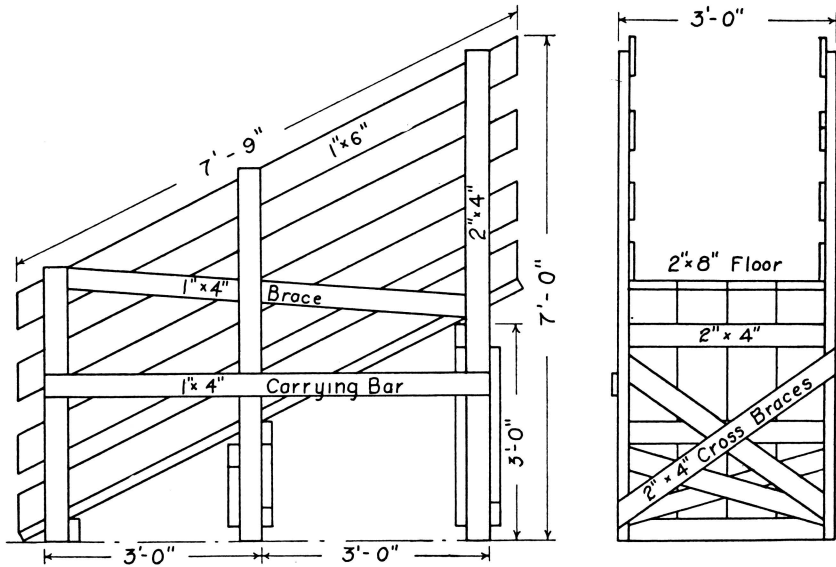


Fig. 4.—Construction Details of a Convenient Movable Loading Chute.



PERSPECTIVE



SIDE VIEW
BILL OF MATERIALS

END VIEW

- 5-2"x4"-12' Studs, braces and floor supports
- 4-2"x8"-8' Floor
- 2-1"x4"-12' Braces and carrying bars
- 8-1"x6"-8' Sides
- 2-1"x2"-12' Floor cleats
- 1 lb. 16d spikes
- 1 lb. 8d common nails

Fig. 5.—Construction Details of a Simple Loading Chute.

UNIVERSITY OF MISSOURI COLLEGE OF AGRICULTURE AND THE UNITED STATES
DEPARTMENT OF AGRICULTURE COOPERATING

J. W. BURCH, Director, Agricultural Extension Service

Distributed in furtherance of the Acts of Congress of May 8, and June 30, 1914

Digitization Information Page

Local identifier C407-1939

Source information

Format Book
Content type Text /Text with images
Source ID Gift copy not added to collection
Notes

Capture information

Date captured November 2019
Scanner manufacturer Fujitsu
Scanner model fi-7460
Scanning system software ScandAll Pro v. 2.1.5 Premium
Optical resolution 600 dpi
Color settings 8 bit grayscale
File types tiff

Derivatives - Access copy

Compression Tiff: LZW compression
Editing software Adobe Photoshop CC
Resolution 600 dpi
Color grayscale
File types pdf created from tiffs
Notes Images cropped, straightened, and brightened
Canvas size: 6 x 9