



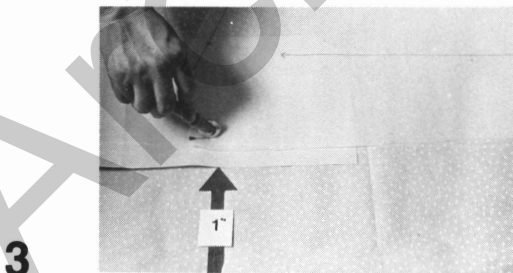
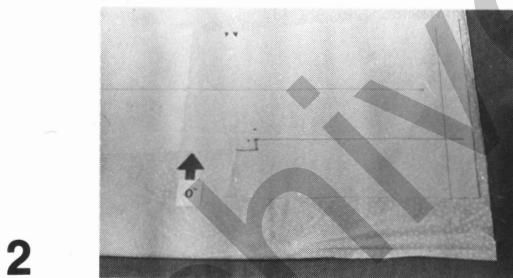
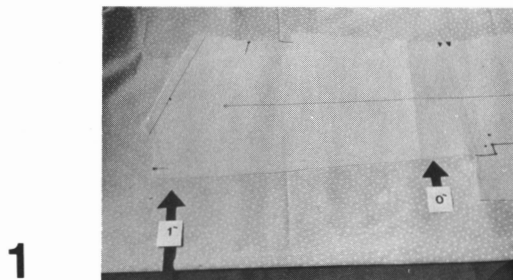
Published by the University of Missouri-Columbia
Extension Division
College of Home Economics

JUL 20 1982

Cutting and Attaching the Lining

Velda Rankin, State Clothing & Textiles Specialist
Janet Delcour, Area Clothing & Textiles Specialist
Doris Koelling, Consultant

Many men's jackets have a full lining in front and a half lining in back. Women's jackets are usually unlined or completely lined. It is not difficult to cut a full lining if one is not included in the pattern. The following steps are suggested.



- Measure the difference in length between the front lining and the jacket front. Make the back lining shorter by the same amount.

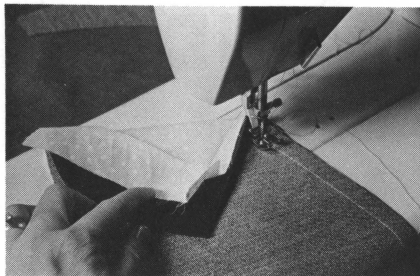
- Place the jacket back pattern on the folded lining fabric one inch from the cutting line at the center back neckline seam. This allowance provides for a pleat.

- Trace the vent fold line and cut other pattern pieces according to directions. Taper the pleat to nothing just above the vent.

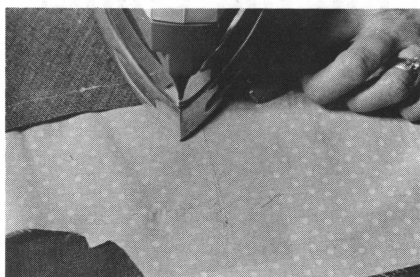
- Include all of the vent when cutting the lining.

Mark the center back at the neckline. This indicates the amount of fabric to be pleated.

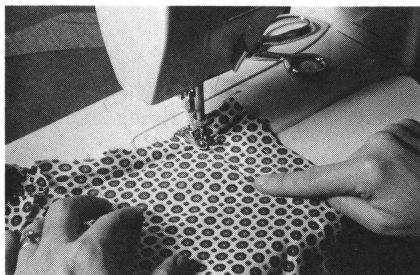
4



5



6



7



Assembling the Lining

- Place the lining side next to the feed dog and sew the front facing to the front lining.
- Turn $\frac{1}{2}$ inch of the lining to the wrong side at the hem.
- Pin to the facing $\frac{1}{2}$ inch above the seam line at the bottom edge of the facing.
- Stitch with the lining next to the feed dog.
- Fuse interfacing on the wrong side of the pocket area.
- Follow pattern directions for making the inside pocket on a man's jacket.

Form the back pleat by beginning at the center back neckline and stitching down one inch on the normal seam line.

Stitch the remaining seams, remembering to end the shoulder seam $\frac{3}{8}$ inch from the neckline edge.

This guide is part of a series on clothing construction.
For others in the series see Home Economics guides 410-422.